

Contract No. : EP/SP/52/06
Development of EcoPark in Tuen Mun Area 38

ENVIRONMENTAL MONITORING AND AUDIT

MONTHLY EM&A REPORT for

June 2009

Environmental Pioneers & Solutions Limited

8/F, Chaiwan Industrial Centre Building
20 Lee Chung Street, Chaiwan, Hong Kong
Tel: 2889 0569 Fax: 2856 2010

APPROVAL SHEET

DOCUMENT DATE: 30 June 2009

Prepared and Certified by: ET Leader (Environmental Pioneers & Solutions Limited)

Signature: _____
Miss Patricia Chung

Date: _____

Verified by: _____
IEC*

Date: _____

* IEC – Independent Environmental Checker

TABLE OF CONTENTS

EXECUTIVE SUMMARY	4
1. BASIC PROJECT INFORMATION	6
2. SUMMARY OF WORK ACTIVITIES AND CONSTRUCTION STATUS.....	8
3. STATUS OF ENVIRONMENTAL PROTECTION AND SITE INSPECTIONS..	10
4. SUMMARY OF ENVIRONMENTAL PERMIT AND LICENCES	17
5. CUMULATIVE LOG OF COMPLAINTS AND REMEDIAL ACTION	17
6. CUMULATIVE LOG OF NOTIFICATION OF SUMMONS AND PROSECUTIONS	17
7. CONCLUSION	17
APPENDIX 1 - SITE LAYOUT PLAN.....	19
APPENDIX 2 - THE CONTACT PERSONS, TELEPHONE NUMBERS OF KEY PERSONNEL FOR DEVELOPMENT OF ECOPARK IN TUEN MUN AREA 38	20
APPENDIX 3 – REVISED SITE LAYOUT PLAN FOR REFUSE COLLECTION POINTS.....	21
APPENDIX 4 - ORIGINAL LANDFILL GAS FIELD MEASUREMENT RECORDING SHEETS.....	22
APPENDIX 5 – CUMULATIVE LOG OF COMPLAINTS	26

EXECUTIVE SUMMARY

This is the thirty-sixth monthly Environmental Monitoring and Audit (EM&A) Report for the Environmental Protection Department Contract No. EP/SP/52/06 entitled “Development of EcoPark in Tuen Mun Area 38”. (Environmental Permit No. EP-226/2005/A).

This report contains the results and findings of site inspection activities and EM&A works carried out by the Environmental Team (ET) of the Works Contractor as required in the contract during June 2009.

The site activities in the reporting period mainly consisted of excavation and site formation works and construction of drainage in Phase II construction site.

Several environmental issues, such as accumulated water in excavation pits after rain and temporary removal of hoardings, have been identified by ET during weekly site inspections in the reporting month. Contractor has implemented some mitigation measures to address those problems as advised by ET. Some of the measures taken by the contractor were considered as effective to minimize negative impact to the environment. On-going investigation will be carried out to observe performance and effectiveness of those measures. Outstanding environmental items will be inspected in the following month.

LFG monitoring on points FMH 33, 33-34, 35 and 37 are terminated since 12 June 2009, due to completion of excavation works, however points S3 and Site exit are still being monitored. The measurement results from ET shown in Table 3.5 were within Action and Limit Levels in accordance with EM&A manual.

There were no notifications of summons or successful prosecution during June 2009.

Regarding to the water discharge to storm drainage incident recorded in March 2009, ET continued to monitor the mitigation actions carried out by the contractor. There was no water discharge observed in the construction site during the reporting month. As informed by contractor, no further action has been taken by EPD in regard to the above

incident.

Planned activities for July 2009 with regard to development of EcoPark consist of:

- 1) Site formation works,
- 2) Excavation works,
- 3) Road formation works and
- 4) Construction of drainage, sewerage & water mains

1. BASIC PROJECT INFORMATION

1.1 Introduction

This is the thirty-sixth monthly Environmental Monitoring and Audit (EM&A) Report for the Environmental Protection Department Contract No. EP/SP/52/06 entitled “Development of EcoPark in Tuen Mun Area 38”. The site layout plan is shown in Appendix 1. The report was prepared by the Environmental Team, Environmental Pioneers & Solutions Limited, of the Works Contractor, Kaden Construction Limited. The report is to be submitted to the Works Contractor, the Engineer and the Environmental Protection Department for the project.

This report presents the results of the environmental monitoring of the project activities conducted during the month of June 2009. This included regular site inspections once per week for verification of implementation of the mitigation measures as recommended in the EM&A Manual and the Contractor’s Environmental Management Plan (EMP).

The construction works of Phase I have already commenced in July 2006 and have been completed in November 2008.

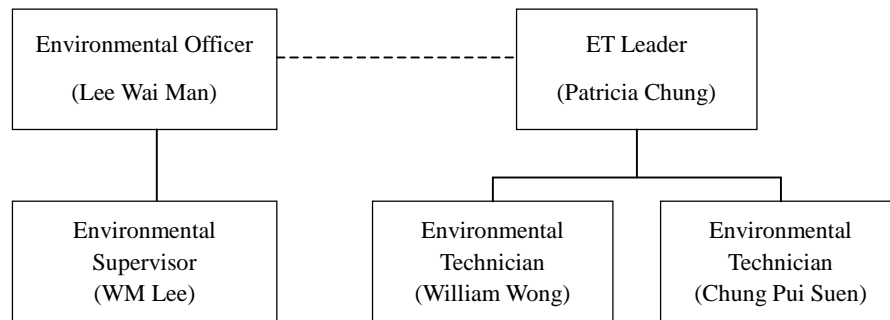
The construction works of Phase II commenced in December 2008 and is anticipated to be completed in December 2009.

The contact person and telephone number of key personnel for the captioned project are shown in Appendix 2.

1.2 Project Organization and Management

The Works Contractor has commissioned Environmental Pioneers & Solutions Limited as the Environmental Team, which comprises the environmental team leader and the environmental technicians to undertake the environmental monitoring and audit work for this project. The project Organization Chart of Environmental Team is shown in Figure 1.1.

Figure 1.1 Organization Chart of Environmental Team



2. SUMMARY OF WORK ACTIVITIES AND CONSTRUCTION STATUS

2.1 Works Undertaken during the Month

A summary of the site installation works in this month, with the information of locations, activities, equipment/materials and dates of occurrence, is provided by the Contractor, as shown in Table 2.1.

Table 2.1 Work Activities for June 2009		
Item	Work Activities & Location	Date of Occurrence
1	Site formation works	01 June 2009 – 30 June 2009
2	Excavation works	01 June 2009 – 30 June 2009
3	Road Formation works	01 June 2009 – 30 June 2009
4	Construction of drainage	01 June 2009 – 30 June 2009

Machineries		
	Equipment/ Plant	Quantity
1	Mobile Crane	0
2	Excavator	6
3	Generator	2
4	Air Compressor	1
5	Roller	0
6	Loader	1
7	Grab Lorry	0
8	Crane Lorry	1
9	Water Truck	1
10	Dump Truck	1

Remarks:

- As informed by the Contractor, most equipment is mobile at site subject to work progress.
- Refer to Appendix 1 – Site layout plan for location of construction activities.

2.2 Future Key Issues

The Contractor has provided an updated construction program in Table 2.2 to show the planned activities for the coming month (July 2009). The anticipated environmental issues are summarized as follow:

Table 2.2 Construction Program and Anticipated Environmental Issues		
Item	Works	Anticipated Environmental Issues
1	Site formation works, excavation works & road works	<ul style="list-style-type: none"> - Generation of C&D waste; excavated material should be reused as much as practicable. - Dust may be generated; the wheel washing machine should be in operation. - Haul road should be sprayed regularly, by truck or sprinkler. - Stagnant water should be removed. - Mosquito mitigation measures should be implemented. - Landfill gas monitoring should be carried out.
2	Construction of drainage, sewerage & water mains	<ul style="list-style-type: none"> - Generation of C&D waste; excavated material should be used as much as practicable - Dust may be generated; the wheel washing machine should be in operation

The site inspection schedule for the next month (July 2009) is designated on 03, 10, 17, 24 and 31 of July 2009.

3. STATUS OF ENVIRONMENTAL PROTECTION AND SITE INSPECTIONS

3.1 Environmental Site Inspections

Environmental site inspections are required to inspect the construction activities of the Development of EcoPark in order to ensure that appropriate environmental protection and pollution control mitigation measures are properly implemented. Regular site inspections should be carried out by the ET once per week during construction phase.

Outstanding issues at the end of May 2009 includes:

- 1) Well-constructed wheel washing bay was not available for wheel washing machine at the exit of Phase II construction site. Manual wheel-washing facilities were provided at the temporary site exit. Contractor was reminded that proper wheel washing machine with a washing bay should be provided at the new exit of Phase II construction site. Implementation status will be inspected when construction of the new exit begins tentatively in August.
- 2) Water and oily matters have been found accumulated at the trays of chemical storage cabinet on inspections carried out in May 2009. Contractor took action to clear the accumulated water and oily matter prior to inspection carried out on 19 June 2009.

Outstanding issues will be inspected in the next reporting month.

Site inspection for Phase I construction site was conducted on 12 June 2009. Special observations include:

- 1) Drip pan has not yet been provided for the three plastic chemical drums adjacent to the cooling tower in the administration building. ET was informed that a proper drip pan has been designed and will be constructed. Contractor was required to provide a tentative completion date for drip pan construction.

Site inspections for Phase II construction site were conducted on 05, 12, 19 and 26 of June 2009.

A detailed checklist of each site inspection together with comments, relevant photos and maps have been filed and kept.

The findings and results of site inspections are provided in Table 3.1:

Table 3.1 Summary of Site Inspections for Phase II construction site during June 2009				
Date	Observations	Advice from ET	Action taken	Closing Date
May 09	Well-constructed wheel washing bay was not available for wheel washing machine at the entrance of Phase II construction site.	Contractor was reminded that proper wheel washing machine and bay should be provided at the new exit of Phase II construction site as soon as possible.	Manual wheel-washing facilities were provided at the temporary site exit.	Implementation states will be inspected when construction of the new exit begins tentatively in August.
05 June 09	Accumulated muddy water has been observed at the excavation pits near the waterfront after heavy rain.	Contractor was reminded that accumulated water should be treated properly to meet requirements specified in the issued discharge license, if needed	Contractor took action to seal off openings of Phase I construction site drainage system to excavation pits with concrete block.	12 June 2009
05 June 09	Accumulated water has been observed in drip tray in Chemical Storage Area after rainy days.	Contractor was reminded to clear stagnant water regularly.	Contractor took action to remove rainwater accumulated in the chemical storage cabin.	19 June 2009
05 June 09	Housekeeping at the excavation pit near the waterfront needs improvement	Contractor was advised to keep good site practice on site.	Contractor took action to relocate refuse in designated collection point	12 June 2009
12 June 09 19 June 09 26 June 09	Dusty stockpiles without sufficient effective dust suppression measures were observed	Contractor was advised to provide dust suppression measures including cover stockpiles with tarpaulin.	Contractor took action to cover some stockpiles with tarpaulin. Other measures such as water spraying have been observed during weekly site inspection.	To be followed in the next reporting month
19 June 09 26 June 09	Hoardings in some sections along Lung Mun Road and Road A of Phase I construction site have been temporarily removed due to the construction program.	Contractor was reminded to re-install hoardings immediately when construction program in the sections is finished.	Contractor took immediate action to place fabric wraps as temporarily measure for dust suppression before reinstallation of hoardings.	26 June 2009
26 June 09	Chemical drums without drip trays have been observed outside chemical storage cabin.	Contractor was reminded to properly handle all chemical drums on site	- -	To be followed in the next reporting month

3.2 Air Dust

Excavation work is being carried out in Phase II construction site. Dust problem may be arisen when stockpiles of excavated materials are not enclosed, covered or dampened during dry or windy conditions. Dust suppression measures such as water spraying and coverings with tarpaulin on stockpiles have been observed in the reporting month.

Hoarding in some sections along Lung Mun Road and Road A of Phase I construction site have been temporarily removed due to the construction program since 19 June 2009. Contractor took immediate action to place fabric wraps, prior to inspection on 26 June 2009, as temporarily measure for dust suppression before reinstallation of hoardings. Contractor was reminded to re-install hoardings immediately when construction program in the sections is finished.

3.3 Noise

The major noise source was vehicle movement and machinery in the EcoPark. Since the nearby NSRs were remote, the noise impact was minimal. There was no specific observation noted regarding noise issue. The Contractor has obtained the Construction Noise Permit on 07 August 2007 but it had been expired on 28 Feb 2008. The contractor should renew the permit as necessary.

3.4 Surface Water Quality

Since there was no water discharge at manhole, the Contractor removed the silt curtain installed at discharge point on 4 April 2007, as agreed by the Engineer's Representative. No muddy water was observed at discharge point for Phase I construction site. As informed by Engineer's Representative, there was no direct water discharge at manhole in Phase II construction site. No muddy water discharge is expected.

Chemical toilets (1 nos.) have been provided in Phase II construction site by a licensed contractor, of which sewage generated is collected every three to five days without causing contamination on surface water. The Effluent Discharge License was issued to

the Contractor on 20 November 2006.

The temporary storage tank was used to store the effluent of aerobic wastewater treatment system and the stored effluent was pumped away regularly. As checked by the ET, there was no effluent discharge into the storm water drain. To avoid any sewage overflow, frequent checking is required after the commencement of Phase II construction works.

Regarding to the water discharge to storm drainage incident recorded in March 2009, ET continued to monitor the mitigation actions carried out by the contractor. There was no water discharge observed in the construction site during the reporting month. As informed by contractor, no further action has been taken by EPD in regard to the above incident.

3.5 Visual and Landscape Impact

Hoarding was erected at the site egress and aligned along the site boundary along Lung Mun Road. Hoardings were specially designed to be movable for future re-use in other locations. Some of the hoardings have been removed at the interface between Phase I and Phase II construction site. Re-installation has been completed as observed during inspection carried out on 24 April 2009.

3.6 Waste / Chemical Waste

The Contractor implemented visual inspection and distributed flyers/ notices to ensure all dump trucks have mechanical covers closed when leaving EcoPark site.

Separate waste collection bins were made available for collecting aluminum cans, waste paper and plastic bottles etc. The Contractor has provided the revised site layout plan for refuse collection points as shown in Appendix 3.

Waste dumpers were used for the collection and storage of general waste. Temporary storage areas for waste metals and waste tyres were established in Phase I construction site. For Phase II construction site, a designated refuse collection point has been established and location is shown in Appendix 3.

Excavated materials are reused as back-fill material to balance cut and fill and hence reduce the generation of materials. Surplus materials are returned to stock in centralized area with suitable protective measures. The Contractor was reminded to comply with the requirements and conditions for disposal at public fill facility and all oversized aggregates should be crushed to less than 250mm before delivering to the public fill.

Materials are recycled and re-used at site as much as practicable to minimize waste generation. Timbers are recycled to make temporary tools and access ladders etc. Excavated rocks, concrete and asphalts are stored for future re-use in land formation and structural construction etc.

Registered waste collectors will be arranged to collect and transport the wastes whenever necessary.

The Contractor has provided sufficient drip trays for all temporary electricity generators at site. These drip trays should be covered by tarpaulin sheet to minimize rainfall accumulation.

Table 3.4 provides a summary table of waste disposal in June 2009. The Contractor has been reminded to keep good record at site in order to have a clear presentation of waste disposal.

Table 3.4 Summary of Waste Disposal in June 2009			
Type of Waste	Disposal Site	Quantity	Remarks
General Waste	WENT Landfill	11 tonnes	-
Inert C&D Material	Public Fill Facility	0 tonnes	-

3.7 Landfill Gas

As informed by the Engineer's Representative, monitoring points FMH 33, 33-34, 35 and 37 are closed due to completion of excavation works, since 12 June 2009. However, points S3 and Site exit are still being monitored.

Measurement results are summarized in Table 3.5. All results are within the Action / Limit Levels in accordance with the EM&A Manual, as shown in Table 3.6.

Table 3.5 Summary of LFG Measurement for June 2009

Sampling Location	Date of Measurement	Sampling Time	Weather Condition	Methane (CH ₄) %LEL	Carbon Dioxide (CO ₂) %LEL	Oxygen (O ₂)
S3	05 June 09	10:47	Sunny	0.00%	0.00%	19.8
FMH 37	05 June 09	10:28	Sunny	0.00%	0.00%	20.5
FMH 35	05 June 09	10:37	Sunny	0.00%	0.00%	19.9
FMH 33 – 34	05 June 09	11:53	Sunny	0.00%	0.00%	20.3
FMH 33	05 June 09	11:50	Sunny	0.00%	0.00%	20.5
Site exit	05 June 09	10:24	Sunny	0.00%	0.00%	20.9
S3	12 June 09	11:56	Rainy	0.00%	0.00%	20.8
FMH 37	12 June 09	/	Rainy	N/A*	N/A*	N/A*
FMH 35	12 June 09	/	Rainy	N/A*	N/A*	N/A*
FMH 33 – 34	12 June 09	/	Rainy	N/A*	N/A*	N/A*
FMH 33	12 June 09	/	Rainy	N/A*	N/A*	N/A*
Site exit	12 June 09	11:52	Rainy	0.00%	0.00%	20.8
S3	19 June 09	10:42	Sunny	0.00%	0.00%	20.9
FMH 37	19 June 09	/	Sunny	N/A*	N/A*	N/A*
FMH 35	19 June 09	/	Sunny	N/A*	N/A*	N/A*
FMH 33 – 34	19 June 09	/	Sunny	N/A*	N/A*	N/A*
FMH 33	19 June 09	/	Sunny	N/A*	N/A*	N/A*
Site exit	19 June 09	10:30	Sunny	0.00%	0.00%	20.9
S3	26 June 09	11:41	Rain	0.00%	0.00%	20.3
FMH 37	26 June 09	/	Rain	N/A*	N/A*	N/A*
FMH 35	26 June 09	/	Rain	N/A*	N/A*	N/A*
FMH 33 – 34	26 June 09	/	Rain	N/A*	N/A*	N/A*
FMH 33	26 June 09	/	Rain	N/A*	N/A*	N/A*
Site exit	26 June 09	11:35	Rain	0.00%	0.00%	20.8
Remarks:						
1) LFG monitoring stopped as excavation works are completed since 12 June 2009.						

Table 3.6 Action Levels, Limit Levels and Event and Action Plan for LFG (From EM&A Manual)

Parameter	Level	Action
Oxygen	Action Level < 19% O ₂	Ventilate trench/ void to restore O ₂ to >19%
	Limit Level < 18% O ₂	Stop works Evacuate personnel/prohibit entry Increase ventilation to restore O ₂ to > 19%
Methane (CH ₄)	Action Level >10% LEL	Post “No Smoking” signs Prohibit hot works Increase ventilation to restore CH ₄ to <10% LEL
	Limit Level >20% LEL	Stop works Evacuate personnel/prohibit entry Increase ventilation to restore CH ₄ to <10% LEL
Carbon Dioxide (CO ₂)	Action Level >0.5% CO ₂	Ventilate to restore CO ₂ to < 0.5%
	Limit Level >1.5% CO ₂	Stop works Evacuate personnel/prohibit entry Increase ventilation to restore CO ₂ to < 0.5%

4. SUMMARY OF ENVIRONMENTAL PERMIT AND LICENCES

ET has checked with the Contractor for the status of all environmental permits and licenses for this project as at June 2009, which is summarized in Table 4.1. ET will follow the application process of the outstanding permits / licenses and will provide suitable assistance whenever appropriate.

Table 4.1 Summary of Environmental Permits/ Licences				
Description	License / Permit No.#	Date of Issue	Date of Expiry	Status/Remarks
Environmental Permit	EP-226/2005/A	9-Sept-2005	--	Issued
Registration of Waste Producer	5111-421-K2869-02	27-Jul-2006	--	Issued
Construction Noise Permit	GW-RW0402-07	07-Aug-2007	28-Feb-2008	Expired
Effluent Discharge Licence	EP760/421/011762/I	20-Nov-2006	01-Dec-2011	Issued

5. CUMULATIVE LOG OF COMPLAINTS AND REMEDIAL ACTION

The cumulative log of complaints is referred in Appendix 5.

6. CUMULATIVE LOG OF NOTIFICATION OF SUMMONS AND PROSECUTIONS

No notification of summons and no prosecutions occurred during June 2009.

7. CONCLUSION

There is no summon nor prosecutions reported during June 2009.

Regarding to the water discharge to storm drainage incident recorded in March 2009, ET continued to monitor the mitigation actions carried out by the contractor. There was no water discharge observed in the construction site during the reporting month. As informed by contractor, no further action has been taken by EPD in regard to the above incident.

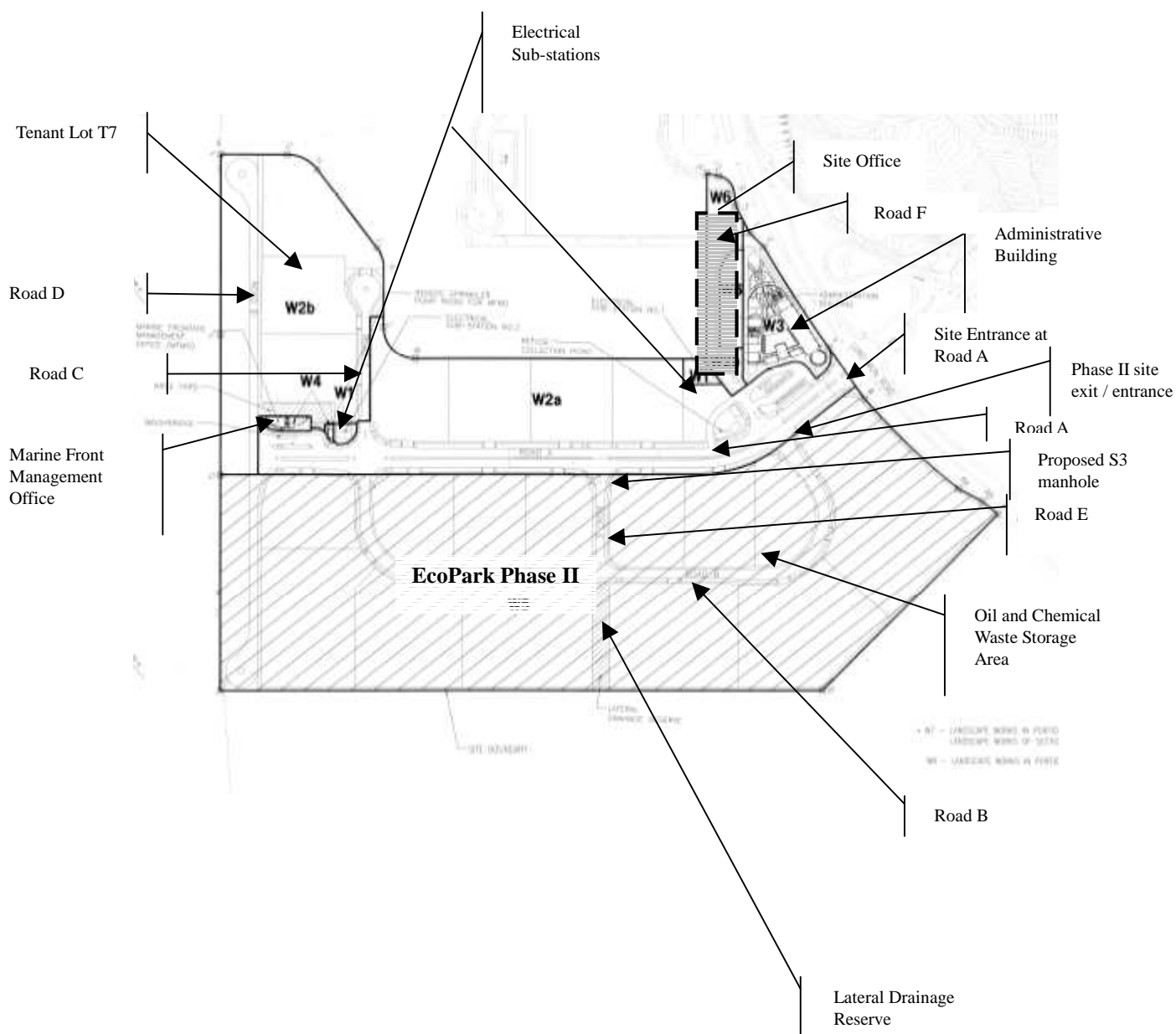
Several environmental issues, such as accumulated water in excavation pits after rain and temporary removal of hoardings, have been identified by ET during weekly site inspections in the reporting month. Contractor has implemented some mitigation measures to address those problems as advised by ET. Some of the measures taken by the contractor were considered as effective to minimize negative impact to the environment. On-going investigation will be carried out to observe performance and effectiveness of those measures. Outstanding environmental items will be inspected in the following month.

The Contractor has been using the waste management and record system including allocation of waste storage areas and the trip ticket system as proposed in the Environmental Management Plan.

LFG monitoring on points FMH 33, 33-34, 35 and 37 are terminated since 12 June 2009, due to completion of excavation works, however points S3 and Site exit are still being monitored. The measurement results from ET shown in Table 3.5 were within Action and Limit Levels in accordance with EM&A manual.

The ET will continue to implement the environmental monitoring & audit programme in accordance with the EM&A Manual and Environmental Permit requirement.

APPENDIX 1 - SITE LAYOUT PLAN



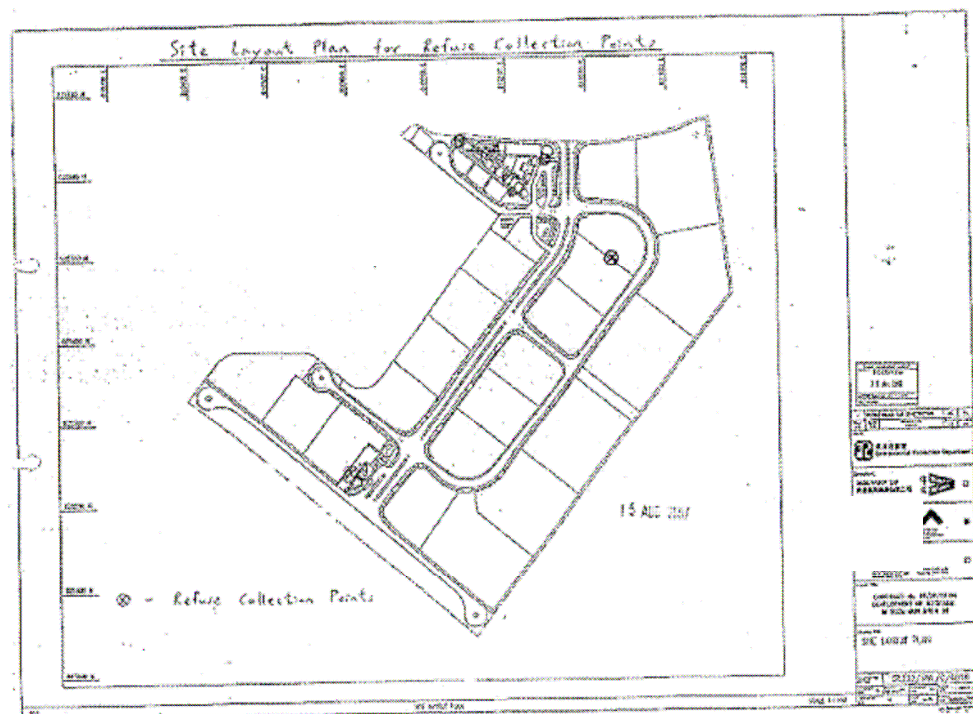
APPENDIX 2 - THE CONTACT PERSONS, TELEPHONE NUMBERS OF KEY PERSONNEL FOR DEVELOPMENT OF ECOPARK IN TUEN MUN AREA 38

Company/Department	Name	Position	Telephone
Scott Wilson Ltd.	Harold Insley	Independent Environmental Checker	2410 3858
Scott Wilson Ltd.	Mr. Andy Cheung	Resident Engineer	6111 9703
Scott Wilson Ltd.	Mr. T W Wong	Inspector	6111 9705
Kaden Construction Limited	Mr. K M Book	Project Manager	9193 8680
Kaden Construction Limited	Mr. Stephen Leung	Section Agent	9071 7657
Environmental Pioneers & Solutions Limited	Miss. Patricia Chung	Environmental Team Leader	2185 0123
Environmental Pioneers & Solutions Limited	Mr. William Wong	Environmental Technician	2185 0154
Environmental Pioneers & Solutions Limited	Mr. Stephen Tsang	Environmental Technician	2185 0172

APPENDIX 3 – REVISED SITE LAYOUT PLAN FOR REFUSE COLLECTION POINTS

Contract No. EP/SP/52/06
EM&A Report No. 30 (December 2008)

APPENDIX 3 – REVISED SITE LAYOUT PLAN FOR REFUSE COLLECTION POINTS



**APPENDIX 4 - ORIGINAL LANDFILL GAS FIELD MEASUREMENT
RECORDING SHEETS**

Environmental Pioneers and Solutions Limited

Contract No.: EP/SP/52/06 - Development of EcoPark in Tuen Mun Area 38

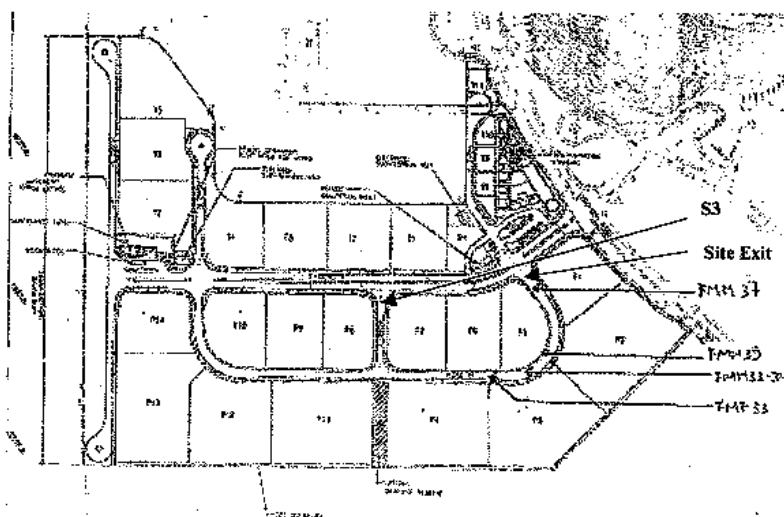
Landfill Gas Monitoring – Field Measurement Recording Sheet

Date of Monitoring: 5 June 2009
 Weather condition: SUNNY
 Monitoring performed by: Chung Hui Suen
 Monitoring instrument:

Instruments	Model: GEM 2000	Last calibration:	03 April 2009
	S/N: GM-08793106	Next calibration:	02 April 2010

Monitoring results:

Location	Time	Results				
		Methane (CH ₄) %	Carbon Dioxide (CO ₂) %	Oxygen (O ₂) %	Bal. Gas %	Baro. Pressure %
S3	1047	00.0	00.0	19.8	80.2	29.59
FMH 33	1150	00.0	00.0	20.5	79.4	29.55
FMH 33 – 34	1153	00.0	00.0	20.3	79.6	29.55
FMH 35	1037	00.0	00.0	19.9	79.9	29.59
FMH 37	1028	00.0	00.0	20.5	79.4	29.59
Site exit	1024	00.0	00.0	20.9	79.0	29.59



Environmental Pioneers and Solutions Limited

Contract No.: EP/SP/52/06 - Development of EcoPark in Tuen Mun Area 38

Landfill Gas Monitoring – Field Measurement Recording Sheet

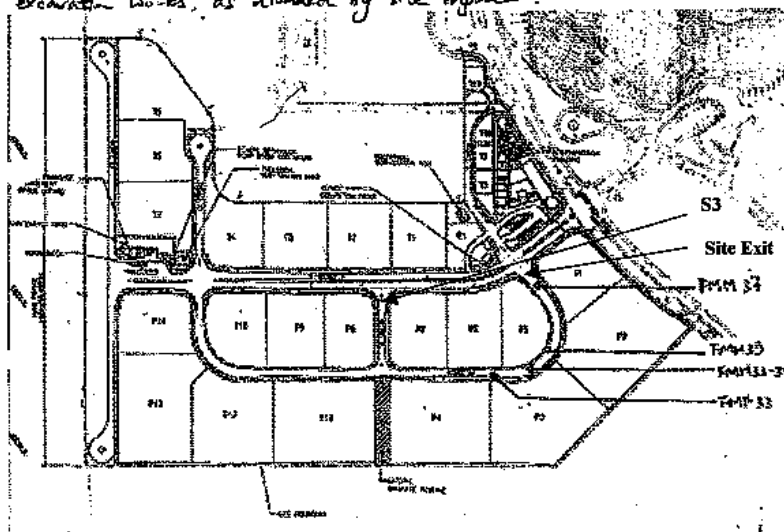
Date of Monitoring: 12/6/2009
 Weather condition: Rainy
 Monitoring performed by: Chung Pui Suen
 Monitoring instrument:

Instruments	Model: GEM 2000	Last calibration:	03 April 2009
	S/N: GM-08793106	Next calibration:	02 April 2010

Monitoring results:

Location	Time	Results				
		Methane (CH ₄) %	Carbon Dioxide (CO ₂) %	Oxygen (O ₂) %	Bal. Gas %	Baro. Pressure %
S3	1158	00.0	00.0	20.8	79.2	29.67
FMH 33 *						
FMH 33-34 *						
FMH 35 *						
FMH 37 *						
Site exit	1152	00.0	00.0	20.8	79.1	29.67

Monitoring locations FMH 33, 33-34, 35 & 37 was closed due to completion of excavation works, as informed by site engineer.



Environmental Pioneers and Solutions Limited

Contract No.: EP/SP/52/06 - Development of EcoPark in Tuen Mun Area 38

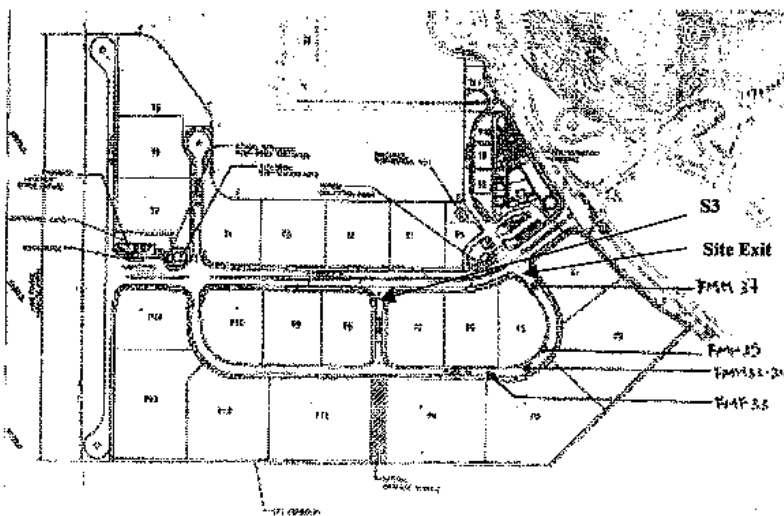
Landfill Gas Monitoring – Field Measurement Recording SheetDate of Monitoring: 19 Jun 2009Weather condition: SunnyMonitoring performed by: Wai Man Wang

Monitoring instrument:

Instruments	Model: GEM 2000	Last calibration:	03 April 2009
	S/N: GM-08793106	Next calibration:	02 April 2010

Monitoring results:

Location	Time	Results				
		Methane (CH ₄) %	Carbon Dioxide (CO ₂) %	Oxygen (O ₂) %	Bal. Gas %	Baro. Pressure %
S3	10:42	0.02	0.00	20.9	79.2	29.59
Site exit	10:30	0.00	0.00	20.9	79.2	29.59



Environmental Pioneers and Solutions Limited

Contract No.: EP/SP/52/06 - Development of EcoPark in Tuen Mun Area 38

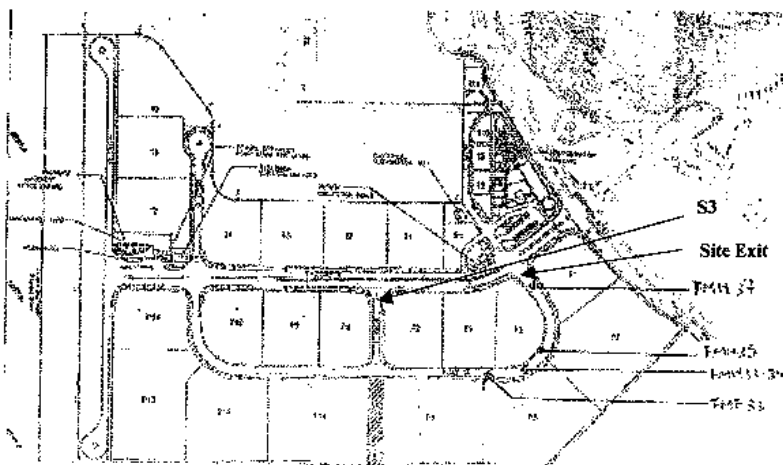
Landfill Gas Monitoring – Field Measurement Recording SheetDate of Monitoring: 26/6/2009Weather condition: SunnyMonitoring performed by: Chung Pui Suen

Monitoring instrument:

Instruments	Model: GEM 2000	Last calibration:	03 April 2009
	S/N: GM-08793106	Next calibration:	02 April 2010

Monitoring results:

Location	Time	Results				
		Methane (CH ₄) %	Carbon Dioxide (CO ₂) %	Oxygen (O ₂) %	Bal. Gas %	Baro. Pressure %
S3	1141	00.0	00.0	20.3	79.6	29.60
Site exit	1135	00.0	00.0	20.8	79.2	29.60



APPENDIX 5 – CUMULATIVE LOG OF COMPLAINTS**CUMULATIVE LOG OF COMPLAINTS**

Environmental Parameters	No. of Outstanding Complaints	No. of complaints received in June 2009	Cumulative no. of complaints received since the commencement of project
Air	0	0	2
Noise	0	0	0
Water	0	0	0
Waste	0	0	0
Total	0	0	2

DETAILS OF COMPLAINTS AND REMEDIAL ACTIONS

Log Ref.	Date of Complaint received	Location	Complainant /Date	Details of Complaint	Investigation /Mitigation Action	Investigated by/ Date
-	-	-	-	-	-	-