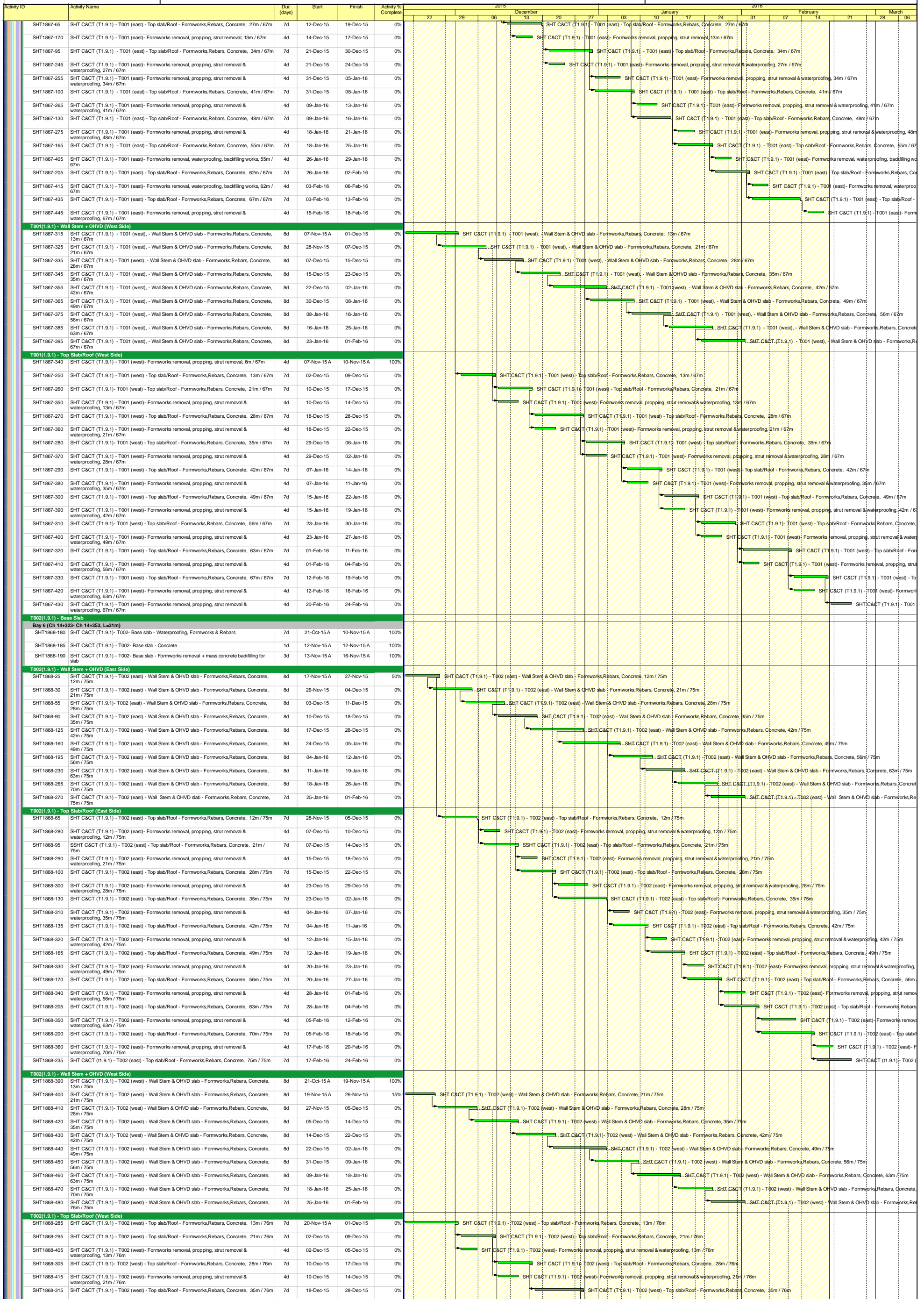


■ Works Programme
■ Works Programme
◆ Works Programme
◆ Milestone
■ Works Programme

China State Construction Engineering (Hong Kong) Ltd -
Contract No. HY/2011/03 - HZMB, Hong Kong Link Road
, Section between Scenic Hill and HKBCF

Prepared by MM			
Date	Revision	Chec...	Approved
05-Dec-15		WC	SYT

Contract No. HY/2011/03 - HZMB, Hong Kong Link Road
 Section between Scenic Hill and HKBCF



Activity ID	Activity Name	Dur. (days)	Start	Finish	Activity % Complete	2015												2016											
						22	29	06	13	20	27	03	10	17	24	31	07	14	21	28	06								
RAMP A (Existing Land Area)																													
Bay A6																													
MAS1450	Maint. Access Subway Ramp A, Bay A6 - Excavation works, blinding layer	14d	16-Oct-15 A	21-Nov-15	90%	[Gantt bar: 16-Oct-15 to 21-Nov-15]																							
MAS1455	Maint. Access Subway Ramp A, Bay A6 - Base Slab (formworks, rebar fixing, concreting)	9d	23-Nov-15	02-Dec-15	0%	[Gantt bar: 23-Nov-15 to 02-Dec-15]																							
MAS1460	Maint. Access Subway Ramp A, Bay A6 - RC Wall (formworks, rebar fixing, concreting)	14d	03-Dec-15	18-Dec-15	0%	[Gantt bar: 03-Dec-15 to 18-Dec-15]																							
MAS1465	Maint. Access Subway Ramp A, Bay A6 - RC Wall formworks removal	2d	19-Dec-15	21-Dec-15	0%	[Gantt bar: 19-Dec-15 to 21-Dec-15]																							
MAS1470	Maint. Access Subway Ramp A, Bay A6 - Staircase (formworks, rebar fixing, concreting)	5d	22-Dec-15	29-Dec-15	0%	[Gantt bar: 22-Dec-15 to 29-Dec-15]																							
MAS1475	Maint. Access Subway Ramp A, Bay A6 - Staircase formworks removal	3d	30-Dec-15	02-Jan-16	0%	[Gantt bar: 30-Dec-15 to 02-Jan-16]																							
Bay A5																													
MAS1480	Maint. Access Subway Ramp A, Bay A5 - Excavation works, blinding layer	14d	16-Oct-15 A	24-Nov-15	90%	[Gantt bar: 16-Oct-15 to 24-Nov-15]																							
MAS1485	Maint. Access Subway Ramp A, Bay A5 - Base Slab (formworks, rebar fixing, concreting)	9d	25-Nov-15	04-Dec-15	0%	[Gantt bar: 25-Nov-15 to 04-Dec-15]																							
MAS1495	Maint. Access Subway Ramp A, Bay A5 - RC Wall (formworks, rebar fixing, concreting)	14d	05-Dec-15	21-Dec-15	0%	[Gantt bar: 05-Dec-15 to 21-Dec-15]																							
MAS1505	Maint. Access Subway Ramp A, Bay A5 - RC Wall formworks removal	2d	22-Dec-15	23-Dec-15	0%	[Gantt bar: 22-Dec-15 to 23-Dec-15]																							
MAS1515	Maint. Access Subway Ramp A, Bay A5 - Staircase (formworks, rebar fixing, concreting)	5d	24-Dec-15	31-Dec-15	0%	[Gantt bar: 24-Dec-15 to 31-Dec-15]																							
MAS1525	Maint. Access Subway Ramp A, Bay A5 - Staircase formworks removal	3d	02-Jan-16	05-Jan-16	0%	[Gantt bar: 02-Jan-16 to 05-Jan-16]																							
Bay A4																													
MAS1535	Maint. Access Subway Ramp A, Bay A4 - Excavation works, blinding layer	14d	16-Oct-15 A	21-Nov-15	90%	[Gantt bar: 16-Oct-15 to 21-Nov-15]																							
MAS1545	Maint. Access Subway Ramp A, Bay A4 - Base Slab (formworks, rebar fixing, concreting)	9d	25-Nov-15	04-Dec-15	0%	[Gantt bar: 25-Nov-15 to 04-Dec-15]																							
MAS1555	Maint. Access Subway Ramp A, Bay A4 - RC Wall (formworks, rebar fixing, concreting)	14d	05-Dec-15	21-Dec-15	0%	[Gantt bar: 05-Dec-15 to 21-Dec-15]																							
MAS1565	Maint. Access Subway Ramp A, Bay A4 - RC Wall formworks removal	2d	22-Dec-15	23-Dec-15	0%	[Gantt bar: 22-Dec-15 to 23-Dec-15]																							
MAS1575	Maint. Access Subway Ramp A, Bay A4 - Staircase (formworks, rebar fixing, concreting)	5d	24-Dec-15	31-Dec-15	0%	[Gantt bar: 24-Dec-15 to 31-Dec-15]																							
MAS1585	Maint. Access Subway Ramp A, Bay A4 - Staircase formworks removal	3d	02-Jan-16	05-Jan-16	0%	[Gantt bar: 02-Jan-16 to 05-Jan-16]																							
Bay A3																													
MAS1595	Maint. Access Subway Ramp A, Bay A3 - Excavation works, blinding layer	14d	02-Oct-15 A	19-Nov-15 A	100%	[Gantt bar: 02-Oct-15 to 19-Nov-15]																							
MAS1605	Maint. Access Subway Ramp A, Bay A3 - Base Slab (formworks, rebar fixing, concreting)	8d	21-Nov-15	30-Nov-15	0%	[Gantt bar: 21-Nov-15 to 30-Nov-15]																							
MAS1615	Maint. Access Subway Ramp A, Bay A3 - RC Wall (formworks, rebar fixing, concreting)	14d	05-Dec-15	21-Dec-15	0%	[Gantt bar: 05-Dec-15 to 21-Dec-15]																							
MAS1625	Maint. Access Subway Ramp A, Bay A3 - RC Wall formworks removal	2d	22-Dec-15	23-Dec-15	0%	[Gantt bar: 22-Dec-15 to 23-Dec-15]																							
MAS1635	Maint. Access Subway Ramp A, Bay A3 - Staircase (formworks, rebar fixing, concreting)	5d	24-Dec-15	31-Dec-15	0%	[Gantt bar: 24-Dec-15 to 31-Dec-15]																							
MAS1645	Maint. Access Subway Ramp A, Bay A3 - Staircase formworks removal	3d	02-Jan-16	05-Jan-16	0%	[Gantt bar: 02-Jan-16 to 05-Jan-16]																							
MAS1655	Maint. Access Subway Ramp A, Bay A3 - Top slab (internal falseworks, formworks, rebar fixing, concreting)	5d	06-Jan-16	11-Jan-16	0%	[Gantt bar: 06-Jan-16 to 11-Jan-16]																							
MAS1665	Maint. Access Subway Ramp A, Bay A3 - Top Slab formworks removal	3d	12-Jan-16	14-Jan-16	0%	[Gantt bar: 12-Jan-16 to 14-Jan-16]																							
Bay A2																													
MAS1675	Maint. Access Subway Ramp A, Bay A2 - Excavation works, blinding layer	14d	02-Oct-15 A	19-Nov-15 A	100%	[Gantt bar: 02-Oct-15 to 19-Nov-15]																							
MAS1685	Maint. Access Subway Ramp A, Bay A2 - Base Slab (formworks, rebar fixing, concreting)	8d	21-Nov-15	30-Nov-15	0%	[Gantt bar: 21-Nov-15 to 30-Nov-15]																							
MAS1695	Maint. Access Subway Ramp A, Bay A2 - RC Wall (formworks, rebar fixing, concreting)	14d	22-Dec-15	09-Jan-16	0%	[Gantt bar: 22-Dec-15 to 09-Jan-16]																							
MAS1705	Maint. Access Subway Ramp A, Bay A2 - RC Wall formworks removal	2d	11-Jan-16	12-Jan-16	0%	[Gantt bar: 11-Jan-16 to 12-Jan-16]																							
MAS1715	Maint. Access Subway Ramp A, Bay A2 - Staircase (formworks, rebar fixing, concreting)	5d	13-Jan-16	18-Jan-16	0%	[Gantt bar: 13-Jan-16 to 18-Jan-16]																							
MAS1725	Maint. Access Subway Ramp A, Bay A2 - Staircase formworks removal	3d	19-Jan-16	21-Jan-16	0%	[Gantt bar: 19-Jan-16 to 21-Jan-16]																							
MAS1735	Maint. Access Subway Ramp A, Bay A2 - Top slab (internal falseworks, formworks, rebar fixing, concreting)	5d	22-Jan-16	27-Jan-16	0%	[Gantt bar: 22-Jan-16 to 27-Jan-16]																							
MAS1745	Maint. Access Subway Ramp A, Bay A2 - Top Slab formworks removal	3d	28-Jan-16	30-Jan-16	0%	[Gantt bar: 28-Jan-16 to 30-Jan-16]																							
Bay A1																													
MAS1755	Maint. Access Subway Ramp A, Bay A1 - Excavation works, blinding layer	14d	02-Oct-15 A	19-Nov-15 A	100%	[Gantt bar: 02-Oct-15 to 19-Nov-15]																							
MAS1765	Maint. Access Subway Ramp A, Bay A1 - Base Slab (formworks, rebar fixing, concreting)	9d	21-Nov-15	01-Dec-15	0%	[Gantt bar: 21-Nov-15 to 01-Dec-15]																							
MAS1775	Maint. Access Subway Ramp A, Bay A1 - RC Wall (formworks, rebar fixing, concreting)	14d	22-Dec-15	09-Jan-16	0%	[Gantt bar: 22-Dec-15 to 09-Jan-16]																							
MAS1785	Maint. Access Subway Ramp A, Bay A1 - RC Wall formworks removal	2d	11-Jan-16	12-Jan-16	0%	[Gantt bar: 11-Jan-16 to 12-Jan-16]																							
MAS1795	Maint. Access Subway Ramp A, Bay A1 - Staircase (formworks, rebar fixing, concreting)	5d	13-Jan-16	18-Jan-16	0%	[Gantt bar: 13-Jan-16 to 18-Jan-16]																							
MAS1805	Maint. Access Subway Ramp A, Bay A1 - Staircase formworks removal	3d	19-Jan-16	21-Jan-16	0%	[Gantt bar: 19-Jan-16 to 21-Jan-16]																							
MAS1815	Maint. Access Subway Ramp A, Bay A1 - Top slab (internal falseworks, formworks, rebar fixing, concreting)	5d	22-Jan-16	27-Jan-16	0%	[Gantt bar: 22-Jan-16 to 27-Jan-16]																							
MAS1825	Maint. Access Subway Ramp A, Bay A1 - Top Slab formworks removal	3d	28-Jan-16	30-Jan-16	0%	[Gantt bar: 28-Jan-16 to 30-Jan-16]																							
RAMP C&D (Reclamation Area)																													
MAS1350	Maint. Access Subway Ramp C & D - Mini pile installation works, 56 nos./56 nos. (8nos. remaining)	6d	14-Dec-15	19-Dec-15	30%	[Gantt bar: 14-Dec-15 to 19-Dec-15]																							
MAS1360	Maint. Access Subway Ramp C & D - Mini pile installation works, 56 nos./56 nos.	7d	21-Dec-15	30-Dec-15	0%	[Gantt bar: 21-Dec-15 to 30-Dec-15]																							
Bay C6																													
MAS1370	Maint. Access Subway Ramp A, Bay C6 - Excavation works, blinding layer	8d	31-Dec-15	09-Jan-16	0%	[Gantt bar: 31-Dec-15 to 09-Jan-16]																							
MAS1380	Maint. Access Subway Ramp A, Bay C6 - Base Slab (formworks, rebar fixing, concreting)	8d	11-Jan-16	19-Jan-16	0%	[Gantt bar: 11-Jan-16 to 19-Jan-16]																							
MAS1390	Maint. Access Subway Ramp A, Bay C6 - Wall & Roof slab (formworks, rebar fixing, concreting)	14d	20-Jan-16	04-Feb-16	0%	[Gantt bar: 20-Jan-16 to 04-Feb-16]																							
MAS1400	Maint. Access Subway Ramp A, Bay C6 - Removal of formworks	3d	05-Feb-16	11-Feb-16	0%	[Gantt bar: 05-Feb-16 to 11-Feb-16]																							
Bay C5																													
MAS1410	Maint. Access Subway Ramp A, Bay C5 - Excavation works, blinding layer	8d	11-Jan-16	19-Jan-16	0%	[Gantt bar: 11-Jan-16 to 19-Jan-16]																							
MAS1420	Maint. Access Subway Ramp A, Bay C5 - Base Slab (formworks, rebar fixing, concreting)	8d	20-Jan-16	28-Jan-16	0%	[Gantt bar: 20-Jan-16 to 28-Jan-16]																							
MAS1430	Maint. Access Subway Ramp A, Bay C5 - Wall & Roof slab (formworks, rebar fixing, concreting)	14d	29-Jan-16	17-Feb-16	0%	[Gantt bar: 29-Jan-16 to 17-Feb-16]																							
MAS1440	Maint. Access Subway Ramp A, Bay C5 - Removal of formworks	3d	18-Feb-16	20-Feb-16	0%	[Gantt bar: 18-Feb-16 to 20-Feb-16]																							
T001 / T002 ON GRADE ROADWORKS (Works under Section 1)																													
Interface w/ HY2010/02-16-045 to 16+223.24																													
A23730	LR SH-HKBCF (north area-Portion C) - Temporary work for Pump Sump P/S SPS7, Delivery of sheet piles & mobilization work	15d	10-Aug-15 A	07-Dec-15	30%	[Gantt bar: 10-Aug-15 to 07-Dec-15]																							
A237301	LR SH-HKBCF (north area-Portion C) - Temporary work for Pump Sump P/S SPS7, Sheet piles installation, Stage 1	16d	08-Dec-15	28-Dec-15	0%	[Gantt bar: 08-Dec-15 to 28-Dec-15]																							
A237302	LR SH-HKBCF (north area-Portion C) - Temporary work for Pump Sump P/S SPS7, Sheet piles installation, Stage 2	16d	29-Dec-15	16-Jan-16	0%	[Gantt bar: 29-Dec-15 to 16-Jan-16]																							
A237401	LR SH-HKBCF (north area-Portion C) - Temporary work for Pump Sump P/S SPS7, Sheet piles installation, Stage 3	15d	18-Jan-16	03-Feb-16	0%	[Gantt bar: 18-Jan-16 to 03-Feb-16]																							
A237402	LR SH-HKBCF (north area-Portion C) - Excavation for Pump Sump P/S SPS7, 1st Stage	15d	04-Feb-16	24-Feb-16	0%	[Gantt bar: 04-Feb-16 to 24-Feb-16]																							
NB AIRPORT ROAD WORKS (INCL. BA2) - under Section 2 (Middle to North Area)																													
Works in Bridge A2, under Stage 1 TTA, Diversion of NB Airport Rd (Works under Section 2)																													
Decking																													
Span B7-South Abutment																													
BA2.1830-98	Bridge A2 - Stressing Works, span B7-South Abutment	4d	09-Dec-15	12-Dec-15	0%	[Gantt bar: 09-Dec-15 to 12-Dec-15]																							
Works in Bridge A2, under Stage 2 TTA, Diversion of SB Airport Rd (Works under Section 2)																													
BA2-Initial Works																													
NCW1070.009	Implement Stage 2 TTA	0d		27-Nov-15*	0%	[Gantt bar: 27-Nov-15]																							
NCW1070.019	Bridge A2 North Abut. & Ramp - Site clearance and preparation works	10d	28-Nov-15	09-Dec-15	0%	[Gantt bar: 28-Nov-15 to 09-Dec-15]																							
BA2.1200-1	Bridge A2 North Abut. & Ramp - Pre-drilling works, 1st half	12d	10-Dec-15	23-Dec-15	0%	[Gantt bar: 10-Dec-15 to 23-Dec-15]																							
BA2.1200-3	Bridge A2 Piers - Pre-drilling works, 1st half	12d	10-Dec-15	23-Dec-15	0%	[Gantt bar: 10-Dec-15 to 23-Dec-15]																							
BA2.1200-2	Bridge A2 North Abut. & Ramp - Pre-drilling works, 2nd half	12d	24-Dec-15	09-Jan-16	0%	[Gantt bar: 24-Dec-15 to 09-Jan-16]																							
BA2.1200-4	Bridge A2 Piers - Pre-drilling works, 2nd half	12d	24-Dec-15	09-Jan-16	0%	[Gantt bar: 24-Dec-15 to 09-Jan-16]																							
BA2-North Abutment and Ramp																													
BA2.1205-1	Bridge A2 North Abut. & Ramp - Pre-bored h-piles, 1st half	12d	11-Jan-16	23-Jan-16	0%	[Gantt bar: 11-Jan-16 to 23-Jan-16]																							
BA2.1205-2	Bridge A2 North Abut. & Ramp - Pre-bored h-piles, 2nd half	12d	25-Jan-16	06-Feb-16	0%	[Gantt bar: 25-Jan-16 to 06-Feb-16]																							
BA2.1205-3	Bridge A2 North Abut. & Ramp - Pile cap - Excavation, blinding layer	12d	11-Feb-16	24-Feb-16	0%	[Gantt bar: 11-Feb-16 to 24-Feb-16]																							
Utility Culverts 1, 2 & 3 (Works under Section 2)																													
Utility Culvert No. 2 Ext. near Bridge A2 [15m Approx.] (Works under Section 2)																													
RC Works for UC2																													
UC2.1080	Util. Culvert No. 2 Ext. - Chamber modification	15d	12-Sep-15 A	11-Nov-15 A	100%	[Gantt bar: 12-Sep-15 to 11-Nov-15]																							
Permanent Utility Diversion inside UC2																													
UC2.10524	Permanent Utility Diversion - sewer main (by CSHK), preparation for connection works	15d	19-Aug-15 A	07-Dec-15	50%	[Gantt bar: 19-Aug-15 to 07-Dec-15]																							
UC2.10525	Permanent Utility Diversion - sewer main (by CSHK), connection works	7d	08-Dec-15	15-Dec-15	0%	[Gantt bar: 08-Dec-15 to 15-Dec-15]																							
Utility Culvert No. 3 and Permanent Utility Diversion for Stage 3 TTA																													
RC Works for UC3																													
Culvert Structure																													
4th Bay (L=12m)																													
UC3.1427	New Util. Culvert No. 3 - Culvert structure - 4th bay, Backfilling works	5d	05-Nov-15 A	27-Nov-15	0%	[Gantt bar: 05-Nov-15 to 27-Nov-15]																							
5th Bay (L=15m)																													
UC3.1524	New Util. Culvert No. 3 - Culvert structure - 5th bay, Backfilling works	5d	05-Nov-15 A	27-Nov-15	0%	[Gantt bar: 05-Nov-15 to 27-Nov-15]																							
6th Bay (L=13m)																													
UC3.1527	New Util. Culvert No. 3 - Culvert structure - 6th bay, Backfilling works	6d	28-Nov-15	04-Dec-15	0%	[Gantt bar: 28-Nov-15 to 04-Dec-15]																							
7th Bay (L=9m)																													
UC3.1530	New Util. Culvert No. 3 - Culvert structure - 7th bay, Backfilling works	6d	05-Dec-15	11-Dec-15	0%	[Gantt bar: 05-Dec-15 to 11-Dec-15]																							
8th Bay (L=4m)																													
UC3.1532	New Util. Culvert No. 3 - Culvert structure - 8th bay, Wall & Roof	12d	04-Nov-15 A	03-Dec-15	0%	[Gantt bar: 04-Nov-15 to 03-Dec-15]																							
UC3.1533	New Util. Culvert No. 3 - Culvert structure - 8th bay, Backfilling works	6d	04-Dec-15	10-Dec-15	0%	[Gantt bar: 04-Dec-15 to 10-Dec-15]																							
9th Bay (L=5m)																													
UC3.1554	New Util. Culvert No. 3 - Culvert structure - 9th bay, Wall & Roof	12d	04-Nov-15 A	03-Dec-15	0%	[Gantt bar: 04-Nov-15 to 03-Dec-15]																							
UC3.1564	New Util. Culvert No. 3 - Culvert structure - 9th bay, Backfilling works	6d	04-Dec-15	10-Dec-15	0%	[Gantt bar: 04-Dec-15 to 10-Dec-15]																							
10th Bay (L=12m)																													
UC3.1534	New Util. Culvert No. 3 Structure Complete	0d		03-Dec-15	0%	[Gantt bar: 03-Dec-15]																							
UC3.1562	New Util. Culvert No. 3 - Culvert structure - 10th bay, Backfilling works	2d	09-Dec-15	10-Dec-15	0%	[Gantt bar: 09-Dec-15 to 10-Dec-15]																							
Permanent Utilities Diversion inside UC3																													
A2680-1	Permanent Utility diversion inside UC3 - Sewage Rising Main (by CSHK), pipe laying - Stage 1	15d	29-Oct-15 A	16-Nov-15 A	100%	[Gantt bar: 29-Oct-15 to 16-Nov-15]																							
A2690-1	Permanent Utility diversion inside UC3 - Freshwater Main (by CSHK), pipe laying - Stage 1	15d	29-Oct-15 A	16-Nov-15 A	100%	[Gantt bar: 29-Oct-15 to 16-Nov-15]																							
A2690-2	Permanent Utility diversion inside UC3 - Freshwater Main (by CSHK), pipe laying - Stage 2	15d	17-Nov-15 A	02-Dec-15	25%	[Gantt bar: 17-Nov-15 to 02-Dec-15]																							
A2690-2	Permanent Utility diversion inside UC3 - Sewage Rising Main (by CSHK), pipe laying - Stage 2	15d	17-Nov-15 A	02-Dec-15	25%	[Gantt bar: 17-Nov-15 to 02-Dec-15]																							
A2680-3	Permanent Utility diversion inside UC3 - Sewage Rising Main (by CSHK), pipe laying - Stage 3	15d	03-Dec-15	19-Dec-15	0%	[Gantt bar: 03-Dec-15 to 19-Dec-15]																							
A2690-3	Permanent Utility diversion inside UC3 - Freshwater Main (by CSHK), pipe laying - Stage 3	15d	03-Dec-15	19-Dec-15	0%	[Gantt bar: 03-Dec-15 to 19-Dec-15]																							

