

香港電燈有限公司
The Hongkong Electric Co., Ltd.



**Lamma Power Station
Units L2, L4 & L5 Flue Gas Desulphurization
Plants Retrofit**

Operational Phase

Quarterly Environmental Monitoring & Audit Report

October – December 2024

香港電燈有限公司
The Hongkong Electric Co., Ltd.



ENVIRONMENTAL IMPACT ASSESSMENT (EIA) ORDINANCE, CAP. 499

ENVIRONMENTAL PERMITS NO. EP-248/2006 & EP-287/2007

**LAMMA POWER STATION
UNITS L2, L4 & L5 FLUE GAS DESULPHURIZATION PLANTS RETROFIT**

**ENVIRONMENTAL MONITORING & AUDIT PROGRAMME
AT OPERATIONAL PHASE**


Report Title	Quarterly EM&A Report (October to December 2024)
Date	25 March 2025
Certified by	 (Mr. CHAN Hon Yeung, Environmental Team Leader)

TABLE OF CONTENT

EXECUTIVE SUMMARY

1.	INTRODUCTION.....	1
1.1	Background	1
1.2	Project Organisation	1
1.3	Plant Availability during the Reporting Period	2
1.4	Malfunction/Outage Records of Pollution Control Equipment	2
1.5	Summary of EM&A Requirements	2
2.	AIR QUALITY.....	10
2.1	Monitoring Requirements	10
2.2	Summary of Results and Observations	10
3.	WATER QUALITY.....	11
3.1	Monitoring Requirements	11
3.2	Summary of Results and Observations	11
4.	ENVIRONMENTAL AUDIT.....	12
4.1	Review of Environmental Monitoring Procedures	12
4.2	Assessment of Environmental Monitoring Results	12
4.3	Status of Environmental Licensing and Permitting	13
4.4	Implementation Status of Environmental Mitigation Measures	14
4.5	Implementation Status of Event/Action Plan	14
4.6	Implementation Status of Environmental Complaint Handling Procedures	14
5.	FUTURE KEY ISSUES.....	16
5.1	Outage Plan for the coming 3 months	16
5.2	Key issues for the coming 3 months	16
6.	CONCLUSION.....	17

LIST OF TABLES

Table 2.1	Air Quality Monitoring Parameters and Frequency
Table 3.1	Water Quality Monitoring Parameters and Frequencies
Table 4.1	Summary of Action/Limit Level Exceedances on Monitoring Parameters
Table 4.2	Amount of Gypsum and Sludge Collected for Reuse by Contractor
Table 4.3	Summary of Environmental Licensing and Permit Status
Table 4.4	Environmental Complaints Received
Table 4.5	Outstanding Environmental Complaints Carried Over

LIST OF FIGURES

Figure 1.1a	Location of New Facilities for L4 & L5 FGD Plant
Figure 1.1b	Location of New Facilities for L2 FGD Plant
Figure 1.2a	General Arrangement of L4 & L5 FGD Plant
Figure 1.2b	General Arrangement of L2 FGD Plant
Figure 1.3	Schematic Diagram of L2, L4 & L5 FGD Plant
Figure 1.4	Simplified Schematic Diagram of FGD Wastewater Treatment Plant
Figure 1.5	Organization Chart at Operational Phase

APPENDIX

Appendix A	Event/Action Plans in Response to Exceedance of AL Levels
Appendix B	Air Quality Monitoring Results
Appendix C	Summary Results on Water Quality Monitoring
Appendix D	Summary of EMIS

EXECUTIVE SUMMARY

This is the quarterly Environmental Monitoring and Audit (EM&A) report for the Projects “Lamma Power Station Units L4 & L5 Flue Gas Desulphurization Plant Retrofit” and “Lamma Power Station Unit L2 Flue Gas Desulphurization Plant Retrofit” prepared by the Environmental Team (ET). This report presents the results of impact monitoring on air and water quality and environmental audit for the operation of the said projects in the period from October to December 2024.

Environmental monitoring for air quality and water quality were carried out for the purpose of this EM&A program as well as for fulfilling the requirements stipulated in the relevant licences. The results were checked against the established Action/Limit (AL) levels. The implementation status of the environmental mitigation measures, Event/Action Plan and environmental complaint handling procedures were also checked.

Plant Availability

Unit L2 and Unit L4 were retired in October 2022 and January 2024 respectively. Unit L5 was retired in June 2024 and would be used for emergency generation if required.

Malfunction/Outage Records of Pollution Control Equipment

There were no major/minor outages of the Pollution Control Equipment during the reporting period.

Environmental Monitoring Works

Environmental monitoring works were performed during the operation of Units L2, L4 and L5 FGD Plants in the reporting period.

Air Quality

No exceedance of Action and Limit levels for air quality were recorded in the reporting period.

Water Quality

No exceedance of Action and Limit levels for water quality were recorded in the reporting period.

Environmental Licensing and Permitting

Description	Permit / Licence No.	Valid Period		Issued To	Date of Issuance
		From	To		
Environmental Permit for L4/5 FGD plants retrofit project	EP-248/2006	25/04/2006	-	HK Electric	25/04/2006
Environmental Permit for Unit L2 FGD plant retrofit project	EP-287/2007	02/10/2007	-	HK Electric	02/10/2007
Specified Process Licence issued under APCO	L-7-002(14)	01/01/2023	31/12/2024	HK Electric	30/12/2022
WPCO discharge licence for Ash Lagoon	WT00039618-2021	11/02/2022	31/12/2026	HK Electric	11/02/2022

Implementation Status of Environmental Mitigation Measures

Environmental mitigation measures were implemented in the reporting period.

Environmental Complaints / Feedback Cases

During the reporting period, there was no environmental complaint or feedback case regarding the operation of Lamma Power Station.

Future key issues

Key issues to be considered in the coming months include:

Air Impact

- To continuously carry out the air quality monitoring for Units L2, L4 and L5 (if emergency generation is required).

Water Impact

- To continuously carry out the water quality monitoring for FGD WWT plant.

Concluding Remarks

The environmental performance of the projects was generally satisfactory.

1. INTRODUCTION

The Environmental Team (hereinafter called the “ET”) was formed within The Hongkong Electric Co. Ltd (HK Electric) to undertake Environmental Monitoring and Audit for the “Operation of Lamma Power Station Units L4 & L5 Flue Gas Desulphurization Plant Retrofit Project” under the requirements of Clause 2.18 of Environmental Permit (EP) No. EP-248/2006 and “Operation of Lamma Power Station Unit L2 Flue Gas Desulphurization Plant Retrofit Project” under the requirements of Clause 2.10 of Environmental Permit (EP) No. EP-287/2007.

This report summarizes the environmental monitoring and audit work for the said Projects for the period from October to December 2024.

1.1 Background

The Projects involves retrofitting the three existing coal-fired generating Units L2, L4 and L5 of Lamma Power Station with Flue Gas Desulphurisation (FGD) plants for reducing sulphur dioxide emissions in support of Government policy to improve the air quality of the Pearl River Delta.

The Projects include the installation and operation of FGD plants with flue gas desulphurization efficiency of 90% for the three coal-fired Units L2, L4 & L5 to reduce the overall SO₂ emissions from Lamma Power Station. The process adopted for the FGD plants is “Wet Limestone-Gypsum”, a technology which has already been used in, and proved effective and reliable for the existing coal-fired units L6, L7 & L8. The flue gas from the boiler is directed to the FGD absorber inside which removal of SO₂ is take place by reaction with limestone slurry. After passing through the absorber, the treated flue gas is heated up by a gas-gas heater to over 80°C at boiler rated capacity and directed back to the existing chimney for discharge to the atmosphere. [Figure 1.1a](#), [Figure 1.1b](#), [Figure 1.2a](#), [Figure 1.2b](#) and [Figure 1.3](#) show the location and schematic of the FGD plants.

Wastewater filtrated from the reacted limestone slurry, i.e. gypsum slurry, is produced and it is directed to the existing FGD wastewater treatment plant (WWTP). The FGD WWTP is designed to treat the effluent from FGD plants by alkalization, precipitation and neutralization processes. The schematic diagram of the FGD WWTP is illustrated in [Figure 1.4](#).

The additional equipment for the FGD Plants retrofit projects for Units L2, L4 and L5 includes:

- Three sets of FGD absorbers and associated ductworks
- Three sets of booster fans
- Three sets of gas-gas heaters
- Two FGD Switchgear and Equipment Buildings
- Gypsum dewatering system comprising two sets of hydrocyclones and belt filters

1.2 Project Organisation

The management structure to oversee the Projects includes the following:

- Environmental Protection Department (The Authority);
- General Manager (Corporate Development) (The official contact person between HK Electric and EPD);
- Environmental Team Leader (ET Leader);

- Environmental Team (ET).

The organization chart for the Operation EM&A programme is shown in [Figure 1.5](#).

1.3 Plant Availability during the Reporting Period

Unit L2 and Unit L4 were retired in October 2022 and January 2024 respectively. Unit L5 was retired in June 2024 and would be used for emergency generation if required.

1.4 Malfunction/Outage Records of Pollution Control Equipment

There were no major/minor outages of the Pollution Control Equipment during the reporting period.

1.5 Summary of EM&A Requirements

Environmental Monitoring and Audit (EM&A) requirements have been discussed in the Environmental Impact Assessment (EIA) Report/ Project Profile for the Projects. The assessment results indicate that environmental monitoring works required for the EM&A programmes of these Projects are already in place or would be implemented under Lamma Power Station Extension Environmental Permit or environmental licenses for the operation of the existing Lamma Power Station. Such monitoring works are considered adequate for the Projects and no additional EM&A activities are required. Hence, environmental monitoring for air quality and water quality are carried out for the purpose of this EM&A program as well as for fulfilling the requirements stipulated in the relevant licences.

The EM&A monitoring work for air and water quality are described in [Section 2](#) and [Section 3](#) respectively.

The following environmental audits are summarized in [Section 4](#) of the report:

- Environmental monitoring results;
- The status of environmental licensing and permits for the Projects;
- The implementation status of environmental protection and pollution control / mitigation measures.

The future key issues for the Projects will be reported in [Section 5](#) of this report.

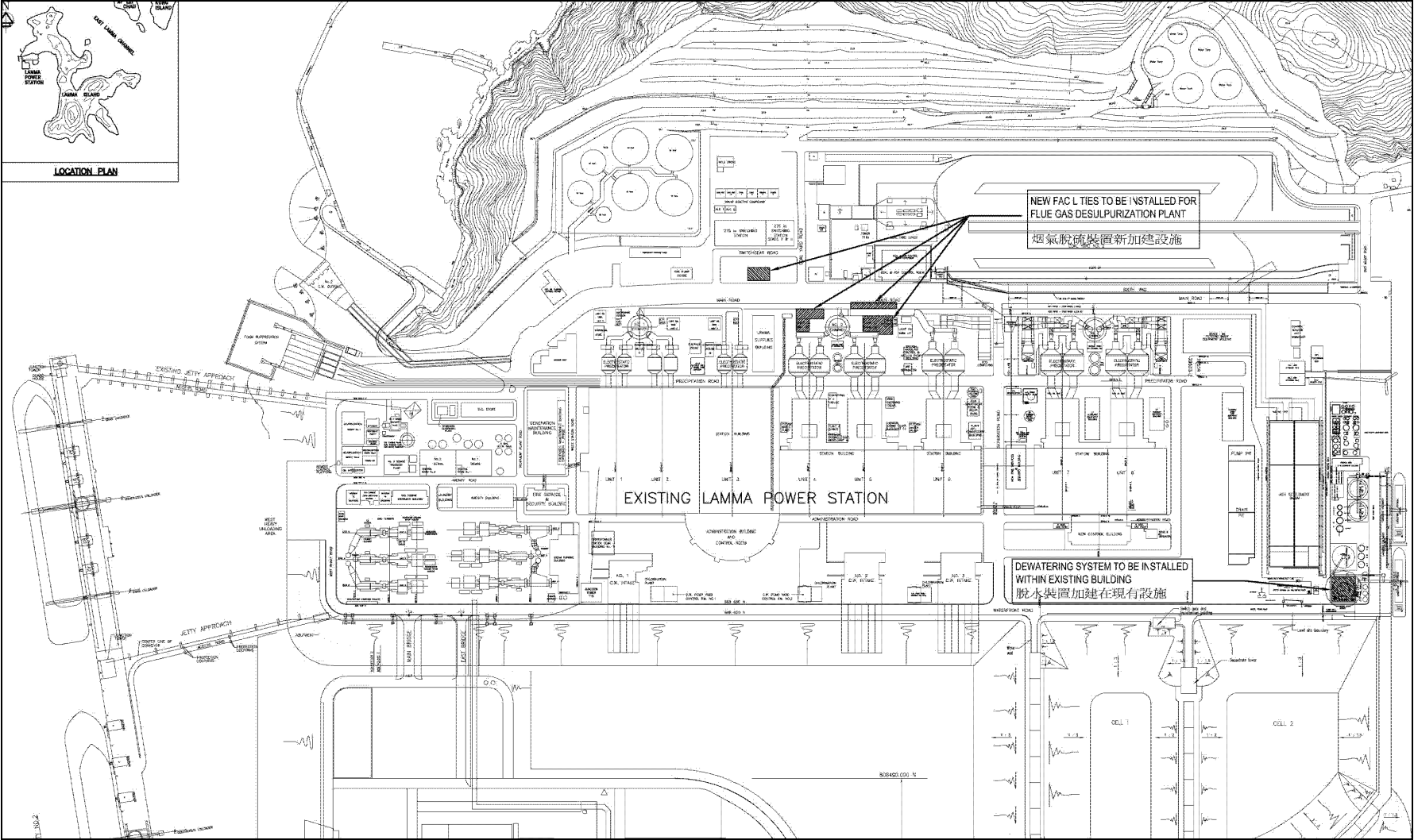


Figure 1.1a Location of New Facilities for L4 & L5 FGD Plants

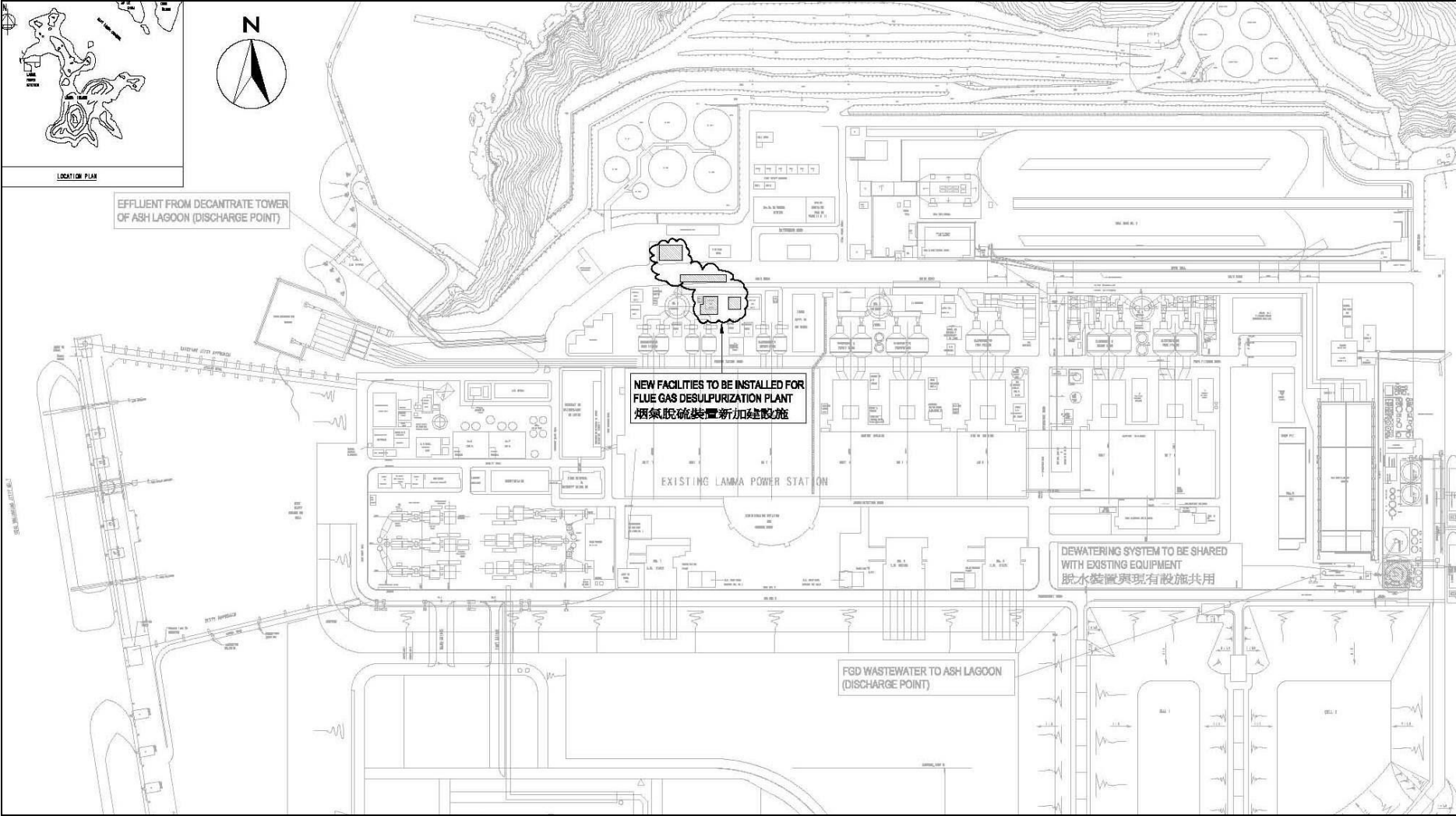


Figure 1.1b Location of New Facilities for L2 FGD Plant

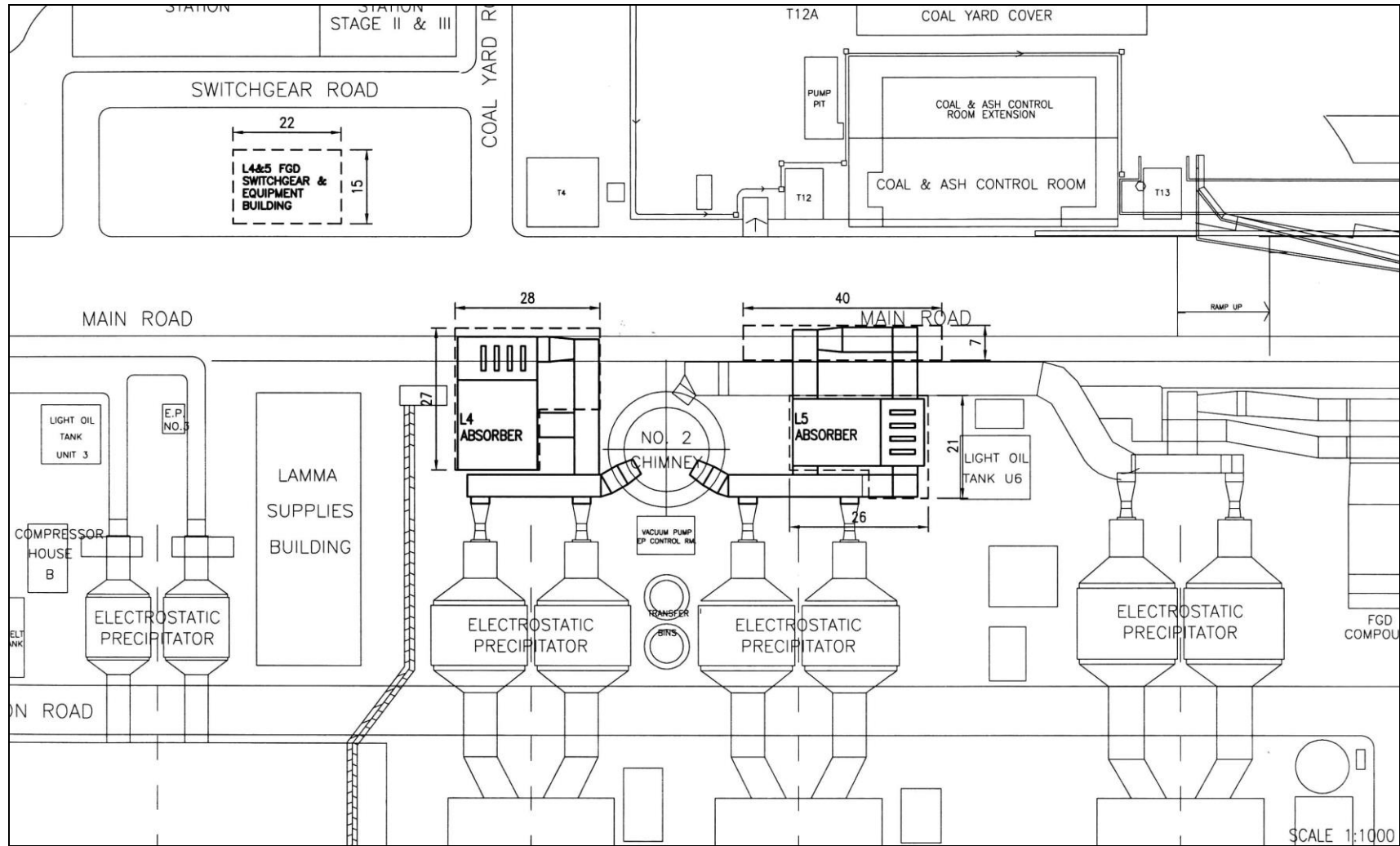


Figure 1.2a General Arrangement of L4 & L5 FGD Plants

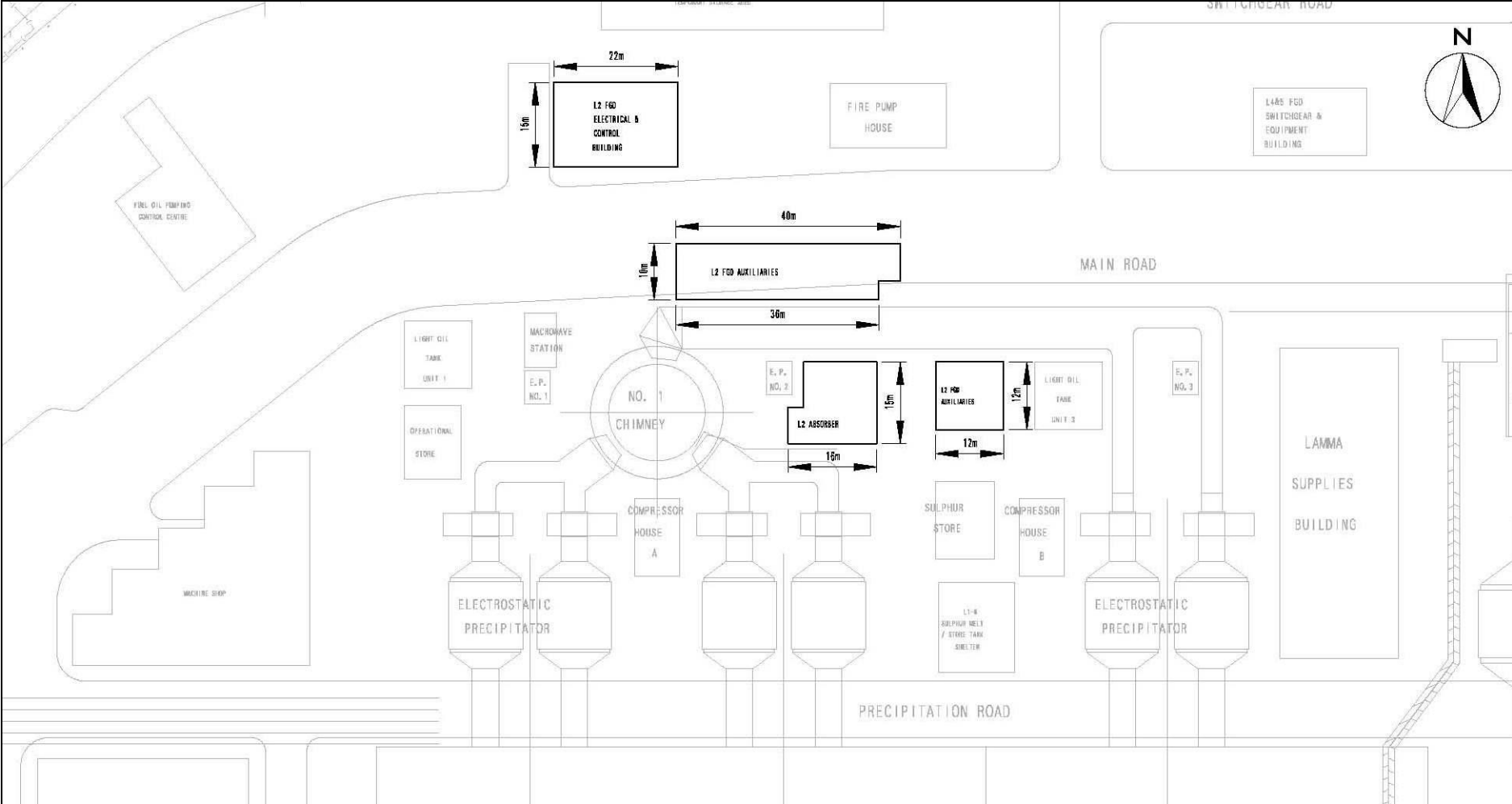


Figure 1.2b General Arrangement of L2 FGD Plant

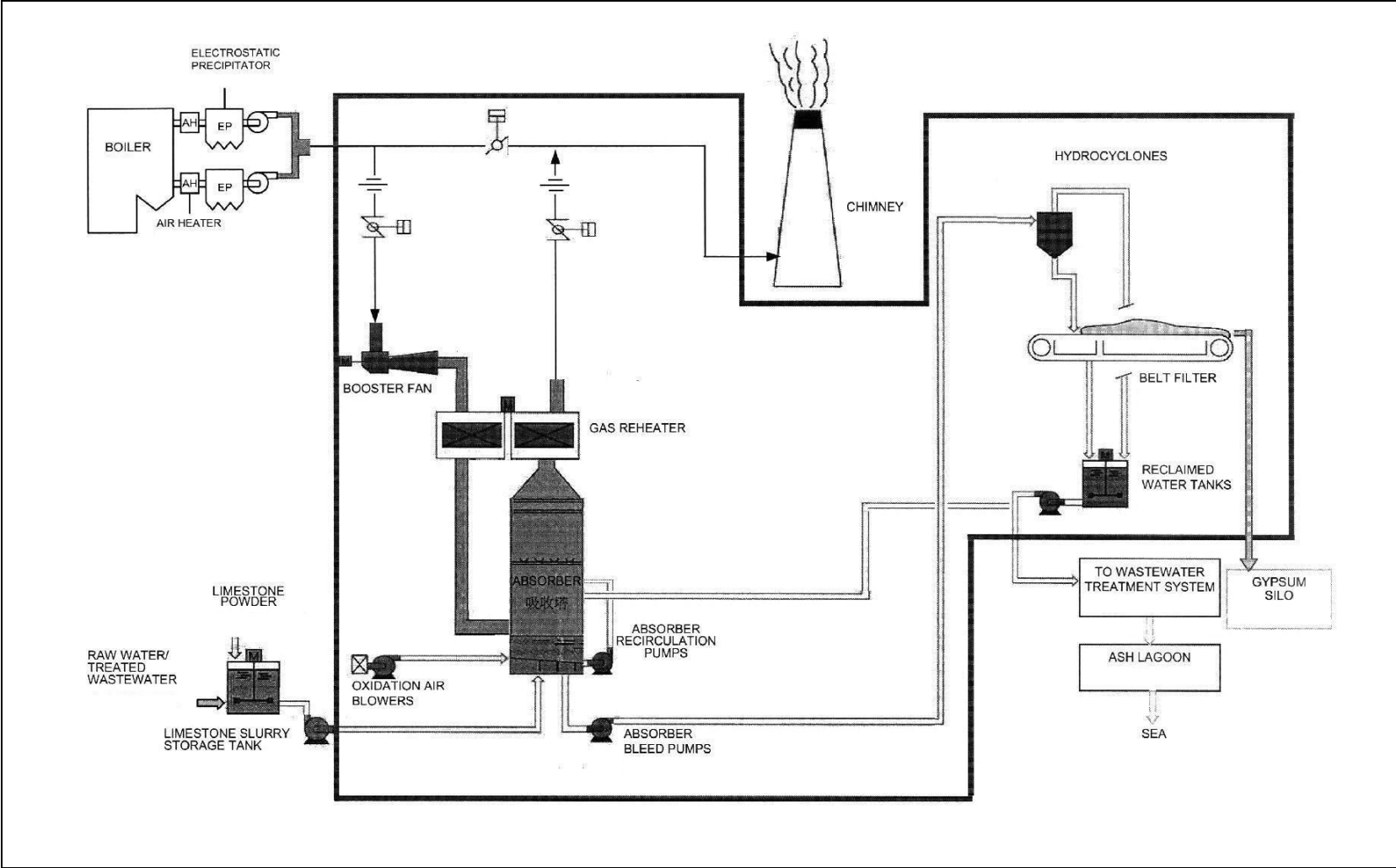


Figure 1.3 Schematic Diagram of the L2, L4 & L5 FGD Plant

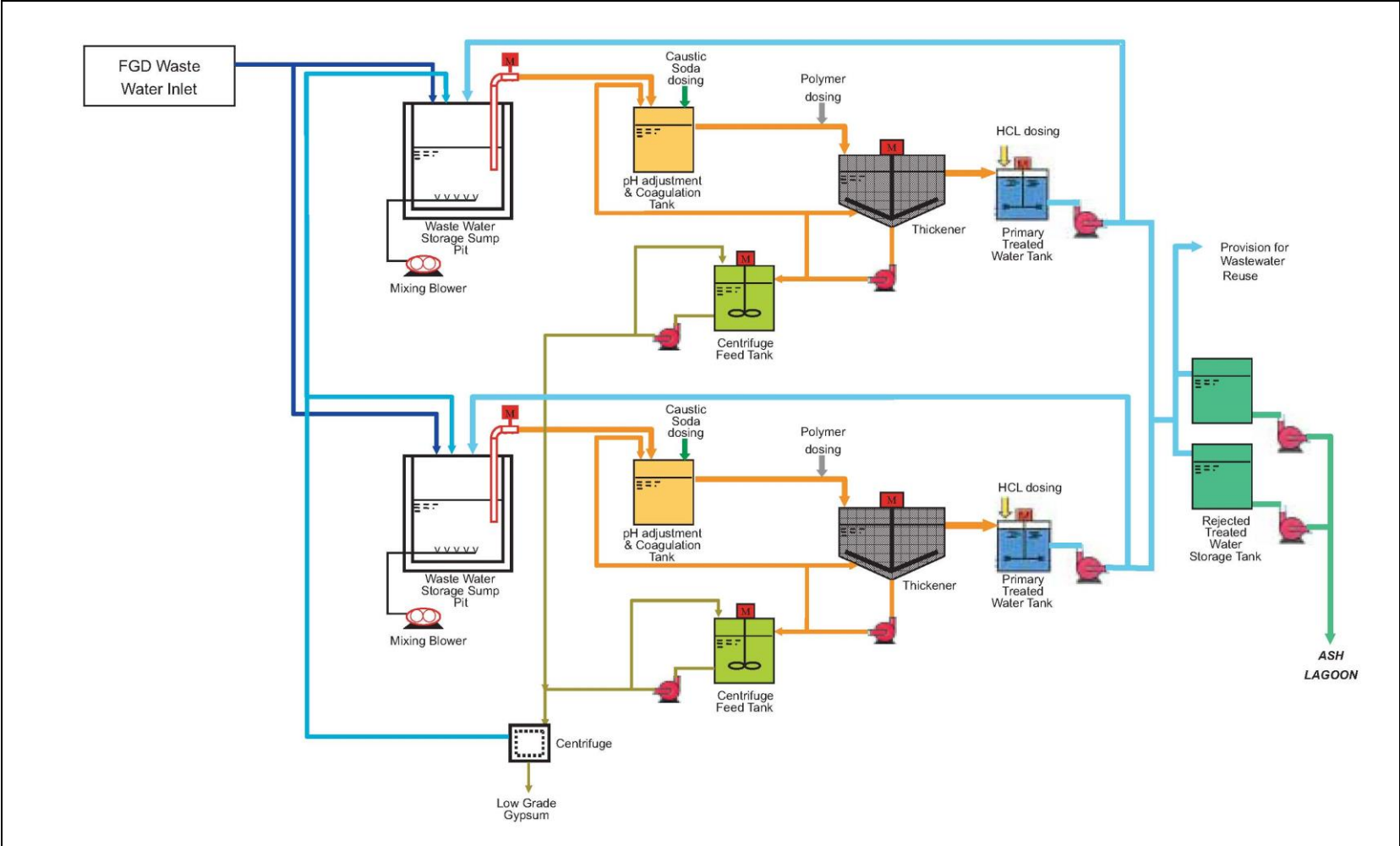


Figure 1.4 Simplified Schematic Diagram of FGD Wastewater Treatment Plant

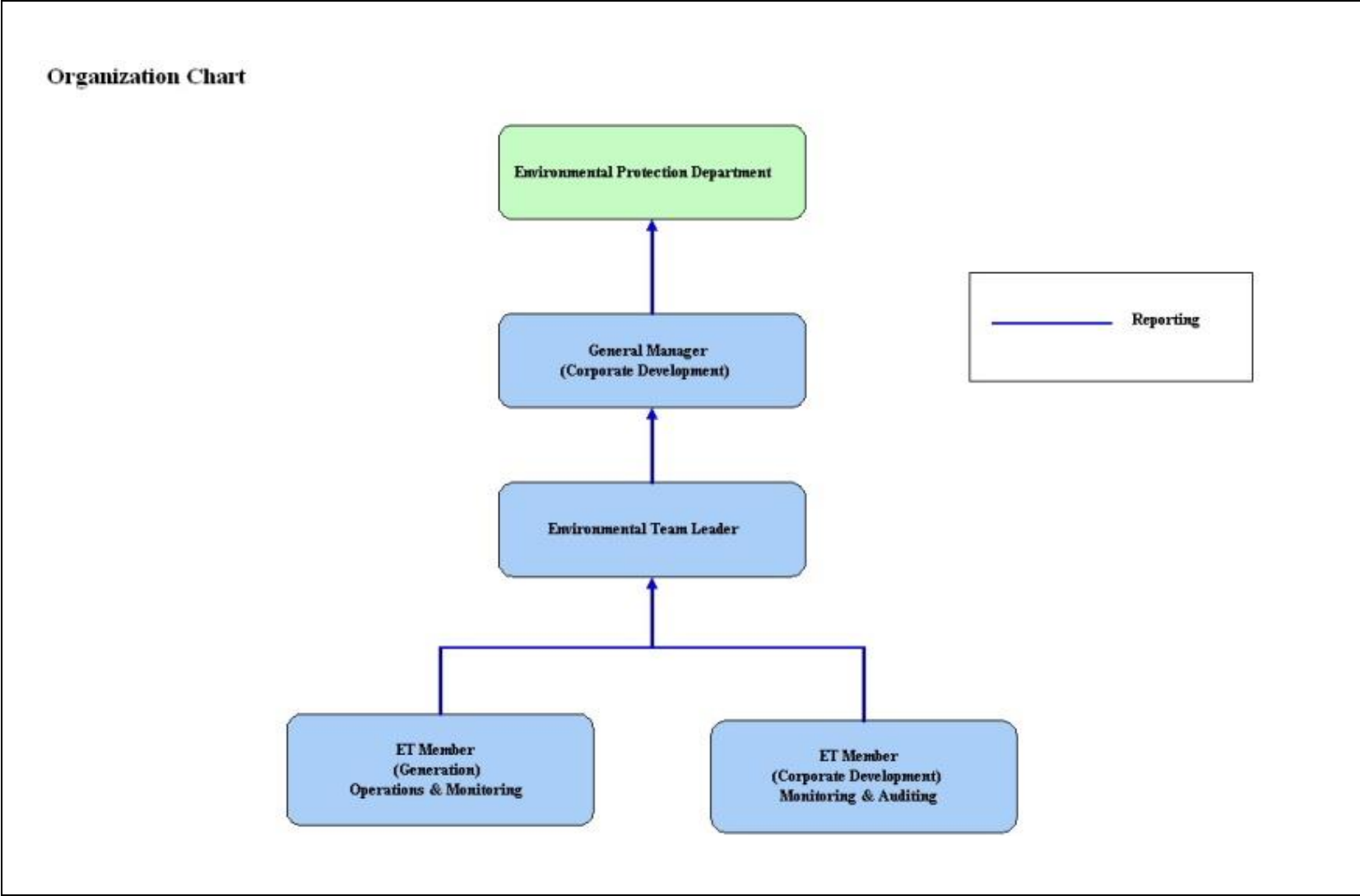


Figure 1.5 Organization Structure at Operational Phase of the Projects

2. AIR QUALITY

2.1 Monitoring Requirements

Since the Projects will bring a general air quality improvement, no additional EM&A activities are considered required, besides those already in place, such as those required by specified process licenses for the operation of the existing Lamma Power Station. Total Suspended Particulate (TSP) monitoring at East Gate and Reservoir area of Lamma Power Station is no longer required under the current SP Licence L-7-002(14). It is agreed with EPD that the results of continuous Respirable Suspended Particulate (RSP) monitoring at Lamma Power Station would be reported. In accordance with the requirements stipulated in the Specified Processes Licence issued under Air Pollution Control Ordinance, various operation parameters as stated in [Table 2.1](#) were monitored. Those parameters have to be checked against the Action/Limit Levels are shown in [Appendix A](#).

Table 2.1 Air Quality Monitoring Parameters and Frequency

Sources of Emission	Parameter	Frequency
Steam boilers L2, L4 & L5	Particulate	Once / year
	Particulate (Opacity)	Continuous
	SO ₂	Continuous
	NO _x expressed as NO ₂ (For L4 and L5 only)	Continuous
Fugitive Dust (Coal, PFA, Limestone, gypsum)	Respirable Suspended Particulate	Continuous
Chimney emissions	Ambient air	Continuous at existing ambient air monitoring stations
	SO ₂	
	NO ₂	

2.2 Summary of Results and Observations

Monitoring of various parameters as listed in [Table 2.1](#) above was conducted during the operation of Units L2, L4 and L5 in the reporting period. A summary of monitoring data is shown in [Appendix B](#).

No Action/Limit Level exceedance was recorded in the reporting period.

3. WATER QUALITY

3.1 Monitoring Requirements

According to the EIA Report/ Project Profile for the Projects, the current monitoring programme for the Lamma Power Station can cover the Projects and no additional EM&A measures are required besides those already in place. Hence, the EM&A work on water quality should strictly follow the relevant monitoring requirements stipulated in the discharge licence for Ash Lagoon issued under the Water Pollution Control Ordinance (WPCO).

Water quality monitoring was carried out for FGD Waste Water Treatment Plant (WWTP) in the reporting period. The parameters stated in [Table 3.1](#) were monitored and checked against the Action/Limit Levels as given in [Appendix A](#).

Table 3.1 Water Quality Monitoring Parameters and Frequencies

Item	Parameters	Frequencies
1	pH	Daily
2	Suspended Solids	Daily
3	Iron	Monthly
4	Barium	Monthly
5	Mercury	Monthly
6	Cadmium	Monthly
7	Cyanide	Monthly
8	Total Phosphorus	Monthly
9	Total Nitrogen	Monthly

3.2 Summary of Results and Observations

Monitoring of various parameters as listed in [Table 3.1](#) above was carried out during the discharge of the WWTP in the reporting period. A summary of the data is shown in [Appendix C](#).

The data recorded for the monitoring parameters were all below their corresponding Action/Limit Levels. No Action/Limit level exceedance was recorded in the reporting period. The effluent quality was generally satisfactory.

4. ENVIRONMENTAL AUDIT

4.1 Review of Environmental Monitoring Procedures

The environmental monitoring procedures were regularly reviewed by the Environmental Team. No modification to the existing monitoring procedures was recommended.

4.2 Assessment of Environmental Monitoring Results

Monitoring results for Air Quality and Water Quality

The environmental monitoring results for air quality and water quality are presented in [Sections 2 and 3](#) respectively are summarized in [Table 4.1](#).

Table 4.1 Summary of Action/Limit Level Exceedances on Monitoring Parameters

Item	Parameter Monitored	Monitoring Period	No. of Exceedances In		Event/Action Plan Implementation Status and Results
			Action Level	Limit Level	
Air					
1	Annual analysis of dust particulate emission rates at chimney stacks.	01/10/24-31/12/24	N.A.	0	No PM stack sampling tests were conducted in the reporting period.
2	Continuous monitoring of opacity, NOx, SO2 and CO2 in the flue gas at the chimney stacks	01/10/24-31/12/24	0	0	
3	Ambient SO2 & NOx monitoring at the Peak, Queen Mary Hospital, Victoria Road, Chung Hom Kok, Ap Lei Chau and Cheung Chau.	01/10/24-31/12/24	0	0	
Water					
1	pH in WWTP Effluent	01/10/24-31/12/24	0	0	
2	Suspended Solids in WWTP Effluent	01/10/24-31/12/24	0	0	

Item	Parameter Monitored	Monitoring Period	No. of Exceedances In		Event/Action Plan Implementation Status and Results
			Action Level	Limit Level	
3	Iron in WWTP Effluent	01/10/24-31/12/24	0	0	
4	Barium in WWTP Effluent	01/10/24-31/12/24	0	0	
5	Mercury in WWTP Effluent	01/10/24-31/12/24	0	0	
6	Cadmium in WWTP Effluent	01/10/24-31/12/24	0	0	
7	Cyanide in WWTP Effluent	01/10/24-31/12/24	0	0	
8	Total Phosphorus in WWTP Effluent	01/10/24-31/12/24	0	0	
9	Total Nitrogen in WWTP Effluent	01/10/24-31/12/24	0	0	

Waste Management Records

The quantity of FGD gypsum and sludge collected for reuse by contractor in the reporting period are shown in [Table 4.2](#).

Table 4.2 Amount of Gypsum and Sludge Collected for Reuse by Contractor

Period	Amount of Gypsum Collected	Amount of Sludge Collected
October 2024	2,050.40 MT	48.42 MT
November 2024	2,073.10 MT	0 MT
December 2024	2,071.76 MT	23.39 MT

4.3 Status of Environmental Licensing and Permitting

All permits/licenses obtained as of December 2024 are summarised in [Table 4.3](#).

Table 4.3 Summary of Environmental Licensing and Permit Status

Description	Permit / Licence No.	Valid Period		Status
		From	To	
Environmental Permit for Units L4/5 FGD Plants Retrofit	EP-248/2006	25/04/2006	-	Valid
Environmental Permit for Unit L2 FGD Plant Retrofit	EP-287/2007	02/10/2007	-	Valid
Specified Process Licence issued under APCO	L-7-002(14)	01/01/2023	31/12/2024	Valid
WPCO discharge licence for Ash Lagoon	WT00039618-2021	11/02/2022	31/12/2026	Valid

4.4 Implementation Status of Environmental Mitigation Measures

Mitigation measures detailed in the EIA Report and EP are required to be implemented. A summary of the Environmental Mitigation Implementation Schedule (EMIS) is presented in [Appendix D](#).

4.5 Implementation Status of Event/Action Plan

A list of specific actions in the event of exceedances of the various threshold levels for specific emission and discharge sources is given in [Appendix A](#).

As no Action/Limit level exceedance was recorded, no action has been devised.

4.6 Implementation Status of Environmental Complaint Handling Procedures

During the reporting period, there was no environmental complaint or feedback case regarding the operation of Lamma Power Station.

Table 4.4 Environmental Complaint(s) / Feedback Cases(s) Received

Case Reference / Date, Time Received / Date, Time Concerned	Descriptions / Actions Taken	Conclusion / Status
-	-	-

Table 4.5 Outstanding Environmental Complaint(s) / Feedback Case(s) Carried Over

Case Reference / Date, Time Received / Date, Time Concerned	Descriptions / Actions Taken	Conclusion / Status
-	-	-

5. FUTURE KEY ISSUES

5.1 Outage Plan for the coming 3 months

No major outage planned in the coming 3 months

5.2 Key issues for the coming 3 months

Key issues to be considered in the coming 3 months include:

Air Impact

- To continuously carry out the air quality monitoring for Units L2, L4 and L5 (if emergency generation is required).

Water Impact

- To continuously carry out the water quality monitoring for FGD Waste Water Treatment Plant.

6. CONCLUSION

Environmental monitoring was performed as required in the reporting period from October to December 2024. All monitoring results were checked and reviewed.

No Action/Limit level exceedance on air quality parameters were recorded in the reporting period.

No Action/Limit level exceedance on water quality parameters were recorded in the reporting period.

Environmental mitigation measures recommended in the EIA Report and EP were implemented in the reporting period.

During the reporting period, there was no environmental complaint or feedback case regarding the operation of Lamma Power Station.

No prosecution was received for the Projects in the reporting period.

The environmental performance of the Projects was generally satisfactory.

Appendix A Event/Action Plans in Response to Exceedance of AL Levels

A.1 Air

Source of Emissions	Parameters to be Monitored	Frequency	Concentration Not to Be Exceeded	Action	Limit	Proposed Action
Steam boilers L2, L4 and L5	Particulate	once/year	50 mg/Nm3	-	50	ET Leader informs Generation Division at action level. Maintenance initiated. Temporary load shift until pollution control equipment repaired and reinstated. Report to EPD.
	Particulate (Opacity)	continuous	40% (bihourly)	35	40	
	SO2	continuous	200 mg/Nm3 (1h)	190	200	
	NOx expressed as NO2 (For L4 and L5 only)	continuous	615 mg/Nm3 (1h)	585	615	
Chimney emissions	Ambient air SO2	Continuous at existing ambient air monitoring stations	800 (µg/m3) (1h)	-	800	ET to review data on post-hoc basis and check for possible power station contribution.
	NO2		300 (µg/m3) (1h)	-	300	

A.2 Water

Source of Discharges	Parameters to be Monitored	Frequency	Concentration Not to Be Exceeded	Action	Limit	Proposed Action
FGD Wastewater Treatment Plant	pH	Daily	6-9	-	6-9	If pH exceeds limit level, consideration to be given to adjust chemical dosing. ET Leader inform Generation Division and investigation be initiated to identify and remedy cause. For all other parameters except pH, Generation Division to be informed, frequency of monitoring to be increased, and investigations to be initiated to identify cause and remedy if concentration exceeds action level. If problem persists to exceed the limit level, ET Leader verbally informs EPD and ensures remedial actions implemented.
	Suspended Solids	Daily	30 mg/L	25	30	
	Iron	Monthly	4 mg/L	3.6	4	
	Barium	Monthly	1.5 mg/L	1.3	1.5	
	Mercury	Monthly	0.005 mg/L	0.0045	0.005	
	Cadmium	Monthly	0.005 mg/L	0.0045	0.005	
	Cyanide	Monthly	0.1 mg/L	0.09	0.1	
	Total Phosphorus	Monthly	8 mg/L	7.2	8	
	Total Nitrogen	Monthly	400 mg/L	360	400	

Appendix B

Air Quality Monitoring Results

B.1 Ambient Respirable Suspended Particulate Monitoring at Lamma Power Station

Date: Fourth Quarter of 2024 (October – December)

Date	RSP concentration ($\mu\text{g}/\text{m}^3$)	
	Reservoir	East Gate
01/10/2023	16	19
02/10/2023	18	15
03/10/2023	21	20
04/10/2023	27	29
05/10/2023	14	12
06/10/2023	15	13
07/10/2023	9	6
08/10/2023	11	8
09/10/2023	8	9
10/10/2023	8	6
11/10/2023	15	7
12/10/2023	16	9
13/10/2023	14	8
14/10/2023	17	9
15/10/2023	22	11
16/10/2023	28	10
17/10/2023	24	10
18/10/2023	26	22
19/10/2023	23	39
20/10/2023	18	30
21/10/2023	12	33
22/10/2023	14	43
23/10/2023	14	36
24/10/2023	10	30
25/10/2023	11	25
26/10/2023	13	18
27/10/2023	17	15
28/10/2023	20	18
29/10/2023	17	14
30/10/2023	23	19
31/10/2023	17	13

Date	RSP concentration ($\mu\text{g}/\text{m}^3$)	
	Reservoir	East Gate
01/11/2023	15	11
02/11/2023	18	11
03/11/2023	21	12
04/11/2023	18	9
05/11/2023	16	7
06/11/2023	22	8
07/11/2023	24	29
08/11/2023	18	44
09/11/2023	16	42
10/11/2023	12	33
11/11/2023	8	25
12/11/2023	6	22
13/11/2023	9	24
14/11/2023	15	37
15/11/2023	17	31
16/11/2023	27	52
17/11/2023	32	84
18/11/2023	35	71
19/11/2023	29	68
20/11/2023	30	60
21/11/2023	18	32
22/11/2023	16	29
23/11/2023	21	34
24/11/2023	31	61
25/11/2023	26	60
26/11/2023	21	42
27/11/2023	27	46
28/11/2023	28	50
29/11/2023	30	58
30/11/2023	26	48

Date	RSP concentration ($\mu\text{g}/\text{m}^3$)	
	Reservoir	East Gate
01/12/2023	27	45
02/12/2023	28	46
03/12/2023	26	43
04/12/2023	29	48
05/12/2023	36	59
06/12/2023	27	36
07/12/2023	14	26
08/12/2023	25	44
09/12/2023	23	46
10/12/2023	17	29
11/12/2023	8	16
12/12/2023	10	35
13/12/2023	8	27
14/12/2023	16	30
15/12/2023	12	20
16/12/2023	12	39
17/12/2023	14	22
18/12/2023	15	25
19/12/2023	23	39
20/12/2023	16	31
21/12/2023	19	36
22/12/2023	29	56
23/12/2023	24	49
24/12/2023	23	47
25/12/2023	20	37
26/12/2023	26	58
27/12/2023	21	41
28/12/2023	23	42
29/12/2023	18	35
30/12/2023	22	40
31/12/2023	36	66

B.2 Unit L2, L4 and L5 Stack Monitoring at Lamma Power Station

B.2.1 Monthly Summary of Stack NOx and SO2 for Unit L5

Date	Daily Maximum		
	SO2 concentration (mg/Nm3) [#]	NOx concentration (mg/Nm3) [#]	Opacity (%)
01/10/2024	*	*	*
02/10/2024	*	*	*
03/10/2024	*	*	*
04/10/2024	*	*	*
05/10/2024	*	*	*
06/10/2024	*	*	*
07/10/2024	*	*	*
08/10/2024	*	*	*
09/10/2024	*	*	*
10/10/2024	*	*	*
11/10/2024	*	*	*
12/10/2024	*	*	*
13/10/2024	*	*	*
14/10/2024	*	*	*
15/10/2024	*	*	*
16/10/2024	*	*	*
17/10/2024	*	*	*
18/10/2024	*	*	*
19/10/2024	*	*	*
20/10/2024	*	*	*
21/10/2024	*	*	*
22/10/2024	*	*	*
23/10/2024	*	*	*
24/10/2024	*	*	*
25/10/2024	*	*	*
26/10/2024 [^]	*	258	12
27/10/2024	*	*	*
28/10/2024	*	*	*
29/10/2024	*	*	*
30/10/2024	*	*	*
31/10/2024	*	*	*

Date	Daily Maximum		
	SO2 concentration (mg/Nm3) [#]	NOx concentration (mg/Nm3) [#]	Opacity (%)
01/11/2024	*	*	*
02/11/2024	*	*	*
03/11/2024	*	*	*
04/11/2024	*	*	*
05/11/2024	*	*	*
06/11/2024	*	*	*
07/11/2024	*	*	*
08/11/2024	*	*	*
09/11/2024	*	*	*
10/11/2024	*	*	*
11/11/2024	*	*	*
12/11/2024	*	*	*
13/11/2024	*	*	*
14/11/2024	*	*	*
15/11/2024	*	*	*
16/11/2024	*	*	*
17/11/2024	*	*	*
18/11/2024	*	*	*
19/11/2024	*	*	*
20/11/2024	*	*	*
21/11/2024	*	*	*
22/11/2024	*	*	*
23/11/2024	*	*	*
24/11/2024	*	*	*
25/11/2024	*	*	*
26/11/2024	*	*	*
27/11/2024	*	*	*
28/11/2024	*	*	*
29/11/2024	*	*	*
30/11/2024	*	*	*

	Daily Maximum		
	SO2 concentration (mg/Nm3) [#]	NOx concentration (mg/Nm3) [#]	Opacity (%)
01/12/2024	*	*	*
02/12/2024	*	*	*
03/12/2024	*	*	*
04/12/2024	*	*	*
05/12/2024	*	*	*
06/12/2024	*	*	*
07/12/2024	*	*	*
08/12/2024	*	*	*
09/12/2024	*	*	*
10/12/2024	*	*	*
11/12/2024	*	*	*
12/12/2024	*	*	*
13/12/2024	*	*	*
14/12/2024	*	*	*
15/12/2024	*	*	*
16/12/2024	*	*	*
17/12/2024	*	*	*
18/12/2024	*	*	*
19/12/2024	*	*	*
20/12/2024	*	*	*
21/12/2024	*	*	*
22/12/2024	*	*	*
23/12/2024	*	*	*
24/12/2024	*	*	*
25/12/2024	*	*	*
26/12/2024	*	*	*
27/12/2024	*	*	*
28/12/2024	*	*	*
29/12/2024	*	*	*
30/12/2024	*	*	*
31/12/2024	*	*	*

Note: # - Hourly average value. Expressed as at 0°C, 101.325kPa, dry and corrected to 12% CO₂ condition.

* - Unit L5 was not on load

^ - Proof-run of L5 was conducted

B.2.2 Monthly Summary of Stack NOx and SO2 for Unit L4

Date	Daily Maximum		
	SO2 concentration (mg/Nm3) #	NOx concentration (mg/Nm3) #	Opacity (%)
01/10/2024	*	*	*
02/10/2024	*	*	*
03/10/2024	*	*	*
04/10/2024	*	*	*
05/10/2024	*	*	*
06/10/2024	*	*	*
07/10/2024	*	*	*
08/10/2024	*	*	*
09/10/2024	*	*	*
10/10/2024	*	*	*
11/10/2024	*	*	*
12/10/2024	*	*	*
13/10/2024	*	*	*
14/10/2024	*	*	*
15/10/2024	*	*	*
16/10/2024	*	*	*
17/10/2024	*	*	*
18/10/2024	*	*	*
19/10/2024	*	*	*
20/10/2024	*	*	*
21/10/2024	*	*	*
22/10/2024	*	*	*
23/10/2024	*	*	*
24/10/2024	*	*	*
25/10/2024	*	*	*
26/10/2024	*	*	*
27/10/2024	*	*	*
28/10/2024	*	*	*
29/10/2024	*	*	*
30/10/2024	*	*	*
31/10/2024	*	*	*

Date	Daily Maximum		
	SO2 concentration (mg/Nm3) [#]	NOx concentration (mg/Nm3) [#]	Opacity (%)
01/11/2024	*	*	*
02/11/2024	*	*	*
03/11/2024	*	*	*
04/11/2024	*	*	*
05/11/2024	*	*	*
06/11/2024	*	*	*
07/11/2024	*	*	*
08/11/2024	*	*	*
09/11/2024	*	*	*
10/11/2024	*	*	*
11/11/2024	*	*	*
12/11/2024	*	*	*
13/11/2024	*	*	*
14/11/2024	*	*	*
15/11/2024	*	*	*
16/11/2024	*	*	*
17/11/2024	*	*	*
18/11/2024	*	*	*
19/11/2024	*	*	*
20/11/2024	*	*	*
21/11/2024	*	*	*
22/11/2024	*	*	*
23/11/2024	*	*	*
24/11/2024	*	*	*
25/11/2024	*	*	*
26/11/2024	*	*	*
27/11/2024	*	*	*
28/11/2024	*	*	*
29/11/2024	*	*	*
30/11/2024	*	*	*

Date	Daily Maximum		
	SO2 concentration (mg/Nm3) [#]	NOx concentration (mg/Nm3) [#]	Opacity (%)
01/12/2024	*	*	*
02/12/2024	*	*	*
03/12/2024	*	*	*
04/12/2024	*	*	*
05/12/2024	*	*	*
06/12/2024	*	*	*
07/12/2024	*	*	*
08/12/2024	*	*	*
09/12/2024	*	*	*
10/12/2024	*	*	*
11/12/2024	*	*	*
12/12/2024	*	*	*
13/12/2024	*	*	*
14/12/2024	*	*	*
15/12/2024	*	*	*
16/12/2024	*	*	*
17/12/2024	*	*	*
18/12/2024	*	*	*
19/12/2024	*	*	*
20/12/2024	*	*	*
21/12/2024	*	*	*
22/12/2024	*	*	*
23/12/2024	*	*	*
24/12/2024	*	*	*
25/12/2024	*	*	*
26/12/2024	*	*	*
27/12/2024	*	*	*
28/12/2024	*	*	*
29/12/2024	*	*	*
30/12/2024	*	*	*
31/12/2024	*	*	*

Note: # - Hourly average value. Expressed as at 0°C, 101.325kPa, dry and corrected to 12% CO₂ condition.

* - Unit L4 was not on load.

B.2.3 Monthly Summary of Stack SO2 for Unit L2

Date	Daily Maximum	
	SO2 concentration (mg/Nm3) [#]	Opacity (%)
01/10/2024	*	*
02/10/2024	*	*
03/10/2024	*	*
04/10/2024	*	*
05/10/2024	*	*
06/10/2024	*	*
07/10/2024	*	*
08/10/2024	*	*
09/10/2024	*	*
10/10/2024	*	*
11/10/2024	*	*
12/10/2024	*	*
13/10/2024	*	*
14/10/2024	*	*
15/10/2024	*	*
16/10/2024	*	*
17/10/2024	*	*
18/10/2024	*	*
19/10/2024	*	*
20/10/2024	*	*
21/10/2024	*	*
22/10/2024	*	*
23/10/2024	*	*
24/10/2024	*	*
25/10/2024	*	*
26/10/2024	*	*
27/10/2024	*	*
28/10/2024	*	*
29/10/2024	*	*
30/10/2024	*	*
31/10/2024	*	*

Date	Daily Maximum	
	SO2 concentration (mg/Nm3) [#]	Opacity (%)
01/11/2024	*	*
02/11/2024	*	*
03/11/2024	*	*
04/11/2024	*	*
05/11/2024	*	*
06/11/2024	*	*
07/11/2024	*	*
08/11/2024	*	*
09/11/2024	*	*
10/11/2024	*	*
11/11/2024	*	*
12/11/2024	*	*
13/11/2024	*	*
14/11/2024	*	*
15/11/2024	*	*
16/11/2024	*	*
17/11/2024	*	*
18/11/2024	*	*
19/11/2024	*	*
20/11/2024	*	*
21/11/2024	*	*
22/11/2024	*	*
23/11/2024	*	*
24/11/2024	*	*
25/11/2024	*	*
26/11/2024	*	*
27/11/2024	*	*
28/11/2024	*	*
29/11/2024	*	*
30/11/2024	*	*

Date	Daily Maximum	
	SO2 concentration (mg/Nm3) [#]	Opacity (%)
01/12/2024	*	*
02/12/2024	*	*
03/12/2024	*	*
04/12/2024	*	*
05/12/2024	*	*
06/12/2024	*	*
07/12/2024	*	*
08/12/2024	*	*
09/12/2024	*	*
10/12/2024	*	*
11/12/2024	*	*
12/12/2024	*	*
13/12/2024	*	*
14/12/2024	*	*
15/12/2024	*	*
16/12/2024	*	*
17/12/2024	*	*
18/12/2024	*	*
19/12/2024	*	*
20/12/2024	*	*
21/12/2024	*	*
22/12/2024	*	*
23/12/2024	*	*
24/12/2024	*	*
25/12/2024	*	*
26/12/2024	*	*
27/12/2024	*	*
28/12/2024	*	*
29/12/2024	*	*
30/12/2024	*	*
31/12/2024	*	*

Note: # - Hourly average value. Expressed as at 0°C, 101.325kPa, dry and corrected to 12% CO₂ condition.

* - Unit L2 was not on load.

B.2.4 Summary of Annual Stack Particulate Sampling

No stack particulate sampling was conducted for Unit L5 in the period October to December 2024. Unit L2, Unit L4 and Unit L5 were retired in October 2022, January 2024 and June 2024 respectively.

B.3 Ambient SO₂ and NO₂ monitoring Data at Southern District and Cheung Chau

THE HONGKONG ELECTRIC COMPANY, LTD.
AIR QUALITY DATA MONTHLY TIME SERIES REPORT
MONTH: OCTOBER

STATION : VICTORIA PEAK
POLLUTANT : SULPHUR DIOXIDE

YEAR : 2024
UNIT : MICROGRAMS/CUBIC METER

DAY	1	2	3	4	5	6	7	8	9	10	11	12	13	14	15	16	17	18	19	20	21	22	23	24	MEAN		
1	7	7	7	7	7	7	7	7	7	7	8	8	8	10	10	9	8	8	7	8	8	8	8	8	6	8	
2	6	6	6	6	6	6	6	5	6	6	6	6	7	7	8	8	8	8	7	6	6	6	6	6	5	6	
3	5	5	5	5	5	5	5	5	5	6	6	6	6	6	7	8	9	8	6	6	6	6	6	6	5	6	
4	5	5	6	5	6	6	6	6	6	6	6	6	7	7	8	10	10	9	7	7	7	7	6	6	7		
5	6	6	6	6	6	6	6	6	6	7	7	7	8	8	8	10	10	8	8	8	8	8	8	8	6	7	
6	6	7	7	7	7	7	7	7	8	8	8	8	9	9	11	11	12	11	9	8	8	8	8	8	7	8	
7	7	7	7	7	7	7	7	7	8	7	8	9	9	10	11	13	14	12	9	8	8	8	8	8	7	9	
8	7	7	7	7	7	7	7	7	7	7	7	8	8	9	10	11	9	9	8	8	8	8	8	8	7	8	
9	7	7	7	7	7	7	8	7	8	8	8	8	8	8	8	8	8	8	8	8	8	8	8	7	7	8	
10	7	7	7	7	7	7	7	7	7	7	7	8	8	8	8	9	9	8	8	8	8	8	8	8	7	8	
11	7	7	7	8	8	7	7	7	8	8	8	8	8	8	8	8	8	8	8	8	8	8	8	8	7	8	
12	7	7	7	7	7	7	7	7	7	7	7	7	8	8	9	10	11	9	8	8	8	8	8	8	8	8	8
13	8	8	8	8	8	8	8	8	8	8	8	9	9	9	10	11	12	11	9	9	9	9	9	9	8	9	
14	8	8	8	8	8	8	8	8	9	9	9	9	9	10	11	12	12	11	9	9	9	9	9	9	8	9	
15	8	8	8	8	8	8	8	9	9	9	9	9	10	10	11	11	11	10	9	9	9	9	9	9	8	9	
16	8	8	8	8	8	8	8	8	9	9	9	9	9	9	9	9	9	9	9	9	9	9	9	9	8	9	
17	8	8	8	8	8	8	8	8	8	9	9	9	9	9	9	10	10	9	9	9	9	9	9	13	9	9	
18	9	9	9	9	9	9	9	9	9	9	10	9	10	10	11	10	11	10	9	9	9	9	9	9	9	9	
19	9	9	9	9	9	9	8	9	9	10	9	10	10	10	12	13	15	14	10	10	10	10	23	10	11		
20	9	9	9	9	9	9	9	9	9	9	9	9	10	10	10	11	10	10	9	9	9	10	13	9	10		
21	9	9	9	9	9	9	9	9	9	9	10	10	10	11	11	11	11	10	10	10	10	10	10	9	10		
22	8	9	9	9	9	9	9	9	9	9	10	10	10	10	12	14	15	12	10	10	9	9	9	8	10		
23	8	8	8	8	8	8	8	8	8	8	M	3	3	2	2	2	2	1	1	1	1	1	1	1	4		
24	1	1	1	1	1	1	0	1	0	1	0	1	0	1	1	1	0	0	0	0	0	0	0	0	1		
25	0	0	0	0	0	0	0	0	0	0	0	M	0	0	1	1	1	0	0	0	0	0	0	0	0		
26	0	0	0	0	0	0	0	0	0	0	0	0	0	0	0	0	0	0	0	0	0	0	0	0	0		
27	0	0	0	0	0	0	0	0	0	0	0	0	0	0	0	0	0	0	0	0	0	0	0	0	0		
28	0	0	0	0	0	0	0	0	0	0	0	0	0	0	0	0	0	0	0	0	0	0	0	0	0		
29	0	0	0	0	0	0	0	0	0	0	0	0	0	0	0	0	0	0	0	0	0	0	0	0	0		
30	0	0	0	0	0	0	0	0	0	0	0	0	0	0	0	0	0	0	0	0	0	0	0	0	0		
31	0	0	0	0	0	0	0	0	0	0	0	0	0	0	0	0	0	0	0	0	0	0	0	0	0		

MONTHLY STATISTICS:

GEOM	ARITH-----PERCENTILES-----							-----RANGE-----					STN GEOM	PERCENT	NO. OF TIMES	
MEAN	MEDIAN	MEAN	50	90	95	98	99	1-HR		24-HR			DEVIATION	VALID DATA	ABOVE LIMIT LEVEL	
7	8	6	8	10	11	12	13	0	-	23	0	-	11	2	100	0

- NOTES: 1. FLAGS FOR INVALID DATA :
- D: DYNAMIC CALIBRATION
 - T: TELEMETRY/DATALOGGR FAULT
 - M: MAINTENANCE OR ANALYZER FAULT
 - P: POWER FAILURE

THE HONGKONG ELECTRIC COMPANY, LTD.
AIR QUALITY DATA MONTHLY TIME SERIES REPORT
MONTH: OCTOBER

STATION : VICTORIA PEAK
POLLUTANT : NITROGEN DIOXIDE

YEAR : 2024
UNIT : MICROGRAMS/CUBIC METER

DAY	1	2	3	4	5	6	7	8	9	10	11	12	13	14	15	16	17	18	19	20	21	22	23	24	MEAN
1	26	15	11	8	6	6	9	8	9	10	9	9	9	11	8	13	17	22	13	11	8	10	11	11	11
2	9	9	6	6	7	5	6	9	10	11	11	11	11	13	13	18	22	24	28	23	17	11	12	12	13
3	10	8	5	4	4	5	8	14	19	21	19	19	16	17	25	32	30	44	46	36	30	23	23	12	20
4	13	12	9	7	7	9	17	30	43	40	39	31	27	24	22	24	29	56	38	36	29	32	25	16	26
5	14	10	10	13	8	8	13	22	23	25	28	23	21	20	23	19	25	44	50	42	35	20	17	13	22
6	12	10	8	8	9	8	10	14	13	12	12	10	16	23	9	12	17	20	39	31	41	61	76	64	22
7	43	16	8	7	8	7	10	18	23	29	30	27	19	20	16	16	19	27	33	19	53	56	60	30	25
8	18	13	9	7	10	10	14	22	25	28	21	19	21	21	16	18	23	16	8	7	6	5	7	10	15
9	9	M	9	M	6	9	18	20	26	34	25	26	26	23	35	29	29	28	25	26	23	14	12	13	21
10	12	12	12	12	11	8	14	23	22	29	32	34	38	18	14	8	10	9	8	6	9	8	14	9	16
11	7	3	3	2	4	4	5	8	11	9	5	7	11	10	9	9	7	11	9	6	5	4	4	4	7
12	3	4	4	4	5	5	7	8	9	15	12	21	13	16	15	18	17	15	14	9	4	4	4	4	10
13	4	4	3	4	4	5	5	8	9	9	5	6	7	7	5	4	8	18	11	9	8	6	7	3	7
14	3	4	3	3	3	5	4	4	10	14	6	5	4	11	10	13	9	9	6	4	2	2	4	6	6
15	5	3	2	2	3	3	5	7	11	11	8	8	11	11	12	16	17	17	8	2	5	8	10	7	8
16	6	4	3	2	4	3	6	10	13	10	10	7	7	6	6	6	5	6	4	2	3	3	2	3	5
17	2	1	1	1	1	1	5	4	5	6	4	4	3	6	8	8	7	9	8	5	4	7	7	4	5
18	4	3	2	2	1	1	3	3	5	6	5	4	4	6	7	9	12	18	6	11	14	6	26	14	7
19	10	7	6	5	3	2	6	15	36	39	36	58	45	32	28	16	12	13	13	9	6	5	8	5	17
20	3	2	2	2	1	2	2	3	4	4	4	4	3	3	4	4	6	9	11	10	6	5	7	5	4
21	5	8	3	3	3	4	7	11	17	22	19	16	13	18	22	30	33	18	11	10	8	7	8	10	13
22	8	5	4	5	5	7	10	14	28	28	22	15	17	16	18	25	32	41	31	20	15	15	16	16	17
23	12	M	9	8	6	5	6	11	15	17	M	17	15	12	14	13	17	21	16	17	15	15	20	15	13
24	18	10	6	5	6	5	12	19	25	20	20	21	20	16	17	23	24	29	23	25	19	17	28	25	18
25	18	19	15	12	7	8	11	18	24	26	27	M	20	17	19	25	26	41	35	26	18	18	19	15	20
26	13	10	8	8	6	7	14	13	12	14	16	16	11	13	19	20	20	27	19	16	13	10	11	7	13
27	6	7	7	8	6	5	5	5	5	7	6	8	7	6	7	7	8	25	25	21	24	29	20	17	11
28	15	11	11	12	9	9	11	17	22	19	18	21	26	22	32	30	24	34	29	24	23	16	19	23	20
29	13	15	16	12	7	5	9	14	18	18	11	15	15	18	22	19	29	46	41	39	38	25	20	18	20
30	16	14	14	12	10	8	14	16	23	23	16	15	22	23	20	21	28	38	54	42	21	30	29	16	22
31	16	18	11	8	7	7	7	12	18	16	16	25	18	16	17	21	22	24	21	21	18	17	19	18	16

MONTHLY STATISTICS:

GEOM	ARITH-----PERCENTILES-----										RANGE-----		STN GEOM	PERCENT	NO. OF TIMES	
MEAN	MEDIAN	MEAN	50	90	95	98	99	1-HR	24-HR	DEVIATION	VALID DATA	ABOVE	LIMIT	LEVEL		
11	12	14	12	28	35	43	54	1	-	76	4	-	26	2	99	0

- NOTES: 1. FLAGS FOR INVALID DATA :
- D: DYNAMIC CALIBRATION
 - T: TELEMETRY/DATALOGGR FAULT
 - M: MAINTENANCE OR ANALYZER FAULT
 - P: POWER FAILURE

THE HONGKONG ELECTRIC COMPANY, LTD.
AIR QUALITY DATA MONTHLY TIME SERIES REPORT

STATION : CHUNG HOM KOK ZONE SUBSTATION
POLLUTANT : SULPHUR DIOXIDE

MONTH:OCTOBER

YEAR :2024

UNIT :MICROGRAMS/CUBIC METER

DAY	1	2	3	4	5	6	7	8	9	10	11	12	13	14	15	16	17	18	19	20	21	22	23	24	MEAN	
1	19	16	16	15	14	14	14	14	13	12	10	8	4	0	0	3	9	12	15	16	16	16	16	16	18	12
2	19	19	19	21	22	22	23	21	19	17	15	12	9	1	0	3	7	10	17	19	19	19	20	20	16	
3	20	20	21	20	20	20	20	18	17	16	14	10	5	1	0	0	M	8	14	16	16	16	16	15	14	
4	16	16	16	16	16	16	16	15	13	9	6	5	4	0	0	0	0	5	14	16	16	16	16	16	11	
5	16	16	16	17	17	18	18	17	16	13	11	11	8	1	0	0	1	13	18	20	20	20	20	20	14	
6	21	21	22	21	22	23	24	23	23	21	18	16	10	3	1	2	5	11	22	26	27	27	27	28	19	
7	27	26	27	26	26	28	23	21	18	24	22	19	13	8	7	9	10	18	14	16	17	17	17	16	19	
8	17	17	18	19	18	19	19	19	17	15	14	14	24	16	13	14	17	12	19	20	21	21	21	20	18	
9	9	9	9	10	11	12	12	10	10	8	4	1	0	2	1	2	2	7	11	12	12	12	12	12	8	
10	22	22	22	22	22	22	22	20	18	17	17	13	10	3	1	1	5	16	23	24	24	23	23	26	17	
11	20	20	21	20	21	22	23	21	19	17	17	14	14	14	7	7	8	13	18	19	19	18	18	17	17	
12	18	18	18	18	18	19	19	18	17	16	15	13	10	3	1	0	2	9	20	21	21	21	21	20	15	
13	21	21	21	21	21	21	21	21	19	18	15	14	11	6	6	5	6	18	24	25	26	26	26	26	18	
14	26	27	27	27	27	27	27	25	23	21	20	18	15	11	7	6	9	16	27	30	30	30	30	31	22	
15	17	18	18	18	18	18	18	17	14	13	11	10	8	1	0	3	7	13	20	21	22	21	22	21	15	
16	22	22	21	21	20	21	21	20	17	15	14	13	11	7	10	13	16	17	19	20	20	20	20	19	17	
17	19	19	19	19	20	20	19	18	15	14	12	10	8	4	2	4	4	13	19	20	19	19	19	18	15	
18	20	20	20	20	21	21	21	19	17	16	13	12	9	7	4	2	7	19	25	27	28	28	28	29	18	
19	19	19	20	19	20	21	21	23	28	24	20	17	12	2	0	0	7	14	28	32	33	34	34	33	20	
20	15	16	16	17	17	18	18	18	17	15	15	13	10	8	9	10	8	16	25	27	28	27	28	28	17	
21	29	29	30	30	30	30	30	29	28	24	20	20	16	8	3	2	13	23	27	27	26	25	25	24	23	
22	25	25	25	25	25	25	26	25	23	20	16	13	10	2	0	2	5	14	20	21	22	22	23	23	18	
23	24	22	22	23	23	23	22	21	18	15	14	11	7	1	2	1	3	13	21	23	24	24	24	23	17	
24	23	22	21	21	22	24	24	21	18	17	13	11	8	2	0	M	7	0	0	1	2	2	3	8	12	
25	4	4	4	4	4	4	4	4	4	4	4	4	3	3	3	3	3	4	4	3	3	4	4	9	4	
26	5	4	4	4	4	3	4	3	4	3	3	3	3	3	3	3	3	3	2	3	3	3	3	8	4	
27	4	4	4	4	4	3	3	3	3	3	3	3	3	2	2	3	3	2	3	3	3	3	3	7	3	
28	4	3	3	3	3	3	3	2	2	2	2	3	3	3	3	3	3	3	3	3	3	3	3	8	3	
29	4	3	3	3	3	3	2	3	3	3	2	2	2	3	3	3	2	2	2	2	2	2	2	8	3	
30	3	3	3	3	3	3	3	3	3	3	3	3	3	3	3	4	3	4	4	5	5	4	4	9	4	
31	4	4	4	4	4	4	3	3	3	3	3	3	3	3	3	3	3	3	3	3	3	3	3	8	3	

MONTHLY STATISTICS:

GEOM	ARITH-----PERCENTILES-----							-----RANGE-----					STN GEOM	PERCENT	NO. OF TIMES	
MEAN	MEDIAN	MEAN	50	90	95	98	99	1-HR		24-HR			DEVIATION	VALID DATA	ABOVE LIMIT LEVEL	
10	15	13	15	24	27	29	30	0	-	34	3	-	23	2	100	0

- NOTES: 1. FLAGS FOR INVALID DATA :
- D: DYNAMIC CALIBRATION
 - T: TELEMETRY/DATALOGGR FAULT
 - M: MAINTENANCE OR ANALYZER FAULT
 - P: POWER FAILURE

THE HONGKONG ELECTRIC COMPANY, LTD.
AIR QUALITY DATA MONTHLY TIME SERIES REPORT

STATION : CHUNG HOM KOK ZONE SUBSTATION
POLLUTANT : NITROGEN DIOXIDE

MONTH:OCTOBER

YEAR :2024

UNIT :MICROGRAMS/CUBIC METER

DAY	1	2	3	4	5	6	7	8	9	10	11	12	13	14	15	16	17	18	19	20	21	22	23	24	MEAN
1	101	35	22	10	7	6	7	8	6	6	6	6	7	9	6	6	9	15	15	10	10	12	10	10	14
2	9	7	6	6	6	6	8	13	15	16	18	15	15	16	13	13	14	19	21	14	15	13	12	9	12
3	8	7	6	6	6	7	9	13	15	14	17	22	18	17	18	21	M	16	19	14	12	9	9	8	13
4	8	9	7	6	6	7	7	11	13	14	13	33	43	35	38	27	35	27	25	23	16	13	19	15	19
5	10	9	7	9	8	8	8	11	11	16	17	40	31	25	15	15	12	15	11	13	9	8	8	16	14
6	13	11	10	11	10	12	13	13	11	11	11	12	6	5	7	7	7	9	6	13	15	25	13	9	11
7	7	7	8	6	8	7	6	8	11	13	10	12	11	11	8	8	11	25	26	24	24	18	16	18	13
8	14	9	8	8	8	8	9	12	13	14	10	9	9	8	7	7	10	8	6	4	5	5	7	7	9
9	12	M	13	10	8	12	13	12	18	20	15	14	14	11	10	11	16	16	18	18	16	10	10	15	14
10	14	8	10	9	8	6	8	11	14	19	37	14	10	7	6	7	8	10	6	6	9	9	8	7	10
11	5	4	4	5	5	5	4	9	8	8	8	9	10	8	9	10	9	7	8	6	5	5	6	6	7
12	5	5	5	6	6	7	8	10	8	8	8	8	8	7	9	8	10	12	11	8	5	5	3	4	7
13	6	5	4	5	6	5	6	7	10	8	7	6	6	6	6	4	5	5	4	4	4	5	4	5	6
14	5	6	4	5	5	6	5	6	7	7	7	6	3	3	3	4	6	9	6	7	8	6	5	11	6
15	6	4	4	5	4	4	6	6	6	6	6	5	4	3	4	4	6	4	9	7	7	8	16	11	6
16	8	5	4	4	6	7	6	7	7	6	5	6	5	6	7	7	6	7	7	4	5	7	5	5	6
17	2	3	3	3	2	3	5	5	5	5	4	5	5	4	6	8	8	7	3	5	6	13	7	5	5
18	10	9	5	4	2	2	5	5	6	6	5	5	4	4	6	5	6	5	6	6	9	7	3	8	6
19	6	6	4	3	2	1	2	22	54	40	22	20	10	12	16	13	10	10	8	7	8	6	6	7	12
20	4	3	3	3	2	2	4	6	4	4	4	5	5	6	5	5	6	7	8	8	6	5	4	5	5
21	5	6	6	6	6	5	7	16	15	12	12	11	9	8	7	8	12	15	11	8	5	5	6	6	9
22	6	6	6	9	8	9	12	16	18	11	11	11	13	42	45	45	33	27	15	10	8	9	11	11	16
23	10	M	7	6	7	8	17	17	19	17	15	22	18	17	19	23	23	23	20	18	15	12	12	13	16
24	11	10	11	8	8	8	12	16	23	29	30	23	18	21	20	26	42	37	27	15	13	13	12	12	19
25	11	10	12	12	11	11	15	15	15	19	22	23	20	17	14	16	20	24	22	19	12	12	16	11	16
26	8	7	6	6	5	6	7	8	9	8	9	9	9	10	12	12	7	10	10	15	15	12	10	10	9
27	9	8	8	10	10	7	6	6	7	5	5	5	4	4	6	6	6	4	9	14	16	14	10	10	8
28	10	10	12	12	9	7	11	12	13	15	13	14	13	13	11	12	14	18	20	22	20	19	15	13	14
29	10	9	8	8	7	7	11	14	13	10	8	8	6	7	10	14	19	18	20	31	33	25	20	17	14
30	16	17	15	10	9	9	11	11	11	11	12	12	12	14	14	20	22	45	51	55	57	39	27	31	22
31	30	29	15	14	11	12	16	23	30	32	32	35	43	34	37	33	34	48	52	45	41	36	30	24	31

MONTHLY STATISTICS:

GEOM	ARITH-----PERCENTILES-----							-----RANGE-----					STN GEOM	PERCENT	NO. OF TIMES	
MEAN	MEDIAN	MEAN	50	90	95	98	99	1-HR	24-HR	DEVIATION	VALID DATA	ABOVE	LIMIT	LEVEL		
10	9	12	9	22	31	41	45	1	-	101	5	-	31	2	100	0

- NOTES: 1. FLAGS FOR INVALID DATA :
- D: DYNAMIC CALIBRATION
 - T: TELEMETRY/DATALOGGR FAULT
 - M: MAINTENANCE OR ANALYZER FAULT
 - P: POWER FAILURE

THE HONGKONG ELECTRIC COMPANY, LTD.
AIR QUALITY DATA MONTHLY TIME SERIES REPORT
MONTH: OCTOBER

STATION : VICTORIA ROAD SUBSTATION
POLLUTANT : SULPHUR DIOXIDE

YEAR : 2024
UNIT : MICROGRAMS/CUBIC METER

DAY	1	2	3	4	5	6	7	8	9	10	11	12	13	14	15	16	17	18	19	20	21	22	23	24	MEAN
1	12	12	12	12	12	12	11	12	12	12	12	12	12	12	12	12	12	11	12	11	12	11	11	11	12
2	12	12	12	12	12	12	11	12	12	12	11	12	11	12	11	12	12	12	10	11	12	11	12	11	12
3	12	12	11	12	11	12	12	12	12	12	12	12	12	12	11	12	12	12	12	12	12	12	12	11	12
4	11	12	12	12	12	11	12	12	12	12	12	12	12	12	12	12	12	12	12	12	12	11	12	12	12
5	11	12	12	12	11	12	12	12	12	12	12	12	12	12	12	12	12	12	12	12	12	12	12	12	12
6	11	11	12	12	12	12	12	12	12	12	12	12	13	12	12	12	12	12	12	12	12	12	12	12	12
7	12	12	12	12	12	11	11	12	12	12	12	12	12	12	12	12	12	12	12	12	12	12	12	12	12
8	12	12	12	12	12	11	12	12	12	12	12	12	12	12	12	12	12	11	12	12	12	12	12	12	12
9	12	11	12	12	12	12	12	12	12	12	12	12	12	12	12	12	12	11	12	12	12	12	12	12	12
10	12	12	12	12	12	12	12	11	12	12	13	13	12	12	12	12	12	12	12	12	12	12	11	14	12
11	12	11	12	12	12	11	12	12	12	12	12	12	12	12	12	12	12	12	12	11	12	12	11	12	12
12	11	12	12	12	12	12	12	11	12	12	12	12	12	12	12	12	12	12	12	12	12	12	12	13	12
13	11	12	12	12	12	12	12	12	12	12	12	12	12	12	12	12	12	12	12	12	12	12	12	14	12
14	12	12	12	12	12	12	12	12	12	12	12	12	12	12	12	12	12	12	12	12	12	12	12	12	12
15	12	12	12	12	12	12	12	12	12	12	12	12	12	12	11	11	12	12	12	12	12	12	12	14	12
16	12	12	12	12	12	12	12	12	12	12	12	12	12	12	12	12	12	12	12	12	12	12	12	14	12
17	12	12	12	12	12	12	12	12	12	12	12	12	12	12	12	12	12	12	12	12	12	12	12	12	12
18	12	12	12	12	12	12	12	12	12	12	12	12	12	12	12	12	12	12	12	12	12	12	12	14	12
19	12	12	12	12	12	12	12	12	13	15	15	14	14	13	12	13	12	12	12	12	12	12	12	14	13
20	12	12	12	12	12	12	12	12	12	12	12	12	12	12	12	12	12	12	12	12	12	12	12	14	12
21	12	12	12	12	12	12	12	12	12	12	12	12	12	12	12	12	12	12	12	12	12	12	12	14	12
22	12	12	12	12	12	12	12	12	12	13	12	12	12	12	12	12	12	12	12	12	12	12	12	14	12
23	12	12	12	12	12	12	12	12	12	12	12	12	12	12	12	12	12	12	12	12	12	12	13	12	12
24	12	12	12	12	12	12	12	12	12	12	12	12	12	12	12	12	12	12	12	12	12	12	13	14	12
25	12	13	13	13	12	12	13	12	13	13	12	12	13	12	12	12	12	12	12	12	12	13	13	12	12
26	12	12	12	12	12	12	12	12	12	12	12	12	12	12	12	12	12	12	12	12	12	12	12	12	12
27	12	12	12	12	12	12	12	12	12	12	12	12	12	12	12	12	12	12	12	12	12	12	12	12	12
28	12	12	12	12	12	12	12	12	12	12	12	12	12	12	12	12	12	12	12	12	12	12	12	12	12
29	12	12	12	12	12	12	12	12	12	12	12	12	12	12	12	12	12	12	12	12	12	12	12	12	12
30	12	12	12	12	12	12	12	12	12	12	12	13	13	13	12	13	13	13	13	13	12	12	13	13	12
31	12	12	13	12	13	12	12	12	13	13	13	13	12	13	13	13	13	13	13	13	12	13	13	13	13

MONTHLY STATISTICS:

GEOM	ARITH-----PERCENTILES-----							-----RANGE-----					STN GEOM	PERCENT	NO. OF TIMES	
MEAN	MEDIAN	MEAN	50	90	95	98	99	1-HR		24-HR			DEVIATION	VALID DATA	ABOVE LIMIT LEVEL	
12	12	12	12	12	13	13	14	10	-	15	12	-	13	1	100	0

NOTES: 1. FLAGS FOR INVALID DATA :
D: DYNAMIC CALIBRATION
T: TELEMETRY/DATALOGGR FAULT
M: MAINTENANCE OR ANALYZER FAULT
P: POWER FAILURE

THE HONGKONG ELECTRIC COMPANY, LTD.
AIR QUALITY DATA MONTHLY TIME SERIES REPORT

STATION : VICTORIA ROAD SUBSTATION
POLLUTANT : NITROGEN DIOXIDE

MONTH:OCTOBER

YEAR :2024

UNIT :MICROGRAMS/CUBIC METER

DAY	1	2	3	4	5	6	7	8	9	10	11	12	13	14	15	16	17	18	19	20	21	22	23	24	MEAN
1	24	13	7	6	6	6	8	8	7	7	7	7	7	7	5	6	6	8	9	8	6	6	6	6	8
2	5	4	4	4	4	4	6	10	13	9	9	10	9	9	8	8	10	9	10	7	6	5	5	5	7
3	4	3	3	3	3	3	5	9	10	12	11	10	10	9	10	10	12	14	18	14	10	8	8	8	9
4	8	6	5	5	4	5	8	14	21	24	20	16	16	13	16	14	17	16	18	18	14	13	13	12	13
5	10	7	6	6	5	4	6	11	14	14	16	16	16	14	12	10	16	16	16	18	16	10	9	9	12
6	9	6	5	5	5	5	6	7	6	10	7	10	26	12	7	11	12	19	13	18	21	21	34	37	13
7	37	29	21	13	6	6	8	13	14	19	18	17	15	20	11	11	11	26	27	32	25	20	18	19	18
8	9	7	6	6	5	6	9	13	14	15	13	12	14	14	9	10	12	15	9	7	5	5	5	6	9
9	7	M	6	6	5	9	10	12	14	17	14	13	16	15	17	15	12	6	6	6	6	5	4	3	10
10	3	2	2	2	2	1	1	2	4	6	9	13	23	9	10	14	12	12	10	8	8	8	8	7	7
11	5	4	3	3	3	3	4	7	10	8	6	6	6	8	8	7	7	7	7	7	6	5	4	4	6
12	4	4	4	4	4	4	6	7	8	10	11	14	12	11	14	14	16	11	9	9	6	5	4	4	8
13	4	3	3	3	3	3	4	4	5	5	5	5	5	5	5	4	5	7	8	7	6	5	4	4	5
14	3	3	3	2	2	3	4	6	8	8	8	7	6	7	7	9	9	8	7	6	4	3	4	6	6
15	4	3	2	2	2	2	5	7	11	8	8	7	6	8	10	14	14	12	10	5	6	5	6	6	7
16	3	3	3	2	3	3	5	7	10	9	6	6	6	7	8	10	11	9	6	4	3	4	3	3	6
17	2	2	2	2	2	2	3	5	8	8	8	7	8	9	9	11	12	12	9	6	5	5	6	4	6
18	4	3	2	2	2	2	4	5	8	7	7	7	7	7	8	9	15	16	12	14	11	10	12	14	8
19	8	9	5	6	5	4	5	17	20	27	41	43	39	26	19	17	17	19	14	12	10	7	6	6	16
20	4	3	3	2	2	2	3	3	4	4	4	3	3	3	4	4	4	5	6	6	5	4	4	4	4
21	4	5	3	3	3	3	5	8	11	12	9	8	10	15	8	7	10	13	10	9	8	5	6	7	8
22	7	5	3	3	3	5	8	10	15	17	15	10	15	12	12	17	15	22	20	10	7	8	8	7	11
23	6	M	4	3	4	4	4	6	9	11	10	11	8	7	8	8	10	10	9	8	8	8	9	8	8
24	7	5	5	4	4	4	10	13	17	13	12	12	13	13	11	12	15	14	14	14	14	15	13	12	11
25	9	7	5	4	4	4	6	12	14	15	13	12	12	12	11	12	13	13	14	12	11	9	9	8	10
26	7	6	5	5	4	5	6	7	7	7	8	7	8	9	9	10	11	11	9	8	6	7	6	7	7
27	5	5	5	5	5	4	4	4	4	4	4	5	5	4	5	6	6	7	10	11	12	12	14	11	7
28	7	6	7	8	5	4	6	8	12	14	11	13	14	13	17	14	15	15	15	16	12	10	9	12	11
29	9	6	8	6	5	3	4	7	9	9	9	7	9	9	9	10	17	17	19	18	20	18	12	11	10
30	9	7	7	6	5	8	8	12	15	14	10	10	15	16	14	17	17	22	26	25	21	16	15	18	14
31	17	13	9	5	4	5	5	10	17	18	19	17	12	12	13	19	19	21	22	20	16	14	16	14	14

MONTHLY STATISTICS:

GEOM	ARITH-----PERCENTILES-----							-----RANGE-----				STN GEOM	PERCENT	NO. OF TIMES		
MEAN	MEDIAN	MEAN	50	90	95	98	99	1-HR	24-HR		DEVIATION	VALID DATA	ABOVE	LIMIT LEVEL		
8	8	9	8	16	19	25	28	1	-	43	4	-	18	2	100	0

NOTES:

1. FLAGS FOR INVALID DATA :
 - D: DYNAMIC CALIBRATION
 - T: TELEMETRY/DATALOGGR FAULT
 - M: MAINTENANCE OR ANALYZER FAULT
 - P: POWER FAILURE

THE HONGKONG ELECTRIC COMPANY, LTD.
AIR QUALITY DATA MONTHLY TIME SERIES REPORT
MONTH: OCTOBER

STATION : POK FU LAM
POLLUTANT : SULPHUR DIOXIDE

YEAR : 2024
UNIT : MICROGRAMS/CUBIC METER

DAY	1	2	3	4	5	6	7	8	9	10	11	12	13	14	15	16	17	18	19	20	21	22	23	24	MEAN
1	13	13	12	12	12	12	12	12	12	14	15	15	10	5	4	7	9	10	10	12	11	11	11	13	11
2	11	11	11	11	11	11	11	11	11	11	12	11	10	9	9	10	12	11	11	11	11	11	11	13	11
3	11	11	11	11	11	11	11	11	11	12	12	11	10	10	10	11	11	11	11	11	11	11	12	13	11
4	12	11	12	11	11	11	12	11	12	12	12	12	12	11	11	12	13	12	12	11	11	11	11	13	12
5	11	11	11	12	11	12	12	12	12	12	13	13	12	11	11	11	12	13	13	12	12	11	11	14	12
6	12	12	11	11	11	11	11	12	13	13	12	11	10	9	11	11	12	11	12	11	12	11	11	15	12
7	13	15	13	12	12	12	12	12	12	13	13	11	12	13	12	12	11	13	13	13	12	12	12	15	13
8	13	13	13	13	13	12	12	12	13	13	12	11	11	10	10	11	13	12	12	11	11	11	11	14	12
9	12	12	12	12	12	13	13	12	13	13	12	12	13	12	13	13	12	12	12	12	12	12	12	15	12
10	13	13	12	12	12	12	12	12	13	16	15	13	13	10	11	11	12	12	13	12	12	12	12	14	12
11	13	12	12	12	12	12	12	12	11	12	12	12	12	13	13	13	13	13	13	12	12	12	12	14	12
12	13	12	12	12	12	12	13	12	12	14	13	13	12	12	13	13	14	14	13	13	12	12	12	14	13
13	12	13	13	13	13	13	12	13	12	13	13	12	12	12	12	13	13	13	13	13	13	13	12	15	13
14	13	13	13	13	13	13	13	13	13	14	12	12	11	11	11	12	13	13	13	13	13	13	13	15	13
15	13	13	13	13	13	13	13	13	13	13	14	13	12	12	12	12	13	14	13	13	13	13	13	16	13
16	13	13	13	13	13	13	13	13	13	13	15	14	14	12	12	13	14	14	13	13	13	13	13	15	13
17	14	14	13	13	13	13	13	13	13	13	15	13	12	12	13	14	14	14	14	14	14	14	13	16	14
18	14	14	14	14	14	14	13	14	14	14	14	14	13	12	12	13	14	14	14	14	14	13	14	17	14
19	15	15	14	14	14	14	14	15	17	22	20	21	16	14	9	11	13	13	14	14	13	14	14	16	15
20	14	14	14	14	13	14	13	13	13	13	13	13	14	14	14	15	14	14	14	13	13	14	16	14	
21	14	14	14	14	13	14	14	14	14	14	14	15	15	14	14	14	15	15	15	15	14	14	17	14	
22	15	15	14	14	15	14	14	15	16	16	15	15	16	13	13	14	15	17	16	15	15	15	15	17	15
23	15	15	15	15	15	15	15	15	15	15	16	16	14	14	14	15	16	15	15	15	15	16	16	18	15
24	16	16	16	16	16	17	17	17	17	17	18	19	18	17	17	18	18	18	18	17	18	18	18	20	17
25	18	18	18	18	18	18	18	18	18	19	19	17	16	17	17	17	18	18	18	18	18	18	18	20	18
26	19	19	18	18	18	18	18	17	17	17	17	16	16	16	16	17	17	16	16	16	16	16	16	19	17
27	17	17	17	17	17	16	16	16	16	16	17	16	14	15	15	17	17	16	16	16	17	17	16	19	16
28	17	17	16	15	17	17	16	16	16	16	17	17	17	17	17	17	17	17	17	17	17	16	16	19	17
29	17	16	17	17	17	16	16	16	16	16	16	17	17	16	17	17	17	17	17	17	17	17	17	19	17
30	17	17	16	17	17	17	17	17	17	18	18	17	16	17	16	17	24	19	19	19	18	18	18	21	18
31	19	19	19	19	19	19	19	19	20	21	21	19	17	17	18	M	16	18	19	19	19	19	19	22	19

MONTHLY STATISTICS:

GEOM	ARITH-----PERCENTILES-----										RANGE-----		STN GEOM	PERCENT	NO. OF TIMES	
MEAN	MEDIAN	MEAN	50	90	95	98	99	1-HR		24-HR		DEVIATION	VALID DATA	ABOVE	LIMIT LEVEL	
14	13	14	13	18	18	19	20	4	-	24	11	-	19	1	100	0

- NOTES: 1. FLAGS FOR INVALID DATA :
- D: DYNAMIC CALIBRATION
 - T: TELEMETRY/DATALOGGR FAULT
 - M: MAINTENANCE OR ANALYZER FAULT
 - P: POWER FAILURE

THE HONGKONG ELECTRIC COMPANY, LTD.
AIR QUALITY DATA MONTHLY TIME SERIES REPORT
MONTH: OCTOBER

STATION : POK FU LAM
POLLUTANT : NITROGEN DIOXIDE

YEAR : 2024
UNIT : MICROGRAMS/CUBIC METER

DAY	1	2	3	4	5	6	7	8	9	10	11	12	13	14	15	16	17	18	19	20	21	22	23	24	MEAN
1	46	20	7	4	6	7	11	11	7	7	6	3	5	4	2	4	6	11	13	12	9	5	5	2	9
2	1	0	0	0	0	0	7	21	21	19	13	17	12	11	13	17	18	16	24	8	4	2	3	1	10
3	0	0	0	0	0	0	6	22	31	28	20	14	10	9	7	9	13	21	37	21	13	4	5	4	11
4	2	2	0	0	0	2	9	28	44	41	27	17	18	10	22	15	24	22	30	23	15	16	17	10	16
5	7	2	2	4	0	0	2	10	20	21	21	19	20	11	18	11	17	24	34	41	15	5	2	2	13
6	2	0	0	0	0	1	7	12	12	8	1	0	24	8	8	9	9	13	30	17	21	20	34	56	12
7	78	90	44	14	0	0	4	11	27	24	24	20	13	21	11	10	11	43	38	26	26	26	31	38	26
8	13	4	2	0	2	3	12	22	29	22	18	15	20	24	9	11	21	16	8	5	1	0	0	0	11
9	0	0	7	2	0	14	14	19	24	38	28	24	24	31	27	21	10	18	22	12	6	2	1	1	14
10	1	7	5	5	5	3	5	21	30	43	37	31	41	6	3	3	3	7	10	8	3	0	4	0	12
11	0	0	0	0	0	0	0	0	1	0	0	0	2	7	11	2	0	6	7	4	2	0	0	0	2
12	0	0	0	0	0	0	0	1	1	2	2	9	4	2	4	6	9	11	8	7	0	0	0	0	3
13	0	M	0	0	0	0	0	0	0	0	0	0	0	0	0	0	0	0	0	0	0	0	0	0	0
14	0	0	0	0	0	0	0	0	2	5	0	0	0	1	1	2	1	2	4	1	0	0	0	0	1
15	0	0	0	0	0	0	0	4	3	1	0	1	0	1	3	6	8	16	8	0	0	3	2	3	2
16	0	0	0	0	0	0	0	2	4	3	0	1	0	0	0	0	2	1	0	0	0	0	0	0	1
17	0	0	0	0	0	0	0	1	0	0	0	0	0	0	0	0	6	11	1	0	0	1	0	0	1
18	0	0	0	0	0	0	0	0	0	0	0	0	0	0	0	1	6	17	16	11	14	9	7	20	4
19	24	18	6	3	0	1	19	14	33	52	55	67	40	36	29	18	12	10	9	7	2	0	0	0	19
20	0	0	0	0	0	0	0	0	0	0	0	0	0	0	0	0	0	1	3	2	0	0	0	0	0
21	0	0	0	0	0	0	0	16	8	7	6	9	11	12	12	10	10	22	11	5	3	1	0	1	6
22	0	0	0	0	0	0	0	14	32	25	15	9	21	13	16	28	24	44	32	9	6	9	8	5	13
23	4	0	0	1	0	3	3	11	20	14	12	11	12	14	17	15	25	21	20	18	12	16	19	11	12
24	5	2	0	0	0	3	23	33	42	28	22	28	21	19	17	22	28	31	31	25	30	23	25	19	20
25	11	6	2	0	0	2	7	21	28	26	23	22	21	16	18	20	25	24	28	24	19	11	14	8	16
26	7	3	2	1	0	2	3	12	19	13	4	2	0	2	3	9	7	6	9	3	0	0	0	0	4
27	0	M	0	0	0	0	0	0	0	0	0	0	0	0	0	0	0	0	3	17	20	16	18	11	4
28	6	5	6	8	1	0	3	12	30	22	19	20	22	24	29	10	10	13	41	32	11	13	6	23	15
29	11	7	7	6	3	0	1	8	11	8	4	5	8	4	10	18	25	32	44	41	33	30	15	15	14
30	14	7	6	4	6	11	14	28	29	22	5	15	17	25	18	12	24	36	56	54	42	32	34	32	23
31	33	20	15	4	2	11	6	23	30	32	36	25	14	13	16	M	26	38	39	32	26	23	29	21	22

MONTHLY STATISTICS:

GEOM	ARITH-----PERCENTILES-----							-----RANGE-----				STN GEOM	PERCENT	NO. OF TIMES		
MEAN	MEDIAN	MEAN	50	90	95	98	99	1-HR	24-HR	DEVIATION	VALID DATA	ABOVE	LIMIT	LEVEL		
10	6	10	6	28	33	42	50	0	-	90	0	-	26	3	100	0

- NOTES: 1. FLAGS FOR INVALID DATA :
- D: DYNAMIC CALIBRATION
 - T: TELEMETRY/DATALOGGR FAULT
 - M: MAINTENANCE OR ANALYZER FAULT
 - P: POWER FAILURE

THE HONGKONG ELECTRIC COMPANY, LTD.
AIR QUALITY DATA MONTHLY TIME SERIES REPORT
MONTH:OCTOBER

STATION : AP LEI CHAU
POLLUTANT : SULPHUR DIOXIDE

YEAR : 2024
UNIT : MICROGRAMS/CUBIC METER

DAY	1	2	3	4	5	6	7	8	9	10	11	12	13	14	15	16	17	18	19	20	21	22	23	24	MEAN
1	8	8	7	7	7	7	7	7	7	7	7	7	7	8	7	7	7	7	7	7	7	7	7	7	7
2	7	7	7	7	7	7	7	7	7	7	7	7	7	7	7	7	7	7	7	7	7	7	7	7	7
3	7	7	7	7	7	7	7	7	7	8	8	7	7	7	7	7	7	7	7	7	7	8	8	7	7
4	7	7	7	7	7	7	7	8	8	8	8	8	8	8	8	8	8	8	7	7	7	7	7	7	7
5	7	7	7	7	7	7	7	8	7	8	9	9	9	9	8	8	8	8	9	8	7	7	7	7	8
6	7	7	7	7	7	7	8	8	8	8	8	7	7	7	7	7	7	7	7	8	7	8	10	7	7
7	7	7	7	7	7	7	7	7	8	8	8	7	9	9	8	7	7	8	9	9	9	9	8	9	8
8	8	8	8	8	8	7	7	8	8	8	8	8	8	7	7	7	7	7	7	7	7	7	7	7	7
9	7	7	7	7	7	7	8	7	8	7	7	7	7	7	7	6	7	7	7	7	7	7	7	7	7
10	7	7	7	7	7	7	7	7	7	10	10	10	8	7	7	7	7	7	7	7	7	7	7	7	6
11	6	6	6	6	6	6	6	6	6	6	6	7	7	7	7	7	7	7	7	7	7	6	7	7	7
12	7	7	7	6	7	7	7	7	7	7	7	8	7	7	7	7	7	7	7	7	7	7	7	7	7
13	7	7	7	6	7	7	7	7	7	7	7	7	7	7	7	7	7	7	7	7	7	7	7	7	6
14	7	7	7	7	7	7	7	7	6	7	7	7	7	7	7	7	7	7	7	7	7	7	7	7	7
15	7	7	7	7	6	7	7	7	7	7	7	7	7	7	6	7	7	7	7	7	7	7	7	7	7
16	7	7	7	7	7	7	7	7	7	7	8	7	7	7	7	7	7	7	6	7	7	6	7	7	7
17	6	7	7	7	7	7	7	7	7	7	7	7	7	7	7	7	7	7	7	7	7	7	7	7	7
18	7	7	7	7	7	7	7	7	7	7	6	7	7	7	7	6	7	7	7	7	7	7	7	7	7
19	7	7	7	7	7	8	11	15	18	16	21	15	11	11	8	7	6	7	7	7	7	6	6	6	10
20	6	6	6	6	7	6	7	6	6	6	7	7	7	7	7	7	6	7	7	7	7	7	7	7	7
21	7	7	7	7	7	7	7	6	7	7	7	7	7	7	7	7	7	7	7	7	7	7	7	7	7
22	7	7	7	7	7	7	7	7	8	8	8	8	8	8	8	9	9	9	8	7	7	7	7	7	8
23	7	7	7	7	7	7	7	7	7	7	7	7	7	7	7	7	7	7	7	7	7	7	7	7	7
24	7	7	7	7	7	7	8	8	8	8	8	8	8	8	8	8	8	8	8	8	8	8	8	8	8
25	8	8	8	8	8	9	8	9	9	9	8	8	8	8	8	8	8	8	8	8	8	8	8	8	8
26	8	8	8	8	7	7	7	7	8	8	8	M	8	8	7	8	7	7	7	7	7	7	7	7	7
27	7	8	7	8	8	7	7	7	7	7	7	7	7	M	7	7	7	7	7	7	7	7	7	7	7
28	7	7	7	7	7	7	7	7	7	7	7	7	7	8	7	7	7	7	7	7	7	7	7	7	7
29	7	7	7	7	7	7	7	7	7	7	7	7	7	7	7	7	7	7	7	7	7	7	7	7	7
30	7	7	7	7	7	7	7	7	8	8	8	8	9	9	9	11	9	9	9	8	8	8	8	8	8
31	8	8	8	8	8	8	8	8	9	9	9	9	8	8	8	8	8	8	8	7	8	8	8	8	8

MONTHLY STATISTICS:

GEOM	ARITH-----PERCENTILES-----							-----RANGE-----				STN GEOM	PERCENT	NO. OF TIMES		
MEAN	MEDIAN	MEAN	50	90	95	98	99	1-HR		24-HR		DEVIATION	VALID DATA	ABOVE LIMIT LEVEL		
7	7	7	7	8	9	9	11	6	-	21	7	-	10	1	100	0

NOTES: 1. FLAGS FOR INVALID DATA :
D: DYNAMIC CALIBRATION
T: TELEMETRY/DATALOGGR FAULT
M: MAINTENANCE OR ANALYZER FAULT
P: POWER FAILURE

THE HONGKONG ELECTRIC COMPANY, LTD.
AIR QUALITY DATA MONTHLY TIME SERIES REPORT
MONTH: OCTOBER

STATION : AP LEI CHAU
POLLUTANT : NITROGEN DIOXIDE

YEAR : 2024
UNIT : MICROGRAMS/CUBIC METER

DAY	1	2	3	4	5	6	7	8	9	10	11	12	13	14	15	16	17	18	19	20	21	22	23	24	MEAN
1	22	M	11	8	6	6	10	8	7	10	10	7	6	7	5	6	8	12	8	9	8	7	8	9	9
2	8	7	5	6	6	7	7	10	10	16	11	10	10	11	11	11	12	15	15	12	12	11	11	9	10
3	8	6	4	4	4	6	9	16	15	14	16	17	18	16	16	19	20	26	24	16	14	11	9	9	13
4	8	8	7	7	7	9	13	24	32	34	32	32	29	25	33	21	24	21	24	22	17	18	16	12	20
5	11	8	7	8	6	8	10	13	16	24	29	28	30	22	13	11	23	34	36	19	10	6	9	9	16
6	11	8	7	7	7	9	10	11	11	8	6	5	4	3	5	5	5	14	7	23	15	24	44	17	11
7	16	27	10	12	8	9	11	15	21	27	27	24	23	25	17	6	11	30	46	46	33	23	21	31	22
8	14	11	9	8	9	11	15	18	17	18	14	11	12	7	7	8	7	4	4	6	4	4	7	7	10
9	8	8	9	6	7	8	15	20	25	27	17	22	21	15	17	11	12	25	23	15	10	7	10	11	15
10	11	8	9	10	11	11	12	17	23	39	43	40	15	4	3	4	4	4	4	4	5	4	5	3	12
11	4	3	2	4	4	6	8	9	11	7	5	8	9	8	5	5	4	7	10	6	4	3	3	3	6
12	3	3	3	3	3	5	7	6	6	6	5	6	6	5	6	5	5	4	7	5	2	2	3	2	4
13	3	3	2	2	3	4	3	5	6	4	4	4	4	3	4	2	3	6	6	5	3	4	3	2	4
14	3	2	3	2	2	4	5	4	4	3	3	2	2	2	3	4	3	2	2	2	2	1	2	5	3
15	6	M	2	3	3	3	5	5	4	3	2	4	2	4	4	5	5	6	2	2	2	3	7	8	4
16	6	2	2	1	2	3	5	5	5	4	6	5	4	3	3	2	2	2	2	0	1	1	1	1	3
17	0	0	1	0	1	2	3	3	3	4	3	3	2	1	2	1	3	2	4	2	2	4	3	2	2
18	4	4	3	2	1	1	3	1	3	4	2	2	1	0	1	1	4	7	5	7	9	5	5	9	4
19	7	7	6	6	10	26	47	40	42	40	51	41	25	24	18	8	8	8	4	3	4	4	4	3	18
20	2	1	2	2	1	1	1	3	2	2	2	2	2	2	2	2	3	5	6	5	4	3	3	5	3
21	3	3	3	2	2	4	8	14	16	13	11	10	20	8	4	5	6	8	6	5	5	6	7	9	7
22	6	4	4	5	4	7	12	16	16	19	25	15	22	25	19	25	23	26	24	12	11	12	12	12	15
23	9	8	7	6	6	7	8	14	16	14	14	16	18	15	15	14	18	23	20	15	14	16	16	15	14
24	14	11	9	7	7	9	12	24	24	23	23	24	21	23	20	19	18	21	24	26	21	24	22	22	19
25	19	14	10	10	9	10	16	22	23	21	20	21	17	17	17	17	20	23	25	25	19	16	15	13	17
26	11	8	7	6	5	7	10	10	10	8	8	M	7	9	11	10	13	17	16	15	11	10	8	7	10
27	6	5	5	6	5	5	5	4	3	3	3	4	3	M	4	5	4	7	12	16	19	18	14	16	7
28	14	10	10	13	9	10	12	16	20	18	19	24	23	26	26	16	12	16	18	17	21	18	13	21	17
29	16	M	12	9	6	6	10	15	14	10	6	6	5	10	13	19	22	35	33	35	24	22	17	17	16
30	15	13	14	11	9	10	16	19	22	22	7	14	19	32	23	28	28	28	31	22	21	28	31	21	20
31	29	23	14	11	10	10	11	15	30	30	29	29	20	17	19	26	25	31	27	26	23	20	22	17	21

MONTHLY STATISTICS:

GEOM		ARITH-----PERCENTILES-----							-----RANGE-----				STN GEOM	PERCENT	NO. OF TIMES	
MEAN	MEDIAN	MEAN	50	90	95	98	99	1-HR	24-HR	DEVIATION	VALID DATA	ABOVE	LIMIT	LEVEL		
8	8	11	8	24	28	34	41	0	-	51	2	-	22	2	99	0

- NOTES: 1. FLAGS FOR INVALID DATA :
- D: DYNAMIC CALIBRATION
 - T: TELEMETRY/DATALOGGR FAULT
 - M: MAINTENANCE OR ANALYZER FAULT
 - P: POWER FAILURE

THE HONGKONG ELECTRIC COMPANY, LTD.
AIR QUALITY DATA MONTHLY TIME SERIES REPORT
MONTH: OCTOBER

STATION : CHEUNG CHAU
POLLUTANT : SULPHUR DIOXIDE

YEAR : 2024
UNIT : MICROGRAMS/CUBIC METER

DAY	1	2	3	4	5	6	7	8	9	10	11	12	13	14	15	16	17	18	19	20	21	22	23	24	MEAN
1	2	1	1	1	1	1	1	2	2	1	1	1	1	1	1	1	1	1	1	0	1	1	1	2	1
2	1	1	1	1	1	1	1	1	1	1	1	1	1	1	1	1	1	1	1	1	1	1	1	2	1
3	1	1	1	1	0	1	1	1	1	1	1	1	1	1	1	1	1	1	0	1	1	1	1	2	1
4	1	1	1	1	1	1	1	1	1	1	1	1	1	1	1	1	1	1	1	1	1	1	1	1	1
5	1	1	1	1	1	1	1	2	2	2	2	2	1	1	1	1	1	0	1	1	1	1	0	2	1
6	1	1	1	0	1	1	1	1	1	2	2	2	2	2	1	1	1	1	0	0	1	1	1	2	1
7	0	0	0	0	0	0	1	1	1	1	2	2	1	2	2	1	1	1	0	0	1	2	1	2	1
8	1	2	1	1	1	1	1	1	1	1	2	1	1	1	1	1	1	0	0	0	0	1	0	2	1
9	1	1	1	1	1	1	1	1	2	1	2	2	1	1	2	3	1	1	1	1	1	1	1	2	1
10	1	1	1	1	1	1	1	0	1	1	1	1	1	1	1	1	0	0	0	0	0	0	0	2	1
11	0	0	0	0	0	0	0	0	0	1	0	0	1	1	1	1	1	1	3	2	1	1	0	1	1
12	0	0	0	1	0	0	1	1	1	2	3	1	1	1	1	1	1	0	0	1	0	0	1	2	1
13	2	2	5	6	1	1	0	0	1	1	2	9	3	1	1	1	0	2	2	3	2	1	0	1	2
14	0	0	0	0	0	4	6	5	8	8	5	0	1	0	2	1	0	0	0	0	0	0	0	2	2
15	1	1	1	1	1	1	1	0	5	8	2	2	2	12	1	1	0	0	0	0	0	0	1	2	2
16	1	1	1	1	0	1	1	1	2	8	1	2	6	3	1	1	0	0	0	0	0	0	0	2	1
17	0	0	0	0	0	1	1	2	8	5	4	1	1	0	1	0	0	0	2	1	0	0	0	1	1
18	1	1	1	1	1	0	0	0	1	1	1	0	0	1	0	0	0	0	0	0	1	0	0	2	1
19	1	1	1	2	2	1	1	1	2	2	2	3	3	2	2	2	1	1	1	1	1	1	0	2	2
20	1	1	1	2	1	0	0	1	0	9	21	21	16	11	3	7	3	3	2	3	2	1	1	2	5
21	2	2	3	4	4	1	1	1	2	2	2	2	2	1	2	2	2	2	1	1	1	2	1	3	2
22	1	2	6	1	1	2	1	1	2	2	2	1	1	1	2	2	2	1	1	1	1	1	1	2	2
23	1	1	1	1	1	1	1	1	1	1	1	1	1	1	1	1	1	1	1	1	1	1	1	2	1
24	1	1	1	1	1	1	1	1	1	1	2	1	1	2	1	2	1	1	2	2	2	2	2	3	1
25	2	2	2	2	2	2	2	2	2	2	2	2	2	2	2	2	2	1	1	2	1	2	2	3	2
26	2	2	2	2	2	2	2	2	2	2	2	1	1	1	1	1	1	1	1	1	1	1	1	2	2
27	1	1	1	1	1	1	1	1	2	1	1	1	1	1	1	1	1	1	1	1	2	1	1	2	1
28	1	1	1	1	1	1	1	1	1	1	1	1	1	1	1	1	1	2	2	2	2	2	1	2	1
29	1	1	1	1	1	1	1	1	2	2	2	2	1	1	1	2	1	1	1	1	1	1	2	2	1
30	2	2	1	1	1	1	1	1	2	2	2	2	2	2	2	2	2	2	2	1	1	2	2	3	2
31	2	2	2	2	2	2	2	2	3	2	2	4	2	2	M	1	0	0	0	0	1	1	0	0	1

MONTHLY STATISTICS:

GEOM	ARITH-----PERCENTILES-----								-----RANGE-----				STN GEOM	PERCENT	NO. OF TIMES	
MEAN	MEDIAN	MEAN	50	90	95	98	99	1-HR		24-HR		DEVIATION	VALID DATA	ABOVE	LIMIT LEVEL	
1	1	1	1	2	3	6	8	0	-	21	1	-	5	2	100	0

- NOTES: 1. FLAGS FOR INVALID DATA :
- D: DYNAMIC CALIBRATION
 - T: TELEMETRY/DATALOGGR FAULT
 - M: MAINTENANCE OR ANALYZER FAULT
 - P: POWER FAILURE

THE HONGKONG ELECTRIC COMPANY, LTD.
AIR QUALITY DATA MONTHLY TIME SERIES REPORT
MONTH: OCTOBER

STATION : CHEUNG CHAU
POLLUTANT : NITROGEN DIOXIDE

YEAR : 2024
UNIT : MICROGRAMS/CUBIC METER

DAY	1	2	3	4	5	6	7	8	9	10	11	12	13	14	15	16	17	18	19	20	21	22	23	24	MEAN
1	43	37	21	23	28	27	27	26	25	20	15	17	20	23	23	16	31	29	29	21	18	25	24	29	25
2	28	23	19	17	18	18	25	21	18	21	21	22	26	25	23	24	24	33	40	31	30	25	29	22	24
3	19	15	16	19	17	18	19	26	27	26	22	20	22	29	39	26	23	29	26	30	57	35	24	17	25
4	19	19	15	13	16	22	25	28	36	43	27	30	45	39	37	42	47	61	33	35	66	30	22	26	32
5	22	18	14	12	15	22	26	36	37	38	30	37	30	36	24	12	13	19	18	36	25	27	12	31	25
6	29	33	35	25	29	28	35	30	29	31	30	27	26	13	9	11	15	14	23	16	14	33	26	91	27
7	68	28	39	46	54	25	35	32	29	34	35	46	32	31	16	9	9	9	14	29	84	79	78	36	
8	52	29	19	26	21	19	23	23	26	26	32	42	29	16	10	9	8	11	7	11	9	18	8	10	20
9	16	29	31	24	23	25	27	31	36	27	43	55	45	51	49	60	48	40	62	55	27	21	13	13	35
10	32	29	30	30	25	19	24	26	24	27	31	37	40	16	8	9	5	6	6	7	5	6	8	13	19
11	12	10	11	8	20	32	25	29	36	34	10	11	15	22	17	9	7	9	19	18	12	9	7	7	16
12	6	6	6	10	9	9	10	12	10	16	20	12	6	6	5	7	7	6	7	11	6	6	9	9	9
13	12	8	11	11	8	23	10	10	21	14	9	10	6	5	5	5	3	7	10	11	10	8	7	9	10
14	5	9	9	7	4	9	15	9	10	12	9	3	3	2	4	3	3	4	4	7	8	5	4	10	7
15	11	8	12	10	6	7	10	7	11	14	5	5	6	11	4	3	4	5	4	5	5	7	13	14	8
16	15	12	13	11	5	13	15	10	11	15	10	14	10	6	5	5	4	5	5	7	5	7	7	6	9
17	5	5	3	4	5	14	9	14	19	11	8	5	4	3	2	3	3	5	6	6	5	12	7	7	7
18	4	12	11	12	14	7	5	4	5	7	6	3	2	2	3	2	3	7	3	5	8	7	8	13	6
19	18	46	34	52	55	45	38	43	38	42	41	42	33	21	18	14	20	30	18	12	9	9	7	7	29
20	8	6	5	9	6	3	5	6	5	11	17	15	12	10	5	9	6	8	10	13	13	9	6	10	9
21	10	8	13	14	12	8	15	35	38	41	37	34	32	17	8	8	13	15	13	10	11	9	8	12	18
22	15	12	13	14	27	9	29	37	44	35	36	30	23	33	26	18	15	14	19	34	32	15	15	17	23
23	14	M	11	9	9	10	14	19	21	19	22	22	20	19	26	26	33	31	28	25	24	21	21	24	20
24	25	25	28	30	26	21	28	30	37	41	40	37	40	39	41	59	44	59	64	69	65	56	47	42	41
25	41	46	45	38	36	39	36	34	39	44	35	41	40	40	55	53	55	34	36	40	35	29	43	29	40
26	24	23	18	17	19	20	21	35	34	27	22	24	23	24	32	36	37	17	20	60	47	41	52	35	30
27	24	11	10	10	10	8	8	10	33	22	13	25	24	16	7	7	8	11	32	56	55	58	59	46	23
28	24	26	20	16	17	19	18	23	27	27	23	22	29	28	24	35	58	63	81	66	45	45	41	39	34
29	30	38	24	18	17	19	26	33	35	38	42	18	34	42	33	61	55	58	93	78	87	78	65	42	44
30	49	41	32	29	28	25	24	31	31	30	37	37	32	33	21	20	14	37	53	19	40	44	46	44	33
31	36	31	30	27	21	26	28	27	36	36	35	49	43	42	M	41	42	33	43	51	55	58	51	32	38

MONTHLY STATISTICS:

GEOM	ARITH-----PERCENTILES-----							-----RANGE-----					STN GEOM	PERCENT	NO. OF TIMES	
MEAN	MEDIAN	MEAN	50	90	95	98	99	1-HR	24-HR	DEVIATION	VALID DATA	ABOVE	LIMIT	LEVEL		
18	21	23	21	43	55	64	78	2	-	93	6	-	44	2	100	0

- NOTES: 1. FLAGS FOR INVALID DATA :
- D: DYNAMIC CALIBRATION
 - T: TELEMETRY/DATALOGGR FAULT
 - M: MAINTENANCE OR ANALYZER FAULT
 - P: POWER FAILURE

THE HONGKONG ELECTRIC COMPANY, LTD.
AIR QUALITY DATA MONTHLY TIME SERIES REPORT
MONTH: NOVEMBER

STATION : VICTORIA PEAK
POLLUTANT : SULPHUR DIOXIDE

YEAR : 2024
UNIT : MICROGRAMS/CUBIC METER

DAY	1	2	3	4	5	6	7	8	9	10	11	12	13	14	15	16	17	18	19	20	21	22	23	24	MEAN
1	0	0	0	0	0	0	0	0	0	0	0	0	0	0	0	0	0	0	0	0	0	0	0	0	0
2	0	0	0	0	0	0	0	0	0	0	0	0	0	0	0	0	0	0	0	0	0	0	0	0	0
3	0	0	0	0	0	0	0	0	0	0	0	0	0	0	0	0	0	0	0	0	0	0	0	0	0
4	0	0	0	0	0	0	0	0	0	0	0	0	0	0	0	0	0	0	0	0	0	0	0	0	0
5	0	0	0	0	0	0	0	0	0	0	0	0	0	0	0	0	0	0	0	0	0	0	0	0	0
6	0	0	0	0	0	0	0	0	0	0	0	0	0	0	0	0	0	0	0	0	0	0	0	0	0
7	0	0	0	0	0	0	0	0	0	0	0	0	0	0	0	0	0	0	0	0	0	0	0	0	0
8	0	0	0	0	0	0	0	0	0	0	0	0	0	0	0	0	0	0	0	0	0	0	0	0	0
9	0	0	0	0	0	0	0	0	0	0	0	0	0	0	0	0	0	0	0	0	0	0	0	0	0
10	0	0	0	0	0	0	0	0	0	0	0	0	0	0	0	0	0	0	0	0	0	0	0	0	0
11	0	0	0	0	0	0	0	0	0	0	0	0	0	0	0	0	0	0	0	0	0	0	0	0	0
12	0	0	0	0	0	0	0	0	0	0	0	0	0	0	0	0	0	0	0	0	0	0	0	0	0
13	0	0	0	0	0	0	0	0	0	0	0	0	0	0	0	0	0	0	0	0	0	0	0	0	0
14	0	0	0	0	0	0	0	0	0	0	0	0	0	0	0	0	0	0	0	0	0	0	0	0	0
15	0	0	0	0	0	0	0	0	0	0	0	0	0	0	0	0	0	0	0	0	0	0	0	0	0
16	0	0	0	0	0	0	0	0	0	0	0	0	0	0	0	0	0	0	0	0	0	0	0	0	0
17	0	0	0	0	0	0	0	0	0	0	0	0	0	0	0	0	0	0	0	0	0	0	0	0	0
18	0	0	0	0	0	0	0	0	0	0	0	0	0	0	0	0	0	0	0	0	0	0	0	0	0
19	0	0	0	0	0	0	0	0	0	0	0	0	0	0	0	0	0	0	0	0	0	0	0	0	0
20	0	0	0	0	0	0	0	0	0	0	0	0	0	0	0	0	0	0	0	0	0	0	0	0	0
21	0	0	0	0	0	0	0	0	0	0	0	0	0	0	0	0	0	0	0	0	0	0	0	0	0
22	0	0	0	0	0	0	0	0	0	0	0	0	0	0	0	0	0	0	0	0	0	0	0	0	0
23	0	0	0	0	0	0	0	0	0	0	0	0	0	0	0	0	0	0	0	0	0	0	0	0	0
24	0	0	0	0	0	0	0	0	0	0	0	0	0	0	0	0	0	0	0	0	0	0	0	0	0
25	0	0	0	0	0	0	0	0	0	0	0	0	0	0	0	0	0	0	0	0	0	0	0	0	0
26	0	0	0	0	0	0	0	0	0	0	0	M	M	M	M	M	M	0	0	0	0	0	0	0	1
27	0	0	0	0	0	0	0	0	0	0	0	0	0	0	0	0	0	0	0	0	0	0	0	0	0
28	0	0	0	0	0	1	0	0	0	0	0	0	0	0	1	2	1	0	1	1	1	1	1	1	0
29	1	2	1	2	0	1	1	1	1	1	0	1	1	1	2	3	2	2	2	2	1	2	2	2	1
30	2	2	2	2	1	2	2	3	3	3	3	3	4	5	5	5	5	3	3	3	3	3	3	4	3

MONTHLY STATISTICS:

ARITH-----PERCENTILES-----RANGE-----											STN GEOM		PERCENT		NO. OF TIMES		
MEAN	MEDIAN	MEAN	50	90	95	98	99	1-HR		24-HR	DEVIATION	VALID DATA	ABOVE LIMIT LEVEL				
2	0	0	0	0	1	3	3	0	-	5	0	-	3	2	99	0	0

- NOTES: 1. FLAGS FOR INVALID DATA :
- D: DYNAMIC CALIBRATION
 - T: TELEMETRY/DATALOGGR FAULT
 - M: MAINTENANCE OR ANALYZER FAULT
 - P: POWER FAILURE

THE HONGKONG ELECTRIC COMPANY, LTD.
AIR QUALITY DATA MONTHLY TIME SERIES REPORT
MONTH: NOVEMBER

STATION : VICTORIA PEAK
POLLUTANT : NITROGEN DIOXIDE

YEAR : 2024
UNIT : MICROGRAMS/CUBIC METER

DAY	1	2	3	4	5	6	7	8	9	10	11	12	13	14	15	16	17	18	19	20	21	22	23	24	MEAN
1	13	16	14	13	9	11	14	22	18	18	18	19	17	17	23	23	29	32	35	24	20	17	16	11	19
2	10	10	9	8	7	8	11	16	26	33	29	26	26	30	22	16	18	35	44	38	23	20	15	9	20
3	8	8	7	8	7	8	9	10	11	12	13	12	9	10	8	12	13	16	12	10	11	11	9	9	10
4	8	7	5	6	6	6	9	17	23	25	17	20	18	18	24	24	39	48	38	22	17	12	7	4	18
5	5	7	4	4	7	8	17	26	33	36	28	21	17	19	21	26	27	43	51	23	15	17	15	14	20
6	12	M	10	9	11	12	15	27	31	33	27	23	18	23	20	15	24	36	18	12	8	6	6	6	17
7	10	8	14	16	15	11	14	18	21	32	27	24	18	19	25	24	17	13	7	7	14	19	20	14	17
8	17	14	13	13	16	20	23	36	32	36	32	28	26	20	25	35	49	51	50	37	39	30	29	19	29
9	17	13	10	8	8	8	14	18	21	19	21	22	18	16	16	17	20	20	16	10	9	6	5	4	14
10	4	4	4	4	3	5	8	9	11	11	11	18	19	16	19	22	35	33	27	23	18	16	19	13	15
11	13	18	14	7	8	10	14	17	19	16	14	13	9	12	15	18	31	33	19	10	13	16	16	11	15
12	10	7	8	7	7	6	18	25	28	30	28	23	27	31	33	25	33	42	44	31	12	16	9	8	21
13	10	9	8	9	9	11	20	26	28	21	26	26	19	26	20	24	29	31	30	17	9	8	7	5	18
14	2	1	1	1	1	1	1	2	2	1	2	3	5	5	5	6	7	5	6	4	3	3	3	3	3
15	3	3	2	1	1	3	3	7	11	12	13	12	16	22	22	26	23	24	15	4	1	0	1	4	10
16	8	3	2	1	1	1	4	6	5	7	32	45	29	27	36	42	49	50	45	40	25	13	7	5	20
17	5	5	3	3	8	7	5	4	6	8	11	18	12	12	23	25	27	34	38	18	6	8	10	10	13
18	10	8	9	8	7	8	14	18	18	18	19	23	24	23	31	34	33	36	41	20	20	17	13	16	20
19	13	16	15	10	9	9	13	16	21	21	22	22	21	22	26	31	31	34	34	30	26	24	17	20	21
20	16	M	8	5	4	7	11	19	19	23	25	26	27	26	31	35	38	33	35	35	34	27	24	21	23
21	18	15	11	8	8	6	11	17	21	30	31	29	33	31	30	32	35	39	40	36	28	23	19	14	24
22	11	20	14	10	13	9	13	22	30	31	32	28	24	26	26	31	37	41	43	42	40	29	33	30	26
23	18	18	15	12	10	13	15	21	25	22	32	25	23	21	26	32	28	37	39	21	18	18	13	12	21
24	12	9	7	6	6	6	11	12	12	16	20	17	18	12	16	16	31	28	25	24	17	14	8	6	15
25	9	6	5	4	3	5	5	10	12	15	19	19	19	20	20	29	25	36	24	26	38	62	62	46	22
26	28	13	7	7	7	6	8	15	18	19	19	M	M	M	M	M	M	16	13	12	13	11	13	13	13
27	11	6	4	3	2	3	4	10	12	9	11	10	8	8	9	7	11	13	11	9	8	8	7	5	8
28	4	3	2	1	1	1	3	5	6	5	4	7	6	5	7	8	10	11	11	13	8	5	5	4	6
29	2	1	0	0	0	0	1	3	5	4	6	7	6	6	7	9	10	16	16	15	16	9	7	5	6
30	4	6	4	4	3	3	4	4	6	9	9	7	8	11	9	8	8	6	4	3	2	1	1	2	5

MONTHLY STATISTICS:

GEOM	ARITH-----PERCENTILES-----							RANGE-----					STN GEOM	PERCENT	NO. OF TIMES	
MEAN	MEDIAN	MEAN	50	90	95	98	99	1-HR		24-HR			DEVIATION	VALID DATA	ABOVE LIMIT LEVEL	
12	14	16	14	32	36	43	49	0	-	62	3	-	29	2	99	0

- NOTES: 1. FLAGS FOR INVALID DATA :
- D: DYNAMIC CALIBRATION
 - T: TELEMETRY/DATALOGGR FAULT
 - M: MAINTENANCE OR ANALYZER FAULT
 - P: POWER FAILURE

THE HONGKONG ELECTRIC COMPANY, LTD.
AIR QUALITY DATA MONTHLY TIME SERIES REPORT

STATION : CHUNG HOM KOK ZONE SUBSTATION
POLLUTANT : SULPHUR DIOXIDE

MONTH: NOVEMBER

YEAR : 2024

UNIT : MICROGRAMS/CUBIC METER

DAY	1	2	3	4	5	6	7	8	9	10	11	12	13	14	15	16	17	18	19	20	21	22	23	24	MEAN	
1	3	3	3	3	3	3	3	3	3	3	3	3	3	2	2	2	3	2	2	2	2	2	2	2	5	3
2	2	2	2	2	2	2	2	2	2	2	2	2	2	2	2	2	2	2	2	2	2	2	2	2	7	2
3	3	3	3	3	3	2	2	2	2	2	2	2	2	2	2	2	2	2	2	2	2	2	2	2	6	2
4	3	2	2	2	3	3	3	3	2	2	2	3	3	3	3	3	3	3	3	3	3	2	2	2	7	3
5	3	2	2	2	2	3	3	4	4	3	3	3	3	3	3	3	3	3	3	3	3	3	2	2	7	3
6	3	2	3	3	3	3	3	3	3	3	3	3	3	3	3	3	3	3	3	2	2	2	2	2	7	3
7	3	3	3	3	3	3	3	3	4	3	3	3	3	3	3	3	3	3	3	3	2	2	2	2	7	3
8	3	5	4	4	3	3	3	3	3	3	3	3	3	3	2	2	2	3	3	3	3	3	3	3	6	3
9	3	2	3	3	4	4	4	4	3	4	4	4	4	3	3	3	3	3	3	2	2	2	2	2	6	3
10	3	2	2	2	2	2	2	2	2	2	2	2	2	2	2	3	3	3	2	2	2	2	2	2	6	2
11	3	4	4	3	4	3	3	3	3	3	3	3	3	2	2	2	2	2	2	2	2	2	2	2	7	3
12	3	3	3	3	3	3	4	4	4	4	4	4	4	3	3	4	3	3	3	3	3	3	3	3	7	4
13	4	3	3	3	3	3	3	3	2	3	3	2	2	2	2	2	2	2	2	2	2	2	2	2	7	3
14	3	2	2	2	2	2	2	2	2	2	2	2	2	2	2	2	2	2	2	2	2	2	2	2	5	2
15	3	2	2	2	2	2	2	2	2	2	2	2	2	2	2	2	2	2	2	2	2	2	2	2	7	2
16	3	3	2	3	3	3	3	2	2	2	2	2	2	2	2	3	3	3	5	4	3	2	2	2	6	3
17	3	2	2	1	2	2	2	2	2	2	2	2	2	2	2	2	2	2	3	2	2	2	2	2	7	2
18	3	3	3	2	2	2	2	2	2	2	2	2	2	2	2	2	2	2	2	2	2	2	2	2	6	2
19	3	3	3	3	3	2	2	2	2	2	2	2	2	2	2	2	2	2	2	2	2	2	2	1	6	2
20	2	2	2	2	1	1	1	1	1	2	2	2	2	2	2	2	2	1	2	2	2	2	2	2	6	2
21	3	2	2	2	2	2	2	2	2	2	2	2	2	2	2	2	2	2	2	2	2	1	2	2	6	2
22	2	2	2	2	2	2	2	2	2	2	2	2	2	2	1	2	2	2	2	2	2	2	2	2	5	2
23	2	2	2	2	2	2	2	2	2	2	2	2	2	2	2	2	2	2	2	2	2	2	2	2	6	2
24	3	3	2	2	2	2	2	2	2	3	3	2	2	2	2	2	2	2	2	2	2	2	2	2	6	2
25	3	2	2	2	2	2	2	2	2	2	2	2	2	2	2	2	2	2	2	2	2	2	2	2	6	2
26	3	2	2	2	2	2	2	2	2	2	2	2	2	2	2	2	2	2	2	2	2	2	2	2	5	2
27	2	2	2	2	2	2	2	2	2	2	2	2	4	2	2	2	2	2	2	2	2	2	2	2	7	2
28	3	3	2	2	2	2	2	2	2	2	2	2	2	2	2	2	2	2	3	3	3	3	3	3	7	3
29	3	3	3	2	2	2	2	2	2	2	3	2	2	2	2	M	3	3	3	3	3	2	2	2	7	3
30	3	3	3	2	2	3	3	3	4	4	3	3	3	3	3	3	3	3	3	3	3	3	3	3	6	3

MONTHLY STATISTICS:

GEOM	ARITH-----PERCENTILES-----							-----RANGE-----				STN GEOM	PERCENT	NO. OF TIMES		
MEAN	MEDIAN	MEAN	50	90	95	98	99	1-HR	24-HR	DEVIATION	VALID DATA	ABOVE	LIMIT	LEVEL		
2	2	3	2	3	4	6	7	1	-	7	2	-	4	1	100	0

NOTES:

1. FLAGS FOR INVALID DATA :
 - D: DYNAMIC CALIBRATION
 - T: TELEMETRY/DATALOGGR FAULT
 - M: MAINTENANCE OR ANALYZER FAULT
 - P: POWER FAILURE

THE HONGKONG ELECTRIC COMPANY, LTD.
AIR QUALITY DATA MONTHLY TIME SERIES REPORT

STATION : CHUNG HOM KOK ZONE SUBSTATION
POLLUTANT : NITROGEN DIOXIDE

MONTH: NOVEMBER

YEAR : 2024

UNIT : MICROGRAMS/CUBIC METER

DAY	1	2	3	4	5	6	7	8	9	10	11	12	13	14	15	16	17	18	19	20	21	22	23	24	MEAN
1	20	15	15	11	10	11	16	23	26	30	33	27	18	16	16	26	23	20	15	16	15	15	15	13	19
2	12	10	9	10	10	9	8	11	18	14	12	12	10	10	8	9	7	14	18	26	15	6	6	9	11
3	6	7	8	8	9	9	7	8	9	9	8	8	7	7	9	12	11	11	9	8	6	6	6	8	8
4	6	8	8	11	12	10	11	11	15	13	10	10	10	9	11	12	15	10	10	9	11	9	5	5	10
5	4	5	5	6	6	9	13	15	15	16	13	14	12	12	12	16	11	12	16	13	11	8	8	11	11
6	9	M	13	10	10	9	10	14	19	18	15	16	12	12	11	12	13	14	10	10	9	9	8	11	12
7	9	8	8	11	12	9	11	14	15	16	14	14	14	14	13	11	14	13	12	8	9	12	10	13	12
8	11	15	13	9	8	7	9	13	13	11	9	10	15	25	16	14	16	14	22	33	32	20	16	16	15
9	14	11	13	11	12	13	15	18	22	18	16	16	13	11	9	9	10	12	10	9	8	5	5	5	12
10	4	5	6	6	4	7	9	10	10	9	7	9	15	13	13	17	20	26	16	13	11	12	12	20	11
11	13	9	11	9	9	12	16	21	16	13	11	10	9	8	11	11	10	8	11	10	8	11	8	10	11
12	9	15	13	13	10	7	12	22	20	17	13	17	14	13	15	16	15	19	15	6	5	11	9	11	13
13	14	13	15	11	12	12	20	28	20	37	49	38	18	22	16	16	11	11	12	12	11	8	5	4	17
14	3	2	2	2	3	3	3	3	3	3	4	7	9	7	8	8	7	6	5	5	7	6	7	5	5
15	6	5	4	5	4	5	6	9	11	14	19	11	10	10	9	17	12	20	8	3	6	1	2	4	8
16	3	4	5	5	4	29	13	12	11	14	11	8	5	6	12	29	34	44	84	61	30	16	14	11	19
17	14	17	10	10	14	9	6	7	9	10	10	11	8	8	17	30	27	23	34	16	5	6	5	12	13
18	9	9	10	12	11	10	13	13	12	13	12	13	15	14	13	16	18	22	21	19	19	16	12	11	14
19	15	15	13	12	12	11	10	12	12	11	12	11	12	15	15	15	16	15	14	13	14	11	9	9	13
20	8	M	7	6	6	5	6	9	25	37	30	33	32	25	19	20	18	21	33	26	26	15	13	8	19
21	9	10	12	10	10	7	8	12	31	23	29	41	34	31	37	36	44	37	40	42	32	14	10	12	24
22	11	10	9	9	11	9	14	24	23	10	9	9	24	38	17	27	39	41	32	28	16	10	9	8	18
23	7	8	8	8	8	8	9	11	12	13	11	11	12	12	10	16	15	22	23	18	11	10	10	10	12
24	9	11	9	9	7	7	9	15	13	13	14	10	10	8	9	10	13	14	18	21	19	17	12	9	12
25	7	7	8	7	7	7	7	8	8	8	12	12	13	14	13	16	17	16	12	11	13	19	18	19	12
26	28	15	9	9	8	6	8	11	13	18	23	31	27	29	30	31	48	46	33	44	49	41	30	29	26
27	16	11	6	5	5	6	10	16	12	41	30	38	54	24	23	25	20	30	23	15	14	14	12	10	19
28	10	9	8	6	4	4	7	12	13	11	10	14	16	17	18	22	23	29	29	24	15	11	11	8	14
29	6	6	4	4	4	4	6	9	10	13	14	15	15	10	14	M	14	16	21	31	23	16	16	11	12
30	10	12	12	12	14	14	13	15	14	17	16	13	12	13	10	12	15	12	9	11	10	8	10	10	12

MONTHLY STATISTICS:

GEOM	ARITH-----PERCENTILES-----							-----RANGE-----				STN GEOM	PERCENT	NO. OF TIMES		
MEAN	MEDIAN	MEAN	50	90	95	98	99	1-HR	24-HR	DEVIATION	VALID DATA	ABOVE	LIMIT	LEVEL		
12	12	14	12	25	32	41	44	1	-	84	5	-	26	2	100	0

NOTES: 1. FLAGS FOR INVALID DATA :
D: DYNAMIC CALIBRATION
T: TELEMETRY/DATALOGGR FAULT
M: MAINTENANCE OR ANALYZER FAULT
P: POWER FAILURE

THE HONGKONG ELECTRIC COMPANY, LTD.
AIR QUALITY DATA MONTHLY TIME SERIES REPORT

STATION : VICTORIA ROAD SUBSTATION
POLLUTANT : SULPHUR DIOXIDE

MONTH: NOVEMBER

YEAR : 2024
UNIT : MICROGRAMS/CUBIC METER

DAY	1	2	3	4	5	6	7	8	9	10	11	12	13	14	15	16	17	18	19	20	21	22	23	24	MEAN
1	12	12	12	12	12	12	12	12	12	12	13	13	12	12	12	12	12	12	12	12	12	12	12	12	12
2	12	12	12	12	12	12	12	12	12	12	12	12	12	12	12	12	12	12	12	12	12	12	12	12	12
3	12	12	12	12	12	12	12	12	12	12	12	12	12	12	12	12	12	12	12	12	12	12	12	12	12
4	12	12	12	12	12	12	12	12	12	12	12	12	12	12	13	12	12	12	12	12	12	12	12	12	12
5	12	12	12	12	12	12	12	12	13	12	13	12	12	13	12	13	12	12	12	12	12	12	12	12	12
6	12	12	12	12	12	12	12	12	12	12	13	13	13	13	13	12	12	12	12	12	12	12	12	12	12
7	12	12	12	12	12	12	12	12	12	13	13	13	12	12	12	12	12	12	12	12	12	12	12	12	12
8	12	12	13	13	12	12	12	13	13	13	13	12	12	13	13	14	14	13	13	13	13	12	12	13	13
9	12	12	12	13	12	13	12	13	13	12	13	13	13	13	12	12	12	12	12	12	12	12	12	12	12
10	12	12	12	12	12	12	12	12	12	13	13	13	13	13	13	13	12	12	13	12	13	13	12	13	12
11	12	12	12	12	13	13	13	12	13	13	13	13	13	12	12	12	12	12	12	12	12	12	12	12	12
12	12	12	12	12	12	12	12	12	13	13	13	13	13	13	13	13	13	13	12	13	13	13	12	13	13
13	12	12	12	13	12	12	12	13	13	13	13	13	13	13	13	13	13	12	13	13	13	13	13	13	13
14	12	13	13	13	13	12	13	13	13	13	13	13	13	13	12	13	13	12	13	13	13	12	12	13	13
15	12	12	12	12	12	13	13	12	13	12	13	13	13	13	13	13	13	13	13	13	13	13	13	13	13
16	13	13	13	14	14	14	15	15	15	15	16	14	14	13	14	14	14	13	13	13	13	13	13	13	14
17	12	13	13	12	13	13	12	12	13	12	12	12	12	13	13	13	13	13	13	13	12	12	12	13	13
18	12	12	12	12	12	12	12	13	13	13	13	13	13	13	12	13	12	13	13	13	12	13	13	12	13
19	12	12	13	13	13	13	12	12	13	12	13	12	13	12	13	13	13	13	13	13	12	12	13	12	13
20	12	12	12	12	12	12	12	12	12	12	12	13	13	13	13	12	12	12	12	12	12	12	13	12	12
21	12	12	12	13	12	12	12	12	13	12	13	13	13	13	12	13	13	13	12	13	13	12	12	13	13
22	12	13	13	12	12	12	12	12	12	13	13	13	13	13	13	13	13	13	13	12	12	12	12	12	13
23	12	12	12	12	12	12	12	12	13	13	13	13	12	12	12	12	12	12	12	12	12	12	12	12	12
24	12	12	12	12	12	12	12	12	12	12	13	12	13	13	12	12	12	12	12	12	12	12	12	12	12
25	12	12	12	12	12	12	12	12	12	12	12	M	13	12	12	12	13	12	13	13	13	13	13	15	12
26	13	13	12	13	13	12	12	12	12	13	13	13	13	13	13	13	13	12	12	12	12	12	13	14	13
27	12	12	12	12	12	12	12	12	12	13	13	13	13	13	12	13	12	12	12	12	12	12	12	13	12
28	13	12	12	12	12	12	12	12	12	12	12	12	12	12	12	12	12	12	12	12	12	13	12	14	12
29	12	13	12	12	12	12	11	12	12	12	12	12	12	12	12	12	12	12	12	12	12	12	12	14	12
30	12	12	13	12	12	13	12	13	13	13	13	13	13	13	13	13	13	12	12	12	13	13	12	14	13

MONTHLY STATISTICS:

GEOM	ARITH-----PERCENTILES-----							-----RANGE-----				STN GEOM	PERCENT	NO. OF TIMES		
MEAN	MEDIAN	MEAN	50	90	95	98	99	1-HR		24-HR		DEVIATION	VALID DATA	ABOVE LIMIT LEVEL		
12	12	12	12	13	13	14	14	11	-	16	12	-	14	1	100	0

- NOTES: 1. FLAGS FOR INVALID DATA :
- D: DYNAMIC CALIBRATION
 - T: TELEMETRY/DATALOGGR FAULT
 - M: MAINTENANCE OR ANALYZER FAULT
 - P: POWER FAILURE

THE HONGKONG ELECTRIC COMPANY, LTD.
AIR QUALITY DATA MONTHLY TIME SERIES REPORT

STATION : VICTORIA ROAD SUBSTATION
POLLUTANT : NITROGEN DIOXIDE

MONTH: NOVEMBER

YEAR : 2024
UNIT : MICROGRAMS/CUBIC METER

DAY	1	2	3	4	5	6	7	8	9	10	11	12	13	14	15	16	17	18	19	20	21	22	23	24	MEAN
1	12	10	9	6	6	6	8	10	14	13	16	18	14	10	12	13	16	14	15	11	10	8	8	7	11
2	6	5	5	5	4	4	6	9	12	15	14	12	14	17	16	10	11	11	14	16	10	9	8	7	10
3	5	5	4	4	4	5	5	6	6	6	6	6	6	6	6	7	9	7	8	7	8	10	9	6	6
4	7	6	5	5	5	6	9	14	15	14	16	14	11	10	12	14	20	15	26	20	11	8	6	5	11
5	5	4	4	4	4	5	11	13	16	17	14	12	11	20	14	14	19	25	19	13	9	10	9	8	12
6	7	M	7	5	7	7	8	13	13	14	15	17	16	20	12	13	12	16	15	9	7	7	7	6	11
7	6	5	6	7	8	6	7	9	11	13	14	11	7	6	8	9	13	11	9	6	7	9	11	10	9
8	8	7	5	5	5	5	7	15	18	15	14	12	11	13	19	33	30	23	20	15	23	17	14	17	15
9	10	8	6	6	6	5	6	10	10	9	8	9	9	9	10	8	10	10	9	8	7	5	5	5	8
10	3	3	3	3	3	3	5	4	6	7	6	8	9	8	9	9	10	13	13	12	11	9	8	7	7
11	7	11	8	5	5	9	13	11	13	11	11	9	7	10	12	15	18	20	14	9	8	8	10	9	11
12	7	5	5	4	4	4	11	18	19	19	20	28	17	18	14	15	16	18	15	18	12	16	17	9	14
13	9	6	5	5	5	9	17	22	19	16	17	17	13	14	11	11	12	11	11	10	5	5	4	3	11
14	2	2	2	2	2	2	2	2	2	2	2	3	4	4	5	5	5	5	4	4	3	3	3	4	3
15	3	2	2	2	2	2	4	10	13	11	12	13	11	16	14	14	19	16	17	11	11	11	13	12	10
16	9	10	17	19	18	18	19	18	18	24	27	24	24	16	18	15	23	21	20	31	17	13	9	8	18
17	6	4	3	2	3	4	6	3	4	4	5	6	6	6	13	15	14	14	16	12	5	4	5	6	7
18	5	4	4	4	4	4	5	9	9	8	8	8	9	8	9	9	15	14	15	12	11	8	7	7	8
19	7	7	6	4	4	4	6	6	7	8	8	9	8	8	10	10	11	11	12	10	9	8	7	8	8
20	6	M	4	2	2	4	4	6	7	8	8	9	8	8	9	11	12	10	10	10	10	10	10	8	8
21	7	6	4	4	4	3	4	7	9	10	11	11	11	12	14	14	15	17	15	16	13	10	10	8	10
22	7	6	7	8	6	6	7	10	12	13	14	12	13	14	15	15	17	16	16	16	15	11	10	11	12
23	10	10	9	7	6	6	8	9	10	12	13	13	10	11	14	16	18	15	14	13	8	8	7	7	11
24	6	5	4	4	4	4	5	6	6	7	7	6	7	6	6	6	8	11	8	9	8	6	6	5	6
25	4	4	3	3	3	3	4	6	9	9	9	M	10	9	9	11	18	16	16	25	23	21	22	17	11
26	14	6	4	3	3	3	4	7	8	9	8	11	10	13	15	14	15	18	15	13	14	15	14	14	10
27	12	10	7	5	5	6	10	14	14	13	15	14	16	14	13	13	14	16	14	14	10	9	9	8	11
28	7	5	4	4	3	3	4	10	9	7	7	9	10	8	9	12	14	14	14	14	9	7	5	5	8
29	4	3	2	2	2	2	3	6	8	9	7	8	8	11	11	10	12	17	18	19	19	19	12	9	9
30	8	7	7	6	6	6	8	15	12	13	12	12	16	18	10	10	12	12	20	13	12	9	7	7	11

MONTHLY STATISTICS:

GEOM	ARITH-----PERCENTILES-----							-----RANGE-----					STN GEOM	PERCENT	NO. OF TIMES	
MEAN	MEDIAN	MEAN	50	90	95	98	99	1-HR		24-HR			DEVIATION	VALID DATA	ABOVE LIMIT LEVEL	
9	9	10	9	17	19	23	25	2	-	33	3	-	18	2	100	0

- NOTES: 1. FLAGS FOR INVALID DATA :
D: DYNAMIC CALIBRATION
T: TELEMETRY/DATALOGGR FAULT
M: MAINTENANCE OR ANALYZER FAULT
P: POWER FAILURE
2. BRACKETED READINGS EXCEED 1-HR OBJECTIVE 200

THE HONGKONG ELECTRIC COMPANY, LTD.
AIR QUALITY DATA MONTHLY TIME SERIES REPORT
MONTH: NOVEMBER

STATION : AP LEI CHAU
POLLUTANT : SULPHUR DIOXIDE

YEAR : 2024
UNIT : MICROGRAMS/CUBIC METER

DAY	1	2	3	4	5	6	7	8	9	10	11	12	13	14	15	16	17	18	19	20	21	22	23	24	MEAN
1	8	7	8	7	7	8	8	8	8	8	8	9	8	7	8	7	7	7	7	7	7	7	7	7	8
2	7	7	7	7	7	7	7	7	7	7	8	8	7	7	7	7	7	7	7	7	7	7	7	7	7
3	7	7	7	7	7	7	7	7	7	7	7	8	7	8	8	7	7	7	7	7	7	7	7	7	7
4	7	7	7	7	7	7	7	7	7	7	8	7	8	8	8	8	8	8	7	7	7	7	7	7	7
5	7	7	7	7	7	7	7	8	9	9	8	8	8	8	8	8	8	7	8	7	7	7	7	7	8
6	7	7	7	7	8	8	8	8	8	9	8	8	8	8	8	8	7	8	7	7	7	7	7	7	8
7	7	7	7	7	8	8	8	8	9	8	9	8	8	8	8	8	M	7	8	7	7	7	7	11	8
8	8	9	10	10	9	9	9	9	9	9	8	8	8	9	9	12	11	9	9	10	9	9	8	12	9
9	9	8	8	8	8	8	9	9	8	9	10	9	9	8	8	8	8	8	8	8	7	7	7	11	8
10	8	7	7	7	7	7	7	7	7	7	7	7	7	7	8	8	8	8	8	7	8	7	7	12	8
11	9	8	8	8	8	8	8	8	8	8	8	8	8	8	8	7	8	7	7	7	7	7	7	10	8
12	8	8	8	8	8	8	8	8	10	13	12	11	10	11	10	9	8	8	8	8	8	8	8	11	9
13	9	8	8	8	8	8	9	9	8	8	9	8	8	8	7	8	8	7	8	8	7	7	7	10	8
14	8	8	7	7	7	7	7	7	7	7	7	7	7	7	7	7	7	7	7	7	7	7	7	10	7
15	8	8	7	7	7	7	7	7	7	7	7	7	7	7	7	7	7	7	7	7	7	7	7	11	7
16	8	9	8	8	8	11	9	9	8	11	9	8	10	15	11	11	11	13	13	11	8	8	7	11	10
17	8	8	8	7	7	8	7	7	7	7	7	7	7	8	10	10	8	8	9	8	7	7	7	11	8
18	8	8	8	8	8	8	8	8	8	8	8	7	8	8	8	8	8	7	8	8	8	7	7	11	8
19	8	8	8	8	8	8	7	7	7	7	7	7	7	7	7	7	7	7	7	7	7	7	7	11	7
20	8	8	7	7	7	7	7	7	7	7	7	7	7	7	7	7	7	7	7	7	7	7	7	11	7
21	8	8	7	7	7	7	7	7	7	7	7	7	8	8	8	8	7	7	7	7	7	7	7	9	7
22	8	7	7	7	7	7	7	7	7	8	8	8	9	9	8	8	8	7	7	7	7	7	7	10	8
23	8	7	7	7	7	7	7	7	8	8	8	8	7	7	7	7	7	7	7	7	7	7	7	10	7
24	8	8	8	7	7	7	7	8	7	8	8	8	8	8	7	7	7	7	7	7	7	7	7	11	8
25	8	8	8	7	7	7	7	7	7	7	8	7	7	7	7	7	7	7	7	7	8	9	9	11	8
26	9	8	7	7	7	7	7	7	7	8	8	9	8	8	10	9	7	7	7	7	7	7	7	9	8
27	8	8	8	7	8	8	7	8	8	8	9	9	9	8	8	8	8	8	8	8	8	8	8	10	8
28	9	8	8	8	8	8	8	8	8	8	7	7	8	8	8	8	8	8	8	8	8	8	8	10	8
29	9	8	8	8	8	8	8	8	8	8	8	8	8	8	8	8	8	8	8	8	8	8	8	9	8
30	8	8	8	8	8	8	9	9	9	9	9	9	9	9	8	8	8	8	8	8	8	8	8	10	8

MONTHLY STATISTICS:

GEOM	ARITH-----PERCENTILES-----							-----RANGE-----				STN GEOM	PERCENT	NO. OF TIMES		
MEAN	MEDIAN	MEAN	50	90	95	98	99	1-HR		24-HR	DEVIATION	VALID DATA	ABOVE LIMIT LEVEL			
8	8	8	8	9	10	11	12	7	-	15	7	-	10	1	100	0

- NOTES: 1. FLAGS FOR INVALID DATA :
- D: DYNAMIC CALIBRATION
 - T: TELEMETRY/DATALOGGR FAULT
 - M: MAINTENANCE OR ANALYZER FAULT
 - P: POWER FAILURE

THE HONGKONG ELECTRIC COMPANY, LTD.
AIR QUALITY DATA MONTHLY TIME SERIES REPORT

STATION : AP LEI CHAU
POLLUTANT : NITROGEN DIOXIDE

MONTH: NOVEMBER

YEAR : 2024
UNIT : MICROGRAMS/CUBIC METER

DAY	1	2	3	4	5	6	7	8	9	10	11	12	13	14	15	16	17	18	19	20	21	22	23	24	MEAN
1	14	13	13	11	9	10	13	18	20	22	29	31	26	19	23	20	20	23	22	23	18	14	13	11	18
2	11	10	9	7	7	9	12	15	20	28	43	34	30	25	14	9	8	12	26	30	16	14	10	6	17
3	6	6	6	6	6	8	9	8	9	8	7	7	6	5	6	5	7	6	6	5	7	10	9	4	7
4	5	4	5	4	6	7	9	12	13	10	7	7	7	6	7	9	13	13	16	19	11	7	5	3	9
5	2	3	3	4	4	8	14	20	23	19	16	18	10	14	14	10	9	14	33	19	9	7	6	9	12
6	10	10	9	8	9	10	12	23	33	32	20	14	18	13	7	6	6	8	8	9	8	5	4	6	12
7	5	5	7	9	10	7	10	14	18	18	15	14	18	17	11	12	M	5	5	6	8	15	16	21	12
8	20	24	18	16	13	19	28	35	27	23	19	17	25	31	30	30	21	16	30	35	44	29	19	15	24
9	12	12	11	9	9	10	12	16	18	17	17	16	11	8	7	8	9	11	10	7	7	4	3	4	10
10	3	4	3	2	2	4	5	5	7	6	5	8	9	8	11	13	14	16	17	18	12	13	13	14	9
11	14	15	14	7	8	13	10	12	15	8	7	6	6	5	7	7	8	10	8	6	6	6	7	16	9
12	12	M	9	7	7	8	13	22	38	56	56	31	27	48	36	32	25	23	12	10	16	15	10	12	23
13	10	7	7	8	15	22	46	36	35	32	32	31	25	23	22	21	25	22	23	13	10	8	7	3	20
14	2	1	1	1	1	1	2	2	2	1	2	3	4	4	6	4	7	5	4	5	4	5	4	4	3
15	4	4	2	1	1	2	6	16	24	20	12	13	15	17	16	20	18	18	14	10	8	12	5	30	12
16	10	21	17	15	26	48	17	19	18	35	20	9	18	43	29	41	52	67	74	50	16	10	6	6	28
17	6	8	6	5	8	7	6	5	6	7	7	10	12	20	34	33	30	26	35	10	5	7	6	10	13
18	8	8	8	9	8	10	16	19	17	17	14	18	16	14	15	17	18	24	21	20	17	14	11	14	15
19	14	14	14	11	10	11	15	18	20	20	18	21	25	22	23	26	27	31	27	31	27	22	18	20	20
20	15	10	8	7	6	8	10	17	23	24	24	24	22	24	28	29	30	33	35	26	31	28	25	27	21
21	19	14	12	10	10	8	12	17	26	27	27	25	29	29	33	29	33	38	40	36	28	19	16	13	23
22	14	15	13	10	13	12	15	19	28	31	32	28	27	26	28	29	37	30	34	34	33	25	26	19	24
23	14	14	15	13	14	16	18	19	24	23	23	20	14	11	12	13	16	23	29	17	14	16	11	7	17
24	7	8	7	6	6	6	9	12	13	14	12	11	10	7	7	7	13	18	17	17	16	16	9	6	11
25	5	5	6	5	4	5	6	10	10	10	14	13	13	18	15	21	25	27	27	31	58	63	54	56	21
26	35	M	9	10	8	7	10	12	13	16	20	21	21	28	40	33	33	39	46	41	34	35	36	35	25
27	32	19	16	13	9	12	23	27	25	32	35	34	30	25	23	19	25	27	28	26	22	24	20	17	23
28	15	12	11	8	6	7	11	17	19	15	14	16	16	20	19	16	24	32	31	32	22	14	13	10	17
29	8	5	3	3	4	5	8	11	13	17	19	19	17	16	17	21	28	36	40	54	49	25	24	28	20
30	29	20	18	19	16	12	13	18	16	17	12	16	12	12	9	9	10	10	15	20	19	20	22	16	16

MONTHLY STATISTICS:

GEOM	ARITH-----PERCENTILES-----							-----RANGE-----					STN GEOM	PERCENT	NO. OF TIMES	
MEAN	MEDIAN	MEAN	50	90	95	98	99	1-HR			24-HR	DEVIATION	VALID DATA	ABOVE	LIMIT LEVEL	
13	14	16	14	31	35	46	54	1	-	74	3	-	28	2	100	0

- NOTES: 1. FLAGS FOR INVALID DATA :
- D: DYNAMIC CALIBRATION
 - T: TELEMETRY/DATALOGGR FAULT
 - M: MAINTENANCE OR ANALYZER FAULT
 - P: POWER FAILURE

THE HONGKONG ELECTRIC COMPANY, LTD.
AIR QUALITY DATA MONTHLY TIME SERIES REPORT
MONTH: NOVEMBER

STATION : CHEUNG CHAU
POLLUTANT : SULPHUR DIOXIDE

YEAR : 2024
UNIT : MICROGRAMS/CUBIC METER

DAY	1	2	3	4	5	6	7	8	9	10	11	12	13	14	15	16	17	18	19	20	21	22	23	24	MEAN
1	0	0	0	0	0	0	0	0	0	0	0	0	0	0	0	0	0	0	0	0	0	0	0	0	0
2	0	0	0	0	0	0	0	0	0	0	0	0	0	0	0	0	1	0	0	1	1	0	0	0	0
3	0	0	0	0	0	0	0	0	0	0	0	0	0	0	0	0	0	0	0	0	1	0	0	0	0
4	0	0	0	0	0	0	0	0	0	0	0	0	0	0	0	0	0	0	0	0	0	0	0	0	0
5	0	0	0	0	0	0	0	0	1	0	0	0	0	0	0	0	0	0	0	0	0	0	0	1	0
6	0	0	0	0	0	0	0	0	0	0	0	0	0	0	0	0	0	0	0	0	1	1	1	4	0
7	5	5	2	0	0	0	0	0	0	0	0	0	0	0	0	0	0	0	0	0	10	11	0	0	1
8	0	0	0	0	0	0	0	0	0	0	0	0	0	0	0	1	0	0	0	0	0	0	0	0	0
9	0	2	0	0	0	0	1	1	1	0	1	1	0	0	0	0	0	0	0	2	0	0	0	0	0
10	0	0	0	0	0	0	0	0	0	0	0	0	0	0	0	0	0	0	0	0	0	0	0	1	0
11	0	0	0	0	0	0	0	0	0	0	1	0	0	0	0	0	0	0	0	0	0	0	0	0	0
12	0	0	0	0	0	0	0	1	2	1	1	1	1	1	1	0	0	0	0	0	0	0	0	0	0
13	0	0	0	0	0	0	0	1	1	0	0	0	0	0	0	0	0	0	0	0	0	0	0	0	0
14	0	0	0	0	0	0	0	0	0	0	1	1	0	0	0	0	0	0	0	0	0	0	0	0	0
15	0	0	0	0	0	0	0	0	0	0	0	0	0	0	0	0	0	0	0	0	0	0	0	1	0
16	0	0	0	0	0	0	0	1	1	2	0	0	0	0	0	0	0	0	0	0	0	0	0	0	0
17	0	0	0	0	0	0	0	0	0	0	0	0	0	0	0	0	0	0	0	0	0	0	0	0	0
18	0	0	0	0	0	0	0	0	0	0	0	0	0	0	0	0	0	0	0	0	0	0	41	0	2
19	0	0	0	0	0	0	0	0	0	0	0	0	0	0	0	0	0	0	0	0	0	0	0	0	0
20	0	0	0	0	0	0	0	0	0	0	0	0	0	0	0	0	0	0	0	0	0	0	0	0	0
21	0	0	0	0	0	0	0	0	0	0	0	0	0	0	0	0	0	0	0	0	0	0	0	1	0
22	0	0	0	0	0	0	0	0	0	0	0	0	0	0	0	M	0	0	0	0	0	0	0	0	0
23	0	0	0	0	0	0	0	0	0	0	0	0	0	0	0	0	0	0	0	0	0	0	0	0	0
24	0	0	0	0	0	0	0	0	0	0	0	0	0	0	0	0	0	0	0	0	0	0	0	0	0
25	0	0	0	0	0	0	0	0	0	0	0	0	0	0	0	0	0	0	0	0	0	0	0	0	0
26	0	0	0	0	0	0	0	0	0	0	0	0	0	0	0	0	0	0	0	0	0	0	0	0	0
27	0	0	0	0	0	0	0	0	0	0	0	0	0	0	0	0	0	0	0	0	0	0	0	0	0
28	0	0	0	0	0	0	0	0	0	0	0	0	0	0	0	0	0	0	0	0	0	0	0	0	0
29	0	0	0	0	0	0	0	0	0	0	0	0	0	0	0	0	0	0	0	0	0	0	0	0	0
30	0	0	0	0	0	0	0	0	0	0	1	1	0	0	0	0	0	0	0	0	0	0	0	2	0

MONTHLY STATISTICS:

ARITH-----PERCENTILES-----RANGE-----													STN GEOM	PERCENT	NO. OF TIMES	
MEAN	MEDIAN	MEAN	50	90	95	98	99	1-HR		24-HR		DEVIATION	VALID DATA	ABOVE LIMIT LEVEL		
1	0	0	0	0	1	1	2	0	-	41	0	-	2	2	100	0

- NOTES: 1. FLAGS FOR INVALID DATA :
- D: DYNAMIC CALIBRATION
 - T: TELEMETRY/DATALOGGR FAULT
 - M: MAINTENANCE OR ANALYZER FAULT
 - P: POWER FAILURE

THE HONGKONG ELECTRIC COMPANY, LTD.
AIR QUALITY DATA MONTHLY TIME SERIES REPORT
MONTH: NOVEMBER

STATION : CHEUNG CHAU
POLLUTANT : NITROGEN DIOXIDE

YEAR : 2024
UNIT : MICROGRAMS/CUBIC METER

DAY	1	2	3	4	5	6	7	8	9	10	11	12	13	14	15	16	17	18	19	20	21	22	23	24	MEAN
1	28	21	17	14	13	15	23	34	35	34	34	33	40	36	33	35	41	48	44	57	28	18	17	13	30
2	14	14	13	11	14	15	16	20	20	25	28	27	37	37	38	40	51	69	76	78	81	62	53	22	36
3	39	35	29	29	44	57	52	43	32	16	20	25	17	12	7	7	7	10	10	8	14	13	17	13	23
4	9	15	11	10	25	48	48	48	41	33	11	9	9	8	9	12	18	18	17	14	15	16	12	14	20
5	7	20	29	26	21	27	35	43	41	30	35	40	42	53	24	18	20	21	16	44	46	38	36	15	30
6	29	M	20	21	16	22	29	33	36	34	38	38	38	27	12	12	14	13	13	12	14	14	11	29	23
7	18	17	16	21	23	30	33	33	41	40	38	35	23	29	25	29	15	10	9	7	19	22	56	54	27
8	41	33	22	20	19	28	30	41	40	43	48	45	42	39	37	24	19	18	22	25	63	65	66	62	37
9	51	23	16	44	54	63	63	54	57	45	38	49	35	38	28	14	36	26	28	18	14	10	9	8	34
10	7	6	10	21	12	26	41	22	34	43	31	29	30	39	40	37	52	55	30	54	45	18	16	84	33
11	73	56	43	32	32	34	47	53	22	24	16	8	8	11	8	9	9	10	7	10	10	16	10	12	23
12	22	16	23	79	52	85	67	79	75	73	66	56	35	28	25	24	21	21	28	26	20	67	35	18	43
13	21	22	16	50	66	73	62	73	62	64	58	62	66	57	47	41	36	31	34	46	37	31	21	26	46
14	24	14	5	5	5	5	4	4	5	5	11	18	15	8	13	11	21	25	17	18	11	16	14	13	12
15	15	12	8	4	5	5	14	32	43	46	36	44	28	34	36	50	55	60	35	10	38	59	61	57	33
16	51	52	43	38	47	52	50	51	51	49	21	17	13	10	17	16	13	21	32	29	33	20	17	18	32
17	14	17	18	10	11	12	8	8	8	13	16	17	20	27	30	34	48	57	72	49	13	13	16	17	23
18	17	33	36	40	43	35	27	30	27	25	29	36	23	33	30	38	46	51	56	56	54	37	20	40	36
19	44	35	36	29	26	22	23	28	27	29	27	25	27	33	31	30	33	36	38	41	39	32	33	26	31
20	25	M	20	M	19	25	19	32	29	33	29	28	25	22	23	26	29	27	27	29	25	25	20	21	25
21	17	14	15	14	13	15	16	20	31	31	26	24	30	32	34	29	37	40	32	25	23	21	20	22	24
22	18	15	16	17	13	14	17	20	22	22	30	29	37	41	47	M	53	50	52	39	33	28	22	18	28
23	19	23	20	22	21	22	21	25	27	29	32	37	42	46	60	65	31	53	31	31	29	56	49	34	34
24	55	27	23	31	26	33	36	38	29	30	30	33	35	32	24	33	40	64	65	60	24	30	25	35	
25	12	12	15	16	9	10	11	14	22	36	39	50	46	52	50	59	75	75	73	63	66	80	73	53	42
26	57	54	34	30	24	20	15	17	20	20	23	30	36	42	49	51	54	54	52	52	48	36	33	23	36
27	24	19	18	18	20	22	30	27	27	37	32	33	39	37	38	26	28	34	27	28	26	26	24	27	28
28	29	24	18	19	23	22	24	29	37	23	27	24	24	27	39	39	75	64	51	45	37	36	33	21	33
29	20	14	12	8	11	18	18	24	26	23	22	23	28	33	34	32	14	23	62	73	71	87	82	61	34
30	60	56	53	48	52	58	56	74	77	69	59	45	37	27	14	12	15	19	16	14	13	15	16	15	38

MONTHLY STATISTICS:

GEOM	ARITH-----PERCENTILES-----										RANGE-----		STN GEOM	PERCENT	NO. OF TIMES	
MEAN	MEDIAN	MEAN	50	90	95	98	99	1-HR		24-HR		DEVIATION	VALID DATA	ABOVE	LIMIT	LEVEL
26	28	31	28	56	65	75	79	4	-	87	12	-	46	2	99	0

- NOTES: 1. FLAGS FOR INVALID DATA :
- D: DYNAMIC CALIBRATION
 - T: TELEMETRY/DATALOGGR FAULT
 - M: MAINTENANCE OR ANALYZER FAULT
 - P: POWER FAILURE

THE HONGKONG ELECTRIC COMPANY, LTD.
AIR QUALITY DATA MONTHLY TIME SERIES REPORT
MONTH: DECEMBER

STATION : VICTORIA PEAK
POLLUTANT : SULPHUR DIOXIDE

YEAR : 2024
UNIT : MICROGRAMS/CUBIC METER

DAY	1	2	3	4	5	6	7	8	9	10	11	12	13	14	15	16	17	18	19	20	21	22	23	24	MEAN
1	3	3	3	3	3	3	2	2	3	4	3	4	4	5	5	5	5	4	5	5	4	4	4	4	4
2	4	4	4	4	4	3	4	5	5	4	5	5	5	6	6	6	5	4	4	4	4	4	17	4	5
3	3	3	3	3	2	3	3	3	2	3	3	3	3	3	4	4	4	3	3	3	3	2	3	4	3
4	3	3	3	3	3	3	3	3	3	3	4	3	3	4	5	5	4	3	3	3	3	3	3	3	3
5	3	3	3	3	3	3	3	3	3	3	3	4	4	4	4	4	4	4	3	4	4	4	4	4	4
6	3	4	3	4	4	4	4	4	4	4	4	4	5	5	4	5	5	5	4	4	4	4	4	12	4
7	4	4	4	4	4	4	4	4	4	4	4	4	4	4	5	5	4	4	4	4	4	3	3	3	4
8	3	3	4	3	3	3	2	3	2	3	3	3	4	3	4	4	3	4	4	4	4	4	4	4	3
9	4	4	4	4	4	4	3	4	3	4	4	4	5	5	5	5	5	4	4	4	4	4	15	5	5
10	5	5	5	5	5	6	5	5	5	5	6	6	6	7	7	7	6	7	6	7	6	5	5	6	6
11	5	5	6	6	6	6	6	6	6	6	6	6	6	6	8	7	8	6	6	6	7	6	6	6	6
12	6	6	6	6	6	5	5	5	5	5	5	5	6	6	6	7	6	6	6	6	6	6	6	6	6
13	6	6	6	6	6	6	5	5	5	6	6	6	6	6	7	7	6	6	6	6	6	6	5	6	6
14	4	4	5	5	5	6	6	6	6	7	6	5	6	6	6	7	6	6	6	6	5	6	6	6	5
15	5	6	6	7	7	7	7	7	7	8	8	6	7	7	7	8	8	7	7	6	7	6	6	6	7
16	6	6	6	6	7	7	6	6	7	6	8	8	8	8	9	9	9	9	8	7	8	7	7	7	7
17	7	7	7	7	7	6	7	7	7	8	9	10	10	10	10	11	11	11	10	9	8	8	9	8	8
18	8	8	8	8	8	8	9	9	9	10	10	10	10	10	10	10	9	9	9	9	10	9	9	M	9
19	10	9	8	8	8	8	8	8	9	9	8	11	11	9	10	10	11	10	10	9	9	9	9	9	9
20	9	9	9	10	10	10	10	11	12	12	13	12	12	10	13	13	13	12	12	11	10	10	10	10	11
21	9	9	10	10	10	10	10	10	11	11	11	11	10	10	11	11	11	10	10	10	9	9	9	9	7
22	9	9	9	10	10	10	10	10	11	11	12	11	11	11	10	11	11	12	11	10	9	9	9	8	9
23	9	10	9	9	9	9	10	10	11	11	10	10	10	11	11	11	11	10	10	10	10	10	10	10	10
24	10	9	11	10	10	10	10	10	10	9	10	10	10	10	10	10	10	9	10	10	10	10	9	9	10
25	8	9	9	8	8	8	8	8	8	8	8	8	9	9	10	10	10	9	9	8	8	8	8	8	9
26	8	8	8	8	9	8	8	8	8	8	8	9	9	9	10	10	11	10	10	9	9	9	8	9	9
27	9	9	9	8	8	8	8	8	6	7	8	9	9	10	9	10	10	10	9	9	8	9	8	10	9
28	8	10	10	10	10	10	10	9	10	10	10	9	9	10	11	12	12	12	12	11	10	10	10	10	10
29	10	11	11	12	11	11	12	12	12	12	12	12	12	12	12	14	13	12	11	9	10	10	10	10	11
30	10	10	11	11	11	11	13	12	12	12	11	11	11	12	13	13	13	15	14	13	12	11	11	10	12
31	11	12	13	13	13	13	12	12	12	12	12	13	13	14	14	14	14	13	13	14	14	14	13	11	13

MONTHLY STATISTICS:

GEOM	ARITH-----PERCENTILES-----								-----RANGE-----				STN GEOM	PERCENT	NO. OF TIMES	
MEAN	MEDIAN	MEAN	50	90	95	98	99	1-HR	24-HR	DEVIATION	VALID DATA	ABOVE	LIMIT	LEVEL		
7	7	7	7	11	12	13	14	2	-	17	3	-	13	2	100	0

- NOTES: 1. FLAGS FOR INVALID DATA :
- D: DYNAMIC CALIBRATION
 - T: TELEMETRY/DATALOGGR FAULT
 - M: MAINTENANCE OR ANALYZER FAULT
 - P: POWER FAILURE

THE HONGKONG ELECTRIC COMPANY, LTD.
AIR QUALITY DATA MONTHLY TIME SERIES REPORT
MONTH: DECEMBER

STATION : VICTORIA PEAK
POLLUTANT : NITROGEN DIOXIDE

YEAR : 2024
UNIT : MICROGRAMS/CUBIC METER

DAY	1	2	3	4	5	6	7	8	9	10	11	12	13	14	15	16	17	18	19	20	21	22	23	24	MEAN
1	2	3	6	5	3	2	2	2	3	4	6	5	4	4	6	6	7	7	8	8	3	2	2	2	4
2	1	6	1	1	0	1	1	2	5	14	11	8	7	9	9	10	16	19	4	4	2	2	4	2	6
3	1	1	1	1	1	2	3	4	6	8	5	5	5	7	8	7	12	6	3	4	3	3	3	1	4
4	1	M	0	0	0	0	1	3	3	3	3	1	2	3	6	6	6	2	3	1	1	1	1	0	2
5	0	0	0	0	0	0	1	1	3	4	6	7	6	5	7	9	10	18	30	36	37	14	7	2	8
6	2	1	1	1	2	2	2	4	8	8	9	7	10	8	10	12	18	20	14	16	15	9	8	9	8
7	7	5	4	4	3	3	8	12	14	13	11	12	10	10	10	11	16	17	17	12	11	8	8	7	10
8	6	3	3	2	2	3	3	4	4	5	6	5	4	3	4	4	7	11	8	7	7	7	5	3	5
9	3	3	3	3	2	4	5	5	7	10	11	10	7	7	7	8	9	10	3	5	6	3	5	4	6
10	3	3	3	3	2	2	2	5	4	4	5	6	7	6	5	3	7	6	5	3	3	2	3	3	4
11	3	1	1	2	3	5	8	14	12	13	9	6	6	8	17	16	20	25	41	44	25	14	14	12	13
12	11	8	8	5	4	4	5	9	9	11	8	5	6	6	5	9	14	16	17	14	14	13	10	8	9
13	10	8	7	5	6	3	5	9	12	10	13	9	8	7	11	10	13	14	11	9	10	11	10	8	9
14	5	4	3	2	2	2	4	6	9	8	8	10	9	9	10	9	9	14	14	11	11	9	8	8	8
15	7	5	5	5	4	3	5	9	8	12	11	10	10	9	8	13	18	17	16	14	13	11	11	10	10
16	8	5	3	3	3	3	7	9	17	17	16	16	16	13	14	21	24	24	20	19	15	9	10	7	12
17	7	11	9	6	5	6	7	9	10	11	14	17	17	15	17	18	19	14	21	23	29	28	17	11	14
18	9	M	6	4	5	6	7	13	15	15	12	10	10	11	9	10	15	17	14	11	11	10	11	M	11
19	6	5	3	3	2	2	4	10	14	15	10	8	9	9	12	13	15	16	15	13	11	10	9	9	9
20	6	4	4	5	4	4	5	10	11	16	16	13	10	12	17	18	21	23	28	26	17	12	6	7	12
21	13	16	10	9	6	6	6	10	11	8	11	11	12	11	12	12	12	13	14	11	8	8	10	9	10
22	6	5	3	2	3	4	5	8	9	11	8	5	5	6	6	7	9	8	10	10	10	9	9	7	7
23	6	6	5	4	4	4	6	8	13	13	11	11	13	13	20	22	26	23	17	10	10	9	9	9	11
24	10	7	5	6	5	5	6	11	15	14	9	8	6	6	10	10	11	12	15	12	11	10	11	8	9
25	6	5	4	4	4	5	6	10	11	11	9	9	6	6	11	10	11	15	20	7	10	6	4	4	8
26	4	5	5	6	6	6	9	12	10	12	8	8	6	8	19	18	30	26	22	24	23	14	13	11	13
27	8	5	3	3	3	3	4	5	8	12	11	9	8	8	11	12	13	23	37	30	18	12	12	9	11
28	9	8	6	5	5	5	5	8	9	10	10	10	10	10	11	13	16	16	16	16	11	12	9	8	10
29	8	6	6	5	4	4	6	7	6	7	6	6	7	5	7	8	8	10	8	7	7	5	5	5	6
30	5	4	3	3	3	4	2	2	6	11	20	30	24	22	17	18	22	28	24	28	15	12	9	7	13
31	6	8	11	9	8	7	7	9	13	15	16	14	12	14	17	18	16	22	32	50	45	29	8	6	16

MONTHLY STATISTICS:

GEOM	ARITH-----PERCENTILES-----							-----RANGE-----				STN GEOM	PERCENT	NO. OF TIMES		
MEAN	MEDIAN	MEAN	50	90	95	98	99	1-HR	24-HR	DEVIATION	VALID DATA	ABOVE	LIMIT	LEVEL		
7	8	9	8	17	22	28	31	0	-	50	2	-	16	2	100	0

- NOTES: 1. FLAGS FOR INVALID DATA :
- D: DYNAMIC CALIBRATION
 - T: TELEMETRY/DATALOGGR FAULT
 - M: MAINTENANCE OR ANALYZER FAULT
 - P: POWER FAILURE

THE HONGKONG ELECTRIC COMPANY, LTD.
AIR QUALITY DATA MONTHLY TIME SERIES REPORT

STATION : CHUNG HOM KOK ZONE SUBSTATION
POLLUTANT : SULPHUR DIOXIDE

MONTH: DECEMBER

YEAR : 2024

UNIT : MICROGRAMS/CUBIC METER

DAY	1	2	3	4	5	6	7	8	9	10	11	12	13	14	15	16	17	18	19	20	21	22	23	24	MEAN	
1	3	3	3	3	2	2	2	2	3	4	3	4	4	3	3	3	4	4	4	3	3	3	3	3	7	3
2	3	4	3	3	2	3	3	4	4	5	4	4	4	4	4	3	3	3	3	3	3	3	3	3	5	3
3	3	3	2	2	2	3	3	3	3	3	2	2	2	2	2	2	2	2	3	3	3	2	2	2	6	3
4	2	2	3	2	2	2	2	2	3	3	3	3	3	2	2	2	2	1	2	2	2	2	2	2	5	2
5	2	1	2	2	2	2	2	2	2	2	3	3	3	3	2	2	2	2	2	2	2	2	2	2	6	2
6	3	2	2	2	2	3	3	2	2	2	2	2	2	2	3	4	4	5	4	3	3	2	3	7	3	
7	3	3	3	3	3	3	3	3	2	2	1	2	2	3	4	3	2	2	2	2	2	2	2	2	4	3
8	2	2	1	1	1	1	2	2	2	2	2	2	2	1	1	1	2	2	2	2	2	2	2	2	6	2
9	2	2	2	2	2	2	2	1	2	2	2	3	2	2	2	1	1	2	2	2	2	2	2	2	6	2
10	3	3	3	3	3	3	3	3	3	3	3	3	3	3	3	3	3	3	3	3	2	2	2	2	4	3
11	3	2	2	3	3	3	3	3	3	3	3	3	2	2	2	4	4	4	4	3	3	3	3	6	3	
12	3	2	2	2	2	2	2	2	2	2	2	2	2	2	2	2	2	3	3	3	2	2	2	2	6	2
13	3	3	3	3	2	2	2	2	2	2	2	2	2	2	2	2	2	2	2	2	2	2	2	2	4	2
14	2	2	1	2	2	2	2	2	2	3	3	3	2	2	2	2	3	3	3	3	3	3	3	2	6	3
15	3	2	2	2	2	2	2	2	2	2	3	3	3	3	2	2	3	3	2	3	2	2	2	2	5	2
16	3	2	2	3	3	2	2	3	3	3	3	3	3	3	3	3	3	3	3	2	2	2	2	2	5	3
17	3	3	3	3	3	2	2	2	3	4	5	5	4	4	3	4	4	3	4	4	4	4	4	4	6	4
18	4	3	3	3	3	3	4	5	5	5	4	4	4	4	3	3	3	3	3	3	4	4	4	5	7	4
19	4	4	4	3	3	3	3	3	3	3	4	4	4	4	4	4	4	4	3	3	3	3	3	3	4	4
20	3	3	3	3	3	3	3	3	4	4	4	4	4	3	3	3	4	4	4	3	3	3	3	3	5	3
21	4	4	4	3	4	4	3	3	3	3	4	4	5	4	4	6	3	2	3	3	3	3	3	3	5	4
22	4	3	3	3	3	3	3	3	3	4	4	4	4	4	3	3	3	3	3	3	3	3	3	4	6	3
23	4	3	3	2	3	1	1	3	4	4	3	3	3	4	4	4	4	4	4	3	3	4	4	4	5	3
24	5	5	4	4	5	5	4	4	4	4	4	3	3	3	3	3	3	3	3	3	3	3	2	4	4	
25	2	2	2	3	2	3	3	3	3	3	2	2	2	2	2	2	2	2	2	2	2	2	2	2	2	2
26	2	2	2	2	2	2	3	2	2	2	2	2	M	3	2	2	2	3	3	3	2	2	2	2	5	2
27	2	2	2	2	2	2	2	2	2	2	2	2	2	3	3	3	3	2	2	2	2	2	3	6	2	
28	4	4	3	4	4	3	3	3	3	3	4	3	3	3	3	3	3	3	3	4	3	3	3	5	3	
29	4	4	3	3	3	3	3	3	3	3	4	4	3	4	4	3	3	3	2	2	2	2	2	3	3	
30	2	1	1	1	1	2	2	3	4	5	5	7	7	6	5	5	5	5	6	6	7	7	4	4	4	
31	4	3	4	5	4	3	3	3	3	4	3	M	5	4	4	3	3	5	8	8	3	3	3	3	4	

MONTHLY STATISTICS:

GEOM	ARITH-----PERCENTILES-----										RANGE-----		STN GEOM	PERCENT	NO. OF TIMES	
MEAN	MEDIAN	MEAN	50	90	95	98	99	1-HR		24-HR		DEVIATION	VALID DATA	ABOVE	LIMIT	LEVEL
3	3	3	3	4	5	6	7	1	-	8	2	-	4	1	100	0

NOTES:

1. FLAGS FOR INVALID DATA :
 - D: DYNAMIC CALIBRATION
 - T: TELEMETRY/DATALOGGR FAULT
 - M: MAINTENANCE OR ANALYZER FAULT
 - P: POWER FAILURE

THE HONGKONG ELECTRIC COMPANY, LTD.
AIR QUALITY DATA MONTHLY TIME SERIES REPORT

STATION : CHUNG HOM KOK ZONE SUBSTATION
POLLUTANT : NITROGEN DIOXIDE

MONTH: DECEMBER

YEAR : 2024

UNIT : MICROGRAMS/CUBIC METER

DAY	1	2	3	4	5	6	7	8	9	10	11	12	13	14	15	16	17	18	19	20	21	22	23	24	MEAN
1	10	10	10	9	10	12	11	13	18	17	11	11	11	12	12	14	15	18	17	12	11	12	11	9	12
2	8	8	8	7	10	13	12	15	17	17	17	18	15	13	12	12	13	14	11	13	12	11	9	15	13
3	12	12	9	10	9	11	12	16	16	13	8	9	9	10	8	12	12	14	14	13	12	11	8	8	11
4	6	M	7	6	7	5	7	10	10	9	10	8	9	8	8	7	11	12	8	9	8	9	8	7	8
5	6	6	6	6	6	6	9	13	12	12	14	10	11	10	11	14	16	19	22	18	13	15	10	10	11
6	9	8	7	7	10	10	12	10	10	12	17	16	16	32	29	48	58	74	54	35	37	17	13	17	23
7	19	23	16	14	14	11	12	12	15	22	19	42	37	52	51	35	26	29	30	23	20	19	20	20	24
8	19	16	11	10	8	9	11	12	13	14	16	11	10	12	13	12	14	17	20	21	20	17	16	20	14
9	15	17	16	14	14	15	15	19	29	19	19	21	15	14	10	12	11	11	12	12	11	11	12	14	15
10	14	11	13	13	12	10	12	14	14	15	16	14	13	13	11	13	13	14	13	13	11	11	14	12	13
11	12	9	8	10	10	12	21	28	30	26	31	16	14	16	20	34	60	64	64	43	34	26	32	28	27
12	21	13	13	16	15	16	15	19	19	11	10	12	13	11	13	17	17	16	19	22	27	30	27	25	17
13	21	19	20	14	16	19	20	25	38	43	42	43	37	34	37	35	39	38	33	33	30	28	23	24	30
14	22	18	15	14	15	15	15	17	21	22	23	30	28	26	29	28	29	26	28	31	26	18	17	17	22
15	16	16	15	15	14	14	13	14	19	24	30	21	19	19	29	24	40	39	37	35	25	21	23	16	22
16	15	12	10	11	10	10	12	15	19	50	31	27	18	16	24	27	27	18	25	21	16	18	16	19	19
17	18	14	15	20	24	23	25	30	26	26	28	29	26	22	20	26	26	25	21	29	38	26	30	25	25
18	26	M	20	22	20	23	20	23	22	26	29	28	26	26	22	22	25	26	29	19	19	17	17	15	23
19	13	12	11	10	10	9	11	16	18	19	18	19	22	30	29	25	30	30	25	24	23	21	19	22	19
20	19	15	15	15	14	13	17	21	34	29	22	25	22	20	22	27	57	46	49	41	38	32	30	24	27
21	26	23	19	21	21	17	15	17	29	48	42	39	68	58	57	57	39	31	27	19	15	15	16	16	31
22	14	13	13	12	11	12	13	14	14	16	17	20	18	21	18	19	20	20	17	20	22	24	24	23	17
23	23	26	22	20	19	18	19	27	27	24	26	29	47	36	42	53	52	41	39	37	33	30	30	33	31
24	30	26	21	20	18	16	18	19	20	22	23	20	18	18	19	19	19	20	21	27	33	27	24	24	22
25	17	20	18	19	19	20	20	22	22	20	18	17	11	18	47	33	64	32	30	35	19	17	18	18	24
26	17	16	15	18	18	18	60	25	17	15	15	13	M	19	17	25	37	95	48	58	33	29	25	27	29
27	23	16	17	19	18	18	16	15	19	23	19	19	19	17	17	23	22	21	29	30	32	29	24	22	21
28	20	20	17	16	16	16	19	22	24	28	28	32	30	28	28	29	29	32	31	31	28	22	19	20	24
29	19	19	17	16	16	18	22	24	25	23	23	23	23	24	25	24	25	28	24	21	20	18	17	17	21
30	15	15	14	15	16	16	15	25	27	42	48	101	84	59	52	52	59	76	77	100	114	147	69	34	53
31	30	24	20	19	21	17	16	18	21	30	29	M	52	57	84	106	118	128	136	138	123	107	94	78	64

MONTHLY STATISTICS:

GEOM	ARITH-----PERCENTILES-----							-----RANGE-----					STN GEOM	PERCENT	NO. OF TIMES	
MEAN	MEDIAN	MEAN	50	90	95	98	99	1-HR	24-HR	DEVIATION	VALID DATA	ABOVE	LIMIT	LEVEL		
19	19	23	19	37	52	79	107	5	-	147	8	-	64	2	99	0

- NOTES: 1. FLAGS FOR INVALID DATA :
- D: DYNAMIC CALIBRATION
 - T: TELEMETRY/DATALOGGR FAULT
 - M: MAINTENANCE OR ANALYZER FAULT
 - P: POWER FAILURE

THE HONGKONG ELECTRIC COMPANY, LTD.
AIR QUALITY DATA MONTHLY TIME SERIES REPORT
MONTH: DECEMBER

STATION : VICTORIA ROAD SUBSTATION
POLLUTANT : SULPHUR DIOXIDE

YEAR : 2024
UNIT : MICROGRAMS/CUBIC METER

DAY	1	2	3	4	5	6	7	8	9	10	11	12	13	14	15	16	17	18	19	20	21	22	23	24	MEAN	
1	12	12	13	12	12	12	12	13	13	13	13	13	13	13	13	13	12	13	12	13	12	12	12	14	13	
2	13	13	13	13	12	13	13	13	13	13	13	13	13	13	13	13	13	13	13	12	12	13	13	14	13	
3	12	12	13	13	12	12	12	12	12	13	13	12	13	13	13	13	13	12	12	12	12	12	12	13	12	
4	12	13	13	12	13	13	12	13	13	12	12	13	12	13	13	13	12	13	12	12	12	12	13	14	13	
5	13	13	13	13	13	12	13	12	13	13	13	13	12	13	13	13	13	13	13	12	13	13	13	14	13	
6	13	13	13	12	13	13	13	13	13	13	13	13	13	13	13	13	13	13	13	13	12	12	13	14	13	
7	12	13	13	13	12	13	12	13	13	13	13	13	13	13	13	13	13	13	13	12	12	12	13	14	13	
8	12	13	12	12	13	12	13	12	12	13	12	12	13	12	12	12	13	12	12	12	12	13	13	14	12	
9	13	12	12	13	13	13	13	12	12	13	12	12	13	13	13	13	13	12	12	12	12	12	14	13		
10	13	13	13	13	13	13	13	12	13	13	13	13	13	13	13	13	13	13	13	13	13	13	13	14	13	
11	13	13	13	13	13	13	13	13	13	13	13	13	13	13	13	13	13	13	13	13	13	13	13	15	13	
12	13	13	13	13	13	13	13	13	13	13	13	13	13	12	13	12	13	13	13	12	12	13	13	14	13	
13	13	13	13	13	13	13	13	12	13	13	13	13	13	13	13	13	13	13	13	13	13	13	13	15	13	
14	13	13	12	13	13	13	13	12	13	13	13	13	13	13	13	13	12	12	13	12	13	12	12	14	13	
15	12	13	13	12	12	13	13	12	13	12	12	12	12	13	13	13	12	12	13	12	13	13	13	14	13	
16	13	13	13	13	13	13	13	13	13	13	13	13	13	13	13	13	13	13	13	13	13	12	13	14	13	
17	13	13	13	13	13	13	13	13	13	13	12	M	0	0	0	0	0	0	0	0	0	0	0	6	0	
18	0	0	0	0	0	0	0	0	0	0	0	0	0	0	0	0	0	0	0	0	0	0	0	0	0	
19	0	0	0	0	0	0	0	0	0	0	0	0	0	0	0	0	M	1	1	1	1	1	1	2	0	
20	1	1	1	1	1	1	1	1	1	1	1	1	1	1	1	1	1	1	1	1	1	1	1	1	1	
21	1	1	1	1	1	1	1	1	1	1	1	1	1	1	1	1	1	1	1	1	1	1	1	1	1	
22	1	1	1	1	1	1	1	1	1	1	1	0	1	1	1	1	1	1	1	0	1	1	1	1	1	
23	1	1	1	1	1	1	1	1	1	1	1	1	1	1	1	1	1	1	1	1	1	1	1	1	1	
24	1	1	1	1	1	1	1	1	1	1	1	1	1	1	0	1	1	1	1	1	1	1	1	1	1	
25	1	0	1	1	1	1	1	0	1	1	1	1	1	1	1	1	1	1	1	1	1	1	1	1	1	
26	1	1	1	1	1	1	1	1	1	1	1	1	1	1	1	1	1	1	1	1	1	1	1	1	1	
27	1	1	1	1	1	1	1	0	1	1	1	1	1	1	1	1	1	1	1	1	1	1	1	1	1	
28	1	1	1	1	1	1	1	1	1	1	1	1	1	1	1	1	1	1	1	1	1	1	1	1	1	
29	1	1	1	1	1	0	1	1	1	1	1	1	1	1	1	1	1	1	1	1	0	1	1	1	1	
30	1	0	1	1	1	1	1	1	1	1	2	1	1	1	1	1	1	1	1	1	1	1	0	1	1	
31	1	1	1	1	1	1	1	1	1	1	1	1	1	1	1	1	1	1	1	1	1	1	2	2	1	1

MONTHLY STATISTICS:

GEOM	ARITH-----PERCENTILES-----								RANGE-----				STN GEOM	PERCENT	NO. OF TIMES	
MEAN	MEDIAN	MEAN	50	90	95	98	99	1-HR		24-HR		DEVIATION	VALID DATA	ABOVE	LIMIT LEVEL	
4	12	7	12	13	13	14	14	0	-	15	0	-	13	4	100	0

- NOTES: 1. FLAGS FOR INVALID DATA :
- D: DYNAMIC CALIBRATION
 - T: TELEMETRY/DATALOGGR FAULT
 - M: MAINTENANCE OR ANALYZER FAULT
 - P: POWER FAILURE

THE HONGKONG ELECTRIC COMPANY, LTD.
AIR QUALITY DATA MONTHLY TIME SERIES REPORT

STATION : VICTORIA ROAD SUBSTATION
POLLUTANT : NITROGEN DIOXIDE

MONTH: DECEMBER

YEAR : 2024

UNIT : MICROGRAMS/CUBIC METER

DAY	1	2	3	4	5	6	7	8	9	10	11	12	13	14	15	16	17	18	19	20	21	22	23	24	MEAN
1	6	5	7	7	6	6	8	9	9	7	10	13	8	7	9	10	11	13	17	17	13	15	10	8	10
2	10	9	16	18	10	6	13	20	20	21	19	19	20	23	13	13	26	21	19	13	13	8	7	8	15
3	6	5	4	4	4	4	6	8	12	18	13	11	12	8	7	20	19	18	15	11	8	6	5	6	10
4	4	M	4	3	4	4	4	7	10	9	10	9	7	9	12	17	18	16	9	8	6	5	5	5	8
5	4	4	3	3	4	4	6	8	12	13	12	10	8	8	13	9	12	19	21	21	26	23	16	7	11
6	6	4	3	3	4	4	5	6	10	12	11	10	11	11	13	16	19	20	27	24	22	20	14	17	12
7	11	7	5	5	5	6	8	11	13	14	16	14	12	16	13	14	13	15	14	13	10	8	9	8	11
8	8	6	4	4	4	4	5	5	4	5	6	7	6	5	5	6	6	8	8	8	8	7	5	6	6
9	5	4	4	4	4	4	5	6	9	11	15	10	10	8	12	12	13	14	9	9	9	8	9	7	8
10	7	5	5	5	4	4	5	10	11	9	9	9	9	13	14	10	11	11	9	7	7	7	6	6	8
11	5	4	3	4	5	7	8	15	14	16	22	19	23	24	23	22	29	27	38	36	38	27	14	12	18
12	11	9	7	6	5	5	5	8	12	13	14	10	9	10	12	10	13	16	17	17	16	15	12	9	11
13	10	9	6	6	6	5	6	10	11	11	12	11	11	13	15	14	14	13	12	10	10	9	9	9	10
14	6	5	4	3	3	3	4	6	8	9	9	9	10	9	8	8	7	9	11	9	8	8	7	8	7
15	6	5	5	5	4	4	5	8	10	9	10	8	8	8	7	10	11	11	11	11	9	10	9	9	8
16	7	5	5	5	4	4	6	12	18	18	17	17	17	16	18	22	24	22	22	25	19	16	14	12	14
17	9	11	9	7	6	7	9	12	14	14	25	M	34	25	22	23	24	20	21	30	25	28	22	19	18
18	17	M	8	7	7	8	8	13	24	15	15	15	15	14	14	28	28	20	16	13	11	9	8	8	14
19	6	5	4	4	3	4	5	8	10	13	13	12	14	13	15	20	37	27	23	18	14	12	11	10	13
20	8	6	6	5	5	5	7	11	13	14	15	15	13	18	26	23	22	21	23	33	26	22	15	12	15
21	14	16	10	8	7	7	7	9	12	13	15	17	17	19	17	29	22	15	16	12	10	9	10	8	13
22	7	6	5	4	4	5	5	7	8	8	9	6	6	10	10	9	11	11	9	9	9	8	9	9	8
23	7	7	7	8	7	6	7	8	12	16	14	11	14	16	23	27	30	32	23	14	12	11	10	10	14
24	11	9	6	6	6	6	7	11	14	16	15	10	9	9	11	10	9	12	14	15	11	10	10	9	10
25	8	7	6	6	5	11	9	8	10	10	11	14	14	16	17	22	21	25	24	24	24	21	15	13	14
26	13	12	14	14	17	17	14	12	14	17	17	16	18	29	28	29	31	32	34	37	37	35	33	28	23
27	17	11	8	7	6	6	7	8	10	14	13	13	12	12	13	15	19	26	22	29	24	17	13	11	14
28	10	9	8	7	6	6	7	9	10	11	12	13	14	13	12	13	13	13	14	11	10	9	8	8	10
29	7	7	6	6	5	5	6	8	8	8	9	9	10	8	8	8	9	11	11	9	10	9	9	9	8
30	14	7	6	5	5	5	9	20	20	22	34	29	30	29	30	32	33	36	39	40	44	27	33	41	25
31	31	12	11	10	9	8	12	12	16	22	21	21	19	22	28	24	23	28	32	32	38	48	18	10	21

MONTHLY STATISTICS:

GEOM	ARITH-----PERCENTILES-----										RANGE-----		STN GEOM	PERCENT	NO. OF TIMES	
MEAN	MEDIAN	MEAN	50	90	95	98	99	1-HR		24-HR		DEVIATION	VALID DATA	ABOVE	LIMIT LEVEL	
11	10	12	10	23	29	34	38	3	-	48	6	-	25	2	100	0

- NOTES: 1. FLAGS FOR INVALID DATA :
- D: DYNAMIC CALIBRATION
 - T: TELEMETRY/DATALOGGR FAULT
 - M: MAINTENANCE OR ANALYZER FAULT
 - P: POWER FAILURE

THE HONGKONG ELECTRIC COMPANY, LTD.
AIR QUALITY DATA MONTHLY TIME SERIES REPORT
MONTH: DECEMBER

STATION : AP LEI CHAU
POLLUTANT : SULPHUR DIOXIDE

YEAR : 2024
UNIT : MICROGRAMS/CUBIC METER

DAY	1	2	3	4	5	6	7	8	9	10	11	12	13	14	15	16	17	18	19	20	21	22	23	24	MEAN	
1	8	8	8	8	8	7	7	7	9	10	10	9	10	9	9	9	9	8	8	8	8	8	8	8	10	8
2	9	8	8	8	8	8	8	8	10	10	10	10	10	9	9	9	9	8	8	8	8	8	8	8	9	9
3	8	8	8	7	7	8	8	8	8	8	8	8	7	8	8	8	8	8	8	8	8	8	8	8	8	8
4	8	8	8	8	7	7	8	8	8	8	8	8	8	8	8	8	8	8	7	7	7	7	7	7	9	8
5	8	8	7	7	7	7	7	8	8	8	8	8	8	8	8	8	9	8	8	8	8	8	8	8	9	8
6	8	8	8	8	8	8	8	7	7	8	8	8	8	8	8	9	9	9	11	10	10	10	8	10	9	
7	9	8	8	8	8	8	8	8	8	8	9	9	8	9	8	9	8	8	7	8	7	7	7	7	8	8
8	8	7	7	7	7	7	7	7	7	7	7	8	7	7	7	7	7	7	7	7	7	7	7	7	9	7
9	8	7	7	7	7	7	7	7	7	7	7	7	7	8	8	7	7	7	7	7	7	7	7	7	10	7
10	8	8	8	8	8	8	8	8	8	8	9	9	9	8	8	8	8	8	8	8	8	8	14	10	8	
11	8	8	7	8	8	8	8	9	8	8	9	8	11	9	11	13	13	11	10	10	11	10	9	11	9	
12	9	8	8	8	8	7	7	8	8	8	8	7	8	7	7	7	M	8	8	8	8	8	8	10	8	
13	9	8	8	8	8	8	8	7	7	8	8	8	8	9	8	8	8	8	8	7	7	7	7	9	8	
14	8	7	7	7	8	8	8	8	8	8	9	8	8	8	8	8	8	8	8	8	9	8	8	10	8	
15	9	9	8	8	8	8	8	8	8	8	8	9	9	9	8	9	8	8	8	8	8	9	8	9	8	
16	8	8	8	8	8	8	8	8	8	9	10	11	10	10	9	10	9	8	8	8	8	8	8	9	9	
17	8	8	8	8	8	8	8	8	9	10	12	12	12	12	11	10	10	9	9	8	8	8	9	9	9	
18	9	9	9	9	9	9	9	10	10	10	10	11	10	10	10	9	10	9	9	9	9	10	10	11	10	
19	10	10	9	9	9	9	9	9	9	10	10	11	11	10	11	10	11	9	9	9	9	9	9	10	10	
20	9	9	9	9	9	9	9	9	10	10	11	10	9	10	11	10	10	10	10	10	9	9	9	10	10	
21	9	9	9	9	9	9	9	9	9	10	10	10	11	10	11	14	10	9	8	8	8	8	9	10	9	
22	9	9	9	9	9	9	9	9	9	10	10	10	10	10	9	9	9	8	8	8	8	9	9	11	9	
23	9	9	9	8	8	8	8	9	9	9	9	9	9	10	11	15	12	10	10	9	9	9	10	11	10	
24	10	10	10	10	10	10	10	10	10	10	9	8	8	8	8	8	8	8	8	8	9	8	8	9	9	
25	8	8	7	8	8	8	8	8	8	8	8	8	9	9	8	9	9	8	8	9	10	8	8	8	8	
26	8	8	8	8	9	9	8	8	9	10	9	8	9	10	10	10	10	9	10	10	12	11	9	10	9	
27	9	8	8	8	8	8	8	7	8	8	8	8	9	9	9	9	9	9	8	9	9	8	9	11	9	
28	10	10	10	9	10	10	9	9	9	9	9	9	9	9	9	9	9	9	9	9	9	9	9	10	9	
29	9	9	10	9	9	9	9	9	9	9	10	10	9	9	9	9	8	8	8	8	8	8	8	8	9	
30	8	8	7	7	7	8	8	8	10	12	15	14	12	11	10	12	13	13	12	12	13	12	12	14	11	
31	12	10	11	12	11	10	9	10	10	11	12	11	11	11	12	10	10	10	11	11	12	14	10	10	11	

MONTHLY STATISTICS:

GEOM	ARITH-----PERCENTILES-----										RANGE-----		STN GEOM	PERCENT	NO. OF TIMES	
MEAN	MEDIAN	MEAN	50	90	95	98	99	1-HR		24-HR		DEVIATION	VALID DATA	ABOVE	LIMIT	LEVEL
9	8	9	8	10	11	12	13	7	-	15	7	-	11	1	100	0

- NOTES: 1. FLAGS FOR INVALID DATA :
- D: DYNAMIC CALIBRATION
 - T: TELEMETRY/DATALOGGR FAULT
 - M: MAINTENANCE OR ANALYZER FAULT
 - P: POWER FAILURE

THE HONGKONG ELECTRIC COMPANY, LTD.
AIR QUALITY DATA MONTHLY TIME SERIES REPORT
MONTH: DECEMBER

STATION : AP LEI CHAU
POLLUTANT : NITROGEN DIOXIDE

YEAR : 2024
UNIT : MICROGRAMS/CUBIC METER

DAY	1	2	3	4	5	6	7	8	9	10	11	12	13	14	15	16	17	18	19	20	21	22	23	24	MEAN
1	14	14	13	13	11	10	12	13	12	12	10	7	7	7	8	9	9	14	20	20	23	22	16	13	13
2	13	12	8	10	19	11	14	16	15	20	22	21	23	10	8	10	15	9	10	8	8	12	14	14	13
3	7	6	4	5	7	10	14	18	16	14	8	9	7	6	4	5	7	6	8	11	11	10	11	6	9
4	5	3	3	3	3	3	6	11	9	7	6	5	4	4	4	4	5	6	4	5	4	4	3	4	5
5	4	4	4	4	4	4	6	6	7	6	10	10	10	8	9	9	30	18	10	19	35	53	19	18	13
6	14	11	6	5	6	7	7	9	11	11	12	16	30	26	40	42	43	54	54	39	46	68	38	31	26
7	21	16	15	11	11	11	15	20	26	27	33	32	27	37	34	37	28	34	28	24	25	22	21	22	24
8	17	12	9	8	7	8	11	14	14	13	14	15	8	7	6	8	9	13	18	19	18	17	15	13	12
9	11	11	10	9	8	11	12	15	19	21	24	17	10	13	14	12	12	8	8	12	15	12	14	10	13
10	9	M	9	8	7	7	10	15	8	9	11	8	8	8	6	5	6	8	7	9	8	7	8	8	8
11	8	5	4	5	8	12	18	23	19	22	30	11	36	21	43	65	60	50	68	87	73	47	44	33	33
12	25	21	17	14	14	14	18	24	26	31	25	11	10	9	9	9	M	19	25	27	33	25	20	23	20
13	23	19	17	15	17	16	16	21	27	28	30	29	26	32	33	32	33	33	35	32	27	24	24	28	26
14	21	14	10	9	8	8	11	17	20	20	21	20	21	22	23	26	19	28	27	26	21	19	18	20	19
15	16	14	11	12	10	11	11	15	17	21	19	20	19	20	22	25	26	28	30	31	35	32	30	29	21
16	23	16	11	10	10	12	17	28	42	53	49	41	43	39	41	50	44	23	44	41	31	26	25	26	31
17	23	24	34	17	14	17	22	28	27	20	29	45	48	51	41	29	23	13	15	45	55	64	69	32	33
18	21	17	14	14	14	17	19	27	35	42	38	30	27	26	31	26	36	32	28	25	23	20	16	21	25
19	17	12	8	8	8	10	16	24	25	24	21	17	34	28	37	28	37	28	33	27	26	27	34	30	23
20	23	15	13	12	12	14	19	30	29	34	35	21	12	24	29	38	49	58	61	56	60	29	31	42	31
21	37	36	29	26	19	18	20	26	27	28	35	38	35	31	34	57	42	34	29	22	14	18	17	21	29
22	22	18	13	10	10	13	16	22	25	25	13	9	11	13	10	11	15	13	15	14	13	15	22	22	15
23	18	16	13	12	12	12	14	20	23	22	18	22	27	27	40	80	69	46	29	26	23	23	23	27	27
24	20	18	14	13	14	14	18	24	30	29	16	12	11	12	13	13	15	18	23	25	26	22	19	20	18
25	17	13	12	11	12	14	16	23	28	28	24	25	30	32	36	49	54	45	40	47	79	39	27	17	30
26	12	15	21	38	36	49	45	38	39	38	22	10	28	40	51	72	59	67	80	87	96	75	47	26	45
27	19	14	11	11	11	11	11	12	15	20	19	16	12	11	11	16	28	34	40	45	55	27	26	22	21
28	18	17	14	12	12	13	13	18	21	25	22	21	22	21	23	26	26	28	34	28	25	24	21	22	21
29	20	17	14	12	10	10	13	15	16	14	14	13	12	12	13	13	13	16	17	15	16	14	17	17	14
30	11	11	10	9	9	11	13	29	46	67	91	77	54	48	56	49	48	68	72	89	117	88	101	112	54
31	73	30	95	53	47	19	18	31	39	32	52	40	42	31	51	27	28	37	47	52	41	61	20	13	41

MONTHLY STATISTICS:

GEOM	ARITH-----PERCENTILES-----								-----RANGE-----				STN GEOM	PERCENT	NO. OF TIMES	
MEAN	MEDIAN	MEAN	50	90	95	98	99	1-HR	24-HR	DEVIATION	VALID DATA	ABOVE	LIMIT	LEVEL		
18	19	23	19	44	55	73	88	3	-	117	5	-	54	2	100	0

- NOTES: 1. FLAGS FOR INVALID DATA :
- D: DYNAMIC CALIBRATION
 - T: TELEMETRY/DATALOGGR FAULT
 - M: MAINTENANCE OR ANALYZER FAULT
 - P: POWER FAILURE

THE HONGKONG ELECTRIC COMPANY, LTD.
AIR QUALITY DATA MONTHLY TIME SERIES REPORT
MONTH: DECEMBER

STATION : CHEUNG CHAU
POLLUTANT : SULPHUR DIOXIDE

YEAR : 2024
UNIT : MICROGRAMS/CUBIC METER

DAY	1	2	3	4	5	6	7	8	9	10	11	12	13	14	15	16	17	18	19	20	21	22	23	24	MEAN	
1	0	0	0	0	0	0	0	0	0	0	0	0	0	0	0	0	0	0	0	0	0	0	0	0	0	
2	0	0	0	0	0	0	0	0	0	0	1	1	1	1	1	0	0	0	0	0	0	0	0	0	1	0
3	0	0	0	0	0	0	0	0	0	0	0	0	0	0	0	0	0	0	0	0	0	0	0	0	0	0
4	0	0	0	0	0	0	0	0	0	0	0	0	0	0	0	0	0	0	0	0	0	0	0	0	0	0
5	0	0	0	0	0	0	0	0	0	0	0	0	0	0	0	0	0	0	0	0	0	0	0	0	0	0
6	0	0	0	0	0	0	0	0	0	0	0	0	0	0	0	0	0	0	0	0	0	0	0	0	0	0
7	0	0	0	0	0	0	0	0	0	0	0	0	0	0	0	0	0	0	0	0	0	0	0	0	0	0
8	0	0	0	0	0	0	0	0	0	0	0	0	0	0	0	0	0	0	0	0	0	0	0	0	0	0
9	0	0	0	0	0	0	0	0	0	0	0	0	0	0	0	0	0	0	0	0	0	0	0	0	0	0
10	0	0	0	0	0	0	0	0	0	0	0	0	0	0	0	0	0	0	0	0	0	0	0	0	0	0
11	0	0	0	0	0	0	0	0	0	0	1	1	1	1	0	0	1	0	0	0	0	0	1	1	1	0
12	0	0	0	0	0	0	0	0	0	0	0	0	0	0	0	0	0	0	0	0	0	0	0	0	1	0
13	0	0	0	0	0	0	0	0	0	0	0	0	0	0	0	0	0	0	0	0	0	0	0	0	0	0
14	0	0	0	0	0	0	0	0	0	0	0	0	0	0	0	0	0	0	0	0	0	0	0	0	0	0
15	0	0	0	0	0	0	0	0	0	0	0	0	0	0	0	0	0	0	0	0	0	0	0	0	0	0
16	0	0	0	0	0	0	0	0	0	0	0	M	M	M	M	M	2	2	1	1	2	1	2	2	2	1
17	2	4	2	1	1	1	1	1	1	2	3	4	4	3	3	3	3	2	2	2	2	1	1	1	1	2
18	1	3	2	2	3	2	3	3	4	3	3	3	3	3	3	2	3	2	2	2	2	2	2	2	2	3
19	2	2	2	2	1	1	1	1	1	2	2	2	2	2	2	2	2	2	2	2	2	2	2	2	1	2
20	1	1	1	2	2	1	2	2	2	3	3	2	2	2	3	4	4	2	2	2	2	2	2	2	2	2
21	2	2	2	2	2	1	1	2	2	2	2	3	3	3	3	2	2	2	2	2	2	1	1	1	2	2
22	2	2	2	1	1	2	2	2	2	2	3	2	2	3	3	3	2	2	2	2	1	1	1	1	2	2
23	2	2	2	2	2	1	2	2	3	3	3	3	3	3	3	3	2	2	2	2	2	3	3	3	2	2
24	3	3	3	3	3	3	3	2	2	2	3	2	2	1	1	1	1	1	1	1	2	2	1	2	2	2
25	1	1	1	1	1	1	1	1	1	1	1	1	1	1	1	2	2	1	1	1	1	1	1	1	1	1
26	1	1	1	1	1	1	1	1	1	1	1	2	2	2	2	2	1	1	1	2	2	2	2	2	2	1
27	1	1	1	1	1	1	1	0	0	1	1	1	1	1	2	2	2	2	1	1	1	1	2	2	1	1
28	3	3	2	2	2	2	2	2	2	2	2	2	2	2	2	2	2	2	2	2	2	2	2	2	2	2
29	1	2	2	2	3	2	2	2	2	2	2	2	2	2	2	2	2	1	1	0	1	1	0	0	2	2
30	1	0	0	0	0	0	1	1	1	1	2	2	2	3	3	2	2	2	2	2	5	5	5	5	2	2
31	6	6	6	4	3	3	3	3	3	3	3	3	3	3	3	3	2	2	2	2	2	2	2	2	2	3

MONTHLY STATISTICS:

GEOM	ARITH-----PERCENTILES-----							-----RANGE-----					STN GEOM	PERCENT	NO. OF TIMES	
MEAN	MEDIAN	MEAN	50	90	95	98	99	1-HR		24-HR			DEVIATION	VALID DATA	ABOVE LIMIT LEVEL	
2	1	1	1	3	3	3	4	0	-	6	0	-	3	2	99	0

- NOTES: 1. FLAGS FOR INVALID DATA :
- D: DYNAMIC CALIBRATION
 - T: TELEMETRY/DATALOGGR FAULT
 - M: MAINTENANCE OR ANALYZER FAULT
 - P: POWER FAILURE

THE HONGKONG ELECTRIC COMPANY, LTD.
AIR QUALITY DATA MONTHLY TIME SERIES REPORT
MONTH: DECEMBER

STATION : CHEUNG CHAU
POLLUTANT : NITROGEN DIOXIDE

YEAR : 2024
UNIT : MICROGRAMS/CUBIC METER

DAY	1	2	3	4	5	6	7	8	9	10	11	12	13	14	15	16	17	18	19	20	21	22	23	24	MEAN
1	36	39	46	33	29	36	50	77	64	19	23	22	27	16	12	11	13	16	16	17	27	36	12	58	31
2	44	47	52	29	45	60	73	68	27	44	35	39	46	34	22	14	17	12	14	9	13	12	14	35	34
3	66	66	25	20	33	57	62	62	64	63	33	43	24	15	12	14	18	14	9	14	21	16	48	23	34
4	16	M	10	7	15	15	9	13	14	18	20	19	11	7	5	8	6	10	7	7	14	13	12	11	12
5	13	19	16	14	12	9	12	20	19	14	19	15	18	24	23	17	15	13	20	19	29	76	19	14	20
6	14	36	28	14	11	10	16	18	19	35	37	45	37	48	50	29	39	30	30	28	36	90	88	58	35
7	52	69	62	45	36	34	32	36	32	27	29	42	57	56	49	59	79	71	60	43	30	24	24	24	45
8	21	19	20	18	17	19	19	24	26	20	18	20	23	28	42	35	49	37	26	37	44	42	38	29	28
9	27	26	25	19	24	27	36	35	41	41	49	55	53	55	54	40	36	13	10	13	23	14	20	24	32
10	16	17	16	16	17	13	17	16	26	24	23	17	25	18	13	10	20	16	14	12	18	16	16	20	17
11	17	24	21	14	33	37	43	43	65	69	73	76	69	37	21	30	33	32	33	66	61	73	71	66	46
12	40	28	23	17	16	17	21	27	26	23	35	32	38	34	23	11	13	17	26	32	42	46	45	53	29
13	41	42	32	20	19	20	24	34	41	38	37	36	41	47	42	44	46	54	46	42	37	29	30	27	36
14	23	18	20	22	20	23	24	29	28	25	32	33	37	31	36	47	52	45	41	37	37	32	27	24	31
15	23	20	17	18	19	20	21	27	32	24	33	34	24	29	39	47	56	50	50	49	40	38	36	31	32
16	22	18	18	17	21	28	27	38	40	55	57	M	M	M	M	M	64	34	29	93	125	103	108	93	52
17	104	94	50	29	47	66	58	47	44	66	67	67	65	55	40	25	22	25	26	17	71	113	68	52	55
18	53	M	49	51	50	42	49	51	55	44	38	39	31	44	56	43	36	34	90	46	31	26	30	25	44
19	22	23	20	18	17	19	22	33	35	39	41	51	46	47	51	50	54	47	77	63	56	45	38	34	40
20	28	28	24	26	21	26	34	35	44	48	48	41	44	47	37	34	37	38	42	41	37	58	111	112	43
21	101	62	51	29	30	36	42	44	50	48	50	50	50	69	86	66	68	62	46	45	36	28	31	38	51
22	31	21	22	18	18	20	21	29	30	31	33	35	34	31	20	13	12	14	18	30	27	20	26	52	25
23	49	39	27	18	20	33	39	44	44	56	57	59	58	64	66	62	55	52	75	85	74	71	53	42	52
24	38	28	31	29	28	30	31	46	38	42	49	49	40	28	22	23	23	22	31	44	83	64	30	65	38
25	53	22	25	29	26	39	39	43	41	36	31	39	45	48	47	72	82	98	86	77	75	84	72	65	53
26	50	41	42	51	45	50	56	52	42	41	38	47	41	47	45	40	26	42	35	98	87	76	79	49	51
27	26	19	17	14	19	17	15	19	16	25	33	27	17	12	13	17	26	35	31	35	109	107	99	45	33
28	26	22	15	15	17	20	24	26	32	30	25	27	32	39	43	42	44	37	38	34	28	28	32	27	29
29	26	26	22	20	32	35	37	42	43	43	32	31	19	26	23	16	15	16	17	14	16	16	18	18	25
30	19	16	27	19	18	30	43	44	56	47	43	55	41	37	38	39	45	46	61	137	137	118	122	100	56
31	105	87	75	51	50	60	52	51	51	43	40	45	56	49	37	29	25	27	37	31	31	32	42	30	47

MONTHLY STATISTICS:

GEOM	ARITH-----PERCENTILES-----										RANGE-----		STN GEOM	PERCENT	NO. OF TIMES	
MEAN	MEDIAN	MEAN	50	90	95	98	99	1-HR		24-HR		DEVIATION	VALID DATA	ABOVE	LIMIT	LEVEL
32	33	37	33	65	77	100	110	5	-	137	12	-	56	2	99	0

- NOTES: 1. FLAGS FOR INVALID DATA :
- D: DYNAMIC CALIBRATION
 - T: TELEMETRY/DATALOGGR FAULT
 - M: MAINTENANCE OR ANALYZER FAULT
 - P: POWER FAILURE

Appendix C Summary Results on Water Quality Monitoring

LAMMA POWER STATION FGD WASTEWATER TREATMENT PLANT EFFLUENT DISCHARGE TO ASH LAGOON SUSPENDED SOLIDS AND PH

Period : October - December 2024

Week Ending	No. of Samples	Suspended Solids, mg/L			pH		
		Maximum	Minimum	Average	Maximum	Minimum	Average
05/10/24	1*	7	7	7	8.2	8.2	8.2
12/10/24	1*	6	6	6	8.3	8.3	8.3
19/10/24	0*	N/A	N/A	N/A	N/A	N/A	N/A
26/10/24	0*	N/A	N/A	N/A	N/A	N/A	N/A
02/11/24	0*	N/A	N/A	N/A	N/A	N/A	N/A
09/11/24	1*	10	10	10	8.2	8.2	8.2
16/11/24	0*	N/A	N/A	N/A	N/A	N/A	N/A
23/11/24	0*	N/A	N/A	N/A	N/A	N/A	N/A
30/11/24	2*	9	8	9	8.3	8.2	8.3
07/12/24	2*	7	7	7	8.3	8.3	8.3
14/12/24	1*	8	8	8	8.3	8.3	8.3
21/12/24	1*	9	9	9	8.1	8.1	8.1
28/12/24	0*	N/A	N/A	N/A	N/A	N/A	N/A

Remark :

* - No sampling for the remaining day(s) of the week / no sampling due to no discharge

**LAMMA POWER STATION
FGD WASTEWATER TREATMENT PLANT
EFFLUENT DISCHARGE TO ASH LAGOON
TRACE METAL, TOTAL PHOSPHORUS
AND TOTAL NITROGEN ANALYSIS**

Period : October – December 2024

Sampling date		9/10/2024	6/11/2024	4/12/2024
Barium,	ug/L	<150	<150	<150
Mercury,	ug/L	<0.5	<0.5	<0.5
Cadmium,	ug/L	<1.0	1.4	1.3
Iron,	ug/L	<400	<400	<400
Total Phosphorous,	mg/L	<0.8	<0.8	<0.8
Total Nitrogen,	mg/L	86	114	116
Cyanide,	mg/L	<0.01	<0.01	<0.01

Remark:

According to the WPCO Ash Lagoon Discharge Licence, contents at exact levels of trace metals below 1/10th of the WPCO Licence permitted limits will not be reported. When the concentration of a metal exceeds 1/10th of the limit, the exact value of the metal concentration will be reported.

Appendix D Summary of EMIS

EM&A Log Ref.	Mitigation Measures	Implementation Status
	GENERAL	
A1	No other process, except the Wet Limestone-Gypsum process used in the FGD plants of the coal-fired Units L6, L7 and L8 within the Lamma Power Station, shall be used in the FGD plants for the projects unless otherwise agreed by EPD.	Complied
	WATER QUALITY	
B1	All wastewater arising from the operation of the projects shall be collected and directed to the existing wastewater treatment plant within the Lamma Power Station for treatment.	Complied
B2	The operational plant effluent from the FGD plants should be reused as much as possible in order to minimise discharge to the WWTP.	Complied
B3	Maintenance of the WWTP should be performed regularly to ensure the effluent from the WWTP would not exceed the current requirements stipulated in the WPCO licence for Ash Lagoon.	Complied
	WASTE	
C1	No gypsum or sludge arising from the operation of the projects shall be disposed of anywhere. All gypsum and sludge shall be collected and reused.	Complied
	NOISE	
D1	Equipment including the Absorber Recirculation Pump, Oxidation Air Blower, Booster Fan and Booster Fan Motor of the FGD plants shall be acoustically insulated and the Gas-Gas Heater (untreated side) of the FGD plants shall be provided with reinforced lagging to reduce the noise impact.	Complied