

香港電燈有限公司
The Hongkong Electric Co., Ltd.



**Lamma Power Station
Units L2, L4 & L5 Flue Gas Desulphurization
Plants Retrofit**

Operational Phase

Quarterly Environmental Monitoring & Audit Report

January – March 2025

香港電燈有限公司
The Hongkong Electric Co., Ltd.



ENVIRONMENTAL IMPACT ASSESSMENT (EIA) ORDINANCE, CAP. 499

ENVIRONMENTAL PERMITS NO. EP-248/2006 & EP-287/2007

**LAMMA POWER STATION
UNITS L2, L4 & L5 FLUE GAS DESULPHURIZATION PLANTS RETROFIT**

**ENVIRONMENTAL MONITORING & AUDIT PROGRAMME
AT OPERATIONAL PHASE**


Report Title	Quarterly EM&A Report (January to March 2025)
Date	23 June 2025
Certified by	 (Mr. CHAN Hon Yeung, Environmental Team Leader)

TABLE OF CONTENT

EXECUTIVE SUMMARY

1.	INTRODUCTION.....	1
1.1	Background	1
1.2	Project Organisation	1
1.3	Plant Availability during the Reporting Period	2
1.4	Malfunction/Outage Records of Pollution Control Equipment	2
1.5	Summary of EM&A Requirements	2
2.	AIR QUALITY.....	10
2.1	Monitoring Requirements	10
2.2	Summary of Results and Observations	10
3.	WATER QUALITY.....	11
3.1	Monitoring Requirements	11
3.2	Summary of Results and Observations	11
4.	ENVIRONMENTAL AUDIT.....	12
4.1	Review of Environmental Monitoring Procedures	12
4.2	Assessment of Environmental Monitoring Results	12
4.3	Status of Environmental Licensing and Permitting	13
4.4	Implementation Status of Environmental Mitigation Measures	14
4.5	Implementation Status of Event/Action Plan	14
4.6	Implementation Status of Environmental Complaint Handling Procedures	14
5.	FUTURE KEY ISSUES.....	16
5.1	Outage Plan for the coming 3 months	16
5.2	Key issues for the coming 3 months	16
6.	CONCLUSION.....	17

LIST OF TABLES

Table 2.1	Air Quality Monitoring Parameters and Frequency
Table 3.1	Water Quality Monitoring Parameters and Frequencies
Table 4.1	Summary of Action/Limit Level Exceedances on Monitoring Parameters
Table 4.2	Amount of Gypsum and Sludge Collected for Reuse by Contractor
Table 4.3	Summary of Environmental Licensing and Permit Status
Table 4.4	Environmental Complaints Received
Table 4.5	Outstanding Environmental Complaints Carried Over

LIST OF FIGURES

Figure 1.1a	Location of New Facilities for L4 & L5 FGD Plant
Figure 1.1b	Location of New Facilities for L2 FGD Plant
Figure 1.2a	General Arrangement of L4 & L5 FGD Plant
Figure 1.2b	General Arrangement of L2 FGD Plant
Figure 1.3	Schematic Diagram of L2, L4 & L5 FGD Plant
Figure 1.4	Simplified Schematic Diagram of FGD Wastewater Treatment Plant
Figure 1.5	Organization Chart at Operational Phase

APPENDIX

Appendix A	Event/Action Plans in Response to Exceedance of AL Levels
Appendix B	Air Quality Monitoring Results
Appendix C	Summary Results on Water Quality Monitoring
Appendix D	Summary of EMIS

EXECUTIVE SUMMARY

This is the quarterly Environmental Monitoring and Audit (EM&A) report for the Projects “Lamma Power Station Units L4 & L5 Flue Gas Desulphurization Plant Retrofit” and “Lamma Power Station Unit L2 Flue Gas Desulphurization Plant Retrofit” prepared by the Environmental Team (ET). This report presents the results of impact monitoring on air and water quality and environmental audit for the operation of the said projects in the period from January to March 2025.

Environmental monitoring for air quality and water quality were carried out for the purpose of this EM&A program as well as for fulfilling the requirements stipulated in the relevant licences. The results were checked against the established Action/Limit (AL) levels. The implementation status of the environmental mitigation measures, Event/Action Plan and environmental complaint handling procedures were also checked.

Plant Availability

Unit L2 and Unit L4 were retired in October 2022 and January 2024 respectively. Unit L5 was retired in June 2024 and would be used for emergency generation if required.

Malfunction/Outage Records of Pollution Control Equipment

There were no major/minor outages of the Pollution Control Equipment during the reporting period.

Environmental Monitoring Works

Environmental monitoring works were performed during the operation of Units L2, L4 and L5 FGD Plants in the reporting period.

Air Quality

No exceedance of Action and Limit levels for air quality were recorded in the reporting period.

Water Quality

No exceedance of Action and Limit levels for water quality were recorded in the reporting period.

Environmental Licensing and Permitting

Description	Permit / Licence No.	Valid Period		Issued To	Date of Issuance
		From	To		
Environmental Permit for L4/5 FGD plants retrofit project	EP-248/2006	25/04/2006	-	HK Electric	25/04/2006
Environmental Permit for Unit L2 FGD plant retrofit project	EP-287/2007	02/10/2007	-	HK Electric	02/10/2007
Specified Process Licence issued under APCO	L-7-002(15)	01/01/2025	31/12/2026	HK Electric	18/11/2024
WPCO discharge licence for Ash Lagoon	WT00039618-2021	11/02/2022	31/12/2026	HK Electric	11/02/2022

Implementation Status of Environmental Mitigation Measures

Environmental mitigation measures were implemented in the reporting period.

Environmental Complaints / Feedback Cases

During the reporting period, there was no environmental complaint or feedback case regarding the operation of Lamma Power Station.

Future key issues

Key issues to be considered in the coming months include:

Air Impact

- To continuously carry out the air quality monitoring for Units L2, L4 and L5 (if emergency generation is required).

Water Impact

- To continuously carry out the water quality monitoring for FGD WWT plant.

Concluding Remarks

The environmental performance of the projects was generally satisfactory.

1. INTRODUCTION

The Environmental Team (hereinafter called the “ET”) was formed within The Hongkong Electric Co. Ltd (HK Electric) to undertake Environmental Monitoring and Audit for the “Operation of Lamma Power Station Units L4 & L5 Flue Gas Desulphurization Plant Retrofit Project” under the requirements of Clause 2.18 of Environmental Permit (EP) No. EP-248/2006 and “Operation of Lamma Power Station Unit L2 Flue Gas Desulphurization Plant Retrofit Project” under the requirements of Clause 2.10 of Environmental Permit (EP) No. EP-287/2007.

This report summarizes the environmental monitoring and audit work for the said Projects for the period from January to March 2025.

1.1 Background

The Projects involves retrofitting the three existing coal-fired generating Units L2, L4 and L5 of Lamma Power Station with Flue Gas Desulphurisation (FGD) plants for reducing sulphur dioxide emissions in support of Government policy to improve the air quality of the Pearl River Delta.

The Projects include the installation and operation of FGD plants with flue gas desulphurization efficiency of 90% for the three coal-fired Units L2, L4 & L5 to reduce the overall SO₂ emissions from Lamma Power Station. The process adopted for the FGD plants is “Wet Limestone-Gypsum”, a technology which has already been used in, and proved effective and reliable for the existing coal-fired units L6, L7 & L8. The flue gas from the boiler is directed to the FGD absorber inside which removal of SO₂ is take place by reaction with limestone slurry. After passing through the absorber, the treated flue gas is heated up by a gas-gas heater to over 80°C at boiler rated capacity and directed back to the existing chimney for discharge to the atmosphere. [Figure 1.1a](#), [Figure 1.1b](#), [Figure 1.2a](#), [Figure 1.2b](#) and [Figure 1.3](#) show the location and schematic of the FGD plants.

Wastewater filtrated from the reacted limestone slurry, i.e. gypsum slurry, is produced and it is directed to the existing FGD wastewater treatment plant (WWTP). The FGD WWTP is designed to treat the effluent from FGD plants by alkalization, precipitation and neutralization processes. The schematic diagram of the FGD WWTP is illustrated in [Figure 1.4](#).

The additional equipment for the FGD Plants retrofit projects for Units L2, L4 and L5 includes:

- Three sets of FGD absorbers and associated ductworks
- Three sets of booster fans
- Three sets of gas-gas heaters
- Two FGD Switchgear and Equipment Buildings
- Gypsum dewatering system comprising two sets of hydrocyclones and belt filters

1.2 Project Organisation

The management structure to oversee the Projects includes the following:

- Environmental Protection Department (The Authority);
- General Manager (Corporate Development) (The official contact person between HK Electric and EPD);
- Environmental Team Leader (ET Leader);

- Environmental Team (ET).

The organization chart for the Operation EM&A programme is shown in [Figure 1.5](#).

1.3 Plant Availability during the Reporting Period

Unit L2 and Unit L4 were retired in October 2022 and January 2024 respectively. Unit L5 was retired in June 2024 and would be used for emergency generation if required.

1.4 Malfunction/Outage Records of Pollution Control Equipment

There were no major/minor outages of the Pollution Control Equipment during the reporting period.

1.5 Summary of EM&A Requirements

Environmental Monitoring and Audit (EM&A) requirements have been discussed in the Environmental Impact Assessment (EIA) Report/ Project Profile for the Projects. The assessment results indicate that environmental monitoring works required for the EM&A programmes of these Projects are already in place or would be implemented under Lamma Power Station Extension Environmental Permit or environmental licenses for the operation of the existing Lamma Power Station. Such monitoring works are considered adequate for the Projects and no additional EM&A activities are required. Hence, environmental monitoring for air quality and water quality are carried out for the purpose of this EM&A program as well as for fulfilling the requirements stipulated in the relevant licences.

The EM&A monitoring work for air and water quality are described in [Section 2](#) and [Section 3](#) respectively.

The following environmental audits are summarized in [Section 4](#) of the report:

- Environmental monitoring results;
- The status of environmental licensing and permits for the Projects;
- The implementation status of environmental protection and pollution control / mitigation measures.

The future key issues for the Projects will be reported in [Section 5](#) of this report.

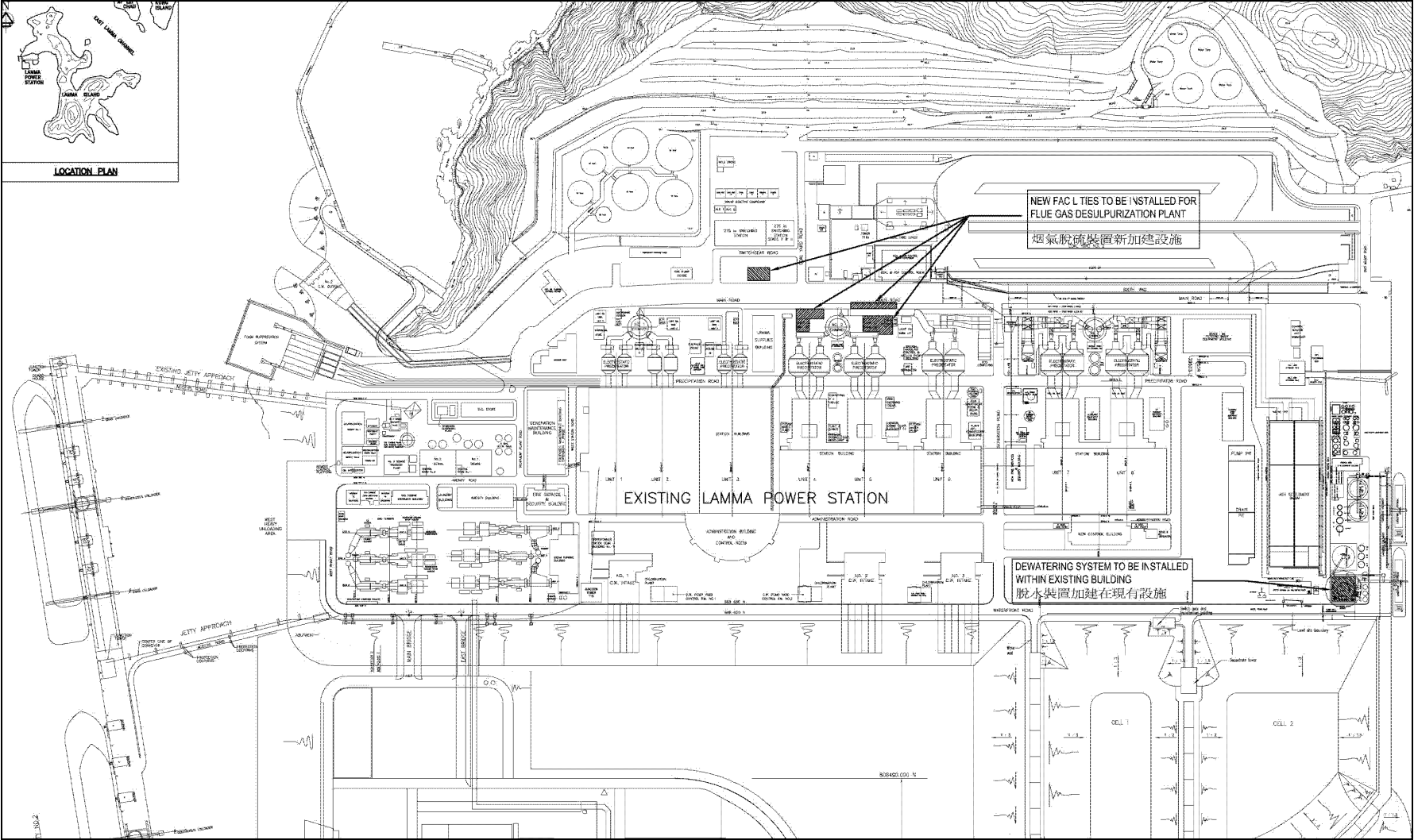


Figure 1.1a Location of New Facilities for L4 & L5 FGD Plants

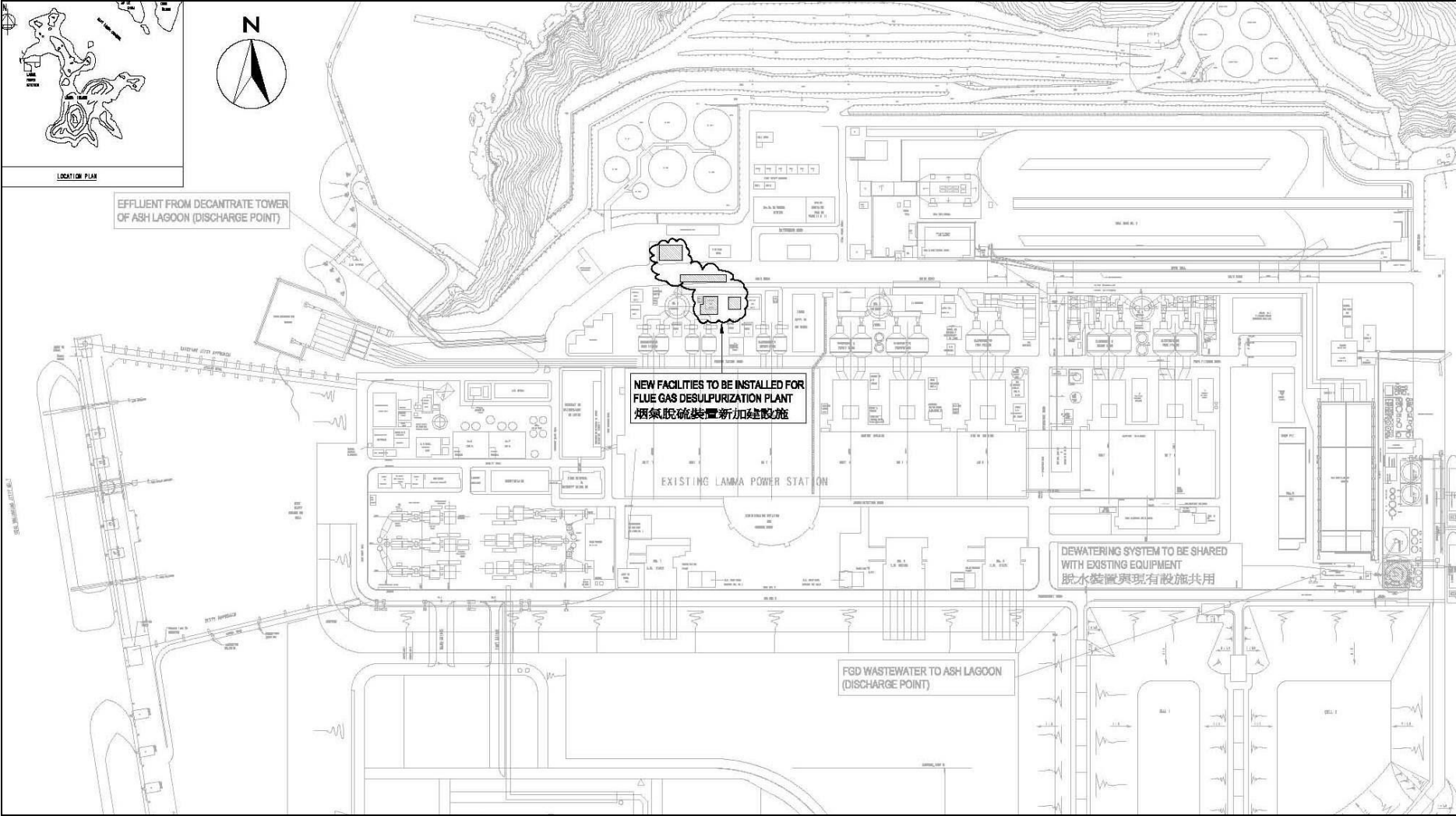


Figure 1.1b Location of New Facilities for L2 FGD Plant

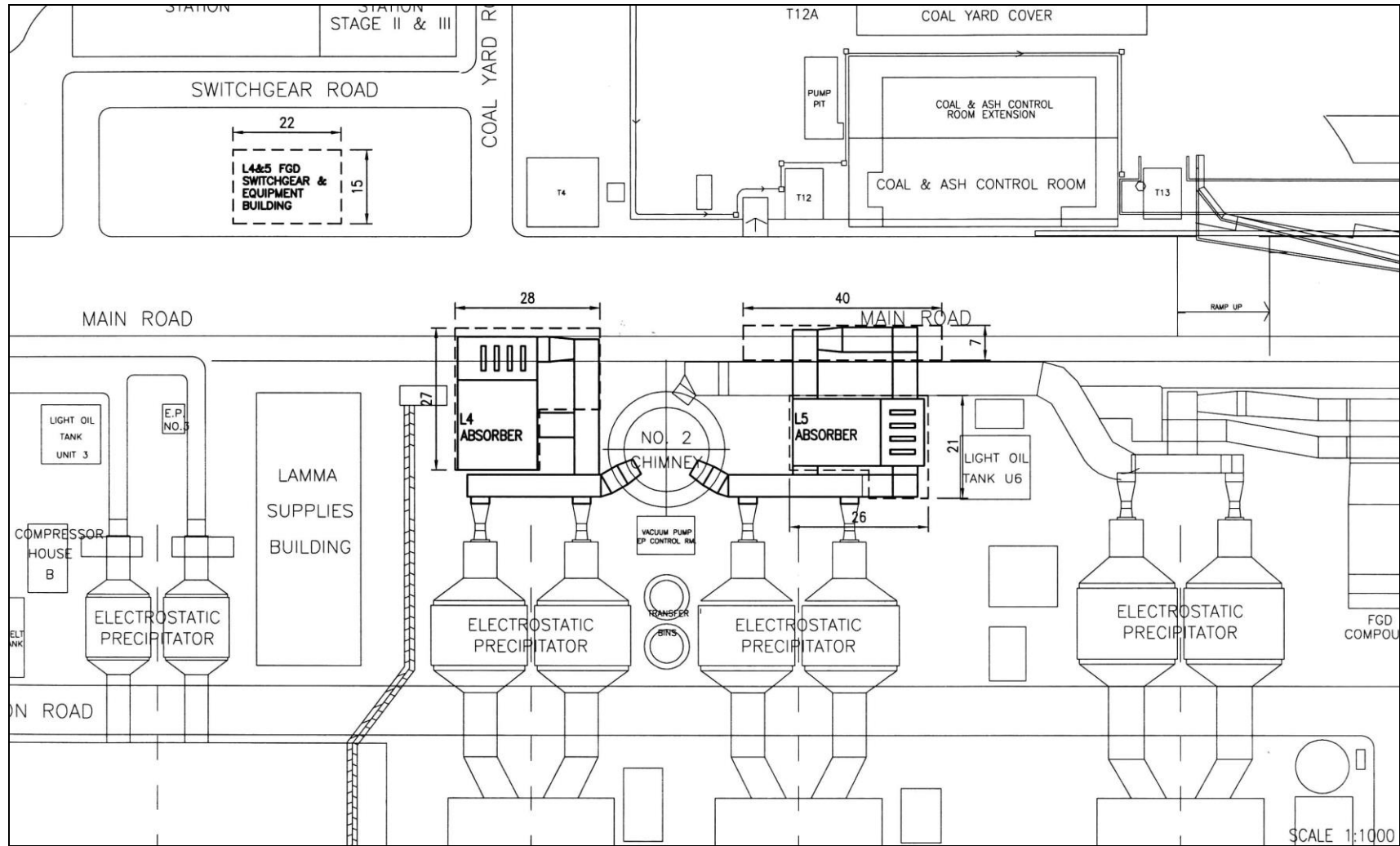


Figure 1.2a General Arrangement of L4 & L5 FGD Plants

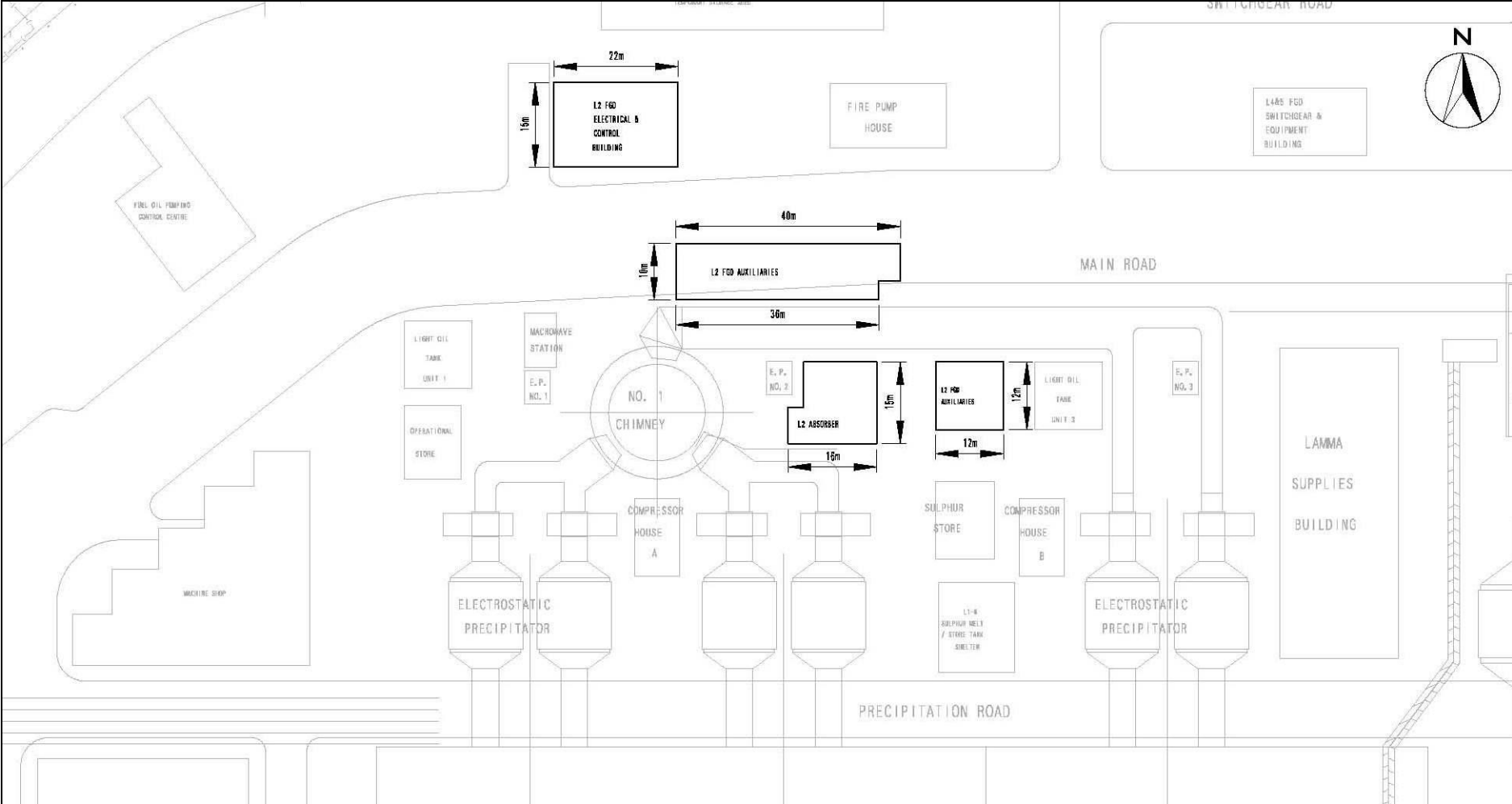


Figure 1.2b General Arrangement of L2 FGD Plant

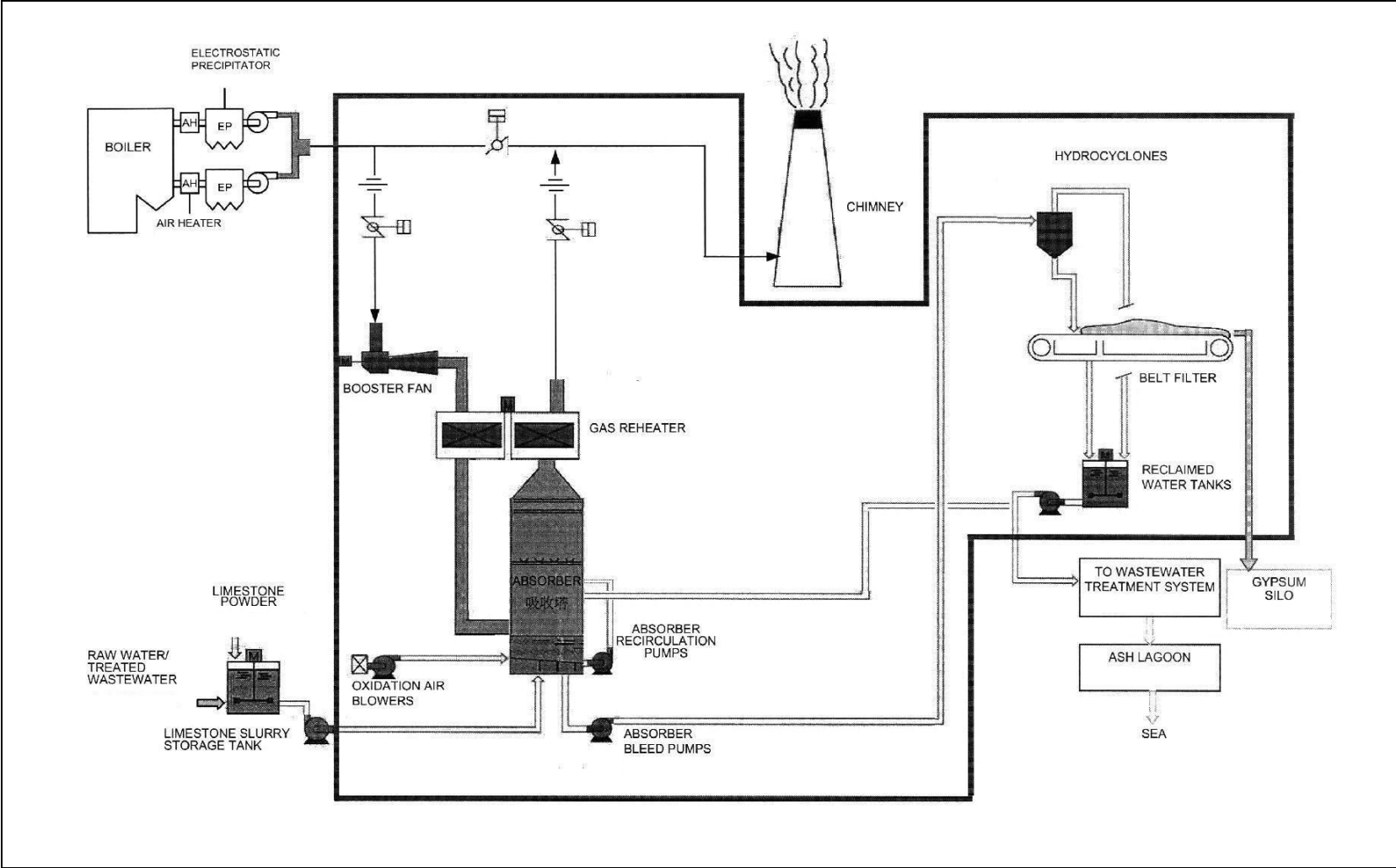


Figure 1.3 Schematic Diagram of the L2, L4 & L5 FGD Plant

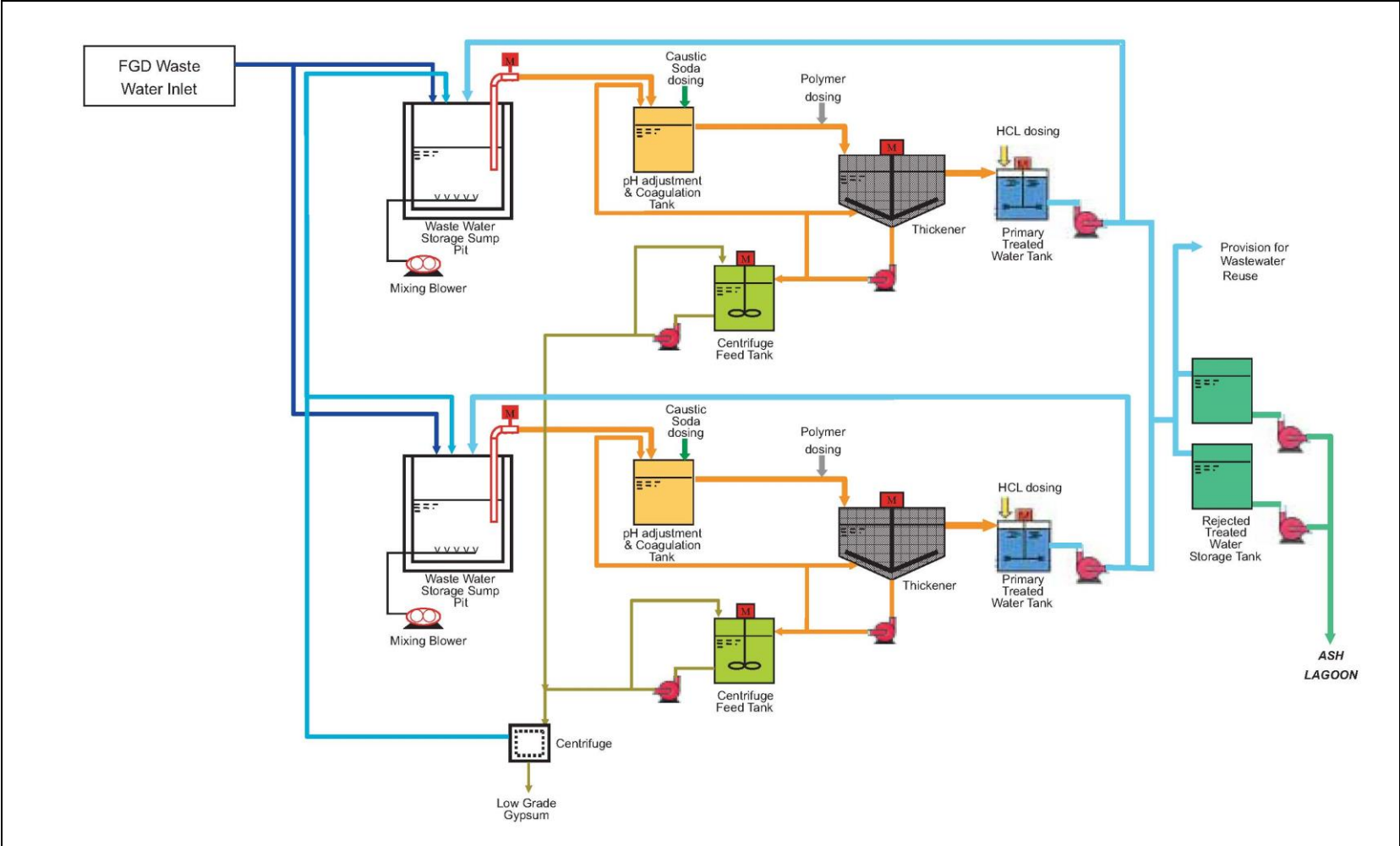


Figure 1.4 Simplified Schematic Diagram of FGD Wastewater Treatment Plant

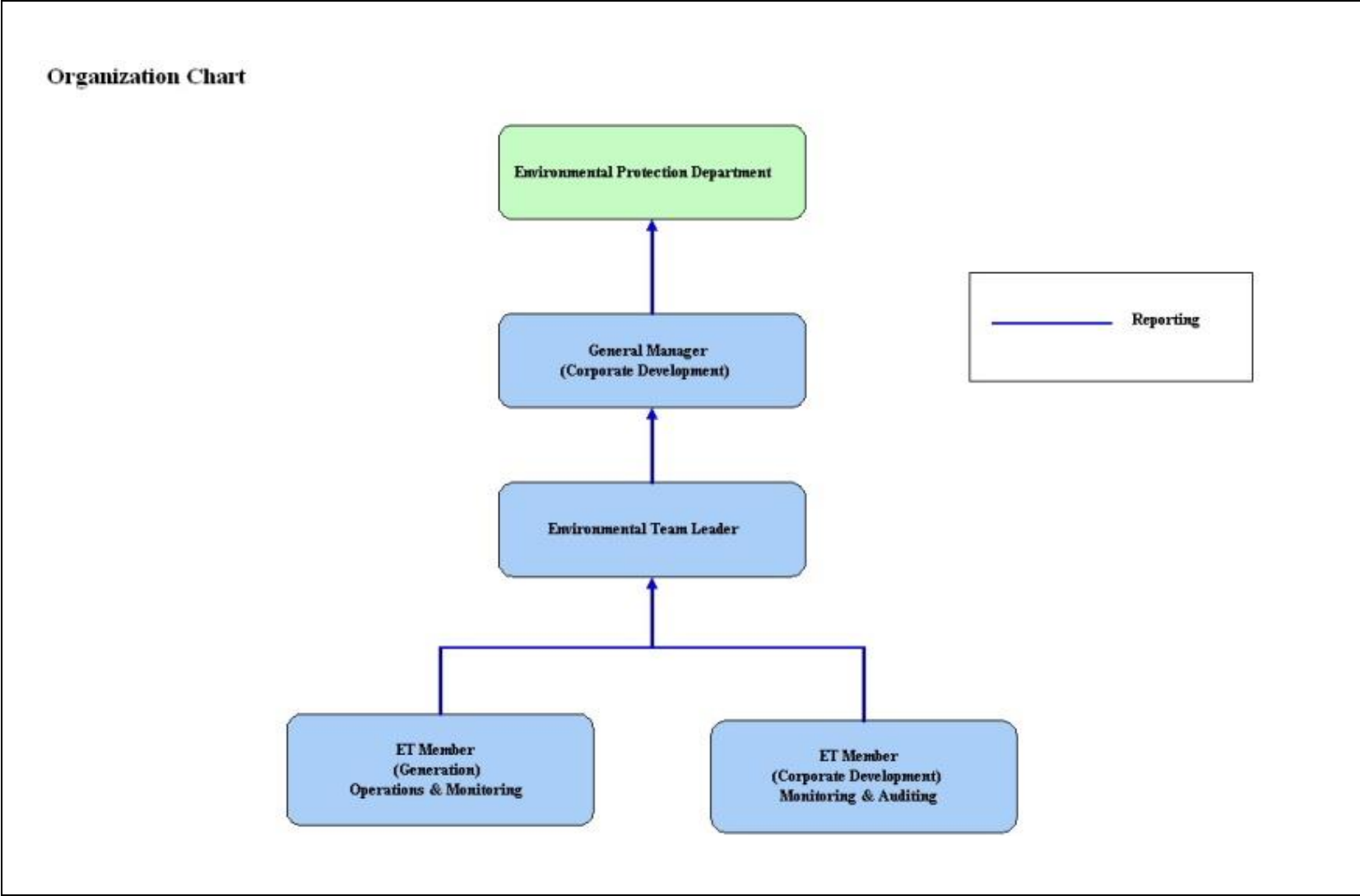


Figure 1.5 Organization Structure at Operational Phase of the Projects

2. AIR QUALITY

2.1 Monitoring Requirements

Since the Projects will bring a general air quality improvement, no additional EM&A activities are considered required, besides those already in place, such as those required by specified process licenses for the operation of the existing Lamma Power Station. Total Suspended Particulate (TSP) monitoring at East Gate and Reservoir area of Lamma Power Station is no longer required under the current SP Licence L-7-002(15). It is agreed with EPD that the results of continuous Respirable Suspended Particulate (RSP) monitoring at Lamma Power Station would be reported. In accordance with the requirements stipulated in the Specified Processes Licence issued under Air Pollution Control Ordinance, various operation parameters as stated in [Table 2.1](#) were monitored. Those parameters have to be checked against the Action/Limit Levels are shown in [Appendix A](#).

Table 2.1 Air Quality Monitoring Parameters and Frequency

Sources of Emission	Parameter	Frequency
Steam boilers L2, L4 & L5	Particulate	Once / year
	Particulate (Opacity)	Continuous
	SO ₂	Continuous
	NO _x expressed as NO ₂ (For L4 and L5 only)	Continuous
Fugitive Dust (Coal, PFA, Limestone, gypsum)	Respirable Suspended Particulate	Continuous
Chimney emissions	Ambient air	Continuous at existing ambient air monitoring stations
	SO ₂	
	NO ₂	

2.2 Summary of Results and Observations

Monitoring of various parameters as listed in [Table 2.1](#) above was conducted during the operation of Units L2, L4 and L5 in the reporting period. A summary of monitoring data is shown in [Appendix B](#).

No Action/Limit Level exceedance was recorded in the reporting period.

3. WATER QUALITY

3.1 Monitoring Requirements

According to the EIA Report/ Project Profile for the Projects, the current monitoring programme for the Lamma Power Station can cover the Projects and no additional EM&A measures are required besides those already in place. Hence, the EM&A work on water quality should strictly follow the relevant monitoring requirements stipulated in the discharge licence for Ash Lagoon issued under the Water Pollution Control Ordinance (WPCO).

Water quality monitoring was carried out for FGD Waste Water Treatment Plant (WWTP) in the reporting period. The parameters stated in [Table 3.1](#) were monitored and checked against the Action/Limit Levels as given in [Appendix A](#).

Table 3.1 Water Quality Monitoring Parameters and Frequencies

Item	Parameters	Frequencies
1	pH	Daily
2	Suspended Solids	Daily
3	Iron	Monthly
4	Barium	Monthly
5	Mercury	Monthly
6	Cadmium	Monthly
7	Cyanide	Monthly
8	Total Phosphorus	Monthly
9	Total Nitrogen	Monthly

3.2 Summary of Results and Observations

Monitoring of various parameters as listed in [Table 3.1](#) above was carried out during the discharge of the WWTP in the reporting period. A summary of the data is shown in [Appendix C](#).

The data recorded for the monitoring parameters were all below their corresponding Action/Limit Levels. No Action/Limit level exceedance was recorded in the reporting period. The effluent quality was generally satisfactory.

4. ENVIRONMENTAL AUDIT

4.1 Review of Environmental Monitoring Procedures

The environmental monitoring procedures were regularly reviewed by the Environmental Team. No modification to the existing monitoring procedures was recommended.

4.2 Assessment of Environmental Monitoring Results

Monitoring results for Air Quality and Water Quality

The environmental monitoring results for air quality and water quality are presented in [Sections 2 and 3](#) respectively are summarized in [Table 4.1](#).

Table 4.1 Summary of Action/Limit Level Exceedances on Monitoring Parameters

Item	Parameter Monitored	Monitoring Period	No. of Exceedances In		Event/Action Plan Implementation Status and Results
			Action Level	Limit Level	
Air					
1	Annual analysis of dust particulate emission rates at chimney stacks.	01/01/25-31/03/25	N.A.	0	No PM stack sampling tests were conducted in the reporting period.
2	Continuous monitoring of opacity, NOx, SO2 and CO2 in the flue gas at the chimney stacks	01/01/25-31/03/25	0	0	
3	Ambient SO2 & NOx monitoring at the Peak, Queen Mary Hospital, Victoria Road, Chung Hom Kok, Ap Lei Chau and Cheung Chau.	01/01/25-31/03/25	0	0	
Water					
1	pH in WWTP Effluent	01/01/25-31/03/25	0	0	
2	Suspended Solids in WWTP Effluent	01/01/25-31/03/25	0	0	

Item	Parameter Monitored	Monitoring Period	No. of Exceedances In		Event/Action Plan Implementation Status and Results
			Action Level	Limit Level	
3	Iron in WWTP Effluent	01/01/25-31/03/25	0	0	
4	Barium in WWTP Effluent	01/01/25-31/03/25	0	0	
5	Mercury in WWTP Effluent	01/01/25-31/03/25	0	0	
6	Cadmium in WWTP Effluent	01/01/25-31/03/25	0	0	
7	Cyanide in WWTP Effluent	01/01/25-31/03/25	0	0	
8	Total Phosphorus in WWTP Effluent	01/01/25-31/03/25	0	0	
9	Total Nitrogen in WWTP Effluent	01/01/25-31/03/25	0	0	

Waste Management Records

The quantity of FGD gypsum and sludge collected for reuse by contractor in the reporting period are shown in [Table 4.2](#).

Table 4.2 Amount of Gypsum and Sludge Collected for Reuse by Contractor

Period	Amount of Gypsum Collected	Amount of Sludge Collected
January 2025	1,405.39 MT	0 MT
February 2025	1,363.60 MT	26.43 MT
March 2025	1,322.69 MT	27.80 MT

4.3 Status of Environmental Licensing and Permitting

All permits/licenses obtained as of March 2025 are summarised in [Table 4.3](#).

Table 4.3 Summary of Environmental Licensing and Permit Status

Description	Permit / Licence No.	Valid Period		Status
		From	To	
Environmental Permit for Units L4/5 FGD Plants Retrofit	EP-248/2006	25/04/2006	-	Valid
Environmental Permit for Unit L2 FGD Plant Retrofit	EP-287/2007	02/10/2007	-	Valid
Specified Process Licence issued under APCO	L-7-002(15)	01/01/2025	31/12/2026	Valid
WPCO discharge licence for Ash Lagoon	WT00039618-2021	11/02/2022	31/12/2026	Valid

4.4 Implementation Status of Environmental Mitigation Measures

Mitigation measures detailed in the EIA Report and EP are required to be implemented. A summary of the Environmental Mitigation Implementation Schedule (EMIS) is presented in [Appendix D](#).

4.5 Implementation Status of Event/Action Plan

A list of specific actions in the event of exceedances of the various threshold levels for specific emission and discharge sources is given in [Appendix A](#).

As no Action/Limit level exceedance was recorded, no action has been devised.

4.6 Implementation Status of Environmental Complaint Handling Procedures

During the reporting period, there was no environmental complaint or feedback case regarding the operation of Lamma Power Station.

Table 4.4 Environmental Complaint(s) / Feedback Cases(s) Received

Case Reference / Date, Time Received / Date, Time Concerned	Descriptions / Actions Taken	Conclusion / Status
-	-	-

Table 4.5 Outstanding Environmental Complaint(s) / Feedback Case(s) Carried Over

Case Reference / Date, Time Received / Date, Time Concerned	Descriptions / Actions Taken	Conclusion / Status
-	-	-

5. FUTURE KEY ISSUES

5.1 Outage Plan for the coming 3 months

No major outage planned in the coming 3 months

5.2 Key issues for the coming 3 months

Key issues to be considered in the coming 3 months include:

Air Impact

- To continuously carry out the air quality monitoring for Units L2, L4 and L5 (if emergency generation is required).

Water Impact

- To continuously carry out the water quality monitoring for FGD Waste Water Treatment Plant.

6. CONCLUSION

Environmental monitoring was performed as required in the reporting period from January to March 2025. All monitoring results were checked and reviewed.

No Action/Limit level exceedance on air quality parameters were recorded in the reporting period.

No Action/Limit level exceedance on water quality parameters were recorded in the reporting period.

Environmental mitigation measures recommended in the EIA Report and EP were implemented in the reporting period.

During the reporting period, there was no environmental complaint or feedback case regarding the operation of Lamma Power Station.

No prosecution was received for the Projects in the reporting period.

The environmental performance of the Projects was generally satisfactory.

Appendix A Event/Action Plans in Response to Exceedance of AL Levels

A.1 Air

Source of Emissions	Parameters to be Monitored	Frequency	Concentration Not to Be Exceeded	Action	Limit	Proposed Action
Steam boilers L2, L4 and L5	Particulate	once/year	50 mg/Nm ³	-	50	ET Leader informs Generation Division at action level. Maintenance initiated. Temporary load shift until pollution control equipment repaired and reinstated. Report to EPD.
	Particulate (Opacity)	continuous	40% (bihourly)	35	40	
	SO ₂	continuous	200 mg/Nm ³ (1h)	190	200	
	NO _x expressed as NO ₂ (For L4 and L5 only)	continuous	615 mg/Nm ³ (1h)	585	615	
Chimney emissions	Ambient air	Continuous at existing ambient air monitoring stations				ET to review data on post-hoc basis and check for possible power station contribution.
	SO ₂		800 (µg/m ³) (1h)	-	800	
	NO ₂		300 (µg/m ³) (1h)	-	300	

A.2 Water

Source of Discharges	Parameters to be Monitored	Frequency	Concentration Not to Be Exceeded	Action	Limit	Proposed Action
FGD Wastewater Treatment Plant	pH	Daily	6-9	-	6-9	If pH exceeds limit level, consideration to be given to adjust chemical dosing. ET Leader inform Generation Division and investigation be initiated to identify and remedy cause. For all other parameters except pH, Generation Division to be informed, frequency of monitoring to be increased, and investigations to be initiated to identify cause and remedy if concentration exceeds action level. If problem persists to exceed the limit level, ET Leader verbally informs EPD and ensures remedial actions implemented.
	Suspended Solids	Daily	30 mg/L	25	30	
	Iron	Monthly	4 mg/L	3.6	4	
	Barium	Monthly	1.5 mg/L	1.3	1.5	
	Mercury	Monthly	0.005 mg/L	0.0045	0.005	
	Cadmium	Monthly	0.005 mg/L	0.0045	0.005	
	Cyanide	Monthly	0.1 mg/L	0.09	0.1	
	Total Phosphorus	Monthly	8 mg/L	7.2	8	
	Total Nitrogen	Monthly	400 mg/L	360	400	

Appendix B

Air Quality Monitoring Results

B.1 Ambient Respirable Suspended Particulate Monitoring at Lamma Power Station

Date: First Quarter of 2025 (January – March)

Date	RSP concentration ($\mu\text{g}/\text{m}^3$)	
	Reservoir	East Gate
01/1/2025	51	47
02/1/2025	54	62
03/1/2025	50	49
04/1/2025	47	57
05/1/2025	49	52
06/1/2025	53	55
07/1/2025	45	51
08/1/2025	62	65
09/1/2025	53	60
10/1/2025	46	53
11/1/2025	42	49
12/1/2025	30	30
13/1/2025	42	43
14/1/2025	26	37
15/1/2025	51	46
16/1/2025	68	72
17/1/2025	52	60
18/1/2025	48	52
19/1/2025	43	44
20/1/2025	40	44
21/1/2025	41	44
22/1/2025	31	40
23/1/2025	13	25
24/1/2025	23	28
25/1/2025	21	24
26/1/2025	20	18
27/1/2025	27	24
28/1/2025	37	34
29/1/2025	54	59
30/1/2025	38	42
31/1/2025	21	28

Date	RSP concentration ($\mu\text{g}/\text{m}^3$)	
	Reservoir	East Gate
01/2/2025	15	8
02/2/2025	22	17
03/2/2025	17	14
04/2/2025	12	15
05/2/2025	35	39
06/2/2025	29	36
07/2/2025	30	29
08/2/2025	47	51
09/2/2025	49	54
10/2/2025	36	37
11/2/2025	16	26
12/2/2025	17	12
13/2/2025	35	34
14/2/2025	26	28
15/2/2025	13	20
16/2/2025	46	43
17/2/2025	27	35
18/2/2025	73	75
19/2/2025	34	34
20/2/2025	32	35
21/2/2025	30	37
22/2/2025	27	33
23/2/2025	19	19
24/2/2025	20	22
25/2/2025	41	47
26/2/2025	44	46
27/2/2025	23	31
28/2/2025	12	37

Date	RSP concentration ($\mu\text{g}/\text{m}^3$)	
	Reservoir	East Gate
01/3/2025	26	26
02/3/2025	18	17
03/3/2025	12	13
04/3/2025	14	21
05/3/2025	9	17
06/3/2025	11	14
07/3/2025	13	20
08/3/2025	19	28
09/3/2025	24	32
10/3/2025	30	45
11/3/2025	46	44
12/3/2025	25	33
13/3/2025	31	32
14/3/2025	11	25
15/3/2025	15	23
16/3/2025	19	16
17/3/2025	35	47
18/3/2025	38	45
19/3/2025	34	50
20/3/2025	40	68
21/3/2025	35	77
22/3/2025	35	44
23/3/2025	48	41
24/3/2025	20	38
25/3/2025	45	38
26/3/2025	26	33
27/3/2025	26	24
28/3/2025	16	24
29/3/2025	14	12
30/3/2025	41	22
31/3/2025	34	33

B.2 Unit L2, L4 and L5 Stack Monitoring at Lamma Power Station

B.2.1 Monthly Summary of Stack NOx and SO2 for Unit L5

Date	Daily Maximum		
	SO2 concentration (mg/Nm3) #	NOx concentration (mg/Nm3) #	Opacity (%)
01/01/2025	*	*	*
02/01/2025	*	*	*
03/01/2025	*	*	*
04/01/2025	*	*	*
05/01/2025	*	*	*
06/01/2025	*	*	*
07/01/2025	*	*	*
08/01/2025	*	*	*
09/01/2025	*	*	*
10/01/2025	*	*	*
11/01/2025	*	*	*
12/01/2025	*	*	*
13/01/2025	*	*	*
14/01/2025	*	*	*
15/01/2025	*	*	*
16/01/2025	*	*	*
17/01/2025	*	*	*
18/01/2025	*	*	*
19/01/2025	*	*	*
20/01/2025	*	*	*
21/01/2025	*	*	*
22/01/2025	*	*	*
23/01/2025	*	*	*
24/01/2025	*	*	*
25/01/2025	*	*	*
26/01/2025	*	*	*
27/01/2025	*	*	*
28/01/2025	*	*	*
29/01/2025	*	*	*
30/01/2025	*	*	*
31/01/2025	*	*	*

Date	Daily Maximum		
	SO2 concentration (mg/Nm3) #	NOx concentration (mg/Nm3) #	Opacity (%)
01/02/2025	*	*	*
02/02/2025	*	*	*
03/02/2025	*	*	*
04/02/2025	*	*	*
05/02/2025	*	*	*
06/02/2025	*	*	*
07/02/2025	*	*	*
08/02/2025	*	*	*
09/02/2025	*	*	*
10/02/2025	*	*	*
11/02/2025	*	*	*
12/02/2025	*	*	*
13/02/2025	*	*	*
14/02/2025	*	*	*
15/02/2025	*	*	*
16/02/2025	*	*	*
17/02/2025	*	*	*
18/02/2025	*	*	*
19/02/2025	*	*	*
20/02/2025	*	*	*
21/02/2025	*	*	*
22/02/2025	*	*	*
23/02/2025	*	*	*
24/02/2025	*	*	*
25/02/2025	*	*	*
26/02/2025	*	*	*
27/02/2025	*	*	*
28/02/2025	*	*	*

	Daily Maximum		
	SO2 concentration (mg/Nm3) [#]	NOx concentration (mg/Nm3) [#]	Opacity (%)
01/03/2025	*	*	*
02/03/2025	*	*	*
03/03/2025	*	*	*
04/03/2025	*	*	*
05/03/2025	*	*	*
06/03/2025	*	*	*
07/03/2025	*	*	*
08/03/2025	*	*	*
09/03/2025	*	*	*
10/03/2025	*	*	*
11/03/2025	*	*	*
12/03/2025	*	*	*
13/03/2025	*	*	*
14/03/2025	*	*	*
15/03/2025	*	*	*
16/03/2025	*	*	*
17/03/2025	*	*	*
18/03/2025	*	*	*
19/03/2025	*	*	*
20/03/2025	*	*	*
21/03/2025	*	*	*
22/03/2025	*	*	*
23/03/2025	*	*	*
24/03/2025	*	*	*
25/03/2025	*	*	*
26/03/2025	*	*	*
27/03/2025	*	*	*
28/03/2025	*	*	*
29/03/2025	*	*	*
30/03/2025	*	*	*
31/03/2025	*	*	*

Note: # - Hourly average value. Expressed as at 0°C, 101.325kPa, dry and corrected to 12% CO₂ condition.

* - Unit L5 was not on load

^ - Proof-run of L5 was conducted

B.2.2 Monthly Summary of Stack NOx and SO2 for Unit L4

Date	Daily Maximum		
	SO2 concentration (mg/Nm3) #	NOx concentration (mg/Nm3) #	Opacity (%)
01/01/2025	*	*	*
02/01/2025	*	*	*
03/01/2025	*	*	*
04/01/2025	*	*	*
05/01/2025	*	*	*
06/01/2025	*	*	*
07/01/2025	*	*	*
08/01/2025	*	*	*
09/01/2025	*	*	*
10/01/2025	*	*	*
11/01/2025	*	*	*
12/01/2025	*	*	*
13/01/2025	*	*	*
14/01/2025	*	*	*
15/01/2025	*	*	*
16/01/2025	*	*	*
17/01/2025	*	*	*
18/01/2025	*	*	*
19/01/2025	*	*	*
20/01/2025	*	*	*
21/01/2025	*	*	*
22/01/2025	*	*	*
23/01/2025	*	*	*
24/01/2025	*	*	*
25/01/2025	*	*	*
26/01/2025	*	*	*
27/01/2025	*	*	*
28/01/2025	*	*	*
29/01/2025	*	*	*
30/01/2025	*	*	*
31/01/2025	*	*	*

Date	Daily Maximum		
	SO2 concentration (mg/Nm3) [#]	NOx concentration (mg/Nm3) [#]	Opacity (%)
01/02/2025	*	*	*
02/02/2025	*	*	*
03/02/2025	*	*	*
04/02/2025	*	*	*
05/02/2025	*	*	*
06/02/2025	*	*	*
07/02/2025	*	*	*
08/02/2025	*	*	*
09/02/2025	*	*	*
10/02/2025	*	*	*
11/02/2025	*	*	*
12/02/2025	*	*	*
13/02/2025	*	*	*
14/02/2025	*	*	*
15/02/2025	*	*	*
16/02/2025	*	*	*
17/02/2025	*	*	*
18/02/2025	*	*	*
19/02/2025	*	*	*
20/02/2025	*	*	*
21/02/2025	*	*	*
22/02/2025	*	*	*
23/02/2025	*	*	*
24/02/2025	*	*	*
25/02/2025	*	*	*
26/02/2025	*	*	*
27/02/2025	*	*	*
28/02/2025	*	*	*

Date	Daily Maximum		
	SO2 concentration (mg/Nm3) [#]	NOx concentration (mg/Nm3) [#]	Opacity (%)
01/03/2025	*	*	*
02/03/2025	*	*	*
03/03/2025	*	*	*
04/03/2025	*	*	*
05/03/2025	*	*	*
06/03/2025	*	*	*
07/03/2025	*	*	*
08/03/2025	*	*	*
09/03/2025	*	*	*
10/03/2025	*	*	*
11/03/2025	*	*	*
12/03/2025	*	*	*
13/03/2025	*	*	*
14/03/2025	*	*	*
15/03/2025	*	*	*
16/03/2025	*	*	*
17/03/2025	*	*	*
18/03/2025	*	*	*
19/03/2025	*	*	*
20/03/2025	*	*	*
21/03/2025	*	*	*
22/03/2025	*	*	*
23/03/2025	*	*	*
24/03/2025	*	*	*
25/03/2025	*	*	*
26/03/2025	*	*	*
27/03/2025	*	*	*
28/03/2025	*	*	*
29/03/2025	*	*	*
30/03/2025	*	*	*
31/03/2025	*	*	*

Note: # - Hourly average value. Expressed as at 0°C, 101.325kPa, dry and corrected to 12% CO₂ condition.

* - Unit L4 was not on load.

B.2.3 Monthly Summary of Stack SO2 for Unit L2

Date	Daily Maximum	
	SO2 concentration (mg/Nm3) [#]	Opacity (%)
01/01/2025	*	*
02/01/2025	*	*
03/01/2025	*	*
04/01/2025	*	*
05/01/2025	*	*
06/01/2025	*	*
07/01/2025	*	*
08/01/2025	*	*
09/01/2025	*	*
10/01/2025	*	*
11/01/2025	*	*
12/01/2025	*	*
13/01/2025	*	*
14/01/2025	*	*
15/01/2025	*	*
16/01/2025	*	*
17/01/2025	*	*
18/01/2025	*	*
19/01/2025	*	*
20/01/2025	*	*
21/01/2025	*	*
22/01/2025	*	*
23/01/2025	*	*
24/01/2025	*	*
25/01/2025	*	*
26/01/2025	*	*
27/01/2025	*	*
28/01/2025	*	*
29/01/2025	*	*
30/01/2025	*	*
31/01/2025	*	*

Date	Daily Maximum	
	SO2 concentration (mg/Nm3) [#]	Opacity (%)
01/02/2025	*	*
02/02/2025	*	*
03/02/2025	*	*
04/02/2025	*	*
05/02/2025	*	*
06/02/2025	*	*
07/02/2025	*	*
08/02/2025	*	*
09/02/2025	*	*
10/02/2025	*	*
11/02/2025	*	*
12/02/2025	*	*
13/02/2025	*	*
14/02/2025	*	*
15/02/2025	*	*
16/02/2025	*	*
17/02/2025	*	*
18/02/2025	*	*
19/02/2025	*	*
20/02/2025	*	*
21/02/2025	*	*
22/02/2025	*	*
23/02/2025	*	*
24/02/2025	*	*
25/02/2025	*	*
26/02/2025	*	*
27/02/2025	*	*
28/02/2025	*	*

Date	Daily Maximum	
	SO2 concentration (mg/Nm3) [#]	Opacity (%)
01/03/2025	*	*
02/03/2025	*	*
03/03/2025	*	*
04/03/2025	*	*
05/03/2025	*	*
06/03/2025	*	*
07/03/2025	*	*
08/03/2025	*	*
09/03/2025	*	*
10/03/2025	*	*
11/03/2025	*	*
12/03/2025	*	*
13/03/2025	*	*
14/03/2025	*	*
15/03/2025	*	*
16/03/2025	*	*
17/03/2025	*	*
18/03/2025	*	*
19/03/2025	*	*
20/03/2025	*	*
21/03/2025	*	*
22/03/2025	*	*
23/03/2025	*	*
24/03/2025	*	*
25/03/2025	*	*
26/03/2025	*	*
27/03/2025	*	*
28/03/2025	*	*
29/03/2025	*	*
30/03/2025	*	*
31/03/2025	*	*

Note: # - Hourly average value. Expressed as at 0°C, 101.325kPa, dry and corrected to 12% CO₂ condition.

* - Unit L2 was not on load.

B.2.4 Summary of Annual Stack Particulate Sampling

No stack particulate sampling was conducted for Unit L5 in the period January to March 2025. Unit L2, Unit L4 and Unit L5 were retired in October 2022, January 2024 and June 2024 respectively.

B.3 Ambient SO₂ and NO₂ monitoring Data at Southern District and Cheung Chau

THE HONGKONG ELECTRIC COMPANY, LTD.
AIR QUALITY DATA MONTHLY TIME SERIES REPORT
MONTH: JANUARY

STATION : VICTORIA PEAK
POLLUTANT : SULPHUR DIOXIDE

YEAR : 2025
UNIT : MICROGRAMS/CUBIC METER

DAY	1	2	3	4	5	6	7	8	9	10	11	12	13	14	15	16	17	18	19	20	21	22	23	24	MEAN	
1	11	12	10	11	11	10	10	10	11	11	10	11	11	12	12	12	12	11	11	10	11	10	11	9	11	
2	11	11	11	11	11	10	11	12	11	12	12	13	14	15	15	17	16	15	14	14	14	14	13	13	13	
3	13	14	14	14	13	11	13	13	13	14	13	14	15	15	16	16	16	16	15	14	14	14	13	12	14	
4	11	11	11	11	11	11	11	11	12	12	12	13	13	14	14	14	14	15	14	12	12	11	11	11	10	12
5	10	10	10	12	11	12	13	13	12	13	13	14	14	15	16	16	16	16	16	16	15	15	15	15	14	
6	15	14	14	14	14	13	14	15	15	15	14	14	15	15	15	15	16	15	15	14	14	13	11	12	14	
7	12	12	12	12	13	13	13	13	14	14	14	14	14	14	15	15	15	14	13	12	12	12	12	12	13	
8	12	12	12	12	13	13	13	13	14	14	13	14	15	14	15	16	15	14	14	14	12	11	12	12	13	
9	12	12	12	12	12	13	13	13	14	14	14	14	14	15	17	17	16	16	14	13	12	12	13	12	14	
10	12	13	13	13	13	13	13	13	13	13	14	13	14	12	13	13	13	13	12	12	11	12	12	11	13	
11	12	12	13	13	13	13	14	14	15	15	15	15	15	14	14	15	14	14	13	12	13	13	13	13	14	
12	13	14	14	15	15	15	15	15	16	16	16	16	15	13	13	14	15	14	14	13	12	12	12	12	14	
13	12	13	13	14	14	15	16	16	16	16	16	16	15	16	14	14	15	15	15	13	14	13	13	13	14	
14	13	14	14	14	14	14	15	15	15	14	14	13	13	14	14	14	14	14	13	13	13	13	14	13	14	
15	14	14	15	15	15	15	15	14	14	15	14	15	15	16	16	17	17	17	16	15	13	13	14	13	15	
16	14	14	13	13	14	14	14	14	15	16	16	16	15	16	17	19	19	19	18	18	17	15	15	13	16	
17	12	13	13	14	14	15	16	16	16	17	17	17	17	15	16	16	17	17	16	15	15	15	15	16	15	
18	15	16	16	17	17	17	17	17	17	19	19	18	18	18	18	18	18	19	18	18	16	17	16	16	17	
19	15	16	17	17	17	17	16	16	17	18	17	17	17	20	21	21	24	22	25	21	20	20	20	20	19	
20	19	19	17	16	16	16	16	17	17	18	18	19	17	18	19	20	19	20	20	19	18	17	16	17	18	
21	15	15	16	16	17	18	17	18	18	18	18	18	18	17	17	18	18	17	16	17	17	17	16	17	17	
22	16	17	17	17	17	17	17	16	16	16	16	15	16	17	17	17	17	16	15	16	15	15	15	15	16	
23	15	15	16	16	15	15	15	15	14	14	15	M	16	16	17	17	17	17	17	17	17	17	15	15	16	
24	16	15	15	16	16	17	17	17	17	17	17	17	17	16	17	18	18	18	17	17	16	16	16	16	17	
25	15	16	16	16	16	16	16	17	16	16	17	16	16	16	17	17	17	17	17	16	16	16	16	15	16	
26	15	15	16	16	16	16	14	15	16	16	15	14	14	15	16	17	17	17	17	17	17	18	17	18	16	
27	18	18	19	19	20	20	20	20	20	20	20	19	19	19	16	17	M	15	17	16	15	15	15	15	18	
28	15	15	15	15	16	16	16	16	17	17	16	16	16	15	16	16	16	16	16	15	14	14	14	14	16	
29	14	15	14	14	14	15	16	17	19	20	19	18	18	17	17	17	17	18	17	15	15	16	16	16	16	
30	16	17	17	17	17	17	17	18	18	18	18	18	18	17	18	18	17	17	17	16	16	16	16	16	17	
31	16	15	16	17	17	17	17	17	17	17	16	17	17	18	18	18	18	18	18	17	17	17	17	17	17	

MONTHLY STATISTICS:

GEOM	ARITH-----PERCENTILES-----								-----RANGE-----				STN GEOM	PERCENT	NO. OF TIMES	
MEAN	MEDIAN	MEAN	50	90	95	98	99	1-HR	24-HR	DEVIATION	VALID DATA	ABOVE	LIMIT	LEVEL		
15	15	15	15	18	19	20	20	9	-	25	11	-	19	1	100	0

- NOTES: 1. FLAGS FOR INVALID DATA :
- D: DYNAMIC CALIBRATION
 - T: TELEMETRY/DATALOGGR FAULT
 - M: MAINTENANCE OR ANALYZER FAULT
 - P: POWER FAILURE

THE HONGKONG ELECTRIC COMPANY, LTD.
AIR QUALITY DATA MONTHLY TIME SERIES REPORT
MONTH: JANUARY

STATION : VICTORIA PEAK
POLLUTANT : NITROGEN DIOXIDE

YEAR : 2025
UNIT : MICROGRAMS/CUBIC METER

DAY	1	2	3	4	5	6	7	8	9	10	11	12	13	14	15	16	17	18	19	20	21	22	23	24	MEAN
1	4	M	5	4	3	3	3	4	5	5	5	5	6	7	7	6	6	7	7	7	6	5	5	3	5
2	3	3	4	3	3	4	6	10	12	12	12	15	19	14	19	27	30	35	37	32	30	43	20	11	17
3	9	8	4	2	2	2	4	8	9	10	11	9	8	9	11	12	17	17	14	18	15	10	5	5	9
4	3	3	3	3	3	3	4	6	8	12	9	8	7	8	9	9	6	9	10	10	6	5	4	3	6
5	3	4	3	7	11	14	5	7	12	7	13	12	10	10	7	11	14	18	16	13	13	28	26	12	12
6	8	6	5	5	4	4	5	12	23	32	24	12	7	6	7	5	3	3	7	11	8	4	5	6	9
7	4	4	3	2	2	3	3	4	7	9	9	8	7	8	9	13	9	8	7	7	6	5	5	4	6
8	3	2	2	3	3	3	4	6	9	13	11	13	11	9	10	11	12	15	14	12	6	6	6	5	8
9	5	4	4	4	4	6	9	9	10	12	12	11	10	7	14	16	18	20	28	19	13	15	13	9	11
10	10	7	6	6	6	5	6	10	11	13	11	10	10	10	9	10	13	14	15	13	11	9	9	7	10
11	8	6	5	5	3	5	6	11	13	14	13	12	10	10	10	12	16	17	12	9	10	8	7	5	9
12	5	4	3	3	4	3	5	8	8	8	9	6	4	4	4	6	8	11	12	6	8	4	2	4	6
13	4	5	3	3	4	3	3	5	6	10	7	6	5	6	7	7	9	15	8	6	5	6	4	3	6
14	2	2	2	2	2	2	2	3	4	6	6	6	6	6	7	8	11	9	5	9	10	13	6	7	6
15	9	9	11	9	12	9	9	12	14	15	12	12	9	8	7	10	13	15	16	12	11	8	7	7	11
16	6	5	4	4	4	4	8	14	17	15	15	12	16	17	16	17	17	23	30	34	27	15	10	7	14
17	6	4	3	4	6	6	5	8	10	15	9	9	6	4	3	4	4	5	4	5	4	4	6	5	6
18	4	4	3	3	3	3	4	6	10	18	14	13	14	13	12	9	12	14	10	16	16	14	9	9	10
19	9	5	4	6	7	6	7	6	7	13	16	13	9	19	17	17	33	29	27	14	16	12	11	32	14
20	12	6	4	4	3	3	4	4	6	8	0	0	0	0	0	1	1	3	4	5	3	0	0	0	3
21	0	0	0	0	0	0	0	0	0	0	0	0	0	0	0	0	2	1	0	0	0	0	0	0	0
22	0	0	0	0	0	0	0	0	0	0	0	0	0	0	0	1	1	0	0	0	0	0	0	0	0
23	0	0	0	0	0	0	0	0	0	0	1	M	0	0	1	0	0	2	2	1	0	0	0	0	0
24	0	0	0	0	0	0	0	0	0	0	0	0	0	0	0	0	0	0	0	0	0	0	0	0	0
25	0	0	0	0	0	0	0	0	0	0	0	0	0	0	0	0	0	0	0	0	0	0	0	0	0
26	0	0	0	0	0	0	0	0	0	0	0	0	0	0	0	0	0	0	0	0	0	0	0	0	0
27	0	0	0	0	0	0	0	0	0	0	0	0	0	0	0	0	0	0	1	1	1	0	0	0	0
28	0	0	0	0	0	0	0	0	0	0	0	0	0	0	0	0	0	0	0	0	0	0	0	0	0
29	0	0	0	0	0	0	0	0	0	0	0	0	0	0	0	0	0	0	0	0	0	0	0	0	0
30	0	0	0	0	0	0	0	0	0	0	0	0	0	0	0	0	0	0	0	0	0	0	0	0	0
31	0	0	0	0	0	0	0	0	0	0	0	0	0	0	0	0	0	0	0	0	0	0	0	0	0

MONTHLY STATISTICS:

GEOM	ARITH-----PERCENTILES-----							-----RANGE-----				STN GEOM	PERCENT	NO. OF TIMES		
MEAN	MEDIAN	MEAN	50	90	95	98	99	1-HR		24-HR	DEVIATION	VALID DATA	ABOVE	LIMIT LEVEL		
7	4	6	4	14	17	27	31	0	-	43	0	-	17	2	100	0

NOTES: 1. FLAGS FOR INVALID DATA :
D: DYNAMIC CALIBRATION
T: TELEMETRY/DATALOGGR FAULT
M: MAINTENANCE OR ANALYZER FAULT
P: POWER FAILURE

THE HONGKONG ELECTRIC COMPANY, LTD.
AIR QUALITY DATA MONTHLY TIME SERIES REPORT

STATION : CHUNG HOM KOK ZONE SUBSTATION
POLLUTANT : SULPHUR DIOXIDE

MONTH: JANUARY

YEAR : 2025

UNIT : MICROGRAMS/CUBIC METER

DAY	1	2	3	4	5	6	7	8	9	10	11	12	13	14	15	16	17	18	19	20	21	22	23	24	MEAN
1	2	2	1	1	1	1	1	1	1	1	2	2	1	1	1	1	0	0	0	0	0	0	1	1	1
2	1	1	1	1	1	1	1	2	3	4	4	4	3	3	3	3	3	4	3	2	2	3	3	4	3
3	3	2	3	3	3	3	3	4	4	4	5	5	4	4	4	4	4	3	4	2	3	3	3	2	3
4	1	1	1	1	2	1	1	1	1	2	3	4	3	3	3	3	2	2	2	1	1	0	0	2	2
5	1	1	1	0	1	2	3	3	3	3	3	3	3	2	3	3	2	2	2	4	5	4	4	3	3
6	5	3	3	3	3	2	2	3	3	3	3	4	3	2	2	2	2	2	3	3	2	1	0	2	3
7	1	1	1	1	1	1	1	1	1	2	2	2	2	2	2	2	2	2	2	2	1	1	1	1	1
8	1	1	1	1	1	1	1	2	2	3	3	3	2	2	2	2	2	2	1	1	1	1	1	3	2
9	1	1	1	1	1	2	2	3	3	3	3	4	4	3	3	3	3	2	2	1	1	1	1	3	2
10	4	3	3	3	3	3	2	1	1	1	1	1	1	2	1	1	1	1	1	1	1	1	1	2	2
11	1	2	2	2	2	2	2	2	2	3	2	3	4	4	3	3	3	2	2	1	1	1	1	0	2
12	1	1	1	1	1	1	1	1	2	1	1	1	1	1	1	1	1	1	1	0	0	0	0	1	1
13	0	0	0	0	0	1	2	3	2	3	3	2	2	2	2	2	2	1	1	0	0	0	0	0	1
14	0	0	0	0	1	1	1	1	1	1	1	1	1	1	0	0	1	1	0	1	1	1	1	3	1
15	2	2	2	2	2	1	1	0	1	3	3	3	2	2	2	2	3	3	3	0	0	0	0	0	2
16	2	2	1	1	2	2	2	2	2	2	3	4	4	2	2	2	2	3	4	6	4	2	2	2	3
17	0	0	0	1	1	2	2	2	2	2	2	2	2	2	M	1	2	2	1	1	1	1	0	1	1
18	1	1	1	1	1	2	2	2	2	3	4	4	3	2	2	2	2	2	1	1	1	1	1	0	2
19	1	2	2	1	2	2	2	2	3	5	6	6	3	3	2	3	6	10	15	12	12	9	6	5	5
20	4	4	2	1	1	1	1	1	2	3	3	3	2	2	2	2	2	2	2	2	1	2	2	2	2
21	0	1	0	0	1	1	1	1	1	2	2	2	2	2	2	2	1	1	1	1	1	1	1	0	1
22	1	1	1	1	1	1	1	1	1	1	1	1	1	0	0	0	1	1	0	0	0	0	0	2	1
23	1	1	0	0	0	0	0	0	0	0	0	0	1	1	1	1	0	1	1	1	1	1	1	1	1
24	1	0	0	0	0	0	0	0	0	0	1	1	1	0	0	0	0	1	1	0	0	0	0	1	0
25	0	0	0	0	0	0	0	0	0	0	0	0	0	0	0	0	0	0	1	0	0	0	0	0	0
26	0	0	0	0	0	0	0	0	0	0	1	0	0	0	0	0	0	0	0	0	0	0	0	1	0
27	0	0	0	0	0	0	0	0	0	0	0	0	0	0	0	0	0	0	0	0	0	0	0	1	0
28	0	0	0	0	0	0	0	0	0	0	0	0	0	0	0	0	0	1	2	2	1	0	0	2	0
29	1	1	0	0	1	2	2	4	5	5	4	4	4	3	2	2	2	1	1	0	0	0	0	1	2
30	0	0	0	0	0	0	0	0	0	1	1	1	1	1	0	0	0	0	0	0	0	0	0	0	0
31	0	0	0	0	0	0	0	0	0	1	0	0	1	0	0	0	1	0	0	0	0	0	0	1	0

MONTHLY STATISTICS:

GEOM	ARITH-----PERCENTILES-----							-----RANGE-----					STN GEOM	PERCENT	NO. OF TIMES	
MEAN	MEDIAN	MEAN	50	90	95	98	99	1-HR		24-HR			DEVIATION	VALID DATA	ABOVE LIMIT LEVEL	
2	1	1	1	3	4	5	6	0	-	15	0	-	5	2	100	0

NOTES:

1. FLAGS FOR INVALID DATA :
 - D: DYNAMIC CALIBRATION
 - T: TELEMETRY/DATALOGGR FAULT
 - M: MAINTENANCE OR ANALYZER FAULT
 - P: POWER FAILURE

THE HONGKONG ELECTRIC COMPANY, LTD.
AIR QUALITY DATA MONTHLY TIME SERIES REPORT

STATION : CHUNG HOM KOK ZONE SUBSTATION
POLLUTANT : NITROGEN DIOXIDE

MONTH: JANUARY

YEAR : 2025

UNIT : MICROGRAMS/CUBIC METER

DAY	1	2	3	4	5	6	7	8	9	10	11	12	13	14	15	16	17	18	19	20	21	22	23	24	MEAN
1	68	M	50	46	44	16	11	13	14	14	16	16	15	18	21	21	16	14	15	14	17	18	13	12	22
2	13	15	20	15	14	16	20	23	27	29	29	26	25	24	28	32	43	78	89	53	57	59	50	32	34
3	25	23	16	9	8	8	11	14	19	21	27	31	28	22	22	20	23	26	38	29	23	18	19	18	21
4	12	13	12	15	18	13	15	16	22	21	21	21	21	19	20	18	18	21	21	21	17	13	13	12	17
5	14	14	15	14	25	23	14	20	21	23	51	32	25	24	24	26	32	28	47	59	59	41	28	25	29
6	47	16	32	17	12	11	12	17	33	31	24	23	16	14	14	15	20	17	14	15	19	18	14	17	20
7	15	16	17	15	15	13	12	12	16	20	16	14	15	15	17	17	19	27	24	22	17	14	13	15	17
8	13	12	13	17	14	14	15	17	20	21	21	23	19	21	18	21	21	21	20	21	18	15	16	17	18
9	24	24	21	17	18	21	29	26	25	29	24	21	16	16	19	21	23	25	31	20	18	20	24	23	22
10	19	17	16	19	16	18	20	21	25	21	20	20	18	18	18	24	24	29	31	23	20	17	19	19	21
11	20	17	16	14	13	13	20	30	34	43	37	38	57	55	40	40	48	45	39	27	25	20	14	11	30
12	12	12	13	12	14	12	13	17	22	13	11	11	11	9	12	14	17	16	17	10	13	12	11	12	13
13	13	15	14	17	17	15	14	18	27	28	20	12	12	13	12	17	15	16	14	14	13	12	13	11	16
14	9	10	9	11	12	13	13	12	14	15	12	13	13	14	9	14	12	11	15	17	29	37	32	18	15
15	21	M	23	21	22	25	28	31	36	28	22	18	17	15	16	21	20	24	28	23	21	23	26	22	23
16	22	18	16	15	14	15	16	20	31	35	36	68	51	21	23	23	26	46	71	101	40	22	27	24	33
17	21	18	19	20	20	21	18	17	20	23	20	19	17	14	16	M	17	21	17	14	12	11	11	13	17
18	17	14	16	15	15	15	17	17	22	26	28	25	22	16	16	20	20	20	14	14	12	15	18	21	18
19	18	17	15	22	17	18	21	29	48	64	75	56	32	23	21	34	79	156	162	117	109	77	32	21	53
20	20	22	16	14	14	14	16	21	24	22	21	19	15	16	15	17	22	26	30	16	14	15	18	20	19
21	18	16	15	13	16	13	14	18	17	14	14	13	14	16	16	19	21	19	16	15	15	14	15	14	16
22	13	13	13	12	12	12	15	11	11	11	12	11	12	11	13	24	23	21	20	18	13	13	12	13	14
23	13	15	18	10	8	5	7	8	13	17	20	21	13	11	10	16	16	16	14	23	16	11	13	12	14
24	14	11	10	8	9	10	9	10	9	10	12	12	9	8	9	9	9	12	10	10	10	9	8	8	10
25	7	7	6	5	5	5	4	5	6	6	6	6	6	6	6	6	5	5	8	10	8	7	6	7	6
26	7	8	8	7	6	5	6	6	9	16	33	28	14	19	19	16	16	15	16	13	9	8	8	9	13
27	8	7	7	7	7	7	8	7	7	6	10	12	9	8	7	11	12	11	8	9	13	11	8	7	9
28	7	6	5	4	4	5	7	7	10	9	9	8	5	6	8	8	10	28	56	37	16	12	14	17	12
29	20	M	15	13	8	9	9	9	9	10	7	7	7	6	6	7	8	7	7	5	4	4	5	4	8
30	5	5	6	5	6	6	6	6	6	6	6	9	7	7	7	7	6	6	5	5	4	5	5	5	6
31	5	5	5	4	4	5	4	4	5	5	6	6	5	5	5	6	7	6	6	5	4	4	4	6	5

MONTHLY STATISTICS:

GEOM	ARITH-----PERCENTILES-----										RANGE-----		STN GEOM	PERCENT	NO. OF TIMES	
MEAN	MEDIAN	MEAN	50	90	95	98	99	1-HR		24-HR		DEVIATION	VALID DATA	ABOVE	LIMIT LEVEL	
15	16	18	16	29	41	59	78	4	-	162	5	-	53	2	99	0

- NOTES: 1. FLAGS FOR INVALID DATA :
- D: DYNAMIC CALIBRATION
 - T: TELEMETRY/DATALOGGR FAULT
 - M: MAINTENANCE OR ANALYZER FAULT
 - P: POWER FAILURE

THE HONGKONG ELECTRIC COMPANY, LTD.
AIR QUALITY DATA MONTHLY TIME SERIES REPORT
MONTH: JANUARY

STATION : VICTORIA ROAD SUBSTATION
POLLUTANT : SULPHUR DIOXIDE

YEAR : 2025
UNIT : MICROGRAMS/CUBIC METER

DAY	1	2	3	4	5	6	7	8	9	10	11	12	13	14	15	16	17	18	19	20	21	22	23	24	MEAN
1	1	1	1	1	1	1	1	1	0	1	1	1	1	1	0	1	1	1	0	1	1	1	1	1	1
2	1	1	1	1	0	1	1	1	1	1	1	1	1	1	1	2	1	2	1	1	1	1	1	1	1
3	1	1	1	1	1	1	1	1	1	1	1	1	1	1	1	1	1	1	1	1	1	1	1	1	1
4	0	1	1	1	1	1	1	0	1	1	1	1	1	1	1	1	0	1	1	1	1	1	1	1	1
5	1	1	1	1	1	1	1	1	1	1	1	1	1	1	2	1	1	1	1	1	1	1	1	1	1
6	1	1	2	2	1	1	1	1	1	1	2	2	1	2	2	1	1	1	1	1	1	1	1	1	1
7	1	1	0	1	1	1	1	1	1	1	1	1	1	1	1	1	1	1	1	1	1	1	1	1	1
8	0	1	1	1	1	1	1	1	1	1	1	1	1	1	1	1	1	1	1	1	1	1	1	1	1
9	1	1	0	1	1	1	1	1	1	1	1	1	1	1	1	2	1	1	1	1	1	1	1	1	1
10	1	1	1	1	1	1	1	1	1	1	1	1	1	1	1	1	1	1	1	1	1	1	1	1	1
11	1	1	1	1	1	0	0	0	1	1	1	1	1	1	1	1	1	1	1	1	1	1	1	1	1
12	0	1	1	1	0	1	1	1	1	1	1	1	0	1	1	1	1	1	1	1	1	1	1	1	1
13	0	0	0	1	0	1	1	1	1	1	0	1	1	1	1	0	2	1	1	0	1	0	1	1	1
14	0	1	0	1	1	1	1	0	1	1	1	0	1	1	1	1	0	1	1	1	1	1	1	1	1
15	0	1	1	1	1	1	1	1	1	1	1	1	0	1	0	1	1	1	1	1	0	1	1	1	1
16	1	1	0	1	1	0	1	1	1	1	1	1	1	1	2	2	2	2	1	1	1	1	1	0	1
17	1	1	1	0	1	1	1	1	1	1	2	1	1	1	1	1	1	1	1	1	1	0	1	1	1
18	0	0	1	1	1	1	1	1	1	1	1	1	2	1	1	1	1	1	1	1	1	1	0	1	1
19	1	1	1	1	1	1	1	1	1	2	3	3	2	2	2	2	2	2	1	1	1	1	1	1	1
20	1	1	1	1	1	1	1	1	1	1	1	1	1	1	1	1	1	1	1	1	1	1	1	1	1
21	0	1	1	1	1	1	1	1	1	1	1	0	1	1	1	1	1	1	1	1	1	1	1	1	1
22	1	1	1	1	1	1	1	1	1	1	1	1	0	0	0	1	1	0	1	1	1	1	1	1	1
23	1	1	1	1	1	1	1	1	1	1	1	1	1	1	1	1	2	2	1	1	1	1	1	1	1
24	1	1	1	1	1	1	1	1	1	1	1	1	1	1	1	1	1	1	1	1	1	1	1	1	1
25	1	1	1	1	1	1	1	1	1	1	1	1	1	1	1	1	0	1	1	1	1	1	1	1	1
26	1	0	1	1	1	1	1	1	1	1	1	1	1	1	1	1	1	0	1	1	1	1	1	1	1
27	1	1	1	1	1	1	1	1	1	1	1	1	0	1	1	1	1	1	1	1	1	1	1	1	1
28	1	1	1	1	1	1	1	1	1	1	1	1	1	1	1	1	1	1	1	1	1	1	1	1	1
29	1	1	1	1	1	1	1	1	1	1	1	1	1	1	1	1	1	1	1	1	1	1	1	1	1
30	0	1	1	1	1	0	1	1	1	0	1	1	1	1	1	1	1	1	1	1	1	1	1	1	1
31	1	1	1	1	1	0	1	1	1	1	1	1	1	1	1	1	1	1	1	1	1	1	1	1	1

MONTHLY STATISTICS:

GEOM	ARITH-----PERCENTILES-----							RANGE-----				STN GEOM	PERCENT	NO. OF TIMES		
MEAN	MEDIAN	MEAN	50	90	95	98	99	1-HR		24-HR		DEVIATION	VALID DATA	ABOVE LIMIT LEVEL		
1	1	1	1	1	1	2	2	0	-	3	1	-	1	1	100	0

NOTES: 1. FLAGS FOR INVALID DATA :
D: DYNAMIC CALIBRATION
T: TELEMETRY/DATALOGGR FAULT
M: MAINTENANCE OR ANALYZER FAULT
P: POWER FAILURE

THE HONGKONG ELECTRIC COMPANY, LTD.
AIR QUALITY DATA MONTHLY TIME SERIES REPORT
MONTH: JANUARY

STATION : VICTORIA ROAD SUBSTATION
POLLUTANT : NITROGEN DIOXIDE

YEAR : 2025
UNIT : MICROGRAMS/CUBIC METER

DAY	1	2	3	4	5	6	7	8	9	10	11	12	13	14	15	16	17	18	19	20	21	22	23	24	MEAN
1	8	M	8	7	7	6	6	7	7	8	8	8	8	8	9	10	10	8	7	8	8	8	7	7	8
2	7	6	5	5	5	6	9	14	16	12	17	23	23	20	32	37	33	42	42	41	33	34	39	33	22
3	17	10	7	6	4	5	6	8	11	14	12	13	11	11	12	14	15	20	15	17	17	21	12	7	12
4	6	5	5	4	5	6	5	7	10	10	10	9	9	10	12	14	12	10	9	10	10	8	8	7	8
5	6	6	6	8	8	10	9	13	16	21	23	21	24	27	26	24	21	22	14	13	16	23	33	39	18
6	44	38	43	28	12	13	16	31	30	30	32	31	21	23	22	17	20	16	19	15	15	10	9	7	23
7	7	7	7	7	6	7	8	10	11	16	16	17	17	20	19	24	17	15	18	13	11	9	8	7	12
8	6	6	5	6	6	6	6	10	11	13	15	16	15	13	13	11	12	16	17	13	11	9	9	9	11
9	8	8	8	8	11	9	8	19	22	15	17	18	16	14	18	28	39	24	23	24	16	13	14	13	16
10	10	8	7	6	6	6	7	11	13	14	14	12	12	15	15	18	18	14	14	13	11	9	9	8	11
11	8	7	6	5	5	5	6	9	11	13	16	15	17	14	13	13	12	12	10	8	8	8	7	6	10
12	6	5	5	4	4	4	5	7	8	8	7	6	5	5	12	11	10	11	14	10	7	7	5	7	7
13	5	5	4	4	4	5	7	8	13	14	12	13	11	11	12	18	15	15	13	11	10	10	8	7	10
14	6	5	5	5	6	6	6	8	11	12	11	11	15	13	18	22	15	16	13	16	30	35	31	30	14
15	29	M	32	29	24	15	11	15	17	15	14	14	13	10	11	11	13	15	17	15	12	10	9	10	16
16	8	6	6	5	5	4	6	10	18	20	20	19	25	21	32	21	24	28	25	25	27	19	15	11	17
17	10	8	7	7	7	8	8	12	22	21	31	18	16	12	10	13	15	14	11	10	8	7	8	8	12
18	7	7	6	6	5	5	7	10	9	13	24	22	30	16	14	17	16	14	14	19	18	20	21	14	14
19	19	17	11	15	15	13	11	15	16	24	34	43	44	35	34	42	49	26	29	29	19	21	25	21	25
20	29	27	12	8	7	6	8	14	16	15	17	14	14	15	17	16	16	24	34	30	27	26	18	10	18
21	7	5	5	5	6	6	6	9	11	13	12	13	10	15	16	16	19	19	15	12	9	8	9	7	11
22	7	7	7	5	6	8	8	10	13	12	13	13	13	12	20	24	23	25	23	14	10	9	11	12	13
23	9	13	19	20	12	6	8	13	17	20	25	22	24	28	28	30	32	28	31	27	11	12	18	7	19
24	7	6	4	4	3	3	4	6	7	8	9	10	10	14	14	12	14	13	13	9	7	5	5	4	8
25	4	3	3	2	2	3	4	4	8	8	9	9	9	7	7	10	11	7	7	6	6	5	4	4	6
26	3	3	3	3	3	3	3	4	4	7	10	8	6	8	7	6	6	6	7	6	6	5	7	5	5
27	5	4	3	3	3	4	5	6	7	8	9	8	7	7	7	7	7	11	13	13	15	12	9	6	7
28	6	7	6	5	5	5	4	7	9	14	17	9	5	4	5	5	12	13	10	16	14	16	16	14	9
29	11	M	6	5	3	3	4	4	5	4	4	3	4	3	4	3	3	3	4	4	3	3	3	3	4
30	3	3	3	3	2	2	3	4	4	6	6	5	7	5	5	4	4	5	3	3	3	3	3	3	4
31	3	2	2	2	2	2	2	2	2	2	3	3	3	3	3	4	6	8	11	14	12	8	7	18	5

MONTHLY STATISTICS:

GEOM	ARITH-----PERCENTILES-----							-----RANGE-----					STN GEOM	PERCENT	NO. OF TIMES	
MEAN	MEDIAN	MEAN	50	90	95	98	99	1-HR		24-HR			DEVIATION	VALID DATA	ABOVE LIMIT LEVEL	
10	10	12	10	24	30	35	42	2	-	49	4	-	25	2	100	0

- NOTES: 1. FLAGS FOR INVALID DATA :
D: DYNAMIC CALIBRATION
T: TELEMETRY/DATALOGGR FAULT
M: MAINTENANCE OR ANALYZER FAULT
P: POWER FAILURE

THE HONGKONG ELECTRIC COMPANY, LTD.
AIR QUALITY DATA MONTHLY TIME SERIES REPORT
MONTH: JANUARY

STATION : AP LEI CHAU
POLLUTANT : SULPHUR DIOXIDE

YEAR : 2025
UNIT : MICROGRAMS/CUBIC METER

DAY	1	2	3	4	5	6	7	8	9	10	11	12	13	14	15	16	17	18	19	20	21	22	23	24	MEAN
1	8	8	8	8	8	7	8	8	8	8	8	8	8	8	7	7	7	7	7	7	7	7	7	8	8
2	7	7	7	7	7	8	8	8	8	10	10	10	11	10	13	14	11	15	12	11	11	11	11	11	10
3	10	10	10	10	10	9	9	10	10	11	11	11	11	11	11	12	12	10	10	10	9	9	9	9	10
4	8	8	8	8	8	8	7	7	8	9	10	10	10	10	9	9	8	9	8	8	8	7	7	8	8
5	8	8	8	8	8	8	9	9	11	11	12	11	11	11	11	11	13	10	11	12	13	11	11	14	10
6	12	12	15	12	10	9	9	10	11	11	13	15	11	10	9	9	9	9	9	9	8	8	8	9	10
7	8	8	8	7	8	8	8	8	8	9	9	10	11	10	10	9	8	8	8	8	8	8	8	8	8
8	8	8	8	8	8	8	8	8	8	9	9	10	10	9	9	9	9	8	8	8	7	7	7	8	8
9	8	8	8	8	8	8	9	9	10	11	10	10	10	10	10	11	10	10	10	9	8	8	9	10	9
10	10	10	10	10	10	9	9	8	8	8	8	9	8	10	11	9	9	8	8	8	8	8	8	9	9
11	8	8	8	8	8	9	9	9	9	9	10	10	11	10	10	10	10	9	9	8	8	8	8	10	9
12	8	9	8	8	9	9	9	9	9	9	8	7	7	7	8	8	8	8	8	7	7	7	7	8	8
13	7	7	7	7	7	8	9	9	9	9	9	8	8	8	8	8	8	8	8	7	7	8	7	7	8
14	7	7	7	7	7	8	8	8	7	7	7	7	7	7	7	7	7	9	8	7	7	8	10	9	8
15	9	11	12	10	9	9	9	9	9	9	10	9	9	9	9	9	10	9	9	8	7	8	8	9	9
16	9	8	8	8	8	8	8	8	9	9	10	12	12	12	11	11	12	12	12	12	13	11	10	9	10
17	8	7	8	8	8	9	9	9	9	9	10	9	9	9	8	8	8	8	8	8	8	8	7	8	8
18	8	8	8	8	8	8	8	8	9	10	11	10	10	9	9	9	9	8	8	8	8	8	8	9	9
19	8	8	8	8	9	9	9	10	14	17	28	20	15	12	12	15	15	13	10	11	13	12	13	12	13
20	11	10	10	8	8	8	8	8	9	9	10	10	9	9	9	9	10	11	10	10	10	10	8	9	9
21	8	8	7	7	7	8	8	8	8	8	8	9	9	8	8	9	9	7	8	8	8	8	8	7	8
22	8	7	7	7	7	7	7	7	7	7	7	8	7	7	7	7	7	7	7	7	7	7	7	7	7
23	8	8	8	8	8	7	8	8	8	9	9	11	10	10	9	10	9	8	8	8	8	8	8	8	9
24	8	8	8	7	8	8	7	7	7	7	8	M	8	8	8	8	8	8	8	7	7	7	7	9	8
25	8	7	7	7	7	7	7	7	7	7	7	7	7	7	7	7	7	7	7	7	7	7	7	8	7
26	7	7	7	7	7	7	7	7	7	7	8	7	7	7	7	7	7	7	7	7	7	7	7	7	7
27	7	7	7	7	7	7	7	7	7	7	7	7	7	7	7	7	7	7	7	7	7	7	7	8	7
28	7	7	7	7	7	7	7	7	7	7	8	7	7	7	7	7	8	9	8	8	8	8	8	8	7
29	8	7	8	7	7	8	9	10	11	12	11	10	9	10	9	9	8	8	8	7	7	7	7	8	9
30	7	7	7	7	7	7	7	7	8	8	8	8	8	7	7	7	7	7	7	7	7	7	7	7	7
31	7	7	7	7	7	7	7	7	7	7	7	7	7	7	7	7	7	7	7	7	7	7	8	8	7

MONTHLY STATISTICS:

GEOM	ARITH-----PERCENTILES-----							-----RANGE-----					STN GEOM	PERCENT	NO. OF TIMES	
MEAN	MEDIAN	MEAN	50	90	95	98	99	1-HR		24-HR			DEVIATION	VALID DATA	ABOVE LIMIT LEVEL	
8	8	9	8	11	12	13	15	7	-	28	7	-	13	1	100	0

- NOTES: 1. FLAGS FOR INVALID DATA :
- D: DYNAMIC CALIBRATION
 - T: TELEMETRY/DATALOGGR FAULT
 - M: MAINTENANCE OR ANALYZER FAULT
 - P: POWER FAILURE

THE HONGKONG ELECTRIC COMPANY, LTD.
AIR QUALITY DATA MONTHLY TIME SERIES REPORT
MONTH: JANUARY

STATION : AP LEI CHAU
POLLUTANT : NITROGEN DIOXIDE

YEAR : 2025
UNIT : MICROGRAMS/CUBIC METER

DAY	1	2	3	4	5	6	7	8	9	10	11	12	13	14	15	16	17	18	19	20	21	22	23	24	MEAN
1	10	14	11	10	9	10	9	10	11	11	12	12	11	10	13	12	10	10	10	9	9	12	11	10	11
2	10	9	10	9	9	10	13	16	16	20	26	26	33	23	49	69	61	94	95	78	56	88	82	47	40
3	28	25	13	7	6	8	13	17	24	28	27	24	20	20	27	31	43	23	30	44	40	20	17	14	23
4	8	8	9	9	11	10	11	15	17	15	15	13	12	12	12	10	8	14	19	19	15	9	9	10	12
5	10	11	12	18	19	24	16	31	43	56	59	44	33	33	25	41	48	26	40	50	70	75	74	129	41
6	57	53	72	38	14	14	21	34	54	67	70	60	15	15	14	6	7	6	9	23	19	13	16	12	30
7	11	M	12	10	9	9	10	12	18	17	11	9	9	9	13	13	15	14	16	12	10	9	10	12	
8	9	8	8	9	9	9	12	17	22	20	21	22	33	12	12	11	11	13	16	22	17	19	15	15	15
9	13	12	11	13	29	21	31	28	27	19	17	13	11	12	12	M	27	31	33	29	18	18	17	17	20
10	17	17	13	16	14	14	17	22	26	26	28	24	23	44	36	25	21	35	29	33	27	19	18	17	23
11	18	14	12	12	11	13	17	24	24	32	38	33	37	35	27	32	26	29	22	22	20	17	13	14	23
12	17	15	15	13	13	13	14	20	23	19	18	12	5	5	5	8	8	8	10	15	15	16	15	13	13
13	13	12	11	10	11	10	15	19	19	15	15	9	6	5	6	8	8	13	15	13	10	10	7	6	11
14	6	6	5	6	6	8	8	10	11	11	12	12	13	10	9	25	19	36	26	25	47	57	55	34	19
15	60	65	71	45	34	28	25	19	34	30	29	23	18	21	18	22	28	28	33	19	14	14	17	15	30
16	15	13	11	9	9	11	20	46	46	40	42	50	44	33	30	28	38	40	43	49	82	68	25	18	34
17	18	12	10	12	13	15	14	20	28	26	22	13	11	7	6	6	7	9	9	13	13	15	11	10	13
18	11	11	10	9	9	11	14	17	25	18	25	25	18	11	12	12	15	13	14	27	26	29	28	27	17
19	23	20	39	22	39	30	60	73	67	73	104	88	52	30	26	56	62	65	38	66	65	76	51	65	54
20	98	29	16	12	11	12	16	28	26	15	18	13	12	12	11	9	29	54	53	89	93	88	18	20	33
21	17	M	9	7	9	10	12	18	16	12	14	8	8	11	10	9	19	25	17	10	8	8	12	14	12
22	14	7	7	5	6	9	12	12	10	9	10	12	13	16	21	20	29	33	29	25	16	14	12	20	15
23	20	36	17	34	9	4	8	24	33	51	38	43	40	26	36	63	32	11	7	8	8	6	7	6	24
24	7	7	5	3	4	4	5	6	6	4	5	M	4	3	3	3	5	8	7	6	6	4	4	6	5
25	5	4	3	3	3	3	3	4	5	6	7	5	6	3	5	5	6	6	6	4	4	3	3	4	4
26	3	4	4	4	3	4	4	5	7	22	27	19	11	9	12	8	9	11	9	11	12	11	8	10	9
27	9	8	7	6	7	10	10	10	11	11	13	15	14	14	7	8	18	13	7	24	34	23	18	14	13
28	13	8	6	5	5	9	17	17	21	18	16	3	4	4	2	3	18	32	15	16	20	20	18	13	13
29	18	13	7	7	5	5	7	6	7	6	9	3	3	3	2	2	3	3	4	3	2	2	3	3	5
30	4	3	3	3	3	4	5	5	4	4	6	11	8	3	3	4	7	7	7	7	2	3	4	4	5
31	4	4	3	2	2	2	3	3	2	3	3	2	2	2	2	4	10	18	12	8	5	5	7	11	5

MONTHLY STATISTICS:

GEOM	ARITH-----PERCENTILES-----							RANGE-----					STN GEOM	PERCENT	NO. OF TIMES	
MEAN	MEDIAN	MEAN	50	90	95	98	99	1-HR		24-HR			DEVIATION	VALID DATA	ABOVE LIMIT LEVEL	
13	13	19	13	40	59	74	88	2	-	129	4	-	54	2	99	0

- NOTES: 1. FLAGS FOR INVALID DATA :
- D: DYNAMIC CALIBRATION
 - T: TELEMETRY/DATALOGGR FAULT
 - M: MAINTENANCE OR ANALYZER FAULT
 - P: POWER FAILURE

THE HONGKONG ELECTRIC COMPANY, LTD.
AIR QUALITY DATA MONTHLY TIME SERIES REPORT
MONTH: JANUARY

STATION : CHEUNG CHAU
POLLUTANT : SULPHUR DIOXIDE

YEAR : 2025
UNIT : MICROGRAMS/CUBIC METER

DAY	1	2	3	4	5	6	7	8	9	10	11	12	13	14	15	16	17	18	19	20	21	22	23	24	MEAN	
1	1	1	1	1	1	1	1	1	1	1	1	1	1	1	1	1	1	0	0	0	0	0	0	0	1	1
2	0	0	0	1	1	1	1	1	2	2	2	4	4	5	4	3	4	3	2	3	3	4	4	3	2	
3	3	3	4	3	3	2	2	3	3	3	3	3	3	3	3	3	3	2	1	1	1	2	2	2	3	
4	1	1	1	1	1	1	1	0	1	2	2	3	3	2	2	2	2	2	2	2	1	0	0	0	1	
5	0	0	0	1	1	2	2	2	3	3	3	3	3	3	3	4	2	2	2	2	1	1	2	2	2	
6	3	3	3	3	3	3	3	2	3	3	3	4	4	3	3	3	2	2	2	2	1	2	1	1	3	
7	1	1	1	1	1	1	1	1	1	2	2	1	1	1	2	1	1	1	1	1	2	1	1	1	1	
8	1	1	1	1	1	1	1	1	1	2	2	3	3	2	2	2	2	1	1	1	1	1	1	1	1	
9	1	1	1	1	1	1	1	2	3	4	3	3	3	3	2	3	2	2	2	1	1	1	2	3	2	
10	3	3	3	2	2	2	2	2	1	1	1	1	1	1	1	2	1	1	1	1	1	1	1	1	2	
11	1	1	1	1	1	1	1	2	2	2	2	2	1	2	2	2	2	2	2	2	1	0	1	1	1	
12	1	2	7	6	5	5	5	6	6	4	3	2	0	1	1	1	1	1	1	3	2	1	0	0	3	
13	0	0	0	0	0	1	2	1	3	3	3	2	2	2	6	3	10	2	1	5	1	1	1	1	2	
14	0	0	0	0	0	0	1	1	1	1	1	1	2	1	1	1	1	1	1	2	1	1	1	1	1	
15	1	1	2	1	1	2	3	3	3	3	3	3	3	3	3	3	3	2	2	2	1	1	2	2	2	
16	2	2	2	1	1	1	1	1	2	2	2	2	2	2	3	3	3	2	2	1	1	1	1	2	2	
17	1	1	1	1	1	2	2	2	3	3	2	2	2	2	2	2	2	1	1	1	1	1	1	1	2	
18	1	0	0	1	1	1	1	1	2	4	3	3	3	2	3	3	3	2	1	1	1	1	1	1	2	
19	1	1	1	1	1	2	2	2	2	3	3	3	3	4	3	3	3	3	2	2	1	1	1	1	2	
20	1	2	3	3	2	2	2	2	2	3	3	3	2	2	2	3	3	2	2	2	1	3	2	2	2	
21	2	1	1	1	1	1	0	1	1	1	2	1	2	2	2	2	1	1	1	1	1	1	1	1	1	
22	1	1	1	0	1	1	1	1	1	1	1	1	1	1	1	M	0	1	1	1	1	1	1	1	1	
23	1	1	1	1	1	1	1	1	1	1	1	2	2	2	2	2	3	2	1	1	1	1	1	1	1	
24	1	1	1	1	2	2	1	1	1	1	1	1	1	1	2	2	1	1	1	1	1	1	0	1	1	
25	1	1	1	1	1	1	0	0	1	0	0	1	1	1	1	1	1	1	1	1	1	1	1	1	1	
26	1	1	1	1	0	0	0	0	0	0	0	1	1	1	1	1	1	0	0	0	0	0	0	0	0	
27	0	0	0	0	0	0	0	0	0	0	1	0	0	0	1	0	0	1	1	0	1	0	1	1	0	
28	0	0	0	0	0	0	0	0	0	1	0	0	1	1	1	1	0	0	0	0	0	0	0	1	0	
29	1	0	1	1	1	1	1	2	3	3	3	3	2	2	2	2	1	2	1	1	1	0	0	1	1	
30	0	0	0	0	0	0	0	0	0	1	1	1	1	1	1	1	1	1	1	0	0	0	0	1	0	
31	1	0	1	0	0	0	1	0	1	1	1	1	1	2	1	1	1	1	1	1	1	1	1	2	1	

MONTHLY STATISTICS:

GEOM	ARITH-----PERCENTILES-----							-----RANGE-----					STN GEOM	PERCENT	NO. OF TIMES	
MEAN	MEDIAN	MEAN	50	90	95	98	99	1-HR		24-HR			DEVIATION	VALID DATA	ABOVE LIMIT LEVEL	
2	1	1	1	3	3	4	5	0	-	10	0	-	3	2	100	0

- NOTES: 1. FLAGS FOR INVALID DATA :
- D: DYNAMIC CALIBRATION
 - T: TELEMETRY/DATALOGGR FAULT
 - M: MAINTENANCE OR ANALYZER FAULT
 - P: POWER FAILURE

THE HONGKONG ELECTRIC COMPANY, LTD.
AIR QUALITY DATA MONTHLY TIME SERIES REPORT
MONTH: JANUARY

STATION : CHEUNG CHAU
POLLUTANT : NITROGEN DIOXIDE

YEAR : 2025
UNIT : MICROGRAMS/CUBIC METER

DAY	1	2	3	4	5	6	7	8	9	10	11	12	13	14	15	16	17	18	19	20	21	22	23	24	MEAN
1	15	M	15	13	13	12	16	19	15	15	22	30	22	13	15	13	13	9	11	14	10	15	14	18	15
2	17	16	15	24	33	58	59	39	26	31	54	75	57	30	25	33	61	56	44	51	56	79	79	94	46
3	121	73	26	16	21	23	23	33	33	33	34	33	23	25	49	55	31	42	50	70	53	27	28	32	40
4	16	13	15	10	12	14	14	24	62	53	46	44	30	15	17	15	15	12	20	25	26	17	12	12	22
5	15	22	24	33	41	67	80	78	55	56	48	45	40	32	29	32	31	34	40	34	54	98	146	92	51
6	57	39	34	32	28	34	39	58	62	55	59	70	52	20	27	22	15	13	19	13	16	15	15	25	34
7	37	15	17	23	21	13	16	16	38	57	36	15	9	10	12	10	12	15	16	19	25	16	14	21	20
8	17	14	14	11	14	16	27	37	48	42	24	41	54	28	22	18	14	17	16	21	21	24	38	33	25
9	60	55	42	45	32	42	45	42	92	96	30	24	16	13	15	19	19	26	27	21	31	36	44	30	38
10	34	24	23	20	18	22	24	28	26	27	27	30	36	35	37	18	18	21	25	46	43	38	31	38	29
11	32	25	19	19	15	20	33	31	33	32	30	32	38	46	54	56	58	40	40	38	24	21	22	17	32
12	17	20	42	41	34	40	34	41	40	28	26	32	28	28	24	25	13	12	13	17	14	27	46	43	29
13	62	74	36	25	32	54	61	59	61	73	56	32	13	10	14	11	18	13	16	23	20	17	16	16	34
14	11	11	9	9	9	11	25	25	37	43	19	34	80	50	31	61	52	35	44	132	92	59	47	56	41
15	82	M	100	74	82	96	101	67	51	65	49	63	59	53	52	52	37	32	40	50	48	21	37	34	58
16	31	33	34	23	22	29	41	34	45	37	44	36	40	41	24	22	25	25	39	25	89	91	87	28	39
17	22	30	30	30	31	25	38	40	52	54	56	37	27	22	11	10	10	15	16	14	18	17	21	14	27
18	18	22	22	16	18	36	44	55	80	85	59	49	26	20	25	21	23	27	26	20	20	18	24	108	36
19	63	64	76	59	52	68	67	85	68	56	58	43	44	52	28	28	42	44	35	37	86	102	101	63	59
20	75	107	115	93	76	74	73	65	33	63	61	47	22	18	17	22	19	25	42	46	111	174	84	77	64
21	62	46	17	13	12	14	16	19	25	35	43	30	17	36	25	17	14	22	25	24	19	16	19	31	25
22	19	15	17	14	19	30	41	41	38	36	63	66	45	42	56	M	27	43	74	66	38	49	89	109	45
23	78	70	51	39	40	63	45	19	25	39	31	45	44	38	33	33	47	27	12	13	14	13	11	15	35
24	18	34	21	12	27	24	23	21	24	15	10	9	8	10	9	10	8	11	10	13	14	15	22	11	16
25	16	12	16	11	9	14	9	18	22	12	15	15	11	13	11	14	15	14	14	11	18	24	13	10	14
26	14	11	18	20	9	18	9	17	23	45	36	24	20	20	23	20	19	16	13	11	12	12	11	11	18
27	10	9	8	8	8	8	11	16	17	15	18	22	22	28	28	24	18	14	10	11	53	37	27	19	18
28	19	15	14	9	9	10	16	21	20	34	34	38	31	11	10	9	8	9	13	12	15	43	68	67	22
29	92	M	40	24	13	11	11	12	16	27	22	11	7	6	5	6	8	8	6	13	12	14	8	11	17
30	11	11	10	10	7	10	12	16	8	14	16	13	18	16	8	11	12	36	30	31	12	8	10	33	15
31	17	18	15	11	6	21	30	14	19	17	19	8	14	16	12	47	23	14	32	67	64	77	65	28	27

MONTHLY STATISTICS:

GEOM	ARITH-----PERCENTILES-----								-----RANGE-----				STN GEOM	PERCENT	NO. OF TIMES	
MEAN	MEDIAN	MEAN	50	90	95	98	99	1-HR	24-HR	DEVIATION	VALID DATA	ABOVE	LIMIT	LEVEL		
26	25	32	25	63	78	96	108	5	-	174	14	-	64	2	99	0

NOTES: 1. FLAGS FOR INVALID DATA :
D: DYNAMIC CALIBRATION
T: TELEMETRY/DATALOGGR FAULT
M: MAINTENANCE OR ANALYZER FAULT
P: POWER FAILURE

THE HONGKONG ELECTRIC COMPANY, LTD.
AIR QUALITY DATA MONTHLY TIME SERIES REPORT
MONTH: FEBRUARY

STATION : VICTORIA PEAK
POLLUTANT : SULPHUR DIOXIDE

YEAR : 2025
UNIT : MICROGRAMS/CUBIC METER

DAY	1	2	3	4	5	6	7	8	9	10	11	12	13	14	15	16	17	18	19	20	21	22	23	24	MEAN
1	17	17	17	17	17	17	17	17	17	17	17	18	18	18	18	19	19	18	19	18	18	18	18	18	18
2	18	17	18	18	18	18	17	18	17	17	17	17	18	18	18	18	18	18	17	18	17	17	16	17	18
3	16	17	16	17	17	17	17	16	17	16	16	16	17	16	17	17	17	17	16	16	17	17	17	17	17
4	17	17	17	17	18	18	18	18	18	18	18	17	17	17	17	17	17	17	17	17	16	17	16	16	17
5	16	17	16	17	18	18	18	18	19	19	19	19	18	18	18	19	18	18	17	17	17	17	17	17	18
6	17	18	18	18	18	18	17	16	17	18	18	17	18	19	19	19	19	20	18	19	18	18	17	18	18
7	17	17	17	17	18	18	17	17	17	17	16	17	17	17	18	18	17	17	18	17	16	16	17	17	17
8	18	18	18	19	19	19	19	20	20	20	18	17	18	17	18	17	18	16	17	16	16	15	15	15	18
9	15	15	16	16	16	16	16	16	17	17	18	18	18	18	18	19	18	18	19	18	16	16	17	18	17
10	17	18	18	19	19	19	19	20	20	20	20	20	18	18	19	19	19	19	18	18	17	17	18	17	19
11	17	17	17	18	18	18	17	18	18	18	18	18	18	19	19	19	19	19	19	18	18	18	18	18	18
12	18	17	19	18	18	19	20	19	17	17	17	19	19	19	19	19	19	19	19	18	18	18	18	18	18
13	18	18	18	18	18	18	18	18	18	18	18	19	18	19	19	19	19	19	19	19	18	17	18	18	18
14	17	18	17	17	18	18	18	18	17	18	M	M	11	9	M	M	M	13	10	6	6	5	5	5	13
15	5	5	5	6	6	6	5	5	5	5	5	5	6	6	7	7	7	7	6	6	6	6	6	6	6
16	6	7	6	7	6	6	6	6	5	5	6	6	7	7	7	8	9	8	7	9	7	6	5	5	7
17	5	5	5	5	5	5	5	5	4	4	5	5	6	6	6	7	6	7	7	6	5	5	5	5	5
18	4	5	5	5	5	5	5	5	5	5	6	6	6	7	7	7	7	6	6	5	5	5	4	4	5
19	4	4	5	4	5	4	4	4	4	4	4	4	5	6	6	6	6	6	6	5	5	5	5	5	5
20	4	5	5	5	6	6	6	6	6	6	6	8	9	7	7	7	6	6	6	6	5	5	5	5	6
21	4	5	5	5	5	5	5	5	4	4	5	5	4	5	6	6	6	6	6	6	5	5	5	4	5
22	4	4	5	4	5	5	5	4	4	5	5	5	5	6	6	6	7	6	5	5	5	5	5	5	5
23	5	5	5	5	5	5	4	4	4	4	4	4	5	5	6	5	6	6	5	5	5	4	4	4	5
24	4	4	4	4	4	4	3	4	3	3	3	4	4	5	5	6	6	6	5	5	4	4	4	4	4
25	3	4	4	4	4	4	5	5	5	5	5	6	6	6	5	6	6	6	7	6	6	8	7	6	5
26	6	6	6	7	6	6	6	6	6	7	7	7	8	8	8	7	8	8	8	6	7	8	7	7	7
27	7	7	7	7	7	7	7	7	7	7	7	8	8	9	9	9	8	8	8	8	8	8	8	7	8
28	8	8	8	8	8	8	8	7	7	8	8	9	8	8	8	8	9	9	5	7	8	8	8	8	8

MONTHLY STATISTICS:

GEOM	ARITH-----PERCENTILES-----							-----RANGE-----					STN GEOM	PERCENT	NO. OF TIMES	
MEAN	MEDIAN	MEAN	50	90	95	98	99	1-HR		24-HR			DEVIATION	VALID DATA	ABOVE LIM	LEVEL
10	9	12	9	18	19	19	20	3	-	20	4	-	19	2	99	0

NOTES: 1. FLAGS FOR INVALID DATA :
D: DYNAMIC CALIBRATION
T: TELEMETRY/DATALOGGR FAULT
M: MAINTENANCE OR ANALYZER FAULT
P: POWER FAILURE

THE HONGKONG ELECTRIC COMPANY, LTD.
AIR QUALITY DATA MONTHLY TIME SERIES REPORT
MONTH: FEBRUARY

STATION : VICTORIA PEAK
POLLUTANT : NITROGEN DIOXIDE

YEAR : 2025
UNIT : MICROGRAMS/CUBIC METER

DAY	1	2	3	4	5	6	7	8	9	10	11	12	13	14	15	16	17	18	19	20	21	22	23	24	MEAN
1	0	0	0	0	0	0	0	0	0	0	0	0	0	0	0	0	0	0	0	0	0	0	0	0	0
2	0	0	0	0	0	0	0	0	0	0	0	0	0	0	0	0	0	0	0	0	0	0	0	0	0
3	0	0	0	0	0	0	0	0	0	0	0	0	0	0	0	0	0	0	0	0	0	0	0	0	0
4	0	0	0	0	0	0	0	0	0	0	0	0	0	0	0	0	0	0	0	0	0	0	0	0	0
5	0	0	0	0	0	0	0	0	0	0	0	0	0	0	0	0	0	0	0	0	0	0	0	0	0
6	0	0	0	0	0	0	0	0	0	0	0	0	0	0	0	0	0	0	0	0	0	0	0	0	0
7	0	0	0	0	0	0	0	0	0	0	0	0	0	0	0	0	0	0	0	0	0	0	0	0	0
8	0	0	0	0	0	0	0	0	0	0	0	0	0	0	0	0	0	0	0	0	0	0	0	0	0
9	0	0	0	0	0	0	0	0	0	0	0	0	0	0	0	0	0	0	0	0	0	0	0	0	0
10	0	0	0	0	0	0	0	0	0	0	0	0	0	0	0	0	0	0	0	0	0	0	0	0	0
11	0	0	0	0	0	0	0	0	0	0	0	0	0	0	0	0	0	0	0	0	0	0	0	0	0
12	0	0	0	0	0	0	0	0	0	0	0	0	0	0	0	0	0	0	0	0	0	0	0	0	0
13	0	0	0	0	0	0	0	0	0	0	0	0	0	0	0	0	0	0	0	0	0	0	0	0	0
14	0	0	0	0	0	0	0	0	0	0	M	M	16	18	M	M	M	14	13	11	10	9	11	7	6
15	8	5	5	5	4	3	3	5	7	9	10	17	11	9	24	21	30	46	56	60	47	54	16	8	19
16	9	8	9	12	12	9	9	7	8	8	7	34	31	33	35	38	45	43	60	70	47	31	17	9	25
17	9	6	6	6	6	5	6	6	12	11	7	6	6	5	6	9	11	10	7	5	5	4	4	5	7
18	3	3	3	3	2	3	3	4	7	9	10	7	7	6	5	7	7	4	3	4	3	2	2	2	5
19	2	1	1	1	1	1	3	3	3	4	7	5	5	7	10	6	10	3	2	5	4	4	3	2	4
20	2	1	1	1	1	1	2	3	5	8	5	4	3	2	5	11	13	7	7	5	2	3	2	1	4
21	0	1	1	1	0	0	1	3	6	8	8	7	6	10	11	12	17	23	12	6	4	3	3	2	6
22	2	2	1	1	1	1	2	3	5	7	6	6	4	5	8	10	12	8	6	7	8	7	6	6	5
23	4	3	3	2	3	2	3	5	5	6	7	6	6	6	6	6	9	10	9	7	8	7	6	5	6
24	5	4	3	4	3	3	4	7	8	10	8	5	3	3	3	5	4	3	4	4	3	3	2	2	4
25	1	1	1	1	1	1	2	4	5	10	10	11	13	12	14	15	19	19	28	30	23	34	30	10	12
26	6	4	10	21	9	7	7	2	9	19	18	15	13	16	20	7	6	4	5	6	4	5	5	5	9
27	3	3	3	2	2	2	2	3	7	8	8	11	12	12	16	20	23	42	41	30	15	7	9	4	12
28	2	3	2	2	1	2	2	2	3	18	14	24	6	4	8	4	9	6	5	2	5	9	3	9	6

MONTHLY STATISTICS:

GEOM	ARITH-----PERCENTILES-----							-----RANGE-----				STN GEOM	PERCENT	NO. OF TIMES		
MEAN	MEDIAN	MEAN	50	90	95	98	99	1-HR	24-HR	DEVIATION	VALID DATA	ABOVE LIM	LEVEL			
6	1	5	1	11	19	35	46	0	-	70	0	-	25	3	99	0

NOTES: 1. FLAGS FOR INVALID DATA :
D: DYNAMIC CALIBRATION
T: TELEMETRY/DATALOGGR FAULT
M: MAINTENANCE OR ANALYZER FAULT
P: POWER FAILURE

THE HONGKONG ELECTRIC COMPANY, LTD.
AIR QUALITY DATA MONTHLY TIME SERIES REPORT

STATION : CHUNG HOM KOK ZONE SUBSTATION
POLLUTANT : SULPHUR DIOXIDE

MONTH: FEBRUARY

YEAR : 2025
UNIT : MICROGRAMS/CUBIC METER

DAY	1	2	3	4	5	6	7	8	9	10	11	12	13	14	15	16	17	18	19	20	21	22	23	24	MEAN	
1	0	0	0	0	0	0	0	0	0	0	0	0	0	0	0	0	0	0	0	0	0	0	0	2	0	
2	1	0	0	0	0	0	0	0	0	0	0	0	0	0	0	0	0	0	0	0	0	0	0	1	0	
3	0	0	0	0	0	0	0	0	0	0	0	0	0	0	0	0	0	0	0	0	0	0	0	0	0	
4	0	0	0	0	0	0	0	0	0	0	0	0	0	0	0	0	0	0	0	0	0	0	0	0	0	
5	0	0	0	0	0	0	0	0	0	0	1	1	1	1	0	1	1	1	0	0	1	0	0	1	0	
6	0	1	1	1	1	1	1	1	1	0	0	1	1	1	1	1	1	1	1	1	1	1	1	1	2	1
7	1	0	0	0	1	1	1	1	1	1	0	0	0	0	0	0	0	0	0	0	0	0	0	0	1	0
8	0	0	0	0	0	0	0	0	0	0	0	0	0	0	0	0	0	1	1	0	0	0	0	0	0	0
9	0	0	0	0	0	0	0	0	0	0	0	0	1	1	1	0	1	1	0	0	0	0	0	0	1	0
10	0	0	0	0	0	0	0	0	0	1	0	1	1	1	1	1	1	0	0	0	0	0	0	0	0	0
11	0	0	0	0	0	0	0	0	0	0	1	1	1	0	1	1	1	1	1	1	0	0	0	0	2	0
12	0	0	0	0	0	0	0	0	0	1	2	4	2	2	2	2	1	1	1	0	0	1	0	0	2	1
13	1	1	1	0	0	1	1	1	1	1	1	1	1	1	1	1	0	0	0	0	0	0	0	0	2	1
14	0	0	0	0	0	0	0	0	0	0	0	0	0	M	M	M	M	M	M	M	M	M	M	M	M	
15	M	M	M	M	M	M	M	M	M	M	M	M	M	M	M	M	M	M	M	M	M	M	M	M	M	
16	M	M	M	M	M	M	M	M	M	M	M	M	M	M	M	M	M	M	M	M	M	M	M	M	M	
17	M	M	M	M	M	M	M	M	M	M	M	M	M	M	M	M	M	M	M	M	M	M	M	M	M	
18	M	M	M	M	M	M	M	M	M	M	M	M	M	M	M	M	M	1	1	1	0	0	0	0	1	
19	0	0	0	0	0	0	0	0	0	0	0	0	0	0	0	0	0	0	0	0	0	0	0	0	2	0
20	0	0	0	4	4	3	2	2	2	1	3	6	3	1	1	0	0	0	0	0	0	0	0	0	1	1
21	0	0	0	0	0	0	0	0	0	0	0	0	0	0	0	0	0	0	0	0	0	0	0	0	2	0
22	0	0	0	0	0	0	0	0	0	0	0	1	1	1	1	1	1	1	1	0	0	0	0	1	1	0
23	1	0	0	0	0	0	0	0	0	0	0	0	0	1	2	2	1	0	0	0	0	0	0	0	1	0
24	0	0	0	0	0	0	0	0	0	0	0	0	0	0	0	0	0	0	0	0	0	0	0	0	0	0
25	0	0	0	0	0	0	0	0	0	0	1	1	1	2	2	2	3	1	2	4	3	3	2	3	1	
26	2	1	1	2	1	1	1	1	1	3	2	1	1	1	1	1	2	1	1	1	1	1	1	1	2	1
27	1	1	1	0	0	0	1	0	1	1	1	1	1	1	1	1	0	0	0	0	0	0	0	2	1	
28	0	0	0	0	0	0	0	0	1	1	2	0	0	1	0	0	0	1	1	1	1	1	1	1	2	1

MONTHLY STATISTICS:

GEOM	ARITH-----PERCENTILES-----							-----RANGE-----				STN GEOM	PERCENT	NO. OF TIMES		
MEAN	MEDIAN	MEAN	50	90	95	98	99	1-HR		24-HR		DEVIATION	VALID DATA	ABOVE LIMIT LEVEL		
1	0	0	0	1	2	3	3	0	-	6	0	-	1	1	85	0

NOTES: 1. FLAGS FOR INVALID DATA :
D: DYNAMIC CALIBRATION
T: TELEMETRY/DATALOGGR FAULT
M: MAINTENANCE OR ANALYZER FAULT
P: POWER FAILURE

THE HONGKONG ELECTRIC COMPANY, LTD.
AIR QUALITY DATA MONTHLY TIME SERIES REPORT

STATION : CHUNG HOM KOK ZONE SUBSTATION
POLLUTANT : NITROGEN DIOXIDE

MONTH: FEBRUARY

YEAR : 2025
UNIT : MICROGRAMS/CUBIC METER

DAY	1	2	3	4	5	6	7	8	9	10	11	12	13	14	15	16	17	18	19	20	21	22	23	24	MEAN
1	4	3	4	4	4	4	4	4	6	6	7	6	6	9	10	7	5	4	4	5	11	10	6	4	6
2	4	4	4	6	6	5	8	9	9	9	8	16	9	7	5	4	5	7	8	8	7	6	8	7	7
3	5	6	6	6	5	5	8	14	22	16	23	25	18	20	24	18	18	21	16	11	9	8	7	7	13
4	9	6	4	4	5	5	7	7	9	7	6	6	6	6	7	6	8	7	5	5	8	10	11	11	7
5	8	9	12	6	8	9	8	8	9	8	9	8	11	9	9	13	13	12	12	18	27	13	13	13	11
6	9	10	9	9	11	9	9	10	12	11	8	8	7	9	11	11	11	24	25	21	12	12	10	11	12
7	12	12	10	10	13	17	21	35	34	42	41	38	38	33	37	31	22	20	20	20	14	10	9	8	23
8	8	8	8	8	8	7	9	11	14	17	12	8	7	8	11	12	14	26	19	18	13	10	10	10	12
9	11	9	9	7	7	7	6	8	7	5	16	9	10	9	8	7	7	11	11	9	8	8	7	9	9
10	6	6	7	8	6	6	8	10	12	12	11	10	8	7	9	12	11	10	10	8	8	9	11	14	9
11	10	10	9	9	8	8	10	12	13	12	9	9	8	7	9	13	15	12	11	13	9	8	9	7	10
12	6	M	6	5	4	3	4	12	41	54	76	102	92	84	93	91	88	47	19	13	8	8	10	7	38
13	5	6	8	7	9	10	11	12	19	20	18	16	14	12	14	12	11	10	13	13	14	13	13	12	12
14	13	11	10	8	9	8	9	14	16	17	14	15	13	M	M	M	M	M	M	M	M	M	M	M	
15	M	M	M	M	M	M	M	M	M	M	M	M	M	M	M	M	M	M	M	M	M	M	M	M	
16	M	M	M	M	M	M	M	M	M	M	M	M	M	M	M	M	M	M	M	M	M	M	M	M	
17	M	M	M	M	M	M	M	M	M	M	M	M	M	M	M	M	M	M	M	M	M	M	M	M	
18	M	M	M	M	M	M	M	M	M	M	M	M	M	M	M	M	M	15	13	15	10	11	9	11	
19	11	8	9	8	7	9	8	11	10	11	8	8	10	12	11	17	13	10	11	10	10	9	9	8	10
20	8	9	8	11	9	8	9	12	13	12	14	10	10	10	11	11	9	9	8	8	7	6	5	5	9
21	4	5	6	6	7	6	7	8	9	10	13	12	12	14	14	17	16	15	14	12	11	8	8	10	10
22	8	7	9	7	8	9	9	10	12	11	11	13	12	13	14	18	20	18	16	14	12	12	14	15	12
23	13	17	29	13	13	14	14	15	14	14	16	20	18	25	39	40	19	17	23	14	13	10	12	10	18
24	8	7	7	10	11	7	8	12	18	20	12	11	9	9	8	9	11	12	8	9	8	9	8	9	10
25	9	9	9	9	10	9	12	12	13	18	18	18	26	59	58	59	80	49	75	129	149	143	145	112	51
26	100	M	68	104	83	71	58	54	25	84	45	28	19	18	17	19	19	17	16	14	14	12	12	13	40
27	12	14	11	7	7	7	9	10	11	12	13	11	10	10	11	12	11	13	8	8	7	7	7	9	10
28	7	7	5	8	7	6	10	20	32	23	41	8	7	10	7	10	13	14	15	22	26	21	6	9	14

MONTHLY STATISTICS:

GEOM	ARITH-----PERCENTILES-----							RANGE-----				STN GEOM	PERCENT	NO. OF TIMES		
MEAN	MEDIAN	MEAN	50	90	95	98	99	1-HR	24-HR	DEVIATION	VALID DATA	ABOVE LIMIT LEVEL				
11	10	15	10	23	44	86	103	3	-	149	6	-	51	2	85	0

- NOTES: 1. FLAGS FOR INVALID DATA :
- D: DYNAMIC CALIBRATION
 - T: TELEMETRY/DATALOGGR FAULT
 - M: MAINTENANCE OR ANALYZER FAULT
 - P: POWER FAILURE

THE HONGKONG ELECTRIC COMPANY, LTD.
AIR QUALITY DATA MONTHLY TIME SERIES REPORT
MONTH: FEBRUARY

STATION : VICTORIA ROAD SUBSTATION
POLLUTANT : SULPHUR DIOXIDE

YEAR : 2025
UNIT : MICROGRAMS/CUBIC METER

DAY	1	2	3	4	5	6	7	8	9	10	11	12	13	14	15	16	17	18	19	20	21	22	23	24	MEAN
1	1	1	1	1	1	1	1	1	1	1	2	2	2	2	2	2	2	2	1	2	1	1	2	1	1
2	1	1	1	1	1	1	1	1	1	1	2	1	2	2	2	2	2	1	1	1	1	1	1	1	1
3	1	1	1	1	1	1	1	1	1	1	1	1	2	1	1	1	1	1	1	1	1	1	1	1	1
4	1	1	1	1	1	1	1	1	1	1	1	1	1	1	1	1	1	1	1	1	1	1	1	1	1
5	0	1	1	1	1	1	1	1	1	1	1	1	1	1	1	1	1	1	1	1	1	0	1	1	1
6	1	1	1	1	1	1	1	1	1	1	1	1	1	1	1	1	1	1	2	1	1	1	1	1	1
7	1	1	1	1	1	1	1	1	1	1	1	1	1	1	1	1	1	1	1	1	1	1	1	1	1
8	1	1	1	1	1	1	1	1	1	1	1	1	1	1	1	1	1	1	1	1	1	1	1	1	1
9	1	1	1	1	1	1	1	1	1	1	1	2	1	1	1	1	1	1	1	1	1	1	1	1	1
10	0	1	1	0	0	1	1	1	1	1	0	1	1	1	1	1	1	1	1	1	1	1	1	1	1
11	1	1	1	1	1	1	1	1	1	1	1	1	1	1	0	1	1	1	1	1	1	1	1	1	1
12	1	1	1	1	1	1	1	1	1	1	2	2	2	2	2	3	4	1	3	3	2	3	2	2	2
13	2	1	2	1	1	1	1	1	1	1	1	1	1	1	1	1	2	1	1	1	1	1	1	1	1
14	1	1	1	1	1	1	1	1	1	1	1	1	1	1	1	1	1	1	1	1	1	1	1	1	1
15	1	1	1	1	1	1	1	1	1	1	1	1	2	2	1	1	2	2	1	1	2	1	1	1	1
16	1	2	1	1	1	1	2	1	1	2	2	3	2	3	2	2	2	2	2	2	2	2	1	2	2
17	1	1	1	1	1	1	1	1	1	1	1	1	1	1	1	1	1	1	1	1	1	1	1	1	1
18	1	1	1	1	1	1	1	1	1	1	1	1	1	1	1	1	1	1	1	1	1	1	1	1	1
19	1	1	1	1	1	1	1	1	1	1	1	1	1	1	1	1	1	1	1	1	1	1	1	1	1
20	1	1	1	1	1	1	1	1	2	1	1	2	2	1	1	1	1	1	1	1	1	1	1	1	1
21	1	1	1	1	1	1	1	1	1	1	1	1	1	1	1	1	1	1	1	1	1	1	1	1	1
22	1	1	1	1	1	1	1	1	1	1	1	1	1	1	1	1	1	1	1	1	1	1	1	1	1
23	1	1	1	1	1	1	1	1	1	1	1	2	1	1	1	1	1	1	1	1	1	1	1	1	1
24	1	1	1	1	1	1	1	0	1	1	1	1	1	1	1	1	1	1	1	1	1	1	1	1	1
25	1	1	1	1	1	1	1	1	1	1	1	1	1	1	1	1	1	2	2	2	2	2	2	2	1
26	2	2	2	2	1	2	2	1	2	2	2	3	2	2	2	2	1	1	1	1	1	1	1	1	2
27	1	1	1	1	1	1	1	1	1	1	2	2	1	2	2	1	1	1	1	1	1	1	1	1	1
28	1	2	1	1	1	1	1	1	2	2	3	4	2	1	2	2	2	2	2	2	2	2	2	2	2

MONTHLY STATISTICS:

GEOM	ARITH-----PERCENTILES-----							-----RANGE-----				STN GEOM	PERCENT	NO. OF TIMES			
MEAN	MEDIAN	MEAN	50	90	95	98	99	1-HR		24-HR		DEVIATION	VALID DATA	ABOVE LIMIT LEVEL			
1	1	1	1	1	2	2	2	3	0	-	4	1	-	2	1	100	0

- NOTES: 1. FLAGS FOR INVALID DATA :
- D: DYNAMIC CALIBRATION
 - T: TELEMETRY/DATALOGGR FAULT
 - M: MAINTENANCE OR ANALYZER FAULT
 - P: POWER FAILURE

THE HONGKONG ELECTRIC COMPANY, LTD.
AIR QUALITY DATA MONTHLY TIME SERIES REPORT
MONTH: FEBRUARY

STATION : VICTORIA ROAD SUBSTATION
POLLUTANT : NITROGEN DIOXIDE

YEAR : 2025
UNIT : MICROGRAMS/CUBIC METER

DAY	1	2	3	4	5	6	7	8	9	10	11	12	13	14	15	16	17	18	19	20	21	22	23	24	MEAN
1	18	20	14	17	11	9	8	8	11	14	15	14	16	20	24	24	22	18	24	26	27	21	19	16	17
2	18	18	12	4	3	3	3	4	4	4	5	7	8	12	19	17	19	9	14	7	7	5	5	5	9
3	4	3	3	3	3	2	4	6	8	8	7	7	7	8	7	8	6	5	5	5	5	4	5	5	5
4	3	2	2	1	1	1	3	5	6	7	5	5	4	5	5	7	6	8	9	13	11	19	12	5	6
5	4	3	3	2	3	3	4	6	11	10	9	7	6	9	9	10	12	13	15	16	18	11	9	9	8
6	10	5	4	4	3	3	5	8	13	16	14	10	8	9	8	12	12	14	32	17	17	11	7	5	10
7	7	6	4	4	5	6	7	9	12	14	14	13	11	11	13	8	8	8	9	9	8	7	7	6	9
8	5	4	3	3	2	3	4	5	8	10	10	9	10	13	12	13	15	12	12	11	10	8	7	8	8
9	7	5	4	3	3	3	3	5	6	7	8	18	10	5	5	5	6	5	5	5	5	4	4	4	6
10	3	3	3	3	2	3	4	6	8	11	13	16	10	7	7	8	10	18	26	22	10	6	5	7	9
11	6	4	4	3	3	3	6	8	14	14	16	22	14	12	11	13	12	14	14	8	6	5	5	5	9
12	4	M	6	6	5	7	10	20	18	21	22	19	20	20	23	27	35	48	29	25	23	23	22	18	20
13	12	9	6	4	4	7	16	13	13	15	16	14	10	10	11	24	20	15	11	9	7	7	6	6	11
14	5	5	4	3	3	3	6	8	9	10	11	10	11	10	13	13	13	12	11	10	16	13	12	17	10
15	14	11	11	6	6	5	6	12	12	20	20	22	21	21	15	10	20	13	15	18	21	18	17	16	15
16	16	16	9	7	8	10	11	10	11	21	24	30	30	38	37	32	29	27	44	52	41	37	17	16	24
17	20	7	5	5	5	5	6	10	13	14	12	11	10	14	14	14	15	13	11	8	8	8	7	7	10
18	7	7	6	5	5	5	7	10	11	12	17	14	13	12	14	17	17	16	11	9	8	7	6	5	10
19	6	4	4	4	3	3	4	6	9	8	9	10	10	12	11	20	21	13	8	7	7	7	7	5	8
20	5	4	4	4	4	4	9	16	27	19	16	15	11	13	14	13	18	13	9	7	5	6	6	4	10
21	3	3	3	3	3	3	4	6	9	12	10	11	9	10	13	14	14	16	15	11	8	6	5	7	8
22	5	4	4	3	3	4	4	5	8	10	9	10	10	7	8	9	8	10	9	7	8	8	7	8	7
23	6	5	4	4	4	4	5	5	7	8	8	7	9	11	10	10	10	9	9	8	8	7	6	6	7
24	5	5	4	5	4	4	5	9	11	11	12	12	9	11	12	14	15	11	9	7	6	6	6	8	8
25	5	4	4	4	4	4	5	8	11	11	13	14	21	24	26	28	36	44	46	40	37	34	31	33	20
26	34	M	27	23	21	20	17	21	23	22	30	39	40	33	25	21	21	20	15	12	10	10	9	8	22
27	7	5	5	4	5	8	10	11	13	16	16	20	15	10	9	12	13	19	19	17	17	16	11	10	12
28	7	5	4	3	7	5	13	19	24	24	31	49	22	10	13	16	25	21	18	21	15	9	6	13	16

MONTHLY STATISTICS:

GEOM	ARITH-----PERCENTILES-----										RANGE-----		STN GEOM	PERCENT	NO. OF TIMES	
MEAN	MEDIAN	MEAN	50	90	95	98	99	1-HR	24-HR	DEVIATION	VALID DATA	ABOVE	LIMIT	LEVEL		
9	9	11	9	21	27	37	40	1	-	52	5	-	24	2	100	0

- NOTES: 1. FLAGS FOR INVALID DATA :
- D: DYNAMIC CALIBRATION
 - T: TELEMETRY/DATALOGGR FAULT
 - M: MAINTENANCE OR ANALYZER FAULT
 - P: POWER FAILURE

THE HONGKONG ELECTRIC COMPANY, LTD.
AIR QUALITY DATA MONTHLY TIME SERIES REPORT
MONTH: FEBRUARY

STATION : AP LEI CHAU
POLLUTANT : SULPHUR DIOXIDE

YEAR : 2025
UNIT : MICROGRAMS/CUBIC METER

DAY	1	2	3	4	5	6	7	8	9	10	11	12	13	14	15	16	17	18	19	20	21	22	23	24	MEAN	
1	8	8	8	8	8	8	8	8	9	10	10	10	10	12	12	9	11	9	8	8	8	8	8	8	9	
2	8	8	8	8	8	8	7	8	7	8	8	8	8	8	8	7	7	7	7	7	7	7	7	8	8	
3	8	7	7	7	7	7	7	7	7	8	7	8	8	8	8	8	7	7	7	7	7	7	7	8	7	
4	7	7	7	7	7	7	7	7	7	7	7	7	7	7	7	7	7	7	7	7	7	7	7	8	7	
5	8	7	7	7	7	7	7	7	7	8	8	8	8	8	7	8	8	8	8	8	7	8	7	8	8	
6	8	8	8	8	8	8	8	8	8	8	8	7	7	8	8	7	7	8	7	8	8	8	8	8	8	
7	8	8	8	8	7	8	8	8	7	9	8	8	8	8	8	8	7	7	7	7	7	7	7	8	8	
8	7	7	7	7	7	7	7	7	8	8	8	8	8	9	9	8	8	8	8	8	8	8	8	8	8	
9	8	8	8	8	8	7	7	7	8	7	8	8	8	8	8	8	8	8	8	7	7	7	7	8	8	
10	7	7	7	7	7	7	7	8	8	8	8	8	8	8	8	8	8	8	9	8	8	7	7	7	8	
11	7	7	7	7	7	7	7	7	7	8	8	8	8	7	8	7	7	7	7	7	7	7	7	8	7	
12	7	7	7	8	7	8	8	8	9	11	11	10	10	10	12	14	14	11	9	10	11	9	9	9	10	
13	9	8	8	8	8	8	8	8	8	8	8	8	8	8	8	8	8	8	8	7	7	7	7	8	8	
14	8	8	7	7	7	7	7	7	7	7	7	7	8	7	8	8	8	8	7	7	8	7	7	8	7	
15	7	7	7	8	8	7	7	8	8	8	8	10	9	8	8	8	8	8	8	8	8	8	8	8	8	
16	10	9	9	8	8	8	8	8	8	10	10	10	12	11	13	12	12	11	11	11	11	9	8	10		
17	8	8	7	7	8	8	8	8	8	8	8	8	9	9	8	9	8	8	8	8	8	8	8	9	8	
18	8	8	8	8	8	8	8	8	8	9	9	9	9	9	8	8	8	8	8	7	7	7	7	8	8	
19	7	7	7	7	7	7	7	7	7	7	7	7	7	8	8	9	8	8	8	7	7	7	7	7	7	
20	7	7	8	8	9	8	8	8	8	8	8	11	10	8	7	7	7	7	7	7	7	7	7	7	8	
21	7	7	7	7	7	7	7	7	7	7	7	8	7	7	7	7	7	8	8	7	7	7	7	8	7	
22	7	7	7	7	7	7	7	7	7	7	7	7	7	8	7	7	7	7	7	7	7	7	7	8	7	
23	7	7	7	7	7	7	7	7	7	7	9	7	7	8	8	7	7	8	7	7	7	7	7	7	7	
24	7	7	7	7	7	7	7	7	7	7	7	7	7	7	8	8	8	7	7	7	7	7	10	7	7	
25	7	7	7	7	7	7	7	7	7	7	7	7	9	8	8	8	9	9	11	10	9	9	9	10	8	
26	9	8	9	10	9	8	8	8	9	10	11	12	9	11	9	9	9	9	8	8	8	9	9	9	8	9
27	8	8	8	7	7	7	7	8	8	8	10	12	9	8	8	M	7	7	8	8	7	8	7	8	8	
28	8	8	8	8	8	8	8	10	10	14	13	13	8	8	8	8	8	8	8	8	8	9	8	8	9	

MONTHLY STATISTICS:

GEOM	ARITH-----PERCENTILES-----							RANGE-----				STN GEOM	PERCENT	NO. OF TIMES		
MEAN	MEDIAN	MEAN	50	90	95	98	99	1-HR		24-HR	DEVIATION	VALID DATA	ABOVE	LIMIT LEVEL		
8	8	8	8	9	10	12	12	7	-	14	7	-	10	1	100	0

- NOTES: 1. FLAGS FOR INVALID DATA :
- D: DYNAMIC CALIBRATION
 - T: TELEMETRY/DATALOGGR FAULT
 - M: MAINTENANCE OR ANALYZER FAULT
 - P: POWER FAILURE

THE HONGKONG ELECTRIC COMPANY, LTD.
AIR QUALITY DATA MONTHLY TIME SERIES REPORT
MONTH: FEBRUARY

STATION : AP LEI CHAU
POLLUTANT : NITROGEN DIOXIDE

YEAR : 2025
UNIT : MICROGRAMS/CUBIC METER

DAY	1	2	3	4	5	6	7	8	9	10	11	12	13	14	15	16	17	18	19	20	21	22	23	24	MEAN
1	14	22	18	9	5	15	11	17	34	33	28	33	35	45	41	19	41	17	12	8	8	4	6	9	20
2	8	4	2	3	3	3	4	5	5	5	6	7	6	4	4	4	4	5	7	16	12	6	6	8	6
3	5	16	5	4	4	7	11	22	22	20	22	20	18	18	14	18	14	12	14	15	13	11	14	13	14
4	9	7	5	5	5	7	10	14	16	15	9	6	6	6	5	M	4	4	5	18	34	27	15	17	11
5	7	6	7	4	4	6	9	13	9	7	8	6	7	7	9	14	15	18	15	19	12	12	9	13	10
6	7	6	4	5	6	6	7	9	13	13	8	6	6	8	11	9	10	21	28	17	14	18	16	7	11
7	8	9	7	8	11	17	18	31	28	39	38	34	27	28	33	24	25	26	25	18	15	12	12	11	21
8	11	8	7	7	6	7	9	15	20	22	16	15	18	26	23	18	22	26	26	24	19	22	17	11	16
9	13	12	8	7	6	6	9	14	11	10	14	11	6	3	3	3	3	4	6	12	8	5	4	7	8
10	5	4	4	4	3	4	7	10	10	15	17	22	6	3	4	6	9	12	68	25	6	6	7	11	11
11	7	9	4	4	4	5	6	10	12	13	11	8	5	7	7	10	13	10	9	8	8	7	6	7	8
12	6	4	4	3	3	28	33	30	49	64	66	57	52	56	63	69	66	64	51	52	53	32	34	12	40
13	7	5	4	4	6	9	11	21	33	35	23	11	9	9	11	11	11	15	12	11	9	8	8	9	12
14	8	9	6	6	6	7	12	16	16	15	16	13	10	15	8	6	6	8	8	6	7	6	5	10	9
15	12	9	8	7	7	8	11	7	9	9	12	55	40	13	6	11	10	9	12	17	13	18	19	25	14
16	49	39	33	23	43	40	34	26	24	36	26	27	38	37	58	49	52	65	70	51	58	30	11	11	39
17	8	6	5	5	6	6	7	8	9	11	7	8	6	6	6	7	6	8	9	10	9	8	10	10	8
18	8	M	8	7	7	10	11	17	17	19	14	10	10	8	7	8	7	8	7	8	7	6	6	7	9
19	7	5	5	5	5	7	8	7	7	8	10	9	12	13	20	38	26	9	5	6	7	7	7	6	10
20	7	5	5	6	5	6	11	14	14	9	12	8	6	5	6	7	10	12	10	10	7	8	7	6	8
21	3	3	3	4	4	5	5	6	8	10	11	11	11	12	11	10	12	16	11	10	9	11	14	7	9
22	6	12	6	5	5	6	6	7	10	12	12	12	11	10	13	12	16	14	18	20	15	11	15	15	11
23	13	10	10	9	11	11	12	14	14	19	24	19	18	22	19	18	18	19	23	21	21	20	19	18	17
24	17	14	11	13	11	11	16	23	25	25	23	11	7	7	5	4	6	8	8	7	6	9	8	8	12
25	6	6	5	5	6	6	8	12	13	21	24	28	55	45	45	51	72	66	93	101	88	95	88	92	43
26	81	69	73	70	62	55	48	33	48	59	58	56	25	45	13	8	8	10	12	13	9	12	12	9	37
27	7	6	6	6	5	8	12	18	23	15	29	35	12	5	5	M	5	6	16	30	9	5	12	20	13
28	14	8	5	4	8	20	21	41	31	46	51	32	3	3	4	4	4	3	5	5	8	11	4	11	14

MONTHLY STATISTICS:

GEOM	ARITH-----PERCENTILES-----							RANGE-----				STN GEOM	PERCENT	NO. OF TIMES		
MEAN	MEDIAN	MEAN	50	90	95	98	99	1-HR		24-HR		DEVIATION	VALID DATA	ABOVE LIMIT LEVEL		
11	10	16	10	34	52	67	76	2	-	101	6	-	43	2	100	0

NOTES: 1. FLAGS FOR INVALID DATA :
D: DYNAMIC CALIBRATION
T: TELEMETRY/DATALOGGR FAULT
M: MAINTENANCE OR ANALYZER FAULT
P: POWER FAILURE

THE HONGKONG ELECTRIC COMPANY, LTD.
AIR QUALITY DATA MONTHLY TIME SERIES REPORT
MONTH: FEBRUARY

STATION : CHEUNG CHAU
POLLUTANT : SULPHUR DIOXIDE

YEAR : 2025
UNIT : MICROGRAMS/CUBIC METER

DAY	1	2	3	4	5	6	7	8	9	10	11	12	13	14	15	16	17	18	19	20	21	22	23	24	MEAN
1	1	1	1	1	1	1	1	1	1	2	2	3	1	2	2	2	2	2	2	2	2	2	1	3	2
2	2	2	2	2	1	1	1	1	1	1	1	1	2	2	1	1	1	1	1	1	1	1	1	2	1
3	1	1	1	1	1	1	1	1	1	0	1	1	1	1	1	1	1	1	0	0	0	0	0	1	1
4	0	0	0	0	0	0	0	0	0	1	1	0	1	1	1	1	1	1	1	1	0	1	0	1	1
5	0	1	1	1	1	1	1	1	1	1	1	1	1	2	1	1	1	1	1	1	1	1	1	1	1
6	1	1	1	1	1	1	1	1	1	1	1	1	1	2	1	1	1	1	1	1	1	2	1	2	1
7	1	2	1	1	1	1	1	1	1	0	1	1	1	1	1	1	1	1	1	0	0	0	0	1	1
8	0	0	0	1	1	1	1	1	1	1	1	0	1	1	1	1	1	1	1	1	1	1	0	1	1
9	1	0	2	1	0	0	0	0	1	1	1	0	0	1	1	1	1	1	1	1	0	0	0	1	1
10	0	0	0	0	0	0	0	0	1	1	1	1	0	1	1	1	0	0	0	0	0	0	0	M	0
11	M	M	M	M	M	M	M	M	M	M	M	M	M	M	M	M	M	M	M	M	M	M	M	M	M
12	M	M	M	M	M	M	M	M	M	M	M	M	M	M	M	M	M	M	M	M	M	M	M	M	M
13	M	M	M	M	M	M	M	M	M	M	M	M	M	M	M	M	M	M	M	M	M	M	M	M	M
14	M	M	M	M	M	M	M	M	M	M	M	M	M	M	M	M	M	M	M	M	M	M	M	M	M
15	M	M	M	M	M	M	M	M	M	M	M	M	M	M	M	M	M	M	M	M	M	M	M	M	M
16	M	M	M	M	M	M	M	M	M	M	M	M	M	M	M	M	M	M	M	M	M	M	M	M	M
17	M	M	M	M	M	M	M	M	M	M	M	M	M	M	M	4	3	3	2	2	2	2	2	2	2
18	2	2	2	2	1	1	1	2	2	2	2	2	2	2	2	2	2	2	2	2	1	1	1	2	2
19	1	1	1	1	1	1	1	1	1	1	1	1	1	1	2	2	2	2	2	1	1	1	1	2	1
20	2	1	1	1	3	3	2	2	2	2	2	4	3	3	3	3	2	2	1	1	1	1	1	1	2
21	1	1	1	1	1	1	1	1	1	1	1	1	1	2	1	1	2	1	2	1	1	1	1	1	1
22	1	1	1	1	1	1	1	1	1	1	1	1	1	2	2	2	2	2	1	1	1	1	1	1	2
23	1	1	1	1	1	1	1	1	2	1	1	1	1	1	2	2	2	2	1	1	1	1	1	1	1
24	1	1	1	0	1	1	1	1	1	1	2	1	1	1	1	1	1	1	2	1	1	1	1	1	1
25	1	1	1	1	1	1	1	1	1	1	1	2	2	2	2	2	2	2	2	2	2	2	3	3	2
26	3	2	2	2	2	2	2	2	2	2	3	3	3	3	2	2	2	2	2	2	1	1	2	2	2
27	2	1	1	1	1	1	1	1	1	2	3	3	3	3	2	2	2	2	2	2	1	1	2	2	2
28	2	2	2	2	2	2	2	2	3	5	5	4	3	3	2	2	3	3	3	3	3	3	3	3	3

MONTHLY STATISTICS:

GEOM	ARITH-----PERCENTILES-----								RANGE-----				STN GEOM	PERCENT	NO. OF TIMES	
MEAN	MEDIAN	MEAN	50	90	95	98	99	1-HR	24-HR	DEVIATION	VALID DATA	ABOVE	LIMIT	LEVEL		
1	1	1	1	2	3	3	3	0	-	5	0	-	3	1	76	0

- NOTES: 1. FLAGS FOR INVALID DATA :
- D: DYNAMIC CALIBRATION
 - T: TELEMETRY/DATALOGGR FAULT
 - M: MAINTENANCE OR ANALYZER FAULT
 - P: POWER FAILURE

THE HONGKONG ELECTRIC COMPANY, LTD.
AIR QUALITY DATA MONTHLY TIME SERIES REPORT
MONTH: FEBRUARY

STATION : CHEUNG CHAU
POLLUTANT : NITROGEN DIOXIDE

YEAR : 2025
UNIT : MICROGRAMS/CUBIC METER

DAY	1	2	3	4	5	6	7	8	9	10	11	12	13	14	15	16	17	18	19	20	21	22	23	24	MEAN
1	44	42	48	28	29	16	43	55	51	73	62	82	30	60	42	22	27	25	69	93	30	64	20	66	47
2	38	27	24	22	27	11	14	16	17	15	20	41	39	26	17	12	14	10	12	10	20	18	41	25	22
3	26	22	34	30	28	31	22	21	20	19	19	18	18	19	16	15	18	20	16	14	15	11	13	13	20
4	9	7	7	7	6	8	10	16	20	27	25	23	26	28	20	8	11	15	13	16	18	29	27	21	17
5	37	24	16	11	10	16	26	39	19	23	30	31	39	24	11	8	12	13	13	40	72	22	21	58	26
6	29	23	14	18	19	16	16	16	27	28	20	26	47	31	18	22	18	16	18	22	20	32	24	53	24
7	47	34	32	29	17	15	16	27	36	33	34	34	35	37	37	42	25	25	27	19	14	13	13	12	27
8	10	9	11	9	9	14	15	16	21	26	27	26	29	30	36	14	16	18	17	31	28	28	28	22	20
9	20	18	23	16	14	15	18	22	24	38	28	25	18	7	7	6	9	5	9	14	17	17	13	16	17
10	11	10	9	8	14	34	10	15	52	56	59	31	9	6	5	7	14	19	19	10	10	14	46	47	21
11	28	12	14	15	16	14	38	48	48	42	36	10	6	9	10	11	11	13	9	11	12	62	59	53	24
12	27	M	26	13	16	42	48	68	53	63	57	41	54	52	61	66	69	77	94	82	99	103	84	80	60
13	76	50	27	24	43	51	37	39	36	41	45	51	58	70	41	31	13	13	21	19	17	15	18	32	36
14	48	23	26	12	25	39	17	23	24	19	29	20	12	12	9	M	11	9	11	11	11	9	7	14	18
15	33	46	34	21	28	17	14	15	15	24	25	36	31	42	45	40	31	41	34	24	71	37	41	56	33
16	48	46	40	55	60	67	45	36	65	75	58	35	29	26	38	46	65	78	127	157	105	109	29	37	62
17	42	16	10	10	12	16	15	12	33	44	31	12	8	8	M	13	22	13	16	15	19	29	12	15	18
18	14	18	16	11	12	13	12	13	17	20	19	13	12	10	11	10	9	9	9	13	19	15	12	15	13
19	18	15	13	14	9	7	11	17	20	16	21	22	12	33	38	30	18	15	11	8	10	29	13	18	17
20	13	13	15	11	17	10	10	13	20	16	11	11	12	18	24	22	20	16	26	26	39	18	12	15	17
21	6	9	13	15	11	10	10	9	16	21	22	21	12	23	18	14	21	20	15	15	16	17	14	20	15
22	16	15	13	14	14	14	11	13	18	32	40	29	12	28	26	19	12	22	18	37	18	20	20	20	20
23	23	33	23	21	25	38	29	32	31	23	25	24	27	33	29	32	40	34	36	29	24	20	20	21	28
24	16	14	19	17	18	15	18	21	26	33	30	31	30	19	10	6	6	7	15	18	11	12	19	18	18
25	13	21	13	19	15	16	12	18	37	63	60	62	53	60	70	60	62	93	81	66	94	107	111	110	55
26	105	M	88	91	82	76	66	M	66	60	64	62	52	47	25	10	9	10	14	22	25	31	53	14	49
27	13	15	19	21	28	39	26	11	13	38	41	55	16	12	7	8	8	13	35	36	19	35	46	54	25
28	39	34	32	54	36	56	56	33	45	69	77	55	18	14	15	11	18	31	39	37	46	31	43	42	39

MONTHLY STATISTICS:

GEOM	ARITH-----PERCENTILES-----							-----RANGE-----					STN GEOM	PERCENT	NO. OF TIMES	
MEAN	MEDIAN	MEAN	50	90	95	98	99	1-HR	24-HR	DEVIATION	VALID DATA	ABOVE	LIMIT	LEVEL		
23	21	28	21	56	69	92	105	5	-	157	13	-	62	2	99	0

- NOTES: 1. FLAGS FOR INVALID DATA :
- D: DYNAMIC CALIBRATION
 - T: TELEMETRY/DATALOGGR FAULT
 - M: MAINTENANCE OR ANALYZER FAULT
 - P: POWER FAILURE

THE HONGKONG ELECTRIC COMPANY, LTD.
AIR QUALITY DATA MONTHLY TIME SERIES REPORT
MONTH: MARCH

STATION : VICTORIA PEAK
POLLUTANT : SULPHUR DIOXIDE

YEAR : 2025
UNIT : MICROGRAMS/CUBIC METER

DAY	1	2	3	4	5	6	7	8	9	10	11	12	13	14	15	16	17	18	19	20	21	22	23	24	MEAN
1	8	9	9	9	9	9	9	8	8	8	8	8	8	9	9	9	9	9	9	9	9	9	9	9	9
2	9	9	9	10	10	9	9	9	9	9	9	9	9	10	11	10	10	10	9	9	10	11	10	10	10
3	10	11	11	10	11	11	10	10	10	10	11	12	11	13	13	13	13	13	12	12	11	11	10	10	11
4	10	11	11	11	11	11	11	11	11	11	12	11	12	11	12	12	13	15	14	12	11	11	11	10	10
5	10	10	10	10	10	10	10	10	10	9	10	9	9	10	10	10	10	10	10	10	10	9	9	9	10
6	9	9	10	9	9	9	9	9	8	8	8	8	8	9	9	9	9	10	9	8	8	8	8	8	9
7	7	8	8	9	9	9	9	9	9	9	9	9	9	9	9	9	9	9	9	8	8	8	7	8	9
8	8	8	9	8	9	9	9	9	8	8	9	10	10	13	11	11	11	11	11	11	10	10	10	9	10
9	9	9	9	9	9	9	9	8	8	8	9	9	9	10	11	11	11	11	10	10	10	10	9	9	9
10	9	9	9	10	10	10	10	10	10	10	9	10	10	11	11	11	10	9	9	10	10	10	10	10	10
11	10	11	11	11	11	11	11	11	11	11	11	12	12	12	12	12	12	12	11	11	12	11	11	12	11
12	12	12	12	12	12	12	12	11	11	11	11	12	12	12	12	12	12	12	12	12	12	11	11	11	12
13	11	11	12	12	12	12	12	12	12	12	12	13	13	12	13	13	13	12	11	12	12	12	12	12	12
14	11	11	12	12	12	12	12	12	11	11	11	11	11	12	12	12	12	12	12	12	12	12	11	12	12
15	12	12	12	12	12	15	14	13	12	12	12	14	13	13	13	11	12	12	12	12	12	12	12	12	12
16	12	12	12	12	12	12	12	11	11	11	11	12	12	12	13	13	13	13	12	12	12	12	11	11	12
17	11	11	11	12	11	10	11	11	11	11	12	12	12	12	13	13	13	12	13	13	12	11	11	12	12
18	12	12	12	12	12	12	12	11	12	12	12	12	13	13	13	13	13	12	12	12	12	12	12	12	12
19	12	12	12	12	12	12	12	11	12	13	13	13	13	13	14	14	13	13	13	13	13	12	12	12	13
20	12	12	11	11	12	11	12	12	12	12	13	13	14	14	15	16	14	14	13	13	13	13	13	13	13
21	12	12	12	13	12	13	13	13	14	14	14	14	15	14	15	16	16	14	14	14	14	14	14	14	14
22	14	14	14	15	15	14	14	14	14	15	15	15	14	15	17	16	16	15	14	15	16	16	16	15	15
23	15	15	15	15	15	15	15	15	15	15	17	17	17	17	17	17	16	15	15	16	16	16	17	27	16
24	24	36	20	18	18	18	18	17	17	17	17	18	19	19	21	24	21	21	22	21	20	24	26	19	21
25	19	19	18	18	18	18	18	18	18	19	19	20	20	22	21	22	23	22	16	18	20	19	19	19	19
26	18	18	18	18	18	18	18	18	18	18	17	18	18	18	19	19	19	18	17	18	19	18	18	18	18
27	18	18	18	19	19	19	18	18	18	18	19	19	18	18	19	19	19	19	19	19	18	19	19	18	19
28	18	18	19	19	18	19	18	18	17	18	17	17	18	17	18	18	18	16	16	17	17	17	17	17	18
29	16	17	17	17	17	18	17	17	16	16	16	17	17	17	17	17	17	17	17	16	16	16	15	16	17
30	16	16	16	16	15	16	16	15	15	15	15	15	16	16	16	17	17	17	16	16	16	15	15	16	16
31	15	16	16	16	17	17	17	17	17	16	17	17	17	17	17	17	22	20	19	18	17	17	17	17	17

MONTHLY STATISTICS:

GEOM	ARITH-----PERCENTILES-----								-----RANGE-----				STN GEOM	PERCENT	NO. OF TIMES	
MEAN	MEDIAN	MEAN	50	90	95	98	99	1-HR	24-HR	DEVIATION	VALID DATA	ABOVE	LIMIT	LEVEL		
13	12	13	12	18	19	21	22	7	-	36	9	-	21	1	100	0

NOTES: 1. FLAGS FOR INVALID DATA :
D: DYNAMIC CALIBRATION
T: TELEMETRY/DATALOGGR FAULT
M: MAINTENANCE OR ANALYZER FAULT
P: POWER FAILURE

THE HONGKONG ELECTRIC COMPANY, LTD.
AIR QUALITY DATA MONTHLY TIME SERIES REPORT
MONTH: MARCH

STATION : VICTORIA PEAK
POLLUTANT : NITROGEN DIOXIDE

YEAR : 2025
UNIT : MICROGRAMS/CUBIC METER

DAY	1	2	3	4	5	6	7	8	9	10	11	12	13	14	15	16	17	18	19	20	21	22	23	24	MEAN
1	5	4	2	2	2	2	4	2	6	19	10	8	6	6	5	7	6	2	2	3	3	3	2	2	5
2	2	3	3	3	2	2	4	4	4	6	5	4	5	6	11	4	3	7	21	3	8	6	3	3	5
3	3	2	1	1	1	1	5	6	7	9	6	8	6	16	13	10	9	5	4	4	6	7	3	6	6
4	6	3	2	0	0	0	2	5	9	11	7	7	7	8	10	11	19	11	9	7	5	6	5	5	6
5	4	3	7	13	15	8	8	9	11	11	14	13	8	11	11	13	11	14	12	8	6	7	11	9	10
6	10	14	15	9	8	6	11	8	8	11	10	10	7	8	9	10	12	12	12	10	8	6	6	7	9
7	6	4	3	3	4	3	3	6	6	11	13	11	10	10	10	10	13	14	15	18	16	15	13	12	10
8	7	4	8	4	2	4	3	5	4	4	6	8	8	8	19	13	15	14	21	17	23	23	22	3	10
9	3	3	2	1	1	1	1	2	1	2	3	4	2	1	5	11	6	5	9	2	5	5	2	1	3
10	1	0	0	0	1	2	2	3	7	10	12	12	14	21	19	22	26	24	20	4	3	1	2	6	9
11	4	2	1	1	1	1	3	4	17	24	26	26	24	19	23	23	11	9	5	2	3	2	1	1	10
12	1	2	2	2	1	2	6	7	5	7	19	35	16	9	26	9	14	7	3	2	3	4	2	7	8
13	1	1	0	0	0	0	1	14	13	14	26	22	11	8	12	17	21	24	14	1	1	2	2	14	9
14	1	0	0	0	0	1	2	5	12	12	9	9	15	18	18	20	24	15	9	7	6	5	3	4	8
15	2	2	4	2	1	1	2	4	6	20	28	32	18	14	16	16	20	22	34	28	22	21	12	11	14
16	9	7	4	3	3	2	2	3	2	3	3	3	3	3	4	6	7	6	8	5	5	4	4	3	4
17	3	3	2	2	2	3	4	9	11	10	10	9	8	8	9	12	10	4	5	7	5	6	6	9	7
18	9	8	5	4	2	3	4	8	10	12	15	12	6	6	7	8	9	10	11	12	8	12	12	6	8
19	8	7	6	5	4	7	8	11	12	11	7	5	5	6	6	4	3	3	1	1	2	2	2	1	5
20	2	1	1	1	1	1	2	5	7	8	8	9	7	6	6	11	8	10	4	2	1	2	3	3	5
21	3	1	2	1	1	1	2	3	9	11	10	10	6	4	7	16	17	3	2	3	3	3	3	2	5
22	2	1	1	1	1	1	1	1	2	6	8	6	5	4	11	16	36	38	32	18	8	12	4	0	9
23	0	0	0	0	0	0	0	0	0	8	14	8	7	4	12	14	23	20	14	1	4	3	1	28	7
24	23	43	7	0	0	1	0	0	0	5	4	5	6	13	29	48	31	44	40	18	5	17	17	1	15
25	1	1	3	2	1	0	1	1	2	6	9	13	16	11	13	22	33	22	30	59	19	5	7	3	12
26	3	M	1	1	16	8	2	7	6	7	7	7	5	6	18	18	15	11	10	7	6	8	7	5	8
27	3	3	1	3	1	1	3	3	12	10	14	12	7	9	7	9	8	7	7	8	8	13	9	7	7
28	6	3	2	5	6	5	4	8	9	10	6	6	6	6	6	6	10	12	8	7	8	6	5	4	6
29	3	4	5	5	4	4	4	5	6	6	7	7	7	9	9	17	19	23	17	10	9	8	8	7	8
30	5	5	3	3	3	3	4	6	5	6	7	5	4	4	6	6	8	9	9	7	9	8	8	7	6
31	7	5	3	2	2	4	5	10	11	12	11	10	10	9	9	10	13	12	10	11	10	8	9	5	8

MONTHLY STATISTICS:

GEOM	ARITH-----PERCENTILES-----							-----RANGE-----					STN GEOM	PERCENT	NO. OF TIMES	
MEAN	MEDIAN	MEAN	50	90	95	98	99	1-HR	24-HR	DEVIATION	VALID DATA	ABOVE	LIMIT	LEVEL		
6	6	8	6	17	22	28	35	0	-	59	3	-	15	2	100	0

NOTES: 1. FLAGS FOR INVALID DATA :
D: DYNAMIC CALIBRATION
T: TELEMETRY/DATALOGGR FAULT
M: MAINTENANCE OR ANALYZER FAULT
P: POWER FAILURE

THE HONGKONG ELECTRIC COMPANY, LTD.
AIR QUALITY DATA MONTHLY TIME SERIES REPORT

STATION : CHUNG HOM KOK ZONE SUBSTATION
POLLUTANT : SULPHUR DIOXIDE

MONTH: MARCH

YEAR : 2025

UNIT : MICROGRAMS/CUBIC METER

DAY	1	2	3	4	5	6	7	8	9	10	11	12	13	14	15	16	17	18	19	20	21	22	23	24	MEAN
1	1	1	1	0	0	1	0	1	0	0	0	1	1	0	1	1	1	1	1	1	1	0	1	2	1
2	1	1	1	1	1	1	1	1	1	0	1	0	1	0	1	1	1	2	1	1	1	0	1	2	1
3	1	1	0	0	1	1	1	1	1	1	1	1	2	0	2	1	1	1	1	1	1	1	1	3	1
4	1	1	1	1	1	1	1	1	1	1	1	1	1	1	2	2	1	1	1	1	1	1	1	1	1
5	1	1	1	1	1	1	1	1	1	1	1	1	1	1	1	1	1	1	0	0	0	0	0	2	1
6	1	1	0	0	1	1	0	0	1	0	0	0	0	1	1	1	1	1	0	0	0	0	0	2	1
7	0	0	0	0	0	0	0	0	0	0	0	0	0	1	1	1	1	1	0	0	0	0	0	1	0
8	1	0	0	0	0	0	0	0	0	1	1	1	1	2	0	0	1	1	1	1	1	1	1	3	1
9	1	0	1	0	0	0	0	0	1	1	1	1	1	1	1	1	1	1	1	1	1	1	1	3	1
10	1	1	1	1	2	2	2	1	2	1	1	1	3	2	1	1	1	1	1	1	1	1	1	3	1
11	1	1	1	1	1	1	1	1	1	1	1	1	1	1	1	1	1	1	1	1	1	1	1	3	1
12	1	1	1	1	1	1	0	0	0	1	7	4	7	3	2	1	0	1	1	1	1	1	1	3	2
13	1	1	1	1	1	1	1	2	1	2	2	1	1	1	2	3	3	1	2	2	2	2	1	2	2
14	1	1	1	1	1	1	1	1	0	0	1	0	0	0	0	0	0	0	1	0	0	0	0	3	1
15	1	1	1	0	0	1	1	1	0	0	0	0	0	0	0	0	2	2	1	1	1	1	0	3	1
16	1	1	1	1	1	0	0	0	0	1	1	1	1	1	1	0	0	0	1	1	1	0	0	2	1
17	0	0	0	0	0	0	0	0	0	0	1	1	1	0	0	M	0	1	1	1	1	1	1	3	1
18	2	2	1	1	1	1	1	1	1	0	1	1	1	1	1	1	1	1	1	1	1	1	1	2	1
19	2	1	1	0	1	1	1	1	2	3	3	2	2	1	1	1	2	2	1	2	2	2	2	3	2
20	1	1	0	0	1	1	1	1	1	2	2	2	2	1	2	2	2	2	1	2	1	1	1	3	1
21	1	1	1	1	1	1	1	2	2	2	2	2	2	2	2	2	2	2	2	2	2	2	2	1	2
22	2	2	1	1	1	1	1	1	1	1	1	1	1	1	1	1	0	1	2	3	3	2	2	3	1
23	2	3	2	2	3	3	2	2	2	7	4	1	2	1	1	2	2	4	6	3	2	2	2	2	3
24	3	2	2	2	3	5	2	2	4	11	10	9	6	4	4	4	3	2	3	3	2	2	3	4	4
25	2	2	2	2	2	2	2	1	2	3	5	8	4	4	3	3	4	3	2	3	2	2	2	4	3
26	1	1	1	1	1	2	1	2	1	1	1	1	M	2	2	3	3	2	3	2	2	3	2	4	2
27	3	3	2	2	4	1	1	2	2	2	1	1	1	1	1	1	1	2	1	1	2	3	3	2	2
28	2	2	2	1	1	1	1	1	1	1	1	1	1	1	1	1	0	1	1	1	1	1	1	3	1
29	1	1	1	0	0	0	0	0	0	0	0	0	0	1	1	1	1	1	1	0	0	0	0	3	1
30	1	0	0	0	0	0	0	0	0	0	0	0	1	1	0	0	0	0	0	0	0	0	0	2	0
31	0	0	0	0	0	0	0	0	0	0	1	1	1	1	1	1	1	1	1	0	0	0	0	1	0

MONTHLY STATISTICS:

GEOM	ARITH-----PERCENTILES-----							RANGE-----				STN GEOM	PERCENT	NO. OF TIMES		
MEAN	MEDIAN	MEAN	50	90	95	98	99	1-HR		24-HR		DEVIATION	VALID DATA	ABOVE LIMIT LEVEL		
1	1	1	1	2	3	4	6	0	-	11	0	-	4	2	100	0

- NOTES: 1. FLAGS FOR INVALID DATA :
- D: DYNAMIC CALIBRATION
 - T: TELEMETRY/DATALOGGR FAULT
 - M: MAINTENANCE OR ANALYZER FAULT
 - P: POWER FAILURE

THE HONGKONG ELECTRIC COMPANY, LTD.
AIR QUALITY DATA MONTHLY TIME SERIES REPORT

STATION : CHUNG HOM KOK ZONE SUBSTATION
POLLUTANT : NITROGEN DIOXIDE

MONTH: MARCH

YEAR : 2025

UNIT : MICROGRAMS/CUBIC METER

DAY	1	2	3	4	5	6	7	8	9	10	11	12	13	14	15	16	17	18	19	20	21	22	23	24	MEAN
1	11	6	4	5	4	5	7	6	9	8	11	6	6	5	7	10	10	13	10	13	15	13	12	13	9
2	12	12	11	13	12	12	11	14	15	10	11	11	10	10	3	3	15	18	36	23	22	16	18	13	14
3	11	6	5	4	4	5	9	13	9	7	9	8	18	4	18	10	5	19	24	29	25	23	27	29	13
4	18	12	6	8	8	11	13	18	21	22	19	12	9	15	29	25	11	17	18	21	17	18	22	19	16
5	33	40	24	25	17	15	15	13	16	11	9	9	9	10	12	12	12	12	10	6	8	10	10	15	15
6	13	20	21	18	13	9	12	17	33	37	36	41	32	34	36	41	41	33	27	22	16	11	11	13	24
7	13	11	9	7	7	8	9	11	13	15	22	33	34	33	39	41	45	52	49	28	23	18	14	15	23
8	17	18	14	12	12	10	12	13	13	14	14	14	12	26	9	9	10	13	16	22	16	31	21	16	15
9	11	12	11	8	7	7	7	8	8	9	9	9	8	10	10	13	17	17	15	9	12	11	10	8	10
10	8	6	7	8	9	11	12	13	13	11	13	9	12	12	11	11	12	10	10	10	9	11	11	13	11
11	12	10	9	8	7	7	6	6	7	15	15	9	8	9	12	9	6	11	14	7	9	6	5	6	9
12	6	M	5	3	4	4	5	7	10	29	92	69	78	56	40	16	15	10	3	6	5	3	3	4	21
13	3	4	6	7	8	25	27	41	35	37	43	22	7	6	20	23	33	24	42	68	58	48	38	20	27
14	12	13	11	9	4	6	11	17	12	10	9	12	10	10	9	11	12	14	10	9	7	7	7	7	10
15	5	11	10	6	4	6	7	8	7	11	15	13	7	5	4	16	49	60	60	59	60	30	21	17	20
16	16	13	11	11	10	9	11	9	10	9	10	11	8	11	11	9	9	10	11	12	11	9	9	9	10
17	8	7	7	6	6	7	8	12	14	15	14	13	13	17	16	M	16	13	10	11	12	20	18	20	12
18	28	29	23	13	12	12	16	16	16	31	34	36	32	16	15	16	18	19	19	19	18	23	18	18	21
19	10	9	11	13	17	21	20	22	25	20	14	10	11	9	11	12	13	16	13	11	24	11	10	11	14
20	11	10	9	10	10	10	12	12	16	12	14	12	12	11	12	15	20	29	18	24	12	14	13	12	14
21	12	10	11	10	8	8	9	10	14	20	14	14	13	13	13	13	13	20	20	22	24	21	16	15	14
22	13	12	11	11	10	9	9	10	15	13	13	12	10	9	9	10	8	23	51	34	23	13	9	10	14
23	10	23	19	13	14	17	15	26	31	70	41	11	11	10	10	13	19	27	36	22	12	12	11	20	21
24	23	12	9	10	22	48	12	14	41	81	80	62	37	26	28	22	17	19	30	20	24	17	20	17	29
25	13	13	13	8	8	16	19	16	18	23	41	54	27	21	25	22	43	39	23	43	25	20	16	16	23
26	13	M	7	10	12	17	15	22	10	7	5	9	M	12	8	16	15	19	50	24	26	37	20	25	17
27	30	37	16	20	25	8	12	14	14	23	6	4	9	4	21	8	10	16	19	30	27	44	41	13	19
28	18	18	15	19	17	26	18	13	21	20	20	13	11	10	10	11	12	20	22	14	11	8	5	10	15
29	8	10	9	10	11	10	9	13	12	13	14	16	18	18	20	20	32	47	41	34	32	25	21	21	19
30	19	15	13	14	12	11	12	12	10	9	10	12	20	21	22	18	20	26	27	22	18	21	16	14	16
31	10	15	13	11	10	11	14	18	22	37	40	46	46	50	44	50	53	54	60	52	51	43	39	32	34

MONTHLY STATISTICS:

GEOM	ARITH-----PERCENTILES-----							-----RANGE-----				STN GEOM	PERCENT	NO. OF TIMES		
MEAN	MEDIAN	MEAN	50	90	95	98	99	1-HR		24-HR		DEVIATION	VALID DATA	ABOVE LIMIT LEVEL		
14	13	17	13	33	43	54	61	3	-	92	9	-	34	2	99	0

NOTES: 1. FLAGS FOR INVALID DATA :
D: DYNAMIC CALIBRATION
T: TELEMETRY/DATALOGGR FAULT
M: MAINTENANCE OR ANALYZER FAULT
P: POWER FAILURE

THE HONGKONG ELECTRIC COMPANY, LTD.
AIR QUALITY DATA MONTHLY TIME SERIES REPORT

STATION : VICTORIA ROAD SUBSTATION
POLLUTANT : SULPHUR DIOXIDE

MONTH: MARCH

YEAR : 2025
UNIT : MICROGRAMS/CUBIC METER

DAY	1	2	3	4	5	6	7	8	9	10	11	12	13	14	15	16	17	18	19	20	21	22	23	24	MEAN
1	2	2	2	2	2	2	2	2	2	2	2	3	3	2	2	2	2	2	2	2	2	2	2	2	2
2	2	2	2	2	2	2	2	2	2	2	3	2	3	2	2	2	3	2	2	2	2	2	2	2	2
3	2	2	2	2	2	2	2	2	2	2	2	2	2	2	2	3	2	2	2	2	2	2	2	2	2
4	2	2	2	2	2	2	2	2	2	2	2	2	2	2	2	2	2	2	2	2	2	2	2	2	2
5	2	2	3	3	3	3	3	3	2	2	2	2	2	2	2	2	2	2	2	2	2	2	2	2	2
6	2	2	1	2	1	2	2	2	2	2	2	2	2	2	2	2	2	2	2	2	1	1	1	2	2
7	1	1	1	1	1	1	1	1	1	2	2	2	2	2	2	2	2	2	2	2	2	2	1	1	2
8	1	2	1	1	1	1	1	1	2	1	1	1	2	2	2	2	2	2	2	1	1	2	2	1	1
9	1	1	1	1	1	1	1	1	1	1	1	1	1	1	1	2	1	1	1	1	1	2	2	1	1
10	1	2	1	1	2	2	2	2	2	2	2	2	2	2	2	2	2	1	2	2	2	2	2	1	2
11	1	2	2	1	2	2	2	2	2	2	3	2	3	3	2	2	2	2	2	2	2	2	2	2	2
12	2	2	2	2	2	2	2	2	2	3	3	3	3	4	3	3	3	3	2	2	2	2	2	2	2
13	2	2	2	2	2	2	2	3	3	3	4	2	2	3	3	4	3	2	3	3	3	3	3	3	3
14	3	3	3	3	3	3	3	2	2	2	2	2	2	2	3	2	2	2	2	2	2	2	2	2	2
15	2	2	2	2	2	2	2	2	2	2	4	3	2	2	2	2	2	2	2	2	2	2	2	2	2
16	2	2	2	2	2	2	2	2	2	2	2	2	2	2	2	1	2	2	2	2	2	2	2	2	2
17	1	1	2	2	2	1	1	1	1	2	1	1	1	1	1	1	2	1	1	1	1	1	1	1	1
18	2	2	2	1	1	1	2	1	1	1	1	2	2	1	2	1	1	1	1	1	1	2	1	1	1
19	1	1	1	2	1	1	1	1	2	2	2	2	1	2	2	1	1	2	2	2	1	1	1	1	1
20	1	1	1	1	1	1	1	1	1	1	2	2	2	1	2	2	2	2	2	1	1	1	2	1	1
21	1	1	1	1	1	1	1	2	2	2	1	2	1	2	2	2	2	2	2	1	1	1	1	1	1
22	1	1	1	1	1	1	1	2	2	3	2	2	2	2	2	2	2	3	2	2	2	2	2	1	2
23	1	1	2	1	1	1	2	2	1	2	2	2	2	2	2	2	2	2	2	2	1	2	2	2	2
24	1	1	1	2	1	1	2	2	2	2	1	2	2	2	2	3	2	1	2	2	2	2	2	2	2
25	1	2	1	2	1	1	2	2	2	3	2	2	2	2	2	3	2	2	2	2	2	2	2	2	2
26	2	2	2	2	2	2	2	2	2	2	2	2	2	2	2	2	2	2	2	2	2	2	2	2	2
27	2	2	2	2	2	2	2	2	2	3	2	2	2	2	2	3	2	2	2	2	2	2	2	2	2
28	2	2	2	2	2	2	2	2	2	3	2	2	2	2	3	2	2	2	2	2	2	2	2	2	2
29	2	2	2	2	2	2	2	2	2	2	2	2	2	1	2	2	2	2	2	2	2	1	1	2	2
30	1	2	1	2	1	2	2	2	2	1	1	2	2	1	2	2	2	1	2	2	1	2	2	1	2
31	1	2	2	1	2	2	1	2	2	2	2	2	2	2	2	2	2	2	2	2	2	2	1	2	2

MONTHLY STATISTICS:

GEOM	ARITH-----PERCENTILES-----							RANGE-----					STN GEOM	PERCENT	NO. OF TIMES	
MEAN	MEDIAN	MEAN	50	90	95	98	99	1-HR		24-HR			DEVIATION	VALID DATA	ABOVE LIMIT LEVEL	
2	2	2	2	2	3	3	3	1	-	4	1	-	3	1	100	0

- NOTES: 1. FLAGS FOR INVALID DATA :
- D: DYNAMIC CALIBRATION
 - T: TELEMETRY/DATALOGGR FAULT
 - M: MAINTENANCE OR ANALYZER FAULT
 - P: POWER FAILURE

THE HONGKONG ELECTRIC COMPANY, LTD.
AIR QUALITY DATA MONTHLY TIME SERIES REPORT
MONTH: MARCH

STATION : VICTORIA ROAD SUBSTATION
POLLUTANT : NITROGEN DIOXIDE

YEAR : 2025
UNIT : MICROGRAMS/CUBIC METER

DAY	1	2	3	4	5	6	7	8	9	10	11	12	13	14	15	16	17	18	19	20	21	22	23	24	MEAN
1	20	5	3	7	11	7	8	18	23	21	23	25	20	13	12	11	11	8	5	5	5	4	5	4	11
2	4	4	3	4	3	4	4	7	7	10	10	8	10	9	9	5	19	19	20	23	25	19	18	7	10
3	7	5	4	12	14	10	8	8	11	10	11	9	9	8	10	12	7	11	20	21	31	26	22	17	13
4	6	9	17	9	11	12	14	18	13	15	18	15	12	15	23	10	12	13	15	11	8	8	7	11	13
5	17	15	16	19	19	14	12	10	11	9	11	9	9	8	9	8	9	9	7	6	5	5	8	14	11
6	6	15	10	5	3	3	4	5	9	10	10	10	8	9	10	11	12	13	13	11	10	8	7	7	9
7	8	5	4	4	4	3	3	6	9	11	12	13	12	13	14	14	15	15	18	17	18	18	16	14	11
8	13	10	12	9	5	8	7	7	10	11	10	13	18	28	27	15	8	19	18	14	12	15	18	10	13
9	6	5	5	4	4	4	5	6	7	7	8	9	7	5	6	8	7	19	18	15	18	30	12	13	10
10	7	13	5	11	7	6	11	17	18	17	26	28	28	28	30	24	21	23	19	10	10	25	16	26	18
11	17	13	15	16	17	13	15	23	26	23	30	26	28	26	23	25	19	15	17	23	28	33	29	32	22
12	29	M	20	21	15	14	20	22	21	24	23	22	27	26	33	33	30	28	22	16	16	17	19	11	22
13	12	15	11	11	8	14	11	18	20	25	27	19	18	20	19	32	26	24	25	26	27	23	18	18	19
14	18	17	12	14	15	12	15	13	15	17	17	20	20	20	24	22	17	22	28	34	22	26	24	21	19
15	28	16	15	9	7	13	15	20	18	19	34	18	16	9	13	14	16	14	15	17	18	11	7	6	15
16	5	4	3	3	3	3	3	4	5	8	7	7	7	7	7	6	6	5	6	5	6	6	6	6	5
17	5	4	3	3	3	4	5	8	11	12	13	13	10	10	11	13	20	16	12	9	9	7	8	11	9
18	15	11	7	5	4	5	7	11	12	18	21	18	14	12	14	12	13	14	16	15	15	17	19	13	13
19	12	9	8	8	6	8	11	20	21	20	15	12	11	9	11	12	10	10	13	18	15	10	9	7	12
20	6	4	4	4	4	5	8	13	16	14	13	16	15	10	16	17	29	22	16	11	10	8	8	11	12
21	8	6	4	4	4	6	13	24	27	27	26	36	20	18	26	30	19	20	18	11	10	9	8	6	16
22	6	6	6	5	3	3	5	25	30	35	24	22	18	20	19	33	31	47	41	28	23	17	17	14	20
23	7	8	5	9	9	7	5	7	11	23	29	30	12	14	14	11	11	14	13	18	14	7	7	9	12
24	9	5	4	3	2	2	4	14	33	17	15	6	9	16	30	38	17	12	15	12	11	18	10	4	13
25	5	5	4	2	2	2	3	5	11	28	21	15	18	14	19	25	19	20	13	10	9	9	11	7	12
26	5	M	4	3	4	5	6	14	13	8	9	8	4	6	9	11	13	12	11	13	12	11	11	8	9
27	7	7	5	4	3	3	7	10	18	21	15	12	13	11	12	13	12	12	16	15	12	14	11	11	11
28	8	5	5	6	5	5	6	10	13	14	14	13	11	12	13	11	8	12	10	8	6	6	5	4	9
29	4	3	3	3	4	4	3	4	5	7	8	7	7	7	8	11	11	12	12	10	9	8	8	6	7
30	6	5	4	4	4	3	4	5	5	7	7	6	6	6	7	6	7	8	9	9	10	8	8	7	6
31	7	6	5	4	4	6	9	9	11	12	12	12	13	13	13	13	14	14	15	14	13	10	10	9	10

MONTHLY STATISTICS:

GEOM	ARITH-----PERCENTILES-----								-----RANGE-----				STN GEOM	PERCENT	NO. OF TIMES	
MEAN	MEDIAN	MEAN	50	90	95	98	99	1-HR	24-HR	DEVIATION	VALID DATA	ABOVE	LIMIT	LEVEL		
11	11	13	11	23	28	31	33	2	-	47	5	-	22	2	100	0

- NOTES: 1. FLAGS FOR INVALID DATA :
- D: DYNAMIC CALIBRATION
 - T: TELEMETRY/DATALOGGR FAULT
 - M: MAINTENANCE OR ANALYZER FAULT
 - P: POWER FAILURE

THE HONGKONG ELECTRIC COMPANY, LTD.
AIR QUALITY DATA MONTHLY TIME SERIES REPORT
MONTH: MARCH

STATION : AP LEI CHAU
POLLUTANT : SULPHUR DIOXIDE

YEAR : 2025
UNIT : MICROGRAMS/CUBIC METER

DAY	1	2	3	4	5	6	7	8	9	10	11	12	13	14	15	16	17	18	19	20	21	22	23	24	MEAN	
1	8	8	8	8	8	8	8	8	8	8	8	8	8	8	8	8	8	8	8	8	8	8	8	8	9	8
2	8	8	8	8	8	8	8	8	8	8	8	8	8	8	9	8	9	10	9	8	8	8	8	8	8	8
3	8	8	8	8	8	8	8	8	8	8	8	8	9	9	11	11	9	8	8	13	10	8	8	8	9	9
4	8	8	8	8	8	8	8	8	8	8	8	10	8	8	12	9	9	8	8	8	8	8	8	8	8	8
5	8	8	9	11	11	9	8	8	8	8	8	7	8	8	8	8	8	7	7	7	7	7	7	7	8	8
6	8	8	8	7	7	7	7	7	8	8	8	8	8	8	8	8	8	8	8	7	8	7	7	7	7	8
7	7	7	7	8	8	7	7	7	7	7	8	8	8	8	8	8	8	8	7	8	8	8	8	8	8	8
8	8	8	7	7	7	7	7	7	8	8	7	9	9	10	10	8	8	10	9	8	9	8	8	8	9	8
9	8	8	8	8	7	7	7	7	7	8	8	8	8	7	8	8	8	8	8	8	8	8	8	8	8	8
10	8	7	8	8	8	8	8	8	8	8	8	8	8	10	10	8	8	8	8	7	7	7	7	8	8	8
11	8	8	8	9	10	9	8	9	12	11	18	25	18	14	12	9	8	8	8	8	8	8	8	8	9	11
12	8	8	8	8	8	8	8	8	8	10	10	10	10	11	10	10	10	8	8	8	8	8	8	8	10	9
13	8	8	8	8	9	10	10	18	14	12	9	8	8	10	10	18	11	9	8	11	13	12	10	11	11	
14	9	8	8	8	8	8	8	8	8	8	8	8	8	7	8	7	8	7	7	8	8	8	8	8	8	8
15	8	8	8	8	8	9	9	8	8	11	8	8	8	7	9	9	9	11	10	8	8	8	8	8	7	8
16	8	8	7	7	8	8	8	7	7	8	8	8	8	8	8	8	8	8	8	8	8	7	7	8	8	8
17	7	7	7	7	7	7	7	7	7	7	8	8	8	8	8	8	8	8	8	8	8	7	8	8	8	8
18	8	8	8	8	8	8	8	8	8	8	8	8	9	8	8	8	8	8	8	8	8	8	8	8	9	8
19	8	8	8	8	8	8	8	8	10	10	9	9	9	9	8	8	9	8	8	8	8	8	8	8	8	8
20	8	8	7	7	7	8	8	8	8	9	9	9	9	8	9	9	M	0	0	0	0	0	0	0	0	6
21	0	0	0	0	0	0	0	0	0	0	0	0	0	0	0	M	M	0	0	0	0	0	0	0	0	0
22	0	0	0	0	0	0	0	0	0	0	0	0	0	0	0	0	1	1	2	0	0	0	0	0	0	0
23	0	0	0	0	0	0	0	0	0	0	1	0	0	1	0	0	0	1	1	0	0	0	0	0	0	0
24	0	0	0	0	0	0	0	0	1	0	3	0	0	0	0	M	M	2	1	1	1	1	1	7	3	1
25	2	1	1	1	1	1	1	1	2	2	3	3	3	3	4	4	2	3	4	3	3	2	2	2	2	2
26	2	1	1	1	1	1	1	2	1	2	2	1	4	2	1	1	3	1	1	1	1	1	2	2	2	2
27	1	2	1	3	1	1	1	3	3	1	2	2	1	1	1	1	1	1	1	1	2	2	2	3	2	2
28	1	1	1	1	1	0	0	0	0	1	1	1	0	0	0	0	0	0	0	0	0	0	0	0	1	0
29	0	0	0	0	0	0	0	0	0	0	0	0	0	0	0	0	0	0	0	0	0	0	0	0	0	0
30	0	0	0	0	0	0	0	0	0	0	0	0	0	0	0	0	0	0	0	0	0	0	0	0	0	0
31	0	0	0	0	0	0	0	0	0	1	1	1	1	1	1	M	M	2	1	1	0	0	0	1	1	1

MONTHLY STATISTICS:

GEOM	ARITH-----PERCENTILES-----							RANGE-----				STN GEOM	PERCENT	NO. OF TIMES		
MEAN	MEDIAN	MEAN	50	90	95	98	99	1-HR		24-HR		DEVIATION	VALID DATA	ABOVE LIMIT LEVEL		
6	8	6	8	9	10	11	13	0	-	25	0	-	11	2	99	0

- NOTES: 1. FLAGS FOR INVALID DATA :
- D: DYNAMIC CALIBRATION
 - T: TELEMETRY/DATALOGGR FAULT
 - M: MAINTENANCE OR ANALYZER FAULT
 - P: POWER FAILURE

THE HONGKONG ELECTRIC COMPANY, LTD.
AIR QUALITY DATA MONTHLY TIME SERIES REPORT
MONTH: MARCH

STATION : AP LEI CHAU
POLLUTANT : NITROGEN DIOXIDE

YEAR : 2025
UNIT : MICROGRAMS/CUBIC METER

DAY	1	2	3	4	5	6	7	8	9	10	11	12	13	14	15	16	17	18	19	20	21	22	23	24	MEAN
1	4	3	2	1	1	5	15	18	11	8	8	6	5	5	5	6	3	3	4	4	4	4	4	2	5
2	4	4	4	5	4	4	3	3	4	3	3	3	6	5	15	10	18	25	12	7	4	5	3	4	7
3	3	2	1	2	2	2	2	2	4	3	3	4	13	14	26	23	12	10	11	47	13	7	6	7	9
4	7	6	16	M	8	3	8	4	7	9	7	8	2	8	38	17	10	4	7	2	4	6	5	6	8
5	3	4	25	39	36	23	12	10	12	10	10	8	8	9	10	12	11	12	11	7	7	7	12	15	13
6	13	26	19	14	11	10	13	17	24	28	26	30	20	23	26	29	31	35	35	31	28	21	19	22	23
7	21	15	11	12	13	9	10	14	18	25	32	30	21	23	26	29	37	40	42	49	46	39	30	19	25
8	19	16	12	12	10	11	13	14	10	10	14	24	27	30	20	5	9	32	22	25	36	25	28	14	18
9	9	8	7	5	4	6	6	5	5	6	7	7	5	3	5	7	7	26	14	21	10	7	8	5	8
10	5	5	3	8	6	5	8	10	11	9	14	14	12	31	26	7	4	10	6	7	6	6	11	18	10
11	20	10	28	37	44	38	31	29	58	58	72	77	64	39	30	11	7	5	5	4	7	8	10	6	29
12	8	5	15	12	11	10	25	19	36	62	54	55	56	47	40	21	10	9	10	4	6	4	2	8	22
13	5	10	9	33	42	53	49	56	48	29	18	10	7	12	12	39	29	11	19	56	57	40	25	29	29
14	18	16	7	9	6	5	5	8	8	8	6	8	7	7	7	6	9	7	8	21	23	6	8	9	9
15	3	4	13	11	10	33	36	19	17	25	12	5	8	4	15	26	33	40	42	46	44	28	16	16	21
16	12	10	8	7	7	7	8	10	9	12	10	10	10	12	10	9	9	11	11	14	12	11	10	12	10
17	9	8	8	7	8	9	12	21	23	30	25	15	13	19	15	29	16	9	12	14	12	14	16	26	15
18	28	M	16	12	10	11	15	20	25	33	36	42	22	19	18	19	20	26	22	18	15	32	33	43	23
19	37	31	24	9	10	16	20	27	34	28	10	8	7	5	6	5	6	6	9	9	11	22	15	10	15
20	9	7	6	6	6	7	11	15	11	10	12	8	10	6	20	12	M	16	10	8	10	9	16	9	10
21	12	8	7	7	6	10	13	19	18	10	17	17	11	11	6	M	M	8	9	11	10	15	15	11	11
22	9	10	10	6	8	8	12	15	37	54	28	10	5	11	14	37	39	53	50	18	12	28	20	11	21
23	7	6	9	14	35	36	33	24	32	29	32	18	5	9	8	9	21	39	47	7	22	31	20	17	21
24	10	8	16	10	21	9	14	17	52	37	54	38	28	30	45	24	19	20	22	14	11	13	19	22	23
25	18	9	6	6	9	8	8	11	15	25	27	18	25	28	27	35	27	36	21	32	29	21	19	12	20
26	9	13	7	8	5	10	12	9	4	12	11	8	13	13	13	11	22	15	15	15	16	16	21	20	12
27	15	29	8	16	12	3	6	31	21	15	8	5	8	1	8	8	7	14	13	22	18	21	22	25	14
28	10	13	12	16	12	6	4	6	8	10	8	3	4	3	4	2	3	7	7	7	8	5	4	6	7
29	5	5	6	6	7	7	8	9	12	13	14	15	14	14	17	22	33	32	33	28	24	23	21	22	16
30	17	14	12	11	10	10	12	14	16	15	17	15	14	15	17	18	17	22	23	24	26	26	22	21	17
31	19	16	12	9	8	12	19	21	26	35	33	31	32	31	31	M	M	41	40	40	35	34	25	24	26

MONTHLY STATISTICS:

GEOM	ARITH-----PERCENTILES-----										RANGE-----				STN GEOM	PERCENT	NO. OF TIMES
MEAN	MEDIAN	MEAN	50	90	95	98	99	1-HR		24-HR		DEVIATION	VALID DATA	ABOVE	LIMIT	LEVEL	
12	12	16	12	33	40	53	56	1	-	77	5	-	29	2	99	0	

- NOTES: 1. FLAGS FOR INVALID DATA :
- D: DYNAMIC CALIBRATION
 - T: TELEMETRY/DATALOGGR FAULT
 - M: MAINTENANCE OR ANALYZER FAULT
 - P: POWER FAILURE

THE HONGKONG ELECTRIC COMPANY, LTD.
AIR QUALITY DATA MONTHLY TIME SERIES REPORT
MONTH: MARCH

STATION : CHEUNG CHAU
POLLUTANT : SULPHUR DIOXIDE

YEAR : 2025
UNIT : MICROGRAMS/CUBIC METER

DAY	1	2	3	4	5	6	7	8	9	10	11	12	13	14	15	16	17	18	19	20	21	22	23	24	MEAN
1	2	2	2	2	2	2	2	3	3	4	5	4	3	3	2	2	2	2	2	2	2	2	2	3	3
2	2	2	2	2	2	2	2	2	2	2	2	2	3	3	4	5	3	5	5	4	2	2	3	3	3
3	2	2	3	2	2	3	2	3	3	3	3	2	2	3	3	3	6	5	6	4	5	3	3	3	3
4	3	3	3	3	3	4	4	4	3	5	6	5	5	5	4	4	3	3	4	5	5	5	4	4	4
5	3	3	3	4	3	4	3	3	3	3	3	3	3	3	3	3	3	3	2	2	2	2	2	3	3
6	2	2	2	2	2	2	2	1	1	1	1	2	2	2	2	2	2	2	2	2	1	1	2	2	2
7	1	1	2	2	2	2	2	2	2	2	2	2	2	2	2	2	2	1	2	1	1	2	1	2	2
8	2	1	2	1	2	1	1	2	2	2	3	3	3	3	3	3	3	2	3	2	2	2	2	2	2
9	2	2	2	2	2	2	2	2	2	2	2	2	2	2	2	2	2	2	2	2	3	2	2	2	2
10	2	2	2	2	2	3	3	3	3	3	3	3	3	3	4	4	3	3	3	2	2	2	2	3	3
11	3	2	2	3	3	3	3	3	4	4	5	5	4	4	3	4	3	3	3	3	4	3	3	4	3
12	3	3	3	3	3	3	3	2	3	3	3	4	4	4	3	4	4	4	3	3	3	6	3	3	3
13	3	3	3	3	3	3	3	4	5	7	7	5	5	6	7	6	4	4	4	3	5	4	4	5	4
14	4	4	5	4	4	5	7	3	3	3	3	3	3	3	3	3	3	2	2	3	3	3	3	3	3
15	3	3	3	3	3	3	3	3	3	4	4	3	3	3	2	3	3	3	3	3	3	3	3	3	3
16	2	2	2	2	2	2	2	2	2	2	2	2	2	2	3	3	2	3	3	3	2	2	2	3	2
17	2	2	1	2	2	2	2	1	1	1	2	2	2	2	3	2	2	2	2	2	2	2	2	3	2
18	2	2	2	2	2	2	2	2	2	2	2	2	2	3	3	3	3	3	2	3	3	3	2	3	2
19	2	2	4	3	3	2	3	3	4	5	4	5	3	3	3	4	3	3	3	3	2	2	2	3	3
20	2	2	2	2	2	2	2	2	3	3	3	3	3	4	M	5	4	4	4	3	2	3	3	3	3
21	2	2	2	2	2	2	2	3	3	5	4	4	4	4	4	5	5	5	4	4	3	2	2	3	3
22	3	3	3	3	4	4	3	3	3	5	5	4	3	4	4	4	5	6	4	3	3	3	3	3	4
23	3	4	4	5	5	5	4	4	7	9	7	5	5	5	5	4	4	5	3	3	3	3	3	4	5
24	3	3	3	3	3	3	3	4	5	4	4	4	4	4	5	4	4	3	3	3	3	3	3	4	4
25	3	3	4	3	3	3	3	5	5	5	4	5	5	5	5	4	5	4	3	3	3	3	3	3	4
26	3	3	3	3	3	3	3	3	4	5	5	4	4	5	4	4	4	4	3	3	3	3	3	4	4
27	4	4	4	3	4	6	5	4	5	6	6	6	7	5	5	4	4	3	3	3	3	3	17	3	5
28	3	3	3	4	4	4	5	5	4	6	6	5	4	4	4	4	4	3	3	3	3	3	3	3	4
29	3	3	3	3	2	3	2	3	3	3	3	3	3	3	3	3	3	3	2	2	2	2	2	2	3
30	2	2	2	2	2	2	2	2	2	2	2	2	2	2	2	3	2	2	2	2	2	2	2	3	2
31	2	2	2	2	2	2	2	2	2	2	3	2	3	3	3	3	3	3	2	3	3	3	2	3	2

MONTHLY STATISTICS:

GEOM	ARITH-----PERCENTILES-----							-----RANGE-----				STN GEOM	PERCENT	NO. OF TIMES		
MEAN	MEDIAN	MEAN	50	90	95	98	99	1	-	17	2	-	5	DEVIATION	VALID DATA	ABOVE LIMIT LEVEL
3	3	3	3	5	5	6	7	1	-	17	2	-	5	1	100	0

- NOTES: 1. FLAGS FOR INVALID DATA :
- D: DYNAMIC CALIBRATION
 - T: TELEMETRY/DATALOGGR FAULT
 - M: MAINTENANCE OR ANALYZER FAULT
 - P: POWER FAILURE

THE HONGKONG ELECTRIC COMPANY, LTD.
AIR QUALITY DATA MONTHLY TIME SERIES REPORT
MONTH: MARCH

STATION : CHEUNG CHAU
POLLUTANT : NITROGEN DIOXIDE

YEAR : 2025
UNIT : MICROGRAMS/CUBIC METER

DAY	1	2	3	4	5	6	7	8	9	10	11	12	13	14	15	16	17	18	19	20	21	22	23	24	MEAN
1	31	34	16	12	27	36	42	36	56	95	86	49	17	15	10	8	8	10	10	12	16	14	13	18	28
2	14	21	14	13	18	18	13	16	22	34	21	6	15	15	20	34	14	48	83	81	35	42	79	39	30
3	47	21	52	38	19	50	29	46	46	31	45	24	17	8	11	12	40	59	85	59	60	45	23	45	38
4	29	45	50	50	49	71	49	36	23	32	45	31	38	62	53	54	24	23	64	70	74	68	47	61	48
5	59	38	50	55	53	49	49	24	23	22	17	18	20	16	29	28	22	21	51	20	17	15	18	58	32
6	40	37	24	20	21	16	16	20	24	28	29	31	29	34	40	34	45	36	37	32	26	25	25	25	29
7	24	18	20	20	20	26	35	32	33	38	38	32	28	29	33	39	39	39	41	43	38	38	34	40	32
8	41	40	38	32	36	31	28	38	41	32	37	38	37	32	30	12	9	11	33	23	20	26	25	21	30
9	57	34	15	13	10	10	14	13	13	22	23	9	9	6	8	12	13	16	15	38	111	56	34	60	25
10	30	23	29	38	25	13	21	59	46	79	61	44	31	31	18	27	29	32	31	16	20	52	47	70	36
11	56	54	58	48	53	39	80	82	100	98	98	82	31	36	20	51	10	19	28	49	129	69	53	80	59
12	71	66	40	36	34	62	55	65	82	72	77	90	92	65	33	50	54	28	23	24	14	11	43	31	51
13	17	34	33	35	39	52	57	72	72	64	63	28	33	28	49	34	45	39	56	54	86	65	58	48	48
14	51	63	64	32	64	73	78	26	16	15	14	15	13	10	10	19	32	11	20	112	94	98	78	66	45
15	29	12	24	30	37	43	48	45	46	49	41	28	17	14	9	18	40	42	57	55	50	35	24	22	34
16	16	17	15	13	16	13	16	15	15	14	12	14	15	15	17	18	17	30	36	28	18	20	21	16	18
17	15	12	12	16	11	17	21	26	34	35	38	46	48	43	50	40	38	16	17	23	22	34	56	53	30
18	40	51	47	28	24	23	31	37	37	40	37	34	44	39	41	34	39	36	50	74	53	38	69	104	44
19	68	74	99	48	65	63	67	73	58	56	52	54	24	10	10	16	15	19	18	17	11	33	40	44	43
20	49	50	37	16	17	21	15	20	17	29	32	25	13	13	M	21	30	26	55	26	15	32	42	56	29
21	36	39	33	24	48	71	70	79	90	78	50	44	17	23	22	36	34	39	54	31	21	18	33	41	43
22	34	41	21	29	58	55	74	89	93	75	57	32	18	19	11	13	23	43	35	52	81	83	114	50	50
23	80	63	65	104	72	120	91	92	94	108	63	42	29	20	22	18	15	29	23	21	23	66	55	37	56
24	30	47	27	47	41	75	65	56	78	38	18	19	20	12	18	12	12	14	26	17	17	20	17	15	31
25	12	12	16	13	32	33	49	81	84	77	16	24	20	17	15	13	25	20	22	20	12	17	16	15	28
26	19	M	22	15	12	14	13	24	21	37	21	19	12	11	12	9	13	17	16	16	20	21	17	24	18
27	28	33	19	21	38	71	62	31	34	49	39	30	33	20	22	19	17	14	16	14	20	19	17	16	28
28	15	17	34	39	32	44	48	37	22	34	34	19	18	11	10	19	20	25	21	22	15	13	9	13	24
29	22	26	17	19	18	21	20	27	33	34	40	38	38	43	41	37	37	38	41	39	30	24	18	20	30
30	20	15	13	16	15	18	18	19	18	25	23	22	25	28	29	28	29	26	29	32	32	34	28	22	24
31	19	22	16	15	19	22	22	28	29	33	38	37	36	36	38	40	44	48	52	50	48	48	44	44	35

MONTHLY STATISTICS:

GEOM	ARITH-----PERCENTILES-----							-----RANGE-----					STN GEOM	PERCENT	NO. OF TIMES	
MEAN	MEDIAN	MEAN	50	90	95	98	99	1-HR		24-HR			DEVIATION	VALID DATA	ABOVE LIMIT LEVEL	
30	31	35	31	65	80	94	102	6	-	129	18	-	59	2	100	0

- NOTES: 1. FLAGS FOR INVALID DATA :
- D: DYNAMIC CALIBRATION
 - T: TELEMETRY/DATALOGGR FAULT
 - M: MAINTENANCE OR ANALYZER FAULT
 - P: POWER FAILURE

Appendix C Summary Results on Water Quality Monitoring

LAMMA POWER STATION FGD WASTEWATER TREATMENT PLANT EFFLUENT DISCHARGE TO ASH LAGOON SUSPENDED SOLIDS AND PH

Period : January - March 2025

Week Ending	No. of Samples	Suspended Solids, mg/L			pH		
		Maximum	Minimum	Average	Maximum	Minimum	Average
04/01/25	0*	N/A*	N/A*	N/A*	N/A*	N/A*	N/A*
11/01/25	0*	N/A*	N/A*	N/A*	N/A*	N/A*	N/A*
18/01/25	0*	N/A*	N/A*	N/A*	N/A*	N/A*	N/A*
25/01/25	0*	N/A*	N/A*	N/A*	N/A*	N/A*	N/A*
01/02/25	0*	N/A*	N/A*	N/A*	N/A*	N/A*	N/A*
08/02/25	0*	N/A*	N/A*	N/A*	N/A*	N/A*	N/A*
15/02/25	0*	N/A*	N/A*	N/A*	N/A*	N/A*	N/A*
22/02/25	0*	N/A*	N/A*	N/A*	N/A*	N/A*	N/A*
01/03/25	0*	N/A*	N/A*	N/A*	N/A*	N/A*	N/A*
08/03/25	0*	N/A*	N/A*	N/A*	N/A*	N/A*	N/A*
15/03/25	0*	N/A*	N/A*	N/A*	N/A*	N/A*	N/A*
22/03/25	0*	N/A*	N/A*	N/A*	N/A*	N/A*	N/A*
29/03/25	0*	N/A*	N/A*	N/A*	N/A*	N/A*	N/A*

Remark :

* - No sampling due to no discharge

**LAMMA POWER STATION
FGD WASTEWATER TREATMENT PLANT
EFFLUENT DISCHARGE TO ASH LAGOON
TRACE METAL, TOTAL PHOSPHORUS
AND TOTAL NITROGEN ANALYSIS**

Period : January – March 2025

Sampling date		January	February	March
Barium,	ug/L	N/A*	N/A*	N/A*
Mercury,	ug/L	N/A*	N/A*	N/A*
Cadmium,	ug/L	N/A*	N/A*	N/A*
Iron,	ug/L	N/A*	N/A*	N/A*
Total Phosphorous,	mg/L	N/A*	N/A*	N/A*
Total Nitrogen,	mg/L	N/A*	N/A*	N/A*
Cyanide,	mg/L	N/A*	N/A*	N/A*

Remark:

- (i) According to the WPCO Ash Lagoon Discharge Licence, contents at exact levels of trace metals below 1/10th of the WPCO Licence permitted limits will not be reported. When the concentration of a metal exceeds 1/10th of the limit, the exact value of the metal concentration will be reported.
- (ii) * - No sampling due to no discharge

Appendix D Summary of EMIS

EM&A Log Ref.	Mitigation Measures	Implementation Status
	GENERAL	
A1	No other process, except the Wet Limestone-Gypsum process used in the FGD plants of the coal-fired Units L6, L7 and L8 within the Lamma Power Station, shall be used in the FGD plants for the projects unless otherwise agreed by EPD.	Complied
	WATER QUALITY	
B1	All wastewater arising from the operation of the projects shall be collected and directed to the existing wastewater treatment plant within the Lamma Power Station for treatment.	Complied
B2	The operational plant effluent from the FGD plants should be reused as much as possible in order to minimise discharge to the WWTP.	Complied
B3	Maintenance of the WWTP should be performed regularly to ensure the effluent from the WWTP would not exceed the current requirements stipulated in the WPCO licence for Ash Lagoon.	Complied
	WASTE	
C1	No gypsum or sludge arising from the operation of the projects shall be disposed of anywhere. All gypsum and sludge shall be collected and reused.	Complied
	NOISE	
D1	Equipment including the Absorber Recirculation Pump, Oxidation Air Blower, Booster Fan and Booster Fan Motor of the FGD plants shall be acoustically insulated and the Gas-Gas Heater (untreated side) of the FGD plants shall be provided with reinforced lagging to reduce the noise impact.	Complied