

香港電燈有限公司
The Hongkong Electric Co., Ltd.



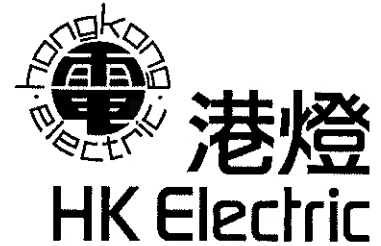
**Lamma Power Station
Units L2, L4 & L5 Flue Gas Desulphurization
Plants Retrofit**

Operational Phase

Quarterly Environmental Monitoring & Audit Report

April – June 2025

香港電燈有限公司
The Hongkong Electric Co., Ltd.



ENVIRONMENTAL IMPACT ASSESSMENT (EIA) ORDINANCE, CAP. 499

ENVIRONMENTAL PERMITS NO. EP-248/2006 & EP-287/2007

**LAMMA POWER STATION
UNITS L2, L4 & L5 FLUE GAS DESULPHURIZATION PLANTS RETROFIT**

**ENVIRONMENTAL MONITORING & AUDIT PROGRAMME
AT OPERATIONAL PHASE**


Report Title	Quarterly EM&A Report (April to June 2025)
Date	26 September 2025
Certified by	 (Mr. CHAN Hon Yeung, Environmental Team Leader)

TABLE OF CONTENT

EXECUTIVE SUMMARY

1.	INTRODUCTION.....	1
1.1	Background	1
1.2	Project Organisation	1
1.3	Plant Availability during the Reporting Period	2
1.4	Malfunction/Outage Records of Pollution Control Equipment	2
1.5	Summary of EM&A Requirements	2
2.	AIR QUALITY.....	10
2.1	Monitoring Requirements	10
2.2	Summary of Results and Observations	10
3.	WATER QUALITY.....	11
3.1	Monitoring Requirements	11
3.2	Summary of Results and Observations	11
4.	ENVIRONMENTAL AUDIT.....	12
4.1	Review of Environmental Monitoring Procedures	12
4.2	Assessment of Environmental Monitoring Results	12
4.3	Status of Environmental Licensing and Permitting	13
4.4	Implementation Status of Environmental Mitigation Measures	14
4.5	Implementation Status of Event/Action Plan	14
4.6	Implementation Status of Environmental Complaint Handling Procedures	14
5.	FUTURE KEY ISSUES.....	16
5.1	Outage Plan for the coming 3 months	16
5.2	Key issues for the coming 3 months	16
6.	CONCLUSION.....	17

LIST OF TABLES

Table 2.1	Air Quality Monitoring Parameters and Frequency
Table 3.1	Water Quality Monitoring Parameters and Frequencies
Table 4.1	Summary of Action/Limit Level Exceedances on Monitoring Parameters
Table 4.2	Amount of Gypsum and Sludge Collected for Reuse by Contractor
Table 4.3	Summary of Environmental Licensing and Permit Status
Table 4.4	Environmental Complaints Received
Table 4.5	Outstanding Environmental Complaints Carried Over

LIST OF FIGURES

Figure 1.1a	Location of New Facilities for L4 & L5 FGD Plant
Figure 1.1b	Location of New Facilities for L2 FGD Plant
Figure 1.2a	General Arrangement of L4 & L5 FGD Plant
Figure 1.2b	General Arrangement of L2 FGD Plant
Figure 1.3	Schematic Diagram of L2, L4 & L5 FGD Plant
Figure 1.4	Simplified Schematic Diagram of FGD Wastewater Treatment Plant
Figure 1.5	Organization Chart at Operational Phase

APPENDIX

Appendix A	Event/Action Plans in Response to Exceedance of AL Levels
Appendix B	Air Quality Monitoring Results
Appendix C	Summary Results on Water Quality Monitoring
Appendix D	Summary of EMIS

EXECUTIVE SUMMARY

This is the quarterly Environmental Monitoring and Audit (EM&A) report for the Projects “Lamma Power Station Units L4 & L5 Flue Gas Desulphurization Plant Retrofit” and “Lamma Power Station Unit L2 Flue Gas Desulphurization Plant Retrofit” prepared by the Environmental Team (ET). This report presents the results of impact monitoring on air and water quality and environmental audit for the operation of the said projects in the period from April to June 2025.

Environmental monitoring for air quality and water quality were carried out for the purpose of this EM&A program as well as for fulfilling the requirements stipulated in the relevant licences. The results were checked against the established Action/Limit (AL) levels. The implementation status of the environmental mitigation measures, Event/Action Plan and environmental complaint handling procedures were also checked.

Plant Availability

Unit L2 and Unit L4 were retired in October 2022 and January 2024 respectively. Unit L5 was retired in June 2024 and would be used for emergency generation if required.

Malfunction/Outage Records of Pollution Control Equipment

There were no major/minor outages of the Pollution Control Equipment during the reporting period.

Environmental Monitoring Works

Environmental monitoring works were performed during the operation of Units L2, L4 and L5 FGD Plants in the reporting period.

Air Quality

No exceedance of Action and Limit levels for air quality were recorded in the reporting period.

Water Quality

No exceedance of Action and Limit levels for water quality were recorded in the reporting period.

Environmental Licensing and Permitting

Description	Permit / Licence No.	Valid Period		Issued To	Date of Issuance
		From	To		
Environmental Permit for L4/5 FGD plants retrofit project	EP-248/2006	25/04/2006	-	HK Electric	25/04/2006
Environmental Permit for Unit L2 FGD plant retrofit project	EP-287/2007	02/10/2007	-	HK Electric	02/10/2007
Specified Process Licence issued under APCO	L-7-002(15)	01/01/2025	31/12/2026	HK Electric	18/11/2024
WPCO discharge licence for Ash Lagoon	WT00039618-2021	11/02/2022	31/12/2026	HK Electric	11/02/2022

Implementation Status of Environmental Mitigation Measures

Environmental mitigation measures were implemented in the reporting period.

Environmental Complaints / Feedback Cases

During the reporting period, there was no environmental complaint or feedback case regarding the operation of Lamma Power Station.

Future key issues

Key issues to be considered in the coming months include:

Air Impact

- To continuously carry out the air quality monitoring for Units L2, L4 and L5 (if emergency generation is required).

Water Impact

- To continuously carry out the water quality monitoring for FGD WWT plant.

Concluding Remarks

The environmental performance of the projects was generally satisfactory.

1. INTRODUCTION

The Environmental Team (hereinafter called the “ET”) was formed within The Hongkong Electric Co. Ltd (HK Electric) to undertake Environmental Monitoring and Audit for the “Operation of Lamma Power Station Units L4 & L5 Flue Gas Desulphurization Plant Retrofit Project” under the requirements of Clause 2.18 of Environmental Permit (EP) No. EP-248/2006 and “Operation of Lamma Power Station Unit L2 Flue Gas Desulphurization Plant Retrofit Project” under the requirements of Clause 2.10 of Environmental Permit (EP) No. EP-287/2007.

This report summarizes the environmental monitoring and audit work for the said Projects for the period from April to June 2025.

1.1 Background

The Projects involves retrofitting the three existing coal-fired generating Units L2, L4 and L5 of Lamma Power Station with Flue Gas Desulphurisation (FGD) plants for reducing sulphur dioxide emissions in support of Government policy to improve the air quality of the Pearl River Delta.

The Projects include the installation and operation of FGD plants with flue gas desulphurization efficiency of 90% for the three coal-fired Units L2, L4 & L5 to reduce the overall SO₂ emissions from Lamma Power Station. The process adopted for the FGD plants is “Wet Limestone-Gypsum”, a technology which has already been used in, and proved effective and reliable for the existing coal-fired units L6, L7 & L8. The flue gas from the boiler is directed to the FGD absorber inside which removal of SO₂ is take place by reaction with limestone slurry. After passing through the absorber, the treated flue gas is heated up by a gas-gas heater to over 80°C at boiler rated capacity and directed back to the existing chimney for discharge to the atmosphere. [Figure 1.1a](#), [Figure 1.1b](#), [Figure 1.2a](#), [Figure 1.2b](#) and [Figure 1.3](#) show the location and schematic of the FGD plants.

Wastewater filtrated from the reacted limestone slurry, i.e. gypsum slurry, is produced and it is directed to the existing FGD wastewater treatment plant (WWTP). The FGD WWTP is designed to treat the effluent from FGD plants by alkalization, precipitation and neutralization processes. The schematic diagram of the FGD WWTP is illustrated in [Figure 1.4](#).

The additional equipment for the FGD Plants retrofit projects for Units L2, L4 and L5 includes:

- Three sets of FGD absorbers and associated ductworks
- Three sets of booster fans
- Three sets of gas-gas heaters
- Two FGD Switchgear and Equipment Buildings
- Gypsum dewatering system comprising two sets of hydrocyclones and belt filters

1.2 Project Organisation

The management structure to oversee the Projects includes the following:

- Environmental Protection Department (The Authority);
- General Manager (Corporate Development) (The official contact person between HK Electric and EPD);
- Environmental Team Leader (ET Leader);

- Environmental Team (ET).

The organization chart for the Operation EM&A programme is shown in [Figure 1.5](#).

1.3 Plant Availability during the Reporting Period

Unit L2 and Unit L4 were retired in October 2022 and January 2024 respectively. Unit L5 was retired in June 2024 and would be used for emergency generation if required.

1.4 Malfunction/Outage Records of Pollution Control Equipment

There were no major/minor outages of the Pollution Control Equipment during the reporting period.

1.5 Summary of EM&A Requirements

Environmental Monitoring and Audit (EM&A) requirements have been discussed in the Environmental Impact Assessment (EIA) Report/ Project Profile for the Projects. The assessment results indicate that environmental monitoring works required for the EM&A programmes of these Projects are already in place or would be implemented under Lamma Power Station Extension Environmental Permit or environmental licenses for the operation of the existing Lamma Power Station. Such monitoring works are considered adequate for the Projects and no additional EM&A activities are required. Hence, environmental monitoring for air quality and water quality are carried out for the purpose of this EM&A program as well as for fulfilling the requirements stipulated in the relevant licences.

The EM&A monitoring work for air and water quality are described in [Section 2](#) and [Section 3](#) respectively.

The following environmental audits are summarized in [Section 4](#) of the report:

- Environmental monitoring results;
- The status of environmental licensing and permits for the Projects;
- The implementation status of environmental protection and pollution control / mitigation measures.

The future key issues for the Projects will be reported in [Section 5](#) of this report.

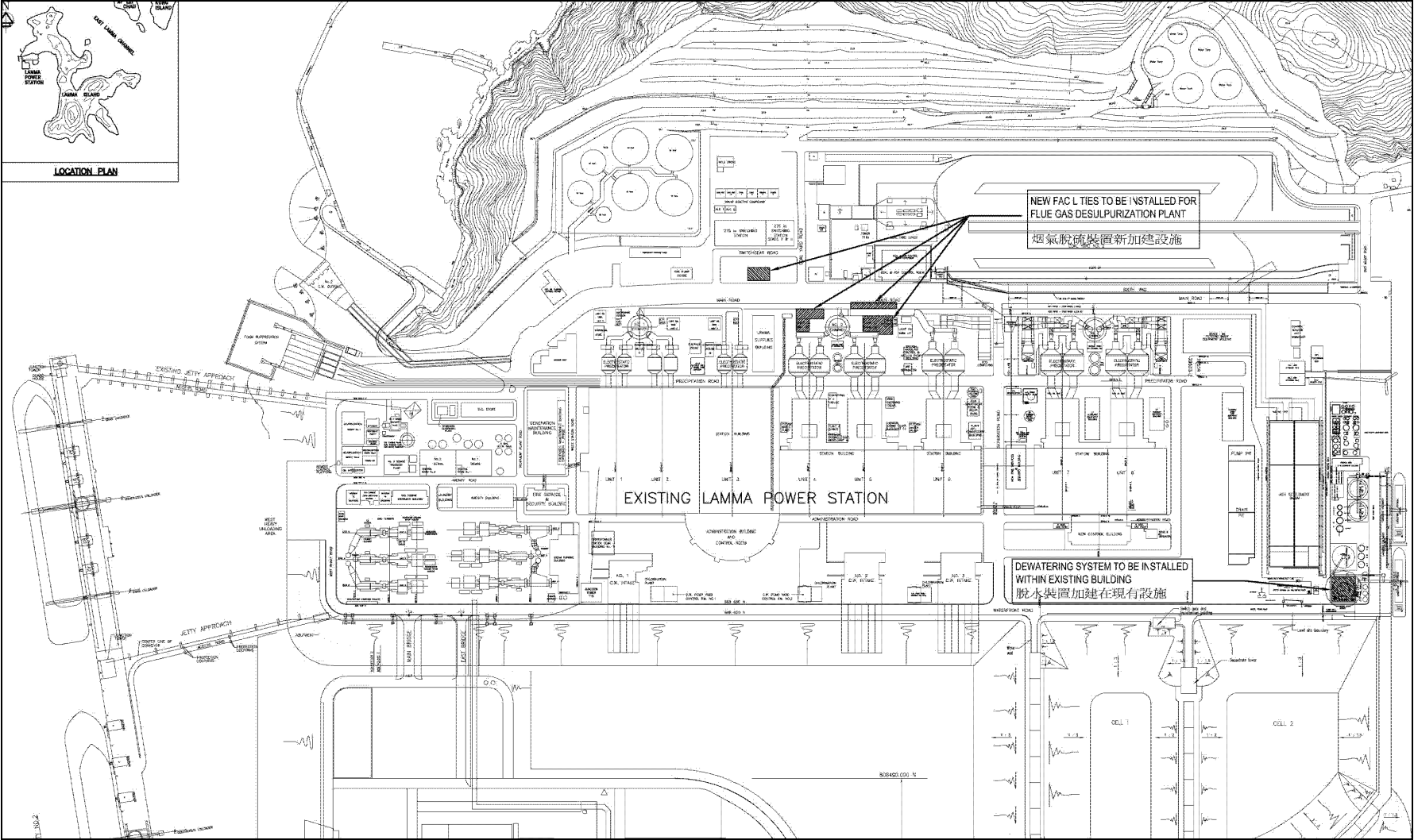


Figure 1.1a Location of New Facilities for L4 & L5 FGD Plants

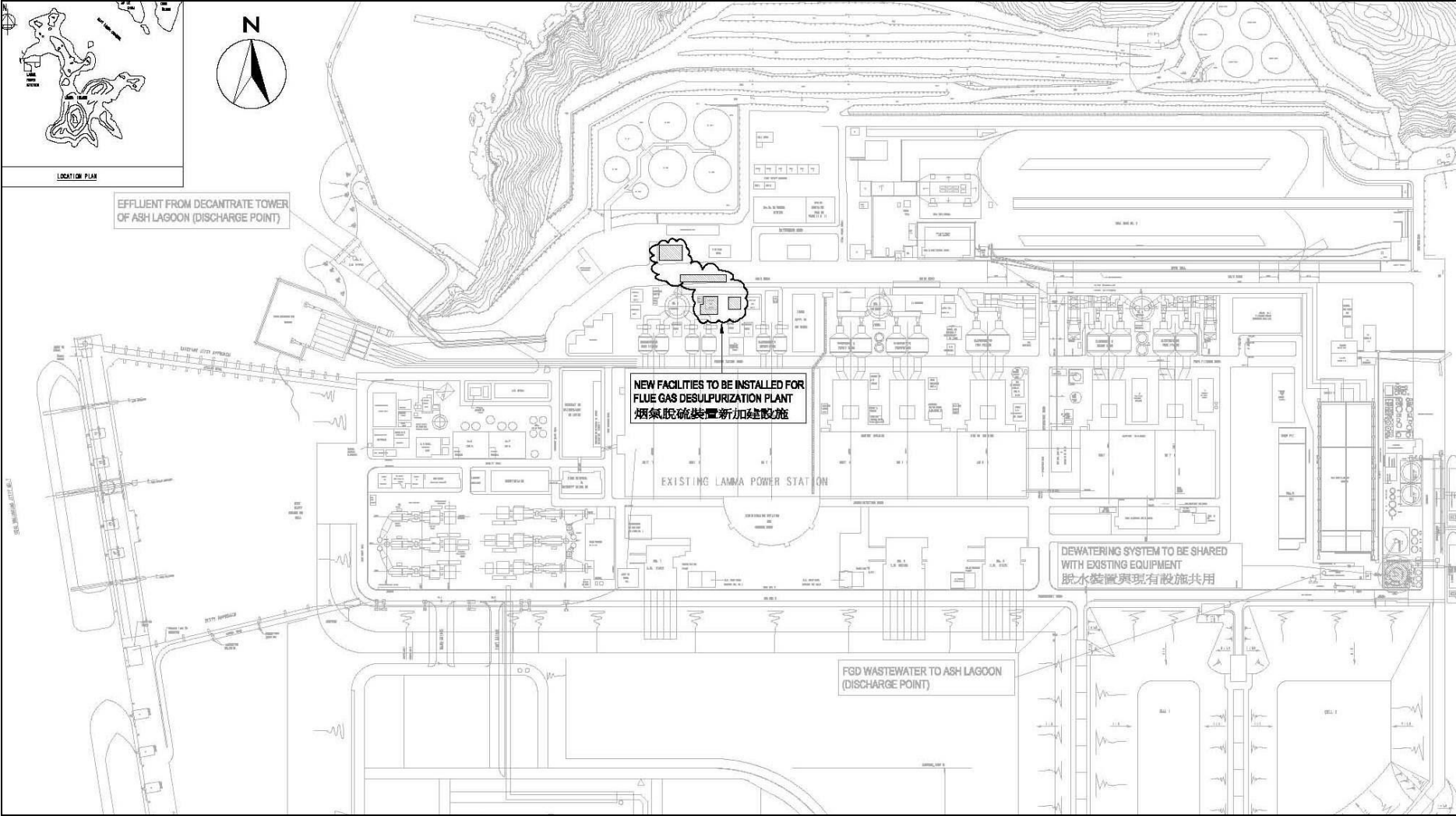


Figure 1.1b Location of New Facilities for L2 FGD Plant

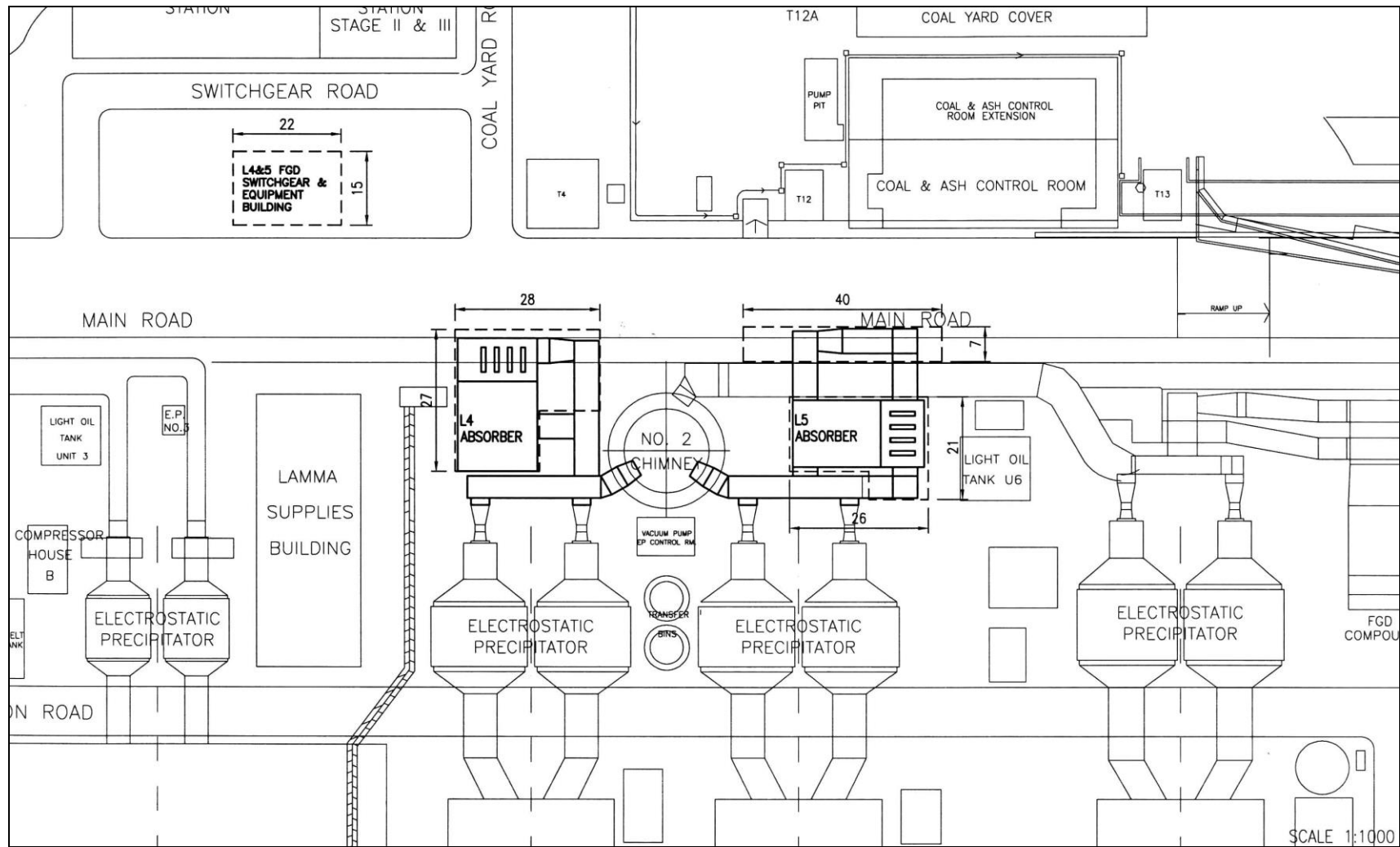


Figure 1.2a General Arrangement of L4 & L5 FGD Plants

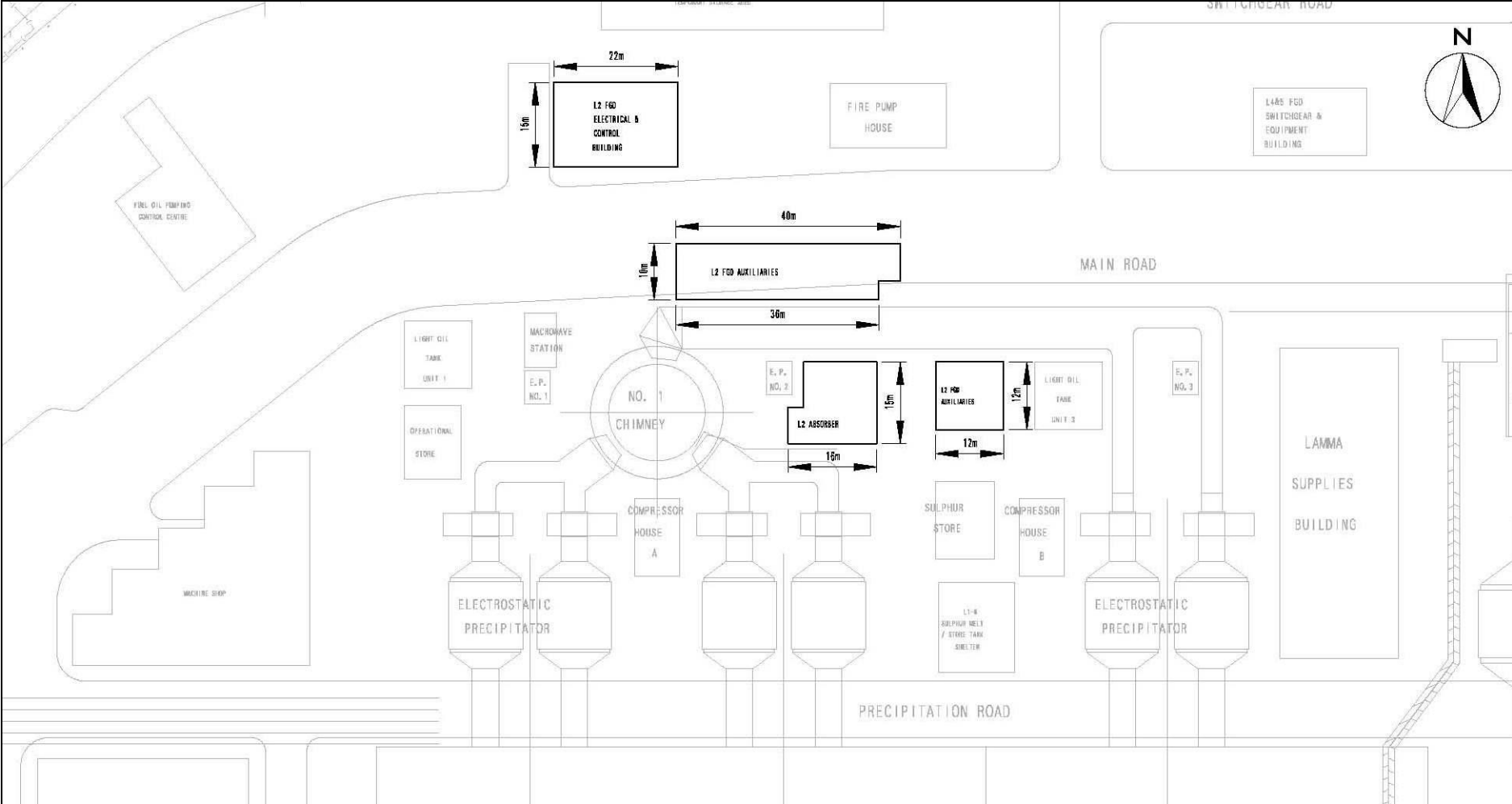


Figure 1.2b General Arrangement of L2 FGD Plant

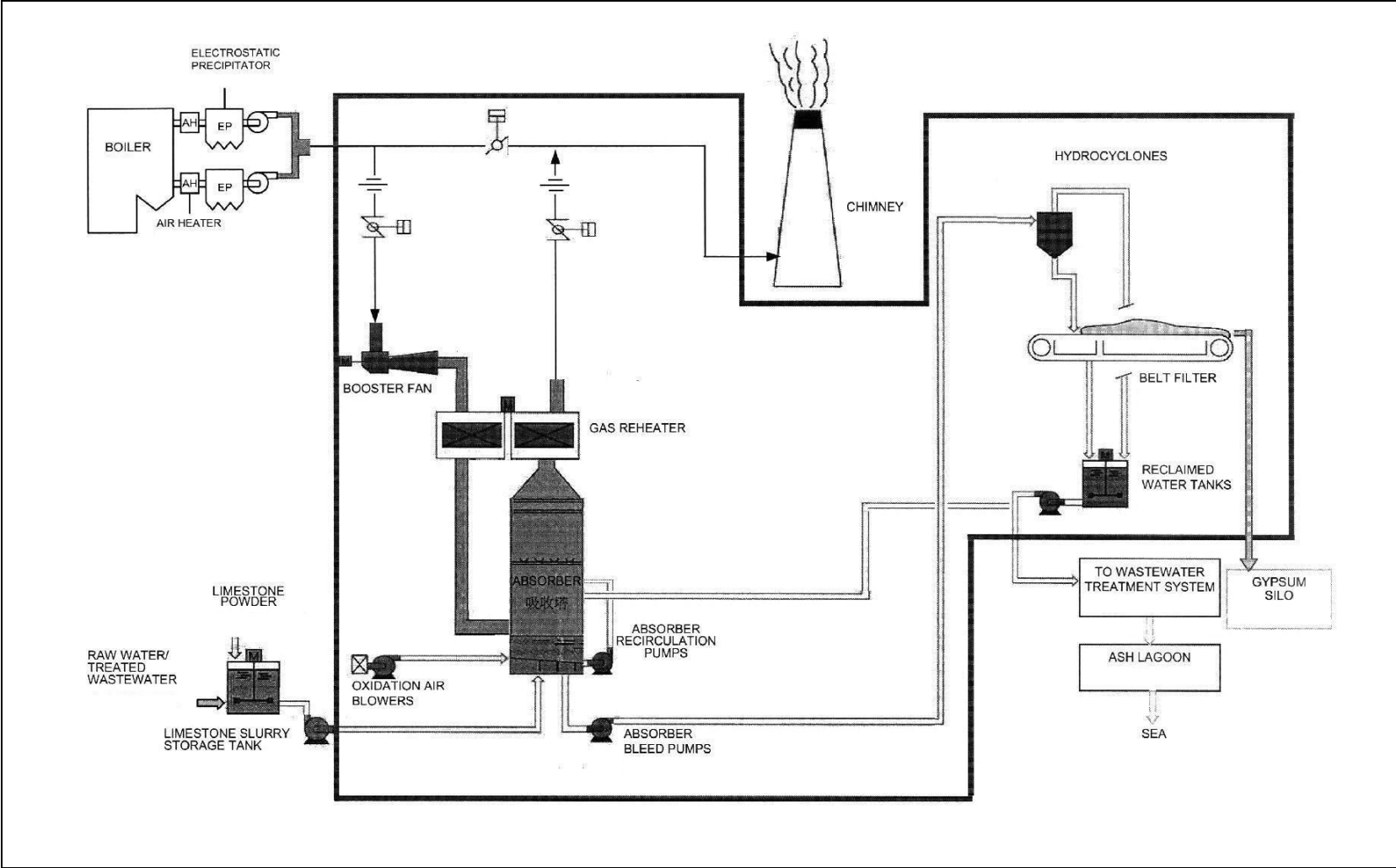


Figure 1.3 Schematic Diagram of the L2, L4 & L5 FGD Plant

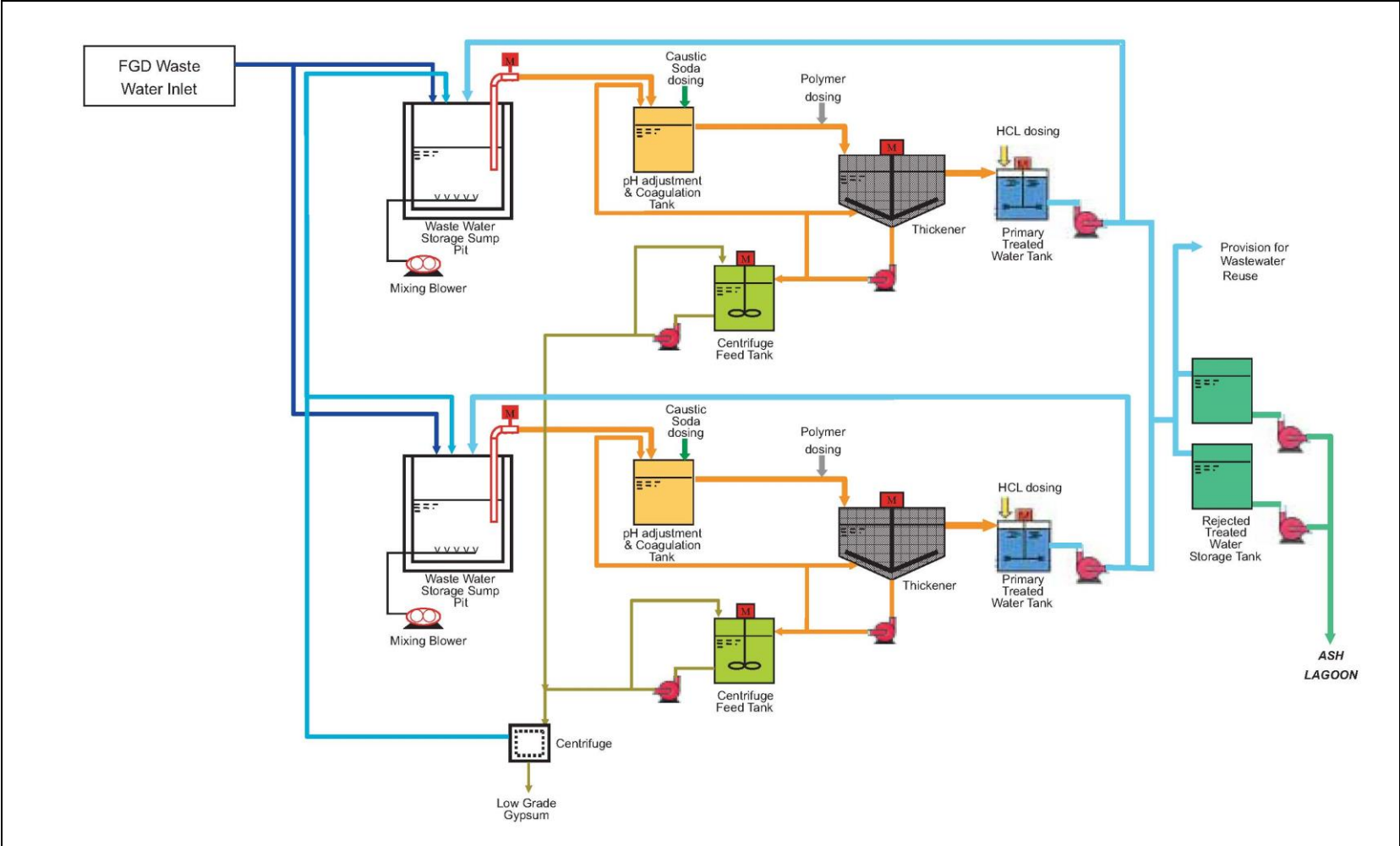


Figure 1.4 Simplified Schematic Diagram of FGD Wastewater Treatment Plant

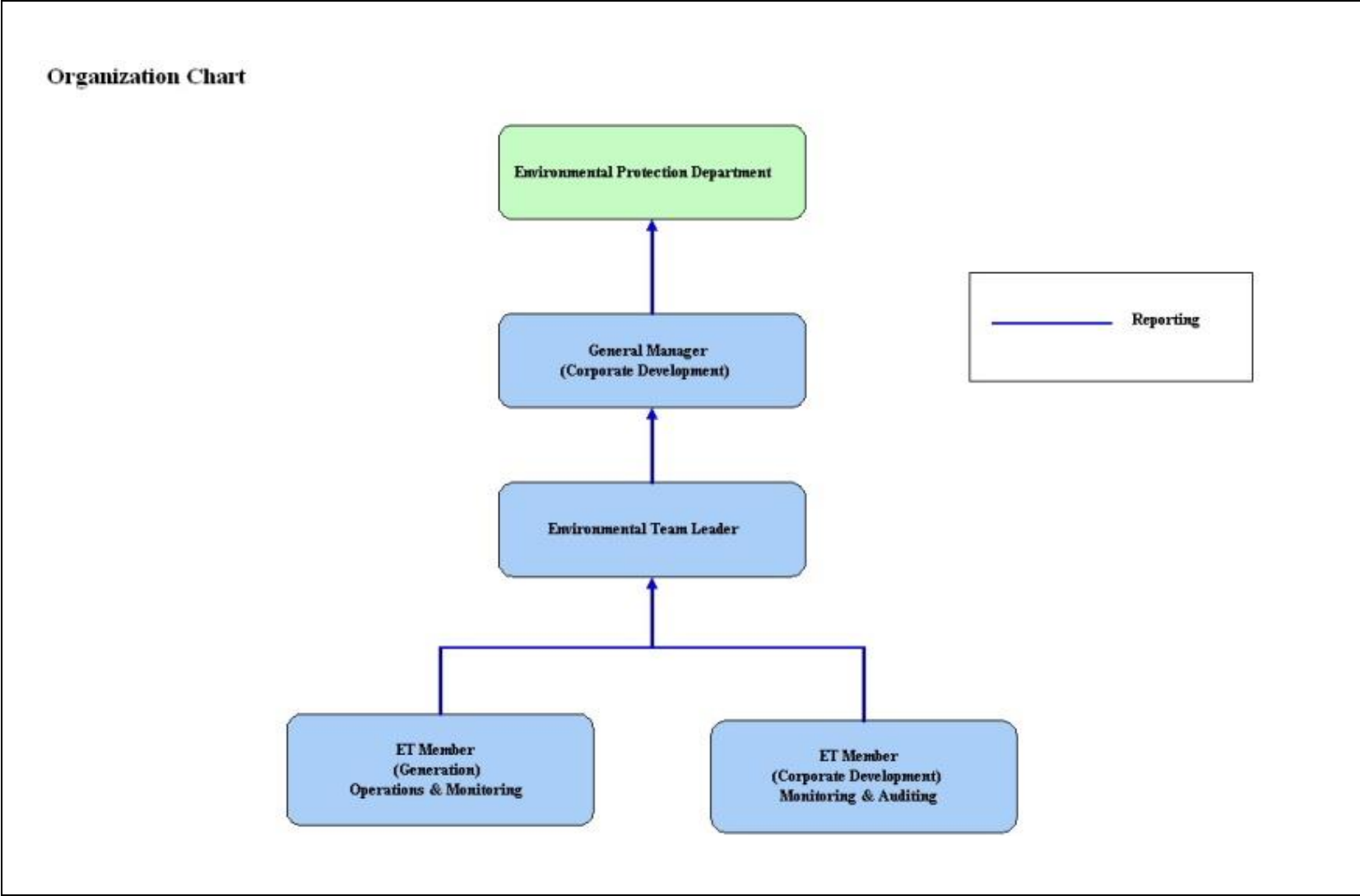


Figure 1.5 Organization Structure at Operational Phase of the Projects

2. AIR QUALITY

2.1 Monitoring Requirements

Since the Projects will bring a general air quality improvement, no additional EM&A activities are considered required, besides those already in place, such as those required by specified process licenses for the operation of the existing Lamma Power Station. Total Suspended Particulate (TSP) monitoring at East Gate and Reservoir area of Lamma Power Station is no longer required under the current SP Licence L-7-002(15). It is agreed with EPD that the results of continuous Respirable Suspended Particulate (RSP) monitoring at Lamma Power Station would be reported. In accordance with the requirements stipulated in the Specified Processes Licence issued under Air Pollution Control Ordinance, various operation parameters as stated in [Table 2.1](#) were monitored. Those parameters have to be checked against the Action/Limit Levels are shown in [Appendix A](#).

Table 2.1 Air Quality Monitoring Parameters and Frequency

Sources of Emission	Parameter	Frequency
Steam boilers L2, L4 & L5	Particulate	Once / year
	Particulate (Opacity)	Continuous
	SO ₂	Continuous
	NO _x expressed as NO ₂ (For L4 and L5 only)	Continuous
Fugitive Dust (Coal, PFA, Limestone, gypsum)	Respirable Suspended Particulate	Continuous
Chimney emissions	Ambient air	Continuous at existing ambient air monitoring stations
	SO ₂	
	NO ₂	

2.2 Summary of Results and Observations

Monitoring of various parameters as listed in [Table 2.1](#) above was conducted during the operation of Units L2, L4 and L5 in the reporting period. A summary of monitoring data is shown in [Appendix B](#).

No Action/Limit Level exceedance was recorded in the reporting period.

3. WATER QUALITY

3.1 Monitoring Requirements

According to the EIA Report/ Project Profile for the Projects, the current monitoring programme for the Lamma Power Station can cover the Projects and no additional EM&A measures are required besides those already in place. Hence, the EM&A work on water quality should strictly follow the relevant monitoring requirements stipulated in the discharge licence for Ash Lagoon issued under the Water Pollution Control Ordinance (WPCO).

Water quality monitoring was carried out for FGD Waste Water Treatment Plant (WWTP) in the reporting period. The parameters stated in [Table 3.1](#) were monitored and checked against the Action/Limit Levels as given in [Appendix A](#).

Table 3.1 Water Quality Monitoring Parameters and Frequencies

Item	Parameters	Frequencies
1	pH	Daily
2	Suspended Solids	Daily
3	Iron	Monthly
4	Barium	Monthly
5	Mercury	Monthly
6	Cadmium	Monthly
7	Cyanide	Monthly
8	Total Phosphorus	Monthly
9	Total Nitrogen	Monthly

3.2 Summary of Results and Observations

Monitoring of various parameters as listed in [Table 3.1](#) above was carried out during the discharge of the WWTP in the reporting period. A summary of the data is shown in [Appendix C](#).

The data recorded for the monitoring parameters were all below their corresponding Action/Limit Levels. No Action/Limit level exceedance was recorded in the reporting period. The effluent quality was generally satisfactory.

4. ENVIRONMENTAL AUDIT

4.1 Review of Environmental Monitoring Procedures

The environmental monitoring procedures were regularly reviewed by the Environmental Team. No modification to the existing monitoring procedures was recommended.

4.2 Assessment of Environmental Monitoring Results

Monitoring results for Air Quality and Water Quality

The environmental monitoring results for air quality and water quality are presented in [Sections 2 and 3](#) respectively are summarized in [Table 4.1](#).

Table 4.1 Summary of Action/Limit Level Exceedances on Monitoring Parameters

Item	Parameter Monitored	Monitoring Period	No. of Exceedances In		Event/Action Plan Implementation Status and Results
			Action Level	Limit Level	
Air					
1	Annual analysis of dust particulate emission rates at chimney stacks.	01/04/25-30/06/25	N.A.	0	No PM stack sampling tests were conducted in the reporting period.
2	Continuous monitoring of opacity, NOx, SO2 and CO2 in the flue gas at the chimney stacks	01/04/25-30/06/25	0	0	
3	Ambient SO2 & NOx monitoring at the Peak, Queen Mary Hospital, Victoria Road, Chung Hom Kok, Ap Lei Chau and Cheung Chau.	01/04/25-30/06/25	0	0	
Water					
1	pH in WWTP Effluent	01/04/25-30/06/25	0	0	
2	Suspended Solids in WWTP Effluent	01/04/25-30/06/25	0	0	

Item	Parameter Monitored	Monitoring Period	No. of Exceedances In		Event/Action Plan Implementation Status and Results
			Action Level	Limit Level	
3	Iron in WWTP Effluent	01/04/25-30/06/25	0	0	
4	Barium in WWTP Effluent	01/04/25-30/06/25	0	0	
5	Mercury in WWTP Effluent	01/04/25-30/06/25	0	0	
6	Cadmium in WWTP Effluent	01/04/25-30/06/25	0	0	
7	Cyanide in WWTP Effluent	01/04/25-30/06/25	0	0	
8	Total Phosphorus in WWTP Effluent	01/04/25-30/06/25	0	0	
9	Total Nitrogen in WWTP Effluent	01/04/25-30/06/25	0	0	

Waste Management Records

The quantity of FGD gypsum and sludge collected for reuse by contractor in the reporting period are shown in [Table 4.2](#).

Table 4.2 Amount of Gypsum and Sludge Collected for Reuse by Contractor

Period	Amount of Gypsum Collected	Amount of Sludge Collected
April 2025	2,259.58 MT	0 MT
May 2025	0 MT	0 MT
June 2025	3,746.90 MT	24.58 MT

4.3 Status of Environmental Licensing and Permitting

All permits/licenses obtained as of June 2025 are summarised in [Table 4.3](#).

Table 4.3 Summary of Environmental Licensing and Permit Status

Description	Permit / Licence No.	Valid Period		Status
		From	To	
Environmental Permit for Units L4/5 FGD Plants Retrofit	EP-248/2006	25/04/2006	-	Valid
Environmental Permit for Unit L2 FGD Plant Retrofit	EP-287/2007	02/10/2007	-	Valid
Specified Process Licence issued under APCO	L-7-002(15)	01/01/2025	31/12/2026	Valid
WPCO discharge licence for Ash Lagoon	WT00039618-2021	11/02/2022	31/12/2026	Valid

4.4 Implementation Status of Environmental Mitigation Measures

Mitigation measures detailed in the EIA Report and EP are required to be implemented. A summary of the Environmental Mitigation Implementation Schedule (EMIS) is presented in [Appendix D](#).

4.5 Implementation Status of Event/Action Plan

A list of specific actions in the event of exceedances of the various threshold levels for specific emission and discharge sources is given in [Appendix A](#).

As no Action/Limit level exceedance was recorded, no action has been devised.

4.6 Implementation Status of Environmental Complaint Handling Procedures

During the reporting period, there was no environmental complaint or feedback case regarding the operation of Lamma Power Station.

Table 4.4 Environmental Complaint(s) / Feedback Cases(s) Received

Case Reference / Date, Time Received / Date, Time Concerned	Descriptions / Actions Taken	Conclusion / Status
-	-	-

Table 4.5 Outstanding Environmental Complaint(s) / Feedback Case(s) Carried Over

Case Reference / Date, Time Received / Date, Time Concerned	Descriptions / Actions Taken	Conclusion / Status
-	-	-

5. FUTURE KEY ISSUES

5.1 Outage Plan for the coming 3 months

No major outage planned in the coming 3 months

5.2 Key issues for the coming 3 months

Key issues to be considered in the coming 3 months include:

Air Impact

- To continuously carry out the air quality monitoring for Units L2, L4 and L5 (if emergency generation is required).

Water Impact

- To continuously carry out the water quality monitoring for FGD Waste Water Treatment Plant.

6. CONCLUSION

Environmental monitoring was performed as required in the reporting period from April to June 2025. All monitoring results were checked and reviewed.

No Action/Limit level exceedance on air quality parameters were recorded in the reporting period.

No Action/Limit level exceedance on water quality parameters were recorded in the reporting period.

Environmental mitigation measures recommended in the EIA Report and EP were implemented in the reporting period.

During the reporting period, there was no environmental complaint or feedback case regarding the operation of Lamma Power Station.

No prosecution was received for the Projects in the reporting period.

The environmental performance of the Projects was generally satisfactory.

Appendix A Event/Action Plans in Response to Exceedance of AL Levels

A.1 Air

Source of Emissions	Parameters to be Monitored	Frequency	Concentration Not to Be Exceeded	Action	Limit	Proposed Action
Steam boilers L2, L4 and L5	Particulate	once/year	50 mg/Nm3	-	50	ET Leader informs Generation Division at action level. Maintenance initiated. Temporary load shift until pollution control equipment repaired and reinstated. Report to EPD.
	Particulate (Opacity)	continuous	40% (bihourly)	35	40	
	SO2	continuous	200 mg/Nm3 (1h)	190	200	
	NOx expressed as NO2 (For L4 and L5 only)	continuous	615 mg/Nm3 (1h)	585	615	
Chimney emissions	Ambient air SO2	Continuous at existing ambient air monitoring stations	800 (µg/m3) (1h)	-	800	ET to review data on post-hoc basis and check for possible power station contribution.
	NO2		300 (µg/m3) (1h)	-	300	

A.2 Water

Source of Discharges	Parameters to be Monitored	Frequency	Concentration Not to Be Exceeded	Action	Limit	Proposed Action
FGD Wastewater Treatment Plant	pH	Daily	6-9	-	6-9	If pH exceeds limit level, consideration to be given to adjust chemical dosing. ET Leader inform Generation Division and investigation be initiated to identify and remedy cause. For all other parameters except pH, Generation Division to be informed, frequency of monitoring to be increased, and investigations to be initiated to identify cause and remedy if concentration exceeds action level. If problem persists to exceed the limit level, ET Leader verbally informs EPD and ensures remedial actions implemented.
	Suspended Solids	Daily	30 mg/L	25	30	
	Iron	Monthly	4 mg/L	3.6	4	
	Barium	Monthly	1.5 mg/L	1.3	1.5	
	Mercury	Monthly	0.005 mg/L	0.0045	0.005	
	Cadmium	Monthly	0.005 mg/L	0.0045	0.005	
	Cyanide	Monthly	0.1 mg/L	0.09	0.1	
	Total Phosphorus	Monthly	8 mg/L	7.2	8	
	Total Nitrogen	Monthly	400 mg/L	360	400	

Appendix B

Air Quality Monitoring Results

B.1 Ambient Respirable Suspended Particulate Monitoring at Lamma Power Station

Date: Second Quarter of 2025 (April – June)

Date	RSP concentration ($\mu\text{g}/\text{m}^3$)	
	Reservoir	East Gate
01/4/2025	23	31
02/4/2025	22	27
03/4/2025	25	36
04/4/2025	47	45
05/4/2025	30	41
06/4/2025	36	40
07/4/2025	50	55
08/4/2025	54	54
09/4/2025	47	34
10/4/2025	30	22
11/4/2025	27	11
12/4/2025	28	23
13/4/2025	265	270
14/4/2025	310	313
15/4/2025	229	227
16/4/2025	162	120
17/4/2025	73	73
18/4/2025	77	56
19/4/2025	37	27
20/4/2025	20	16
21/4/2025	29	17
22/4/2025	29	20
23/4/2025	52	22
24/4/2025	22	20
25/4/2025	15	19
26/4/2025	19	15
27/4/2025	25	24
28/4/2025	24	26
29/4/2025	22	36
30/4/2025	51	41

Date	RSP concentration ($\mu\text{g}/\text{m}^3$)	
	Reservoir	East Gate
01/5/2025	52	24
02/5/2025	48	47
03/5/2025	40	35
04/5/2025	18	22
05/5/2025	26	21
06/5/2025	30	18
07/5/2025	13	16
08/5/2025	61	46
09/5/2025	25	22
10/5/2025	46	40
11/5/2025	29	30
12/5/2025	32	31
13/5/2025	36	36
14/5/2025	29	23
15/5/2025	27	16
16/5/2025	25	10
17/5/2025	20	10
18/5/2025	22	12
19/5/2025	31	10
20/5/2025	29	12
21/5/2025	16	11
22/5/2025	21	10
23/5/2025	22	24
24/5/2025	23	19
25/5/2025	27	39
26/5/2025	33	33
27/5/2025	37	35
28/5/2025	34	26
29/5/2025	16	13
30/5/2025	24	10
31/5/2025	42	30

Date	RSP concentration ($\mu\text{g}/\text{m}^3$)	
	Reservoir	East Gate
01/6/2025	51	34
02/6/2025	53	22
03/6/2025	48	25
04/6/2025	11	16
05/6/2025	19	21
06/6/2025	26	23
07/6/2025	53	21
08/6/2025	20	15
09/6/2025	21	16
10/6/2025	20	16
11/6/2025	20	18
12/6/2025	26	23
13/6/2025	34	32
14/6/2025	46	46
15/6/2025	49	45
16/6/2025	34	37
17/6/2025	21	32
18/6/2025	23	28
19/6/2025	24	19
20/6/2025	25	21
21/6/2025	29	21
22/6/2025	22	23
23/6/2025	22	20
24/6/2025	22	16
25/6/2025	18	21
26/6/2025	32	24
27/6/2025	29	24
28/6/2025	24	18
29/6/2025	28	22
30/6/2025	33	20

B.2 Unit L2, L4 and L5 Stack Monitoring at Lamma Power Station

B.2.1 Monthly Summary of Stack NOx and SO2 for Unit L5

Date	Daily Maximum		
	SO2 concentration (mg/Nm3) #	NOx concentration (mg/Nm3) #	Opacity (%)
01/04/2025	*	*	*
02/04/2025	*	*	*
03/04/2025	*	*	*
04/04/2025	*	*	*
05/04/2025	31	159	78
06/04/2025	*	*	*
07/04/2025	*	*	*
08/04/2025	*	*	*
09/04/2025	*	*	*
10/04/2025	*	*	*
11/04/2025	*	*	*
12/04/2025	*	*	*
13/04/2025	*	*	*
14/04/2025	*	*	*
15/04/2025	*	*	*
16/04/2025	*	*	*
17/04/2025	*	*	*
18/04/2025	*	*	*
19/04/2025	*	*	*
20/04/2025	*	*	*
21/04/2025	*	*	*
22/04/2025	*	*	*
23/04/2025	*	*	*
24/04/2025	*	*	*
25/04/2025	*	*	*
26/04/2025	*	*	*
27/04/2025	*	*	*
28/04/2025	*	*	*
29/04/2025	*	*	*
30/04/2025	*	*	*

Date	Daily Maximum		
	SO2 concentration (mg/Nm3) [#]	NOx concentration (mg/Nm3) [#]	Opacity (%)
01/05/2025	*	*	*
02/05/2025	*	*	*
03/05/2025	*	*	*
04/05/2025	*	*	*
05/05/2025	*	*	*
06/05/2025	*	*	*
07/05/2025	31	335	13
08/05/2025	31	275	14
09/05/2025	*	*	*
10/05/2025	*	*	*
11/05/2025	*	*	*
12/05/2025	*	*	*
13/05/2025	*	*	*
14/05/2025	*	*	*
15/05/2025	*	*	*
16/05/2025	*	*	*
17/05/2025	36	287	13
18/05/2025	*	*	*
19/05/2025	*	*	*
20/05/2025	*	*	*
21/05/2025	*	*	*
22/05/2025	*	*	*
23/05/2025	*	*	*
24/05/2025	*	*	*
25/05/2025	*	*	*
26/05/2025	*	*	*
27/05/2025	*	*	*
28/05/2025	*	*	*
29/05/2025	*	*	*
30/05/2025	*	*	*
31/05/2025	*	*	*

	Daily Maximum		
	SO2 concentration (mg/Nm3) [#]	NOx concentration (mg/Nm3) [#]	Opacity (%)
01/06/2025	*	*	*
02/06/2025	*	*	*
03/06/2025	*	*	*
04/06/2025	*	*	*
05/06/2025	*	*	*
06/06/2025	*	*	*
07/06/2025	*	*	*
08/06/2025	*	*	*
09/06/2025	*	*	*
10/06/2025	*	*	*
11/06/2025	*	*	*
12/06/2025	*	*	*
13/06/2025	*	*	*
14/06/2025	*	*	*
15/06/2025	*	*	*
16/06/2025	*	*	*
17/06/2025	*	*	*
18/06/2025	*	*	*
19/06/2025	*	*	*
20/06/2025	*	*	*
21/06/2025	*	*	*
22/06/2025	*	*	*
23/06/2025	*	*	*
24/06/2025	*	*	*
25/06/2025	*	*	*
26/06/2025	*	*	*
27/06/2025	*	*	*
28/06/2025	*	*	*
29/06/2025	*	*	*
30/06/2025	*	*	*

Note: # - Hourly average value. Expressed as at 0°C, 101.325kPa, dry and corrected to 12% CO₂ condition.

* - Unit L5 was not on load

^ - Proof-run of L5 was conducted

B.2.2 Monthly Summary of Stack NOx and SO2 for Unit L4

Date	Daily Maximum		
	SO2 concentration (mg/Nm3) #	NOx concentration (mg/Nm3) #	Opacity (%)
01/04/2025	*	*	*
02/04/2025	*	*	*
03/04/2025	*	*	*
04/04/2025	*	*	*
05/04/2025	*	*	*
06/04/2025	*	*	*
07/04/2025	*	*	*
08/04/2025	*	*	*
09/04/2025	*	*	*
10/04/2025	*	*	*
11/04/2025	*	*	*
12/04/2025	*	*	*
13/04/2025	*	*	*
14/04/2025	*	*	*
15/04/2025	*	*	*
16/04/2025	*	*	*
17/04/2025	*	*	*
18/04/2025	*	*	*
19/04/2025	*	*	*
20/04/2025	*	*	*
21/04/2025	*	*	*
22/04/2025	*	*	*
23/04/2025	*	*	*
24/04/2025	*	*	*
25/04/2025	*	*	*
26/04/2025	*	*	*
27/04/2025	*	*	*
28/04/2025	*	*	*
29/04/2025	*	*	*
30/04/2025	*	*	*

Date	Daily Maximum		
	SO2 concentration (mg/Nm3) [#]	NOx concentration (mg/Nm3) [#]	Opacity (%)
01/05/2025	*	*	*
02/05/2025	*	*	*
03/05/2025	*	*	*
04/05/2025	*	*	*
05/05/2025	*	*	*
06/05/2025	*	*	*
07/05/2025	*	*	*
08/05/2025	*	*	*
09/05/2025	*	*	*
10/05/2025	*	*	*
11/05/2025	*	*	*
12/05/2025	*	*	*
13/05/2025	*	*	*
14/05/2025	*	*	*
15/05/2025	*	*	*
16/05/2025	*	*	*
17/05/2025	*	*	*
18/05/2025	*	*	*
19/05/2025	*	*	*
20/05/2025	*	*	*
21/05/2025	*	*	*
22/05/2025	*	*	*
23/05/2025	*	*	*
24/05/2025	*	*	*
25/05/2025	*	*	*
26/05/2025	*	*	*
27/05/2025	*	*	*
28/05/2025	*	*	*
29/05/2025	*	*	*
30/05/2025	*	*	*
31/05/2025	*	*	*

Date	Daily Maximum		
	SO2 concentration (mg/Nm3) [#]	NOx concentration (mg/Nm3) [#]	Opacity (%)
01/06/2025	*	*	*
02/06/2025	*	*	*
03/06/2025	*	*	*
04/06/2025	*	*	*
05/06/2025	*	*	*
06/06/2025	*	*	*
07/06/2025	*	*	*
08/06/2025	*	*	*
09/06/2025	*	*	*
10/06/2025	*	*	*
11/06/2025	*	*	*
12/06/2025	*	*	*
13/06/2025	*	*	*
14/06/2025	*	*	*
15/06/2025	*	*	*
16/06/2025	*	*	*
17/06/2025	*	*	*
18/06/2025	*	*	*
19/06/2025	*	*	*
20/06/2025	*	*	*
21/06/2025	*	*	*
22/06/2025	*	*	*
23/06/2025	*	*	*
24/06/2025	*	*	*
25/06/2025	*	*	*
26/06/2025	*	*	*
27/06/2025	*	*	*
28/06/2025	*	*	*
29/06/2025	*	*	*
30/06/2025	*	*	*

Note: # - Hourly average value. Expressed as at 0°C, 101.325kPa, dry and corrected to 12% CO₂ condition.

* - Unit L4 was not on load.

B.2.3 Monthly Summary of Stack SO2 for Unit L2

Date	Daily Maximum	
	SO2 concentration (mg/Nm3) [#]	Opacity (%)
01/04/2025	*	*
02/04/2025	*	*
03/04/2025	*	*
04/04/2025	*	*
05/04/2025	*	*
06/04/2025	*	*
07/04/2025	*	*
08/04/2025	*	*
09/04/2025	*	*
10/04/2025	*	*
11/04/2025	*	*
12/04/2025	*	*
13/04/2025	*	*
14/04/2025	*	*
15/04/2025	*	*
16/04/2025	*	*
17/04/2025	*	*
18/04/2025	*	*
19/04/2025	*	*
20/04/2025	*	*
21/04/2025	*	*
22/04/2025	*	*
23/04/2025	*	*
24/04/2025	*	*
25/04/2025	*	*
26/04/2025	*	*
27/04/2025	*	*
28/04/2025	*	*
29/04/2025	*	*
30/04/2025	*	*

Date	Daily Maximum	
	SO2 concentration (mg/Nm3) [#]	Opacity (%)
01/05/2025	*	*
02/05/2025	*	*
03/05/2025	*	*
04/05/2025	*	*
05/05/2025	*	*
06/05/2025	*	*
07/05/2025	*	*
08/05/2025	*	*
09/05/2025	*	*
10/05/2025	*	*
11/05/2025	*	*
12/05/2025	*	*
13/05/2025	*	*
14/05/2025	*	*
15/05/2025	*	*
16/05/2025	*	*
17/05/2025	*	*
18/05/2025	*	*
19/05/2025	*	*
20/05/2025	*	*
21/05/2025	*	*
22/05/2025	*	*
23/05/2025	*	*
24/05/2025	*	*
25/05/2025	*	*
26/05/2025	*	*
27/05/2025	*	*
28/05/2025	*	*
29/05/2025	*	*
30/05/2025	*	*
31/05/2025	*	*

Date	Daily Maximum	
	SO2 concentration (mg/Nm3) [#]	Opacity (%)
01/06/2025	*	*
02/06/2025	*	*
03/06/2025	*	*
04/06/2025	*	*
05/06/2025	*	*
06/06/2025	*	*
07/06/2025	*	*
08/06/2025	*	*
09/06/2025	*	*
10/06/2025	*	*
11/06/2025	*	*
12/06/2025	*	*
13/06/2025	*	*
14/06/2025	*	*
15/06/2025	*	*
16/06/2025	*	*
17/06/2025	*	*
18/06/2025	*	*
19/06/2025	*	*
20/06/2025	*	*
21/06/2025	*	*
22/06/2025	*	*
23/06/2025	*	*
24/06/2025	*	*
25/06/2025	*	*
26/06/2025	*	*
27/06/2025	*	*
28/06/2025	*	*
29/06/2025	*	*
30/06/2025	*	*

Note: # - Hourly average value. Expressed as at 0°C, 101.325kPa, dry and corrected to 12% CO₂ condition.

* - Unit L2 was not on load.

B.2.4 Summary of Annual Stack Particulate Sampling

No stack particulate sampling was conducted for Unit L5 in the period April to June 2025. Unit L2, Unit L4 and Unit L5 were retired in October 2022, January 2024 and June 2024 respectively.

B.3 Ambient SO₂ and NO₂ monitoring Data at Southern District and Cheung Chau

THE HONGKONG ELECTRIC COMPANY, LTD.
AIR QUALITY DATA MONTHLY TIME SERIES REPORT
MONTH: APRIL

STATION : VICTORIA PEAK
POLLUTANT : SULPHUR DIOXIDE

YEAR : 2025
UNIT : MICROGRAMS/CUBIC METER

DAY	1	2	3	4	5	6	7	8	9	10	11	12	13	14	15	16	17	18	19	20	21	22	23	24	MEAN
1	17	17	17	18	18	18	18	18	18	18	17	18	19	18	19	20	20	20	19	19	18	18	18	18	18
2	18	18	18	18	18	18	18	18	18	18	18	18	19	19	19	19	19	19	19	18	18	18	19	18	18
3	18	18	18	18	18	19	18	19	19	19	19	20	21	22	20	20	20	20	20	20	20	20	20	19	19
4	19	20	20	20	20	20	20	20	20	20	20	20	20	21	21	21	21	21	21	21	20	20	19	20	20
5	20	20	20	20	20	20	20	19	20	20	20	20	20	20	20	20	21	21	20	20	20	20	19	20	20
6	20	20	21	20	20	20	21	20	20	20	21	20	20	21	21	22	22	22	21	21	21	20	20	20	21
7	21	21	21	21	21	21	21	21	21	21	21	21	22	22	21	22	22	22	22	21	21	21	21	21	21
8	20	21	21	21	21	20	20	20	20	21	20	21	21	22	22	23	29	21	16	17	17	19	20	21	21
9	21	21	22	22	22	22	22	21	22	24	24	23	24	24	25	25	25	24	24	25	25	25	25	25	23
10	M	M	M	M	M	M	M	M	M	M	M	M	M	M	M	M	M	M	M	M	M	M	M	M	M
11	M	M	M	M	M	M	M	M	M	M	M	M	M	M	M	M	M	M	M	M	M	M	M	M	M
12	M	M	M	M	M	M	M	M	M	M	M	M	M	M	M	M	M	M	M	M	M	M	M	M	M
13	M	M	M	M	M	M	M	M	M	M	M	M	M	M	M	M	M	M	M	M	M	M	M	M	M
14	M	M	M	M	M	M	M	M	M	M	M	M	M	M	M	M	M	M	M	M	M	M	M	M	M
15	M	M	M	M	M	M	M	M	M	M	M	M	M	M	M	M	M	M	M	M	M	M	M	M	M
16	M	M	M	M	M	M	M	M	M	M	M	M	M	M	M	M	M	M	M	M	M	M	M	M	M
17	6	6	6	7	8	7	7	7	8	8	8	8	8	9	11	9	10	10	11	11	12	12	11	13	9
18	12	13	14	14	14	14	15	14	14	15	14	14	14	16	16	16	16	17	16	16	16	15	15	17	15
19	14	15	15	16	16	16	16	15	15	15	14	15	16	16	16	17	16	16	17	17	16	17	17	17	16
20	16	16	16	17	17	17	15	17	16	16	15	17	17	17	17	17	19	18	18	19	M	M	M	M	17
21	M	M	M	M	M	M	M	M	M	M	M	M	M	M	M	M	M	M	M	M	M	M	M	M	M
22	M	M	M	M	M	M	M	M	M	M	M	M	M	M	M	M	M	M	M	M	M	M	M	M	M
23	2	3	2	2	2	2	2	2	2	2	2	M	3	2	2	2	2	2	2	2	2	2	2	2	2
24	2	2	2	2	2	2	2	2	2	2	2	2	2	2	2	2	2	2	2	2	2	2	2	2	2
25	1	1	1	1	1	1	1	1	1	1	1	1	1	1	1	1	1	1	1	1	1	1	1	1	1
26	1	1	1	1	1	1	0	1	0	1	1	1	0	0	1	1	1	1	1	1	1	1	1	1	1
27	0	0	0	0	0	0	0	1	0	0	0	0	0	0	0	0	1	1	1	0	0	0	0	0	0
28	0	0	1	0	0	0	0	0	0	0	1	0	1	1	1	1	1	1	1	1	1	1	1	1	1
29	1	1	1	0	0	0	1	1	1	1	1	1	1	1	1	1	1	1	1	1	1	1	1	1	1
30	0	0	0	0	0	0	0	0	0	0	0	1	0	0	1	1	1	0	0	0	0	0	0	0	0

MONTHLY STATISTICS:

ARITH-----PERCENTILES-----													RANGE-----		STN GEOM	PERCENT	NO. OF TIMES
MEAN	MEDIAN	MEAN	50	90	95	98	99	1-HR	24-HR	DEVIATION	VALID DATA	ABOVE	LIMIT	LEVEL			
8	16	11	16	21	22	24	25	0	-	29	0	-	23	3	71	0	

- NOTES: 1. FLAGS FOR INVALID DATA :
- D: DYNAMIC CALIBRATION
 - T: TELEMETRY/DATALOGGR FAULT
 - M: MAINTENANCE OR ANALYZER FAULT
 - P: POWER FAILURE

THE HONGKONG ELECTRIC COMPANY, LTD.
AIR QUALITY DATA MONTHLY TIME SERIES REPORT
MONTH: APRIL

STATION : VICTORIA PEAK
POLLUTANT : NITROGEN DIOXIDE

YEAR : 2025
UNIT : MICROGRAMS/CUBIC METER

DAY	1	2	3	4	5	6	7	8	9	10	11	12	13	14	15	16	17	18	19	20	21	22	23	24	MEAN
1	5	3	4	3	3	4	5	9	8	9	10	9	10	10	14	16	19	21	21	12	9	6	6	5	9
2	4	3	2	3	1	1	2	4	8	9	5	5	7	5	5	5	4	3	2	1	1	1	0	2	3
3	4	2	2	1	1	1	2	6	8	13	10	7	10	5	5	7	3	3	1	1	1	2	4	4	4
4	2	1	1	1	1	2	2	3	3	2	3	5	5	6	5	4	4	8	5	2	3	3	3	3	3
5	2	2	2	3	5	3	3	6	12	21	23	44	32	24	21	24	26	27	18	17	14	10	5	10	15
6	7	6	6	5	8	12	10	7	14	15	13	13	17	34	39	44	42	10	15	6	4	2	3	2	14
7	2	2	2	2	2	2	3	5	6	8	5	6	8	8	7	8	12	11	6	4	4	4	3	2	5
8	3	2	1	0	0	0	2	2	8	24	26	38	40	25	19	16	22	23	15	7	4	5	3	4	12
9	1	M	0	11	13	6	11	8	12	12	6	9	13	10	9	15	21	22	29	16	10	10	4	2	11
10	3	1	7	27	19	14	2	9	20	17	17	19	8	6	21	24	17	5	28	17	9	35	19	5	15
11	35	41	17	52	2	0	3	9	14	9	9	9	5	6	6	10	8	11	9	6	5	8	7	5	12
12	6	5	4	2	2	2	4	4	7	12	15	13	13	15	7	4	7	10	18	10	9	8	8	8	8
13	7	6	4	2	2	1	2	2	2	3	5	2	4	5	10	8	17	25	25	22	18	12	15	17	9
14	9	18	35	37	35	24	13	9	7	12	17	23	21	24	39	38	40	41	39	22	14	13	12	10	23
15	9	7	7	6	5	4	6	9	22	19	23	19	14	10	11	7	5	6	9	2	1	1	2	3	9
16	4	3	2	2	2	3	6	6	14	11	7	4	3	4	3	6	10	11	10	4	3	1	1	1	5
17	1	0	1	0	0	0	1	3	5	7	5	4	5	5	6	6	7	8	5	5	5	5	4	4	4
18	3	1	0	0	0	2	4	6	7	15	11	10	8	5	7	7	11	6	10	9	8	10	6	4	6
19	4	5	4	5	2	7	4	5	5	7	4	5	6	3	2	6	4	7	7	4	5	5	4	5	5
20	3	5	1	1	1	1	4	7	7	5	5	8	7	9	15	6	9	8	9	6	7	4	5	8	6
21	8	7	4	2	3	2	2	3	3	4	5	5	4	6	8	9	8	7	7	6	3	1	1	3	5
22	6	3	4	8	5	13	15	7	11	9	8	11	8	9	16	12	9	11	4	3	4	4	3	7	8
23	7	M	6	5	3	7	7	5	6	5	7	M	3	2	6	10	5	15	14	12	6	6	4	5	7
24	6	5	2	5	0	1	1	3	4	5	5	6	2	4	4	8	8	7	5	5	4	6	9	7	5
25	6	3	1	8	4	2	1	4	4	24	9	6	26	9	6	9	10	13	13	8	6	10	5	4	8
26	3	2	1	1	1	1	1	2	6	11	12	9	8	8	9	12	8	6	5	2	3	4	3	2	5
27	1	1	1	1	1	1	1	2	2	2	2	3	5	3	6	7	10	11	7	6	6	2	6	2	4
28	1	0	1	9	6	1	3	5	5	4	25	8	36	30	23	44	43	42	30	50	22	33	25	20	19
29	14	6	3	2	1	2	3	6	9	13	9	8	7	4	6	5	5	3	4	4	4	4	5	6	6
30	8	3	3	2	1	2	4	6	10	21	22	17	9	8	7	10	10	10	4	6	2	3	4	4	7

MONTHLY STATISTICS:

GEOM	ARITH-----PERCENTILES-----							-----RANGE-----					STN GEOM	PERCENT	NO. OF TIMES		
MEAN	MEDIAN	MEAN	50	90	95	98	99	1-HR			24-HR	DEVIATION	VALID DATA	1-HR	24-HR		
6	6	8	6	19	25	39	42	0	-	52	3	-	23	2	100	0	0

- NOTES: 1. FLAGS FOR INVALID DATA :
- D: DYNAMIC CALIBRATION
 - T: TELEMETRY/DATALOGGR FAULT
 - M: MAINTENANCE OR ANALYZER FAULT
 - P: POWER FAILURE

THE HONGKONG ELECTRIC COMPANY, LTD.
AIR QUALITY DATA MONTHLY TIME SERIES REPORT

STATION : CHUNG HOM KOK ZONE SUBSTATION
POLLUTANT : SULPHUR DIOXIDE

MONTH: APRIL

YEAR : 2025
UNIT : MICROGRAMS/CUBIC METER

DAY	1	2	3	4	5	6	7	8	9	10	11	12	13	14	15	16	17	18	19	20	21	22	23	24	MEAN
1	0	0	0	0	0	0	0	0	0	1	1	1	5	3	2	2	1	2	1	1	1	1	1	3	1
2	2	1	1	1	0	0	0	0	1	1	1	0	0	0	0	0	1	1	1	1	1	1	1	2	1
3	1	1	1	1	1	2	2	1	2	3	4	2	2	1	1	2	3	2	2	2	1	1	1	3	2
4	1	1	1	2	2	2	1	1	1	1	2	2	1	2	1	1	1	1	1	1	1	1	1	3	1
5	1	1	1	1	1	0	0	1	0	0	1	1	0	1	0	0	0	0	0	0	1	1	0	1	1
6	1	1	1	1	0	0	1	1	1	1	1	2	2	2	1	1	2	2	1	1	1	1	1	3	1
7	1	1	1	1	1	2	2	2	2	2	2	2	2	2	1	1	2	2	2	2	1	1	1	1	2
8	1	1	1	1	1	1	1	1	1	1	1	2	2	2	2	1	1	1	1	1	1	1	1	3	1
9	1	1	1	1	1	1	1	1	1	1	2	1	1	1	2	2	4	2	4	3	3	3	2	3	2
10	1	2	1	1	1	2	1	2	3	2	4	3	5	5	5	5	4	3	3	3	2	2	3	2	3
11	2	1	1	1	1	1	1	1	1	1	1	1	1	2	1	2	2	2	2	2	2	2	1	4	2
12	2	1	2	1	2	2	2	2	4	3	2	2	2	3	4	3	2	2	1	1	1	1	1	2	2
13	1	1	1	1	1	1	1	1	1	1	0	1	1	1	1	1	1	1	1	1	1	1	2	4	1
14	2	2	2	3	4	6	6	6	5	6	8	9	5	2	3	5	6	5	3	3	3	3	4	6	4
15	4	4	4	4	5	8	6	4	4	3	3	3	2	3	3	2	2	3	2	3	2	2	3	2	3
16	1	1	1	1	1	1	1	1	1	1	1	1	1	1	1	1	1	1	1	1	1	1	1	3	1
17	1	1	1	1	0	1	1	1	0	0	1	1	1	1	1	1	1	1	1	1	1	1	1	3	1
18	1	1	1	1	1	1	0	1	1	1	1	1	1	1	1	1	1	1	1	1	1	1	1	3	1
19	1	3	2	1	2	1	1	1	1	2	2	3	2	2	2	3	2	2	2	1	2	1	1	2	2
20	2	2	1	2	2	2	2	2	2	2	3	3	2	2	2	2	2	4	2	3	2	1	1	4	2
21	2	3	2	2	2	2	2	2	2	2	2	2	2	3	3	3	2	2	3	2	2	2	1	4	2
22	2	2	2	2	2	2	2	2	2	3	2	3	3	3	3	3	3	2	2	2	2	2	2	5	2
23	3	2	2	2	2	2	3	4	3	3	3	3	3	2	2	2	3	2	2	2	2	2	4	5	3
24	3	3	3	3	2	2	3	4	4	4	3	2	2	2	2	1	2	2	2	2	2	2	2	5	3
25	2	2	2	1	1	1	1	1	1	1	2	2	2	2	2	2	2	2	2	2	1	1	1	3	2
26	2	1	1	1	1	1	1	1	1	1	1	1	1	1	1	1	1	0	1	1	1	1	1	4	1
27	1	1	1	1	1	1	1	1	1	1	1	1	1	1	1	1	0	1	1	1	1	1	1	3	1
28	1	1	1	1	1	1	1	1	2	5	9	7	10	10	8	7	6	6	6	2	2	2	2	6	4
29	2	2	2	1	1	1	2	2	2	2	2	2	2	2	2	3	2	2	2	2	2	2	2	4	2
30	2	2	1	2	1	1	1	2	1	1	1	1	1	1	1	1	1	1	1	1	1	1	1	5	1

MONTHLY STATISTICS:

GEOM	ARITH-----PERCENTILES-----							-----RANGE-----				STN GEOM	PERCENT	NO. OF TIMES		
MEAN	MEDIAN	MEAN	50	90	95	98	99	1-HR	24-HR	DEVIATION	VALID DATA	ABOVE	LIMIT LEVEL			
2	1	2	1	3	4	6	7	0	-	10	1	-	4	2	100	0

- NOTES: 1. FLAGS FOR INVALID DATA :
- D: DYNAMIC CALIBRATION
 - T: TELEMETRY/DATALOGGR FAULT
 - M: MAINTENANCE OR ANALYZER FAULT
 - P: POWER FAILURE

THE HONGKONG ELECTRIC COMPANY, LTD.
AIR QUALITY DATA MONTHLY TIME SERIES REPORT

STATION : CHUNG HOM KOK ZONE SUBSTATION
POLLUTANT : NITROGEN DIOXIDE

MONTH: APRIL

YEAR : 2025

UNIT : MICROGRAMS/CUBIC METER

DAY	1	2	3	4	5	6	7	8	9	10	11	12	13	14	15	16	17	18	19	20	21	22	23	24	MEAN
1	28	23	21	18	18	19	18	25	32	35	32	32	55	39	32	20	14	26	28	19	19	20	18	16	25
2	16	9	8	5	4	5	5	8	11	13	11	9	8	8	10	10	10	11	13	9	12	13	9	13	10
3	15	14	12	9	10	8	7	7	13	38	64	25	10	7	8	14	30	22	16	14	11	12	12	13	16
4	9	8	7	8	9	10	9	10	10	10	10	10	12	10	9	9	12	13	9	7	6	8	9	13	9
5	11	9	9	7	8	7	9	36	31	12	36	50	62	39	15	14	15	16	10	14	15	14	8	6	19
6	8	8	7	8	8	12	18	19	26	17	17	29	22	11	8	12	10	15	9	10	13	13	11	9	13
7	8	9	8	6	6	8	10	13	13	11	9	9	7	8	8	7	12	15	17	15	13	11	10	9	10
8	8	7	8	11	9	31	32	16	13	11	14	16	16	11	13	11	9	12	9	6	7	5	4	4	12
9	4	M	6	4	6	8	11	15	18	16	18	9	5	12	23	17	22	23	58	45	53	26	28	15	19
10	10	14	12	17	13	26	12	27	48	29	28	29	36	38	42	35	37	41	34	25	19	18	33	19	27
11	11	9	12	12	9	8	14	28	30	19	15	7	5	15	7	14	14	25	21	27	26	21	21	20	16
12	22	15	17	10	18	26	20	22	31	22	19	15	17	26	32	29	26	21	26	10	11	8	8	10	19
13	7	6	7	6	4	4	5	6	8	8	8	7	13	13	14	15	19	20	23	28	24	42	88	54	18
14	41	36	40	67	83	81	59	52	42	58	86	95	58	39	44	61	69	46	40	42	41	36	39	34	54
15	25	29	27	30	45	73	21	18	19	16	13	17	15	13	12	10	18	32	22	18	12	10	12	12	22
16	12	11	9	8	7	8	8	7	9	9	9	7	6	6	6	5	6	8	7	6	4	4	5	5	7
17	4	3	3	3	3	3	4	6	8	5	5	5	4	3	3	4	4	8	10	7	8	10	9	8	5
18	6	7	7	5	7	6	9	12	22	19	16	14	11	10	12	16	25	21	23	12	23	19	19	10	14
19	14	29	7	23	20	17	12	19	18	25	9	14	10	18	10	20	17	17	11	12	14	13	26	12	16
20	35	18	11	17	26	26	30	35	21	18	22	17	15	10	10	9	16	33	20	28	15	15	17	21	20
21	23	26	24	19	22	15	14	20	16	14	9	6	9	18	20	17	7	10	36	25	17	13	15	22	17
22	23	22	27	16	16	13	20	22	14	13	12	13	19	20	16	14	11	21	26	10	19	24	15	23	18
23	23	M	23	26	23	30	36	29	20	17	14	17	20	9	12	11	15	18	20	23	22	23	30	28	21
24	21	21	27	29	15	16	28	28	28	20	11	10	7	5	10	8	14	14	16	27	19	32	23	12	18
25	12	14	9	2	8	17	6	12	16	31	41	42	26	22	24	29	29	36	33	20	10	12	8	7	19
26	5	13	4	4	4	4	4	4	6	6	6	6	6	6	8	7	6	6	6	5	5	4	4	5	6
27	4	3	3	3	5	5	5	6	5	5	5	6	4	7	6	8	10	9	6	6	6	5	4	4	5
28	3	5	6	6	6	4	10	15	31	67	96	83	90	84	64	76	63	78	78	43	50	13	9	13	41
29	11	9	7	6	5	5	8	10	8	7	7	6	7	7	8	8	9	11	12	9	8	8	8	8	8
30	7	9	8	7	8	8	9	10	11	14	12	8	8	6	6	6	5	10	10	8	5	6	7	7	8

MONTHLY STATISTICS:

GEOM		ARITH-----PERCENTILES-----							-----RANGE-----				STN GEOM	PERCENT	NO. OF TIMES		
MEAN	MEDIAN	MEAN	50	90	95	98	99	1-HR	24-HR	DEVIATION	VALID DATA	1-HR	24-HR				
13	12	17	12	32	43	67	83	2	-	96	5	-	54	2	100	0	0

NOTES: 1. FLAGS FOR INVALID DATA :
D: DYNAMIC CALIBRATION
T: TELEMETRY/DATALOGGR FAULT
M: MAINTENANCE OR ANALYZER FAULT
P: POWER FAILURE

THE HONGKONG ELECTRIC COMPANY, LTD.
AIR QUALITY DATA MONTHLY TIME SERIES REPORT

STATION : VICTORIA ROAD SUBSTATION
POLLUTANT : SULPHUR DIOXIDE

MONTH: APRIL

YEAR : 2025
UNIT : MICROGRAMS/CUBIC METER

DAY	1	2	3	4	5	6	7	8	9	10	11	12	13	14	15	16	17	18	19	20	21	22	23	24	MEAN
1	1	1	1	2	2	2	2	1	2	2	2	2	2	2	2	M	M	2	2	1	1	2	2	2	2
2	2	1	2	1	1	2	1	2	2	2	1	2	1	2	2	2	1	1	2	1	2	1	1	1	2
3	1	1	2	1	1	2	1	1	2	2	2	2	2	2	2	2	2	2	2	2	2	1	1	2	2
4	1	1	2	2	2	2	1	2	1	2	2	2	2	1	2	2	2	2	1	1	1	2	2	2	2
5	1	1	2	2	2	2	2	2	2	2	2	2	2	2	2	2	2	2	2	2	2	2	2	3	2
6	2	2	2	1	1	2	2	2	2	2	3	3	2	3	2	2	2	2	2	2	2	2	2	2	2
7	2	2	2	2	2	2	2	2	2	2	2	2	2	2	1	1	2	2	2	2	2	2	2	1	2
8	1	2	1	2	2	2	2	2	2	2	2	2	2	2	2	2	2	2	2	2	2	2	2	2	2
9	2	2	2	2	2	2	2	2	2	2	2	3	3	2	2	2	2	2	2	2	2	2	2	2	2
10	2	2	2	2	2	2	2	3	2	2	3	3	2	3	3	2	2	2	2	2	2	2	2	2	2
11	2	2	2	2	2	2	2	3	2	2	2	2	2	2	2	2	3	3	3	2	2	2	2	2	2
12	2	2	2	2	1	2	2	2	2	2	2	2	2	2	2	2	2	2	2	2	2	2	2	2	2
13	2	2	2	2	2	2	2	2	2	1	2	2	2	2	2	2	2	2	2	2	2	2	1	2	2
14	2	3	2	2	3	4	3	4	4	3	3	3	3	2	2	2	3	3	3	2	2	2	2	2	3
15	2	2	2	2	3	2	3	3	3	3	2	2	2	3	2	2	2	2	2	2	2	2	2	2	2
16	2	2	2	2	2	2	2	2	2	2	2	2	2	2	2	2	2	2	1	2	2	2	2	2	2
17	2	2	2	2	2	2	2	2	2	2	2	2	2	2	2	2	2	2	2	2	2	2	2	2	2
18	2	2	2	2	2	2	2	2	2	2	2	2	2	2	3	2	2	2	2	2	2	2	3	2	2
19	2	2	2	2	2	2	2	2	2	2	2	2	2	2	2	2	2	2	2	2	2	2	2	2	2
20	2	2	2	2	2	2	2	2	2	2	2	2	2	2	2	2	2	2	2	2	2	2	2	2	2
21	2	2	2	2	2	2	2	2	2	2	2	2	2	2	3	2	2	2	2	2	2	2	2	2	2
22	2	2	2	2	2	2	2	2	2	2	2	2	2	3	2	2	2	2	2	2	2	2	2	2	2
23	2	2	2	2	2	2	2	2	2	2	3	2	2	3	3	2	2	3	2	2	2	1	2	2	2
24	2	2	2	2	2	2	2	2	2	2	2	2	2	2	2	2	2	2	1	2	2	2	2	2	2
25	2	2	2	2	2	2	2	2	2	2	3	3	2	3	2	3	2	2	2	2	2	2	2	2	2
26	2	2	2	2	2	2	2	2	1	2	2	2	2	2	2	2	2	2	2	2	2	2	2	2	2
27	2	2	2	2	2	2	2	2	2	2	2	2	2	2	2	2	2	2	2	2	2	2	2	2	2
28	2	2	2	2	2	2	3	3	4	5	5	5	5	3	3	3	2	3	2	2	2	2	2	3	3
29	2	2	2	2	2	2	2	2	2	2	2	2	2	2	2	2	2	2	2	2	2	2	2	2	2
30	2	2	2	2	2	2	2	2	2	2	2	2	2	2	2	2	2	2	2	2	2	2	2	2	2

MONTHLY STATISTICS:

GEOM	ARITH-----PERCENTILES-----							-----RANGE-----			STN GEOM	PERCENT	NO. OF TIMES
MEAN	MEDIAN	MEAN	50	90	95	98	99	1-HR	24-HR	DEVIATION	VALID DATA	ABOVE	LIMIT LEVEL
2	2	2	2	2	3	3	4	1	-	5	2	-	3
											1	100	0

- NOTES: 1. FLAGS FOR INVALID DATA :
- D: DYNAMIC CALIBRATION
 - T: TELEMETRY/DATALOGGR FAULT
 - M: MAINTENANCE OR ANALYZER FAULT
 - P: POWER FAILURE

THE HONGKONG ELECTRIC COMPANY, LTD.
AIR QUALITY DATA MONTHLY TIME SERIES REPORT

STATION : VICTORIA ROAD SUBSTATION
POLLUTANT : NITROGEN DIOXIDE

MONTH: APRIL

YEAR : 2025

UNIT : MICROGRAMS/CUBIC METER

DAY	1	2	3	4	5	6	7	8	9	10	11	12	13	14	15	16	17	18	19	20	21	22	23	24	MEAN
1	6	5	6	5	5	7	8	10	12	12	14	17	17	18	19	M	M	20	19	17	18	14	10	9	12
2	8	7	6	5	5	5	10	13	16	14	11	20	18	9	9	9	9	14	15	7	6	6	6	5	10
3	7	6	4	4	4	4	6	14	25	31	32	32	31	14	8	9	16	20	15	11	11	8	7	7	14
4	6	4	3	3	3	4	5	6	6	7	7	6	7	7	8	7	6	8	6	7	5	5	5	5	6
5	5	5	16	12	10	10	8	11	17	24	21	18	18	33	30	32	18	29	25	15	22	13	7	6	17
6	5	4	4	4	6	10	12	12	16	21	28	33	30	27	24	22	26	35	30	12	8	6	6	7	16
7	6	9	12	4	4	4	14	16	19	27	22	18	15	12	15	16	16	17	16	11	8	7	15	18	13
8	14	17	15	9	16	26	16	31	32	36	34	30	27	14	12	9	9	13	14	12	13	28	15	19	19
9	18	M	12	10	13	24	22	30	26	24	17	21	17	14	9	11	11	9	15	14	21	11	10	7	16
10	8	8	14	5	5	6	10	24	17	28	26	16	10	10	14	15	13	7	9	10	11	8	8	6	12
11	3	3	7	4	4	5	11	19	19	17	16	16	10	12	12	14	13	19	16	17	11	11	11	9	12
12	8	8	8	5	4	5	9	8	9	8	10	9	8	11	11	8	7	7	9	5	5	5	4	5	7
13	4	3	3	2	2	2	2	3	4	6	6	5	6	5	7	7	9	9	13	11	11	17	13	15	7
14	18	20	24	26	24	24	24	24	19	20	23	25	21	19	21	24	32	27	19	13	21	21	15	19	22
15	10	14	14	12	14	14	14	15	17	20	27	29	19	18	21	13	17	19	15	8	6	6	6	9	15
16	6	6	15	8	11	15	15	22	18	20	22	14	9	8	7	8	11	10	10	6	5	4	4	4	11
17	3	3	4	2	2	3	11	18	16	12	8	6	7	5	5	6	6	7	9	7	6	5	4	6	7
18	8	3	4	3	2	3	7	13	19	16	10	11	10	10	11	14	12	10	13	14	12	15	9	7	10
19	6	6	7	6	4	10	10	10	9	9	9	7	7	7	6	7	6	7	7	7	8	8	7	10	8
20	7	8	5	5	5	6	9	10	8	7	8	10	10	12	9	8	12	9	7	6	7	7	6	9	8
21	11	8	7	4	4	4	6	7	7	6	7	6	5	7	11	9	6	7	6	4	7	6	5	8	7
22	5	5	5	4	5	6	6	8	6	7	5	7	8	11	7	8	9	8	6	8	12	9	5	5	7
23	7	M	9	9	6	7	7	7	7	9	11	9	8	6	12	11	7	10	8	7	8	6	6	6	8
24	5	5	6	7	4	6	7	10	12	11	8	6	4	5	5	8	9	8	10	8	8	9	18	12	8
25	12	5	8	7	5	5	7	12	24	28	36	28	20	18	11	12	15	13	13	8	7	10	7	5	13
26	3	2	2	2	2	2	3	3	5	7	9	8	8	10	10	11	11	8	7	5	4	4	4	4	6
27	3	2	2	2	2	2	3	3	4	4	3	4	4	4	5	10	13	16	12	18	16	25	22	21	8
28	20	19	16	20	17	22	22	25	24	27	24	25	25	28	35	33	28	43	22	31	14	13	21	35	25
29	11	7	4	4	3	3	4	7	11	15	13	14	10	14	13	14	13	13	12	9	7	7	7	7	9
30	7	5	4	4	3	3	4	6	9	10	16	14	6	8	6	9	11	8	12	11	12	13	13	7	8

MONTHLY STATISTICS:

GEOM	ARITH-----PERCENTILES-----							-----RANGE-----					STN GEOM	PERCENT	NO. OF TIMES		
MEAN	MEDIAN	MEAN	50	90	95	98	99	1-HR		24-HR			DEVIATION	VALID DATA	1-HR	24-HR	
9	9	11	9	22	27	32	33	2	-	43	6	-	25	2	99	0	0

- NOTES: 1. FLAGS FOR INVALID DATA :
- D: DYNAMIC CALIBRATION
 - T: TELEMETRY/DATALOGGR FAULT
 - M: MAINTENANCE OR ANALYZER FAULT
 - P: POWER FAILURE

THE HONGKONG ELECTRIC COMPANY, LTD.
AIR QUALITY DATA MONTHLY TIME SERIES REPORT
MONTH: APRIL

STATION : AP LEI CHAU
POLLUTANT : SULPHUR DIOXIDE

YEAR : 2025
UNIT : MICROGRAMS/CUBIC METER

DAY	1	2	3	4	5	6	7	8	9	10	11	12	13	14	15	16	17	18	19	20	21	22	23	24	MEAN
1	0	0	0	0	0	0	0	0	0	0	1	5	3	1	1	2	2	1	1	0	0	0	0	0	1
2	1	0	0	0	0	0	0	0	0	1	0	0	0	0	0	0	0	0	0	0	0	0	0	1	0
3	0	0	0	0	0	0	1	1	2	7	7	4	4	2	0	1	1	1	1	1	1	0	0	1	1
4	0	0	0	0	1	1	1	1	1	0	1	1	0	0	0	0	0	0	0	0	0	0	0	0	0
5	0	0	0	0	0	0	0	0	0	0	1	1	1	0	0	0	0	0	0	0	0	0	0	1	0
6	0	0	0	0	0	0	1	1	2	6	7	7	4	5	3	2	3	3	1	1	0	0	0	0	2
7	1	0	0	0	0	0	1	0	1	1	1	1	1	1	0	1	0	0	0	0	0	0	0	1	0
8	1	0	1	0	2	2	2	1	1	4	8	10	4	2	1	1	0	0	0	0	0	0	0	0	2
9	0	0	0	0	0	1	3	1	1	1	1	2	2	1	1	0	2	1	0	2	2	2	2	2	1
10	1	1	1	1	1	1	2	8	2	12	5	4	3	4	3	2	2	2	2	1	2	2	3	3	3
11	1	1	1	1	0	0	0	3	1	0	2	1	1	2	1	2	3	2	1	1	1	2	1	1	1
12	2	1	1	1	1	1	1	1	3	2	1	1	1	1	1	1	1	1	1	0	0	0	0	1	1
13	1	0	1	1	0	0	0	0	0	0	0	0	0	0	0	0	0	0	0	0	0	1	1	1	0
14	1	2	3	4	7	7	6	7	5	5	6	6	3	2	2	3	5	4	2	2	2	2	2	2	4
15	2	2	2	4	8	5	5	5	4	3	3	5	2	3	2	2	1	2	2	1	1	1	1	2	3
16	1	1	1	0	0	0	0	0	1	1	0	0	0	0	0	0	0	0	0	0	0	0	0	1	0
17	0	0	0	0	0	0	0	0	0	0	0	0	0	0	0	0	0	0	0	0	0	0	0	1	0
18	0	0	0	0	0	0	0	0	0	0	0	0	0	1	1	2	2	1	2	1	1	1	1	1	1
19	2	2	1	1	1	1	1	1	1	1	1	1	2	1	1	2	1	1	1	0	1	1	1	2	1
20	1	1	1	1	1	1	1	2	1	1	2	2	1	1	1	1	1	2	0	1	1	1	1	3	1
21	3	2	2	2	1	1	1	1	2	2	2	2	2	2	4	2	1	1	1	1	1	1	1	2	2
22	1	1	2	1	1	1	1	2	2	1	1	2	3	2	1	2	2	2	1	1	1	1	1	1	1
23	2	1	2	1	1	1	2	2	3	2	2	2	1	2	2	2	2	2	1	1	1	1	3	3	2
24	1	2	2	2	1	1	2	1	2	2	2	M	2	2	2	2	2	1	1	2	2	2	2	5	2
25	2	1	1	1	1	1	1	1	1	3	3	2	2	3	4	3	2	2	1	1	1	1	1	1	2
26	1	1	1	1	0	0	0	0	0	1	1	1	1	1	1	1	0	0	0	0	0	0	0	2	1
27	1	1	0	1	0	1	1	0	0	0	1	1	1	1	0	0	1	1	0	0	1	1	2	1	1
28	1	1	2	3	3	4	3	9	11	9	8	6	12	5	6	4	3	6	4	3	2	2	2	4	5
29	2	1	1	1	1	1	1	2	1	1	1	2	1	1	2	1	1	1	1	1	1	1	1	1	1
30	1	1	1	1	1	1	1	1	1	1	3	1	1	1	1	1	1	1	1	1	1	1	1	3	1

MONTHLY STATISTICS:

GEOM	ARITH-----PERCENTILES-----							RANGE-----			STN GEOM	PERCENT	NO. OF TIMES
MEAN	MEDIAN	MEAN	50	90	95	98	99	1-HR	24-HR	DEVIATION	VALID DATA	ABOVE	LIMIT LEVEL
2	1	1	1	3	4	7	8	0	-	12	0	-	5
											2	100	0

- NOTES: 1. FLAGS FOR INVALID DATA :
- D: DYNAMIC CALIBRATION
 - T: TELEMETRY/DATALOGGR FAULT
 - M: MAINTENANCE OR ANALYZER FAULT
 - P: POWER FAILURE

THE HONGKONG ELECTRIC COMPANY, LTD.
AIR QUALITY DATA MONTHLY TIME SERIES REPORT
MONTH: APRIL

STATION : AP LEI CHAU
POLLUTANT : NITROGEN DIOXIDE

YEAR : 2025
UNIT : MICROGRAMS/CUBIC METER

DAY	1	2	3	4	5	6	7	8	9	10	11	12	13	14	15	16	17	18	19	20	21	22	23	24	MEAN
1	20	M	15	14	14	18	23	26	29	24	28	36	31	24	22	25	26	24	37	34	25	14	13	27	24
2	17	13	10	9	8	10	14	20	21	21	9	22	9	6	4	4	4	5	4	8	17	11	11	15	11
3	17	17	8	6	7	7	11	25	29	71	68	54	22	5	3	5	11	12	8	9	12	9	9	17	18
4	8	3	3	3	4	6	6	8	8	6	7	8	10	9	9	11	8	10	7	6	5	6	6	8	7
5	7	5	6	10	14	8	27	29	27	44	57	62	54	42	33	36	39	27	30	23	20	14	11	15	27
6	11	7	6	8	14	21	40	38	40	49	54	65	46	51	55	49	64	36	11	8	15	8	9	12	30
7	9	8	7	5	4	5	9	21	10	9	9	6	6	5	4	5	6	9	8	7	7	8	11	10	8
8	16	13	20	11	49	54	36	33	34	69	71	52	39	9	8	8	4	4	5	12	6	3	2	5	23
9	3	11	3	2	18	27	51	8	14	16	8	27	21	14	17	10	15	23	20	40	34	30	18	14	19
10	19	14	28	27	23	14	34	53	14	52	34	23	16	20	20	23	26	32	17	22	21	31	33	33	26
11	21	9	16	14	7	7	11	30	18	8	17	11	6	10	10	17	28	23	19	15	17	20	12	15	15
12	16	11	10	6	6	6	14	9	11	9	12	8	8	11	13	11	18	20	22	11	10	10	7	9	11
13	8	6	4	3	3	3	4	5	6	7	7	7	10	13	13	24	22	25	26	45	49	49	47	36	18
14	27	52	74	73	66	49	36	40	30	38	41	50	31	29	28	48	63	47	41	29	31	41	29	19	42
15	32	M	24	69	112	72	23	31	43	29	25	45	13	12	7	5	4	8	7	8	5	5	6	11	26
16	14	10	7	5	5	9	14	10	8	5	4	3	2	3	3	3	3	3	3	2	2	3	1	3	5
17	2	3	1	1	2	2	5	12	4	3	2	1	2	1	2	3	0	2	3	3	2	3	4	3	3
18	2	2	1	2	2	3	3	4	11	8	6	8	10	10	12	22	22	9	20	10	17	20	11	10	9
19	17	19	12	16	12	14	7	9	10	9	7	4	8	4	6	10	7	8	5	6	19	13	14	10	10
20	12	12	6	16	12	13	14	13	7	8	7	13	6	6	7	8	12	11	8	9	12	8	10	18	10
21	25	19	14	14	14	14	12	10	11	9	8	5	11	11	22	13	8	12	16	6	10	8	7	11	12
22	7	7	10	8	9	14	9	14	7	6	3	10	12	10	7	13	15	16	7	6	12	11	9	12	10
23	11	11	13	8	8	11	19	16	19	12	14	11	8	9	10	9	10	15	9	9	11	12	12	17	12
24	5	12	19	8	9	10	9	5	16	9	7	M	5	8	5	8	10	6	9	14	19	23	20	23	11
25	11	5	5	9	6	10	11	15	26	39	45	29	37	32	39	33	36	22	13	15	7	11	9	7	20
26	5	3	3	3	2	3	3	4	6	8	8	8	9	7	6	8	8	7	7	4	4	5	5	4	5
27	3	3	2	2	3	3	3	5	6	6	4	4	2	4	3	4	5	6	7	13	8	33	34	7	7
28	24	16	32	38	37	44	45	56	62	67	66	60	57	39	42	40	38	64	45	63	54	52	52	50	48
29	29	M	7	5	4	4	7	10	10	8	8	7	5	5	5	6	6	4	5	6	7	6	7	8	7
30	8	6	7	6	4	6	9	15	17	15	27	5	3	5	2	3	4	3	6	5	4	7	4	8	7

MONTHLY STATISTICS:

GEOM	ARITH-----PERCENTILES-----							-----RANGE-----				STN GEOM	PERCENT	NO. OF TIMES			
MEAN	MEDIAN	MEAN	50	90	95	98	99	1-HR		24-HR	DEVIATION	VALID DATA	1-HR	24-HR			
11	10	16	10	39	51	64	69	0	-	112	3	-	48	2	99	0	0

NOTES: 1. FLAGS FOR INVALID DATA :
D: DYNAMIC CALIBRATION
T: TELEMETRY/DATALOGGR FAULT
M: MAINTENANCE OR ANALYZER FAULT
P: POWER FAILURE

THE HONGKONG ELECTRIC COMPANY, LTD.
AIR QUALITY DATA MONTHLY TIME SERIES REPORT

STATION : CHEUNG CHAU
POLLUTANT : SULPHUR DIOXIDE

MONTH: APRIL

YEAR : 2025

UNIT : MICROGRAMS/CUBIC METER

DAY	1	2	3	4	5	6	7	8	9	10	11	12	13	14	15	16	17	18	19	20	21	22	23	24	MEAN	
1	2	2	2	2	2	2	2	2	2	2	2	3	3	4	3	3	3	3	3	3	3	3	3	3	2	3
2	3	3	3	3	3	3	3	3	3	3	4	4	3	3	3	3	3	3	3	3	3	2	3	3	3	3
3	3	3	3	3	3	3	3	3	4	4	4	4	4	4	5	4	4	4	4	4	3	3	3	3	3	4
4	3	3	3	3	3	3	3	3	3	3	3	4	4	3	4	4	3	4	3	3	3	3	3	3	3	3
5	3	3	3	3	3	3	3	3	3	3	3	3	3	2	3	3	3	3	3	3	3	3	3	3	4	3
6	3	3	3	3	3	4	4	4	4	4	4	5	4	4	5	4	5	4	4	3	4	3	3	3	4	4
7	3	4	3	4	4	4	4	4	6	5	4	4	4	4	4	4	4	4	4	4	4	3	3	3	4	4
8	3	3	3	4	4	4	4	5	5	6	5	5	5	6	5	6	4	4	4	4	4	3	4	4	4	4
9	4	4	3	4	4	3	4	5	6	8	6	5	6	5	4	5	4	4	4	5	4	4	4	4	4	5
10	4	4	4	4	4	4	4	4	4	5	6	7	5	6	4	4	4	4	4	4	4	4	4	4	4	4
11	4	4	4	4	4	4	3	3	4	4	5	5	4	5	4	4	4	4	4	3	4	4	3	4	4	4
12	4	4	4	4	4	4	4	4	4	4	4	4	4	4	4	4	4	4	4	4	3	3	4	4	4	4
13	3	3	3	4	3	3	3	3	3	3	3	3	3	3	3	4	3	3	3	3	3	4	5	4	4	3
14	4	5	5	4	5	4	6	7	8	9	7	6	5	4	4	5	5	5	4	4	3	4	4	4	5	5
15	4	4	4	3	4	4	5	7	10	8	7	6	7	7	8	7	7	7	6	5	4	4	4	4	5	6
16	4	4	4	3	3	3	3	4	3	3	3	3	3	3	3	3	3	3	3	3	3	3	3	5	3	
17	3	3	3	3	3	3	3	3	4	3	3	3	3	4	4	4	5	4	4	4	4	4	4	4	4	4
18	4	4	4	4	4	4	4	3	4	4	3	3	4	4	4	4	4	4	4	4	4	3	3	4	4	4
19	4	4	4	4	4	4	4	4	4	4	4	4	4	4	4	4	4	4	4	4	3	3	4	5	4	4
20	4	4	4	4	4	4	4	4	4	4	4	3	4	4	4	4	3	4	4	4	4	4	4	4	5	4
21	5	4	4	4	4	4	4	4	4	4	4	4	4	4	4	3	4	3	2	3	4	3	3	5	4	4
22	4	4	4	4	4	4	4	4	4	4	3	3	4	4	4	4	4	4	3	4	4	4	4	4	5	4
23	4	4	4	4	4	4	4	4	4	4	4	4	4	4	4	4	4	3	4	4	4	4	4	4	6	4
24	4	4	4	4	4	4	4	4	4	4	4	3	3	4	4	6	2	3	4	4	4	4	4	4	8	4
25	5	5	4	4	4	4	4	4	4	4	4	4	4	4	4	4	4	6	7	4	4	4	4	5	4	4
26	4	4	4	4	4	3	3	4	4	4	4	4	4	4	4	4	4	4	4	4	4	4	4	4	5	4
27	4	4	4	4	4	3	4	4	4	4	4	4	4	4	4	4	4	5	5	4	5	4	4	4	5	4
28	4	4	5	5	4	5	5	5	5	4	5	M	5	5	5	6	6	6	5	5	5	4	5	5	5	5
29	4	4	5	4	4	4	4	11	6	4	5	6	5	5	4	4	4	4	4	4	4	4	4	4	5	5
30	4	4	4	4	4	4	4	4	4	4	4	6	4	4	4	4	4	4	4	4	4	4	4	4	5	4

MONTHLY STATISTICS:

GEOM	ARITH-----PERCENTILES-----							-----RANGE-----				STN GEOM	PERCENT	NO. OF TIMES		
MEAN	MEDIAN	MEAN	50	90	95	98	99	1-HR	24-HR	DEVIATION	VALID DATA	ABOVE	LIMIT LEVEL			
4	4	4	4	5	6	7	8	2	-	11	3	-	6	1	100	0

- NOTES: 1. FLAGS FOR INVALID DATA :
- D: DYNAMIC CALIBRATION
 - T: TELEMETRY/DATALOGGR FAULT
 - M: MAINTENANCE OR ANALYZER FAULT
 - P: POWER FAILURE

THE HONGKONG ELECTRIC COMPANY, LTD.
AIR QUALITY DATA MONTHLY TIME SERIES REPORT

STATION : CHEUNG CHAU
POLLUTANT : NITROGEN DIOXIDE

MONTH: APRIL

YEAR : 2025
UNIT : MICROGRAMS/CUBIC METER

DAY	1	2	3	4	5	6	7	8	9	10	11	12	13	14	15	16	17	18	19	20	21	22	23	24	MEAN
1	40	38	37	31	28	26	28	27	29	27	27	26	36	49	43	33	31	25	23	25	48	42	30	35	33
2	29	27	29	31	27	27	33	38	45	45	52	42	28	18	10	13	8	11	10	9	11	13	25	35	26
3	38	34	37	15	35	59	69	65	59	71	23	26	27	30	36	23	14	16	22	16	12	11	15	32	33
4	20	16	17	11	22	24	14	12	15	9	12	30	77	53	42	50	22	51	14	17	9	14	12	37	25
5	44	38	30	24	38	26	32	53	50	60	71	54	48	33	37	42	69	75	86	59	71	74	92	74	53
6	66	69	60	53	57	64	63	61	48	36	44	55	34	30	56	72	116	106	103	35	70	38	56	30	59
7	45	54	49	43	56	69	42	69	97	57	9	22	39	29	17	6	5	11	11	16	17	23	39	41	36
8	35	36	40	34	52	76	45	72	66	83	52	51	29	28	23	31	19	21	27	18	12	16	23	118	42
9	48	M	42	70	42	38	24	53	47	55	27	26	22	12	9	23	12	18	30	35	25	20	21	65	33
10	64	74	63	16	21	22	75	36	32	26	40	31	18	32	19	16	19	13	25	22	21	40	39	34	33
11	57	59	51	46	42	18	28	34	40	35	34	29	13	14	8	11	14	17	13	21	18	19	18	15	27
12	16	21	13	15	18	21	21	16	17	13	11	13	13	18	29	27	30	26	30	23	15	13	14	14	19
13	10	11	14	13	9	11	12	14	15	20	31	29	28	24	34	45	34	34	64	74	75	67	118	54	35
14	95	106	66	67	63	76	79	72	79	81	54	34	23	13	16	48	51	31	34	62	53	47	46	90	58
15	120	71	75	63	50	59	108	101	103	67	66	71	36	64	68	52	37	50	48	63	37	30	30	25	62
16	30	59	55	32	39	53	18	26	12	10	8	8	4	5	6	6	5	5	6	9	9	8	8	11	18
17	9	22	9	8	11	8	11	14	23	10	6	5	4	5	5	9	23	20	21	16	14	29	16	67	15
18	46	47	41	23	32	54	49	52	61	52	26	22	26	28	19	16	11	14	11	16	13	11	9	15	29
19	12	12	15	10	15	12	15	13	12	14	13	9	14	12	9	8	11	14	14	17	20	17	16	22	14
20	13	11	9	11	14	16	14	17	18	15	11	10	9	11	8	7	8	12	17	16	16	25	40	51	16
21	36	12	12	23	23	18	17	18	14	12	14	13	10	7	9	8	11	10	16	20	18	20	18	19	16
22	14	14	15	15	15	13	18	16	14	11	8	11	8	7	7	10	10	11	15	15	12	13	13	22	13
23	17	21	23	26	19	21	24	21	19	10	11	11	11	7	10	7	9	9	16	24	16	15	19	15	16
24	22	14	14	16	16	18	18	17	16	9	10	7	7	5	5	16	10	8	11	15	17	37	37	47	16
25	42	37	44	40	19	10	33	36	58	46	35	43	30	47	57	35	57	84	77	34	25	16	13	19	39
26	13	7	6	7	6	6	12	11	13	13	15	16	18	15	9	15	22	20	17	19	18	17	19	19	14
27	18	18	15	11	13	14	14	12	12	10	8	6	8	10	26	10	38	72	90	46	87	55	61	66	30
28	50	56	65	58	42	69	70	60	62	38	45	M	39	34	28	38	50	65	61	88	58	61	91	29	55
29	22	17	29	9	10	8	19	25	20	20	33	19	14	11	8	9	8	7	12	13	11	9	9	12	15
30	20	20	10	14	41	27	28	18	64	59	51	20	9	9	17	9	13	8	12	19	28	12	11	11	22

MONTHLY STATISTICS:

GEOM		ARITH-----PERCENTILES-----							-----RANGE-----				STN GEOM	PERCENT	NO. OF TIMES		
MEAN	MEDIAN	MEAN	50	90	95	98	99	1-HR	24-HR	DEVIATION	VALID DATA	1-HR	24-HR				
23	22	30	22	64	72	90	103	4	-	120	13	-	62	2	100	0	0

NOTES:

1. FLAGS FOR INVALID DATA :
 - D: DYNAMIC CALIBRATION
 - T: TELEMETRY/DATALOGGR FAULT
 - M: MAINTENANCE OR ANALYZER FAULT
 - P: POWER FAILURE

THE HONGKONG ELECTRIC COMPANY, LTD.
AIR QUALITY DATA MONTHLY TIME SERIES REPORT
MONTH: MAY

STATION : VICTORIA PEAK
POLLUTANT : SULPHUR DIOXIDE

YEAR : 2025
UNIT : MICROGRAMS/CUBIC METER

DAY	1	2	3	4	5	6	7	8	9	10	11	12	13	14	15	16	17	18	19	20	21	22	23	24	MEAN
1	0	0	0	0	0	0	0	0	1	1	0	0	0	0	0	1	1	1	0	0	0	0	0	0	0
2	0	0	1	1	0	0	0	0	1	1	1	1	1	1	1	2	2	2	2	2	1	1	1	0	1
3	0	0	0	0	0	0	0	0	0	0	0	0	1	1	1	2	2	1	1	2	2	1	0	0	1
4	0	0	0	0	0	0	0	0	0	0	1	0	1	1	1	1	0	0	1	1	0	0	0	0	0
5	0	0	0	0	0	0	0	0	0	1	1	1	1	1	2	2	1	1	1	1	1	1	1	1	1
6	1	1	1	1	1	1	1	1	1	1	1	1	1	1	1	1	1	1	1	1	1	1	1	1	1
7	1	1	1	1	1	1	1	1	1	1	1	1	1	1	1	0	1	1	1	1	1	1	1	1	1
8	1	1	1	1	1	1	1	1	1	1	1	1	1	1	1	1	1	1	1	1	1	1	1	1	1
9	1	1	1	1	1	1	1	1	1	1	1	1	1	2	2	2	3	3	2	2	3	3	3	3	2
10	3	2	2	2	2	2	2	2	2	2	4	3	4	4	3	2	2	2	3	3	4	3	2	2	3
11	2	2	2	2	2	1	2	2	2	2	2	2	2	2	2	2	2	3	3	2	2	2	2	2	2
12	2	2	2	2	2	2	2	2	2	2	3	3	3	2	3	3	3	3	2	2	2	2	2	2	2
13	2	2	2	2	1	2	2	2	2	2	2	2	2	2	2	2	2	3	2	2	1	2	2	1	2
14	1	1	1	1	1	1	1	1	2	1	2	2	1	2	2	2	2	2	2	1	1	1	1	1	1
15	1	0	1	1	1	1	1	1	1	1	1	2	2	2	2	2	2	2	2	1	1	1	1	1	1
16	1	1	1	1	1	1	1	1	1	1	1	1	1	2	2	1	2	1	2	1	1	1	1	1	1
17	1	1	1	1	1	1	1	1	1	1	1	2	5	4	37	27	14	6	4	3	2	2	2	1	5
18	1	1	1	2	2	3	2	2	2	1	21	23	35	20	15	9	3	2	2	2	2	2	2	2	7
19	2	2	2	3	3	2	2	2	2	2	2	2	2	2	2	2	4	4	2	2	5	3	2	2	2
20	2	1	1	1	1	1	1	1	1	1	1	2	1	1	2	2	2	2	2	2	2	2	1	1	1
21	1	1	1	1	1	1	1	1	1	1	2	2	2	3	3	3	2	2	2	2	2	2	1	2	2
22	2	1	1	1	2	1	1	1	1	2	2	4	9	13	25	7	3	3	2	2	2	2	2	2	4
23	2	2	2	1	2	2	2	2	2	2	2	2	3	3	3	3	2	2	3	2	2	2	2	2	2
24	2	3	3	3	3	3	3	3	3	3	3	3	2	2	2	2	3	3	3	2	2	2	2	3	3
25	2	2	2	2	2	2	2	2	2	2	3	2	2	2	2	2	2	2	2	2	2	1	2	2	2
26	2	2	2	2	2	2	2	1	2	2	2	2	2	2	1	2	2	1	1	2	2	2	2	2	2
27	2	2	2	2	2	2	2	2	2	2	2	2	3	3	3	2	2	2	2	2	2	2	2	2	2
28	2	2	2	2	2	2	2	2	2	2	2	2	2	2	2	2	2	2	2	2	2	2	1	1	2
29	1	1	2	2	2	2	2	2	2	2	2	2	2	2	2	2	2	2	2	2	1	2	2	2	2
30	1	1	2	1	2	2	1	1	1	1	2	2	2	2	2	1	2	2	2	1	1	1	1	1	1
31	1	1	1	1	2	1	2	2	2	2	2	1	1	2	1	1	2	2	2	2	1	2	2	2	2

MONTHLY STATISTICS:

GEOM	ARITH-----PERCENTILES-----							-----RANGE-----					STN GEOM	PERCENT	NO. OF TIMES		
MEAN	MEDIAN	MEAN	50	90	95	98	99	1-HR		24-HR			DEVIATION	VALID DATA	ABOVE LIMIT LEVEL		
2	2	2	2	3	3	5	15	0	-	37	0	-	7	2	100	24-HR	
																0	

- NOTES: 1. FLAGS FOR INVALID DATA :
- D: DYNAMIC CALIBRATION
 - T: TELEMETRY/DATALOGGR FAULT
 - M: MAINTENANCE OR ANALYZER FAULT
 - P: POWER FAILURE

THE HONGKONG ELECTRIC COMPANY, LTD.
AIR QUALITY DATA MONTHLY TIME SERIES REPORT
MONTH: MAY

STATION : VICTORIA PEAK
POLLUTANT : NITROGEN DIOXIDE

YEAR : 2025
UNIT : MICROGRAMS/CUBIC METER

DAY	1	2	3	4	5	6	7	8	9	10	11	12	13	14	15	16	17	18	19	20	21	22	23	24	MEAN
1	3	1	0	0	0	0	2	3	16	26	8	5	5	7	8	14	15	18	15	14	21	31	11	5	10
2	13	24	9	4	3	5	10	17	22	24	8	13	4	3	3	4	4	9	14	8	4	3	2	2	9
3	1	1	2	1	0	0	2	4	7	8	10	14	20	15	17	25	24	26	31	25	7	5	1	6	11
4	2	2	1	1	0	0	2	4	4	7	7	5	5	5	6	10	11	9	10	9	5	4	5	2	5
5	0	1	1	0	2	1	2	5	4	5	5	3	4	5	4	6	8	11	15	13	6	5	5	5	5
6	2	4	4	2	1	1	2	9	12	8	8	4	8	6	7	10	7	8	6	4	5	7	4	3	6
7	2	M	2	4	5	6	7	5	6	7	6	6	6	6	7	7	6	8	3	2	1	1	1	0	5
8	0	1	1	0	0	1	1	2	1	2	2	2	1	2	4	7	9	7	7	4	6	2	2	2	3
9	1	0	0	0	0	1	2	4	9	2	5	9	8	21	27	37	44	65	43	49	58	89	66	73	26
10	60	53	45	15	11	4	9	14	29	24	47	34	37	37	9	8	22	35	47	64	73	31	14	13	31
11	10	6	3	2	2	3	4	7	7	11	11	10	10	8	11	11	22	27	28	23	19	17	13	10	11
12	10	9	5	6	5	3	7	14	15	16	14	9	6	11	11	12	9	4	4	8	4	6	7	4	8
13	5	5	2	2	1	1	3	4	7	12	13	10	10	9	9	13	13	19	12	7	4	4	4	3	7
14	1	1	1	1	1	1	2	4	4	4	4	4	4	1	3	2	3	11	7	2	0	0	0	0	3
15	0	0	0	1	0	1	1	1	2	3	3	3	3	6	2	2	3	2	2	1	2	2	2	0	2
16	0	0	0	1	0	0	3	5	5	3	5	6	6	4	6	8	11	11	12	8	8	3	6	4	5
17	3	2	2	0	2	1	2	4	3	11	7	7	7	8	17	22	16	11	10	12	10	10	4	4	7
18	3	1	2	15	7	11	3	4	3	4	14	15	16	15	12	8	5	4	3	7	6	8	10	6	8
19	5	2	1	9	7	3	3	6	5	4	9	7	4	4	5	6	9	9	6	10	22	4	4	3	6
20	4	3	3	2	1	4	5	6	5	5	3	4	3	5	4	5	5	6	5	5	5	5	3	4	4
21	4	3	2	1	1	0	3	4	5	4	3	5	3	4	6	7	7	5	7	5	7	6	6	5	4
22	4	1	2	2	2	3	7	8	3	2	2	4	9	10	14	8	6	8	4	5	7	6	4	5	5
23	2	1	1	1	3	1	5	3	11	6	7	5	4	3	2	5	3	5	3	3	10	8	23	7	5
24	13	20	13	26	34	30	24	20	20	22	33	28	18	11	11	23	22	29	30	28	21	20	16	22	22
25	23	16	15	11	6	5	6	8	7	9	12	13	13	11	14	17	18	19	19	15	14	14	10	10	13
26	7	4	4	3	2	3	8	14	15	20	14	9	11	12	14	18	18	9	12	11	6	6	5	5	10
27	5	3	3	3	4	4	6	9	10	13	9	10	11	10	14	13	14	14	10	8	7	7	4	3	8
28	3	3	3	3	3	2	2	3	4	4	8	6	7	9	9	13	12	7	2	2	3	6	4	3	5
29	1	0	0	1	0	0	1	7	11	10	21	12	13	13	19	23	14	9	10	5	5	9	2	2	8
30	1	1	1	2	1	1	2	5	9	10	8	9	6	4	9	10	11	6	6	4	4	1	0	2	5
31	1	1	1	0	2	2	2	3	4	3	3	3	3	2	2	0	3	6	6	5	3	3	2	3	3

MONTHLY STATISTICS:

GEOM	ARITH-----PERCENTILES-----										RANGE-----		STN GEOM	PERCENT	NO. OF TIMES		
MEAN	MEDIAN	MEAN	50	90	95	98	99	1-HR	24-HR	DEVIATION	VALID DATA	ABOVE	LIMIT	LEVEL			
6	5	8	5	18	25	38	56	0	-	89	2	-	31	3	100	0	0

- NOTES: 1. FLAGS FOR INVALID DATA :
- D: DYNAMIC CALIBRATION
 - T: TELEMETRY/DATALOGGR FAULT
 - M: MAINTENANCE OR ANALYZER FAULT
 - P: POWER FAILURE

THE HONGKONG ELECTRIC COMPANY, LTD.
AIR QUALITY DATA MONTHLY TIME SERIES REPORT

STATION : CHUNG HOM KOK ZONE SUBSTATION
POLLUTANT : SULPHUR DIOXIDE

MONTH: MAY

YEAR : 2025

UNIT : MICROGRAMS/CUBIC METER

DAY	1	2	3	4	5	6	7	8	9	10	11	12	13	14	15	16	17	18	19	20	21	22	23	24	MEAN	
1	2	1	1	1	1	1	1	1	1	1	4	2	5	5	6	5	4	2	3	2	2	2	2	2	7	3
2	3	3	3	4	3	3	3	3	4	5	3	2	2	2	2	2	2	3	4	2	2	2	2	2	6	3
3	2	2	2	1	1	1	1	1	1	1	1	1	1	2	1	2	2	2	2	2	2	2	2	2	4	2
4	2	2	2	2	2	1	1	1	2	2	2	1	2	1	1	1	1	2	1	2	2	2	2	2	6	2
5	2	2	2	2	2	2	2	2	2	2	1	2	2	1	1	2	2	2	2	2	2	2	2	2	6	2
6	4	3	3	2	2	3	2	4	6	4	4	4	3	2	2	2	2	2	2	2	2	2	2	2	4	3
7	3	3	2	3	2	2	3	2	2	2	2	2	2	3	2	2	2	2	2	2	2	2	3	6	2	
8	2	2	2	2	2	2	2	2	2	2	2	1	1	1	1	1	1	1	1	1	1	1	1	1	5	2
9	2	2	2	2	2	2	2	2	2	2	5	3	2	2	4	3	4	4	2	5	3	4	3	8	3	
10	4	4	5	3	3	3	3	7	9	11	10	6	4	2	2	2	2	2	2	3	3	2	1	7	4	
11	2	2	2	2	2	2	2	2	2	2	2	1	1	1	1	2	1	2	2	2	2	2	2	2	5	2
12	3	2	2	2	2	2	2	2	2	2	2	2	2	1	2	2	2	2	2	3	2	2	2	2	6	2
13	2	2	2	2	1	1	1	2	2	2	2	2	2	2	2	2	2	2	2	2	2	2	2	2	4	2
14	2	2	1	1	1	1	2	2	2	1	2	2	1	2	2	1	2	1	1	1	1	1	1	1	4	2
15	2	2	2	1	1	2	1	2	1	1	1	1	0	1	1	1	1	1	1	1	1	1	1	1	5	1
16	2	2	1	2	1	1	1	2	2	2	2	2	1	1	1	1	2	2	2	2	2	2	2	2	6	2
17	3	2	2	2	2	2	2	2	2	1	2	1	2	2	2	3	2	2	2	2	2	2	2	2	6	2
18	2	2	2	2	2	2	3	3	3	3	2	2	2	2	2	2	2	2	2	3	2	3	3	7	3	
19	3	3	3	2	3	3	3	3	3	2	3	2	2	2	1	2	2	2	2	2	2	2	2	2	7	3
20	3	3	3	2	2	2	2	2	2	2	2	2	1	1	1	2	2	1	2	2	2	2	2	2	6	2
21	3	2	2	2	2	2	2	2	2	2	1	1	1	1	2	2	2	1	2	2	2	2	2	2	6	2
22	3	2	2	2	2	2	2	2	2	2	1	2	2	2	2	2	2	2	2	2	2	2	2	2	8	2
23	3	3	3	3	2	2	2	3	3	3	M	3	2	2	2	2	2	3	3	3	3	3	3	2	6	3
24	4	3	3	3	3	3	3	3	5	6	4	3	2	2	2	2	2	4	4	4	3	2	2	8	3	
25	3	2	2	2	2	2	2	2	2	2	2	2	2	2	2	2	2	2	2	2	2	2	2	2	7	2
26	3	3	3	3	3	2	2	2	2	2	2	2	2	2	1	2	2	2	2	2	2	2	2	2	7	2
27	3	3	2	2	2	3	2	2	2	2	2	2	2	2	2	1	2	2	2	2	2	2	2	2	7	2
28	3	3	2	2	2	2	2	2	2	1	1	1	1	1	2	1	1	1	2	2	1	2	2	5	2	
29	2	2	2	2	2	2	2	2	1	1	2	2	2	1	1	1	1	1	2	1	1	2	2	7	2	
30	2	2	2	2	2	2	2	2	2	2	2	1	1	1	1	1	1	1	1	1	1	1	1	2	7	2
31	2	2	2	2	2	2	2	2	2	2	2	2	2	2	2	2	2	2	2	2	2	1	2	5	2	

MONTHLY STATISTICS:

GEOM	ARITH-----PERCENTILES-----							-----RANGE-----				STN GEOM	PERCENT	NO. OF TIMES		
MEAN	MEDIAN	MEAN	50	90	95	98	99	1-HR	24-HR	DEVIATION	VALID DATA	ABOVE	LIMIT LEVEL			
2	2	2	2	3	5	7	7	0	-	11	1	-	4	2	100	0

- NOTES: 1. FLAGS FOR INVALID DATA :
- D: DYNAMIC CALIBRATION
 - T: TELEMETRY/DATALOGGR FAULT
 - M: MAINTENANCE OR ANALYZER FAULT
 - P: POWER FAILURE

THE HONGKONG ELECTRIC COMPANY, LTD.
AIR QUALITY DATA MONTHLY TIME SERIES REPORT

STATION : CHUNG HOM KOK ZONE SUBSTATION
POLLUTANT : NITROGEN DIOXIDE

MONTH: MAY

YEAR : 2025

UNIT : MICROGRAMS/CUBIC METER

DAY	1	2	3	4	5	6	7	8	9	10	11	12	13	14	15	16	17	18	19	20	21	22	23	24	MEAN
1	4	3	2	2	3	4	5	8	7	16	56	25	33	35	37	33	25	15	39	33	22	21	35	19	20
2	24	30	34	52	41	51	35	35	37	50	32	10	7	8	7	7	9	14	33	21	13	12	9	9	24
3	6	5	6	5	4	4	5	10	13	11	8	8	6	5	7	10	11	13	26	31	19	16	13	13	11
4	8	9	11	9	6	5	6	8	13	17	9	17	11	4	6	7	10	11	13	13	14	13	18	10	10
5	7	12	5	20	18	8	12	13	9	9	6	9	6	4	4	8	9	12	17	23	22	20	23	15	12
6	36	20	14	13	23	22	19	36	34	25	21	17	13	7	8	9	14	17	9	12	7	17	13	12	17
7	22	M	19	24	20	23	26	22	17	28	20	16	20	15	16	14	8	16	14	12	7	6	8	5	16
8	5	7	7	5	6	5	8	7	7	8	8	6	4	5	4	6	8	11	5	8	7	7	11	15	7
9	9	5	7	7	10	8	7	11	9	10	32	23	19	26	60	47	56	61	62	119	77	111	75	101	40
10	99	114	117	68	68	72	54	73	83	96	97	57	41	12	8	8	10	13	16	49	26	15	10	8	51
11	6	5	5	4	5	5	6	8	9	10	8	7	8	8	11	11	12	15	16	17	11	10	11	14	9
12	12	16	10	7	7	5	9	11	12	12	9	6	5	6	6	8	10	11	14	21	11	18	14	7	10
13	6	6	5	5	5	4	5	7	5	6	5	6	5	5	6	7	7	8	6	6	4	3	3	4	5
14	3	3	3	3	4	5	6	7	8	6	5	5	3	4	4	6	6	6	6	5	3	6	4	7	5
15	5	4	5	6	6	4	7	9	8	5	4	4	3	2	2	5	4	4	6	7	12	10	9	7	6
16	4	4	4	5	5	7	13	12	9	8	7	6	4	3	3	5	7	8	15	13	11	10	10	21	8
17	12	11	7	7	11	8	9	11	9	7	7	3	7	8	13	17	9	18	28	10	28	28	18	7	12
18	3	4	6	10	7	6	23	16	10	7	2	9	7	10	15	9	19	18	34	37	27	41	34	27	16
19	34	35	23	20	20	16	22	29	21	5	22	9	7	6	9	13	15	10	13	24	14	13	14	13	17
20	18	20	17	11	3	10	14	6	11	8	6	5	5	7	6	7	10	7	11	12	11	17	11	9	10
21	14	M	18	22	25	18	18	20	11	11	4	8	5	5	9	7	9	9	13	16	15	9	8	22	13
22	6	6	8	12	11	9	13	10	9	5	4	5	3	5	5	10	15	16	10	13	15	18	10	11	10
23	7	8	16	11	13	10	14	14	17	12	M	10	10	6	7	10	19	12	12	8	18	16	30	63	15
24	50	46	43	46	52	54	46	39	59	63	58	31	19	6	17	43	36	49	69	67	42	28	24	24	42
25	24	21	7	6	6	6	7	8	8	9	12	16	13	11	11	9	11	10	10	9	9	9	10	8	10
26	8	9	10	8	7	7	12	16	13	12	8	6	6	6	6	6	7	8	8	9	7	5	5	6	8
27	5	6	6	6	7	7	8	8	8	7	7	6	6	5	4	6	5	6	7	5	7	5	8	7	6
28	5	6	4	6	6	4	5	6	4	4	6	3	5	6	5	5	4	4	5	6	5	5	4	4	5
29	3	3	5	4	3	5	7	7	10	11	12	11	14	5	5	6	5	5	4	5	8	9	5	4	7
30	2	2	4	2	3	2	4	4	5	4	4	4	4	4	4	4	3	2	2	1	1	2	1	3	3
31	2	2	2	2	4	6	4	5	5	4	3	3	4	4	4	3	4	5	4	4	3	4	5	5	4

MONTHLY STATISTICS:

GEOM	ARITH-----PERCENTILES-----										RANGE-----				STN GEOM	PERCENT	NO. OF TIMES	
MEAN	MEDIAN	MEAN	50	90	95	98	99	1-HR		24-HR		DEVIATION	VALID DATA	1-HR	24-HR			
10	8	14	8	29	46	68	91	1	-	119	3	-	51	2	100	0	0	

- NOTES: 1. FLAGS FOR INVALID DATA :
- D: DYNAMIC CALIBRATION
 - T: TELEMETRY/DATALOGGR FAULT
 - M: MAINTENANCE OR ANALYZER FAULT
 - P: POWER FAILURE

THE HONGKONG ELECTRIC COMPANY, LTD.
AIR QUALITY DATA MONTHLY TIME SERIES REPORT

STATION : VICTORIA ROAD SUBSTATION
POLLUTANT : SULPHUR DIOXIDE

MONTH: MAY

YEAR : 2025
UNIT : MICROGRAMS/CUBIC METER

DAY	1	2	3	4	5	6	7	8	9	10	11	12	13	14	15	16	17	18	19	20	21	22	23	24	MEAN	
1	2	2	1	2	2	2	2	2	3	3	2	2	2	2	2	2	2	2	2	2	2	2	2	2	2	
2	2	2	2	2	2	2	2	4	4	5	5	5	3	2	2	2	2	2	2	2	2	2	2	2	3	
3	2	2	2	2	2	2	2	2	2	2	2	2	3	2	2	2	2	2	2	2	2	2	2	2	2	
4	2	2	2	2	2	2	2	2	2	2	2	2	2	3	2	2	2	3	2	3	2	2	2	2	2	
5	2	2	2	2	2	2	2	2	2	2	2	2	2	2	2	1	2	2	2	2	2	2	3	2	2	
6	2	2	2	2	2	2	2	2	2	2	2	2	2	2	2	2	2	3	2	2	3	2	2	2	2	
7	2	2	2	2	2	2	2	2	2	3	3	2	3	3	3	2	2	2	2	2	2	2	2	2	2	
8	2	2	2	2	2	2	2	2	2	2	2	2	2	2	2	2	2	2	2	2	2	2	2	2	2	
9	2	2	2	2	2	3	3	3	3	3	3	3	3	3	4	4	4	4	4	4	5	5	5	5	3	
10	5	5	5	5	5	5	5	6	7	8	7	7	7	7	6	6	6	7	7	7	7	7	6	7	6	
11	7	7	7	7	7	7	7	7	7	7	7	8	8	8	8	8	8	9	8	9	9	9	9	9	8	
12	9	9	9	9	9	9	9	10	10	10	10	10	10	11	11	11	11	11	11	11	11	11	11	11	10	
13	11	11	11	11	11	11	11	11	11	11	11	11	12	12	12	12	12	12	12	12	12	12	12	12	12	
14	12	12	12	12	12	12	12	12	12	12	12	13	13	13	13	13	13	13	13	13	12	13	13	13	13	
15	13	13	13	13	13	13	13	13	13	13	13	14	13	13	13	14	14	14	14	14	14	14	14	14	13	
16	14	14	14	14	14	14	14	14	15	15	15	15	14	15	15	14	14	14	14	14	14	14	14	15	14	
17	14	14	15	14	15	14	15	15	15	15	15	15	15	15	15	15	14	15	15	15	15	15	15	15	15	
18	15	15	15	15	15	15	15	15	15	15	16	16	17	18	16	16	16	16	16	16	15	16	16	16	16	
19	16	17	17	17	17	17	16	17	17	17	17	18	17	18	17	18	17	17	17	18	18	18	18	18	17	
20	18	18	17	19	18	18	19	18	18	19	19	19	18	19	19	19	19	19	19	19	19	19	20	20	19	
21	19	20	20	20	20	20	20	20	21	21	21	21	20	21	21	21	21	21	21	21	22	22	21	23	22	21
22	22	22	22	23	23	23	23	23	23	23	M	4	2	2	2	2	2	2	3	2	2	3	4	5	11	
23	4	3	4	4	4	4	5	4	5	4	5	5	5	6	6	7	7	7	7	7	7	7	7	9	6	
24	8	8	8	8	8	8	9	9	10	10	9	10	9	10	9	9	10	10	10	10	11	10	11	13	9	
25	11	11	11	12	12	12	12	12	13	13	13	13	13	14	14	14	14	14	15	15	15	15	15	17	13	
26	15	16	16	16	16	16	16	17	17	17	17	18	18	18	18	18	18	19	19	19	19	19	20	22	18	
27	1	1	1	1	2	2	2	2	2	3	3	3	3	4	4	4	4	4	4	5	5	5	5	7	3	
28	6	6	6	6	6	6	6	6	7	7	7	7	7	7	7	8	8	8	8	9	9	9	9	11	7	
29	1	2	2	2	2	3	2	3	3	4	4	4	5	4	5	5	5	5	5	5	5	5	5	7	4	
30	6	6	6	6	6	6	7	7	7	7	7	7	7	8	8	8	8	8	8	8	8	8	9	11	7	
31	9	9	9	9	9	9	9	9	9	10	10	10	10	10	10	10	11	11	11	11	11	11	11	13	10	

MONTHLY STATISTICS:

GEOM	ARITH-----PERCENTILES-----							-----RANGE-----					STN GEOM	PERCENT	NO. OF TIMES		
MEAN	MEDIAN	MEAN	50	90	95	98	99	1-HR		24-HR			DEVIATION	VALID DATA	ABOVE	LIMIT LEVEL	
6	8	9	8	18	19	21	23	1	-	23	2	-	21	2	100	24-HR	0

- NOTES: 1. FLAGS FOR INVALID DATA :
- D: DYNAMIC CALIBRATION
 - T: TELEMETRY/DATALOGGR FAULT
 - M: MAINTENANCE OR ANALYZER FAULT
 - P: POWER FAILURE

THE HONGKONG ELECTRIC COMPANY, LTD.
AIR QUALITY DATA MONTHLY TIME SERIES REPORT

STATION : VICTORIA ROAD SUBSTATION
POLLUTANT : NITROGEN DIOXIDE

MONTH: MAY

YEAR : 2025
UNIT : MICROGRAMS/CUBIC METER

DAY	1	2	3	4	5	6	7	8	9	10	11	12	13	14	15	16	17	18	19	20	21	22	23	24	MEAN
1	4	3	3	4	5	10	10	19	27	30	17	12	9	10	7	17	19	9	10	9	11	10	10	8	11
2	5	7	15	14	14	14	19	26	34	42	55	47	31	17	14	15	14	14	12	10	8	7	6	5	19
3	4	3	3	3	3	2	7	10	12	9	10	13	16	11	16	13	11	14	13	14	15	10	7	7	9
4	4	3	3	3	3	4	8	10	8	7	9	11	7	10	7	11	11	8	7	6	5	4	6	4	7
5	3	3	2	2	3	2	3	4	5	5	6	5	4	5	5	7	6	10	25	15	10	11	11	10	7
6	8	3	3	4	4	4	5	10	11	8	7	7	10	9	8	8	7	12	7	8	6	7	12	8	7
7	5	M	11	12	9	13	12	14	16	17	13	13	14	14	14	12	14	12	8	5	4	4	4	3	11
8	2	2	2	2	2	2	3	5	8	8	8	7	7	9	10	10	11	13	8	5	4	3	3	3	6
9	2	2	2	1	1	2	4	10	10	8	7	9	9	17	19	32	28	34	47	44	39	41	39	35	18
10	35	32	30	24	20	21	22	27	31	35	34	40	41	37	20	9	25	29	31	32	34	23	11	8	27
11	6	5	3	2	3	2	5	5	6	7	7	6	5	6	15	14	19	24	16	15	11	10	8	7	9
12	7	5	4	3	3	2	6	10	10	11	11	10	8	6	6	6	12	13	9	9	6	5	7	5	7
13	4	4	3	3	2	3	4	7	11	9	10	10	9	9	12	13	16	15	13	6	4	4	4	4	7
14	3	2	2	2	2	2	3	7	10	8	8	15	10	10	12	11	12	11	8	4	3	2	3	2	6
15	2	1	2	2	1	2	3	8	13	13	5	4	5	6	7	6	9	10	6	3	3	4	4	3	5
16	2	1	1	1	1	1	4	7	12	10	7	7	4	4	4	8	7	8	10	7	7	6	5	5	5
17	4	4	3	2	2	2	3	6	10	10	8	7	12	11	6	7	4	6	5	7	10	9	5	6	6
18	5	7	7	5	4	3	7	8	7	7	6	6	7	15	10	8	7	5	6	9	6	10	7	10	7
19	8	5	3	3	4	4	7	8	10	7	12	9	4	2	2	5	5	7	8	3	6	7	9	7	6
20	9	8	7	4	3	8	10	9	7	6	5	5	5	7	5	7	10	6	8	8	10	9	8	9	7
21	6	M	6	6	4	5	9	12	11	6	5	8	3	3	3	4	6	6	4	7	8	7	8	7	6
22	7	5	7	4	6	7	12	8	6	4	M	4	7	7	8	8	6	10	6	6	7	7	11	14	7
23	9	4	5	4	5	3	9	9	11	6	8	6	5	3	4	7	7	10	8	6	7	16	20	12	8
24	16	16	17	17	17	17	16	15	22	27	25	30	19	13	17	12	14	28	22	17	17	12	12	13	18
25	13	13	10	8	7	8	5	5	6	5	5	6	8	7	6	6	7	7	6	6	6	5	5	5	7
26	4	3	2	2	2	2	4	8	9	10	10	11	12	17	16	16	14	17	12	9	5	5	6	6	8
27	4	4	2	2	3	4	5	8	10	12	11	11	11	13	14	14	11	15	12	6	6	9	4	5	8
28	3	3	2	2	2	2	3	5	7	9	9	8	7	9	11	12	10	7	5	4	3	4	3	3	6
29	2	2	1	1	1	2	9	15	21	20	29	25	28	24	19	28	24	19	18	11	5	6	3	3	13
30	2	2	2	1	1	1	2	3	6	6	4	4	4	6	6	8	9	5	3	2	2	1	1	1	3
31	1	1	1	1	1	1	2	2	3	3	3	2	3	2	2	2	3	6	4	4	4	3	6	4	3

MONTHLY STATISTICS:

GEOM	ARITH-----PERCENTILES-----										RANGE-----		STN GEOM	PERCENT	NO. OF TIMES		
MEAN	MEDIAN	MEAN	50	90	95	98	99	1-HR	24-HR	DEVIATION	VALID DATA	ABOVE	LIMIT	LEVEL	1-HR	24-HR	
7	7	9	7	17	25	34	40	1	-	55	3	-	27	2	100	0	0

- NOTES: 1. FLAGS FOR INVALID DATA :
- D: DYNAMIC CALIBRATION
 - T: TELEMETRY/DATALOGGR FAULT
 - M: MAINTENANCE OR ANALYZER FAULT
 - P: POWER FAILURE

THE HONGKONG ELECTRIC COMPANY, LTD.
AIR QUALITY DATA MONTHLY TIME SERIES REPORT
MONTH: MAY

STATION : AP LEI CHAU
POLLUTANT : SULPHUR DIOXIDE

YEAR : 2025
UNIT : MICROGRAMS/CUBIC METER

DAY	1	2	3	4	5	6	7	8	9	10	11	12	13	14	15	16	17	18	19	20	21	22	23	24	MEAN	
1	1	1	1	1	1	1	1	1	2	4	2	3	5	3	5	4	2	2	2	2	2	1	2	5	2	
2	3	3	5	4	3	3	4	12	15	12	19	8	3	2	2	2	2	2	4	4	2	2	2	3	5	
3	2	1	1	1	1	1	1	1	1	1	1	1	1	1	3	2	2	2	3	2	1	1	1	3	1	
4	1	1	1	1	1	1	1	1	1	2	2	1	2	3	2	3	2	2	1	1	1	1	2	3	2	
5	2	2	1	1	2	1	2	2	2	1	2	2	2	2	2	2	3	4	5	4	3	3	2	5	2	
6	4	3	2	2	3	3	2	3	3	4	3	2	3	2	2	2	3	3	5	2	5	6	4	3	3	
7	5	9	7	4	4	4	5	4	4	4	3	2	3	3	2	2	2	2	2	2	2	2	1	3	3	
8	2	2	2	2	2	1	2	2	2	2	2	2	2	2	2	2	1	1	1	2	2	1	2	2	2	
9	2	2	2	2	2	2	2	2	2	4	4	2	2	3	4	5	4	4	8	9	6	6	6	8	4	
10	7	6	5	4	3	3	4	11	12	12	11	10	8	6	3	3	5	3	4	5	5	3	2	3	6	
11	2	2	2	1	2	M	2	2	2	2	2	2	2	2	6	2	3	3	2	2	2	2	2	3	2	
12	2	2	2	2	2	2	2	2	2	2	3	3	2	2	2	2	2	2	2	2	2	2	2	3	2	
13	2	2	2	2	2	2	2	2	2	2	2	2	2	2	2	2	2	2	1	1	2	2	2	3	2	
14	2	2	2	1	1	1	1	2	2	2	1	2	2	2	1	1	1	1	1	1	1	1	2	3	2	
15	2	2	2	2	2	2	2	2	2	2	1	2	1	1	2	2	2	1	1	1	2	2	2	2	2	
16	2	2	2	2	2	2	2	2	2	2	2	2	2	2	2	2	2	2	2	3	2	2	29	4	3	
17	2	2	2	2	2	2	2	2	2	4	9	4	4	4	4	4	3	3	3	3	4	4	4	2	4	3
18	3	2	3	3	2	3	6	4	4	5	4	4	3	4	2	3	2	3	4	3	4	4	4	3	3	
19	4	4	3	4	3	3	3	6	4	5	M	4	4	4	3	2	2	2	2	3	3	4	5	5	4	
20	4	4	3	3	2	3	4	3	4	4	3	3	3	3	3	3	4	3	3	3	4	3	3	4	3	
21	3	4	4	4	3	3	4	5	5	4	3	3	3	4	5	3	3	3	3	3	3	3	3	5	4	
22	3	3	4	3	3	3	5	3	4	3	4	4	4	4	3	4	3	4	4	3	3	3	3	6	4	
23	3	3	3	3	3	3	3	3	3	3	3	3	3	3	3	4	3	3	3	3	3	3	5	8	3	
24	4	4	5	4	4	4	4	4	8	6	5	4	3	2	3	3	5	7	4	3	3	2	2	4	4	
25	3	3	3	3	2	3	2	3	2	2	3	3	2	2	2	2	2	2	2	2	2	2	2	4	2	
26	3	2	2	2	3	2	2	3	2	2	3	3	2	2	2	2	2	2	2	2	2	2	2	3	2	
27	3	3	3	2	3	3	3	2	2	2	2	2	3	3	2	2	2	2	2	2	2	2	2	4	2	
28	3	3	3	2	2	2	2	2	2	2	2	2	2	2	2	2	2	2	2	2	2	2	2	3	2	
29	2	2	2	2	2	2	2	2	2	4	3	4	4	3	2	2	2	2	2	2	2	2	2	4	2	
30	2	2	2	2	2	2	2	1	2	2	2	2	2	2	2	2	2	2	2	2	2	2	2	4	2	
31	2	2	2	2	2	2	2	2	2	2	2	2	2	2	2	2	2	2	2	2	2	2	2	3	2	

MONTHLY STATISTICS:

GEOM	ARITH-----PERCENTILES-----							-----RANGE-----				STN GEOM	PERCENT	NO. OF TIMES		
MEAN	MEDIAN	MEAN	50	90	95	98	99	1-HR	24-HR	DEVIATION	VALID DATA	ABOVE	LIMIT LEVEL	24-HR		
2	2	3	2	4	5	8	11	1	-	29	1	-	6	2	100	0

- NOTES: 1. FLAGS FOR INVALID DATA :
- D: DYNAMIC CALIBRATION
 - T: TELEMETRY/DATALOGGR FAULT
 - M: MAINTENANCE OR ANALYZER FAULT
 - P: POWER FAILURE

THE HONGKONG ELECTRIC COMPANY, LTD.
AIR QUALITY DATA MONTHLY TIME SERIES REPORT
MONTH: MAY

STATION : AP LEI CHAU
POLLUTANT : NITROGEN DIOXIDE

YEAR : 2025
UNIT : MICROGRAMS/CUBIC METER

DAY	1	2	3	4	5	6	7	8	9	10	11	12	13	14	15	16	17	18	19	20	21	22	23	24	MEAN
1	4	2	2	2	1	2	10	4	33	41	24	24	28	15	25	32	22	17	27	23	29	17	14	23	18
2	14	35	56	54	44	47	46	54	55	51	60	41	8	6	6	7	7	6	13	13	6	7	4	6	27
3	4	3	3	3	2	2	6	5	3	5	5	7	10	8	24	8	11	10	18	11	9	5	6	10	7
4	3	4	4	4	2	4	2	4	5	9	7	7	5	9	9	16	10	7	10	6	4	4	9	5	6
5	2	5	2	3	6	4	5	6	6	4	5	4	4	3	5	7	15	28	55	27	17	21	12	26	11
6	18	12	10	13	19	12	11	21	17	15	11	9	10	8	5	11	10	13	9	12	9	21	28	14	13
7	16	22	26	20	26	23	21	16	20	22	13	7	9	7	8	5	4	5	4	3	4	2	3	3	12
8	2	4	3	2	2	3	3	3	2	3	3	2	3	3	3	3	3	4	3	3	3	2	3	5	3
9	2	2	2	3	4	3	3	10	5	15	17	13	18	36	46	54	40	64	103	105	97	96	95	95	39
10	91	86	80	75	56	56	55	60	60	71	70	62	49	41	9	9	42	20	66	77	70	40	21	16	53
11	13	12	7	5	5	M	6	8	9	11	10	10	8	5	40	16	30	34	24	22	14	14	10	11	14
12	10	9	8	7	8	9	15	16	14	8	7	5	4	3	3	3	3	4	6	10	6	6	10	6	8
13	5	M	5	4	4	4	6	6	6	8	6	7	5	4	3	4	5	6	8	6	4	3	4	4	5
14	4	3	3	3	3	6	5	9	7	7	2	2	2	2	2	2	2	2	2	2	2	1	3	3	3
15	2	1	2	3	2	3	3	2	2	2	1	1	1	1	1	3	3	2	2	2	3	4	3	3	2
16	2	1	2	2	2	2	3	5	5	4	2	3	2	1	1	2	3	5	11	11	7	9	6	10	4
17	9	6	4	5	6	4	6	2	3	10	20	11	13	15	10	16	15	13	22	20	31	21	6	14	12
18	10	15	12	11	6	15	23	14	7	10	10	10	9	11	8	14	12	14	15	14	15	22	23	13	13
19	22	21	11	11	8	9	12	26	14	12	M	13	9	9	4	6	6	10	14	10	14	12	23	11	12
20	15	19	9	6	3	14	12	8	8	9	6	5	4	5	4	5	9	7	13	9	17	12	10	13	9
21	9	13	7	9	11	10	15	16	10	6	5	8	4	8	9	4	5	9	5	9	11	9	6	16	9
22	9	3	13	7	9	11	16	4	11	5	10	9	13	12	9	11	14	13	3	6	12	9	8	14	10
23	5	5	9	4	6	5	10	9	9	9	10	8	10	8	10	13	11	11	13	8	15	21	38	46	12
24	34	31	37	38	39	38	34	30	42	45	44	35	17	12	21	27	37	54	41	34	29	23	20	27	33
25	31	31	23	15	7	6	7	8	7	9	11	12	11	11	10	10	12	15	15	14	12	10	8	9	13
26	8	7	7	6	5	5	10	15	14	15	10	9	7	8	9	7	7	5	6	8	7	7	5	9	8
27	10	M	5	5	6	7	8	8	8	7	5	4	8	7	6	5	6	9	8	9	7	5	4	4	7
28	5	5	4	4	5	5	6	5	5	4	4	3	4	5	4	4	6	5	5	5	6	5	4	4	5
29	3	2	2	3	2	4	13	11	17	35	41	54	40	13	9	13	16	17	11	6	6	5	4	2	14
30	1	1	2	2	2	3	5	6	7	6	6	6	6	3	5	4	4	3	2	1	1	2	2	2	3
31	2	2	2	2	3	4	4	5	5	4	4	4	6	4	4	3	4	11	7	5	7	4	4	6	4

MONTHLY STATISTICS:

GEOM	ARITH-----PERCENTILES-----										RANGE-----			STN GEOM	PERCENT	NO. OF TIMES	
MEAN	MEDIAN	MEAN	50	90	95	98	99	1-HR		24-HR		DEVIATION	VALID DATA	1-HR	24-HR	ABOVE	LIMIT LEVEL
8	8	13	8	29	45	64	84	1	-	105	2	-	53	3	99	0	0

- NOTES: 1. FLAGS FOR INVALID DATA :
- D: DYNAMIC CALIBRATION
 - T: TELEMETRY/DATALOGGR FAULT
 - M: MAINTENANCE OR ANALYZER FAULT
 - P: POWER FAILURE

THE HONGKONG ELECTRIC COMPANY, LTD.
AIR QUALITY DATA MONTHLY TIME SERIES REPORT
MONTH: MAY

STATION : CHEUNG CHAU
POLLUTANT : SULPHUR DIOXIDE

YEAR : 2025
UNIT : MICROGRAMS/CUBIC METER

DAY	1	2	3	4	5	6	7	8	9	10	11	12	13	14	15	16	17	18	19	20	21	22	23	24	MEAN	
1	4	4	3	4	5	5	5	5	5	4	4	5	4	4	5	5	5	5	5	5	4	4	4	4	6	5
2	5	4	4	4	5	6	6	6	6	7	7	7	7	7	6	6	6	5	6	6	5	5	5	5	6	6
3	4	4	4	4	4	4	4	4	4	4	4	4	6	7	4	6	7	5	5	5	5	5	5	5	6	5
4	5	5	5	4	5	5	4	6	7	6	6	6	5	4	4	4	4	4	4	4	4	5	4	4	4	5
5	4	4	5	4	4	5	5	6	6	6	4	6	6	5	6	4	4	4	4	4	4	4	4	4	5	5
6	3	4	4	4	4	4	4	4	5	5	5	4	4	4	4	4	4	4	4	4	4	4	4	5	4	4
7	4	4	4	4	4	4	4	4	4	4	4	4	5	6	6	6	4	4	4	4	4	4	4	4	6	4
8	4	4	4	4	4	4	4	4	4	4	4	4	4	4	4	4	4	4	3	4	4	4	4	4	M	4
9	5	5	4	4	4	5	4	5	6	6	5	4	4	4	4	5	4	5	5	5	5	6	6	8	5	
10	6	6	5	6	7	6	6	6	6	7	6	6	6	6	6	6	5	6	5	5	5	5	5	5	6	6
11	5	4	4	4	4	4	5	5	5	5	5	5	5	5	5	5	5	5	5	5	6	5	6	7	5	
12	6	6	5	5	5	4	5	5	6	6	6	5	5	5	5	5	5	5	5	5	5	4	5	6	5	5
13	4	5	5	4	4	4	4	5	5	5	5	6	5	4	4	4	5	5	4	5	4	4	4	4	6	5
14	4	4	4	4	M	M	M	M	M	M	M	M	M	M	M	M	M	M	M	M	M	M	M	M	M	
15	M	M	M	M	M	M	M	M	M	M	M	M	M	M	M	M	M	M	M	M	M	M	M	M	M	
16	M	M	M	M	M	M	M	M	M	M	M	M	M	M	M	M	M	M	M	M	M	M	M	M	M	
17	M	M	M	M	M	M	M	M	M	M	M	M	M	M	M	M	M	M	M	M	M	M	M	M	M	
18	M	M	M	M	M	M	M	M	M	M	M	M	M	M	M	M	M	M	M	M	M	M	M	M	M	
19	M	M	M	M	M	M	M	M	M	M	M	M	M	M	M	M	M	M	M	M	M	M	M	M	M	
20	M	M	M	M	M	M	M	M	M	M	M	1	0	0	0	0	0	0	0	0	0	0	0	0	8	
21	2	1	1	1	0	0	0	1	0	0	0	0	0	0	0	0	0	0	0	0	0	0	1	7	1	
22	1	1	1	0	0	0	0	0	0	0	0	0	0	0	0	0	0	0	0	0	0	0	0	0	6	0
23	1	1	1	1	1	1	1	0	0	0	0	0	0	0	0	0	0	0	1	0	0	0	0	2	0	
24	1	0	1	1	1	1	1	0	0	0	0	0	0	0	0	0	0	0	0	0	0	0	0	3	0	
25	1	1	1	1	1	1	1	1	1	2	2	1	1	1	1	0	0	1	1	0	0	0	1	3	1	
26	1	1	2	3	2	1	1	1	1	1	1	1	2	1	3	2	2	1	1	0	1	1	1	2	1	
27	1	1	1	1	0	1	1	1	3	2	1	1	1	1	1	1	1	1	1	0	1	1	0	2	1	
28	1	1	1	1	1	1	1	0	0	0	0	0	0	0	0	0	1	0	0	1	0	0	0	2	0	
29	1	0	0	0	0	0	0	1	1	1	1	1	0	0	0	0	0	0	1	0	0	0	0	2	0	
30	0	0	0	0	0	0	0	0	1	1	2	2	2	4	3	3	4	3	5	3	2	1	2	3	2	
31	1	1	1	1	1	0	1	1	1	1	1	2	1	4	4	3	3	2	1	1	1	1	1	3	2	

MONTHLY STATISTICS:

ARITH-----PERCENTILES-----													RANGE-----		STN GEOM	PERCENT	NO. OF TIMES
MEAN	MEDIAN	MEAN	50	90	95	98	99	1-HR		24-HR		DEVIATION	VALID DATA	ABOVE	LIMIT LEVEL		
3	4	3	4	6	6	7	7	0	-	8	0	-	6	2	80	0	

- NOTES: 1. FLAGS FOR INVALID DATA :
- D: DYNAMIC CALIBRATION
 - T: TELEMETRY/DATALOGGR FAULT
 - M: MAINTENANCE OR ANALYZER FAULT
 - P: POWER FAILURE

THE HONGKONG ELECTRIC COMPANY, LTD.
AIR QUALITY DATA MONTHLY TIME SERIES REPORT
MONTH: MAY

STATION : CHEUNG CHAU
POLLUTANT : NITROGEN DIOXIDE

YEAR : 2025
UNIT : MICROGRAMS/CUBIC METER

DAY	1	2	3	4	5	6	7	8	9	10	11	12	13	14	15	16	17	18	19	20	21	22	23	24	MEAN
1	15	35	31	32	41	60	81	70	45	11	19	53	10	9	15	18	26	33	29	35	26	50	45	45	35
2	48	47	23	55	46	59	61	60	33	49	40	33	30	36	25	20	23	17	27	23	13	14	14	10	34
3	9	9	8	13	10	42	43	23	12	7	10	9	21	15	10	24	46	26	26	24	29	42	52	59	24
4	55	41	33	32	36	57	22	41	32	31	26	31	24	14	9	10	11	15	18	28	22	39	15	15	27
5	30	20	37	15	25	20	21	33	27	20	11	21	18	13	18	6	7	8	6	8	10	11	15	11	17
6	19	32	15	15	14	16	21	22	20	14	7	6	7	10	10	11	12	9	11	9	16	10	15	18	14
7	15	M	20	14	16	17	12	17	16	21	14	18	20	27	27	17	13	19	14	13	13	12	7	8	16
8	8	10	10	8	8	9	10	56	45	25	20	17	16	14	14	14	13	15	18	16	18	17	20	M	17
9	36	33	16	28	20	34	23	28	24	20	17	28	41	42	46	46	41	88	100	105	87	105	111	99	51
10	89	80	51	85	96	83	70	62	54	83	59	46	37	42	35	18	15	21	71	110	56	38	27	20	56
11	20	14	9	9	11	12	17	20	18	19	23	25	20	18	12	11	9	13	13	15	43	28	42	58	20
12	46	52	25	16	44	43	50	53	37	46	41	13	8	8	8	6	6	8	11	14	12	11	12	12	24
13	10	11	11	10	9	12	9	19	16	14	36	14	7	4	4	4	4	7	6	11	8	6	8	12	11
14	12	7	9	10	M	M	M	M	M	M	M	M	M	M	M	M	M	M	M	M	M	M	M	M	M
15	M	M	M	M	M	M	M	M	M	M	M	M	M	M	M	M	M	M	M	M	M	M	M	M	M
16	M	M	M	M	M	M	M	M	M	M	M	M	M	M	M	M	M	M	M	M	M	M	M	M	M
17	M	M	M	M	M	M	M	M	M	M	M	M	M	M	M	M	M	M	M	M	M	M	M	M	M
18	M	M	M	M	M	M	M	M	M	M	M	M	M	M	M	M	M	M	M	M	M	M	M	M	M
19	M	M	M	M	M	M	M	M	M	M	M	M	M	M	M	M	M	M	M	M	M	M	M	M	M
20	M	M	M	M	M	M	M	M	M	M	M	14	11	8	9	8	6	9	10	13	10	10	14	12	
21	16	M	13	13	13	13	11	12	8	5	6	6	150	41	13	9	9	8	9	10	8	10	9	5	17
22	8	7	9	8	7	6	4	6	4	6	3	3	3	3	4	5	3	27	17	7	7	8	6	13	7
23	9	5	6	6	12	12	8	6	6	4	3	5	3	3	3	2	5	4	5	5	21	9	11	15	7
24	31	41	52	53	54	50	41	40	34	41	38	36	16	12	10	16	36	53	50	47	31	26	29	30	36
25	18	17	15	16	23	26	30	30	26	35	47	45	23	25	27	25	21	28	26	24	19	35	28	31	27
26	28	19	25	24	22	27	33	27	41	29	23	21	12	13	16	11	10	7	10	8	14	12	11	11	19
27	13	12	10	9	9	9	10	9	14	16	11	10	8	6	5	5	8	18	14	10	12	11	7	16	11
28	9	12	14	13	14	15	9	13	13	6	5	4	3	6	4	5	10	12	10	10	13	12	8	11	10
29	6	8	6	11	10	7	30	52	50	53	71	32	13	19	11	14	10	34	56	51	19	8	9	8	25
30	5	4	6	10	8	11	7	9	10	9	10	9	6	12	12	9	12	9	15	14	11	8	11	6	9
31	7	7	5	6	4	8	9	8	8	7	5	7	6	10	11	10	9	11	29	36	16	22	14	25	12

MONTHLY STATISTICS:

GEOM	ARITH-----PERCENTILES-----								RANGE-----				STN GEOM	PERCENT	NO. OF TIMES		
MEAN	MEDIAN	MEAN	50	90	95	98	99	1-HR	24-HR	DEVIATION	VALID DATA	ABOVE	LIMIT	LEVEL			
16	14	22	14	46	56	83	99	2	-	150	7	-	56	2	79	1-HR	24-HR
																0	0

NOTES: 1. FLAGS FOR INVALID DATA :
D: DYNAMIC CALIBRATION
T: TELEMETRY/DATALOGGR FAULT
M: MAINTENANCE OR ANALYZER FAULT
P: POWER FAILURE

THE HONGKONG ELECTRIC COMPANY, LTD.
AIR QUALITY DATA MONTHLY TIME SERIES REPORT
MONTH: JUNE

STATION : VICTORIA PEAK
POLLUTANT : SULPHUR DIOXIDE

YEAR : 2025
UNIT : MICROGRAMS/CUBIC METER

DAY	1	2	3	4	5	6	7	8	9	10	11	12	13	14	15	16	17	18	19	20	21	22	23	24	MEAN	
1	2	2	2	2	2	2	2	2	2	2	2	2	2	2	3	3	3	2	2	2	2	2	2	2	2	2
2	2	2	2	2	2	2	2	2	2	2	2	2	2	2	2	2	3	2	2	2	2	2	2	2	2	2
3	2	2	2	2	2	2	2	2	2	2	2	2	2	3	4	4	4	4	3	3	3	2	2	2	2	3
4	2	2	2	2	1	2	2	2	2	2	2	2	2	2	2	1	2	2	1	1	1	2	1	1	1	2
5	1	2	1	1	1	1	1	1	2	2	2	2	2	2	2	2	2	2	2	2	2	3	3	2	2	2
6	2	2	2	2	2	2	2	2	2	2	2	2	2	2	3	8	8	8	6	15	14	4	3	3	4	4
7	1	2	2	2	2	2	2	2	2	2	3	4	39	50	59	18	4	4	3	2	2	3	2	2	2	9
8	2	2	2	2	2	2	2	2	2	2	3	3	2	3	3	5	5	3	2	2	2	2	2	2	2	2
9	2	2	2	2	2	2	2	2	2	2	3	2	2	11	21	18	40	12	5	3	2	2	2	2	2	6
10	2	2	2	2	2	1	1	2	2	2	2	2	3	3	3	3	3	3	2	2	2	2	2	2	2	2
11	2	2	2	2	2	2	2	2	2	2	2	2	2	2	2	2	2	2	2	2	2	2	2	2	2	2
12	2	2	2	2	2	2	2	2	2	2	2	2	2	2	2	2	1	2	2	2	2	2	2	2	2	2
13	2	2	2	2	2	2	2	2	2	2	2	2	2	2	3	2	2	2	2	2	2	2	2	2	2	2
14	1	2	2	1	2	2	2	2	2	2	2	2	2	2	2	2	2	2	2	2	2	2	2	2	2	2
15	2	2	2	2	2	2	2	2	2	2	2	2	2	2	2	3	2	2	2	2	2	2	2	2	2	2
16	2	2	2	2	2	2	2	2	1	2	2	2	1	1	2	2	2	2	2	2	2	2	2	2	2	2
17	2	2	2	2	2	2	2	2	2	2	2	2	2	2	2	2	2	2	2	2	2	2	2	1	2	2
18	2	2	2	2	2	2	2	2	2	2	2	2	2	2	2	2	2	2	2	2	2	2	2	2	2	2
19	2	2	2	2	2	2	2	2	2	2	2	2	2	2	2	2	2	2	1	2	2	2	2	2	2	2
20	2	2	2	2	2	2	2	2	2	2	2	2	2	2	2	2	1	2	2	2	2	2	2	2	2	2
21	2	2	2	2	2	2	2	2	2	2	3	2	2	2	3	3	3	2	2	2	2	2	2	2	2	2
22	2	2	2	2	2	2	2	2	2	2	3	2	2	3	2	3	2	2	3	2	2	2	2	2	2	2
23	2	2	2	2	2	2	2	2	2	2	2	2	2	3	3	3	4	3	3	3	2	3	3	2	2	2
24	2	2	2	2	2	2	3	3	3	3	2	2	3	3	4	4	4	4	3	3	3	3	3	3	3	3
25	3	3	2	3	2	2	2	3	3	3	3	3	3	3	3	3	3	3	3	3	2	3	3	3	3	3
26	3	3	3	2	3	2	2	2	3	2	3	2	3	3	3	3	3	2	3	2	2	2	2	2	2	3
27	2	2	2	2	2	2	2	2	3	2	2	2	3	2	2	3	2	2	2	2	2	2	2	2	2	2
28	2	2	2	2	2	2	2	2	2	2	3	3	2	3	3	3	3	3	3	3	2	2	3	2	2	2
29	2	3	3	2	3	2	2	2	2	3	2	3	3	3	3	3	2	2	2	3	3	3	3	3	2	3
30	2	2	2	2	2	3	2	2	2	2	2	3	3	3	2	3	3	2	3	3	3	2	3	3	2	2

MONTHLY STATISTICS:

GEOM	ARITH-----PERCENTILES-----							-----RANGE-----				STN GEOM	PERCENT	NO. OF TIMES		
MEAN	MEDIAN	MEAN	50	90	95	98	99	1-HR	24-HR	DEVIATION	VALID DATA	ABOVE	LIMIT LEVEL			
2	2	3	2	3	3	6	15	1	-	59	2	-	9	1	100	0

- NOTES: 1. FLAGS FOR INVALID DATA :
- D: DYNAMIC CALIBRATION
 - T: TELEMETRY/DATALOGGR FAULT
 - M: MAINTENANCE OR ANALYZER FAULT
 - P: POWER FAILURE

THE HONGKONG ELECTRIC COMPANY, LTD.
AIR QUALITY DATA MONTHLY TIME SERIES REPORT
MONTH: JUNE

STATION : VICTORIA PEAK
POLLUTANT : NITROGEN DIOXIDE

YEAR : 2025
UNIT : MICROGRAMS/CUBIC METER

DAY	1	2	3	4	5	6	7	8	9	10	11	12	13	14	15	16	17	18	19	20	21	22	23	24	MEAN
1	3	2	0	0	1	1	2	8	2	10	5	5	5	6	7	8	17	16	14	10	6	9	4	3	6
2	3	3	4	3	4	3	8	9	9	7	7	7	8	7	11	9	8	13	7	6	10	10	8	3	7
3	4	4	1	1	0	1	4	5	13	10	19	12	13	24	28	40	52	61	49	48	37	34	38	27	22
4	22	M	6	2	2	2	2	8	9	7	8	13	9	17	11	16	16	23	12	4	2	2	8	2	9
5	2	1	0	0	0	1	2	6	9	12	14	13	17	16	17	19	17	6	4	2	1	0	0	1	7
6	0	0	0	0	0	0	0	1	3	5	7	3	1	2	4	7	10	19	18	8	4	1	1	1	4
7	1	0	0	0	0	0	0	0	0	1	2	5	5	10	21	14	10	12	11	5	3	4	1	0	4
8	0	0	0	0	0	0	0	1	0	0	0	0	0	1	2	8	14	10	7	4	2	3	0	1	2
9	1	2	2	0	1	0	0	0	1	3	2	1	11	15	12	20	17	13	6	6	5	0	0	1	5
10	0	0	0	0	0	0	0	0	1	2	1	3	5	4	4	3	5	3	3	1	0	0	0	0	1
11	0	0	0	0	0	0	0	0	0	0	0	0	0	0	0	1	1	0	0	0	0	0	0	0	0
12	0	0	0	0	0	0	0	0	0	0	0	1	1	0	1	0	0	1	0	0	0	0	0	0	0
13	0	0	0	0	0	0	0	0	1	2	1	0	0	0	2	0	0	1	0	0	0	0	0	0	0
14	0	0	0	1	0	0	0	0	0	0	0	0	0	0	0	0	0	0	0	0	0	0	0	0	0
15	0	0	0	0	0	0	0	0	0	0	0	0	0	0	1	2	2	5	5	4	3	0	2	0	1
16	0	0	0	0	0	0	0	0	0	0	0	0	1	0	0	1	0	0	0	0	0	1	0	1	0
17	0	0	0	0	0	0	1	0	1	0	0	0	0	0	0	1	1	1	1	0	0	0	0	0	0
18	1	M	0	0	1	1	0	1	1	0	0	0	0	0	0	0	1	1	3	0	0	0	0	0	0
19	0	0	0	0	0	0	0	1	2	0	0	0	0	0	1	3	3	1	0	0	0	0	0	0	0
20	0	0	0	0	0	2	2	1	0	0	0	0	0	0	1	0	1	1	1	0	0	1	3	1	1
21	0	2	0	0	0	0	1	0	0	0	0	0	0	0	0	0	1	0	1	0	1	1	0	0	0
22	0	0	0	0	0	0	0	0	0	0	0	0	0	0	3	2	0	1	1	1	0	2	1	0	0
23	0	0	1	0	0	0	0	1	1	1	1	1	1	1	1	3	6	7	7	4	2	1	1	0	2
24	0	0	0	0	0	0	0	2	0	0	0	0	0	3	9	11	7	14	8	4	4	5	5	4	3
25	2	1	1	4	1	0	0	0	0	1	0	1	4	3	6	3	1	1	1	1	0	0	0	0	1
26	0	0	0	0	0	0	0	0	0	1	1	1	1	0	3	1	1	0	0	0	0	0	1	0	0
27	0	0	0	0	0	0	1	2	2	1	1	0	1	2	2	2	2	1	0	0	0	0	0	0	1
28	0	0	0	0	0	0	0	0	0	2	1	1	3	2	1	2	4	9	9	4	3	2	2	4	2
29	2	1	2	1	1	1	0	2	1	2	1	1	4	1	0	1	1	1	1	1	1	1	0	0	1
30	0	0	0	0	0	0	0	0	0	0	0	0	0	0	0	3	6	2	0	0	1	0	0	0	1

MONTHLY STATISTICS:

GEOM		ARITH-----PERCENTILES-----							-----RANGE-----				STN GEOM	PERCENT	NO. OF TIMES		
MEAN	MEDIAN	MEAN	50	90	95	98	99	1-HR		24-HR	DEVIATION	VALID DATA	1-HR	24-HR	ABOVE	LIMIT LEVEL	
3	0	3	0	8	13	20	33	0	-	61	0	-	22	3	100	0	0

- NOTES: 1. FLAGS FOR INVALID DATA :
- D: DYNAMIC CALIBRATION
 - T: TELEMETRY/DATALOGGR FAULT
 - M: MAINTENANCE OR ANALYZER FAULT
 - P: POWER FAILURE

THE HONGKONG ELECTRIC COMPANY, LTD.
AIR QUALITY DATA MONTHLY TIME SERIES REPORT

STATION : CHUNG HOM KOK ZONE SUBSTATION
POLLUTANT : SULPHUR DIOXIDE

MONTH: JUNE

YEAR : 2025

UNIT : MICROGRAMS/CUBIC METER

DAY	1	2	3	4	5	6	7	8	9	10	11	12	13	14	15	16	17	18	19	20	21	22	23	24	MEAN
1	3	2	2	2	2	2	2	2	2	2	2	1	1	2	1	1	1	2	2	2	2	2	2	7	2
2	3	3	3	3	3	2	2	2	2	2	2	2	2	2	2	2	2	2	2	2	3	1	2	5	2
3	3	3	3	3	3	2	3	3	3	4	3	4	2	3	3	2	2	2	3	3	3	3	3	8	3
4	4	3	2	2	2	2	2	2	2	2	2	2	2	2	2	2	2	2	2	2	2	2	3	8	2
5	3	2	2	2	2	2	2	1	1	2	2	2	2	2	2	2	2	2	2	2	3	3	3	8	2
6	3	3	2	2	2	2	2	2	2	2	2	1	2	2	2	2	3	2	2	2	2	2	2	6	2
7	6	4	3	2	3	3	3	3	2	4	3	2	2	2	2	2	2	2	2	1	2	1	2	7	3
8	3	2	2	2	2	M	M	M	M	M	M	M	M	M	M	M	M	M	M	M	M	M	M	M	M
9	M	M	M	M	M	M	M	M	M	M	M	M	M	M	M	M	M	M	M	M	M	M	M	M	M
10	M	M	M	M	M	M	M	M	M	M	M	M	M	M	M	M	M	3	2	2	2	2	2	7	
11	3	3	2	2	2	2	2	2	2	2	2	2	2	2	2	2	2	2	2	2	2	1	2	6	2
12	3	2	2	2	2	2	2	2	2	2	2	2	2	2	2	2	2	2	2	2	2	2	2	7	2
13	3	3	2	2	2	2	2	2	2	2	2	2	2	2	2	2	2	2	1	1	2	2	2	8	2
14	3	3	2	2	2	2	2	2	2	2	2	2	2	2	2	2	2	2	2	2	2	2	2	7	2
15	3	2	2	2	2	2	2	2	2	2	2	2	2	2	2	2	2	2	2	2	2	2	2	8	2
16	3	3	2	2	2	2	2	2	1	2	2	2	2	2	2	2	2	2	2	2	2	2	2	7	2
17	3	3	3	2	2	2	2	2	2	2	2	2	2	2	2	2	2	2	2	2	2	2	2	8	2
18	3	3	2	2	2	2	2	2	2	2	2	2	2	2	2	2	2	2	2	2	2	2	3	9	2
19	3	3	3	2	2	2	2	2	2	2	2	2	2	2	2	2	2	2	2	2	2	2	2	8	2
20	3	3	2	2	2	2	2	2	2	2	2	2	2	2	2	2	2	2	2	2	2	3	3	8	2
21	4	3	3	2	3	2	2	2	2	2	2	2	2	2	2	2	2	2	2	2	2	2	2	9	3
22	4	3	2	2	2	2	3	3	2	2	2	2	2	2	2	2	2	2	2	2	2	2	2	6	2
23	3	3	2	2	2	2	2	2	2	2	2	2	2	2	2	2	2	2	2	2	2	2	2	8	2
24	3	3	2	2	2	2	2	2	3	2	2	2	M	5	3	3	2	2	2	2	2	1	0	9	3
25	4	3	3	2	2	2	2	2	2	2	2	2	2	2	2	2	2	2	1	2	2	2	2	8	2
26	3	3	3	2	2	2	2	2	2	2	2	2	2	2	2	2	2	2	2	2	2	2	2	9	2
27	3	3	2	2	2	2	2	2	2	2	2	2	2	2	2	2	2	2	2	2	2	2	2	9	2
28	4	3	3	3	2	2	2	2	2	2	2	2	2	2	2	2	2	2	2	2	2	2	2	8	2
29	4	3	3	3	3	2	2	3	2	2	2	2	2	2	2	2	2	2	2	2	2	2	2	9	3
30	4	3	3	3	2	2	2	2	2	2	2	2	2	2	2	2	2	2	2	2	2	2	2	8	2

MONTHLY STATISTICS:

GEOM	ARITH-----PERCENTILES-----							-----RANGE-----					STN GEOM	PERCENT	NO. OF TIMES		
MEAN	MEDIAN	MEAN	50	90	95	98	99	1-HR		24-HR			DEVIATION	VALID DATA	ABOVE	LIMIT LEVEL	
2	2	2	2	3	4	8	8	0	-	9	2	-	3	1	92	0	

NOTES:

1. FLAGS FOR INVALID DATA :
 - D: DYNAMIC CALIBRATION
 - T: TELEMETRY/DATALOGGR FAULT
 - M: MAINTENANCE OR ANALYZER FAULT
 - P: POWER FAILURE

THE HONGKONG ELECTRIC COMPANY, LTD.
AIR QUALITY DATA MONTHLY TIME SERIES REPORT

STATION : CHUNG HOM KOK ZONE SUBSTATION
POLLUTANT : NITROGEN DIOXIDE

MONTH: JUNE

YEAR : 2025

UNIT : MICROGRAMS/CUBIC METER

DAY	1	2	3	4	5	6	7	8	9	10	11	12	13	14	15	16	17	18	19	20	21	22	23	24	MEAN
1	6	5	5	4	2	3	10	14	5	6	5	5	6	5	5	5	6	11	9	9	12	15	8	8	7
2	13	32	21	39	25	16	29	20	15	12	12	18	14	14	10	13	11	14	14	20	25	24	15	21	19
3	19	16	22	34	17	23	33	20	33	44	49	52	46	52	77	63	32	35	63	72	83	77	72	83	47
4	56	M	11	7	5	4	5	6	5	5	8	5	5	5	4	6	7	12	15	7	5	5	5	3	9
5	3	3	1	2	2	2	4	5	5	7	7	8	5	3	4	6	6	6	8	6	5	6	11	14	5
6	5	3	2	3	4	4	4	7	6	4	4	5	6	4	3	6	13	12	15	21	22	25	21	19	9
7	76	26	14	6	13	12	18	19	13	21	30	36	15	11	20	12	13	21	18	16	24	14	20	23	20
8	28	21	8	15	17	M	M	M	M	M	M	M	M	M	M	M	M	M	M	M	M	M	M	M	M
9	M	M	M	M	M	M	M	M	M	M	M	M	M	M	M	M	M	M	M	M	M	M	M	M	M
10	M	M	M	M	M	M	M	M	M	M	M	M	M	M	M	M	M	M	4	3	3	3	3	3	6
11	5	7	4	3	3	3	4	3	3	4	4	3	2	3	3	4	3	3	3	3	5	6	6	6	4
12	4	2	2	4	5	6	3	4	4	4	4	3	2	2	3	4	3	3	4	5	6	5	2	6	4
13	3	4	4	4	3	6	8	16	16	12	7	5	9	8	6	10	9	11	12	11	9	10	8	14	9
14	8	4	3	6	4	11	3	6	3	3	5	4	4	4	4	2	3	4	5	2	3	2	5	3	4
15	2	1	3	2	0	0	0	2	4	4	2	2	2	5	9	6	9	16	15	14	18	18	17	17	7
16	14	10	13	9	11	13	9	14	9	8	8	3	4	4	5	7	7	6	13	17	12	22	21	4	10
17	12	10	11	5	6	6	10	11	21	24	5	9	9	6	4	7	8	13	5	11	13	4	2	6	9
18	7	M	6	3	7	6	5	8	6	7	7	5	4	7	6	7	6	5	6	8	9	7	7	8	6
19	4	5	2	5	7	11	11	11	4	7	7	6	7	5	7	5	7	3	5	8	10	4	5	6	6
20	4	3	3	5	5	6	10	9	6	7	6	5	7	7	6	5	17	12	8	11	10	19	20	11	8
21	12	10	8	2	11	8	4	5	4	5	4	5	4	4	6	5	5	13	10	11	10	10	9	9	7
22	21	9	7	8	7	6	9	11	5	7	9	5	6	6	4	8	6	9	12	8	14	15	10	7	9
23	7	11	10	9	8	5	14	16	11	7	7	8	8	5	6	10	8	16	13	16	18	11	15	8	10
24	12	16	12	9	10	6	10	14	11	15	8	12	M	9	6	7	9	11	20	11	9	14	9	8	11
25	12	10	8	10	7	7	7	8	8	5	6	4	5	4	4	3	5	6	8	6	7	5	5	4	6
26	5	3	5	2	3	2	4	11	8	6	8	8	6	3	6	6	2	4	6	7	12	6	6	9	6
27	4	3	5	3	3	6	8	14	14	8	7	6	5	6	10	12	21	8	8	5	5	6	9	6	8
28	4	4	5	4	7	5	6	9	6	6	5	7	9	8	13	10	10	13	13	7	7	8	6	10	8
29	9	9	9	7	6	4	4	9	12	8	4	7	5	6	5	4	5	7	10	17	11	5	4	6	7
30	3	2	3	4	6	3	5	7	8	4	3	3	3	6	3	3	5	7	6	6	11	7	3	2	5

MONTHLY STATISTICS:

GEOM	ARITH-----PERCENTILES-----							-----RANGE-----				STN GEOM	PERCENT	NO. OF TIMES			
MEAN	MEDIAN	MEAN	50	90	95	98	99	1-HR		24-HR	DEVIATION	VALID DATA	1-HR	24-HR			
7	7	10	7	17	23	46	67	0	-	83	4	-	47	2	91	0	0

- NOTES: 1. FLAGS FOR INVALID DATA :
- D: DYNAMIC CALIBRATION
 - T: TELEMETRY/DATALOGGR FAULT
 - M: MAINTENANCE OR ANALYZER FAULT
 - P: POWER FAILURE

THE HONGKONG ELECTRIC COMPANY, LTD.
AIR QUALITY DATA MONTHLY TIME SERIES REPORT
MONTH: JUNE

STATION : VICTORIA ROAD SUBSTATION
POLLUTANT : SULPHUR DIOXIDE

YEAR : 2025
UNIT : MICROGRAMS/CUBIC METER

DAY	1	2	3	4	5	6	7	8	9	10	11	12	13	14	15	16	17	18	19	20	21	22	23	24	MEAN
1	0	0	0	0	0	0	0	0	0	0	0	0	0	0	0	0	0	0	0	0	0	1	1	3	0
2	0	0	0	0	0	0	0	0	0	0	0	0	0	0	0	0	0	0	0	0	0	0	1	2	0
3	1	1	1	1	1	2	2	2	2	3	M	M	0	0	1	1	1	1	1	1	1	1	1	4	1
4	2	2	1	1	1	1	1	1	1	1	1	1	1	1	1	1	1	1	1	1	1	1	1	2	1
5	1	1	1	1	1	1	1	0	1	1	1	1	1	1	1	1	1	1	1	1	1	1	1	2	1
6	1	0	1	1	0	1	1	1	1	1	1	1	1	1	1	1	1	0	0	1	1	1	1	1	1
7	1	0	0	1	1	1	0	1	1	1	1	1	1	1	1	1	1	1	1	1	1	1	1	13	1
8	4	2	2	2	1	1	1	0	1	1	1	1	1	1	1	1	1	1	1	1	1	1	1	4	1
9	2	1	2	1	1	1	1	1	1	1	1	1	1	1	1	1	1	1	1	1	1	1	1	4	1
10	1	1	1	1	1	1	1	1	2	1	1	1	1	1	1	1	1	1	1	1	1	1	1	5	1
11	2	1	1	1	1	1	1	1	1	1	1	1	1	1	1	0	1	1	1	1	1	0	0	5	1
12	2	1	1	1	1	1	0	1	1	1	1	1	0	1	1	1	1	1	1	1	0	0	1	2	1
13	1	1	1	1	1	1	1	0	1	1	0	1	1	1	1	1	1	0	0	1	0	0	0	3	1
14	1	1	1	1	1	0	1	1	0	1	0	0	1	1	1	0	1	1	1	1	0	0	1	5	1
15	2	0	1	1	1	1	1	1	1	1	1	1	1	1	1	1	1	1	1	1	1	1	0	4	1
16	2	1	1	1	1	1	0	1	0	1	1	1	1	1	1	1	1	0	0	0	0	1	0	1	1
17	1	1	1	0	0	1	0	1	0	0	0	0	0	1	0	1	1	1	1	1	0	0	0	4	1
18	1	1	1	1	0	0	1	0	0	0	0	1	0	0	0	0	1	0	0	1	0	0	1	4	1
19	1	1	1	1	1	0	0	1	1	1	0	0	0	0	0	1	0	0	1	0	0	0	0	5	1
20	1	1	1	0	1	1	0	1	1	0	0	1	0	0	0	0	0	0	0	0	0	0	0	3	0
21	0	1	0	0	0	0	0	0	1	1	0	0	0	0	0	0	0	0	0	0	0	0	0	2	0
22	1	0	0	0	0	0	0	0	0	0	0	0	0	0	0	0	0	0	0	0	0	0	0	3	0
23	1	1	1	0	0	0	0	0	0	0	0	1	0	0	0	0	0	0	0	0	0	0	0	5	0
24	1	1	0	0	0	0	0	0	0	0	0	0	0	0	0	0	0	1	0	0	0	0	0	4	0
25	1	0	0	0	0	0	0	0	0	0	0	0	0	0	0	0	0	0	0	0	0	0	0	4	0
26	1	1	0	1	0	0	0	0	0	0	0	0	0	0	0	0	0	0	0	0	0	0	0	3	0
27	1	0	0	0	0	0	0	1	0	0	0	0	0	0	0	0	0	0	0	0	0	0	0	4	0
28	1	1	0	1	0	0	0	0	0	1	0	0	0	0	0	0	0	0	0	0	0	0	0	3	0
29	1	0	0	0	0	0	0	0	0	0	0	0	0	0	0	0	0	0	0	0	0	0	0	4	0
30	1	0	1	0	0	0	0	0	0	0	0	0	0	0	0	0	0	0	0	0	0	0	0	0	0

MONTHLY STATISTICS:

GEOM	ARITH-----PERCENTILES-----										RANGE-----		STN GEOM	PERCENT	NO. OF TIMES	
MEAN	MEDIAN	MEAN	50	90	95	98	99	1-HR		24-HR		DEVIATION	VALID DATA	ABOVE LIMIT LEVEL		
1	1	1	1	1	2	4	4	0	-	13	0	-	1	1	100	0

- NOTES: 1. FLAGS FOR INVALID DATA :
- D: DYNAMIC CALIBRATION
 - T: TELEMETRY/DATALOGGR FAULT
 - M: MAINTENANCE OR ANALYZER FAULT
 - P: POWER FAILURE

THE HONGKONG ELECTRIC COMPANY, LTD.
AIR QUALITY DATA MONTHLY TIME SERIES REPORT
MONTH: JUNE

STATION : VICTORIA ROAD SUBSTATION
POLLUTANT : NITROGEN DIOXIDE

YEAR : 2025
UNIT : MICROGRAMS/CUBIC METER

DAY	1	2	3	4	5	6	7	8	9	10	11	12	13	14	15	16	17	18	19	20	21	22	23	24	MEAN
1	3	5	8	9	6	8	15	9	14	15	6	6	6	5	6	5	5	7	6	5	5	6	6	7	7
2	10	10	10	5	5	6	11	15	12	12	10	8	9	8	10	9	7	8	6	8	10	9	10	6	9
3	6	8	7	4	2	4	11	8	14	15	24	25	24	35	46	55	64	51	47	45	45	51	38	43	28
4	34	M	13	7	5	5	6	12	15	16	14	14	14	16	14	22	16	19	37	12	7	7	8	7	14
5	5	4	4	4	4	3	5	9	10	10	11	16	12	16	11	11	12	17	13	12	11	7	6	6	9
6	4	2	1	1	3	7	14	16	22	25	14	8	6	20	32	27	33	26	14	20	16	16	15	20	15
7	17	9	9	5	4	5	6	5	6	19	22	23	15	12	13	7	9	5	6	5	6	5	8	6	9
8	6	5	3	6	6	6	4	7	4	4	7	9	5	6	6	12	4	5	9	11	9	11	5	7	7
9	6	7	8	5	4	3	7	7	6	8	8	4	16	17	9	14	17	10	5	6	17	9	7	8	9
10	5	2	2	3	4	5	7	10	14	14	9	8	5	4	7	9	9	10	6	4	3	3	2	13	7
11	4	7	2	1	1	0	1	2	3	4	6	5	5	5	6	5	5	4	2	2	1	2	1	7	3
12	3	1	0	2	1	2	4	5	6	4	4	4	3	6	5	6	7	8	6	4	3	2	0	5	4
13	4	2	2	2	2	2	6	9	13	14	12	9	8	9	13	14	13	12	8	8	6	5	10	6	8
14	4	5	5	3	5	3	3	3	4	6	4	5	3	4	3	3	3	4	3	4	4	3	1	2	4
15	1	1	0	1	0	0	1	3	2	2	2	1	2	10	14	15	11	17	13	12	12	6	7	8	6
16	7	6	6	4	3	4	9	7	8	6	4	5	8	3	6	6	6	6	7	8	7	4	5	11	6
17	8	5	5	7	5	4	11	14	15	13	13	11	12	7	7	15	16	11	8	7	8	5	7	9	9
18	10	M	8	7	7	10	9	8	9	9	7	7	5	9	10	12	12	12	10	10	9	10	8	9	9
19	6	5	5	3	4	4	5	9	11	11	10	10	9	10	10	13	14	9	7	6	5	5	6	8	8
20	7	5	5	4	5	8	11	14	11	7	4	4	7	6	3	11	19	15	15	13	11	10	15	10	9
21	8	11	7	3	7	7	10	9	9	5	6	4	3	4	4	6	7	7	6	7	12	13	8	12	7
22	6	5	5	4	5	6	5	3	6	8	6	9	7	5	6	3	5	5	9	7	5	13	8	11	6
23	5	7	8	4	8	7	7	11	8	6	5	4	3	9	6	6	5	12	11	11	9	8	12	11	8
24	6	5	5	8	6	6	8	10	9	5	7	5	7	2	5	5	7	10	7	11	15	24	19	15	9
25	9	14	10	12	9	5	13	17	17	7	8	7	5	7	9	17	14	9	6	4	4	4	3	2	9
26	2	3	2	2	3	3	2	6	14	13	14	14	14	14	14	6	13	9	6	7	10	12	7	5	8
27	7	5	4	5	3	3	9	16	19	12	12	9	9	16	11	16	16	12	7	4	8	4	3	6	9
28	2	1	2	1	2	3	3	7	14	15	9	8	13	13	11	10	11	14	14	7	6	5	5	6	8
29	4	4	4	4	4	4	3	3	4	9	5	7	10	10	4	4	5	3	4	3	4	3	1	3	5
30	0	3	5	2	2	2	7	5	9	8	7	7	6	9	9	8	10	8	8	6	6	6	5	3	6

MONTHLY STATISTICS:

GEOM	ARITH-----PERCENTILES-----							RANGE-----					STN GEOM	PERCENT	NO. OF TIMES		
MEAN	MEDIAN	MEAN	50	90	95	98	99	1-HR		24-HR			DEVIATION	VALID DATA	1-HR	24-HR	
7	7	8	7	15	17	30	45	0	-	64	3	-	28	2	100	0	0

- NOTES: 1. FLAGS FOR INVALID DATA :
- D: DYNAMIC CALIBRATION
 - T: TELEMETRY/DATALOGGR FAULT
 - M: MAINTENANCE OR ANALYZER FAULT
 - P: POWER FAILURE

THE HONGKONG ELECTRIC COMPANY, LTD.
AIR QUALITY DATA MONTHLY TIME SERIES REPORT
MONTH: JUNE

STATION : AP LEI CHAU
POLLUTANT : SULPHUR DIOXIDE

YEAR : 2025
UNIT : MICROGRAMS/CUBIC METER

DAY	1	2	3	4	5	6	7	8	9	10	11	12	13	14	15	16	17	18	19	20	21	22	23	24	MEAN	
1	2	2	2	2	3	3	4	3	3	3	2	2	2	2	2	2	2	2	2	2	2	2	2	2	5	2
2	5	4	3	3	3	3	4	5	5	6	5	5	4	4	5	3	4	5	3	3	3	3	3	3	6	4
3	3	3	3	3	3	4	4	4	4	4	5	5	4	5	6	5	9	8	7	6	4	5	4	5	5	5
4	4	3	3	2	2	2	2	2	2	2	2	2	2	2	2	2	2	2	2	2	2	2	2	2	4	2
5	2	2	2	2	2	2	2	2	2	2	2	2	2	2	2	2	2	2	3	3	4	4	4	4	3	2
6	3	2	2	2	2	2	2	2	3	3	2	2	3	3	5	M	M	4	3	3	4	5	6	5	3	3
7	5	4	4	3	3	3	4	4	3	5	5	6	6	5	5	3	4	4	3	4	4	3	2	5	4	4
8	4	3	3	3	3	3	4	4	4	15	6	4	4	4	4	4	3	3	3	3	4	3	3	7	4	4
9	5	6	5	4	5	4	4	3	5	6	5	6	5	5	4	5	6	4	3	3	3	3	3	4	4	4
10	3	3	2	3	3	3	3	3	3	4	3	2	3	3	3	3	3	3	2	2	3	3	3	5	3	3
11	3	3	3	3	3	3	3	3	3	3	3	3	3	3	3	3	3	3	3	3	3	3	3	4	3	3
12	3	3	3	3	3	3	3	3	3	3	3	3	3	3	3	3	2	2	3	2	3	2	3	3	3	3
13	3	3	3	3	2	3	3	3	3	3	2	3	3	3	3	2	3	3	3	3	3	3	3	5	3	3
14	3	3	3	3	3	3	3	3	3	4	3	3	3	3	3	3	3	3	3	3	3	3	3	3	3	3
15	3	3	3	3	3	3	3	3	3	3	3	3	3	3	3	3	3	4	3	3	4	3	3	5	3	3
16	4	3	4	3	3	3	3	3	3	3	3	3	3	3	3	3	3	3	3	4	3	3	3	5	3	3
17	4	3	4	3	3	3	3	3	3	3	3	3	3	3	4	3	3	3	3	3	3	3	3	5	3	3
18	5	5	4	4	4	3	3	4	4	4	3	4	3	4	4	4	3	4	3	3	3	3	3	4	4	4
19	3	3	3	3	3	3	3	4	4	3	4	3	3	3	3	3	3	2	2	3	3	3	3	5	3	3
20	4	3	3	3	3	4	3	3	3	4	3	3	3	4	3	3	3	4	4	3	4	4	5	6	4	4
21	5	4	3	3	3	4	3	4	4	3	4	3	3	3	4	3	4	3	3	4	3	4	3	4	3	3
22	4	4	3	4	3	4	4	4	4	4	3	3	3	4	4	3	3	4	4	3	3	4	4	6	4	4
23	4	4	5	4	3	3	4	4	4	3	3	3	3	3	4	4	4	4	4	4	3	3	3	5	4	4
24	4	3	4	4	4	3	3	5	4	4	4	4	4	3	3	3	4	3	3	4	3	5	3	5	4	4
25	4	4	6	6	4	3	4	3	3	3	3	3	3	3	3	3	3	3	3	3	3	3	3	4	3	3
26	3	3	3	3	3	3	3	3	3	3	3	3	3	3	3	3	3	3	3	3	3	3	3	5	3	3
27	3	3	3	3	3	3	3	3	3	3	4	4	3	3	4	3	3	3	3	3	3	3	3	5	3	3
28	3	3	3	3	3	3	3	3	3	3	3	3	3	3	4	3	3	4	4	3	3	3	3	5	3	3
29	4	3	3	3	3	3	3	3	4	4	3	3	5	3	3	3	2	3	3	3	3	3	3	4	3	3
30	3	3	3	3	3	3	3	3	3	3	3	3	3	3	3	3	2	3	3	3	3	3	3	5	3	3

MONTHLY STATISTICS:

GEOM	ARITH-----PERCENTILES-----							-----RANGE-----					STN GEOM	PERCENT	NO. OF TIMES	
MEAN	MEDIAN	MEAN	50	90	95	98	99	1-HR	24-HR	DEVIATION	VALID DATA	ABOVE	LIMIT LEVEL			
3	3	3	3	4	5	6	6	2	-	15	2	-	5	1	100	0

- NOTES: 1. FLAGS FOR INVALID DATA :
- D: DYNAMIC CALIBRATION
 - T: TELEMETRY/DATALOGGR FAULT
 - M: MAINTENANCE OR ANALYZER FAULT
 - P: POWER FAILURE

THE HONGKONG ELECTRIC COMPANY, LTD.
AIR QUALITY DATA MONTHLY TIME SERIES REPORT
MONTH: JUNE

STATION : AP LEI CHAU
POLLUTANT : NITROGEN DIOXIDE

YEAR : 2025
UNIT : MICROGRAMS/CUBIC METER

DAY	1	2	3	4	5	6	7	8	9	10	11	12	13	14	15	16	17	18	19	20	21	22	23	24	MEAN
1	5	4	4	8	19	18	33	16	10	6	2	3	3	3	5	3	4	6	6	3	4	4	4	19	8
2	22	17	20	8	6	14	29	20	17	14	14	12	11	10	15	7	10	11	6	11	11	14	14	13	14
3	7	11	12	13	12	23	21	17	28	27	33	29	35	48	60	72	64	74	74	61	62	54	63	39	
4	49	19	8	5	4	5	5	9	9	7	5	6	6	8	7	9	14	15	19	6	3	3	4	3	10
5	3	2	1	2	2	3	6	7	12	11	11	10	7	5	5	6	7	4	5	5	6	5	4	8	6
6	4	2	1	2	4	6	12	8	21	27	4	3	2	19	24	M	M	11	14	28	18	40	30	12	13
7	35	17	17	14	17	26	17	14	10	12	25	25	20	18	19	12	14	15	14	18	14	9	14	25	18
8	23	10	8	16	14	9	12	13	10	14	12	6	8	10	9	8	5	4	14	10	24	8	5	20	11
9	15	19	15	15	17	15	17	10	14	15	16	7	15	15	13	10	14	8	3	5	2	6	9	11	12
10	6	M	4	8	7	7	11	8	6	11	3	3	3	2	1	2	1	2	2	2	2	1	2	2	4
11	3	3	2	1	1	2	2	2	1	2	2	2	1	2	1	2	1	1	1	2	2	3	3	3	2
12	1	0	0	1	1	2	2	2	3	2	2	2	2	1	2	2	2	0	1	1	1	1	0	4	1
13	3	3	1	2	2	4	10	5	10	6	3	2	2	1	4	4	3	3	4	5	4	10	10	7	5
14	7	5	6	11	7	7	4	2	2	6	6	5	5	4	2	2	1	3	2	5	3	3	4	1	4
15	3	1	0	1	0	1	0	2	2	1	1	0	1	4	4	5	5	13	7	8	14	7	7	12	4
16	9	9	10	3	2	7	6	4	8	4	3	5	4	8	9	7	10	11	13	20	14	14	12	20	9
17	8	4	9	6	5	6	8	9	13	13	7	8	5	5	6	17	6	5	2	4	6	3	2	4	7
18	19	15	5	8	8	7	4	6	10	8	7	8	7	8	7	6	9	12	14	5	5	3	3	5	8
19	1	6	5	7	3	9	8	15	9	2	5	3	2	2	3	2	1	1	1	3	2	3	2	7	4
20	6	3	4	6	8	15	8	10	7	6	4	2	6	11	3	5	9	10	10	9	11	13	19	8	8
21	10	13	6	6	7	10	8	7	6	6	6	3	2	2	3	4	4	12	7	8	11	8	6	7	7
22	4	10	4	6	3	5	5	4	4	4	2	3	3	6	5	5	4	10	7	9	7	15	10	12	6
23	6	11	15	7	4	3	15	17	8	9	10	8	8	9	11	11	12	16	16	19	10	9	10	7	10
24	4	M	8	6	8	4	6	12	13	11	12	14	11	9	10	11	9	12	10	22	18	32	19	11	12
25	8	13	28	28	17	13	13	7	3	2	3	2	2	1	2	1	1	1	2	2	2	3	1	1	7
26	2	1	3	1	1	0	1	2	3	6	4	4	2	1	2	3	6	8	1	6	4	4	3	3	3
27	2	3	6	1	2	6	12	10	5	2	6	5	4	3	8	4	5	6	4	3	2	2	3	5	5
28	2	2	2	2	5	4	1	2	4	3	2	5	6	3	5	4	3	9	12	7	3	3	3	8	4
29	7	4	6	6	7	3	3	4	5	10	2	4	15	4	2	1	3	2	3	4	5	5	0	2	4
30	1	0	2	1	4	1	3	2	3	2	2	1	0	2	1	1	2	3	2	1	4	3	1	2	2

MONTHLY STATISTICS:

GEOM	ARITH-----PERCENTILES-----							-----RANGE-----				STN GEOM	PERCENT	NO. OF TIMES			
MEAN	MEDIAN	MEAN	50	90	95	98	99	1-HR		24-HR	DEVIATION	VALID DATA	1-HR	24-HR			
5	6	8	6	17	22	33	59	0	-	74	1	-	39	2	99	0	0

- NOTES: 1. FLAGS FOR INVALID DATA :
- D: DYNAMIC CALIBRATION
 - T: TELEMETRY/DATALOGGR FAULT
 - M: MAINTENANCE OR ANALYZER FAULT
 - P: POWER FAILURE

THE HONGKONG ELECTRIC COMPANY, LTD.
AIR QUALITY DATA MONTHLY TIME SERIES REPORT
MONTH: JUNE

STATION : CHEUNG CHAU
POLLUTANT : SULPHUR DIOXIDE

YEAR : 2025
UNIT : MICROGRAMS/CUBIC METER

DAY	1	2	3	4	5	6	7	8	9	10	11	12	13	14	15	16	17	18	19	20	21	22	23	24	MEAN
1	1	1	1	1	1	1	1	1	1	1	1	1	1	1	1	1	0	1	1	0	1	0	1	3	1
2	1	1	1	1	1	1	1	1	1	1	1	1	1	1	1	1	1	1	1	1	1	1	1	3	1
3	1	1	1	1	1	1	1	1	1	1	1	1	1	1	2	1	1	1	1	1	1	1	1	3	1
4	2	1	1	1	1	1	1	1	1	1	0	1	1	1	1	1	1	1	1	0	0	1	1	2	1
5	1	1	0	1	1	1	0	0	1	1	1	1	1	1	1	1	1	1	1	1	1	1	1	3	1
6	1	1	1	1	1	1	1	1	1	1	1	1	1	1	1	1	1	0	1	1	1	1	1	3	1
7	1	1	0	0	0	1	1	1	1	1	0	1	1	1	1	0	0	0	0	0	0	1	1	2	1
8	1	1	1	1	1	1	1	1	1	1	1	1	1	1	1	0	0	0	0	1	1	1	1	3	1
9	1	1	1	1	1	1	1	1	1	1	1	1	1	1	1	1	0	0	0	1	1	1	1	3	1
10	1	1	1	1	1	1	1	1	1	1	1	2	1	1	1	0	0	1	0	2	1	1	1	4	1
11	2	1	1	1	2	2	1	2	1	1	2	3	2	2	2	1	1	1	1	1	1	1	1	4	2
12	1	1	1	1	1	1	1	1	1	1	1	2	3	3	2	1	1	1	1	1	1	1	1	3	1
13	1	1	1	1	1	1	2	1	1	1	2	1	1	1	1	1	1	1	1	1	1	1	1	5	1
14	1	1	1	1	1	1	1	1	1	1	1	1	1	1	1	1	1	1	1	1	1	1	1	5	1
15	2	1	1	1	1	1	1	1	1	1	1	1	1	1	1	1	1	1	1	1	1	1	1	6	1
16	2	1	1	1	1	1	1	1	1	1	1	1	1	1	1	1	1	1	1	1	1	1	1	3	1
17	2	1	1	1	1	1	1	1	1	1	1	1	0	1	1	1	1	1	1	1	1	1	1	4	1
18	1	1	1	1	1	1	1	1	1	1	1	1	1	1	1	1	1	1	1	1	1	1	2	4	1
19	2	1	1	1	1	1	1	1	1	1	1	1	1	1	1	1	1	1	1	1	1	1	1	4	1
20	1	1	1	1	1	1	1	1	1	1	1	1	1	1	1	1	1	1	1	1	1	1	1	5	1
21	2	1	1	1	1	1	1	1	1	1	1	1	1	1	1	1	0	1	1	1	1	1	1	7	1
22	2	1	1	1	1	1	1	1	1	1	1	1	1	1	1	1	1	1	1	1	1	1	1	5	1
23	2	2	1	2	1	1	1	1	1	1	1	1	1	1	1	1	1	1	1	1	1	1	1	4	1
24	2	2	2	1	1	1	1	1	1	1	1	1	2	2	1	1	1	0	1	1	1	1	1	4	1
25	2	2	2	2	2	2	2	1	1	1	1	1	1	1	1	1	0	0	1	1	1	1	1	3	1
26	2	1	1	1	1	1	1	1	1	2	1	1	1	1	1	1	1	1	1	1	1	1	1	7	1
27	2	2	2	2	1	2	1	1	1	1	1	1	2	1	1	2	1	1	2	1	2	2	1	5	2
28	2	2	2	2	2	2	2	2	2	1	1	2	2	2	1	1	2	2	2	2	2	1	1	5	2
29	2	2	2	2	2	2	2	2	2	2	2	2	2	2	2	2	1	2	2	2	2	1	2	5	2
30	2	2	2	2	2	2	2	2	2	1	2	1	2	M	M	4	0	2	2	2	2	2	1	2	2

MONTHLY STATISTICS:

GEOM	ARITH-----PERCENTILES-----									-----RANGE-----				STN GEOM	PERCENT	NO. OF TIMES	
MEAN	MEDIAN	MEAN	50	90	95	98	99	1-HR		24-HR		DEVIATION	VALID DATA	ABOVE LIMIT LEVEL			
1	1	1	1	2	2	4	5	0	-	7	1	-	2	1	100	24-HR	
																	0

- NOTES: 1. FLAGS FOR INVALID DATA :
- D: DYNAMIC CALIBRATION
 - T: TELEMETRY/DATALOGGR FAULT
 - M: MAINTENANCE OR ANALYZER FAULT
 - P: POWER FAILURE

THE HONGKONG ELECTRIC COMPANY, LTD.
AIR QUALITY DATA MONTHLY TIME SERIES REPORT
MONTH: JUNE

STATION : CHEUNG CHAU
POLLUTANT : NITROGEN DIOXIDE

YEAR : 2025
UNIT : MICROGRAMS/CUBIC METER

DAY	1	2	3	4	5	6	7	8	9	10	11	12	13	14	15	16	17	18	19	20	21	22	23	24	MEAN
1	12	24	23	31	30	38	46	35	27	12	5	5	12	6	4	13	12	12	13	15	25	21	19	14	19
2	17	12	10	15	9	25	17	14	9	6	11	6	6	6	8	5	5	15	22	45	36	46	20	32	17
3	21	16	20	22	21	19	15	21	29	92	43	46	33	39	59	60	81	64	106	112	90	81	71	58	51
4	59	M	40	24	20	14	11	29	17	17	14	13	13	13	11	20	39	48	48	41	14	9	11	10	23
5	9	13	20	27	18	14	8	12	13	13	16	20	5	5	6	3	7	6	8	8	5	6	6	14	11
6	12	6	4	5	6	11	36	21	26	24	6	8	7	10	6	12	15	7	5	9	14	5	5	6	11
7	7	6	5	6	7	9	12	25	19	8	8	9	8	8	3	4	3	4	3	5	6	3	5	5	7
8	9	5	7	5	9	8	10	10	7	6	3	2	3	1	3	3	3	3	3	4	4	4	5	9	5
9	5	7	8	10	12	11	16	10	6	6	8	7	3	2	3	3	5	4	5	2	6	14	22	16	8
10	21	14	10	12	20	27	17	19	20	25	24	13	4	4	3	3	4	6	4	17	17	17	6	11	13
11	8	14	16	19	18	18	13	11	4	5	9	7	8	6	8	5	4	5	7	8	7	11	18	14	10
12	6	4	5	6	5	4	11	10	17	17	13	16	11	10	10	6	7	7	4	5	4	5	7	5	8
13	10	6	7	4	3	5	41	19	7	11	28	15	22	9	4	3	4	7	10	11	6	8	9	4	11
14	3	3	3	2	2	2	3	2	1	1	1	3	1	2	1	0	0	1	1	2	2	1	3	2	2
15	1	1	1	2	1	1	3	2	2	2	2	4	3	3	2	3	3	2	5	4	4	7	5	8	3
16	6	6	5	4	4	4	9	6	4	13	10	6	4	3	10	9	8	7	4	9	4	12	8	5	7
17	4	4	4	6	5	4	3	5	5	3	4	3	4	1	2	1	2	4	6	5	6	12	3	14	5
18	6	M	2	2	3	5	3	4	3	2	2	2	3	2	2	2	2	1	6	3	5	4	10	5	3
19	4	4	3	6	5	5	10	6	7	9	4	3	2	2	2	2	2	2	7	5	5	4	3	2	4
20	4	4	4	2	2	4	4	3	2	1	2	1	1	2	1	2	4	6	4	7	5	3	6	3	3
21	3	11	3	4	5	3	4	2	1	1	1	0	1	1	1	1	1	4	4	2	6	4	4	5	3
22	6	5	4	4	5	4	7	3	3	2	2	2	2	3	3	2	2	3	2	3	5	4	3	4	3
23	5	3	5	9	3	3	7	7	2	4	2	3	1	3	1	3	4	3	4	4	5	7	5	5	4
24	3	6	8	7	4	5	6	7	6	6	5	4	5	4	2	2	3	2	6	5	9	3	5	19	6
25	23	19	18	41	39	36	32	28	14	11	4	4	2	3	3	2	1	4	4	5	6	10	5	10	14
26	8	6	6	8	4	6	4	6	3	2	2	3	3	2	3	3	4	14	4	7	7	4	6	5	5
27	3	1	3	3	2	4	3	6	7	7	4	1	2	2	2	10	9	8	11	11	10	17	6	10	6
28	9	6	5	4	4	5	6	2	3	4	2	2	4	5	6	5	6	10	4	5	10	8	10	4	5
29	8	6	8	6	3	10	13	12	9	3	8	6	3	7	3	6	3	5	12	13	9	4	4	7	7
30	5	12	9	12	12	7	7	11	8	12	3	3	4	M	M	M	M	5	9	11	12	14	6	6	8

MONTHLY STATISTICS:

GEOM	ARITH-----PERCENTILES-----							-----RANGE-----				STN GEOM	PERCENT	NO. OF TIMES			
MEAN	MEDIAN	MEAN	50	90	95	98	99	1-HR		24-HR	DEVIATION	VALID DATA	1-HR	24-HR			
6	6	9	6	20	29	46	63	0	-	112	2	-	51	2	99	0	0

- NOTES: 1. FLAGS FOR INVALID DATA :
- D: DYNAMIC CALIBRATION
 - T: TELEMETRY/DATALOGGR FAULT
 - M: MAINTENANCE OR ANALYZER FAULT
 - P: POWER FAILURE

Appendix C Summary Results on Water Quality Monitoring

LAMMA POWER STATION FGD WASTEWATER TREATMENT PLANT EFFLUENT DISCHARGE TO ASH LAGOON SUSPENDED SOLIDS AND PH

Period : April - June 2025

Week Ending	No. of Samples	Suspended Solids, mg/L			pH		
		Maximum	Minimum	Average	Maximum	Minimum	Average
05/04/25	0*	N/A*	N/A*	N/A*	N/A*	N/A*	N/A*
12/04/25	3*	5	4	4	8.4	8.4	8.4
19/04/25	0*	N/A*	N/A*	N/A*	N/A*	N/A*	N/A*
26/04/25	0*	N/A*	N/A*	N/A*	N/A*	N/A*	N/A*
03/05/25	1*	4	4	4	8.4	8.4	8.4
10/05/25	1*	5	5	5	8.4	8.4	8.4
17/05/25	0*	N/A*	N/A*	N/A*	N/A*	N/A*	N/A*
24/05/25	0*	N/A*	N/A*	N/A*	N/A*	N/A*	N/A*
31/05/25	0*	N/A*	N/A*	N/A*	N/A*	N/A*	N/A*
07/06/25	0*	N/A*	N/A*	N/A*	N/A*	N/A*	N/A*
14/06/25	0*	N/A*	N/A*	N/A*	N/A*	N/A*	N/A*
21/06/25	0*	N/A*	N/A*	N/A*	N/A*	N/A*	N/A*
28/06/25	0*	N/A*	N/A*	N/A*	N/A*	N/A*	N/A*

Remark :

* - No sampling due to no discharge

**LAMMA POWER STATION
FGD WASTEWATER TREATMENT PLANT
EFFLUENT DISCHARGE TO ASH LAGOON
TRACE METAL, TOTAL PHOSPHORUS
AND TOTAL NITROGEN ANALYSIS**

Period : April – June 2025

Sampling date		8/4/2025	2/5/2025	June
Barium,	ug/L	<150	<150	N/A*
Mercury,	ug/L	<0.5	<0.5	N/A*
Cadmium,	ug/L	4	4	N/A*
Iron,	ug/L	<400	<400	N/A*
Total Phosphorous,	mg/L	<0.8	<0.8	N/A*
Total Nitrogen,	mg/L	124	102	N/A*
Cyanide,	mg/L	<0.01	<0.01	N/A*

Remark:

- (i) According to the WPCO Ash Lagoon Discharge Licence, contents at exact levels of trace metals below 1/10th of the WPCO Licence permitted limits will not be reported. When the concentration of a metal exceeds 1/10th of the limit, the exact value of the metal concentration will be reported.
- (ii) * - No sampling due to no discharge

Appendix D Summary of EMIS

EM&A Log Ref.	Mitigation Measures	Implementation Status
	GENERAL	
A1	No other process, except the Wet Limestone-Gypsum process used in the FGD plants of the coal-fired Units L6, L7 and L8 within the Lamma Power Station, shall be used in the FGD plants for the projects unless otherwise agreed by EPD.	Complied
	WATER QUALITY	
B1	All wastewater arising from the operation of the projects shall be collected and directed to the existing wastewater treatment plant within the Lamma Power Station for treatment.	Complied
B2	The operational plant effluent from the FGD plants should be reused as much as possible in order to minimise discharge to the WWTP.	Complied
B3	Maintenance of the WWTP should be performed regularly to ensure the effluent from the WWTP would not exceed the current requirements stipulated in the WPCO licence for Ash Lagoon.	Complied
	WASTE	
C1	No gypsum or sludge arising from the operation of the projects shall be disposed of anywhere. All gypsum and sludge shall be collected and reused.	Complied
	NOISE	
D1	Equipment including the Absorber Recirculation Pump, Oxidation Air Blower, Booster Fan and Booster Fan Motor of the FGD plants shall be acoustically insulated and the Gas-Gas Heater (untreated side) of the FGD plants shall be provided with reinforced lagging to reduce the noise impact.	Complied