

香港電燈有限公司
The Hongkong Electric Co., Ltd.



**Lamma Power Station
Units L4 & L5 Flue Gas Desulphurization Plant
Retrofit
Operational Phase
Quarterly Environmental Monitoring & Audit Report
January – March 2010**

香港電燈有限公司
The Hongkong Electric Co., Ltd.



ENVIRONMENTAL IMPACT ASSESSMENT (EIA) ORDINANCE, CAP. 499

ENVIRONMENTAL PERMIT NO. EP-248/2006

**LAMMA POWER STATION
UNITS L4 & L5 FLUE GAS DESULPHURIZATION PLANT RETROFIT**

**ENVIRONMENTAL MONITORING & AUDIT PROGRAMME
AT OPERATIONAL PHASE**


Report Title	Quarterly EM&A Report (January to March 2010)
Date	8 June 2010
Certified by	 (Mr. IP Tai Yan, Environmental Team Leader)

TABLE OF CONTENT

EXECUTIVE SUMMARY

1.	INTRODUCTION.....	1
1.1	Background	1
1.2	Project Organisation	2
1.3	Plant Availability during the Reporting Period	2
1.4	Malfunction/Outage Records of Pollution Control Equipment	2
1.5	Summary of EM&A Requirements	3
2.	AIR QUALITY.....	9
2.1	Monitoring Requirements	9
2.2	Summary of Results and Observations	9
3.	WATER QUALITY.....	10
3.1	Monitoring Requirements	10
3.2	Summary of Results and Observations	10
4.	ENVIRONMENTAL AUDIT.....	12
4.1	Review of Environmental Monitoring Procedures	12
4.2	Assessment of Environmental Monitoring Results	12
4.3	Status of Environmental Licensing and Permitting	14
4.4	Implementation Status of Environmental Mitigation Measures	14
4.5	Implementation Status of Event/Action Plan	14
4.6	Implementation Status of Environmental Complaint Handling Procedures	14
5.	FUTURE KEY ISSUES.....	16
5.1	Outage Plan for the coming 3 months	16
5.2	Key issues for the coming 3 months	16
6.	CONCLUSION.....	17

LIST OF TABLES

Table 2.1	Air Quality Monitoring Parameters and Frequency
Table 3.1	Water Quality Monitoring Parameters and Frequencies
Table 4.1	Summary of Action/Limit Level Exceedances on Monitoring Parameters
Table 4.2	Amount of Gypsum and Sludge Collected for Reuse by Contractor
Table 4.3	Summary of Environmental Licensing and Permit Status
Table 4.4	Environmental Complaints / Enquiries Received
Table 4.4	Outstanding Environmental Complaints / Enquiries Carried Over

LIST OF FIGURES

- Figure 1.1 Location of New Facilities for L4 & L5 FGD Plant
- Figure 1.2 General Arrangement of L4 & L5 FGD Plant
- Figure 1.3 Schematic Diagram of L4 & L5 FGD Plant
- Figure 1.4 Simplified Schematic Diagram of FGD Wastewater Treatment Plant
- Figure 1.5 Organization Chart at Operational Phase

APPENDIX

- Appendix A Event/Action Plans in Response to Exceedance of AL Levels
- Appendix B Air Quality Monitoring Results
- Appendix C Summary Results on Water Quality Monitoring
- Appendix D Summary of EMIS

EXECUTIVE SUMMARY

The operational phase of Lamma Unit L5 Flue Gas Desulphurization Plant (FGD) commenced in July 2009 following the completion of erection works and commissioning tests. This is the third quarterly Environmental Monitoring and Audit (EM&A) report for the Project “Lamma Power Station Units L4 & L5 Flue Gas Desulphurization Plant Retrofit” prepared by the Environmental Team (ET). This report presents the results of impact monitoring on air and water quality and environmental audit for the operation of the said project in the period from January to March 2010.

Environmental monitoring for air quality and water quality were carried out for the purpose of this EM&A program as well as for fulfilling the requirements stipulated in the relevant licences. The results were checked against the established Action/Limit (AL) levels. The implementation status of the environmental mitigation measures, Event/Action Plan and environmental complaint handling procedures were also checked.

Plant Availability

Unit L5 was out of service during the following period:

Period	Remark
09/01/2010 20:44 to 11/01/2010 10:26	Defect Rectification
04/03/2010 21:20 to 03/05/2010 13:44	Unit Overhaul

Malfunction/Outage Records of Pollution Control Equipment

Equipment	Period	Cause	Actions Taken
L5 FGD	02/01/2010 03:24 to 03:41	Routine checking of bypass dampers.	Informed EPD by letter dated 04/01/2010.
L5 FGD	31/01/2010 07:00 to 18:08	275 kV Switching Station Bus Bar 1 Outage	Informed EPD by letters dated 29/01/2010 and 02/02/2010.
L5 FGD	07/02/2010 07:02 to 16:01	275 kV Switching Station Bus Bar 2 Outage	Informed EPD by letters dated 04/02/2010 and 08/02/2010.
L5 FGD	20/02/2010 03:43 to 03:50	Routine checking of bypass dampers.	Informed EPD by letter dated 23/02/2010.
L5 FGD	27/02/2010 01:51 to 01:56	Routine checking of bypass dampers.	Informed EPD by letter dated 02/03/2010.
L5 FGD	27/02/2010 14:22 to 14:33	FGD bypassed dampers was opened to prevent possible tripping of unit L5 in case L5 FGD was tripped.	Informed EPD by letter dated 02/03/2010.

Environmental Monitoring Works

Environmental monitoring works were performed during the operation of Unit L5 FGD Plant in the reporting period.

Air Quality

No exceedance of Action and Limit levels for air quality were recorded in the reporting period.

Water Quality

No exceedance of Action and Limit levels for water quality were recorded in the reporting period.

Environmental Licensing and Permitting

Description	Permit / Licence No.	Valid Period		Issued To	Date of Issuance
		From	To		
Environmental Permit	EP-248/2006	25/04/2006	-	HK Electric	25/04/2006
Specified Processes Licence issued under APCO	L-7-002(7)	01/01/2009	31/12/2010	HK Electric	31/12/2008
WPCO discharge licence for Ash Lagoon	EP890/W2/XD018	16/04/2007	31/12/2011	HK Electric	16/04/2007

Implementation Status of Environmental Mitigation Measures

Environmental mitigation measures were implemented in the reporting period.

Environmental Complaints

During the reporting period, there were two (2) enquiries concerning “black smoke from Lamma P/S”. Yet no abnormality that might have caused the alleged “black smoke” was identified. There was no further enquiry and the cases were closed.

Future key issues

Key issues to be considered in the coming months include:

Air Impact

- To continuously carry out the air quality monitoring for Unit L5.

Water Impact

- To continuously carry out the water quality monitoring for FGD WWT plant.

Concluding Remarks

The environmental performance of the project was generally satisfactory.

1. INTRODUCTION

The operational phase of Lamma L5 FGD Plant commenced in July 2009 following the completion of erection works and commissioning tests. The Environmental Team (hereinafter called the “ET”) was formed within The Hongkong Electric Co. Ltd (HK Electric) to undertake Environmental Monitoring and Audit for the “Operation of Lamma Power Station Units L4 & L5 Flue Gas Desulphurization Plant Retrofit Project”) under the requirements of Clause 2.18 of Environmental Permit (EP) No. EP-248/2006.

This report summarizes the environmental monitoring and audit work for the Project for the period from January to March 2010.

1.1 Background

The Project involves retrofitting the two existing 350MW coal-fired generating Units L4 and L5 of Lamma Power Station with Flue Gas Desulphurisation (FGD) plant for reducing sulphur dioxide emissions in support of Government policy to improve the air quality of the Pearl River Delta.

The Project includes the installation and operation of FGD plants with flue gas desulphurization efficiency of 90% for the two 350MW coal-fired Units L4 & L5 to reduce the overall SO₂ emissions from Lamma Power Station. The process adopted for the FGD plants is “Wet Limestone-Gypsum”, a technology which has already been used in, and proved effective and reliable for the existing coal-fired units L6, L7 & L8. The flue gas from the boiler is directed to the FGD absorber inside which removal of SO₂ is take place by reaction with limestone slurry. After passing through the absorber, the treated flue gas is heated up by a gas-gas heater to over 80°C at boiler rated capacity and directed back to the existing chimney for discharge to the atmosphere. Figure 1.1, Figure 1.2 and Figure 1.3 show the location and schematic of the FGD plants.

Wastewater filtrated from the reacted limestone slurry, i.e. gypsum slurry, is produced and it is directed to the existing FGD wastewater treatment plant (WWTP). The FGD WWTP is designed to treat the effluent from FGD plants by alkalization, precipitation and neutralization processes. The schematic diagram of the FGD WWTP is illustrated in Figure 1.4.

The additional equipment for the FGD Plant retrofit project for Units L4 and L5 includes:

- Two sets of FGD absorbers and associated ductworks
- Two sets of booster fans
- Two sets of gas-gas heaters
- FGD Switchgear and Equipment Building
- Gypsum dewatering system comprising two sets of hydrocyclones and belt filters

1.2 Project Organisation

The management structure to oversee the Project includes the following:

- Environmental Protection Department (The Authority);
- General Manager (Corporate Development) (The official contact person between HK Electric and EPD);
- Environmental Team Leader (ET Leader);
- Environmental Team (ET).

The organization chart for the Operation EM&A programme is shown in Figure 1.5.

1.3 Plant Availability during the Reporting Period

Unit L5 was out of service during the following period:

Period	Remark
09/01/2010 20:44 to 11/01/2010 10:26	Defect Rectification
04/03/2010 21:20 to 03/05/2010 13:44	Unit Overhaul

1.4 Malfunction/Outage Records of Pollution Control Equipment

Equipment	Period	Cause	Actions Taken
L5 FGD	02/01/2010 03:24 to 03:41	Routine checking of bypass dampers.	Informed EPD by letter dated 04/01/2010.
L5 FGD	31/01/2010 07:00 to 18:08	275 kV Switching Station Bus Bar 1 Outage	Informed EPD by letters dated 29/01/2010 and 02/02/2010.
L5 FGD	07/02/2010 07:02 to 16:01	275 kV Switching Station Bus Bar 2 Outage	Informed EPD by letters dated 04/02/2010 and 08/02/2010.
L5 FGD	20/02/2010 03:43 to 03:50	Routine checking of bypass dampers.	Informed EPD by letter dated 23/02/2010.
L5 FGD	27/02/2010 01:51 to 01:56	Routine checking of bypass dampers.	Informed EPD by letter dated 02/03/2010.
L5 FGD	27/02/2010 14:22 to 14:33	FGD bypassed dampers was opened to prevent possible tripping of unit L5 in case L5 FGD was tripped.	Informed EPD by letter dated 02/03/2010.

1.5 Summary of EM&A Requirements

Environmental Monitoring and Audit (EM&A) requirements have been discussed in the Environmental Impact Assessment (EIA) Report for the Project. The assessment results indicate that environmental monitoring work required for the EM&A programmes of this Project is already in place or would be implemented under Lamma Power Station Extension Environmental Permit or environmental licenses for the operation of the existing Lamma Power Station. Such monitoring works are considered adequate for this Project and no additional EM&A activities are required. Hence, environmental monitoring for air quality and water quality are carried out for the purpose of this EM&A program as well as for fulfilling the requirements stipulated in the relevant licences.

The EM&A monitoring work for air and water quality are described in Section 2 and Section 3 respectively.

The following environmental audits are summarized in Section 4 of the report:

- Environmental monitoring results;
- The status of environmental licensing and permits for the Project;
- The implementation status of environmental protection and pollution control / mitigation measures.

The future key issues for the Project will be reported in Section 5 of this report.

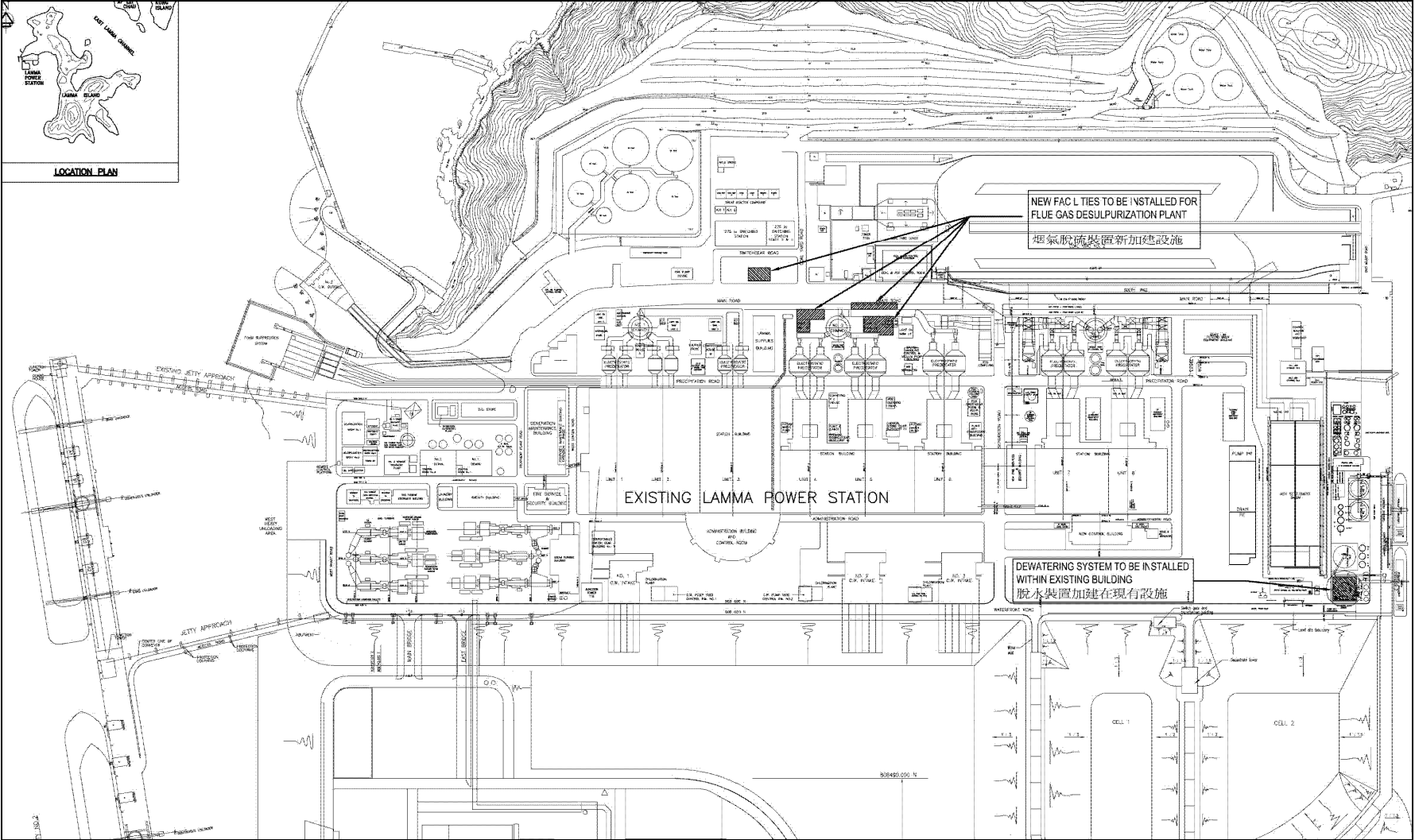


Figure 1.1 Location of New Facilities for L4 & L5 FGD Plant

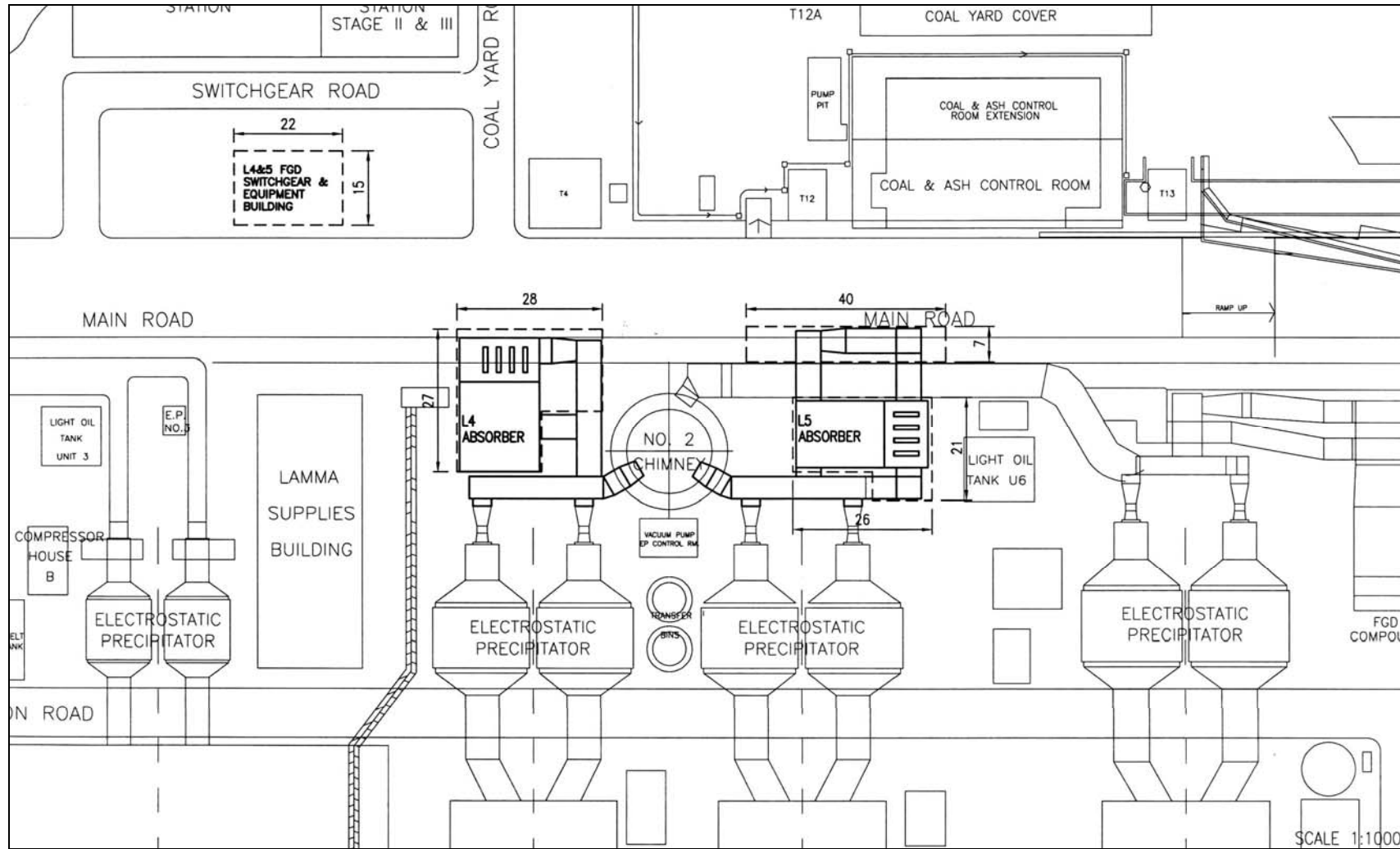


Figure 1.2 General Arrangement of L4 & L5 FGD Plant

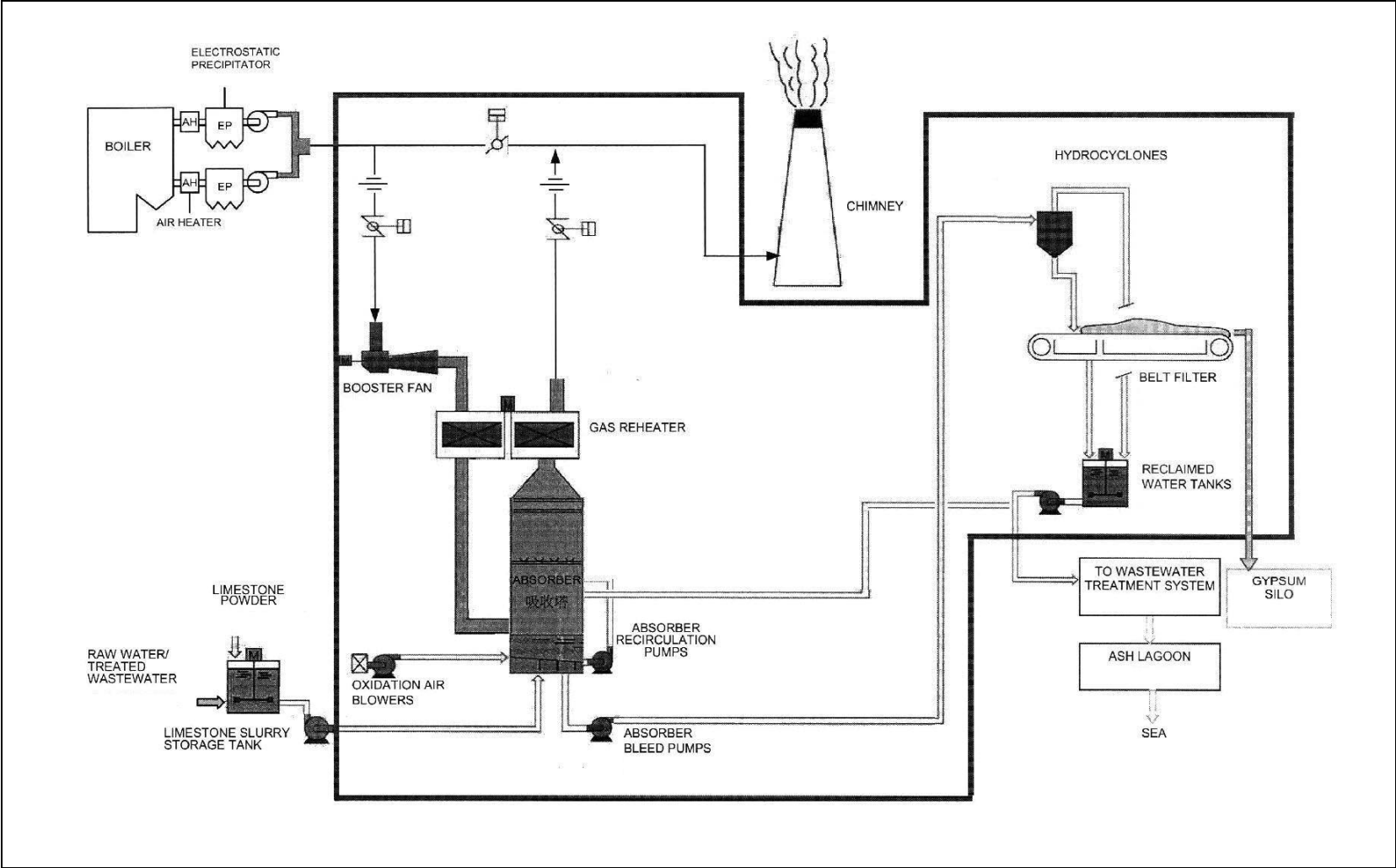


Figure 1.3 Schematic Diagram of the L4 & L5 FGD Plant

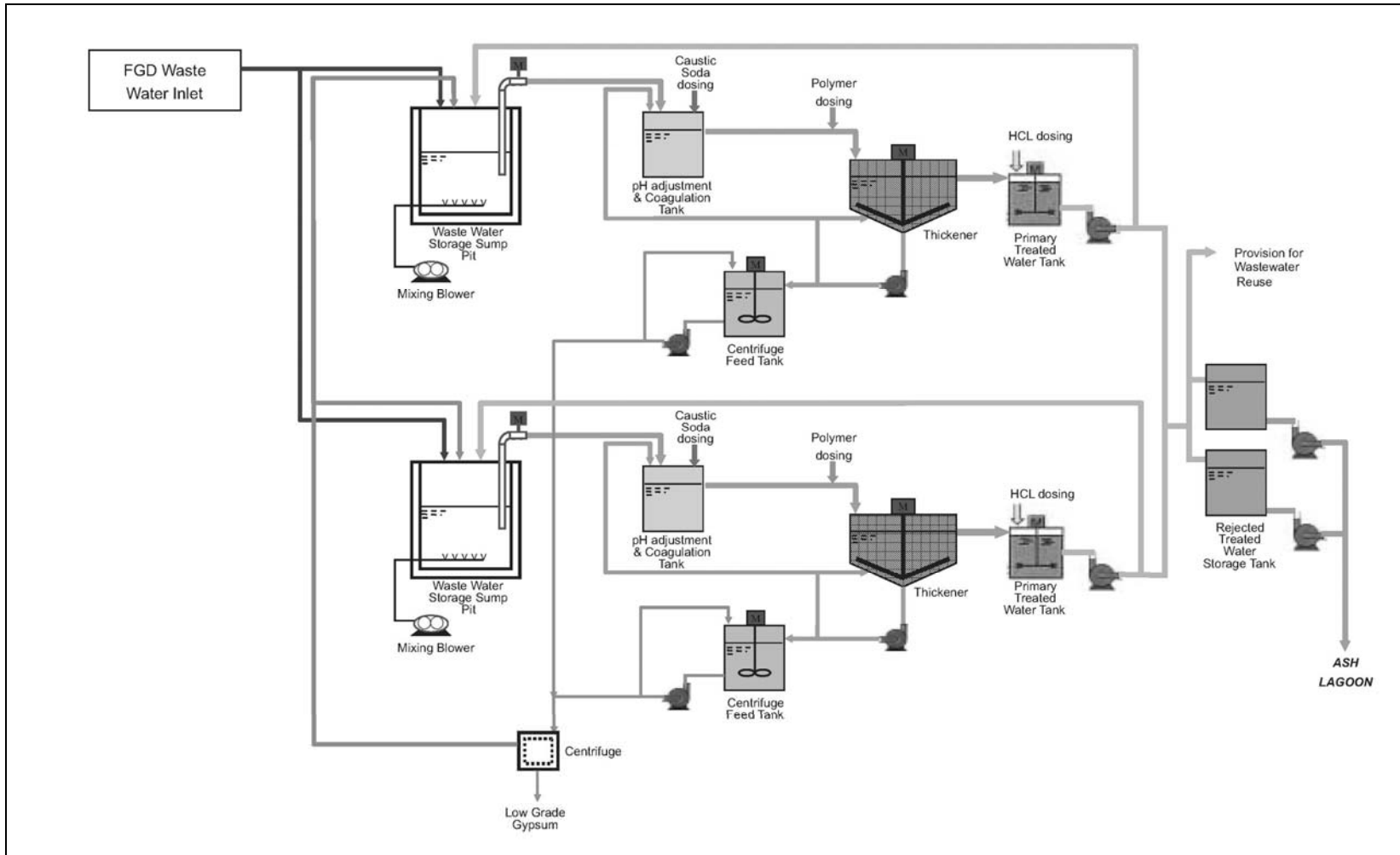


Figure 1.4 Simplified Schematic Diagram of FGD Wastewater Treatment Plant

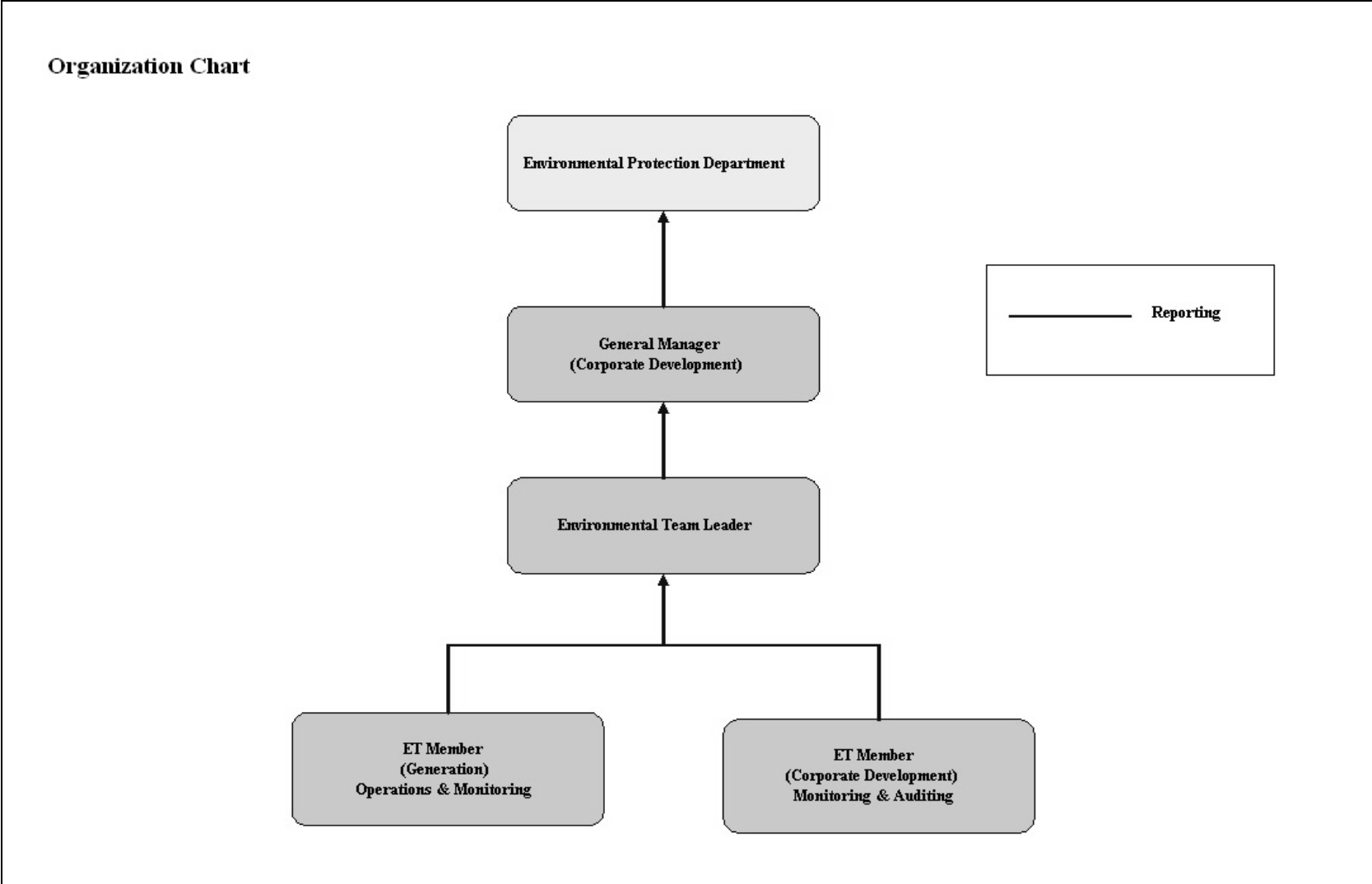


Figure 1.5 Organization Structure at Operational Phase of the Project

2. AIR QUALITY

2.1 Monitoring Requirements

Since the Project will bring a general air quality improvement, no additional EM&A activities are considered required, besides those already in place, such as those required by specific process licenses for the operation of the existing Lamma Power Station. In accordance with the requirements stipulated in the Specified Processes Licence issued under Air Pollution Control Ordinance, various operation parameters as stated in Table 2.1 were monitored and checked against the Action/Limit Levels shown in Appendix A.

Table 2.1 Air Quality Monitoring Parameters and Frequency

Sources of Emission	Parameter	Frequency
Steam boiler L5	Particulate	Once / year
	Particulate (Opacity)	Continuous
	SO ₂	Continuous
	NO _x expressed as NO ₂	Continuous
Fugitive Dust (Coal, PFA, Limestone, gypsum)	Total Suspended Particulate	Once every six days
Chimney emissions	Ambient air	Continuous at existing ambient air monitoring stations
	SO ₂	
	NO ₂	

2.2 Summary of Results and Observations

Monitoring of various parameters as listed in Table 2.1 above was conducted during the operation of Unit L5 in the reporting period. A summary of monitoring data is shown in Appendix B.

No Action/Limit Level exceedance was recorded in the reporting period.

3. WATER QUALITY

3.1 Monitoring Requirements

According to the EIA Report for the Project, the current monitoring programme for the Lamma Power Station can cover the Project and no additional EM&A measures are required besides those already in place. Hence, the EM&A work on water quality should strictly follow the relevant monitoring requirements stipulated in the discharge licence for Ash Lagoon issued under the Water Pollution Control Ordinance (WPCO).

Water quality monitoring was carried out for FGD Waste Water Treatment Plant (WWTP) in the reporting period. The parameters stated in Table 3.1 were monitored and checked against the Action/Limit Levels as given in Appendix A.

Table 3.1 Water Quality Monitoring Parameters and Frequencies

Item	Parameters	Frequencies
1	pH	Daily
2	Suspended Solids	Daily
3	Iron	Monthly
4	Barium	Monthly
5	Mercury	Monthly
6	Cadmium	Monthly
7	Cyanide	Monthly
8	Total Phosphorus	Monthly
9	Total Nitrogen	Monthly

3.2 Summary of Results and Observations

Monitoring of various parameters as listed in Table 3.1 above was carried out during the discharge of the WWTP in the reporting period. A summary of the data is shown in Appendix C.

The data recorded for the monitoring parameters were all below their corresponding Action/Limit Levels. No Action/Limit level exceedance was recorded in the reporting period. The effluent quality was generally satisfactory.

4. ENVIRONMENTAL AUDIT

4.1 Review of Environmental Monitoring Procedures

The environmental monitoring procedures were regularly reviewed by the Environmental Team. No modification to the existing monitoring procedures was recommended.

4.2 Assessment of Environmental Monitoring Results

Monitoring results for Air Quality and Water Quality

The environmental monitoring results for air quality, noise and water quality are presented in Sections 2, 3 and 4 respectively are summarized in Table 4.1.

Table 4.1 Summary of Action/Limit Level Exceedances on Monitoring Parameters

Item	Parameter Monitored	Monitoring Period	No. of Exceedances In		Event/Action Plan Implementation Status and Results
			Action Level	Limit Level	
Air					
1	Annual analysis of dust particulate emission rates at chimney stacks.	01/01/10 31/03/10	N.A.	0	
2	Continuous monitoring of opacity, NO _x , SO ₂ and CO ₂ in the flue gas at the chimney stacks	01/01/10 31/03/10	0	0	
3	TSP monitoring at Lamma Power Station Boundary (ie East Gate and Reservoir).	01/01/10 31/03/10	0	0	
4	Ambient SO ₂ & NO _x monitoring at the Peak, Queen Mary Hospital, Victoria Road, Chung Hom Kok, Ap Lei Chau and	01/01/10 31/03/10	0	0	

Item	Parameter Monitored	Monitoring Period	No. of Exceedances In		Event/Action Plan Implementation Status and Results
			Action Level	Limit Level	
	Cheung Chau.				
Water					
1	pH in WWTP Effluent	01/01/10 31/03/10	0	0	
2	Suspended Solids in WWTP Effluent	01/01/10 31/03/10	0	0	
3	Iron in WWTP Effluent	01/01/10 31/03/10	0	0	
4	Barium in WWTP Effluent	01/01/10 31/03/10	0	0	
5	Mercury in WWTP Effluent	01/01/10 31/03/10	0	0	
6	Cadmium in WWTP Effluent	01/01/10 31/03/10	0	0	
7	Cyanide in WWTP Effluent	01/01/10 31/03/10	0	0	
8	Total Phosphorus in WWTP Effluent	01/01/10 31/03/10	0	0	
9	Total Nitrogen in WWTP Effluent	01/01/10 31/03/10	0	0	

Waste Management Records

The quantity of FGD gypsum and sludge collected for reuse by contractor in the reporting period are shown in Table 4.2.

Table 4.2 Amount of Gypsum and Sludge Collected for Reuse by Contractor

Period	Amount of Gypsum Collected	Amount of Sludge Collected
January 2010	7,011.1 MT	22.5 MT
February 2010	3,500.0 MT	28.1 MT
March 2010	5,058.5 MT	8.9 MT

4.3 Status of Environmental Licensing and Permitting

All permits/licenses obtained as of March 2010 are summarised in Table 4.3.

Table 4.3 Summary of Environmental Licensing and Permit Status

Description	Permit / Licence No.	Valid Period		Status
		From	To	
Environmental Permit	EP-248/2006	25/04/2006	-	Valid
Specified Processes Licence issued under APCO	L-7-002(7)	01/01/2009	31/12/2010	Valid
WPCO discharge licence for Ash Lagoon	EP890/W2/XD018	16/04/2007	31/12/2011	Valid

4.4 Implementation Status of Environmental Mitigation Measures

Mitigation measures detailed in the EIA Report and EP are required to be implemented. An updated summary of the Environmental Mitigation Implementation Schedule (EMIS) is presented in Appendix D.

4.5 Implementation Status of Event/Action Plan

A list of specific actions in the event of exceedances of the various threshold levels for specific emission and discharge sources is given in Appendix A.

As no Action/Limit level exceedance was recorded, no action has been devised.

4.6 Implementation Status of Environmental Complaint Handling Procedures

During the reporting period, there were two (2) enquiries concerning “black smoke from Lamma P/S” as summarized in Table 4.4.

Table 4.4 Environmental Complaints / Enquiries Received

Case Reference / Date, Time Received / Date, Time Concerned	Descriptions / Actions Taken	Conclusion / Status
<p><i>Reference:</i> EC100400162</p> <p><i>Received on:</i> 01/03/2010 p.m.</p> <p><i>Concerned about:</i> “black smoke from Lamma P/S”</p>	<p>EPD verbally informed HK Electric that the Department had received a complaint against “black smoke from Lamma P/S recently”. After investigation, HK Electric found no abnormality that might have caused the alleged “black smoke”. HK Electric has also provided relevant operations data to EPD for reference as requested. There was no further enquiry since then.</p>	<p>Nothing abnormal was identified. There was no further enquiry and the case was closed.</p>
<p><i>Reference:</i> EC100400161</p> <p><i>Received on:</i> 15/03/2010, 03:08.</p> <p><i>Concerned about:</i> “black smoke from Lamma P/S”</p>	<p>A gentleman called HK Electric and claimed that “black smoke was emitting from the chimneys of Lamma P/S”. After investigation, HK Electric found no abnormality and believed that the alleged “black smoke” was the steam from a unit during start-up under the foggy weather. The caller was replied accordingly and was invited to visit the P/S to get a better understanding of its operation. Yet he declined the invitation and did not raise any further enquiry since then.</p>	<p>Nothing abnormal was identified. There was no further enquiry and the case was closed.</p>

Table 4.4 Outstanding Environmental Complaints / Enquiries Carried Over

Case Reference / Date, Time Received / Date, Time Concerned	Descriptions / Actions Taken	Conclusion / Status
Nil	N/A	N/A

5. FUTURE KEY ISSUES

5.1 Outage Plan for the coming 3 months

No major outage planned for the next 3 months.

5.2 Key issues for the coming 3 months

Key issues to be considered in the coming 3 months include:

Air Impact

- To continuously carry out the air quality monitoring for Unit L5.

Water Impact

- To continuously carry out the water quality monitoring for FGD Waste Water Treatment Plant.

6. CONCLUSION

Environmental monitoring was performed as required in the reporting period from January to March 2010. All monitoring results were checked and reviewed.

No Action/Limit level exceedance on air quality parameters were recorded in the reporting period.

No Action/Limit level exceedance on water quality parameters were recorded in the reporting period.

Environmental mitigation measures recommended in the EIA Report and EP were implemented in the reporting period. There were two (2) enquiries concerning “black smoke from Lamma P/S”. Yet no abnormality that might have caused the alleged “black smoke” was identified. No prosecution was received for this Project in the reporting period.

The environmental performance of the Project was generally satisfactory.

Appendix A Event/Action Plans in Response to Exceedance of AL Levels

A.1 Air

Source of Emissions	Parameters to be Monitored	Frequency	Concentration Not to Be Exceeded	Action	Limit	Proposed Action
Steam boiler L5	Particulate	once/year	85 mg/Nm ³	-	85	ET Leader informs Generation Division at action level. Maintenance initiated. Temporary load shift until pollution control equipment repaired and reinstated. Report to EPD.
	Particulate (Opacity)	continuous	40% (bihourly)	35	40	
	SO ₂	continuous	200 mg/Nm ³ (1h)	190	200	
	NO _x expressed as NO ₂	continuous	615 mg/Nm ³ (1h)	585	615	
Fugitive dust (Coal, PFA, limestone, gypsum)	TSP	Once every six days.	260 (µg/m ³) (24 hours)	-	260	Investigation of sources and additional dust suppression to be employed at Limit level. Frequency of monitoring to be increased as necessary.
Chimney emissions	Ambient air SO ₂	Continuous at existing ambient air monitoring stations	800 (µg/m ³) (1h)	-	800	ET to review data on post-hoc basis and check for possible power station contribution.
	NO ₂		300 (µg/m ³) (1h)	-	300	

A.2 Water

Source of Discharges	Parameters to be Monitored	Frequency	Concentration Not to Be Exceeded	Action	Limit	Proposed Action
FGD Wastewater Treatment Plant	pH	Daily	6-9	-	6-9	If pH exceeds limit level, consideration to be given to adjust chemical dosing. ET Leader inform Generation Division and investigation be initiated to identify and remedy cause.
	Suspended Solids	Daily	30 mg/L	25	30	
	Iron	Monthly	4 mg/L	3.6	4	For all other parameters except pH, Generation Division to be informed, frequency of monitoring to be increased, and investigations to be initiated to identify cause and remedy if concentration exceeds action level. If problem persists to exceed the limit level, ET Leader verbally informs EPD and ensures remedial actions implemented.
	Barium	Monthly	1.5 mg/L	1.3	1.5	
	Mercury	Monthly	0.005 mg/L	0.0045	0.005	
	Cadmium	Monthly	0.005 mg/L	0.0045	0.005	
	Cyanide	Monthly	0.1 mg/L	0.09	0.1	
	Total Phosphorus	Monthly	8 mg/L	7.2	8	
	Total Nitrogen	Monthly	400 mg/L	360	400	

B.2 Unit L5 Stack Monitoring at Lamma Power Station

Monthly Summary of Stack NO_x and SO₂

Date	Daily Maximum		
	SO ₂ concentration (mg/Nm ³) [#]	NO _x concentration (mg/Nm ³) [#]	Opacity (%)
1/1/2010	9	360	14
2/1/2010	51	358	17
3/1/2010	18	381	18
4/1/2010	63	387	21
5/1/2010	24	371	21
6/1/2010	19	366	22
7/1/2010	15	441	20
8/1/2010	13	476	19
9/1/2010	5	352	15
10/1/2010	*	*	*
11/1/2010	4	409	16
12/1/2010	5	332	13
13/1/2010	7	329	13
14/1/2010	5	330	13
15/1/2010	5	314	13
16/1/2010	1	266	13
17/1/2010	*	*	*
18/1/2010	0	234	14
19/1/2010	3	282	13
20/1/2010	1	336	13
21/1/2010	1	290	13
22/1/2010	2	490	14
23/1/2010	*	*	*
24/1/2010	*	*	*
25/1/2010	6	432	22
26/1/2010	8	411	15
27/1/2010	8	467	17
28/1/2010	32	373	16
29/1/2010	24	423	19
30/1/2010	24	404	17
31/1/2010	25	421	19

Date	Daily Maximum		
	SO2 concentration (mg/Nm3) [#]	NOx concentration (mg/Nm3) [#]	Opacity (%)
1/2/2010	29	409	20
2/2/2010	20	327	15
3/2/2010	23	292	14
4/2/2010	24	381	14
5/2/2010	27	347	15
6/2/2010	16	390	13
7/2/2010	15	464	15
8/2/2010	16	512	14
9/2/2010	14	502	15
10/2/2010	17	423	15
11/2/2010	10	500	16
12/2/2010	*	*	*
13/2/2010	18	453	16
14/2/2010	15	432	19
15/2/2010	20	447	20
16/2/2010	20	462	21
17/2/2010	27	397	26
18/2/2010	19	436	10
19/2/2010	13	499	14
20/2/2010	14	462	17
21/2/2010	20	407	11
22/2/2010	14	450	14
23/2/2010	17	445	15
24/2/2010	18	483	26
25/2/2010	11	491	24
26/2/2010	19	420	23
27/2/2010	34	465	13
28/2/2010	23	434	11

Date	Daily Maximum		
	SO2 concentration (mg/Nm3) [#]	NOx concentration (mg/Nm3) [#]	Opacity (%)
1/3/2010	27	430	13
2/3/2010	24	472	21
3/3/2010	25	462	12
4/3/2010	35	398	13
5/3/2010	*	*	*
6/3/2010	*	*	*
7/3/2010	*	*	*
8/3/2010	*	*	*
9/3/2010	*	*	*
10/3/2010	*	*	*
11/3/2010	*	*	*
12/3/2010	*	*	*
13/3/2010	*	*	*
14/3/2010	*	*	*
15/3/2010	*	*	*
16/3/2010	*	*	*
17/3/2010	*	*	*
18/3/2010	*	*	*
19/3/2010	*	*	*
20/3/2010	*	*	*
21/3/2010	*	*	*
22/3/2010	*	*	*
23/3/2010	*	*	*
24/3/2010	*	*	*
25/3/2010	*	*	*
26/3/2010	*	*	*
27/3/2010	*	*	*
28/3/2010	*	*	*
29/3/2010	*	*	*
30/3/2010	*	*	*
31/3/2010	*	*	*

Note: # - Hourly average value. Expressed as at 0°C, 101.325kPa, dry and corrected to 12% CO₂ condition.

* - Unit L5 was not on load.

B.3 Ambient SO₂ and NO₂ monitoring Data at Southern District and Cheung Chau

THE HONGKONG ELECTRIC COMPANY, LTD.
AIR QUALITY DATA MONTHLY TIME SERIES REPORT

STATION : VICTORIA PEAK
POLLUTANT : SULPHUR DIOXIDE

MONTH: JANUARY

YEAR : 2010
UNIT : MICROGRAMS/CUBIC METER

DAY	1	2	3	4	5	6	7	8	9	10	11	12	13	14	15	16	17	18	19	20	21	22	23	24	MEAN
1	11	10	9	10	8	8	9	11	13	12	13	13	12	11	11	11	9	7	9	8	9	8	****	7	10
2	5	4	4	3	3	4	3	2	2	4	3	3	18	24	26	19	25	33	30	14	5	4	****	3	10
3	3	3	1	1	1	1	2	1	3	3	1	1	2	1	1	1	1	2	1	1	1	1	****	1	1
4	3	3	3	2	3	3	2	2	4	5	3	3	3	3	2	4	2	1	1	2	4	3	****	3	3
5	3	4	4	3	2	3	1	3	5	5	3	3	4	3	5	4	4	4	4	1	2	3	****	3	3
6	3	1	1	3	2	2	3	3	3	3	3	3	2	4	3	2	4	5	4	4	5	5	****	4	3
7	4	6	5	6	5	5	7	8	10	8	10	9	9	9	8	6	6	6	5	5	7	4	****	4	7
8	3	3	12	17	10	4	3	2	8	9	9	11	11	8	11	10	12	13	8	7	10	10	****	7	9
9	6	6	6	5	5	5	5	5	6	6	6	5	6	6	5	4	3	2	3	5	3	4	****	8	5
10	9	9	8	7	4	5	5	6	7	7	8	6	8	8	5	6	7	5	4	4	3	3	****	3	6
11	3	3	6	6	8	16	15	10	16	9	8	6	6	6	5	5	4	5	5	5	3	3	****	3	7
12	4	5	6	6	6	7	8	10	16	13	15	13	15	14	14	15	20	24	22	20	21	23	****	26	14
13	32	30	28	22	20	18	22	21	19	17	15	8	2	2	4	7	8	21	30	22	26	19	****	13	18
14	13	13	33	23	14	10	10	11	12	15	13	12	12	10	9	12	13	12	11	12	12	10	****	7	13
15	8	8	7	7	8	8	8	8	9	10	10	6	6	7	8	7	4	3	9	9	7	8	****	5	7
16	6	10	20	18	17	14	21	22	17	16	17	16	16	17	14	14	15	13	11	8	6	5	****	9	14
17	11	7	8	8	8	9	9	9	10	13	18	12	11	11	20	12	10	8	7	5	4	4	****	4	10
18	3	5	7	8	6	6	6	7	7	8	9	10	10	8	7	7	9	9	13	11	10	8	****	8	8
19	7	6	6	7	6	6	4	5	7	5	6	7	7	7	8	8	7	8	8	7	7	5	****	6	7
20	6	3	3	4	4	4	3	3	3	3	4	1	2	2	2	2	2	2	1	1	1	1	****	1	3
21	2	1	2	2	2	3	3	3	3	3	3	3	4	2	3	1	1	2	3	3	3	3	****	3	2
22	2	3	4	3	4	4	3	3	3	3	4	4	5	6	5	6	6	7	6	5	6	5	****	5	4
23	5	6	5	5	5	5	5	5	7	5	5	4	4	4	4	4	4	4	4	7	6	6	****	6	5
24	5	5	6	5	6	6	5	6	6	5	6	6	7	8	6	6	5	5	6	5	5	5	****	3	6
25	3	4	8	8	6	6	5	3	4	7	14	15	10	10	11	9	7	6	6	5	6	5	****	5	7
26	5	6	5	4	3	3	3	3	6	4	5	4	3	4	3	4	4	2	1	2	4	4	****	5	4
27	5	7	6	4	5	2	1	1	1	1	1	3	4	2	2	3	2	0	2	1	2	2	****	0	2
28	0	0	1	0	0	0	1	0	0	0	0	0	20	18	16	29	58	35	18	9	8	3	****	2	10
29	0	1	1	0	0	1	1	1	1	1	3	1	1	1	1	2	1	1	1	1	1	1	****	2	1
30	1	2	2	2	2	3	6	7	5	6	7	5	5	4	3	5	3	1	1	1	1	1	****	1	3
31	1	1	1	1	2	2	1	2	2	3	3	5	3	2	3	3	3	9	10	8	7	8	****	7	4

MONTHLY STATISTICS:

GEOM	ARITH	<-----PERCENTILE----->							<-----RANGE----->			STD GEOM	PERCENT	NO. OF TIMES ABOVE OBJECTIVE	
MEAN	MEDIAN	MEAN	50	90	95	98	99	1-HR	24-HR	DEVIATION	VALID DATA	1-HR	24-HR		
5	5	7	5	13	19	24	30	0	- 58	2	96	0	0		

- NOTES:
1. FLAGS FOR INVALID DATA :
 - **** : DAILY ZERO/SPAN CHECK
 - D : DYNAMIC CALIBRATION
 - T : TELEMETRY/DATALOGGR/ANALYZER FAULT
 - M : MAINTENANCE OR MACHINE SHUTDOWN
 - P : POWER FAILURE
 2. BRACKETED READINGS EXCEED 1-HR OBJECTIVE 800 OR 24-HR OBJECTIVE 350

THE HONGKONG ELECTRIC COMPANY, LTD.
AIR QUALITY DATA MONTHLY TIME SERIES REPORT

STATION : VICTORIA PEAK
 POLLUTANT : NITROGEN DIOXIDE
 MONTH: JANUARY
 YEAR : 2010
 UNIT : MICROGRAMS/CUBIC METER

DAY	1	2	3	4	5	6	7	8	9	10	11	12	13	14	15	16	17	18	19	20	21	22	23	24	MEAN
1	17	17	14	16	13	16	16	21	27	28	27	27	28	30	35	35	34	25	39	36	30	26	****	13	25
2	17	14	12	14	18	20	11	14	19	34	31	30	65	62	66	97	106	104	98	71	52	48	****	36	45
3	28	29	15	22	20	19	21	27	31	19	21	34	33	20	19	22	31	39	40	32	21	29	****	24	26
4	29	20	14	13	12	10	14	24	41	57	56	43	45	48	26	20	19	21	27	31	75	32	****	11	30
5	32	25	18	9	8	7	9	18	20	22	21	25	23	25	28	26	26	24	22	19	19	18	****	17	20
6	18	16	13	15	12	10	13	24	32	35	43	40	42	51	58	62	65	68	65	64	54	50	****	40	39
7	37	30	25	23	23	26	26	28	33	32	33	35	36	37	43	46	51	55	54	56	53	49	****	45	38
8	45	42	39	36	32	16	13	15	33	45	51	46	52	56	64	70	69	68	68	73	67	59	****	45	48
9	42	34	25	23	22	17	19	23	22	31	28	31	36	33	52	52	37	39	33	30	25	18	****	21	30
10	22	24	17	12	9	10	10	15	18	14	15	11	18	17	23	19	26	30	26	19	14	14	****	19	17
11	13	7	7	8	12	45	47	52	67	56	45	49	38	42	57	47	52	53	56	57	56	51	****	46	42
12	46	35	22	21	16	20	28	34	38	40	43	45	53	48	47	53	66	84	94	82	78	74	****	56	49
13	58	50	38	16	19	21	48	51	63	54	42	38	18	29	30	46	64	87	81	89	107	121	****	87	55
14	73	98	82	44	24	19	19	30	39	37	27	26	23	34	43	37	49	58	56	57	29	30	****	19	41
15	21	17	12	10	11	11	13	20	31	50	48	41	19	19	29	44	37	29	37	23	37	53	****	30	28
16	30	8	12	13	12	7	13	33	49	72	77	65	54	60	48	73	54	42	39	41	26	25	****	21	38
17	26	21	19	15	19	19	20	25	28	29	37	28	34	38	51	58	38	39	53	45	30	27	****	24	31
18	18	8	6	6	5	6	9	22	39	44	52	41	26	27	25	51	64	65	39	20	23	19	****	17	28
19	10	2	2	2	1	2	5	7	19	35	32	41	30	30	36	32	50	38	27	11	10	6	****	6	19
20	7	2	1	1	0	0	2	7	16	24	23	17	15	15	16	18	14	11	7	9	8	7	****	4	10
21	2	0	0	0	0	0	1	3	7	8	10	13	10	10	19	18	15	17	21	47	23	33	****	20	12
22	7	3	8	9	6	8	7	10	17	17	19	17	19	32	34	39	42	54	52	42	42	32	****	29	24
23	32	28	29	34	33	31	30	30	32	33	31	30	34	41	44	48	53	59	59	61	55	52	****	42	40
24	41	36	36	34	29	30	27	29	26	27	27	29	30	35	36	41	43	37	34	22	56	27	****	24	33
25	22	9	15	16	5	0	2	4	17	49	92	93	81	73	85	74	58	57	47	55	64	65	****	23	44
26	21	22	28	21	23	23	28	34	41	40	36	37	34	37	38	40	37	38	32	24	27	31	****	19	31
27	20	15	15	11	11	9	11	13	21	30	35	36	49	50	40	67	35	58	37	34	26	24	****	18	29
28	19	14	4	2	0	1	5	17	30	37	42	52	60	67	80	139	120	98	76	82	52	48	****	21	46
29	5	1	6	5	7	34	16	21	42	41	37	41	20	53	54	57	56	52	25	22	17	18	****	19	28
30	26	28	15	13	15	10	9	24	43	45	39	32	41	49	37	56	71	51	27	30	43	41	****	28	34
31	19	12	5	4	5	0	0	4	15	23	29	34	31	23	36	29	44	59	69	74	48	47	****	28	28

MONTHLY STATISTICS:

GEOM	ARITH	<-----PERCENTILE----->							<-----RANGE----->					STD GEOM	PERCENT	NO. OF TIMES ABOVE OBJECTIVE	
MEAN	MEDIAN	MEAN	50	90	95	98	99	1-HR	24-HR	DEVIATION	VALID DATA	1-HR	24-HR				
25	29	32	29	58	72	87	98	0	- 139	3	96	0	0				

- NOTES:
1. FLAGS FOR INVALID DATA :
 - **** : DAILY ZERO/SPAN CHECK
 - D : DYNAMIC CALIBRATION
 - T : TELEMETRY/DATALOGGR/ANALYZER FAULT
 - M : MAINTENANCE OR MACHINE SHUTDOWN
 - P : POWER FAILURE
 2. BRACKETED READINGS EXCEED 1-HR OBJECTIVE 300 OR 24-HR OBJECTIVE 150

THE HONGKONG ELECTRIC COMPANY, LTD.
AIR QUALITY DATA MONTHLY TIME SERIES REPORT

STATION : VICTORIA PEAK
POLLUTANT : SULPHUR DIOXIDE

MONTH: FEBRUARY

YEAR : 2010
UNIT : MICROGRAMS/CUBIC METER

DAY	1	2	3	4	5	6	7	8	9	10	11	12	13	14	15	16	17	18	19	20	21	22	23	24	MEAN
1	5	4	3	4	4	3	3	4	4	19	22	20	3	7	9	8	8	7	8	7	7	4	****	3	7
2	3	2	6	9	10	8	5	4	4	4	4	5	4	4	4	4	3	3	2	2	2	2	****	3	4
3	3	3	3	3	4	4	4	4	4	6	5	5	5	4	4	4	4	4	3	4	4	4	****	4	4
4	3	3	3	3	3	3	3	4	4	3	2	3	2	4	4	3	3	4	4	2	3	2	****	2	3
5	2	2	1	1	1	1	2	1	1	1	1	1	1	1	1	1	1	1	0	0	0	0	****	1	1
6	1	0	0	0	0	1	1	0	1	1	1	1	1	1	2	2	2	2	2	2	2	2	****	3	1
7	2	2	2	2	2	2	3	3	3	3	2	3	2	3	3	3	2	2	2	3	2	2	****	2	2
8	2	1	2	2	2	2	2	1	1	1	1	1	1	1	0	0	1	0	1	0	0	0	****	0	1
9	0	0	0	0	0	0	0	0	0	1	1	1	1	2	1	3	4	3	5	4	3	4	****	1	2
10	5	4	4	3	3	3	3	4	4	5	5	4	5	6	6	5	6	6	7	7	7	7	****	6	5
11	5	4	5	5	5	6	6	10	9	14	8	5	5	4	3	4	4	4	4	3	3	1	****	3	5
12	4	4	9	14	15	10	7	2	6	5	8	6	10	8	9	9	6	9	14	14	13	7	****	2	8
13	2	2	2	1	1	1	1	1	2	2	2	1	1	1	1	1	1	1	1	1	1	1	****	1	1
14	0	1	1	1	0	0	0	0	1	1	1	1	1	1	7	1	1	1	2	2	0	2	****	3	1
15	2	1	1	3	3	1	2	3	2	1	3	6	5	6	3	3	3	4	4	5	4	2	****	4	3
16	2	3	5	2	2	2	1	2	4	5	6	5	6	9	8	5	2	2	1	1	3	2	****	1	3
17	1	1	1	1	1	2	1	2	2	2	2	1	2	1	2	2	2	2	5	5	2	2	****	2	2
18	2	2	1	2	3	2	2	4	6	10	4	5	3	7	3	4	4	3	4	3	2	3	****	3	4
19	2	1	1	1	1	1	1	1	2	3	3	4	7	8	7	8	3	3	2	1	3	1	****	3	3
20	3	2	2	1	0	0	2	1	4	3	4	5	6	27	10	6	5	6	5	4	4	4	****	3	5
21	4	4	3	3	2	2	2	2	3	4	5	4	4	5	3	2	2	2	1	2	2	2	****	2	3
22	1	1	1	1	2	2	2	2	5	2	3	3	4	5	4	4	3	3	4	3	3	3	****	3	3
23	3	3	3	3	3	3	3	3	3	3	6	6	2	1	1	1	3	3	2	1	1	2	****	1	3
24	1	1	1	1	2	1	1	2	2	3	3	3	3	3	4	5	3	10	4	3	4	4	****	3	3
25	1	1	1	1	0	1	1	1	1	1	1	2	2	3	8	2	2	1	2	1	1	2	****	1	2
26	0	0	0	0	0	0	0	0	0	0	3	1	3	0	7	24	6	14	1	2	2	2	****	1	3
27	0	0	0	0	0	0	0	0	0	0	0	0	0	1	13	4	0	0	0	0	0	0	****	0	1
28	0	0	0	0	0	0	0	2	0	0	0	0	0	0	0	1	0	1	0	0	0	0	****	1	0

MONTHLY STATISTICS:

GEOM	ARITH					PERCENTILE					RANGE			STD GEOM	PERCENT	NO. OF TIMES ABOVE OBJECTIVE	
MEAN	MEDIAN	MEAN	50	90	95	98	99	1-HR	24-HR	DEVIATION	VALID DATA	1-HR	24-HR				
2	2	3	2	6	8	12	14	0	-	27	0	-	8	3	96	0	0

NOTES:

1. FLAGS FOR INVALID DATA :

- **** : DAILY ZERO/SPAN CHECK
- D : DYNAMIC CALIBRATION
- T : TELEMETRY/DATALOGGR/ANALYZER FAULT
- M : MAINTENANCE OR MACHINE SHUTDOWN
- P : POWER FAILURE

2. BRACKETED READINGS EXCEED 1-HR OBJECTIVE 800 OR 24-HR OBJECTIVE 350

THE HONGKONG ELECTRIC COMPANY, LTD.
AIR QUALITY DATA MONTHLY TIME SERIES REPORT

STATION : VICTORIA PEAK
POLLUTANT : NITROGEN DIOXIDE

MONTH: FEBRUARY

YEAR : 2010
UNIT : MICROGRAMS/CUBIC METER

DAY	1	2	3	4	5	6	7	8	9	10	11	12	13	14	15	16	17	18	19	20	21	22	23	24	MEAN
1	16	5	10	17	8	0	6	23	24	41	40	35	11	17	23	16	16	23	54	36	31	29	****	20	22
2	10	2	5	9	7	11	11	15	19	20	24	24	17	21	20	21	23	24	43	19	15	11	****	6	17
3	6	8	5	3	1	4	8	15	32	42	45	33	26	29	30	29	28	26	27	21	23	17	****	11	20
4	10	9	7	2	5	2	5	14	22	35	37	38	28	24	32	38	45	34	20	17	22	14	****	20	21
5	23	4	9	3	3	4	7	8	27	28	31	30	25	25	24	34	37	20	14	13	11	8	****	14	18
6	8	12	10	6	5	1	3	10	32	40	36	33	29	42	33	40	24	30	25	17	14	12	****	15	21
7	11	12	10	6	11	8	9	11	13	18	24	21	22	16	18	31	17	12	16	33	18	18	****	4	16
8	6	0	0	0	0	0	0	1	12	24	39	31	29	30	44	55	56	35	17	17	16	12	****	4	19
9	3	2	0	0	0	0	1	4	13	17	23	21	18	18	18	19	24	22	18	15	17	15	****	6	12
10	12	8	3	1	0	1	5	10	18	25	34	33	16	27	30	35	30	27	14	13	11	12	****	5	16
11	2	0	0	1	1	14	24	19	27	41	27	18	14	15	18	20	16	21	19	17	14	8	****	16	15
12	20	20	34	38	39	35	28	21	37	40	42	44	44	44	44	49	52	54	49	49	49	47	****	40	40
13	36	36	31	25	21	13	10	15	16	16	15	15	11	12	18	13	12	12	18	7	7	****	2	16	
14	1	5	4	2	3	4	8	7	11	13	16	25	36	45	42	25	41	46	42	36	33	41	****	41	23
15	39	35	33	30	25	17	21	23	18	25	30	27	30	30	32	41	52	42	45	40	42	36	****	38	33
16	33	26	26	16	10	11	16	40	45	40	36	33	44	48	53	45	45	42	38	41	50	40	****	30	35
17	30	25	21	18	14	10	13	29	36	44	42	35	32	30	29	32	41	43	55	52	55	48	****	51	34
18	46	32	21	17	17	20	20	38	48	52	43	47	45	47	47	54	61	60	55	53	51	50	****	53	42
19	46	33	32	26	16	12	4	35	31	57	51	60	62	60	54	57	63	69	71	68	69	62	****	48	47
20	48	40	30	20	25	18	18	26	37	47	49	57	51	56	52	49	67	82	79	74	52	61	****	47	47
21	41	29	22	19	11	12	14	11	23	30	36	39	34	32	36	34	34	24	11	12	16	13	****	8	24
22	5	2	1	0	0	6	3	20	27	34	29	44	74	74	77	76	51	36	61	60	36	20	****	6	32
23	3	2	0	1	4	5	6	17	19	67	61	37	30	40	39	47	62	45	32	18	33	21	****	11	26
24	10	3	5	1	2	3	6	11	27	39	31	33	20	28	38	31	31	37	18	14	19	11	****	8	18
25	6	3	2	2	1	0	2	8	22	28	24	24	21	24	27	23	26	22	16	15	14	12	****	10	14
26	5	4	11	16	11	19	11	17	23	26	30	20	23	12	20	34	24	37	15	21	24	20	****	11	19
27	6	6	4	3	17	11	6	17	24	28	25	18	16	22	36	29	28	28	26	33	26	20	****	11	19
28	8	5	4	5	9	4	6	13	12	14	21	24	13	11	9	24	17	18	17	18	15	14	****	8	13

MONTHLY STATISTICS:

GEOM		ARITH	<-----PERCENTILE----->					<-----RANGE----->			STD GEOM	PERCENT	NO. OF TIMES ABOVE OBJECTIVE				
MEAN	MEDIAN	MEAN	50	90	95	98	99	1-HR		24-HR	DEVIATION	VALID DATA	1-HR	24-HR			
17	21	24	21	48	55	65	73	0	-	82	12	-	47	3	96	0	0

- NOTES:
1. FLAGS FOR INVALID DATA :
 - **** : DAILY ZERO/SPAN CHECK
 - D : DYNAMIC CALIBRATION
 - T : TELEMETRY/DATALOGGR/ANALYZER FAULT
 - M : MAINTENANCE OR MACHINE SHUTDOWN
 - P : POWER FAILURE
 2. BRACKETED READINGS EXCEED 1-HR OBJECTIVE 300 OR 24-HR OBJECTIVE 150

THE HONGKONG ELECTRIC COMPANY, LTD.
AIR QUALITY DATA MONTHLY TIME SERIES REPORT

STATION : VICTORIA PEAK
POLLUTANT : SULPHUR DIOXIDE

MONTH: MARCH

YEAR : 2010
UNIT : MICROGRAMS/CUBIC METER

DAY	1	2	3	4	5	6	7	8	9	10	11	12	13	14	15	16	17	18	19	20	21	22	23	24	MEAN
1	0	0	1	1	1	0	0	1	1	0	0	0	0	0	0	0	0	0	0	0	2	1	****	2	0
2	1	1	0	0	1	2	1	1	1	2	2	1	0	1	1	0	0	1	1	0	0	1	****	4	1
3	1	1	1	2	1	1	0	1	1	0	0	0	0	1	0	0	0	0	0	0	0	0	****	0	0
4	0	0	0	0	0	1	0	0	0	0	1	0	0	0	1	1	1	2	1	3	3	2	****	2	1
5	1	1	2	1	0	1	2	4	4	3	5	3	2	1	1	2	2	2	1	1	1	1	****	1	2
6	1	1	1	1	1	2	2	3	5	6	3	3	3	3	2	2	4	2	2	3	2	1	****	2	2
7	3	2	2	2	4	13	9	5	7	7	5	4	2	2	1	1	1	1	1	2	1	1	****	2	3
8	1	1	1	0	0	1	0	1	1	0	1	0	0	0	0	0	1	0	1	4	3	1	****	1	1
9	1	1	0	0	0	0	0	0	1	1	1	0	1	1	2	1	1	1	2	3	1	2	****	5	1
10	6	5	7	13	15	16	17	17	19	20	19	<-----D----->					21	26	23	19	21	18	****	11	16
11	12	13	13	32	18	23	8	7	8	9	9	10	12	14	11	10	10	9	8	7	6	4	****	3	11
12	1	2	5	5	6	5	3	2	2	4	4	5	4	3	2	2	2	2	1	1	1	1	****	2	3
13	2	1	0	2	1	1	1	1	1	1	1	2	2	2	1	2	2	3	3	3	3	3	****	1	2
14	1	1	0	1	1	0	0	0	0	1	0	0	0	0	0	0	0	0	0	0	0	0	****	0	0
15	0	1	1	1	2	1	1	2	2	2	2	1	1	3	2	15	17	7	8	1	1	1	****	3	3
16	4	6	23	34	39	32	30	17	24	16	9	7	6	6	7	6	7	7	5	5	4	3	****	5	13
17	3	3	4	5	4	5	5	7	6	6	5	8	7	7	6	5	7	7	20	30	43	31	****	30	11
18	45	43	42	37	42	51	64	66	59	74	81	98	85	70	58	55	47	42	18	15	16	15	****	14	49
19	9	7	7	6	7	9	10	11	8	9	8	7	7	6	7	7	8	7	11	11	10	5	****	11	8
20	55	11	5	4	3	1	0	2	1	1	9	2	3	3	5	6	6	6	7	8	14	16	****	19	8
21	23	27	32	42	82	78	57	51	45	43	95	86	75	43	32	21	11	10	9	8	6	5	****	4	38
22	4	3	4	5	3	3	2	3	3	3	2	2	4	2	1	1	2	0	0	0	0	0	****	0	2
23	0	0	1	0	0	0	0	0	0	0	0	0	0	0	0	0	0	0	1	1	1	2	****	2	0
24	2	1	2	0	1	1	1	2	2	2	2	2	2	2	3	3	2	2	2	3	3	2	****	9	2
25	23	19	9	4	3	3	3	4	8	10	13	11	12	8	9	11	12	10	7	8	9	9	****	8	9
26	9	9	11	12	12	13	12	13	25	21	19	18	14	15	12	12	14	15	15	15	14	14	****	13	14
27	11	10	10	10	9	8	9	11	10	10	12	13	19	22	19	27	32	36	35	43	31	27	****	27	19
28	24	22	21	23	22	21	21	16	19	25	26	27	20	18	19	14	14	14	11	10	9	6	****	8	18
29	7	5	6	8	10	10	11	11	10	13	12	11	10	10	11	12	10	9	8	6	6	7	****	4	9
30	4	3	3	3	2	3	2	2	2	2	3	4	4	2	1	3	2	2	3	2	2	1	****	2	3
31	1	1	1	0	1	1	1	0	0	0	1	2	2	3	1	1	1	1	1	2	0	1	****	1	1

MONTHLY STATISTICS:

GEOM	ARITH	-----PERCENTILE-----					-----RANGE-----			STD GEOM	PERCENT	NO. OF TIMES	
MEAN	MEDIAN	50	90	95	98	99	1-HR	24-HR	DEVIATION	VALID DATA	1-HR	24-HR	
3	3	3	21	33	56	75	0	- 98	5	95	0	0	

- NOTES:
1. FLAGS FOR INVALID DATA :
 - **** : DAILY ZERO/SPAN CHECK
 - D : DYNAMIC CALIBRATION
 - T : TELEMETRY/DATALOGGR/ANALYZER FAULT
 - M : MAINTENANCE OR MACHINE SHUTDOWN
 - P : POWER FAILURE
 2. BRACKETED READINGS EXCEED 1-HR OBJECTIVE 800 OR 24-HR OBJECTIVE 350

THE HONGKONG ELECTRIC COMPANY, LTD.
AIR QUALITY DATA MONTHLY TIME SERIES REPORT

STATION : VICTORIA PEAK
POLLUTANT : NITROGEN DIOXIDE

MONTH: MARCH

YEAR : 2010
UNIT : MICROGRAMS/CUBIC METER

DAY	1	2	3	4	5	6	7	8	9	10	11	12	13	14	15	16	17	18	19	20	21	22	23	24	MEAN
1	6	3	2	3	1	1	5	13	17	19	17	18	17	17	23	34	34	28	18	20	19	17	****	14	15
2	12	2	1	0	7	8	4	11	23	33	40	38	22	28	36	38	44	34	23	17	12	9	****	16	20
3	8	2	4	8	2	1	3	16	28	25	28	33	15	23	32	26	31	21	13	12	12	10	****	10	16
4	6	3	6	8	6	13	9	11	25	31	34	24	14	28	36	32	39	25	18	23	23	17	****	13	19
5	11	7	8	5	1	2	7	18	18	22	27	23	11	20	22	22	26	25	11	10	9	6	****	5	14
6	6	2	1	0	1	8	9	15	27	39	32	23	19	17	18	19	18	20	19	17	15	15	****	10	15
7	13	7	5	21	26	33	33	30	31	31	32	32	27	26	24	28	26	28	25	30	22	18	****	19	25
8	23	19	15	12	11	9	14	21	23	27	21	22	17	21	34	44	49	44	45	44	41	39	****	26	27
9	25	21	14	11	9	7	11	25	35	47	53	35	25	25	23	25	21	29	32	42	33	35	****	25	26
10	22	14	6	7	8	8	15	34	48	62	64	<-----D----->					48	62	62	60	81	94	****	45	41
11	59	11	30	71	44	51	19	35	49	49	43	37	50	35	37	44	65	88	70	65	57	24	****	14	46
12	1	11	12	5	5	5	2	3	35	88	86	74	71	79	69	81	92	89	35	14	9	4	****	12	38
13	14	10	3	1	6	5	1	14	21	40	31	23	20	31	36	32	35	53	34	32	17	17	****	14	21
14	14	11	5	3	4	7	7	8	10	16	20	19	23	19	17	23	29	36	30	24	22	23	****	12	17
15	10	5	3	2	4	4	9	15	30	25	26	15	19	29	17	24	27	24	26	23	6	1	****	2	15
16	2	15	44	43	43	41	38	33	43	53	48	42	38	39	44	47	48	49	46	43	37	20	****	3	37
17	1	0	0	0	0	0	2	15	33	37	49	49	47	55	57	70	95	108	124	125	126	121	****	101	53
18	131	125	117	89	72	83	96	99	100	102	107	108	114	115	87	88	111	160	131	141	134	144	****	61	109
19	19	8	8	11	0	0	5	12	20	29	27	17	29	36	35	44	40	54	53	75	37	19	****	12	26
20	51	2	0	1	0	0	1	9	17	38	55	22	21	20	25	25	28	33	33	50	41	47	****	61	25
21	64	55	59	33	43	40	25	44	41	76	117	118	103	53	45	32	23	25	16	13	13	15	****	12	46
22	10	7	4	4	4	6	6	22	31	28	21	22	57	80	50	61	64	30	12	13	12	19	****	13	25
23	11	5	7	0	0	0	2	17	17	28	35	20	26	17	37	23	17	20	19	20	24	5	****	1	15
24	2	0	2	0	0	0	5	16	28	21	20	22	20	22	21	23	18	22	25	28	20	23	****	26	16
25	41	35	29	23	20	16	16	26	37	52	48	40	43	43	48	51	56	59	49	53	45	38	****	34	39
26	30	19	13	12	10	8	17	51	80	70	56	52	18	35	20	22	29	35	26	35	30	16	****	6	30
27	9	4	6	3	3	1	5	24	55	70	105	85	63	78	86	88	117	135	149	148	149	146	****	135	72
28	130	113	98	67	42	41	35	39	48	50	58	54	41	38	32	23	22	38	24	19	17	9	****	16	46
29	12	2	1	1	0	0	5	8	51	67	50	63	45	31	39	58	65	59	11	6	3	5	****	1	25
30	1	0	0	0	0	0	1	9	21	27	25	20	15	21	14	13	15	13	5	7	4	2	****	2	9
31	0	0	0	0	0	0	1	7	25	39	40	23	19	16	12	9	12	11	12	17	17	18	****	5	12

MONTHLY STATISTICS:

GEOM	ARITH	<-----PERCENTILE----->					<-----RANGE----->			STD GEOM	PERCENT	NO. OF TIMES	
MEAN	MEDIAN	50	90	95	98	99	1-HR		24-HR	DEVIATION	VALID DATA	1-HR	24-HR
19	22	22	65	97	125	135	0	-	160	3	95	0	0

- NOTES:
1. FLAGS FOR INVALID DATA :
 - **** : DAILY ZERO/SPAN CHECK
 - D : DYNAMIC CALIBRATION
 - T : TELEMETRY/DATALOGGR/ANALYZER FAULT
 - M : MAINTENANCE OR MACHINE SHUTDOWN
 - P : POWER FAILURE
 2. BRACKETED READINGS EXCEED 1-HR OBJECTIVE 300 OR 24-HR OBJECTIVE 150

THE HONGKONG ELECTRIC COMPANY, LTD.
AIR QUALITY DATA MONTHLY TIME SERIES REPORT

STATION : CHUNG HOM KOK ZONE SUBSTATION MONTH: JANUARY YEAR : 2010
 POLLUTANT : SULPHUR DIOXIDE UNIT : MICROGRAMS/CUBIC METER

DAY	1	2	3	4	5	6	7	8	9	10	11	12	13	14	15	16	17	18	19	20	21	22	23	24	MEAN
1	2	2	0	0	0	2	5	8	12	10	11	13	10	8	9	9	9	8	6	5	8	8	****	5	7
2	7	7	4	3	3	3	7	3	3	3	4	6	2	0	0	14	91	32	10	5	0	0	****	0	9
3	0	0	0	0	0	0	0	0	0	0	0	0	0	0	0	0	0	3	0	0	0	0	****	0	0
4	0	0	1	1	0	0	0	2	0	0	3	4	7	1	0	2	2	5	0	2	3	6	****	6	2
5	2	2	0	4	0	0	0	2	7	2	0	1	0	2	1	0	0	1	3	2	1	3	****	2	2
6	0	0	0	0	0	0	0	0	2	0	0	0	0	1	0	0	0	0	2	0	0	0	****	3	0
7	0	1	1	6	2	4	5	6	8	3	3	3	3	4	0	0	0	1	0	0	0	0	****	1	2
8	0	0	0	4	0	0	0	0	0	5	13	19	22	18	9	9	1	1	1	6	14	8	****	3	6
9	1	0	1	2	0	0	0	1	1	0	0	0	0	0	0	0	1	4	1	1	0	0	****	4	1
10	6	7	6	4	0	0	0	0	1	0	1	4	4	0	0	0	0	0	0	0	0	0	****	0	1
11	0	6	10	8	5	5	7	1	4	8	1	0	0	0	0	0	0	0	1	0	0	0	****	3	3
12	1	4	5	4	2	0	0	4	7	5	4	8	11	14	10	11	13	15	16	14	17	18	****	18	9
13	18	20	19	18	13	11	10	8	9	7	6	5	6	6	5	7	6	10	9	11	13	12	****	10	10
14	12	21	20	14	9	5	1	4	8	6	5	5	5	10	6	6	6	6	7	8	9	3	****	3	8
15	2	2	4	6	2	1	3	6	8	5	5	6	9	10	4	0	2	5	20	4	2	3	****	2	5
16	0	3	19	17	18	14	21	23	16	10	11	11	9	11	9	15	8	4	6	1	1	0	****	2	10
17	4	0	0	1	4	0	4	4	9	9	5	1	0	6	11	7	4	2	4	2	0	0	****	1	3
18	0	0	1	3	4	0	2	1	1	3	0	1	3	3	6	9	6	8	8	5	3	0	****	0	3
19	1	0	0	0	0	0	0	0	0	0	0	0	0	0	1	0	0	0	0	1	0	0	****	2	0
20	1	0	0	0	0	0	0	0	0	0	0	0	0	0	0	0	0	0	0	0	0	0	****	0	0
21	0	0	0	0	0	0	0	1	0	0	1	1	0	0	0	0	1	0	0	0	0	3	****	0	0
22	0	0	3	0	1	1	0	0	0	1	0	0	0	1	2	2	2	0	0	0	0	1	****	0	1
23	0	0	0	1	0	0	0	2	0	0	0	0	0	0	0	0	0	0	0	0	0	0	****	0	0
24	0	0	0	0	0	1	6	9	5	5	5	6	7	4	2	0	0	1	0	0	0	0	****	0	2
25	0	0	7	18	31	31	20	34	33	33	66	46	28	26	1	0	0	0	0	0	0	0	****	0	16
26	0	0	1	2	0	0	0	0	1	0	0	0	0	0	0	0	0	0	0	0	3	2	****	3	1
27	3	4	3	3	0	0	0	1	4	0	<-----D----->		3	0	0	0	0	1	3	0	0	0	****	0	1
28	0	0	0	0	0	0	0	0	0	0	0	1	0	1	0	0	0	40	25	4	18	12	****	10	5
29	1	0	0	0	0	0	0	0	0	0	0	0	0	0	2	0	0	0	0	0	0	0	****	0	0
30	0	0	0	0	1	9	12	12	7	9	8	2	1	1	0	0	0	0	0	0	0	0	****	0	3
31	0	0	0	0	0	0	0	0	0	0	0	0	4	3	0	7	1	0	4	12	19	13	****	0	3

MONTHLY STATISTICS:

GEOM		ARITH	<-----PERCENTILE----->					<-----RANGE----->			STD GEOM	PERCENT	NO. OF TIMES ABOVE OBJECTIVE	
MEAN	MEDIAN	MEAN	50	90	95	98	99	1-HR	24-HR	DEVIATION	VALID DATA	1-HR	24-HR	
3	1	4	1	10	16	22	32	0	- 91	5	95	0	0	

- NOTES:
1. FLAGS FOR INVALID DATA :
 - **** : DAILY ZERO/SPAN CHECK
 - D : DYNAMIC CALIBRATION
 - T : TELEMETRY/DATALOGGR/ANALYZER FAULT
 - M : MAINTENANCE OR MACHINE SHUTDOWN
 - P : POWER FAILURE
 2. BRACKETED READINGS EXCEED 1-HR OBJECTIVE 800 OR 24-HR OBJECTIVE 350

THE HONGKONG ELECTRIC COMPANY, LTD.
AIR QUALITY DATA MONTHLY TIME SERIES REPORT

STATION : CHUNG HOM KOK ZONE SUBSTATION MONTH: JANUARY YEAR : 2010
 POLLUTANT : NITROGEN DIOXIDE UNIT : MICROGRAMS/CUBIC METER

DAY	1	2	3	4	5	6	7	8	9	10	11	12	13	14	15	16	17	18	19	20	21	22	23	24	MEAN
1	12	9	9	8	9	10	10	14	15	16	17	15	19	16	16	16	16	18	16	11	16	14	****	11	14
2	11	11	9	9	9	12	13	15	16	13	18	17	22	26	28	42	92	84	64	57	31	9	****	11	27
3	15	14	11	9	6	7	5	8	11	13	14	8	13	12	14	15	8	13	6	5	8	6	****	6	10
4	8	7	8	9	8	6	6	11	12	9	13	15	18	16	16	16	13	20	15	13	12	16	****	12	12
5	10	10	8	9	9	9	9	13	13	13	12	14	14	17	18	16	16	17	17	17	17	16	****	12	13
6	13	12	11	10	11	9	10	13	15	14	14	14	15	16	21	24	38	41	40	22	19	20	****	16	18
7	18	18	16	17	16	18	20	18	18	17	15	18	17	18	20	21	23	26	23	23	22	19	****	21	19
8	21	23	37	35	31	23	25	28	29	37	41	43	44	45	42	40	25	26	19	26	29	21	****	22	31
9	21	18	17	15	12	11	11	12	13	12	12	14	9	9	10	9	11	20	13	12	11	9	****	16	13
10	13	9	9	10	10	9	9	11	11	10	11	13	14	13	11	16	15	11	16	14	8	9	****	8	11
11	9	9	9	7	6	19	28	17	33	48	43	43	47	29	37	46	49	44	47	46	43	42	****	31	32
12	25	17	15	13	17	15	20	27	31	27	29	33	36	36	41	44	42	48	35	35	40	19	****	12	29
13	12	10	9	10	14	15	14	18	20	16	19	16	12	12	13	19	23	21	18	25	19	23	****	15	16
14	14	22	27	20	16	14	11	17	20	17	17	15	14	14	11	12	13	11	12	12	18	10	****	11	15
15	8	7	6	6	8	8	8	10	12	10	13	15	14	19	13	15	12	10	33	21	11	13	****	11	12
16	9	8	10	11	10	7	17	16	18	30	21	20	20	21	26	21	18	17	11	10	10	8	****	9	15
17	8	7	8	10	14	12	14	13	16	14	16	13	14	19	24	21	26	17	12	14	12	11	****	9	14
18	8	6	6	5	6	6	9	13	16	12	14	16	18	19	17	16	18	22	16	12	10	10	****	8	12
19	8	6	6	6	6	6	6	9	12	15	16	14	13	11	12	13	10	9	9	7	7	8	****	8	9
20	7	5	4	4	4	5	5	9	9	9	11	12	9	13	10	12	16	10	10	10	10	8	****	5	9
21	5	4	4	4	4	5	7	18	16	17	15	11	11	9	13	12	16	16	12	12	13	24	****	20	12
22	13	7	15	13	10	10	10	18	16	16	16	15	13	14	16	23	19	18	16	15	17	17	****	19	15
23	19	19	22	28	28	27	27	27	23	22	20	18	18	20	20	20	21	28	27	31	28	27	****	20	24
24	22	23	23	22	22	22	21	20	19	19	18	19	21	21	20	20	20	19	17	14	16	17	****	11	19
25	12	13	39	59	65	63	61	61	63	70	81	85	81	76	40	26	25	38	45	34	35	27	****	13	48
26	14	14	15	18	17	16	14	16	20	15	17	17	15	15	17	17	18	16	17	14	16	15	****	14	16
27	16	15	13	12	11	11	12	17	17	13	<----- D ----->		11	9	10	9	9	9	10	7	11	****	7	12	
28	8	5	5	4	5	4	7	11	15	26	20	18	13	14	21	30	43	77	75	58	76	75	****	63	29
29	53	33	52	45	35	15	10	9	11	12	10	10	12	12	12	11	12	15	15	13	13	11	****	9	19
30	9	8	8	9	9	10	11	11	12	15	14	15	15	13	11	16	21	31	17	23	19	18	****	10	14
31	8	5	4	4	5	5	7	13	17	17	16	18	18	17	15	14	9	18	32	37	27	22	****	11	15

MONTHLY STATISTICS:

GEOM	ARITH	<-----PERCENTILE----->							<-----RANGE----->			STD GEOM	PERCENT	NO. OF TIMES ABOVE OBJECTIVE	
MEAN	MEDIAN	MEAN	50	90	95	98	99	1-HR	24-HR	DEVIATION	VALID DATA	1-HR	24-HR		
15	15	18	15	32	44	63	76	4	- 92	2	95	0	0		

- NOTES:
1. FLAGS FOR INVALID DATA :
 - **** : DAILY ZERO/SPAN CHECK
 - D : DYNAMIC CALIBRATION
 - T : TELEMETRY/DATALOGGR/ANALYZER FAULT
 - M : MAINTENANCE OR MACHINE SHUTDOWN
 - P : POWER FAILURE
 2. BRACKETED READINGS EXCEED 1-HR OBJECTIVE 300 OR 24-HR OBJECTIVE 150

THE HONGKONG ELECTRIC COMPANY, LTD.
AIR QUALITY DATA MONTHLY TIME SERIES REPORT

STATION : CHUNG HOM KOK ZONE SUBSTATION
POLLUTANT : SULPHUR DIOXIDE

MONTH: FEBRUARY

YEAR : 2010
UNIT : MICROGRAMS/CUBIC METER

DAY	1	2	3	4	5	6	7	8	9	10	11	12	13	14	15	16	17	18	19	20	21	22	23	24	MEAN
1	12	5	0	0	2	0	18	31	8	8	59	65	48	36	35	78	26	12	48	38	30	12	****	35	26
2	28	14	6	19	10	4	1	0	0	0	0	0	0	0	0	0	0	0	0	0	0	0	****	0	4
3	0	0	0	0	0	0	0	1	0	0	0	0	0	0	0	0	0	0	0	0	0	0	****	0	0
4	0	0	0	0	0	0	0	0	0	0	0	0	0	0	0	0	0	0	0	0	0	0	****	0	0
5	0	0	0	0	0	0	0	0	0	0	0	0	0	0	0	0	0	0	0	0	0	0	****	0	0
6	0	0	0	0	0	0	0	0	0	0	0	0	0	0	0	0	0	0	0	0	0	0	****	0	0
7	0	0	0	0	0	0	0	0	0	0	0	0	0	0	0	0	0	0	0	0	0	0	****	0	0
8	0	0	0	0	0	0	0	0	0	0	0	0	0	0	0	0	0	0	0	0	0	0	****	0	0
9	0	0	0	0	0	0	0	0	0	0	0	0	0	0	0	2	7	1	3	6	1	2	****	1	1
10	4	8	1	4	0	0	6	0	3	5	6	3	0	2	2	5	4	3	3	2	13	4	****	6	4
11	13	12	3	0	0	3	5	0	1	0	3	3	0	0	7	1	9	5	4	1	7	3	****	1	3
12	4	7	10	14	24	15	8	2	2	3	0	31	10	0	0	0	0	0	0	0	0	0	****	0	6
13	0	0	0	0	0	0	0	0	0	0	0	0	0	0	0	0	0	0	0	0	0	0	****	0	0
14	0	0	0	0	0	0	0	0	0	0	0	0	0	0	0	0	3	0	0	1	18	3	****	10	1
15	14	5	1	2	1	0	0	0	0	0	0	4	0	0	0	0	0	1	0	0	0	0	****	0	1
16	0	0	0	0	0	0	0	0	0	0	0	0	0	0	0	0	0	0	0	0	0	0	****	0	0
17	0	0	0	0	0	0	0	0	0	0	0	0	0	0	0	0	0	0	0	0	0	0	****	0	0
18	0	0	0	0	0	0	0	0	0	0	0	0	0	0	0	0	0	0	0	0	0	0	****	0	0
19	0	0	0	0	0	0	0	0	0	0	0	3	0	0	2	6	1	0	0	0	1	0	****	4	1
20	1	2	0	0	0	1	1	0	0	0	5	0	0	0	0	3	0	0	0	1	2	1	****	0	1
21	0	0	0	0	0	0	0	0	0	0	0	0	0	0	0	0	0	0	0	0	4	2	****	0	0
22	0	1	0	0	0	0	0	0	0	0	0	3	1	0	0	0	0	0	0	1	0	****	0	0	
23	0	0	0	1	0	0	0	0	2	41	10	1	1	0	0	5	10	4	2	2	0	0	****	2	3
24	0	0	0	0	0	0	0	0	0	1	0	0	0	0	0	0	0	3	1	0	0	0	****	0	0
25	3	1	7	4	14	1	6	3	9	2	3	10	3	6	2	5	16	10	14	2	2	0	****	4	6
26	3	0	0	4	0	1	6	0	4	3	0	0	5	5	7	0	0	0	2	0	2	1	****	5	2
27	1	0	0	19	6	0	3	1	3	7	17	10	3	6	1	24	6	6	15	6	3	2	****	0	6
28	0	0	0	1	0	0	0	0	0	0	4	0	0	0	0	0	0	0	0	0	0	0	****	0	0

MONTHLY STATISTICS:

GEOM	ARITH	<-----PERCENTILE----->					<-----RANGE----->			STD GEOM	PERCENT	NO. OF TIMES ABOVE OBJECTIVE	
MEAN	MEDIAN	MEAN	50	90	95	98	99	1-HR	24-HR	DEVIATION	VALID DATA	1-HR	24-HR
3	0	2	0	6	12	29	37	0	- 78	4	96	0	0

- NOTES:
1. FLAGS FOR INVALID DATA :
 - **** : DAILY ZERO/SPAN CHECK
 - D : DYNAMIC CALIBRATION
 - T : TELEMETRY/DATALOGGR/ANALYZER FAULT
 - M : MAINTENANCE OR MACHINE SHUTDOWN
 - P : POWER FAILURE
 2. BRACKETED READINGS EXCEED 1-HR OBJECTIVE 800 OR 24-HR OBJECTIVE 350

THE HONGKONG ELECTRIC COMPANY, LTD.
AIR QUALITY DATA MONTHLY TIME SERIES REPORT

STATION : CHUNG HOM KOK ZONE SUBSTATION
POLLUTANT : SULPHUR DIOXIDE

MONTH: MARCH

YEAR : 2010
UNIT : MICROGRAMS/CUBIC METER

DAY	1	2	3	4	5	6	7	8	9	10	11	12	13	14	15	16	17	18	19	20	21	22	23	24	MEAN	
1	0	0	0	0	0	0	0	0	0	0	0	0	0	0	0	0	0	0	0	0	0	0	****	0	0	
2	0	0	0	0	0	0	0	1	2	0	0	0	0	0	0	0	9	13	6	6	2	0	1	****	1	2
3	0	0	0	0	0	0	0	0	0	0	1	1	0	0	0	0	1	1	0	0	0	0	0	****	1	0
4	0	2	1	0	0	0	0	0	0	1	2	0	0	0	3	1	7	0	0	1	1	0	****	1	1	
5	0	3	3	0	2	0	0	3	3	0	0	1	0	1	0	0	0	0	6	6	1	6	****	0	2	
6	0	0	3	4	2	5	0	1	5	1	6	12	10	7	0	0	2	2	0	1	2	0	****	0	3	
7	0	4	14	20	7	16	27	14	14	9	5	0	0	0	0	0	0	0	0	0	0	0	****	0	6	
8	0	0	0	0	0	0	0	0	0	0	0	0	0	0	0	0	0	0	0	0	0	0	****	0	0	
9	0	0	0	0	0	0	0	0	0	0	0	0	0	0	0	0	0	0	0	0	0	0	****	0	0	
10	1	2	6	13	14	13	13	12	9	8	7	7	6	4	9	11	14	13	11	22	30	19	****	7	11	
11	13	13	12	8	9	7	4	4	2	0	3	11	9	5	6	6	9	6	5	4	4	5	****	2	6	
12	1	2	5	4	4	0	1	2	1	0	0	0	0	0	0	0	0	0	0	0	0	0	****	0	1	
13	0	0	0	0	0	0	0	0	0	0	0	0	0	0	0	0	2	3	2	0	0	0	****	0	0	
14	0	0	0	0	0	0	0	0	0	1	0	0	0	0	0	0	0	0	0	0	0	0	****	0	0	
15	0	0	0	0	0	0	0	0	0	0	0	0	1	3	0	0	0	0	0	0	0	0	****	1	0	
16	5	48	36	27	42	45	38	28	13	3	1	0	1	2	4	1	0	0	0	0	0	0	****	0	13	
17	0	0	0	0	0	0	0	0	0	2	0	3	7	6	7	5	2	3	5	4	8	****	8	3		
18	49	40	45	33	38	41	28	23	17	29	106	114	53	21	15	M	4	4	4	6	8	16	****	11	32	
19	9	9	4	3	1	2	6	0	4	0	0	2	4	1	3	4	0	1	6	11	16	****	15	5		
20	11	7	6	0	0	0	1	24	4	17	1	8	8	33	10	15	49	53	28	25	25	105	****	52	21	
21	45	38	44	42	43	36	163	171	95	143	175	91	57	57	46	32	4	4	1	0	0	1	****	0	56	
22	0	0	0	0	0	0	0	0	0	0	0	2	2	4	3	1	0	1	0	0	0	0	****	0	1	
23	0	0	0	0	0	0	0	0	0	0	0	0	0	0	0	0	0	0	0	0	0	0	****	0	0	
24	0	0	0	0	0	0	0	0	0	0	0	0	0	0	3	0	0	4	0	0	0	0	****	1	0	
25	14	15	4	0	0	0	0	0	0	0	0	0	0	0	2	0	0	0	0	0	0	0	****	0	2	
26	0	0	0	3	6	8	5	7	7	9	8	5	1	4	5	4	4	3	3	8	6	4	****	0	4	
27	1	1	0	0	0	2	1	0	0	2	1	5	8	8	8	3	4	3	5	9	5	****	8	3		
28	8	12	18	18	21	20	14	11	11	13	18	24	26	18	11	7	10	5	3	3	3	1	****	0	12	
29	0	1	2	1	3	3	7	5	4	6	2	4	2	0	0	0	0	0	0	0	0	0	****	0	2	
30	0	0	0	0	0	0	0	0	0	0	0	0	0	0	0	0	0	0	0	0	0	0	****	0	0	
31	0	0	0	0	0	0	0	0	0	0	0	1	7	9	1	0	0	0	1	1	0	0	****	1	1	

MONTHLY STATISTICS:

GEOM	ARITH	<-----PERCENTILE----->					<-----RANGE----->				STD GEOM	PERCENT	NO. OF TIMES			
MEAN	MEDIAN	50	90	95	98	99	1-HR			24-HR	DEVIATION	VALID DATA	1-HR	24-HR		
4	0	0	14	30	49	93	0	-	175	0	-	56	5	96	0	0

- NOTES:
1. FLAGS FOR INVALID DATA :
 - **** : DAILY ZERO/SPAN CHECK
 - D : DYNAMIC CALIBRATION
 - T : TELEMETRY/DATALOGGR/ANALYZER FAULT
 - M : MAINTENANCE OR MACHINE SHUTDOWN
 - P : POWER FAILURE
 2. BRACKETED READINGS EXCEED 1-HR OBJECTIVE 800 OR 24-HR OBJECTIVE 350

THE HONGKONG ELECTRIC COMPANY, LTD.
AIR QUALITY DATA MONTHLY TIME SERIES REPORT

STATION : CHUNG HOM KOK ZONE SUBSTATION MONTH: MARCH YEAR : 2010
 POLLUTANT : NITROGEN DIOXIDE UNIT : MICROGRAMS/CUBIC METER

DAY	1	2	3	4	5	6	7	8	9	10	11	12	13	14	15	16	17	18	19	20	21	22	23	24	MEAN
1	11	9	6	8	9	9	11	14	12	16	13	13	16	15	15	18	23	20	23	15	16	10	****	18	14
2	14	7	6	5	7	7	9	14	12	9	7	14	12	14	12	19	30	25	28	21	18	15	****	19	14
3	17	11	13	16	8	7	9	18	21	24	22	19	21	12	18	11	22	25	21	20	20	18	****	18	17
4	14	17	16	17	15	17	9	15	18	21	16	13	16	11	16	19	28	22	23	23	25	25	****	15	18
5	18	16	21	13	14	11	15	25	24	14	14	14	12	12	8	8	11	12	20	20	16	21	****	11	15
6	15	15	16	16	14	17	17	18	23	17	18	17	18	15	11	13	14	18	20	18	19	17	****	12	16
7	13	15	25	31	35	32	31	29	28	29	26	14	13	16	18	19	19	19	18	18	18	18	****	17	22
8	15	15	14	13	12	11	11	11	13	13	11	12	12	12	13	12	14	19	25	41	40	35	****	31	18
9	22	15	11	9	8	7	10	15	16	15	14	16	25	29	21	21	24	18	15	12	12	10	****	9	15
10	9	5	4	4	3	4	6	11	16	22	31	24	11	15	16	19	23	20	16	51	38	26	****	13	17
11	19	12	9	10	14	11	12	18	19	17	18	14	18	20	21	22	26	24	9	8	11	13	****	10	15
12	9	8	10	9	10	10	13	22	23	20	22	22	18	13	19	18	29	27	23	26	24	17	****	13	18
13	14	12	9	9	9	7	10	14	19	15	14	11	11	12	11	14	20	20	19	15	14	13	****	11	13
14	10	12	11	10	12	7	7	8	10	13	12	13	18	14	15	14	15	16	13	10	13	9	****	7	12
15	7	7	9	8	8	8	13	21	20	18	12	16	18	17	13	12	17	25	30	28	25	14	****	29	16
16	41	46	47	44	44	44	40	39	36	33	17	17	18	17	19	22	24	22	21	18	15	13	****	12	28
17	12	11	9	9	7	8	11	18	15	14	11	12	15	21	17	30	29	29	34	45	43	64	****	78	24
18	92	95	106	96	97	103	88	80	76	62	93	103	71	30	28	M	25	46	27	14	13	22	****	19	63
19	15	8	8	5	5	6	11	25	40	22	22	19	19	22	17	19	24	23	26	16	39	28	****	17	19
20	13	10	10	8	7	7	22	70	51	58	37	58	24	46	38	40	57	62	66	99	101	99	****	101	47
21	104	103	102	101	102	91	103	99	86	97	109	98	72	74	73	60	22	22	20	21	17	19	****	13	70
22	12	10	9	10	10	14	12	14	19	17	19	20	16	17	18	17	17	18	18	21	15	10	****	14	15
23	18	11	9	10	9	8	12	10	16	19	12	14	13	14	14	12	22	24	23	27	19	11	****	7	15
24	9	8	5	3	5	7	19	25	25	21	17	16	16	14	12	10	15	27	27	24	16	16	****	30	16
25	39	33	29	24	18	17	17	22	25	25	23	25	21	23	27	25	27	28	22	21	15	12	****	11	23
26	11	7	6	6	6	6	8	12	16	15	15	15	11	16	16	17	19	16	13	13	17	15	****	10	12
27	10	9	8	7	7	8	7	10	14	17	21	26	26	21	23	32	30	44	73	85	60	69	****	45	28
28	39	43	32	26	23	20	17	17	21	29	21	24	36	32	28	26	26	25	19	18	16	14	****	9	24
29	9	7	7	5	5	5	7	14	13	13	12	13	12	15	17	16	16	13	11	9	10	8	****	6	11
30	6	6	5	6	5	5	7	10	11	12	12	14	12	10	11	13	13	14	12	11	7	6	****	8	9
31	6	5	4	7	6	5	5	7	9	8	9	14	14	17	15	15	17	21	14	11	8	9	****	10	10

MONTHLY STATISTICS:

GEOM	ARITH	<-----PERCENTILE----->					<-----RANGE----->			STD GEOM	PERCENT	NO. OF TIMES	
MEAN	MEDIAN	50	90	95	98	99	1-HR	24-HR	DEVIATION	VALID DATA	1-HR	24-HR	
17	16	16	37	68	99	102	3	- 109	2	96	0	0	

- NOTES: 1. FLAGS FOR INVALID DATA :
 **** : DAILY ZERO/SPAN CHECK
 D : DYNAMIC CALIBRATION
 T : TELEMETRY/DATALOGGR/ANALYZER FAULT
 M : MAINTENANCE OR MACHINE SHUTDOWN
 P : POWER FAILURE
2. BRACKETED READINGS EXCEED 1-HR OBJECTIVE 300 OR 24-HR OBJECTIVE 150

THE HONGKONG ELECTRIC COMPANY, LTD.
AIR QUALITY DATA MONTHLY TIME SERIES REPORT

STATION : VICTORIA ROAD SUBSTATION
POLLUTANT : SULPHUR DIOXIDE

MONTH: JANUARY

YEAR : 2010
UNIT : MICROGRAMS/CUBIC METER

DAY	1	2	3	4	5	6	7	8	9	10	11	12	13	14	15	16	17	18	19	20	21	22	23	24	MEAN
1	10	9	8	8	6	8	8	10	12	10	11	12	10	11	26	13	6	6	7	8	7	7	****	6	10
2	5	5	7	15	14	11	8	7	15	50	50	39	41	50	37	50	45	30	28	26	13	6	****	9	24
3	5	3	4	4	5	4	6	12	8	8	5	10	14	6	3	3	3	4	5	3	3	3	****	4	5
4	3	3	3	3	3	3	3	4	5	19	27	9	10	5	5	4	4	3	3	3	4	3	****	5	6
5	8	8	5	5	5	4	4	7	7	7	5	5	5	5	4	3	3	3	4	5	5	****	4	5	
6	3	3	3	3	3	3	3	3	4	3	3	6	3	3	5	26	30	16	10	11	16	****	10	7	
7	9	7	5	5	11	9	8	8	11	10	8	8	8	8	9	8	8	6	8	12	13	9	****	9	9
8	12	14	10	12	16	8	11	16	23	28	36	29	21	22	18	12	22	26	15	10	9	10	****	7	17
9	6	6	5	5	5	5	5	5	5	5	5	5	7	7	14	17	19	4	3	3	4	6	****	7	7
10	7	9	7	5	3	3	3	3	3	3	4	3	3	3	4	3	6	3	3	3	3	3	****	2	4
11	3	3	3	8	19	25	26	28	32	17	13	13	11	9	13	19	17	14	13	16	9	5	****	7	14
12	8	8	8	8	8	8	8	11	15	14	14	13	15	16	17	15	16	19	22	18	19	19	****	21	14
13	21	23	22	20	18	20	16	18	24	19	11	9	7	5	7	8	8	17	22	20	23	23	****	12	16
14	12	13	24	19	11	10	10	9	12	13	12	10	10	9	8	8	8	7	6	7	6	7	****	5	10
15	5	5	5	5	5	5	5	5	5	7	6	6	5	5	5	5	3	5	9	7	5	4	****	3	5
16	4	11	16	16	16	13	20	18	15	14	16	14	31	15	11	11	12	10	6	5	3	3	****	5	12
17	6	4	4	5	5	5	5	6	9	11	14	10	9	38	19	11	9	7	5	5	5	5	****	4	9
18	3	3	5	5	4	4	3	4	5	3	21	10	6	6	5	5	5	6	7	6	5	5	****	3	6
19	3	3	3	3	2	1	2	5	5	26	29	12	25	9	5	3	3	0	3	3	3	4	****	3	7
20	3	3	3	3	6	10	5	3	3	3	10	3	3	3	3	3	3	3	2	1	0	0	****	3	3
21	1	0	0	1	0	0	1	2	2	2	3	3	3	3	0	2	2	1	1	4	1	1	****	5	2
22	2	1	2	0	1	1	0	0	1	2	3	2	3	3	3	3	3	3	3	3	3	3	****	3	2
23	3	3	3	3	3	3	3	3	4	3	3	4	3	3	3	3	3	3	4	5	5	6	****	5	3
24	6	5	7	8	9	6	5	5	7	8	8	8	8	7	8	10	16	20	32	31	28	15	****	24	12
25	22	17	24	35	22	28	22	25	36	40	49	30	25	30	23	17	12	14	11	6	5	5	****	5	22
26	4	7	10	13	14	8	6	5	7	6	6	5	5	5	5	5	5	4	4	5	5	5	****	5	6
27	5	5	5	5	4	4	3	4	5	11	19	22	22	29	36	23	14	19	10	8	10	15	****	30	13
28	36	28	30	53	63	60	49	48	58	64	91	88	54	49	19	27	39	65	78	56	56	45	****	23	51
29	13	8	9	18	34	26	13	9	8	8	8	9	8	8	7	6	3	4	3	5	5	5	****	5	10
30	3	3	3	3	3	5	7	10	14	18	42	27	13	17	10	11	15	5	3	3	6	10	****	15	11
31	14	34	41	32	30	35	38	35	55	75	46	25	13	9	9	7	16	22	40	25	17	16	****	15	28

MONTHLY STATISTICS:

GEOM		ARITH	<-----PERCENTILE----->					<-----RANGE----->			STD GEOM	PERCENT	NO. OF TIMES ABOVE OBJECTIVE	
MEAN	MEDIAN	MEAN	50	90	95	98	99	1-HR	24-HR	DEVIATION	VALID DATA	1-HR	24-HR	
7	7	11	7	26	36	50	59	0	- 91	3	96	0	0	

- NOTES:
1. FLAGS FOR INVALID DATA :
 - **** : DAILY ZERO/SPAN CHECK
 - D : DYNAMIC CALIBRATION
 - T : TELEMETRY/DATALOGGR/ANALYZER FAULT
 - M : MAINTENANCE OR MACHINE SHUTDOWN
 - P : POWER FAILURE
 2. BRACKETED READINGS EXCEED 1-HR OBJECTIVE 800 OR 24-HR OBJECTIVE 350

THE HONGKONG ELECTRIC COMPANY, LTD.
AIR QUALITY DATA MONTHLY TIME SERIES REPORT

STATION : VICTORIA ROAD SUBSTATION
POLLUTANT : NITROGEN DIOXIDE

MONTH: JANUARY

YEAR : 2010
UNIT : MICROGRAMS/CUBIC METER

DAY	1	2	3	4	5	6	7	8	9	10	11	12	13	14	15	16	17	18	19	20	21	22	23	24	MEAN
1	15	14	13	14	13	15	19	27	32	30	34	33	27	35	57	43	31	37	49	51	31	44	****	35	30
2	31	25	24	35	39	45	54	58	65	67	69	63	64	57	64	100	102	91	83	78	57	34	****	59	59
3	53	43	23	24	38	27	31	53	40	23	25	35	46	24	21	22	36	49	50	58	29	46	****	47	37
4	46	27	17	16	14	16	40	59	58	71	72	32	36	23	27	33	44	34	54	55	93	77	****	35	43
5	58	51	16	9	7	8	14	21	25	23	21	20	17	22	22	22	23	22	22	21	21	18	****	14	22
6	13	11	10	14	13	11	18	36	39	34	42	44	46	51	55	63	67	64	68	61	56	47	****	41	39
7	41	34	26	23	28	27	28	35	37	36	34	37	37	40	46	50	57	58	59	54	52	51	****	44	41
8	43	38	34	33	34	32	37	33	39	44	43	42	46	51	65	75	76	76	75	76	70	66	****	48	51
9	46	36	26	24	21	20	22	28	32	34	31	34	43	26	46	65	71	56	52	46	33	23	****	25	36
10	19	16	10	8	7	9	11	14	16	14	13	12	14	13	19	26	41	45	23	22	22	17	****	41	19
11	35	8	6	25	49	48	43	45	47	49	48	45	43	49	55	54	53	49	56	56	55	48	****	47	44
12	45	30	25	22	19	23	30	37	36	40	41	49	49	45	53	58	70	83	103	94	83	75	****	42	50
13	46	35	31	21	29	42	43	66	79	59	37	28	16	22	23	44	29	59	74	86	67	118	****	89	50
14	88	99	86	40	25	20	24	35	37	29	22	22	25	23	29	36	59	67	78	65	31	29	****	19	43
15	15	11	10	9	10	15	26	51	44	49	39	36	24	20	24	30	39	27	37	30	25	52	****	45	29
16	28	12	30	18	15	15	28	51	60	74	66	66	72	33	31	47	38	47	39	23	15	14	****	20	37
17	22	15	14	8	15	20	22	26	27	24	26	22	24	65	40	24	30	27	27	27	22	22	****	19	25
18	13	11	8	8	7	9	20	38	49	30	54	29	24	31	26	36	44	48	60	38	32	21	****	17	28
19	13	7	7	8	8	10	21	52	49	72	68	47	74	37	26	25	34	33	25	21	17	33	****	13	30
20	9	7	5	4	15	33	31	25	32	34	57	16	17	15	15	19	21	21	16	16	16	14	****	13	20
21	10	5	4	3	3	5	14	25	28	17	18	15	17	20	17	23	25	26	34	66	38	53	****	58	23
22	21	9	10	10	9	11	14	19	22	23	23	16	17	27	24	28	34	54	48	44	38	35	****	32	25
23	31	29	30	31	32	31	32	32	32	33	27	33	36	41	38	45	57	58	60	63	60	58	****	43	41
24	44	35	35	35	33	30	30	32	31	29	28	33	37	39	45	51	64	78	80	84	86	72	****	92	49
25	91	83	81	74	65	62	65	68	75	84	85	85	88	95	90	83	78	81	70	53	62	61	****	27	74
26	37	53	47	46	41	32	34	38	42	39	32	35	30	31	30	31	31	39	27	22	27	26	****	20	34
27	18	13	13	11	12	11	22	29	38	61	65	63	66	62	74	73	68	89	71	77	82	82	****	83	52
28	82	76	74	74	74	69	69	71	62	70	72	62	65	59	44	84	91	144	189	177	164	134	****	81	91
29	53	38	38	69	97	70	17	20	23	23	21	20	17	20	23	31	27	26	26	25	22	20	****	17	32
30	13	14	21	13	17	21	42	53	68	66	76	51	37	50	38	49	68	49	27	30	76	92	****	96	46
31	82	91	93	88	77	80	81	82	78	74	51	35	20	14	17	12	30	41	91	88	72	57	****	44	61

MONTHLY STATISTICS:

GEOM	ARITH	<-----PERCENTILE----->							<-----RANGE----->			STD GEOM	PERCENT	NO. OF TIMES ABOVE OBJECTIVE	
MEAN	MEDIAN	MEAN	50	90	95	98	99	1-HR	24-HR	DEVIATION	VALID DATA	1-HR	24-HR		
34	35	41	35	75	84	93	101	3	- 189	2	96	0	0		

- NOTES:
1. FLAGS FOR INVALID DATA :
 - **** : DAILY ZERO/SPAN CHECK
 - D : DYNAMIC CALIBRATION
 - T : TELEMETRY/DATALOGGR/ANALYZER FAULT
 - M : MAINTENANCE OR MACHINE SHUTDOWN
 - P : POWER FAILURE
 2. BRACKETED READINGS EXCEED 1-HR OBJECTIVE 300 OR 24-HR OBJECTIVE 150

THE HONGKONG ELECTRIC COMPANY, LTD.
AIR QUALITY DATA MONTHLY TIME SERIES REPORT

STATION : VICTORIA ROAD SUBSTATION
POLLUTANT : SULPHUR DIOXIDE

MONTH: FEBRUARY

YEAR : 2010
UNIT : MICROGRAMS/CUBIC METER

DAY	1	2	3	4	5	6	7	8	9	10	11	12	13	14	15	16	17	18	19	20	21	22	23	24	MEAN	
1	23	12	6	5	4	3	6	10	60	73	72	41	15	16	13	30	17	10	11	31	16	8	****	10	21	
2	8	5	8	12	11	8	6	4	4	5	5	3	4	3	3	3	3	2	2	2	3	2	****	3	5	
3	1	4	9	14	21	18	12	8	15	18	15	16	5	3	3	3	3	3	2	2	2	1	****	2	8	
4	1	0	0	0	0	1	0	0	1	3	3	2	2	2	1	3	0	1	1	1	1	0	****	1	1	
5	2	2	3	3	3	3	3	1	2	1	2	1	1	0	2	0	0	0	0	0	1	0	****	2	1	
6	0	0	0	0	0	0	0	0	1	0	0	1	1	0	1	1	0	1	1	2	1	1	****	2	1	
7	0	0	2	2	2	2	3	2	1	1	1	1	1	0	0	0	0	0	2	1	2	4	****	3	1	
8	8	5	11	18	20	24	23	36	39	30	17	8	6	5	3	3	3	3	3	3	3	3	****	3	12	
9	3	3	3	3	3	3	3	3	3	3	5	6	5	5	4	7	13	12	9	8	12	10	****	10	6	
10	11	9	8	7	5	6	7	7	12	17	15	13	10	7	8	8	10	9	10	8	9	9	****	9	9	
11	5	5	4	5	6	7	7	8	13	16	16	13	10	8	11	12	12	14	12	9	9	8	****	9	10	
12	6	17	28	38	25	15	16	16	19	18	22	25	13	12	16	17	17	14	9	9	11	17	****	7	17	
13	3	3	3	3	3	4	3	3	3	3	3	3	3	3	3	3	3	2	2	2	3	3	****	3	3	
14	1	2	2	1	1	2	2	1	3	10	15	11	7	5	6	8	8	7	7	9	15	8	****	20	7	
15	18	5	3	5	5	9	15	11	11	11	8	10	10	11	11	9	14	14	14	16	14	8	****	5	10	
16	3	5	6	2	1	2	1	3	6	10	15	17	15	16	9	7	3	3	3	5	3	3	****	3	6	
17	3	3	3	2	1	1	2	4	6	5	5	7	9	8	8	8	9	7	6	6	5	5	****	5	5	
18	3	3	3	3	3	3	3	3	5	5	5	5	5	5	5	5	5	6	5	5	3	3	****	4	4	
19	2	2	3	3	3	3	3	4	7	11	12	15	12	12	13	15	18	14	9	8	9	9	****	9	8	
20	8	6	5	5	5	4	5	4	6	7	7	24	48	33	15	9	10	30	34	20	14	16	****	6	14	
21	3	4	8	6	4	3	4	5	8	13	38	41	37	20	19	8	3	2	3	3	2	3	****	4	10	
22	3	3	3	3	3	3	4	8	13	21	18	16	17	22	30	34	30	23	20	18	16	23	****	30	16	
23	31	30	14	41	46	65	56	41	36	36	47	31	14	11	7	6	4	3	3	1	0	2	****	1	23	
24	0	0	0	0	0	1	0	1	4	7	6	10	9	5	7	7	8	12	5	4	5	4	3	5	4	
25	3	3	6	6	4	3	4	6	10	16	12	12	<----- D ----->					8	7	5	5	5	8	****	10	7
26	6	3	3	3	3	3	4	7	6	6	6	6	10	9	18	13	6	5	5	7	9	10	****	9	7	
27	8	4	4	5	10	6	7	9	9	13	12	13	8	11	13	15	11	9	8	9	7	5	****	6	9	
28	3	3	4	6	7	3	3	5	6	6	7	5	5	4	4	7	5	3	2	2	3	2	****	4	4	

MONTHLY STATISTICS:

GEOM		ARITH	<-----PERCENTILE----->					<-----RANGE----->			STD GEOM	PERCENT	NO. OF TIMES ABOVE OBJECTIVE	
MEAN	MEDIAN	MEAN	50	90	95	98	99	1-HR		24-HR	DEVIATION	VALID DATA	1-HR	24-HR
5	5	8	5	17	27	39	47	0	-	73	3	95	0	0

- NOTES:
1. FLAGS FOR INVALID DATA :
 - **** : DAILY ZERO/SPAN CHECK
 - D : DYNAMIC CALIBRATION
 - T : TELEMETRY/DATALOGGR/ANALYZER FAULT
 - M : MAINTENANCE OR MACHINE SHUTDOWN
 - P : POWER FAILURE
 2. BRACKETED READINGS EXCEED 1-HR OBJECTIVE 800 OR 24-HR OBJECTIVE 350

THE HONGKONG ELECTRIC COMPANY, LTD.
AIR QUALITY DATA MONTHLY TIME SERIES REPORT

STATION : VICTORIA ROAD SUBSTATION
POLLUTANT : NITROGEN DIOXIDE

MONTH: FEBRUARY

YEAR : 2010
UNIT : MICROGRAMS/CUBIC METER

DAY	1	2	3	4	5	6	7	8	9	10	11	12	13	14	15	16	17	18	19	20	21	22	23	24	MEAN
1	59	33	11	9	15	28	57	60	62	50	48	34	17	22	20	42	33	21	48	74	62	34	****	64	39
2	43	19	19	21	16	15	21	22	29	25	24	19	17	17	18	22	23	25	26	21	17	14	****	15	21
3	16	51	64	72	78	67	52	72	74	56	39	32	18	21	22	20	22	24	19	18	15	13	****	11	38
4	10	7	6	5	6	8	12	20	22	23	20	24	19	22	20	23	22	20	20	19	18	15	****	25	17
5	36	18	21	6	6	9	16	19	23	19	18	19	16	17	19	20	22	18	15	13	13	11	****	12	17
6	10	7	8	6	6	7	12	13	18	20	19	18	16	17	20	19	18	20	17	16	15	13	****	14	14
7	10	8	9	12	21	16	21	18	14	16	15	15	14	15	24	31	21	15	38	43	40	62	****	41	22
8	71	33	53	62	51	62	64	72	74	64	43	22	18	20	22	26	29	29	31	32	33	27	****	20	42
9	21	13	10	6	7	11	26	38	41	35	25	27	23	24	29	35	46	49	42	37	44	42	****	41	29
10	38	23	17	13	12	17	39	43	44	41	39	20	15	16	19	28	41	43	40	36	36	28	****	21	29
11	12	8	9	8	12	23	24	28	35	30	19	14	14	14	16	19	27	42	44	40	36	30	****	34	23
12	27	39	42	40	33	31	34	37	42	41	43	45	43	38	43	46	51	53	51	50	47	44	****	41	42
13	40	38	33	31	26	21	15	19	20	20	19	22	18	13	17	18	15	13	14	17	11	11	****	9	20
14	8	8	6	6	6	9	13	18	33	52	48	41	42	46	39	39	42	40	39	39	37	34	****	38	30
15	33	25	22	24	25	28	30	29	29	28	27	27	28	31	33	36	38	40	43	42	41	42	****	39	32
16	33	32	33	13	9	13	21	35	41	40	39	36	34	37	38	39	36	32	33	40	41	41	****	35	33
17	32	28	19	18	13	11	19	36	42	43	36	36	36	37	40	42	43	45	55	50	50	39	****	46	36
18	39	32	24	16	20	20	27	43	50	53	46	45	42	46	45	50	57	59	57	57	52	45	****	55	43
19	45	34	39	28	27	29	43	55	62	59	61	60	51	55	54	53	66	70	74	72	72	71	****	71	54
20	61	49	33	34	34	29	45	46	52	47	46	48	58	51	25	20	29	80	85	84	88	87	****	65	52
21	67	48	53	45	31	24	56	52	64	54	68	72	63	56	63	38	22	17	14	17	15	15	****	11	42
22	8	8	8	5	5	10	54	78	78	86	67	58	70	74	83	88	93	95	99	97	100	98	****	92	63
23	86	76	62	74	76	81	80	84	82	79	75	43	20	19	13	23	25	41	48	42	34	26	****	18	52
24	15	11	10	9	9	14	30	40	55	51	40	42	34	37	39	41	42	60	35	31	40	34	30	27	32
25	23	14	21	23	14	15	35	51	52	50	36	30	<----- D ----->				39	43	38	34	34	37	****	34	33
26	26	14	11	12	15	19	35	45	30	25	27	20	21	17	24	30	39	44	38	43	48	46	****	36	29
27	25	19	17	17	29	20	33	39	39	32	23	14	12	13	18	28	33	28	40	48	42	35	****	34	28
28	31	24	19	27	29	22	28	29	27	23	21	26	20	18	15	18	19	22	26	23	20	22	****	18	23

MONTHLY STATISTICS:

GEOM		ARITH	<-----PERCENTILE----->					<-----RANGE----->			STD GEOM	PERCENT	NO. OF TIMES ABOVE OBJECTIVE	
MEAN	MEDIAN	MEAN	50	90	95	98	99	1-HR	24-HR	DEVIATION	VALID DATA	1-HR	24-HR	
28	30	33	30	61	73	85	90	5	100	2	95	0	0	

- NOTES:
1. FLAGS FOR INVALID DATA :
 - **** : DAILY ZERO/SPAN CHECK
 - D : DYNAMIC CALIBRATION
 - T : TELEMETRY/DATALOGGR/ANALYZER FAULT
 - M : MAINTENANCE OR MACHINE SHUTDOWN
 - P : POWER FAILURE
 2. BRACKETED READINGS EXCEED 1-HR OBJECTIVE 300 OR 24-HR OBJECTIVE 150

THE HONGKONG ELECTRIC COMPANY, LTD.
AIR QUALITY DATA MONTHLY TIME SERIES REPORT

STATION : VICTORIA ROAD SUBSTATION
POLLUTANT : SULPHUR DIOXIDE

MONTH: MARCH

YEAR : 2010
UNIT : MICROGRAMS/CUBIC METER

DAY	1	2	3	4	5	6	7	8	9	10	11	12	13	14	15	16	17	18	19	20	21	22	23	24	MEAN
1	2	2	3	2	2	2	3	3	4	5	5	3	3	4	4	2	2	3	3	3	5	3	****	6	3
2	5	2	2	2	6	7	4	6	6	8	9	12	10	9	7	9	13	9	9	7	3	6	****	11	7
3	6	5	8	10	7	7	8	10	11	12	11	14	12	18	16	14	14	15	14	14	19	18	****	15	12
4	14	18	13	17	17	18	19	10	16	18	23	17	16	13	15	14	14	15	13	19	15	13	****	15	16
5	13	10	13	9	9	8	9	13	16	23	24	20	14	12	11	9	9	8	17	8	3	6	****	6	12
6	5	7	6	7	8	11	11	12	17	17	15	19	16	18	12	11	14	11	12	12	15	11	****	12	12
7	10	9	16	20	48	57	26	23	18	15	14	14	11	9	13	14	3	6	5	5	5	3	****	5	15
8	3	3	3	3	3	3	2	3	2	3	3	3	3	3	3	3	3	5	5	9	12	8	****	9	4
9	5	5	2	2	2	0	2	2	2	2	1	2	4	5	13	0	3	3	3	3	1	3	****	3	3
10	5	5	8	11	13	13	15	14	14	14	12	14	15	14	15	15	21	17	15	11	10	14	****	6	13
11	8	9	8	14	10	9	5	4	6	11	6	7	10	11	15	2	7	7	7	6	5	5	****	7	8
12	6	7	6	6	5	5	9	18	25	31	40	35	49	27	15	8	18	16	16	15	17	19	****	25	18
13	40	52	35	24	16	23	37	23	15	24	50	59	28	19	18	27	9	4	1	0	0	0	****	7	22
14	0	0	0	0	2	10	18	28	28	8	18	13	6	5	3	4	2	1	2	2	2	2	****	4	7
15	1	2	3	3	3	3	3	3	4	4	7	8	28	26	27	31	28	15	11	10	9	15	****	22	11
16	17	21	36	57	58	60	52	35	24	21	13	9	8	8	7	5	5	7	5	5	5	5	****	5	20
17	5	5	5	5	16	8	2	4	6	7	7	17	23	22	19	31	23	16	17	34	26	29	****	37	16
18	38	46	62	58	55	53	67	79	81	87	90	155	82	60	59	52	34	15	10	8	8	8	****	7	53
19	2	0	0	0	0	0	0	0	3	16	2	0	0	0	0	2	1	0	0	0	0	0	****	0	1
20	0	0	0	0	0	0	0	0	19	71	58	5	1	0	5	16	8	14	22	25	15	18	****	25	13
21	23	22	20	24	24	46	41	40	97	125	139	93	132	65	56	32	10	5	3	3	2	2	****	1	44
22	0	0	0	1	1	1	1	1	3	29	16	27	38	39	27	9	5	4	2	2	3	3	****	4	9
23	2	17	0	1	10	6	5	6	7	9	9	6	6	11	0	3	3	3	3	3	3	2	****	5	5
24	3	4	5	11	10	7	6	5	6	6	5	7	5	5	5	5	4	3	3	1	1	1	****	10	5
25	19	14	6	4	2	13	5	0	4	6	6	6	6	4	4	5	5	5	5	3	3	5	****	6	6
26	6	5	5	7	7	8	7	8	11	11	8	9	6	6	7	6	7	8	6	7	5	5	****	6	7
27	5	5	5	5	5	5	7	8	8	8	8	10	13	15	13	25	43	39	28	21	20	24	****	27	15
28	26	31	25	22	19	15	14	14	18	25	38	28	28	14	13	9	8	6	4	5	3	3	****	2	16
29	2	0	2	3	3	6	19	1	2	5	7	6	7	7	6	7	5	5	4	3	5	****	4	5	
30	2	2	2	2	2	2	2	1	1	1	1	1	1	1	1	1	1	0	0	0	0	0	****	0	1
31	0	0	0	0	11	5	0	0	0	1	3	1	1	3	1	0	0	0	0	0	0	0	****	1	1

MONTHLY STATISTICS:

GEOM	ARITH	<-----PERCENTILE----->					<-----RANGE----->				STD GEOM	PERCENT	NO. OF TIMES			
MEAN	MEDIAN	50	90	95	98	99	1-HR		24-HR		DEVIATION	VALID DATA	1-HR	24-HR		
7	7	7	27	42	61	85	0	-	155	1	-	53	3	96	0	0

- NOTES:
1. FLAGS FOR INVALID DATA :
 - **** : DAILY ZERO/SPAN CHECK
 - D : DYNAMIC CALIBRATION
 - T : TELEMETRY/DATALOGGR/ANALYZER FAULT
 - M : MAINTENANCE OR MACHINE SHUTDOWN
 - P : POWER FAILURE
 2. BRACKETED READINGS EXCEED 1-HR OBJECTIVE 800 OR 24-HR OBJECTIVE 350

THE HONGKONG ELECTRIC COMPANY, LTD.
AIR QUALITY DATA MONTHLY TIME SERIES REPORT

STATION : VICTORIA ROAD SUBSTATION
POLLUTANT : NITROGEN DIOXIDE

MONTH: MARCH

YEAR : 2010
UNIT : MICROGRAMS/CUBIC METER

DAY	1	2	3	4	5	6	7	8	9	10	11	12	13	14	15	16	17	18	19	20	21	22	23	24	MEAN
1	14	10	7	8	6	12	31	26	42	38	30	24	22	22	26	28	31	35	26	24	30	24	****	31	24
2	30	15	11	12	25	27	36	44	37	32	39	39	25	28	25	35	44	51	55	47	35	34	****	38	33
3	29	15	19	22	11	13	27	51	45	36	30	30	26	30	25	27	33	34	32	33	29	24	****	27	28
4	18	12	19	17	20	27	29	38	34	34	34	27	32	23	28	40	46	49	48	50	39	37	****	40	32
5	34	19	25	19	18	19	38	48	37	34	38	31	19	18	15	18	18	21	33	32	32	24	****	21	27
6	20	17	18	18	18	30	35	42	40	34	24	24	25	23	21	17	33	35	44	45	45	40	****	38	30
7	30	24	31	35	35	33	31	33	31	30	31	34	33	35	35	32	32	35	33	33	27	28	****	26	32
8	24	21	16	14	11	12	18	24	24	26	21	18	19	32	46	55	55	52	42	43	43	40	****	31	30
9	25	20	14	12	10	10	18	30	44	57	51	39	38	32	28	31	34	36	36	42	35	37	****	21	30
10	20	11	8	9	11	11	24	43	59	60	54	48	49	49	42	44	57	78	74	67	75	111	****	51	46
11	50	23	35	55	38	45	22	43	48	42	35	34	23	20	20	18	26	53	104	104	98	104	****	90	49
12	86	64	42	19	20	36	66	75	67	82	91	85	105	105	86	68	97	97	97	93	90	96	****	94	77
13	93	93	86	77	64	73	77	63	58	70	76	74	69	68	63	65	44	40	26	22	19	17	****	15	59
14	10	9	8	6	18	59	67	67	50	17	43	35	20	19	19	19	23	28	28	28	22	24	****	21	28
15	16	14	9	12	10	21	43	41	42	31	28	18	33	34	42	46	44	52	70	66	62	65	****	50	37
16	43	52	49	47	46	45	42	40	49	55	46	40	38	40	42	44	44	55	54	50	42	28	****	16	44
17	14	12	10	11	11	14	27	39	55	58	61	64	61	54	57	88	65	52	58	111	106	100	****	91	53
18	97	102	105	105	98	85	86	86	85	91	100	118	104	95	92	79	60	44	78	91	112	122	****	99	93
19	76	69	42	33	34	38	70	81	82	83	41	27	16	23	35	30	32	33	99	133	111	105	****	41	58
20	67	39	70	60	27	48	86	85	110	112	104	50	31	25	46	51	60	95	109	104	104	100	****	82	72
21	85	82	88	89	82	75	76	75	98	109	131	134	140	80	79	57	21	19	19	19	18	20	****	17	70
22	11	9	7	7	7	11	16	23	39	72	44	59	75	72	51	31	29	30	22	20	31	24	****	18	31
23	16	35	22	39	41	7	37	57	47	44	39	23	21	18	16	31	27	33	28	34	30	26	****	53	31
24	41	37	41	46	38	34	47	45	38	27	23	28	30	20	18	22	28	36	36	34	43	32	****	37	34
25	37	33	27	23	17	16	20	27	38	46	43	37	46	45	50	51	53	55	58	53	42	31	****	29	38
26	26	19	17	15	13	13	24	63	68	57	35	29	16	26	26	26	29	31	31	36	28	22	****	15	29
27	15	12	13	13	13	15	23	39	63	56	74	74	63	64	46	95	129	126	119	108	125	126	****	124	67
28	115	120	95	89	64	51	59	62	55	51	82	64	47	36	29	20	21	25	23	22	19	16	****	20	52
29	14	9	8	7	7	8	17	23	33	36	24	29	31	33	25	32	31	25	19	14	14	12	****	10	20
30	7	5	5	5	5	6	12	19	21	22	18	19	17	16	18	20	21	21	19	16	12	11	****	13	14
31	7	4	4	4	4	6	14	21	25	37	39	20	14	21	20	22	26	23	19	19	18	14	****	9	17

MONTHLY STATISTICS:

GEOM	ARITH	<-----PERCENTILE----->					<-----RANGE----->			STD GEOM	PERCENT	NO. OF TIMES		
MEAN	MEDIAN	50	90	95	98	99	1-HR	24-HR	DEVIATION	VALID DATA	1-HR	24-HR		
33	34	34	86	103	112	125	4	- 140	14	- 93	2	96	0	0

- NOTES:
1. FLAGS FOR INVALID DATA :
 - **** : DAILY ZERO/SPAN CHECK
 - D : DYNAMIC CALIBRATION
 - T : TELEMETRY/DATALOGGR/ANALYZER FAULT
 - M : MAINTENANCE OR MACHINE SHUTDOWN
 - P : POWER FAILURE
 2. BRACKETED READINGS EXCEED 1-HR OBJECTIVE 300 OR 24-HR OBJECTIVE 150

THE HONGKONG ELECTRIC COMPANY, LTD.
AIR QUALITY DATA MONTHLY TIME SERIES REPORT

STATION : QUEEN MARY HOSPITAL
POLLUTANT : SULPHUR DIOXIDE

MONTH: JANUARY

YEAR : 2010
UNIT : MICROGRAMS/CUBIC METER

DAY	1	2	3	4	5	6	7	8	9	10	11	12	13	14	15	16	17	18	19	20	21	22	23	24	MEAN	
1	10	9	8	8	7	9	9	10	12	11	12	11	10	9	24	15	7	7	7	6	6	6	****	4	9	
2	6	5	5	12	10	6	4	5	8	53	40	34	23	41	27	38	38	24	26	13	5	3	****	3	19	
3	3	4	3	3	4	6	5	8	8	8	2	5	12	4	2	2	2	3	3	2	2	2	****	6	4	
4	3	7	15	18	6	6	8	7	10	12	21	23	19	10	6	3	2	2	2	1	2	3	****	4	8	
5	5	9	10	7	4	4	4	5	7	8	5	7	5	5	6	4	4	4	5	5	5	5	****	5	6	
6	5	4	4	3	3	3	4	4	5	3	2	2	2	2	2	4	7	18	9	7	8	11	****	4	5	
7	5	4	5	5	12	7	8	8	10	8	7	8	7	7	7	7	6	6	6	5	5	5	****	4	7	
8	6	13	18	15	15	4	5	13	21	17	32	28	18	16	7	6	13	20	6	8	7	7	****	4	13	
9	4	4	4	4	4	4	4	4	6	5	6	6	5	4	19	21	26	12	5	7	6	6	****	9	8	
10	10	11	10	6	4	4	5	4	4	4	5	5	5	5	3	6	3	2	2	2	2	2	****	2	5	
11	2	2	4	6	21	28	27	26	30	14	14	10	10	5	10	18	14	13	11	8	3	3	****	4	12	
12	6	6	7	7	8	8	9	12	12	12	13	13	15	16	17	15	15	16	18	19	20	19	****	21	13	
13	24	24	24	20	18	22	18	16	16	15	11	10	8	7	8	8	10	28	26	21	23	20	****	14	17	
14	15	15	25	18	13	10	10	10	12	13	12	10	10	9	9	9	8	6	5	11	8	9	****	5	11	
15	6	6	5	6	7	6	4	5	5	16	24	17	6	6	7	5	5	5	8	9	8	7	****	5	8	
16	5	10	19	18	15	13	22	19	15	13	15	15	33	31	12	12	11	11	6	4	3	2	****	7	14	
17	6	3	4	5	6	6	7	8	9	12	13	9	9	26	18	14	10	8	7	6	5	5	****	5	9	
18	3	4	6	7	5	5	4	5	6	5	6	7	5	7	5	12	6	5	7	7	6	4	****	2	6	
19	2	2	1	2	1	1	1	1	1	7	19	19	11	8	5	2	4	2	1	1	1	2	****	2	4	
20	2	1	1	1	1	1	1	1	1	1	2	1	1	1	1	1	1	1	1	1	1	1	****	1	1	
21	1	1	1	1	1	1	1	1	1	1	2	1	1	1	1	1	1	1	1	1	1	1	****	1	1	
22	1	1	1	1	1	2	2	2	2	3	3	3	4	4	5	4	5	4	4	4	4	4	****	4	3	
23	3	4	4	5	5	5	5	5	5	5	5	4	4	4	3	4	4	4	4	10	8	6	7	****	9	5
24	6	12	9	8	10	7	6	7	8	8	9	8	8	9	7	6	13	15	14	26	23	11	****	21	11	
25	15	11	15	32	15	21	14	16	15	18	26	16	21	32	11	10	7	9	7	4	4	4	****	5	14	
26	5	9	13	17	13	7	5	6	9	6	6	5	5	5	5	5	5	4	4	5	7	7	****	7	7	
27	7	8	8	7	7	6	5	6	6	13	16	25	24	21	32	19	14	7	6	3	5	11	****	20	12	
28	28	26	21	24	54	50	39	37	52	37	65	85	41	42	38	40	38	44	36	34	31	11	****	12	38	
29	4	6	10	7	5	5	3	2	2	3	2	3	3	3	2	2	2	2	2	3	3	3	****	4	4	
30	2	3	4	7	6	7	12	16	24	38	36	17	25	18	21	15	21	9	2	2	2	2	****	5	13	
31	2	3	9	4	29	38	29	25	29	47	61	25	4	3	4	3	4	13	17	7	4	4	****	7	16	

MONTHLY STATISTICS:

GEOM	ARITH	<-----PERCENTILE----->							<-----RANGE----->			STD GEOM	PERCENT	NO. OF TIMES ABOVE OBJECTIVE	
MEAN	MEDIAN	MEAN	50	90	95	98	99	1-HR	24-HR	DEVIATION	VALID DATA	1-HR	24-HR		
7	6	10	6	22	29	39	46	1	- 85	2	96	0	0		

- NOTES:
1. FLAGS FOR INVALID DATA :
 - **** : DAILY ZERO/SPAN CHECK
 - D : DYNAMIC CALIBRATION
 - T : TELEMETRY/DATALOGGR/ANALYZER FAULT
 - M : MAINTENANCE OR MACHINE SHUTDOWN
 - P : POWER FAILURE
 2. BRACKETED READINGS EXCEED 1-HR OBJECTIVE 800 OR 24-HR OBJECTIVE 350

THE HONGKONG ELECTRIC COMPANY, LTD.
AIR QUALITY DATA MONTHLY TIME SERIES REPORT

STATION : QUEEN MARY HOSPITAL
POLLUTANT : NITROGEN DIOXIDE

MONTH: JANUARY

YEAR : 2010
UNIT : MICROGRAMS/CUBIC METER

DAY	1	2	3	4	5	6	7	8	9	10	11	12	13	14	15	16	17	18	19	20	21	22	23	24	MEAN
1	16	18	17	16	16	16	18	24	26	28	25	26	27	22	43	39	35	46	48	38	42	29	****	24	28
2	27	18	21	30	27	23	13	50	54	61	61	59	55	57	63	90	95	84	79	51	23	17	****	17	47
3	19	36	18	20	26	23	18	32	33	32	22	33	43	24	14	31	37	32	32	33	23	25	****	32	28
4	22	24	38	39	14	12	21	29	50	57	68	56	67	47	48	24	11	15	24	34	59	36	****	34	36
5	56	44	34	18	8	7	10	20	20	19	17	22	23	24	26	24	25	22	20	20	20	20	****	19	23
6	19	16	13	14	12	11	14	25	33	34	37	23	33	48	57	58	70	65	62	58	56	46	****	40	37
7	36	37	31	26	29	26	26	31	33	30	28	31	30	35	39	40	46	55	59	53	49	46	****	41	37
8	41	39	35	32	31	21	28	32	38	42	45	43	44	51	61	68	72	69	71	71	64	58	****	52	48
9	46	33	23	21	17	18	18	24	36	38	40	42	38	31	47	58	65	59	49	50	36	21	****	20	36
10	24	20	12	6	4	6	6	7	8	9	12	10	23	27	19	23	20	32	29	36	14	15	****	18	17
11	17	8	7	12	44	48	40	46	48	49	45	45	43	20	53	52	52	49	52	49	46	42	****	38	39
12	43	30	25	21	18	21	25	33	28	32	38	41	41	46	52	49	62	81	96	81	74	77	****	41	46
13	43	34	30	20	22	34	42	45	54	49	29	24	15	15	23	30	49	74	84	64	70	106	****	83	45
14	77	67	67	28	19	20	21	33	41	41	30	23	18	30	25	24	32	44	24	64	35	37	****	27	36
15	26	12	10	9	8	9	8	13	28	48	58	51	20	21	30	46	43	35	50	39	48	57	****	31	31
16	21	9	11	11	8	10	14	18	30	52	52	53	74	56	40	52	55	35	36	29	18	17	****	14	31
17	12	8	7	9	8	14	17	20	23	22	24	19	20	56	41	31	33	25	34	40	33	29	****	22	24
18	14	9	7	6	6	6	12	18	36	40	38	30	32	29	26	45	48	53	65	53	31	21	****	21	28
19	16	10	9	8	8	11	12	10	13	29	58	54	43	46	41	54	66	63	44	17	17	10	****	13	28
20	9	4	4	3	3	4	7	8	13	20	20	9	12	9	11	11	8	6	6	12	21	26	****	15	10
21	5	3	3	3	4	4	7	20	13	8	7	5	5	5	7	10	4	6	11	45	39	39	****	32	12
22	13	7	11	12	10	12	11	14	19	20	20	14	18	18	29	32	30	41	37	28	28	26	****	29	21
23	24	25	28	33	32	32	28	28	28	29	30	30	29	32	40	45	45	46	56	55	50	49	****	48	37
24	41	36	34	35	33	30	25	28	28	30	31	30	28	37	38	37	55	61	64	74	76	59	****	83	43
25	72	50	53	71	55	62	51	63	57	71	74	68	78	84	69	69	65	61	54	38	42	40	****	18	59
26	40	49	44	44	38	33	27	43	44	31	27	26	30	24	29	33	38	31	37	34	29	28	****	26	34
27	26	19	19	15	15	12	16	35	41	47	46	60	61	52	62	61	64	62	54	26	48	58	****	70	42
28	75	70	60	39	65	66	61	64	66	58	64	69	74	69	69	78	82	109	111	132	122	69	****	77	76
29	20	60	78	49	49	54	16	20	25	28	23	24	23	31	26	34	33	33	25	26	19	26	****	22	32
30	17	12	9	18	21	18	34	38	64	70	68	38	49	50	57	57	62	52	13	13	6	8	****	25	35
31	7	16	39	17	65	55	53	42	57	65	64	46	14	12	15	15	13	29	42	13	8	6	****	26	31

MONTHLY STATISTICS:

GEOM	ARITH	<-----PERCENTILE----->							<-----RANGE----->			STD GEOM	PERCENT	NO. OF TIMES ABOVE OBJECTIVE	
MEAN	MEDIAN	MEAN	50	90	95	98	99	1-HR	24-HR	DEVIATION	VALID DATA	1-HR	24-HR		
28	31	35	31	64	71	81	87	3	- 132	2	96	0	0		

- NOTES:
1. FLAGS FOR INVALID DATA :
 - **** : DAILY ZERO/SPAN CHECK
 - D : DYNAMIC CALIBRATION
 - T : TELEMETRY/DATALOGGR/ANALYZER FAULT
 - M : MAINTENANCE OR MACHINE SHUTDOWN
 - P : POWER FAILURE
 2. BRACKETED READINGS EXCEED 1-HR OBJECTIVE 300 OR 24-HR OBJECTIVE 150

THE HONGKONG ELECTRIC COMPANY, LTD.
AIR QUALITY DATA MONTHLY TIME SERIES REPORT

STATION : QUEEN MARY HOSPITAL
POLLUTANT : SULPHUR DIOXIDE

MONTH: FEBRUARY

YEAR : 2010
UNIT : MICROGRAMS/CUBIC METER

DAY	1	2	3	4	5	6	7	8	9	10	11	12	13	14	15	16	17	18	19	20	21	22	23	24	MEAN
1	7	3	2	2	2	3	2	4	23	50	45	22	5	7	8	19	10	6	4	5	3	2	****	2	10
2	3	1	2	4	1	2	0	0	0	1	1	0	0	0	0	1	1	1	1	1	1	1	****	2	1
3	1	1	6	7	13	11	4	2	2	5	14	9	3	2	2	2	1	1	1	2	2	1	****	1	4
4	1	1	1	1	1	1	1	1	2	2	2	2	2	3	3	3	2	2	1	1	1	2	****	2	2
5	2	2	1	1	2	2	2	1	1	1	2	2	2	2	2	2	2	1	1	2	1	1	****	2	2
6	1	1	2	1	1	1	1	1	1	1	1	1	1	2	2	1	1	1	1	2	2	1	****	1	1
7	1	1	1	1	2	5	3	3	2	1	1	1	1	1	1	0	0	1	1	1	4	2	****	1	1
8	2	4	10	12	16	19	27	34	24	32	10	3	2	1	1	1	1	1	1	1	1	1	****	1	9
9	1	2	1	1	1	1	2	2	2	2	2	2	2	2	2	3	7	6	4	4	6	6	****	6	3
10	7	5	5	4	3	3	3	3	4	7	5	5	4	3	4	3	4	5	5	4	4	5	****	3	4
11	2	1	2	2	5	4	4	3	4	6	14	19	13	12	10	9	6	7	5	5	4	4	****	10	7
12	7	17	32	40	22	14	16	8	11	15	22	15	9	14	12	14	12	8	5	5	9	16	****	2	14
13	2	2	2	2	3	3	1	2	2	2	2	2	2	2	2	2	1	1	2	1	1	1	****	1	2
14	2	1	2	2	2	2	2	3	5	3	10	9	6	5	8	10	11	9	10	12	18	10	****	15	7
15	15	7	6	9	11	18	22	14	13	15	14	15	15	15	12	11	14	20	13	19	15	8	****	5	13
16	4	8	11	3	3	2	3	3	9	12	19	19	17	13	7	6	3	4	4	5	3	3	****	3	7
17	5	5	2	2	2	2	2	3	4	3	6	5	5	10	6	7	6	5	4	3	3	3	****	4	4
18	3	3	3	3	4	4	4	4	4	4	4	3	4	4	3	3	3	6	8	5	1	2	****	1	4
19	1	1	1	1	2	2	1	4	8	12	12	17	12	9	10	13	16	8	4	6	11	5	****	3	7
20	4	4	4	3	2	2	2	3	4	5	16	25	40	35	16	14	10	19	15	16	4	4	****	13	11
21	5	4	4	3	4	6	11	13	9	10	31	43	42	18	17	16	6	3	3	3	3	3	****	3	11
22	3	3	3	3	3	3	3	4	9	15	16	13	14	26	19	24	25	15	24	16	12	7	****	12	12
23	16	15	18	30	19	41	19	5	5	10	29	32	14	6	4	2	3	2	2	2	2	2	****	1	12
24	2	1	2	1	1	1	1	1	3	6	4	4	4	2	4	4	4	6	2	1	2	2	****	2	3
25	3	3	4	3	2	2	6	3	8	23	13	10	9	12	17	12	7	4	4	5	5	6	****	6	7
26	3	4	3	3	2	2	2	2	4	6	17	17	9	6	8	81	47	23	7	4	3	3	****	3	11
27	5	7	3	9	13	7	3	2	1	3	6	5	4	5	6	10	5	5	4	3	1	1	****	1	5
28	1	1	2	2	3	1	1	2	1	1	2	1	1	1	2	3	2	1	2	1	1	1	****	1	2

MONTHLY STATISTICS:

GEOM	ARITH					PERCENTILE					RANGE			STD GEOM	PERCENT	NO. OF TIMES ABOVE OBJECTIVE	
MEAN	MEDIAN	MEAN	50	90	95	98	99	1-HR	24-HR	DEVIATION	VALID DATA	1-HR	24-HR				
4	3	6	3	15	19	32	41	0	- 81	3	96	0	0				

- NOTES:
1. FLAGS FOR INVALID DATA :
 - **** : DAILY ZERO/SPAN CHECK
 - D : DYNAMIC CALIBRATION
 - T : TELEMETRY/DATALOGGR/ANALYZER FAULT
 - M : MAINTENANCE OR MACHINE SHUTDOWN
 - P : POWER FAILURE
 2. BRACKETED READINGS EXCEED 1-HR OBJECTIVE 800 OR 24-HR OBJECTIVE 350

THE HONGKONG ELECTRIC COMPANY, LTD.
AIR QUALITY DATA MONTHLY TIME SERIES REPORT

STATION : QUEEN MARY HOSPITAL
POLLUTANT : NITROGEN DIOXIDE

MONTH: FEBRUARY

YEAR : 2010
UNIT : MICROGRAMS/CUBIC METER

DAY	1	2	3	4	5	6	7	8	9	10	11	12	13	14	15	16	17	18	19	20	21	22	23	24	MEAN
1	22	5	10	5	6	7	8	34	55	57	41	24	13	18	20	28	23	20	28	27	17	6	****	12	21
2	12	5	5	7	4	6	8	16	20	14	14	11	11	12	12	14	15	20	44	26	17	19	****	22	15
3	9	15	28	27	47	38	29	15	34	46	52	35	30	42	16	23	17	14	16	17	15	14	****	20	26
4	16	7	6	7	7	7	6	16	17	38	44	35	39	36	36	47	39	39	24	39	44	40	****	29	27
5	31	17	13	11	7	7	8	15	26	16	28	40	24	25	15	21	29	12	12	10	10	7	****	12	17
6	8	7	11	7	9	6	8	8	13	15	18	15	20	34	35	27	26	27	23	17	15	11	****	13	16
7	8	9	7	8	19	27	22	24	21	12	10	10	17	12	6	8	8	8	14	12	32	28	****	23	15
8	24	39	45	33	37	33	45	43	43	58	45	13	14	14	14	19	13	7	6	6	6	6	****	5	25
9	5	5	4	2	3	3	4	4	5	5	6	7	7	6	7	10	14	13	9	6	12	12	****	11	7
10	12	8	6	4	4	4	7	10	15	16	14	12	10	10	11	9	13	15	15	12	13	14	****	9	11
11	7	7	6	9	19	14	13	8	10	12	18	21	25	22	18	14	13	12	14	13	10	8	****	23	14
12	18	29	39	38	32	29	31	32	38	41	42	43	41	39	42	46	49	51	49	48	47	44	****	39	39
13	38	37	33	30	26	21	13	17	18	20	17	19	20	18	20	22	17	14	17	17	12	12	****	9	20
14	8	10	8	6	7	7	11	15	28	22	42	40	44	44	33	36	40	39	44	42	36	35	****	38	28
15	32	24	22	24	26	27	29	27	28	28	28	27	29	30	31	34	35	39	40	39	34	33	****	29	30
16	29	27	30	8	7	11	20	31	36	38	35	32	34	35	35	34	29	27	38	37	39	37	****	32	30
17	29	25	17	14	10	9	12	31	38	38	39	33	30	37	31	37	34	36	45	45	29	26	****	44	30
18	34	33	23	14	17	18	22	35	42	49	36	38	36	43	42	46	50	53	55	48	44	33	****	48	37
19	37	30	31	24	19	15	24	43	53	61	57	59	51	48	50	53	63	66	69	66	68	61	****	52	48
20	43	36	29	24	21	18	21	34	36	49	50	47	52	54	36	39	36	67	78	81	57	61	****	74	46
21	50	50	45	26	24	28	40	49	49	46	46	61	57	49	52	46	56	31	14	11	7	5	****	5	37
22	4	5	5	2	2	2	10	18	39	71	72	66	65	71	67	77	83	93	93	81	80	64	****	63	49
23	48	42	30	46	35	69	45	16	56	81	79	66	44	24	19	15	25	31	11	10	7	6	****	6	35
24	7	5	5	4	4	6	6	7	15	21	9	13	14	9	9	8	7	16	5	5	9	7	****	6	9
25	10	7	9	7	5	15	22	15	21	32	16	14	17	17	22	19	13	14	12	11	11	14	****	14	15
26	10	25	14	15	14	11	11	19	20	15	20	18	14	15	10	47	41	31	10	10	11	11	****	13	18
27	13	14	5	18	28	13	7	8	12	18	18	10	10	10	14	22	17	29	26	15	11	8	****	4	14
28	3	4	4	7	10	6	8	6	6	8	8	9	7	7	6	7	5	5	6	6	5	5	****	5	6

MONTHLY STATISTICS:

GEOM	ARITH	<-----PERCENTILE----->					<-----RANGE----->			STD GEOM	PERCENT	NO. OF TIMES ABOVE OBJECTIVE			
MEAN	MEDIAN	MEAN	50	90	95	98	99	1-HR	24-HR	DEVIATION	VALID DATA	1-HR	24-HR		
18	19	24	19	48	58	71	80	2	- 93	6	- 49	2	96	0	0

- NOTES:
1. FLAGS FOR INVALID DATA :
 - **** : DAILY ZERO/SPAN CHECK
 - D : DYNAMIC CALIBRATION
 - T : TELEMETRY/DATALOGGR/ANALYZER FAULT
 - M : MAINTENANCE OR MACHINE SHUTDOWN
 - P : POWER FAILURE
 2. BRACKETED READINGS EXCEED 1-HR OBJECTIVE 300 OR 24-HR OBJECTIVE 150

THE HONGKONG ELECTRIC COMPANY, LTD.
AIR QUALITY DATA MONTHLY TIME SERIES REPORT

STATION : QUEEN MARY HOSPITAL
POLLUTANT : SULPHUR DIOXIDE

MONTH: MARCH

YEAR : 2010
UNIT : MICROGRAMS/CUBIC METER

DAY	1	2	3	4	5	6	7	8	9	10	11	12	13	14	15	16	17	18	19	20	21	22	23	24	MEAN
1	1	1	1	1	1	1	1	1	2	2	5	1	1	1	1	1	1	1	1	1	2	1	****	2	1
2	2	1	1	1	3	2	1	1	2	3	3	5	4	4	3	2	7	3	3	2	0	0	****	2	3
3	1	0	1	3	1	0	1	2	3	3	1	3	1	5	3	2	2	2	2	3	2	3	****	4	2
4	3	3	5	4	4	5	4	3	5	6	11	5	6	4	6	6	6	7	6	9	7	7	****	8	6
5	8	4	10	5	5	4	6	9	8	9	9	8	5	6	6	5	5	4	6	4	3	2	****	2	6
6	2	3	2	2	2	5	4	4	6	8	7	9	7	8	5	4	8	5	4	4	4	3	****	3	5
7	3	4	7	17	55	59	18	14	12	10	9	8	4	5	12	8	3	3	3	4	3	3	****	3	11
8	2	2	2	2	2	2	2	2	3	3	2	2	2	2	2	2	2	6	5	14	16	6	****	10	4
9	5	5	2	2	2	2	2	2	2	2	2	4	5	5	5	5	4	5	5	5	3	4	****	7	4
10	10	9	12	17	19	19	20	19	18	17	16	18	21	18	21	21	24	22	23	19	19	22	****	12	18
11	12	14	16	26	11	11	9	8	9	9	9	12	17	12	12	9	8	9	8	6	4	8	****	2	11
12	6	11	4	5	6	5	6	21	25	36	30	30	39	23	5	3	16	6	11	10	10	8	****	24	15
13	19	16	16	11	10	16	19	30	21	19	37	52	26	17	19	36	11	6	6	3	3	3	****	3	17
14	3	3	3	3	3	3	6	23	13	6	10	4	5	3	2	2	2	2	2	2	2	2	****	2	5
15	2	3	2	3	2	2	2	2	2	2	3	4	35	24	21	35	14	10	8	5	2	3	****	3	8
16	4	36	52	58	58	59	46	23	12	10	7	6	3	3	3	3	4	3	3	3	3	2	****	1	17
17	1	1	2	3	3	3	3	3	8	6	5	5	22	21	19	29	23	31	19	25	29	51	****	36	15
18	42	35	36	49	57	55	69	77	72	63	58	75	65	47	37	33	32	13	10	10	10	11	****	11	42
19	9	12	10	9	7	6	7	8	26	50	18	6	6	9	12	10	10	6	4	4	3	4	****	8	11
20	15	12	15	12	4	2	0	1	4	24	27	6	6	4	9	10	17	14	11	9	10	19	****	53	12
21	36	19	21	27	29	52	59	54	102	114	92	56	73	63	36	21	6	5	5	4	3	3	****	3	38
22	2	2	2	2	2	2	2	2	6	16	21	26	33	32	41	10	2	2	2	2	7	5	****	1	10
23	2	4	1	1	1	1	2	3	1	13	13	17	13	1	6	1	1	1	1	1	1	0	****	0	4
24	1	1	1	1	7	2	1	1	1	1	1	1	1	2	2	2	2	2	2	2	2	2	****	18	2
25	33	21	7	3	2	3	3	4	5	5	6	5	6	6	6	6	6	6	6	5	5	6	****	8	7
26	8	8	8	9	9	9	8	10	10	10	10	9	7	7	7	7	8	9	7	8	7	7	****	5	8
27	4	4	4	5	5	6	6	6	7	6	8	8	13	20	19	19	32	39	39	23	26	36	****	36	16
28	44	42	21	20	17	15	15	18	23	25	21	19	12	13	12	10	10	9	7	7	5	4	****	5	16
29	5	4	4	5	6	7	7	8	8	8	8	7	7	7	7	7	7	6	5	4	4	4	****	3	6
30	2	2	2	2	2	2	2	2	2	3	2	3	3	3	2	2	2	2	2	2	2	2	****	2	2
31	2	2	2	1	1	1	1	1	1	3	15	2	2	1	0	0	0	0	0	0	0	0	****	0	2

MONTHLY STATISTICS:

GEOM	ARITH	<-----PERCENTILE----->					<-----RANGE----->				STD GEOM	PERCENT	NO. OF TIMES			
MEAN	MEDIAN	50	90	95	98	99	1-HR		24-HR		DEVIATION	VALID DATA	1-HR	24-HR		
5	5	5	26	39	58	67	0	-	114	1	-	42	3	96	0	0

- NOTES:
1. FLAGS FOR INVALID DATA :
 - **** : DAILY ZERO/SPAN CHECK
 - D : DYNAMIC CALIBRATION
 - T : TELEMETRY/DATALOGGR/ANALYZER FAULT
 - M : MAINTENANCE OR MACHINE SHUTDOWN
 - P : POWER FAILURE
 2. BRACKETED READINGS EXCEED 1-HR OBJECTIVE 800 OR 24-HR OBJECTIVE 350

THE HONGKONG ELECTRIC COMPANY, LTD.
AIR QUALITY DATA MONTHLY TIME SERIES REPORT

STATION : QUEEN MARY HOSPITAL
POLLUTANT : NITROGEN DIOXIDE

MONTH: MARCH

YEAR : 2010
UNIT : MICROGRAMS/CUBIC METER

DAY	1	2	3	4	5	6	7	8	9	10	11	12	13	14	15	16	17	18	19	20	21	22	23	24	MEAN
1	4	4	2	3	2	3	5	5	18	19	17	9	9	9	8	5	5	5	5	4	8	4	****	8	7
2	8	5	4	4	9	7	8	14	18	18	17	15	12	13	14	14	21	17	14	13	8	4	****	9	12
3	7	3	6	6	4	3	1	7	8	9	6	9	5	10	7	5	7	6	5	6	5	5	****	6	6
4	2	4	7	5	7	11	6	6	6	8	13	9	11	11	16	14	17	15	11	18	9	10	****	14	10
5	12	5	10	6	6	5	10	14	17	17	14	14	10	10	9	9	10	12	15	11	9	6	****	8	10
6	7	5	5	3	4	9	8	11	15	15	12	14	13	11	12	10	17	14	15	12	11	10	****	8	11
7	7	5	15	31	35	33	31	33	31	29	30	35	35	34	33	33	31	34	37	32	35	32	****	31	30
8	29	22	18	16	15	16	22	30	35	32	29	22	31	41	43	51	40	50	41	43	40	37	****	30	32
9	24	20	14	12	10	5	0	0	6	40	41	28	29	24	20	22	24	27	26	31	29	35	****	18	21
10	17	14	8	10	11	10	24	30	39	56	47	39	46	47	43	42	55	65	59	44	33	57	****	41	36
11	60	22	37	51	11	12	24	33	64	46	37	42	35	27	27	28	33	61	88	67	33	82	****	18	41
12	54	68	16	19	22	18	24	76	85	91	90	84	95	100	75	86	97	89	93	91	89	88	****	84	71
13	82	69	64	59	35	41	57	68	66	64	66	69	58	53	54	65	50	59	27	19	21	13	****	7	51
14	5	5	4	4	6	10	17	52	35	20	39	10	24	11	8	7	6	6	5	6	3	4	****	5	13
15	3	5	3	6	4	6	9	20	18	21	20	16	29	32	35	46	35	29	52	37	33	51	****	23	23
16	23	55	48	46	45	43	40	38	46	49	44	41	32	27	38	42	46	37	44	41	39	34	****	16	40
17	13	11	12	11	12	12	16	41	60	56	61	47	58	53	59	78	77	95	101	121	115	140	****	103	59
18	100	107	106	101	94	81	83	79	83	83	87	97	98	87	70	62	84	81	87	123	103	120	****	117	93
19	92	94	62	81	25	24	55	32	81	88	57	19	24	23	27	31	33	30	42	36	22	10	****	80	46
20	122	88	105	58	15	6	4	11	39	77	57	30	24	21	41	42	58	70	61	49	39	69	****	101	52
21	89	80	81	62	41	62	79	83	87	102	111	98	109	93	62	45	17	18	19	18	13	17	****	11	61
22	11	8	8	6	6	7	6	12	38	59	55	55	65	65	58	33	31	23	34	21	59	44	****	14	31
23	10	36	5	3	3	2	12	24	11	50	47	38	34	16	33	15	9	9	6	9	9	8	****	47	19
24	40	41	20	13	28	13	3	5	8	6	5	7	7	11	11	12	10	8	10	11	18	5	****	26	14
25	37	32	26	22	17	16	19	23	31	37	36	31	37	39	40	38	45	49	42	39	35	31	****	29	33
26	29	23	17	12	12	10	18	49	60	65	33	18	12	15	12	13	17	21	27	23	27	21	****	17	24
27	16	14	13	12	11	15	14	26	34	47	49	60	58	73	61	72	116	132	124	100	105	112	****	123	60
28	124	110	91	53	42	35	38	40	44	54	63	50	19	21	22	16	18	25	17	15	16	14	****	19	41
29	18	13	11	9	8	8	15	21	39	37	29	24	22	31	39	43	42	39	24	13	12	13	****	10	23
30	8	9	7	6	6	8	11	19	26	20	16	18	18	21	13	18	15	17	11	13	10	11	****	9	13
31	5	3	4	4	4	4	6	11	13	36	55	14	12	6	4	5	5	5	6	10	12	10	****	3	10

MONTHLY STATISTICS:

GEOM	ARITH	<-----PERCENTILE----->					<-----RANGE----->			STD GEOM	PERCENT	NO. OF TIMES	
MEAN	MEDIAN	50	90	95	98	99	1-HR		24-HR	DEVIATION	VALID DATA	1-HR	24-HR
21	22	22	80	94	110	121	0	-	140	3	96	0	0

- NOTES:
1. FLAGS FOR INVALID DATA :
 - **** : DAILY ZERO/SPAN CHECK
 - D : DYNAMIC CALIBRATION
 - T : TELEMETRY/DATALOGGR/ANALYZER FAULT
 - M : MAINTENANCE OR MACHINE SHUTDOWN
 - P : POWER FAILURE
 2. BRACKETED READINGS EXCEED 1-HR OBJECTIVE 300 OR 24-HR OBJECTIVE 150

THE HONGKONG ELECTRIC COMPANY, LTD.
AIR QUALITY DATA MONTHLY TIME SERIES REPORT

STATION : AP LEI CHAU
POLLUTANT : SULPHUR DIOXIDE

MONTH: JANUARY

YEAR : 2010
UNIT : MICROGRAMS/CUBIC METER

DAY	1	2	3	4	5	6	7	8	9	10	11	12	13	14	15	16	17	18	19	20	21	22	23	24	MEAN
1	12	11	10	9	9	10	10	11	13	12	13	13	12	10	10	9	9	9	8	9	8	8	****	7	10
2	7	7	6	6	9	6	6	6	7	20	11	13	32	21	42	49	45	34	31	16	7	4	****	4	17
3	2	2	2	2	2	2	3	5	4	5	3	3	3	3	3	4	4	5	4	3	4	4	****	5	3
4	4	5	5	4	4	4	4	4	5	4	8	5	5	3	4	4	4	3	4	3	3	4	****	6	4
5	4	5	5	5	4	4	4	5	8	8	6	6	4	5	6	6	5	4	5	6	6	6	****	6	5
6	5	5	4	4	5	4	5	5	4	3	3	3	3	4	5	39	18	7	6	4	5	****	6	7	
7	4	5	5	5	5	6	7	7	9	8	8	8	8	9	8	8	8	7	5	11	8	6	****	7	7
8	6	9	14	15	15	10	9	21	15	24	28	27	19	19	23	18	39	26	30	9	10	12	****	9	18
9	7	7	7	7	7	6	6	6	7	6	6	5	5	5	4	4	4	4	5	4	4	5	****	10	6
10	10	11	11	9	7	7	7	8	7	6	8	7	6	6	6	7	6	6	6	6	6	5	****	7	7
11	5	7	8	9	18	25	29	23	29	21	12	13	8	7	11	16	17	11	11	10	7	4	****	6	13
12	5	6	6	6	6	6	8	11	18	14	22	20	20	20	20	22	20	18	17	20	22	19	****	22	15
13	23	23	23	19	16	16	20	25	17	14	12	11	10	10	11	12	12	17	21	27	25	20	****	14	17
14	13	15	36	24	14	12	12	12	15	16	15	14	14	12	12	12	13	11	11	11	12	12	****	10	14
15	8	8	9	8	9	8	7	7	7	7	7	8	7	6	5	4	6	9	7	3	3	****	3	7	
16	3	6	15	15	16	15	27	22	16	14	14	15	14	13	12	14	13	9	8	7	6	5	****	8	13
17	10	5	6	8	8	9	9	11	12	15	15	11	11	22	17	14	12	11	11	9	7	6	****	9	11
18	6	6	8	8	8	7	6	7	7	8	9	9	9	9	9	8	12	10	12	10	8	7	****	8	8
19	6	6	6	6	5	5	5	6	7	6	6	6	7	7	7	7	6	7	6	7	7	7	****	9	6
20	8	7	6	6	6	6	6	6	6	6	6	6	6	6	6	5	5	5	3	3	4	2	****	5	5
21	3	3	3	2	1	2	2	3	3	3	5	4	4	4	3	2	2	3	2	3	3	3	****	3	3
22	1	2	2	2	2	3	2	2	2	3	4	3	3	5	6	6	4	5	4	4	4	5	****	5	3
23	3	3	3	3	4	4	5	5	6	5	4	4	4	5	5	6	6	6	6	7	7	7	****	9	5
24	6	7	8	8	7	7	6	8	8	7	7	7	6	6	6	6	5	4	3	4	23	6	****	12	7
25	35	24	46	28	25	24	25	33	29	33	60	27	21	18	17	23	24	9	10	7	5	5	****	7	23
26	5	5	6	5	5	5	5	5	5	5	5	4	4	4	4	3	3	3	4	6	5	****	7	5	
27	7	7	7	6	5	4	4	4	5	4	3	3	8	9	3	3	2	2	3	2	3	2	****	8	4
28	6	3	2	3	45	38	29	44	34	42	37	40	48	53	31	20	36	78	72	47	77	39	****	40	38
29	18	13	12	15	15	7	4	4	3	2	2	3	2	2	<----- D ----->	4	4	5	5	6	****	7	7		
30	5	5	5	5	5	5	8	8	7	7	7	6	5	6	4	4	3	4	4	3	2	3	****	3	5
31	1	1	1	2	20	24	14	38	24	9	7	5	4	5	4	5	15	20	47	57	32	32	****	19	17

MONTHLY STATISTICS:

GEOM	ARITH	<-----PERCENTILE----->							<-----RANGE----->			STD GEOM	PERCENT	NO. OF TIMES ABOVE OBJECTIVE	
MEAN	MEDIAN	MEAN	50	90	95	98	99	1-HR	24-HR	DEVIATION	VALID DATA	1-HR	24-HR		
7	7	10	7	22	31	42	48	1	- 78	2	95	0	0		

- NOTES:
1. FLAGS FOR INVALID DATA :
 - **** : DAILY ZERO/SPAN CHECK
 - D : DYNAMIC CALIBRATION
 - T : TELEMETRY/DATALOGGR/ANALYZER FAULT
 - M : MAINTENANCE OR MACHINE SHUTDOWN
 - P : POWER FAILURE
 2. BRACKETED READINGS EXCEED 1-HR OBJECTIVE 800 OR 24-HR OBJECTIVE 350

THE HONGKONG ELECTRIC COMPANY, LTD.
AIR QUALITY DATA MONTHLY TIME SERIES REPORT

STATION : AP LEI CHAU
 POLLUTANT : NITROGEN DIOXIDE
 MONTH: JANUARY
 YEAR : 2010
 UNIT : MICROGRAMS/CUBIC METER

DAY	1	2	3	4	5	6	7	8	9	10	11	12	13	14	15	16	17	18	19	20	21	22	23	24	MEAN
1	0	0	0	0	0	2	3	8	13	13	14	22	14	8	9	10	13	11	24	32	12	8	****	9	10
2	11	7	8	8	18	13	12	5	37	49	20	22	40	32	36	74	86	84	77	61	44	40	****	26	35
3	21	13	3	5	3	2	10	23	14	2	11	4	1	0	2	1	9	28	17	14	12	13	****	21	10
4	17	12	5	3	3	3	11	29	23	25	30	8	0	0	0	0	1	3	3	22	15	3	****	8	10
5	6	2	1	0	0	0	0	2	2	5	3	4	4	7	9	8	9	7	6	7	7	8	****	6	5
6	8	5	3	2	2	1	9	23	13	11	14	32	24	22	22	39	55	47	54	52	39	39	****	26	24
7	22	19	13	12	13	15	19	24	26	23	22	23	24	25	27	29	34	38	41	42	44	42	****	34	27
8	38	34	28	27	26	28	28	29	27	35	35	34	37	43	51	56	64	56	62	61	46	51	****	27	40
9	26	16	12	7	8	7	7	12	14	16	13	11	11	14	5	11	13	13	8	9	7	4	****	7	11
10	6	5	3	0	0	0	2	7	6	2	2	1	2	1	1	4	7	6	5	7	2	****	2	3	
11	5	0	0	0	26	42	40	43	43	40	36	38	29	35	41	42	45	43	46	49	49	43	****	37	34
12	32	23	14	14	11	13	23	32	34	32	36	40	47	51	56	57	64	71	71	80	85	71	****	52	44
13	55	37	28	18	17	19	37	59	53	26	18	14	6	4	7	2	5	21	45	74	108	118	****	72	37
14	80	91	75	33	15	10	7	9	10	10	12	8	6	4	11	18	19	21	38	14	14	8	****	2	22
15	4	3	0	0	1	2	8	14	13	15	13	11	4	2	6	14	18	18	12	14	25	58	****	26	12
16	28	10	12	11	8	6	10	32	31	27	40	25	20	14	6	7	5	16	22	18	11	10	****	7	16
17	8	8	2	2	4	2	6	5	8	10	11	4	2	24	8	2	0	1	15	14	2	7	****	0	6
18	0	0	0	0	0	0	0	4	15	4	10	3	0	0	4	8	4	7	9	4	5	****	2	3	
19	3	0	0	0	0	0	1	14	26	25	19	6	14	5	2	12	14	17	15	0	2	9	****	4	8
20	1	0	0	0	0	0	0	1	0	0	0	0	0	0	0	0	0	0	0	0	0	0	****	0	0
21	0	0	0	0	0	0	0	0	0	0	0	0	0	0	0	0	0	0	1	19	25	32	****	2	3
22	0	0	0	0	0	0	0	0	1	2	4	1	1	5	4	12	12	10	12	9	7	10	****	13	4
23	14	14	14	17	19	17	18	19	20	21	16	13	17	21	19	22	29	37	45	42	41	39	****	25	23
24	29	23	18	16	15	14	17	17	17	16	14	15	20	19	20	25	24	12	20	20	71	24	****	44	22
25	78	65	67	66	59	56	52	54	56	67	78	72	72	73	70	76	67	54	44	52	50	48	****	13	60
26	18	10	10	12	13	15	17	28	29	16	11	14	10	11	13	13	9	17	5	5	14	8	****	6	13
27	6	6	2	2	2	1	3	12	12	12	19	19	33	37	8	7	8	19	17	26	25	28	****	27	14
28	45	29	5	14	38	36	45	53	54	53	40	18	28	29	19	29	53	109	119	92	124	83	****	79	52
29	63	62	55	54	54	35	2	6	7	4	7	4	0	0	<----- D ----->	5	3	0	0	1	****	0	18		
30	1	0	0	0	1	3	8	12	17	15	13	9	6	4	1	0	0	0	5	24	0	12	****	0	6
31	0	0	1	16	54	68	44	61	39	19	5	1	0	0	0	0	7	9	45	48	20	21	****	12	20

MONTHLY STATISTICS:

GEOM	ARITH	<-----PERCENTILE----->							<-----RANGE----->				STD GEOM	PERCENT	NO. OF TIMES ABOVE OBJECTIVE	
MEAN	MEDIAN	MEAN	50	90	95	98	99	1-HR	24-HR	DEVIATION	VALID DATA	1-HR	24-HR			
10	12	19	12	51	65	78	86	0	- 124	5	95	0	0			

- NOTES:
1. FLAGS FOR INVALID DATA :
 - **** : DAILY ZERO/SPAN CHECK
 - D : DYNAMIC CALIBRATION
 - T : TELEMETRY/DATALOGGR/ANALYZER FAULT
 - M : MAINTENANCE OR MACHINE SHUTDOWN
 - P : POWER FAILURE
 2. BRACKETED READINGS EXCEED 1-HR OBJECTIVE 300 OR 24-HR OBJECTIVE 150

THE HONGKONG ELECTRIC COMPANY, LTD.
AIR QUALITY DATA MONTHLY TIME SERIES REPORT

STATION : AP LEI CHAU
POLLUTANT : SULPHUR DIOXIDE

MONTH: FEBRUARY

YEAR : 2010
UNIT : MICROGRAMS/CUBIC METER

DAY	1	2	3	4	5	6	7	8	9	10	11	12	13	14	15	16	17	18	19	20	21	22	23	24	MEAN
1	33	10	6	4	4	5	52	65	65	54	82	73	22	25	18	26	25	13	16	29	28	11	****	16	30
2	22	49	37	28	25	10	6	3	3	3	4	3	3	3	3	4	3	3	2	2	3	2	****	4	10
3	2	3	3	3	3	4	2	3	4	4	4	4	4	4	4	3	4	3	2	3	2	3	****	4	3
4	3	2	2	2	2	2	2	2	2	2	3	3	3	3	1	2	2	1	1	1	1	2	****	2	2
5	1	0	0	1	1	2	2	1	2	1	0	1	1	0	1	1	0	1	1	2	1	1	****	3	1
6	1	0	1	1	1	2	2	1	2	2	2	2	1	2	1	2	2	3	2	3	2	1	****	2	2
7	0	1	0	1	1	2	2	1	0	1	0	1	0	0	0	0	0	0	0	0	0	5	****	2	1
8	2	1	0	0	0	0	0	0	0	0	2	2	3	3	3	3	2	2	2	2	3	3	****	4	2
9	5	6	4	3	3	2	3	3	2	2	4	3	3	4	3	13	31	23	18	15	27	23	****	14	9
10	27	13	24	8	6	7	8	15	17	30	22	14	11	7	13	12	25	18	18	10	16	13	****	13	15
11	7	9	4	7	10	10	10	12	10	13	24	12	13	10	17	17	29	25	28	14	15	18	****	12	14
12	19	17	26	34	30	11	14	16	20	16	19	33	14	14	15	4	3	5	5	10	8	11	****	3	15
13	1	1	2	2	1	1	1	0	1	1	1	0	1	1	2	1	1	1	1	2	1	1	****	4	1
14	1	2	2	2	2	3	4	3	3	2	10	11	7	15	9	10	11	11	13	13	14	17	****	20	8
15	21	9	6	8	9	9	12	12	12	12	12	14	14	11	12	10	12	13	13	14	10	6	****	5	11
16	3	2	4	1	1	0	0	1	6	11	10	10	8	7	4	2	2	1	1	0	1	1	****	2	3
17	1	0	0	0	0	0	0	0	4	8	6	9	9	7	6	6	5	5	8	7	8	4	****	6	4
18	4	4	4	5	5	6	5	6	10	9	7	8	8	6	6	6	6	6	6	4	4	3	****	4	6
19	2	3	3	3	2	3	3	5	6	12	13	18	10	12	10	14	15	8	4	3	3	3	****	7	7
20	5	5	5	3	2	3	4	4	4	4	2	12	30	7	5	3	3	11	20	8	3	2	****	4	6
21	1	1	2	1	1	1	1	1	2	2	3	1	2	2	1	0	0	0	0	1	1	2	****	3	1
22	0	1	1	2	1	1	1	2	5	10	11	5	4	5	4	25	2	3	3	2	4	3	****	5	4
23	6	66	8	16	7	10	19	10	28	33	71	14	3	3	3	5	8	6	5	5	3	5	****	8	15
24	4	3	5	4	6	6	5	5	10	35	11	17	12	9	16	19	23	30	6	19	12	12	****	9	12
25	10	9	18	16	12	20	20	24	36	32	21	29	20	21	19	29	16	27	16	19	14	22	****	19	20
26	18	12	16	15	20	19	24	19	10	13	11	M	11	7	7	4	3	6	15	27	16	21	****	15	14
27	10	9	11	12	23	16	20	19	31	18	22	20	11	12	29	31	15	24	18	29	23	16	****	12	19
28	10	13	14	19	11	10	12	14	8	6	11	7	4	4	7	9	5	4	4	4	4	4	****	5	8

MONTHLY STATISTICS:

GEOM	ARITH	<-----PERCENTILE----->					<-----RANGE----->			STD GEOM	PERCENT	NO. OF TIMES ABOVE OBJECTIVE	
MEAN	MEDIAN	MEAN	50	90	95	98	99	1-HR	24-HR	DEVIATION	VALID DATA	1-HR	24-HR
5	5	9	5	21	28	34	53	0	- 82	4	96	0	0

- NOTES:
1. FLAGS FOR INVALID DATA :
 - **** : DAILY ZERO/SPAN CHECK
 - D : DYNAMIC CALIBRATION
 - T : TELEMETRY/DATALOGGR/ANALYZER FAULT
 - M : MAINTENANCE OR MACHINE SHUTDOWN
 - P : POWER FAILURE
 2. BRACKETED READINGS EXCEED 1-HR OBJECTIVE 800 OR 24-HR OBJECTIVE 350

THE HONGKONG ELECTRIC COMPANY, LTD.
AIR QUALITY DATA MONTHLY TIME SERIES REPORT

STATION : AP LEI CHAU
POLLUTANT : NITROGEN DIOXIDE

MONTH: FEBRUARY

YEAR : 2010
UNIT : MICROGRAMS/CUBIC METER

DAY	1	2	3	4	5	6	7	8	9	10	11	12	13	14	15	16	17	18	19	20	21	22	23	24	MEAN
1	24	15	29	13	17	33	49	52	46	30	29	30	11	23	18	23	25	11	15	31	32	29	****	16	26
2	21	18	17	19	16	6	11	4	7	9	12	10	4	7	8	12	8	5	15	19	9	8	****	8	11
3	10	11	4	2	3	6	14	13	20	16	14	11	10	8	11	12	17	19	16	13	8	9	****	5	11
4	4	4	3	1	0	1	3	9	12	14	13	11	18	13	13	17	21	22	21	12	7	9	****	5	10
5	6	1	0	0	0	1	2	10	16	14	11	13	10	9	14	14	13	17	20	17	14	13	****	12	10
6	6	2	0	0	1	1	5	9	13	16	16	9	8	13	15	15	13	16	16	15	9	9	****	6	9
7	4	0	0	1	0	1	4	4	5	6	9	10	12	8	12	11	16	6	8	19	8	21	****	0	7
8	18	11	0	0	0	1	2	27	20	4	10	4	3	7	14	28	35	27	12	0	0	0	****	0	10
9	0	1	0	0	0	0	0	0	0	0	0	0	0	0	0	2	11	14	12	4	12	16	****	4	3
10	10	1	6	0	0	3	1	2	3	15	6	0	1	0	1	2	7	6	5	1	4	2	****	1	3
11	0	1	0	0	2	1	1	2	1	2	6	0	2	0	5	6	9	9	12	2	2	2	****	1	3
12	4	14	32	32	29	21	25	28	32	34	32	33	34	34	37	39	42	44	44	44	43	40	****	33	33
13	35	32	27	22	14	7	10	11	14	10	13	15	11	6	6	8	5	5	2	10	3	3	****	1	12
14	2	1	1	0	0	0	0	2	3	18	30	34	26	37	42	36	34	34	34	32	31	30	****	29	20
15	28	23	22	20	19	18	21	22	22	24	24	22	23	22	24	27	29	31	35	34	35	33	****	33	26
16	33	26	20	12	8	9	14	23	31	34	32	30	33	30	32	29	17	23	23	21	27	34	****	26	25
17	29	22	16	13	10	10	13	23	35	41	32	31	31	30	29	32	39	40	48	50	53	50	****	43	31
18	39	28	17	13	10	12	28	39	42	43	43	42	39	39	42	46	52	53	52	53	47	46	****	44	38
19	49	30	25	25	16	16	21	44	48	55	55	56	51	48	47	48	57	66	65	62	60	47	****	28	44
20	33	32	27	22	18	15	16	37	34	35	27	28	31	16	9	5	14	41	70	53	73	49	****	34	31
21	39	22	12	10	9	9	14	25	35	22	10	9	7	6	5	4	6	12	5	3	1	2	****	0	12
22	0	0	0	0	0	0	0	9	33	48	58	47	45	40	24	55	23	22	20	21	25	54	****	40	24
23	45	65	27	43	15	20	41	59	65	60	57	15	0	0	0	1	4	1	0	0	0	0	****	0	22
24	0	0	0	0	0	0	0	1	4	15	1	19	2	2	6	5	8	19	0	15	7	1	****	1	5
25	3	0	6	3	1	3	3	5	16	12	1	2	0	1	1	4	3	5	1	3	1	2	****	1	3
26	1	0	2	2	3	3	8	9	3	5	2	M	5	3	1	0	0	0	2	11	5	7	****	2	3
27	0	0	0	1	7	2	2	3	4	1	4	1	1	1	6	14	1	2	1	9	2	0	****	0	3
28	0	0	0	5	1	0	0	1	0	0	2	2	0	0	0	0	0	0	0	0	0	0	****	0	0

MONTHLY STATISTICS:

GEOM		ARITH	<-----PERCENTILE----->					<-----RANGE----->			STD GEOM	PERCENT	NO. OF TIMES ABOVE OBJECTIVE	
MEAN	MEDIAN	MEAN	50	90	95	98	99	1-HR		24-HR	DEVIATION	VALID DATA	1-HR	24-HR
9	11	16	11	40	48	57	61	0	-	73	4	96	0	0

- NOTES:
1. FLAGS FOR INVALID DATA :
 - **** : DAILY ZERO/SPAN CHECK
 - D : DYNAMIC CALIBRATION
 - T : TELEMETRY/DATALOGGR/ANALYZER FAULT
 - M : MAINTENANCE OR MACHINE SHUTDOWN
 - P : POWER FAILURE
 2. BRACKETED READINGS EXCEED 1-HR OBJECTIVE 300 OR 24-HR OBJECTIVE 150

THE HONGKONG ELECTRIC COMPANY, LTD.
AIR QUALITY DATA MONTHLY TIME SERIES REPORT

STATION : AP LEI CHAU
POLLUTANT : SULPHUR DIOXIDE

MONTH: MARCH

YEAR : 2010
UNIT : MICROGRAMS/CUBIC METER

DAY	1	2	3	4	5	6	7	8	9	10	11	12	13	14	15	16	17	18	19	20	21	22	23	24	MEAN
1	2	2	2	3	3	2	2	3	2	2	3	2	2	2	2	2	2	2	3	3	7	9	****	6	3
2	5	13	7	6	18	20	10	17	20	12	18	17	9	17	10	30	30	25	29	12	8	17	****	39	17
3	19	12	27	27	11	10	6	9	5	6	5	11	5	10	6	3	8	7	4	6	6	6	****	8	9
4	5	7	15	15	13	16	9	9	13	17	31	13	27	16	32	24	13	18	22	51	24	22	****	33	19
5	20	28	23	17	20	20	18	25	19	37	31	34	24	17	15	13	14	10	16	11	11	18	****	9	20
6	10	11	15	25	12	22	23	27	35	23	18	24	19	26	12	11	22	13	16	37	17	14	****	21	20
7	18	22	29	23	22	51	32	18	20	15	17	16	10	6	6	32	9	5	5	4	5	****	5	16	
8	3	3	3	4	4	4	4	4	4	3	3	3	3	2	2	3	2	3	7	13	13	9	****	8	5
9	4	6	2	0	0	0	0	0	3	3	3	3	4	5	5	5	4	5	4	5	3	3	****	9	3
10	11	10	13	20	22	22	23	22	22	19	17	19	23	19	20	15	26	21	22	23	21	21	****	11	19
11	12	14	14	15	18	18	9	8	9	9	10	10	10	10	10	10	12	12	10	9	8	7	****	8	11
12	6	6	6	6	8	7	5	7	28	49	48	30	73	40	16	5	35	27	7	6	12	22	****	36	21
13	39	15	7	30	21	17	53	34	21	11	8	6	5	5	4	5	6	5	5	5	5	4	****	4	14
14	3	3	4	4	4	3	3	3	3	3	3	3	3	4	4	3	4	4	4	3	3	2	****	5	3
15	3	3	3	3	3	3	3	3	4	8	7	5	18	14	10	13	22	10	5	5	11	12	****	21	8
16	24	60	49	61	57	59	52	34	18	14	6	4	3	3	3	4	3	3	2	1	1	****	3	20	
17	2	2	2	2	3	3	3	4	4	4	3	4	4	6	5	5	12	13	24	20	23	32	****	53	10
18	63	77	87	86	90	59	49	53	87	101	132	110	73	49	42	58	34	13	12	11	11	10	****	12	57
19	11	11	10	7	8	9	9	8	8	10	9	11	9	9	13	8	10	12	18	34	25	20	****	18	12
20	19	12	10	8	6	5	5	58	22	37	60	12	15	13	8	17	20	25	40	43	39	75	****	41	26
21	22	31	27	25	30	28	34	82	119	107	129	93	85	46	69	25	8	5	5	3	2	2	****	2	43
22	0	0	1	1	1	1	1	1	1	2	2	3	3	7	3	4	3	4	4	3	4	5	****	6	3
23	4	3	3	4	3	3	3	3	3	4	3	3	3	3	3	3	3	3	3	4	4	4	****	5	3
24	4	4	3	3	3	2	3	3	6	6	5	6	5	5	5	5	4	4	4	4	4	5	****	11	5
25	29	24	9	4	3	3	3	3	5	7	7	8	7	8	8	9	8	7	7	6	5	6	****	7	8
26	6	7	8	8	9	8	8	9	10	10	11	10	9	9	9	9	10	11	9	9	7	8	****	8	9
27	5	5	5	5	5	6	8	7	8	7	8	10	13	15	10	25	35	36	24	18	34	45	****	28	16
28	30	42	31	19	16	18	16	12	13	16	25	27	23	15	14	11	11	10	7	7	6	4	****	6	17
29	5	5	5	6	6	7	8	8	9	10	9	8	9	7	8	9	7	7	6	4	5	6	****	6	7
30	3	3	3	2	2	2	3	3	3	3	3	4	4	4	4	3	3	3	3	2	2	2	****	4	3
31	2	2	2	2	2	2	2	2	2	3	4	4	4	4	3	2	2	3	3	4	3	2	****	3	3

MONTHLY STATISTICS:

GEOM	ARITH	<-----PERCENTILE----->					<-----RANGE----->					STD GEOM	PERCENT	NO. OF TIMES			
MEAN	MEDIAN	50	90	95	98	99	1-HR				24-HR	DEVIATION	VALID DATA	1-HR	24-HR		
8	8	8	31	49	74	89	0	-	132		3	-	57	3	96	0	0

- NOTES:
1. FLAGS FOR INVALID DATA :
 - **** : DAILY ZERO/SPAN CHECK
 - D : DYNAMIC CALIBRATION
 - T : TELEMETRY/DATALOGGR/ANALYZER FAULT
 - M : MAINTENANCE OR MACHINE SHUTDOWN
 - P : POWER FAILURE
 2. BRACKETED READINGS EXCEED 1-HR OBJECTIVE 800 OR 24-HR OBJECTIVE 350

THE HONGKONG ELECTRIC COMPANY, LTD.
AIR QUALITY DATA MONTHLY TIME SERIES REPORT

STATION : AP LEI CHAU
POLLUTANT : NITROGEN DIOXIDE

MONTH: MARCH

YEAR : 2010
UNIT : MICROGRAMS/CUBIC METER

DAY	1	2	3	4	5	6	7	8	9	10	11	12	13	14	15	16	17	18	19	20	21	22	23	24	MEAN	
1	0	0	0	0	0	0	0	0	0	1	3	1	0	0	0	0	0	0	0	0	2	4	****	2	0	
2	2	3	1	1	14	6	2	8	5	2	5	5	0	2	0	8	12	8	19	4	1	3	****	22	6	
3	5	1	19	19	1	1	0	0	0	0	0	2	0	1	0	0	1	0	0	0	1	0	****	1	2	
4	0	1	8	10	7	11	3	1	3	3	8	1	13	3	14	7	5	7	14	30	10	13	****	18	8	
5	8	12	14	8	3	5	4	10	7	11	10	10	8	6	2	5	3	3	10	1	2	6	****	0	6	
6	0	0	1	7	3	10	14	12	10	7	5	8	4	7	2	1	9	4	8	16	7	9	****	5	6	
7	6	8	16	28	26	25	24	23	24	23	24	25	21	21	18	27	22	23	24	23	19	18	****	14	21	
8	12	12	10	7	4	4	5	8	13	10	10	10	10	14	23	27	41	42	41	39	41	37	****	25	19	
9	27	25	16	11	9	10	13	21	36	44	46	37	24	27	26	29	29	35	35	37	27	25	****	20	26	
10	17	11	6	4	4	7	14	35	47	46	38	46	46	36	31	22	44	44	44	40	56	60	****	67	33	
11	59	38	34	39	58	54	30	42	36	23	10	13	12	10	9	8	7	15	41	51	62	43	****	24	31	
12	19	27	17	8	11	15	28	67	69	92	82	76	95	94	79	59	85	84	69	83	81	85	****	80	61	
13	84	68	38	63	47	33	65	51	58	58	33	15	8	8	12	6	11	35	16	26	14	17	****	16	34	
14	20	11	3	1	4	4	4	7	13	7	0	0	0	0	0	0	0	0	0	0	0	0	****	0	3	
15	0	0	0	0	0	0	0	0	0	5	0	0	2	2	3	5	14	4	21	13	7	44	****	42	7	
16	41	38	36	34	33	32	31	27	33	41	23	22	14	17	17	17	23	30	29	19	20	10	****	4	26	
17	2	3	2	2	1	3	5	16	21	22	20	19	8	16	26	34	35	39	50	54	66	76	****	73	26	
18	91	92	91	88	91	82	87	87	84	84	85	94	84	52	33	48	24	8	13	12	5	14	****	18	59	
19	32	12	28	39	28	3	8	35	10	9	4	3	0	0	4	0	1	17	31	43	31	31	****	20	17	
20	24	10	17	7	5	12	28	81	54	58	68	18	18	14	11	25	30	39	76	94	106	104	****	78	43	
21	52	79	83	83	83	83	83	84	92	93	109	103	79	41	65	31	10	2	3	2	2	5	****	3	55	
22	4	1	0	0	1	3	6	13	13	12	2	0	0	6	0	2	3	0	0	1	4	5	****	4	3	
23	4	0	0	0	2	0	2	23	22	1	1	0	0	0	0	0	0	0	0	0	0	0	5	****	21	4
24	36	34	13	20	0	0	0	0	1	0	0	0	0	0	0	0	0	0	0	0	0	0	****	8	5	
25	22	19	14	11	8	5	7	14	23	32	31	30	33	37	36	36	40	44	48	30	29	33	****	24	26	
26	21	15	11	8	6	7	15	29	46	30	20	9	0	1	0	0	3	7	3	10	8	3	****	2	11	
27	3	2	1	2	2	4	9	28	22	27	28	29	39	32	13	64	83	90	65	67	100	101	****	82	39	
28	77	98	96	83	40	20	20	21	25	30	33	34	19	7	7	2	1	3	4	4	5	1	****	3	28	
29	3	0	0	0	0	0	2	1	7	6	5	4	6	7	7	8	6	5	2	0	0	0	****	1	3	
30	0	0	0	0	0	0	1	9	9	4	5	6	2	3	0	5	5	12	7	8	2	1	****	0	3	
31	0	0	0	0	0	0	0	4	8	6	9	1	0	0	0	0	0	0	0	0	0	0	****	0	1	

MONTHLY STATISTICS:

GEOM	ARITH	<-----PERCENTILE----->					<-----RANGE----->			STD GEOM	PERCENT	NO. OF TIMES	
MEAN	MEDIAN	50	90	95	98	99	1-HR	24-HR	DEVIATION	VALID DATA	1-HR	24-HR	
9	9	9	59	83	92	96	0	- 109	6	96	0	0	

- NOTES:
1. FLAGS FOR INVALID DATA :
 - **** : DAILY ZERO/SPAN CHECK
 - D : DYNAMIC CALIBRATION
 - T : TELEMETRY/DATALOGGR/ANALYZER FAULT
 - M : MAINTENANCE OR MACHINE SHUTDOWN
 - P : POWER FAILURE
 2. BRACKETED READINGS EXCEED 1-HR OBJECTIVE 300 OR 24-HR OBJECTIVE 150

THE HONGKONG ELECTRIC COMPANY, LTD.
AIR QUALITY DATA MONTHLY TIME SERIES REPORT

STATION : CHEUNG CHAU
POLLUTANT : SULPHUR DIOXIDE

MONTH: JANUARY

YEAR : 2010
UNIT : MICROGRAMS/CUBIC METER

DAY	1	2	3	4	5	6	7	8	9	10	11	12	13	14	15	16	17	18	19	20	21	22	23	24	MEAN
1	15	16	14	10	9	11	13	12	15	16	17	17	20	15	14	10	10	12	14	12	13	14	****	12	13
2	11	12	12	10	10	12	16	12	14	17	13	24	23	27	23	27	26	34	18	8	3	8	****	14	16
3	8	7	15	23	7	4	5	11	21	11	7	14	13	7	7	4	4	5	11	7	6	6	****	8	9
4	7	6	11	9	7	8	8	11	10	15	10	11	9	8	6	5	7	6	10	9	9	10	****	14	9
5	13	11	16	11	8	7	8	9	13	12	10	18	13	15	16	13	13	14	10	8	9	12	****	13	12
6	12	13	8	6	6	6	6	6	8	6	8	9	7	6	5	10	14	11	8	8	8	7	****	7	8
7	8	6	8	10	7	7	11	11	14	13	16	12	11	12	9	12	10	6	7	10	14	12	****	10	10
8	10	9	13	15	7	5	5	5	7	5	8	10	16	25	20	26	21	18	17	17	11	10	****	11	13
9	12	11	14	18	13	13	7	8	10	11	27	17	11	10	8	6	9	5	12	7	7	12	****	13	11
10	12	12	11	9	7	8	7	7	10	10	14	7	14	7	7	4	3	5	5	5	9	11	****	6	8
11	4	7	7	10	29	28	27	44	34	30	22	49	25	13	9	8	13	14	17	15	16	13	****	14	19
12	12	12	11	10	11	11	12	13	16	19	19	18	29	31	28	27	22	19	20	20	22	28	****	26	19
13	25	29	36	32	26	21	21	23	34	30	26	13	10	8	9	9	11	12	12	14	14	19	****	39	21
14	31	27	33	32	23	14	16	18	20	20	16	13	14	12	11	10	10	10	12	9	9	13	****	9	17
15	7	6	6	7	7	8	7	11	12	10	12	12	10	9	10	15	13	6	10	16	12	14	****	22	11
16	31	24	16	21	28	59	67	45	25	22	22	21	19	15	13	19	17	12	9	7	6	5	****	4	22
17	9	7	21	15	20	15	10	12	12	16	20	21	19	16	16	13	10	9	10	11	10	9	****	8	13
18	6	5	5	8	8	7	5	9	14	10	9	15	9	9	8	11	17	13	10	15	14	12	****	8	10
19	6	6	5	6	4	4	4	6	6	16	20	13	10	10	10	5	7	9	8	7	8	11	****	11	8
20	12	9	10	12	12	17	12	12	13	18	23	21	11	9	7	9	8	8	5	5	8	8	****	7	11
21	6	7	8	7	9	8	9	7	6	4	9	8	6	4	4	5	4	3	4	8	9	13	****	17	7
22	9	5	3	4	5	6	10	14	18	10	9	8	5	8	8	7	7	7	5	5	5	5	****	4	7
23	3	4	5	8	7	8	12	11	12	10	10	6	7	6	5	5	7	7	13	17	16	11	****	9	9
24	9	7	7	7	5	10	14	17	20	19	16	15	15	13	16	15	13	13	13	13	14	21	****	18	13
25	15	19	31	36	40	40	29	26	24	17	16	18	21	27	25	28	25	34	29	27	17	8	****	19	25
26	31	10	5	3	4	5	6	5	11	13	13	10	8	7	6	8	8	8	7	8	8	12	****	12	9
27	18	13	13	11	9	8	8	10	15	12	10	9	11	13	9	8	5	5	5	4	6	5	****	7	9
28	6	3	6	7	8	7	8	9	9	11	23	24	20	12	14	15	15	14	20	23	25	25	****	15	14
29	18	12	34	47	33	34	17	7	15	7	6	7	6	4	4	4	2	1	3	2	6	3	****	7	12
30	5	5	4	4	5	6	9	10	13	12	11	7	6	13	16	12	12	6	3	4	19	11	****	6	9
31	9	8	10	11	9	10	17	17	25	23	12	24	27	27	14	13	23	37	26	29	33	23	****	17	19

MONTHLY STATISTICS:

GEOM	ARITH	<-----PERCENTILE----->							<-----RANGE----->			STD GEOM	PERCENT	NO. OF TIMES ABOVE OBJECTIVE	
MEAN	MEDIAN	MEAN	50	90	95	98	99	1-HR	24-HR	DEVIATION	VALID DATA	1-HR	24-HR		
11	11	13	11	24	29	34	40	1	- 67	2	96	0	0		

- NOTES:
1. FLAGS FOR INVALID DATA :
 - **** : DAILY ZERO/SPAN CHECK
 - D : DYNAMIC CALIBRATION
 - T : TELEMETRY/DATALOGGR/ANALYZER FAULT
 - M : MAINTENANCE OR MACHINE SHUTDOWN
 - P : POWER FAILURE
 2. BRACKETED READINGS EXCEED 1-HR OBJECTIVE 800 OR 24-HR OBJECTIVE 350

THE HONGKONG ELECTRIC COMPANY, LTD.
AIR QUALITY DATA MONTHLY TIME SERIES REPORT

STATION : CHEUNG CHAU
 POLLUTANT : NITROGEN DIOXIDE
 MONTH: JANUARY
 YEAR : 2010
 UNIT : MICROGRAMS/CUBIC METER

DAY	1	2	3	4	5	6	7	8	9	10	11	12	13	14	15	16	17	18	19	20	21	22	23	24	MEAN
1	0	0	0	0	0	0	0	0	0	0	0	1	1	0	4	0	0	0	8	13	2	0	****	0	1
2	0	1	0	0	0	3	1	0	11	17	2	19	22	37	40	49	36	47	39	16	2	8	****	18	16
3	8	12	17	23	1	0	0	6	18	0	0	1	3	0	0	0	0	0	3	0	0	0	****	1	4
4	0	1	8	2	0	0	0	5	2	17	1	0	0	0	0	0	0	0	0	0	0	0	****	21	2
5	48	57	17	6	0	0	0	1	0	0	0	8	1	8	10	12	10	13	4	0	2	5	****	6	9
6	5	2	0	0	0	0	0	0	8	1	0	14	10	6	0	18	41	31	28	27	24	20	****	18	11
7	15	12	10	8	6	7	8	7	9	10	12	14	14	20	23	27	32	34	32	31	28	24	****	21	18
8	19	19	18	15	11	10	12	14	10	10	15	19	24	33	43	48	52	51	52	51	44	40	****	37	28
9	33	20	17	17	7	7	0	0	0	1	5	2	14	8	4	0	1	0	9	0	5	5	****	3	7
10	1	1	0	0	0	0	0	0	3	0	0	0	2	0	0	0	1	2	0	1	49	43	****	36	6
11	11	0	8	7	28	19	15	21	20	13	11	17	15	16	20	19	20	17	19	21	23	22	****	16	16
12	10	10	8	4	1	2	6	10	6	7	8	9	26	32	30	32	24	17	26	33	27	26	****	20	16
13	11	7	18	13	9	11	18	24	40	40	40	17	4	0	0	1	3	9	8	14	14	75	****	78	19
14	67	58	56	52	35	6	4	3	8	9	8	3	6	8	8	18	13	8	32	10	2	15	****	0	19
15	0	0	0	0	0	4	1	0	0	0	5	5	0	0	0	16	12	0	2	5	15	72	****	72	9
16	70	49	20	18	36	83	89	58	8	6	13	24	8	2	0	0	0	0	0	0	0	0	****	0	21
17	0	3	47	18	29	18	0	0	0	0	14	15	11	5	0	0	0	0	0	0	0	0	****	0	7
18	0	0	0	0	0	0	0	0	0	0	0	0	0	0	0	0	0	0	0	0	0	11	****	0	0
19	0	0	0	1	0	0	2	1	0	25	40	24	28	30	29	2	32	54	52	48	19	46	****	19	20
20	39	9	4	1	0	2	9	35	37	39	35	29	10	8	0	13	14	23	9	5	2	5	****	4	14
21	0	0	0	0	0	0	0	0	0	0	0	0	0	0	0	0	0	0	0	1	6	10	****	22	2
22	1	0	0	0	0	0	0	0	0	0	2	1	0	4	1	3	2	2	7	5	3	5	****	12	2
23	14	13	20	23	18	19	17	14	13	13	8	M	18	12	4	12	26	27	31	29	25	22	****	19	18
24	15	10	8	5	1	3	3	2	1	1	0	5	6	4	11	16	13	18	23	33	38	48	****	49	14
25	38	44	36	25	20	22	22	21	24	15	21	32	39	56	54	54	57	63	50	25	12	1	****	18	33
26	17	4	1	0	0	0	0	0	5	11	7	0	0	0	0	0	0	0	0	1	0	0	****	3	2
27	2	0	0	0	0	0	0	0	0	0	2	23	14	2	8	0	13	21	17	43	36	****	44	10	
28	38	23	30	16	12	9	15	24	24	17	21	19	18	3	15	13	21	30	78	86	47	53	****	57	29
29	75	48	65	74	80	92	17	0	0	0	0	0	0	0	0	0	0	0	0	0	0	0	****	0	20
30	0	0	0	0	0	0	0	0	0	0	0	0	0	7	32	20	23	20	0	5	70	44	****	38	11
31	52	45	47	26	8	15	37	26	25	3	1	1	2	0	0	0	0	0	6	17	49	18	****	18	17

MONTHLY STATISTICS:

GEOM	ARITH	<-----PERCENTILE----->							<-----RANGE----->			STD GEOM	PERCENT	NO. OF TIMES ABOVE OBJECTIVE	
MEAN	MEDIAN	MEAN	50	90	95	98	99	1-HR	24-HR	DEVIATION	VALID DATA	1-HR	24-HR		
8	6	13	6	38	50	66	75	0	- 92	6	96	0	0		

- NOTES:
1. FLAGS FOR INVALID DATA :
 - **** : DAILY ZERO/SPAN CHECK
 - D : DYNAMIC CALIBRATION
 - T : TELEMETRY/DATALOGGR/ANALYZER FAULT
 - M : MAINTENANCE OR MACHINE SHUTDOWN
 - P : POWER FAILURE
 2. BRACKETED READINGS EXCEED 1-HR OBJECTIVE 300 OR 24-HR OBJECTIVE 150

THE HONGKONG ELECTRIC COMPANY, LTD.
AIR QUALITY DATA MONTHLY TIME SERIES REPORT

STATION : CHEUNG CHAU
POLLUTANT : SULPHUR DIOXIDE

MONTH: FEBRUARY

YEAR : 2010
UNIT : MICROGRAMS/CUBIC METER

DAY	1	2	3	4	5	6	7	8	9	10	11	12	13	14	15	16	17	18	19	20	21	22	23	24	MEAN					
1	12	11	10	8	5	4	8	14	23	42	31	12	7	12	17	34	19	22	14	14	20	9	****	5	15					
2	4	4	3	3	4	8	11	9	6	6	8	5	3	4	5	3	3	4	3	3	2	4	****	6	5					
3	5	7	7	8	10	7	8	8	8	10	10	9	7	6	3	3	6	4	3	3	3	4	****	7	6					
4	3	4	3	2	3	4	7	10	20	9	6	5	8	5	5	10	7	3	3	4	1	3	****	3	6					
5	2	3	3	3	3	2	2	2	2	1	1	2	2	1	1	1	1	1	1	1	1	1	****	10	2					
6	13	7	11	13	15	22	14	9	6	4	3	6	6	6	2	8	9	9	1	7	7	1	<-----	8						
7	Failure of SO2 analyzer																													
8																														
9	----->															7	8	8	7	9	10	9	8	****	2					
10	3	4	4	5	4	5	7	13	8	5	4	2	2	2	1	5	5	4	4	3	3	2	****	3	4					
11	3	5	4	3	4	5	6	7	12	9	8	8	5	<-----	M	----->	1	2	2	3	2	****	4	5						
12	4	8	13	24	16	7	3	3	3	4	3	3	3	3	3	2	2	2	2	2	1	1	****	1	5					
13	1	0	0	0	2	4	4	6	7	6	6	7	7	5	5	3	3	3	2	2	1	3	****	2	3					
14	1	3	3	2	1	1	1	2	3	8	11	9	12	9	8	6	5	6	5	5	4	3	****	7	5					
15	8	5	6	3	2	2	2	2	3	3	4	3	3	4	3	3	2	2	2	2	2	****	3	3						
16	2	2	1	1	1	1	2	2	3	3	3	3	4	4	3	4	3	3	3	2	1	1	****	1	2					
17	1	1	0	1	1	1	0	1	2	2	3	2	2	2	2	3	3	4	4	5	4	5	****	5	2					
18	4	4	4	4	4	4	4	6	6	7	6	5	5	5	5	4	3	3	3	7	4	4	****	2	4					
19	1	1	2	1	2	1	1	2	3	3	3	5	6	14	25	41	22	15	13	10	11	13	****	18	9					
20	17	17	17	18	17	21	20	22	29	24	25	27	27	34	47	15	14	12	20	18	21	27	****	12	22					
21	12	17	29	10	8	9	10	12	12	13	13	15	16	11	14	8	4	7	4	3	4	6	****	7	11					
22	5	5	5	4	3	2	3	4	11	18	26	29	24	16	13	11	7	9	7	9	11	13	****	11	11					
23	10	13	13	11	13	19	22	32	50	35	30	40	17	29	45	14	14	9	6	6	5	5	****	13	20					
24	7	8	7	13	18	21	25	20	19	10	9	8	10	5	5	4	4	3	3	3	2	2	****	2	9					
25	1	1	2	2	2	1	1	1	3	5	7	3	2	5	4	4	2	5	7	4	4	5	****	3	3					
26	2	2	2	1	1	2	2	1	1	1	1	1	1	3	3	4	8	9	8	10	5	6	****	5	3					
27	3	3	3	6	6	12	18	13	16	15	6	5	5	3	3	7	12	16	11	16	12	10	****	12	9					
28	14	14	12	16	11	8	7	9	17	24	34	21	20	21	18	9	13	5	12	17	10	5	****	4	14					

MONTHLY STATISTICS:

GEOM	ARITH	<-----PERCENTILE----->					<-----RANGE----->			STD GEOM	PERCENT	NO. OF TIMES ABOVE OBJECTIVE	
MEAN	MEDIAN	MEAN	50	90	95	98	99	1-HR	24-HR	DEVIATION	VALID DATA	1-HR	24-HR
5	5	8	5	17	23	31	38	0	- 50	3	86	0	0

- NOTES:
1. FLAGS FOR INVALID DATA :
 - **** : DAILY ZERO/SPAN CHECK
 - D : DYNAMIC CALIBRATION
 - T : TELEMETRY/DATALOGGR/ANALYZER FAULT
 - M : MAINTENANCE OR MACHINE SHUTDOWN
 - P : POWER FAILURE
 2. BRACKETED READINGS EXCEED 1-HR OBJECTIVE 800 OR 24-HR OBJECTIVE 350

THE HONGKONG ELECTRIC COMPANY, LTD.
AIR QUALITY DATA MONTHLY TIME SERIES REPORT

STATION : CHEUNG CHAU
POLLUTANT : NITROGEN DIOXIDE

MONTH: FEBRUARY

YEAR : 2010
UNIT : MICROGRAMS/CUBIC METER

DAY	1	2	3	4	5	6	7	8	9	10	11	12	13	14	15	16	17	18	19	20	21	22	23	24	MEAN
1	11	3	7	8	0	0	15	20	16	21	1	0	0	0	0	1	1	0	4	28	15	0	****	7	7
2	0	0	0	0	5	0	9	1	0	0	4	0	0	0	0	0	0	0	3	1	0	0	****	0	1
3	0	8	6	9	14	2	6	7	1	4	2	1	0	0	0	2	2	2	0	0	1	0	****	0	3
4	0	0	0	0	0	0	0	0	0	1	8	1	1	0	2	36	24	5	8	20	0	0	****	0	5
5	0	0	0	0	0	0	0	0	0	0	0	2	1	2	0	0	0	0	0	0	0	0	****	0	0
6	0	0	2	0	0	2	0	0	0	0	0	2	4	2	2	0	2	7	6	1	2	****	4	2	
7	0	0	1	2	0	0	2	1	12	5	7	26	25	25	33	20	0	1	29	36	22	44	****	0	13
8	4	21	31	17	3	4	20	24	38	22	9	17	7	9	10	23	33	40	45	23	39	33	****	5	21
9	9	7	12	3	8	3	6	5	6	9	12	11	4	3	16	18	31	14	5	0	6	1	****	0	8
10	1	0	1	2	0	0	1	0	0	0	0	1	0	0	0	0	0	0	0	3	0	0	****	0	0
11	0	0	0	0	0	0	0	0	6	1	0	0	0	<----- M ----->				0	0	0	0	0	****	0	0
12	1	13	13	12	9	2	0	0	2	5	4	5	8	6	2	2	2	2	3	4	3	4	****	3	5
13	2	0	0	0	0	1	1	4	7	4	4	8	4	0	2	2	5	4	5	1	1	5	****	0	3
14	0	1	5	1	0	0	0	0	8	17	16	17	22	16	9	14	16	18	19	17	11	9	****	16	10
15	15	10	4	0	0	0	0	0	0	1	2	0	0	1	1	4	6	7	10	9	6	1	****	0	3
16	0	0	0	0	0	0	0	0	1	1	2	3	7	8	9	11	12	16	15	16	15	14	****	9	6
17	5	1	0	0	0	0	0	3	4	6	8	10	9	7	6	4	5	5	9	12	6	6	****	4	5
18	1	0	0	0	0	0	0	2	6	10	8	6	6	9	12	11	17	23	23	28	17	10	****	10	9
19	2	1	1	0	0	0	3	10	11	15	16	24	23	29	33	33	36	33	30	33	38	38	****	42	20
20	35	30	32	23	17	32	32	35	37	39	36	32	35	39	36	11	8	31	59	56	61	67	****	57	37
21	44	47	62	10	13	22	31	23	19	25	16	17	15	13	35	31	6	69	13	4	9	12	****	7	24
22	3	0	11	0	0	4	15	11	41	49	56	55	57	49	46	42	14	23	31	38	60	59	****	46	31
23	46	50	48	41	41	39	37	36	40	31	32	26	0	0	1	0	0	0	0	0	0	0	****	0	20
24	0	0	0	0	0	1	3	0	13	0	0	0	0	0	0	0	0	0	0	0	0	0	****	0	1
25	0	0	0	0	0	0	2	0	0	5	1	0	0	0	0	0	0	0	0	0	0	0	****	0	0
26	0	0	0	0	0	0	0	0	0	0	0	0	0	0	0	0	0	0	0	0	0	0	****	0	0
27	0	0	0	0	0	0	0	0	1	0	0	0	0	0	0	0	0	0	0	0	0	0	****	0	0
28	0	0	0	0	0	0	0	0	0	0	0	0	0	0	0	0	0	0	0	1	0	0	****	0	0

MONTHLY STATISTICS:

GEOM	ARITH	<-----PERCENTILE----->					<-----RANGE----->			STD GEOM	PERCENT	NO. OF TIMES ABOVE OBJECTIVE	
MEAN	MEDIAN	MEAN	50	90	95	98	99	1-HR	24-HR	DEVIATION	VALID DATA	1-HR	24-HR
4	1	8	1	31	39	50	58	0	- 69	8	95	0	0

- NOTES:
1. FLAGS FOR INVALID DATA :
 - **** : DAILY ZERO/SPAN CHECK
 - D : DYNAMIC CALIBRATION
 - T : TELEMETRY/DATALOGGR/ANALYZER FAULT
 - M : MAINTENANCE OR MACHINE SHUTDOWN
 - P : POWER FAILURE
 2. BRACKETED READINGS EXCEED 1-HR OBJECTIVE 300 OR 24-HR OBJECTIVE 150

THE HONGKONG ELECTRIC COMPANY, LTD.
AIR QUALITY DATA MONTHLY TIME SERIES REPORT

STATION : CHEUNG CHAU
POLLUTANT : SULPHUR DIOXIDE

MONTH: MARCH

YEAR : 2010
UNIT : MICROGRAMS/CUBIC METER

DAY	1	2	3	4	5	6	7	8	9	10	11	12	13	14	15	16	17	18	19	20	21	22	23	24	MEAN
1	2	3	2	2	3	2	4	3	8	5	8	3	5	3	2	3	5	3	4	4	7	10	****	8	4
2	12	8	15	20	20	17	16	16	15	9	5	7	16	20	19	15	5	4	3	3	2	2	****	6	11
3	7	5	7	7	8	11	9	11	16	23	31	29	21	17	17	15	19	19	12	14	18	22	****	19	16
4	20	23	27	15	13	16	15	18	23	26	13	10	5	3	5	3	3	2	2	5	8	3	****	3	11
5	3	4	3	2	1	2	4	7	8	10	9	5	6	4	3	5	5	3	5	7	4	4	****	3	5
6	2	2	3	5	8	11	9	11	18	12	9	5	5	5	2	2	3	2	4	3	4	5	****	8	6
7	8	14	11	12	25	29	12	8	6	5	5	3	4	3	2	2	5	6	7	10	7	5	****	5	9
8	7	9	9	7	4	4	5	11	17	31	15	11	10	8	6	5	7	16	18	15	12	10	****	17	11
9	15	5	3	1	1	1	1	2	2	1	2	3	4	8	8	7	6	6	6	7	5	4	****	9	5
10	12	12	16	21	25	28	28	27	26	22	19	17	17	20	18	18	16	16	14	13	14	13	****	19	19
11	16	18	19	23	19	19	18	12	14	14	12	16	14	13	13	14	10	12	10	10	11	9	****	14	14
12	10	7	11	8	9	25	31	11	17	26	27	16	18	14	20	18	18	22	19	19	22	23	****	27	18
13	13	20	18	9	13	10	19	25	22	19	25	34	25	12	19	23	11	9	7	6	8	7	****	5	16
14	4	5	5	4	4	5	5	7	7	11	12	10	5	3	3	2	2	2	2	2	1	2	****	2	5
15	1	2	8	11	9	7	4	5	18	22	21	17	11	8	10	10	13	20	21	13	8	5	****	7	11
16	5	5	9	22	93	78	62	60	23	10	10	16	23	7	10	5	12	7	8	7	5	6	****	5	21
17	4	4	18	17	31	30	13	18	14	16	17	12	14	17	18	17	11	11	11	20	25	33	****	24	17
18	20	17	23	50	43	39	90	79	84	61	51	60	64	45	28	29	39	67	26	26	14	10	****	10	42
19	9	8	8	8	9	9	9	15	22	18	13	11	12	11	19	24	30	18	19	12	23	29	****	31	16
20	18	16	15	17	16	13	10	14	19	20	20	12	6	4	5	7	8	6	6	4	5	9	****	10	11
21	6	5	6	6	6	8	9	13	33	40	44	38	40	33	35	35	22	6	6	6	5	5	****	2	18
22	5	4	3	3	3	6	5	3	8	29	12	7	30	7	7	6	7	4	3	4	5	5	****	8	8
23	7	4	4	5	6	4	2	5	10	7	4	4	3	4	3	4	2	3	2	2	3	5	****	16	5
24	9	8	16	12	9	6	6	7	10	21	21	34	49	45	38	39	37	15	12	9	8	11	****	15	19
25	15	27	14	3	3	2	3	4	10	13	14	11	8	8	6	5	5	6	8	7	5	5	****	7	8
26	7	7	7	9	9	11	10	13	12	18	15	12	9	10	8	8	9	11	12	17	12	13	****	9	11
27	6	7	8	7	7	8	10	17	29	15	23	32	26	27	14	14	17	17	18	14	16	14	****	14	16
28	13	17	25	26	30	34	24	24	34	42	39	38	28	30	21	12	12	11	9	13	15	8	****	9	22
29	9	8	6	8	9	9	12	15	37	30	19	12	12	11	10	18	30	22	11	8	9	18	****	31	15
30	16	10	7	7	13	8	8	13	36	23	32	39	45	43	31	27	25	18	9	11	7	10	****	5	19
31	5	5	5	3	3	5	4	4	4	8	11	9	9	10	7	6	5	4	3	5	6	7	****	3	6

MONTHLY STATISTICS:

GEOM	ARITH	<-----PERCENTILE----->					<-----RANGE----->		STD GEOM	PERCENT	NO. OF TIMES	
MEAN	MEDIAN	50	90	95	98	99	1-HR	24-HR	DEVIATION	VALID DATA	1-HR	24-HR
10	10	10	27	35	45	62	1	- 93	2	96	0	0

- NOTES:
1. FLAGS FOR INVALID DATA :
 - **** : DAILY ZERO/SPAN CHECK
 - D : DYNAMIC CALIBRATION
 - T : TELEMETRY/DATALOGGR/ANALYZER FAULT
 - M : MAINTENANCE OR MACHINE SHUTDOWN
 - P : POWER FAILURE
 2. BRACKETED READINGS EXCEED 1-HR OBJECTIVE 800 OR 24-HR OBJECTIVE 350

THE HONGKONG ELECTRIC COMPANY, LTD.
AIR QUALITY DATA MONTHLY TIME SERIES REPORT

STATION : CHEUNG CHAU
POLLUTANT : NITROGEN DIOXIDE

MONTH: MARCH

YEAR : 2010
UNIT : MICROGRAMS/CUBIC METER

DAY	1	2	3	4	5	6	7	8	9	10	11	12	13	14	15	16	17	18	19	20	21	22	23	24	MEAN	
1	0	0	0	0	0	0	0	0	1	1	2	0	0	0	0	0	0	0	0	0	0	0	****	2	0	
2	8	2	0	3	3	3	1	0	0	0	0	0	0	0	1	1	0	0	0	0	0	0	****	5	1	
3	0	0	0	0	0	0	0	1	0	2	1	0	0	0	0	0	0	3	0	0	3	3	****	8	1	
4	10	9	13	7	1	3	0	1	0	3	0	0	0	0	0	0	0	0	0	0	0	0	****	0	2	
5	0	0	0	0	0	0	0	0	0	0	0	0	0	0	0	0	0	0	0	0	0	1	****	0	0	
6	0	1	6	0	2	5	4	1	0	0	0	0	0	0	0	0	0	0	0	0	0	0	****	0	1	
7	0	1	3	3	3	2	1	1	1	1	2	3	5	7	7	7	11	11	14	14	14	14	11	****	13	6
8	12	13	11	5	1	3	5	6	9	12	9	10	9	18	30	33	36	31	27	22	19	17	****	14	15	
9	11	9	7	4	4	3	2	5	7	11	8	14	8	6	7	5	4	9	12	14	9	1	****	1	7	
10	0	0	0	0	0	0	1	5	9	7	9	12	16	22	13	7	5	10	9	10	16	24	****	78	11	
11	48	31	41	56	44	43	30	2	10	7	0	10	18	5	0	0	0	0	3	3	5	4	****	38	17	
12	45	15	34	18	11	42	55	14	33	67	82	46	71	76	79	82	81	84	84	84	76	76	****	67	58	
13	58	63	52	23	35	36	46	46	37	34	47	52	46	28	50	51	21	27	2	0	0	0	****	0	33	
14	0	0	0	0	0	3	2	5	5	26	23	19	7	0	0	0	0	0	0	0	0	0	****	0	4	
15	0	0	9	12	10	11	0	0	0	1	1	0	4	1	0	0	0	9	24	17	9	11	****	12	6	
16	7	9	7	8	11	7	4	2	0	1	5	15	15	0	0	0	0	0	2	0	0	0	****	0	4	
17	0	0	1	1	4	6	0	0	0	0	0	0	0	5	7	1	0	1	1	6	8	20	****	13	3	
18	8	5	20	67	55	47	62	54	54	46	47	51	39	23	4	5	22	50	5	5	4	3	****	52	32	
19	25	9	1	0	0	0	6	25	10	4	0	0	0	0	1	6	8	2	11	2	7	19	****	29	7	
20	9	3	1	0	1	0	6	11	25	51	67	26	5	0	0	0	7	3	43	3	15	40	****	31	15	
21	23	6	12	16	16	34	33	34	42	40	40	24	26	13	15	8	14	0	0	0	0	0	****	0	17	
22	0	0	0	0	0	0	0	0	0	2	2	0	9	0	0	0	0	0	0	0	0	0	****	22	2	
23	56	7	4	8	0	0	0	16	23	7	0	0	0	0	0	0	0	0	0	0	0	0	****	22	6	
24	15	12	11	8	4	2	1	1	0	0	0	0	0	0	0	0	0	0	0	0	0	0	****	4	3	
25	0	0	0	0	0	0	0	0	0	0	0	0	0	1	0	0	0	2	8	8	0	2	****	1	1	
26	0	0	0	0	0	4	6	12	18	20	11	5	1	0	0	0	0	0	2	9	4	3	****	4	4	
27	2	2	3	0	0	0	1	22	72	13	20	69	66	54	19	4	20	18	17	18	21	14	****	68	23	
28	58	83	94	84	70	48	23	8	36	38	32	33	9	1	1	0	0	0	0	0	0	0	****	0	27	
29	0	0	0	0	0	0	0	0	4	3	1	3	3	0	0	9	8	2	0	0	0	2	****	11	2	
30	1	0	0	0	0	0	0	0	2	4	10	9	12	7	7	11	10	2	0	0	0	4	****	0	3	
31	0	0	0	0	0	0	0	0	0	1	4	0	0	0	0	0	0	0	0	0	0	0	****	0	0	

MONTHLY STATISTICS:

GEOM	ARITH	<-----PERCENTILE----->					<-----RANGE----->			STD GEOM	PERCENT	NO. OF TIMES	
MEAN	MEDIAN	50	90	95	98	99	1-HR		24-HR	DEVIATION	VALID DATA	1-HR	24-HR
6	1	1	34	52	72	82	0	-	94	6	96	0	0

- NOTES:
1. FLAGS FOR INVALID DATA :
 - **** : DAILY ZERO/SPAN CHECK
 - D : DYNAMIC CALIBRATION
 - T : TELEMETRY/DATALOGGR/ANALYZER FAULT
 - M : MAINTENANCE OR MACHINE SHUTDOWN
 - P : POWER FAILURE
 2. BRACKETED READINGS EXCEED 1-HR OBJECTIVE 300 OR 24-HR OBJECTIVE 150

Appendix C Summary Results on Water Quality Monitoring

LAMMA POWER STATION FGD WASTEWATER TREATMENT PLANT EFFLUENT DISCHARGE TO ASH LAGOON SUSPENDED SOLIDS AND PH

Period : January - March 2010

Week Ending	No. of Samples	Suspended Solids, mg/L			pH		
		Maximum	Minimum	Average	Maximum	Minimum	Average
02/01/10	4*	18	12	16	8.4	8.0	8.2
09/01/10	5*	20	14	16	8.2	8.0	8.1
16/01/10	4*	18	14	16	8.0	7.9	8.0
23/01/10	5*	16	10	14	8.1	7.9	8.0
30/01/10	7	19	13	16	8.1	8.0	8.0
06/02/10	6*	19	14	16	8.2	8.0	8.1
13/02/10	6*	21	12	17	8.2	8.0	8.1
20/02/10	4*	19	13	16	8.1	8.0	8.0
27/02/10	5*	19	14	17	8.2	8.0	8.1
06/03/10	5*	18	16	17	8.2	8.0	8.0
13/03/10	6*	19	15	17	8.2	8.0	8.1
20/03/10	2*	14	12	13	8.0	8.0	8.0
27/03/10	4*	16	13	14	8.1	8.0	8.1

Remark :

* - No sampling for the remaining day(s) of the week / no sampling due to no discharge

**LAMMA POWER STATION
FGD WASTEWATER TREATMENT PLANT
EFFLUENT DISCHARGE TO ASH LAGOON
TRACE METAL, TOTAL PHOSPHORUS
AND TOTAL NITROGEN ANALYSIS**

Period : January - March 2010

Sampling date		6/1/2010	2/2/2010	4/3/2010
Barium,	ug/L	<150	<150	<150
Mercury,	ug/L	0.5	<0.5	<0.5
Cadmium,	ug/L	<1	<1	3
Iron,	ug/L	<400	<400	<400
Total Phosphorous,	mg/L	<0.8	<0.8	<0.8
Total Nitrogen,	mg/L	16	26	79
Cyanide,	mg/L	<0.01	0.02	<0.01

Remark:

According to the WPCO Ash Lagoon Discharge Licence, contents at exact levels of trace metals below 1/10 th of the WPCO Licence permitted limits will not be reported. When the concentration of a metal exceeds 1/10 th of the limit, the exact value of the metal concentration will be reported.

Appendix D Summary of EMIS

EM&A Log Ref.	Mitigation Measures	Implementation Status
	GENERAL	
A1	No other process, except the Wet Limestone-Gypsum process used in the FGD plants of the coal-fired Units L6, L7 and L8 within the Lamma Power Station, shall be used in the FGD plants for the coal-fired Units L4 and L5 unless otherwise agreed by EPD.	Complied
	WATER QUALITY	
B1	All wastewater arising from the operation of the FGD plants for the coal-fired Units L4 and L5 shall be collected and directed to the existing wastewater treatment plant within the Lamma Power Station for treatment.	Complied
B2	The operational plant effluent from the FGD plants should be reused as much as possible in order to minimise discharge to the WWTP.	Complied
B3	Maintenance of the WWTP should be performed regularly to ensure the effluent from the WWTP would not exceed the current requirements stipulated in the WPCO licence for Ash Lagoon.	Complied
	WASTE	
C1	No gypsum or sludge arising from the operation of the FGD plants for the coal-fired Units L4 and L5 shall be disposed of anywhere. All gypsum and sludge shall be collected and reused.	Complied
	NOISE	
D1	Equipments including the Absorber Recirculation Pump, Oxidation Air Blower, Booster Fan and Booster Fan Motor of the FGD plants shall be acoustically insulated and the Gas-Gas Heater (untreated side) of the FGD plants shall be provided with reinforced lagging to reduce the noise impact.	Complied