

香港電燈有限公司
The Hongkong Electric Co., Ltd.



**Lamma Power Station
Units L2, L4 & L5 Flue Gas Desulphurization
Plants Retrofit
Operational Phase
Quarterly Environmental Monitoring & Audit Report
April – June 2014**

香港電燈有限公司
The Hongkong Electric Co., Ltd.



ENVIRONMENTAL IMPACT ASSESSMENT (EIA) ORDINANCE, CAP. 499

ENVIRONMENTAL PERMITS NO. EP-248/2006 & EP-287/2007

**LAMMA POWER STATION
UNITS L2, L4 & L5 FLUE GAS DESULPHURIZATION PLANTS RETROFIT**

**ENVIRONMENTAL MONITORING & AUDIT PROGRAMME
AT OPERATIONAL PHASE**


Report Title	Quarterly EM&A Report (April to June 2014)
Date	19 September 2014
Certified by	 (Mr. IP Tat-Yan, Environmental Team Leader)

TABLE OF CONTENT

EXECUTIVE SUMMARY

1.	INTRODUCTION.....	1
1.1	Background	1
1.2	Project Organisation	2
1.3	Plant Availability during the Reporting Period	2
1.4	Malfunction/Outage Records of Pollution Control Equipment	2
1.5	Summary of EM&A Requirements	3
2.	AIR QUALITY.....	12
2.1	Monitoring Requirements	12
2.2	Summary of Results and Observations	12
3.	WATER QUALITY.....	14
3.1	Monitoring Requirements	14
3.2	Summary of Results and Observations	14
4.	ENVIRONMENTAL AUDIT.....	16
4.1	Review of Environmental Monitoring Procedures	16
4.2	Assessment of Environmental Monitoring Results	16
4.3	Status of Environmental Licensing and Permitting	18
4.4	Implementation Status of Environmental Mitigation Measures	18
4.5	Implementation Status of Event/Action Plan	19
4.6	Implementation Status of Environmental Complaint Handling Procedures	19
5.	FUTURE KEY ISSUES.....	20
5.1	Outage Plan for the coming 3 months	20
5.2	Key issues for the coming 3 months	20
6.	CONCLUSION.....	21

LIST OF TABLES

Table 2.1	Air Quality Monitoring Parameters and Frequency
Table 3.1	Water Quality Monitoring Parameters and Frequencies
Table 4.1	Summary of Action/Limit Level Exceedances on Monitoring Parameters
Table 4.2	Amount of Gypsum and Sludge Collected for Reuse by Contractor
Table 4.3	Summary of Environmental Licensing and Permit Status
Table 4.4	Environmental Complaints Received
Table 4.5	Outstanding Environmental Complaints Carried Over

LIST OF FIGURES

- Figure 1.1a Location of New Facilities for L4 & L5 FGD Plant
- Figure 1.1b Location of New Facilities for L2 FGD Plant
- Figure 1.2a General Arrangement of L4 & L5 FGD Plant
- Figure 1.2b General Arrangement of L2 FGD Plant
- Figure 1.3 Schematic Diagram of L4 & L5 FGD Plant
- Figure 1.4 Simplified Schematic Diagram of FGD Wastewater Treatment Plant
- Figure 1.5 Organization Chart at Operational Phase

APPENDIX

- Appendix A Event/Action Plans in Response to Exceedance of AL Levels
- Appendix B Air Quality Monitoring Results
- Appendix C Summary Results on Water Quality Monitoring
- Appendix D Summary of EMIS

EXECUTIVE SUMMARY

This is the quarterly Environmental Monitoring and Audit (EM&A) report for the Projects “Lamma Power Station Units L4 & L5 Flue Gas Desulphurization Plant Retrofit” and “Lamma Power Station Unit L2 Flue Gas Desulphurization Plant Retrofit” prepared by the Environmental Team (ET). This report presents the results of impact monitoring on air and water quality and environmental audit for the operation of the said projects in the period from April to June 2014.

Environmental monitoring for air quality and water quality were carried out for the purpose of this EM&A program as well as for fulfilling the requirements stipulated in the relevant licences. The results were checked against the established Action/Limit (AL) levels. The implementation status of the environmental mitigation measures, Event/Action Plan and environmental complaint handling procedures were also checked.

Plant Availability

Units L2, L4 and L5 were out of service during the following period:

Unit	Period	Remark
L2	01/04/2014 00:00 to 03/04/2014 15:47	Unit Overhaul
L2	10/04/2014 00:04 to 12/04/2014 15:45	Defect Rectification
L2	16/04/2014 00:50 to 16/04/2014 19:48	Defect Rectification
L2	27/05/2014 10:14 to 31/05/2014 24:00	Defect Rectification
L2	01/06/2014 00:00 to 03/06/2014 17:58	Barring Gear Inspection
L2	19/06/2014 00:44 to 30/06/2014 24:00	No.4~6 T/A Bearing Inspection & Defect Rectification
L4	08/04/2014 21:44 to 09/04/2014 03:25	Installation of Test Venturi for Turbine Heat Rate Test
L5	01/04/2014 00:00 to 23/05/2014 20:15	Unit Overhaul

Malfunction/Outage Records of Pollution Control Equipment

Major outages of the Pollution Control Equipment during the reporting period are listed below:

Equipment	Period	Cause	Actions Taken
L4 FGD	21/05/2014 07:32 to 14:10	FGD plant was bypassed due to the operation of BUF stalling protection alarm	EPD was informed by letter dated 26/05/2014

Equipment	Period	Cause	Actions Taken
L5 FGD	25/05/2014 17:30 to 22:21	FGD plant was bypassed due to BUF control oil temperature high	EPD was informed on 26/05/2014
L5 FGD	25/06/2014 05:00 to 17:54	Defect rectification	EPD was informed by letter dated 30/06/2014

For other minor outages, please refer to section 1.4 of the report.

Environmental Monitoring Works

Environmental monitoring works were performed during the operation of Units L2, L4 and L5 FGD Plants in the reporting period.

Air Quality

No exceedance of Action and Limit levels for air quality were recorded in the reporting period.

Water Quality

No exceedance of Action and Limit levels for water quality were recorded in the reporting period.

Environmental Licensing and Permitting

Description	Permit / Licence No.	Valid Period		Issued To	Date of Issuance
		From	To		
Environmental Permit for L4/5 FGD plants retrofit project	EP-248/2006	25/04/2006	-	HK Electric	25/04/2006
Environmental Permit for Unit L2 FGD plant retrofit project	EP-287/2007	02/10/2007	-	HK Electric	02/10/2007
Specified Processes Licence issued under APCO	L-7-002(9)	01/01/2013	31/12/2014	HK Electric	28/12/2012
WPCO discharge licence for Ash Lagoon	WT00011131-2011	15/12/2011	31/12/2016	HK Electric	15/12/2011

Implementation Status of Environmental Mitigation Measures

Environmental mitigation measures were implemented in the reporting period.

Environmental Complaints

No environmental complaint against the operation of Lamma Power Station was received during the reporting period.

Future key issues

Key issues to be considered in the coming months include:

Air Impact

- To continuously carry out the air quality monitoring for Units L2, L4 and L5.

Water Impact

- To continuously carry out the water quality monitoring for FGD WWT plant.

Concluding Remarks

The environmental performance of the projects was generally satisfactory.

1. INTRODUCTION

The Environmental Team (hereinafter called the “ET”) was formed within The Hongkong Electric Co. Ltd (HK Electric) to undertake Environmental Monitoring and Audit for the “Operation of Lamma Power Station Units L4 & L5 Flue Gas Desulfurization Plant Retrofit Project” under the requirements of Clause 2.18 of Environmental Permit (EP) No. EP-248/2006 and “Operation of Lamma Power Station Unit L2 Flue Gas Desulfurization Plant Retrofit Project” under the requirements of Clause 2.10 of Environmental Permit (EP) No. EP-287/2007.

This report summarizes the environmental monitoring and audit work for the said Projects for the period from October to December 2013.

1.1 Background

The Projects involves retrofitting the three existing coal-fired generating Units L2, L4 and L5 of Lamma Power Station with Flue Gas Desulphurisation (FGD) plants for reducing sulphur dioxide emissions in support of Government policy to improve the air quality of the Pearl River Delta.

The Projects include the installation and operation of FGD plants with flue gas desulphurization efficiency of 90% for the three coal-fired Units L2, L4 & L5 to reduce the overall SO₂ emissions from Lamma Power Station. The process adopted for the FGD plants is “Wet Limestone-Gypsum”, a technology which has already been used in, and proved effective and reliable for the existing coal-fired units L6, L7 & L8. The flue gas from the boiler is directed to the FGD absorber inside which removal of SO₂ is take place by reaction with limestone slurry. After passing through the absorber, the treated flue gas is heated up by a gas-gas heater to over 80°C at boiler rated capacity and directed back to the existing chimney for discharge to the atmosphere. Figure 1.1a, Figure 1.1b, Figure 1.2a, Figure 1.2b and Figure 1.3 show the location and schematic of the FGD plants.

Wastewater filtrated from the reacted limestone slurry, i.e. gypsum slurry, is produced and it is directed to the existing FGD wastewater treatment plant (WWTP). The FGD WWTP is designed to treat the effluent from FGD plants by alkalization, precipitation and neutralization processes. The schematic diagram of the FGD WWTP is illustrated in Figure 1.4.

The additional equipment for the FGD Plants retrofit projects for Units L2, L4 and L5 includes:

- Three sets of FGD absorbers and associated ductworks
- Three sets of booster fans
- Three sets of gas-gas heaters
- Two FGD Switchgear and Equipment Buildings
- Gypsum dewatering system comprising two sets of hydrocyclones and belt filters

1.2 Project Organisation

The management structure to oversee the Projects includes the following:

- Environmental Protection Department (The Authority);
- General Manager (Corporate Development) (The official contact person between HK Electric and EPD);
- Environmental Team Leader (ET Leader);
- Environmental Team (ET).

The organization chart for the Operation EM&A programme is shown in Figure 1.5.

1.3 Plant Availability during the Reporting Period

Units L2, L4 and L5 were out of service during the following period:

Unit	Period	Remark
L2	01/04/2014 00:00 to 03/04/2014 15:47	Unit Overhaul
L2	10/04/2014 00:04 to 12/04/2014 15:45	Defect Rectification
L2	16/04/2014 00:50 to 16/04/2014 19:48	Defect Rectification
L2	27/05/2014 10:14 to 31/05/2014 24:00	Defect Rectification
L2	01/06/2014 00:00 to 03/06/2014 17:58	Barring Gear Inspection
L2	19/06/2014 00:44 to 30/06/2014 24:00	No.4~6 T/A Bearing Inspection & Defect Rectification
L4	08/04/2014 21:44 to 09/04/2014 03:25	Installation of Test Venturi for Turbine Heat Rate Test
L5	01/04/2014 00:00 to 23/5/2014 20:15	Unit Overhaul

1.4 Malfunction/Outage Records of Pollution Control Equipment

Equipment	Period	Cause	Actions Taken
L2 FGD	23/05/2014 01:57 to 02:07	Routine damper exercise	EPD was informed on 28/05/2014

Equipment	Period	Cause	Actions Taken
L4 FGD	10/04/2014 09:00 to 10:09	FGD plant was bypassed due to the operation of BUF stalling protection alarm	EPD was informed by letter dated 14/04/2014
L4 FGD	26/04/2014 02:17 to 02:28	Routine damper exercise	EPD was informed on 29/04/2014
L4 FGD	03/05/2014 00:28 to 00:31	Routine damper exercise	EPD was informed on 07/05/2014
L4 FGD	07/05/2014 07:24 to 09:58	FGD plant was bypassed due to the operation of BUF stalling protection alarm	EPD was informed by letter dated 09/05/2014
L4 FGD	21/05/2014 07:32 to 14:10	FGD plant was bypassed due to the operation of BUF stalling protection alarm	EPD was informed by letter dated 26/05/2014
L4 FGD	31/05/2014 02:41 to 02:45	Routine damper exercise	EPD was informed on 05/06/2014
L4 FGD	07/06/2014 03:17 to 03:38	Routine damper exercise	EPD was informed on 10/06/2014
L4 FGD	14/06/2014 02:18 to 02:22	Routine damper exercise	EPD was informed on 18/06/2014
L4 FGD	21/06/2014 02:26 to 02:28	Routine damper exercise	EPD was informed on 24/06/2014
L4 FGD	28/06/2014 02:49 to 03:00	Routine damper exercise	EPD was informed on 30/06/2014
L5 FGD	25/05/2014 17:30 to 22:21	FGD plant was bypassed due to BUF control oil temperature high	EPD was informed on 26/05/2014
L5 FGD	07/06/2014 02:39 to 03:02	Routine damper exercise	EPD was informed on 10/06/2014
L5 FGD	14/06/2014 02:23 to 02:25	Routine damper exercise	EPD was informed on 18/06/2014
L5 FGD	21/06/2014 02:43 to 02:46	Routine damper exercise	EPD was informed on 24/06/2014
L5 FGD	25/06/2014 05:00 to 17:54	Defect rectification	EPD was informed by letter dated 30/06/2014

1.5 Summary of EM&A Requirements

Environmental Monitoring and Audit (EM&A) requirements have been discussed in the Environmental Impact Assessment (EIA) Report/ Project Profile for the Projects. The assessment results indicate that environmental monitoring works required for the EM&A programmes of these Projects are already in place or would be implemented under Lamma Power Station Extension Environmental Permit or environmental licenses for the operation of the existing Lamma Power Station. Such monitoring works are considered adequate for the Projects and no additional EM&A activities are required. Hence, environmental monitoring for air quality and water quality are carried out for the purpose of this EM&A program as well as for fulfilling the requirements stipulated in the relevant licences.

The EM&A monitoring work for air and water quality are described in Section 2 and Section 3 respectively.

The following environmental audits are summarized in Section 4 of the report:

- Environmental monitoring results;
- The status of environmental licensing and permits for the Projects;
- The implementation status of environmental protection and pollution control / mitigation measures.

The future key issues for the Projects will be reported in Section 5 of this report.

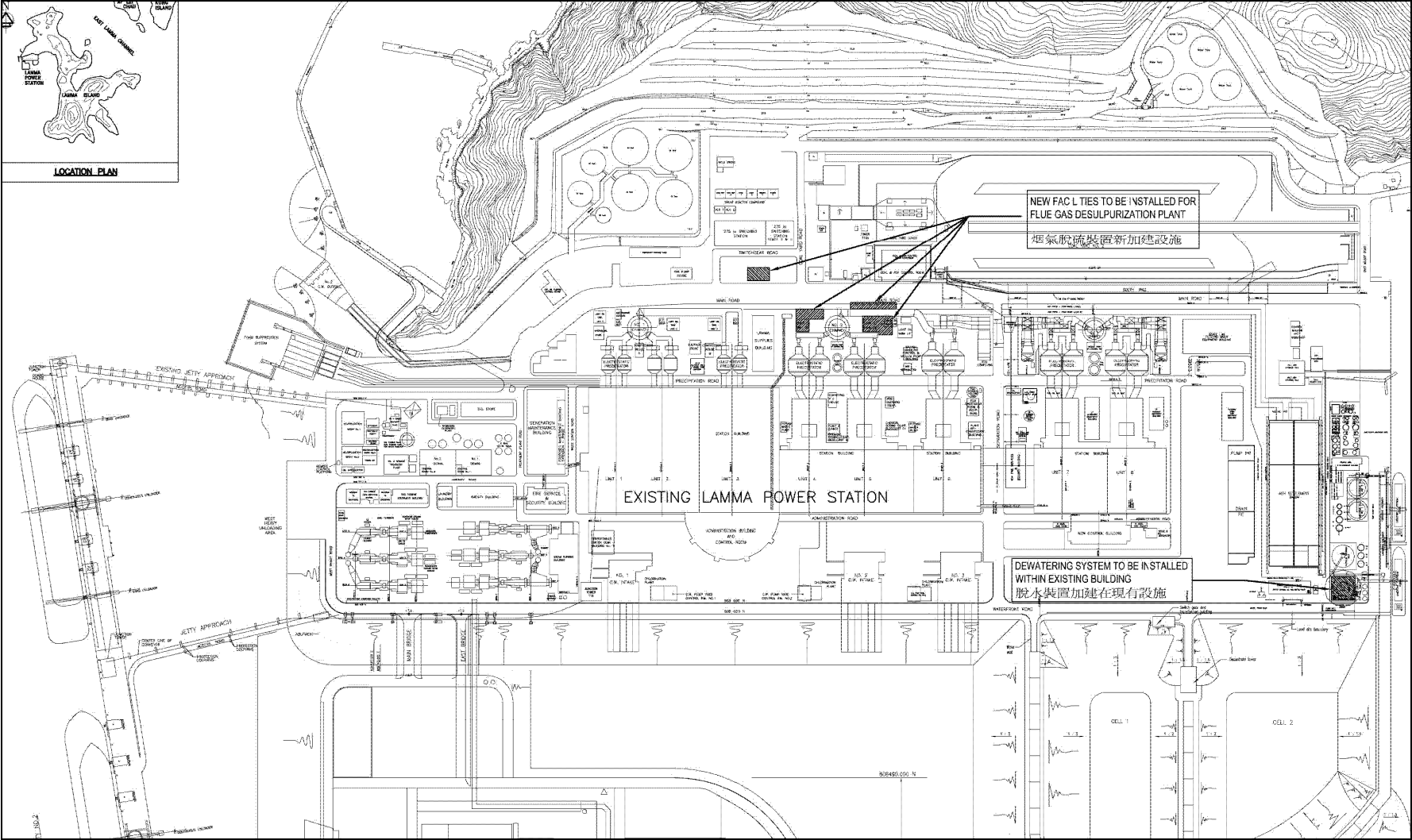


Figure 1.1a Location of New Facilities for L4 & L5 FGD Plants

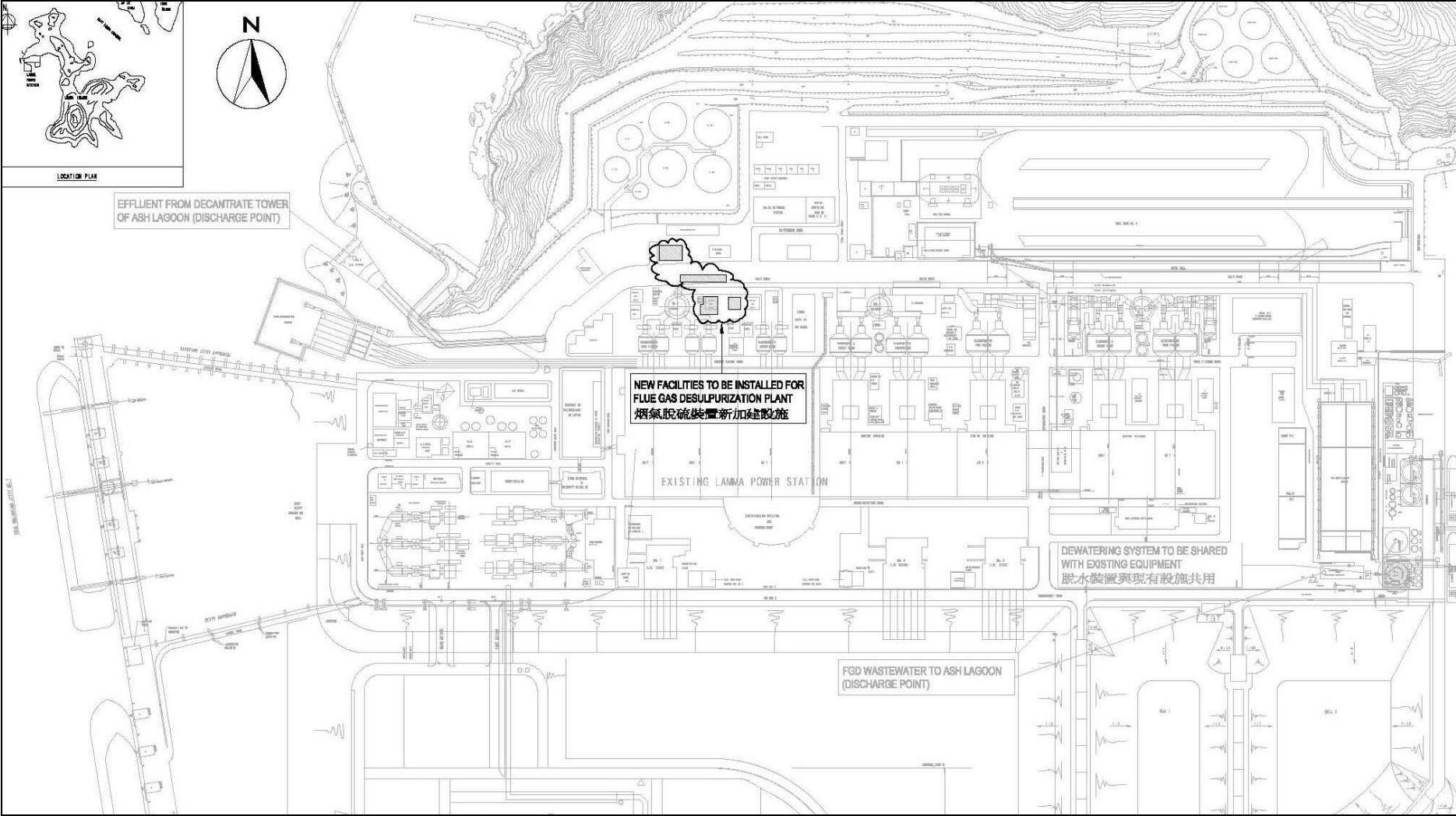


Figure 1.1b Location of New Facilities for L2 FGD Plant

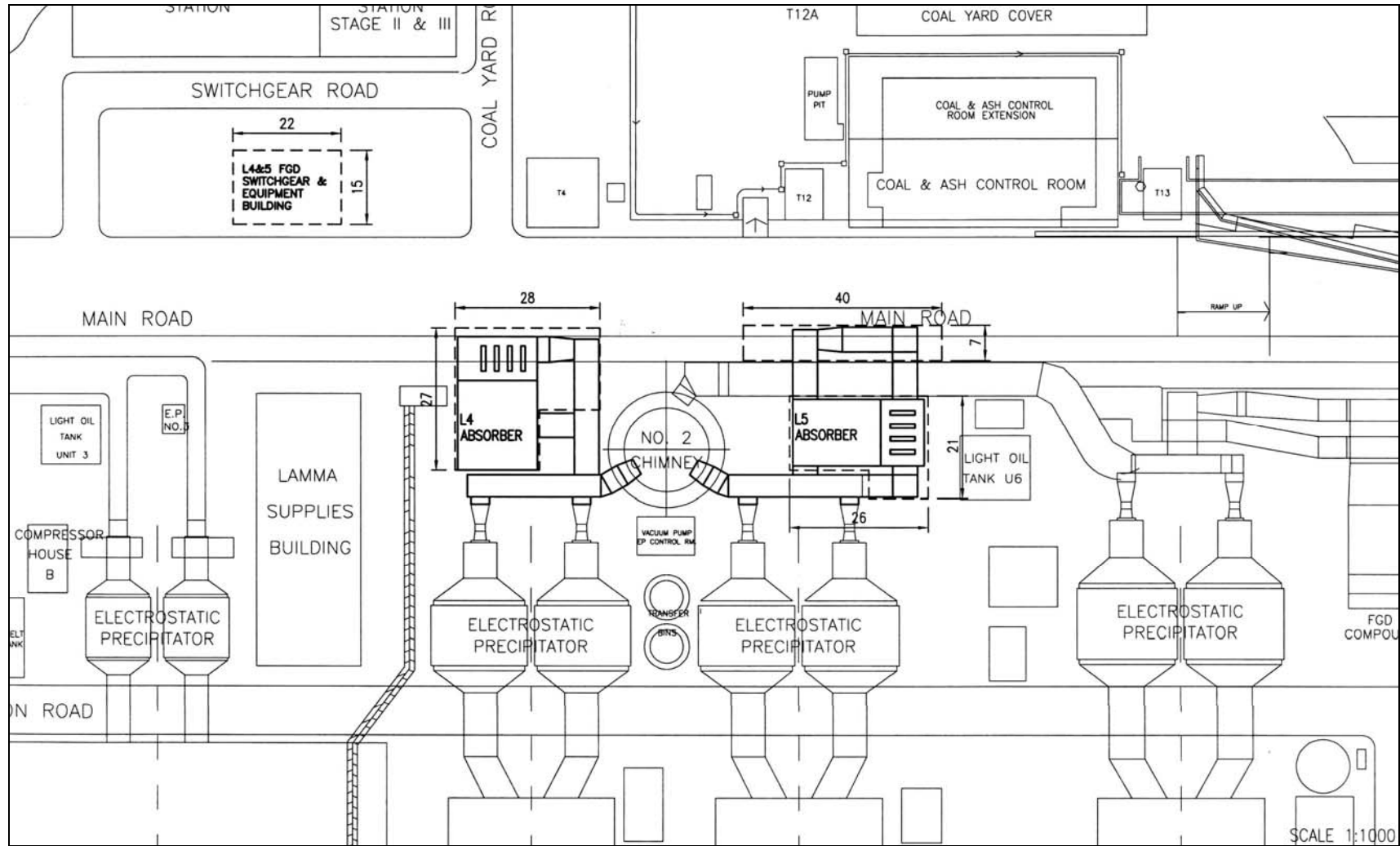


Figure 1.2a General Arrangement of L4 & L5 FGD Plants

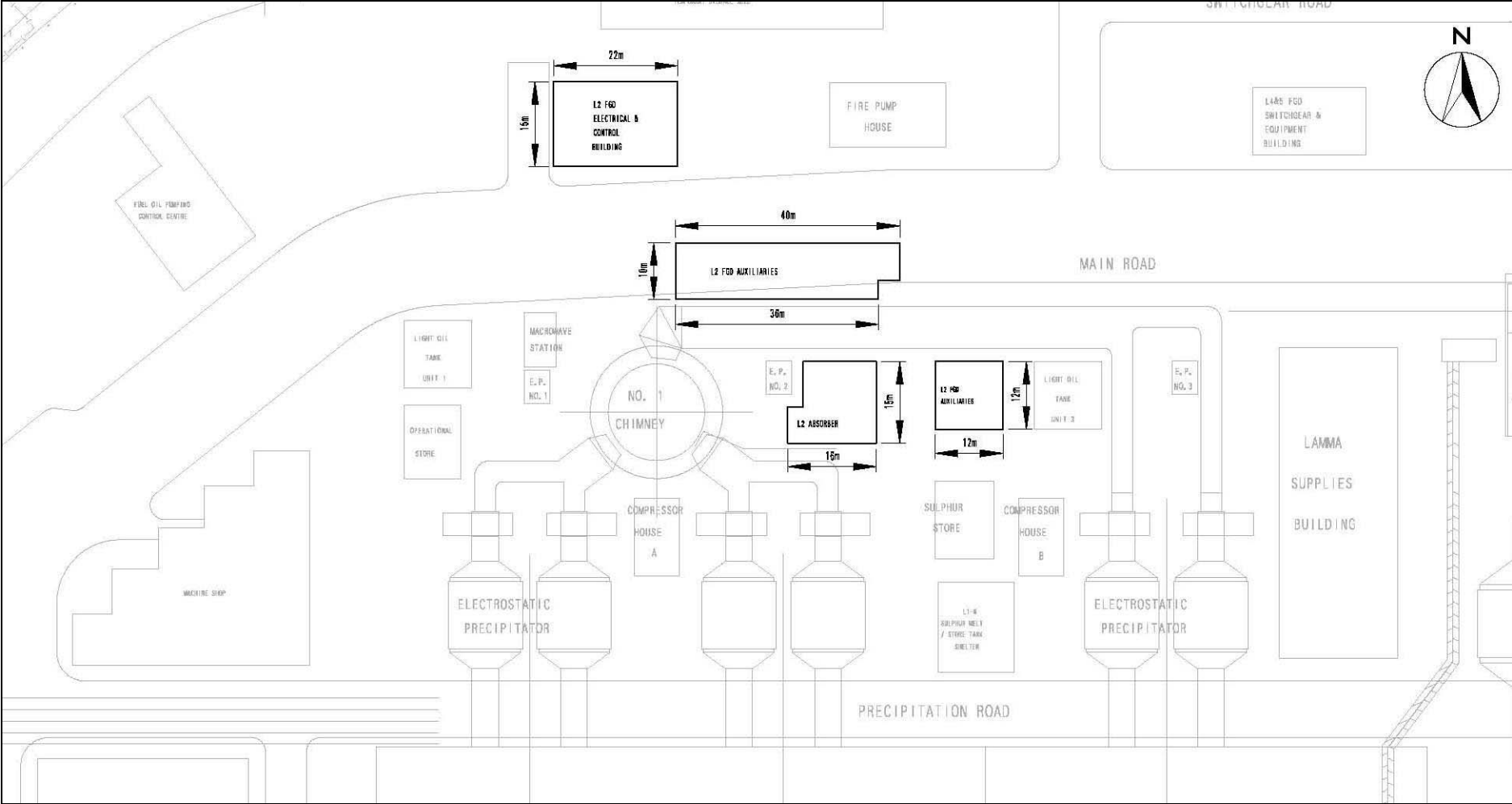


Figure 1.2b General Arrangement of L2 FGD Plant

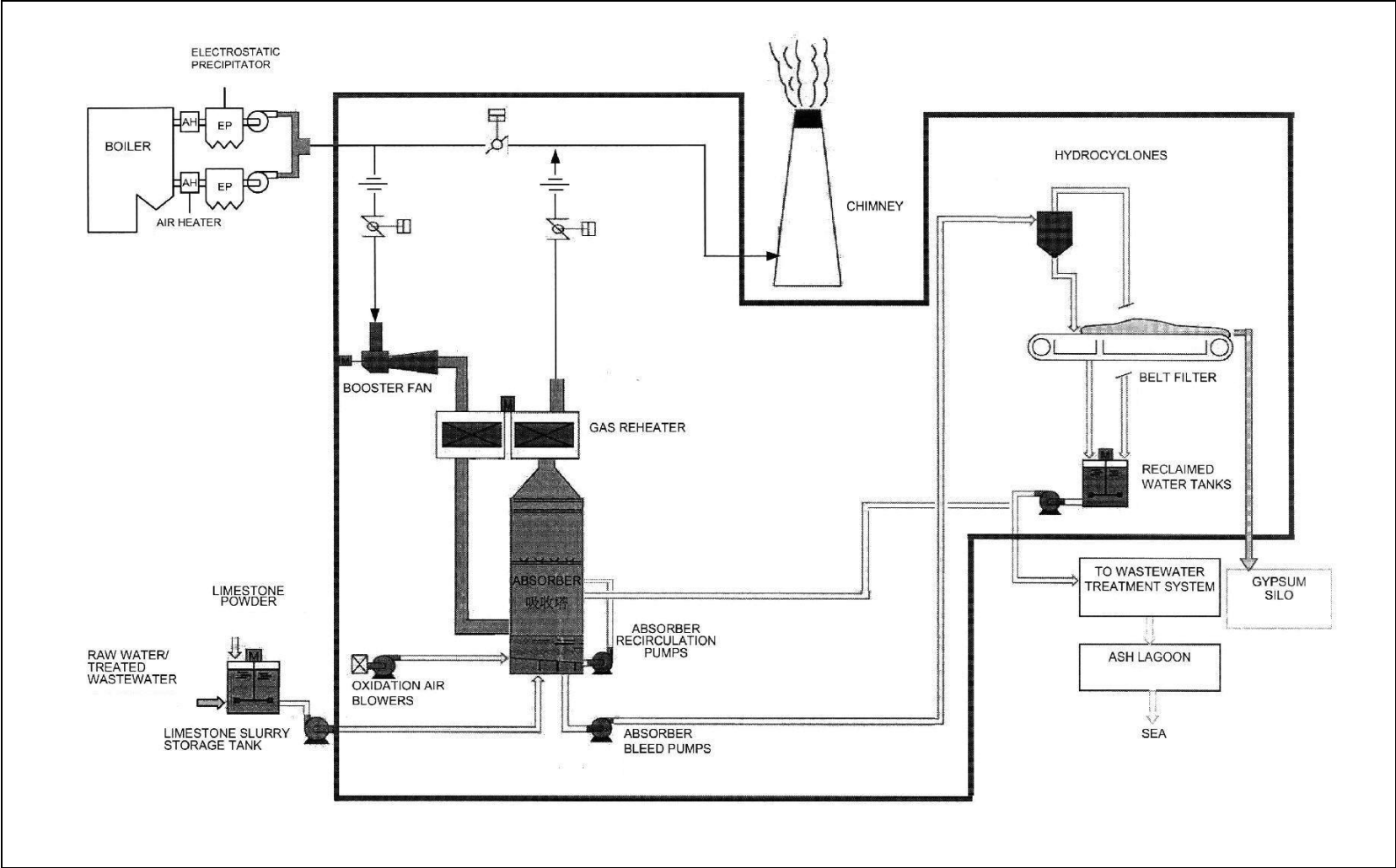


Figure 1.3 Schematic Diagram of the L2, L4 & L5 FGD Plant

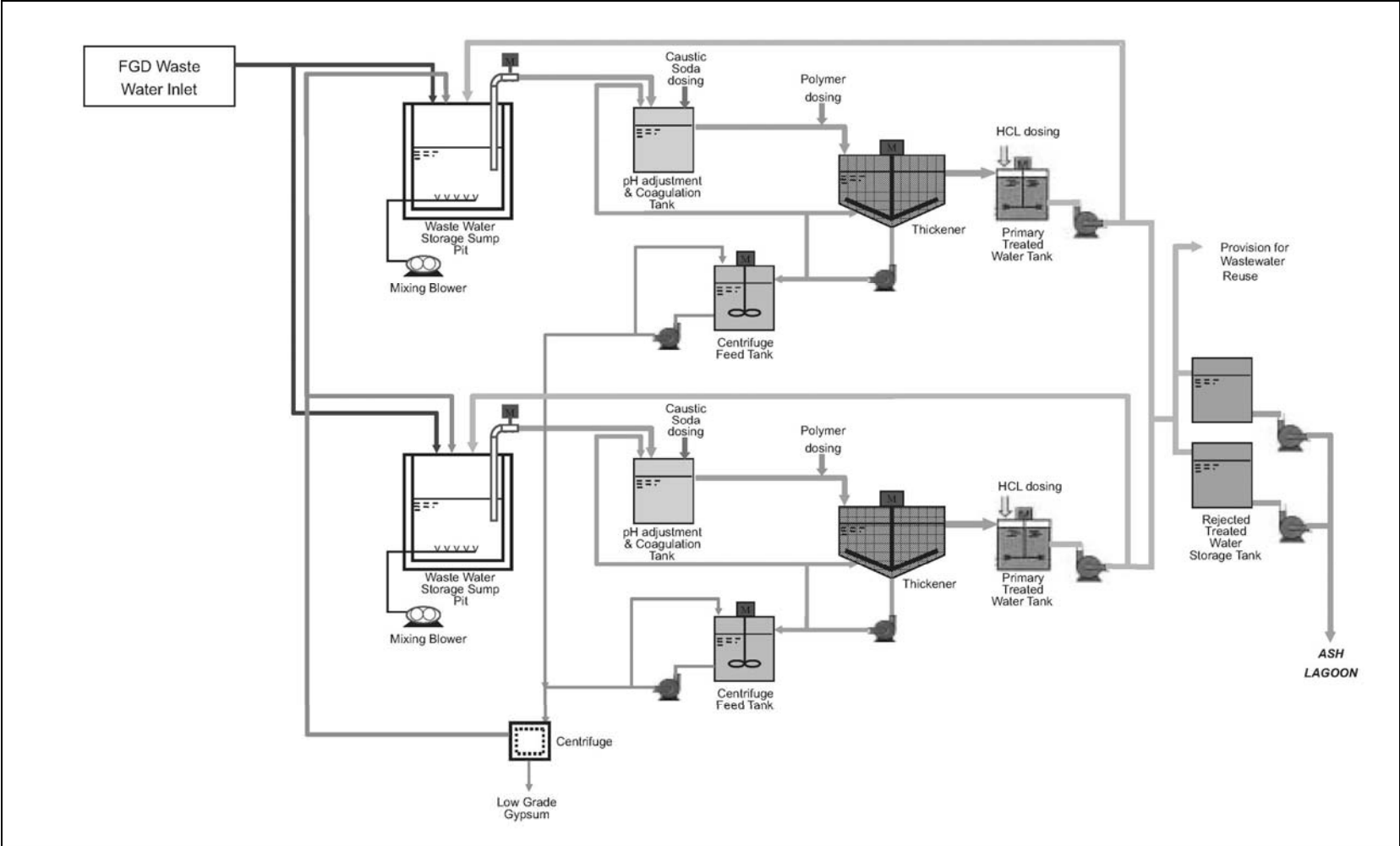


Figure 1.4 Simplified Schematic Diagram of FGD Wastewater Treatment Plant

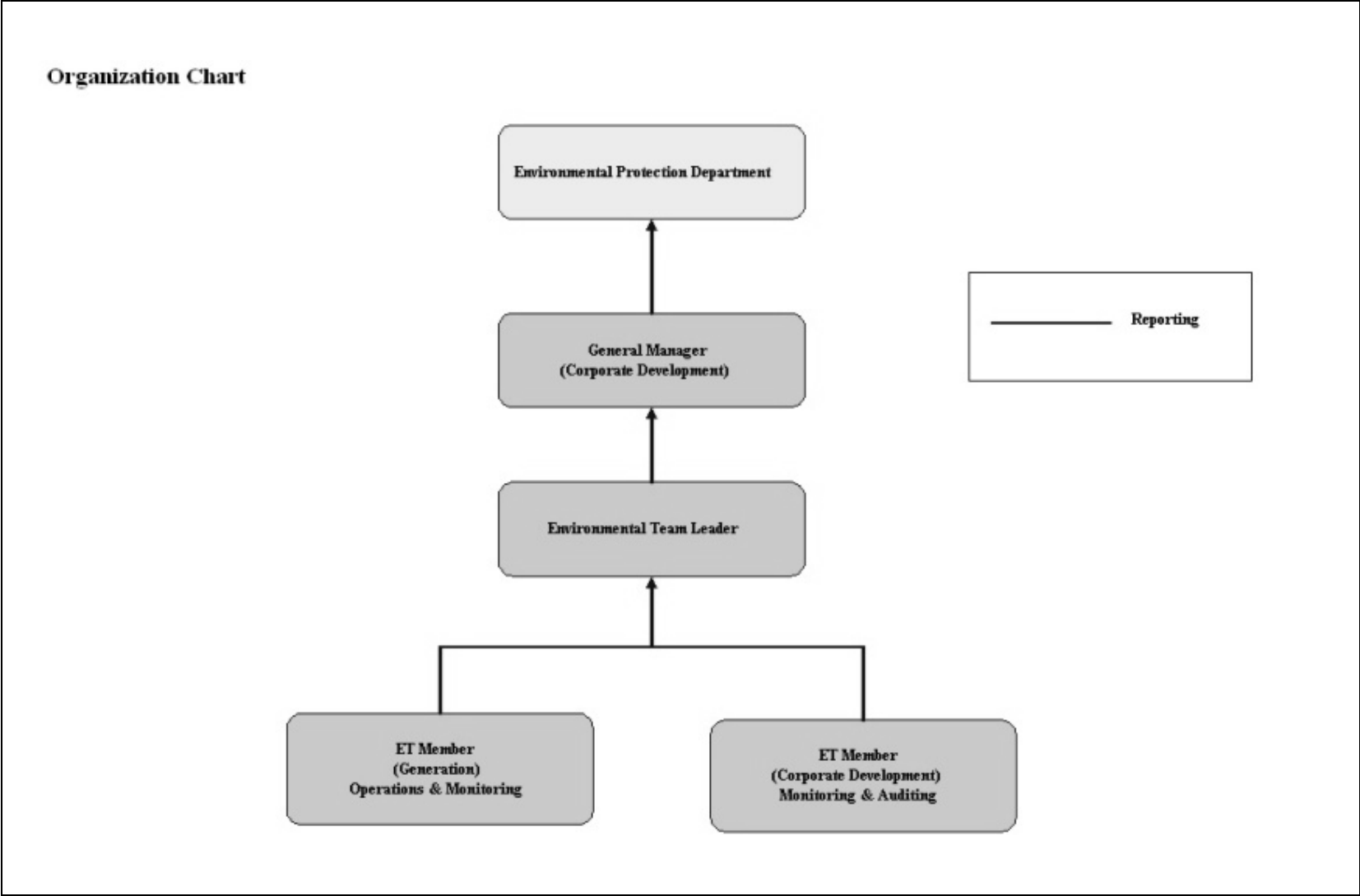


Figure 1.5 Organization Structure at Operational Phase of the Projects

2. AIR QUALITY

2.1 Monitoring Requirements

Since the Projects will bring a general air quality improvement, no additional EM&A activities are considered required, besides those already in place, such as those required by specified process licenses for the operation of the existing Lamma Power Station. In accordance with the requirements stipulated in the Specified Processes Licence issued under Air Pollution Control Ordinance, various operation parameters as stated in Table 2.1 were monitored and checked against the Action/Limit Levels shown in Appendix A.

Table 2.1 Air Quality Monitoring Parameters and Frequency

Sources of Emission	Parameter	Frequency
Steam boilers L2, L4 & L5	Particulate	Once / year
	Particulate (Opacity)	Continuous
	SO ₂	Continuous
	NO _x expressed as NO ₂ (For L4 and L5 only)	Continuous
Fugitive Dust (Coal, PFA, Limestone, gypsum)	Total Suspended Particulate	Once every six days
Chimney emissions	Ambient air	Continuous at existing ambient air monitoring stations
	SO ₂	
	NO ₂	

2.2 Summary of Results and Observations

Monitoring of various parameters as listed in Table 2.1 above was conducted during the operation of Units L2, L4 and L5 in the reporting period. A summary of monitoring data is shown in Appendix B.

No Action/Limit Level exceedance was recorded in the reporting period.

Ambient air monitoring at Queen Mary Hospital was temporarily suspended since November 2013 due to the re-development of the Senior Staff Quarter building of

Queen Mary Hospital. Site searching for a suitable location for the replacement station was in progress.

3. WATER QUALITY

3.1 Monitoring Requirements

According to the EIA Report/ Project Profile for the Projects, the current monitoring programme for the Lamma Power Station can cover the Projects and no additional EM&A measures are required besides those already in place. Hence, the EM&A work on water quality should strictly follow the relevant monitoring requirements stipulated in the discharge licence for Ash Lagoon issued under the Water Pollution Control Ordinance (WPCO).

Water quality monitoring was carried out for FGD Waste Water Treatment Plant (WWTP) in the reporting period. The parameters stated in Table 3.1 were monitored and checked against the Action/Limit Levels as given in Appendix A.

Table 3.1 Water Quality Monitoring Parameters and Frequencies

Item	Parameters	Frequencies
1	pH	Daily
2	Suspended Solids	Daily
3	Iron	Monthly
4	Barium	Monthly
5	Mercury	Monthly
6	Cadmium	Monthly
7	Cyanide	Monthly
8	Total Phosphorus	Monthly
9	Total Nitrogen	Monthly

3.2 Summary of Results and Observations

Monitoring of various parameters as listed in Table 3.1 above was carried out during the discharge of the WWTP in the reporting period. A summary of the data is shown in Appendix C.

The data recorded for the monitoring parameters were all below their corresponding Action/Limit Levels. No Action/Limit level exceedance was recorded in the reporting period. The effluent quality was generally satisfactory.

4. ENVIRONMENTAL AUDIT

4.1 Review of Environmental Monitoring Procedures

The environmental monitoring procedures were regularly reviewed by the Environmental Team. No modification to the existing monitoring procedures was recommended.

4.2 Assessment of Environmental Monitoring Results

Monitoring results for Air Quality and Water Quality

The environmental monitoring results for air quality, noise and water quality are presented in Sections 2, 3 and 4 respectively are summarized in Table 4.1.

Table 4.1 Summary of Action/Limit Level Exceedances on Monitoring Parameters

Item	Parameter Monitored	Monitoring Period	No. of Exceedances In		Event/Action Plan Implementation Status and Results
			Action Level	Limit Level	
Air					
1	Annual analysis of dust particulate emission rates at chimney stacks.	01/04/14-30/06/14	N.A.	0	
2	Continuous monitoring of opacity, NOx, SO2 and CO2 in the flue gas at the chimney stacks	01/04/14-30/06/14	0	0	
3	TSP monitoring at Lamma Power Station Boundary (ie East Gate and Reservoir).	01/04/14-30/06/14	0	0	
4	Ambient SO2 & NOx monitoring at the Peak, Queen Mary Hospital, Victoria Road, Chung Hom Kok, Ap Lei Chau and	01/04/14-30/06/14	0	0	

Item	Parameter Monitored	Monitoring Period	No. of Exceedances In		Event/Action Plan Implementation Status and Results
			Action Level	Limit Level	
	Cheung Chau.				
Water					
1	pH in WWTP Effluent	01/04/14-30/06/14	0	0	
2	Suspended Solids in WWTP Effluent	01/04/14-30/06/14	0	0	
3	Iron in WWTP Effluent	01/04/14-30/06/14	0	0	
4	Barium in WWTP Effluent	01/04/14-30/06/14	0	0	
5	Mercury in WWTP Effluent	01/04/14-30/06/14	0	0	
6	Cadmium in WWTP Effluent	01/04/14-30/06/14	0	0	
7	Cyanide in WWTP Effluent	01/04/14-30/06/14	0	0	
8	Total Phosphorus in WWTP Effluent	01/04/14-30/06/14	0	0	
9	Total Nitrogen in WWTP Effluent	01/04/14-30/06/14	0	0	

Waste Management Records

The quantity of FGD gypsum and sludge collected for reuse by contractor in the reporting period are shown in Table 4.2.

Table 4.2 Amount of Gypsum and Sludge Collected for Reuse by Contractor

Period	Amount of Gypsum Collected	Amount of Sludge Collected
April 2014	5504.9 MT	0 MT
May 2014	4596.6 MT	0 MT
June 2014	9355.5 MT	0 MT

4.3 Status of Environmental Licensing and Permitting

All permits/licenses obtained as of June 2014 are summarised in Table 4.3.

Table 4.3 Summary of Environmental Licensing and Permit Status

Description	Permit / Licence No.	Valid Period		Status
		From	To	
Environmental Permit for Units L4/5 FGD Plants Retrofit	EP-248/2006	25/04/2006	-	Valid
Environmental Permit for Unit L2 FGD Plant Retrofit	EP-287/2007	02/10/2007	-	Valid
Specified Processes Licence issued under APCO	L-7-002(9)	01/01/2013	31/12/2014	Valid
WPCO discharge licence for Ash Lagoon	WT00011131-2011	15/12/2011	31/12/2016	Valid

4.4 Implementation Status of Environmental Mitigation Measures

Mitigation measures detailed in the EIA Report and EP are required to be implemented. A summary of the Environmental Mitigation Implementation Schedule (EMIS) is presented in Appendix D.

4.5 Implementation Status of Event/Action Plan

A list of specific actions in the event of exceedances of the various threshold levels for specific emission and discharge sources is given in Appendix A.

As no Action/Limit level exceedance was recorded, no action has been devised.

4.6 Implementation Status of Environmental Complaint Handling Procedures

During the reporting period, there was no complaint against the operation of Lamma Power Station.

Table 4.4 Environmental Complaints Received

Case Reference / Date, Time Received / Date, Time Concerned	Descriptions / Actions Taken	Conclusion / Status
Nil	N/A	N/A

Table 4.5 Outstanding Environmental Complaints Carried Over

Case Reference / Date, Time Received / Date, Time Concerned	Descriptions / Actions Taken	Conclusion / Status
Nil	N/A	N/A

5. FUTURE KEY ISSUES

5.1 Outage Plan for the coming 3 months

No major outage plan for the coming three months.

5.2 Key issues for the coming 3 months

Key issues to be considered in the coming 3 months include:

Air Impact

- To continuously carry out the air quality monitoring for Units L2, L4 and L5.

Water Impact

- To continuously carry out the water quality monitoring for FGD Waste Water Treatment Plant.

6. CONCLUSION

Environmental monitoring was performed as required in the reporting period from April to June 2014. All monitoring results were checked and reviewed.

No Action/Limit level exceedance on air quality parameters were recorded in the reporting period.

No Action/Limit level exceedance on water quality parameters were recorded in the reporting period.

Environmental mitigation measures recommended in the EIA Report and EP were implemented in the reporting period. No environmental complaint against the operation of Lamma Power Station was received during the reporting period. No prosecution was received for the Projects in the reporting period.

The environmental performance of the Projects was generally satisfactory.

Appendix A Event/Action Plans in Response to Exceedance of AL Levels

A.1 Air

Source of Emissions	Parameters to be Monitored	Frequency	Concentration Not to Be Exceeded	Action	Limit	Proposed Action
Steam boilers L2, L4 and L5	Particulate	once/year	50 mg/Nm ³	-	50	ET Leader informs Generation Division at action level. Maintenance initiated. Temporary load shift until pollution control equipment repaired and reinstated. Report to EPD.
	Particulate (Opacity)	continuous	40% (bihourly)	35	40	
	SO ₂	continuous	200 mg/Nm ³ (1h)	190	200	
	NO _x expressed as NO ₂ (For L4 and L5 only)	continuous	615 mg/Nm ³ (1h)	585	615	
Fugitive dust (Coal, PFA, limestone, gypsum)	TSP	Once every six days.	260 (µg/m ³) (24 hours)	-	260	Investigation of sources and additional dust suppression to be employed at Limit level. Frequency of monitoring to be increased as necessary.
Chimney emissions	Ambient air SO ₂	Continuous at existing ambient air monitoring stations	800 (µg/m ³) (1h)	-	800	ET to review data on post-hoc basis and check for possible power station contribution.
	NO ₂		300 (µg/m ³) (1h)	-	300	

A.2 Water

Source of Discharges	Parameters to be Monitored	Frequency	Concentration Not to Be Exceeded	Action	Limit	Proposed Action
FGD Wastewater Treatment Plant	pH	Daily	6-9	-	6-9	If pH exceeds limit level, consideration to be given to adjust chemical dosing. ET Leader inform Generation Division and investigation be initiated to identify and remedy cause.
	Suspended Solids	Daily	30 mg/L	25	30	
	Iron	Monthly	4 mg/L	3.6	4	For all other parameters except pH, Generation Division to be informed, frequency of monitoring to be increased, and investigations to be initiated to identify cause and remedy if concentration exceeds action level. If problem persists to exceed the limit level, ET Leader verbally informs EPD and ensures remedial actions implemented.
	Barium	Monthly	1.5 mg/L	1.3	1.5	
	Mercury	Monthly	0.005 mg/L	0.0045	0.005	
	Cadmium	Monthly	0.005 mg/L	0.0045	0.005	
	Cyanide	Monthly	0.1 mg/L	0.09	0.1	
	Total Phosphorus	Monthly	8 mg/L	7.2	8	
	Total Nitrogen	Monthly	400 mg/L	360	400	

B.2 Unit L2, L4 and L5 Stack Monitoring at Lamma Power Station

B.2.1 Monthly Summary of Stack NO_x and SO₂ for Unit L5

Date	Daily Maximum		
	SO ₂ concentration (mg/Nm ³) [#]	NO _x concentration (mg/Nm ³) [#]	Opacity (%)
1/4/2014	*	*	*
2/4/2014	*	*	*
3/4/2014	*	*	*
4/4/2014	*	*	*
5/4/2014	*	*	*
6/4/2014	*	*	*
7/4/2014	*	*	*
8/4/2014	*	*	*
9/4/2014	*	*	*
10/4/2014	*	*	*
11/4/2014	*	*	*
12/4/2014	*	*	*
13/4/2014	*	*	*
14/4/2014	*	*	*
15/4/2014	*	*	*
16/4/2014	*	*	*
17/4/2014	*	*	*
18/4/2014	*	*	*
19/4/2014	*	*	*
20/4/2014	*	*	*
21/4/2014	*	*	*
22/4/2014	*	*	*
23/4/2014	*	*	*
24/4/2014	*	*	*
25/4/2014	*	*	*
26/4/2014	*	*	*
27/4/2014	*	*	*
28/4/2014	*	*	*
29/4/2014	*	*	*
30/4/2014	*	*	*

Date	Daily Maximum		
	SO2 concentration (mg/Nm3) [#]	NOx concentration (mg/Nm3) [#]	Opacity (%)
1/5/2014	*	*	*
2/5/2014	*	*	*
3/5/2014	*	*	*
4/5/2014	*	*	*
5/5/2014	*	*	*
6/5/2014	*	*	*
7/5/2014	*	*	*
8/5/2014	*	*	*
9/5/2014	*	*	*
10/5/2014	*	*	*
11/5/2014	*	*	*
12/5/2014	*	*	*
13/5/2014	*	*	*
14/5/2014	*	*	*
15/5/2014	*	*	*
16/5/2014	*	*	*
17/5/2014	*	*	*
18/5/2014	*	*	*
19/5/2014	*	*	*
20/5/2014	*	*	*
21/5/2014	*	*	*
22/5/2014	*	*	*
23/5/2014	142	330	20
24/5/2014	63	400	16
25/5/2014	101	398	17
26/5/2014	122	411	12
27/5/2014	113	440	12
28/5/2014	121	435	12
29/5/2014	99	394	17
30/5/2014	104	385	12
31/5/2014	122	420	12

Date	Daily Maximum		
	SO2 concentration (mg/Nm3) [#]	NOx concentration (mg/Nm3) [#]	Opacity (%)
1/6/2014	97	411	12
2/6/2014	80	407	12
3/6/2014	50	423	14
4/6/2014	82	423	14
5/6/2014	95	413	14
6/6/2014	53	421	14
7/6/2014	51	402	14
8/6/2014	25	388	13
9/6/2014	90	442	14
10/6/2014	108	461	15
11/6/2014	111	461	15
12/6/2014	85	433	16
13/6/2014	125	469	15
14/6/2014	129	444	13
15/6/2014	46	431	13
16/6/2014	90	448	15
17/6/2014	101	424	14
18/6/2014	138	440	14
19/6/2014	143	430	15
20/6/2014	105	383	16
21/6/2014	32	386	15
22/6/2014	23	428	14
23/6/2014	47	392	16
24/6/2014	25	406	16
25/6/2014	23	404	18
26/6/2014	31	411	13
27/6/2014	55	422	14
28/6/2014	91	465	14
29/6/2014	87	432	14
30/6/2014	96	417	24

Note: # - Hourly average value. Expressed as at 0°C, 101.325kPa, dry and corrected to 12% CO₂ condition.

* - Unit L5 was not on load.

B.2.2 Monthly Summary of Stack NO_x and SO₂ for Unit L4

Date	Daily Maximum		
	SO ₂ concentration (mg/Nm ³) [#]	NO _x concentration (mg/Nm ³) [#]	Opacity (%)
1/4/2014	108	403	8
2/4/2014	127	380	9
3/4/2014	52	472	7
4/4/2014	90	460	8
5/4/2014	29	439	7
6/4/2014	32	413	7
7/4/2014	58	436	8
8/4/2014	75	383	8
9/4/2014	53	353	7
10/4/2014	21	377	7
11/4/2014	52	282	8
12/4/2014	48	304	7
13/4/2014	*	*	*
14/4/2014	51	370	10
15/4/2014	38	379	7
16/4/2014	35	371	8
17/4/2014	73	367	9
18/4/2014	102	415	8
19/4/2014	84	459	9
20/4/2014	109	455	9
21/4/2014	88	460	9
22/4/2014	106	466	11
23/4/2014	86	443	15
24/4/2014	76	407	16
25/4/2014	85	426	15
26/4/2014	96	353	14
27/4/2014	62	399	14
28/4/2014	91	404	17
29/4/2014	89	436	17
30/4/2014	52	455	19

Date	Daily Maximum		
	SO2 concentration (mg/Nm3) [#]	NOx concentration (mg/Nm3) [#]	Opacity (%)
1/5/2014	36	413	13
2/5/2014	64	440	22
3/5/2014	30	511	19
4/5/2014	27	501	13
5/5/2014	37	453	24
6/5/2014	11	469	11
7/5/2014	43	436	23
8/5/2014	77	304	25
9/5/2014	108	478	23
10/5/2014	95	348	18
11/5/2014	77	415	12
12/5/2014	138	452	14
13/5/2014	119	452	13
14/5/2014	78	451	14
15/5/2014	69	427	15
16/5/2014	82	396	15
17/5/2014	79	395	15
18/5/2014	92	452	14
19/5/2014	49	440	14
20/5/2014	89	411	14
21/5/2014	50	445	15
22/5/2014	111	427	14
23/5/2014	83	441	14
24/5/2014	86	357	14
25/5/2014	61	436	15
26/5/2014	89	409	14
27/5/2014	92	459	13
28/5/2014	71	455	13
29/5/2014	75	409	14
30/5/2014	80	472	14
31/5/2014	132	452	13

Date	Daily Maximum		
	SO2 concentration (mg/Nm3) [#]	NOx concentration (mg/Nm3) [#]	Opacity (%)
1/6/2014	124	404	14
2/6/2014	55	449	14
3/6/2014	61	347	17
4/6/2014	90	407	16
5/6/2014	107	394	17
6/6/2014	56	405	16
7/6/2014	63	427	14
8/6/2014	47	496	17
9/6/2014	62	444	17
10/6/2014	50	404	17
11/6/2014	27	402	18
12/6/2014	97	432	25
13/6/2014	74	364	16
14/6/2014	22	397	14
15/6/2014	15	431	14
16/6/2014	31	468	17
17/6/2014	144	325	17
18/6/2014	92	369	18
19/6/2014	81	481	20
20/6/2014	63	451	21
21/6/2014	36	502	18
22/6/2014	21	502	16
23/6/2014	57	437	19
24/6/2014	37	382	19
25/6/2014	41	381	18
26/6/2014	87	490	23
27/6/2014	76	401	22
28/6/2014	100	387	20
29/6/2014	66	357	16
30/6/2014	120	397	24

Note: # - Hourly average value. Expressed as at 0°C, 101.325kPa, dry and corrected to 12% CO₂ condition.

* - Unit L4 was not on load.

B.2.3 Monthly Summary of Stack SO₂ for Unit L2

Date	Daily Maximum	
	SO ₂ concentration (mg/Nm ³) [#]	Opacity (%)
1/4/2014	*	*
2/4/2014	*	*
3/4/2014	70	20
4/4/2014	*	*
5/4/2014	*	*
6/4/2014	*	*
7/4/2014	*	*
8/4/2014	*	*
9/4/2014	*	*
10/4/2014	*	*
11/4/2014	*	*
12/4/2014	*	*
13/4/2014	*	*
14/4/2014	*	*
15/4/2014	*	*
16/4/2014	*	*
17/4/2014	*	*
18/4/2014	*	*
19/4/2014	*	*
20/4/2014	*	*
21/4/2014	*	*
22/4/2014	95	21
23/4/2014	116	17
24/4/2014	141	16
25/4/2014	*	*
26/4/2014	*	*
27/4/2014	*	*
28/4/2014	138	17
29/4/2014	74	17
30/4/2014	87	17

Date	Daily Maximum	
	SO2 concentration (mg/Nm3) [#]	Opacity (%)
1/5/2014	*	*
2/5/2014	60	17
3/5/2014	*	*
4/5/2014	*	*
5/5/2014	*	*
6/5/2014	*	*
7/5/2014	*	*
8/5/2014	*	*
9/5/2014	*	*
10/5/2014	*	*
11/5/2014	*	*
12/5/2014	130	19
13/5/2014	131	18
14/5/2014	62	19
15/5/2014	99	20
16/5/2014	82	20
17/5/2014	155	19
18/5/2014	150	18
19/5/2014	156	17
20/5/2014	164	17
21/5/2014	166	18
22/5/2014	145	17
23/5/2014	145	17
24/5/2014	*	*
25/5/2014	*	*
26/5/2014	104	17
27/5/2014	*	*
28/5/2014	*	*
29/5/2014	*	*
30/5/2014	*	*
31/5/2014	*	*

Date	Daily Maximum	
	SO2 concentration (mg/Nm3) [#]	Opacity (%)
1/6/2014	*	*
2/6/2014	*	*
3/6/2014	*	*
4/6/2014	128	15
5/6/2014	120	16
6/6/2014	105	16
7/6/2014	114	17
8/6/2014	50	17
9/6/2014	50	20
10/6/2014	*	*
11/6/2014	*	*
12/6/2014	*	*
13/6/2014	*	*
14/6/2014	*	*
15/6/2014	*	*
16/6/2014	89	17
17/6/2014	123	18
18/6/2014	114	17
19/6/2014	*	*
20/6/2014	*	*
21/6/2014	*	*
22/6/2014	*	*
23/6/2014	*	*
24/6/2014	*	*
25/6/2014	*	*
26/6/2014	*	*
27/6/2014	*	*
28/6/2014	*	*
29/6/2014	*	*

Note: # - Hourly average value. Expressed as at 0°C, 101.325kPa, dry and corrected to 12% CO₂ condition.

* - Unit L2 was not on load.

B.3 Ambient SO₂ and NO₂ monitoring Data at Southern District and Cheung Chau

THE HONGKONG ELECTRIC COMPANY, LTD.
AIR QUALITY DATA MONTHLY TIME SERIES REPORT

STATION : VICTORIA PEAK
POLLUTANT : SULPHUR DIOXIDE

MONTH:APRIL

YEAR : 2014
UNIT : MICROGRAMS/CUBIC METER

DAY	1	2	3	4	5	6	7	8	9	10	11	12	13	14	15	16	17	18	19	20	21	22	23	24	MEAN
1	2	3	3	2	2	3	2	2	6	5	4	4	4	4	5	6	3	5	4	4	3	3	3	2	4
2	2	2	2	2	2	2	2	2	2	3	3	3	3	3	2	3	2	3	3	2	2	2	0	1	2
3	2	1	2	2	1	1	1	1	1	4	4	2	2	4	5	2	2	2	0	1	1	1	1	1	2
4	0	1	1	1	3	3	3	3	3	4	5	4	3	2	2	3	4	4	4	4	3	3	5	5	3
5	5	4	4	4	4	4	5	5	5	6	5	6	6	6	6	6	6	6	5	6	7	6	5	5	5
6	7	4	3	4	3	3	3	3	4	5	5	5	6	3	2	1	2	2	1	1	2	1	2	2	3
7	2	1	2	2	2	2	2	2	2	2	2	2	2	2	3	2	3	3	2	2	2	2	2	2	2
8	2	2	2	2	2	2	1	1	2	6	5	3	3	3	2	3	6	5	6	2	2	2	1	0	3
9	1	0	1	0	1	1	1	1	3	4	3	2	2	2	3	3	2	2	2	3	3	2	1	0	2
10	1	1	1	2	1	1	1	1	1	1	2	2	2	2	1	2	3	3	3	3	2	3	2	2	2
11	2	1	1	2	1	1	0	2	2	3	5	5	5	5	6	5	4	4	4	3	3	3	3	2	3
12	3	3	4	2	2	2	2	3	3	3	4	5	5	4	5	5	4	5	4	4	3	3	3	2	3
13	1	2	4	2	1	8	4	8	23	16	21	19	38	26	24	35	24	20	16	17	18	12	15	83	18
14	25	24	9	39	10	12	14	15	14	5	3	2	2	2	2	2	3	2	2	2	2	2	4	3	8
15	3	3	4	4	3	3	3	4	4	3	4	4	4	6	6	7	8	7	6	4	3	2	2	1	4
16	2	1	2	2	1	2	2	3	3	4	5	5	5	5	5	5	5	5	3	3	3	2	2	2	3
17	2	2	2	2	2	2	2	1	3	10	6	5	3	3	3	4	4	4	3	3	3	3	2	1	3
18	1	1	1	1	1	1	1	1	1	1	3	5	5	6	7	7	4	4	3	3	3	2	2	2	3
19	2	2	1	1	1	1	1	1	1	1	2	2	3	3	3	3	3	3	3	4	5	4	3	10	3
20	18	30	27	19	5	3	4	4	4	9	4	34	15	17	13	12	8	11	15	13	15	20	16	11	14
21	8	4	1	1	0	0	0	0	0	0	0	0	0	0	0	0	0	0	0	0	0	0	0	0	1
22	0	0	0	0	0	0	0	0	1	5	5	2	1	2	4	11	8	4	9	14	19	20	20	52	7
23	25	9	5	4	2	1	0	0	0	0	0	0	0	0	0	0	0	0	0	0	0	0	0	1	2
24	0	0	0	0	0	0	1	0	0	1	1	1	0	1	1	1	1	0	0	1	0	0	0	0	0
25	0	0	0	0	0	0	0	0	0	3	2	1	1	1	1	1	1	1	1	1	1	0	0	1	1
26	1	0	0	0	0	0	0	0	0	0	1	1	1	1	1	0	0	0	0	1	6	0	0	3	1
27	6	1	1	1	1	1	1	1	2	19	22	18	10	11	13	17	23	25	23	21	21	15	9	4	11
28	8	19	13	22	16	4	3	2	2	2	4	9	12	23	23	14	6	3	3	3	4	4	3	4	9
29	3	4	3	3	3	2	1	1	3	3	2	3	2	2	3	3	3	2	2	1	2	2	1	3	2
30	2	2	1	1	1	1	0	1	1	3	2	4	4	3	2	3	2	2	1	1	0	1	0	0	2

MONTHLY STATISTICS:

GEOM		ARITH		<-----PERCENTILE----->					<-----RANGE----->				STN	GEOM	PERCENT	NO. OF TIMES		
MEAN	MEDIAN	MEAN		50	90	95	98	99	1-HR		24-HR		DEVIATION	VALID	DATA	1-HR	24-HR	
3	2	4		2	9	18	24	27	0	-	83	0	-	18	2	100	0	0

- NOTES: 1. FLAGS FOR INVALID DATA :
D : DYNAMIC CALIBRATION
T : TELEMETRY/DATALOGGR/ANALYZER FAULT
M : MAINTENANCE OR MACHINE SHUTDOWN
P : POWER FAILURE
2. BRACKETED READINGS EXCEED 1-HR OBJECTIVE 800 OR 24-HR OBJECTIVE 350

THE HONGKONG ELECTRIC COMPANY, LTD.
AIR QUALITY DATA MONTHLY TIME SERIES REPORT

STATION : VICTORIA PEAK
POLLUTANT : NITROGEN DIOXIDE

MONTH:APRIL

YEAR : 2014
UNIT : MICROGRAMS/CUBIC METER

DAY	1	2	3	4	5	6	7	8	9	10	11	12	13	14	15	16	17	18	19	20	21	22	23	24	MEAN
1	60	44	8	6	4	5	7	21	75	75	65	73	62	61	65	75	47	65	42	37	29	28	21	17	41
2	13	10	7	8	6	9	13	17	53	67	82	67	59	46	40	49	68	47	42	16	19	6	7	5	32
3	4	5	4	8	7	6	9	28	31	81	97	77	61	89	100	63	66	56	20	33	17	10	30	40	39
4	4	8	17	19	12	14	17	32	36	25	22	22	27	24	20	30	23	29	25	20	11	15	20	11	20
5	14	14	12	9	9	6	9	13	19	28	15	17	16	7	12	10	11	17	20	15	9	7	9	11	13
6	13	6	7	7	7	11	11	16	21	20	16	18	15	17	15	13	13	12	14	14	17	15	10	8	13
7	6	6	6	5	4	5	10	17	26	43	41	51	47	52	68	71	66	67	39	19	16	17	14	14	30
8	10	8	9	6	5	5	8	11	54	105	98	82	72	70	71	62	110	94	102	16	41	29	5	10	45
9	6	5	3	1	0	0	1	12	54	71	68	50	40	33	40	34	20	17	12	3	9	6	3	2	20
10	0	3	2	2	2	1	4	13	23	45	44	42	43	37	21	23	20	31	30	18	8	10	6	6	18
11	8	5	2	2	1	4	5	9	34	44	61	75	61	62	52	56	36	36	21	4	4	13	1	7	25
12	3	2	7	0	1	0	0	12	41	31	24	54	38	33	32	21	23	21	28	19	8	8	5	1	17
13	2	14	13	8	1	34	8	25	42	35	30	33	52	39	43	55	45	52	65	60	49	27	31	123	37
14	52	74	14	54	5	4	11	39	55	23	19	20	21	29	34	25	27	26	15	10	11	12	13	12	25
15	14	9	12	11	8	6	8	10	9	12	13	23	21	65	93	102	119	95	40	13	6	2	1	10	29
16	9	5	5	3	2	5	9	21	48	63	50	48	49	54	55	62	67	59	23	4	1	1	0	1	27
17	0	2	2	2	0	2	4	16	34	53	44	62	18	20	21	22	26	27	20	19	19	10	3	0	18
18	0	0	13	5	8	2	19	19	7	6	13	17	16	14	17	14	20	28	31	32	14	5	7	2	13
19	1	2	0	0	0	0	0	0	1	8	27	16	15	17	26	M	38	20	30	45	66	44	14	73	19
20	77	64	60	66	7	9	14	17	19	30	14	40	28	33	21	30	32	53	68	67	68	75	70	46	42
21	31	11	7	9	7	8	11	8	7	6	6	7	4	5	3	6	8	16	21	19	13	9	8	4	10
22	0	0	0	6	0	0	1	6	40	47	61	49	35	30	36	43	33	29	47	46	79	82	81	88	35
23	83	42	27	14	6	6	6	9	20	33	32	21	19	23	34	32	35	28	16	9	8	8	9	4	22
24	1	1	0	1	0	0	0	1	12	37	40	34	22	43	62	65	51	38	15	5	7	1	1	2	18
25	0	0	0	0	0	0	0	2	35	89	81	47	18	15	43	40	25	35	41	19	35	16	5	12	23
26	11	11	6	5	6	4	5	8	34	54	66	45	54	72	74	66	60	37	16	46	75	10	18	69	36
27	85	29	31	20	4	5	11	9	27	80	64	45	36	39	40	53	60	65	62	45	62	77	50	35	43
28	35	55	36	61	36	9	12	26	51	59	73	90	56	72	67	47	31	22	36	41	46	35	27	36	44
29	8	15	8	1	0	0	6	22	59	74	37	48	37	38	41	44	46	30	12	8	3	2	3	8	23
30	4	1	2	3	1	4	5	19	63	93	55	83	75	66	72	91	86	85	21	23	15	30	14	17	39

MONTHLY STATISTICS:

GEOM		ARITH		<-----PERCENTILE----->					<-----RANGE----->				STN	GEOM	PERCENT	NO. OF TIMES		
MEAN	MEDIAN	MEAN		50	90	95	98	99	1-HR		24-HR		DEVIATION	VALID DATA		ABOVE OBJECTIVE		
																1-HR	24-HR	
18	19	27		19	66	75	90	98	0	-	123	10	-	45	3	100	0	0

- NOTES: 1. FLAGS FOR INVALID DATA :
D : DYNAMIC CALIBRATION
T : TELEMETRY/DATALOGGR/ANALYZER FAULT
M : MAINTENANCE OR MACHINE SHUTDOWN
P : POWER FAILURE
2. BRACKETED READINGS EXCEED 1-HR OBJECTIVE 300 OR 24-HR OBJECTIVE 150

THE HONGKONG ELECTRIC COMPANY, LTD.
AIR QUALITY DATA MONTHLY TIME SERIES REPORT

STATION : VICTORIA PEAK
POLLUTANT : SULPHUR DIOXIDE

MONTH: MAY

YEAR : 2014
UNIT : MICROGRAMS/CUBIC METER

DAY	1	2	3	4	5	6	7	8	9	10	11	12	13	14	15	16	17	18	19	20	21	22	23	24	MEAN	
1	0	0	0	0	0	0	0	0	0	0	0	0	0	1	1	1	1	1	1	0	0	0	0	0	0	
2	0	0	0	0	0	0	0	0	0	0	0	0	0	1	1	1	1	2	2	1	1	1	1	1	1	
3	0	1	2	2	1	1	1	1	2	3	4	3	3	3	2	2	1	1	0	0	0	0	0	0	1	
4	0	0	0	0	0	0	0	0	0	0	0	0	0	0	0	0	0	0	0	0	0	0	1	2	0	
5	0	1	1	1	0	5	3	6	9	8	6	2	1	0	0	0	0	0	0	0	0	0	0	0	2	
6	0	0	0	0	1	1	1	1	0	0	0	0	0	0	0	0	0	0	0	0	0	0	0	0	0	
7	0	0	0	0	0	0	0	0	0	0	1	0	1	2	2	3	2	2	1	0	0	0	0	0	1	
8	0	1	0	1	0	0	1	0	1	1	1	1	3	2	3	3	2	2	2	1	1	1	1	1	0	
9	0	0	0	0	0	0	0	0	0	0	0	0	0	0	0	0	0	0	0	0	0	0	0	0	0	
10	0	0	0	0	0	0	0	0	1	1	1	1	1	0	0	0	1	2	3	1	1	2	1	1	1	
11	1	2	1	1	1	1	1	0	1	1	0	1	0	0	1	1	1	0	0	0	0	0	0	0	1	
12	0	0	0	0	0	0	0	1	1	0	0	0	0	0	4	3	3	1	3	3	1	1	1	4	1	
13	2	0	0	0	0	0	0	0	0	0	0	0	0	0	0	0	0	0	0	0	0	0	0	0	0	
14	0	0	0	0	0	0	0	0	0	0	0	0	0	0	0	0	0	0	0	0	0	0	0	0	0	
15	0	0	0	0	0	0	0	0	0	0	0	0	0	0	0	0	1	1	1	4	2	1	0	5	1	
16	1	0	0	0	0	0	0	0	0	0	0	0	0	0	0	0	0	0	0	0	0	0	0	1	0	
17	0	0	0	0	0	0	0	0	0	0	0	0	0	0	0	0	0	0	0	0	0	0	0	2	0	
18	0	0	0	0	0	0	0	0	0	0	0	0	0	0	0	0	0	0	0	0	0	0	0	2	0	
19	0	0	0	0	0	0	0	0	0	0	0	2	0	0	2	0	0	0	0	0	0	0	0	0	2	0
20	0	0	0	0	0	0	0	0	0	0	0	0	0	0	2	3	1	1	0	4	1	0	0	1	1	
21	0	0	0	0	0	0	0	0	0	45	6	0	0	0	0	0	0	0	0	0	0	0	0	0	2	
22	0	0	0	0	0	0	0	0	0	0	0	0	0	0	0	0	0	0	0	0	0	0	0	2	0	
23	0	0	0	0	0	0	0	0	0	0	0	0	0	0	0	0	0	0	0	0	0	0	0	0	0	
24	0	0	0	0	0	0	0	0	0	0	0	0	0	0	0	0	0	0	0	0	0	0	0	0	0	
25	0	0	0	0	0	0	0	0	0	0	0	0	0	0	0	0	0	0	0	0	0	0	0	2	0	
26	0	0	0	0	0	0	0	0	0	0	0	0	0	0	0	0	0	0	0	0	0	0	0	0	0	
27	0	0	0	0	0	0	0	0	0	0	0	0	0	0	0	1	2	0	0	0	0	0	0	0	0	
28	0	0	0	0	0	0	0	0	0	0	0	0	0	0	0	0	0	0	0	0	0	0	0	0	0	
29	0	0	0	0	0	0	0	0	0	0	0	0	0	0	0	D	D	1	0	0	0	0	1	1	0	
30	0	0	0	0	0	0	0	0	0	0	0	0	0	0	0	0	0	0	0	0	0	0	0	1	0	
31	0	0	0	0	0	0	0	0	0	M	M	M	0	0	2	0	0	0	0	1	1	4	2	6	1	

MONTHLY STATISTICS:

GEOM		ARITH		<-----PERCENTILE----->					<-----RANGE----->				STN	GEOM	PERCENT	NO. OF TIMES		
MEAN	MEDIAN	MEAN		50	90	95	98	99	1-HR		24-HR		DEVIATION	VALID DATA		ABOVE OBJECTIVE		
																1-HR	24-HR	
2	0	0		0	1	2	3	5	0	-	45	0	-	2	2	99	0	0

- NOTES: 1. FLAGS FOR INVALID DATA :
D : DYNAMIC CALIBRATION
T : TELEMETRY/DATALOGGR FAULT
M : MAINTENANCE OR ANALYZER FAULT
P : POWER FAILURE
2. BRACKETED READINGS EXCEED 1-HR OBJECTIVE 800 OR 24-HR OBJECTIVE 350

THE HONGKONG ELECTRIC COMPANY, LTD.
AIR QUALITY DATA MONTHLY TIME SERIES REPORT

STATION : VICTORIA PEAK
POLLUTANT : NITROGEN DIOXIDE

MONTH: MAY

YEAR : 2014
UNIT : MICROGRAMS/CUBIC METER

DAY	1	2	3	4	5	6	7	8	9	10	11	12	13	14	15	16	17	18	19	20	21	22	23	24	MEAN
1	12	13	6	6	5	4	7	10	16	8	25	23	19	19	17	11	10	8	10	7	6	5	2	5	11
2	6	4	2	1	1	3	3	12	31	29	21	12	19	34	38	41	35	22	29	9	10	5	5	11	16
3	2	6	0	3	2	0	1	3	15	28	24	14	13	6	10	M	7	6	3	1	0	0	0	1	6
4	0	0	0	0	0	0	0	0	0	0	0	0	0	0	1	4	7	19	10	8	5	5	29	15	4
5	1	14	22	22	4	23	19	36	70	84	73	64	33	32	23	22	31	31	28	35	29	24	18	40	32
6	24	13	12	8	8	6	6	10	11	8	16	19	18	20	21	17	17	28	14	19	7	8	9	8	14
7	4	3	2	2	2	2	3	12	39	62	61	70	71	99	97	100	80	92	39	21	17	18	21	4	38
8	0	0	4	5	0	3	2	2	38	43	28	15	70	53	74	70	60	56	25	0	0	0	6	21	24
9	5	1	0	1	3	4	1	4	18	20	25	32	23	35	31	20	19	27	13	0	0	5	15	17	13
10	6	2	1	0	3	1	0	2	32	52	25	9	4	9	6	5	11	9	24	9	8	6	4	3	10
11	4	5	1	2	2	2	3	5	10	11	6	5	8	11	11	9	9	4	21	16	2	4	2	7	
12	13	1	3	9	10	13	12	15	19	19	22	22	19	18	48	37	52	26	62	50	24	20	34	24	24
13	29	26	16	6	19	17	18	18	22	26	13	6	7	24	11	8	9	8	7	11	11	17	15	14	15
14	8	9	8	8	6	7	7	8	13	M	20	8	0	0	0	0	0	0	0	0	0	0	0	0	4
15	0	0	0	0	0	0	2	0	0	0	0	0	0	0	0	0	2	0	0	0	1	0	10	2	1
16	0	0	0	0	0	1	0	0	0	0	0	0	1	3	M	17	9	12	9	6	3	7	6	8	4
17	5	4	3	3	7	8	6	8	10	10	11	11	6	7	8	15	8	13	13	14	12	18	12	13	9
18	10	10	7	4	73	17	13	12	23	68	28	11	11	14	12	7	15	23	26	17	19	14	11	9	19
19	9	11	7	3	2	3	8	6	6	5	11	9	5	9	12	8	14	14	13	18	10	7	14	4	9
20	5	10	1	0	0	0	0	1	1	1	2	2	3	13	25	14	11	31	9	19	16	6	7	5	8
21	5	5	7	12	1	4	5	10	6	39	10	6	7	8	9	10	6	7	9	11	9	6	9	12	9
22	9	4	2	3	4	1	2	6	8	12	9	8	6	8	11	16	11	16	14	11	12	17	12	8	9
23	11	13	8	5	10	6	4	8	11	11	14	14	20	15	9	13	11	16	22	26	25	14	6	5	12
24	5	4	5	4	4	3	5	6	9	13	12	8	9	12	10	16	13	17	24	25	17	24	13	11	11
25	10	5	12	4	3	4	5	6	5	3	19	25	22	21	21	20	10	14	18	17	18	17	9	5	12
26	6	8	4	7	2	1	1	3	6	7	5	7	14	11	16	9	8	9	8	11	14	12	9	7	8
27	5	6	5	4	4	3	9	11	12	21	35	41	31	22	23	40	44	22	14	11	9	9	5	8	16
28	15	9	6	4	4	7	11	13	13	11	12	8	8	12	8	4	5	10	8	8	12	18	35	13	11
29	14	4	7	6	5	5	12	21	11	10	10	10	8	5	8	D	D	6	12	18	23	M	18	11	11
30	6	3	4	9	8	3	4	11	9	19	23	15	14	12	16	14	16	16	15	22	15	19	25	20	13
31	20	5	2	9	5	10	14	21	31	M	M	M	12	10	14	14	11	13	21	24	28	29	23	17	16

MONTHLY STATISTICS:

GEOM		ARITH		<-----PERCENTILE----->					<-----RANGE----->					STN	GEOM	PERCENT	NO. OF TIMES	
MEAN	MEDIAN	MEAN		50	90	95	98	99	1-HR		24-HR		DEVIATION	VALID	DATA	1-HR	24-HR	
10	9	13		9	26	37	65	73	0	-	100	1	-	38	2	99	0	0

- NOTES: 1. FLAGS FOR INVALID DATA :
D : DYNAMIC CALIBRATION
T : TELEMETRY/DATALOGGR FAULT
M : MAINTENANCE OR ANALYZER FAULT
P : POWER FAILURE
2. BRACKETED READINGS EXCEED 1-HR OBJECTIVE 300 OR 24-HR OBJECTIVE 150

THE HONGKONG ELECTRIC COMPANY, LTD.
AIR QUALITY DATA MONTHLY TIME SERIES REPORT

STATION : VICTORIA PEAK
POLLUTANT : SULPHUR DIOXIDE

MONTH: JUNE

YEAR : 2014
UNIT : MICROGRAMS/CUBIC METER

DAY	1	2	3	4	5	6	7	8	9	10	11	12	13	14	15	16	17	18	19	20	21	22	23	24	MEAN	
1	5	1	0	1	0	1	1	1	0	1	2	0	3	0	0	1	1	2	2	2	0	2	4	3	1	
2	2	1	0	0	0	0	1	0	2	2	1	0	1	0	0	0	0	1	0	1	0	0	2	2	1	
3	0	0	0	0	1	2	1	0	1	0	1	1	0	0	0	1	0	1	0	1	3	8	2	2	1	
4	6	1	0	0	0	0	0	0	0	0	0	2	0	0	0	0	0	1	1	2	0	3	0	2	1	
5	1	0	0	0	0	0	0	0	2	1	4	3	3	9	13	4	1	1	2	3	2	1	4	1	2	
6	2	0	0	0	0	1	0	0	0	0	0	0	1	1	5	2	2	5	6	5	19	16	11	8	4	
7	4	2	6	0	3	1	4	1	9	12	0	0	7	4	2	1	2	4	2	0	0	0	2	7	3	
8	2	2	6	3	5	15	19	28	28	30	31	31	38	34	29	28	26	26	28	26	21	13	0	0	20	
9	0	0	0	0	0	0	0	0	1	2	1	0	0	0	0	0	0	0	0	0	0	0	0	0	1	0
10	1	0	0	0	0	0	0	0	0	0	0	0	0	1	1	1	0	1	3	2	1	2	3	4	1	
11	2	1	1	0	0	0	1	0	0	0	0	0	0	0	0	0	1	1	1	2	3	3	2	3	1	
12	2	1	2	0	1	1	2	2	2	3	3	3	3	3	3	3	3	3	3	4	6	7	6	6	3	
13	5	4	5	6	5	6	7	8	11	5	5	5	4	4	3	3	1	1	0	0	3	3	1	2	4	
14	1	2	2	2	2	2	2	2	10	11	2	2	5	20	18	13	18	7	2	4	1	1	0	1	5	
15	5	19	24	18	24	21	7	9	9	3	1	1	1	8	11	11	11	11	17	16	9	4	2	2	10	
16	2	2	1	0	1	1	0	0	0	0	1	2	3	3	2	2	2	0	0	0	0	1	0	0	1	
17	0	0	0	0	0	1	0	0	0	1	0	1	1	1	2	1	0	0	0	1	1	1	0	1	1	
18	0	0	0	1	2	0	0	0	0	2	4	4	4	1	0	0	0	1	1	1	1	1	2	3	1	
19	0	0	0	0	0	0	0	0	1	2	0	0	0	0	2	1	2	1	0	0	1	0	0	2	1	
20	2	1	2	2	1	1	0	0	0	0	1	1	1	2	1	10	3	1	1	1	1	1	2	2	2	
21	1	1	1	0	1	0	1	0	0	0	0	0	0	0	0	0	0	0	0	1	4	3	0	1	1	
22	0	0	0	0	0	0	0	0	0	0	0	0	0	0	2	1	0	12	0	5	4	2	1	5	1	
23	3	2	2	0	0	1	0	0	1	2	0	0	0	0	2	0	3	2	3	2	2	3	2	0	1	
24	0	2	4	2	0	1	0	0	1	1	1	1	0	1	1	5	3	2	3	3	4	5	1	1	2	
25	1	2	4	2	0	2	0	1	2	3	1	10	1	1	1	5	0	0	2	0	0	2	1	3	2	
26	2	3	1	0	0	1	4	4	6	3	5	39	105	16	10	10	9	6	5	9	8	7	9	5	11	
27	6	9	10	5	2	4	1	0	1	2	14	20	6	7	4	2	1	6	7	16	9	11	15	9	7	
28	3	2	1	2	7	13	6	4	7	18	28	13	16	13	16	5	7	11	13	11	9	6	4	3	9	
29	2	2	1	0	1	1	1	2	2	6	0	1	0	0	0	0	0	0	0	0	0	0	0	0	1	
30	0	0	0	0	0	0	0	0	0	0	0	2	0	1	0	5	3	4	2	1	1	1	0	1	1	

MONTHLY STATISTICS:

GEOM		ARITH		<-----PERCENTILE----->					<-----RANGE----->				STN	GEOM	PERCENT	NO. OF TIMES		
MEAN	MEDIAN	MEAN		50	90	95	98	99	1-HR		24-HR		DEVIATION	VALID DATA		ABOVE OBJECTIVE		
3	1	3		1	9	15	26	29	0	-	105	0	-	20	3	100	0	0

- NOTES: 1. FLAGS FOR INVALID DATA :
D : DYNAMIC CALIBRATION
T : TELEMETRY/DATALOGGR FAULT
M : MAINTENANCE OR ANALYZER FAULT
P : POWER FAILURE
2. BRACKETED READINGS EXCEED 1-HR OBJECTIVE 800 OR 24-HR OBJECTIVE 350

THE HONGKONG ELECTRIC COMPANY, LTD.
AIR QUALITY DATA MONTHLY TIME SERIES REPORT

STATION : VICTORIA PEAK
POLLUTANT : NITROGEN DIOXIDE

MONTH: JUNE

YEAR : 2014
UNIT : MICROGRAMS/CUBIC METER

DAY	1	2	3	4	5	6	7	8	9	10	11	12	13	14	15	16	17	18	19	20	21	22	23	24	MEAN
1	14	5	3	6	5	10	10	12	3	7	12	5	11	8	5	8	10	15	19	21	17	32	43	11	12
2	13	6	0	3	2	3	2	3	7	5	6	3	6	2	3	5	3	6	8	13	8	8	15	7	6
3	3	1	2	1	5	10	6	8	9	10	10	10	8	6	6	9	10	12	9	11	13	21	19	7	9
4	18	4	3	0	1	1	1	3	6	7	4	9	4	3	3	5	5	13	11	18	13	19	6	10	7
5	9	1	0	4	6	5	3	4	8	7	18	17	14	26	34	17	13	12	25	29	24	22	27	18	14
6	29	4	6	3	6	15	10	3	4	9	13	9	15	13	37	29	29	51	51	62	89	62	32	24	25
7	22	11	58	2	21	21	42	8	23	34	18	19	40	29	24	23	30	40	35	26	31	31	78	80	31
8	32	20	15	13	18	43	57	57	46	44	59	65	71	64	59	63	52	55	74	63	41	20	5	6	43
9	2	3	5	1	2	2	5	14	37	55	47	31	14	14	27	23	17	33	8	4	2	3	4	1	15
10	1	0	0	1	0	0	3	10	19	24	14	12	7	15	29	24	16	15	18	6	12	9	3	4	10
11	0	0	0	0	0	0	1	5	14	21	14	26	10	9	20	18	20	17	17	13	7	5	2	1	9
12	1	3	2	0	0	1	7	12	11	18	29	24	25	40	34	40	51	63	58	45	23	17	17	12	22
13	16	10	5	4	4	3	14	33	61	58	46	48	38	38	49	57	52	59	44	28	20	13	16	26	31
14	18	9	2	5	3	8	10	30	46	54	50	33	29	50	52	41	63	52	21	32	41	64	30	31	32
15	24	43	51	27	46	62	39	28	33	12	16	9	3	14	23	22	25	29	27	29	35	32	7	2	27
16	0	0	0	0	1	0	0	3	5	7	8	5	14	18	18	16	12	7	8	7	7	7	5	2	6
17	3	3	0	1	4	18	0	5	6	14	11	9	11	13	16	17	12	10	8	20	17	16	2	2	9
18	1	M	0	6	24	3	2	5	5	15	26	17	20	7	6	4	11	10	11	11	17	10	12	8	10
19	5	0	1	0	2	5	0	7	8	9	12	11	5	6	7	8	12	11	13	6	10	5	7	6	7
20	3	0	1	1	0	0	2	2	1	8	14	14	8	8	7	21	13	9	11	10	10	10	8	5	7
21	0	1	0	0	1	1	7	4	1	19	8	19	21	17	17	17	14	13	16	24	26	32	8	9	11
22	4	3	21	4	5	0	9	20	20	29	12	5	13	16	29	19	2	32	24	49	46	38	32	37	20
23	5	1	1	0	0	1	3	6	9	12	9	6	6	8	16	10	13	8	15	10	8	16	17	2	8
24	3	5	21	5	0	2	0	0	5	6	7	9	7	8	9	15	10	8	11	21	23	20	4	3	8
25	4	4	7	2	0	4	2	3	6	9	5	14	3	3	5	10	2	6	9	3	12	13	10	11	6
26	6	3	0	0	0	2	5	11	13	4	8	21	35	7	9	13	18	9	16	22	17	13	16	6	11
27	9	15	18	3	0	4	1	0	3	4	12	19	6	14	8	6	9	10	20	36	22	22	38	20	12
28	8	2	1	2	11	19	6	8	12	23	23	11	12	10	12	14	21	22	21	25	30	28	20	4	14
29	3	2	0	0	0	0	1	3	3	10	0	0	0	0	0	0	0	0	0	2	1	0	0	4	1
30	0	0	0	0	0	3	4	5	7	11	10	6	12	8	5	10	9	10	13	11	13	7	1	0	6

MONTHLY STATISTICS:

GEOM	ARITH	<-----PERCENTILE----->					<-----RANGE----->					STN GEOM	PERCENT	NO. OF TIMES			
MEAN	MEDIAN	50	90	95	98	99	1-HR		24-HR		DEVIATION	VALID DATA	1-HR	24-HR			
10	9	14	9	35	50	62	64	0	-	89	1	-	43	3	100	0	0

- NOTES: 1. FLAGS FOR INVALID DATA :
D : DYNAMIC CALIBRATION
T : TELEMETRY/DATALOGGR FAULT
M : MAINTENANCE OR ANALYZER FAULT
P : POWER FAILURE
2. BRACKETED READINGS EXCEED 1-HR OBJECTIVE 300 OR 24-HR OBJECTIVE 150

THE HONGKONG ELECTRIC COMPANY, LTD.
AIR QUALITY DATA MONTHLY TIME SERIES REPORT

STATION : CHUNG HOM KOK ZONE SUBSTATION
POLLUTANT : SULPHUR DIOXIDE

MONTH:APRIL

YEAR : 2014
UNIT : MICROGRAMS/CUBIC METER

DAY	1	2	3	4	5	6	7	8	9	10	11	12	13	14	15	16	17	18	19	20	21	22	23	24	MEAN
1	0	0	0	2	1	0	0	0	0	0	0	0	0	1	2	1	4	3	0	0	0	0	0	0	1
2	0	2	1	0	1	0	0	0	0	0	0	0	0	0	0	0	0	0	0	0	0	0	0	0	0
3	1	0	0	0	0	0	0	0	0	0	0	0	0	0	0	0	0	0	0	0	0	0	0	0	0
4	0	0	0	0	3	1	0	0	0	1	7	1	0	0	0	0	0	0	3	1	0	3	4	2	1
5	2	1	2	2	2	2	4	2	2	3	5	4	5	3	5	3	7	4	8	7	8	5	5	4	4
6	8	4	5	5	8	5	4	6	5	6	4	4	5	1	0	0	0	0	0	0	0	0	0	0	3
7	0	0	0	0	0	0	0	0	0	0	0	0	0	0	0	0	0	0	1	0	2	1	1	0	0
8	1	2	0	0	0	0	0	0	0	0	0	0	1	0	0	0	0	33	10	0	1	0	0	5	2
9	4	3	0	0	0	0	0	0	0	0	0	0	0	0	0	0	2	3	7	6	5	0	0	0	1
10	0	0	0	1	1	0	0	0	0	0	0	0	0	0	0	0	0	0	1	0	2	1	0	0	0
11	0	0	0	0	0	0	0	0	0	0	1	1	4	4	4	2	2	1	5	1	2	2	0	3	1
12	5	7	6	0	0	0	0	0	0	0	0	2	2	3	1	0	4	3	23	10	10	5	4	6	4
13	4	0	29	40	26	53	52	52	83	86	67	100	45	34	54	41	50	60	36	52	28	20	36	11	44
14	11	32	65	23	9	4	4	7	15	0	0	0	0	0	0	0	0	0	0	0	1	3	2	0	7
15	0	0	1	0	0	0	0	1	0	0	0	0	1	0	0	0	0	0	1	0	0	0	0	0	0
16	0	0	0	0	0	0	0	1	1	1	4	3	4	6	6	6	5	0	1	0	0	0	1	0	2
17	1	0	0	0	0	0	0	0	9	0	0	0	0	0	2	1	4	2	5	2	5	4	0	0	1
18	0	0	0	0	0	0	0	0	0	0	1	4	3	8	7	11	7	10	5	2	2	6	12	2	3
19	3	1	0	0	0	0	0	0	0	0	0	1	3	0	1	1	4	4	4	5	6	14	11	4	3
20	0	0	1	12	49	15	1	2	7	24	19	40	68	34	70	45	26	45	45	58	45	29	22	22	28
21	19	3	4	7	0	0	0	0	0	0	0	0	0	0	0	0	0	0	0	0	0	0	0	0	1
22	0	0	0	0	0	0	0	0	0	0	0	0	0	0	0	1	6	22	31	28	20	16	15	11	6
23	6	4	11	10	2	0	1	0	0	0	0	0	0	0	0	0	0	0	0	0	0	0	0	0	1
24	0	0	0	0	0	0	0	0	0	0	0	0	0	0	0	0	0	0	0	0	0	0	0	0	0
25	0	0	0	0	0	0	0	0	0	0	0	0	0	0	0	0	0	0	0	0	0	0	0	0	0
26	2	0	0	0	0	0	0	0	0	0	0	0	0	1	0	0	0	0	0	0	0	0	2	2	0
27	1	0	0	0	3	45	17	20	26	73	65	42	36	27	25	34	58	50	54	26	26	9	9	3	27
28	1	5	7	4	7	0	0	0	0	4	19	49	40	9	2	2	2	2	2	5	6	6	4	4	8
29	5	5	2	3	2	1	0	1	1	0	1	1	2	3	2	0	0	1	2	0	2	1	3	1	2
30	0	0	0	0	0	0	0	0	0	0	0	0	0	0	0	0	0	0	0	0	0	0	0	0	0

MONTHLY STATISTICS:

GEOM		ARITH		<-----PERCENTILE----->					<-----RANGE----->				STN	GEOM	PERCENT	NO. OF TIMES		
MEAN	MEDIAN	MEAN		50	90	95	98	99	1-HR		24-HR		DEVIATION	VALID DATA		ABOVE OBJECTIVE		
																1-HR	24-HR	
5	0	5		0	12	34	53	65	0	-	100	0	-	44	4	100	0	0

- NOTES: 1. FLAGS FOR INVALID DATA :
D : DYNAMIC CALIBRATION
T : TELEMETRY/DATALOGGR FAULT
M : MAINTENANCE OR ANALYZER FAULT
P : POWER FAILURE
2. BRACKETED READINGS EXCEED 1-HR OBJECTIVE 800 OR 24-HR OBJECTIVE 350

THE HONGKONG ELECTRIC COMPANY, LTD.
AIR QUALITY DATA MONTHLY TIME SERIES REPORT

STATION : CHUNG HOM KOK ZONE SUBSTATION
POLLUTANT : NITROGEN DIOXIDE

MONTH:APRIL

YEAR : 2014
UNIT : MICROGRAMS/CUBIC METER

DAY	1	2	3	4	5	6	7	8	9	10	11	12	13	14	15	16	17	18	19	20	21	22	23	24	MEAN
1	34	25	20	26	22	8	7	21	28	33	15	10	16	16	19	36	23	25	21	14	14	13	10	10	19
2	9	13	10	9	9	8	11	14	13	11	13	10	32	30	23	23	18	25	19	21	14	8	11	10	15
3	12	9	7	12	7	11	13	10	32	26	27	37	28	28	24	18	17	13	12	11	25	22	14	6	18
4	17	8	8	14	23	7	7	12	14	12	19	15	9	9	10	13	15	16	18	17	13	14	15	11	13
5	10	9	8	9	10	9	13	12	14	17	20	19	16	17	20	20	26	22	31	20	21	13	16	9	16
6	14	9	9	8	13	11	8	12	13	13	11	11	13	12	13	10	8	8	7	8	8	10	8	6	10
7	6	6	6	6	6	7	7	9	9	9	10	9	8	9	10	8	11	10	10	13	13	10	8	7	9
8	10	11	9	7	8	8	8	9	12	13	12	12	15	26	24	12	33	77	54	49	39	8	11	43	21
9	22	M	14	6	8	12	14	18	22	18	12	11	8	9	10	12	23	33	29	30	26	15	10	7	16
10	9	8	6	6	8	5	7	9	9	8	8	8	8	10	11	16	19	18	15	14	17	13	9	5	10
11	7	7	6	6	4	9	12	10	7	10	11	13	13	13	14	14	13	10	17	12	13	11	8	11	10
12	13	13	15	6	7	6	5	11	15	16	16	17	16	15	15	12	22	27	53	37	28	15	13	21	17
13	28	27	43	59	43	68	67	58	65	59	56	58	32	31	38	29	45	55	57	67	57	61	50	57	50
14	27	34	50	25	14	11	18	45	39	13	12	16	12	10	9	11	12	11	12	14	13	15	16	9	19
15	9	7	9	8	7	5	8	14	11	11	13	12	12	10	10	8	8	9	9	7	7	7	9	5	9
16	5	5	4	4	4	6	7	6	10	12	18	17	15	15	17	19	13	6	11	6	5	5	5	7	9
17	9	7	10	5	8	7	7	15	31	20	14	6	9	9	12	12	24	20	36	13	11	11	4	8	13
18	5	4	4	7	8	5	7	6	11	10	9	12	11	15	14	22	18	25	41	16	11	20	28	13	13
19	15	9	9	6	8	7	7	10	15	18	14	18	17	14	19	17	27	31	30	19	15	33	28	19	17
20	9	7	11	22	44	19	11	33	36	43	40	41	47	27	43	33	28	33	54	58	53	40	31	43	34
21	37	11	24	30	12	9	9	8	9	12	14	12	10	12	8	11	8	10	15	14	9	8	10	8	13
22	10	7	6	7	9	7	6	13	13	20	16	18	15	12	10	16	27	59	56	50	68	73	71	68	27
23	53	M	25	21	14	10	15	14	11	12	11	11	11	12	10	13	12	13	14	10	10	9	11	11	14
24	7	7	6	7	6	8	7	11	10	10	9	10	9	7	7	12	11	12	10	11	13	7	8	8	9
25	7	6	5	5	7	5	6	9	10	11	8	7	10	10	8	18	13	14	13	8	11	10	12	13	9
26	15	12	9	8	11	8	8	9	12	14	11	11	10	14	13	10	18	23	13	8	41	29	38	20	15
27	14	9	14	9	13	98	76	72	65	79	76	62	69	52	65	78	84	90	92	73	91	47	36	18	58
28	20	41	42	20	30	9	9	15	37	63	74	78	66	32	16	17	18	26	12	10	9	10	9	8	28
29	9	12	10	6	5	8	8	14	20	15	13	13	10	14	13	17	20	19	17	15	14	11	18	12	13
30	9	7	5	7	9	7	8	11	11	11	13	15	11	12	13	9	14	23	8	7	10	10	8	11	10

MONTHLY STATISTICS:

GEOM		ARITH		<-----PERCENTILE----->					<-----RANGE----->					STN	GEOM	PERCENT	NO. OF TIMES	
MEAN	MEDIAN	MEAN		50	90	95	98	99	1-HR		24-HR		DEVIATION	VALID DATA		ABOVE OBJECTIVE	1-HR	24-HR
14	12	18		12	38	57	72	78	4	-	98	9	-	58	2	100	0	0

- NOTES: 1. FLAGS FOR INVALID DATA :
D : DYNAMIC CALIBRATION
T : TELEMETRY/DATALOGGR FAULT
M : MAINTENANCE OR ANALYZER FAULT
P : POWER FAILURE
2. BRACKETED READINGS EXCEED 1-HR OBJECTIVE 300 OR 24-HR OBJECTIVE 150

THE HONGKONG ELECTRIC COMPANY, LTD.
AIR QUALITY DATA MONTHLY TIME SERIES REPORT

STATION : CHUNG HOM KOK ZONE SUBSTATION
POLLUTANT : SULPHUR DIOXIDE

MONTH: MAY

YEAR : 2014
UNIT : MICROGRAMS/CUBIC METER

DAY	1	2	3	4	5	6	7	8	9	10	11	12	13	14	15	16	17	18	19	20	21	22	23	24	MEAN
1	0	0	0	0	0	0	0	0	0	0	0	0	0	0	0	0	0	0	0	0	0	0	0	0	0
2	0	0	0	0	0	0	0	0	0	0	0	0	0	0	0	0	1	3	2	0	1	1	1	1	0
3	0	0	0	3	1	1	0	0	2	2	2	3	1	0	1	0	0	0	0	0	0	0	0	0	1
4	0	0	0	0	0	0	0	0	0	0	0	0	0	0	0	0	0	0	0	0	0	0	0	0	0
5	0	0	0	1	0	0	0	0	8	1	0	0	0	0	0	0	0	0	0	0	0	0	0	0	0
6	0	1	0	0	1	1	1	2	1	0	0	0	0	0	0	0	0	0	0	0	0	0	0	0	0
7	0	0	0	0	0	0	0	0	0	0	0	0	0	0	0	0	0	0	0	0	0	0	0	0	0
8	2	0	0	0	0	0	0	0	0	0	0	0	0	0	0	0	0	0	0	0	2	2	0	0	0
9	0	0	0	0	0	0	0	0	0	0	0	0	0	0	0	0	0	0	0	0	0	0	0	0	0
10	0	0	0	1	1	2	0	0	0	0	0	1	1	1	0	0	2	2	0	0	0	0	0	1	1
11	1	0	0	0	1	2	4	1	3	7	5	7	1	2	3	4	0	0	0	0	0	0	0	0	2
12	0	0	0	0	1	6	3	2	3	3	6	4	3	6	3	11	12	30	5	5	13	13	13	11	6
13	21	9	3	10	1	8	6	5	4	15	3	4	3	3	3	8	11	8	7	13	14	13	11	9	8
14	7	8	18	7	6	9	24	15	15	7	6	2	9	12	11	2	7	9	11	18	29	17	10	12	11
15	6	3	9	10	5	13	12	20	26	15	17	17	22	15	15	11	13	10	18	18	4	8	13	19	13
16	19	15	8	18	19	14	19	24	14	19	9	7	5	7	2	8	18	18	14	14	9	8	6	1	12
17	5	3	4	4	10	15	2	13	4	13	6	4	11	9	6	12	6	6	10	11	7	14	9	3	8
18	3	6	7	4	12	23	16	13	12	11	7	9	9	11	4	1	7	8	1	2	6	13	13	12	9
19	25	16	22	33	12	7	10	4	13	14	20	15	12	10	11	24	18	10	11	7	1	0	0	19	13
20	19	9	18	6	3	1	2	1	3	5	5	12	3	3	19	7	0	0	2	1	3	3	3	6	6
21	3	3	14	2	0	0	2	2	3	2	5	7	3	11	13	8	6	18	4	8	11	2	11	1	6
22	1	3	5	7	5	8	2	5	22	5	10	16	5	4	12	4	9	8	8	8	24	23	10	8	9
23	13	23	5	3	15	24	8	3	11	4	6	24	8	0	0	0	0	0	0	0	0	0	0	0	6
24	0	0	0	0	0	0	0	0	0	0	0	0	0	0	0	0	5	15	11	8	13	5	0	0	2
25	0	0	4	7	15	16	35	25	8	2	18	19	30	9	3	5	4	3	11	15	7	4	18	24	12
26	14	16	12	19	14	7	6	17	26	10	3	2	6	14	2	11	2	4	6	5	8	11	7	5	9
27	7	30	6	0	10	11	8	7	6	10	51	15	10	4	3	17	5	3	3	8	1	6	0	11	10
28	11	13	7	2	11	3	16	36	13	15	10	8	3	5	1	4	4	11	3	8	7	7	18	6	9
29	6	12	27	10	5	7	15	6	16	14	8	8	7	5	3	2	4	4	2	7	7	11	M	10	9
30	24	18	19	29	14	28	26	19	24	31	8	6	3	3	3	10	13	13	17	11	11	7	18	41	17
31	18	4	13	21	15	2	18	4	5	9	8	2	12	9	18	1	2	3	4	30	25	7	2	16	10

MONTHLY STATISTICS:

GEOM		ARITH		<-----PERCENTILE----->					<-----RANGE----->					STN	GEOM	PERCENT	NO. OF TIMES	
MEAN	MEDIAN	MEAN		50	90	95	98	99	1-HR		24-HR		DEVIATION	VALID	DATA	1-HR	24-HR	
7	3	6		3	17	20	26	30	0	-	51	0	-	17	2	100	0	0

- NOTES: 1. FLAGS FOR INVALID DATA :
D : DYNAMIC CALIBRATION
T : TELEMETRY/DATALOGGR FAULT
M : MAINTENANCE OR ANALYZER FAULT
P : POWER FAILURE
2. BRACKETED READINGS EXCEED 1-HR OBJECTIVE 800 OR 24-HR OBJECTIVE 350

THE HONGKONG ELECTRIC COMPANY, LTD.
AIR QUALITY DATA MONTHLY TIME SERIES REPORT

STATION : CHUNG HOM KOK ZONE SUBSTATION
POLLUTANT : NITROGEN DIOXIDE

MONTH: MAY

YEAR : 2014
UNIT : MICROGRAMS/CUBIC METER

DAY	1	2	3	4	5	6	7	8	9	10	11	12	13	14	15	16	17	18	19	20	21	22	23	24	MEAN
1	11	8	6	6	5	7	9	10	11	11	15	14	14	18	12	15	14	14	12	8	9	10	8	7	11
2	6	5	4	5	5	5	7	9	9	8	6	10	10	9	7	11	12	14	12	8	8	8	10	7	8
3	5	4	4	4	4	5	6	7	9	10	8	11	9	11	14	13	12	12	11	10	7	6	7	6	8
4	4	5	3	4	3	4	4	7	6	7	7	7	10	6	9	9	12	12	11	8	8	7	13	11	7
5	12	6	12	37	8	17	20	35	46	32	19	14	13	11	10	10	11	11	8	9	11	9	9	9	16
6	9	9	7	8	9	7	7	12	10	11	10	13	11	14	15	14	17	14	14	12	12	10	7	6	11
7	5	M	5	4	6	5	6	10	9	8	10	11	10	13	17	17	17	12	11	10	9	7	7	11	10
8	12	7	8	8	7	5	8	12	9	9	11	12	14	14	15	14	15	15	22	11	22	17	11	10	12
9	7	13	9	7	5	2	4	9	18	13	13	14	9	10	11	14	15	14	15	12	10	16	20	11	11
10	13	10	6	13	12	12	6	15	18	16	14	15	12	22	19	16	22	18	16	28	19	12	11	13	15
11	12	11	11	11	15	19	25	15	19	25	15	19	17	26	21	22	22	23	21	24	40	27	10	12	19
12	8	3	13	7	11	17	21	32	33	29	35	14	9	10	11	18	24	54	21	28	32	29	23	23	21
13	38	25	13	27	14	27	25	20	15	26	9	8	8	6	6	9	12	15	13	23	24	19	22	16	18
14	15	13	25	13	13	13	22	15	15	8	7	8	11	11	12	4	17	13	15	21	28	18	11	15	14
15	13	7	15	12	11	19	17	26	27	18	15	17	20	18	12	13	17	18	22	25	13	21	26	24	18
16	23	18	12	18	29	28	30	26	16	17	14	11	8	7	8	17	18	22	15	25	18	16	17	9	18
17	12	8	7	5	19	27	9	21	13	18	8	6	10	10	8	9	6	8	13	14	8	15	17	18	12
18	10	11	9	5	16	21	16	10	8	8	5	9	9	13	6	3	11	12	7	7	9	15	17	19	11
19	24	21	25	27	12	3	14	5	8	8	11	9	7	7	10	12	14	11	11	12	12	14	16	30	13
20	20	13	24	10	9	3	4	1	7	4	5	13	3	8	18	13	25	31	52	57	46	21	16	38	18
21	38	M	49	30	15	4	8	25	13	10	19	20	9	14	11	8	10	17	8	10	14	8	19	10	16
22	9	9	8	11	11	17	9	13	22	10	14	14	10	13	14	14	17	12	14	16	26	31	18	18	15
23	27	25	14	8	22	25	14	11	16	13	11	21	18	7	11	15	24	21	26	32	21	9	6	11	17
24	12	9	10	11	7	6	8	8	10	11	12	10	9	8	5	5	9	22	19	18	20	15	15	18	12
25	11	4	11	14	22	17	25	16	9	15	18	13	18	13	11	15	16	14	21	25	16	14	21	26	16
26	20	20	14	19	19	13	8	16	21	9	3	3	3	12	8	18	10	11	12	13	17	20	13	11	13
27	14	30	17	5	15	18	17	16	17	20	37	26	19	17	19	29	21	24	14	20	8	14	8	20	19
28	21	24	18	17	25	16	21	24	17	20	19	12	7	7	5	9	9	15	9	21	16	15	22	14	16
29	15	19	26	15	16	14	23	13	14	18	19	14	11	11	8	8	14	14	14	23	18	19	M	22	16
30	22	23	21	27	23	28	22	18	15	22	13	10	9	10	11	16	21	23	27	29	21	17	27	39	21
31	25	12	19	27	15	6	20	9	6	7	11	7	13	11	18	12	14	18	17	34	30	17	18	32	17

MONTHLY STATISTICS:

GEOM		ARITH		<-----PERCENTILE----->					<-----RANGE----->				STN	GEOM	PERCENT	NO. OF TIMES		
MEAN	MEDIAN	MEAN		50	90	95	98	99	1-HR		24-HR		DEVIATION	VALID DATA		ABOVE OBJECTIVE		
																1-HR	24-HR	
13	13	14		13	25	28	34	39	1	-	57	7	-	21	2	100	0	0

- NOTES: 1. FLAGS FOR INVALID DATA :
D : DYNAMIC CALIBRATION
T : TELEMETRY/DATALOGGR FAULT
M : MAINTENANCE OR ANALYZER FAULT
P : POWER FAILURE
2. BRACKETED READINGS EXCEED 1-HR OBJECTIVE 300 OR 24-HR OBJECTIVE 150

THE HONGKONG ELECTRIC COMPANY, LTD.
AIR QUALITY DATA MONTHLY TIME SERIES REPORT

STATION : CHUNG HOM KOK ZONE SUBSTATION
POLLUTANT : SULPHUR DIOXIDE

MONTH: JUNE

YEAR : 2014
UNIT : MICROGRAMS/CUBIC METER

DAY	1	2	3	4	5	6	7	8	9	10	11	12	13	14	15	16	17	18	19	20	21	22	23	24	MEAN
1	13	23	18	29	14	8	6	4	1	3	5	3	3	5	11	7	8	15	14	10	2	14	13	1	10
2	9	10	5	5	1	3	9	8	13	9	3	2	4	3	0	1	0	0	5	10	17	9	1	15	6
3	3	1	4	6	14	5	5	7	6	8	16	4	4	13	8	4	2	1	0	0	15	12	8	28	7
4	15	7	6	6	8	35	14	21	11	19	19	9	6	6	3	1	4	4	5	3	5	1	17	15	10
5	14	2	6	20	25	17	23	18	10	12	11	9	1	0	9	2	0	1	3	2	6	5	6	6	9
6	6	2	14	11	1	0	0	0	7	7	1	0	3	1	1	1	1	0	1	2	6	19	15	17	5
7	16	16	7	2	1	5	1	36	14	10	28	7	3	5	10	2	24	16	11	11	9	6	6	0	10
8	143	106	34	35	26	12	18	24	32	53	65	41	44	47	41	37	42	35	34	41	34	7	0	0	40
9	0	0	0	0	0	0	0	1	2	1	0	1	0	1	0	0	0	0	0	0	1	2	0	1	0
10	0	0	0	0	0	0	0	0	0	0	0	0	0	0	0	0	1	4	3	2	1	2	1	0	1
11	0	0	0	0	0	1	0	0	0	0	0	0	0	0	0	0	0	0	0	1	1	0	1	1	0
12	0	0	0	0	0	1	1	0	0	0	1	1	1	1	1	1	0	1	3	4	5	4	3	3	1
13	2	3	4	6	6	7	6	6	3	2	1	2	1	1	1	0	0	0	0	0	0	0	0	0	2
14	0	1	1	0	0	0	0	0	0	0	0	0	6	18	14	15	12	1	0	0	1	0	0	0	3
15	4	20	20	20	12	3	1	3	8	9	13	2	11	18	25	9	17	11	19	26	17	10	5	17	13
16	15	7	8	0	2	3	5	4	1	10	7	19	12	6	6	12	10	7	7	15	6	9	7	11	8
17	13	13	12	18	11	16	20	12	21	15	10	12	15	8	5	2	5	4	12	10	20	9	1	2	11
18	3	0	6	13	8	1	4	3	7	9	5	4	4	2	1	5	3	5	5	12	3	10	3	3	5
19	4	2	3	21	15	4	3	4	8	4	1	10	5	0	1	1	1	0	0	0	2	1	2	4	4
20	1	2	0	1	0	0	0	0	0	1	3	1	6	4	2	9	6	1	1	1	1	12	2	3	2
21	2	0	2	1	2	1	0	6	1	0	0	0	0	0	0	0	0	0	0	0	5	0	3	3	1
22	0	0	1	0	0	0	0	0	0	0	0	0	0	5	7	13	1	19	19	4	11	4	0	29	5
23	52	23	8	1	1	0	1	1	2	2	2	0	0	5	6	5	0	1	0	1	3	1	1	0	5
24	0	3	2	1	8	1	2	0	0	0	0	0	0	0	10	2	1	0	2	4	2	10	11	1	3
25	0	2	5	0	1	2	0	1	1	1	3	0	0	0	3	8	6	8	4	1	2	10	9	8	3
26	6	4	5	5	13	13	11	13	8	14	6	11	11	2	4	1	0	1	1	3	1	0	1	0	6
27	0	2	1	2	2	7	4	6	3	3	5	4	8	2	1	0	0	0	2	12	14	6	4	2	4
28	1	0	0	2	1	1	4	15	9	18	8	16	15	2	8	1	0	4	1	2	0	0	0	0	5
29	0	0	0	0	0	0	0	0	0	0	0	0	0	0	0	0	0	0	0	0	0	0	0	0	0
30	0	0	0	0	0	0	0	0	0	0	D	D	0	0	0	0	0	0	0	0	0	0	0	0	0

MONTHLY STATISTICS:

GEOM		ARITH		<-----PERCENTILE----->					<-----RANGE----->				STN	GEOM	PERCENT	NO. OF TIMES		
MEAN	MEDIAN	MEAN		50	90	95	98	99	1-HR		24-HR		DEVIATION	VALID DATA		ABOVE OBJECTIVE		
5	2	6		2	15	20	35	42	0	-	143	0	-	40	3	100	0	0

- NOTES: 1. FLAGS FOR INVALID DATA :
D : DYNAMIC CALIBRATION
T : TELEMETRY/DATALOGGR FAULT
M : MAINTENANCE OR ANALYZER FAULT
P : POWER FAILURE
2. BRACKETED READINGS EXCEED 1-HR OBJECTIVE 800 OR 24-HR OBJECTIVE 350

THE HONGKONG ELECTRIC COMPANY, LTD.
AIR QUALITY DATA MONTHLY TIME SERIES REPORT

STATION : CHUNG HOM KOK ZONE SUBSTATION
POLLUTANT : NITROGEN DIOXIDE

MONTH: JUNE

YEAR : 2014
UNIT : MICROGRAMS/CUBIC METER

DAY	1	2	3	4	5	6	7	8	9	10	11	12	13	14	15	16	17	18	19	20	21	22	23	24	MEAN
1	24	33	24	27	18	11	9	9	6	9	10	11	19	17	13	15	16	22	86	25	8	21	13	5	19
2	13	16	10	10	8	8	12	11	17	13	5	7	9	14	10	11	10	8	16	24	31	24	10	23	13
3	9	5	11	9	22	11	11	10	11	16	17	9	6	12	14	11	9	14	11	17	23	25	17	30	14
4	20	M	10	12	14	26	14	18	17	18	21	15	14	9	5	6	12	16	16	20	15	6	23	20	15
5	20	7	13	25	20	20	23	13	11	18	12	9	2	4	14	7	7	11	14	14	12	13	19	11	13
6	13	7	22	22	6	8	7	5	13	11	5	6	12	16	44	54	58	46	52	53	45	48	38	32	26
7	27	28	26	9	10	17	14	48	58	50	68	53	48	25	26	15	27	33	25	25	16	11	15	33	29
8	91	93	86	83	75	63	62	66	73	87	95	87	64	67	70	56	88	63	57	44	41	12	9	9	64
9	4	2	4	3	3	3	3	3	6	8	8	7	3	10	8	8	10	18	13	16	14	11	10	12	8
10	7	4	4	3	2	3	5	8	6	7	9	9	8	10	15	15	25	19	23	15	18	15	14	12	11
11	10	5	4	3	2	6	7	11	7	12	8	8	7	5	7	9	11	15	14	11	11	13	11	9	9
12	7	5	5	3	3	4	4	9	11	11	10	10	14	13	18	14	20	10	10	9	12	8	9	10	10
13	5	6	8	9	10	9	13	25	26	21	14	16	11	7	14	15	15	13	10	8	11	4	3	8	12
14	7	11	5	5	5	5	8	16	28	16	20	19	27	37	33	36	38	15	5	11	11	7	16	14	16
15	39	89	85	64	38	29	33	47	57	53	43	33	42	36	45	25	36	28	45	38	22	10	10	21	40
16	17	14	16	6	10	12	17	22	15	30	24	30	21	18	12	14	17	16	17	27	28	22	23	21	19
17	23	25	15	18	12	21	27	21	24	18	14	15	19	14	11	8	14	15	24	26	32	15	7	9	18
18	10	M	15	18	13	4	10	16	15	12	9	10	8	6	7	9	9	15	17	29	16	26	10	16	13
19	15	14	7	21	21	17	11	14	15	12	8	19	10	8	11	10	10	15	14	14	11	8	9	16	13
20	5	8	9	7	5	1	6	3	14	11	17	11	24	18	18	25	16	14	13	15	12	32	10	10	13
21	7	6	5	6	6	6	11	19	10	12	21	13	25	16	14	13	14	11	11	15	23	11	13	17	13
22	11	12	13	13	16	10	10	15	23	22	25	14	15	18	23	29	19	41	33	23	32	18	23	45	21
23	58	27	16	9	8	6	11	17	16	13	16	12	11	11	15	18	12	14	15	17	16	10	6	6	15
24	9	10	12	10	15	7	7	6	13	12	10	12	10	6	16	12	10	14	13	24	22	26	24	11	13
25	10	9	15	5	9	14	5	8	9	12	17	6	8	9	23	25	22	23	33	21	18	21	21	24	15
26	21	11	15	17	23	18	22	20	14	15	12	13	15	10	13	10	13	16	16	20	17	10	12	15	15
27	10	11	10	11	11	19	17	14	10	10	16	10	14	13	10	9	9	15	17	31	27	22	17	14	14
28	14	7	5	11	10	10	11	18	14	17	12	19	15	7	12	8	8	12	13	17	14	8	6	10	12
29	10	8	6	7	6	4	5	8	9	7	7	8	6	5	5	6	8	13	13	14	10	5	2	11	8
30	9	5	3	8	4	6	14	13	9	8	D	D	13	2	0	0	0	1	3	0	5	3	1	4	5

MONTHLY STATISTICS:

GEOM		ARITH	<-----PERCENTILE----->					<-----RANGE----->				STN GEOM	PERCENT	NO. OF TIMES			
MEAN	MEDIAN	MEAN	50	90	95	98	99	1-HR		24-HR		DEVIATION	VALID DATA	1-HR	24-HR		
13	13	17	13	31	48	68	86	0	-	95	5	-	64	2	99	0	0

- NOTES: 1. FLAGS FOR INVALID DATA :
D : DYNAMIC CALIBRATION
T : TELEMETRY/DATALOGGR FAULT
M : MAINTENANCE OR ANALYZER FAULT
P : POWER FAILURE
2. BRACKETED READINGS EXCEED 1-HR OBJECTIVE 300 OR 24-HR OBJECTIVE 150

THE HONGKONG ELECTRIC COMPANY, LTD.
AIR QUALITY DATA MONTHLY TIME SERIES REPORT

STATION : VICTORIA ROAD SUBSTATION
POLLUTANT : SULPHUR DIOXIDE

MONTH:APRIL

YEAR : 2014
UNIT : MICROGRAMS/CUBIC METER

DAY	1	2	3	4	5	6	7	8	9	10	11	12	13	14	15	16	17	18	19	20	21	22	23	24	MEAN
1	2	2	3	4	4	4	3	3	3	2	2	1	1	0	1	1	1	1	0	0	0	0	0	0	2
2	0	0	0	0	0	0	0	0	0	0	0	0	0	0	0	0	0	0	0	0	0	0	0	0	0
3	0	0	0	0	0	0	0	0	0	1	1	1	1	1	1	1	0	0	0	0	0	0	1	1	1
4	1	1	1	2	1	1	1	1	1	1	1	0	0	0	0	0	0	0	0	0	0	0	0	0	1
5	0	0	0	0	0	0	0	0	0	0	2	1	0	0	0	1	0	0	0	0	0	0	0	0	0
6	0	0	0	0	0	0	0	0	0	0	0	0	0	0	0	0	0	0	0	0	0	0	0	0	0
7	0	0	0	0	0	0	0	0	0	0	0	0	0	0	0	0	0	0	0	0	0	0	0	0	0
8	0	0	0	0	0	0	0	0	0	0	0	0	0	0	0	1	1	2	3	3	4	4	3	4	1
9	4	3	3	3	4	4	3	3	4	6	5	3	4	3	1	1	1	1	0	0	0	0	0	0	2
10	0	0	0	0	0	0	0	0	0	0	0	0	0	0	0	0	0	0	0	0	0	0	0	0	0
11	0	0	0	1	0	0	0	0	0	0	0	0	0	1	0	0	0	0	0	0	0	0	0	0	0
12	0	0	0	0	0	0	1	1	4	4	5	2	1	0	2	1	1	1	0	0	0	0	0	1	1
13	1	1	1	1	1	1	2	3	3	4	6	9	7	5	4	5	2	2	1	1	1	1	1	1	3
14	0	0	1	1	1	0	1	2	4	1	0	0	0	0	0	0	0	0	0	0	0	0	0	0	0
15	0	0	0	0	0	0	0	0	0	0	D	D	D	1	1	0	1	1	0	0	0	0	0	0	0
16	0	0	0	0	0	0	0	0	0	0	0	0	0	0	0	M	1	1	0	0	0	0	0	0	0
17	0	1	1	1	1	2	2	3	7	9	2	1	1	0	0	0	1	1	0	0	0	0	0	0	1
18	0	0	0	0	0	0	0	1	1	1	3	4	4	2	1	1	1	1	0	0	0	0	0	0	1
19	0	0	0	0	0	0	0	0	2	1	0	0	0	0	0	0	0	0	0	0	0	0	0	1	0
20	1	1	1	2	1	1	1	2	5	9	5	4	4	6	4	2	3	3	2	4	5	5	4	3	3
21	3	2	1	1	1	0	0	0	0	0	0	0	0	0	0	0	0	0	0	0	0	0	0	0	0
22	0	0	1	1	1	1	2	3	7	7	2	1	1	2	3	4	3	3	5	4	3	5	5	3	3
23	4	3	3	2	1	0	0	0	0	0	0	0	0	0	0	0	0	0	0	0	0	0	0	0	1
24	0	0	0	0	0	0	0	0	0	0	0	0	0	0	0	0	0	0	0	0	0	0	0	0	0
25	0	0	0	0	0	0	0	0	0	0	0	0	0	0	0	0	0	1	0	0	0	0	0	0	0
26	0	0	0	0	0	0	0	0	0	0	0	0	0	0	0	0	0	0	0	1	1	1	1	2	0
27	2	2	2	3	3	3	3	3	5	11	7	4	5	5	4	3	3	4	2	2	2	2	2	1	3
28	2	2	2	3	2	1	1	1	1	2	3	4	3	8	3	3	1	1	0	0	0	0	0	0	2
29	1	1	1	1	1	0	0	1	1	1	0	0	0	0	0	0	0	0	0	0	0	0	0	1	0
30	0	0	0	0	0	0	0	0	0	1	2	3	6	4	3	5	3	2	1	1	1	1	1	0	1

MONTHLY STATISTICS:

GEOM		ARITH		<-----PERCENTILE----->					<-----RANGE----->				STN	GEOM	PERCENT	NO. OF TIMES		
MEAN	MEDIAN	MEAN		50	90	95	98	99	1-HR		24-HR		DEVIATION		VALID DATA	1-HR	24-HR	
2	0	1		0	3	4	5	7	0	-	11	0	-	3	2	99	0	0

- NOTES: 1. FLAGS FOR INVALID DATA :
D : DYNAMIC CALIBRATION
T : TELEMETRY/DATALOGGR/ANALYZER FAULT
M : MAINTENANCE OR MACHINE SHUTDOWN
P : POWER FAILURE
2. BRACKETED READINGS EXCEED 1-HR OBJECTIVE 800 OR 24-HR OBJECTIVE 350

THE HONGKONG ELECTRIC COMPANY, LTD.
AIR QUALITY DATA MONTHLY TIME SERIES REPORT

STATION : VICTORIA ROAD SUBSTATION
POLLUTANT : NITROGEN DIOXIDE

MONTH:APRIL

YEAR : 2014
UNIT : MICROGRAMS/CUBIC METER

DAY	1	2	3	4	5	6	7	8	9	10	11	12	13	14	15	16	17	18	19	20	21	22	23	24	MEAN
1	15	14	11	13	11	11	11	14	16	20	13	12	15	7	6	12	15	11	9	7	6	1	1	1	11
2	0	1	0	0	0	0	0	2	6	8	11	14	20	19	14	10	20	14	15	15	11	2	0	1	8
3	0	0	0	0	0	0	0	4	9	8	11	15	17	15	16	13	8	9	9	11	12	13	13	10	8
4	10	3	7	16	9	3	3	8	7	3	1	0	0	0	0	0	1	2	2	1	0	0	0	1	3
5	0	0	0	0	0	0	0	0	0	2	9	7	5	0	1	6	1	3	4	1	1	0	0	1	2
6	0	0	0	0	0	0	0	0	0	0	0	0	0	0	0	0	0	0	0	0	0	0	0	0	0
7	0	0	0	0	0	0	0	0	0	0	0	0	0	0	3	4	7	6	3	1	0	0	0	1	1
8	0	0	0	0	0	0	4	7	6	10	12	14	16	12	15	16	18	20	21	19	15	15	12	12	10
9	12	M	6	8	8	8	6	5	8	11	10	11	9	6	3	2	2	9	10	2	2	2	0	0	6
10	0	0	0	0	0	0	0	0	0	0	0	0	0	0	0	0	0	0	0	0	0	0	0	0	0
11	0	0	0	2	0	0	0	1	1	0	0	2	1	1	0	0	0	0	0	0	0	0	0	0	0
12	0	0	0	0	0	0	0	0	4	9	9	5	1	0	2	1	0	4	5	1	1	1	2	2	2
13	0	0	0	0	0	0	0	0	1	1	4	11	11	9	9	12	7	7	1	3	2	0	0	2	3
14	1	0	0	0	1	0	3	7	6	0	0	0	0	0	0	0	0	0	0	0	0	0	0	0	1
15	0	0	0	0	0	0	0	0	0	0	D	D	D	8	9	15	21	19	15	11	9	7	6	6	6
16	3	2	2	2	2	3	6	10	8	8	8	8	8	7	8	12	14	14	15	14	12	12	10	13	8
17	12	22	19	15	20	23	23	24	24	29	18	14	12	12	15	M	M	20	22	15	15	12	13	11	18
18	15	8	6	6	10	7	10	13	15	12	13	20	21	21	17	14	13	16	16	14	12	8	8	10	13
19	6	6	6	5	4	4	9	10	14	14	13	11	11	9	12	11	15	17	18	23	19	19	15	17	12
20	17	17	16	14	10	8	8	13	16	15	12	10	12	15	14	10	14	19	13	18	18	18	16	16	14
21	13	7	6	7	8	6	8	8	9	9	10	10	10	12	11	12	12	12	12	12	11	9	11	12	10
22	12	10	17	19	12	14	17	19	22	21	18	15	13	14	23	M	M	17	26	22	21	24	23	20	18
23	23	M	18	13	7	7	8	10	10	11	11	10	10	10	10	10	10	11	10	10	10	10	10	11	11
24	8	6	6	6	5	7	7	10	10	10	10	10	11	10	10	11	11	11	11	10	10	8	8	9	9
25	6	4	4	4	4	4	6	8	9	10	10	9	9	10	9	M	M	25	17	13	22	10	10	12	10
26	10	9	7	7	6	6	8	9	10	10	11	11	11	17	18	18	16	17	25	28	25	30	24	33	15
27	31	32	31	32	29	27	22	22	25	32	29	31	36	44	37	36	34	43	34	34	37	37	35	25	32
28	30	27	22	23	18	13	13	21	24	27	25	30	29	40	28	24	17	18	21	19	22	25	26	28	24
29	29	20	20	14	8	8	13	17	20	22	16	16	17	16	17	19	19	17	16	14	12	11	11	14	16
30	11	9	8	8	8	8	10	16	17	22	30	44	52	33	27	35	30	33	16	16	12	12	8	13	20

MONTHLY STATISTICS:

GEOM		ARITH	<-----PERCENTILE----->					<-----RANGE----->					STN GEOM	PERCENT	NO. OF TIMES		
MEAN	MEDIAN	MEAN	50	90	95	98	99	1-HR	24-HR	STN GEOM	PERCENT	ABOVE OBJECTIVE					
10	9	10	9	22	28	34	37	0	-	52	0	-	32	2	98	0	0

- NOTES: 1. FLAGS FOR INVALID DATA :
D : DYNAMIC CALIBRATION
T : TELEMETRY/DATALOGGR/ANALYZER FAULT
M : MAINTENANCE OR MACHINE SHUTDOWN
P : POWER FAILURE
2. BRACKETED READINGS EXCEED 1-HR OBJECTIVE 300 OR 24-HR OBJECTIVE 150

THE HONGKONG ELECTRIC COMPANY, LTD.
AIR QUALITY DATA MONTHLY TIME SERIES REPORT

STATION : VICTORIA ROAD SUBSTATION
POLLUTANT : SULPHUR DIOXIDE

MONTH: MAY

YEAR : 2014
UNIT : MICROGRAMS/CUBIC METER

DAY	1	2	3	4	5	6	7	8	9	10	11	12	13	14	15	16	17	18	19	20	21	22	23	24	MEAN
1	0	0	0	0	0	0	0	0	0	0	0	1	2	3	1	0	0	0	0	0	0	0	0	0	0
2	0	0	0	0	0	0	0	0	0	0	0	0	0	0	0	0	0	0	0	0	0	0	0	0	0
3	0	0	0	0	0	0	0	0	0	0	0	0	0	0	0	0	0	0	0	0	0	0	0	0	0
4	0	0	0	0	0	0	0	0	0	0	0	0	0	0	0	0	0	1	1	3	4	3	2	3	1
5	3	2	3	1	0	0	1	1	2	3	3	1	0	0	0	0	0	0	0	0	0	0	0	0	1
6	0	0	0	0	0	0	0	0	0	0	0	0	0	0	0	0	0	0	0	0	0	0	0	0	0
7	0	0	0	0	0	0	0	0	0	0	0	0	0	0	0	0	2	1	1	1	0	0	1	1	0
8	0	0	0	0	0	1	1	3	4	4	4	3	1	0	0	0	0	0	0	0	0	0	0	0	1
9	0	0	0	0	0	0	0	0	0	0	0	4	2	1	0	0	0	0	0	0	0	0	0	0	0
10	0	0	0	0	0	0	0	0	0	0	M	0	1	1	0	0	1	0	1	1	1	1	1	1	0
11	1	0	0	1	1	1	1	1	0	1	1	1	1	1	1	1	1	1	0	0	0	0	0	0	1
12	0	0	0	0	0	0	0	0	0	1	1	1	1	1	1	2	2	2	3	1	1	1	1	1	1
13	1	1	1	0	0	1	1	1	1	1	1	0	0	0	0	0	0	0	0	0	0	0	0	2	0
14	1	1	1	1	1	1	1	1	1	2	1	1	1	1	1	1	1	1	1	1	1	1	1	1	1
15	1	0	1	1	1	1	1	1	1	1	1	1	1	1	2	2	2	2	1	2	2	1	1	1	1
16	2	2	1	1	2	1	2	3	2	3	2	2	1	1	0	1	1	1	0	1	1	1	2	2	1
17	2	1	1	1	1	1	1	1	1	2	2	2	2	2	2	2	1	1	2	1	1	1	1	1	1
18	2	2	2	1	1	1	1	1	2	2	2	2	1	2	1	1	2	1	1	1	0	1	1	2	1
19	2	3	2	2	1	1	1	1	1	1	2	3	2	3	3	2	1	1	1	2	1	0	0	1	2
20	1	1	1	1	1	1	1	0	1	1	1	1	1	1	3	2	0	1	1	1	1	1	2	1	1
21	1	1	1	0	0	0	0	0	0	1	0	0	0	1	1	2	0	0	0	1	0	0	1	1	0
22	1	0	0	0	0	0	0	0	0	1	0	0	0	1	0	0	0	1	1	0	1	2	2	2	1
23	2	2	1	1	1	0	0	1	1	1	1	0	0	1	1	1	2	1	1	1	1	1	0	0	1
24	0	0	0	0	0	0	0	0	0	0	0	0	0	0	0	2	3	3	2	2	1	0	0	1	1
25	0	1	2	2	2	2	2	2	1	1	2	2	2	1	1	2	1	1	1	1	1	2	0	1	1
26	1	1	0	1	1	0	0	0	1	2	1	1	1	1	1	1	1	1	0	0	1	0	2	1	1
27	0	1	1	0	0	0	1	1	2	3	3	6	3	4	2	4	1	1	1	0	0	1	0	1	2
28	1	2	1	1	0	1	3	3	4	2	2	1	2	2	2	0	1	1	0	1	1	1	2	1	1
29	1	1	3	2	1	1	3	1	1	1	2	2	1	1	0	2	1	2	1	1	1	1	1	2	1
30	1	1	1	1	1	2	1	2	3	3	5	2	2	2	3	1	1	2	1	1	1	2	3	3	2
31	2	1	1	2	1	1	2	1	2	3	3	4	2	2	3	1	0	0	2	2	2	2	2	3	2

MONTHLY STATISTICS:

GEOM		ARITH		<-----PERCENTILE----->					<-----RANGE----->				STN	GEOM	PERCENT	NO. OF TIMES		
MEAN	MEDIAN	MEAN		50	90	95	98	99	1-HR		24-HR		DEVIATION	VALID DATA		ABOVE OBJECTIVE		
																1-HR	24-HR	
1	1	1		1	2	3	3	4	0	-	6	0	-	2	2	100	0	0

- NOTES: 1. FLAGS FOR INVALID DATA :
D : DYNAMIC CALIBRATION
T : TELEMETRY/DATALOGGR FAULT
M : MAINTENANCE OR ANALYZER FAULT
P : POWER FAILURE
2. BRACKETED READINGS EXCEED 1-HR OBJECTIVE 800 OR 24-HR OBJECTIVE 350

THE HONGKONG ELECTRIC COMPANY, LTD.
AIR QUALITY DATA MONTHLY TIME SERIES REPORT

STATION : VICTORIA ROAD SUBSTATION
POLLUTANT : NITROGEN DIOXIDE

MONTH: MAY

YEAR : 2014
UNIT : MICROGRAMS/CUBIC METER

DAY	1	2	3	4	5	6	7	8	9	10	11	12	13	14	15	16	17	18	19	20	21	22	23	24	MEAN
1	7	3	2	1	0	3	4	5	8	10	16	14	17	22	10	10	9	7	7	6	4	3	3	5	7
2	2	1	0	0	0	0	2	4	8	9	6	4	5	7	9	14	12	9	10	7	6	4	4	5	5
3	1	0	0	0	0	0	1	1	3	6	6	4	4	3	4	4	4	4	4	3	2	1	2	4	3
4	2	1	0	0	0	0	1	2	2	2	2	2	2	3	3	4	6	18	23	35	37	31	28	32	10
5	27	22	20	11	4	9	9	17	23	29	29	25	14	10	7	7	7	8	8	9	10	7	4	7	13
6	4	2	2	0	0	1	2	3	4	3	5	7	6	6	8	7	7	8	7	7	5	4	4	5	4
7	1	M	1	0	0	0	4	10	9	15	18	18	19	23	25	26	29	28	28	22	19	19	27	24	16
8	7	4	3	6	7	17	19	21	24	24	23	M	13	10	8	8	9	8	9	7	5	5	6	15	11
9	12	10	12	12	13	12	14	18	25	23	M	M	3	2	0	0	0	0	1	0	0	0	1	1	7
10	0	0	0	0	0	0	0	0	0	0	M	24	22	21	18	20	23	22	22	19	18	16	15	15	11
11	15	13	11	10	10	10	12	12	14	20	20	17	17	16	20	17	18	16	16	18	16	14	16	13	15
12	14	11	10	11	12	12	20	24	26	26	21	20	15	17	21	25	24	29	34	27	20	24	25	20	20
13	17	13	11	12	16	13	14	15	17	19	16	13	11	13	12	12	13	15	22	20	21	20	20	16	15
14	13	12	10	9	9	10	11	12	12	13	12	10	13	10	12	14	13	13	13	12	14	14	11	11	12
15	10	12	12	8	9	12	14	13	16	16	12	11	12	10	17	14	16	13	15	14	15	16	17	15	13
16	17	12	12	12	13	13	17	17	16	18	16	13	10	11	11	13	15	18	19	17	18	18	19	24	15
17	20	14	13	13	16	16	18	20	21	22	19	16	15	15	16	16	16	17	19	20	20	18	17	17	17
18	19	17	15	14	14	13	15	13	15	15	16	14	15	17	16	13	17	14	17	17	16	18	18	13	15
19	12	12	12	10	6	7	8	8	8	8	9	8	7	8	9	8	9	10	10	11	13	13	13	15	10
20	13	9	9	7	7	6	8	9	11	8	8	9	8	9	15	14	16	24	24	31	27	26	26	16	14
21	18	M	12	12	6	7	10	20	19	19	16	15	13	9	11	12	8	9	9	13	10	11	14	14	12
22	9	7	5	6	6	5	7	7	8	12	7	7	6	6	7	8	8	11	12	12	13	14	12	13	9
23	13	12	10	7	7	6	8	10	10	10	11	10	15	21	15	17	20	18	15	16	15	14	8	8	12
24	6	5	5	5	4	5	8	8	9	9	9	6	7	7	7	11	11	14	12	13	13	12	12	12	9
25	10	10	12	10	9	11	12	10	9	6	8	10	10	9	9	11	8	9	12	12	9	11	6	10	10
26	7	8	8	6	4	3	6	8	7	7	6	7	9	10	11	9	9	8	8	8	9	8	10	8	8
27	6	7	6	4	5	5	8	10	11	12	13	14	19	17	12	13	8	12	13	11	8	9	6	11	10
28	12	10	8	6	6	7	10	12	10	9	10	8	9	10	8	7	8	9	9	9	11	9	15	8	9
29	9	8	11	9	9	6	13	12	12	8	10	8	8	7	6	8	7	9	13	13	11	8	12	13	10
30	8	8	9	8	6	11	10	10	8	11	12	9	10	7	8	8	9	12	11	13	14	14	15	13	10
31	12	6	7	9	5	6	11	9	10	10	7	8	8	6	6	6	4	6	10	11	13	14	13	14	9

MONTHLY STATISTICS:

GEOM		ARITH		<-----PERCENTILE----->					<-----RANGE----->				STN GEOM	PERCENT	NO. OF TIMES		
MEAN	MEDIAN	MEAN	50	90	95	98	99	1-HR	24-HR	24-HR	24-HR	DEVIATION	VALID DATA	1-HR	24-HR		
10	10	11	10	20	23	27	29	0	-	37	3	-	20	2	99	0	0

- NOTES: 1. FLAGS FOR INVALID DATA :
D : DYNAMIC CALIBRATION
T : TELEMETRY/DATALOGGR FAULT
M : MAINTENANCE OR ANALYZER FAULT
P : POWER FAILURE
2. BRACKETED READINGS EXCEED 1-HR OBJECTIVE 300 OR 24-HR OBJECTIVE 150

THE HONGKONG ELECTRIC COMPANY, LTD.
AIR QUALITY DATA MONTHLY TIME SERIES REPORT

STATION : VICTORIA ROAD SUBSTATION
POLLUTANT : SULPHUR DIOXIDE

MONTH: JUNE

YEAR : 2014
UNIT : MICROGRAMS/CUBIC METER

DAY	1	2	3	4	5	6	7	8	9	10	11	12	13	14	15	16	17	18	19	20	21	22	23	24	MEAN
1	3	1	1	1	2	1	1	1	1	1	2	1	1	2	2	2	1	3	2	1	1	2	2	1	2
2	2	1	1	1	0	1	0	1	1	1	1	1	2	1	0	0	0	1	0	2	1	1	1	2	1
3	1	0	0	0	2	3	1	1	1	1	2	1	1	2	2	2	1	1	0	1	1	1	0	2	1
4	1	1	0	0	1	1	1	0	1	2	0	1	1	1	1	1	1	1	1	1	1	1	1	1	1
5	1	0	1	2	1	2	1	2	3	1	1	2	1	2	3	3	2	1	1	1	1	1	2	1	2
6	0	0	2	1	0	1	2	1	1	2	1	1	1	1	2	2	2	4	4	4	6	4	3	3	2
7	2	2	1	1	1	0	0	1	0	1	1	0	7	2	1	1	2	2	1	0	0	0	0	2	1
8	1	4	2	1	2	3	3	4	5	5	7	6	8	7	6	8	7	7	5	6	5	3	0	1	4
9	0	0	0	0	0	0	0	0	1	1	1	1	0	1	1	1	0	1	0	0	0	1	0	0	0
10	0	0	0	0	0	0	0	0	0	0	0	0	0	0	0	0	1	0	1	0	0	1	0	1	0
11	1	0	0	0	0	0	1	0	0	0	0	0	0	0	0	0	0	0	0	1	1	1	1	0	0
12	0	0	0	0	0	0	0	0	1	0	0	1	0	1	1	1	3	6	3	1	1	1	1	1	1
13	1	1	1	1	2	2	2	1	3	2	1	1	1	1	0	0	0	0	0	0	0	0	0	0	1
14	0	0	0	0	0	0	1	1	2	2	3	2	2	5	2	2	2	1	0	0	0	0	0	4	1
15	4	4	4	2	3	3	2	1	1	1	1	1	1	2	4	2	2	2	2	2	2	1	1	1	2
16	0	1	1	0	0	0	0	1	1	1	1	2	2	1	1	1	0	1	1	0	1	1	0	1	1
17	1	0	0	0	1	1	0	1	1	1	1	2	1	1	M	0	0	0	0	1	1	0	0	1	1
18	1	1	1	1	1	0	1	1	1	1	1	1	1	2	1	1	1	2	1	1	1	1	1	1	1
19	1	1	1	1	1	1	1	1	1	2	1	1	0	1	2	1	2	1	1	0	1	1	1	1	1
20	0	0	1	1	0	0	0	0	0	0	1	1	1	1	1	1	1	0	1	1	1	1	1	2	1
21	1	1	0	1	1	0	1	1	0	0	0	1	1	1	1	0	0	0	0	0	1	1	1	0	1
22	0	0	0	0	0	0	0	0	0	0	0	0	0	1	1	1	4	2	0	1	1	1	1	2	1
23	2	2	1	1	0	0	0	1	1	1	0	1	1	1	1	1	1	1	1	1	1	1	1	0	1
24	0	0	1	0	0	0	0	0	1	1	1	1	1	1	1	2	1	1	1	1	1	2	1	1	1
25	1	1	2	1	1	1	1	1	2	1	1	1	1	1	1	1	1	0	1	1	1	2	1	1	1
26	1	2	1	1	1	1	1	1	2	2	2	4	3	1	1	2	2	1	2	2	2	2	1	1	2
27	1	1	2	1	1	2	1	1	1	2	2	5	3	2	1	1	0	2	1	1	1	2	3	2	2
28	1	1	1	2	3	1	1	3	5	11	8	6	7	4	7	5	3	5	3	3	2	1	1	1	4
29	1	1	1	1	0	0	0	1	1	2	0	1	0	0	0	0	0	0	0	0	0	0	0	0	0
30	0	0	0	0	0	0	0	0	0	0	0	0	0	0	1	1	2	2	0	0	0	0	0	0	0

MONTHLY STATISTICS:

GEOM		ARITH		<-----PERCENTILE----->					<-----RANGE----->				STN	GEOM	PERCENT	NO. OF TIMES		
MEAN	MEDIAN	MEAN		50	90	95	98	99	1-HR		24-HR		DEVIATION	VALID DATA		ABOVE OBJECTIVE		
1	1	1		1	2	4	6	7	0	-	11	0	-	4	2	100	0	0

- NOTES: 1. FLAGS FOR INVALID DATA :
D : DYNAMIC CALIBRATION
T : TELEMETRY/DATALOGGR FAULT
M : MAINTENANCE OR ANALYZER FAULT
P : POWER FAILURE
2. BRACKETED READINGS EXCEED 1-HR OBJECTIVE 800 OR 24-HR OBJECTIVE 350

THE HONGKONG ELECTRIC COMPANY, LTD.
AIR QUALITY DATA MONTHLY TIME SERIES REPORT

STATION : VICTORIA ROAD SUBSTATION
POLLUTANT : NITROGEN DIOXIDE

MONTH: JUNE

YEAR : 2014
UNIT : MICROGRAMS/CUBIC METER

DAY	1	2	3	4	5	6	7	8	9	10	11	12	13	14	15	16	17	18	19	20	21	22	23	24	MEAN
1	15	10	8	8	8	8	9	9	6	6	7	6	5	7	8	8	5	11	11	9	7	11	10	7	8
2	9	7	5	5	4	5	5	5	7	6	6	6	6	4	4	5	4	6	5	10	8	8	6	9	6
3	6	4	3	5	10	11	9	10	11	11	11	9	9	8	7	8	8	9	10	11	11	12	8	12	9
4	9	M	5	4	5	5	6	7	7	7	4	4	4	5	5	5	6	7	8	10	8	7	11	9	6
5	9	6	7	10	8	11	11	9	11	8	8	10	11	15	16	14	13	11	12	14	12	13	15	9	11
6	7	6	10	6	2	6	12	13	11	14	12	12	12	11	19	23	23	33	30	33	35	30	24	28	17
7	25	20	17	32	22	11	21	20	21	25	19	21	28	21	16	13	12	13	11	15	14	21	16	29	19
8	26	27	18	17	24	24	25	27	26	27	38	40	45	38	36	37	33	35	30	30	27	19	12	11	28
9	6	5	4	3	3	3	5	10	14	19	17	14	11	10	9	8	10	9	9	9	8	7	7	8	9
10	7	6	5	5	4	5	7	10	12	12	11	11	11	11	12	14	15	17	20	14	13	12	11	9	11
11	8	7	6	5	5	5	8	10	10	12	10	7	8	8	9	9	10	12	14	12	11	10	8	9	9
12	7	7	6	5	5	6	8	10	12	11	12	12	13	16	15	16	30	37	42	34	22	15	12	10	15
13	12	11	8	8	21	17	23	28	44	35	21	18	17	17	18	22	23	22	23	17	15	12	11	15	19
14	12	8	7	8	7	11	18	28	25	28	31	26	25	31	20	20	29	25	24	21	26	21	15	43	21
15	39	30	30	21	22	28	27	23	23	18	17	15	14	16	22	14	19	17	20	23	19	19	15	11	21
16	9	7	9	4	3	7	8	11	10	10	11	11	11	9	6	6	7	8	8	9	12	9	8	11	9
17	8	7	4	5	7	9	8	11	9	13	10	11	10	10	M	12	13	10	8	14	13	12	9	12	10
18	9	M	7	8	12	6	12	13	13	11	15	14	13	12	8	8	8	10	10	11	12	12	16	8	11
19	11	5	5	7	6	6	12	15	8	8	9	9	4	5	6	7	11	10	15	18	17	10	8	12	9
20	7	6	6	8	5	6	8	13	16	16	18	16	13	13	11	15	14	14	19	17	15	17	13	15	13
21	10	9	9	9	11	10	16	15	14	16	15	23	29	20	18	15	17	16	16	19	20	19	15	11	16
22	6	7	10	6	6	3	9	17	12	17	11	9	12	14	8	12	17	9	10	15	16	17	19	25	12
23	18	12	7	4	3	5	13	18	17	15	14	13	14	15	13	10	15	16	17	16	16	13	13	7	13
24	7	5	13	9	3	5	9	13	13	12	12	13	13	12	15	14	8	8	9	14	14	15	10	10	11
25	8	6	8	6	2	5	5	7	9	11	6	9	6	6	8	8	6	6	12	12	13	14	14	13	8
26	10	8	6	3	4	7	9	8	10	7	3	6	4	2	3	4	5	4	7	10	9	9	6	7	6
27	8	6	9	5	5	7	8	6	2	4	5	6	5	5	2	2	2	4	4	6	11	13	14	13	6
28	8	6	4	7	10	5	7	9	6	9	9	9	10	5	10	11	8	14	11	13	15	11	10	9	9
29	7	7	3	3	3	3	4	5	6	10	9	9	5	4	3	3	3	4	6	8	7	6	5	7	5
30	4	3	2	2	2	3	7	9	7	7	11	10	9	10	10	10	12	13	14	14	12	9	7	5	8

MONTHLY STATISTICS:

GEOM		ARITH		<-----PERCENTILE----->					<-----RANGE----->				STN GEOM	PERCENT	NO. OF TIMES			
MEAN	MEDIAN	MEAN		50	90	95	98	99	1-HR		24-HR		DEVIATION	VALID DATA	1-HR	24-HR		
10	10	12		10	21	28	34	38	2	-	45	5	-	28	2	100	0	0

- NOTES: 1. FLAGS FOR INVALID DATA :
D : DYNAMIC CALIBRATION
T : TELEMETRY/DATALOGGR FAULT
M : MAINTENANCE OR ANALYZER FAULT
P : POWER FAILURE
2. BRACKETED READINGS EXCEED 1-HR OBJECTIVE 300 OR 24-HR OBJECTIVE 150

THE HONGKONG ELECTRIC COMPANY, LTD.
AIR QUALITY DATA MONTHLY TIME SERIES REPORT

STATION : AP LEI CHAU
POLLUTANT : SULPHUR DIOXIDE

MONTH:APRIL

YEAR : 2014
UNIT : MICROGRAMS/CUBIC METER

DAY	1	2	3	4	5	6	7	8	9	10	11	12	13	14	15	16	17	18	19	20	21	22	23	24	MEAN
1	5	6	13	60	49	36	15	25	15	9	3	3	1	4	5	6	7	6	7	4	4	2	2	2	12
2	8	1	2	2	3	2	2	2	2	1	2	0	2	1	1	1	2	1	4	0	1	1	0	1	2
3	3	3	2	1	1	0	0	22	10	6	5	1	1	4	8	1	1	1	0	20	28	40	30	9	8
4	3	0	29	57	8	4	3	2	2	5	9	3	1	0	0	0	2	2	3	3	2	4	5	4	6
5	4	3	4	4	3	3	3	3	3	3	12	3	2	3	2	3	4	3	2	5	8	5	6	9	4
6	9	7	6	7	7	7	6	7	6	6	7	6	7	4	2	2	2	2	2	1	1	2	3	0	5
7	0	0	0	0	0	0	0	0	0	0	0	0	0	0	0	0	0	0	0	0	1	1	1	2	0
8	2	2	1	0	1	1	1	0	1	1	1	1	2	1	1	3	28	112	57	53	45	37	42	97	20
9	69	84	26	65	58	80	55	82	100	78	12	18	14	1	1	0	3	8	4	7	6	3	0	1	32
10	1	1	2	1	3	2	1	2	2	2	1	1	1	1	1	2	2	3	1	1	3	2	1	1	2
11	1	1	1	2	1	1	1	2	3	2	2	3	3	3	3	M	7	8	8	8	6	6	5	2	3
12	1	4	7	1	1	0	34	26	3	1	1	0	1	2	8	0	4	14	14	4	6	8	5	2	6
13	25	38	63	81	66	48	67	137	94	75	58	50	45	59	34	45	36	52	28	46	31	28	33	21	53
14	19	12	12	3	6	9	10	26	14	1	0	0	1	1	0	1	1	0	0	1	1	4	4	1	5
15	1	0	2	2	1	0	2	2	2	1	2	3	2	2	2	2	1	0	1	1	0	0	0	1	1
16	1	1	0	1	0	1	1	4	2	3	5	4	4	4	3	4	4	2	1	1	1	1	1	2	2
17	2	1	1	1	1	2	8	81	86	62	2	1	0	2	4	4	5	6	6	3	5	2	2	2	12
18	3	1	2	1	4	1	2	1	3	6	40	43	22	39	16	6	7	9	11	9	5	8	10	3	11
19	3	4	10	3	1	2	0	0	1	2	1	4	6	2	4	3	6	9	7	6	6	9	15	7	5
20	7	10	100	96	77	20	9	10	46	77	22	41	40	51	51	38	29	50	37	29	33	51	33	43	42
21	23	12	4	5	0	0	0	0	0	0	0	0	1	0	0	0	0	0	0	0	0	0	0	2	2
22	1	1	2	1	1	2	1	28	2	9	2	1	3	30	11	28	38	39	71	32	23	55	74	52	21
23	38	12	9	11	7	3	2	3	1	1	1	1	0	1	1	2	1	1	1	0	1	0	1	4	4
24	2	2	1	2	1	3	1	2	2	2	2	2	2	1	1	0	2	1	1	1	2	1	1	0	1
25	0	0	0	0	0	0	0	1	0	1	0	0	0	0	0	0	1	0	0	0	0	0	0	8	0
26	6	5	3	2	3	3	1	2	3	3	3	4	4	2	2	1	2	2	7	22	27	12	8	40	7
27	11	10	31	10	21	16	27	21	54	110	119	46	28	92	54	32	33	48	37	26	56	30	61	24	42
28	12	28	17	29	19	4	2	5	9	11	24	29	36	37	23	9	3	3	4	3	5	5	4	5	14
29	4	6	5	4	5	4	3	2	3	3	1	4	4	4	4	3	2	2	4	2	3	3	3	5	3
30	4	3	3	1	2	2	1	3	2	4	2	3	9	1	2	2	1	1	2	2	1	1	1	2	2

MONTHLY STATISTICS:

GEOM		ARITH		<-----PERCENTILE----->					<-----RANGE----->					STN	GEOM	PERCENT	NO. OF TIMES	
MEAN	MEDIAN	MEAN		50	90	95	98	99	1-HR		24-HR		DEVIATION	VALID DATA		ABOVE OBJECTIVE	1-HR	24-HR
5	3	11		3	37	55	81	96	0	-	137	0	-	53	4	100	0	0

- NOTES: 1. FLAGS FOR INVALID DATA :
D : DYNAMIC CALIBRATION
T : TELEMETRY/DATALOGGR FAULT
M : MAINTENANCE OR ANALYZER FAULT
P : POWER FAILURE
2. BRACKETED READINGS EXCEED 1-HR OBJECTIVE 800 OR 24-HR OBJECTIVE 350

THE HONGKONG ELECTRIC COMPANY, LTD.
AIR QUALITY DATA MONTHLY TIME SERIES REPORT

STATION : AP LEI CHAU
POLLUTANT : NITROGEN DIOXIDE

MONTH:APRIL

YEAR : 2014
UNIT : MICROGRAMS/CUBIC METER

DAY	1	2	3	4	5	6	7	8	9	10	11	12	13	14	15	16	17	18	19	20	21	22	23	24	MEAN
1	61	54	54	59	52	52	45	53	36	21	0	14	4	0	21	33	2	8	5	5	5	5	2	5	25
2	6	3	0	0	0	0	0	3	34	4	8	15	34	9	0	5	14	0	16	14	4	0	0	0	7
3	0	0	0	0	0	0	2	41	37	22	46	33	14	20	24	4	4	2	5	54	64	53	68	76	24
4	49	16	53	74	13	2	5	21	5	0	0	0	0	0	0	0	0	0	1	1	0	0	0	0	10
5	0	0	0	0	0	0	2	3	1	3	11	0	0	0	0	0	0	1	2	0	0	0	0	1	1
6	0	0	0	0	0	0	0	1	1	1	0	1	1	1	0	0	0	0	0	0	0	0	0	0	0
7	0	0	0	0	0	0	0	3	4	3	4	1	0	3	10	15	12	9	3	0	0	0	2	0	3
8	0	0	0	0	0	0	6	18	23	26	26	29	34	43	42	41	67	85	91	92	56	75	73	76	38
9	74	M	62	66	63	67	59	63	62	50	13	12	8	0	0	0	0	0	0	0	0	0	0	0	26
10	0	0	0	0	0	0	0	4	6	5	1	2	0	1	0	0	0	0	0	0	0	0	0	0	1
11	0	0	0	0	0	0	3	10	3	0	0	0	0	0	0	M	M	0	0	5	0	0	0	3	1
12	0	0	1	0	0	2	25	37	10	0	0	0	0	0	2	0	0	8	6	0	0	2	12	0	4
13	16	41	51	57	51	35	45	43	37	34	36	28	17	23	19	32	38	51	52	50	34	34	35	27	37
14	39	32	32	11	30	45	54	31	20	0	0	0	0	0	0	0	0	0	0	0	0	0	0	0	12
15	0	0	0	0	0	0	0	0	0	0	0	0	0	2	1	3	11	3	2	1	0	0	0	0	1
16	0	0	0	0	0	0	1	13	9	3	6	3	1	1	0	0	0	2	1	0	0	0	1	5	2
17	6	3	1	2	2	3	21	70	64	30	0	0	0	0	0	0	0	0	2	0	0	6	12	3	9
18	0	6	0	1	0	0	9	1	0	1	17	8	4	9	5	0	0	1	5	5	1	0	3	6	3
19	1	0	1	0	0	1	0	0	0	0	0	0	0	0	0	0	0	4	2	0	4	4	14	1	1
20	22	27	38	34	34	30	20	27	33	32	6	18	17	24	19	21	23	36	21	30	41	41	37	18	27
21	16	9	0	0	0	0	0	0	0	0	0	0	0	0	0	0	0	1	3	4	0	1	0	1	1
22	5	1	0	0	0	0	5	22	2	14	0	0	0	9	3	9	37	45	50	43	36	63	54	41	18
23	58	M	11	3	0	0	0	0	0	0	0	0	0	0	0	0	0	0	0	0	0	0	0	0	3
24	0	0	0	0	0	0	0	0	1	1	2	1	4	2	8	3	10	1	0	0	2	0	0	0	1
25	0	0	0	0	0	0	0	6	8	8	5	0	0	0	5	2	9	5	18	16	9	0	0	1	4
26	0	0	0	0	0	0	0	1	3	4	7	1	1	10	16	10	10	2	14	65	71	72	51	94	18
27	102	86	72	33	40	53	75	60	48	75	82	55	34	99	81	45	44	77	55	47	92	104	92	64	67
28	34	65	37	54	35	2	18	27	46	53	54	51	46	36	14	5	0	0	0	0	10	9	11	15	26
29	7	31	11	0	0	0	4	10	7	2	6	5	2	0	1	0	0	0	0	0	0	0	0	0	4
30	0	0	0	0	0	0	1	18	14	9	4	0	16	5	3	8	33	39	11	13	8	12	5	4	8

MONTHLY STATISTICS:

GEOM		ARITH		<-----PERCENTILE----->					<-----RANGE----->				STN	GEOM	PERCENT	NO. OF TIMES		
MEAN	MEDIAN	MEAN		50	90	95	98	99	1-HR		24-HR		DEVIATION	VALID	DATA	1-HR	24-HR	
11	1	13		1	49	63	76	90	0	-	104	0	-	67	4	99	0	0

- NOTES: 1. FLAGS FOR INVALID DATA :
D : DYNAMIC CALIBRATION
T : TELEMETRY/DATALOGGR FAULT
M : MAINTENANCE OR ANALYZER FAULT
P : POWER FAILURE

2. BRACKETED READINGS EXCEED 1-HR OBJECTIVE 300 OR 24-HR OBJECTIVE 150
REMARKS: ##: DATA WAS INVALIDATED DUE TO INTERFERENCE FROM UNKNOWN LOCALIZED SOURCES

THE HONGKONG ELECTRIC COMPANY, LTD.
AIR QUALITY DATA MONTHLY TIME SERIES REPORT

STATION : AP LEI CHAU
POLLUTANT : SULPHUR DIOXIDE

MONTH: MAY

YEAR : 2014
UNIT : MICROGRAMS/CUBIC METER

DAY	1	2	3	4	5	6	7	8	9	10	11	12	13	14	15	16	17	18	19	20	21	22	23	24	MEAN
1	1	2	1	1	0	1	0	1	0	0	2	1	3	1	0	0	1	1	1	0	1	1	1	1	1
2	0	1	0	1	2	2	2	2	3	3	2	2	3	2	1	2	1	3	2	2	3	4	3	2	2
3	2	2	3	5	3	4	4	3	4	6	3	6	4	3	3	2	2	1	1	0	1	1	0	0	3
4	1	0	0	0	0	0	0	0	0	0	0	0	0	0	1	1	1	1	0	0	0	0	1	22	1
5	14	27	23	3	2	12	11	13	10	16	24	16	0	1	0	0	1	0	0	0	0	0	0	4	7
6	1	4	4	4	4	7	5	8	4	3	2	2	3	2	2	2	1	2	2	1	3	2	1	1	3
7	0	0	0	0	0	0	0	1	0	1	1	0	1	0	0	0	1	0	0	0	0	0	1	0	0
8	0	0	0	0	0	0	0	0	0	0	1	1	1	0	0	0	0	0	0	0	0	1	0	1	0
9	2	0	1	2	1	0	0	0	1	0	0	0	1	0	1	0	1	0	1	0	1	1	1	1	1
10	1	1	1	3	6	3	2	2	1	1	4	6	8	6	1	9	10	15	10	4	9	5	5	7	5
11	12	5	4	3	3	3	5	2	7	9	16	6	7	8	17	13	7	2	0	1	1	0	1	1	6
12	1	1	3	2	2	11	11	14	13	11	11	18	12	17	10	18	18	37	18	14	21	21	18	29	14
13	44	26	7	12	8	6	10	9	14	11	5	6	8	6	4	11	11	10	12	17	17	24	18	18	13
14	13	12	17	8	12	13	10	7	20	10	5	5	9	10	6	6	14	9	16	9	11	17	10	4	11
15	1	4	7	5	3	5	5	2	17	5	3	5	4	1	7	9	5	4	9	19	11	5	16	34	8
16	40	32	16	29	17	34	35	29	23	25	18	10	4	9	5	7	10	5	8	8	15	28	24	30	19
17	18	8	4	8	16	18	13	12	10	13	13	12	10	9	7	12	5	7	13	5	12	10	14	10	11
18	28	17	10	10	14	5	9	8	15	6	6	7	12	19	9	7	13	10	4	11	16	30	20	31	13
19	25	28	16	11	6	1	8	4	16	4	8	8	5	6	4	8	7	11	21	3	3	0	2	24	10
20	16	15	24	15	15	11	15	14	12	26	11	12	7	4	17	12	1	11	10	24	10	8	9	16	13
21	6	10	19	9	1	3	1	17	11	7	10	7	5	12	22	21	4	10	7	17	9	3	11	13	10
22	8	8	7	3	6	4	2	1	4	4	1	1	1	3	1	D	D	20	13	26	26	54	30	29	11
23	20	17	10	5	9	3	2	3	3	8	7	6	4	0	2	11	11	6	5	3	2	3	1	3	6
24	1	1	3	5	1	2	3	3	3	1	1	1	3	6	3	16	21	34	27	19	20	14	7	6	8
25	5	12	27	12	28	29	26	15	2	5	16	22	38	7	7	20	4	4	10	6	8	11	4	12	14
26	4	10	8	14	10	3	6	12	25	10	9	6	8	6	12	8	4	9	7	9	28	7	6	20	10
27	9	10	10	3	10	16	8	10	5	21	11	M	31	24	8	21	12	8	13	16	14	12	3	6	12
28	6	3	7	0	5	3	23	29	25	17	11	6	3	9	4	1	2	6	3	10	18	8	14	5	9
29	9	6	13	17	15	12	32	5	12	9	6	7	9	5	2	7	4	8	13	9	5	6	19	14	10
30	13	17	13	23	5	16	5	11	12	18	9	2	5	9	12	4	5	20	9	8	10	21	29	13	12
31	14	6	19	42	4	2	32	7	5	0	11	19	14	20	12	5	2	8	10	14	28	31	12	32	15

MONTHLY STATISTICS:

GEOM		ARITH	<-----PERCENTILE----->					<-----RANGE----->					STN GEOM	PERCENT	NO. OF TIMES		
MEAN	MEDIAN	MEAN	50	90	95	98	99	1-HR		24-HR			DEVIATION	VALID DATA	1-HR	24-HR	
-	6	-	6	20	26	31	34	0	-	54	0	-	19	-	100	0	0

- NOTES: 1. FLAGS FOR INVALID DATA :
D : DYNAMIC CALIBRATION
T : TELEMETRY/DATALOGGR FAULT
M : MAINTENANCE OR ANALYZER FAULT
P : POWER FAILURE
2. BRACKETED READINGS EXCEED 1-HR OBJECTIVE 800 OR 24-HR OBJECTIVE 350

THE HONGKONG ELECTRIC COMPANY, LTD.
AIR QUALITY DATA MONTHLY TIME SERIES REPORT

STATION : AP LEI CHAU
 POLLUTANT : NITROGEN DIOXIDE
 MONTH: MAY
 YEAR : 2014
 UNIT : MICROGRAMS/CUBIC METER

DAY	1	2	3	4	5	6	7	8	9	10	11	12	13	14	15	16	17	18	19	20	21	22	23	24	MEAN
1	1	0	1	0	0	0	2	4	8	7	17	3	6	9	0	3	3	3	3	0	0	0	0	0	3
2	0	0	0	0	0	0	0	3	8	2	2	5	1	1	1	4	0	0	1	0	3	0	0	0	1
3	0	0	0	0	0	0	0	1	6	1	0	0	0	0	0	0	0	0	0	0	0	0	0	0	0
4	0	0	0	0	0	0	0	0	0	0	0	0	0	1	3	9	11	27	19	15	22	15	38	69	10
5	44	44	44	25	3	23	34	43	49	53	48	37	10	5	2	1	1	2	1	12	17	6	3	2	21
6	6	0	0	0	0	0	0	0	0	0	4	9	1	3	4	2	2	11	1	3	0	0	0	0	2
7	0	M	0	0	0	0	0	2	6	9	15	21	21	24	28	41	41	44	23	9	10	5	7	0	13
8	1	0	0	0	2	1	15	40	34	17	6	1	1	5	0	0	1	4	0	0	0	0	1	12	6
9	6	5	0	0	0	0	0	0	0	1	7	3	0	4	1	2	0	1	3	0	0	1	1	0	1
10	0	0	0	0	0	0	0	0	0	0	0	0	0	1	0	7	5	7	3	0	0	0	0	0	1
11	1	0	0	0	0	0	0	0	0	0	8	0	1	0	5	3	0	0	0	5	1	1	0	2	1
12	0	0	7	0	0	10	7	3	4	2	2	0	0	0	0	0	4	22	5	9	13	7	12	23	5
13	24	6	0	3	5	0	1	2	2	3	0	0	0	0	0	0	0	0	0	0	2	5	2	5	3
14	1	0	2	0	1	2	1	0	1	1	0	0	0	0	0	0	0	0	0	0	2	3	1	0	1
15	0	1	1	0	0	1	3	2	5	0	1	2	2	0	2	3	2	1	0	6	2	1	6	10	2
16	9	9	1	6	1	12	12	4	1	1	1	0	0	0	0	0	3	1	2	0	4	8	6	5	4
17	1	0	0	0	2	3	1	1	0	1	0	0	0	0	0	0	0	0	1	1	0	1	2	1	1
18	6	1	0	2	1	0	0	0	0	0	0	0	0	3	0	3	3	0	0	1	2	4	2	7	1
19	5	6	2	0	0	0	3	0	1	0	0	0	0	0	0	0	0	0	0	1	23	7	14	3	
20	3	4	7	4	1	0	3	1	0	3	2	1	0	0	2	1	1	26	38	51	43	24	0	1	9
21	0	M	10	9	0	1	3	8	3	6	1	0	0	0	0	M	0	0	0	1	0	0	1	1	2
22	1	0	0	0	1	0	0	0	0	0	0	0	0	1	0	D	D	3	1	4	6	17	9	15	3
23	12	9	3	2	2	0	1	1	0	3	3	3	14	6	6	5	10	1	0	1	1	11	5	4	4
24	0	0	0	0	0	0	0	4	0	0	0	0	0	2	0	3	4	13	7	7	7	3	1	2	2
25	1	7	12	2	10	11	11	2	2	2	6	6	14	2	1	6	0	1	2	1	1	4	1	5	5
26	2	7	5	9	10	1	6	7	14	10	7	7	5	7	10	11	9	10	8	10	17	9	6	13	8
27	1	6	5	0	3	5	3	2	1	11	11	M	36	33	24	31	28	23	27	22	17	16	5	15	14
28	20	14	14	12	14	13	27	19	18	20	26	19	15	16	21	15	14	18	13	20	28	21	24	7	18
29	15	11	17	21	23	16	31	15	17	16	15	15	14	11	9	16	12	14	22	13	7	12	19	16	16
30	12	19	12	22	12	18	9	13	13	23	16	10	13	16	16	18	16	21	13	11	13	24	29	17	16
31	22	13	24	29	9	11	31	17	11	10	15	20	19	22	14	15	13	13	18	24	28	33	18	25	19

MONTHLY STATISTICS:

GEOM		ARITH		<-----PERCENTILE----->					<-----RANGE----->					STN	GEOM	PERCENT	NO. OF TIMES	
MEAN	MEDIAN	MEAN		50	90	95	98	99	1-HR		24-HR		DEVIATION	VALID	DATA	1-HR	24-HR	
5	2	6		2	19	25	38	44	0	-	69	0	-	21	3	99	0	0

- NOTES: 1. FLAGS FOR INVALID DATA :
 D : DYNAMIC CALIBRATION
 T : TELEMETRY/DATALOGGR FAULT
 M : MAINTENANCE OR ANALYZER FAULT
 P : POWER FAILURE
2. BRACKETED READINGS EXCEED 1-HR OBJECTIVE 300 OR 24-HR OBJECTIVE 150

THE HONGKONG ELECTRIC COMPANY, LTD.
AIR QUALITY DATA MONTHLY TIME SERIES REPORT

STATION : AP LEI CHAU
POLLUTANT : SULPHUR DIOXIDE

MONTH: JUNE

YEAR : 2014
UNIT : MICROGRAMS/CUBIC METER

DAY	1	2	3	4	5	6	7	8	9	10	11	12	13	14	15	16	17	18	19	20	21	22	23	24	MEAN	
1	29	11	6	6	3	3	3	1	2	3	2	2	2	4	10	11	5	11	5	13	5	18	12	8	7	
2	8	3	2	3	1	8	3	1	8	3	0	2	5	2	1	1	0	4	4	18	13	6	1	19	5	
3	0	1	0	2	13	7	3	1	5	3	13	6	3	8	6	5	5	1	0	0	21	6	0	16	5	
4	8	11	0	4	16	24	8	10	10	16	5	2	6	4	7	2	7	8	4	5	6	1	11	30	9	
5	5	2	4	12	5	12	1	5	13	2	1	11	1	7	19	6	3	1	4	5	7	20	21	7	7	
6	10	5	30	7	2	5	0	1	1	1	5	5	7	2	7	10	37	25	80	23	22	17	15	23	14	
7	10	9	8	2	5	3	1	51	3	11	6	2	45	9	10	7	14	13	6	7	5	6	4	120	15	
8	113	96	20	14	35	29	26	28	40	47	55	53	49	36	30	33	32	42	44	39	50	14	0	3	39	
9	0	0	0	0	0	0	0	0	1	0	0	0	0	0	0	0	0	0	1	1	0	0	0	0	1	
10	3	1	2	2	0	0	1	1	0	2	2	0	0	1	2	1	1	6	6	8	4	4	4	4	9	3
11	2	1	3	1	1	2	2	0	0	0	0	0	0	0	0	0	0	0	1	4	3	3	3	6	1	
12	1	0	0	0	0	0	0	0	0	0	0	0	0	0	0	0	0	0	0	5	10	8	3	11	2	
13	4	5	3	4	16	15	10	21	16	3	2	1	1	1	1	0	0	0	0	1	3	1	0	6	5	
14	1	1	1	0	1	1	5	6	13	25	M	M	8	19	15	6	6	0	2	3	5	2	2	8	6	
15	23	26	23	14	16	16	14	11	9	2	7	2	4	37	22	6	16	15	18	21	12	4	1	17	14	
16	10	7	5	0	0	3	3	12	1	6	8	4	5	1	4	7	11	16	10	18	19	22	13	24	9	
17	13	10	7	7	7	10	9	9	7	8	5	10	12	10	9	6	10	9	10	11	10	18	10	27	10	
18	21	13	11	10	9	7	12	19	13	9	6	6	11	10	8	11	8	12	15	21	14	13	22	23	13	
19	23	12	8	10	11	12	12	14	16	8	M	24	11	3	10	8	9	7	9	5	10	26	9	10	12	
20	3	2	10	2	2	0	0	0	0	0	4	1	8	1	1	2	0	0	2	2	1	0	1	15	2	
21	3	0	1	0	1	2	2	1	0	0	0	3	0	0	0	0	0	0	0	1	4	1	5	7	1	
22	0	0	0	0	2	0	0	1	0	1	0	0	5	2	6	8	32	7	0	10	20	8	11	56	7	
23	45	51	8	2	0	5	0	3	7	4	0	1	0	6	7	2	5	1	7	2	5	3	8	6	7	
24	4	5	14	7	7	4	0	4	8	3	0	7	4	9	29	14	1	2	7	6	18	18	1	8	8	
25	0	4	14	5	2	4	1	3	2	0	3	3	0	1	5	20	1	16	8	0	3	18	15	18	6	
26	25	10	7	1	15	24	13	6	5	6	6	5	7	0	3	5	11	4	6	12	7	15	15	15	9	
27	19	4	14	5	12	10	22	5	1	6	10	11	6	5	4	0	7	4	3	0	10	18	24	16	9	
28	8	1	0	9	11	6	13	43	14	39	23	10	10	8	8	6	6	5	11	3	8	2	4	6	11	
29	4	1	0	0	0	0	0	0	2	4	0	0	0	0	0	0	0	0	0	0	3	0	0	5	1	
30	0	0	0	0	0	0	0	0	0	0	0	0	0	0	1	2	7	2	1	3	2	1	0	6	1	

MONTHLY STATISTICS:

GEOM		ARITH		<-----PERCENTILE----->					<-----RANGE----->					STN	GEOM	PERCENT	NO. OF TIMES	
MEAN	MEDIAN	MEAN		50	90	95	98	99	1-HR		24-HR		DEVIATION	VALID DATA		ABOVE OBJECTIVE	1-HR	24-HR
6	5	8		5	19	26	44	51	0	-	120	1	-	39	3	100	0	0

- NOTES: 1. FLAGS FOR INVALID DATA :
D : DYNAMIC CALIBRATION
T : TELEMETRY/DATALOGGR FAULT
M : MAINTENANCE OR ANALYZER FAULT
P : POWER FAILURE
2. BRACKETED READINGS EXCEED 1-HR OBJECTIVE 800 OR 24-HR OBJECTIVE 350

THE HONGKONG ELECTRIC COMPANY, LTD.
AIR QUALITY DATA MONTHLY TIME SERIES REPORT

STATION : AP LEI CHAU
POLLUTANT : NITROGEN DIOXIDE

MONTH: JUNE

YEAR : 2014
UNIT : MICROGRAMS/CUBIC METER

DAY	1	2	3	4	5	6	7	8	9	10	11	12	13	14	15	16	17	18	19	20	21	22	23	24	MEAN
1	27	21	12	10	13	11	14	11	10	10	9	11	8	11	17	15	10	18	14	17	11	22	16	15	14
2	18	12	5	12	9	15	16	8	17	15	11	10	12	10	8	9	5	10	12	23	23	16	16	20	13
3	7	9	5	9	19	16	16	13	13	11	21	17	17	18	20	22	19	17	15	12	31	19	14	20	16
4	22	M	13	20	22	24	19	16	20	22	19	13	12	14	17	13	22	20	16	10	14	7	20	20	17
5	6	3	8	14	11	20	15	14	21	10	13	20	7	7	25	10	8	7	14	12	12	15	25	8	13
6	15	16	36	15	6	11	13	20	7	13	19	13	17	13	40	56	71	66	70	68	64	48	31	39	32
7	32	32	46	49	49	47	62	68	26	71	44	52	67	22	16	14	25	24	13	18	25	22	40	87	40
8	90	87	54	45	68	63	66	60	64	74	83	86	77	67	53	48	45	54	54	35	45	20	9	14	57
9	7	6	5	4	5	6	9	15	25	29	20	12	7	6	4	4	4	5	7	5	4	5	4	7	9
10	3	2	3	5	5	6	8	18	15	11	6	7	7	6	5	4	6	8	8	8	6	7	6	12	7
11	5	2	3	2	1	2	5	5	6	6	4	3	2	3	6	10	4	5	6	8	5	5	5	4	4
12	4	4	5	2	2	4	13	12	6	6	8	8	12	9	15	28	29	29	31	22	21	19	13	17	13
13	16	14	14	11	35	30	33	81	65	35	19	15	12	16	17	25	29	37	32	23	10	9	13	20	25
14	21	21	18	16	16	22	52	65	64	82	M	M	51	57	56	54	61	42	39	23	27	42	39	67	43
15	80	70	65	34	42	49	58	52	41	27	28	19	17	37	32	28	44	39	39	32	24	12	18	20	38
16	17	24	16	7	4	17	22	32	23	26	22	22	21	7	3	4	7	10	4	13	20	15	11	19	15
17	15	4	2	4	10	15	14	11	7	8	8	16	15	14	14	10	16	11	11	11	14	19	10	10	11
18	16	M	14	6	7	9	18	19	16	11	13	9	17	16	13	14	15	13	10	17	12	12	19	12	13
19	17	8	4	8	12	9	14	18	17	11	M	15	9	11	23	28	31	25	19	16	9	15	7	9	15
20	8	4	7	8	8	3	13	12	10	8	17	16	14	9	14	11	12	7	17	8	8	9	11	1	10
21	0	0	2	1	2	4	10	8	5	23	9	25	12	4	0	0	1	1	2	5	13	7	10	6	6
22	4	17	18	4	17	1	15	20	19	29	5	4	11	5	17	17	23	14	9	32	43	33	40	39	18
23	37	38	10	5	1	5	7	9	7	9	6	5	3	9	2	1	3	1	10	3	8	7	10	7	8
24	6	5	23	10	8	8	6	5	4	3	0	21	8	8	18	10	11	10	11	13	18	17	4	4	10
25	3	7	9	10	5	9	5	4	4	7	5	10	7	8	13	30	9	24	17	1	5	21	23	15	10
26	22	10	5	2	17	16	22	10	9	8	10	7	13	6	18	30	42	37	41	36	22	24	16	5	18
27	14	3	10	5	17	12	15	11	3	12	14	11	8	14	13	22	30	37	32	36	25	27	32	12	17
28	8	2	2	10	12	8	15	23	10	20	11	8	14	17	22	28	27	27	31	31	19	16	14	11	16
29	8	12	4	1	0	0	2	2	3	7	7	2	0	0	0	1	5	12	9	9	3	0	1	1	4
30	0	0	0	0	0	0	4	1	0	0	0	0	0	0	0	2	7	4	7	2	2	3	0	3	1

MONTHLY STATISTICS:

GEOM		ARITH		<-----PERCENTILE----->					<-----RANGE----->					STN	GEOM	PERCENT	NO. OF TIMES	
MEAN	MEDIAN	MEAN		50	90	95	98	99	1-HR		24-HR		DEVIATION	VALID	DATA	1-HR	24-HR	
12	12	17		12	39	55	68	80	0	-	90	1	-	57	2	99	0	0

- NOTES: 1. FLAGS FOR INVALID DATA :
D : DYNAMIC CALIBRATION
T : TELEMETRY/DATALOGGR FAULT
M : MAINTENANCE OR ANALYZER FAULT
P : POWER FAILURE
2. BRACKETED READINGS EXCEED 1-HR OBJECTIVE 300 OR 24-HR OBJECTIVE 150

THE HONGKONG ELECTRIC COMPANY, LTD.
AIR QUALITY DATA MONTHLY TIME SERIES REPORT

STATION : CHEUNG CHAU
POLLUTANT : SULPHUR DIOXIDE

MONTH: APRIL

YEAR : 2014
UNIT : MICROGRAMS/CUBIC METER

DAY	1	2	3	4	5	6	7	8	9	10	11	12	13	14	15	16	17	18	19	20	21	22	23	24	MEAN
1	7	13	8	15	11	13	13	9	8	8	9	8	6	12	9	10	6	7	7	5	5	10	8	8	9
2	6	5	5	4	5	4	6	4	4	6	8	7	3	6	6	4	3	2	2	3	3	2	2	2	4
3	2	5	4	3	2	1	2	4	11	10	9	9	11	13	11	6	4	3	4	5	6	9	14	10	7
4	9	16	23	10	9	9	12	15	21	20	10	12	8	6	7	11	5	7	5	6	5	7	8	7	10
5	7	5	5	4	5	5	6	8	11	10	10	9	9	9	7	7	6	10	8	9	7	9	13	8	8
6	7	8	7	6	5	9	7	8	6	9	10	5	4	3	2	2	1	2	2	2	2	1	2	3	5
7	2	2	2	2	2	2	2	3	4	5	7	7	6	6	6	5	2	4	5	5	5	5	5	4	4
8	5	4	4	3	3	3	4	3	6	7	6	4	2	3	6	10	12	13	9	10	17	15	18	21	8
9	21	23	22	18	18	13	10	17	10	20	21	8	7	8	6	15	23	20	19	12	7	4	4	3	14
10	3	2	3	4	4	5	3	3	5	5	4	6	4	2	3	2	2	2	3	2	4	4	6	4	4
11	6	6	3	4	4	6	6	5	5	4	5	4	4	7	6	5	6	5	3	7	4	7	4	8	5
12	7	7	8	10	8	6	6	10	11	20	11	5	3	6	26	31	30	27	30	24	17	14	10	11	14
13	11	10	8	6	6	5	4	5	6	11	13	18	8	5	4	5	5	6	6	5	4	3	5	6	7
14	6	5	6	7	6	5	5	6	21	11	8	5	6	5	4	4	4	3	2	4	3	4	4	3	6
15	2	3	4	4	3	3	4	5	4	4	4	5	4	5	4	4	3	3	4	4	3	2	3	2	4
16	2	1	2	3	2	3	4	5	5	5	5	6	6	7	7	6	6	8	7	6	4	3	4	6	5
17	5	7	12	11	7	10	10	13	11	12	12	9	15	14	24	25	17	23	14	11	11	11	12	8	13
18	9	7	5	5	11	12	9	9	11	19	16	14	15	19	41	34	26	13	14	11	9	13	13	12	14
19	12	11	10	8	7	11	16	19	15	11	6	7	15	13	12	10	18	15	15	13	13	11	16	17	13
20	15	12	9	7	6	7	6	12	19	22	21	12	8	13	7	9	8	7	5	5	7	7	6	9	10
21	7	8	11	17	12	6	6	4	3	3	2	4	3	3	3	4	3	3	2	4	2	4	3	6	5
22	5	4	5	6	8	11	7	9	11	12	9	5	8	30	4	9	15	24	21	18	17	17	14	12	12
23	18	22	12	16	10	7	3	2	1	2	1	2	2	2	2	1	2	1	1	1	2	1	1	2	5
24	3	3	3	3	2	2	3	3	4	4	3	3	3	3	3	2	5	3	3	3	4	4	2	4	3
25	2	2	3	3	4	3	6	4	5	7	7	5	6	5	2	2	4	3	2	4	9	5	4	8	4
26	8	6	4	3	4	6	4	4	4	5	7	6	8	8	5	5	8	5	6	6	5	14	27	9	7
27	14	20	12	15	19	13	12	13	11	13	10	24	37	28	25	23	25	24	20	39	32	22	19	14	20
28	23	37	37	32	27	23	17	10	8	8	7	7	9	6	13	9	12	7	7	7	9	7	7	7	14
29	6	6	6	8	6	7	8	9	12	9	8	6	4	5	5	4	4	3	6	4	3	4	5	5	6
30	4	4	3	4	7	8	6	5	10	8	7	6	9	7	5	3	5	3	2	3	3	3	3	3	5

MONTHLY STATISTICS:

GEOM		ARITH		<-----PERCENTILE----->					<-----RANGE----->					STN	GEOM	PERCENT	NO. OF TIMES	
MEAN	MEDIAN	MEAN		50	90	95	98	99	1-HR		24-HR		DEVIATION	VALID	DATA	1-HR	24-HR	
6	6	8		6	17	22	27	32	1	-	41	3	-	20	2	100	0	0

- NOTES: 1. FLAGS FOR INVALID DATA :
D : DYNAMIC CALIBRATION
T : TELEMETRY/DATALOGGR FAULT
M : MAINTENANCE OR ANALYZER FAULT
P : POWER FAILURE
2. BRACKETED READINGS EXCEED 1-HR OBJECTIVE 800 OR 24-HR OBJECTIVE 350

THE HONGKONG ELECTRIC COMPANY, LTD.
AIR QUALITY DATA MONTHLY TIME SERIES REPORT

STATION : CHEUNG CHAU
POLLUTANT : NITROGEN DIOXIDE

MONTH:APRIL

YEAR : 2014
UNIT : MICROGRAMS/CUBIC METER

DAY	1	2	3	4	5	6	7	8	9	10	11	12	13	14	15	16	17	18	19	20	21	22	23	24	MEAN
1	87	96	86	85	79	81	86	72	74	46	24	57	48	18	37	76	27	15	18	19	36	80	44	77	57
2	44	47	20	12	13	14	41	33	49	51	58	48	57	41	23	19	16	11	26	70	40	16	17	13	32
3	13	20	13	23	18	17	20	39	68	31	60	82	67	90	64	49	25	19	23	82	71	80	93	90	48
4	86	97	92	56	33	29	44	52	52	55	15	19	15	17	23	29	19	25	23	21	20	24	26	19	37
5	21	12	20	11	19	44	66	50	25	38	27	24	15	16	15	15	12	21	17	19	15	22	34	31	25
6	15	18	24	15	17	41	51	44	49	43	20	16	21	22	17	17	14	26	47	47	14	13	15	21	26
7	25	10	13	20	17	11	13	15	25	27	31	36	26	28	39	29	23	25	33	32	27	18	31	28	24
8	32	25	21	23	25	24	41	42	85	90	77	84	69	72	56	70	91	89	77	95	81	74	92	97	64
9	96	M	92	88	88	78	65	73	41	45	36	11	9	14	11	14	25	34	37	22	12	18	11	12	41
10	14	8	11	13	9	14	11	11	18	17	19	22	21	7	13	9	8	9	12	11	13	11	18	18	13
11	51	55	16	19	26	40	39	15	9	7	7	8	8	10	8	9	10	9	10	27	14	24	10	33	19
12	19	16	19	41	53	43	46	54	40	56	26	8	7	12	26	38	40	46	67	56	40	32	22	29	35
13	21	13	11	14	17	16	13	17	22	36	25	27	14	14	10	13	16	19	15	29	16	10	28	39	19
14	29	46	42	54	47	42	37	32	49	25	25	22	27	21	20	23	15	11	10	14	10	12	11	8	26
15	8	14	21	14	8	15	22	15	10	9	11	14	18	17	14	7	7	8	18	21	13	7	19	14	14
16	18	15	15	19	16	21	42	37	21	23	26	24	17	16	11	10	15	31	25	48	24	8	28	38	23
17	20	49	59	52	32	48	58	56	65	38	18	11	18	19	27	29	24	40	43	39	34	51	52	50	39
18	58	56	37	27	34	39	46	30	40	21	13	12	17	21	37	34	33	25	39	27	22	47	45	60	34
19	54	51	48	38	32	42	53	43	34	25	10	10	19	16	21	19	32	36	40	40	34	32	50	59	35
20	65	53	42	39	29	42	44	45	45	55	50	26	13	19	14	18	20	26	20	38	51	41	36	39	36
21	28	40	44	46	33	16	20	16	16	10	10	12	9	8	9	10	9	14	13	16	7	12	8	30	18
22	19	11	26	48	45	37	47	53	53	32	18	15	13	18	7	13	34	54	62	62	65	78	67	67	39
23	58	M	56	46	17	13	9	9	9	11	9	19	16	17	14	10	13	7	11	10	15	9	9	12	17
24	22	14	13	12	8	10	10	11	21	20	16	15	15	21	24	20	35	18	18	24	24	19	14	19	18
25	10	14	20	22	24	20	33	22	42	39	16	11	13	12	9	9	12	12	13	18	73	18	21	23	21
26	21	18	12	14	15	24	19	14	17	28	38	19	39	51	42	46	55	25	47	71	87	104	112	74	41
27	90	102	96	85	73	76	67	57	42	61	44	66	100	68	61	62	86	72	69	102	112	109	102	66	78
28	93	86	77	73	70	64	47	29	38	45	43	49	57	33	24	16	26	20	17	16	15	12	18	22	41
29	28	35	26	29	11	15	35	45	50	61	29	15	10	9	10	9	8	7	15	13	7	10	10	9	21
30	9	7	10	18	25	32	27	23	51	56	44	18	56	41	14	8	16	18	17	21	66	78	66	46	32

MONTHLY STATISTICS:

GEOM		ARITH		<-----PERCENTILE----->					<-----RANGE----->				STN	GEOM	PERCENT	NO. OF TIMES		
MEAN	MEDIAN	MEAN		50	90	95	98	99	1-HR		24-HR		DEVIATION	VALID DATA	ABOVE OBJECTIVE	1-HR	24-HR	
26	24	32		24	68	85	93	99	7	-	112	13	-	78	2	100	0	0

- NOTES: 1. FLAGS FOR INVALID DATA :
D : DYNAMIC CALIBRATION
T : TELEMETRY/DATALOGGR FAULT
M : MAINTENANCE OR ANALYZER FAULT
P : POWER FAILURE
2. BRACKETED READINGS EXCEED 1-HR OBJECTIVE 300 OR 24-HR OBJECTIVE 150

THE HONGKONG ELECTRIC COMPANY, LTD.
AIR QUALITY DATA MONTHLY TIME SERIES REPORT

STATION : CHEUNG CHAU
POLLUTANT : SULPHUR DIOXIDE

MONTH: MAY

YEAR : 2014
UNIT : MICROGRAMS/CUBIC METER

DAY	1	2	3	4	5	6	7	8	9	10	11	12	13	14	15	16	17	18	19	20	21	22	23	24	MEAN
1	2	3	3	3	3	1	2	2	3	6	9	13	6	8	7	3	4	3	3	2	2	4	4	3	4
2	2	2	2	2	2	4	3	2	4	3	2	3	5	3	5	4	3	3	4	4	4	5	7	5	3
3	4	4	2	3	3	4	4	4	6	7	7	8	8	5	4	5	4	3	2	3	3	1	1	2	4
4	1	2	3	3	3	3	3	3	2	1	1	1	2	1	3	2	4	7	8	7	9	7	7	8	4
5	5	5	3	3	2	2	1	2	3	3	2	6	21	6	2	3	3	0	1	2	3	3	3	2	4
6	3	1	2	2	2	3	4	5	3	4	3	3	3	3	2	1	2	2	4	3	2	2	2	6	3
7	1	0	1	1	0	1	1	2	4	5	4	4	2	3	3	3	5	3	2	2	2	2	3	2	2
8	2	3	2	2	3	4	4	4	6	6	7	4	D	D	D	D	2	2	3	2	4	2	1	2	3
9	1	1	1	1	1	1	0	1	1	1	1	1	1	1	1	1	1	2	2	3	2	1	1	1	1
10	2	3	2	4	5	4	4	4	4	5	10	9	3	1	0	1	0	1	1	3	3	6	4	3	3
11	3	3	1	6	5	5	4	8	9	4	3	4	3	2	2	1	2	1	1	2	1	0	0	1	3
12	0	0	0	0	0	1	1	1	1	3	10	12	9	4	4	3	4	6	8	11	9	11	12	6	5
13	6	4	4	2	1	2	3	2	3	3	5	5	4	3	3	4	2	2	2	2	2	2	1	1	3
14	2	1	1	1	1	1	1	1	2	4	2	3	5	2	2	2	3	2	2	5	2	3	2	2	2
15	2	2	2	3	3	2	3	3	5	7	5	3	3	2	2	3	3	2	2	2	3	3	4	3	3
16	3	3	2	2	3	2	3	2	3	3	4	3	2	1	1	1	2	2	3	1	1	2	1	1	2
17	1	1	2	1	1	1	1	2	1	1	3	3	3	3	2	2	1	3	2	1	2	2	3	4	2
18	2	1	1	1	2	2	2	4	8	7	6	5	2	2	1	2	2	3	2	1	2	4	5	6	3
19	3	2	1	2	1	2	4	7	7	4	4	3	2	3	2	1	0	0	0	2	3	1	1	2	2
20	1	2	3	1	2	1	0	0	1	1	1	1	1	2	1	1	0	0	1	3	9	11	10	8	3
21	9	8	9	1	0	0	0	0	1	0	0	0	0	1	3	1	0	0	0	0	1	0	0	2	2
22	2	1	1	1	1	1	1	1	1	2	2	2	3	1	2	1	2	4	2	3	6	8	7	2	2
23	2	1	1	0	0	0	0	0	0	1	0	0	0	0	2	8	10	10	9	7	8	7	5	4	3
24	4	3	3	5	3	2	3	4	5	4	4	4	4	7	9	18	13	1	2	1	1	3	4	3	5
25	3	2	1	1	2	2	3	1	2	2	2	3	4	3	3	2	2	2	2	1	4	4	5	7	3
26	5	5	4	4	2	1	1	1	4	3	3	4	2	4	3	2	3	1	1	3	1	1	1	1	3
27	2	2	1	2	2	2	2	2	7	13	10	7	6	8	4	2	5	3	1	1	1	1	1	1	4
28	2	1	1	2	2	2	2	3	7	13	10	3	2	2	1	2	2	2	1	2	1	1	2	2	3
29	3	5	5	4	3	2	2	2	3	4	3	2	2	2	2	1	3	3	3	1	3	2	3	1	3
30	2	1	1	2	2	3	3	5	6	4	3	3	1	2	1	1	2	2	1	3	1	2	1	2	2
31	2	2	2	2	3	4	4	6	8	6	5	5	4	3	2	2	1	2	1	2	1	1	0	1	3

MONTHLY STATISTICS:

GEOM		ARITH		<-----PERCENTILE----->					<-----RANGE----->					STN GEOM	PERCENT	NO. OF TIMES		
MEAN	MEDIAN	MEAN		50	90	95	98	99	1-HR		24-HR		DEVIATION	VALID DATA	1-HR	24-HR		
2	2	3		2	6	8	10	12	0	-	21	1	-	5	2	99	0	0

- NOTES: 1. FLAGS FOR INVALID DATA :
D : DYNAMIC CALIBRATION
T : TELEMETRY/DATALOGGR FAULT
M : MAINTENANCE OR ANALYZER FAULT
P : POWER FAILURE
2. BRACKETED READINGS EXCEED 1-HR OBJECTIVE 800 OR 24-HR OBJECTIVE 350

THE HONGKONG ELECTRIC COMPANY, LTD.
AIR QUALITY DATA MONTHLY TIME SERIES REPORT

STATION : CHEUNG CHAU
 POLLUTANT : NITROGEN DIOXIDE
 MONTH: MAY
 YEAR : 2014
 UNIT : MICROGRAMS/CUBIC METER

DAY	1	2	3	4	5	6	7	8	9	10	11	12	13	14	15	16	17	18	19	20	21	22	23	24	MEAN
1	30	19	14	14	16	9	25	28	38	28	53	55	42	46	37	11	20	19	18	13	13	21	20	19	25
2	18	11	12	14	15	15	12	16	29	15	12	11	15	8	15	9	7	8	12	16	18	22	34	17	15
3	14	12	8	8	7	12	8	11	14	17	16	20	21	14	8	11	9	8	10	12	16	9	9	9	12
4	14	16	20	33	30	32	36	28	26	8	7	5	10	8	14	9	26	69	89	50	89	90	87	77	36
5	80	65	49	34	39	19	19	25	28	34	24	43	79	27	20	18	13	22	22	39	59	55	43	16	36
6	25	17	21	14	17	19	18	22	18	24	25	44	35	18	23	26	14	23	22	26	15	12	16	15	21
7	15	M	14	18	13	11	16	17	18	33	71	46	56	60	65	34	54	29	17	15	17	14	24	8	29
8	11	16	17	26	22	40	47	44	36	30	22	8	D	D	D	D	10	16	13	11	8	13	18	38	22
9	19	14	26	22	20	5	9	6	11	10	19	19	25	28	13	18	8	15	12	13	9	8	8	6	14
10	15	22	9	9	16	16	17	16	9	7	15	18	5	3	5	5	3	5	19	22	32	25	14	12	13
11	9	40	17	22	13	18	14	26	35	12	8	3	3	3	6	3	15	24	35	44	48	30	41	25	21
12	2	5	1	2	5	12	4	7	4	11	29	17	17	3	5	4	9	24	26	25	20	42	76	43	16
13	29	23	35	6	7	9	20	13	15	13	8	3	3	3	4	4	7	8	12	10	8	8	5	4	11
14	9	6	5	2	6	7	6	3	4	6	5	3	4	3	4	3	4	6	9	16	8	16	5	6	6
15	10	8	5	7	11	13	9	15	11	8	7	3	3	4	3	5	8	7	7	7	9	11	16	14	8
16	12	7	5	6	11	6	9	5	4	1	4	1	5	3	3	6	10	5	16	10	10	6	0	1	6
17	1	4	4	3	1	10	8	6	4	3	4	3	3	2	1	2	3	7	7	7	9	14	11	11	5
18	5	2	4	7	10	12	7	7	9	8	5	3	2	5	0	18	17	10	10	16	19	26	24	19	10
19	9	6	3	6	5	6	9	6	3	3	3	1	1	2	1	1	1	2	8	13	36	32	33	18	9
20	19	19	13	6	9	1	0	0	0	0	0	0	0	2	2	6	9	27	47	66	76	76	69	65	21
21	65	M	63	20	19	9	4	3	17	16	9	4	6	5	7	5	8	6	3	8	15	8	6	8	14
22	7	5	3	2	2	1	1	2	5	5	2	4	4	3	9	6	7	16	9	11	26	20	18	9	7
23	13	7	10	7	5	6	2	3	6	3	7	11	8	22	54	51	53	46	54	49	49	36	15	17	22
24	21	17	22	26	15	11	14	21	9	6	7	6	7	11	12	19	18	6	11	10	8	13	13	9	13
25	6	4	3	9	11	10	6	5	23	10	2	1	4	4	5	4	5	6	9	7	16	10	10	18	8
26	16	14	13	9	10	4	5	6	6	4	3	3	3	4	6	8	7	6	5	2	17	9	7	27	8
27	19	7	6	13	8	13	10	4	13	24	19	10	9	7	8	6	9	11	6	2	4	2	6	5	9
28	12	13	8	11	10	11	11	10	13	18	11	5	5	5	4	5	5	5	4	4	2	7	11	25	9
29	16	18	14	10	7	12	11	10	5	5	4	5	5	5	9	4	6	9	16	7	10	8	7	7	9
30	14	10	10	10	8	11	14	16	7	10	8	5	3	6	6	6	8	6	6	11	6	13	7	25	9
31	22	28	29	23	32	32	30	33	26	6	6	5	5	5	4	5	5	5	6	6	6	4	3	16	14

MONTHLY STATISTICS:

GEOM	ARITH	<-----PERCENTILE----->					<-----RANGE----->					STN GEOM	PERCENT	NO. OF TIMES			
MEAN	MEDIAN	50	90	95	98	99	1-HR	90	24-HR	36	DEVIATION	VALID DATA	1-HR	24-HR			
10	10	15	10	32	46	65	76	0	-	90	5	-	36	2	99	0	0

- NOTES: 1. FLAGS FOR INVALID DATA :
 D : DYNAMIC CALIBRATION
 T : TELEMETRY/DATALOGGR FAULT
 M : MAINTENANCE OR ANALYZER FAULT
 P : POWER FAILURE
2. BRACKETED READINGS EXCEED 1-HR OBJECTIVE 300 OR 24-HR OBJECTIVE 150

THE HONGKONG ELECTRIC COMPANY, LTD.
AIR QUALITY DATA MONTHLY TIME SERIES REPORT

STATION : CHEUNG CHAU
POLLUTANT : SULPHUR DIOXIDE

MONTH: JUNE

YEAR : 2014
UNIT : MICROGRAMS/CUBIC METER

DAY	1	2	3	4	5	6	7	8	9	10	11	12	13	14	15	16	17	18	19	20	21	22	23	24	MEAN
1	1	2	2	3	2	2	5	4	6	12	16	14	1	10	11	12	4	2	1	1	1	2	1	1	5
2	1	2	1	0	1	1	0	1	2	0	0	1	2	2	3	3	1	0	0	1	0	0	0	0	1
3	0	0	0	0	0	0	1	2	3	5	12	10	1	8	13	6	5	0	0	0	0	0	0	0	3
4	1	2	3	4	1	0	1	5	3	2	10	11	17	27	22	10	6	3	3	1	2	5	5	9	6
5	7	6	6	5	4	4	7	6	1	2	4	6	2	3	0	1	2	1	3	6	4	3	2	4	4
6	3	3	3	2	1	1	1	0	1	4	11	14	13	14	18	19	15	8	6	8	5	9	14	5	7
7	1	1	0	0	1	1	1	3	5	7	7	6	4	5	4	5	1	1	0	0	0	0	0	1	2
8	1	1	3	2	2	0	1	4	6	3	3	4	3	2	2	4	2	2	1	1	0	1	0	1	2
9	1	1	1	0	0	1	2	2	3	2	3	3	3	1	1	2	1	1	2	3	2	1	2	3	2
10	2	2	2	2	2	2	3	3	6	6	11	3	0	3	5	4	5	6	7	10	12	18	11	10	6
11	5	6	1	0	0	0	2	1	3	3	2	2	1	0	0	0	0	0	0	0	0	0	0	1	1
12	0	0	0	0	0	0	0	1	2	0	1	4	4	2	2	3	1	4	7	3	3	1	1	4	2
13	3	7	4	6	3	1	2	4	7	5	4	4	2	4	5	2	6	5	8	10	6	11	6	7	5
14	5	6	3	2	1	2	2	3	6	11	9	13	8	5	4	5	3	5	5	3	3	2	3	2	5
15	0	0	1	1	0	0	0	0	0	1	2	5	2	0	0	3	1	1	T	T	T	T	T	T	1
16	T	T	T	T	T	T	T	T	T	T	T	T	T	T	T	T	T	T	T	T	T	T	T	T	
17	T	T	T	T	T	T	T	T	T	T	T	3	1	3	0	0	2	1	2	2	4	4	3	5	
18	6	8	10	8	6	5	8	12	11	11	15	7	11	17	12	8	9	7	3	3	5	4	7	6	8
19	7	6	6	4	2	2	2	4	7	7	5	3	4	10	11	11	11	4	3	1	3	3	2	2	5
20	2	3	3	1	2	2	2	4	4	4	10	7	4	6	13	12	9	4	2	2	2	3	2	7	5
21	5	7	6	6	5	6	9	13	14	12	10	11	7	2	2	2	2	1	2	1	1	2	0	1	5
22	1	1	1	2	1	0	1	0	1	1	1	2	2	0	1	3	1	1	0	0	0	0	0	0	1
23	0	0	1	1	1	1	2	1	1	2	4	5	0	1	1	0	0	0	0	0	0	0	0	0	1
24	0	0	0	0	0	0	0	0	0	0	0	1	4	2	0	0	0	0	0	0	0	0	0	0	0
25	0	0	0	0	0	0	0	0	0	1	1	1	0	0	0	0	0	0	0	0	0	0	0	0	0
26	0	0	0	0	0	0	0	0	0	1	1	3	1	2	4	0	0	0	0	0	0	1	0	0	1
27	0	0	0	0	0	0	0	0	1	0	2	2	0	0	0	0	0	0	0	0	0	0	0	0	0
28	0	0	0	0	0	0	0	0	0	1	1	0	0	1	1	0	0	0	0	0	0	0	0	0	0
29	0	0	0	0	0	0	0	0	0	0	0	2	1	1	2	3	1	0	0	0	0	0	0	0	0
30	0	0	0	0	0	0	0	0	0	2	1	3	7	2	4	8	4	3	0	2	4	2	3	4	2

MONTHLY STATISTICS:

GEOM		ARITH		<-----PERCENTILE----->					<-----RANGE----->				STN	GEOM	PERCENT	NO. OF TIMES		
MEAN	MEDIAN	MEAN		50	90	95	98	99	1-HR		24-HR		DEVIATION		VALID DATA	1-HR	24-HR	
3	2	3		2	8	11	14	16	0	-	27	0	-	8	2	94	0	0

- NOTES: 1. FLAGS FOR INVALID DATA :
D : DYNAMIC CALIBRATION
T : TELEMETRY/DATALOGGR FAULT
M : MAINTENANCE OR ANALYZER FAULT
P : POWER FAILURE
2. BRACKETED READINGS EXCEED 1-HR OBJECTIVE 800 OR 24-HR OBJECTIVE 350

THE HONGKONG ELECTRIC COMPANY, LTD.
AIR QUALITY DATA MONTHLY TIME SERIES REPORT

STATION : CHEUNG CHAU
POLLUTANT : NITROGEN DIOXIDE

MONTH: JUNE

YEAR : 2014
UNIT : MICROGRAMS/CUBIC METER

DAY	1	2	3	4	5	6	7	8	9	10	11	12	13	14	15	16	17	18	19	20	21	22	23	24	MEAN
1	9	15	8	9	10	7	9	6	20	7	4	3	4	5	6	6	6	8	9	8	10	14	10	21	9
2	16	11	6	11	6	2	2	2	19	6	2	5	2	2	2	3	3	5	4	2	5	8	4	3	5
3	3	7	10	4	1	4	5	2	3	11	5	2	3	5	7	5	6	7	30	31	14	28	33	27	11
4	25	M	33	32	22	14	22	17	6	11	11	5	7	6	4	5	6	7	5	3	7	8	19	22	13
5	13	30	22	24	23	28	26	14	10	5	7	4	11	11	8	5	4	7	5	13	10	9	9	4	13
6	7	12	8	13	24	33	7	7	21	22	14	4	2	6	16	32	34	70	82	88	84	80	73	73	34
7	72	56	26	10	13	20	34	46	32	50	51	45	30	5	4	6	6	3	2	3	4	28	58	60	28
8	58	36	28	24	30	43	38	50	69	45	45	70	90	58	46	43	34	28	24	16	12	20	38	29	41
9	14	19	13	17	7	14	11	14	20	28	18	12	8	7	8	7	7	8	11	12	9	12	9	11	12
10	11	5	5	5	7	8	16	22	16	18	12	12	7	6	6	6	9	15	21	15	14	17	16	41	13
11	27	15	14	14	10	12	13	8	9	11	7	5	3	6	7	11	8	6	9	8	6	7	8	9	10
12	9	8	8	7	6	9	10	10	14	7	10	12	13	11	9	11	15	28	88	33	14	17	40	14	17
13	19	41	52	45	35	33	59	48	45	52	43	20	28	14	29	20	33	44	43	34	36	15	12	15	34
14	14	36	33	34	24	17	34	35	38	37	48	45	34	45	30	49	48	26	14	24	40	73	76	86	39
15	58	33	16	10	35	71	76	52	31	34	29	24	13	19	15	22	16	17	20	14	7	17	51	10	29
16	6	4	1	2	8	6	3	3	6	10	6	8	5	9	8	5	5	6	7	7	3	5	3	3	5
17	6	10	3	3	5	2	2	2	3	9	5	4	2	5	7	9	5	2	4	4	1	3	3	5	4
18	0	M	3	5	3	4	8	2	1	4	2	0	0	1	1	2	0	2	1	1	0	3	1	5	2
19	5	7	2	2	1	2	2	4	1	6	3	1	2	1	M	M	1	0	1	3	0	0	0	0	2
20	0	1	1	1	1	1	1	0	1	1	2	1	3	1	3	2	1	2	2	5	3	3	1	1	2
21	1	0	0	2	0	2	2	6	0	16	9	26	33	36	29	4	2	5	6	3	5	3	1	1	8
22	3	8	2	0	1	1	0	2	2	32	11	6	9	2	4	20	2	2	6	13	9	12	12	31	8
23	16	23	27	45	23	7	2	3	2	0	0	1	2	0	0	3	2	3	1	3	0	0	4	16	8
24	20	3	2	9	18	12	20	25	13	7	4	10	22	1	3	3	0	1	3	2	5	4	1	4	8
25	3	2	1	2	0	0	2	4	5	7	6	4	1	7	8	17	3	6	19	29	20	30	24	9	9
26	5	4	1	6	2	7	9	9	14	9	6	2	0	2	1	2	1	2	2	1	2	2	1	1	4
27	2	0	2	2	1	2	4	4	8	4	4	3	1	1	0	2	1	1	3	3	2	1	2	3	2
28	8	3	2	3	6	8	18	10	12	2	2	2	1	1	2	4	3	3	3	4	1	2	1	1	4
29	3	8	13	22	14	9	12	13	8	4	20	13	5	1	2	0	0	5	0	2	2	0	8	5	7
30	1	0	0	0	0	0	1	0	0	1	0	0	1	0	1	0	0	1	0	0	1	0	1	2	0

MONTHLY STATISTICS:

GEOM		ARITH		<-----PERCENTILE----->					<-----RANGE----->					STN	GEOM	PERCENT	NO. OF TIMES	
MEAN	MEDIAN	MEAN		50	90	95	98	99	1-HR		24-HR		DEVIATION	VALID	DATA	1-HR	24-HR	
7	7	13		7	34	46	70	76	0	-	90	0	-	41	3	99	0	0

- NOTES: 1. FLAGS FOR INVALID DATA :
D : DYNAMIC CALIBRATION
T : TELEMETRY/DATALOGGR FAULT
M : MAINTENANCE OR ANALYZER FAULT
P : POWER FAILURE
2. BRACKETED READINGS EXCEED 1-HR OBJECTIVE 300 OR 24-HR OBJECTIVE 150

Appendix C Summary Results on Water Quality Monitoring

LAMMA POWER STATION FGD WASTEWATER TREATMENT PLANT EFFLUENT DISCHARGE TO ASH LAGOON SUSPENDED SOLIDS AND PH

Period : April – June 2014

Week Ending	No. of Samples	Suspended Solids, mg/L			pH		
		Maximum	Minimum	Average	Maximum	Minimum	Average
05/04/14	4*	20	12	16	8.4	8.1	8.3
12/04/14	7	13	11	12	8.2	8.1	8.1
19/04/14	6*	14	10	12	8.2	8.0	8.1
26/04/14	6*	16	11	12	8.2	8.1	8.1
03/05/14	4*	15	14	14	8.3	8.1	8.2
10/05/14	6*	15	11	13	8.2	8.1	8.1
17/05/14	7	14	10	12	8.2	8.1	8.1
24/05/14	7	16	11	14	8.3	8.1	8.1
31/05/14	6*	15	10	12	8.3	8.1	8.2
07/06/14	7	16	12	14	8.3	8.1	8.2
14/06/14	7	14	11	12	8.3	8.1	8.2
21/06/14	5*	13	10	12	8.3	8.1	8.2
28/06/14	6*	15	11	13	8.2	8.1	8.2

Remark :

* - No sampling for the remaining day(s) of the week / no sampling due to no discharge

**LAMMA POWER STATION
FGD WASTEWATER TREATMENT PLANT
EFFLUENT DISCHARGE TO ASH LAGOON
TRACE METAL, TOTAL PHOSPHORUS
AND TOTAL NITROGEN ANALYSIS**

Period : April – June 2014

Sampling date		3/4/2014	8/5/2014	11/6/2014
Barium,	ug/L	<150	<150	<150
Mercury,	ug/L	<0.5	<0.5	<0.5
Cadmium,	ug/L	<1	1	<1
Iron,	ug/L	<400	<400	<400
Total Phosphorous,	mg/L	<0.8	<0.8	<0.8
Total Nitrogen,	mg/L	140	126	189
Cyanide,	mg/L	0.01	0.01	<0.01

Remark:

According to the WPCO Ash Lagoon Discharge Licence, contents at exact levels of trace metals below 1/10 th of the WPCO Licence permitted limits will not be reported. When the concentration of a metal exceeds 1/10 th of the limit, the exact value of the metal concentration will be reported.

Appendix D Summary of EMIS

EM&A Log Ref.	Mitigation Measures	Implementation Status
	GENERAL	
A1	No other process, except the Wet Limestone-Gypsum process used in the FGD plants of the coal-fired Units L6, L7 and L8 within the Lamma Power Station, shall be used in the FGD plants for the projects unless otherwise agreed by EPD.	Complied
	WATER QUALITY	
B1	All wastewater arising from the operation of the projects shall be collected and directed to the existing wastewater treatment plant within the Lamma Power Station for treatment.	Complied
B2	The operational plant effluent from the FGD plants should be reused as much as possible in order to minimise discharge to the WWTP.	Complied
B3	Maintenance of the WWTP should be performed regularly to ensure the effluent from the WWTP would not exceed the current requirements stipulated in the WPCO licence for Ash Lagoon.	Complied
	WASTE	
C1	No gypsum or sludge arising from the operation of the projects shall be disposed of anywhere. All gypsum and sludge shall be collected and reused.	Complied
	NOISE	
D1	Equipments including the Absorber Recirculation Pump, Oxidation Air Blower, Booster Fan and Booster Fan Motor of the FGD plants shall be acoustically insulated and the Gas-Gas Heater (untreated side) of the FGD plants shall be provided with reinforced lagging to reduce the noise impact.	Complied