

香港電燈有限公司
The Hongkong Electric Co., Ltd.



**Lamma Power Station
Units L2, L4 & L5 Flue Gas Desulphurization
Plants Retrofit**

Operational Phase

Quarterly Environmental Monitoring & Audit Report

July – September 2014

香港電燈有限公司
The Hongkong Electric Co., Ltd.



ENVIRONMENTAL IMPACT ASSESSMENT (EIA) ORDINANCE, CAP. 499

ENVIRONMENTAL PERMITS NO. EP-248/2006 & EP-287/2007

**LAMMA POWER STATION
UNITS L2, L4 & L5 FLUE GAS DESULPHURIZATION PLANTS RETROFIT**

**ENVIRONMENTAL MONITORING & AUDIT PROGRAMME
AT OPERATIONAL PHASE**


Report Title	Quarterly EM&A Report (July to September 2014)
Date	9 December 2014
Certified by	 (Mr. IP Tat-Yan, Environmental Team Leader)

TABLE OF CONTENT

EXECUTIVE SUMMARY

1.	INTRODUCTION.....	1
1.1	Background	1
1.2	Project Organisation	2
1.3	Plant Availability during the Reporting Period	2
1.4	Malfunction/Outage Records of Pollution Control Equipment	2
1.5	Summary of EM&A Requirements	4
2.	AIR QUALITY.....	12
2.1	Monitoring Requirements	12
2.2	Summary of Results and Observations	12
3.	WATER QUALITY	14
3.1	Monitoring Requirements	14
3.2	Summary of Results and Observations	14
4.	ENVIRONMENTAL AUDIT	16
4.1	Review of Environmental Monitoring Procedures	16
4.2	Assessment of Environmental Monitoring Results	16
4.3	Status of Environmental Licensing and Permitting	18
4.4	Implementation Status of Environmental Mitigation Measures	18
4.5	Implementation Status of Event/Action Plan	19
4.6	Implementation Status of Environmental Complaint Handling Procedures	19
5.	FUTURE KEY ISSUES.....	20
5.1	Outage Plan for the coming 3 months	20
5.2	Key issues for the coming 3 months	20
6.	CONCLUSION	21

LIST OF TABLES

Table 2.1	Air Quality Monitoring Parameters and Frequency
Table 3.1	Water Quality Monitoring Parameters and Frequencies
Table 4.1	Summary of Action/Limit Level Exceedances on Monitoring Parameters
Table 4.2	Amount of Gypsum and Sludge Collected for Reuse by Contractor
Table 4.3	Summary of Environmental Licensing and Permit Status
Table 4.4	Environmental Complaints Received
Table 4.5	Outstanding Environmental Complaints Carried Over

LIST OF FIGURES

- Figure 1.1a Location of New Facilities for L4 & L5 FGD Plant
- Figure 1.1b Location of New Facilities for L2 FGD Plant
- Figure 1.2a General Arrangement of L4 & L5 FGD Plant
- Figure 1.2b General Arrangement of L2 FGD Plant
- Figure 1.3 Schematic Diagram of L2, L4 & L5 FGD Plant
- Figure 1.4 Simplified Schematic Diagram of FGD Wastewater Treatment Plant
- Figure 1.5 Organization Chart at Operational Phase

APPENDIX

- Appendix A Event/Action Plans in Response to Exceedance of AL Levels
- Appendix B Air Quality Monitoring Results
- Appendix C Summary Results on Water Quality Monitoring
- Appendix D Summary of EMIS

EXECUTIVE SUMMARY

This is the quarterly Environmental Monitoring and Audit (EM&A) report for the Projects “Lamma Power Station Units L4 & L5 Flue Gas Desulphurization Plant Retrofit” and “Lamma Power Station Unit L2 Flue Gas Desulphurization Plant Retrofit” prepared by the Environmental Team (ET). This report presents the results of impact monitoring on air and water quality and environmental audit for the operation of the said projects in the period from July to September 2014.

Environmental monitoring for air quality and water quality were carried out for the purpose of this EM&A program as well as for fulfilling the requirements stipulated in the relevant licences. The results were checked against the established Action/Limit (AL) levels. The implementation status of the environmental mitigation measures, Event/Action Plan and environmental complaint handling procedures were also checked.

Plant Availability

Units L2, L4 and L5 were out of service during the following period:

Unit	Period	Remark
L2	01/07/2014 00:00 to 03/07/2014 07:28	No. 4~6 T/A Bearing Inspection & Misc. Defect Rectification
L2	22/07/2014 20:49 to 23/07/2014 03:00	Test Venturi Removal
L2	01/08/2014 23:02 to 04/08/2014 06:21	Defect Rectification
L2	23/08/2014 03:27 to 24/08/2014 19:11	Defect Rectification
L2	15/09/2014 19:30 to 16/09/2014 03:45	Defect Rectification
L4	05/07/2014 19:45 to 07/07/2014 00:05	Defect Rectification & Test Venturi Removal
L4	13/07/2014 20:42 to 14/07/2014 01:22	Defect Rectification
L4	29/08/2014 23:24 to 31/08/2014 20:32	Defect Rectification

Malfunction/Outage Records of Pollution Control Equipment

Major outages of the Pollution Control Equipment during the reporting period are listed below:

Equipment	Period	Cause	Actions Taken
L4 FGD	07/07/2014 07:25 to 12:12	FGD plant was bypassed due to the tripping of BUF on vibration high	EPD was informed by letter dated 09/07/2014

Equipment	Period	Cause	Actions Taken
L4 FGD	12/08/2014 19:02 to 23:40	FGD plant was bypassed due to the tripping of BUF on vibration high	EPD was informed by letter dated 15/08/2014

For other minor outages, please refer to section 1.4 of the report.

Environmental Monitoring Works

Environmental monitoring works were performed during the operation of Units L2, L4 and L5 FGD Plants in the reporting period.

Air Quality

No exceedance of Action and Limit levels for air quality were recorded in the reporting period.

Water Quality

No exceedance of Action and Limit levels for water quality were recorded in the reporting period.

Environmental Licensing and Permitting

Description	Permit / Licence No.	Valid Period		Issued To	Date of Issuance
		From	To		
Environmental Permit for L4/5 FGD plants retrofit project	EP-248/2006	25/04/2006	-	HK Electric	25/04/2006
Environmental Permit for Unit L2 FGD plant retrofit project	EP-287/2007	02/10/2007	-	HK Electric	02/10/2007
Specified Processes Licence issued under APCO	L-7-002(9)	01/01/2013	31/12/2014	HK Electric	28/12/2012
WPCO discharge licence for Ash Lagoon	WT00011131-2011	15/12/2011	31/12/2016	HK Electric	15/12/2011

Implementation Status of Environmental Mitigation Measures

Environmental mitigation measures were implemented in the reporting period.

Environmental Complaints

One environmental concern against the operation of Lamma Power Station was received during the reporting period, for which nothing abnormal was identified at the Power Station.

Future key issues

Key issues to be considered in the coming months include:

Air Impact

- To continuously carry out the air quality monitoring for Units L2, L4 and L5.

Water Impact

- To continuously carry out the water quality monitoring for FGD WWT plant.

Concluding Remarks

The environmental performance of the projects was generally satisfactory.

1. INTRODUCTION

The Environmental Team (hereinafter called the “ET”) was formed within The Hongkong Electric Co. Ltd (HK Electric) to undertake Environmental Monitoring and Audit for the “Operation of Lamma Power Station Units L4 & L5 Flue Gas Desulphurization Plant Retrofit Project” under the requirements of Clause 2.18 of Environmental Permit (EP) No. EP-248/2006 and “Operation of Lamma Power Station Unit L2 Flue Gas Desulphurization Plant Retrofit Project” under the requirements of Clause 2.10 of Environmental Permit (EP) No. EP-287/2007.

This report summarizes the environmental monitoring and audit work for the said Projects for the period from July to September 2014.

1.1 Background

The Projects involves retrofitting the three existing coal-fired generating Units L2, L4 and L5 of Lamma Power Station with Flue Gas Desulphurisation (FGD) plants for reducing sulphur dioxide emissions in support of Government policy to improve the air quality of the Pearl River Delta.

The Projects include the installation and operation of FGD plants with flue gas desulphurization efficiency of 90% for the three coal-fired Units L2, L4 & L5 to reduce the overall SO₂ emissions from Lamma Power Station. The process adopted for the FGD plants is “Wet Limestone-Gypsum”, a technology which has already been used in, and proved effective and reliable for the existing coal-fired units L6, L7 & L8. The flue gas from the boiler is directed to the FGD absorber inside which removal of SO₂ is take place by reaction with limestone slurry. After passing through the absorber, the treated flue gas is heated up by a gas-gas heater to over 80°C at boiler rated capacity and directed back to the existing chimney for discharge to the atmosphere. Figure 1.1a, Figure 1.1b, Figure 1.2a, Figure 1.2b and Figure 1.3 show the location and schematic of the FGD plants.

Wastewater filtrated from the reacted limestone slurry, i.e. gypsum slurry, is produced and it is directed to the existing FGD wastewater treatment plant (WWTP). The FGD WWTP is designed to treat the effluent from FGD plants by alkalization, precipitation and neutralization processes. The schematic diagram of the FGD WWTP is illustrated in Figure 1.4.

The additional equipment for the FGD Plants retrofit projects for Units L2, L4 and L5 includes:

- Three sets of FGD absorbers and associated ductworks
- Three sets of booster fans
- Three sets of gas-gas heaters
- Two FGD Switchgear and Equipment Buildings
- Gypsum dewatering system comprising two sets of hydrocyclones and belt filters

1.2 Project Organisation

The management structure to oversee the Projects includes the following:

- Environmental Protection Department (The Authority);
- General Manager (Corporate Development) (The official contact person between HK Electric and EPD);
- Environmental Team Leader (ET Leader);
- Environmental Team (ET).

The organization chart for the Operation EM&A programme is shown in Figure 1.5.

1.3 Plant Availability during the Reporting Period

Units L2, L4 and L5 were out of service during the following period:

Unit	Period	Remark
L2	01/07/2014 00:00 to 03/07/2014 07:28	No. 4~6 T/A Bearing Inspection & Misc. Defect Rectification
L2	22/07/2014 20:49 to 23/07/2014 03:00	Test Venturi Removal
L2	01/08/2014 23:02 to 04/08/2014 06:21	Defect Rectification
L2	23/08/2014 03:27 to 24/08/2014 19:11	Defect Rectification
L2	15/09/2014 19:30 to 16/09/2014 03:45	Defect Rectification
L4	05/07/2014 19:45 to 07/07/2014 00:05	Defect Rectification & Test Venturi Removal
L4	13/07/2014 20:42 to 14/07/2014 01:22	Defect Rectification
L4	29/08/2014 23:24 to 31/08/2014 20:32	Defect Rectification

1.4 Malfunction/Outage Records of Pollution Control Equipment

Equipment	Period	Cause	Actions Taken
L2 FGD	11/07/2014 02:49 to 02:54	Routine damper exercise	EPD was informed on 15/07/2014

Equipment	Period	Cause	Actions Taken
L2 FGD	18/07/2014 00:50 to 00:55	Routine damper exercise	EPD was informed on 24/07/2014
L2 FGD	05/09/2014 04:23 to 04:26	Routine damper exercise	EPD was informed on 11/09/2014
L4 FGD	07/07/2014 07:25 to 12:12	FGD plant was bypassed due to the tripping of BUF on vibration high	EPD was informed by letter dated 09/07/2014
L4 FGD	26/07/2014 01:38 to 01:42	Routine damper exercise	EPD was informed on 30/07/2014
L4 FGD	02/08/2014 02:45 to 02:48	Routine damper exercise	EPD was informed on 05/08/2014
L4 FGD	09/08/2014 02:17 to 02:19	Routine damper exercise	EPD was informed on 13/08/2014
L4 FGD	12/08/2014 19:02 to 23:40	FGD plant was bypassed due to the tripping of BUF on vibration high	EPD was informed by letter dated 15/08/2014
L4 FGD	23/08/2014 01:57 to 02:01	Routine damper exercise	EPD was informed on 28/08/2014
L4 FGD	13/09/2014 02:41 to 02:45	Routine damper exercise	EPD was informed on 16/09/2014
L4 FGD	20/09/2014 02:16 to 02:20	Routine damper exercise	EPD was informed on 24/09/2014
L4 FGD	27/09/2014 01:31 to 01:46	Routine damper exercise	EPD was informed on 30/09/2014
L5 FGD	05/07/2014 02:59 to 03:02	Routine damper exercise	EPD was informed on 07/07/2014
L5 FGD	12/07/2014 01:53 to 01:55	Routine damper exercise	EPD was informed on 15/07/2014
L5 FGD	12/07/2014 11:18 to 11:29	FGD was bypassed due to FGD inlet temperature high	EPD was informed on 16/07/2014
L5 FGD	19/07/2014 03:44 to 03:52	Routine damper exercise	EPD was informed on 24/07/2014
L5 FGD	26/07/2014 02:57 to 03:00	Routine damper exercise	EPD was informed on 30/07/2014
L5 FGD	02/08/2014 02:55 to 03:00	Routine damper exercise	EPD was informed on 05/08/2014
L5 FGD	09/08/2014 02:12 to 02:14	Routine damper exercise	EPD was informed on 13/08/2014
L5 FGD	16/08/2014 02:40 to 02:56	Routine damper exercise	EPD was informed on 20/08/2014

Equipment	Period	Cause	Actions Taken
L5 FGD	23/08/2014 02:06 to 02:09	Routine damper exercise	EPD was informed on 26/08/2014
L5 FGD	30/08/2014 02:36 to 02:39	Routine damper exercise	EPD was informed on 3/09/2014
L5 FGD	06/09/2014 03:23 to 03:41	Routine damper exercise	EPD was informed on 11/09/2014
L5 FGD	13/09/2014 02:55 to 02:58	Routine damper exercise	EPD was informed on 16/09/2014
L5 FGD	20/09/2014 02:06 to 02:08	Routine damper exercise	EPD was informed on 24/09/2014
L5 FGD	27/09/2014 03:22 to 03:42	Routine damper exercise	EPD was informed on 30/09/2014

1.5 Summary of EM&A Requirements

Environmental Monitoring and Audit (EM&A) requirements have been discussed in the Environmental Impact Assessment (EIA) Report/ Project Profile for the Projects. The assessment results indicate that environmental monitoring works required for the EM&A programmes of these Projects are already in place or would be implemented under Lamma Power Station Extension Environmental Permit or environmental licenses for the operation of the existing Lamma Power Station. Such monitoring works are considered adequate for the Projects and no additional EM&A activities are required. Hence, environmental monitoring for air quality and water quality are carried out for the purpose of this EM&A program as well as for fulfilling the requirements stipulated in the relevant licences.

The EM&A monitoring work for air and water quality are described in Section 2 and Section 3 respectively.

The following environmental audits are summarized in Section 4 of the report:

- Environmental monitoring results;
- The status of environmental licensing and permits for the Projects;
- The implementation status of environmental protection and pollution control / mitigation measures.

The future key issues for the Projects will be reported in Section 5 of this report.

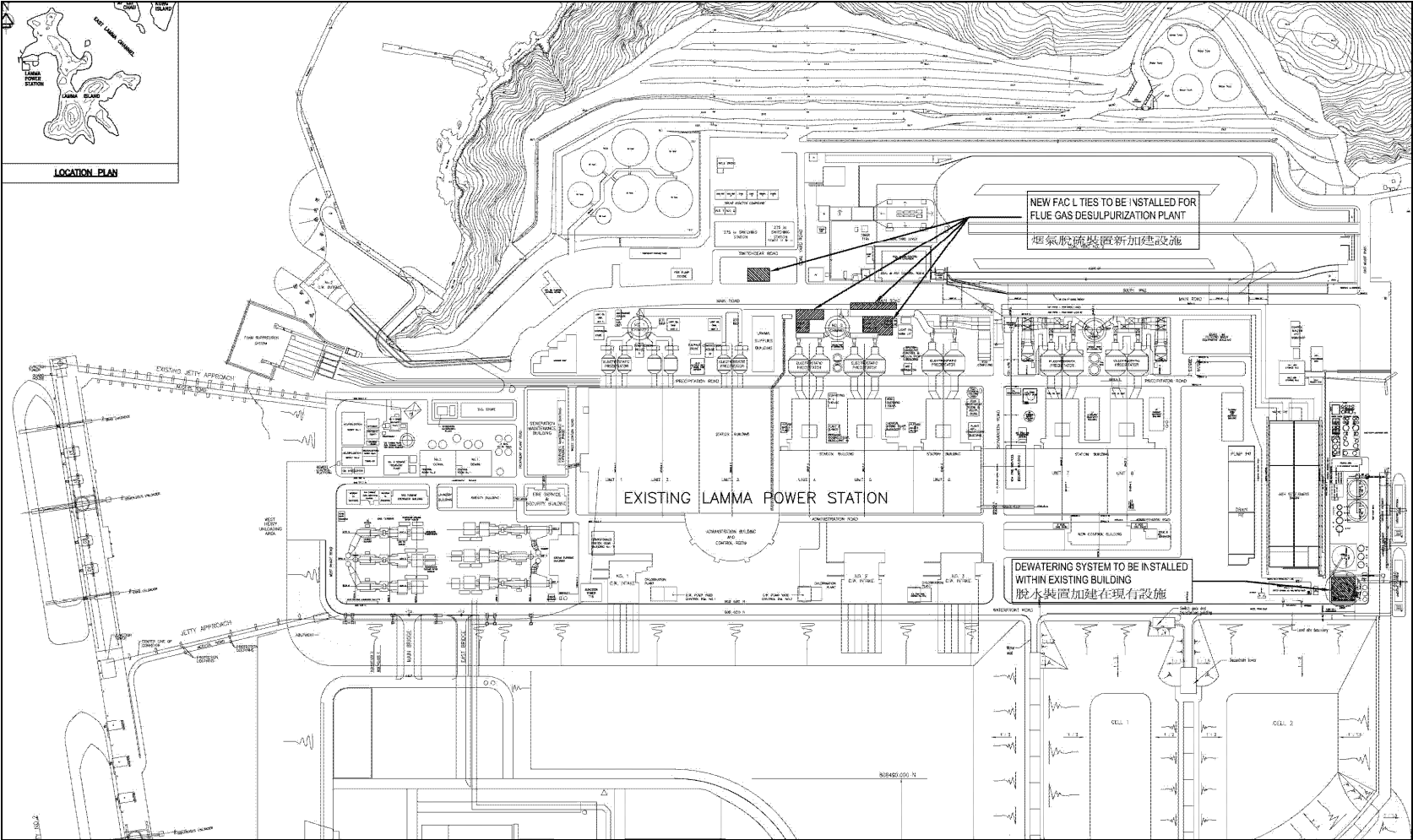


Figure 1.1a Location of New Facilities for L4 & L5 FGD Plants

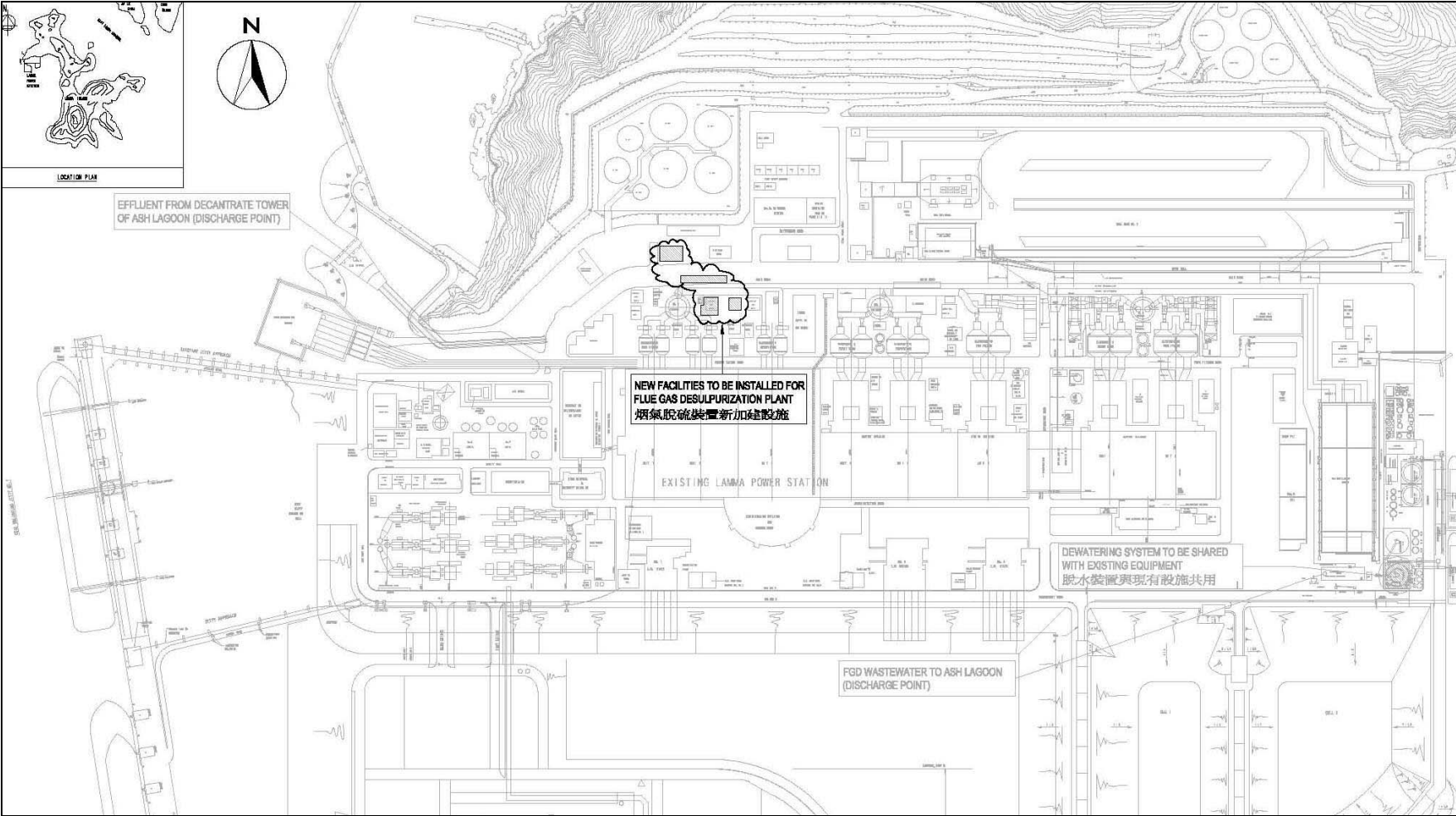


Figure 1.1b Location of New Facilities for L2 FGD Plant

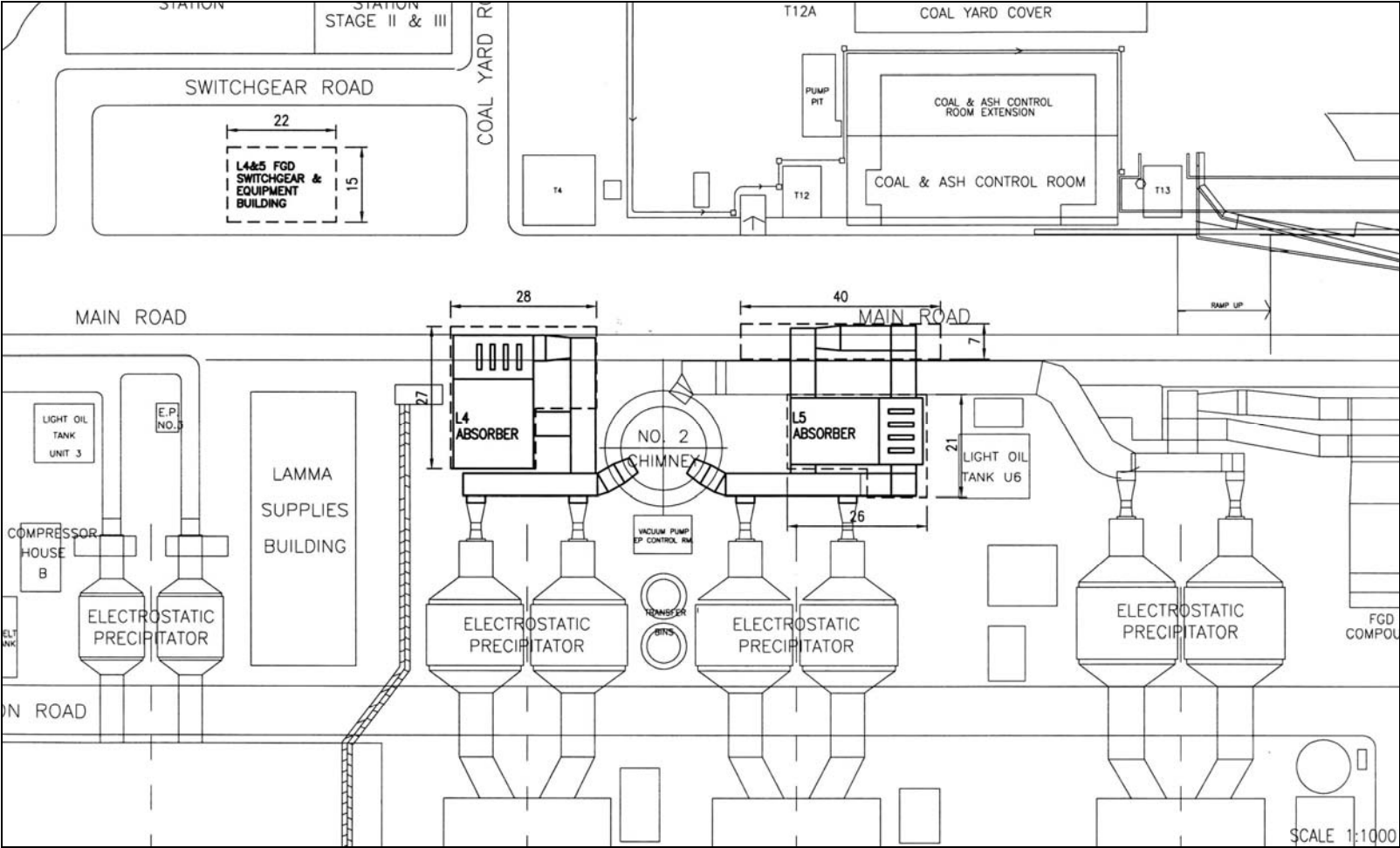


Figure 1.2a General Arrangement of L4 & L5 FGD Plants

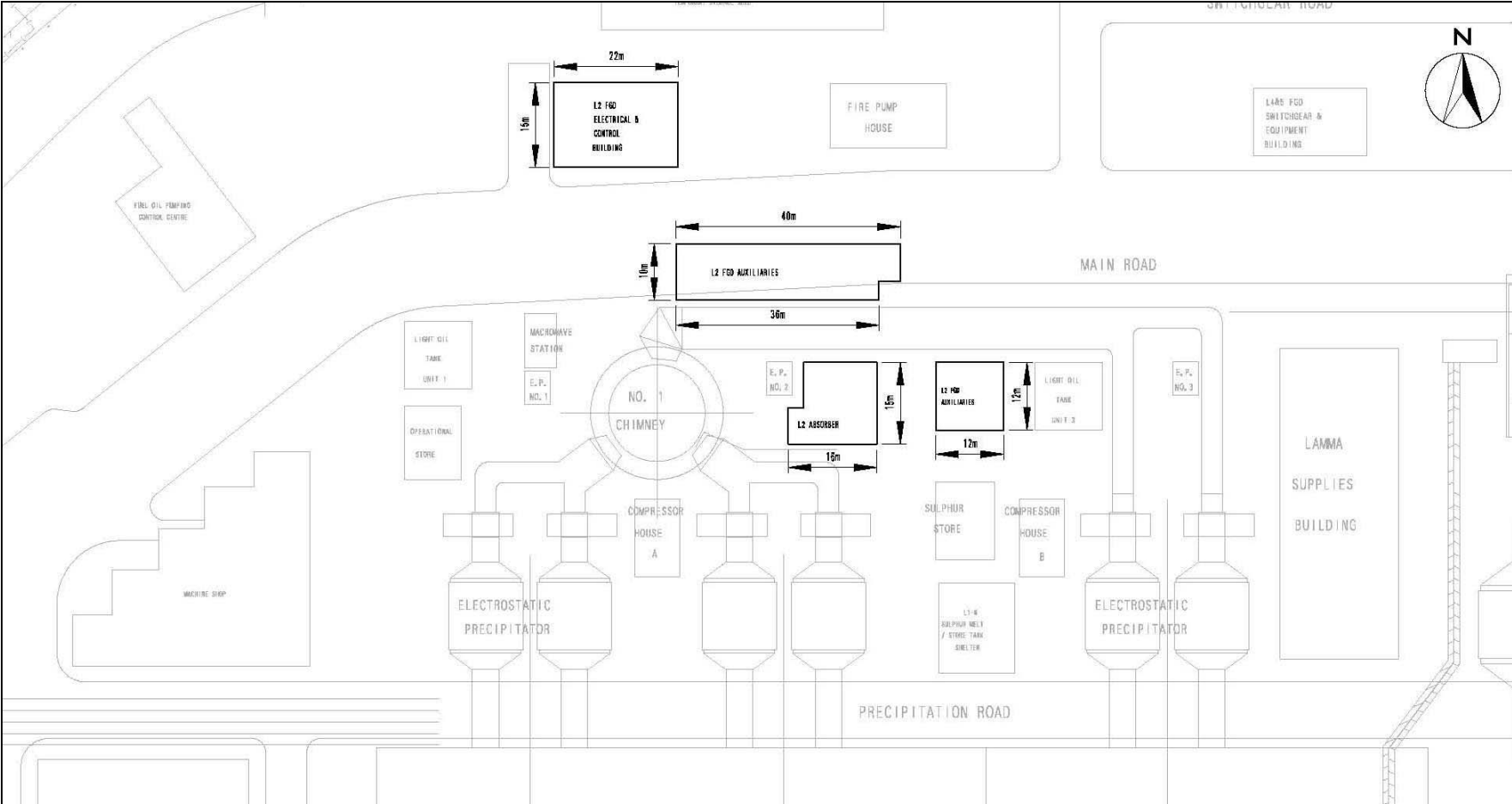


Figure 1.2b General Arrangement of L2 FGD Plant

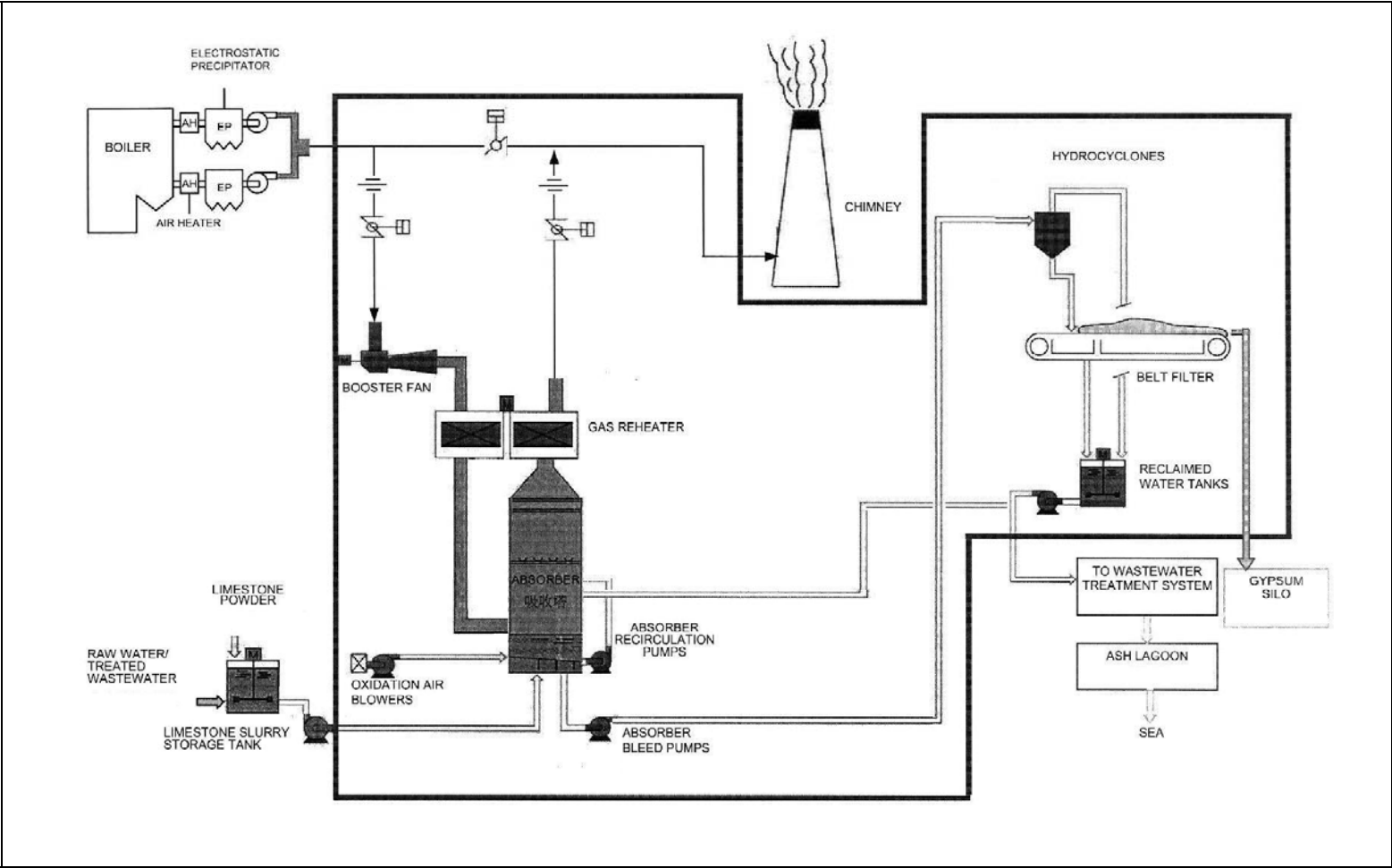


Figure 1.3 Schematic Diagram of the L2, L4 & L5 FGD Plant

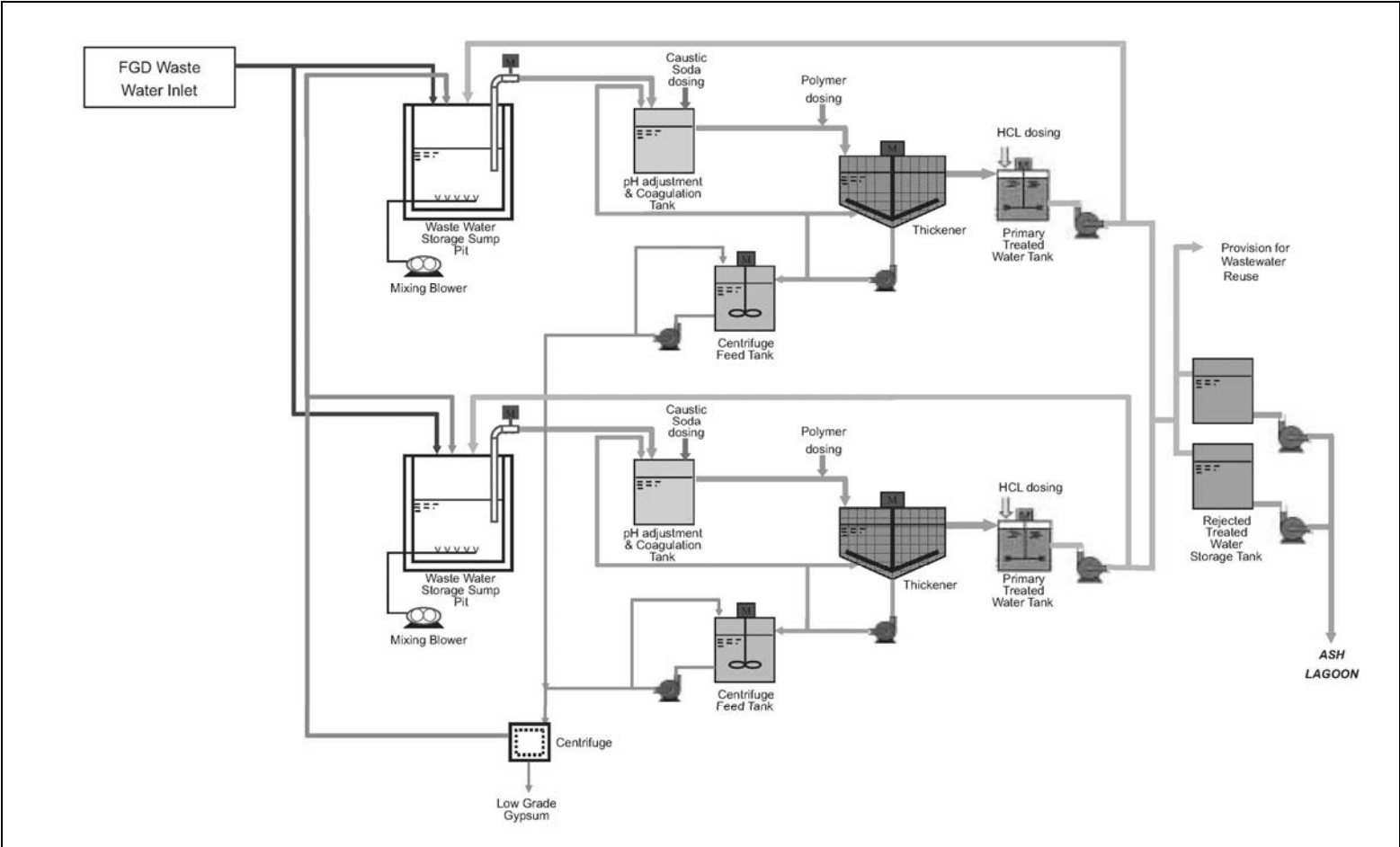


Figure 1.4 Simplified Schematic Diagram of FGD Wastewater Treatment Plant

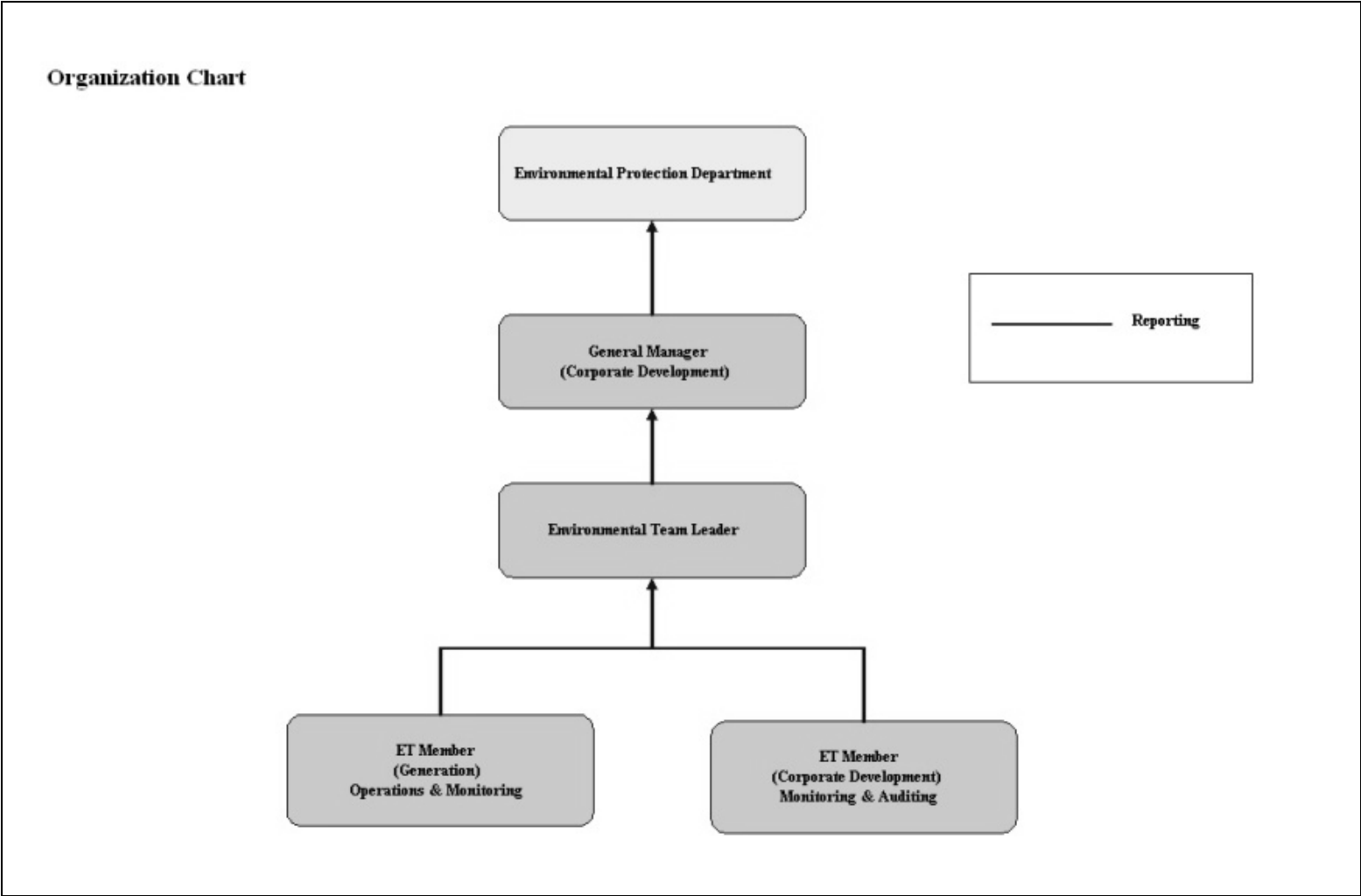


Figure 1.5 Organization Structure at Operational Phase of the Projects

2. AIR QUALITY

2.1 Monitoring Requirements

Since the Projects will bring a general air quality improvement, no additional EM&A activities are considered required, besides those already in place, such as those required by specified process licenses for the operation of the existing Lamma Power Station. In accordance with the requirements stipulated in the Specified Processes Licence issued under Air Pollution Control Ordinance, various operation parameters as stated in Table 2.1 were monitored and checked against the Action/Limit Levels shown in Appendix A.

Table 2.1 Air Quality Monitoring Parameters and Frequency

Sources of Emission	Parameter	Frequency
Steam boilers L2, L4 & L5	Particulate	Once / year
	Particulate (Opacity)	Continuous
	SO ₂	Continuous
	NO _x expressed as NO ₂ (For L4 and L5 only)	Continuous
Fugitive Dust (Coal, PFA, Limestone, gypsum)	Total Suspended Particulate	Once every six days
Chimney emissions	Ambient air	Continuous at existing ambient air monitoring stations
	SO ₂	
	NO ₂	

2.2 Summary of Results and Observations

Monitoring of various parameters as listed in Table 2.1 above was conducted during the operation of Units L2, L4 and L5 in the reporting period. A summary of monitoring data is shown in Appendix B.

No Action/Limit Level exceedance was recorded in the reporting period.

Ambient air monitoring at Queen Mary Hospital was temporarily suspended since November 2013 due to the re-development of the Senior Staff Quarter building of

Queen Mary Hospital. A suitable site near Queen Mary Hospital was identified and endorsed by EPD. The site design work was in progress.

3. WATER QUALITY

3.1 Monitoring Requirements

According to the EIA Report/ Project Profile for the Projects, the current monitoring programme for the Lamma Power Station can cover the Projects and no additional EM&A measures are required besides those already in place. Hence, the EM&A work on water quality should strictly follow the relevant monitoring requirements stipulated in the discharge licence for Ash Lagoon issued under the Water Pollution Control Ordinance (WPCO).

Water quality monitoring was carried out for FGD Waste Water Treatment Plant (WWTP) in the reporting period. The parameters stated in Table 3.1 were monitored and checked against the Action/Limit Levels as given in Appendix A.

Table 3.1 Water Quality Monitoring Parameters and Frequencies

Item	Parameters	Frequencies
1	pH	Daily
2	Suspended Solids	Daily
3	Iron	Monthly
4	Barium	Monthly
5	Mercury	Monthly
6	Cadmium	Monthly
7	Cyanide	Monthly
8	Total Phosphorus	Monthly
9	Total Nitrogen	Monthly

3.2 Summary of Results and Observations

Monitoring of various parameters as listed in Table 3.1 above was carried out during the discharge of the WWTP in the reporting period. A summary of the data is shown in Appendix C.

The data recorded for the monitoring parameters were all below their corresponding Action/Limit Levels. No Action/Limit level exceedance was recorded in the reporting period. The effluent quality was generally satisfactory.

4. ENVIRONMENTAL AUDIT

4.1 Review of Environmental Monitoring Procedures

The environmental monitoring procedures were regularly reviewed by the Environmental Team. No modification to the existing monitoring procedures was recommended.

4.2 Assessment of Environmental Monitoring Results

Monitoring results for Air Quality and Water Quality

The environmental monitoring results for air quality, noise and water quality are presented in Sections 2, 3 and 4 respectively are summarized in Table 4.1.

Table 4.1 Summary of Action/Limit Level Exceedances on Monitoring Parameters

Item	Parameter Monitored	Monitoring Period	No. of Exceedances In		Event/Action Plan Implementation Status and Results
			Action Level	Limit Level	
Air					
1	Annual analysis of dust particulate emission rates at chimney stacks.	01/07/14-30/09/14	N.A.	0	Stack PM sampling tests for units L2, L4 & L5 were conducted.
2	Continuous monitoring of opacity, NOx, SO2 and CO2 in the flue gas at the chimney stacks	01/07/14-30/09/14	0	0	
3	TSP monitoring at Lamma Power Station Boundary (ie East Gate and Reservoir).	01/07/14-30/09/14	0	0	
4	Ambient SO2 & NOx monitoring at the Peak, Queen Mary Hospital, Victoria Road, Chung Hom Kok, Ap Lei Chau and	01/07/14-30/09/14	0	0	

Item	Parameter Monitored	Monitoring Period	No. of Exceedances In		Event/Action Plan Implementation Status and Results
			Action Level	Limit Level	
	Cheung Chau.				
Water					
1	pH in WWTP Effluent	01/07/14-30/09/14	0	0	
2	Suspended Solids in WWTP Effluent	01/07/14-30/09/14	0	0	
3	Iron in WWTP Effluent	01/07/14-30/09/14	0	0	
4	Barium in WWTP Effluent	01/07/14-30/09/14	0	0	
5	Mercury in WWTP Effluent	01/07/14-30/09/14	0	0	
6	Cadmium in WWTP Effluent	01/07/14-30/09/14	0	0	
7	Cyanide in WWTP Effluent	01/07/14-30/09/14	0	0	
8	Total Phosphorus in WWTP Effluent	01/07/14-30/09/14	0	0	
9	Total Nitrogen in WWTP Effluent	01/07/14-30/09/14	0	0	

Waste Management Records

The quantity of FGD gypsum and sludge collected for reuse by contractor in the reporting period are shown in Table 4.2.

Table 4.2 Amount of Gypsum and Sludge Collected for Reuse by Contractor

Period	Amount of Gypsum Collected	Amount of Sludge Collected
July 2014	7049.9 MT	0 MT
August 2014	9597.5 MT	208.3 MT
September 2014	11791.2 MT	0 MT

4.3 Status of Environmental Licensing and Permitting

All permits/licenses obtained as of September 2014 are summarised in Table 4.3.

Table 4.3 Summary of Environmental Licensing and Permit Status

Description	Permit / Licence No.	Valid Period		Status
		From	To	
Environmental Permit for Units L4/5 FGD Plants Retrofit	EP-248/2006	25/04/2006	-	Valid
Environmental Permit for Unit L2 FGD Plant Retrofit	EP-287/2007	02/10/2007	-	Valid
Specified Processes Licence issued under APCO	L-7-002(9)	01/01/2013	31/12/2014	Valid
WPCO discharge licence for Ash Lagoon	WT00011131-2011	15/12/2011	31/12/2016	Valid

4.4 Implementation Status of Environmental Mitigation Measures

Mitigation measures detailed in the EIA Report and EP are required to be implemented. A summary of the Environmental Mitigation Implementation Schedule (EMIS) is presented in Appendix D.

4.5 Implementation Status of Event/Action Plan

A list of specific actions in the event of exceedances of the various threshold levels for specific emission and discharge sources is given in Appendix A.

As no Action/Limit level exceedance was recorded, no action has been devised.

4.6 Implementation Status of Environmental Complaint Handling Procedures

During the reporting period, there was one (1) concern on “scum” from Lamma Power Station as summarized in Table 4.4.

Table 4.4 Environmental Complaints Received

Case Reference / Date, Time Received / Date, Time Concerned	Descriptions / Actions Taken	Conclusion / Status
<p><i>Reference:</i> EC140700191</p> <p><i>Received:</i> 03/07/2014 p.m.</p> <p><i>Concerned:</i> “recently” (02-03/07/2014)</p>	<p>EPD received a complaint from a citizen against scum near CW Outfall 1/2 of Lamma Power Station. The relevant EM&A records on the scum monitoring were reviewed with no abnormality identified. The EM&A requirements including the measures to eliminate scum were fulfilled. EPD was advised of the details accordingly. There was no further enquiry and the case was closed.</p>	<p>Nothing abnormal was identified. Case closed.</p>

Table 4.5 Outstanding Environmental Complaints Carried Over

Case Reference / Date, Time Received / Date, Time Concerned	Descriptions / Actions Taken	Conclusion / Status
Nil	N/A	N/A

5. FUTURE KEY ISSUES

5.1 Outage Plan for the coming 3 months

No major outage plan for the coming three months.

5.2 Key issues for the coming 3 months

Key issues to be considered in the coming 3 months include:

Air Impact

- To continuously carry out the air quality monitoring for Units L2, L4 and L5.

Water Impact

- To continuously carry out the water quality monitoring for FGD Waste Water Treatment Plant.

6. CONCLUSION

Environmental monitoring was performed as required in the reporting period from July to September 2014. All monitoring results were checked and reviewed.

No Action/Limit level exceedance on air quality parameters were recorded in the reporting period.

No Action/Limit level exceedance on water quality parameters were recorded in the reporting period.

Environmental mitigation measures recommended in the EIA Report and EP were implemented in the reporting period. One environmental concern against the operation of Lamma Power Station was received during the reporting period, for which nothing abnormal was identified at the Power Station. No prosecution was received for the Projects in the reporting period.

The environmental performance of the Projects was generally satisfactory.

Appendix A Event/Action Plans in Response to Exceedance of AL Levels

A.1 Air

Source of Emissions	Parameters to be Monitored	Frequency	Concentration Not to Be Exceeded	Action	Limit	Proposed Action
Steam boilers L2, L4 and L5	Particulate Particulate (Opacity) SO2 NOx expressed as NO2 (For L4 and L5 only)	once/year continuous continuous continuous	50 mg/Nm3 40% (bihourly) 200 mg/Nm3 (1h) 615 mg/Nm3 (1h)	- 35 190 585	50 40 200 615	ET Leader informs Generation Division at action level. Maintenance initiated. Temporary load shift until pollution control equipment repaired and reinstated. Report to EPD.
Fugitive dust (Coal, PFA, limestone, gypsum)	TSP	Once every six days.	260 (µg/m3) (24 hours)	-	260	Investigation of sources and additional dust suppression to be employed at Limit level. Frequency of monitoring to be increased as necessary.
Chimney emissions	Ambient air SO2 NO2	Continuous at existing ambient air monitoring stations	800 (µg/m3) (1h) 300 (µg/m3) (1h)	- -	800 300	ET to review data on post-hoc basis and check for possible power station contribution.

A.2 Water

Source of Discharges	Parameters to be Monitored	Frequency	Concentration Not to Be Exceeded	Action	Limit	Proposed Action
FGD Wastewater Treatment Plant	pH	Daily	6-9	-	6-9	If pH exceeds limit level, consideration to be given to adjust chemical dosing. ET Leader inform Generation Division and investigation be initiated to identify and remedy cause.
	Suspended Solids	Daily	30 mg/L	25	30	
	Iron	Monthly	4 mg/L	3.6	4	For all other parameters except pH, Generation Division to be informed, frequency of monitoring to be increased, and investigations to be initiated to identify cause and remedy if concentration exceeds action level. If problem persists to exceed the limit level, ET Leader verbally informs EPD and ensures remedial actions implemented.
	Barium	Monthly	1.5 mg/L	1.3	1.5	
	Mercury	Monthly	0.005 mg/L	0.0045	0.005	
	Cadmium	Monthly	0.005 mg/L	0.0045	0.005	
	Cyanide	Monthly	0.1 mg/L	0.09	0.1	
	Total Phosphorus	Monthly	8 mg/L	7.2	8	
	Total Nitrogen	Monthly	400 mg/L	360	400	

Appendix B

Air Quality Monitoring Results

B.1 Ambient Total Suspended Particulate Monitoring at Lamma Power Station

Date: Third Quarter of 2014 (July – September)

DATE	TSP CONCENTRATION ($\mu\text{g}/\text{m}^3$)		WEATHER INFORMATION (from Hong Kong Observatory)		
	Reservoir	East Gate	Mean Wind Speed (km/hr)	Prevailing Wind Dir. ($^{\circ}$)	Mean R.H. (%)
01/07/2014	27	28	20.6	170	88
07/07/2014	37	32	8.9	230	84
13/07/2014	22	18	17.4	210	80
19/07/2014	44	86	27.6	150	86
25/07/2014	24	30	17.6	230	77
31/07/2014	27	38	19.1	250	75
06/08/2014	21	20	12.9	220	87
12/08/2014	39	39	23.3	230	85
18/08/2014	36	44	22.8	230	76
24/08/2014	16	17	8.6	140	76
30/08/2014	24	24	16.9	060	75
05/09/2014	(1)	35	21.2	080	80
09/09/2014	32	-	10.4	220	76
11/09/2014	11	15	14.7	090	75
17/09/2014	42	87	32.7	150	88
23/09/2014	59	61	9.0	030	72
29/09/2014	29	30	8.3	230	73

Remark: (1) Breakdown of High Volume Air Sampler

	TSP ($\mu\text{g}/\text{m}^3$)
Action Level	-
Limit Level	260

Equipment used: Reservoir & East Gate : High Volume Air Sampler

B.2 Unit L2, L4 and L5 Stack Monitoring at Lamma Power Station

B.2.1 Monthly Summary of Stack NOx and SO2 for Unit L5

Date	Daily Maximum		
	SO2 concentration (mg/Nm3) #	NOx concentration (mg/Nm3) #	Opacity (%)
1/7/2014	98	434	20
2/7/2014	127	480	13
3/7/2014	99	431	23
4/7/2014	96	442	13
5/7/2014	89	428	13
6/7/2014	55	430	12
7/7/2014	60	409	13
8/7/2014	83	452	15
9/7/2014	71	433	14
10/7/2014	21	432	13
11/7/2014	47	465	15
12/7/2014	62	445	13
13/7/2014	82	438	12
14/7/2014	80	435	22
15/7/2014	71	445	15
16/7/2014	72	452	15
17/7/2014	53	441	15
18/7/2014	69	431	16
19/7/2014	25	453	16
20/7/2014	16	422	14
21/7/2014	14	444	15
22/7/2014	14	434	17
23/7/2014	28	429	18
24/7/2014	22	365	15
25/7/2014	15	357	19
26/7/2014	20	404	16
27/7/2014	23	404	16
28/7/2014	37	426	16
29/7/2014	79	408	18
30/7/2014	60	408	16
31/7/2014	89	380	16

Date	Daily Maximum		
	SO2 concentration (mg/Nm3) #	NOx concentration (mg/Nm3) #	Opacity (%)
1/8/2014	76	412	19
2/8/2014	104	475	16
3/8/2014	121	428	17
4/8/2014	106	333	17
5/8/2014	103	374	17
6/8/2014	82	421	15
7/8/2014	109	381	15
8/8/2014	100	378	15
9/8/2014	41	405	16
10/8/2014	27	399	14
11/8/2014	64	448	16
12/8/2014	27	368	15
13/8/2014	28	422	14
14/8/2014	73	369	15
15/8/2014	126	465	14
16/8/2014	103	389	14
17/8/2014	78	407	13
18/8/2014	106	451	14
19/8/2014	102	465	14
20/8/2014	63	439	14
21/8/2014	98	483	15
22/8/2014	94	443	15
23/8/2014	72	419	15
24/8/2014	18	440	14
25/8/2014	30	429	16
26/8/2014	66	272	16
27/8/2014	61	370	16
28/8/2014	101	392	16
29/8/2014	114	412	16
30/8/2014	93	457	16
31/8/2014	75	391	16

Date	Daily Maximum		
	SO2 concentration (mg/Nm3) [#]	NOx concentration (mg/Nm3) [#]	Opacity (%)
1/9/2014	74	472	16
2/9/2014	56	411	15
3/9/2014	68	376	16
4/9/2014	59	332	15
5/9/2014	27	323	16
6/9/2014	63	400	18
7/9/2014	67	410	19
8/9/2014	26	406	19
9/9/2014	22	432	15
10/9/2014	43	407	17
11/9/2014	82	421	16
12/9/2014	87	464	18
13/9/2014	97	434	15
14/9/2014	98	494	15
15/9/2014	110	434	16
16/9/2014	98	447	16
17/9/2014	80	450	17
18/9/2014	102	441	18
19/9/2014	115	440	17
20/9/2014	100	432	17
21/9/2014	120	479	18
22/9/2014	147	450	18
23/9/2014	83	450	17
24/9/2014	53	464	18
25/9/2014	50	464	17
26/9/2014	84	395	19
27/9/2014	79	403	18
28/9/2014	86	433	16
29/9/2014	103	421	19
30/9/2014	47	429	18

Note: # - Hourly average value. Expressed as at 0°C, 101.325kPa, dry and corrected to 12% CO₂ condition.

B.2.2 Monthly Summary of Stack NOx and SO2 for Unit L4

Date	Daily Maximum		
	SO2 concentration (mg/Nm3) #	NOx concentration (mg/Nm3) #	Opacity (%)
1/7/2014	96	475	15
2/7/2014	120	476	16
3/7/2014	72	459	23
4/7/2014	86	457	23
5/7/2014	45	382	20
6/7/2014	*	*	*
7/7/2014	58	408	22
8/7/2014	52	447	18
9/7/2014	31	421	21
10/7/2014	31	396	21
11/7/2014	28	380	21
12/7/2014	52	397	22
13/7/2014	*	*	*
14/7/2014	73	394	22
15/7/2014	59	437	21
16/7/2014	67	422	21
17/7/2014	44	448	20
18/7/2014	82	407	22
19/7/2014	55	371	22
20/7/2014	21	367	21
21/7/2014	20	377	23
22/7/2014	49	418	21
23/7/2014	70	405	24
24/7/2014	72	343	24
25/7/2014	53	369	24
26/7/2014	57	345	21
27/7/2014	54	322	16
28/7/2014	60	340	23
29/7/2014	82	399	26
30/7/2014	54	388	18
31/7/2014	105	397	18

Date	Daily Maximum		
	SO2 concentration (mg/Nm3) #	NOx concentration (mg/Nm3) #	Opacity (%)
1/8/2014	115	426	19
2/8/2014	99	433	19
3/8/2014	89	448	19
4/8/2014	98	440	25
5/8/2014	67	448	18
6/8/2014	87	434	17
7/8/2014	87	382	17
8/8/2014	97	429	24
9/8/2014	96	463	17
10/8/2014	62	383	17
11/8/2014	74	439	19
12/8/2014	56	467	18
13/8/2014	56	434	18
14/8/2014	66	406	27
15/8/2014	100	457	14
16/8/2014	90	390	16
17/8/2014	80	454	14
18/8/2014	119	467	15
19/8/2014	115	443	19
20/8/2014	89	479	18
21/8/2014	122	461	19
22/8/2014	83	435	22
23/8/2014	65	400	20
24/8/2014	30	442	22
25/8/2014	72	410	22
26/8/2014	74	310	22
27/8/2014	22	365	22
28/8/2014	60	432	25
29/8/2014	131	408	19
30/8/2014	*	*	*
31/8/2014	*	*	*

Date	Daily Maximum		
	SO2 concentration (mg/Nm3) [#]	NOx concentration (mg/Nm3) [#]	Opacity (%)
1/9/2014	30	402	24
2/9/2014	21	398	20
3/9/2014	27	396	22
4/9/2014	29	401	19
5/9/2014	35	416	20
6/9/2014	63	392	21
7/9/2014	46	327	21
8/9/2014	41	398	21
9/9/2014	44	388	19
10/9/2014	28	425	23
11/9/2014	87	442	20
12/9/2014	107	398	22
13/9/2014	61	360	20
14/9/2014	67	386	19
15/9/2014	92	366	26
16/9/2014	120	426	23
17/9/2014	67	399	24
18/9/2014	73	491	22
19/9/2014	124	377	22
20/9/2014	117	416	23
21/9/2014	86	441	22
22/9/2014	125	488	25
23/9/2014	90	451	26
24/9/2014	92	379	26
25/9/2014	73	474	25
26/9/2014	78	420	26
27/9/2014	98	438	25
28/9/2014	108	400	23
29/9/2014	97	401	25
30/9/2014	82	400	24

Note: # - Hourly average value. Expressed as at 0°C, 101.325kPa, dry and corrected to 12% CO₂ condition.

* - Unit L4 was not on load.

B.2.3 Monthly Summary of Stack SO2 for Unit L2

Date	Daily Maximum	
	SO2 concentration (mg/Nm3) #	Opacity (%)
1/7/2014	*	*
2/7/2014	*	*
3/7/2014	111	17
4/7/2014	97	17
5/7/2014	92	17
6/7/2014	76	17
7/7/2014	58	18
8/7/2014	62	19
9/7/2014	94	19
10/7/2014	44	19
11/7/2014	79	21
12/7/2014	58	21
13/7/2014	62	22
14/7/2014	80	22
15/7/2014	56	21
16/7/2014	51	22
17/7/2014	52	22
18/7/2014	69	23
19/7/2014	67	23
20/7/2014	22	22
21/7/2014	18	21
22/7/2014	13	20
23/7/2014	12	19
24/7/2014	32	18
25/7/2014	20	19
26/7/2014	*	*
27/7/2014	*	*
28/7/2014	15	19
29/7/2014	62	21
30/7/2014	120	20
31/7/2014	84	19

Date	Daily Maximum	
	SO2 concentration (mg/Nm3) [#]	Opacity (%)
1/8/2014	69	20
2/8/2014	*	*
3/8/2014	*	*
4/8/2014	90	19
5/8/2014	85	19
6/8/2014	102	20
7/8/2014	75	21
8/8/2014	100	19
9/8/2014	82	19
10/8/2014	49	20
11/8/2014	59	21
12/8/2014	56	19
13/8/2014	34	19
14/8/2014	*	*
15/8/2014	36	17
16/8/2014	100	19
17/8/2014	124	17
18/8/2014	162	17
19/8/2014	124	17
20/8/2014	118	15
21/8/2014	*	*
22/8/2014	*	*
23/8/2014	*	*
24/8/2014	*	*
25/8/2014	134	20
26/8/2014	79	18
27/8/2014	58	18
28/8/2014	83	20
29/8/2014	113	18
30/8/2014	136	20
31/8/2014	108	18

Date	Daily Maximum	
	SO2 concentration (mg/Nm3) [#]	Opacity (%)
1/9/2014	58	19
2/9/2014	33	18
3/9/2014	24	19
4/9/2014	22	18
5/9/2014	24	18
6/9/2014	*	*
7/9/2014	*	*
8/9/2014	22	23
9/9/2014	21	20
10/9/2014	44	21
11/9/2014	101	18
12/9/2014	110	26
13/9/2014	*	*
14/9/2014	*	*
15/9/2014	89	17
16/9/2014	*	*
17/9/2014	93	17
18/9/2014	75	18
19/9/2014	80	20
20/9/2014	*	*
21/9/2014	*	*
22/9/2014	*	*
23/9/2014	*	*
24/9/2014	*	*
25/9/2014	*	*
26/9/2014	*	*
27/9/2014	*	*
28/9/2014	*	*
29/9/2014	73	22
30/9/2014	116	20

Note: # - Hourly average value. Expressed as at 0°C, 101.325kPa, dry and corrected to 12% CO₂ condition.

* - Unit L2 was not on load.

B.2.4 Summary of Annual Stack Particulate Sampling

Unit	Date	Results (mg/Nm ³)
L2	18/08/2014	8
L4	12/09/2014	8
L5	22/09/2014	7

Monitoring Equipment: APEX model XC-522-V (Manual stack sampling system)

B.3 Ambient SO₂ and NO₂ monitoring Data at Southern District and Cheung Chau

THE HONGKONG ELECTRIC COMPANY, LTD.
AIR QUALITY DATA MONTHLY TIME SERIES REPORT
MONTH: JULY

STATION : VICTORIA PEAK
POLLUTANT : SULPHUR DIOXIDE

YEAR : 2014
UNIT : MICROGRAMS/CUBIC METER

DAY	1	2	3	4	5	6	7	8	9	10	11	12	13	14	15	16	17	18	19	20	21	22	23	24	MEAN
1	0	0	0	0	0	0	0	0	2	0	2	4	4	2	0	2	2	0	2	1	0	2	1	3	1
2	1	4	4	1	0	0	0	1	2	4	4	2	3	3	2	3	3	3	3	2	2	1	4	5	2
3	1	1	0	0	0	0	2	1	1	1	0	0	7	34	44	56	24	7	1	1	4	1	1	4	8
4	4	3	2	3	1	1	1	1	2	10	13	38	68	56	72	33	9	6	5	7	7	7	6	5	15
5	3	4	3	4	3	3	2	3	3	3	2	2	1	13	8	1	12	3	2	2	4	6	3	3	4
6	3	4	3	4	3	5	10	7	8	3	2	3	3	9	7	4	6	4	1	4	11	8	10	9	5
7	10	11	4	5	3	1	26	13	7	33	21	19	7	2	2	0	3	1	3	1	7	1	0	3	8
8	12	14	10	16	9	10	28	64	26	19	31	34	37	43	39	31	18	9	8	11	11	10	9	6	21
9	4	9	6	3	3	3	3	2	2	2	10	10	3	7	12	16	8	9	11	13	6	4	5	3	6
10	8	4	5	2	1	1	1	2	2	11	1	4	16	17	5	7	7	4	6	4	5	16	8	8	6
11	3	5	8	13	7	1	1	1	1	4	2	5	2	5	1	1	9	7	3	3	4	10	12	8	5
12	3	2	2	1	0	0	5	16	10	12	8	6	11	5	7	9	7	4	2	1	3	6	6	5	5
13	2	1	5	5	4	4	2	1	1	5	2	1	3	7	5	5	4	3	3	3	3	1	2	2	3
14	3	2	3	1	1	1	1	1	1	8	3	5	5	2	1	1	1	1	5	3	2	1	2	3	2
15	3	6	6	4	7	4	2	2	2	3	2	2	6	6	3	4	4	3	3	4	4	7	8	11	4
16	11	14	10	6	10	7	10	16	7	5	4	3	2	1	1	1	1	1	0	0	1	2	2	1	5
17	1	0	0	0	0	0	0	1	0	0	0	0	0	0	0	0	0	0	0	0	0	0	0	0	0
18	0	0	0	0	0	0	0	0	0	0	0	0	0	0	0	0	0	0	0	0	0	0	0	0	0
19	0	0	0	0	0	0	0	0	0	0	0	0	0	0	0	0	0	0	0	0	0	0	0	0	0
20	0	0	0	0	0	0	0	0	0	0	0	0	0	0	0	0	0	0	0	0	0	1	2	3	0
21	2	2	2	2	2	2	3	9	29	40	40	30	23	28	22	15	17	20	13	21	17	15	17	17	16
22	18	21	16	18	17	19	19	17	17	24	79	92	82	48	13	5	20	6	3	2	4	4	4	3	26
23	6	9	12	14	14	15	15	21	14	12	12	18	11	6	7	6	3	3	2	2	2	2	1	2	9
24	0	0	0	1	0	1	1	0	0	0	1	0	0	0	0	0	1	1	2	1	0	1	0	1	0
25	1	2	1	1	1	1	0	0	1	0	1	0	0	1	9	5	7	4	6	3	2	2	2	1	2
26	0	0	0	0	0	0	0	0	0	0	0	1	0	0	0	0	0	0	0	0	0	0	0	0	0
27	0	0	0	0	0	0	0	0	0	0	0	0	0	0	0	0	0	0	0	0	0	1	1	0	0
28	0	0	0	0	1	0	0	0	0	3	5	1	4	2	2	0	3	10	10	23	15	3	7	5	4
29	3	1	2	2	3	7	16	13	37	35	28	33	28	6	2	1	1	1	0	1	8	6	5	6	10
30	3	3	3	1	2	1	1	1	2	11	45	32	24	11	5	10	11	12	13	9	7	12	11	6	10
31	6	6	4	2	3	5	4	6	6	4	5	8	12	17	10	4	5	5	2	2	1	2	4	2	5

MONTHLY STATISTICS:

GEOM	ARITH-----PERCENTILES-----								-----RANGE-----				STN GEOM	PERCENT	NO. OF TIMES	
MEAN	MEDIAN	MEAN	50	90	95	98	99	1-HR	24-HR	DEVIATION	VALID DATA	ABOVE OBJECTIVE				
4	3	6	3	15	24	39	56	0	-	92	0	-	26	3	100	0

- NOTES: 1. FLAGS FOR INVALID DATA :
- D: DYNAMIC CALIBRATION
 - T: TELEMETRY/DATALOGGR FAULT
 - M: MAINTENANCE OR ANALYZER FAULT
 - P: POWER FAILURE

THE HONGKONG ELECTRIC COMPANY, LTD.
AIR QUALITY DATA MONTHLY TIME SERIES REPORT
MONTH: JULY

STATION : VICTORIA PEAK
POLLUTANT : NITROGEN DIOXIDE

YEAR : 2014
UNIT : MICROGRAMS/CUBIC METER

DAY	1	2	3	4	5	6	7	8	9	10	11	12	13	14	15	16	17	18	19	20	21	22	23	24	MEAN
1	0	0	0	0	0	0	0	1	9	4	5	9	5	4	8	16	10	8	20	20	9	18	12	9	7
2	6	12	8	0	0	0	0	5	4	9	9	5	7	8	10	12	14	15	12	11	11	7	14	13	8
3	3	1	1	0	0	1	7	7	2	3	3	3	21	17	23	15	11	8	9	16	13	12	12	8	
4	9	4	1	3	0	0	2	1	3	11	10	21	38	29	37	20	12	9	8	19	20	28	20	7	13
5	4	2	1	3	3	0	2	4	5	8	4	10	1	20	10	2	25	14	12	16	25	27	20	23	10
6	6	5	1	1	0	7	12	4	5	6	4	7	9	15	11	12	15	9	9	33	47	70	53	10	15
7	11	11	6	6	5	0	23	31	21	41	47	68	46	67	31	22	30	19	49	25	72	15	3	16	28
8	33	16	6	5	4	10	47	69	33	49	74	75	56	56	63	43	25	16	18	29	32	42	26	23	35
9	4	22	2	0	3	6	6	7	7	10	19	14	8	23	34	47	24	29	37	34	37	18	14	5	17
10	6	1	1	0	3	5	0	17	10	21	6	15	27	32	12	13	14	22	16	17	22	26	18	14	13
11	8	4	5	11	5	0	1	8	6	14	10	6	4	9	4	10	12	10	8	14	20	25	28	15	10
12	9	3	2	0	0	0	9	18	10	11	8	9	8	6	9	10	11	10	10	7	14	24	25	7	9
13	4	0	2	2	4	1	5	2	4	8	6	3	6	7	4	10	6	6	15	11	14	19	18	7	7
14	4	0	0	0	0	0	1	3	2	11	14	11	6	3	1	3	5	13	10	11	10	13	9	7	6
15	3	6	4	2	10	1	0	2	2	3	5	1	5	8	7	9	6	5	9	12	15	17	35	20	8
16	20	M	13	6	11	4	8	13	12	13	8	19	13	16	14	23	14	19	8	3	2	2	0	1	11
17	0	0	3	1	1	3	4	7	7	9	9	6	6	8	9	8	5	3	5	0	2	0	0	0	4
18	0	0	0	0	0	0	0	0	1	6	12	7	4	15	17	27	22	13	1	0	0	0	0	0	5
19	0	0	0	0	0	0	0	2	5	8	6	10	7	9	8	16	26	23	6	7	4	12	1	0	6
20	0	0	0	0	1	1	1	0	0	0	0	0	0	0	0	0	0	1	0	7	3	5	3	9	1
21	10	3	0	1	6	11	13	27	35	34	41	46	48	53	39	27	30	43	44	71	61	81	113	32	36
22	47	32	21	16	73	39	8	6	11	21	46	46	50	45	35	25	30	33	17	10	11	24	13	14	28
23	11	6	7	8	13	18	21	26	18	14	11	13	9	8	7	8	7	8	6	9	7	27	6	2	11
24	0	0	0	0	0	0	2	0	2	3	8	5	1	1	2	6	14	16	15	10	11	15	3	6	5
25	23	27	10	1	9	8	0	1	6	3	4	2	1	7	32	23	23	15	18	19	20	26	20	4	13
26	7	3	2	0	0	0	0	1	10	17	17	26	29	30	23	26	14	8	5	6	2	1	6	0	10
27	0	1	0	0	0	0	1	1	2	3	0	0	0	6	1	0	0	0	1	3	1	3	4	3	1
28	1	2	0	0	1	4	5	0	2	7	15	17	11	11	23	19	20	25	29	41	21	8	21	26	13
29	16	2	0	0	0	2	18	18	33	46	43	44	33	17	22	16	20	20	18	13	19	11	2	3	17
30	8	M	0	0	1	5	6	9	32	46	54	42	24	24	24	19	19	24	46	46	51	62	37	14	26
31	7	4	1	0	3	8	3	4	8	9	8	16	11	7	5	3	9	14	13	17	16	11	9	1	8

MONTHLY STATISTICS:

GEOM	ARITH -----PERCENTILES-----										RANGE-----				STN GEOM	PERCENT	NO. OF TIMES
MEAN	MEDIAN	MEAN	50	90	95	98	99	1-HR		24-HR		DEVIATION	VALID DATA	ABOVE OBJECTIVE			
9	8	13	8	31	45	56	70	0	-	113	1	-	36	3	100	0	

NOTES: 1. FLAGS FOR INVALID DATA :
D: DYNAMIC CALIBRATION
T: TELEMETRY/DATALOGGR FAULT
M: MAINTENANCE OR ANALYZER FAULT
P: POWER FAILURE

THE HONGKONG ELECTRIC COMPANY, LTD.
AIR QUALITY DATA MONTHLY TIME SERIES REPORT
MONTH: AUGUST

STATION : VICTORIA PEAK
POLLUTANT : SULPHUR DIOXIDE

YEAR : 2014
UNIT : MICROGRAMS/CUBIC METER

DAY	1	2	3	4	5	6	7	8	9	10	11	12	13	14	15	16	17	18	19	20	21	22	23	24	MEAN
1	1	0	2	5	3	3	3	7	10	11	18	20	22	23	18	10	11	3	2	1	3	2	0	14	8
2	14	32	2	3	4	4	6	2	1	2	2	3	2	2	4	6	12	12	7	5	4	4	3	7	6
3	3	0	0	1	0	0	0	0	0	4	5	2	5	4	7	4	5	6	2	5	3	1	5	1	3
4	1	3	3	4	2	2	2	3	3	1	6	3	5	37	12	20	12	11	17	11	9	5	2	1	7
5	1	1	1	3	2	0	1	1	1	20	9	11	5	8	0	0	1	5	2	1	2	4	5	3	4
6	7	1	0	0	0	0	0	4	3	4	6	0	0	0	1	3	26	9	4	2	3	2	0	1	3
7	1	2	2	1	1	2	3	2	2	6	5	6	4	2	7	4	2	3	1	1	2	0	2	3	3
8	1	2	3	3	1	0	1	4	7	3	13	8	5	2	2	2	1	1	2	2	3	6	2	2	3
9	2	1	3	1	1	2	1	1	3	2	3	4	3	2	4	4	9	5	2	4	4	2	2	7	3
10	3	1	1	0	0	1	0	0	3	2	3	2	2	0	0	2	1	2	2	3	1	1	5	1	2
11	1	1	0	0	0	0	0	0	0	1	1	0	0	1	2	3	0	1	1	1	1	0	1	1	1
12	0	0	0	1	0	0	0	0	0	0	0	1	0	0	0	2	0	0	0	0	0	0	0	0	0
13	0	0	0	0	0	0	0	0	0	0	4	0	0	3	0	1	0	5	9	2	0	0	0	2	1
14	1	0	0	0	1	1	0	0	0	1	1	1	1	1	0	1	1	0	0	0	0	0	0	1	0
15	0	1	0	2	0	1	1	M	M	M	0	0	1	1	1	2	5	8	4	1	1	2	0	1	2
16	0	0	0	0	0	0	0	0	1	2	1	1	1	1	2	2	2	2	1	0	1	0	1	1	1
17	0	0	0	0	1	1	2	2	0	0	0	0	0	0	0	1	1	3	4	1	3	5	2	5	1
18	5	3	2	1	1	3	5	6	9	5	3	1	2	1	2	1	6	3	3	3	3	1	2	2	3
19	1	1	1	0	0	1	0	0	0	0	2	1	1	3	4	0	0	2	1	0	0	0	0	0	1
20	0	1	0	1	2	1	0	0	2	10	0	0	0	2	2	0	9	3	0	0	0	3	0	0	2
21	0	1	2	1	0	0	1	1	0	1	1	1	1	1	3	2	2	8	7	4	3	3	4	2	2
22	4	2	1	1	2	5	0	0	0	1	1	1	1	3	8	8	5	5	4	5	2	5	4	6	3
23	5	5	8	3	2	1	1	5	9	6	D	1	3	3	2	1	2	1	4	1	0	2	0	4	3
24	6	6	3	2	9	7	5	10	5	3	5	6	6	2	1	1	3	3	3	2	3	3	3	1	4
25	1	2	0	0	0	0	0	0	2	1	0	0	0	0	0	0	0	2	1	0	2	1	2	1	1
26	1	1	2	2	1	0	1	1	1	1	1	0	0	0	0	0	0	0	0	0	0	0	0	0	1
27	0	0	0	0	0	1	0	1	1	2	2	1	2	0	0	0	0	0	0	0	0	0	0	0	0
28	0	0	0	0	0	0	0	0	1	0	0	0	0	0	0	0	0	0	0	0	0	1	0	3	0
29	1	0	0	0	0	0	0	0	0	1	1	0	0	1	1	1	1	0	0	0	0	0	1	0	0
30	1	2	1	1	2	2	2	3	4	2	1	1	1	1	1	0	0	0	0	1	0	0	0	0	1
31	0	0	0	0	0	0	0	1	1	0	0	1	0	0	0	0	0	0	0	0	0	1	0	1	0

MONTHLY STATISTICS:

GEOM	ARITH-----PERCENTILES-----							-----RANGE-----				STN GEOM	PERCENT	NO. OF TIMES		
MEAN	MEDIAN	MEAN	50	90	95	98	99	1-HR		24-HR		DEVIATION	VALID DATA	ABOVE OBJECTIVE		
2	1	2	1	5	8	12	19	0	-	37	0	-	8	2	99	0

- NOTES: 1. FLAGS FOR INVALID DATA :
- D: DYNAMIC CALIBRATION
 - T: TELEMETRY/DATALOGGR FAULT
 - M: MAINTENANCE OR ANALYZER FAULT
 - P: POWER FAILURE

THE HONGKONG ELECTRIC COMPANY, LTD.
AIR QUALITY DATA MONTHLY TIME SERIES REPORT
MONTH: AUGUST

STATION : VICTORIA PEAK
POLLUTANT : NITROGEN DIOXIDE

YEAR : 2014
UNIT : MICROGRAMS/CUBIC M

DAY	1	2	3	4	5	6	7	8	9	10	11	12	13	14	15	16	17	18	19	20	21	22	23	24
1	0	0	0	3	2	2	7	6	12	17	19	25	27	26	22	11	49	13	40	30	39	23	11	42
2	30	63	0	2	3	6	15	4	1	4	9	7	5	1	6	7	21	26	24	25	21	24	22	13
3	12	0	0	1	0	0	0	1	5	3	5	4	7	6	7	4	13	20	13	25	26	32	35	4
4	1	0	0	0	0	0	1	7	9	2	19	7	11	41	17	32	26	27	34	29	26	31	13	11
5	11	0	1	0	0	0	2	7	5	29	20	41	61	51	38	28	20	20	17	4	5	23	5	17
6	15	2	2	4	0	0	4	13	17	20	25	2	1	4	16	17	39	31	30	22	23	23	6	3
7	6	3	1	1	0	4	3	7	14	30	21	14	6	1	8	15	8	10	7	8	6	4	18	4
8	1	0	3	4	0	0	0	5	8	7	12	6	3	5	1	2	4	4	8	9	25	38	35	3
9	4	9	10	0	0	0	0	2	6	5	5	4	4	4	12	19	38	16	18	20	22	23	26	24
10	16	3	1	0	0	0	0	0	6	7	6	3	5	3	1	9	9	7	29	30	11	19	28	10
11	12	6	0	0	0	0	0	0	1	5	4	3	1	5	4	14	7	11	8	19	26	20	10	6
12	1	0	0	7	1	0	0	0	2	4	4	5	2	4	4	8	7	9	8	5	5	11	7	2
13	18	4	0	0	0	0	1	1	0	7	57	18	13	32	17	14	4	25	38	24	5	13	9	26
14	10	2	1	3	11	3	2	6	6	7	11	10	6	15	2	15	7	3	14	8	5	19	10	4
15	9	27	6	25	13	34	39	M	M	M	7	4	2	5	8	11	22	28	20	35	38	42	16	4
16	1	0	0	0	0	0	0	0	3	7	4	3	2	3	4	10	7	6	9	7	6	17	26	2
17	0	3	2	0	0	0	2	2	0	1	2	1	1	1	1	2	5	23	21	14	22	39	36	16
18	14	4	1	0	0	2	6	10	8	3	3	2	1	0	3	5	17	15	13	14	22	21	15	5
19	6	6	1	0	0	14	1	0	9	6	13	7	5	17	13	4	4	28	12	2	2	13	1	1
20	0	5	12	13	11	4	0	0	15	34	15	10	5	17	19	10	24	28	10	9	1	16	1	1
21	1	1	8	1	0	0	7	6	11	9	18	7	13	7	12	7	11	16	19	20	30	29	40	14
22	11	3	0	0	0	6	0	3	3	7	7	7	5	10	17	16	12	13	14	31	18	36	42	18
23	14	10	14	3	0	0	0	4	10	8	D	7	4	10	5	7	3	4	16	11	19	36	23	18
24	18	16	6	3	13	11	5	9	5	9	6	10	12	9	8	11	15	8	19	20	3	3	7	6
25	4	3	0	0	0	5	3	6	18	9	8	18	11	10	13	11	6	9	5	3	1	1	1	1
26	5	2	4	3	1	0	1	2	4	10	10	6	1	2	2	3	6	2	0	0	1	0	0	1
27	0	M	0	0	0	0	1	7	7	9	7	6	3	5	4	2	0	1	0	0	0	0	0	0
28	0	0	0	0	0	0	0	0	8	11	7	7	0	10	4	9	9	4	1	1	0	2	1	7
29	4	1	0	1	2	2	0	1	1	4	8	5	4	14	10	14	14	10	8	16	12	35	37	3
30	11	8	1	1	2	2	4	13	26	33	7	9	11	9	9	11	15	5	0	1	0	1	1	0
31	0	0	0	0	0	0	0	0	0	0	0	0	0	0	0	0	0	0	1	0	0	1	0	1

MONTHLY STATISTICS:

GEOM	ARITH -----PERCENTILES-----								-----RANGE-----				STN GEOM	PERCENT	NO. OF TIMES	
MEAN	MEDIAN	MEAN	50	90	95	98	99	1-HR		24-HR		DEVIATION	VALID DATA	ABOVE OBJECTIVE		
7	6	9	6	24	31	39	42	0	-	63	0	-	19	3	99	0

- NOTES: 1. FLAGS FOR INVALID DATA :
- D: DYNAMIC CALIBRATION
 - T: TELEMETRY/DATALOGGR FAULT
 - M: MAINTENANCE OR ANALYZER FAULT
 - P: POWER FAILURE

THE HONGKONG ELECTRIC COMPANY, LTD.
AIR QUALITY DATA MONTHLY TIME SERIES REPORT
MONTH: SEPTEMBER

STATION : VICTORIA PEAK
POLLUTANT : SULPHUR DIOXIDE

YEAR : 2014
UNIT : MICROGRAMS/CUBIC METER

DAY	1	2	3	4	5	6	7	8	9	10	11	12	13	14	15	16	17	18	19	20	21	22	23	24	MEAN
1	0	0	0	0	0	0	0	0	1	1	0	0	0	0	0	1	1	5	0	0	0	0	0	0	0
2	4	0	0	0	0	0	0	0	8	38	28	15	17	25	29	23	16	12	15	10	9	7	5	3	11
3	1	1	2	2	3	4	2	2	3	6	7	19	19	34	17	5	4	3	2	2	1	1	1	2	6
4	0	5	5	8	12	20	30	24	27	29	33	35	30	10	5	0	1	6	4	8	8	7	8	5	13
5	2	1	1	1	1	1	0	0	0	0	1	0	0	0	0	0	0	0	0	0	0	0	0	1	0
6	0	2	3	2	0	1	1	2	1	0	1	1	2	3	3	2	3	3	3	6	6	4	3	2	2
7	2	1	1	1	0	0	0	1	2	1	1	1	2	1	0	0	0	0	0	0	0	0	0	0	1
8	0	0	0	0	0	0	0	0	0	0	6	3	0	0	2	10	14	11	3	7	6	3	1	5	3
9	6	7	4	4	1	2	2	3	2	3	5	5	6	5	3	7	9	6	7	2	2	4	13	11	5
10	7	4	5	5	3	2	3	3	3	21	28	25	19	12	11	8	20	13	12	9	9	9	7	6	10
11	3	4	3	3	2	4	2	3	4	2	1	0	0	0	0	0	0	0	0	1	2	0	1	0	1
12	0	0	0	0	0	0	0	0	0	0	0	0	0	0	0	0	0	0	0	0	0	0	0	0	0
13	0	0	0	0	0	0	0	0	1	1	0	0	0	0	0	0	0	0	0	1	0	0	0	1	0
14	0	0	0	0	0	0	0	0	0	0	0	0	0	0	0	0	0	1	3	2	2	3	2	T	1
15	2	1	2	11	11	10	8	7	4	3	M	2	3	3	3	2	3	2	1	1	1	1	1	0	4
16	0	0	0	0	0	0	0	0	0	0	0	0	0	0	0	0	0	0	0	0	0	0	0	0	0
17	0	0	0	0	0	0	0	0	0	0	0	0	0	0	0	0	0	0	0	0	0	0	0	0	0
18	0	0	0	3	1	1	0	1	1	6	20	31	18	12	24	17	22	17	16	18	12	11	10	T	10
19	14	14	14	9	13	20	34	49	48	44	44	43	44	38	43	19	19	41	43	39	28	29	28	16	31
20	32	19	7	5	4	4	3	3	2	1	3	7	4	3	2	2	5	4	6	3	5	7	6	3	6
21	1	1	2	2	5	5	7	7	7	12	7	4	3	3	5	7	9	7	8	9	9	8	7	5	6
22	4	3	3	4	5	5	5	5	7	8	11	20	31	20	21	8	17	24	18	16	15	33	31	29	14
23	20	20	14	10	7	7	11	9	11	11	30	16	12	15	10	14	13	9	13	9	9	12	9	11	13
24	8	9	10	22	21	15	16	27	34	32	21	30	50	36	30	30	26	20	19	20	22	15	15	7	22
25	6	7	13	14	14	20	14	17	16	24	29	30	35	27	30	20	16	14	12	12	8	9	9	5	17
26	9	7	14	10	5	3	4	3	6	25	M	18	M	13	12	7	13	12	6	6	5	7	7	3	9
27	2	2	4	4	6	4	5	4	7	29	57	22	5	6	3	3	6	11	8	5	6	5	6	5	9
28	5	7	6	2	1	1	1	7	6	2	32	33	17	5	4	4	3	5	5	6	6	3	2	1	7
29	2	7	6	4	5	6	5	6	22	12	14	22	12	15	18	24	18	18	11	7	9	6	7	7	11
30	3	4	7	12	16	19	8	14	17	35	37	31	35	32	38	49	38	35	44	32	7	12	11	11	23

MONTHLY STATISTICS:

GEOM	ARITH-----PERCENTILES-----							-----RANGE-----				STN GEOM	PERCENT	NO. OF TIMES		
MEAN	MEDIAN	MEAN	50	90	95	98	99	1-HR		24-HR	DEVIATION	VALID DATA	ABOVE OBJECTIVE			
7	4	8	4	22	31	38	44	0	-	57	0	-	31	3	99	0

NOTES: 1. FLAGS FOR INVALID DATA :
D: DYNAMIC CALIBRATION
T: TELEMETRY/DATALOGGR FAULT
M: MAINTENANCE OR ANALYZER FAULT
P: POWER FAILURE

THE HONGKONG ELECTRIC COMPANY, LTD.
AIR QUALITY DATA MONTHLY TIME SERIES REPORT
MONTH: SEPTEMBER

STATION : VICTORIA PEAK
POLLUTANT : NITROGEN DIOXIDE

YEAR : 2014
UNIT : MICROGRAMS/CUBIC METER

DAY	1	2	3	4	5	6	7	8	9	10	11	12	13	14	15	16	17	18	19	20	21	22	23	24	MEAN
1	0	0	0	0	0	0	0	1	10	15	14	9	3	7	7	9	7	11	11	3	6	6	7	7	6
2	15	1	0	1	8	3	2	4	19	32	21	22	21	34	33	36	27	31	41	29	40	38	21	7	20
3	3	1	1	1	3	5	3	3	8	12	16	25	30	44	28	13	9	10	12	13	12	8	6	8	11
4	4	17	21	26	29	45	55	46	51	90	107	104	118	84	35	19	40	143	60	13	12	9	5	1	47
5	0	0	0	0	0	0	0	4	19	11	10	8	1	10	11	8	10	5	0	7	3	24	31	9	7
6	2	6	1	0	0	0	6	15	28	31	34	28	10	13	14	14	17	39	32	35	8	0	0	1	14
7	0	0	0	0	0	0	0	7	2	3	1	2	1	0	0	0	0	0	0	0	0	0	0	0	1
8	0	0	0	0	0	0	0	1	3	6	10	6	1	3	9	19	24	22	17	12	16	15	6	19	8
9	10	10	2	1	0	2	2	6	3	4	15	19	24	9	4	13	10	6	14	13	11	25	27	25	11
10	9	M	3	2	0	1	6	2	9	23	28	35	24	18	15	15	21	18	28	18	16	17	16	15	15
11	9	5	1	1	0	3	2	5	11	14	9	12	6	8	4	15	10	5	2	6	8	5	4	6	6
12	2	0	0	0	0	0	0	1	10	8	8	6	5	6	8	12	11	1	9	27	28	15	7	0	7
13	0	0	0	0	0	1	3	3	5	6	5	2	2	3	4	3	4	5	0	5	7	2	0	1	3
14	0	0	0	0	3	4	9	8	5	0	0	0	1	0	0	1	7	20	48	32	2	10	20	T	7
15	13	7	7	37	33	33	26	34	31	30	M	25	22	29	25	28	30	10	4	0	0	0	0	0	18
16	0	0	0	0	0	0	0	0	0	0	0	0	0	0	0	0	0	0	0	0	0	0	0	0	0
17	0	0	0	0	0	0	0	1	4	5	6	7	6	4	8	8	9	15	9	5	3	3	1	0	4
18	0	0	0	4	0	0	5	14	8	19	31	37	17	16	26	17	32	42	42	43	52	33	25	T	20
19	51	34	43	33	43	39	51	50	40	44	52	54	54	M	55	46	56	76	88	69	45	55	75	57	53
20	100	76	37	12	11	5	8	18	27	28	27	43	28	19	22	26	34	27	46	33	30	27	21	9	30
21	12	14	8	2	4	5	8	11	16	35	30	21	18	31	21	25	27	26	29	19	21	13	10	15	18
22	12	10	6	3	3	6	9	28	56	68	73	59	63	58	43	35	31	37	45	41	42	122	98	70	42
23	52	62	76	46	34	48	58	45	64	77	74	33	21	26	23	33	30	33	36	26	9	12	8	10	39
24	56	43	26	28	31	24	21	33	53	85	83	83	93	56	37	47	40	36	43	37	35	28	27	13	44
25	9	2	10	5	6	10	10	30	33	72	84	58	46	34	38	33	29	33	34	35	36	40	28	19	31
26	18	13	24	8	2	0	9	11	39	85	M	21	M	18	21	17	27	29	22	23	18	18	19	16	21
27	10	7	9	8	8	6	8	4	22	31	37	23	12	14	12	18	25	25	29	24	18	14	15	15	16
28	16	13	4	0	0	0	1	28	20	5	36	33	16	10	14	13	8	11	11	10	7	12	16	10	12
29	9	14	11	2	2	3	3	16	34	29	27	37	25	29	39	46	44	40	46	40	27	27	15	9	24
30	6	1	7	23	32	53	26	32	21	58	75	74	71	56	62	58	43	41	77	63	9	15	20	23	39

MONTHLY STATISTICS:

GEOM	ARITH-----PERCENTILES-----								RANGE-----				STN GEOM	PERCENT	NO. OF TIMES		
MEAN	MEDIAN	MEAN	50	90	95	98	99	1-HR	24-HR	DEVIATION	VALID DATA	ABOVE OBJECTIVE					
14	12	19	12	46	61	83	93	0	-	143	0	-	53	3	99	1-HR	0

NOTES: 1. FLAGS FOR INVALID DATA :
D: DYNAMIC CALIBRATION
T: TELEMETRY/DATALOGGR FAULT
M: MAINTENANCE OR ANALYZER FAULT
P: POWER FAILURE

THE HONGKONG ELECTRIC COMPANY, LTD.
AIR QUALITY DATA MONTHLY TIME SERIES REPORT

STATION : CHUNG HOM KOK ZONE SUBSTATION
POLLUTANT : SULPHUR DIOXIDE

MONTH: JULY

YEAR : 2014

UNIT : MICROGRAMS/CUBIC METER

DAY	1	2	3	4	5	6	7	8	9	10	11	12	13	14	15	16	17	18	19	20	21	22	23	24	MEAN
1	0	0	0	0	0	0	0	0	0	0	0	0	2	2	1	0	2	2	4	10	11	6	3	1	2
2	3	7	3	6	10	6	9	1	15	17	9	5	1	2	1	1	2	1	1	2	3	2	3	3	5
3	2	0	1	0	1	2	0	3	2	2	4	2	1	1	3	2	1	1	1	1	3	5	2	5	2
4	8	2	4	3	1	2	5	2	2	4	0	9	8	11	14	11	14	16	6	8	7	10	12	5	7
5	5	6	4	5	5	2	8	6	8	6	7	4	4	7	3	3	5	7	6	9	8	7	4	5	6
6	5	4	3	4	7	8	8	14	9	3	4	10	8	6	5	9	8	5	5	16	8	15	13	38	9
7	27	29	23	27	14	7	7	3	6	14	48	21	24	16	25	26	15	14	16	33	46	35	32	54	23
8	33	25	15	12	15	23	22	17	20	25	19	30	48	75	42	23	17	10	17	13	7	29	23	34	25
9	31	46	19	20	22	17	16	34	47	29	27	28	22	20	12	14	15	18	16	10	7	6	6	9	20
10	10	6	7	10	9	5	4	6	8	8	16	8	39	16	22	11	17	8	3	4	12	12	9	14	11
11	12	15	10	10	3	1	3	1	5	8	14	7	14	13	7	10	4	6	2	8	5	3	5	7	7
12	5	3	3	1	2	2	2	5	4	3	3	4	2	5	5	3	6	7	7	10	9	6	6	1	4
13	7	6	6	5	13	15	18	9	14	17	12	13	20	17	13	9	4	5	6	8	11	9	15	8	11
14	13	8	5	4	8	16	7	2	4	12	9	19	15	12	7	6	4	3	11	16	29	17	26	7	11
15	12	17	6	10	14	14	13	19	10	9	5	7	7	6	6	10	5	4	8	4	4	5	4	6	9
16	8	12	11	10	8	9	10	10	8	7	6	6	4	2	3	3	2	2	1	2	4	4	5	3	6
17	2	3	2	2	3	3	3	3	2	2	3	3	2	1	1	1	2	1	1	0	1	1	1	0	2
18	1	1	1	1	1	0	1	0	1	1	0	0	0	2	0	0	1	1	0	0	0	1	1	1	1
19	1	1	2	3	1	2	2	2	2	2	2	1	3	2	2	2	2	2	2	3	5	3	7	3	2
20	1	5	7	6	3	5	3	3	4	3	3	4	4	4	3	3	5	4	4	6	6	9	8	8	5
21	8	13	20	11	6	4	14	90	91	144	104	51	36	32	26	19	19	18	19	34	30	41	41	27	37
22	30	49	36	27	15	26	58	29	32	85	48	28	19	43	26	10	11	15	15	15	15	7	8	11	27
23	7	23	34	25	30	36	21	19	15	10	12	16	11	9	12	11	7	6	6	5	9	6	6	7	14
24	4	2	3	5	4	9	6	5	4	3	5	7	4	3	5	6	6	6	10	5	6	5	5	7	5
25	23	22	16	23	10	5	3	7	5	7	4	8	4	4	5	22	19	3	3	6	4	5	3	3	9
26	2	2	2	1	1	1	2	2	3	2	7	3	0	1	1	1	1	1	1	3	2	3	3	1	2
27	2	2	1	1	0	1	1	3	3	2	2	4	2	2	3	2	4	2	3	2	3	4	3	2	2
28	3	2	1	3	5	3	2	3	2	2	P	P	P	P	P	P	P	P	P	P	P	P	P	P	3
29	P	P	P	2	15	25	24	7	31	66	75	35	4	3	3	2	3	3	4	8	11	7	4	6	
30	6	7	6	6	7	6	6	5	5	4	3	3	3	6	13	17	11	19	11	16	10	11	12	17	9
31	29	33	19	6	8	17	11	22	127	47	31	29	17	26	13	M	13	12	14	17	13	16	9	12	24

MONTHLY STATISTICS:

GEOM	ARITH-----PERCENTILES-----							-----RANGE-----					STN GEOM	PERCENT	NO. OF TIMES	
MEAN	MEDIAN	MEAN	50	90	95	98	99	1-HR		24-HR			DEVIATION	VALID DATA	ABOVE OBJECTIVE	
6	6	10	6	25	33	48	73	0	-	144	1	-	37	3	98	0

NOTES:

1. FLAGS FOR INVALID DATA :
 - D: DYNAMIC CALIBRATION
 - T: TELEMETRY/DATALOGGR FAULT
 - M: MAINTENANCE OR ANALYZER FAULT
 - P: POWER FAILURE

THE HONGKONG ELECTRIC COMPANY, LTD.
AIR QUALITY DATA MONTHLY TIME SERIES REPORT

STATION : CHUNG HOM KOK ZONE SUBSTATION
POLLUTANT : NITROGEN DIOXIDE

MONTH: JULY

YEAR : 2014

UNIT : MICROGRAMS/CUBIC METER

DAY	1	2	3	4	5	6	7	8	9	10	11	12	13	14	15	16	17	18	19	20	21	22	23	24	MEAN
1	1	0	0	0	0	0	0	0	0	0	0	1	1	0	1	2	1	9	7	21	12	12	2	7	3
2	2	M	0	3	4	0	1	1	3	8	7	1	0	5	0	0	0	2	1	2	4	2	3	13	3
3	6	1	4	0	3	4	3	5	3	7	7	4	5	4	7	7	6	9	10	15	16	13	11	17	7
4	12	7	6	7	5	3	10	7	7	6	3	20	19	21	21	22	24	27	21	28	23	24	25	10	15
5	8	6	4	9	9	4	12	13	11	9	13	8	9	10	11	11	14	14	16	20	19	15	12	10	11
6	11	9	5	7	7	9	11	15	11	5	9	15	22	17	17	24	22	23	13	19	16	24	23	37	15
7	26	29	27	30	19	11	16	16	19	36	62	38	41	63	81	79	69	90	81	111	112	99	104	111	57
8	86	64	24	20	31	60	61	55	55	62	75	72	71	73	29	24	33	29	26	19	18	95	79	74	51
9	61	66	37	46	41	25	28	60	63	42	31	33	21	22	20	14	20	20	19	18	14	8	11	12	31
10	10	5	6	12	9	4	4	10	17	14	29	24	37	20	21	12	18	15	6	13	18	14	13	20	15
11	15	11	9	7	5	2	7	8	6	14	15	10	11	10	7	10	7	10	9	15	14	10	8	12	10
12	10	9	6	3	2	2	4	10	9	6	4	5	2	4	5	4	7	9	11	16	13	10	9	5	7
13	10	5	5	5	20	17	20	9	9	12	11	7	10	10	11	12	9	14	13	15	19	15	22	14	12
14	15	7	7	4	10	15	7	3	6	11	10	12	9	9	7	8	7	10	19	23	30	18	23	10	12
15	11	17	5	8	14	15	17	13	10	10	9	8	8	7	6	11	10	8	14	9	9	10	12	11	11
16	13	M	15	11	8	11	13	22	17	12	11	11	8	6	9	10	9	5	1	2	5	5	13	9	10
17	7	5	7	5	5	5	7	8	7	6	5	4	3	4	4	5	3	3	4	3	4	3	3	3	5
18	3	2	3	2	2	2	3	4	4	5	7	5	4	10	6	6	9	9	7	7	5	6	6	5	5
19	4	3	5	6	4	4	9	10	12	9	6	5	10	8	9	8	9	12	13	16	19	12	17	14	9
20	6	12	11	10	5	11	7	10	11	7	7	8	7	7	7	6	12	14	15	15	14	13	13	20	10
21	18	16	24	12	8	7	13	36	37	48	49	50	39	39	40	35	28	34	33	42	38	47	38	33	32
22	31	44	25	17	16	12	37	25	30	60	57	39	25	52	37	21	33	38	49	33	27	17	25	20	32
23	14	39	48	37	42	44	28	20	18	12	10	14	7	7	15	18	14	11	8	9	15	9	8	11	19
24	6	2	4	7	6	12	10	8	8	8	11	11	10	8	11	14	15	16	29	11	11	9	10	23	11
25	39	36	22	35	17	6	8	12	11	12	11	14	10	8	9	15	17	9	9	11	12	11	11	14	15
26	11	6	5	4	2	3	4	8	10	8	12	13	2	9	10	7	4	3	3	7	5	4	7	2	6
27	4	4	1	2	0	1	4	4	8	6	4	8	7	10	11	8	14	12	12	10	11	9	11	5	7
28	5	2	2	3	6	3	3	5	6	5	P	P	P	P	P	P	P	P	P	P	P	P	P	P	4
29	P	P	P	9	14	24	21	12	29	43	44	29	9	7	9	12	14	22	23	29	22	14	8	17	
30	12	M	4	3	4	6	8	10	13	18	11	9	8	8	15	24	17	27	26	36	25	19	15	25	15
31	31	29	19	5	7	19	19	31	54	38	33	33	20	19	11	M	23	20	20	23	22	19	12	15	23

MONTHLY STATISTICS:

GEOM	ARITH-----PERCENTILES-----										RANGE-----			STN GEOM	PERCENT	NO. OF TIMES
MEAN	MEDIAN	MEAN	50	90	95	98	99	1-HR			24-HR	DEVIATION	VALID DATA	ABOVE OBJECTIVE		
11	11	16	11	35	49	73	85	0	-	112	3	-	57	2	97	0

NOTES:

1. FLAGS FOR INVALID DATA :
 - D: DYNAMIC CALIBRATION
 - T: TELEMETRY/DATALOGGR FAULT
 - M: MAINTENANCE OR ANALYZER FAULT
 - P: POWER FAILURE

THE HONGKONG ELECTRIC COMPANY, LTD.
AIR QUALITY DATA MONTHLY TIME SERIES REPORT

STATION : CHUNG HOM KOK ZONE SUBSTATION
POLLUTANT : SULPHUR DIOXIDE

MONTH: AUGUST

YEAR : 2014

UNIT : MICROGRAMS/CUBIC METER

DAY	1	2	3	4	5	6	7	8	9	10	11	12	13	14	15	16	17	18	19	20	21	22	23	24	MEAN
1	13	11	14	7	9	21	14	17	10	44	10	24	27	20	23	9	9	4	3	3	6	4	4	0	13
2	0	3	19	12	4	3	4	4	7	12	21	23	31	8	16	8	8	11	13	24	21	19	8	10	12
3	7	1	18	15	14	7	4	5	7	16	21	18	41	36	19	7	7	7	7	13	16	13	14	10	13
4	13	8	9	4	7	8	19	18	14	15	20	20	14	17	27	18	5	16	9	6	8	5	3	3	12
5	4	4	3	5	5	4	4	2	2	3	2	3	2	2	2	1	7	3	4	6	6	8	4	8	4
6	9	1	4	2	3	2	1	2	1	3	1	4	2	8	10	20	14	10	5	4	4	7	5	5	5
7	10	8	13	11	9	2	3	7	8	10	6	11	9	10	9	9	7	10	M	5	9	6	8	5	8
8	5	11	14	21	5	8	6	5	8	19	11	9	7	5	7	3	5	3	6	12	10	12	12	14	9
9	11	6	5	8	10	12	7	19	13	10	15	9	10	7	8	8	7	12	7	9	8	8	7	9	9
10	9	13	9	5	5	5	9	10	21	25	22	10	11	8	8	5	5	9	6	5	7	9	9	11	10
11	11	7	11	15	8	6	11	15	7	17	12	7	9	9	7	11	7	9	8	11	9	15	17	10	10
12	15	20	20	10	13	10	6	6	8	10	20	9	7	2	7	12	7	6	1	2	2	5	11	10	9
13	7	3	5	3	5	4	1	0	1	0	0	0	0	0	1	2	8	2	1	3	3	3	1	1	2
14	3	12	12	11	15	16	24	22	20	17	32	27	8	13	8	8	3	9	10	12	15	8	15	13	14
15	20	20	18	17	11	4	5	4	20	17	27	29	24	13	8	8	14	8	12	7	18	8	8	21	14
16	8	9	14	13	13	21	15	15	22	21	5	5	7	12	6	10	9	10	8	2	4	11	7	27	11
17	21	45	23	10	12	14	18	13	13	17	8	5	11	4	8	9	5	8	11	6	6	19	23	9	13
18	10	11	12	7	5	15	11	9	12	5	9	6	7	3	6	8	8	11	14	20	23	13	13	11	10
19	6	9	5	3	2	7	2	1	7	8	6	2	4	11	7	3	5	6	2	3	7	4	3	3	5
20	2	3	2	6	9	5	1	0	0	5	10	1	1	4	2	1	5	5	1	1	3	1	2	2	3
21	3	10	8	4	5	4	2	3	2	2	M	M	4	9	2	M	0	2	6	1	4	5	7	14	5
22	19	8	9	7	6	19	6	5	6	5	5	3	7	7	4	10	18	16	9	8	12	11	7	10	9
23	16	15	20	11	8	12	29	34	8	8	16	19	14	5	6	5	2	2	6	6	4	9	11	8	11
24	6	6	5	7	7	7	7	10	7	7	5	5	5	5	4	7	7	6	8	7	5	5	4	4	6
25	4	7	5	3	3	4	3	4	3	2	2	3	3	2	2	2	6	8	11	5	6	9	10	6	5
26	4	4	8	5	4	4	5	4	4	2	2	2	2	2	2	2	2	2	1	3	5	3	3	3	3
27	3	3	2	2	3	4	3	4	3	5	5	5	4	2	2	2	2	2	2	2	3	2	2	2	3
28	1	2	2	2	2	1	1	4	4	1	2	1	2	4	1	1	1	3	2	4	2	5	6	5	2
29	3	3	4	2	3	2	2	2	1	4	3	2	4	3	5	2	3	2	2	2	2	3	5	3	3
30	7	6	5	8	8	6	5	5	4	3	3	3	2	3	2	2	2	4	4	5	3	3	1	2	4
31	2	3	2	2	3	6	4	5	1	3	3	4	2	1	1	1	3	2	2	2	3	3	5	4	3

MONTHLY STATISTICS:

GEOM	ARITH-----PERCENTILES-----								-----RANGE-----				STN GEOM	PERCENT	NO. OF TIMES	
MEAN	MEDIAN	MEAN	50	90	95	98	99	1-HR	24-HR	DEVIATION	VALID DATA	ABOVE OBJECTIVE				
6	6	8	6	17	20	24	29	0	-	45	2	-	14	2	99	0

- NOTES: 1. FLAGS FOR INVALID DATA :
- D: DYNAMIC CALIBRATION
 - T: TELEMETRY/DATALOGGR FAULT
 - M: MAINTENANCE OR ANALYZER FAULT
 - P: POWER FAILURE

THE HONGKONG ELECTRIC COMPANY, LTD.
AIR QUALITY DATA MONTHLY TIME SERIES REPORT

STATION : CHUNG HOM KOK ZONE SUBSTATION
POLLUTANT : NITROGEN DIOXIDE

MONTH: AUGUST

YEAR : 2014

UNIT : MICROGRAMS/CUBIC METER

DAY	1	2	3	4	5	6	7	8	9	10	11	12	13	14	15	16	17	18	19	20	21	22	23	24	MEAN
1	18	11	11	12	13	24	24	21	19	25	13	30	26	37	36	24	21	21	27	20	18	32	16	8	21
2	6	26	57	45	17	16	28	31	35	26	36	37	40	18	24	20	23	35	33	32	33	28	18	18	28
3	27	11	34	37	31	24	19	23	31	39	43	26	33	35	23	20	27	27	31	36	25	19	26	20	28
4	23	14	13	5	9	8	24	21	22	31	28	26	12	13	17	14	10	18	13	11	13	8	4	0	15
5	0	0	0	0	0	4	1	6	7	3	8	5	3	2	2	0	5	9	4	11	3	1	3	8	4
6	4	1	1	10	26	12	5	16	11	11	0	23	11	13	17	20	13	11	12	6	7	7	6	1	10
7	3	4	6	6	5	0	7	8	14	20	4	9	4	2	1	8	3	M	M	6	8	1	6	3	6
8	3	5	13	19	4	1	2	6	6	10	9	9	3	3	4	0	3	4	3	10	8	5	6	10	6
9	7	12	4	4	7	10	2	11	8	5	10	7	9	9	11	9	9	11	13	12	12	11	9	9	9
10	7	12	8	1	0	6	5	6	17	17	22	5	7	4	4	6	6	13	10	3	9	7	6	11	8
11	8	3	4	8	4	3	6	11	0	9	6	4	15	4	7	9	6	9	13	12	11	12	15	8	8
12	15	18	18	6	12	7	2	4	5	5	11	6	7	0	5	8	3	9	1	2	3	6	12	10	7
13	5	M	5	1	5	6	0	8	17	20	8	2	0	5	6	9	30	14	1	10	29	26	7	10	10
14	4	8	7	6	16	14	15	11	6	4	12	8	2	4	1	4	0	2	6	11	20	3	11	6	8
15	17	19	15	10	12	0	0	0	12	14	21	21	12	6	3	2	13	9	9	3	13	3	5	24	10
16	10	7	8	9	11	19	8	7	13	10	1	0	4	10	7	13	9	17	9	1	2	6	10	22	9
17	16	25	21	9	5	7	13	7	2	5	1	0	3	2	5	9	6	13	21	10	4	17	18	2	9
18	2	2	8	1	0	8	7	3	2	0	1	0	1	0	1	2	4	11	12	20	20	13	8	11	6
19	2	4	0	2	1	3	6	0	4	5	2	0	0	4	3	3	14	9	3	4	25	11	6	19	5
20	15	21	20	27	15	5	4	10	7	24	21	5	5	11	2	3	4	14	3	14	16	7	8	1	11
21	1	7	2	0	0	0	1	1	0	0	M	M	1	1	0	M	0	2	3	1	5	3	0	13	2
22	13	2	2	2	6	10	2	5	6	2	1	0	2	4	1	5	12	12	8	9	16	12	11	5	6
23	8	6	12	4	1	2	13	14	2	1	2	4	3	1	0	1	1	3	6	4	1	4	8	7	5
24	3	3	0	1	1	0	2	3	2	2	0	0	0	1	2	2	4	6	12	7	4	7	4	6	3
25	3	3	0	0	0	0	0	0	1	0	0	0	1	0	1	1	6	9	13	7	6	6	14	5	3
26	1	0	5	0	0	0	1	1	0	1	0	0	0	1	0	0	1	3	1	0	3	0	0	0	1
27	0	M	0	0	0	0	0	1	0	0	0	0	0	0	0	0	0	0	0	0	0	0	0	0	0
28	0	0	0	0	0	0	0	3	1	0	1	0	0	2	1	1	0	2	1	2	1	3	3	2	1
29	0	0	0	0	0	0	0	0	0	0	0	0	0	0	0	0	2	1	1	1	0	0	13	1	1
30	0	0	0	1	1	0	0	0	2	2	0	0	0	0	0	0	0	2	5	7	1	0	0	0	1
31	0	0	0	0	0	2	1	0	0	0	0	1	0	0	0	1	1	1	2	0	0	0	5	1	1

MONTHLY STATISTICS:

GEOM	ARITH-----PERCENTILES-----							-----RANGE-----				STN GEOM	PERCENT	NO. OF TIMES		
MEAN	MEDIAN	MEAN	50	90	95	98	99	1-HR		24-HR		DEVIATION	VALID DATA	ABOVE OBJECTIVE		
6	5	8	5	20	26	33	37	0	-	57	0	-	28	3	99	1-HR
																0

- NOTES: 1. FLAGS FOR INVALID DATA :
- D: DYNAMIC CALIBRATION
 - T: TELEMETRY/DATALOGGR FAULT
 - M: MAINTENANCE OR ANALYZER FAULT
 - P: POWER FAILURE

THE HONGKONG ELECTRIC COMPANY, LTD.
AIR QUALITY DATA MONTHLY TIME SERIES REPORT

STATION : CHUNG HOM KOK ZONE SUBSTATION
POLLUTANT : SULPHUR DIOXIDE

MONTH: SEPTEMBER

YEAR : 2014

UNIT : MICROGRAMS/CUBIC METER

DAY	1	2	3	4	5	6	7	8	9	10	11	12	13	14	15	16	17	18	19	20	21	22	23	24	MEAN
1	2	2	1	1	2	2	2	2	3	1	4	2	3	2	4	5	9	3	6	5	4	1	4	11	3
2	12	12	8	4	5	4	4	4	12	45	7	9	21	24	20	21	7	5	5	7	12	13	17	13	12
3	19	11	13	17	20	8	8	8	9	18	26	26	21	16	9	5	5	8	15	8	15	11	10	16	13
4	10	6	16	7	12	19	25	26	21	47	63	48	48	25	19	17	13	15	6	8	8	10	11	8	20
5	6	3	2	2	2	2	2	4	1	1	2	2	2	2	1	1	2	3	6	1	2	5	4	3	3
6	4	5	5	4	4	5	4	3	3	3	3	3	5	5	4	4	7	7	8	11	9	8	6	3	5
7	3	2	3	3	2	2	2	3	2	3	4	3	3	1	1	2	0	0	0	0	1	2	3	3	2
8	3	4	2	2	2	2	1	1	1	2	7	3	4	1	13	11	8	7	3	6	5	4	2	6	4
9	7	13	6	8	5	9	5	14	13	28	17	12	11	12	9	9	11	16	6	4	5	4	6	19	10
10	16	19	25	16	6	15	29	26	13	18	33	14	8	19	17	35	13	8	8	8	8	7	6	5	16
11	6	7	8	3	6	6	9	11	5	5	3	1	2	2	3	1	1	2	6	3	4	3	2	1	4
12	1	2	1	1	1	1	2	1	2	1	1	1	1	0	1	1	0	0	0	1	1	0	0	1	1
13	1	1	1	0	2	3	3	3	4	4	1	3	2	3	2	2	7	4	5	3	3	2	6	3	3
14	3	2	1	2	1	3	2	2	2	2	1	2	1	1	1	2	4	7	5	2	4	6	5	7	3
15	6	3	4	16	15	7	8	7	4	4	2	3	3	3	3	3	3	1	1	0	1	0	1	1	4
16	1	0	0	0	0	1	1	0	0	0	0	0	0	0	0	0	1	1	0	1	0	1	1	2	0
17	1	1	1	2	1	1	2	3	2	2	D	D	4	4	3	3	3	3	3	3	3	4	5	2	3
18	2	2	3	10	7	5	3	2	3	4	6	3	3	11	44	26	21	45	21	17	15	33	24	37	14
19	18	17	13	12	18	17	31	38	33	31	33	42	38	30	21	8	10	25	28	36	43	59	38	37	28
20	27	10	8	9	8	7	3	3	4	2	2	3	12	5	15	4	3	5	4	3	5	7	7	3	7
21	2	2	2	2	3	3	4	5	6	5	4	7	18	5	3	4	8	6	7	6	6	5	5	6	5
22	4	4	5	5	4	5	5	5	6	17	27	19	25	5	5	7	19	21	24	18	18	27	32	21	14
23	23	19	34	44	8	7	6	9	24	16	11	4	3	3	4	3	3	13	9	9	12	11	12	16	13
24	22	27	42	27	29	24	19	22	26	25	31	33	43	41	22	18	13	19	24	21	24	17	20	18	25
25	17	15	30	18	14	17	19	21	30	53	45	40	40	34	29	17	15	13	15	14	9	8	6	7	22
26	9	9	11	20	19	5	5	6	6	5	5	2	2	3	4	4	8	4	3	1	2	2	3	3	6
27	2	3	4	4	3	8	10	10	8	11	6	2	7	5	3	4	9	12	7	7	6	8	11	7	7
28	6	5	6	1	2	1	2	4	2	3	2	2	2	3	4	3	6	10	8	7	6	3	2	4	4
29	5	8	9	7	9	16	11	7	9	59	34	15	17	10	9	12	11	9	8	9	11	19	25	21	15
30	12	8	21	21	21	16	16	15	16	27	42	50	27	27	31	31	32	24	25	29	14	14	13	14	23

MONTHLY STATISTICS:

GEOM	ARITH ----- PERCENTILES -----							----- RANGE -----				STN GEOM	PERCENT	NO. OF TIMES		
MEAN	MEDIAN	MEAN	50	90	95	98	99	1-HR	24-HR	DEVIATION	VALID DATA	ABOVE OBJECTIVE				
6	5	10	5	25	32	43	47	0	-	63	0	-	28	3	100	0

NOTES:

1. FLAGS FOR INVALID DATA :
 - D: DYNAMIC CALIBRATION
 - T: TELEMETRY/DATALOGGR FAULT
 - M: MAINTENANCE OR ANALYZER FAULT
 - P: POWER FAILURE

THE HONGKONG ELECTRIC COMPANY, LTD.
AIR QUALITY DATA MONTHLY TIME SERIES REPORT

STATION : CHUNG HOM KOK ZONE SUBSTATION
POLLUTANT : NITROGEN DIOXIDE

MONTH: SEPTEMBER

YEAR : 2014

UNIT : MICROGRAMS/CUBIC METER

DAY	1	2	3	4	5	6	7	8	9	10	11	12	13	14	15	16	17	18	19	20	21	22	23	24	MEAN
1	0	0	0	0	1	0	1	2	0	1	1	0	0	0	1	3	4	2	11	4	0	0	1	8	2
2	11	8	2	0	0	0	0	3	8	12	2	2	8	6	9	9	5	6	8	8	5	4	17	10	6
3	14	5	8	11	13	3	5	6	7	8	15	19	19	21	17	8	8	15	4	14	6	8	14	11	
4	8	5	16	14	23	30	37	43	44	57	72	76	80	44	41	46	46	51	5	1	1	0	0	0	31
5	0	0	0	0	0	0	0	2	0	0	0	0	0	0	0	0	1	2	0	0	0	0	0	0	0
6	0	0	0	0	0	0	0	0	1	1	0	0	0	0	0	0	4	8	4	2	3	3	2	1	1
7	0	0	0	0	0	0	0	0	0	0	0	0	0	0	0	0	0	1	0	0	0	1	3	2	0
8	1	0	0	0	0	0	1	3	2	0	3	0	2	0	10	12	9	8	4	10	3	1	4	3	3
9	6	13	4	6	7	7	2	13	1	12	3	1	3	4	6	5	5	17	15	7	5	4	8	24	7
10	12	M	18	10	0	4	17	11	5	6	11	5	1	4	3	13	7	9	8	6	5	1	3	4	7
11	7	2	3	0	1	2	6	10	2	2	M	M	0	0	1	2	4	4	5	1	3	2	0	0	3
12	0	0	0	0	0	0	0	1	0	0	0	0	0	0	0	0	0	0	0	0	0	0	0	0	0
13	0	0	0	0	0	1	0	1	0	1	0	0	0	0	0	0	3	4	6	1	0	1	3	1	1
14	0	0	0	0	0	0	0	0	0	0	0	0	0	0	0	2	5	12	3	0	0	0	0	0	1
15	0	0	0	21	14	6	5	4	1	1	1	1	1	0	0	0	0	0	0	0	0	0	0	0	2
16	0	0	0	0	0	0	0	0	0	0	0	0	0	0	0	0	0	1	0	0	0	0	0	0	0
17	0	0	0	0	0	0	0	3	0	1	D	D	2	0	0	1	1	3	0	3	4	2	3	1	1
18	0	0	0	6	2	2	1	4	3	1	3	0	0	4	24	15	19	29	20	12	16	24	22	37	10
19	23	24	19	20	33	40	40	46	45	44	50	67	68	55	43	20	28	47	45	71	29	32	23	55	40
20	72	16	7	0	0	0	0	1	5	7	14	24	29	12	25	12	15	28	23	15	8	7	6	17	14
21	15	10	8	7	5	5	9	13	16	8	5	23	36	15	10	17	23	12	6	10	8	6	6	19	12
22	18	13	11	8	9	9	15	21	23	36	46	31	32	18	18	14	35	40	22	23	16	23	21	48	23
23	53	59	58	72	18	10	12	31	44	31	20	10	6	6	10	7	7	24	21	14	17	12	10	11	23
24	9	M	29	29	40	38	40	43	45	48	50	M	50	48	26	27	25	35	25	15	16	16	14	7	31
25	7	4	13	8	2	5	8	23	35	65	50	35	26	18	20	17	17	20	25	16	6	5	6	0	18
26	1	0	0	5	7	0	0	11	4	2	0	0	0	0	0	1	4	4	6	1	2	0	0	0	2
27	0	0	0	0	0	0	0	3	0	0	0	0	0	0	0	0	1	10	10	1	0	0	2	0	1
28	0	0	0	0	0	0	0	0	0	0	0	0	0	0	0	0	2	13	17	13	3	1	0	0	2
29	0	0	0	0	0	3	0	2	2	27	21	5	5	2	3	10	10	17	9	7	4	10	15	14	7
30	5	8	20	19	18	30	32	30	30	37	48	57	35	26	23	30	30	31	25	23	17	14	6	10	25

MONTHLY STATISTICS:

GEOM	ARITH-----PERCENTILES-----										RANGE-----		STN GEOM	PERCENT	NO. OF TIMES	
MEAN	MEDIAN	MEAN	50	90	95	98	99	1-HR		24-HR		DEVIATION	VALID DATA	ABOVE OBJECTIVE		
8	3	10	3	29	44	55	67	0	-	80	0	-	40	3	99	1-HR
																0

- NOTES: 1. FLAGS FOR INVALID DATA :
- D: DYNAMIC CALIBRATION
 - T: TELEMETRY/DATALOGGR FAULT
 - M: MAINTENANCE OR ANALYZER FAULT
 - P: POWER FAILURE

THE HONGKONG ELECTRIC COMPANY, LTD.
AIR QUALITY DATA MONTHLY TIME SERIES REPORT
MONTH: JULY

STATION : VICTORIA ROAD SUBSTATION
POLLUTANT : SULPHUR DIOXIDE

YEAR : 2014
UNIT : MICROGRAMS/CUBIC METER

DAY	1	2	3	4	5	6	7	8	9	10	11	12	13	14	15	16	17	18	19	20	21	22	23	24	MEAN
1	0	0	0	0	0	0	0	0	0	1	1	2	1	2	0	1	1	0	0	1	0	1	1	1	1
2	1	2	2	1	1	0	1	2	2	3	3	1	2	1	2	2	1	1	2	1	1	2	2	2	2
3	2	1	1	0	0	0	1	1	1	1	1	0	4	2	1	3	1	1	1	3	1	2	2	2	1
4	2	1	1	1	1	0	1	1	0	2	2	1	2	3	3	3	2	3	1	1	2	3	4	2	2
5	2	2	2	5	2	1	1	2	3	2	2	1	1	2	2	2	2	1	1	1	2	2	1	1	2
6	1	1	1	2	2	3	4	2	2	1	1	1	4	3	3	2	2	1	1	2	1	1	2	4	2
7	4	2	1	3	2	1	1	1	2	3	4	4	2	1	1	5	3	3	2	9	8	6	6	4	3
8	3	2	2	2	2	2	2	2	4	8	11	19	12	13	12	7	4	3	2	2	2	4	3	2	5
9	3	4	2	1	1	1	1	4	7	3	7	5	2	1	3	3	4	2	4	3	1	1	1	1	3
10	2	2	2	1	1	0	0	0	1	4	0	1	7	5	2	2	2	1	2	2	4	5	3	2	2
11	1	2	3	4	3	1	1	1	2	5	2	3	2	1	1	1	5	3	1	1	1	3	2	2	2
12	1	1	0	0	0	0	3	2	3	3	2	2	1	2	1	3	3	1	1	0	1	2	1	2	1
13	2	1	2	2	2	1	1	1	2	3	1	1	3	2	3	1	1	1	2	2	1	1	3	2	2
14	1	1	1	1	1	1	0	0	1	4	2	2	3	1	1	0	1	0	3	2	3	1	2	2	1
15	1	2	2	2	3	2	2	2	3	1	2	2	3	3	4	4	2	1	2	2	2	3	4	7	3
16	4	6	3	2	1	2	3	3	2	2	4	3	1	1	7	2	1	1	1	0	0	0	1	0	2
17	0	0	0	0	0	0	0	0	0	0	0	0	0	0	0	0	0	0	0	0	0	0	0	0	0
18	0	0	0	0	0	0	0	0	0	0	0	0	0	0	0	0	0	0	0	0	0	0	0	0	0
19	0	0	0	0	0	0	0	0	0	0	1	0	0	0	0	0	0	0	0	0	0	0	0	0	0
20	0	0	0	0	0	0	0	0	0	0	0	0	0	0	0	0	0	0	0	0	0	P	P	P	0
21	P	P	P	P	P	P	P	P	P	P	P	P	P	P	P	P	P	2	3	6	4	5	4	7	
22	5	5	4	5	5	4	5	2	5	12	12	8	5	11	4	5	1	1	2	1	1	1	1	1	4
23	1	2	3	4	3	5	3	4	3	3	2	3	2	1	2	2	1	1	1	1	1	1	1	1	2
24	0	0	0	0	0	1	1	0	0	1	M	M	0	0	0	0	0	0	0	0	0	0	0	1	0
25	1	1	0	1	1	0	0	1	1	0	1	1	1	2	1	4	4	3	1	1	0	1	0	0	1
26	0	0	0	0	0	0	0	0	1	1	0	0	0	0	2	4	0	0	0	0	0	0	0	0	0
27	0	0	0	0	0	0	0	0	0	0	0	0	0	0	0	0	0	0	0	0	0	0	0	0	0
28	0	0	0	0	0	0	0	0	0	0	0	1	3	5	7	6	10	8	8	10	5	4	5	2	3
29	3	2	2	2	2	1	1	2	11	14	16	11	7	4	1	0	0	0	0	1	2	1	1	1	4
30	1	1	1	0	0	0	1	4	5	12	11	9	7	8	5	4	2	2	2	3	2	4	2	3	4
31	2	2	1	0	0	1	1	1	2	6	8	4	4	5	1	2	3	2	1	0	1	1	1	1	2

MONTHLY STATISTICS:

GEOM	ARITH-----PERCENTILES-----										RANGE-----		STN GEOM	PERCENT	NO. OF TIMES	
MEAN	MEDIAN	MEAN	50	90	95	98	99	1-HR		24-HR		DEVIATION	VALID DATA	ABOVE OBJECTIVE		
2	1	2	1	4	6	10	12	0	-	19	0	-	5	2	97	0

- NOTES: 1. FLAGS FOR INVALID DATA :
- D: DYNAMIC CALIBRATION
 - T: TELEMETRY/DATALOGGR FAULT
 - M: MAINTENANCE OR ANALYZER FAULT
 - P: POWER FAILURE

THE HONGKONG ELECTRIC COMPANY, LTD.
AIR QUALITY DATA MONTHLY TIME SERIES REPORT
MONTH: JULY

STATION : VICTORIA ROAD SUBSTATION
POLLUTANT : NITROGEN DIOXIDE

YEAR : 2014
UNIT : MICROGRAMS/CUBIC METER

DAY	1	2	3	4	5	6	7	8	9	10	11	12	13	14	15	16	17	18	19	20	21	22	23	24	MEAN
1	3	1	1	0	0	1	2	6	9	8	8	9	6	4	2	6	6	5	9	10	11	13	8	10	6
2	8	M	10	4	4	4	10	13	11	11	11	8	9	5	5	7	7	8	9	10	9	11	13	12	9
3	11	7	5	2	3	3	8	9	8	9	6	4	3	8	6	4	9	6	7	8	12	7	13	13	7
4	12	6	7	8	5	5	11	12	5	7	5	4	7	8	10	8	9	12	9	10	15	16	19	12	9
5	8	10	7	12	7	5	9	8	6	9	8	4	4	4	5	5	6	7	6	8	14	12	11	8	8
6	10	7	3	5	5	9	12	7	6	7	7	8	12	11	11	8	8	5	7	14	11	20	19	21	10
7	16	10	9	9	7	4	9	17	21	24	23	25	22	24	31	37	29	30	35	46	42	38	34	24	24
8	17	10	6	5	7	11	16	18	23	33	37	52	45	37	26	19	17	17	18	23	36	30	33	23	23
9	32	27	11	8	8	7	14	23	30	15	25	16	8	6	7	10	10	5	14	17	12	12	6	8	14
10	7	7	5	4	3	5	4	11	11	17	10	11	18	17	8	6	4	6	5	13	13	11	8	7	9
11	2	2	9	11	9	2	7	13	14	17	11	7	5	4	2	4	10	6	7	12	12	14	11	15	9
12	10	8	7	5	4	5	14	11	14	11	M	4	1	2	0	3	6	3	3	5	9	9	6	3	6
13	1	0	0	0	0	0	0	0	0	0	0	0	1	0	0	0	0	0	0	0	0	0	1	2	0
14	0	0	0	0	0	0	0	0	0	1	2	0	0	0	0	0	0	0	0	0	4	2	1	2	1
15	0	0	0	0	0	0	0	0	0	0	0	0	0	0	0	0	0	0	0	1	1	2	2	8	1
16	3	M	0	0	0	0	0	0	0	0	0	1	0	0	6	0	0	0	0	0	0	0	0	0	0
17	0	0	0	0	0	0	0	0	0	0	0	0	0	0	0	0	0	0	0	0	0	0	0	0	0
18	0	0	0	0	0	0	0	0	0	0	0	0	0	0	0	0	0	0	0	0	0	0	0	0	0
19	0	0	0	0	0	0	0	0	0	0	0	0	0	0	0	0	0	0	0	0	0	0	0	0	0
20	0	0	0	0	0	0	0	0	0	0	0	0	0	0	0	0	0	0	0	0	0	P	P	P	0
21	P	P	P	P	P	P	P	P	P	P	P	P	P	P	P	P	P	16	19	25	25	24	26	30	15
22	26	18	12	9	7	11	10	10	12	17	18	13	13	27	15	15	17	26	16	12	9	13	10	13	15
23	8	6	6	8	9	12	11	13	12	11	10	8	10	6	5	8	8	9	12	9	8	3	3	9	9
24	2	1	1	1	0	2	5	3	4	6	M	M	3	0	0	1	0	5	1	2	0	0	0	0	2
25	1	0	0	0	0	0	0	0	0	0	0	0	0	0	0	0	0	0	0	0	0	0	0	0	0
26	0	0	0	0	0	0	0	0	0	0	0	0	0	0	0	0	0	0	0	0	0	0	0	0	0
27	0	0	0	0	0	0	0	0	0	0	0	0	0	0	0	0	0	0	0	0	0	0	0	0	0
28	0	0	0	0	0	0	0	0	0	0	0	0	0	0	1	0	2	2	1	3	2	2	0	1	1
29	0	0	0	0	0	0	0	0	0	0	0	1	0	0	0	0	0	2	1	0	0	0	0	0	0
30	0	M	0	0	0	0	0	4	5	6	3	2	1	4	0	0	0	0	0	1	1	2	0	0	1
31	0	0	0	0	0	0	0	0	0	0	0	0	0	0	0	0	0	0	0	0	0	0	0	1	0

MONTHLY STATISTICS:

GEOM	ARITH-----PERCENTILES-----											RANGE-----		STN GEOM	PERCENT	NO. OF TIMES
MEAN	MEDIAN	MEAN	50	90	95	98	99	1-HR		24-HR		DEVIATION	VALID DATA	ABOVE OBJECTIVE		
7	2	6	2	15	23	31	37	0	-	52	0	-	24	2	97	1-HR
																0

- NOTES: 1. FLAGS FOR INVALID DATA :
- D: DYNAMIC CALIBRATION
 - T: TELEMETRY/DATALOGGR FAULT
 - M: MAINTENANCE OR ANALYZER FAULT
 - P: POWER FAILURE

THE HONGKONG ELECTRIC COMPANY, LTD.
AIR QUALITY DATA MONTHLY TIME SERIES REPORT
MONTH: AUGUST

STATION : VICTORIA ROAD SUBSTATION
POLLUTANT : SULPHUR DIOXIDE

YEAR : 2014
UNIT : MICROGRAMS/CUBIC METER

DAY	1	2	3	4	5	6	7	8	9	10	11	12	13	14	15	16	17	18	19	20	21	22	23	24	MEAN
1	1	1	1	3	2	2	1	2	3	9	3	5	7	4	4	3	2	2	1	0	0	0	0	0	2
2	0	0	3	2	1	1	2	1	1	2	1	1	2	1	2	4	8	3	2	2	1	1	2	3	2
3	1	0	0	0	0	0	1	0	0	5	2	2	4	1	2	1	3	1	1	2	2	0	2	2	1
4	1	1	1	1	1	1	1	2	2	1	3	2	3	3	2	2	5	4	6	4	2	1	1	1	2
5	1	1	1	1	0	0	2	7	27	20	3	5	11	1	0	2	2	2	1	1	0	1	1	1	4
6	2	0	0	0	0	0	1	1	6	2	1	1	1	1	1	8	3	2	2	1	1	0	1	0	1
7	1	1	2	1	0	1	1	1	1	3	3	4	2	1	2	1	1	2	1	0	1	0	0	1	1
8	1	1	2	2	0	0	1	2	5	7	5	3	1	1	2	1	1	1	1	2	1	3	2	2	2
9	1	0	1	0	0	0	0	1	2	1	3	3	1	2	2	2	1	2	1	2	2	1	1	2	1
10	2	2	1	1	1	1	0	0	2	2	2	2	1	2	1	2	1	3	1	0	1	1	3	2	1
11	1	1	1	1	2	1	1	1	0	3	2	2	3	1	3	3	1	2	1	1	0	1	1	1	1
12	0	0	1	2	0	1	1	1	1	1	2	1	1	0	1	2	0	0	0	0	0	0	1	0	1
13	0	0	0	0	0	0	0	0	0	0	1	0	0	0	0	0	0	1	0	1	0	0	0	0	0
14	0	0	1	0	0	0	1	1	1	0	1	1	1	1	0	1	0	0	0	0	0	0	0	0	0
15	0	1	1	1	0	0	0	0	1	3	0	0	2	2	2	3	2	0	0	0	1	0	1	0	1
16	0	0	0	0	0	1	0	0	2	4	1	1	1	1	1	1	2	2	1	0	1	0	0	1	1
17	1	1	1	0	1	2	3	2	1	2	2	1	2	1	2	2	2	2	2	2	1	3	1	1	2
18	1	2	2	1	0	2	3	3	5	4	3	3	3	0	2	1	3	1	2	2	2	2	1	1	2
19	0	1	1	0	0	1	0	0	1	0	1	1	3	2	1	0	0	2	0	0	0	0	0	0	1
20	0	2	1	1	1	1	0	0	0	1	1	0	0	2	1	1	1	2	1	1	1	1	1	1	1
21	1	5	2	2	4	2	3	1	1	1	1	1	1	1	2	1	2	2	1	1	1	1	1	2	2
22	2	1	1	1	1	2	1	2	4	4	5	3	2	4	6	7	4	2	1	1	2	3	2	3	3
23	2	3	3	2	1	1	1	5	8	4	4	5	5	3	4	1	1	2	2	1	2	2	2	2	3
24	5	4	2	1	2	2	2	2	5	19	8	6	6	5	2	4	6	3	1	1	1	1	1	1	4
25	0	1	0	0	0	0	0	1	13	10	1	2	4	3	0	0	0	0	0	1	0	0	0	1	2
26	0	0	0	0	0	1	0	0	0	0	0	0	0	0	0	0	0	0	0	0	0	0	0	0	0
27	0	0	0	0	0	1	0	1	1	1	1	1	1	0	0	0	0	0	0	0	0	0	0	0	0
28	0	0	0	0	0	0	0	0	0	0	0	0	0	0	0	0	0	0	0	0	0	0	0	0	0
29	0	0	0	1	1	0	0	0	0	0	0	0	0	0	0	1	1	0	0	0	0	0	1	3	0
30	1	2	3	2	1	1	0	0	1	2	0	0	0	0	0	0	0	0	0	0	0	0	0	0	1
31	0	0	0	0	0	0	0	0	0	0	0	0	0	0	0	0	0	0	0	0	0	0	0	0	0

MONTHLY STATISTICS:

GEOM	ARITH-----PERCENTILES-----							-----RANGE-----				STN GEOM	PERCENT	NO. OF TIMES		
MEAN	MEDIAN	MEAN	50	90	95	98	99	1-HR		24-HR		DEVIATION	VALID DATA	ABOVE OBJECTIVE		
2	1	1	1	3	4	6	8	0	-	27	0	-	4	2	100	0

- NOTES: 1. FLAGS FOR INVALID DATA :
- D: DYNAMIC CALIBRATION
 - T: TELEMETRY/DATALOGGR FAULT
 - M: MAINTENANCE OR ANALYZER FAULT
 - P: POWER FAILURE

THE HONGKONG ELECTRIC COMPANY, LTD.
AIR QUALITY DATA MONTHLY TIME SERIES REPORT

STATION : VICTORIA ROAD SUBSTATION
POLLUTANT : NITROGEN DIOXIDE

MONTH: AUGUST

YEAR : 2014
UNIT : MICROGRAMS/CUBIC METER

DAY	1	2	3	4	5	6	7	8	9	10	11	12	13	14	15	16	17	18	19	20	21	22	23	24	MEAN
1	0	0	0	0	0	0	0	0	0	0	0	0	1	1	0	0	0	0	6	13	15	0	7	7	2
2	7	8	10	0	0	0	1	0	0	0	0	0	0	0	0	0	5	0	0	0	0	0	0	4	1
3	0	0	0	0	0	0	0	0	0	2	0	0	0	0	0	0	1	0	0	1	0	0	0	2	0
4	0	0	0	0	0	0	0	0	0	0	M	1	1	0	0	0	0	0	1	1	0	0	0	1	0
5	0	0	0	0	0	0	0	0	6	6	0	0	6	0	2	5	0	4	1	0	0	0	0	2	1
6	1	0	0	0	0	0	0	1	5	1	1	0	0	0	0	M	M	14	14	14	12	9	10	7	4
7	3	3	4	1	1	1	1	5	11	12	8	6	3	2	5	3	1	5	5	4	3	1	2	6	4
8	1	0	3	2	0	0	0	1	5	6	4	3	0	0	1	2	1	2	5	7	4	12	8	7	3
9	3	2	1	0	0	0	0	1	2	1	3	4	1	2	5	5	12	5	5	7	4	5	4	9	3
10	5	4	1	0	1	1	0	0	5	4	4	1	0	1	0	1	1	4	3	1	2	1	7	6	2
11	2	1	0	0	1	0	1	1	0	2	0	1	2	0	2	5	1	5	3	2	3	3	3	8	2
12	2	2	2	4	1	2	4	3	5	4	4	1	2	5	5	9	6	6	5	4	9	8	11	5	5
13	4	M	0	0	0	0	0	4	4	4	12	13	6	8	10	7	3	8	8	10	4	8	11	11	6
14	6	3	3	1	4	2	6	6	3	3	3	1	1	2	0	1	1	3	5	6	5	4	1	7	3
15	4	5	5	2	0	0	8	8	2	5	0	0	2	1	3	M	M	4	1	6	6	4	4	4	3
16	2	0	0	0	0	1	2	2	5	5	3	3	3	2	3	7	4	6	7	5	5	2	2	4	3
17	1	4	3	0	0	1	2	1	0	0	0	0	2	1	2	2	2	3	4	3	3	5	1	3	2
18	2	4	2	0	0	2	3	4	3	2	2	M	M	0	0	0	1	0	3	4	5	2	0	4	2
19	2	1	0	0	0	1	1	3	5	6	2	1	2	4	1	2	1	9	5	3	3	2	5	3	3
20	2	7	8	3	2	0	2	3	1	9	8	2	5	8	7	3	5	8	9	9	9	9	11	5	6
21	3	7	3	2	4	2	4	5	5	4	1	0	0	0	0	0	0	2	3	3	5	3	4	5	3
22	3	0	0	0	0	1	1	3	2	1	1	0	0	1	2	2	0	0	1	1	2	6	2	5	1
23	2	3	4	1	0	0	2	2	3	1	0	0	1	0	0	0	0	1	2	2	2	3	6	7	2
24	7	5	0	0	0	1	1	1	2	6	2	2	5	2	0	2	4	3	5	5	1	2	1	1	2
25	0	0	0	0	0	0	0	1	4	2	0	0	3	2	0	0	1	3	3	3	0	0	0	2	1
26	0	0	0	0	0	0	0	0	0	0	0	0	0	1	0	1	0	0	0	0	0	0	0	0	0
27	0	M	0	0	0	0	0	0	0	0	0	0	0	0	0	0	0	0	0	0	0	0	0	0	0
28	0	0	0	0	0	0	0	0	0	0	0	0	0	0	0	0	0	0	0	0	0	0	0	0	0
29	0	0	0	0	0	0	0	0	0	0	0	0	0	0	0	1	1	2	5	3	2	4	7	8	1
30	4	4	3	2	0	0	0	2	3	7	0	0	0	0	0	0	0	0	0	0	0	0	0	0	1
31	0	0	0	0	0	0	0	0	0	0	0	0	0	0	0	0	0	0	0	0	0	0	0	0	0

MONTHLY STATISTICS:

GEOM	ARITH-----PERCENTILES-----							-----RANGE-----				STN GEOM	PERCENT	NO. OF TIMES		
MEAN	MEDIAN	MEAN	50	90	95	98	99	1-HR		24-HR		DEVIATION	VALID DATA	ABOVE OBJECTIVE		
														1-HR		
3	1	2	1	6	8	11	12	0	-	15	0	-	6	2	99	0

NOTES:

1. FLAGS FOR INVALID DATA :
 - D: DYNAMIC CALIBRATION
 - T: TELEMETRY/DATALOGGR FAULT
 - M: MAINTENANCE OR ANALYZER FAULT
 - P: POWER FAILURE

THE HONGKONG ELECTRIC COMPANY, LTD.
AIR QUALITY DATA MONTHLY TIME SERIES REPORT
MONTH: SEPTEMBER

STATION : VICTORIA ROAD SUBSTATION
POLLUTANT : SULPHUR DIOXIDE

YEAR : 2014
UNIT : MICROGRAMS/CUBIC METER

DAY	1	2	3	4	5	6	7	8	9	10	11	12	13	14	15	16	17	18	19	20	21	22	23	24	MEAN
1	0	0	0	0	0	0	0	0	0	0	0	0	0	0	2	1	2	2	0	0	0	0	0	0	0
2	1	0	0	0	0	0	0	5	20	18	14	8	4	4	6	5	6	3	4	2	1	2	1	2	4
3	1	1	1	1	2	2	2	2	2	2	5	8	5	5	2	2	2	3	1	1	1	1	1	1	2
4	0	1	1	1	2	3	6	7	8	10	10	10	6	2	1	1	1	2	3	6	3	2	1	1	4
5	1	0	0	0	0	0	0	0	0	0	0	M	0	0	0	1	M	1	1	1	1	1	1	1	0
6	0	0	0	0	0	0	0	0	2	0	0	0	1	1	1	1	1	1	1	1	1	1	1	1	1
7	0	0	0	0	0	0	0	0	0	0	0	0	0	0	0	0	0	0	0	0	0	0	0	0	0
8	0	0	0	0	0	0	0	0	0	0	3	2	0	1	3	5	5	3	1	2	2	1	1	3	1
9	3	4	3	3	1	4	3	3	2	5	3	1	3	3	1	2	3	3	2	1	1	7	10	4	3
10	3	3	6	4	3	3	5	3	5	10	10	6	8	6	6	5	5	5	4	3	3	3	3	3	5
11	2	1	1	1	1	1	1	1	3	4	3	2	0	0	0	0	0	0	0	0	0	0	0	0	1
12	0	0	0	0	0	0	0	0	0	0	0	0	0	0	0	0	0	0	0	0	0	0	0	0	0
13	0	0	0	0	0	0	1	0	1	1	0	2	1	2	0	0	0	1	0	0	0	0	0	0	0
14	0	0	0	0	0	1	2	3	7	1	0	0	0	0	0	2	0	1	1	1	0	0	0	1	1
15	1	1	2	2	4	5	4	2	1	1	1	1	0	0	0	0	0	0	0	0	0	0	0	0	1
16	0	0	0	0	0	0	0	0	0	0	0	0	0	0	0	0	0	0	0	0	0	0	0	0	0
17	0	0	0	0	0	0	0	0	0	0	0	0	0	0	0	0	0	0	0	0	0	0	0	0	0
18	0	0	0	1	1	0	0	0	3	5	10	9	5	7	9	4	5	8	4	2	4	2	3	3	4
19	2	5	5	6	6	4	6	8	9	10	8	6	8	8	10	3	2	4	4	5	6	6	6	7	6
20	8	4	2	1	1	1	1	1	1	1	1	1	2	1	0	1	1	1	1	1	1	1	2	1	2
21	1	0	0	1	2	2	2	2	1	1	1	1	1	1	1	1	0	1	1	2	2	1	2	1	1
22	1	1	0	0	1	1	1	1	1	1	3	7	6	9	6	5	4	4	3	3	6	3	3	4	3
23	6	6	4	2	3	3	3	4	5	7	8	4	7	7	4	4	6	12	11	2	2	2	2	4	5
24	3	3	4	4	4	4	4	5	7	9	11	15	22	12	6	7	3	3	3	3	4	5	4	3	6
25	2	1	2	2	3	3	3	3	3	6	8	11	11	9	8	4	3	4	4	2	3	4	2	2	4
26	2	4	7	3	2	1	1	3	3	8	16	12	10	9	9	4	9	2	1	1	0	1	1	1	5
27	1	1	1	1	2	2	2	4	12	17	26	11	8	7	5	6	5	4	1	1	1	1	2	3	5
28	2	3	3	2	1	0	0	2	9	21	15	6	6	3	12	9	7	3	2	2	2	1	1	1	5
29	3	3	1	2	2	4	2	3	8	6	11	5	4	5	2	4	3	2	3	3	2	3	2	2	4
30	1	3	3	3	3	5	2	2	4	8	11	12	11	9	13	14	14	6	5	6	2	2	3	3	6

MONTHLY STATISTICS:

GEOM	ARITH ----- PERCENTILES -----							----- RANGE -----				STN GEOM	PERCENT	NO. OF TIMES		
MEAN	MEDIAN	MEAN	50	90	95	98	99	1-HR	24-HR	24-HR	DEVIATION	VALID DATA	ABOVE OBJECTIVE			
3	1	3	1	7	10	12	15	0	-	26	0	-	6	2	100	0

- NOTES: 1. FLAGS FOR INVALID DATA :
- D: DYNAMIC CALIBRATION
 - T: TELEMETRY/DATALOGGR FAULT
 - M: MAINTENANCE OR ANALYZER FAULT
 - P: POWER FAILURE

THE HONGKONG ELECTRIC COMPANY, LTD.
AIR QUALITY DATA MONTHLY TIME SERIES REPORT
MONTH: SEPTEMBER

STATION : VICTORIA ROAD SUBSTATION
POLLUTANT : NITROGEN DIOXIDE

YEAR : 2014
UNIT : MICROGRAMS/CUBIC METER

DAY	1	2	3	4	5	6	7	8	9	10	11	12	13	14	15	16	17	18	19	20	21	22	23	24	MEAN
1	0	0	0	0	0	0	0	0	0	0	0	0	0	0	0	0	0	0	1	0	0	0	0	0	0
2	0	0	0	0	0	0	1	2	3	2	2	1	0	0	0	0	3	0	1	0	0	2	0	1	1
3	0	0	0	0	0	0	0	0	0	1	3	3	7	2	2	1	5	7	2	1	0	0	0	1	1
4	0	0	1	0	0	1	7	11	13	16	21	31	31	28	22	20	28	51	60	47	29	11	6	1	18
5	0	0	0	0	0	0	1	0	2	0	0	M	0	0	0	5	M	4	3	9	10	10	12	4	3
6	0	0	0	0	0	0	0	3	6	2	3	2	1	0	0	0	1	1	4	10	2	0	0	0	1
7	0	0	0	0	0	0	0	0	0	0	0	0	0	0	0	0	0	0	0	0	0	0	0	0	0
8	0	0	0	0	0	0	0	0	0	0	1	0	0	4	4	11	8	5	6	10	7	0	0	0	3
9	6	6	1	0	0	4	5	4	0	0	0	0	0	1	0	0	0	1	0	0	0	4	5	3	2
10	0	M	2	0	0	0	4	3	0	0	2	0	2	0	0	0	0	1	2	1	1	0	0	2	1
11	0	0	0	0	0	0	0	0	2	2	2	2	0	0	0	1	0	5	2	0	0	0	0	0	1
12	0	0	0	0	0	0	0	0	0	0	0	0	0	0	0	0	0	0	0	2	1	0	0	0	0
13	0	0	0	0	0	0	0	0	0	0	0	0	0	0	0	0	0	0	0	0	0	0	0	0	0
14	0	0	0	0	0	0	0	0	0	0	0	0	0	0	0	0	0	3	11	10	0	0	4	5	1
15	1	2	2	3	9	12	8	6	3	3	2	1	1	3	3	4	5	0	0	0	0	0	0	0	3
16	0	0	0	0	0	0	0	0	0	0	0	0	0	0	0	0	0	0	0	0	0	0	0	0	0
17	0	0	0	0	0	0	0	0	0	0	0	0	0	0	0	0	0	2	2	1	0	0	0	0	0
18	0	0	0	0	0	0	1	2	1	1	5	2	0	3	4	1	5	7	5	4	10	3	2	5	3
19	0	5	5	7	11	8	10	11	14	17	21	22	24	25	36	26	24	33	30	21	32	36	24	27	20
20	32	16	10	2	0	0	0	2	2	4	4	7	9	5	5	5	5	9	12	11	6	2	2	5	6
21	1	0	0	0	1	0	1	1	2	6	4	4	7	6	7	6	5	7	6	7	5	4	5	6	4
22	1	0	0	0	0	0	4	9	14	16	19	22	20	19	10	9	6	6	7	24	24	9	10	19	10
23	21	15	20	16	16	14	15	18	18	23	20	10	14	11	5	8	9	26	25	11	9	7	7	13	15
24	3	M	4	8	11	16	17	17	19	25	27	32	40	26	13	13	7	7	10	14	19	19	15	17	16
25	8	3	2	1	1	6	6	17	14	26	23	23	19	16	12	7	9	9	9	8	15	13	10	12	11
26	9	4	11	1	0	0	1	15	15	24	22	11	9	8	10	3	9	8	11	3	2	2	1	1	8
27	1	0	0	0	0	0	3	3	4	7	11	9	8	5	2	5	9	11	9	6	4	3	4	4	5
28	2	2	1	0	0	0	0	2	7	14	11	3	2	0	9	10	8	8	11	7	6	4	2	5	5
29	7	3	0	0	0	4	2	4	10	9	11	8	6	6	6	5	5	5	11	22	24	17	12	11	8
30	2	4	4	6	12	13	7	9	12	17	21	28	26	21	21	21	22	18	35	28	29	42	32	22	19

MONTHLY STATISTICS:

GEOM	ARITH ----- PERCENTILES -----							----- RANGE -----				STN GEOM	PERCENT	NO. OF TIMES			
MEAN	MEDIAN	MEAN	50	90	95	98	99	1-HR		24-HR		DEVIATION	VALID DATA	ABOVE OBJECTIVE			
6	2	5	2	17	24	31	35	0	-	60	0	-	20	3	99	1-HR	0

NOTES: 1. FLAGS FOR INVALID DATA :
D: DYNAMIC CALIBRATION
T: TELEMETRY/DATALOGGR FAULT
M: MAINTENANCE OR ANALYZER FAULT
P: POWER FAILURE

THE HONGKONG ELECTRIC COMPANY, LTD.
AIR QUALITY DATA MONTHLY TIME SERIES REPORT
MONTH: JULY

STATION : AP LEI CHAU
POLLUTANT : SULPHUR DIOXIDE

YEAR : 2014
UNIT : MICROGRAMS/CUBIC METER

DAY	1	2	3	4	5	6	7	8	9	10	11	12	13	14	15	16	17	18	19	20	21	22	23	24	MEAN	
1	0	0	0	0	0	0	1	0	3	5	4	9	3	1	0	3	2	1	4	20	20	32	0	8	5	
2	4	21	6	2	1	0	6	8	15	21	10	4	3	4	4	M	M	25	25	23	20	21	24	24	12	
3	21	18	24	11	11	18	18	21	15	14	14	14	16	17	22	17	18	13	15	20	29	20	19	49	19	
4	30	22	24	23	15	15	21	16	11	20	12	13	17	18	19	13	11	19	16	28	26	31	40	36	21	
5	17	20	17	28	16	16	18	27	17	18	16	12	17	13	15	13	7	11	8	16	32	35	24	24	18	
6	27	19	15	20	21	50	41	30	21	14	11	15	22	17	14	9	14	11	14	39	20	35	35	36	23	
7	46	44	25	29	18	13	12	14	20	40	39	35	21	15	24	49	22	22	30	43	37	43	37	45	30	
8	41	46	30	30	79	29	24	23	34	37	52	56	106	78	53	46	28	29	36	25	34	40	31	37	43	
9	55	51	24	21	23	25	41	72	58	85	77	M	19	8	6	11	15	11	31	15	11	11	16	16	31	
10	16	20	13	14	7	6	5	4	10	21	10	2	28	24	10	7	6	12	9	27	26	27	17	22	14	
11	8	31	33	23	9	19	8	5	14	21	10	19	5	9	6	19	12	8	6	21	18	26	23	16	15	
12	7	6	4	2	3	5	28	15	21	16	6	11	5	14	7	13	14	10	9	10	13	25	17	25	12	
13	6	11	16	15	13	11	15	17	15	18	23	13	11	16	13	9	14	9	24	11	7	14	25	14	14	
14	18	14	9	14	9	12	11	3	8	23	18	12	12	15	5	2	4	3	21	23	27	12	13	18	13	
15	10	19	12	20	18	17	14	12	15	8	12	7	14	11	10	2	13	4	14	24	20	24	11	40	15	
16	29	41	10	11	10	16	11	6	3	6	5	2	0	0	0	0	0	0	0	6	5	4	5	8	7	
17	1	1	1	1	1	1	1	2	1	0	0	0	0	0	0	0	0	0	0	0	0	0	0	0	6	1
18	0	0	1	0	0	0	0	0	0	0	0	0	0	0	0	1	0	0	0	0	0	0	0	6	0	
19	0	2	1	2	0	0	0	0	2	1	4	3	0	1	0	0	0	0	1	3	0	4	4	10	2	
20	2	6	3	2	1	4	3	0	0	0	1	1	0	0	1	0	0	2	1	4	4	2	6	13	2	
21	7	7	11	11	7	25	105	113	100	98	48	41	95	39	32	22	22	6	11	31	48	22	34	104	43	
22	83	91	60	61	27	38	39	39	58	61	52	21	28	66	17	18	8	23	20	15	4	6	6	11	36	
23	6	25	30	20	31	19	12	16	13	8	M	M	17	16	23	18	19	15	23	22	24	13	14	25	19	
24	15	11	12	13	13	17	18	15	13	16	18	15	11	8	14	12	12	18	14	15	12	13	9	19	14	
25	25	22	28	32	21	19	15	24	18	14	20	18	16	14	14	17	19	13	13	21	18	13	13	18	19	
26	11	10	11	8	9	9	9	12	13	10	16	12	7	7	9	9	7	8	9	11	9	10	10	15	10	
27	11	12	10	10	9	9	10	9	10	9	9	11	11	8	9	10	11	10	11	11	10	13	14	16	11	
28	11	12	10	10	11	11	11	10	10	10	11	11	10	10	9	11	33	28	58	45	32	21	24	43	19	
29	25	17	31	37	28	15	23	28	67	79	101	55	14	11	10	9	5	11	15	20	21	15	13	21	28	
30	15	15	14	13	12	17	28	55	56	68	92	34	17	14	26	18	13	13	16	28	38	40	25	42	30	
31	28	29	16	13	17	17	37	29	45	80	58	27	29	42	16	19	22	16	23	24	26	32	21	28	29	

MONTHLY STATISTICS:

GEOM		ARITH -----PERCENTILES-----							-----RANGE-----				STN GEOM	PERCENT	NO. OF TIMES	
MEAN	MEDIAN	MEAN	50	90	95	98	99	1-HR	24-HR	DEVIATION	VALID DATA	ABOVE OBJECTIVE				
14	14	18	14	37	50	78	94	0	-	113	0	-	43	2	99	0

- NOTES: 1. FLAGS FOR INVALID DATA :
- D: DYNAMIC CALIBRATION
 - T: TELEMETRY/DATALOGGR FAULT
 - M: MAINTENANCE OR ANALYZER FAULT
 - P: POWER FAILURE

THE HONGKONG ELECTRIC COMPANY, LTD.
AIR QUALITY DATA MONTHLY TIME SERIES REPORT
MONTH: JULY

STATION : AP LEI CHAU
POLLUTANT : NITROGEN DIOXIDE

YEAR : 2014
UNIT : MICROGRAMS/CUBIC METER

DAY	1	2	3	4	5	6	7	8	9	10	11	12	13	14	15	16	17	18	19	20	21	22	23	24	MEAN	
1	2	0	0	0	0	0	4	0	5	4	9	9	5	1	3	11	7	6	7	29	21	26	2	4	6	
2	7	M	4	6	4	0	18	11	16	13	7	2	3	3	7	M	M	15	2	3	3	4	2	6		
3	2	1	6	0	0	3	13	5	4	5	5	3	5	5	10	8	5	4	0	2	10	2	2	11	5	
4	4	2	3	2	0	0	3	1	0	3	2	0	0	3	3	2	4	11	6	11	8	9	9	3	4	
5	0	0	0	0	0	0	2	2	0	0	1	0	0	0	0	1	0	4	0	4	6	2	0	0	1	
6	3	0	0	0	1	10	9	1	1	0	0	1	3	1	2	6	7	4	3	16	0	9	6	10	4	
7	25	25	8	6	3	0	20	10	20	45	41	32	45	53	74	80	49	57	94	74	90	100	89	47	45	
8	34	27	39	28	78	32	25	30	48	42	56	61	62	46	14	27	28	40	30	16	48	82	71	35	42	
9	66	58	10	13	23	39	64	76	63	54	46	M	41	21	21	25	23	25	31	12	0	1	0	0	31	
10	1	3	2	6	0	0	0	1	2	19	5	4	21	14	3	2	3	10	4	6	11	7	8	3	6	
11	0	7	6	5	0	10	11	6	13	7	0	1	0	1	0	3	5	1	0	2	0	7	2	0	4	
12	0	0	0	0	0	0	10	3	1	1	0	0	0	0	0	0	3	0	0	0	6	5	5	6	2	
13	0	0	3	3	2	1	11	7	2	5	5	1	1	3	0	1	4	0	4	0	2	5	12	0	3	
14	2	1	0	2	1	5	2	3	1	4	14	4	4	4	1	3	7	3	9	10	15	2	3	3	4	
15	2	3	0	6	3	2	4	4	3	0	5	1	1	1	1	1	7	7	14	12	9	6	3	18	5	
16	9	M	3	1	1	1	1	1	0	0	0	0	0	0	0	0	0	0	1	0	0	0	0	0	1	
17	0	0	0	0	0	0	0	0	1	0	0	0	0	0	0	0	0	0	0	0	0	0	0	0	0	0
18	0	0	0	0	0	0	0	0	0	0	0	0	0	0	0	0	0	0	0	0	0	0	0	0	0	0
19	0	0	0	0	0	0	0	0	0	0	0	0	0	0	0	0	0	0	0	0	0	2	0	2	0	
20	0	1	0	0	0	2	4	0	0	0	0	0	0	0	0	0	0	1	1	0	1	2	3	2	1	
21	0	3	14	12	7	18	28	32	36	39	35	39	49	36	35	30	34	19	16	23	37	19	38	54	27	
22	46	47	40	27	7	32	42	43	33	39	35	22	22	61	42	33	29	48	31	27	5	12	12	5	31	
23	9	32	42	26	31	22	18	22	15	13	M	M	17	13	24	22	24	19	15	7	13	3	2	16	18	
24	2	0	3	4	1	4	14	9	9	9	8	5	3	0	4	4	2	11	5	3	1	5	0	20	5	
25	42	37	24	26	11	3	7	4	3	6	14	8	9	2	6	4	11	10	5	2	0	0	1	0	10	
26	0	0	0	0	0	0	1	6	7	0	1	0	11	19	4	0	0	0	0	0	0	0	0	0	2	
27	0	0	0	0	0	0	0	0	0	0	0	0	1	1	3	0	0	0	0	0	0	0	1	0	0	
28	0	0	0	0	1	0	3	0	0	0	0	0	0	0	0	0	8	10	24	23	11	3	3	21	4	
29	14	1	14	17	11	2	15	18	34	32	35	30	3	0	0	0	0	0	1	0	1	0	0	2	10	
30	0	M	1	0	1	27	50	54	49	48	47	14	4	3	9	4	24	29	13	18	20	14	1	18	19	
31	18	7	1	0	0	3	33	36	26	25	22	18	18	27	19	22	24	23	23	20	19	10	2	3	17	

MONTHLY STATISTICS:

GEOM	ARITH-----PERCENTILES-----							-----RANGE-----				STN GEOM	PERCENT	NO. OF TIMES		
MEAN	MEDIAN	MEAN	50	90	95	98	99	1-HR		24-HR	DEVIATION	VALID DATA	ABOVE OBJECTIVE			
													1-HR			
8	3	10	3	32	46	61	75	0	-	100	0	-	45	3	99	0

- NOTES: 1. FLAGS FOR INVALID DATA :
- D: DYNAMIC CALIBRATION
 - T: TELEMETRY/DATALOGGR FAULT
 - M: MAINTENANCE OR ANALYZER FAULT
 - P: POWER FAILURE

THE HONGKONG ELECTRIC COMPANY, LTD.
AIR QUALITY DATA MONTHLY TIME SERIES REPORT
MONTH: AUGUST

STATION : AP LEI CHAU
POLLUTANT : SULPHUR DIOXIDE

YEAR : 2014
UNIT : MICROGRAMS/CUBIC METER

DAY	1	2	3	4	5	6	7	8	9	10	11	12	13	14	15	16	17	18	19	20	21	22	23	24	MEAN	
1	20	21	18	18	16	29	26	23	24	45	17	28	43	29	31	12	17	15	14	21	23	15	14	17	22	
2	12	16	57	25	17	18	20	12	18	29	20	27	26	22	12	16	17	23	20	31	23	19	27	35	23	
3	15	12	44	23	29	19	47	23	14	21	22	34	41	25	21	9	21	11	24	24	36	19	26	22	24	
4	20	17	26	18	15	15	32	20	17	14	41	29	16	21	25	17	27	23	28	20	23	19	14	20	22	
5	14	15	13	13	13	13	13	19	36	41	21	36	18	10	11	17	16	17	17	17	15	14	16	24	18	
6	17	14	14	11	9	25	32	40	43	17	12	9	17	28	14	25	24	22	17	13	16	15	22	22	20	
7	24	21	34	22	16	20	13	27	19	34	21	33	17	18	20	21	14	16	14	15	37	15	12	29	21	
8	18	26	42	31	15	19	19	24	41	38	29	23	16	15	24	14	17	16	20	26	15	27	23	34	24	
9	14	16	14	18	21	21	23	41	28	16	27	23	13	23	21	16	16	19	14	27	28	18	19	29	21	
10	29	27	19	17	16	17	21	14	25	35	22	15	21	19	20	12	13	18	15	15	25	18	35	24	21	
11	17	22	30	20	27	26	39	23	14	33	14	15	27	20	13	19	26	19	21	23	15	20	25	19	22	
12	13	17	19	16	16	21	17	20	23	19	22	14	12	11	14	25	13	16	11	10	10	12	24	21	17	
13	17	13	17	17	16	13	10	10	10	12	22	10	10	12	15	15	22	13	15	18	13	16	14	18	15	
14	23	32	31	23	27	23	23	21	17	15	18	20	17	19	20	23	11	15	22	27	25	15	38	42	23	
15	39	27	41	29	16	11	11	26	57	37	18	22	28	30	27	21	21	21	16	20	26	14	20	22	25	
16	14	18	20	28	19	31	17	25	31	28	22	25	17	18	13	18	19	28	21	17	19	16	13	28	21	
17	26	26	20	13	16	23	25	16	28	25	25	20	33	14	20	17	14	13	26	22	14	38	26	18	22	
18	18	22	23	14	11	23	19	27	29	20	24	22	22	14	18	18	22	15	25	28	24	19	21	24	21	
19	20	23	18	11	10	26	9	16	20	13	15	15	24	13	12	17	17	27	18	17	14	15	26	27	18	
20	21	16	13	18	20	18	9	13	10	22	31	12	14	22	17	14	16	25	13	20	18	18	17	17	17	
21	14	26	16	14	12	19	21	12	12	10	11	11	13	14	16	16	17	18	17	19	17	19	21	33	17	
22	32	23	23	19	17	18	16	15	21	15	11	13	14	25	32	37	30	19	17	23	31	36	26	30	23	
23	24	44	46	29	21	22	34	38	37	23	32	39	30	18	20	10	14	18	24	21	17	31	27	21	27	
24	47	21	15	19	19	15	20	27	29	18	30	20	19	15	13	14	15	18	15	19	14	15	15	19	20	
25	14	16	13	11	11	13	12	12	12	11	9	10	10	10	10	10	11	13	16	19	17	14	16	19	13	
26	13	11	15	14	12	11	13	12	13	12	11	9	9	9	8	3	4	8	16	16	16	16	12	11	14	11
27	12	11	11	11	12	11	10	12	12	14	12	12	12	9	9	10	12	11	12	12	11	9	9	14	11	
28	10	11	11	11	10	9	11	12	12	11	8	9	9	10	9	7	9	11	10	15	13	15	M	M	11	
29	M	M	M	M	M	M	M	M	M	M	5	10	10	10	10	10	11	10	11	14	11	10	10	15		
30	13	13	13	13	13	14	12	11	13	11	11	10	10	10	9	3	7	9	17	18	15	12	8	15	12	
31	11	10	13	11	11	11	12	13	11	10	9	10	10	9	11	10	11	10	20	11	9	12	11	16	11	

MONTHLY STATISTICS:

GEOM	ARITH-----PERCENTILES-----										-----RANGE-----				STN GEOM	PERCENT	NO. OF TIMES
MEAN	MEDIAN	MEAN	50	90	95	98	99	1-HR		24-HR		DEVIATION	VALID DATA	ABOVE OBJECTIVE			
17	17	19	17	29	34	41	44	3	-	57	11	-	27	1	98	0	

NOTES: 1. FLAGS FOR INVALID DATA :
D: DYNAMIC CALIBRATION
T: TELEMETRY/DATALOGGR FAULT
M: MAINTENANCE OR ANALYZER FAULT
P: POWER FAILURE

THE HONGKONG ELECTRIC COMPANY, LTD.
AIR QUALITY DATA MONTHLY TIME SERIES REPORT
MONTH: AUGUST

STATION : AP LEI CHAU
POLLUTANT : NITROGEN DIOXIDE

YEAR : 2014
UNIT : MICROGRAMS/CUBIC METER

DAY	1	2	3	4	5	6	7	8	9	10	11	12	13	14	15	16	17	18	19	20	21	22	23	24	MEAN
1	4	2	0	1	1	4	9	6	5	11	5	16	27	32	35	16	30	24	29	23	21	13	16	4	14
2	22	35	88	18	3	12	25	17	7	16	3	9	9	8	13	22	24	18	12	15	1	2	9	14	17
3	5	3	39	15	17	4	50	31	6	8	7	14	17	12	15	6	25	9	14	8	8	0	5	1	13
4	2	0	4	4	1	0	13	2	4	7	13	16	5	10	11	10	M	12	12	2	0	0	0	0	6
5	0	0	0	0	0	0	8	9	12	13	9	16	3	0	5	7	0	0	0	0	0	0	0	0	4
6	0	2	3	15	11	26	36	37	25	14	9	1	11	19	18	17	12	12	6	5	6	6	15	4	13
7	8	8	18	12	3	11	2	20	28	33	14	19	11	11	14	9	10	13	4	5	16	4	1	10	12
8	4	11	23	18	7	8	12	10	15	14	17	16	9	8	10	8	17	10	10	20	4	10	12	15	12
9	0	2	1	2	10	10	10	19	10	2	22	13	9	13	7	4	3	5	6	15	15	6	4	15	8
10	19	22	12	4	4	11	13	4	14	23	11	4	12	9	9	2	5	7	7	2	18	8	20	8	10
11	4	9	18	9	20	24	31	14	8	25	8	13	19	8	9	21	28	17	12	12	2	10	14	2	14
12	9	5	8	7	7	12	18	16	23	17	24	11	9	6	23	29	12	21	3	7	10	7	23	8	13
13	5	M	17	12	14	3	6	15	22	18	24	7	5	3	27	25	20	13	23	33	25	32	22	7	16
14	12	11	15	8	13	8	5	6	4	1	3	7	1	6	11	13	7	9	16	25	19	8	26	29	11
15	28	18	27	25	7	5	8	12	33	18	10	15	22	20	16	10	17	22	15	4	12	5	19	11	16
16	3	8	9	18	7	12	6	15	14	20	18	20	17	15	14	17	14	14	12	4	9	5	2	17	12
17	13	18	11	2	2	8	12	3	7	11	11	6	11	5	7	9	10	4	10	5	3	16	12	3	8
18	6	9	10	1	0	6	15	18	10	6	13	13	12	10	16	19	7	6	11	9	10	10	6	13	10
19	6	6	4	0	1	13	2	12	20	10	12	9	7	3	3	7	16	25	17	25	10	12	20	33	11
20	34	26	18	23	18	13	7	33	20	25	25	2	2	12	12	10	25	20	19	36	40	40	41	25	22
21	6	21	11	5	6	7	8	9	7	1	0	0	0	0	0	0	1	2	0	1	3	8	5	14	5
22	18	9	4	1	5	12	16	1	2	0	0	0	1	4	3	9	12	5	3	8	16	18	8	6	7
23	3	22	18	17	6	2	18	18	9	4	9	11	3	2	1	1	1	3	6	4	2	16	9	8	8
24	23	7	0	1	3	0	4	10	9	0	3	2	2	0	0	0	0	4	5	6	0	1	2	6	4
25	2	5	2	0	0	5	7	5	0	0	0	0	0	0	0	0	0	0	3	3	3	0	3	7	2
26	3	1	2	0	0	0	2	2	0	0	0	0	0	0	0	0	0	0	0	0	0	0	0	1	0
27	0	M	0	0	0	0	0	1	0	5	4	1	0	0	0	0	0	0	0	0	0	0	0	1	1
28	0	0	0	0	0	0	0	0	0	0	0	0	0	0	0	0	0	0	0	1	0	2	M	M	0
29	M	M	M	M	M	M	M	M	M	M	0	0	0	0	0	0	0	0	1	0	10	7	9	2	
30	2	11	5	1	1	0	11	6	1	5	1	0	0	0	0	0	0	0	0	0	0	0	0	0	2
31	0	0	0	0	0	0	0	0	0	0	0	0	0	0	2	0	0	0	5	1	2	0	0	1	0

MONTHLY STATISTICS:

GEOM	ARITH-----PERCENTILES-----										RANGE-----		STN GEOM	PERCENT	NO. OF TIMES	
MEAN	MEDIAN	MEAN	50	90	95	98	99	1-HR		24-HR		DEVIATION	VALID DATA	ABOVE OBJECTIVE		
8	7	9	7	21	25	33	36	0	-	88	0	-	22	2	98	1-HR
																0

- NOTES: 1. FLAGS FOR INVALID DATA :
- D: DYNAMIC CALIBRATION
 - T: TELEMETRY/DATALOGGR FAULT
 - M: MAINTENANCE OR ANALYZER FAULT
 - P: POWER FAILURE

THE HONGKONG ELECTRIC COMPANY, LTD.
AIR QUALITY DATA MONTHLY TIME SERIES REPORT
MONTH: SEPTEMBER

STATION : AP LEI CHAU
POLLUTANT : SULPHUR DIOXIDE

YEAR : 2014
UNIT : MICROGRAMS/CUBIC METER

DAY	1	2	3	4	5	6	7	8	9	10	11	12	13	14	15	16	17	18	19	20	21	22	23	24	MEAN
1	11	13	13	11	12	11	13	12	11	9	10	9	10	11	12	15	16	16	14	15	12	12	18	20	13
2	26	24	17	12	34	34	19	32	174	141	60	36	35	29	48	30	21	20	23	40	36	46	27	32	42
3	21	23	27	28	37	22	22	20	18	27	42	31	28	28	13	6	15	18	27	28	32	21	15	29	24
4	18	20	30	19	23	31	46	38	40	64	58	46	36	20	24	14	17	19	14	15	17	17	18	19	28
5	17	12	11	11	10	12	11	13	11	12	9	9	10	10	10	9	7	8	18	17	12	12	13	16	12
6	13	13	14	13	11	13	13	13	12	10	10	10	11	11	10	12	15	16	18	21	17	17	15	18	14
7	13	12	13	12	11	11	11	12	12	11	12	11	10	10	10	11	11	14	12	9	11	10	11	16	12
8	14	13	11	11	10	11	10	11	11	13	22	11	13	17	31	46	41	20	14	32	20	13	14	39	19
9	39	31	29	26	14	18	35	19	27	40	35	17	17	23	23	22	21	30	18	18	21	28	27	48	26
10	30	41	63	33	25	36	60	31	28	29	75	41	27	29	20	22	28	19	25	30	27	22	18	18	32
11	18	16	14	17	14	16	16	16	14	11	10	9	9	10	M	M	0	0	0	0	0	0	0	2	9
12	0	0	0	0	0	0	0	0	0	0	0	0	0	0	0	0	0	0	1	0	0	0	0	2	0
13	1	2	2	2	2	2	3	2	1	0	1	3	2	4	1	2	2	4	5	7	4	3	3	4	3
14	0	0	0	0	0	0	0	0	0	0	0	0	0	0	0	0	0	1	1	0	0	0	0	6	0
15	0	15	33	23	9	6	4	0	0	0	0	0	0	0	0	0	0	0	0	0	0	0	0	5	4
16	0	0	0	0	0	0	0	0	0	0	0	0	0	0	0	0	0	0	0	0	0	0	0	4	0
17	0	0	0	0	2	0	0	0	0	0	0	0	0	0	0	0	0	0	0	0	0	0	0	16	1
18	2	0	1	4	1	1	1	0	0	0	13	57	9	15	35	9	18	27	13	17	30	27	31	37	15
19	11	19	10	21	38	10	20	28	23	23	17	M	40	33	36	11	14	20	23	22	47	24	24	63	25
20	38	19	16	1	0	0	0	0	0	0	0	0	4	0	0	0	1	5	5	2	2	0	0	7	4
21	0	0	0	0	0	0	1	0	0	2	2	1	0	0	0	0	0	0	2	2	0	0	0	10	1
22	0	0	0	0	0	0	0	1	40	16	13	29	15	27	1	15	17	16	9	11	29	20	13	39	13
23	28	25	66	20	39	67	44	15	28	41	41	3	25	14	7	17	15	33	7	12	4	6	12	28	25
24	28	56	38	29	25	21	19	14	24	31	50	68	57	30	30	22	14	14	20	18	23	23	19	27	29
25	5	24	17	9	14	15	20	16	18	31	D	D	27	23	21	11	8	8	13	11	11	15	10	15	16
26	7	6	32	11	3	6	15	20	22	15	23	8	5	13	17	1	3	1	0	0	0	0	1	7	9
27	1	1	2	5	5	30	15	10	24	29	34	32	0	0	0	2	5	6	3	5	4	1	5	10	10
28	3	9	2	0	0	0	1	0	6	28	35	23	9	3	6	6	5	4	5	5	2	0	0	8	7
29	10	4	8	9	10	9	4	4	22	56	37	9	17	11	5	4	7	5	23	19	20	32	13	22	15
30	7	19	21	13	15	18	9	2	6	15	35	35	22	18	30	34	33	22	43	40	8	19	77	18	23

MONTHLY STATISTICS:

GEOM	ARITH ----- PERCENTILES -----							----- RANGE -----				STN GEOM	PERCENT	NO. OF TIMES		
MEAN	MEDIAN	MEAN	50	90	95	98	99	1-HR	24-HR	DEVIATION	VALID DATA	ABOVE OBJECTIVE				
13	11	14	11	32	40	57	64	0	-	174	0	-	42	3	99	0

- NOTES: 1. FLAGS FOR INVALID DATA :
- D: DYNAMIC CALIBRATION
 - T: TELEMETRY/DATALOGGR FAULT
 - M: MAINTENANCE OR ANALYZER FAULT
 - P: POWER FAILURE

THE HONGKONG ELECTRIC COMPANY, LTD.
AIR QUALITY DATA MONTHLY TIME SERIES REPORT
MONTH: SEPTEMBER

STATION : AP LEI CHAU
POLLUTANT : NITROGEN DIOXIDE

YEAR : 2014
UNIT : MICROGRAMS/CUBIC METER

DAY	1	2	3	4	5	6	7	8	9	10	11	12	13	14	15	16	17	18	19	20	21	22	23	24	MEAN	
1	0	0	0	0	0	0	0	0	0	0	0	0	0	0	0	0	0	2	3	2	0	1	10	6	1	
2	8	12	8	0	15	18	13	20	34	35	18	11	8	7	17	20	20	26	17	20	8	26	22	14	17	
3	17	26	23	9	12	3	6	1	1	5	18	14	19	24	23	19	15	21	14	9	14	7	1	12	13	
4	7	12	31	21	22	30	47	48	52	65	77	89	85	56	58	35	75	146	105	45	8	1	0	0	46	
5	0	0	0	0	0	0	0	2	3	0	0	0	0	0	0	0	0	0	0	4	12	20	7	3	2	
6	0	0	0	0	0	1	9	15	20	12	4	1	0	0	0	0	0	2	2	11	1	0	0	0	3	
7	0	0	0	0	0	0	0	0	0	0	0	0	0	0	0	0	0	0	0	0	0	0	0	0	0	
8	0	0	0	0	0	0	0	0	0	0	1	1	0	3	8	24	20	5	1	13	5	0	0	0	27	5
9	28	21	12	14	3	8	21	3	11	23	15	3	9	11	13	10	6	14	6	4	16	20	15	32	13	
10	12	M	39	19	11	21	35	18	8	19	23	13	7	6	2	7	17	18	12	12	7	5	6	4	14	
11	5	8	1	4	2	4	12	10	1	0	0	0	0	0	M	M	13	5	3	3	3	5	3	2	4	
12	0	0	0	0	0	0	1	0	3	0	0	2	4	0	7	9	13	9	18	16	10	6	1	1	4	
13	0	0	0	0	1	10	7	3	1	3	0	0	1	2	1	2	6	11	7	9	3	2	3	1	3	
14	1	0	1	0	4	8	12	7	2	2	0	0	0	1	0	1	3	16	29	13	1	9	19	11	6	
15	15	49	79	69	66	49	37	34	13	15	9	16	9	8	9	16	10	3	0	0	0	0	0	0	21	
16	0	0	0	0	0	0	0	0	0	0	0	0	0	0	0	0	0	0	0	0	0	0	0	0	0	
17	0	0	0	0	0	0	0	2	0	0	0	0	0	0	0	0	0	2	0	1	0	2	2	3	1	
18	4	4	14	27	17	13	18	27	12	12	29	42	20	27	36	30	53	48	33	35	37	42	48	40	28	
19	22	36	23	35	51	47	51	57	60	66	66	M	63	50	72	34	75	65	55	45	81	40	95	122	57	
20	117	96	70	16	4	5	14	18	17	32	30	34	44	23	22	27	30	28	31	22	20	16	15	6	31	
21	6	7	6	2	3	3	9	10	13	22	22	16	9	17	13	10	14	19	19	15	14	10	10	13	12	
22	11	10	5	3	2	5	15	29	54	50	52	42	29	34	5	21	32	26	9	23	33	31	24	65	25	
23	68	46	84	69	65	74	67	54	59	59	46	9	26	15	15	24	24	43	4	4	2	5	4	20	37	
24	27	M	43	40	49	40	41	37	46	66	69	75	55	33	31	30	23	23	18	14	24	21	22	22	37	
25	3	19	19	2	11	21	41	44	37	57	D	D	12	11	11	2	7	7	2	1	9	8	3	13	15	
26	7	12	39	11	1	8	40	49	44	44	30	11	5	16	14	1	5	1	1	0	0	0	0	0	14	
27	0	0	1	1	1	23	23	14	18	18	16	16	1	0	0	3	3	3	1	0	1	0	1	2	6	
28	3	5	3	3	0	0	5	11	16	15	22	17	4	2	4	9	3	6	10	7	1	0	0	2	6	
29	9	7	8	8	9	11	12	21	28	33	32	22	21	16	15	25	25	37	21	20	21	40	21	18	20	
30	8	30	34	43	52	43	36	33	33	46	59	68	50	47	50	53	M	37	38	53	20	34	82	18	42	

MONTHLY STATISTICS:

GEOM	ARITH -----PERCENTILES-----							-----RANGE-----					STN GEOM	PERCENT	NO. OF TIMES	
MEAN	MEDIAN	MEAN	50	90	95	98	99	1-HR		24-HR			DEVIATION	VALID DATA	ABOVE OBJECTIVE	
12	9	16	9	46	59	75	85	0	-	146	0	-	57	3	99	0

NOTES: 1. FLAGS FOR INVALID DATA :
D: DYNAMIC CALIBRATION
T: TELEMETRY/DATALOGGR FAULT
M: MAINTENANCE OR ANALYZER FAULT
P: POWER FAILURE

THE HONGKONG ELECTRIC COMPANY, LTD.
AIR QUALITY DATA MONTHLY TIME SERIES REPORT
MONTH: JULY

STATION : CHEUNG CHAU
POLLUTANT : SULPHUR DIOXIDE

YEAR : 2014
UNIT : MICROGRAMS/CUBIC METER

DAY	1	2	3	4	5	6	7	8	9	10	11	12	13	14	15	16	17	18	19	20	21	22	23	24	MEAN
1	0	0	0	0	0	0	0	0	0	0	0	0	0	0	0	0	0	0	0	0	0	0	0	0	0
2	0	0	0	0	0	0	0	0	1	0	0	0	0	0	0	0	0	0	0	0	0	0	0	0	0
3	0	0	0	0	0	0	0	0	0	0	0	0	0	1	0	0	0	0	0	0	0	0	0	0	0
4	0	0	0	0	0	0	0	0	0	0	0	0	0	0	0	0	0	0	0	0	0	0	0	0	0
5	0	0	0	0	0	0	0	0	0	0	0	0	0	0	0	0	0	0	0	0	0	0	0	0	0
6	0	0	0	0	0	0	0	0	0	0	0	0	0	0	0	1	1	0	0	0	0	0	1	0	0
7	0	0	0	0	0	0	0	0	0	0	0	0	1	0	0	1	2	1	0	0	0	0	0	0	0
8	1	0	1	1	2	5	5	8	8	7	10	20	21	11	6	4	4	3	0	0	5	9	11	10	6
9	6	2	8	13	22	18	19	15	10	10	21	9	3	7	6	1	1	1	3	0	1	1	0	0	7
10	0	0	0	0	0	0	0	1	4	0	0	9	21	7	2	0	0	0	0	0	0	0	0	0	2
11	0	0	0	0	0	0	0	1	1	0	0	0	0	0	0	0	0	0	0	0	0	0	0	0	0
12	1	0	0	0	0	0	0	0	0	0	0	0	0	0	0	0	0	0	0	0	0	0	0	0	0
13	0	0	0	0	0	0	0	0	0	0	0	0	0	0	1	0	0	0	0	0	0	0	0	0	0
14	0	0	0	0	0	0	0	0	0	0	0	0	0	0	0	0	0	0	0	0	0	0	0	0	0
15	0	0	0	0	0	0	0	0	0	0	0	0	0	0	0	0	0	0	0	0	0	0	0	0	0
16	0	0	0	0	0	2	5	10	13	11	10	8	2	0	0	0	1	0	0	0	5	2	1	2	3
17	4	5	1	5	7	6	12	4	0	1	4	6	0	0	0	0	0	0	0	0	0	0	1	0	2
18	0	0	0	0	0	0	0	0	0	0	0	0	0	0	0	0	0	0	0	0	0	0	0	0	0
19	0	0	0	0	0	0	0	0	0	0	0	0	0	0	0	0	5	4	4	2	0	0	1	2	1
20	0	1	2	1	2	2	3	2	2	5	3	3	4	4	2	2	1	2	9	5	4	5	6	6	3
21	5	4	2	3	2	3	3	5	6	9	8	4	5	6	6	7	8	5	2	1	1	2	2	2	4
22	2	2	1	11	8	4	2	5	23	29	10	12	11	12	6	4	4	2	1	0	0	0	0	0	6
23	1	2	3	4	5	5	2	2	0	0	0	3	2	0	1	0	0	0	0	0	0	0	0	0	1
24	0	0	0	0	0	0	0	0	0	0	0	0	0	0	0	0	0	1	0	0	0	0	0	0	0
25	0	0	0	0	0	0	0	0	0	0	0	0	0	0	0	0	0	0	0	1	0	0	0	0	0
26	0	0	0	0	0	0	0	0	0	0	0	1	2	4	6	1	1	0	0	0	0	0	0	0	1
27	0	0	0	0	0	0	0	0	1	1	2	2	1	0	1	2	7	1	1	0	1	3	0	0	1
28	0	0	1	2	3	3	5	17	13	5	3	3	4	4	6	15	21	10	10	5	0	1	0	2	6
29	1	0	1	2	4	2	2	3	3	2	7	7	13	11	8	16	8	9	7	4	4	1	1	5	5
30	4	6	6	8	7	4	2	6	5	3	5	3	7	7	8	6	5	2	2	0	0	0	0	0	4
31	0	0	0	0	0	0	2	4	4	2	3	6	10	5	0	2	0	0	0	0	0	0	0	0	2

MONTHLY STATISTICS:

GEOM	ARITH -----PERCENTILES-----							-----RANGE-----					STN GEOM	PERCENT	NO. OF TIMES	
MEAN	MEDIAN	MEAN	50	90	95	98	99	1-HR		24-HR			DEVIATION	VALID DATA	ABOVE OBJECTIVE	
3	0	2	0	6	9	13	20	0	-	29	0	-	7	2	100	0

- NOTES: 1. FLAGS FOR INVALID DATA :
- D: DYNAMIC CALIBRATION
 - T: TELEMETRY/DATALOGGR FAULT
 - M: MAINTENANCE OR ANALYZER FAULT
 - P: POWER FAILURE

THE HONGKONG ELECTRIC COMPANY, LTD.
AIR QUALITY DATA MONTHLY TIME SERIES REPORT
MONTH: JULY

STATION : CHEUNG CHAU
POLLUTANT : NITROGEN DIOXIDE

YEAR : 2014
UNIT : MICROGRAMS/CUBIC METER

DAY	1	2	3	4	5	6	7	8	9	10	11	12	13	14	15	16	17	18	19	20	21	22	23	24	MEAN
1	0	1	1	0	0	0	2	2	0	0	0	1	0	1	6	7	0	12	11	17	16	7	2	3	4
2	5	M	7	2	3	3	17	11	4	3	0	1	0	1	0	1	2	1	1	1	0	1	0	3	
3	1	1	0	0	4	3	2	2	2	2	0	0	1	2	0	1	0	1	0	1	1	2	0	1	1
4	0	0	0	1	0	1	1	0	0	1	0	1	0	0	1	1	1	1	0	0	0	0	1	1	0
5	0	1	0	1	0	0	0	0	3	4	0	0	1	1	1	1	1	1	3	4	1	1	0	0	1
6	3	1	0	0	1	3	1	1	1	5	4	1	2	4	4	5	3	4	2	1	1	5	8	25	4
7	29	18	8	5	1	2	21	19	7	20	30	16	39	43	54	33	35	50	37	42	54	42	36	47	29
8	59	55	57	40	51	60	67	48	53	36	36	40	34	13	9	5	6	5	5	7	73	92	71	65	41
9	44	34	78	104	111	101	97	67	42	27	50	20	8	7	8	5	5	5	6	2	3	1	0	4	35
10	2	1	1	3	0	0	1	19	31	4	12	33	46	25	6	2	2	3	4	10	5	1	0	2	9
11	3	5	8	3	1	0	18	27	26	14	7	5	8	7	3	7	3	2	20	24	3	5	16	22	10
12	4	3	2	1	1	0	0	0	0	0	1	0	0	0	0	0	3	7	2	6	21	1	1	3	2
13	1	0	0	0	2	4	3	0	1	3	0	1	6	1	3	10	3	4	3	2	3	1	2	7	3
14	1	6	4	3	4	6	6	2	8	9	15	13	1	2	1	1	2	5	1	5	5	1	6	4	5
15	0	1	2	1	2	1	2	5	2	2	0	0	0	1	0	1	2	1	3	3	2	0	0	2	1
16	3	1	3	10	21	22	27	24	16	10	8	7	3	1	1	1	3	1	1	3	13	9	5	13	9
17	12	18	27	32	37	32	39	19	11	9	21	20	11	9	7	3	12	20	6	22	22	10	21	19	18
18	1	15	17	10	2	0	0	0	0	0	0	0	0	0	0	0	0	3	5	2	2	1	0	1	2
19	1	0	1	3	3	3	1	1	1	2	1	3	1	2	1	2	5	6	6	13	5	7	11	14	4
20	10	11	19	12	14	24	32	18	13	8	5	6	6	5	2	5	3	6	18	20	14	15	18	17	13
21	17	16	17	26	24	26	28	30	27	18	18	16	23	23	33	36	38	18	13	14	8	20	46	13	23
22	28	54	25	52	48	31	8	10	30	41	24	18	10	20	11	5	14	17	10	1	8	29	14	5	21
23	13	10	23	21	20	19	10	10	5	3	3	5	4	2	4	2	2	1	1	1	0	0	0	0	7
24	0	0	2	0	0	1	0	0	0	2	1	2	0	2	5	2	1	5	0	2	2	0	0	16	2
25	10	19	6	1	0	0	0	0	1	4	6	6	1	0	2	4	1	1	1	2	4	2	1	2	3
26	1	2	2	1	1	6	6	12	15	13	4	3	11	37	34	30	9	8	5	8	9	10	11	5	10
27	1	3	6	1	2	19	13	3	5	5	3	6	2	5	15	9	8	4	5	9	11	16	7	5	7
28	5	10	9	11	17	16	16	17	16	M	9	5	6	7	8	15	14	9	13	8	10	33	34	38	14
29	37	19	30	29	29	28	21	19	18	11	23	22	18	10	8	11	11	12	12	6	8	3	2	14	17
30	8	25	24	32	31	26	24	29	29	25	31	16	10	5	6	6	8	4	4	4	1	0	0	1	15
31	2	9	6	5	22	29	40	30	19	16	20	10	5	8	3	8	5	6	5	2	2	0	1	1	11

MONTHLY STATISTICS:

GEOM	ARITH-----PERCENTILES-----							-----RANGE-----				STN GEOM	PERCENT	NO. OF TIMES		
MEAN	MEDIAN	MEAN	50	90	95	98	99	1-HR		24-HR	DEVIATION	VALID DATA	ABOVE OBJECTIVE			
													1-HR			
6	5	10	5	29	39	54	69	0	-	111	0	-	41	3	100	0

- NOTES: 1. FLAGS FOR INVALID DATA :
- D: DYNAMIC CALIBRATION
 - T: TELEMETRY/DATALOGGR FAULT
 - M: MAINTENANCE OR ANALYZER FAULT
 - P: POWER FAILURE

THE HONGKONG ELECTRIC COMPANY, LTD.
AIR QUALITY DATA MONTHLY TIME SERIES REPORT
MONTH: AUGUST

STATION : CHEUNG CHAU
POLLUTANT : SULPHUR DIOXIDE

YEAR : 2014
UNIT : MICROGRAMS/CUBIC METER

DAY	1	2	3	4	5	6	7	8	9	10	11	12	13	14	15	16	17	18	19	20	21	22	23	24	MEAN
1	0	0	0	0	0	0	0	1	3	1	9	13	7	3	3	1	0	1	0	0	0	0	0	0	2
2	0	0	0	0	0	0	0	0	0	0	0	0	0	6	6	4	3	1	0	0	0	0	0	3	1
3	2	0	0	0	0	0	3	8	7	4	6	2	4	1	0	0	0	0	0	0	0	0	0	0	2
4	0	0	0	0	0	0	0	0	0	0	0	0	3	1	0	0	0	0	0	0	0	0	0	0	0
5	0	0	0	1	2	6	7	13	21	6	0	1	2	2	0	1	7	3	0	1	1	3	0	6	3
6	0	0	0	0	0	0	0	2	4	0	0	0	2	10	4	5	4	0	0	0	0	0	0	0	1
7	0	0	0	0	0	0	0	0	0	0	0	0	2	0	0	0	0	0	0	0	0	0	0	0	0
8	0	0	0	0	0	0	0	0	0	2	3	2	2	0	0	0	0	0	0	0	0	0	0	0	0
9	0	0	0	0	0	0	0	0	0	0	0	0	0	0	0	0	0	1	0	0	0	0	0	0	0
10	0	0	0	0	0	0	0	0	1	1	0	2	0	0	0	1	1	0	0	0	0	0	0	0	0
11	0	0	1	0	0	0	0	0	0	2	3	2	0	1	3	1	1	1	2	0	0	0	0	0	1
12	0	0	0	0	0	0	0	0	0	0	0	3	0	0	0	0	0	0	0	0	0	0	0	0	0
13	0	0	0	0	0	0	0	0	0	1	0	0	0	0	0	0	0	0	0	0	0	0	0	0	0
14	1	2	1	0	0	0	0	0	0	1	4	1	0	0	0	2	1	0	0	0	0	0	0	0	1
15	0	0	0	0	0	0	0	0	0	4	3	3	7	6	0	0	0	0	1	0	0	0	0	0	1
16	0	0	0	0	0	0	0	0	0	0	0	0	0	0	1	0	0	0	0	0	0	0	0	0	0
17	0	0	0	0	0	0	0	0	0	0	0	0	0	0	0	0	0	0	0	0	0	0	0	0	0
18	0	0	0	0	0	0	0	0	0	0	0	0	0	0	0	1	1	0	0	0	0	0	0	0	0
19	0	0	0	0	0	0	0	0	0	0	0	0	1	0	0	0	0	0	0	0	0	0	0	0	0
20	0	0	2	1	0	0	0	0	0	0	2	2	0	0	0	0	0	0	0	0	0	0	0	0	0
21	0	0	0	3	4	5	1	0	3	3	5	7	7	9	3	2	3	0	0	0	0	0	0	0	2
22	0	0	1	2	3	3	4	6	14	16	11	11	14	4	4	0	0	0	0	0	0	0	0	0	4
23	1	3	2	2	4	2	0	2	1	0	0	0	0	0	0	0	0	0	0	0	0	0	0	0	1
24	0	0	0	0	0	0	0	5	11	5	0	1	7	4	9	7	7	3	3	1	3	2	2	2	3
25	1	4	3	5	6	4	5	7	17	10	3	2	10	15	6	10	3	13	11	8	3	8	4	6	7
26	3	1	2	6	3	3	5	7	9	12	9	3	2	0	0	0	0	0	0	0	3	2	1	3	
27	1	0	0	0	0	3	1	1	3	0	1	1	1	1	4	6	2	0	0	0	0	0	0	0	1
28	0	0	0	0	0	0	0	0	0	7	8	P	P	P	P	P	P	P	0	0	2	1	1	0	1
29	0	0	0	1	5	10	6	3	3	0	1	0	0	1	1	1	11	8	1	6	5	4	4	4	3
30	3	1	2	1	2	4	5	8	8	12	8	3	0	0	0	0	0	1	3	3	3	2	1	1	3
31	2	1	0	0	0	0	0	1	2	1	2	0	1	0	0	0	1	0	0	0	0	1	1	1	1

MONTHLY STATISTICS:

GEOM	ARITH-----PERCENTILES-----							-----RANGE-----					STN GEOM	PERCENT	NO. OF TIMES	
MEAN	MEDIAN	MEAN	50	90	95	98	99	1-HR		24-HR			DEVIATION	VALID DATA	ABOVE OBJECTIVE	
3	0	1	0	4	7	11	13	0	-	21	0	-	7	2	99	0

NOTES: 1. FLAGS FOR INVALID DATA :
D: DYNAMIC CALIBRATION
T: TELEMETRY/DATALOGGR FAULT
M: MAINTENANCE OR ANALYZER FAULT
P: POWER FAILURE

THE HONGKONG ELECTRIC COMPANY, LTD.
AIR QUALITY DATA MONTHLY TIME SERIES REPORT
MONTH: AUGUST

STATION : CHEUNG CHAU
POLLUTANT : NITROGEN DIOXIDE

YEAR : 2014
UNIT : MICROGRAMS/CUBIC METER

DAY	1	2	3	4	5	6	7	8	9	10	11	12	13	14	15	16	17	18	19	20	21	22	23	24	MEAN
1	0	0	1	0	2	7	6	8	11	6	12	17	11	5	7	9	5	9	9	8	13	14	7	12	7
2	20	22	11	9	11	24	25	20	38	17	12	6	3	10	5	6	5	4	2	2	2	1	0	21	12
3	42	45	14	4	12	20	53	58	46	33	31	8	10	3	1	2	1	2	4	1	1	1	0	1	16
4	0	0	2	0	3	16	8	5	8	26	16	3	8	5	3	2	3	3	1	0	0	1	1	1	5
5	1	3	1	17	29	38	40	40	42	10	17	4	5	4	4	3	7	2	1	2	5	9	3	10	12
6	2	7	2	15	16	11	31	33	15	4	2	9	29	37	28	21	15	6	2	0	0	0	0	0	12
7	1	2	3	1	3	4	4	3	12	8	13	7	2	5	4	3	3	4	5	2	1	4	0	2	4
8	2	1	1	1	1	4	14	20	15	10	10	6	4	2	4	9	2	2	1	2	4	2	3	0	5
9	1	1	2	5	1	2	5	11	6	15	4	1	2	3	4	1	4	7	4	5	6	2	3	1	4
10	7	4	2	4	5	3	6	3	9	11	7	14	2	1	2	4	6	4	9	6	8	8	10	9	6
11	10	9	9	9	4	8	9	9	12	8	8	7	3	5	8	6	6	6	12	9	12	7	8	7	8
12	9	7	3	5	6	10	15	19	9	23	6	5	3	4	3	2	3	6	4	3	7	5	5	11	7
13	6	M	2	1	1	2	7	27	44	48	42	19	3	1	12	8	22	6	25	41	38	19	13	19	18
14	33	40	33	14	10	5	10	8	5	8	11	7	4	11	10	10	5	23	18	11	23	35	17	19	15
15	15	19	16	10	24	16	28	16	2	6	5	5	10	5	1	1	3	3	9	2	7	6	13	7	10
16	4	0	1	2	0	3	3	4	14	20	12	1	4	4	5	5	2	1	0	1	1	0	0	13	4
17	16	13	3	2	1	1	5	7	5	15	2	0	0	1	2	2	2	4	0	4	2	0	3	5	4
18	4	4	1	0	1	2	3	1	0	1	2	1	0	1	2	3	2	2	2	1	2	2	1	2	2
19	1	0	0	1	0	0	6	0	1	1	1	0	5	3	3	5	9	6	3	0	1	1	5	25	3
20	27	39	31	15	1	0	0	10	31	24	8	11	14	7	2	8	18	9	3	2	3	11	19	37	14
21	37	25	30	35	44	39	13	10	16	11	9	10	10	11	3	1	3	1	3	1	6	30	27	26	17
22	25	22	28	28	27	26	27	25	23	16	10	8	12	4	3	1	3	4	3	0	1	2	5	2	13
23	3	8	7	4	18	13	14	12	6	4	4	1	0	1	1	1	0	1	0	0	0	3	4	3	5
24	2	4	4	5	5	13	19	23	19	5	1	3	7	3	8	3	3	2	3	4	6	7	7	5	7
25	4	30	31	30	33	25	30	22	24	14	4	2	7	12	6	13	4	16	18	16	9	19	11	24	17
26	13	8	14	20	19	23	23	18	18	22	18	9	4	1	0	1	1	2	2	3	4	11	9	10	11
27	8	M	17	20	14	15	13	17	22	11	13	7	5	9	21	31	19	6	16	13	17	8	3	3	13
28	2	1	3	2	2	3	4	8	3	12	11	P	P	P	P	P	P	P	21	25	26	16	24	12	10
29	7	15	22	32	33	31	25	7	4	1	2	1	1	3	2	2	9	11	6	18	14	24	26	23	13
30	27	8	22	23	36	45	49	46	45	46	24	7	2	1	2	3	2	3	6	8	12	8	7	10	18
31	10	6	6	2	4	5	3	4	4	2	3	2	4	2	4	17	8	5	0	13	23	24	12	11	7

MONTHLY STATISTICS:

GEOM	ARITH-----PERCENTILES-----								-----RANGE-----				STN GEOM	PERCENT	NO. OF TIMES		
MEAN	MEDIAN	MEAN	50	90	95	98	99	1-HR	24-HR	DEVIATION	VALID DATA	ABOVE OBJECTIVE					
6	6	10	6	25	31	41	45	0	-	58	2	-	18	3	99	1-HR	0

NOTES: 1. FLAGS FOR INVALID DATA :
D: DYNAMIC CALIBRATION
T: TELEMETRY/DATALOGGR FAULT
M: MAINTENANCE OR ANALYZER FAULT
P: POWER FAILURE

THE HONGKONG ELECTRIC COMPANY, LTD.
AIR QUALITY DATA MONTHLY TIME SERIES REPORT
MONTH: SEPTEMBER

STATION : CHEUNG CHAU
POLLUTANT : SULPHUR DIOXIDE

YEAR : 2014
UNIT : MICROGRAMS/CUBIC METER

DAY	1	2	3	4	5	6	7	8	9	10	11	12	13	14	15	16	17	18	19	20	21	22	23	24	MEAN
1	2	5	3	3	1	2	1	3	2	3	1	2	7	12	9	11	3	9	6	9	12	12	12	15	6
2	15	14	10	8	12	14	12	17	18	7	11	7	13	9	7	2	1	1	1	0	0	0	0	0	7
3	0	0	0	0	0	0	0	0	1	1	1	1	3	0	1	2	1	0	0	0	0	0	0	0	0
4	0	0	1	2	4	6	5	14	14	22	19	22	20	20	15	0	0	2	8	21	19	10	6	4	10
5	4	2	2	0	2	0	2	0	5	3	0	0	0	0	0	1	0	0	0	2	1	1	1	3	1
6	3	3	5	3	3	1	7	6	13	9	9	5	1	3	8	7	10	6	5	5	6	3	7	5	6
7	2	2	3	5	5	1	3	0	2	1	0	0	2	0	0	0	0	0	0	0	0	0	0	1	1
8	0	1	1	0	1	1	1	2	2	0	1	0	0	0	0	0	0	0	1	0	0	0	0	0	0
9	0	0	0	0	0	0	0	0	0	0	0	0	0	0	0	0	0	0	0	0	0	0	0	0	0
10	0	0	0	0	0	0	0	1	1	0	0	0	0	0	1	0	0	0	0	0	0	2	0	0	0
11	0	2	4	5	5	6	5	8	9	8	5	6	5	2	0	2	1	5	4	3	2	3	5	2	4
12	2	0	1	0	0	0	0	0	1	1	0	1	2	0	0	2	1	0	0	0	0	0	0	0	0
13	0	0	0	0	0	0	0	0	0	0	2	2	1	0	0	0	5	17	9	6	5	2	1	5	2
14	1	1	1	1	2	3	4	10	16	10	3	1	1	10	5	7	8	14	4	4	0	2	2	7	5
15	9	8	7	4	4	4	6	5	10	9	5	2	1	4	3	1	1	0	0	0	0	0	0	2	4
16	0	0	0	0	0	0	0	0	0	0	0	0	0	0	0	0	0	0	0	0	0	0	0	0	0
17	0	0	0	0	0	0	0	0	0	0	0	0	0	1	1	0	0	0	0	0	0	0	0	0	0
18	0	0	0	0	0	4	5	3	7	8	9	8	7	15	8	5	3	4	3	6	6	3	1	0	4
19	0	0	0	0	0	1	3	12	19	19	22	37	30	23	25	15	10	11	10	6	5	5	5	5	11
20	10	10	4	2	1	0	0	0	1	1	3	2	1	2	3	2	1	1	0	1	1	0	3	2	2
21	2	1	1	2	2	3	2	2	2	4	5	6	8	6	3	2	2	2	3	4	2	4	7	5	3
22	5	3	2	1	1	2	2	3	3	2	3	2	4	9	9	13	10	6	3	3	3	2	2	1	4
23	1	3	2	1	2	4	4	3	3	6	8	9	9	5	7	8	7	6	3	4	4	1	0	2	4
24	2	2	1	1	0	1	1	3	10	21	13	11	11	8	11	7	6	5	4	5	5	2	1	0	5
25	0	3	2	1	0	1	0	2	4	4	3	4	5	5	4	4	2	1	0	0	0	0	0	0	2
26	0	0	0	0	0	0	0	0	4	10	5	10	D	D	4	2	3	2	1	0	0	5	2	1	2
27	1	0	0	0	0	0	0	0	0	0	1	3	13	12	15	7	7	3	0	2	2	3	2	2	3
28	2	1	2	4	4	3	4	6	9	18	13	9	6	6	8	8	11	4	4	3	4	3	1	1	6
29	2	0	0	0	0	0	0	0	0	0	0	1	4	3	2	0	1	1	0	0	0	0	0	0	1
30	0	0	0	0	0	0	1	5	9	16	10	12	17	28	36	22	12	4	2	3	5	5	5	9	8

MONTHLY STATISTICS:

GEOM		ARITH -----PERCENTILES-----							-----RANGE-----			STN GEOM	PERCENT	NO. OF TIMES		
MEAN	MEDIAN	MEAN	50	90	95	98	99	1-HR	24-HR	DEVIATION	VALID DATA	ABOVE OBJECTIVE				
4	2	3	2	10	13	19	22	0	-	37	0	-	11	2	100	0

- NOTES: 1. FLAGS FOR INVALID DATA :
- D: DYNAMIC CALIBRATION
 - T: TELEMETRY/DATALOGGR FAULT
 - M: MAINTENANCE OR ANALYZER FAULT
 - P: POWER FAILURE

THE HONGKONG ELECTRIC COMPANY, LTD.
AIR QUALITY DATA MONTHLY TIME SERIES REPORT
MONTH: SEPTEMBER

STATION : CHEUNG CHAU
POLLUTANT : NITROGEN DIOXIDE

YEAR : 2014
UNIT : MICROGRAMS/CUBIC METER

DAY	1	2	3	4	5	6	7	8	9	10	11	12	13	14	15	16	17	18	19	20	21	22	23	24	MEAN
1	19	22	16	20	14	13	15	13	4	4	4	3	6	8	9	13	5	10	11	23	32	33	35	34	15
2	34	34	33	31	33	34	31	27	27	7	11	8	12	10	9	6	6	5	8	4	2	1	3	14	16
3	10	3	2	1	0	1	8	10	11	11	13	15	17	8	10	7	4	4	1	2	1	2	2	1	6
4	6	10	20	39	39	40	41	41	34	57	52	58	37	35	42	28	55	71	112	151	110	61	9	3	48
5	6	4	8	6	9	6	14	5	22	16	1	0	1	3	4	4	2	1	3	7	8	7	39	29	9
6	11	9	12	7	15	17	39	33	46	47	39	32	11	5	8	9	14	11	12	10	12	7	15	17	18
7	8	14	35	23	27	23	33	23	21	9	5	7	9	4	6	5	7	1	2	3	7	3	11	14	13
8	6	13	14	8	13	11	9	7	6	5	4	1	1	1	0	1	1	1	9	4	6	6	5	1	6
9	0	1	0	1	2	0	0	4	3	1	0	0	0	1	0	1	2	2	0	0	0	2	1	8	1
10	1	M	0	4	3	6	16	24	10	12	3	5	1	3	3	3	3	2	3	0	3	4	2	5	5
11	3	18	22	23	20	25	28	18	18	20	8	8	6	4	1	6	6	10	7	7	6	18	27	15	14
12	18	9	9	7	8	12	17	7	12	16	1	4	13	3	8	20	28	17	14	37	13	9	9	14	13
13	10	4	8	1	7	10	1	3	1	4	2	1	1	3	1	2	10	24	23	20	20	11	7	19	8
14	12	9	13	11	21	27	27	21	23	27	9	3	3	9	8	11	22	27	13	36	5	17	43	73	20
15	60	48	57	40	47	51	51	33	41	45	41	36	37	40	40	32	20	17	3	3	3	5	7	15	32
16	7	0	0	0	0	0	0	0	0	0	0	0	0	0	0	0	1	1	1	1	0	0	2	0	1
17	0	1	0	1	1	1	0	3	2	0	0	1	3	2	3	2	1	4	3	0	4	3	5	3	2
18	4	3	3	8	9	28	31	19	15	10	15	8	11	16	11	8	3	13	8	18	18	15	28	35	14
19	38	24	13	16	20	31	36	44	56	39	47	85	62	39	57	61	51	75	105	66	48	32	69	111	51
20	90	80	31	19	16	14	14	17	20	36	36	28	28	26	29	29	28	32	31	30	30	27	29	28	31
21	24	19	20	20	15	17	21	21	21	33	30	28	33	37	33	28	23	27	34	33	36	54	60	50	30
22	42	29	20	13	14	22	29	30	28	32	29	23	20	30	14	15	9	7	7	7	12	31	31	49	23
23	21	31	24	20	21	24	23	27	23	39	40	31	18	8	8	7	5	6	5	6	5	2	2	14	17
24	11	M	16	15	12	24	33	41	36	56	39	27	19	15	17	13	11	11	9	9	6	4	3	2	19
25	2	6	11	10	9	5	17	49	27	15	13	11	10	10	11	11	7	6	4	5	3	1	0	1	10
26	1	1	2	4	6	15	26	35	18	30	30	17	D	D	5	3	6	4	6	4	0	7	2	1	10
27	2	0	1	0	0	0	9	25	16	15	5	4	11	12	14	5	4	4	0	2	5	3	3	4	6
28	3	3	3	6	6	14	27	22	16	20	13	5	4	4	6	3	6	2	4	2	3	6	2	0	8
29	1	0	0	1	1	6	33	25	8	6	4	6	12	15	15	9	14	8	2	3	4	2	19	14	9
30	10	13	14	24	21	34	45	43	45	44	32	23	22	23	34	25	21	12	9	7	53	36	57	49	29

MONTHLY STATISTICS:

GEOM		ARITH ----- PERCENTILES -----							----- RANGE -----					STN GEOM	PERCENT	NO. OF TIMES
MEAN	MEDIAN	MEAN	50	90	95	98	99	1-HR	24-HR	DEVIATION	VALID DATA	ABOVE OBJECTIVE				
												1-HR				
10	10	16	10	37	48	61	79	0	-	151	1	-	51	3	99	0

NOTES: 1. FLAGS FOR INVALID DATA :
D: DYNAMIC CALIBRATION
T: TELEMETRY/DATALOGGR FAULT
M: MAINTENANCE OR ANALYZER FAULT
P: POWER FAILURE

Appendix C Summary Results on Water Quality Monitoring

LAMMA POWER STATION FGD WASTEWATER TREATMENT PLANT EFFLUENT DISCHARGE TO ASH LAGOON SUSPENDED SOLIDS AND PH

Period : July – September 2014

Week Ending	No. of Samples	Suspended Solids, mg/L			pH		
		Maximum	Minimum	Average	Maximum	Minimum	Average
05/07/14	5*	16	11	13	8.2	8.1	8.1
12/07/14	7	15	11	13	8.3	8.1	8.2
19/07/14	7	16	10	13	8.3	8.0	8.1
26/07/14	7	15	11	13	8.4	8.1	8.2
02/08/14	4*	16	11	14	8.4	8.1	8.2
09/08/14	6*	16	12	14	8.2	8.1	8.2
16/08/14	5*	14	11	12	8.2	8.1	8.1
23/08/14	7	16	11	13	8.3	8.1	8.2
30/08/14	5*	15	12	14	8.3	8.1	8.2
06/09/14	5*	14	11	12	8.2	8.1	8.1
13/09/14	5*	14	11	12	8.2	8.1	8.1
20/09/14	3*	19	15	17	8.2	8.1	8.1
27/09/14	2*	21	16	19	8.2	8.1	8.2

Remark :

* - No sampling for the remaining day(s) of the week / no sampling due to no discharge

LAMMA POWER STATION
FGD WASTEWATER TREATMENT PLANT
EFFLUENT DISCHARGE TO ASH LAGOON
TRACE METAL, TOTAL PHOSPHORUS
AND TOTAL NITROGEN ANALYSIS

Period : July – September 2014

Sampling date		16/7/2014	6/8/2014	4/9/2014
Barium,	ug/L	189	168	<150
Mercury,	ug/L	<0.5	<0.5	<0.5
Cadmium,	ug/L	<1	<1	<1
Iron,	ug/L	<400	<400	<400
Total Phosphorous,	mg/L	<0.8	0.8	<0.8
Total Nitrogen,	mg/L	114	132	148
Cyanide,	mg/L	<0.01	<0.01	<0.01

Remark:

According to the WPCO Ash Lagoon Discharge Licence, contents at exact levels of trace metals below 1/10 th of the WPCO Licence permitted limits will not be reported. When the concentration of a metal exceeds 1/10 th of the limit, the exact value of the metal concentration will be reported.

Appendix D Summary of EMIS

EM&A Log Ref.	Mitigation Measures	Implementation Status
	GENERAL	
A1	No other process, except the Wet Limestone-Gypsum process used in the FGD plants of the coal-fired Units L6, L7 and L8 within the Lamma Power Station, shall be used in the FGD plants for the projects unless otherwise agreed by EPD.	Complied
	WATER QUALITY	
B1	All wastewater arising from the operation of the projects shall be collected and directed to the existing wastewater treatment plant within the Lamma Power Station for treatment.	Complied
B2	The operational plant effluent from the FGD plants should be reused as much as possible in order to minimise discharge to the WWTP.	Complied
B3	Maintenance of the WWTP should be performed regularly to ensure the effluent from the WWTP would not exceed the current requirements stipulated in the WPCO licence for Ash Lagoon.	Complied
	WASTE	
C1	No gypsum or sludge arising from the operation of the projects shall be disposed of anywhere. All gypsum and sludge shall be collected and reused.	Complied
	NOISE	
D1	Equipments including the Absorber Recirculation Pump, Oxidation Air Blower, Booster Fan and Booster Fan Motor of the FGD plants shall be acoustically insulated and the Gas-Gas Heater (untreated side) of the FGD plants shall be provided with reinforced lagging to reduce the noise impact.	Complied`