

香港電燈有限公司
The Hongkong Electric Co., Ltd.



**Lamma Power Station
Units L2, L4 & L5 Flue Gas Desulphurization
Plants Retrofit**

Operational Phase

Quarterly Environmental Monitoring & Audit Report

October – December 2015

TABLE OF CONTENT

EXECUTIVE SUMMARY

1.	INTRODUCTION.....	1
1.1	Background	1
1.2	Project Organisation	2
1.3	Plant Availability during the Reporting Period	2
1.4	Malfunction/Outage Records of Pollution Control Equipment	2
1.5	Summary of EM&A Requirements	3
2.	AIR QUALITY.....	12
2.1	Monitoring Requirements	12
2.2	Summary of Results and Observations	12
3.	WATER QUALITY	13
3.1	Monitoring Requirements	13
3.2	Summary of Results and Observations	13
4.	ENVIRONMENTAL AUDIT	14
4.1	Review of Environmental Monitoring Procedures	14
4.2	Assessment of Environmental Monitoring Results	14
4.3	Status of Environmental Licensing and Permitting	16
4.4	Implementation Status of Environmental Mitigation Measures	16
4.5	Implementation Status of Event/Action Plan	16
4.6	Implementation Status of Environmental Complaint Handling Procedures	16
5.	FUTURE KEY ISSUES.....	18
5.1	Outage Plan for the coming 3 months	18
5.2	Key issues for the coming 3 months	18
6.	CONCLUSION	19

LIST OF TABLES

Table 2.1	Air Quality Monitoring Parameters and Frequency
Table 3.1	Water Quality Monitoring Parameters and Frequencies
Table 4.1	Summary of Action/Limit Level Exceedances on Monitoring Parameters
Table 4.2	Amount of Gypsum and Sludge Collected for Reuse by Contractor
Table 4.3	Summary of Environmental Licensing and Permit Status
Table 4.4	Environmental Complaints Received
Table 4.5	Outstanding Environmental Complaints Carried Over

LIST OF FIGURES

- Figure 1.1a Location of New Facilities for L4 & L5 FGD Plant
- Figure 1.1b Location of New Facilities for L2 FGD Plant
- Figure 1.2a General Arrangement of L4 & L5 FGD Plant
- Figure 1.2b General Arrangement of L2 FGD Plant
- Figure 1.3 Schematic Diagram of L2, L4 & L5 FGD Plant
- Figure 1.4 Simplified Schematic Diagram of FGD Wastewater Treatment Plant
- Figure 1.5 Organization Chart at Operational Phase

APPENDIX

- Appendix A Event/Action Plans in Response to Exceedance of AL Levels
- Appendix B Air Quality Monitoring Results
- Appendix C Summary Results on Water Quality Monitoring
- Appendix D Summary of EMIS

EXECUTIVE SUMMARY

This is the quarterly Environmental Monitoring and Audit (EM&A) report for the Projects “Lamma Power Station Units L4 & L5 Flue Gas Desulphurization Plant Retrofit” and “Lamma Power Station Unit L2 Flue Gas Desulphurization Plant Retrofit” prepared by the Environmental Team (ET). This report presents the results of impact monitoring on air and water quality and environmental audit for the operation of the said projects in the period from October to December 2015.

Environmental monitoring for air quality and water quality were carried out for the purpose of this EM&A program as well as for fulfilling the requirements stipulated in the relevant licences. The results were checked against the established Action/Limit (AL) levels. The implementation status of the environmental mitigation measures, Event/Action Plan and environmental complaint handling procedures were also checked.

Plant Availability

Units L2, L4 and L5 were out of service during the following period:

Unit	Period	Remark
L2	29/09/2015 19:25 to 31/12/2015 23:59	Unit Life Extension
L4	14/11/2015 14:52 to 28/11/2015 17:11	Unit Overhaul
L4	12/12/2015 22:19 to 13/12/2015 03:09	Defect Rectification
L5	12/10/2015 23:14 to 27/10/2015 06:22	Unit Overhaul
L5	13/11/2015 19:50 to 14/11/2015 09:41	Defect Rectification

Malfunction/Outage Records of Pollution Control Equipment

Major outages of the Pollution Control Equipment during the reporting period are listed below:

Equipment	Period	Cause	Actions Taken
L4 FGD	19:07 on 12/11/2015 to 10:50 on 05/12/2015	FGD plant was bypassed for Absorber, Mist Eliminator & Gas-Gas Heater washing and defect rectification.	EPD was informed by letter dated 09/12/2015
L5 FGD	06:22 on 27/10/2015 to 19:53 on 02/11/2015	FGD plant was bypassed for miscellaneous defect rectification.	EPD was informed by letter dated 04/11/2015

For other minor outages, please refer to section 1.4 of the report.

Environmental Monitoring Works

Environmental monitoring works were performed during the operation of Units L2, L4 and L5 FGD Plants in the reporting period.

Air Quality

No exceedance of Action and Limit levels for air quality were recorded in the reporting period.

Water Quality

No exceedance of Action and Limit levels for water quality were recorded in the reporting period.

Environmental Licensing and Permitting

Description	Permit / Licence No.	Valid Period		Issued To	Date of Issuance
		From	To		
Environmental Permit for L4/5 FGD plants retrofit project	EP-248/2006	25/04/2006	-	HK Electric	25/04/2006
Environmental Permit for Unit L2 FGD plant retrofit project	EP-287/2007	02/10/2007	-	HK Electric	02/10/2007
Specified Process Licence issued under APCO	L-7-002(10)	01/01/2015	31/12/2016	HK Electric	23/12/2014
WPCO discharge licence for Ash Lagoon	WT00011131-2011	15/12/2011	31/12/2016	HK Electric	15/12/2011

Implementation Status of Environmental Mitigation Measures

Environmental mitigation measures were implemented in the reporting period.

Environmental Complaints

One environmental concern against the operation of Lamma Power Station was received during the reporting period, which was found not related to the power station after investigation.

Future key issues

Key issues to be considered in the coming months include:

Air Impact

- To continuously carry out the air quality monitoring for Units L2, L4 and L5.

Water Impact

- To continuously carry out the water quality monitoring for FGD WWT plant.

Concluding Remarks

The environmental performance of the projects was generally satisfactory.

1. INTRODUCTION

The Environmental Team (hereinafter called the “ET”) was formed within The Hongkong Electric Co. Ltd (HK Electric) to undertake Environmental Monitoring and Audit for the “Operation of Lamma Power Station Units L4 & L5 Flue Gas Desulphurization Plant Retrofit Project” under the requirements of Clause 2.18 of Environmental Permit (EP) No. EP-248/2006 and “Operation of Lamma Power Station Unit L2 Flue Gas Desulphurization Plant Retrofit Project” under the requirements of Clause 2.10 of Environmental Permit (EP) No. EP-287/2007.

This report summarizes the environmental monitoring and audit work for the said Projects for the period from October to December 2015.

1.1 Background

The Projects involves retrofitting the three existing coal-fired generating Units L2, L4 and L5 of Lamma Power Station with Flue Gas Desulphurisation (FGD) plants for reducing sulphur dioxide emissions in support of Government policy to improve the air quality of the Pearl River Delta.

The Projects include the installation and operation of FGD plants with flue gas desulphurization efficiency of 90% for the three coal-fired Units L2, L4 & L5 to reduce the overall SO₂ emissions from Lamma Power Station. The process adopted for the FGD plants is “Wet Limestone-Gypsum”, a technology which has already been used in, and proved effective and reliable for the existing coal-fired units L6, L7 & L8. The flue gas from the boiler is directed to the FGD absorber inside which removal of SO₂ is take place by reaction with limestone slurry. After passing through the absorber, the treated flue gas is heated up by a gas-gas heater to over 80°C at boiler rated capacity and directed back to the existing chimney for discharge to the atmosphere. Figure 1.1a, Figure 1.1b, Figure 1.2a, Figure 1.2b and Figure 1.3 show the location and schematic of the FGD plants.

Wastewater filtrated from the reacted limestone slurry, i.e. gypsum slurry, is produced and it is directed to the existing FGD wastewater treatment plant (WWTP). The FGD WWTP is designed to treat the effluent from FGD plants by alkalization, precipitation and neutralization processes. The schematic diagram of the FGD WWTP is illustrated in Figure 1.4.

The additional equipment for the FGD Plants retrofit projects for Units L2, L4 and L5 includes:

- Three sets of FGD absorbers and associated ductworks
- Three sets of booster fans
- Three sets of gas-gas heaters
- Two FGD Switchgear and Equipment Buildings
- Gypsum dewatering system comprising two sets of hydrocyclones and belt filters

1.2 Project Organisation

The management structure to oversee the Projects includes the following:

- Environmental Protection Department (The Authority);
- General Manager (Corporate Development) (The official contact person between HK Electric and EPD);
- Environmental Team Leader (ET Leader);
- Environmental Team (ET).

The organization chart for the Operation EM&A programme is shown in Figure 1.5.

1.3 Plant Availability during the Reporting Period

Units L2, L4 and L5 were out of service during the following period:

Unit	Period	Remark
L2	29/09/2015 19:25 to 31/12/2015 23:59	Unit Life Extension
L4	14/11/2015 14:52 to 28/11/2015 17:11	Unit Overhaul
L4	12/12/2015 22:19 to 13/12/2015 03:09	Defect Rectification
L5	12/10/2015 23:14 to 27/10/2015 06:22	Unit Overhaul
L5	13/11/2015 19:50 to 14/11/2015 09:41	Defect Rectification

1.4 Malfunction/Outage Records of Pollution Control Equipment

Equipment	Period	Cause	Actions Taken
L4 FGD	10/10/2015 02:15 to 02:25	Routine damper exercise	EPD was informed on 13/10/2015
L4 FGD	17/10/2015 01:20 to 01:23	Routine damper exercise	EPD was informed on 20/10/2015
L4 FGD	24/10/2015 02:19 to 02:22	Routine damper exercise	EPD was informed on 27/10/2015
L4 FGD	31/10/2015 02:18 to 02:31	Routine damper exercise	EPD was informed on 02/11/2015

Equipment	Period	Cause	Actions Taken
L4 FGD	01/11/2015 19:55 to 20:06	FGD plant was bypassed due to operation of booster fan stalling alarm.	EPD was informed by letter dated 04/11/2015
L4 FGD	04/11/2015 14:14 to 14:30	FGD plant was bypassed due to operation of booster fan stalling alarm.	EPD was informed by letter dated 05/11/2015
L4 FGD	09/11/2015 21:11 to 21:17	FGD plant was bypassed due to operation of booster fan stalling alarm.	EPD was informed by letter dated 12/11/2015
L4 FGD	11/11/2015 20:17 to 20:35	FGD plant was bypassed due to operation of booster fan stalling alarm.	EPD was informed by letter dated 12/11/2015
L4 FGD	19:07 on 12/11/2015 to 10:50 on 05/12/2015	FGD plant was bypassed for Absorber, Mist Eliminator & Gas-Gas Heater washing and defect rectification.	EPD was informed by letter dated 09/12/2015
L5 FGD	03/10/2015 01:58 to 02:00	Routine damper exercise	EPD was informed on 07/10/2015
L5 FGD	10/10/2015 04:10 to 04:22	Routine damper exercise	EPD was informed on 13/10/2015
L5 FGD	06:22 on 27/10/2015 to 19:53 on 02/11/2015	FGD plant was bypassed for miscellaneous defect rectification.	EPD was informed by letter dated 04/11/2015
L5 FGD	21/11/2015 03:12 to 03:15	Routine damper exercise	EPD was informed on 25/11/2015
L5 FGD	28/11/2015 03:01 to 03:05	Routine damper exercise	EPD was informed on 02/12/2015
L5 FGD	05/12/2015 02:23 to 02:35	Routine damper exercise	EPD was informed on 09/12/2015
L5 FGD	12/12/2015 03:04 to 03:15	Routine damper exercise	EPD was informed on 16/12/2015
L5 FGD	19/12/2015 01:54 to 01:57	Routine damper exercise	EPD was informed on 23/12/2015
L5 FGD	26/12/2015 01:34 to 01:46	Routine damper exercise	EPD was informed on 29/12/2015

1.5 Summary of EM&A Requirements

Environmental Monitoring and Audit (EM&A) requirements have been discussed in the Environmental Impact Assessment (EIA) Report/ Project Profile for the Projects. The assessment results indicate that environmental monitoring works required for the EM&A programmes of these Projects are already in place or would be implemented under Lamma Power Station Extension Environmental Permit or environmental licenses

for the operation of the existing Lamma Power Station. Such monitoring works are considered adequate for the Projects and no additional EM&A activities are required. Hence, environmental monitoring for air quality and water quality are carried out for the purpose of this EM&A program as well as for fulfilling the requirements stipulated in the relevant licences.

The EM&A monitoring work for air and water quality are described in Section 2 and Section 3 respectively.

The following environmental audits are summarized in Section 4 of the report:

- Environmental monitoring results;
- The status of environmental licensing and permits for the Projects;
- The implementation status of environmental protection and pollution control / mitigation measures.

The future key issues for the Projects will be reported in Section 5 of this report.

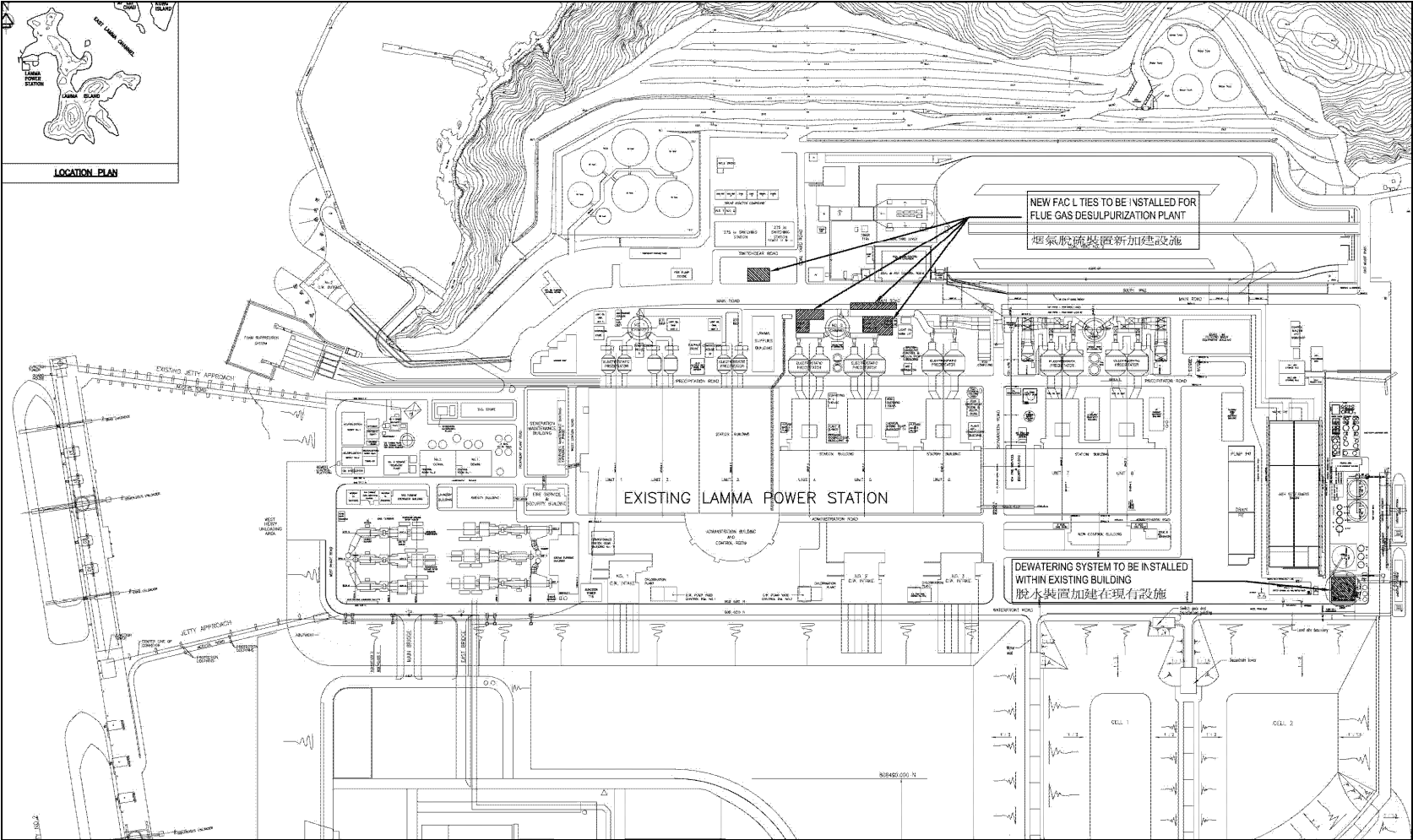


Figure 1.1a Location of New Facilities for L4 & L5 FGD Plants

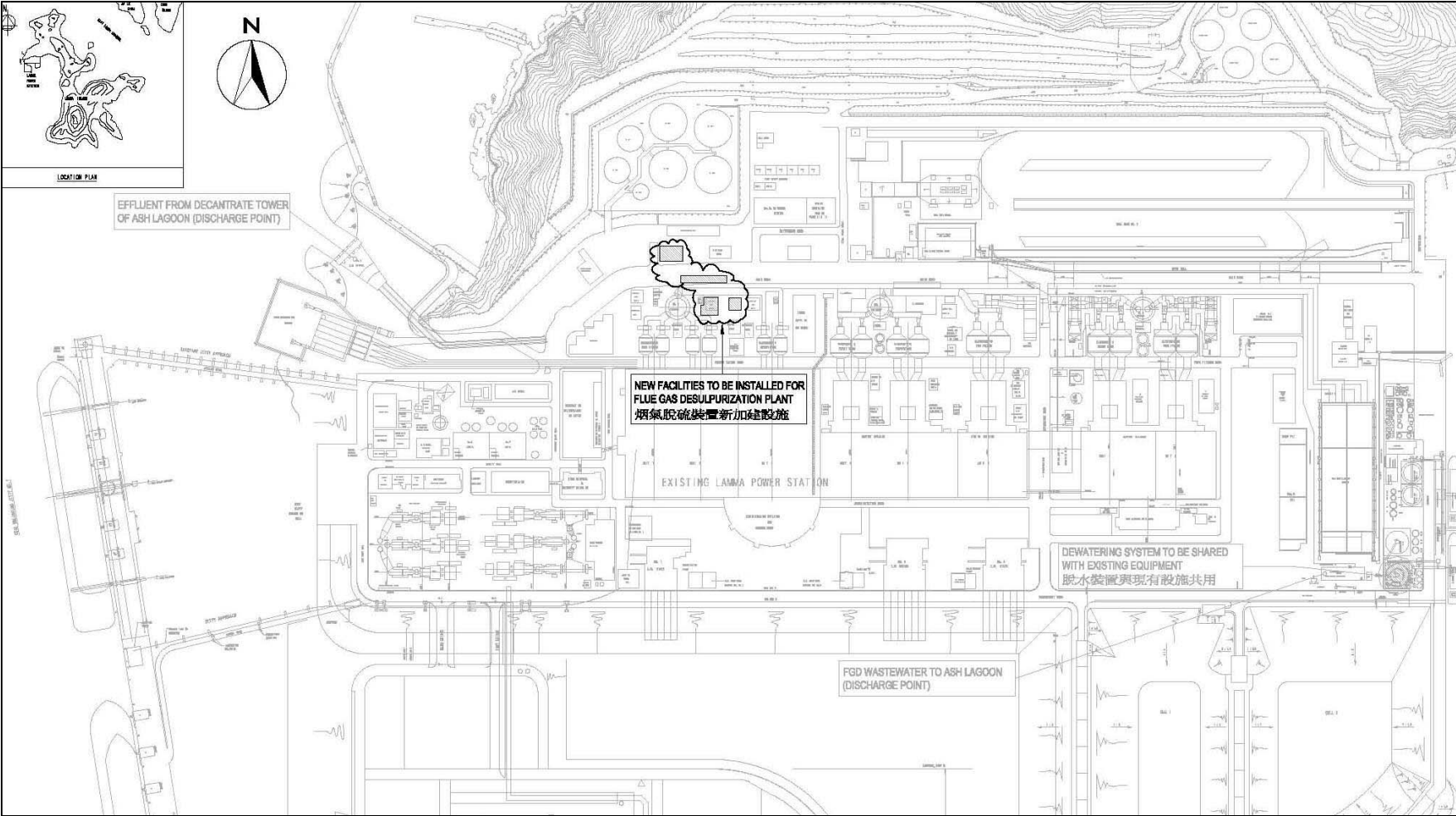


Figure 1.1b Location of New Facilities for L2 FGD Plant

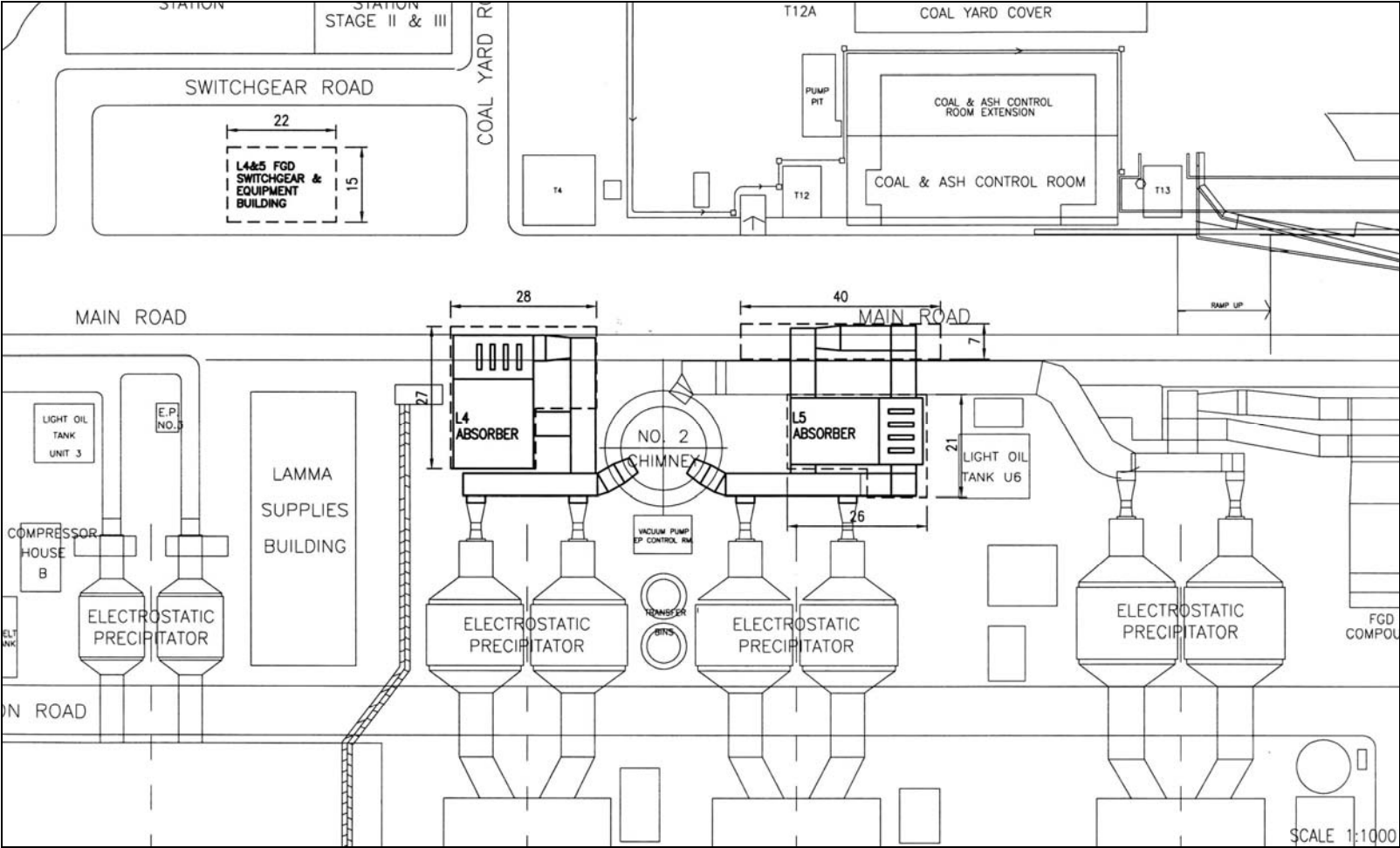


Figure 1.2a General Arrangement of L4 & L5 FGD Plants

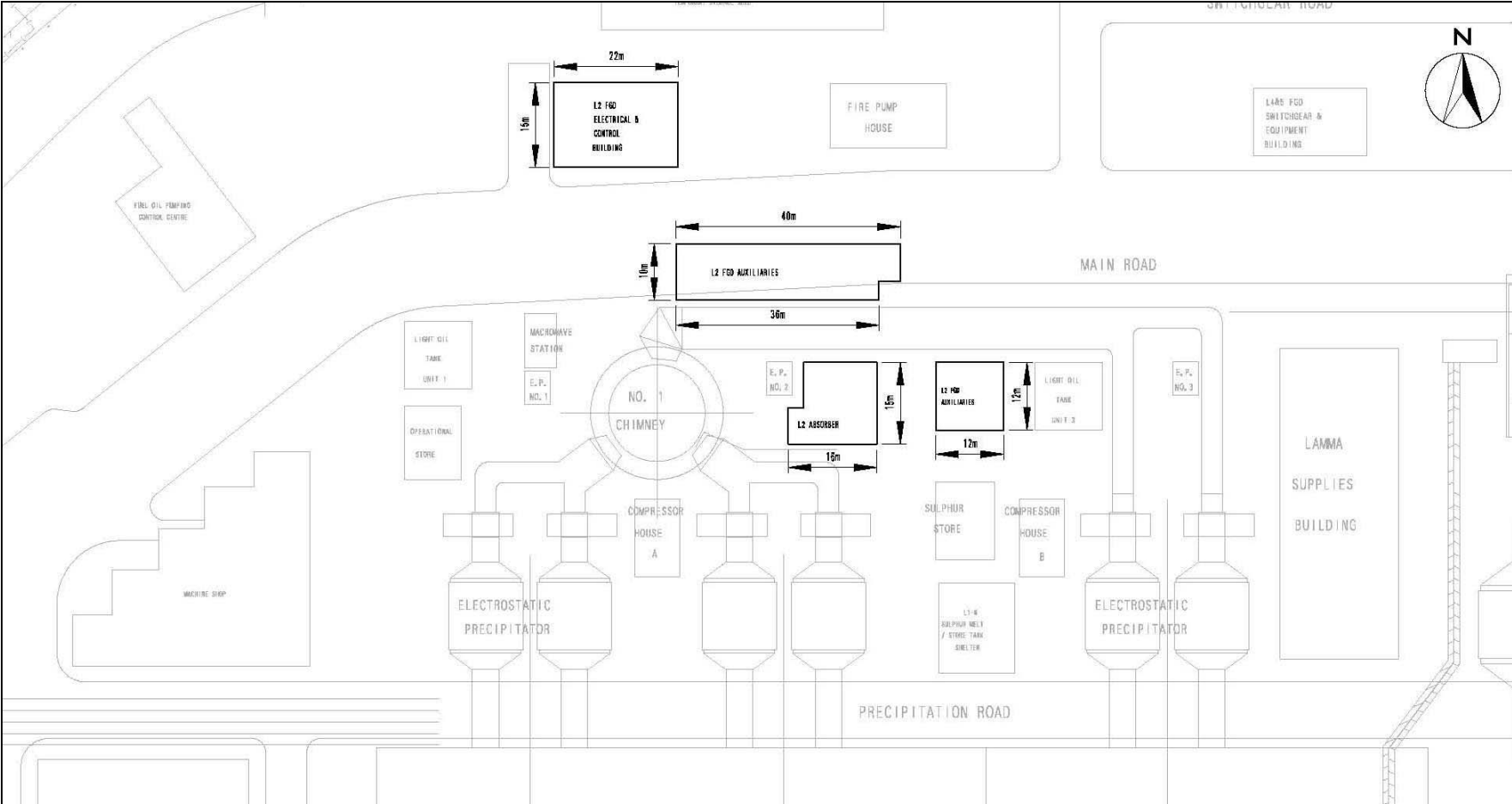


Figure 1.2b General Arrangement of L2 FGD Plant

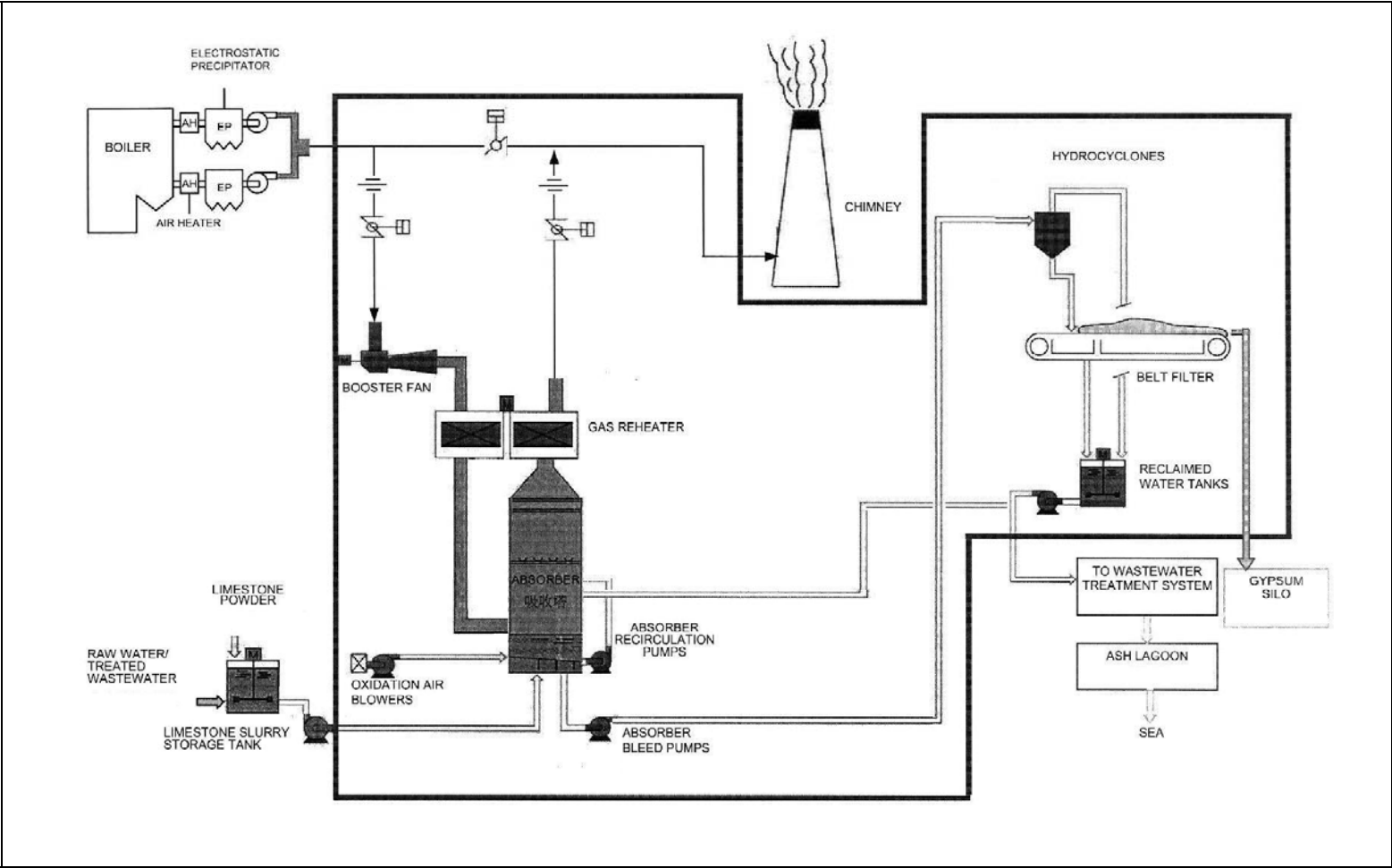


Figure 1.3 Schematic Diagram of the L2, L4 & L5 FGD Plant

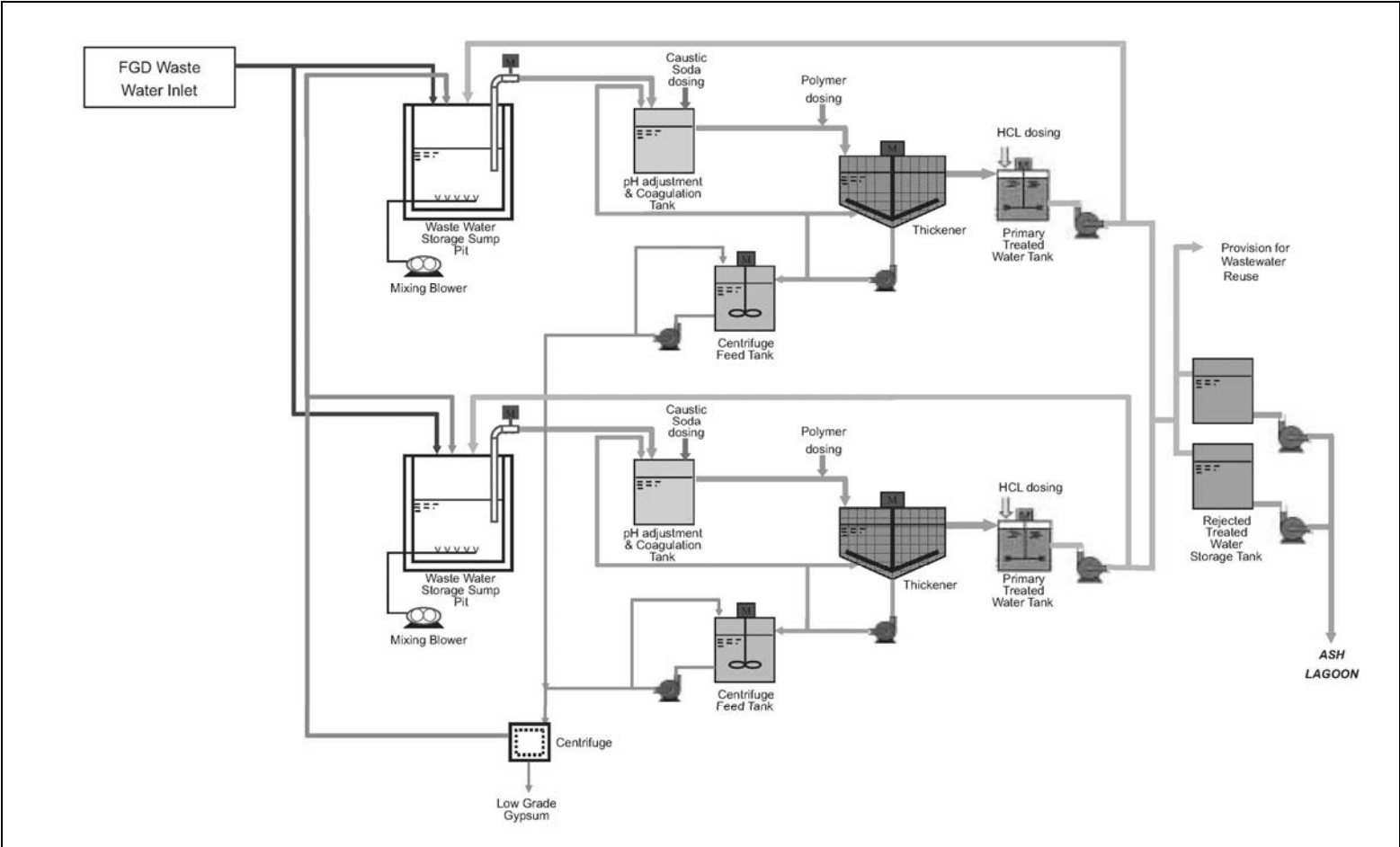


Figure 1.4 Simplified Schematic Diagram of FGD Wastewater Treatment Plant

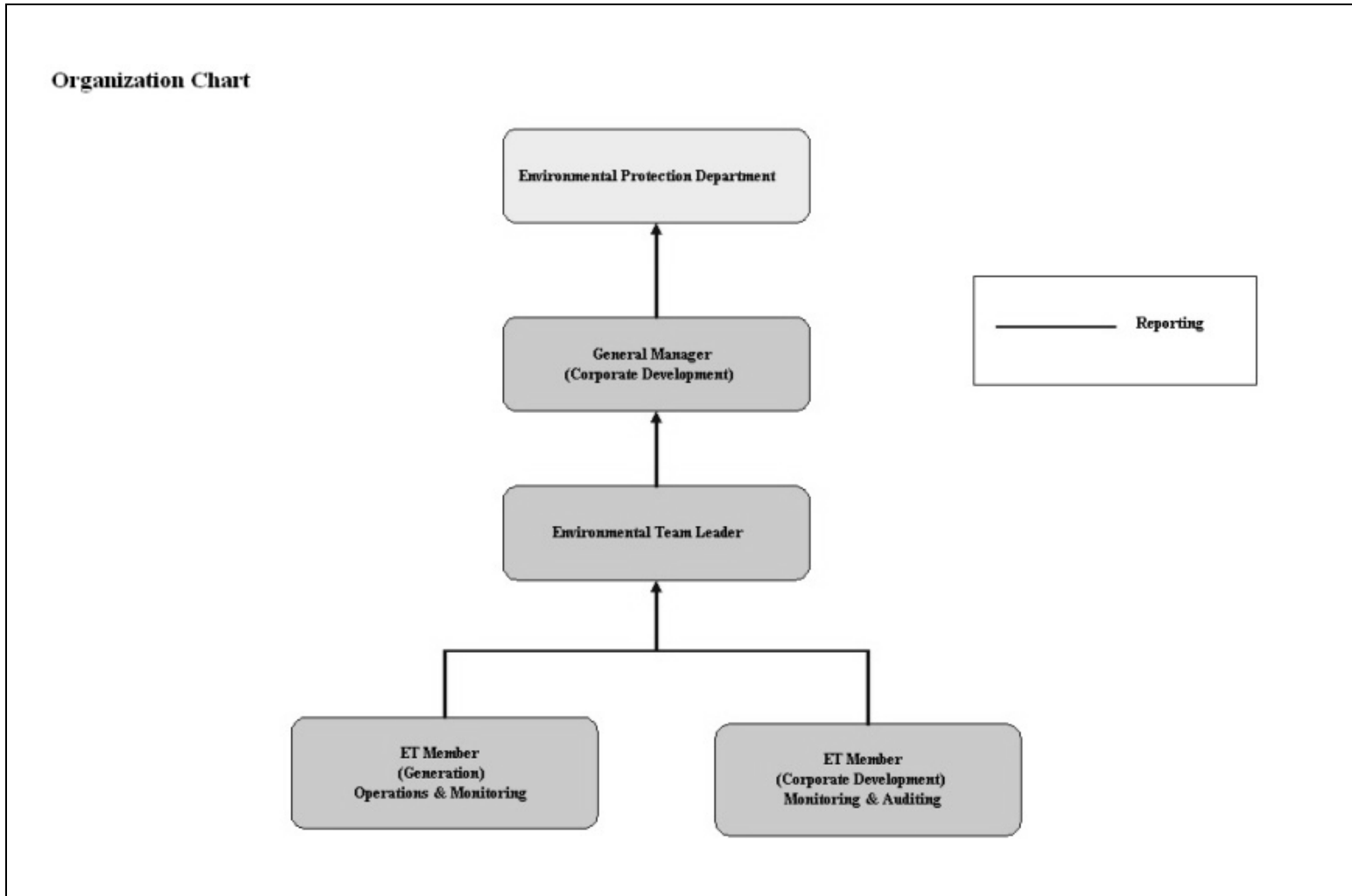


Figure 1.5 Organization Structure at Operational Phase of the Projects

2. AIR QUALITY

2.1 Monitoring Requirements

Since the Projects will bring a general air quality improvement, no additional EM&A activities are considered required, besides those already in place, such as those required by specified process licenses for the operation of the existing Lamma Power Station. In accordance with the requirements stipulated in the Specified Processes Licence issued under Air Pollution Control Ordinance, various operation parameters as stated in Table 2.1 were monitored and checked against the Action/Limit Levels shown in Appendix A.

Table 2.1 Air Quality Monitoring Parameters and Frequency

Sources of Emission	Parameter	Frequency
Steam boilers L2, L4 & L5	Particulate	Once / year
	Particulate (Opacity)	Continuous
	SO ₂	Continuous
	NO _x expressed as NO ₂ (For L4 and L5 only)	Continuous
Fugitive Dust (Coal, PFA, Limestone, gypsum)	Total Suspended Particulate	Once every six days
Chimney emissions	Ambient air	Continuous at existing ambient air monitoring stations
	SO ₂	
	NO ₂	

2.2 Summary of Results and Observations

Monitoring of various parameters as listed in Table 2.1 above was conducted during the operation of Units L2, L4 and L5 in the reporting period. Ambient air monitoring at Chung Hom Kok was temporary suspended since 1/5/2015 for the replacement of the aged shelter of the station. Site installation work was completed in November 2015 and the station resumed its operation on 1 December 2015. A summary of monitoring data is shown in Appendix B.

No Action/Limit Level exceedance was recorded in the reporting period.

3. WATER QUALITY

3.1 Monitoring Requirements

According to the EIA Report/ Project Profile for the Projects, the current monitoring programme for the Lamma Power Station can cover the Projects and no additional EM&A measures are required besides those already in place. Hence, the EM&A work on water quality should strictly follow the relevant monitoring requirements stipulated in the discharge licence for Ash Lagoon issued under the Water Pollution Control Ordinance (WPCO).

Water quality monitoring was carried out for FGD Waste Water Treatment Plant (WWTP) in the reporting period. The parameters stated in Table 3.1 were monitored and checked against the Action/Limit Levels as given in Appendix A.

Table 3.1 Water Quality Monitoring Parameters and Frequencies

Item	Parameters	Frequencies
1	pH	Daily
2	Suspended Solids	Daily
3	Iron	Monthly
4	Barium	Monthly
5	Mercury	Monthly
6	Cadmium	Monthly
7	Cyanide	Monthly
8	Total Phosphorus	Monthly
9	Total Nitrogen	Monthly

3.2 Summary of Results and Observations

Monitoring of various parameters as listed in Table 3.1 above was carried out during the discharge of the WWTP in the reporting period. A summary of the data is shown in Appendix C.

The data recorded for the monitoring parameters were all below their corresponding Action/Limit Levels. No Action/Limit level exceedance was recorded in the reporting period. The effluent quality was generally satisfactory.

4. ENVIRONMENTAL AUDIT

4.1 Review of Environmental Monitoring Procedures

The environmental monitoring procedures were regularly reviewed by the Environmental Team. No modification to the existing monitoring procedures was recommended.

4.2 Assessment of Environmental Monitoring Results

Monitoring results for Air Quality and Water Quality

The environmental monitoring results for air quality and water quality are presented in Sections 2 and 3 respectively are summarized in Table 4.1.

Table 4.1 Summary of Action/Limit Level Exceedances on Monitoring Parameters

Item	Parameter Monitored	Monitoring Period	No. of Exceedances In		Event/Action Plan Implementation Status and Results
			Action Level	Limit Level	
Air					
1	Annual analysis of dust particulate emission rates at chimney stacks.	01/10/15-31/12/15	N.A.	0	Stack PM sampling tests for L2 and L5 were conducted in the reporting period.
2	Continuous monitoring of opacity, NO _x , SO ₂ and CO ₂ in the flue gas at the chimney stacks	01/10/15-31/12/15	0	0	
3	TSP monitoring at Lamma Power Station Boundary (ie East Gate and Reservoir).	01/10/15-31/12/15	0	0	
4	Ambient SO ₂ & NO _x monitoring at the Peak, Queen Mary Hospital, Victoria Road, Chung Hom Kok, Ap Lei Chau and	01/10/15-31/12/15	0	0	

Item	Parameter Monitored	Monitoring Period	No. of Exceedances In		Event/Action Plan Implementation Status and Results
			Action Level	Limit Level	
	Cheung Chau.				
Water					
1	pH in WWTP Effluent	01/10/15-31/12/15	0	0	
2	Suspended Solids in WWTP Effluent	01/10/15-31/12/15	0	0	
3	Iron in WWTP Effluent	01/10/15-31/12/15	0	0	
4	Barium in WWTP Effluent	01/10/15-31/12/15	0	0	
5	Mercury in WWTP Effluent	01/10/15-31/12/15	0	0	
6	Cadmium in WWTP Effluent	01/10/15-31/12/15	0	0	
7	Cyanide in WWTP Effluent	01/10/15-31/12/15	0	0	
8	Total Phosphorus in WWTP Effluent	01/10/15-31/12/15	0	0	
9	Total Nitrogen in WWTP Effluent	01/10/15-31/12/15	0	0	

Waste Management Records

The quantity of FGD gypsum and sludge collected for reuse by contractor in the reporting period are shown in Table 4.2.

Table 4.2 Amount of Gypsum and Sludge Collected for Reuse by Contractor

Period	Amount of Gypsum Collected	Amount of Sludge Collected
October 2015	3020.0 MT	0 MT
November 2015	6450.8 MT	0 MT
December 2015	5943.1 MT	0 MT

4.3 Status of Environmental Licensing and Permitting

All permits/licenses obtained as of December 2015 are summarised in Table 4.3.

Table 4.3 Summary of Environmental Licensing and Permit Status

Description	Permit / Licence No.	Valid Period		Status
		From	To	
Environmental Permit for Units L4/5 FGD Plants Retrofit	EP-248/2006	25/04/2006	-	Valid
Environmental Permit for Unit L2 FGD Plant Retrofit	EP-287/2007	02/10/2007	-	Valid
Specified Process Licence issued under APCO	L-7-002(10)	01/01/2015	31/12/2016	Valid
WPCO discharge licence for Ash Lagoon	WT00011131-2011	15/12/2011	31/12/2016	Valid

4.4 Implementation Status of Environmental Mitigation Measures

Mitigation measures detailed in the EIA Report and EP are required to be implemented. A summary of the Environmental Mitigation Implementation Schedule (EMIS) is presented in Appendix D.

4.5 Implementation Status of Event/Action Plan

A list of specific actions in the event of exceedances of the various threshold levels for specific emission and discharge sources is given in Appendix A.

As no Action/Limit level exceedance was recorded, no action has been devised.

4.6 Implementation Status of Environmental Complaint Handling Procedures

During the reporting period, there was one (1) environmental concern against the operation of Lamma Power Station as summarized in Table 4.4.

Table 4.4 Environmental Complaint(s) Received

Case Reference / Date, Time Received / Date, Time Concerned	Descriptions / Actions Taken	Conclusion / Status
<p><i>Reference:</i> EC160300204</p> <p><i>Received:</i> 18/11/2015 (12:53 p.m.)</p> <p><i>Concerned:</i> “Since a month ago”</p>	<p>A District Councilor (Ms. Yu) referred to HK Electric an enquiry from a lady living at Yung Shue Wan about some yellow-brown spots “recently” found at her house. The lady suspected that the spots were related to the chimney emissions of Lamma P/S and worried if there would be any health impact. As arranged through Ms. Yu’s office, a joint visit was paid to the concerned resident by representatives from Ms. Yu’s office and HK Electric in the morning of 08/01/2016. Samples of the alleged stains were collected, which after analysis, were identified to be pollen grains. HK Electric advised Ms. Yu’s via email on 12/02/2016 that the stains was found not related to Lamma P/S, and also re-assured Ms. Yu about the P/S’s environmental protection and monitoring work. There was no further enquiry.</p>	<p>The alleged stains were found not related to the P/S. Case closed.</p>

Table 4.5 Outstanding Environmental Complaint(s) Carried Over

Case Reference / Date, Time Received / Date, Time Concerned	Descriptions / Actions Taken	Conclusion / Status
Nil	N/A	N/A

5. FUTURE KEY ISSUES

5.1 Outage Plan for the coming 3 months

No major outage plan for the coming three months.

5.2 Key issues for the coming 3 months

Key issues to be considered in the coming 3 months include:

Air Impact

- To continuously carry out the air quality monitoring for Units L2, L4 and L5.

Water Impact

- To continuously carry out the water quality monitoring for FGD Waste Water Treatment Plant.

6. CONCLUSION

Environmental monitoring was performed as required in the reporting period from October to December 2015. All monitoring results were checked and reviewed.

No Action/Limit level exceedance on air quality parameters were recorded in the reporting period.

No Action/Limit level exceedance on water quality parameters were recorded in the reporting period.

Environmental mitigation measures recommended in the EIA Report and EP were implemented in the reporting period. One environmental concern against the operation of Lamma Power Station was received during the reporting period, which was found not related to the power station after investigation. No prosecution was received for the Projects in the reporting period.

The environmental performance of the Projects was generally satisfactory.

Appendix A Event/Action Plans in Response to Exceedance of AL Levels

A.1 Air

Source of Emissions	Parameters to be Monitored	Frequency	Concentration Not to Be Exceeded	Action	Limit	Proposed Action
Steam boilers L2, L4 and L5	Particulate Particulate (Opacity) SO ₂ NO _x expressed as NO ₂ (For L4 and L5 only)	once/year continuous continuous continuous	50 mg/Nm ³ 40% (bihourly) 200 mg/Nm ³ (1h) 615 mg/Nm ³ (1h)	- 35 190 585	50 40 200 615	ET Leader informs Generation Division at action level. Maintenance initiated. Temporary load shift until pollution control equipment repaired and reinstated. Report to EPD.
Fugitive dust (Coal, PFA, limestone, gypsum)	TSP	Once every six days.	260 (µg/m ³) (24 hours)	-	260	Investigation of sources and additional dust suppression to be employed at Limit level. Frequency of monitoring to be increased as necessary.
Chimney emissions	Ambient air SO ₂ NO ₂	Continuous at existing ambient air monitoring stations	800 (µg/m ³) (1h) 300 (µg/m ³) (1h)	- -	800 300	ET to review data on post-hoc basis and check for possible power station contribution.

A.2 Water

Source of Discharges	Parameters to be Monitored	Frequency	Concentration Not to Be Exceeded	Action	Limit	Proposed Action
FGD Wastewater Treatment Plant	pH	Daily	6-9	-	6-9	If pH exceeds limit level, consideration to be given to adjust chemical dosing. ET Leader inform Generation Division and investigation be initiated to identify and remedy cause.
	Suspended Solids	Daily	30 mg/L	25	30	
	Iron	Monthly	4 mg/L	3.6	4	For all other parameters except pH, Generation Division to be informed, frequency of monitoring to be increased, and investigations to be initiated to identify cause and remedy if concentration exceeds action level. If problem persists to exceed the limit level, ET Leader verbally informs EPD and ensures remedial actions implemented.
	Barium	Monthly	1.5 mg/L	1.3	1.5	
	Mercury	Monthly	0.005 mg/L	0.0045	0.005	
	Cadmium	Monthly	0.005 mg/L	0.0045	0.005	
	Cyanide	Monthly	0.1 mg/L	0.09	0.1	
	Total Phosphorus	Monthly	8 mg/L	7.2	8	
	Total Nitrogen	Monthly	400 mg/L	360	400	

B.2 Unit L2, L4 and L5 Stack Monitoring at Lamma Power Station

B.2.1 Monthly Summary of Stack NOx and SO2 for Unit L5

Date	Daily Maximum		
	SO2 concentration (mg/Nm3) #	NOx concentration (mg/Nm3) #	Opacity (%)
1/10/2015	16	387	20
2/10/2015	18	389	22
3/10/2015	28	394	22
4/10/2015	63	420	22
5/10/2015	51	403	22
6/10/2015	24	362	25
7/10/2015	33	391	27
8/10/2015	33	445	26
9/10/2015	13	418	26
10/10/2015	41	411	24
11/10/2015	39	414	22
12/10/2015	39	388	22
13/10/2015	*	*	*
14/10/2015	*	*	*
15/10/2015	*	*	*
16/10/2015	*	*	*
17/10/2015	*	*	*
18/10/2015	*	*	*
19/10/2015	*	*	*
20/10/2015	*	*	*
21/10/2015	*	*	*
22/10/2015	*	*	*
23/10/2015	*	*	*
24/10/2015	*	*	*
25/10/2015	*	*	*
26/10/2015	*	*	*
27/10/2015	FGD Plant Outage	409	21
28/10/2015	FGD Plant Outage	399	19
29/10/2015	FGD Plant Outage	470	19
30/10/2015	FGD Plant Outage	478	19
31/10/2015	FGD Plant Outage	416	18

Date	Daily Maximum		
	SO2 concentration (mg/Nm3) #	NOx concentration (mg/Nm3) #	Opacity (%)
1/11/2015	*	*	*
2/11/2015	77	377	27
3/11/2015	141	441	29
4/11/2015	141	384	27
5/11/2015	75	439	28
6/11/2015	50	438	28
7/11/2015	41	444	28
8/11/2015	40	437	27
9/11/2015	42	433	32
10/11/2015	41	475	28
11/11/2015	65	451	29
12/11/2015	63	411	29
13/11/2015	75	389	30
14/11/2015	90	409	23
15/11/2015	108	438	18
16/11/2015	138	451	28
17/11/2015	136	457	32
18/11/2015	83	426	23
19/11/2015	89	417	22
20/11/2015	104	434	25
21/11/2015	53	358	19
22/11/2015	55	430	16
23/11/2015	27	415	18
24/11/2015	51	417	21
25/11/2015	35	396	22
26/11/2015	50	428	20
27/11/2015	54	449	21
28/11/2015	68	416	20
29/11/2015	71	446	21
30/11/2015	48	402	22

Date	Daily Maximum		
	SO2 concentration (mg/Nm3) [#]	NOx concentration (mg/Nm3) [#]	Opacity (%)
1/12/2015	37	310	21
2/12/2015	36	311	21
3/12/2015	57	410	22
4/12/2015	98	412	21
5/12/2015	96	451	24
6/12/2015	90	432	25
7/12/2015	89	390	24
8/12/2015	85	440	23
9/12/2015	79	473	23
10/12/2015	56	471	22
11/12/2015	37	423	24
12/12/2015	38	391	27
13/12/2015	50	369	26
14/12/2015	51	391	26
15/12/2015	47	480	26
16/12/2015	65	503	28
17/12/2015	67	437	28
18/12/2015	63	435	27
19/12/2015	52	481	23
20/12/2015	63	437	22
21/12/2015	67	401	25
22/12/2015	48	453	27
23/12/2015	54	434	28
24/12/2015	43	455	28
25/12/2015	54	490	22
26/12/2015	49	463	21
27/12/2015	49	468	26
28/12/2015	65	490	25
29/12/2015	97	451	24
30/12/2015	151	475	23
31/12/2015	124	471	26

Note: # - Hourly average value. Expressed as at 0°C, 101.325kPa, dry and corrected to 12% CO₂ condition.

* - Unit L5 was not on load.

B.2.2 Monthly Summary of Stack NOx and SO2 for Unit L4

Date	Daily Maximum		
	SO2 concentration (mg/Nm3) #	NOx concentration (mg/Nm3) #	Opacity (%)
1/10/2015	25	377	18
2/10/2015	38	418	19
3/10/2015	45	444	21
4/10/2015	48	402	23
5/10/2015	47	422	19
6/10/2015	20	392	26
7/10/2015	26	411	28
8/10/2015	38	441	26
9/10/2015	43	476	20
10/10/2015	47	458	22
11/10/2015	34	439	16
12/10/2015	45	455	21
13/10/2015	21	476	25
14/10/2015	20	454	25
15/10/2015	43	459	26
16/10/2015	28	415	26
17/10/2015	26	396	26
18/10/2015	29	416	19
19/10/2015	19	461	17
20/10/2015	35	470	23
21/10/2015	22	465	16
22/10/2015	38	417	23
23/10/2015	56	401	27
24/10/2015	42	483	29
25/10/2015	26	480	23
26/10/2015	48	455	31
27/10/2015	73	424	26
28/10/2015	59	473	27
29/10/2015	79	466	25
30/10/2015	130	450	28
31/10/2015	102	424	19

Date	Daily Maximum		
	SO2 concentration (mg/Nm3) #	NOx concentration (mg/Nm3) #	Opacity (%)
1/11/2015	96	452	28
2/11/2015	114	459	26
3/11/2015	82	300	23
4/11/2015	89	352	23
5/11/2015	70	398	26
6/11/2015	38	409	26
7/11/2015	30	357	25
8/11/2015	23	449	20
9/11/2015	30	409	23
10/11/2015	38	395	22
11/11/2015	38	462	23
12/11/2015	33	453	24
13/11/2015	FGD Plant Outage	378	16
14/11/2015	FGD Plant Outage	454	18
15/11/2015	*	*	*
16/11/2015	*	*	*
17/11/2015	*	*	*
18/11/2015	*	*	*
19/11/2015	*	*	*
20/11/2015	*	*	*
21/11/2015	*	*	*
22/11/2015	*	*	*
23/11/2015	*	*	*
24/11/2015	*	*	*
25/11/2015	*	*	*
26/11/2015	*	*	*
27/11/2015	*	*	*
28/11/2015	FGD Plant Outage	349	19
29/11/2015	*	*	*
30/11/2015	FGD Plant Outage	365	16

Date	Daily Maximum		
	SO2 concentration (mg/Nm3) [#]	NOx concentration (mg/Nm3) [#]	Opacity (%)
1/12/2015	FGD Plant Outage	329	17
2/12/2015	FGD Plant Outage	368	18
3/12/2015	FGD Plant Outage	453	17
4/12/2015	FGD Plant Outage	342	15
5/12/2015	41	306	25
6/12/2015	*	*	*
7/12/2015	67	428	16
8/12/2015	36	500	16
9/12/2015	49	449	17
10/12/2015	34	446	18
11/12/2015	26	347	31
12/12/2015	24	413	25
13/12/2015	*	*	*
14/12/2015	30	391	22
15/12/2015	23	284	18
16/12/2015	27	343	22
17/12/2015	40	446	26
18/12/2015	58	322	29
19/12/2015	*	*	*
20/12/2015	18	397	21
21/12/2015	37	467	25
22/12/2015	25	324	21
23/12/2015	25	373	24
24/12/2015	27	343	26
25/12/2015	*	*	*
26/12/2015	*	*	*
27/12/2015	*	*	*
28/12/2015	19	318	18
29/12/2015	67	284	18
30/12/2015	86	400	19
31/12/2015	65	432	19

Note: # - Hourly average value. Expressed as at 0°C, 101.325kPa, dry and corrected to 12% CO₂ condition.

* - Unit L4 was not on load.

B.2.3 Monthly Summary of Stack SO₂ for Unit L2

Date	Daily Maximum	
	SO ₂ concentration (mg/Nm ³) [#]	Opacity (%)
1/10/2015	*	*
2/10/2015	*	*
3/10/2015	*	*
4/10/2015	*	*
5/10/2015	*	*
6/10/2015	*	*
7/10/2015	*	*
8/10/2015	*	*
9/10/2015	*	*
10/10/2015	*	*
11/10/2015	*	*
12/10/2015	*	*
13/10/2015	*	*
14/10/2015	*	*
15/10/2015	*	*
16/10/2015	*	*
17/10/2015	*	*
18/10/2015	*	*
19/10/2015	*	*
20/10/2015	*	*
21/10/2015	*	*
22/10/2015	*	*
23/10/2015	*	*
24/10/2015	*	*
25/10/2015	*	*
26/10/2015	*	*
27/10/2015	*	*
28/10/2015	*	*
29/10/2015	*	*
30/10/2015	*	*
31/10/2015	*	*

Date	Daily Maximum	
	SO2 concentration (mg/Nm3) [#]	Opacity (%)
1/11/2015	*	*
2/11/2015	*	*
3/11/2015	*	*
4/11/2015	*	*
5/11/2015	*	*
6/11/2015	*	*
7/11/2015	*	*
8/11/2015	*	*
9/11/2015	*	*
10/11/2015	*	*
11/11/2015	*	*
12/11/2015	*	*
13/11/2015	*	*
14/11/2015	*	*
15/11/2015	*	*
16/11/2015	*	*
17/11/2015	*	*
18/11/2015	*	*
19/11/2015	*	*
20/11/2015	*	*
21/11/2015	*	*
22/11/2015	*	*
23/11/2015	*	*
24/11/2015	*	*
25/11/2015	*	*
26/11/2015	*	*
27/11/2015	*	*
28/11/2015	*	*
29/11/2015	*	*
30/11/2015	*	*

Date	Daily Maximum	
	SO2 concentration (mg/Nm3) [#]	Opacity (%)
1/12/2015	*	*
2/12/2015	*	*
3/12/2015	*	*
4/12/2015	*	*
5/12/2015	*	*
6/12/2015	*	*
7/12/2015	*	*
8/12/2015	*	*
9/12/2015	*	*
10/12/2015	*	*
11/12/2015	*	*
12/12/2015	*	*
13/12/2015	*	*
14/12/2015	*	*
15/12/2015	*	*
16/12/2015	*	*
17/12/2015	*	*
18/12/2015	*	*
19/12/2015	*	*
20/12/2015	*	*
21/12/2015	*	*
22/12/2015	*	*
23/12/2015	*	*
24/12/2015	*	*
25/12/2015	*	*
26/12/2015	*	*
27/12/2015	*	*
28/12/2015	*	*
29/12/2015	*	*
30/12/2015	*	*
31/12/2015	*	*

Note: # - Hourly average value. Expressed as at 0°C, 101.325kPa, dry and corrected to 12% CO₂ condition.

* - Unit L2 was not on load.

B.2.4 Summary of Annual Stack Particulate Sampling

Unit	Date	Results (mg/Nm ³)
L4	08/10/2015	13

Monitoring Equipment: APEX model XC-522-V (Manual stack sampling system)

B.3 Ambient SO₂ and NO₂ monitoring Data at Southern District and Cheung Chau

THE HONGKONG ELECTRIC COMPANY, LTD.
AIR QUALITY DATA MONTHLY TIME SERIES REPORT
MONTH:OCTOBER

STATION : VICTORIA PEAK
POLLUTANT : SULPHUR DIOXIDE

YEAR : 2015
UNIT : MICROGRAMS/CUBIC METER

DAY	1	2	3	4	5	6	7	8	9	10	11	12	13	14	15	16	17	18	19	20	21	22	23	24	MEAN
1	6	4	3	2	3	3	6	8	20	5	2	2	1	2	4	7	6	4	5	5	9	15	9	5	6
2	3	2	2	2	3	3	2	3	8	8	5	3	1	1	1	2	3	2	1	0	0	1	0	1	2
3	1	1	1	1	2	3	2	2	3	2	3	2	2	2	2	1	1	1	1	0	0	1	1	0	1
4	0	0	0	0	0	0	0	0	0	0	0	0	0	0	0	0	0	0	0	0	0	0	0	0	0
5	0	0	0	0	0	0	0	0	0	0	0	0	0	0	0	0	0	0	0	0	0	0	0	0	0
6	1	0	1	0	0	1	1	1	0	1	1	1	1	1	1	1	0	0	0	0	0	0	1	0	1
7	0	0	0	0	0	0	0	1	1	1	1	0	1	2	2	4	5	7	3	1	1	3	0	1	1
8	5	16	4	5	6	8	6	8	14	15	19	24	30	29	21	18	13	17	18	16	12	8	7	7	14
9	5	3	3	3	2	2	2	2	4	4	4	4	4	6	10	17	18	4	2	2	3	4	2	2	5
10	1	2	2	2	2	2	1	1	6	4	2	2	3	4	4	4	4	3	1	1	0	0	0	0	2
11	1	1	2	2	1	1	0	0	0	0	1	2	1	1	1	2	1	1	1	0	1	0	0	1	1
12	0	0	0	0	1	2	2	3	4	5	5	5	5	5	5	5	5	5	4	6	7	5	5	4	4
13	4	4	4	5	5	6	6	8	8	9	11	12	11	10	10	10	8	7	6	5	5	4	4	4	7
14	4	4	4	4	4	3	3	6	7	6	7	7	10	9	8	8	7	7	6	6	6	7	4	5	6
15	4	5	5	3	3	2	2	3	5	7	13	40	15	7	M	4	5	4	4	4	5	6	5	6	7
16	6	7	7	6	5	5	5	9	16	15	13	12	18	12	23	26	34	30	21	23	33	19	15	7	15
17	6	7	5	6	6	4	3	3	7	10	7	7	8	17	19	11	7	5	6	6	7	10	9	10	8
18	7	6	5	5	5	5	5	5	7	9	8	27	16	18	20	22	20	19	17	18	14	14	13	11	12
19	10	11	11	14	16	15	15	15	17	12	13	12	11	10	9	9	9	13	12	11	11	10	11	15	12
20	17	18	17	14	12	13	13	14	14	13	12	10	11	8	7	7	7	7	8	10	9	9	9	9	11
21	12	12	11	10	9	8	7	7	15	9	5	11	19	11	8	5	6	4	5	5	9	9	13	14	9
22	8	5	5	5	7	15	20	24	28	21	15	7	6	10	14	5	4	3	8	9	8	9	9	6	10
23	4	3	4	4	4	4	4	3	6	8	13	9	8	14	24	26	43	41	39	33	22	14	12	9	15
24	7	9	8	7	7	5	5	5	6	6	6	6	8	5	4	4	4	6	8	4	3	2	2	1	5
25	1	1	1	1	1	2	2	2	4	4	4	4	3	3	3	3	2	2	2	1	2	2	1	2	2
26	1	2	1	2	2	2	2	2	1	2	2	2	2	2	2	2	2	3	4	6	6	7	6	5	3
27	4	5	5	4	4	3	3	3	6	6	11	12	25	11	33	34	33	44	29	32	30	28	70	10	19
28	20	18	17	16	15	17	18	18	19	15	13	13	15	9	9	6	6	6	3	4	4	4	3	1	11
29	1	2	2	2	1	1	1	1	1	1	2	2	2	1	1	1	1	2	2	2	1	2	2	2	2
30	2	1	1	1	1	1	1	2	2	2	2	2	2	3	3	2	2	2	2	2	2	4	5	2	2
31	2	2	2	1	1	0	0	0	0	1	0	1	1	1	1	0	1	2	2	1	1	0	0	1	1

MONTHLY STATISTICS:

GEOM	ARITH-----PERCENTILES-----								-----RANGE-----				STN GEOM	PERCENT	NO. OF TIMES	
MEAN	MEDIAN	MEAN	50	90	95	98	99	1-HR	24-HR	DEVIATION	VALID DATA	ABOVE	LIMIT	LEVEL		
5	4	6	4	15	20	30	34	0	-	70	0	-	19	3	100	0

NOTES: 1. FLAGS FOR INVALID DATA :
D: DYNAMIC CALIBRATION
T: TELEMETRY/DATALOGGR FAULT
M: MAINTENANCE OR ANALYZER FAULT
P: POWER FAILURE

THE HONGKONG ELECTRIC COMPANY, LTD.
AIR QUALITY DATA MONTHLY TIME SERIES REPORT
MONTH:OCTOBER

STATION : VICTORIA PEAK
POLLUTANT : NITROGEN DIOXIDE

YEAR : 2015
UNIT : MICROGRAMS/CUBIC METER

DAY	1	2	3	4	5	6	7	8	9	10	11	12	13	14	15	16	17	18	19	20	21	22	23	24	MEAN
1	1	2	0	3	6	0	29	39	51	40	32	17	10	8	14	18	24	13	25	74	119	108	97	48	32
2	21	4	5	6	7	4	12	30	40	50	43	36	22	17	3	5	15	4	0	0	0	0	0	3	14
3	0	0	0	0	0	0	2	12	23	20	22	17	2	8	15	4	2	0	0	0	0	0	0	0	5
4	0	0	0	0	0	0	0	0	0	0	0	0	0	0	0	0	0	0	0	0	0	0	0	0	0
5	0	0	0	0	0	0	0	0	0	0	0	1	0	1	0	0	1	0	0	0	0	0	0	0	0
6	0	0	0	0	0	0	0	0	1	6	2	2	0	8	7	5	1	0	0	0	0	0	0	0	1
7	0	0	0	0	0	0	0	2	3	8	12	7	11	7	9	7	14	17	15	6	9	11	0	1	6
8	7	M	3	7	18	14	8	11	14	17	24	37	57	60	31	26	24	40	40	37	45	54	43	28	28
9	21	15	10	11	6	6	13	28	36	45	46	54	39	30	28	44	37	27	59	42	35	48	39	28	31
10	10	7	7	7	9	6	7	13	30	31	33	32	34	41	43	50	56	54	52	40	18	11	11	11	26
11	7	2	2	2	1	0	2	11	14	27	33	31	36	35	38	37	31	38	39	31	35	24	23	11	21
12	8	2	0	0	1	4	18	23	38	51	42	38	27	27	34	53	52	58	53	50	46	32	20	7	29
13	1	4	5	0	1	1	7	10	17	17	15	19	8	8	9	5	8	9	4	8	5	4	0	3	7
14	1	0	0	0	0	1	7	30	39	40	43	37	30	31	31	34	33	11	4	5	4	7	6	2	17
15	1	0	0	0	0	0	9	20	64	74	54	61	23	14	M	36	45	29	15	10	5	6	20	19	22
16	21	11	20	19	18	19	33	50	62	85	74	50	39	39	44	48	64	72	68	113	159	29	19	11	49
17	9	12	10	10	13	14	20	37	39	76	66	45	46	57	42	43	57	59	61	36	15	18	22	32	35
18	34	26	18	11	11	12	19	21	57	47	30	61	39	43	37	34	39	36	41	41	59	74	83	78	40
19	70	51	23	16	18	17	27	44	79	81	74	71	47	49	45	46	50	55	69	68	44	34	37	48	48
20	43	31	27	21	23	20	26	39	67	65	63	56	50	56	58	55	49	76	73	57	45	44	54	48	48
21	40	39	29	30	35	21	24	42	57	54	33	47	63	65	55	52	47	45	30	23	31	22	28	29	39
22	16	M	8	7	18	44	58	54	58	59	62	44	36	39	33	33	32	31	33	29	23	19	15	10	33
23	10	9	14	12	9	10	16	28	45	50	53	46	45	59	56	53	80	74	54	46	29	16	18	10	35
24	10	17	10	25	12	11	14	25	38	45	41	44	27	27	18	17	34	29	20	14	14	10	11	7	22
25	7	7	6	7	6	6	7	7	12	11	14	11	8	8	9	9	7	5	6	7	8	10	13	11	8
26	9	7	6	5	5	6	7	11	36	27	19	18	15	26	27	16	17	24	24	15	12	13	14	18	16
27	16	16	14	15	13	13	18	31	55	64	65	42	39	28	44	55	58	93	117	123	95	120	106	7	52
28	58	65	44	46	30	42	61	73	88	52	55	38	19	25	25	23	31	21	6	8	6	6	5	3	35
29	3	3	3	4	4	4	6	10	20	21	15	14	9	12	17	26	30	37	21	10	10	7	6	4	12
30	5	3	4	5	5	4	5	9	25	32	27	24	35	47	36	24	20	16	14	10	7	11	13	9	16
31	13	7	4	4	4	5	6	7	11	15	13	12	15	18	13	10	12	11	9	7	8	6	7	8	9

MONTHLY STATISTICS:

GEOM	ARITH-----PERCENTILES-----										RANGE-----		STN GEOM	PERCENT	NO. OF TIMES	
MEAN	MEDIAN	MEAN	50	90	95	98	99	1-HR		24-HR		DEVIATION	VALID DATA	ABOVE	LIMIT	LEVEL
18	16	24	16	55	65	80	102	0	-	159	0	-	52	3	100	0

NOTES: 1. FLAGS FOR INVALID DATA :
D: DYNAMIC CALIBRATION
T: TELEMETRY/DATALOGGR FAULT
M: MAINTENANCE OR ANALYZER FAULT
P: POWER FAILURE

THE HONGKONG ELECTRIC COMPANY, LTD.
AIR QUALITY DATA MONTHLY TIME SERIES REPORT
MONTH:OCTOBER

STATION : VICTORIA ROAD SUBSTATION
POLLUTANT : SULPHUR DIOXIDE

YEAR : 2015
UNIT : MICROGRAMS/CUBIC METER

DAY	1	2	3	4	5	6	7	8	9	10	11	12	13	14	15	16	17	18	19	20	21	22	23	24	MEAN
1	5	3	3	3	5	6	5	5	24	20	22	8	1	9	7	8	5	3	5	6	14	22	31	11	10
2	9	1	4	4	2	2	1	1	12	8	10	2	0	0	0	1	1	0	0	0	0	0	0	0	2
3	0	0	0	0	1	1	1	1	0	0	0	0	0	0	0	0	0	0	0	0	0	0	0	0	0
4	0	0	0	0	0	0	0	0	0	0	0	0	0	0	0	0	0	0	0	0	0	0	0	0	0
5	0	0	0	0	0	0	0	0	0	1	0	0	0	0	0	0	0	0	0	0	0	0	0	0	0
6	0	0	0	0	0	0	0	0	0	0	0	0	0	0	0	0	0	0	0	0	0	0	0	1	0
7	0	0	0	0	0	1	1	1	4	2	0	0	1	3	3	7	12	7	13	2	3	7	2	7	3
8	13	15	9	9	7	9	8	8	11	16	17	19	27	25	18	14	15	10	15	12	8	5	5	6	13
9	4	2	3	3	1	1	1	1	2	2	10	8	2	7	10	10	9	2	1	1	1	2	2	2	4
10	1	1	1	1	1	3	2	2	2	2	1	3	3	2	2	2	1	1	0	0	0	0	0	1	1
11	0	0	1	1	1	0	0	0	0	0	0	0	0	0	0	0	0	0	0	0	0	0	0	1	0
12	0	0	0	0	0	1	2	3	4	4	4	4	4	4	4	4	3	3	3	4	5	3	3	3	3
13	2	2	2	3	3	4	4	6	6	7	6	7	7	6	6	6	5	4	3	3	3	2	2	4	4
14	3	3	2	2	2	2	3	3	4	4	4	5	5	6	5	5	5	4	3	3	3	4	3	3	4
15	2	2	2	2	1	1	1	1	8	32	32	21	5	4	6	4	4	4	3	3	3	3	3	4	6
16	3	3	3	3	3	4	5	7	11	12	9	10	13	6	25	16	25	34	21	18	17	13	10	5	12
17	4	4	5	3	3	3	2	2	7	10	15	13	11	16	15	4	4	3	3	4	4	4	5	6	6
18	6	4	4	3	3	3	3	3	8	12	14	17	20	14	18	17	14	16	14	13	11	9	10	9	10
19	8	12	11	9	9	8	9	9	8	11	8	6	8	7	6	6	5	8	7	6	7	8	9	9	8
20	10	11	11	8	7	7	6	8	8	13	11	16	9	9	6	14	13	17	11	10	12	11	6	6	10
21	9	8	6	6	5	16	5	4	20	22	20	11	18	9	3	5	3	4	5	4	5	6	10	11	9
22	8	4	3	2	3	6	11	15	16	14	13	4	10	15	5	2	2	3	5	5	5	6	5	4	7
23	2	2	2	2	2	2	2	2	3	11	14	10	8	17	18	29	38	26	23	21	17	10	7	8	12
24	4	3	4	4	4	3	2	3	3	3	4	12	3	2	2	2	2	3	3	1	1	0	0	1	3
25	0	0	1	0	0	0	1	1	2	1	2	2	1	1	1	1	0	1	0	0	0	0	1	1	1
26	0	0	0	0	0	0	0	0	0	0	0	1	0	0	0	0	1	1	2	3	3	4	3	3	1
27	2	2	2	3	4	6	7	8	9	19	14	15	16	11	25	28	30	26	24	23	24	25	30	12	15
28	8	13	15	15	9	9	12	11	14	16	9	9	13	7	6	3	4	3	1	2	2	2	2	1	8
29	0	1	1	1	0	0	0	0	0	0	0	0	0	0	0	0	0	0	1	0	0	0	1	1	0
30	1	0	0	1	0	0	0	1	1	1	8	4	1	1	0	1	1	0	0	0	0	1	1	1	1
31	0	0	0	0	0	0	0	0	0	0	0	0	0	0	0	0	0	0	0	0	0	0	0	0	0

MONTHLY STATISTICS:

GEOM	ARITH-----PERCENTILES-----								-----RANGE-----				STN GEOM	PERCENT	NO. OF TIMES	
MEAN	MEDIAN	MEAN	50	90	95	98	99	1-HR	24-HR	DEVIATION	VALID DATA	ABOVE	LIMIT	LEVEL		
5	3	5	3	14	18	25	29	0	-	38	0	-	15	3	100	0

- NOTES: 1. FLAGS FOR INVALID DATA :
- D: DYNAMIC CALIBRATION
 - T: TELEMETRY/DATALOGGR FAULT
 - M: MAINTENANCE OR ANALYZER FAULT
 - P: POWER FAILURE

THE HONGKONG ELECTRIC COMPANY, LTD.
AIR QUALITY DATA MONTHLY TIME SERIES REPORT
MONTH:OCTOBER

STATION : VICTORIA ROAD SUBSTATION
POLLUTANT : NITROGEN DIOXIDE

YEAR : 2015
UNIT : MICROGRAMS/CUBIC METER

DAY	1	2	3	4	5	6	7	8	9	10	11	12	13	14	15	16	17	18	19	20	21	22	23	24	MEAN
1	16	11	8	5	10	17	29	46	54	45	45	25	16	21	19	21	20	54	62	60	89	91	94	45	38
2	40	12	20	16	13	16	19	34	43	41	46	34	21	19	20	14	23	14	13	3	3	2	4	6	20
3	2	1	2	1	1	2	7	10	10	14	13	9	2	4	7	5	1	1	2	1	0	0	2	1	4
4	0	0	0	0	0	0	0	0	0	0	0	0	1	0	0	0	1	1	0	0	0	0	0	1	0
5	0	0	0	0	0	0	1	1	1	1	1	2	2	1	1	0	2	3	3	1	0	0	0	1	1
6	0	0	0	0	0	0	4	11	3	6	6	4	2	5	5	6	7	9	8	2	5	4	7	5	4
7	1	M	0	0	0	4	11	24	25	10	9	13	16	18	24	18	19	12	26	24	23	20	18	21	15
8	23	22	17	15	18	20	20	22	16	22	29	41	62	56	48	43	49	48	71	78	63	52	53	56	39
9	30	19	16	12	7	8	25	35	28	34	39	39	28	31	28	24	27	29	63	48	34	41	50	38	31
10	17	13	12	12	12	18	14	17	21	24	27	36	34	34	41	41	43	50	46	31	17	12	12	14	25
11	9	7	7	8	5	4	7	13	12	17	23	26	27	31	31	32	33	34	34	33	29	24	23	10	20
12	13	5	2	1	6	6	27	41	43	38	35	31	22	17	21	36	49	58	71	64	47	26	21	22	29
13	7	6	8	1	3	6	13	17	18	16	14	19	11	10	19	31	22	22	15	10	9	7	6	6	12
14	4	4	2	2	3	6	12	24	23	20	24	20	9	7	23	29	46	23	19	17	23	19	18	19	17
15	15	5	3	3	2	4	26	53	41	57	52	36	7	3	5	6	8	27	34	28	28	24	41	32	23
16	24	11	11	8	7	9	22	42	50	45	29	13	21	7	43	21	36	71	80	58	55	24	11	25	30
17	23	12	11	9	7	9	10	31	49	41	48	48	50	33	29	11	11	39	55	42	29	39	52	33	30
18	29	28	14	9	4	5	15	19	53	48	37	32	32	17	20	19	27	36	37	40	35	64	61	80	32
19	69	86	34	12	12	14	41	51	60	66	63	52	43	38	42	49	53	45	49	54	60	56	62	60	49
20	48	26	24	17	13	17	35	42	49	57	56	50	41	42	36	46	48	77	56	45	67	55	37	42	43
21	45	M	25	24	21	44	33	35	50	50	47	40	33	15	7	11	12	26	35	42	44	30	26	24	31
22	13	6	7	6	4	18	55	52	49	42	53	36	31	35	14	10	15	40	38	37	24	16	13	15	26
23	15	9	9	12	6	13	29	50	43	58	47	43	42	48	37	49	62	62	61	48	34	24	18	30	35
24	27	16	12	12	16	11	24	19	21	22	21	19	14	17	17	16	18	15	17	13	11	7	8	5	16
25	2	1	0	0	0	0	2	3	5	4	4	3	1	2	5	6	4	3	3	3	2	3	6	5	3
26	2	0	0	0	0	0	4	11	16	12	12	10	9	14	10	11	11	18	18	15	13	13	15	23	10
27	20	12	9	9	11	14	26	40	30	35	21	20	19	17	46	50	56	76	96	96	82	62	49	34	39
28	12	22	19	19	26	33	45	60	46	47	43	22	21	16	17	17	22	17	11	9	6	7	4	4	23
29	2	0	0	0	0	0	6	9	7	6	6	7	7	6	12	11	10	15	18	11	10	5	5	4	7
30	3	2	0	0	0	1	13	16	16	14	25	17	8	2	10	28	32	19	15	13	18	12	11	7	12
31	6	0	0	0	0	0	1	3	5	6	8	5	3	9	11	14	7	9	7	4	3	2	2	4	5

MONTHLY STATISTICS:

GEOM	ARITH-----PERCENTILES-----										RANGE-----		STN GEOM	PERCENT	NO. OF TIMES	
MEAN	MEDIAN	MEAN	50	90	95	98	99	1-HR		24-HR		DEVIATION	VALID DATA	ABOVE	LIMIT	LEVEL
15	16	21	16	49	58	69	80	0	-	96	0	-	49	3	100	0

- NOTES: 1. FLAGS FOR INVALID DATA :
D: DYNAMIC CALIBRATION
T: TELEMETRY/DATALOGGR FAULT
M: MAINTENANCE OR ANALYZER FAULT
P: POWER FAILURE

THE HONGKONG ELECTRIC COMPANY, LTD.
AIR QUALITY DATA MONTHLY TIME SERIES REPORT
MONTH:OCTOBER

STATION : POK FU LAM
POLLUTANT : SULPHUR DIOXIDE

YEAR : 2015
UNIT : MICROGRAMS/CUBIC METER

DAY	1	2	3	4	5	6	7	8	9	10	11	12	13	14	15	16	17	18	19	20	21	22	23	24	MEAN
1	8	6	7	8	8	10	10	7	11	37	45	44	21	17	12	15	9	7	8	12	20	16	21	29	16
2	15	5	5	5	6	6	5	6	10	6	7	6	5	4	4	5	5	5	5	5	5	5	5	5	6
3	4	5	5	5	6	7	7	7	7	M	6	6	5	6	6	7	6	6	6	5	6	6	7	7	6
4	6	6	6	6	6	6	6	7	7	7	7	6	6	6	7	6	7	7	6	7	6	7	7	8	7
5	6	6	6	6	6	7	7	7	7	7	7	7	6	6	5	6	6	6	6	6	6	6	6	6	6
6	5	5	6	5	5	5	5	6	6	6	6	6	6	6	6	6	6	6	6	6	6	6	7	8	6
7	7	6	6	6	7	8	8	8	10	9	7	6	7	9	9	15	22	15	24	9	8	11	6	12	10
8	15	17	15	17	23	19	17	17	21	27	35	43	48	48	30	31	24	22	33	25	19	15	13	14	25
9	12	11	11	11	10	9	10	10	9	10	10	15	11	18	19	24	27	15	13	13	15	15	14	15	14
10	13	14	14	14	15	14	14	14	16	17	15	18	18	18	18	17	17	16	16	16	16	16	16	17	16
11	17	18	18	18	18	17	18	16	17	16	17	18	18	18	18	19	19	20	20	20	20	21	19	20	18
12	20	21	21	21	22	24	25	27	27	28	D	D	0	0	0	0	0	0	0	1	1	0	0	4	11
13	4	4	4	6	6	8	8	11	11	13	14	15	14	15	15	16	15	13	12	11	12	11	11	13	11
14	13	13	13	14	14	14	15	17	19	18	18	23	21	22	21	22	23	22	22	22	21	22	25	1	18
15	0	1	1	1	2	3	3	3	6	25	47	44	24	22	24	23	24	25	27	28	30	31	29	1	18
16	3	3	6	9	11	13	13	17	22	M	M	5	20	9	31	16	41	39	31	27	26	29	25	9	18
17	6	10	10	11	13	13	13	15	23	23	34	27	25	36	37	26	26	27	27	29	30	32	34	39	24
18	36	35	36	37	38	39	42	43	51	54	54	57	55	55	53	60	61	65	64	63	60	61	67	65	52
19	67	68	67	68	67	70	72	73	70	71	M	M	M	M	M	M	7	11	11	9	12	14	13	13	44
20	13	14	16	12	10	9	9	10	10	14	12	17	11	10	6	14	18	36	22	16	21	20	12	10	14
21	19	12	9	8	7	5	6	5	6	5	11	15	19	11	11	17	4	3	4	4	4	6	7	13	9
22	9	4	4	3	6	11	17	21	20	17	13	5	8	25	10	3	2	2	4	5	5	8	6	5	9
23	3	3	3	3	3	3	3	3	3	18	21	11	12	18	22	24	41	36	34	28	21	13	9	7	14
24	4	4	5	6	5	4	3	4	4	4	3	17	6	4	2	2	2	3	5	2	1	1	1	0	4
25	0	1	0	0	0	1	0	1	2	2	2	2	2	1	1	1	0	0	0	0	1	0	0	0	1
26	0	0	0	0	0	0	0	0	0	0	0	0	0	0	0	0	0	0	1	3	3	3	4	4	1
27	4	4	2	3	7	7	5	8	9	22	39	16	12	12	25	31	35	31	36	24	23	25	25	12	17
28	9	13	13	11	12	12	10	12	15	21	13	10	15	9	8	4	4	4	2	3	2	2	2	0	9
29	0	1	0	1	0	0	0	0	0	0	0	0	0	0	0	0	0	0	1	0	0	1	0	0	0
30	0	0	0	0	0	0	0	1	0	12	14	9	3	1	0	0	0	0	0	0	0	1	2	1	2
31	1	1	1	1	0	0	0	0	0	0	0	0	0	0	0	0	1	1	0	0	1	0	0	0	0

MONTHLY STATISTICS:

GEOM	ARITH-----PERCENTILES-----										RANGE-----		STN GEOM	PERCENT	NO. OF TIMES	
MEAN	MEDIAN	MEAN	50	90	95	98	99	1-HR		24-HR		DEVIATION	VALID DATA	ABOVE	LIMIT	LEVEL
10	8	13	8	28	40	62	67	0	-	73	0	-	52	3	99	0

- NOTES: 1. FLAGS FOR INVALID DATA :
- D: DYNAMIC CALIBRATION
 - T: TELEMETRY/DATALOGGR FAULT
 - M: MAINTENANCE OR ANALYZER FAULT
 - P: POWER FAILURE

THE HONGKONG ELECTRIC COMPANY, LTD.
AIR QUALITY DATA MONTHLY TIME SERIES REPORT
MONTH:OCTOBER

STATION : POK FU LAM
POLLUTANT : NITROGEN DIOXIDE

YEAR : 2015
UNIT : MICROGRAMS/CUBIC METER

DAY	1	2	3	4	5	6	7	8	9	10	11	12	13	14	15	16	17	18	19	20	21	22	23	24	MEAN
1	10	6	7	9	15	15	44	46	56	74	67	52	37	26	22	27	23	38	59	74	101	102	107	79	46
2	49	17	12	22	19	14	14	29	44	44	48	46	35	21	15	18	17	19	12	7	2	2	6	6	22
3	5	3	2	2	2	5	9	9	13	M	10	13	6	8	9	12	12	7	8	3	0	0	0	1	6
4	0	0	1	0	0	0	0	2	0	0	1	0	1	0	1	0	1	1	2	2	1	1	0	0	1
5	0	0	0	0	0	0	1	2	2	3	2	3	4	4	4	5	11	17	13	9	2	0	1	2	4
6	2	1	2	1	2	3	5	9	7	10	7	8	8	6	6	9	13	18	9	5	5	6	8	5	6
7	4	3	3	3	3	6	8	17	25	12	11	10	14	19	22	30	37	35	41	21	14	16	8	16	16
8	21	29	25	23	32	31	27	27	26	33	45	65	91	87	53	50	51	61	78	101	85	62	71	70	52
9	54	39	27	23	17	17	29	37	51	51	47	44	32	34	45	39	52	54	69	57	37	60	58	42	42
10	18	15	16	21	24	9	14	17	31	34	29	48	52	47	53	57	61	66	62	43	25	17	18	15	33
11	13	M	13	15	10	9	14	21	22	32	36	41	39	38	44	49	42	45	43	40	33	22	14	12	28
12	18	15	14	14	16	18	28	40	51	51	D	38	34	39	55	71	66	51	40	39	39	41	28	37	
13	14	15	18	9	15	13	13	26	32	29	27	25	22	19	21	16	16	24	26	26	22	19	18	15	20
14	13	12	9	8	8	9	14	29	46	42	35	40	22	22	27	35	28	34	31	38	54	48	37	21	28
15	15	14	11	9	10	9	13	36	47	63	75	73	23	25	25	26	31	36	39	37	26	37	56	66	33
16	48	25	25	21	19	30	42	48	61	67	65	31	43	20	48	31	57	78	94	89	109	52	23	16	48
17	13	16	16	12	14	13	28	84	76	54	62	58	54	52	36	26	25	47	67	56	33	34	60	60	42
18	41	32	27	12	8	13	27	25	103	51	44	43	33	27	25	28	28	31	34	40	60	90	99	82	42
19	115	124	41	20	22	22	27	46	78	74	80	54	49	41	52	68	71	63	64	72	101	100	104	82	65
20	69	44	39	29	24	27	34	57	73	79	77	59	48	48	43	55	61	93	70	94	133	130	102	117	67
21	112	45	47	36	29	26	32	36	53	53	52	58	42	29	30	40	19	26	27	30	24	17	16	23	38
22	15	6	6	5	10	38	77	68	65	58	65	47	38	66	31	28	33	42	46	46	21	14	12	16	36
23	15	10	12	14	9	8	18	36	55	67	56	48	51	60	48	44	80	69	51	39	35	21	19	18	37
24	15	22	17	25	19	12	17	20	24	34	23	32	20	22	15	12	14	16	29	19	16	11	13	9	19
25	8	M	7	6	5	6	7	8	11	9	10	10	7	6	8	10	7	6	7	10	11	12	12	10	8
26	6	5	4	3	3	4	8	13	26	39	25	21	19	28	33	22	18	39	50	28	23	24	25	39	21
27	33	31	20	16	23	32	33	40	38	50	48	29	20	27	39	51	54	70	107	110	106	83	45	30	47
28	23	36	32	29	45	59	60	62	64	63	67	39	24	21	18	20	14	15	11	12	9	8	6	5	31
29	3	4	4	4	3	3	7	12	11	11	10	11	11	12	17	14	11	25	36	21	24	25	17	13	13
30	10	4	4	5	4	4	8	18	28	48	57	39	30	23	29	27	24	29	31	26	17	18	17	17	22
31	15	11	7	6	6	6	9	10	15	20	18	18	17	20	21	11	16	17	15	12	12	9	9	11	13

MONTHLY STATISTICS:

GEOM	ARITH-----PERCENTILES-----										RANGE-----		STN GEOM	PERCENT	NO. OF TIMES	
MEAN	MEDIAN	MEAN	50	90	95	98	99	1-HR		24-HR		DEVIATION	VALID DATA	ABOVE LIMIT LEVEL		
21	23	30	23	64	78	101	108	0	-	133	1	-	67	3	99	0

- NOTES: 1. FLAGS FOR INVALID DATA :
- D: DYNAMIC CALIBRATION
 - T: TELEMETRY/DATALOGGR FAULT
 - M: MAINTENANCE OR ANALYZER FAULT
 - P: POWER FAILURE

THE HONGKONG ELECTRIC COMPANY, LTD.
AIR QUALITY DATA MONTHLY TIME SERIES REPORT
MONTH:OCTOBER

STATION : AP LEI CHAU
POLLUTANT : SULPHUR DIOXIDE

YEAR : 2015
UNIT : MICROGRAMS/CUBIC METER

DAY	1	2	3	4	5	6	7	8	9	10	11	12	13	14	15	16	17	18	19	20	21	22	23	24	MEAN
1	10	11	11	6	9	13	32	38	33	3	3	2	3	8	7	22	23	9	14	13	43	38	15	7	16
2	14	3	3	13	5	3	3	3	6	5	4	3	2	2	2	1	1	0	0	0	0	0	0	1	3
3	0	0	0	0	1	2	1	1	1	0	1	1	1	1	0	0	0	0	0	0	0	0	0	2	1
4	3	2	2	3	2	2	3	2	2	1	3	3	2	2	3	2	2	3	2	2	2	2	2	1	2
5	0	0	0	0	0	0	0	1	1	1	1	0	0	0	0	0	0	0	0	0	0	0	0	1	0
6	0	0	0	0	0	0	0	1	0	1	2	0	0	0	0	0	0	0	0	0	1	0	1	3	0
7	2	1	1	2	2	4	3	3	8	2	2	2	4	5	9	13	27	29	14	3	14	12	7	21	8
8	41	41	20	15	11	12	10	11	13	19	23	32	44	37	27	19	14	11	14	14	9	6	4	7	19
9	4	3	3	3	3	2	2	2	11	19	21	9	6	15	12	12	3	1	0	1	2	1	3	1	6
10	1	0	2	1	0	0	0	0	2	1	1	1	1	1	3	1	0	0	0	0	0	0	0	2	1
11	2	2	2	4	2	1	1	2	2	2	2	4	3	2	2	4	2	2	3	2	1	1	1	1	2
12	0	0	0	0	0	1	2	3	4	4	3	3	4	3	4	3	3	3	2	3	4	3	3	2	2
13	3	4	3	4	5	5	6	7	8	10	10	11	10	9	8	7	6	3	2	3	3	2	3	3	6
14	4	4	3	3	3	3	4	4	5	5	6	7	9	10	7	8	7	6	4	4	3	5	4	3	5
15	3	3	3	2	3	2	2	2	3	4	12	6	5	4	5	5	4	4	3	3	4	5	4	4	4
16	4	4	4	5	6	6	5	6	8	11	9	8	10	17	25	25	24	31	26	27	26	12	9	8	13
17	7	7	7	6	5	6	4	3	4	6	16	29	24	22	19	12	5	4	3	3	5	6	7	8	9
18	6	5	4	3	4	4	3	4	5	13	28	17	14	19	22	18	15	17	15	15	13	12	12	11	12
19	9	34	24	12	12	14	11	11	12	10	11	9	11	9	6	6	5	8	7	8	7	7	7	9	11
20	11	11	11	11	12	9	8	9	11	11	15	22	11	11	23	16	15	21	13	12	18	23	9	41	15
21	14	9	9	8	6	9	6	7	24	25	41	20	11	4	1	1	2	3	5	5	5	8	10	12	10
22	9	4	3	3	5	7	14	16	18	16	13	8	7	13	2	2	2	4	5	6	4	6	6	7	8
23	4	3	2	3	4	4	3	4	6	16	18	13	17	27	21	41	46	30	26	24	17	11	10	11	15
24	5	5	5	4	5	5	5	4	3	5	4	3	3	3	3	3	4	2	4	1	1	0	0	1	3
25	0	1	1	0	1	2	1	2	2	2	3	3	2	2	2	2	1	1	0	0	1	0	1	1	1
26	0	0	0	0	0	0	0	0	0	0	0	0	1	0	0	2	1	0	1	5	5	6	3	4	1
27	4	3	3	2	3	3	3	4	12	18	5	2	10	12	43	36	36	34	27	36	35	85	92	73	24
28	33	31	21	17	18	12	14	14	15	16	14	18	17	9	8	5	5	2	1	3	2	3	1	1	12
29	1	2	1	1	1	1	1	1	1	1	1	1	1	2	2	1	0	0	0	0	0	1	2	2	1
30	2	1	1	2	1	1	2	2	2	3	1	1	2	2	1	1	1	0	0	0	1	2	3	1	1
31	2	2	1	0	0	0	0	0	0	0	0	0	1	1	1	1	1	0	0	0	1	0	1	1	1

MONTHLY STATISTICS:

GEOM	ARITH-----PERCENTILES-----										RANGE-----		STN GEOM	PERCENT	NO. OF TIMES	
MEAN	MEDIAN	MEAN	50	90	95	98	99	1-HR		24-HR		DEVIATION	VALID DATA	ABOVE	LIMIT	LEVEL
5	3	7	3	17	26	36	41	0	-	92	0	-	24	3	100	0

- NOTES: 1. FLAGS FOR INVALID DATA :
- D: DYNAMIC CALIBRATION
 - T: TELEMETRY/DATALOGGR FAULT
 - M: MAINTENANCE OR ANALYZER FAULT
 - P: POWER FAILURE

THE HONGKONG ELECTRIC COMPANY, LTD.
AIR QUALITY DATA MONTHLY TIME SERIES REPORT
MONTH:OCTOBER

STATION : AP LEI CHAU
POLLUTANT : NITROGEN DIOXIDE

YEAR : 2015
UNIT : MICROGRAMS/CUBIC METER

DAY	1	2	3	4	5	6	7	8	9	10	11	12	13	14	15	16	17	18	19	20	21	22	23	24	MEAN
1	10	9	8	9	16	20	51	54	41	26	24	12	9	6	9	20	31	43	24	37	89	81	37	34	29
2	50	19	16	35	19	15	22	37	45	42	48	36	19	9	10	13	8	6	2	0	0	0	0	3	19
3	3	3	2	3	4	9	13	15	17	17	10	7	3	5	8	4	6	1	1	0	0	0	0	1	6
4	0	0	0	0	0	0	0	0	0	0	0	0	0	0	0	0	0	1	0	0	0	0	0	1	0
5	0	0	0	0	0	0	0	0	0	0	0	0	0	0	0	1	7	6	5	3	0	0	0	1	1
6	0	0	0	0	0	0	0	0	0	0	1	0	0	0	0	1	2	2	0	0	0	0	4	1	0
7	0	M	0	0	0	3	1	3	7	0	0	1	4	3	7	15	29	29	25	9	17	19	7	27	9
8	28	29	24	18	24	26	23	23	20	24	34	50	83	67	56	40	39	45	56	55	50	49	41	39	39
9	36	26	19	16	14	14	21	29	41	50	51	64	46	36	27	31	10	6	28	33	27	39	51	23	31
10	14	13	13	13	12	13	12	16	21	13	14	23	28	31	44	42	48	53	53	38	23	15	15	8	24
11	5	3	6	6	2	2	6	10	14	20	23	31	36	36	39	42	36	43	49	42	36	29	18	12	23
12	12	10	6	3	5	13	23	31	36	36	31	27	18	11	14	19	33	32	24	47	47	23	19	2	22
13	13	7	1	1	5	5	6	8	9	4	6	8	3	1	1	0	4	4	2	2	2	0	0	4	4
14	3	2	4	4	5	6	14	30	22	16	9	13	9	6	7	3	4	4	10	15	25	22	15	7	11
15	3	4	3	4	6	7	19	32	29	20	28	7	1	0	2	3	2	4	3	3	14	16	16	23	10
16	20	10	7	5	7	9	21	31	27	32	15	12	13	18	34	34	47	31	20	15	13	14	7	22	19
17	23	11	11	10	8	13	19	40	52	48	65	62	47	28	19	4	6	7	8	10	11	27	24	21	24
18	15	15	9	8	7	7	15	24	33	54	54	24	17	16	20	16	10	20	22	19	9	8	24	17	19
19	54	83	62	19	9	18	18	34	39	58	59	58	51	35	39	32	35	48	54	58	55	48	29	39	43
20	37	28	18	15	18	17	23	42	47	65	67	52	44	50	48	41	47	60	65	63	77	105	97	119	52
21	76	M	32	29	25	25	24	36	57	62	62	49	17	6	1	5	6	17	18	15	12	15	20	31	28
22	22	6	7	5	6	15	49	43	51	51	58	29	16	33	2	0	2	8	12	13	7	17	22	24	21
23	9	10	7	7	8	9	19	18	20	44	51	40	41	34	28	50	56	35	22	16	17	16	8	15	24
24	16	20	10	8	9	10	13	22	15	13	8	4	5	1	0	0	2	2	6	1	2	1	0	2	7
25	1	1	0	0	0	1	2	2	2	5	1	1	3	3	2	1	0	1	0	1	0	1	3	1	
26	2	1	1	0	0	1	1	5	14	14	6	9	5	8	5	4	9	6	7	8	7	5	5	11	6
27	10	11	8	7	9	14	23	41	34	37	12	8	12	17	46	40	48	36	29	44	33	82	75	82	32
28	40	40	42	28	40	41	51	46	38	48	28	9	11	3	2	2	5	7	3	4	2	3	1	2	21
29	0	0	0	1	0	0	1	2	1	2	2	3	2	2	1	2	2	7	7	8	2	2	2	3	2
30	2	1	3	2	1	0	8	12	7	2	0	0	1	0	1	1	3	2	2	1	3	5	5	4	3
31	3	1	0	0	0	0	1	0	2	4	1	1	2	3	2	1	2	2	1	1	1	0	1	3	1

MONTHLY STATISTICS:

GEOM	ARITH-----PERCENTILES-----							-----RANGE-----					STN GEOM	PERCENT	NO. OF TIMES	
MEAN	MEDIAN	MEAN	50	90	95	98	99	1-HR		24-HR			DEVIATION	VALID DATA	ABOVE LIMIT LEVEL	
11	10	17	10	47	54	65	82	0	-	119	0	-	52	3	100	0

- NOTES: 1. FLAGS FOR INVALID DATA :
D: DYNAMIC CALIBRATION
T: TELEMETRY/DATALOGGR FAULT
M: MAINTENANCE OR ANALYZER FAULT
P: POWER FAILURE

THE HONGKONG ELECTRIC COMPANY, LTD.
AIR QUALITY DATA MONTHLY TIME SERIES REPORT
MONTH:OCTOBER

STATION : CHEUNG CHAU
POLLUTANT : SULPHUR DIOXIDE

YEAR : 2015
UNIT : MICROGRAMS/CUBIC METER

DAY	1	2	3	4	5	6	7	8	9	10	11	12	13	14	15	16	17	18	19	20	21	22	23	24	MEAN
1	0	0	0	0	0	0	0	0	1	1	5	7	6	5	9	9	7	0	0	0	0	2	2	5	2
2	6	6	2	1	0	0	0	0	1	2	0	1	2	4	1	2	3	5	1	2	3	1	0	0	2
3	0	1	1	0	1	2	2	2	3	3	1	1	0	0	0	0	0	2	0	0	0	0	0	0	1
4	0	4	0	0	0	0	0	0	0	0	0	0	0	0	0	0	0	0	0	0	0	0	0	0	0
5	0	0	0	0	0	0	0	1	1	2	3	4	3	0	0	0	0	0	0	0	0	0	0	0	1
6	0	0	1	1	1	0	0	0	1	0	1	0	1	0	1	1	0	0	0	0	0	0	1	1	0
7	1	2	2	1	2	3	1	2	4	5	2	1	5	4	1	0	0	0	0	0	0	2	3	2	
8	3	2	0	2	2	2	3	2	3	4	7	6	7	6	3	3	5	6	5	5	7	5	3	4	4
9	4	3	4	4	4	4	2	1	1	1	3	1	1	3	3	5	22	15	7	5	3	2	1	1	4
10	3	2	1	1	2	2	2	1	3	4	3	2	2	1	1	0	1	1	0	0	0	0	0	0	1
11	0	0	0	0	0	0	0	0	0	0	0	0	0	0	0	0	0	0	0	0	0	0	0	0	0
12	0	0	1	0	1	2	2	4	4	5	4	5	4	4	4	3	3	3	3	3	4	3	2	3	3
13	1	1	1	2	3	3	4	5	5	9	9	9	10	7	6	5	4	4	8	4	3	6	4	4	5
14	3	4	3	1	2	2	1	2	3	5	5	6	6	7	7	6	5	4	3	3	1	4	8	3	4
15	3	3	2	3	2	2	2	2	2	3	7	7	6	6	6	7	7	7	8	10	9	7	6	4	5
16	4	3	3	3	3	5	6	5	9	11	12	D	D	6	9	12	19	13	14	13	20	20	10	6	9
17	7	6	9	5	5	4	3	6	5	8	8	6	6	7	14	14	10	15	11	10	9	7	7	6	8
18	5	4	5	4	4	3	3	5	8	9	7	6	10	13	13	13	9	22	18	13	13	16	12	10	9
19	9	9	8	8	9	9	9	9	10	8	8	7	6	5	7	7	9	9	8	5	6	10	9	11	8
20	10	11	10	11	14	14	13	13	11	11	10	9	8	9	10	9	8	10	17	15	14	9	6	4	11
21	6	10	9	8	6	5	4	5	6	6	5	4	7	7	10	11	15	19	13	13	11	10	12	17	9
22	9	10	8	8	9	8	8	12	13	12	10	9	8	10	11	7	19	14	9	7	10	9	8	9	10
23	7	6	4	3	3	4	4	6	9	12	10	7	8	8	10	10	11	10	10	10	15	13	13	8	8
24	6	8	7	5	6	6	4	4	5	6	6	6	3	4	1	2	3	4	4	4	2	2	0	0	4
25	1	2	11	4	0	4	1	1	8	18	10	8	6	1	12	17	1	3	1	0	1	2	7	9	5
26	6	2	5	4	3	4	2	3	3	3	2	5	5	2	6	2	0	1	1	3	3	3	4	5	3
27	5	4	4	3	2	2	2	5	9	12	15	6	5	4	17	23	29	9	3	7	5	4	2	2	7
28	3	3	4	4	5	6	5	6	7	16	18	16	25	11	12	9	5	4	2	1	2	2	1	1	7
29	1	0	0	0	2	1	1	0	0	0	0	0	0	0	0	0	1	2	3	1	0	1	2	1	1
30	2	1	0	1	2	2	1	3	5	3	2	1	1	0	1	3	1	1	0	0	3	1	1	3	2
31	2	6	7	5	1	2	14	9	4	8	5	8	7	3	1	0	1	1	0	0	0	0	1	2	4

MONTHLY STATISTICS:

GEOM	ARITH-----PERCENTILES-----							-----RANGE-----				STN GEOM	PERCENT	NO. OF TIMES		
MEAN	MEDIAN	MEAN	50	90	95	98	99	1-HR	24-HR	DEVIATION	VALID DATA	ABOVE	LIMIT	LEVEL		
4	3	4	3	10	13	17	19	0	-	29	0	-	11	2	100	0

- NOTES: 1. FLAGS FOR INVALID DATA :
- D: DYNAMIC CALIBRATION
 - T: TELEMETRY/DATALOGGR FAULT
 - M: MAINTENANCE OR ANALYZER FAULT
 - P: POWER FAILURE

THE HONGKONG ELECTRIC COMPANY, LTD.
AIR QUALITY DATA MONTHLY TIME SERIES REPORT
MONTH:OCTOBER

STATION : CHEUNG CHAU
POLLUTANT : NITROGEN DIOXIDE

YEAR : 2015
UNIT : MICROGRAMS/CUBIC METER

DAY	1	2	3	4	5	6	7	8	9	10	11	12	13	14	15	16	17	18	19	20	21	22	23	24	MEAN
1	1	1	3	12	14	24	43	38	41	38	33	26	19	10	7	7	12	29	63	72	48	25	32	38	27
2	60	49	23	16	9	10	19	21	22	33	31	46	49	48	23	9	14	17	7	11	16	4	5	8	23
3	9	11	18	15	27	28	33	39	38	36	37	16	8	6	8	13	8	17	6	3	6	2	1	2	16
4	2	16	1	0	0	0	0	0	0	0	3	0	0	0	1	4	3	2	5	3	3	1	8	1	2
5	3	3	4	2	0	2	3	2	1	2	3	5	3	1	3	3	5	13	8	11	6	3	6	5	4
6	1	5	7	9	9	1	7	6	5	3	5	8	6	2	1	4	8	25	14	1	8	7	7	10	7
7	4	8	15	9	6	8	4	5	5	6	4	3	11	8	4	14	21	13	16	18	10	14	28	33	11
8	32	22	9	19	17	15	31	20	11	9	12	8	14	23	20	19	23	47	44	48	38	53	35	42	25
9	42	38	35	25	27	24	20	24	25	34	32	27	25	21	23	17	35	28	15	22	45	59	38	32	30
10	43	34	24	19	22	26	29	32	34	37	48	49	44	37	35	30	43	43	33	27	20	15	15	13	31
11	17	12	10	12	13	11	17	12	15	29	27	22	23	20	22	29	36	36	38	36	33	35	36	37	24
12	29	44	41	35	31	29	37	38	48	65	54	47	42	46	29	18	49	35	26	24	39	20	14	11	35
13	9	18	7	4	15	31	33	8	10	18	24	10	8	3	2	2	3	4	17	9	9	10	7	8	11
14	5	8	8	4	5	6	7	10	17	24	19	14	7	6	7	6	4	4	4	5	4	12	21	11	9
15	9	8	7	9	6	27	35	57	45	46	32	18	7	6	6	6	10	12	15	15	10	9	8	5	17
16	7	10	22	20	38	58	46	41	42	39	57	D	D	8	11	16	33	20	22	16	26	18	13	5	26
17	6	7	16	M	12	27	53	68	35	32	36	46	42	20	13	15	15	26	20	17	15	10	11	11	24
18	39	25	48	16	9	21	38	63	57	34	23	20	21	13	10	12	9	37	20	12	13	15	27	23	25
19	42	66	40	29	14	16	33	31	33	44	38	36	27	32	38	38	37	57	48	61	53	66	76	74	43
20	64	54	38	30	32	33	43	48	45	49	54	58	57	51	49	45	24	23	44	40	102	111	75	106	53
21	82	80	75	51	25	13	18	35	37	42	36	36	28	16	6	12	19	22	19	20	10	8	12	27	30
22	57	56	61	45	39	32	53	65	58	48	44	47	48	26	13	5	27	23	14	13	12	7	8	31	35
23	26	16	22	15	12	25	46	62	59	54	36	31	23	24	30	22	24	26	16	16	20	15	18	10	27
24	7	10	10	6	9	17	33	14	29	33	35	18	6	10	1	1	4	5	8	11	7	7	2	3	12
25	5	8	26	11	1	11	3	3	14	22	14	10	8	2	15	19	5	8	5	3	3	5	12	22	10
26	18	8	21	18	11	15	7	14	13	14	8	11	12	9	24	15	0	2	5	5	6	3	7	10	11
27	15	11	14	31	25	23	44	50	54	43	24	8	6	4	13	22	36	17	7	9	15	30	37	41	24
28	61	21	20	24	34	63	60	55	36	42	45	14	24	9	10	7	4	9	3	3	3	3	2	3	23
29	3	2	3	1	5	3	4	3	2	2	3	2	1	1	0	0	3	4	10	7	3	2	4	5	3
30	3	3	2	5	7	7	5	12	14	13	4	1	2	0	2	6	5	1	2	2	7	6	6	11	5
31	8	14	16	9	5	9	22	17	13	15	12	14	9	7	3	0	3	4	7	7	5	4	11	16	10

MONTHLY STATISTICS:

GEOM	ARITH-----PERCENTILES-----										RANGE-----		STN GEOM	PERCENT	NO. OF TIMES	
MEAN	MEDIAN	MEAN	50	90	95	98	99	1-HR		24-HR		DEVIATION	VALID DATA	ABOVE	LIMIT	LEVEL
14	15	20	15	46	55	64	75	0	-	111	2	-	53	3	100	0

NOTES: 1. FLAGS FOR INVALID DATA :
D: DYNAMIC CALIBRATION
T: TELEMETRY/DATALOGGR FAULT
M: MAINTENANCE OR ANALYZER FAULT
P: POWER FAILURE

THE HONGKONG ELECTRIC COMPANY, LTD.
AIR QUALITY DATA MONTHLY TIME SERIES REPORT
MONTH: NOVEMBER

STATION : VICTORIA PEAK
POLLUTANT : SULPHUR DIOXIDE

YEAR : 2015
UNIT : MICROGRAMS/CUBIC METER

DAY	1	2	3	4	5	6	7	8	9	10	11	12	13	14	15	16	17	18	19	20	21	22	23	24	MEAN
1	1	2	1	1	2	2	2	4	5	3	5	3	4	2	2	2	2	2	3	3	6	4	4	4	3
2	4	3	2	3	3	3	3	4	4	5	4	4	3	3	3	4	4	3	4	4	7	6	5	5	4
3	5	5	5	5	4	4	4	5	5	5	5	6	6	5	5	5	5	5	6	6	6	6	5	4	5
4	5	4	4	4	6	6	6	7	7	8	7	4	3	4	4	5	5	5	5	5	6	6	4	4	5
5	4	3	4	3	3	3	3	3	3	6	5	4	5	5	5	4	5	4	4	4	3	3	2	2	4
6	1	0	0	0	0	0	0	0	0	0	0	0	0	1	1	1	1	1	1	1	0	2	0	1	0
7	1	0	1	1	1	1	1	1	1	1	1	1	2	2	2	2	2	1	1	1	1	1	1	0	1
8	0	1	0	0	0	0	1	0	0	0	0	1	0	0	0	0	0	0	0	0	0	0	0	0	0
9	0	1	1	1	1	0	0	0	1	2	2	7	16	13	6	6	5	5	3	1	1	2	1	3	3
10	3	2	1	1	0	0	0	1	1	1	1	1	1	2	2	1	1	1	1	1	1	1	0	0	1
11	1	1	0	0	0	0	0	0	0	0	1	1	1	2	2	2	2	2	1	1	1	1	1	1	1
12	0	0	0	0	0	1	0	0	0	0	0	0	0	1	1	0	0	0	0	0	0	0	0	0	0
13	0	0	0	0	0	1	0	0	0	1	1	1	1	1	1	1	3	3	2	1	2	1	1	0	1
14	1	1	1	2	1	2	2	4	5	9	8	7	5	3	3	3	2	2	2	2	2	1	2	2	3
15	1	1	1	1	1	1	1	1	1	1	1	1	1	1	1	0	1	1	1	1	1	1	1	0	1
16	0	0	0	0	0	0	0	0	0	1	1	1	1	1	1	1	1	1	1	1	1	1	0	0	1
17	0	0	0	0	0	0	0	0	0	0	1	1	1	1	1	1	1	1	1	1	1	0	0	0	0
18	0	0	0	0	0	0	0	0	1	2	1	2	1	1	5	8	19	9	9	13	14	10	8	11	5
19	10	6	13	3	3	2	2	2	2	1	1	1	0	0	0	1	1	1	1	1	0	0	1	1	2
20	1	1	1	2	2	1	1	0	0	0	0	0	0	0	0	0	1	1	2	1	1	1	1	1	1
21	2	3	2	2	3	3	3	4	4	4	5	6	5	6	6	6	4	3	3	2	3	2	2	3	4
22	3	3	2	3	3	3	4	4	5	5	5	4	3	2	3	5	5	4	3	4	3	3	3	2	4
23	2	2	2	1	2	1	1	2	4	3	4	3	6	10	12	25	13	8	6	4	4	4	2	2	5
24	2	2	2	2	1	2	1	1	2	2	2	2	2	3	4	4	4	4	3	3	3	2	2	2	2
25	2	2	2	2	2	2	1	2	5	5	4	4	4	4	4	4	5	6	6	8	5	4	3	2	4
26	2	3	2	2	3	3	2	3	5	4	3	4	4	3	4	4	5	6	6	8	6	5	5	6	4
27	5	4	4	4	5	4	4	5	5	5	5	5	5	5	5	4	4	4	3	3	3	3	3	2	4
28	2	2	2	2	3	4	4	4	6	6	6	5	3	3	4	4	4	4	5	6	5	5	3	6	4
29	4	3	3	2	2	1	2	3	4	6	13	8	10	12	13	14	19	16	30	32	28	27	18	20	12
30	17	12	16	15	13	12	11	12	16	19	15	12	15	29	13	10	8	5	5	4	4	4	4	4	11

MONTHLY STATISTICS:

GEOM	ARITH-----PERCENTILES-----										RANGE-----		STN GEOM	PERCENT	NO. OF TIMES	
MEAN	MEDIAN	MEAN	50	90	95	98	99	1-HR		24-HR		DEVIATION	VALID DATA	ABOVE	LIMIT LEVEL	
3	2	3	2	6	11	16	19	0	-	32	0	-	12	2	100	0

- NOTES: 1. FLAGS FOR INVALID DATA :
- D: DYNAMIC CALIBRATION
 - T: TELEMETRY/DATALOGGR FAULT
 - M: MAINTENANCE OR ANALYZER FAULT
 - P: POWER FAILURE

THE HONGKONG ELECTRIC COMPANY, LTD.
AIR QUALITY DATA MONTHLY TIME SERIES REPORT
MONTH: NOVEMBER

STATION : VICTORIA PEAK
POLLUTANT : NITROGEN DIOXIDE

YEAR : 2015
UNIT : MICROGRAMS/CUBIC METER

DAY	1	2	3	4	5	6	7	8	9	10	11	12	13	14	15	16	17	18	19	20	21	22	23	24	MEAN
1	8	16	15	14	15	16	23	33	39	48	50	42	45	29	25	29	36	46	50	60	72	55	54	51	36
2	41	29	23	19	15	22	25	34	49	63	55	39	37	34	34	50	62	62	74	61	62	60	61	39	44
3	28	20	18	15	11	13	16	24	29	36	35	23	19	32	43	47	66	28	21	35	18	25	13	10	26
4	10	9	8	7	8	8	11	24	42	48	37	27	17	34	44	61	75	92	39	21	12	21	12	10	28
5	7	M	4	3	2	4	8	16	23	26	23	16	13	17	10	11	16	10	7	4	3	1	1	4	10
6	2	0	0	0	0	0	0	1	4	4	2	5	2	2	5	4	7	8	6	5	0	4	1	2	3
7	1	1	1	0	0	0	2	2	6	10	12	15	7	13	11	9	12	6	0	0	0	0	1	1	5
8	0	4	0	0	0	0	2	0	0	0	1	13	0	0	0	0	3	2	6	11	2	0	0	0	2
9	1	10	5	1	1	0	1	10	31	39	33	31	24	17	14	20	18	44	60	16	19	4	7	7	17
10	3	2	0	0	0	0	2	4	16	15	12	10	5	5	9	9	7	13	12	8	5	3	3	1	6
11	0	0	0	0	0	1	1	4	8	11	16	12	6	9	9	9	9	4	0	1	0	1	3	1	4
12	0	0	0	0	0	0	0	4	7	9	8	6	4	8	10	10	9	6	3	2	0	2	1	2	4
13	1	0	0	0	0	0	0	1	15	18	18	15	5	19	24	16	49	75	54	55	64	41	18	18	21
14	20	26	26	14	9	30	16	12	39	77	82	74	42	38	32	28	30	21	11	32	7	7	5	3	28
15	3	0	0	0	0	0	0	1	1	2	2	1	0	2	1	1	2	0	0	1	1	0	0	0	1
16	0	0	0	0	0	0	0	2	15	17	16	9	2	12	9	12	13	5	0	0	0	0	0	1	5
17	0	0	0	0	0	0	0	1	12	11	8	9	2	5	10	10	6	20	20	10	4	0	1	1	5
18	0	0	3	1	5	5	8	19	28	46	39	19	18	22	25	28	39	52	76	80	79	67	47	77	33
19	76	M	71	27	22	8	14	21	15	14	13	16	4	5	7	9	8	9	7	6	7	7	8	7	17
20	2	0	0	1	5	0	4	5	7	12	9	13	8	14	9	8	13	11	11	14	16	12	14	12	8
21	6	5	2	1	2	2	5	7	12	17	20	23	8	13	22	21	31	20	14	6	5	6	5	10	11
22	5	2	3	1	1	5	10	17	17	21	12	3	2	1	2	7	12	17	7	7	8	4	5	8	7
23	3	1	0	1	2	3	12	29	29	40	37	39	27	28	28	39	28	39	85	30	7	6	1	4	22
24	1	1	0	0	1	4	5	10	20	21	13	7	9	10	12	23	25	15	11	16	13	7	13	14	10
25	9	6	7	8	10	5	15	26	49	39	35	30	27	31	36	45	43	41	34	57	46	37	36	24	29
26	19	14	10	7	12	11	13	26	57	60	50	37	30	32	33	44	44	68	54	68	57	56	31	30	36
27	32	18	7	6	5	9	20	36	33	30	14	20	18	31	30	36	34	29	11	9	11	11	3	3	19
28	1	1	3	2	1	3	6	9	19	30	27	26	10	11	13	23	21	15	8	11	6	4	2	7	11
29	6	3	3	1	5	4	5	11	12	19	37	39	45	62	55	48	51	62	69	71	107	155	135	118	47
30	127	107	64	82	75	75	59	51	85	110	95	61	70	99	39	30	21	14	11	8	8	10	12	10	55

MONTHLY STATISTICS:

GEOM	ARITH-----PERCENTILES-----								-----RANGE-----				STN GEOM	PERCENT	NO. OF TIMES	
MEAN	MEDIAN	MEAN	50	90	95	98	99	1-HR	24-HR	DEVIATION	VALID DATA	ABOVE	LIMIT	LEVEL		
12	10	18	10	49	64	80	98	0	-	155	1	-	55	3	100	0

NOTES: 1. FLAGS FOR INVALID DATA :
D: DYNAMIC CALIBRATION
T: TELEMETRY/DATALOGGR FAULT
M: MAINTENANCE OR ANALYZER FAULT
P: POWER FAILURE

THE HONGKONG ELECTRIC COMPANY, LTD.
AIR QUALITY DATA MONTHLY TIME SERIES REPORT

STATION : VICTORIA ROAD SUBSTATION
POLLUTANT : SULPHUR DIOXIDE

MONTH: NOVEMBER

YEAR : 2015

UNIT : MICROGRAMS/CUBIC METER

DAY	1	2	3	4	5	6	7	8	9	10	11	12	13	14	15	16	17	18	19	20	21	22	23	24	MEAN
1	0	1	0	0	1	1	1	1	5	3	2	1	1	0	0	1	1	1	1	1	2	2	2	2	1
2	2	1	1	1	1	2	1	1	2	5	3	3	3	8	2	5	7	1	1	1	3	3	2	3	3
3	2	2	2	2	1	2	2	2	2	3	2	2	2	2	2	2	2	3	3	3	3	3	2	3	2
4	3	3	3	3	4	4	4	4	5	5	4	1	1	2	2	3	8	3	3	3	3	4	4	2	3
5	2	2	2	1	1	1	1	1	1	3	2	1	2	2	2	2	2	2	1	1	0	1	0	1	1
6	0	0	0	0	0	0	0	0	0	0	0	0	0	0	1	0	0	0	0	0	0	0	0	1	0
7	0	0	0	0	0	0	1	1	0	0	0	0	1	0	0	0	0	0	0	0	0	0	0	0	0
8	0	1	0	0	0	0	0	0	0	0	0	1	0	0	0	0	0	1	0	0	0	0	0	1	0
9	1	5	22	11	4	2	3	5	14	28	18	13	11	11	7	20	17	8	2	1	0	1	0	1	9
10	1	0	0	0	0	0	0	0	0	0	0	0	0	0	0	0	0	0	0	0	0	0	0	0	0
11	0	0	0	0	0	0	0	0	0	0	0	0	0	0	0	1	1	0	0	0	0	0	0	1	0
12	0	0	0	0	0	0	0	0	0	0	0	0	0	0	0	0	0	0	0	0	0	0	0	0	0
13	0	0	0	0	0	0	0	0	0	0	0	0	0	0	0	11	8	3	4	0	4	5	4	2	2
14	4	6	9	4	3	4	3	4	13	12	11	7	21	36	24	3	2	2	0	1	1	1	1	1	7
15	0	0	0	0	0	0	0	0	0	0	0	0	0	0	0	0	0	0	0	0	0	0	0	0	0
16	0	0	0	0	0	0	0	0	0	0	0	0	0	0	0	0	0	0	0	0	0	0	0	1	0
17	0	0	0	0	0	0	0	0	0	0	0	0	0	0	0	0	0	1	0	0	0	0	0	1	0
18	0	0	0	0	0	0	4	5	13	53	13	5	3	5	14	37	31	21	8	8	6	20	17	7	11
19	11	18	11	8	5	2	3	2	2	1	0	0	0	0	0	0	0	0	1	0	0	0	0	1	3
20	0	0	1	2	2	1	1	0	0	0	0	0	0	0	0	0	0	0	0	0	1	1	1	2	1
21	1	2	2	1	1	2	2	3	3	3	3	4	5	4	4	4	3	2	2	2	2	1	2	2	3
22	1	1	1	1	2	2	2	3	4	2	2	2	2	1	1	2	4	2	1	2	2	1	2	1	2
23	1	1	1	1	1	1	1	1	3	2	5	13	8	16	17	15	10	4	3	3	2	2	1	2	5
24	1	1	1	1	1	1	0	0	1	1	1	1	1	2	3	3	3	2	2	2	1	1	1	1	1
25	1	1	1	1	1	0	0	1	2	3	2	2	2	1	3	3	4	4	4	4	3	3	2	2	2
26	1	1	1	1	1	1	1	2	3	2	2	2	2	1	2	D	2	3	3	4	3	3	3	4	2
27	3	2	2	2	3	2	2	2	3	3	2	3	3	2	2	2	2	2	1	1	1	1	1	2	2
28	2	2	2	2	2	3	3	3	4	4	4	3	2	2	2	2	2	3	3	4	4	4	3	4	3
29	2	2	1	1	1	1	1	1	4	6	6	14	9	14	10	12	M	9	15	16	21	16	12	13	8
30	11	11	14	12	9	9	12	13	13	14	22	21	21	17	7	5	4	3	2	2	2	2	2	2	10

MONTHLY STATISTICS:

GEOM	ARITH-----PERCENTILES-----										RANGE-----		STN GEOM	PERCENT	NO. OF TIMES	
MEAN	MEDIAN	MEAN	50	90	95	98	99	1-HR	24-HR	DEVIATION	VALID DATA	ABOVE	LIMIT	LEVEL		
3	1	3	1	7	13	19	22	0	-	53	0	-	11	2	100	0

- NOTES: 1. FLAGS FOR INVALID DATA :
- D: DYNAMIC CALIBRATION
 - T: TELEMETRY/DATALOGGR FAULT
 - M: MAINTENANCE OR ANALYZER FAULT
 - P: POWER FAILURE

THE HONGKONG ELECTRIC COMPANY, LTD.
AIR QUALITY DATA MONTHLY TIME SERIES REPORT
MONTH: NOVEMBER

STATION : VICTORIA ROAD SUBSTATION
POLLUTANT : NITROGEN DIOXIDE

YEAR : 2015
UNIT : MICROGRAMS/CUBIC METER

DAY	1	2	3	4	5	6	7	8	9	10	11	12	13	14	15	16	17	18	19	20	21	22	23	24	MEAN
1	1	4	5	4	6	7	12	23	32	29	30	21	21	16	13	15	21	27	26	33	45	40	32	42	21
2	28	17	12	13	8	18	24	29	40	40	35	30	33	36	29	35	41	50	58	47	55	59	50	38	34
3	23	13	8	4	2	3	8	17	20	18	19	11	10	15	18	26	37	21	17	18	14	14	9	7	15
4	7	M	3	3	3	4	8	19	24	24	16	12	9	12	33	39	47	51	33	22	15	13	13	12	18
5	6	3	2	1	0	1	7	13	14	16	13	11	8	8	10	15	17	14	14	11	7	5	3	5	9
6	2	0	0	0	0	0	4	11	8	8	3	2	1	3	7	8	9	13	14	10	10	11	9	6	6
7	2	0	0	0	0	0	4	5	5	6	4	5	6	5	5	7	6	7	8	5	4	3	2	2	4
8	0	2	0	0	0	1	3	3	3	3	3	6	3	3	2	2	8	19	30	22	19	13	11	7	7
9	6	21	36	29	20	9	25	22	20	31	29	14	10	7	10	21	24	27	30	29	14	5	5	5	19
10	3	2	0	0	0	0	4	8	8	6	5	5	5	5	6	8	9	9	10	6	5	3	3	4	5
11	1	1	1	0	1	1	6	11	9	8	8	9	9	7	9	11	9	7	8	7	6	3	4	5	6
12	1	1	0	0	0	1	4	9	10	8	7	7	7	7	7	9	10	11	8	6	5	4	5	5	6
13	3	0	0	0	0	0	3	8	7	8	5	5	5	5	7	40	50	52	51	36	53	54	43	47	20
14	51	48	46	41	39	37	41	42	39	44	51	52	56	60	50	20	30	28	27	37	24	17	13	13	38
15	8	3	0	0	0	0	0	1	2	3	2	2	2	2	2	2	4	4	2	2	1	2	1	2	2
16	0	0	0	0	0	0	5	9	7	8	9	8	7	8	10	13	15	13	10	9	5	4	4	6	6
17	2	1	0	0	0	0	5	8	11	10	8	6	6	2	6	9	11	30	19	14	10	6	18	13	8
18	12	M	1	1	1	3	23	37	22	26	11	7	5	4	18	32	48	55	61	59	57	52	56	54	28
19	50	44	43	43	41	23	23	33	16	10	5	5	5	3	7	11	11	10	11	8	8	6	5	7	18
20	1	0	0	1	3	2	7	12	10	11	7	8	12	9	9	15	13	13	12	9	9	6	9	8	8
21	5	4	1	1	1	2	6	6	8	11	13	16	8	14	18	17	23	17	14	7	6	8	5	9	9
22	5	3	3	3	2	5	11	14	15	16	10	8	8	5	8	13	22	19	13	13	11	8	7	10	10
23	5	3	2	2	3	7	22	45	29	29	29	30	13	30	28	23	26	19	46	30	13	11	9	11	19
24	6	3	2	2	2	4	6	10	12	14	11	9	9	10	11	22	23	23	20	16	13	14	12	15	11
25	10	5	6	7	8	9	35	36	42	28	26	22	23	24	35	44	48	36	38	38	34	25	23	24	26
26	17	12	10	6	7	8	18	35	47	50	39	31	23	22	27	D	38	49	44	46	33	30	26	22	28
27	21	14	10	15	9	7	18	32	26	21	13	13	15	19	25	24	22	25	17	12	13	10	8	5	16
28	3	2	2	1	2	5	8	12	14	19	19	22	12	8	11	15	17	20	20	16	12	11	8	12	11
29	7	6	4	3	6	6	12	20	22	24	24	40	54	62	47	30	M	45	62	68	102	108	101	82	41
30	95	87	69	71	69	64	63	61	66	76	74	54	74	53	31	34	24	21	24	19	14	17	18	14	50

MONTHLY STATISTICS:

GEOM	ARITH-----PERCENTILES-----							-----RANGE-----					STN GEOM	PERCENT	NO. OF TIMES	
MEAN	MEDIAN	MEAN	50	90	95	98	99	1-HR	24-HR	DEVIATION	VALID DATA	ABOVE	LIMIT	LEVEL		
11	10	17	10	42	52	64	74	0	-	108	2	-	50	3	99	0

NOTES: 1. FLAGS FOR INVALID DATA :
D: DYNAMIC CALIBRATION
T: TELEMETRY/DATALOGGR FAULT
M: MAINTENANCE OR ANALYZER FAULT
P: POWER FAILURE

THE HONGKONG ELECTRIC COMPANY, LTD.
AIR QUALITY DATA MONTHLY TIME SERIES REPORT
MONTH: NOVEMBER

STATION : POK FU LAM
POLLUTANT : SULPHUR DIOXIDE

YEAR : 2015
UNIT : MICROGRAMS/CUBIC METER

DAY	1	2	3	4	5	6	7	8	9	10	11	12	13	14	15	16	17	18	19	20	21	22	23	24	MEAN
1	0	1	0	0	0	0	0	1	6	2	1	1	0	0	0	0	0	0	0	0	1	2	2	3	1
2	2	1	1	1	1	1	2	2	3	6	3	4	6	12	4	3	6	2	2	2	2	3	3	5	3
3	3	3	3	2	2	3	3	3	4	4	4	4	4	3	3	3	3	3	4	3	4	3	4	3	4
4	4	4	4	4	5	5	5	6	6	6	6	2	2	2	3	5	14	7	4	3	4	5	4	3	5
5	2	3	3	2	1	1	1	1	2	5	3	2	3	3	2	2	3	2	2	2	1	1	0	2	2
6	1	1	1	1	1	1	1	0	0	0	0	0	0	1	2	2	1	1	1	0	1	1	0	2	1
7	1	0	1	1	1	1	1	1	0	1	1	0	2	1	1	1	1	1	0	0	0	1	1	1	1
8	0	2	0	0	0	0	1	0	0	0	0	11	3	0	0	0	0	0	0	0	2	7	0	0	1
9	0	7	12	1	0	0	0	0	2	10	12	13	20	7	8	28	15	7	2	1	0	0	0	2	6
10	2	1	0	0	0	0	0	0	0	0	0	0	0	0	1	0	0	0	0	0	0	0	0	1	0
11	0	0	0	0	0	0	0	0	0	1	1	1	1	2	2	2	2	1	1	1	1	1	1	0	1
12	0	0	0	0	0	0	0	0	0	0	0	0	0	0	0	0	0	0	0	0	0	0	0	0	0
13	0	0	0	0	0	0	0	0	0	0	0	0	0	0	0	1	8	4	4	1	1	2	3	1	1
14	4	8	8	5	4	4	2	7	19	16	13	8	23	49	28	8	2	1	0	1	1	1	1	2	9
15	1	1	1	0	1	1	0	0	1	0	0	0	0	1	1	1	1	0	0	1	1	1	0	0	1
16	0	0	0	0	0	0	0	0	0	0	0	0	0	0	0	0	0	0	0	0	0	0	0	0	0
17	0	1	0	0	0	0	0	0	0	0	0	1	1	1	1	1	1	1	0	0	0	0	0	1	0
18	2	1	0	1	4	2	1	10	33	71	20	7	4	4	13	15	23	23	11	9	9	32	36	16	14
19	11	12	11	10	9	10	12	8	10	2	1	0	0	0	0	0	0	0	1	1	0	0	0	1	4
20	1	0	1	2	3	1	1	1	0	0	0	0	0	0	1	0	0	1	1	1	1	1	1	2	1
21	2	3	3	3	3	3	4	4	4	5	5	6	6	6	6	6	5	3	3	3	2	3	3	3	4
22	3	2	3	3	3	3	4	5	6	5	4	4	3	2	3	5	5	4	3	3	3	3	3	2	4
23	2	2	1	1	1	1	1	2	4	3	3	9	15	14	16	32	14	5	4	3	3	3	2	1	6
24	1	1	1	1	1	1	1	0	1	1	1	2	2	3	3	3	3	3	2	2	1	1	1	1	2
25	1	1	1	1	1	1	1	1	2	3	3	2	2	2	4	3	6	4	6	5	3	3	2	2	3
26	1	1	2	1	0	1	1	2	3	2	2	1	1	2	2	3	3	4	4	3	4	4	4	5	2
27	4	3	2	2	3	3	3	3	3	3	3	4	3	3	3	3	3	3	2	1	1	1	2	2	3
28	2	3	2	3	2	3	3	4	6	6	5	4	3	3	3	3	3	4	3	4	4	4	3	4	4
29	3	2	2	1	1	1	1	2	4	7	9	18	11	15	14	15	17	13	22	25	30	17	17	19	11
30	18	13	14	13	10	11	15	14	17	13	24	28	25	20	11	D	10	9	8	8	8	8	7	3	13

MONTHLY STATISTICS:

GEOM	ARITH-----PERCENTILES-----										RANGE-----		STN GEOM	PERCENT	NO. OF TIMES	
MEAN	MEDIAN	MEAN	50	90	95	98	99	1-HR		24-HR		DEVIATION	VALID DATA	ABOVE	LIMIT	LEVEL
3	2	3	2	9	15	23	28	0	-	71	0	-	14	3	100	0

- NOTES: 1. FLAGS FOR INVALID DATA :
- D: DYNAMIC CALIBRATION
 - T: TELEMETRY/DATALOGGR FAULT
 - M: MAINTENANCE OR ANALYZER FAULT
 - P: POWER FAILURE

THE HONGKONG ELECTRIC COMPANY, LTD.
AIR QUALITY DATA MONTHLY TIME SERIES REPORT
MONTH: NOVEMBER

STATION : POK FU LAM
POLLUTANT : NITROGEN DIOXIDE

YEAR : 2015
UNIT : MICROGRAMS/CUBIC METER

DAY	1	2	3	4	5	6	7	8	9	10	11	12	13	14	15	16	17	18	19	20	21	22	23	24	MEAN
1	13	13	12	14	15	19	18	35	45	41	41	35	33	26	23	25	30	38	37	40	57	51	47	59	32
2	47	28	23	22	16	27	32	43	53	52	46	50	51	54	45	46	68	87	87	75	97	89	68	71	53
3	21	24	16	11	10	10	12	20	25	31	21	25	21	18	25	28	42	44	32	34	38	27	21	15	24
4	14	12	10	9	10	11	16	29	35	35	30	25	21	23	40	47	63	60	66	37	19	26	26	20	29
5	12	10	8	7	7	8	12	18	22	23	27	23	24	25	15	23	27	20	23	17	14	9	10	16	17
6	13	8	6	7	6	6	10	14	16	18	12	13	11	11	14	19	21	26	27	16	12	13	9	9	13
7	8	8	8	7	5	6	10	11	12	14	12	16	18	14	15	14	19	20	14	12	10	14	15	9	12
8	8	M	6	6	5	4	11	10	6	6	9	23	18	13	12	12	16	21	36	42	28	18	40	5	15
9	20	41	36	9	10	8	10	18	29	44	43	26	26	13	17	33	35	41	53	53	40	25	20	17	28
10	14	11	5	5	6	7	9	12	22	24	17	17	13	12	16	19	19	25	24	22	16	13	12	9	15
11	7	8	7	7	6	7	11	14	17	15	20	20	16	14	15	20	16	14	13	12	10	10	13	10	13
12	7	6	6	6	6	M	8	15	16	14	13	11	13	13	14	18	21	14	14	14	10	12	11	9	12
13	8	6	4	4	4	5	5	8	13	14	12	10	11	12	14	38	67	71	68	57	59	66	54	68	28
14	68	65	60	60	59	53	49	56	54	56	60	67	77	89	61	40	41	51	37	52	39	28	25	22	53
15	15	9	6	6	5	6	6	7	9	8	8	7	7	8	7	7	10	9	8	9	8	8	8	6	8
16	5	4	3	4	3	3	6	12	14	11	10	9	9	8	8	8	15	16	13	9	7	5	7	5	8
17	4	4	3	3	3	2	5	11	15	15	12	10	11	13	13	16	18	28	19	12	14	7	14	13	11
18	18	10	11	17	25	19	18	33	39	45	28	15	11	12	22	25	55	73	74	74	71	67	70	68	38
19	68	62	58	57	54	53	54	42	33	20	14	20	13	13	19	21	26	29	27	24	23	21	20	14	33
20	14	8	6	7	10	8	12	23	25	26	23	17	15	23	19	17	17	21	30	30	19	17	11	13	17
21	13	10	8	7	8	9	12	14	17	23	22	17	19	25	25	28	33	29	29	23	16	14	15	12	18
22	10	M	10	8	8	11	11	15	16	16	16	14	13	10	13	21	26	29	17	15	18	13	15	14	15
23	11	8	7	6	7	8	17	45	55	60	42	41	41	33	34	48	41	40	71	57	23	14	13	13	31
24	11	8	9	7	7	9	11	13	20	20	21	16	17	16	22	32	39	41	28	32	29	20	20	17	19
25	16	13	11	9	11	9	18	45	52	43	34	31	31	29	36	50	58	42	53	52	50	40	35	36	34
26	29	21	19	15	15	18	30	53	62	64	58	45	35	35	42	43	58	61	71	68	49	47	32	28	42
27	25	19	18	34	30	23	31	36	28	32	22	16	16	20	18	25	28	31	34	24	17	18	15	13	24
28	11	8	9	11	9	9	13	22	33	32	31	21	22	20	25	31	36	42	33	40	24	19	13	17	22
29	16	16	14	13	16	13	18	23	23	31	33	55	68	70	63	44	53	60	81	110	161	166	142	121	59
30	130	106	90	94	91	88	84	78	85	101	109	95	91	83	47	D	23	27	32	20	18	19	29	15	68

MONTHLY STATISTICS:

GEOM	ARITH-----PERCENTILES-----										RANGE-----		STN GEOM	PERCENT	NO. OF TIMES	
MEAN	MEDIAN	MEAN	50	90	95	98	99	1-HR		24-HR		DEVIATION	VALID DATA	ABOVE	LIMIT	LEVEL
19	18	26	18	58	70	90	105	2	-	166	8	-	68	2	99	0

NOTES: 1. FLAGS FOR INVALID DATA :
D: DYNAMIC CALIBRATION
T: TELEMETRY/DATALOGGR FAULT
M: MAINTENANCE OR ANALYZER FAULT
P: POWER FAILURE

THE HONGKONG ELECTRIC COMPANY, LTD.
AIR QUALITY DATA MONTHLY TIME SERIES REPORT
MONTH: NOVEMBER

STATION : AP LEI CHAU
POLLUTANT : SULPHUR DIOXIDE

YEAR : 2015
UNIT : MICROGRAMS/CUBIC METER

DAY	1	2	3	4	5	6	7	8	9	10	11	12	13	14	15	16	17	18	19	20	21	22	23	24	MEAN
1	1	2	0	1	1	1	1	3	5	2	4	4	3	3	2	8	4	2	1	1	2	3	2	2	2
2	3	2	2	1	2	2	2	2	5	5	2	2	4	8	3	2	1	0	0	1	3	4	3	5	3
3	4	4	4	3	2	3	3	4	4	4	5	5	4	4	5	3	3	3	4	4	4	4	3	3	4
4	2	2	2	2	3	4	3	4	3	5	3	2	1	1	2	1	2	1	2	2	3	4	1	3	2
5	3	3	3	1	1	1	1	2	2	4	3	2	4	3	4	3	2	2	3	2	2	2	2	1	2
6	2	0	0	0	0	0	0	0	0	0	0	0	0	0	1	0	0	0	0	0	0	0	0	1	0
7	1	0	1	1	1	1	1	1	1	1	1	2	1	2	1	0	1	1	0	0	0	1	0	1	1
8	1	2	0	0	0	0	1	0	0	0	0	0	0	0	0	1	0	0	0	0	0	1	0	1	0
9	0	0	0	0	0	0	0	0	0	5	37	6	4	15	2	3	1	0	0	0	0	1	0	3	3
10	3	1	0	0	0	0	0	0	0	0	0	0	1	0	1	1	1	1	2	1	1	0	0	1	1
11	0	0	0	0	0	0	0	0	0	0	0	M	0	0	1	1	0	0	0	0	0	0	0	1	0
12	0	0	0	0	0	0	0	0	0	0	0	0	0	0	0	0	0	0	0	0	0	0	0	1	0
13	0	0	0	0	0	0	0	0	0	0	0	0	0	0	0	3	4	6	2	0	1	0	0	1	1
14	0	0	8	4	2	3	3	12	20	17	14	10	31	6	5	3	5	2	0	2	1	1	1	2	6
15	1	1	1	0	1	1	1	1	1	1	0	0	1	1	0	1	0	0	0	1	1	1	1	0	1
16	0	0	0	0	0	0	0	0	0	0	0	0	1	0	0	0	0	0	0	0	0	0	0	1	0
17	0	1	0	0	0	0	0	0	1	1	0	1	2	1	1	1	0	0	0	0	0	0	0	1	0
18	0	0	0	0	0	0	7	0	1	23	0	0	0	1	6	43	43	7	2	5	9	25	21	4	8
19	12	8	4	5	2	2	2	1	1	0	0	0	0	0	0	0	0	0	0	0	0	0	0	1	2
20	0	0	1	1	2	0	1	0	0	0	0	0	0	0	0	D	D	2	1	0	0	1	0	2	1
21	2	4	2	1	2	2	2	4	3	3	4	6	6	6	6	5	4	2	3	1	1	1	1	2	3
22	2	2	2	2	2	2	3	3	4	4	4	6	11	15	8	7	8	4	1	4	3	2	2	2	4
23	2	1	1	2	2	1	1	2	4	3	3	2	3	5	6	2	1	2	1	2	3	2	0	1	2
24	1	1	2	1	1	1	0	0	1	1	2	2	2	3	3	3	4	1	1	1	1	1	1	2	2
25	2	2	1	1	2	1	1	2	4	5	4	4	4	3	4	9	3	5	4	5	4	4	2	2	3
26	3	1	2	1	2	2	3	2	6	5	3	3	4	3	3	4	3	3	2	4	4	3	3	4	3
27	4	3	3	3	4	2	4	3	4	4	5	4	5	4	3	2	5	2	0	1	1	2	2	2	3
28	2	1	2	2	2	3	4	4	4	5	5	4	3	3	4	5	4	4	3	5	5	4	4	4	4
29	1	1	1	0	0	0	0	1	3	8	18	19	16	17	11	13	25	8	17	18	30	23	28	25	12
30	22	20	18	16	12	11	14	14	15	44	29	7	13	9	5	4	2	1	1	1	1	1	1	2	11

MONTHLY STATISTICS:

GEOM	ARITH-----PERCENTILES-----										RANGE-----		STN GEOM	PERCENT	NO. OF TIMES		
MEAN	MEDIAN	MEAN	50	90	95	98	99	1-HR		24-HR		DEVIATION	VALID DATA	ABOVE	LIMIT	LEVEL	
3	1	3	1	5	12	21	28	0	-	44	0	-	12	2	100	0	

- NOTES: 1. FLAGS FOR INVALID DATA :
D: DYNAMIC CALIBRATION
T: TELEMETRY/DATALOGGR FAULT
M: MAINTENANCE OR ANALYZER FAULT
P: POWER FAILURE
2. BRACKETED READINGS EXCEED 24-HR OBJECTIVE 125

THE HONGKONG ELECTRIC COMPANY, LTD.
AIR QUALITY DATA MONTHLY TIME SERIES REPORT
MONTH: NOVEMBER

STATION : AP LEI CHAU
POLLUTANT : NITROGEN DIOXIDE

YEAR : 2015
UNIT : MICROGRAMS/CUBIC METER

DAY	1	2	3	4	5	6	7	8	9	10	11	12	13	14	15	16	17	18	19	20	21	22	23	24	MEAN
1	3	5	7	8	9	11	15	17	27	30	37	32	27	26	19	27	29	38	38	45	51	59	49	50	27
2	35	26	18	15	11	17	31	33	37	43	30	13	17	20	21	11	18	25	24	40	63	61	37	30	28
3	16	12	11	7	5	6	9	12	13	12	11	4	2	5	9	14	15	9	4	9	5	6	4	5	9
4	4	M	3	3	4	3	7	15	18	17	8	7	7	3	5	9	13	15	8	6	4	7	6	5	8
5	3	3	4	2	1	3	7	12	12	10	6	6	3	2	5	4	6	5	5	3	2	4	4	5	5
6	6	1	1	2	1	1	1	2	3	4	2	3	2	1	3	3	4	6	7	6	5	6	8	5	3
7	4	4	4	3	2	2	5	5	5	4	M	8	5	3	3	5	5	10	4	5	6	6	4	14	5
8	15	17	10	11	8	9	12	9	8	8	8	9	7	9	8	9	16	18	9	17	21	23	27	16	13
9	16	10	12	6	6	7	11	24	12	16	46	17	9	12	6	13	10	12	11	20	14	8	7	10	13
10	5	3	0	0	1	2	3	4	4	3	4	5	3	3	3	5	5	6	4	4	4	3	2	6	3
11	4	4	3	4	4	5	5	7	6	7	M	M	2	4	2	2	0	0	0	0	0	0	0	4	3
12	3	2	3	3	3	4	5	5	6	6	7	6	7	6	9	10	10	9	7	5	6	6	4	1	6
13	3	1	0	0	0	1	0	2	2	4	3	2	5	6	7	15	58	68	63	55	58	41	20	27	18
14	45	43	58	54	55	52	51	51	50	54	62	64	61	15	5	5	6	7	5	6	3	3	9	3	32
15	0	0	0	0	0	0	0	0	1	2	1	1	1	4	2	0	2	0	0	0	0	0	0	0	1
16	0	0	0	0	0	0	1	3	1	1	0	0	0	0	0	0	0	0	0	0	0	0	0	0	0
17	0	0	0	0	0	0	0	1	1	0	0	0	0	0	0	0	2	0	1	10	8	15	8	2	
18	1	M	7	3	6	6	23	26	12	23	3	0	0	1	9	35	39	12	3	21	62	61	60	35	19
19	50	45	47	46	23	15	19	23	5	0	1	1	1	0	2	4	3	2	4	3	2	3	4	4	13
20	4	2	0	0	0	0	0	0	3	6	0	2	2	7	3	D	D	6	7	7	8	8	8	8	4
21	7	7	6	7	6	8	11	9	9	11	15	16	12	14	16	18	17	22	10	7	6	6	6	8	11
22	7	5	5	5	5	8	11	16	14	13	11	9	10	8	6	7	10	11	7	10	6	4	7	6	8
23	6	4	3	4	6	10	23	37	27	29	16	16	14	13	17	12	10	16	13	10	5	8	4	4	13
24	4	3	5	3	4	8	10	14	13	13	11	6	5	5	6	12	12	9	7	10	10	7	11	12	8
25	10	6	6	15	9	10	13	35	45	42	32	33	28	28	47	57	43	42	34	42	48	40	34	30	30
26	26	22	18	17	17	17	25	41	62	67	57	48	43	39	39	41	51	67	73	65	59	48	40	35	42
27	34	29	14	13	16	18	24	26	23	18	11	14	14	13	14	16	20	21	9	8	8	8	9	6	16
28	7	7	7	7	7	8	9	13	14	16	14	13	13	7	7	10	11	12	16	17	10	9	7	14	11
29	10	10	9	7	8	9	14	22	21	24	36	43	61	67	39	33	60	44	59	75	129	144	146	125	50
30	133	123	94	92	92	88	84	80	84	97	64	24	35	23	11	11	10	10	13	15	16	20	21	11	52

MONTHLY STATISTICS:

GEOM	ARITH-----PERCENTILES-----								-----RANGE-----				STN GEOM	PERCENT	NO. OF TIMES	
MEAN	MEDIAN	MEAN	50	90	95	98	99	1-HR	24-HR	DEVIATION	VALID DATA	ABOVE	LIMIT	LEVEL		
10	8	15	8	43	59	75	94	0	-	146	0	-	52	3	99	0

- NOTES: 1. FLAGS FOR INVALID DATA :
- D: DYNAMIC CALIBRATION
 - T: TELEMETRY/DATALOGGR FAULT
 - M: MAINTENANCE OR ANALYZER FAULT
 - P: POWER FAILURE

THE HONGKONG ELECTRIC COMPANY, LTD.
AIR QUALITY DATA MONTHLY TIME SERIES REPORT
MONTH: NOVEMBER

STATION : CHEUNG CHAU
POLLUTANT : SULPHUR DIOXIDE

YEAR : 2015
UNIT : MICROGRAMS/CUBIC METER

DAY	1	2	3	4	5	6	7	8	9	10	11	12	13	14	15	16	17	18	19	20	21	22	23	24	MEAN	
1	2	2	3	2	1	0	1	1	0	0	0	0	1	0	1	3	2	3	2	3	4	4	3	3	2	
2	1	0	0	0	0	0	0	0	1	1	1	1	1	3	4	4	4	3	3	3	2	3	2	2	2	
3	3	3	4	4	3	4	2	2	6	6	4	9	7	9	6	9	8	4	4	8	5	6	4	4	5	
4	3	2	4	2	3	5	5	4	5	5	5	3	2	2	2	4	4	3	3	2	5	4	7	4	4	
5	3	3	2	3	3	1	1	1	3	4	5	3	3	4	5	4	3	4	4	3	2	3	3	1	3	
6	1	1	1	0	0	0	0	1	1	0	0	3	3	1	1	1	2	1	3	1	1	2	3	3	1	
7	3	1	0	2	2	1	2	1	1	5	3	5	1	1	1	0	2	2	1	1	2	1	1	2	2	
8	2	4	2	2	1	2	4	2	1	1	2	1	7	5	7	3	1	4	7	2	2	2	3	5	3	
9	2	1	2	3	5	3	1	3	5	7	2	9	6	5	5	20	16	13	11	9	5	4	3	1	6	
10	2	4	2	2	0	0	0	0	0	0	2	10	8	1	2	2	4	2	6	5	5	2	2	1	0	3
11	0	0	0	1	0	0	1	0	0	1	5	5	6	3	1	1	0	0	1	1	0	0	0	2	1	
12	0	0	0	0	0	0	0	1	2	1	0	0	1	1	0	3	4	0	0	0	1	1	1	0	1	
13	0	0	0	0	0	0	1	0	0	0	0	0	0	0	1	3	2	0	0	0	0	0	1	0	0	
14	0	0	0	0	2	3	3	2	4	5	6	8	7	10	7	5	2	2	1	2	1	4	2	2	3	
15	1	1	1	2	0	0	0	0	0	1	1	2	1	1	1	0	0	0	0	0	0	0	1	0	1	
16	0	0	0	0	0	0	0	0	2	2	2	2	1	1	1	1	1	1	0	0	0	1	1	0	1	
17	0	1	1	0	0	0	0	0	1	3	2	0	2	1	2	2	2	2	1	0	0	1	1	1	1	
18	0	1	0	1	1	1	2	4	9	12	7	3	3	6	12	8	18	15	15	14	13	13	15	10	8	
19	11	12	8	8	7	4	3	4	6	3	3	D	D	D	2	10	6	8	4	3	4	4	5	2	6	
20	2	2	3	9	4	4	4	6	12	8	2	3	2	6	15	7	3	2	6	6	7	5	3	4	5	
21	4	5	5	3	2	3	4	4	6	12	11	7	9	13	8	6	8	8	6	6	8	6	6	4	6	
22	3	3	5	3	3	2	3	7	9	7	5	4	6	4	5	7	6	4	3	4	4	3	4	4	5	
23	2	3	2	2	3	2	2	3	6	8	6	5	8	4	11	18	17	15	8	6	5	4	6	3	6	
24	3	3	3	6	3	2	3	4	3	3	4	10	9	4	5	5	4	3	3	6	4	3	2	2	4	
25	3	3	3	2	3	4	4	4	6	4	7	6	4	4	5	6	3	3	3	6	5	4	5	3	4	
26	2	1	1	1	1	1	1	1	2	2	2	3	3	2	2	2	2	2	3	3	3	2	2	3	2	
27	4	4	3	3	3	5	4	4	6	5	7	6	4	5	3	3	3	4	5	4	2	5	6	3	4	
28	4	5	3	4	3	3	4	4	8	7	14	12	8	6	6	4	4	5	6	8	5	5	5	4	6	
29	6	5	5	4	2	2	4	3	5	7	8	10	8	6	7	7	8	6	5	4	6	9	10	9	6	
30	13	13	14	16	15	15	13	14	19	12	13	16	12	10	8	7	6	5	4	4	7	5	5	4	10	

MONTHLY STATISTICS:

GEOM	ARITH-----PERCENTILES-----										RANGE-----		STN GEOM	PERCENT	NO. OF TIMES	
MEAN	MEDIAN	MEAN	50	90	95	98	99	1-HR		24-HR		DEVIATION	VALID DATA	ABOVE	LIMIT	LEVEL
3	3	4	3	8	11	15	16	0	-	20	0	-	10	2	100	0

- NOTES: 1. FLAGS FOR INVALID DATA :
- D: DYNAMIC CALIBRATION
 - T: TELEMETRY/DATALOGGR FAULT
 - M: MAINTENANCE OR ANALYZER FAULT
 - P: POWER FAILURE

THE HONGKONG ELECTRIC COMPANY, LTD.
AIR QUALITY DATA MONTHLY TIME SERIES REPORT
MONTH: NOVEMBER

STATION : CHEUNG CHAU
POLLUTANT : NITROGEN DIOXIDE

YEAR : 2015
UNIT : MICROGRAMS/CUBIC METER

DAY	1	2	3	4	5	6	7	8	9	10	11	12	13	14	15	16	17	18	19	20	21	22	23	24	MEAN
1	12	14	38	37	28	26	24	21	18	27	23	23	23	22	28	31	32	39	46	45	49	44	41	38	30
2	31	21	19	16	13	15	21	26	28	35	32	36	40	39	47	47	61	66	69	72	60	72	73	34	41
3	37	48	52	48	38	41	18	13	18	19	14	19	12	16	10	17	19	8	8	21	20	19	14	11	23
4	11	M	13	8	9	19	18	16	41	29	33	22	9	5	3	9	10	9	9	6	12	8	21	17	15
5	17	18	5	9	17	8	9	8	16	17	29	12	3	5	8	9	6	8	10	7	7	9	10	6	11
6	6	6	5	4	6	2	5	7	6	4	5	11	10	5	4	2	6	9	13	10	8	7	9	10	7
7	13	10	11	16	11	10	20	12	13	22	17	24	8	1	2	1	5	15	8	6	9	7	9	10	11
8	11	17	10	8	4	12	14	6	3	3	4	2	9	5	7	7	4	22	23	8	6	13	23	15	10
9	12	18	46	42	49	40	19	40	36	27	30	25	8	5	8	23	23	27	48	31	14	11	11	14	25
10	14	13	11	25	14	7	13	19	16	21	25	23	9	8	9	17	11	24	23	21	22	24	21	12	17
11	8	23	30	32	18	18	29	18	12	13	21	19	19	10	5	2	2	2	5	15	9	6	13	32	15
12	13	4	4	5	7	6	15	15	21	9	8	6	10	12	9	17	25	8	10	15	19	18	17	7	12
13	6	5	2	4	4	4	4	3	3	5	2	2	0	2	20	53	52	49	53	46	40	50	46	30	20
14	37	36	47	54	54	55	51	42	38	40	50	64	64	52	24	12	7	5	8	8	5	14	9	10	33
15	6	4	3	7	3	3	2	5	7	8	5	7	7	6	4	4	7	5	5	4	5	5	7	3	5
16	4	4	4	5	1	2	6	7	8	7	5	6	3	1	1	1	4	3	3	3	3	6	7	6	4
17	4	7	6	3	6	3	3	4	7	9	3	0	2	1	3	3	4	7	7	5	4	6	5	9	5
18	5	M	5	5	21	37	48	40	41	35	13	5	7	8	12	9	32	54	58	57	56	63	67	57	32
19	55	48	46	44	43	20	30	41	21	4	6	D	D	D	6	11	9	15	15	11	12	14	15	13	23
20	10	10	10	19	11	10	7	12	18	12	8	9	8	12	17	14	5	6	12	10	13	10	7	12	11
21	12	14	9	6	6	11	11	11	12	18	17	15	11	19	17	12	17	25	16	16	25	18	15	16	15
22	8	7	7	7	6	19	24	41	48	44	20	13	8	5	6	9	8	9	8	10	9	8	15	15	15
23	5	6	7	7	8	18	28	45	44	39	36	37	21	7	16	33	35	40	22	17	7	8	14	6	21
24	8	6	6	12	4	17	20	12	10	16	13	12	10	4	5	6	8	7	6	14	11	8	9	8	10
25	10	10	8	7	23	37	49	51	49	36	45	32	31	32	38	41	35	37	36	37	45	40	38	34	33
26	34	23	16	16	15	16	21	28	35	51	40	34	32	33	32	27	32	45	52	42	43	36	29	25	32
27	26	27	27	23	19	21	24	35	46	28	18	15	22	24	20	19	18	14	14	10	8	13	13	12	21
28	17	15	11	11	12	14	14	15	21	16	18	27	24	9	8	5	6	10	14	17	10	11	10	12	14
29	16	14	15	13	12	19	20	25	29	46	34	39	33	19	14	14	18	19	21	21	26	78	95	96	31
30	107	103	99	94	92	86	84	76	75	69	80	78	45	15	12	9	10	10	11	14	32	53	82	46	58

MONTHLY STATISTICS:

GEOM	ARITH-----PERCENTILES-----							-----RANGE-----				STN GEOM	PERCENT	NO. OF TIMES		
MEAN	MEDIAN	MEAN	50	90	95	98	99	1-HR		24-HR		DEVIATION	VALID DATA	ABOVE LIMIT LEVEL		
14	14	20	14	45	53	74	86	0	-	107	4	-	58	2	99	0

NOTES: 1. FLAGS FOR INVALID DATA :
D: DYNAMIC CALIBRATION
T: TELEMETRY/DATALOGGR FAULT
M: MAINTENANCE OR ANALYZER FAULT
P: POWER FAILURE

THE HONGKONG ELECTRIC COMPANY, LTD.
 AIR QUALITY DATA MONTHLY TIME SERIES REPORT
 MONTH: DECEMBER

STATION : VICTORIA PEAK
 POLLUTANT : SULPHUR DIOXIDE

YEAR : 2015
 UNIT : MICROGRAMS/CUBIC METER

DAY	1	2	3	4	5	6	7	8	9	10	11	12	13	14	15	16	17	18	19	20	21	22	23	24	MEAN
1	3	3	2	2	2	2	2	2	2	2	2	3	3	4	4	3	3	3	2	3	4	4	4	2	3
2	3	2	2	2	2	2	3	2	3	3	2	3	2	3	5	13	7	4	3	3	3	5	3	3	3
3	2	2	2	3	2	3	3	3	10	11	10	4	3	4	4	3	3	1	1	1	1	1	2	1	3
4	1	1	1	2	2	1	1	1	2	2	3	3	2	2	2	2	2	0	1	1	1	1	1	4	2
5	5	5	4	3	4	4	3	3	3	2	2	2	1	1	2	3	3	3	2	3	2	2	1	1	3
6	2	3	2	1	1	2	1	1	1	1	1	5	3	2	1	1	1	2	2	3	2	2	2	3	2
7	2	2	2	2	1	1	1	2	2	3	4	5	4	4	6	4	5	4	4	5	5	4	3	2	3
8	2	2	1	1	1	1	2	2	5	4	2	1	2	2	2	3	4	5	4	3	3	3	3	3	3
9	2	2	1	1	1	1	1	1	1	1	1	1	2	2	3	2	2	1	2	2	1	1	1	0	1
10	0	0	0	0	1	1	0	0	1	1	2	3	4	5	4	5	6	4	3	3	3	2	2	2	2
11	2	1	1	2	0	1	1	1	4	6	D	D	9	6	6	4	4	4	4	3	4	4	3	2	3
12	2	0	1	2	2	1	1	1	1	1	2	M	2	1	1	1	1	0	0	1	0	0	1	1	1
13	1	1	1	1	1	1	1	1	1	1	1	1	1	2	2	2	1	1	0	0	2	1	1	2	1
14	2	2	1	1	1	1	1	1	2	2	4	4	3	4	6	5	6	4	4	3	3	2	2	2	3
15	1	2	2	2	2	1	1	1	1	7	2	2	3	3	4	3	3	3	2	2	3	4	4	4	3
16	4	4	6	7	8	9	10	13	17	17	17	15	14	14	11	10	10	11	12	10	9	9	9	8	11
17	8	8	9	9	9	9	9	9	10	10	9	9	9	8	7	7	7	8	7	8	8	8	9	7	8
18	7	7	7	8	8	8	8	9	10	11	11	10	9	9	7	7	9	7	6	8	8	7	7	8	8
19	7	7	8	6	5	4	4	5	6	7	7	7	5	4	3	2	1	1	2	5	8	11	11	14	6
20	13	11	10	8	8	7	6	4	4	4	3	6	5	4	3	3	3	4	1	1	0	0	0	0	5
21	0	0	0	0	0	0	1	0	0	1	1	1	0	1	1	2	1	1	2	3	3	2	1	2	1
22	0	0	0	1	1	2	2	2	2	2	2	2	2	2	2	2	2	2	1	1	2	2	1	1	2
23	1	1	1	1	1	1	1	1	2	2	3	2	1	2	2	1	2	2	1	1	1	0	0	1	1
24	1	1	1	0	1	1	1	1	2	4	6	7	5	4	3	4	6	5	3	5	3	4	3	1	3
25	8	5	2	2	1	0	0	1	2	2	1	1	1	0	2	3	2	2	2	2	3	4	3	3	2
26	2	2	2	2	2	2	2	2	2	2	2	2	2	3	2	2	10	12	17	12	10	8	7	3	5
27	3	2	3	3	3	2	3	4	5	5	4	2	2	6	5	3	5	3	2	2	2	2	2	2	3
28	2	2	2	2	2	1	1	2	5	3	3	3	3	3	3	2	2	2	1	1	2	2	1	3	2
29	3	3	3	3	3	3	3	3	4	5	5	5	4	5	5	5	5	5	4	4	5	4	4	2	4
30	2	2	2	2	2	1	1	1	3	3	3	3	4	3	3	3	3	2	2	2	2	2	2	3	2
31	3	2	3	2	2	2	3	3	5	6	8	3	2	4	14	5	3	2	2	3	3	3	2	2	4

MONTHLY STATISTICS:

GEOM	ARITH-----PERCENTILES-----							-----RANGE-----					STN GEOM	PERCENT	NO. OF TIMES	
MEAN	MEDIAN	MEAN	50	90	95	98	99	1-HR		24-HR			DEVIATION	VALID DATA	ABOVE LIMIT LEVEL	
3	2	3	2	8	9	11	14	0	-	17	1	-	11	2	100	0

- NOTES: 1. FLAGS FOR INVALID DATA :
- D: DYNAMIC CALIBRATION
 - T: TELEMETRY/DATALOGGR FAULT
 - M: MAINTENANCE OR ANALYZER FAULT
 - P: POWER FAILURE

THE HONGKONG ELECTRIC COMPANY, LTD.
AIR QUALITY DATA MONTHLY TIME SERIES REPORT
MONTH: DECEMBER

STATION : VICTORIA PEAK
POLLUTANT : NITROGEN DIOXIDE

YEAR : 2015
UNIT : MICROGRAMS/CUBIC METER

DAY	1	2	3	4	5	6	7	8	9	10	11	12	13	14	15	16	17	18	19	20	21	22	23	24	MEAN
1	12	8	7	5	3	3	7	9	20	30	20	16	11	13	18	20	14	15	9	7	9	6	5	5	11
2	5	1	3	3	1	2	5	9	32	26	27	18	17	17	31	23	25	22	38	49	49	77	62	60	25
3	36	M	39	28	21	23	36	49	56	67	60	46	41	34	35	36	38	32	25	24	21	18	15	19	35
4	16	14	12	9	8	7	11	19	26	31	30	29	28	30	31	46	52	37	47	40	36	28	24	13	26
5	9	7	6	6	7	7	7	9	6	6	7	6	5	10	45	43	39	40	41	44	32	30	19	41	20
6	27	26	25	15	20	20	17	22	20	17	24	34	29	27	26	31	35	32	32	38	48	48	41	42	29
7	35	30	18	8	7	11	24	38	43	46	49	47	47	51	59	60	88	91	79	76	68	53	48	35	46
8	17	10	5	8	5	4	10	33	55	54	38	27	22	30	38	56	69	74	74	52	29	21	20	16	32
9	13	8	8	5	4	4	6	7	16	33	29	37	49	52	55	47	46	44	33	47	33	19	19	39	27
10	44	16	2	1	26	24	1	1	14	29	43	39	39	46	57	57	70	88	89	86	74	42	66	61	42
11	52	44	40	31	18	22	28	30	42	50	D	D	38	31	25	8	9	2	6	1	0	5	3	1	22
12	1	0	0	0	0	0	0	0	0	0	0	M	0	0	0	0	0	0	0	0	0	0	0	0	0
13	0	0	0	0	0	0	0	0	0	0	0	0	0	0	0	0	0	7	0	1	10	1	0	7	1
14	4	0	0	0	0	0	1	3	32	44	52	44	59	65	46	41	67	78	72	66	61	50	52	54	37
15	41	37	37	13	15	9	19	29	24	46	36	30	30	29	49	52	55	57	31	18	30	25	9	10	30
16	3	1	0	0	0	0	0	15	31	37	24	30	23	34	27	13	21	18	18	9	14	13	10	17	15
17	5	M	0	0	0	0	4	22	26	27	27	23	24	29	38	36	36	40	55	67	52	42	35	35	27
18	25	32	25	13	15	13	21	35	45	48	45	42	35	32	45	53	66	73	89	80	79	65	56	68	46
19	53	19	8	7	5	5	8	24	42	56	55	53	44	56	59	38	21	43	79	85	97	65	83	41	44
20	35	15	4	0	5	0	0	0	1	24	24	53	47	42	62	65	76	75	36	25	1	0	0	2	25
21	0	0	0	0	0	0	0	1	10	15	18	7	0	2	0	0	5	10	0	0	0	0	0	0	3
22	0	0	0	0	0	0	0	0	0	0	1	2	3	7	14	9	9	24	6	3	1	0	0	0	3
23	0	0	0	0	0	0	0	3	21	23	20	13	7	15	8	8	11	13	8	5	4	2	0	0	7
24	0	0	0	0	0	1	4	6	29	47	25	15	13	2	1	12	11	12	12	23	5	18	15	8	11
25	28	24	20	16	7	0	1	12	18	15	17	20	19	18	19	41	37	45	61	47	61	62	43	30	28
26	16	14	19	13	1	7	1	3	10	3	2	9	7	13	13	19	67	77	83	75	68	61	55	18	27
27	8	8	12	8	9	3	9	14	26	29	26	21	22	37	39	44	57	59	37	29	22	29	26	24	25
28	14	5	1	1	0	0	2	21	29	29	21	25	24	22	24	24	28	21	20	9	18	11	9	11	15
29	6	0	0	0	0	0	0	1	2	11	9	12	6	23	21	50	56	67	62	19	3	24	15	8	16
30	7	3	2	0	0	1	4	25	27	28	29	31	15	18	31	41	41	55	69	56	43	43	38	45	27
31	21	M	22	6	4	3	13	21	26	37	38	17	0	17	51	36	35	25	3	2	0	8	8	1	17

MONTHLY STATISTICS:

GEOM	ARITH-----PERCENTILES-----							-----RANGE-----				STN GEOM	PERCENT	NO. OF TIMES		
MEAN	MEDIAN	MEAN	50	90	95	98	99	1-HR		24-HR	DEVIATION	VALID DATA	ABOVE	LIMIT LEVEL		
18	19	23	19	55	66	77	84	0	-	97	0	-	46	3	99	0

NOTES: 1. FLAGS FOR INVALID DATA :
D: DYNAMIC CALIBRATION
T: TELEMETRY/DATALOGGR FAULT
M: MAINTENANCE OR ANALYZER FAULT
P: POWER FAILURE

THE HONGKONG ELECTRIC COMPANY, LTD.
AIR QUALITY DATA MONTHLY TIME SERIES REPORT

STATION : CHUNG HOM KOK ZONE SUBSTATION
POLLUTANT : SULPHUR DIOXIDE

MONTH: DECEMBER

YEAR : 2015

UNIT : MICROGRAMS/CUBIC METER

DAY	1	2	3	4	5	6	7	8	9	10	11	12	13	14	15	16	17	18	19	20	21	22	23	24	MEAN
1	3	2	1	1	1	0	0	1	1	1	0	1	2	3	2	1	1	1	1	1	1	2	2	2	1
2	1	1	1	1	0	1	2	1	1	0	1	0	1	1	0	0	0	1	1	1	2	5	5	4	1
3	2	1	1	1	1	1	1	1	1	1	1	1	1	1	1	0	0	0	0	0	0	0	1	2	1
4	2	2	2	2	2	2	2	1	1	1	1	1	1	1	0	0	0	0	0	1	1	1	1	4	1
5	5	4	4	4	5	4	3	3	3	2	2	1	1	1	1	1	1	1	1	0	0	0	0	0	2
6	0	0	1	0	0	0	0	0	0	0	0	0	0	1	0	0	0	0	0	1	1	1	0	1	0
7	1	1	1	1	1	1	1	1	2	1	1	2	1	2	2	2	2	2	2	3	3	2	1	1	2
8	1	1	0	0	1	1	0	0	0	1	0	1	1	1	1	1	1	1	1	1	2	2	1	3	1
9	2	1	0	0	1	1	0	0	0	0	0	0	0	0	0	0	0	0	0	0	0	0	0	0	0
10	0	0	0	0	0	2	1	4	3	2	3	5	8	9	5	9	6	6	5	1	1	1	1	6	3
11	1	1	0	0	0	0	0	0	1	15	1	0	0	0	1	2	2	2	2	2	2	2	2	2	2
12	2	1	2	2	2	1	2	1	1	2	2	2	2	2	2	1	1	0	1	2	1	0	0	0	1
13	0	0	0	0	1	0	0	0	1	1	1	1	1	1	2	1	1	0	0	1	1	1	1	4	1
14	4	3	2	1	1	1	1	1	2	2	2	7	5	16	5	4	5	5	3	2	2	2	2	1	3
15	0	0	1	1	1	0	0	0	1	1	1	1	1	0	3	1	1	2	2	1	2	3	2	3	1
16	2	3	4	6	7	7	10	14	12	13	14	12	11	11	9	9	8	8	9	8	8	8	7	7	9
17	7	7	8	7	7	7	7	7	7	6	6	6	5	5	6	5	5	5	7	7	7	7	6	7	6
18	6	7	7	8	8	8	8	8	9	9	8	8	8	7	6	6	6	6	6	7	7	7	7	4	7
19	5	5	5	4	3	2	2	2	3	3	2	2	1	1	0	0	0	0	0	0	3	5	9	12	3
20	10	9	8	7	6	5	4	4	6	5	3	4	4	3	2	1	1	1	1	0	0	1	1	0	4
21	0	0	0	0	0	0	0	0	0	0	1	1	1	1	1	1	0	1	3	2	3	1	1	0	1
22	0	0	0	0	0	0	1	1	1	1	1	1	2	1	1	1	1	0	0	1	1	1	1	1	1
23	1	1	1	1	1	1	2	3	2	3	3	1	1	1	1	2	1	1	0	0	0	0	1	0	1
24	0	0	1	0	1	1	2	2	2	1	1	3	6	7	6	4	7	6	5	4	2	2	3	6	3
25	9	7	3	2	1	1	1	4	2	2	1	0	0	1	3	3	2	2	2	2	3	2	1	2	2
26	2	1	1	1	2	2	2	2	2	1	1	1	1	2	2	2	1	1	1	1	2	2	1	2	2
27	1	1	2	3	3	3	3	3	2	2	2	1	0	1	6	4	6	4	2	1	0	1	1	1	2
28	0	0	0	0	0	0	1	2	1	2	1	1	1	1	2	2	2	2	1	1	1	1	2	3	1
29	2	2	1	1	1	1	2	1	2	3	3	3	3	3	4	3	4	4	4	4	3	3	3	3	3
30	2	2	2	2	2	1	2	2	2	2	2	2	3	2	2	2	1	1	2	2	1	1	1	2	2
31	2	2	1	2	1	1	1	1	1	2	2	1	1	1	1	1	1	2	2	3	2	2	2	4	2

MONTHLY STATISTICS:

GEOM	ARITH-----PERCENTILES-----							-----RANGE-----				STN GEOM	PERCENT	NO. OF TIMES		
MEAN	MEDIAN	MEAN	50	90	95	98	99	1-HR		24-HR		DEVIATION	VALID DATA	ABOVE LIMIT LEVEL		
2	1	2	1	6	8	9	12	0	-	16	0	-	9	2	100	0

- NOTES: 1. FLAGS FOR INVALID DATA :
- D: DYNAMIC CALIBRATION
 - T: TELEMETRY/DATALOGGR FAULT
 - M: MAINTENANCE OR ANALYZER FAULT
 - P: POWER FAILURE

THE HONGKONG ELECTRIC COMPANY, LTD.
AIR QUALITY DATA MONTHLY TIME SERIES REPORT

STATION : CHUNG HOM KOK ZONE SUBSTATION
POLLUTANT : NITROGEN DIOXIDE

MONTH: DECEMBER

YEAR : 2015

UNIT : MICROGRAMS/CUBIC METER

DAY	1	2	3	4	5	6	7	8	9	10	11	12	13	14	15	16	17	18	19	20	21	22	23	24	MEAN
1	12	10	8	6	6	5	7	10	9	10	10	9	11	11	11	11	14	14	12	12	11	13	12	11	10
2	8	M	8	8	7	8	11	13	12	11	12	10	9	10	10	9	11	14	10	8	8	18	16	24	11
3	23	16	12	18	20	18	25	37	37	40	32	14	14	15	18	15	17	15	12	11	12	12	11	14	19
4	14	13	15	13	13	12	13	13	13	13	12	11	10	11	11	11	12	13	18	20	18	14	13	12	13
5	12	11	11	11	12	11	11	12	11	11	11	10	11	12	22	56	50	54	38	27	18	12	22	24	20
6	27	38	38	35	31	23	19	17	19	22	20	21	34	33	35	31	31	34	40	38	28	27	27	20	29
7	18	14	12	9	10	10	10	20	31	28	19	16	16	14	19	22	25	32	38	41	35	32	15	14	21
8	14	13	8	8	10	8	9	12	16	14	13	14	14	12	14	21	23	21	23	17	16	16	15	14	14
9	9	9	12	9	7	7	9	9	8	8	9	18	26	39	37	29	13	10	21	52	44	10	9	6	17
10	6	7	5	6	8	44	42	43	42	40	37	41	46	57	62	72	84	96	109	92	67	46	50	57	48
11	42	43	13	5	10	13	11	20	26	40	29	13	10	8	10	12	11	10	9	8	10	11	9	8	16
12	8	7	7	7	7	7	8	8	8	9	10	10	10	9	10	10	9	9	12	13	9	9	10	7	9
13	6	6	6	5	6	5	6	7	12	14	10	10	9	10	11	13	10	10	13	8	11	9	6	10	9
14	11	9	7	5	7	4	5	6	9	14	23	60	63	59	52	56	70	97	92	79	68	54	41	47	39
15	35	39	39	37	33	27	22	30	47	54	57	54	31	25	47	50	53	60	57	26	24	15	11	12	37
16	8	M	10	10	9	10	11	17	18	21	30	24	20	19	22	26	21	26	24	19	16	12	11	12	17
17	11	11	7	6	6	6	7	12	16	15	14	14	12	10	11	14	15	20	29	26	20	21	15	14	14
18	11	9	11	11	11	11	13	16	18	18	16	16	12	11	13	18	19	23	20	20	18	16	14	16	15
19	17	19	17	17	14	12	13	14	14	20	26	22	32	28	18	13	10	15	12	35	47	44	34	23	22
20	23	20	14	15	9	12	11	11	17	20	17	23	25	23	28	21	39	34	19	22	17	20	16	13	20
21	14	12	8	7	5	4	6	10	10	12	8	6	5	5	5	4	4	8	9	8	12	8	8	8	8
22	10	7	6	6	6	5	6	9	9	12	10	10	11	9	9	10	11	10	12	11	11	11	9	6	9
23	5	6	7	6	7	9	12	13	14	16	15	14	18	17	21	22	19	17	20	12	11	9	13	8	13
24	9	10	15	15	11	8	10	12	11	20	14	11	17	23	20	13	26	38	44	36	20	17	19	44	19
25	48	43	40	36	30	19	18	28	21	23	30	31	31	35	41	42	35	40	34	28	31	24	29	13	31
26	11	10	8	9	10	9	9	12	12	9	11	13	15	14	15	21	21	16	11	14	12	15	15	19	13
27	20	16	17	19	19	19	21	21	21	35	48	44	30	29	57	57	66	70	36	16	8	14	15	14	30
28	11	7	6	7	5	4	8	12	12	13	11	10	11	12	15	19	19	15	11	10	8	8	8	9	10
29	9	10	10	9	9	7	9	8	9	9	8	7	7	7	10	11	14	11	12	16	10	9	9	9	10
30	15	M	13	14	12	10	10	15	16	16	15	15	14	12	16	20	15	10	12	19	23	21	20	15	15
31	17	13	12	12	14	13	18	21	13	13	11	15	9	8	12	13	14	17	9	9	8	10	11	10	13

MONTHLY STATISTICS:

GEOM	ARITH-----PERCENTILES-----										RANGE-----		STN GEOM	PERCENT	NO. OF TIMES	
MEAN	MEDIAN	MEAN	50	90	95	98	99	1-HR		24-HR		DEVIATION	VALID DATA	ABOVE	LIMIT	LEVEL
15	13	18	13	38	48	60	71	4	-	109	8	-	48	2	100	0

- NOTES: 1. FLAGS FOR INVALID DATA :
- D: DYNAMIC CALIBRATION
 - T: TELEMETRY/DATALOGGR FAULT
 - M: MAINTENANCE OR ANALYZER FAULT
 - P: POWER FAILURE

THE HONGKONG ELECTRIC COMPANY, LTD.
AIR QUALITY DATA MONTHLY TIME SERIES REPORT
MONTH: DECEMBER

STATION : VICTORIA ROAD SUBSTATION
POLLUTANT : SULPHUR DIOXIDE

YEAR : 2015
UNIT : MICROGRAMS/CUBIC METER

DAY	1	2	3	4	5	6	7	8	9	10	11	12	13	14	15	16	17	18	19	20	21	22	23	24	MEAN
1	2	2	1	1	1	1	0	0	1	1	1	1	1	2	1	1	1	1	1	1	1	2	2	2	1
2	2	1	0	1	1	1	1	1	1	1	1	1	3	3	1	1	1	1	1	2	1	1	2	2	1
3	1	1	1	1	1	2	4	2	5	7	5	3	2	1	1	0	0	0	0	0	0	0	0	2	2
4	1	2	2	2	2	2	2	2	1	1	2	2	2	1	1	1	1	1	1	2	1	2	4	2	2
5	4	4	4	4	5	5	4	3	2	2	2	1	1	1	3	4	2	3	1	1	1	1	0	1	2
6	1	7	3	1	2	2	2	2	1	0	0	3	2	5	4	3	2	1	2	3	2	1	1	5	2
7	5	3	2	1	2	4	2	2	3	5	10	9	9	8	8	7	5	3	3	3	4	3	3	2	4
8	1	2	1	1	2	1	2	2	3	3	1	1	1	1	1	2	3	3	3	3	3	2	2	2	2
9	2	1	1	0	0	1	1	0	0	0	0	3	2	2	1	1	1	1	1	2	1	0	3	1	1
10	1	1	3	2	3	8	5	6	4	4	9	6	13	10	7	9	9	8	6	4	4	3	5	3	6
11	3	2	2	2	1	1	1	2	13	16	18	15	13	6	5	2	2	2	1	2	1	1	1	2	5
12	1	1	1	1	1	1	1	1	1	1	2	2	2	1	1	1	1	0	0	0	0	0	0	0	1
13	0	0	0	0	0	0	0	0	0	0	0	0	0	1	1	1	0	0	0	0	0	0	0	1	0
14	3	4	1	1	2	1	1	1	1	8	10	11	9	12	5	7	8	8	5	6	3	2	2	3	5
15	2	3	2	4	3	2	1	2	5	10	7	5	5	10	12	4	3	3	3	2	3	4	4	4	4
16	3	3	4	4	5	6	7	10	11	12	11	10	9	9	9	7	7	8	8	7	5	5	5	6	7
17	5	5	6	6	6	5	5	5	5	6	5	5	4	4	4	4	4	4	5	5	5	5	5	6	5
18	5	5	5	6	6	5	5	6	7	7	7	7	6	5	5	5	5	4	5	6	6	5	5	5	6
19	4	4	5	4	3	2	2	3	4	5	4	4	3	2	2	1	0	1	1	5	6	7	7	8	4
20	8	7	7	6	5	5	13	25	34	24	10	11	8	4	2	4	14	22	19	12	15	8	6	9	12
21	9	3	2	1	1	1	1	1	1	2	6	6	1	1	1	1	1	1	2	2	2	1	1	1	2
22	0	0	0	0	0	0	0	0	1	1	1	1	1	1	1	2	1	9	9	7	11	20	19	20	4
23	18	20	24	20	12	12	10	13	20	28	35	33	25	21	16	4	3	26	19	16	17	29	17	23	19
24	20	25	14	30	30	15	12	13	41	44	56	10	29	14	7	9	10	37	24	23	6	9	11	12	21
25	10	9	7	5	3	1	1	1	1	1	1	1	3	2	3	7	13	2	2	2	2	4	3	3	4
26	2	2	2	2	5	5	3	2	2	2	12	4	6	14	11	9	15	16	20	17	15	13	11	7	8
27	5	2	2	2	2	3	6	9	6	6	3	1	17	12	6	8	5	3	3	4	4	4	2	3	5
28	2	2	2	2	2	2	1	2	2	3	2	2	2	2	2	2	2	1	1	1	1	1	1	2	2
29	2	2	1	1	1	1	1	2	2	3	3	2	2	3	2	2	2	3	2	3	3	2	2	2	2
30	2	2	2	2	2	1	1	1	2	2	2	2	3	3	3	4	8	8	3	2	1	2	2	2	3
31	1	2	3	2	1	1	1	1	4	4	10	8	9	9	12	17	4	7	2	2	2	2	1	2	4

MONTHLY STATISTICS:

GEOM	ARITH-----PERCENTILES-----										RANGE-----		STN GEOM	PERCENT	NO. OF TIMES	
MEAN	MEDIAN	MEAN	50	90	95	98	99	1-HR		24-HR		DEVIATION	VALID DATA	ABOVE	LIMIT	LEVEL
3	2	5	2	11	17	25	30	0	-	56	0	-	21	3	100	0

- NOTES: 1. FLAGS FOR INVALID DATA :
- D: DYNAMIC CALIBRATION
 - T: TELEMETRY/DATALOGGR FAULT
 - M: MAINTENANCE OR ANALYZER FAULT
 - P: POWER FAILURE

THE HONGKONG ELECTRIC COMPANY, LTD.
AIR QUALITY DATA MONTHLY TIME SERIES REPORT

STATION : VICTORIA ROAD SUBSTATION
POLLUTANT : NITROGEN DIOXIDE

MONTH: DECEMBER

YEAR : 2015
UNIT : MICROGRAMS/CUBIC METER

DAY	1	2	3	4	5	6	7	8	9	10	11	12	13	14	15	16	17	18	19	20	21	22	23	24	MEAN
1	12	8	6	5	4	5	15	18	18	20	16	13	14	12	13	14	18	20	19	14	12	10	8	8	13
2	6	M	2	1	2	3	16	24	18	15	10	8	1	5	3	5	6	11	21	33	42	56	42	64	17
3	49	31	33	27	18	32	38	43	46	42	43	46	27	31	30	30	28	20	17	15	12	11	10	14	29
4	11	9	8	7	7	6	11	17	20	22	20	20	22	24	20	26	31	26	35	29	27	17	15	11	18
5	9	7	6	6	6	7	9	9	8	7	5	7	8	12	42	37	33	40	28	24	23	26	24	33	17
6	34	33	24	19	23	19	20	22	17	15	18	22	24	28	32	30	33	28	40	46	39	37	38	42	28
7	41	37	27	21	22	34	32	34	39	41	39	39	34	41	49	62	78	82	69	65	65	50	42	32	45
8	17	11	9	9	8	7	18	37	41	42	31	22	20	24	26	50	61	62	61	57	38	18	16	15	29
9	11	8	8	5	4	6	10	13	15	22	19	39	42	44	40	42	35	40	40	42	33	34	50	31	26
10	40	41	39	32	31	30	33	31	28	24	29	29	35	41	46	56	72	80	76	68	71	54	48	50	45
11	49	39	38	26	23	21	29	39	39	38	38	38	38	18	19	19	23	21	19	13	10	10	9	11	26
12	9	5	3	3	3	3	5	7	9	8	8	9	8	7	8	9	9	10	8	6	6	6	7	6	7
13	3	3	2	1	2	2	5	5	7	8	7	6	6	9	12	9	10	19	17	14	28	19	8	25	9
14	31	26	9	9	11	8	18	20	37	45	38	37	40	41	35	52	69	74	73	65	60	44	49	54	39
15	47	38	36	32	29	18	26	37	43	45	43	35	32	40	49	53	53	67	48	31	27	27	23	29	38
16	13	M	9	8	7	9	14	22	36	38	29	30	28	27	27	32	29	36	32	26	20	22	23	23	23
17	17	10	7	6	6	7	14	23	29	28	24	21	23	23	30	34	37	52	66	51	46	39	37	34	28
18	34	30	20	15	18	17	27	34	35	32	26	34	32	27	32	39	52	57	76	71	59	61	62	53	39
19	48	31	17	14	12	12	18	22	39	46	46	48	39	39	42	28	21	44	54	100	73	63	58	46	40
20	51	31	24	19	17	32	60	75	80	74	59	68	65	56	58	67	75	78	73	71	68	59	54	58	57
21	58	18	10	9	14	16	15	32	34	30	31	24	12	12	13	11	13	13	12	10	9	6	5	7	17
22	6	4	3	2	3	4	8	12	12	12	11	10	11	14	17	25	28	56	59	56	69	64	63	61	25
23	61	57	57	52	41	42	40	40	36	39	50	57	58	57	54	30	35	70	75	72	71	69	67	61	54
24	58	56	45	53	53	45	45	42	45	41	46	19	29	24	20	21	28	62	60	59	47	36	42	40	42
25	31	28	26	24	22	14	13	18	20	23	24	27	27	31	30	44	47	45	43	40	48	48	43	52	32
26	40	31	38	18	35	39	25	22	30	27	41	26	27	39	39	43	76	75	69	64	62	60	58	51	43
27	41	21	24	24	19	29	36	34	32	35	32	23	45	49	48	56	54	55	61	57	60	55	45	35	40
28	24	18	16	13	11	13	23	33	38	36	27	29	34	28	26	28	28	32	38	19	23	22	14	21	25
29	17	14	9	6	5	5	11	17	15	20	15	21	20	26	21	30	38	57	68	35	18	25	26	20	22
30	17	M	13	10	13	15	19	29	29	32	33	35	23	24	34	49	59	63	66	59	39	34	45	38	34
31	33	33	37	27	16	18	24	32	37	38	33	31	36	41	49	60	42	52	28	23	17	16	17	12	31

MONTHLY STATISTICS:

GEOM	ARITH-----PERCENTILES-----										RANGE-----		STN GEOM	PERCENT	NO. OF TIMES	
MEAN	MEDIAN	MEAN	50	90	95	98	99	1-HR	24-HR	DEVIATION	VALID DATA	ABOVE	LIMIT	LEVEL		
24	28	30	28	58	66	73	76	1	-	100	7	-	57	2	100	0

- NOTES: 1. FLAGS FOR INVALID DATA :
- D: DYNAMIC CALIBRATION
 - T: TELEMETRY/DATALOGGR FAULT
 - M: MAINTENANCE OR ANALYZER FAULT
 - P: POWER FAILURE

THE HONGKONG ELECTRIC COMPANY, LTD.
AIR QUALITY DATA MONTHLY TIME SERIES REPORT
MONTH: DECEMBER

STATION : POK FU LAM
POLLUTANT : SULPHUR DIOXIDE

YEAR : 2015
UNIT : MICROGRAMS/CUBIC METER

DAY	1	2	3	4	5	6	7	8	9	10	11	12	13	14	15	16	17	18	19	20	21	22	23	24	MEAN
1	3	3	2	2	2	1	2	1	1	2	2	2	2	3	3	2	2	1	2	2	3	3	3	2	2
2	2	2	2	2	1	1	2	2	3	2	2	1	4	3	8	4	2	2	2	2	2	3	3	2	
3	2	2	3	2	2	3	4	3	4	8	6	5	4	2	1	1	1	0	0	0	0	1	1	2	2
4	3	3	3	4	4	4	3	4	3	3	3	3	3	3	2	2	2	2	3	3	3	3	3	4	3
5	6	5	4	5	4	5	2	3	4	4	4	3	2	2	3	4	2	3	2	2	2	1	1	0	3
6	1	5	2	0	1	1	1	1	1	2	2	1	1	6	5	3	2	2	2	3	3	3	1	5	2
7	5	3	1	1	1	4	2	1	3	6	13	12	9	9	10	7	3	3	2	2	2	3	2	2	4
8	2	1	1	1	1	1	1	2	2	3	2	2	2	1	2	2	3	4	4	4	3	3	2	2	2
9	3	2	1	1	1	1	1	1	1	0	1	3	3	2	2	2	1	1	2	2	0	1	4	0	2
10	0	0	1	1	2	8	4	6	5	6	13	6	14	10	7	9	12	9	5	3	3	2	2	3	5
11	2	2	2	2	1	1	2	4	17	15	18	19	11	12	13	4	3	2	2	2	2	2	2	3	6
12	2	2	2	2	3	2	2	2	2	2	4	3	3	2	2	2	1	1	1	1	1	1	1	1	2
13	0	1	1	1	1	1	1	1	1	2	1	1	1	2	2	2	1	1	0	0	1	3	0	13	2
14	15	9	9	8	14	9	4	3	3	6	13	15	11	12	6	8	9	8	6	7	4	4	3	2	8
15	2	3	2	4	4	2	2	2	7	12	9	6	7	10	9	3	3	3	4	3	3	5	5	5	5
16	4	3	5	7	8	8	10	14	17	18	16	14	13	14	12	10	10	11	11	10	8	8	8	10	8
17	7	7	8	8	9	8	8	8	9	11	8	7	7	6	7	7	7	6	7	7	7	7	7	9	8
18	9	8	8	9	10	10	9	10	13	12	11	10	9	9	8	8	8	8	8	9	10	9	8	8	9
19	7	6	7	6	4	3	4	4	7	8	7	5	4	3	2	1	1	1	1	9	11	9	10	10	5
20	12	10	10	7	7	7	10	35	42	37	24	16	8	5	3	7	10	11	12	8	8	6	5	3	13
21	2	1	1	0	0	1	0	0	0	0	2	2	1	0	1	1	1	0	2	2	3	1	0	1	1
22	1	0	0	1	1	2	1	2	2	2	1	1	1	2	4	2	6	17	11	11	4	3	15	11	4
23	22	24	38	30	16	17	14	22	23	30	29	53	28	32	48	17	6	29	25	20	40	42	19	37	28
24	30	27	22	45	65	28	15	9	52	68	64	39	29	19	7	8	8	34	27	24	12	9	10	14	28
25	11	9	7	7	2	2	2	1	2	1	1	0	1	3	4	4	2	2	2	2	3	5	4	3	3
26	2	3	2	2	9	7	3	2	2	2	1	2	2	17	13	8	18	19	22	19	17	14	15	10	9
27	8	3	2	3	2	3	7	9	7	7	3	2	6	11	6	9	5	3	5	5	3	2	1	2	5
28	3	2	2	3	3	2	2	2	3	3	3	3	2	2	3	2	2	2	2	2	1	2	1	3	2
29	3	3	3	2	3	2	2	3	5	10	5	4	4	6	4	4	4	4	4	4	4	4	4	3	4
30	3	2	3	2	1	1	0	1	3	3	3	3	5	3	3	4	13	19	4	3	2	2	2	3	4
31	2	3	6	4	3	2	2	3	5	7	16	10	8	12	12	17	7	9	3	3	3	3	3	3	6

MONTHLY STATISTICS:

GEOM		ARITH ----- PERCENTILES -----							----- RANGE -----				STN GEOM	PERCENT	NO. OF TIMES	
MEAN	MEDIAN	MEAN	50	90	95	98	99	1-HR	24-HR	DEVIATION	VALID DATA	ABOVE	LIMIT	LEVEL		
4	3	6	3	13	19	34	42	0	-	68	1	-	28	3	100	0

NOTES: 1. FLAGS FOR INVALID DATA :
D: DYNAMIC CALIBRATION
T: TELEMETRY/DATALOGGR FAULT
M: MAINTENANCE OR ANALYZER FAULT
P: POWER FAILURE

THE HONGKONG ELECTRIC COMPANY, LTD.
AIR QUALITY DATA MONTHLY TIME SERIES REPORT
MONTH: DECEMBER

STATION : POK FU LAM
POLLUTANT : NITROGEN DIOXIDE

YEAR : 2015
UNIT : MICROGRAMS/CUBIC METER

DAY	1	2	3	4	5	6	7	8	9	10	11	12	13	14	15	16	17	18	19	20	21	22	23	24	MEAN
1	18	14	11	10	8	9	17	30	34	41	33	26	19	20	19	19	22	28	28	21	17	14	17	17	21
2	14	9	9	9	9	8	19	28	29	19	17	17	12	14	15	21	26	34	40	40	55	76	73	80	28
3	54	37	53	38	26	52	54	55	59	52	56	64	61	49	34	35	32	41	39	28	24	22	18	16	42
4	17	15	13	13	13	12	14	20	23	28	26	31	30	29	31	31	34	42	37	34	33	32	24	22	25
5	18	15	13	14	14	15	15	15	15	12	12	13	13	21	61	51	47	54	41	31	26	31	28	54	26
6	45	M	36	30	38	31	32	35	28	34	37	34	35	43	47	41	44	45	57	61	59	54	52	57	42
7	56	52	43	33	34	48	47	48	54	53	55	51	45	55	68	82	92	105	94	85	77	65	57	49	60
8	22	12	17	15	10	9	24	55	59	59	49	29	21	22	36	72	78	81	79	76	46	30	32	19	40
9	17	15	15	11	11	15	15	19	28	26	25	56	61	60	56	58	44	38	53	55	22	31	59	47	35
10	53	55	54	51	45	45	47	43	39	36	42	41	48	54	62	73	86	101	97	85	91	50	57	61	59
11	58	54	48	35	21	30	47	50	54	56	58	59	51	51	50	34	41	43	44	38	26	23	22	15	42
12	17	13	11	10	10	8	12	13	13	16	14	14	12	12	15	15	15	18	12	13	12	11	12	10	13
13	9	9	8	8	7	7	9	11	13	14	15	14	14	15	14	21	26	29	31	31	33	28	9	65	18
14	71	54	42	31	53	41	25	28	48	60	50	53	57	58	47	66	88	97	95	87	80	68	68	64	60
15	62	56	51	43	43	29	34	54	61	62	60	51	45	52	63	67	74	87	78	56	45	44	39	42	54
16	26	23	19	18	16	22	27	35	60	61	51	49	43	41	40	40	43	54	52	45	38	39	35	33	38
17	24	18	11	10	10	13	21	38	44	34	32	31	31	28	37	38	51	74	94	76	59	46	50	49	38
18	45	47	33	25	26	28	36	59	51	38	41	48	39	41	35	38	47	79	98	90	95	111	99	68	55
19	76	60	41	24	19	20	33	49	61	75	67	68	61	49	53	42	38	47	73	158	119	66	49	45	58
20	48	M	27	26	31	27	40	89	92	98	94	91	76	72	78	94	99	103	96	92	90	79	74	69	73
21	52	19	12	19	38	28	35	50	43	36	34	27	21	25	30	20	27	26	22	20	15	10	8	12	26
22	11	10	7	7	8	8	10	14	18	18	16	16	21	23	31	33	54	83	83	74	53	26	66	80	32
23	79	76	78	72	51	54	52	56	51	51	59	72	76	80	87	71	67	95	98	98	95	89	76	86	74
24	76	72	70	72	76	64	56	45	61	58	59	49	44	35	28	26	30	76	84	82	74	56	56	48	58
25	47	41	39	37	33	25	21	30	33	36	35	32	43	44	43	57	50	63	68	60	68	66	68	61	46
26	46	70	53	46	62	54	55	30	46	36	29	33	31	53	52	49	99	99	91	85	84	81	81	79	60
27	57	37	36	29	28	28	50	48	44	48	48	25	35	64	67	76	73	73	79	78	65	65	58	48	52
28	37	34	24	23	19	18	31	47	53	53	47	50	50	38	47	41	49	50	44	39	27	28	28	25	38
29	22	15	12	11	11	9	13	19	26	34	21	23	27	30	32	31	51	62	48	57	40	28	22	23	28
30	20	24	18	16	24	25	30	52	55	55	54	53	37	29	49	66	83	105	83	70	46	47	71	51	48
31	45	56	54	41	31	33	41	51	52	51	46	42	44	58	65	70	54	77	39	32	25	30	26	20	45

MONTHLY STATISTICS:

GEOM	ARITH-----PERCENTILES-----								-----RANGE-----				STN GEOM	PERCENT	NO. OF TIMES	
MEAN	MEDIAN	MEAN	50	90	95	98	99	1-HR	24-HR	DEVIATION	VALID DATA	ABOVE	LIMIT	LEVEL		
36	41	43	41	76	87	97	99	7	-	158	13	-	74	2	100	0

- NOTES: 1. FLAGS FOR INVALID DATA :
- D: DYNAMIC CALIBRATION
 - T: TELEMETRY/DATALOGGR FAULT
 - M: MAINTENANCE OR ANALYZER FAULT
 - P: POWER FAILURE

THE HONGKONG ELECTRIC COMPANY, LTD.
AIR QUALITY DATA MONTHLY TIME SERIES REPORT
MONTH: DECEMBER

STATION : AP LEI CHAU
POLLUTANT : SULPHUR DIOXIDE

YEAR : 2015
UNIT : MICROGRAMS/CUBIC METER

DAY	1	2	3	4	5	6	7	8	9	10	11	12	13	14	15	16	17	18	19	20	21	22	23	24	MEAN
1	3	2	1	1	1	0	1	0	0	0	1	1	1	3	2	0	1	0	0	0	0	1	2	2	1
2	2	1	1	1	1	1	2	1	1	2	2	1	1	1	1	1	0	0	0	1	1	1	5	6	1
3	2	1	2	2	2	3	7	3	5	8	17	35	3	2	1	1	0	0	0	0	0	1	1	3	4
4	4	4	3	3	5	4	4	3	3	3	4	4	3	3	3	3	2	2	2	3	3	3	4	4	3
5	4	3	2	2	4	4	2	1	2	2	1	1	0	0	2	1	1	0	0	1	1	0	10	2	2
6	0	7	1	0	0	1	0	0	0	0	0	5	7	2	1	0	0	0	0	0	0	0	0	2	1
7	2	0	1	1	0	0	0	0	2	3	7	9	6	7	7	6	2	2	1	2	2	1	2	2	3
8	2	1	1	1	1	1	1	1	2	2	1	1	1	0	1	2	3	4	4	3	2	3	3	2	2
9	3	1	1	0	2	2	1	1	1	0	1	2	1	2	2	1	0	0	1	1	3	2	1	1	1
10	0	0	0	0	0	5	5	7	5	4	5	6	11	9	5	10	6	6	4	2	2	6	6	3	4
11	3	3	2	2	3	3	1	2	9	20	41	36	11	4	1	0	1	1	2	2	2	1	1	2	6
12	2	1	0	1	0	0	0	0	0	0	1	2	1	1	0	1	0	0	0	0	0	0	0	1	0
13	1	0	1	1	1	0	0	0	1	2	1	0	1	2	1	1	0	0	0	0	0	1	1	1	1
14	2	2	1	0	0	M	1	2	2	3	12	13	9	14	6	6	9	8	6	4	5	4	3	3	5
15	2	2	4	4	2	1	0	0	1	8	6	3	6	10	8	5	2	2	2	1	3	4	2	4	3
16	5	5	4	8	9	10	13	15	14	10	15	14	13	12	12	10	8	8	8	9	9	10	9	5	10
17	6	5	7	7	7	6	6	5	5	1	0	1	4	3	3	3	4	1	1	7	7	7	7	2	4
18	2	2	1	2	2	2	2	3	2	0	0	2	3	2	1	1	0	0	0	1	1	1	1	3	1
19	1	4	3	3	2	1	2	3	2	0	1	3	2	0	0	0	1	1	0	0	2	6	7	9	2
20	8	6	5	4	3	5	3	6	46	14	1	2	2	0	0	2	18	21	26	19	19	2	0	12	9
21	7	2	1	4	2	3	2	2	3	2	4	4	3	3	3	1	1	2	4	4	4	2	2	0	3
22	0	0	0	0	1	0	0	1	2	2	3	0	1	2	3	2	1	0	0	1	1	1	1	22	2
23	3	2	1	1	1	2	1	5	28	50	85	25	8	7	1	4	3	1	0	0	0	0	0	2	10
24	4	10	10	17	12	8	2	2	23	68	67	3	4	6	3	8	20	44	16	17	2	5	15	17	16
25	14	9	7	6	5	3	2	1	4	3	3	1	23	7	4	21	16	23	4	3	8	6	5	1	7
26	0	0	0	0	1	0	0	0	0	0	6	0	0	0	11	12	5	11	14	13	8	8	4	4	4
27	4	1	2	2	2	4	3	11	6	6	5	4	9	8	7	10	9	5	5	1	1	1	1	1	5
28	0	0	0	1	0	0	0	1	1	1	1	0	0	0	0	0	0	0	0	0	0	0	0	3	0
29	2	2	1	2	1	0	1	2	2	4	3	3	2	4	4	4	3	3	2	1	3	3	3	4	2
30	4	4	3	3	2	2	2	1	5	5	4	5	6	4	3	4	3	3	1	2	2	2	3	1	3
31	1	1	1	1	1	1	0	3	3	4	7	11	16	3	6	0	1	0	0	1	2	2	2	2	3

MONTHLY STATISTICS:

GEOM	ARITH-----PERCENTILES-----										RANGE-----		STN GEOM	PERCENT	NO. OF TIMES	
MEAN	MEDIAN	MEAN	50	90	95	98	99	1-HR		24-HR		DEVIATION	VALID DATA	ABOVE	LIMIT	LEVEL
3	2	4	2	9	14	22	36	0	-	85	0	-	16	3	100	0

NOTES: 1. FLAGS FOR INVALID DATA :
D: DYNAMIC CALIBRATION
T: TELEMETRY/DATALOGGR FAULT
M: MAINTENANCE OR ANALYZER FAULT
P: POWER FAILURE

THE HONGKONG ELECTRIC COMPANY, LTD.
AIR QUALITY DATA MONTHLY TIME SERIES REPORT
MONTH: DECEMBER

STATION : AP LEI CHAU
POLLUTANT : NITROGEN DIOXIDE

YEAR : 2015
UNIT : MICROGRAMS/CUBIC METER

DAY	1	2	3	4	5	6	7	8	9	10	11	12	13	14	15	16	17	18	19	20	21	22	23	24	MEAN
1	15	7	8	9	5	8	10	11	8	14	10	8	5	7	6	9	14	9	9	7	6	7	6	9	9
2	8	M	6	8	7	8	13	11	13	7	6	6	5	4	4	5	8	9	10	6	15	19	23	45	11
3	53	46	39	40	26	36	47	55	59	60	59	58	30	28	29	23	24	26	20	20	18	18	17	17	35
4	18	15	13	12	13	14	18	23	23	24	23	22	20	19	20	22	27	22	30	30	29	26	17	12	21
5	12	11	12	12	13	14	13	15	13	10	10	10	10	13	42	49	42	43	41	42	43	25	42	39	24
6	40	46	37	27	32	29	29	31	30	26	27	29	36	30	37	37	37	43	42	41	47	48	51	44	37
7	35	38	27	25	23	31	36	49	49	53	53	45	42	50	65	75	93	83	87	84	74	65	53	42	53
8	23	17	13	11	12	11	21	37	48	39	19	22	18	22	32	44	73	80	72	41	27	23	25	24	31
9	18	17	14	9	8	11	11	9	13	22	26	49	56	57	53	50	45	52	42	53	49	34	24	30	31
10	43	29	20	13	27	40	47	45	41	40	42	42	46	51	55	69	81	97	96	94	86	82	69	67	55
11	61	54	49	42	37	28	43	54	57	53	52	51	29	16	6	10	13	17	24	18	15	17	17	16	32
12	13	9	7	8	8	7	10	9	9	11	12	12	9	11	8	10	7	7	6	8	7	7	8	8	9
13	7	6	6	5	5	5	5	6	8	8	8	9	10	10	9	12	14	24	15	15	24	16	15	18	11
14	18	13	11	9	8	M	21	26	36	42	55	53	57	59	49	65	85	93	92	88	84	72	65	65	51
15	56	57	49	43	36	34	35	49	53	60	59	48	45	52	63	80	78	78	59	44	39	33	23	27	50
16	20	M	14	12	15	14	24	34	41	49	43	40	35	35	37	37	43	41	48	38	26	25	23	22	31
17	21	16	11	10	10	13	26	37	45	39	39	34	29	28	21	32	50	57	60	68	65	49	47	47	36
18	39	29	28	20	23	23	26	34	33	29	31	37	26	24	27	35	47	53	78	70	76	65	58	84	41
19	75	39	21	18	18	19	25	32	43	54	53	54	52	44	42	36	23	32	60	77	87	76	76	46	46
20	35	23	18	16	20	29	31	42	82	56	37	28	31	46	43	54	89	94	80	86	78	46	43	59	49
21	47	16	10	8	7	8	15	36	34	24	15	10	10	9	8	8	12	15	8	7	8	5	5	7	14
22	11	10	6	8	7	7	10	13	13	11	12	12	15	16	10	9	7	12	28	26	31	25	19	68	16
23	31	17	18	12	16	20	24	46	50	62	71	38	34	25	17	12	11	10	21	11	33	10	5	10	25
24	20	23	42	39	42	43	24	33	47	54	45	7	9	12	9	14	30	43	41	39	21	35	40	35	31
25	43	39	37	34	30	17	21	24	30	35	39	37	46	46	43	56	64	76	58	51	72	57	49	40	44
26	38	22	18	16	22	16	14	21	22	23	34	23	17	23	44	42	51	95	95	90	72	67	41	32	39
27	30	24	25	24	22	23	31	46	45	46	51	44	48	53	64	72	74	76	66	48	44	40	34	46	45
28	35	28	21	18	15	14	18	32	38	32	33	32	28	24	26	25	21	28	29	15	17	14	11	17	24
29	24	19	13	8	8	9	13	15	14	14	12	14	13	13	13	24	15	25	24	12	15	23	14	16	15
30	23	M	12	13	15	16	30	40	36	36	29	28	14	16	19	54	60	23	26	32	36	45	57	44	31
31	33	29	34	24	22	28	35	44	45	38	40	40	37	26	39	15	17	14	16	32	11	18	10	10	27

MONTHLY STATISTICS:

GEOM	ARITH-----PERCENTILES-----										RANGE-----		STN GEOM	PERCENT	NO. OF TIMES	
MEAN	MEDIAN	MEAN	50	90	95	98	99	1-HR		24-HR		DEVIATION	VALID DATA	ABOVE	LIMIT LEVEL	
25	27	31	27	59	75	86	93	4	-	97	9	-	55	2	99	0

NOTES: 1. FLAGS FOR INVALID DATA :
D: DYNAMIC CALIBRATION
T: TELEMETRY/DATALOGGR FAULT
M: MAINTENANCE OR ANALYZER FAULT
P: POWER FAILURE

THE HONGKONG ELECTRIC COMPANY, LTD.
AIR QUALITY DATA MONTHLY TIME SERIES REPORT
MONTH: DECEMBER

STATION : CHEUNG CHAU
POLLUTANT : SULPHUR DIOXIDE

YEAR : 2015
UNIT : MICROGRAMS/CUBIC METER

DAY	1	2	3	4	5	6	7	8	9	10	11	12	13	14	15	16	17	18	19	20	21	22	23	24	MEAN
1	4	4	4	2	3	3	2	4	7	8	6	3	3	3	4	3	3	2	2	3	2	2	3	2	3
2	3	2	2	2	2	2	2	4	5	5	4	4	3	2	3	9	7	8	7	6	10	7	7	10	5
3	11	4	2	2	2	2	2	2	1	2	3	2	3	3	4	4	7	2	3	2	2	3	2	2	3
4	2	3	3	3	4	3	3	3	5	5	4	4	4	3	5	2	3	6	3	2	3	3	3	5	4
5	6	7	6	6	5	5	4	3	4	3	2	2	2	3	3	2	2	1	2	2	2	1	1	1	3
6	1	2	4	2	1	1	1	1	2	2	2	2	2	2	2	2	2	2	2	3	3	3	2	1	2
7	1	2	2	2	2	2	2	2	3	3	4	4	8	8	8	6	5	4	2	2	3	2	2	4	3
8	5	4	3	2	2	2	2	2	2	3	5	4	4	3	3	3	3	3	4	4	4	4	4	4	3
9	4	2	1	1	1	1	1	1	1	1	2	2	2	2	1	1	1	1	1	2	1	2	2	1	1
10	2	1	1	1	1	2	1	1	3	4	6	9	10	9	6	4	4	4	8	6	4	4	3	2	4
11	2	2	1	2	2	2	2	2	4	5	5	7	12	9	4	3	2	3	4	3	3	2	2	3	4
12	3	3	3	3	3	2	3	3	3	8	11	8	5	3	4	3	2	2	2	1	2	2	1	2	3
13	2	2	1	2	1	2	2	1	2	2	2	3	2	3	2	3	2	2	2	1	2	4	3	4	2
14	4	4	3	3	4	3	3	3	5	9	11	13	7	5	4	5	6	6	5	4	5	4	3	2	5
15	2	2	2	2	2	2	2	2	2	6	8	6	6	8	5	5	6	5	4	3	4	4	3	4	4
16	4	4	5	6	6	7	9	13	16	16	15	13	12	11	10	9	11	11	10	10	9	7	7	7	10
17	6	8	9	8	8	7	8	8	8	8	9	8	7	7	7	7	7	6	5	6	7	6	7	7	7
18	7	6	6	6	6	7	7	6	8	10	9	8	8	8	8	8	8	8	6	8	9	6	6	7	7
19	7	8	8	6	5	6	4	5	5	6	7	7	7	5	4	5	5	2	2	9	17	12	12	13	7
20	16	14	13	12	11	11	13	12	13	14	10	8	7	3	2	3	2	1	2	4	4	3	3	3	8
21	3	4	4	3	3	2	2	2	3	5	5	6	5	5	4	7	4	4	3	5	5	T	T	T	4
22	T	T	T	T	T	T	T	T	T	T	T	T	3	4	3	4	3	3	4	3	3	6	5	3	
23	4	3	3	3	2	2	2	3	5	9	11	6	5	4	4	7	5	4	3	2	2	3	3	5	4
24	7	6	5	4	4	4	4	5	8	13	15	10	16	10	8	20	20	14	12	15	12	8	10	7	10
25	5	6	16	16	8	4	2	2	2	3	2	2	4	4	5	4	3	4	4	3	3	4	3	2	5
26	2	2	3	2	2	2	2	3	5	7	6	6	8	5	6	9	12	12	12	13	12	11	10	10	7
27	10	10	10	9	7	7	6	8	8	6	3	3	4	3	5	5	4	3	3	3	3	2	2	2	5
28	2	1	2	1	1	1	2	2	4	5	5	5	5	5	6	4	3	4	3	4	3	2	2	3	3
29	4	4	3	2	2	2	1	3	4	7	6	6	5	4	5	5	4	4	5	5	5	6	4	4	4
30	4	5	5	4	2	1	1	2	3	5	5	6	5	5	4	4	8	12	8	5	4	4	4	4	5
31	5	4	4	3	2	2	2	2	2	3	3	4	10	5	5	7	7	4	3	6	6	5	4	4	4

MONTHLY STATISTICS:

GEOM	ARITH-----PERCENTILES-----										RANGE-----		STN GEOM	PERCENT	NO. OF TIMES	
MEAN	MEDIAN	MEAN	50	90	95	98	99	1-HR		24-HR		DEVIATION	VALID DATA	ABOVE	LIMIT	LEVEL
4	4	5	4	9	12	13	16	1	-	20	1	-	10	2	98	0

- NOTES: 1. FLAGS FOR INVALID DATA :
- D: DYNAMIC CALIBRATION
 - T: TELEMETRY/DATALOGGR FAULT
 - M: MAINTENANCE OR ANALYZER FAULT
 - P: POWER FAILURE

THE HONGKONG ELECTRIC COMPANY, LTD.
AIR QUALITY DATA MONTHLY TIME SERIES REPORT
MONTH: DECEMBER

STATION : CHEUNG CHAU
POLLUTANT : NITROGEN DIOXIDE

YEAR : 2015
UNIT : MICROGRAMS/CUBIC METER

DAY	1	2	3	4	5	6	7	8	9	10	11	12	13	14	15	16	17	18	19	20	21	22	23	24	MEAN
1	42	14	16	12	12	9	8	17	16	16	18	9	7	8	6	6	7	7	10	13	7	5	7	9	12
2	10	M	7	7	10	10	10	16	14	9	7	6	6	4	7	11	14	15	20	18	27	18	21	70	15
3	67	40	20	24	18	21	26	23	26	37	46	43	45	52	55	46	27	24	27	38	52	51	31	37	37
4	39	38	30	27	30	30	31	37	37	42	32	37	41	34	25	38	45	33	24	34	39	25	22	17	33
5	23	23	28	23	23	17	16	23	20	12	9	11	18	30	51	41	42	36	32	29	33	29	26	33	26
6	36	45	41	40	33	34	24	20	19	20	20	20	23	25	30	37	42	44	32	30	34	35	36	29	31
7	31	29	24	21	19	17	22	25	27	31	36	38	40	49	55	63	72	79	64	59	53	39	37	39	40
8	44	29	28	20	18	16	24	30	35	50	47	47	43	38	57	62	67	70	72	70	65	62	57	55	46
9	57	45	42	17	12	25	34	17	15	31	53	49	47	45	38	36	38	45	43	52	49	60	51	53	40
10	52	53	53	48	49	42	38	42	41	36	38	40	45	52	39	40	82	83	110	94	72	74	58	34	55
11	29	28	25	27	28	28	32	33	35	30	29	36	40	29	12	9	7	12	22	17	19	14	16	18	24
12	18	12	19	12	16	19	13	26	25	24	31	25	13	8	15	11	7	8	7	11	11	9	13	22	16
13	19	14	13	15	12	16	12	10	10	10	15	12	15	14	14	20	16	39	33	12	44	19	16	76	20
14	61	32	28	31	26	29	35	22	46	54	48	50	51	50	54	63	80	81	74	54	64	50	39	32	48
15	27	32	30	24	21	21	24	36	37	43	48	45	46	50	64	70	66	67	65	60	61	32	26	27	43
16	17	M	18	18	17	21	19	24	27	27	30	26	21	23	24	27	35	35	28	32	38	30	23	22	25
17	20	22	20	13	12	14	18	24	25	31	25	23	24	28	34	35	42	39	45	43	34	38	45	41	29
18	41	35	26	22	20	26	31	38	40	46	46	41	40	40	31	37	50	60	69	70	86	70	68	50	45
19	35	38	44	29	27	33	34	38	38	48	52	47	51	56	66	72	72	52	66	79	78	71	73	77	53
20	74	54	44	38	47	63	79	89	86	92	79	82	73	74	68	71	66	68	77	81	80	82	82	74	72
21	72	70	66	57	52	39	42	45	51	61	40	36	33	19	17	27	52	38	22	22	19	T	T	T	42
22	T	T	T	T	T	T	T	T	T	T	T	19	29	11	20	12	20	54	16	59	82	26	48		
23	65	60	46	42	34	36	49	56	58	69	71	27	30	30	22	29	23	45	33	19	20	25	53	73	42
24	90	86	76	68	63	48	32	61	60	52	29	20	28	19	16	35	42	55	63	64	61	60	65	63	52
25	48	43	40	37	36	27	20	21	22	28	29	27	32	44	52	48	45	60	66	56	51	46	43	39	40
26	41	44	42	33	32	30	31	34	33	50	43	47	51	30	41	72	88	87	82	78	78	77	72	74	54
27	74	69	66	64	60	58	52	49	46	43	39	41	43	49	69	72	79	76	81	75	65	54	54	36	59
28	29	23	18	15	15	25	25	32	38	42	35	37	40	38	42	45	35	29	20	26	18	16	16	49	30
29	45	40	36	15	9	8	20	19	19	26	18	23	18	19	12	14	8	12	22	21	19	31	49	53	23
30	48	M	46	39	35	31	35	37	34	46	49	44	47	49	46	56	85	100	96	31	58	47	50	48	50
31	45	36	39	38	31	22	25	27	26	28	33	38	44	28	25	38	49	25	17	24	27	32	22	18	31

MONTHLY STATISTICS:

GEOM	ARITH-----PERCENTILES-----										RANGE-----		STN GEOM	PERCENT	NO. OF TIMES	
MEAN	MEDIAN	MEAN	50	90	95	98	99	1-HR		24-HR		DEVIATION	VALID DATA	ABOVE	LIMIT	LEVEL
32	35	38	35	69	76	82	88	4	-	110	12	-	72	2	98	0

- NOTES: 1. FLAGS FOR INVALID DATA :
- D: DYNAMIC CALIBRATION
 - T: TELEMETRY/DATALOGGR FAULT
 - M: MAINTENANCE OR ANALYZER FAULT
 - P: POWER FAILURE

Appendix C Summary Results on Water Quality Monitoring

LAMMA POWER STATION FGD WASTEWATER TREATMENT PLANT EFFLUENT DISCHARGE TO ASH LAGOON SUSPENDED SOLIDS AND PH

Period : October – December 2015

Week Ending	No. of Samples	Suspended Solids, mg/L			pH		
		Maximum	Minimum	Average	Maximum	Minimum	Average
03/10/15	5*	15	10	13	8.1	7.9	8.0
10/10/15	7	22	10	15	8.2	8.1	8.2
17/10/15	7	23	9	15	8.1	8.0	8.1
24/10/15	2*	16	15	16	8.2	8.2	8.2
31/10/15	4*	22	13	18	8.1	8.0	8.1
07/11/15	4*	20	12	16	8.2	8.1	8.1
14/11/15	5*	21	13	17	8.2	8.0	8.1
21/11/15	4*	18	9	14	8.2	8.1	8.2
28/11/15	5*	21	10	15	8.2	8.0	8.1
05/12/15	3*	19	11	15	8.2	8.2	8.2
12/12/15	5*	22	11	16	8.2	8.0	8.1
19/12/15	7	20	13	16	8.2	8.1	8.2
26/12/15	4*	22	10	16	8.1	8.0	8.1

Remark :

* - No sampling for the remaining day(s) of the week / no sampling due to no discharge

LAMMA POWER STATION
FGD WASTEWATER TREATMENT PLANT
EFFLUENT DISCHARGE TO ASH LAGOON
TRACE METAL, TOTAL PHOSPHORUS
AND TOTAL NITROGEN ANALYSIS

Period : October – December 2015

Sampling date		6/10/2015	3/11/2015	8/12/2015
Barium,	ug/L	<150	<150	<150
Mercury,	ug/L	<0.5	2.1	<0.5
Cadmium,	ug/L	1	1	<1
Iron,	ug/L	<400	<400	<400
Total Phosphorous,	mg/L	<0.8	<0.8	<0.8
Total Nitrogen,	mg/L	52	62	64
Cyanide,	mg/L	0.01	<0.01	0.02

Remark:

According to the WPCO Ash Lagoon Discharge Licence, contents at exact levels of trace metals below 1/10 th of the WPCO Licence permitted limits will not be reported. When the concentration of a metal exceeds 1/10 th of the limit, the exact value of the metal concentration will be reported.

Appendix D Summary of EMIS

EM&A Log Ref.	Mitigation Measures	Implementation Status
	GENERAL	
A1	No other process, except the Wet Limestone-Gypsum process used in the FGD plants of the coal-fired Units L6, L7 and L8 within the Lamma Power Station, shall be used in the FGD plants for the projects unless otherwise agreed by EPD.	Complied
	WATER QUALITY	
B1	All wastewater arising from the operation of the projects shall be collected and directed to the existing wastewater treatment plant within the Lamma Power Station for treatment.	Complied
B2	The operational plant effluent from the FGD plants should be reused as much as possible in order to minimise discharge to the WWTP.	Complied
B3	Maintenance of the WWTP should be performed regularly to ensure the effluent from the WWTP would not exceed the current requirements stipulated in the WPCO licence for Ash Lagoon.	Complied
	WASTE	
C1	No gypsum or sludge arising from the operation of the projects shall be disposed of anywhere. All gypsum and sludge shall be collected and reused.	Complied
	NOISE	
D1	Equipment including the Absorber Recirculation Pump, Oxidation Air Blower, Booster Fan and Booster Fan Motor of the FGD plants shall be acoustically insulated and the Gas-Gas Heater (untreated side) of the FGD plants shall be provided with reinforced lagging to reduce the noise impact.	Complied