

香港電燈有限公司
The Hongkong Electric Co., Ltd.



**Lamma Power Station
Units L2, L4 & L5 Flue Gas Desulphurization
Plants Retrofit**

Operational Phase

Quarterly Environmental Monitoring & Audit Report

July – September 2016

香港電燈有限公司
The Hongkong Electric Co., Ltd.



ENVIRONMENTAL IMPACT ASSESSMENT (EIA) ORDINANCE, CAP. 499

ENVIRONMENTAL PERMITS NO. EP-248/2006 & EP-287/2007

LAMMA POWER STATION
UNITS L2, L4 & L5 FLUE GAS DESULPHURIZATION PLANTS RETROFIT

ENVIRONMENTAL MONITORING & AUDIT PROGRAMME
AT OPERATIONAL PHASE


Report Title	Quarterly EM&A Report (April to June 2016)
Date	19 December 2016
Certified by	 (Mr. IP Tat-Yan, Environmental Team Leader)

TABLE OF CONTENT

EXECUTIVE SUMMARY

1.	INTRODUCTION.....	1
1.1	Background	1
1.2	Project Organisation	2
1.3	Plant Availability during the Reporting Period	2
1.4	Malfunction/Outage Records of Pollution Control Equipment	2
1.5	Summary of EM&A Requirements	4
2.	AIR QUALITY.....	12
2.1	Monitoring Requirements	12
2.2	Summary of Results and Observations	12
3.	WATER QUALITY	13
3.1	Monitoring Requirements	13
3.2	Summary of Results and Observations	13
4.	ENVIRONMENTAL AUDIT	14
4.1	Review of Environmental Monitoring Procedures	14
4.2	Assessment of Environmental Monitoring Results	14
4.3	Status of Environmental Licensing and Permitting	16
4.4	Implementation Status of Environmental Mitigation Measures	16
4.5	Implementation Status of Event/Action Plan	16
4.6	Implementation Status of Environmental Complaint Handling Procedures	16
5.	FUTURE KEY ISSUES.....	18
5.1	Outage Plan for the coming 3 months	18
5.2	Key issues for the coming 3 months	18
6.	CONCLUSION	19

LIST OF TABLES

Table 2.1	Air Quality Monitoring Parameters and Frequency
Table 3.1	Water Quality Monitoring Parameters and Frequencies
Table 4.1	Summary of Action/Limit Level Exceedances on Monitoring Parameters
Table 4.2	Amount of Gypsum and Sludge Collected for Reuse by Contractor
Table 4.3	Summary of Environmental Licensing and Permit Status
Table 4.4	Environmental Complaints Received
Table 4.5	Outstanding Environmental Complaints Carried Over

LIST OF FIGURES

- Figure 1.1a Location of New Facilities for L4 & L5 FGD Plant
- Figure 1.1b Location of New Facilities for L2 FGD Plant
- Figure 1.2a General Arrangement of L4 & L5 FGD Plant
- Figure 1.2b General Arrangement of L2 FGD Plant
- Figure 1.3 Schematic Diagram of L2, L4 & L5 FGD Plant
- Figure 1.4 Simplified Schematic Diagram of FGD Wastewater Treatment Plant
- Figure 1.5 Organization Chart at Operational Phase

APPENDIX

- Appendix A Event/Action Plans in Response to Exceedance of AL Levels
- Appendix B Air Quality Monitoring Results
- Appendix C Summary Results on Water Quality Monitoring
- Appendix D Summary of EMIS

EXECUTIVE SUMMARY

This is the quarterly Environmental Monitoring and Audit (EM&A) report for the Projects “Lamma Power Station Units L4 & L5 Flue Gas Desulphurization Plant Retrofit” and “Lamma Power Station Unit L2 Flue Gas Desulphurization Plant Retrofit” prepared by the Environmental Team (ET). This report presents the results of impact monitoring on air and water quality and environmental audit for the operation of the said projects in the period from July to September 2016.

Environmental monitoring for air quality and water quality were carried out for the purpose of this EM&A program as well as for fulfilling the requirements stipulated in the relevant licences. The results were checked against the established Action/Limit (AL) levels. The implementation status of the environmental mitigation measures, Event/Action Plan and environmental complaint handling procedures were also checked.

Plant Availability

Units L2, L4 and L5 were out of service during the following period:

Unit	Period	Remark
L2	11/07/2016 20:25 to 12/07/2016 08:29	Defect rectification
L2	06/08/2016 15:05 to 08/08/2016 06:43	Defect rectification
L2	11/08/2016 19:00 to 12/08/2016 01:30	Defect rectification
L2	27/08/2016 09:00 to 31/08/2016 05:00	Defect rectification
L2	10/09/2016 00:01 to 10/09/2016 18:22	Defect rectification
L4	08/07/2016 21:35 to 11/07/2016 06:06	Defect rectification
L4	01/08/2016 20:33 to 05/08/2016 20:14	Defect rectification
L5	22/07/2016 21:22 to 25/07/2016 05:42	Defect rectification

Malfunction/Outage Records of Pollution Control Equipment

Major outages of the Pollution Control Equipment during the reporting period are listed below:

Equipment	Period	Cause	Actions Taken
L2 FGD	03:15 18/07/2016 to 20:06 20/07/2016	FGD plant GGH washing and defect rectification	EPD was informed by letter on 22/07/2016
L4 FGD	19/08/2016 19:01 to 19:58	Emergency shut down due to failure of major auxiliary equipment	EPD was informed by letter on 24/08/2016
L4 FGD	01:13 29/08/2016 to 19:40 01/09/2016	FGD plant GGH washing and defect rectification	EPD was informed by letter on 05/09/2016
L5 FGD	00:04 12/09/2016 to 20:14 15/09/2016	FGD plant GGH washing and defect rectification	EPD was informed by letter on 20/09/2016

For other minor outages, please refer to section 1.4 of the report.

Environmental Monitoring Works

Environmental monitoring works were performed during the operation of Units L2, L4 and L5 FGD Plants in the reporting period.

Air Quality

No exceedance of Action and Limit levels for air quality were recorded in the reporting period.

Water Quality

No exceedance of Action and Limit levels for water quality were recorded in the reporting period.

Environmental Licensing and Permitting

Description	Permit / Licence No.	Valid Period		Issued To	Date of Issuance
		From	To		
Environmental Permit for L4/5 FGD plants retrofit project	EP-248/2006	25/04/2006	-	HK Electric	25/04/2006
Environmental Permit for Unit L2 FGD plant retrofit project	EP-287/2007	02/10/2007	-	HK Electric	02/10/2007
Specified Process Licence issued under APCO	L-7-002(10)	01/01/2015	31/12/2016	HK Electric	23/12/2014
WPCO discharge licence for Ash Lagoon	WT00011131-2011	15/12/2011	31/12/2016	HK Electric	15/12/2011

Implementation Status of Environmental Mitigation Measures

Environmental mitigation measures were implemented in the reporting period.

Environmental Complaints

There was no environmental complaint against the operation of Lamma Power Station during the reporting period.

Future key issues

Key issues to be considered in the coming months include:

Air Impact

- To continuously carry out the air quality monitoring for Units L2, L4 and L5.

Water Impact

- To continuously carry out the water quality monitoring for FGD WWT plant.

Concluding Remarks

The environmental performance of the projects was generally satisfactory.

1. INTRODUCTION

The Environmental Team (hereinafter called the “ET”) was formed within The Hongkong Electric Co. Ltd (HK Electric) to undertake Environmental Monitoring and Audit for the “Operation of Lamma Power Station Units L4 & L5 Flue Gas Desulphurization Plant Retrofit Project” under the requirements of Clause 2.18 of Environmental Permit (EP) No. EP-248/2006 and “Operation of Lamma Power Station Unit L2 Flue Gas Desulphurization Plant Retrofit Project” under the requirements of Clause 2.10 of Environmental Permit (EP) No. EP-287/2007.

This report summarizes the environmental monitoring and audit work for the said Projects for the period from July to September 2016.

1.1 Background

The Projects involves retrofitting the three existing coal-fired generating Units L2, L4 and L5 of Lamma Power Station with Flue Gas Desulphurisation (FGD) plants for reducing sulphur dioxide emissions in support of Government policy to improve the air quality of the Pearl River Delta.

The Projects include the installation and operation of FGD plants with flue gas desulphurization efficiency of 90% for the three coal-fired Units L2, L4 & L5 to reduce the overall SO₂ emissions from Lamma Power Station. The process adopted for the FGD plants is “Wet Limestone-Gypsum”, a technology which has already been used in, and proved effective and reliable for the existing coal-fired units L6, L7 & L8. The flue gas from the boiler is directed to the FGD absorber inside which removal of SO₂ is take place by reaction with limestone slurry. After passing through the absorber, the treated flue gas is heated up by a gas-gas heater to over 80°C at boiler rated capacity and directed back to the existing chimney for discharge to the atmosphere. [Figure 1.1a](#), [Figure 1.1b](#), [Figure 1.2a](#), [Figure 1.2b](#) and [Figure 1.3](#) show the location and schematic of the FGD plants.

Wastewater filtrated from the reacted limestone slurry, i.e. gypsum slurry, is produced and it is directed to the existing FGD wastewater treatment plant (WWTP). The FGD WWTP is designed to treat the effluent from FGD plants by alkalization, precipitation and neutralization processes. The schematic diagram of the FGD WWTP is illustrated in [Figure 1.4](#).

The additional equipment for the FGD Plants retrofit projects for Units L2, L4 and L5 includes:

- Three sets of FGD absorbers and associated ductworks
- Three sets of booster fans
- Three sets of gas-gas heaters
- Two FGD Switchgear and Equipment Buildings
- Gypsum dewatering system comprising two sets of hydrocyclones and belt filters

1.2 Project Organisation

The management structure to oversee the Projects includes the following:

- Environmental Protection Department (The Authority);
- General Manager (Corporate Development) (The official contact person between HK Electric and EPD);
- Environmental Team Leader (ET Leader);
- Environmental Team (ET).

The organization chart for the Operation EM&A programme is shown in [Figure 1.5](#).

1.3 Plant Availability during the Reporting Period

Units L2, L4 and L5 were out of service during the following period:

Unit	Period	Remark
L2	11/07/2016 20:25 to 12/07/2016 08:29	Defect rectification
L2	06/08/2016 15:05 to 08/08/2016 06:43	Defect rectification
L2	11/08/2016 19:00 to 12/08/2016 01:30	Defect rectification
L2	27/08/2016 09:00 to 31/08/2016 05:00	Defect rectification
L2	10/09/2016 00:01 to 10/09/2016 18:22	Defect rectification
L4	08/07/2016 21:35 to 11/07/2016 06:06	Defect rectification
L4	01/08/2016 20:33 to 05/08/2016 20:14	Defect rectification
L5	22/07/2016 21:22 to 25/07/2016 05:42	Defect rectification

1.4 Malfunction/Outage Records of Pollution Control Equipment

Equipment	Period	Cause	Actions Taken
L2 FGD	08/07/2016 03:10 to 03:14	Routine dampers checking	EPD was informed on 03/08/2016

Equipment	Period	Cause	Actions Taken
L5 FGD	09/07/2016 03:09 to 03:21	Routine dampers checking	EPD was informed on 13/07/2016
L5 FGD	16/07/2016 03:08 to 03:11	Routine dampers checking	EPD was informed on 19/07/2016
L2 FGD	03:15 18/07/2016 to 20:06 20/07/2016	FGD plant GGH washing and defect rectification	EPD was informed by letter on 22/07/2016
L4 FGD	23/07/2016 02:02 to 02:09	Routine dampers checking	EPD was informed on 26/07/2016
L2 FGD	29/07/2016 04:40 to 04:45	Routine dampers checking	EPD was informed on 03/08/2016
L5 FGD	06/08/2016 02:18 to 02:24	Routine dampers checking	EPD was informed on 10/08/2016
L4 FGD	13/08/2016 02:04 to 02:09	Routine dampers checking	EPD was informed on 16/08/2016
L5 FGD	13/08/2016 02:10 to 02:12	Routine dampers checking	EPD was informed on 16/08/2016
L4 FGD	19/08/2016 19:01 to 19:58	Emergency shut down due to failure of major auxiliary equipment	EPD was informed by letter on 24/08/2016
L5 FGD	20/08/2016 02:45 to 02:57	Routine dampers checking	EPD was informed by letter on 23/08/2016
L2 FGD	26/08/2016 00:41 to 00:44	Routine dampers checking	EPD was informed on 31/08/2016
L4 FGD	27/08/2016 02:49 to 02:58	Routine dampers checking	EPD was informed on 31/08/2016
L5 FGD	27/08/2016 03:02 to 03:08	Routine dampers checking	EPD was informed on 31/08/2016
L4 FGD	01:13 29/08/2016 to 19:40 01/09/2016	FGD plant GGH washing and defect rectification	EPD was informed by letter on 05/09/2016
L5 FGD	03/09/2016 02:25 to 02:32	Routine dampers checking	EPD was informed by letter on 05/09/2016
L5 FGD	00:04 12/09/2016 to 20:14 15/09/2016	FGD plant GGH washing and defect rectification	EPD was informed by letter on 20/09/2016
L5 FGD	24/09/2016 02:20 to 02:23	Routine dampers checking	EPD was informed by letter on 27/09/2016

1.5 Summary of EM&A Requirements

Environmental Monitoring and Audit (EM&A) requirements have been discussed in the Environmental Impact Assessment (EIA) Report/ Project Profile for the Projects. The assessment results indicate that environmental monitoring works required for the EM&A programmes of these Projects are already in place or would be implemented under Lamma Power Station Extension Environmental Permit or environmental licenses for the operation of the existing Lamma Power Station. Such monitoring works are considered adequate for the Projects and no additional EM&A activities are required. Hence, environmental monitoring for air quality and water quality are carried out for the purpose of this EM&A program as well as for fulfilling the requirements stipulated in the relevant licences.

The EM&A monitoring work for air and water quality are described in [Section 2](#) and [Section 3](#) respectively.

The following environmental audits are summarized in [Section 4](#) of the report:

- Environmental monitoring results;
- The status of environmental licensing and permits for the Projects;
- The implementation status of environmental protection and pollution control / mitigation measures.

The future key issues for the Projects will be reported in [Section 5](#) of this report.

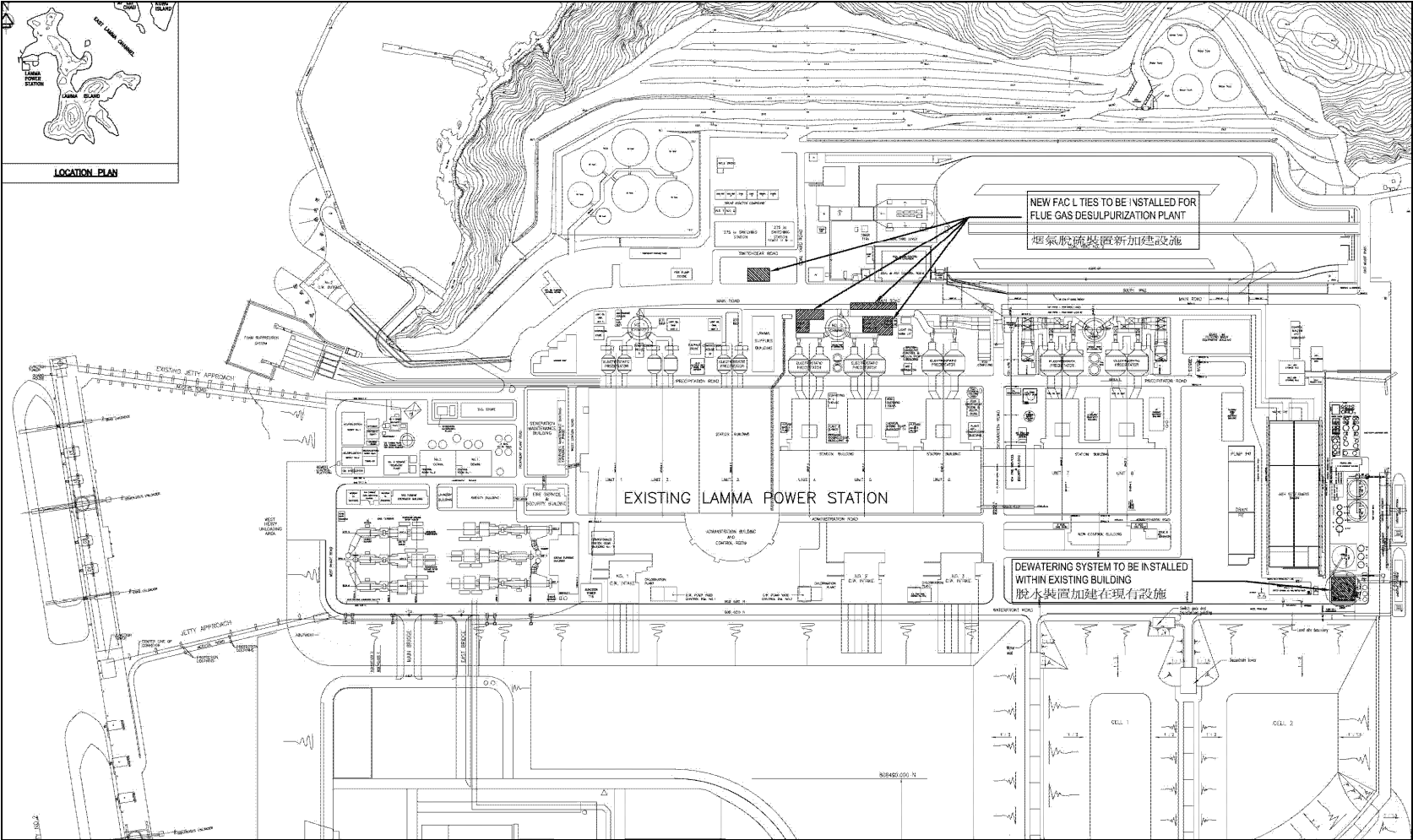


Figure 1.1a Location of New Facilities for L4 & L5 FGD Plants

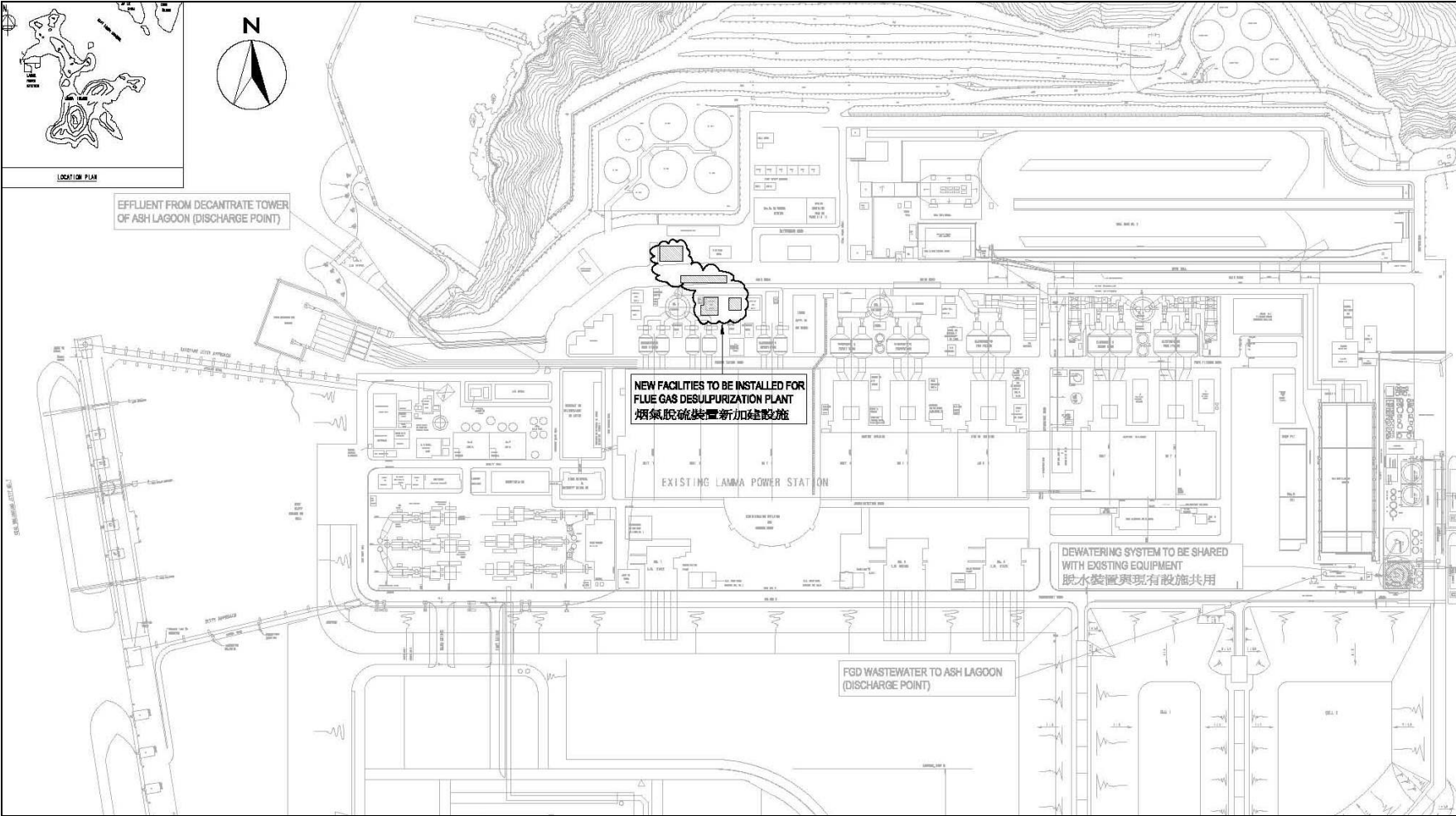


Figure 1.1b Location of New Facilities for L2 FGD Plant

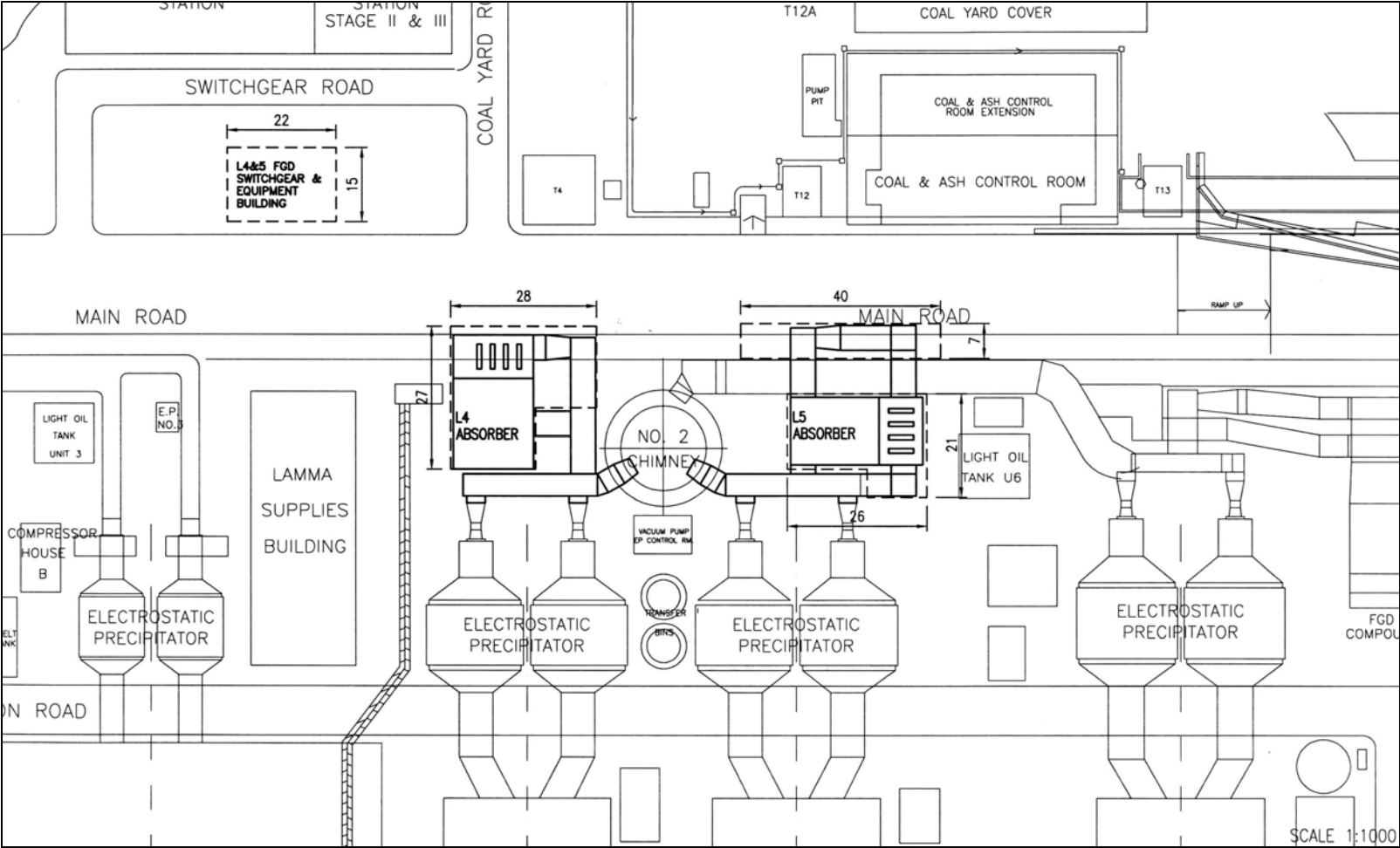


Figure 1.2a General Arrangement of L4 & L5 FGD Plants

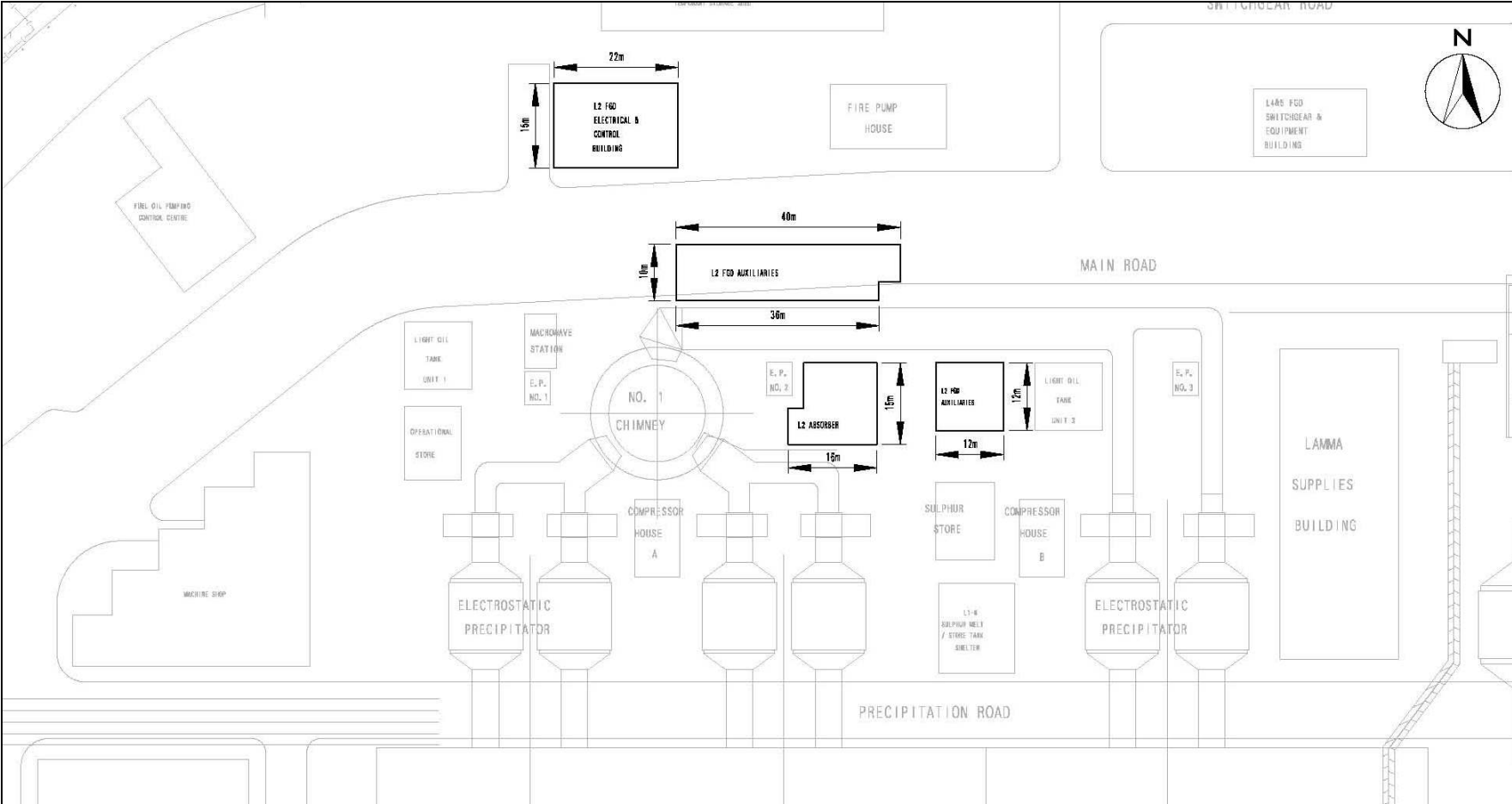


Figure 1.2b General Arrangement of L2 FGD Plant

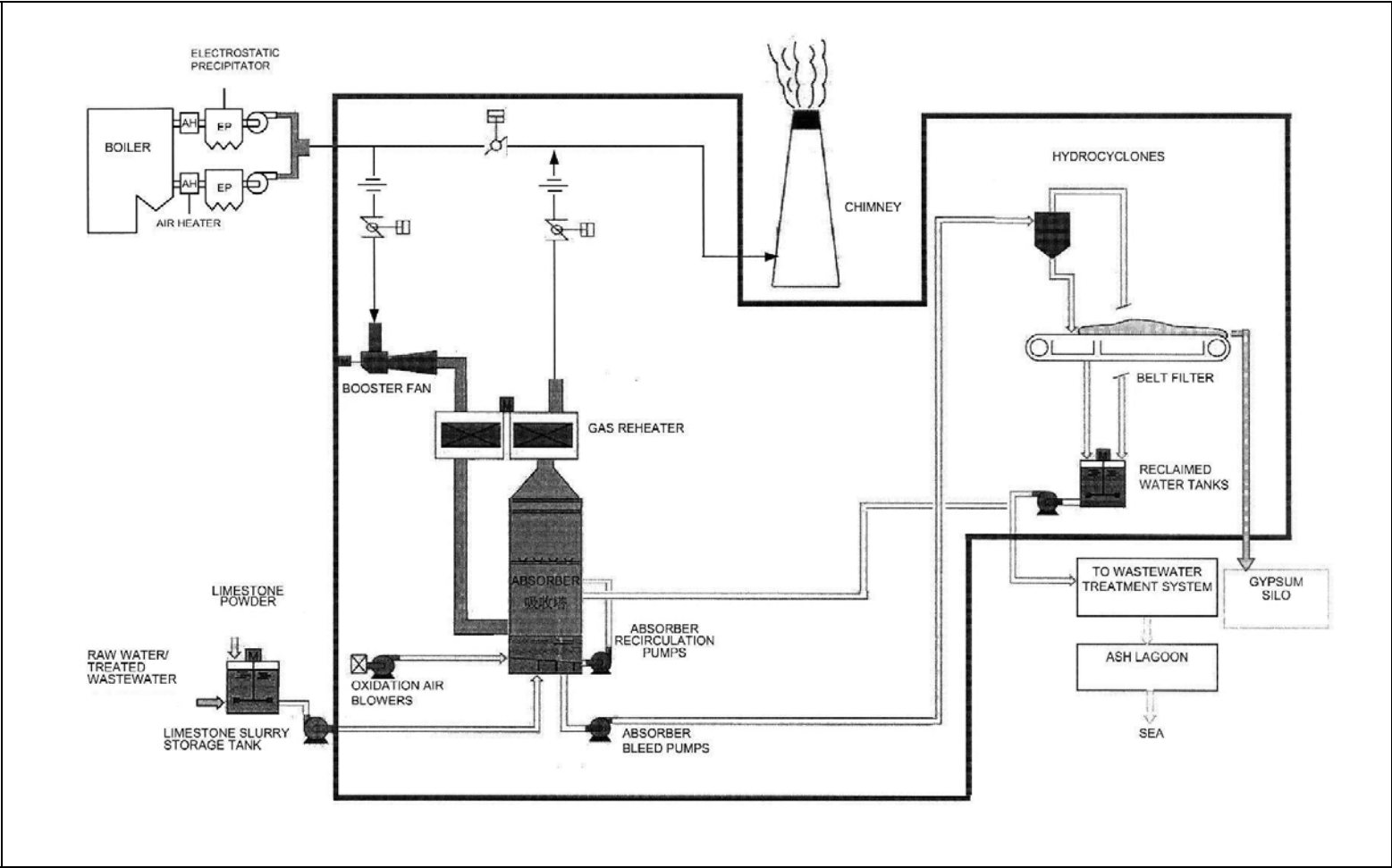


Figure 1.3 Schematic Diagram of the L2, L4 & L5 FGD Plant

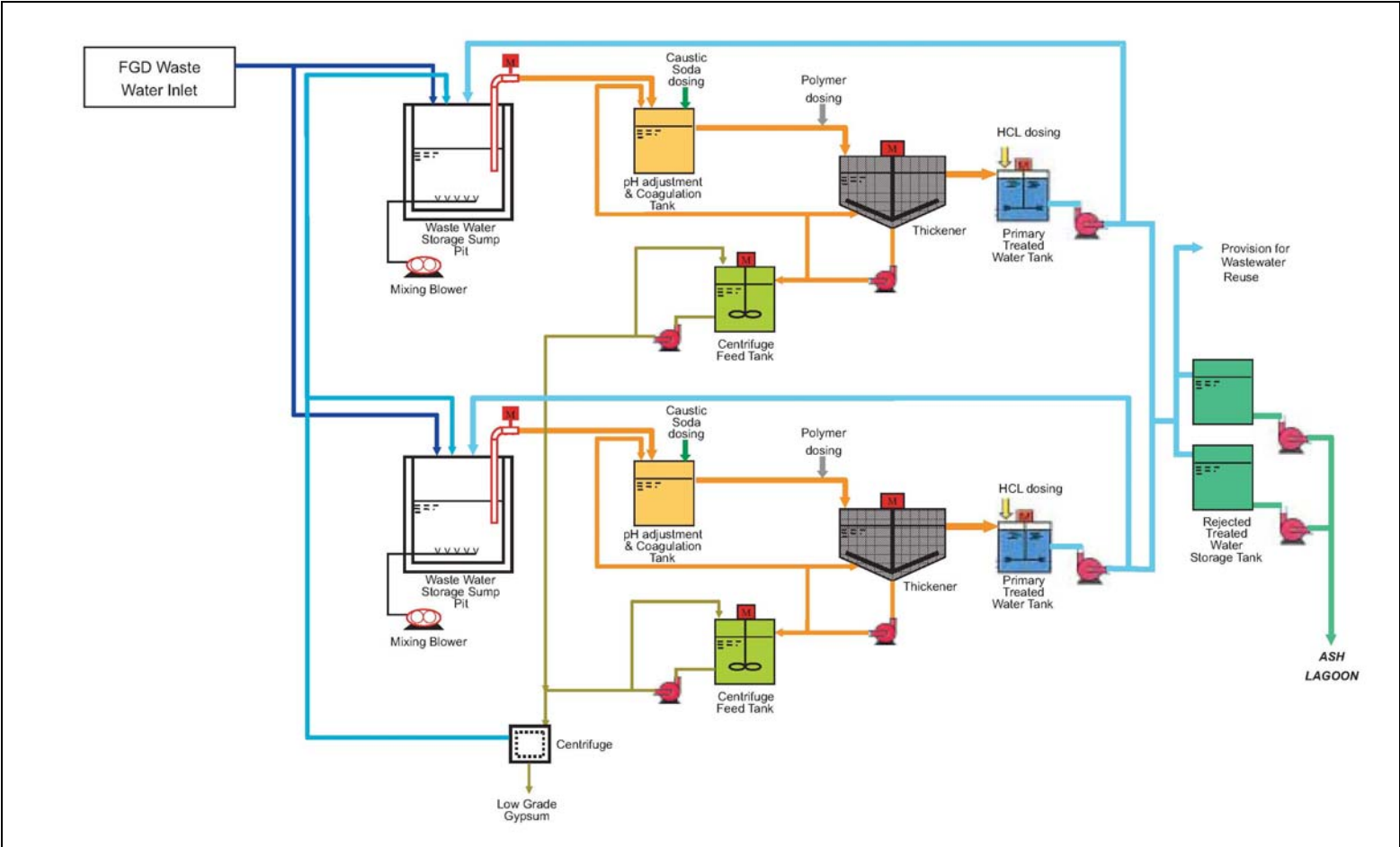


Figure 1.4 Simplified Schematic Diagram of FGD Wastewater Treatment Plant

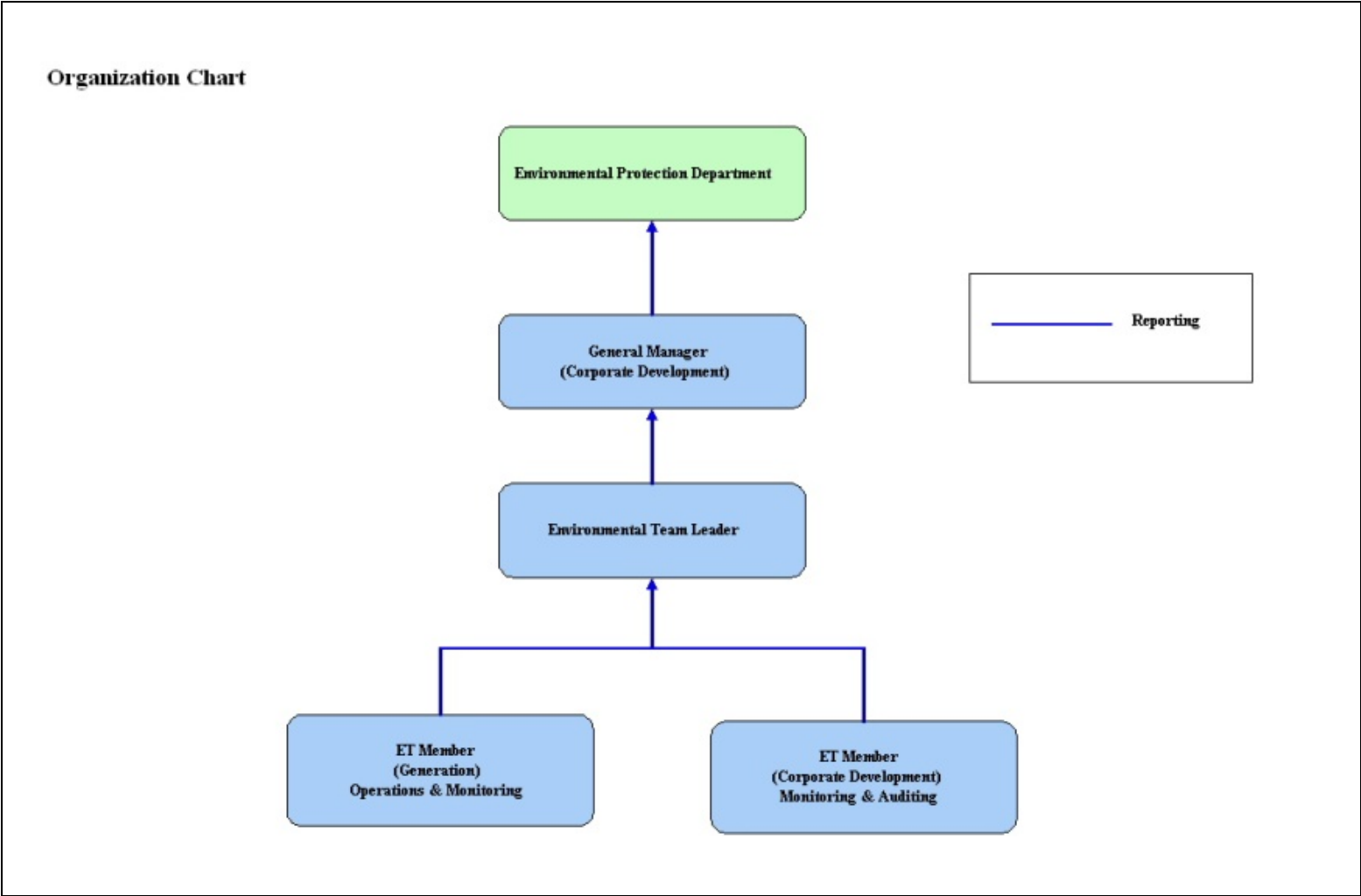


Figure 1.5 Organization Structure at Operational Phase of the Projects

2. AIR QUALITY

2.1 Monitoring Requirements

Since the Projects will bring a general air quality improvement, no additional EM&A activities are considered required, besides those already in place, such as those required by specified process licenses for the operation of the existing Lamma Power Station. In accordance with the requirements stipulated in the Specified Processes Licence issued under Air Pollution Control Ordinance, various operation parameters as stated in [Table 2.1](#) were monitored and checked against the Action/Limit Levels shown in [Appendix A](#).

Table 2.1 Air Quality Monitoring Parameters and Frequency

Sources of Emission	Parameter	Frequency
Steam boilers L2, L4 & L5	Particulate	Once / year
	Particulate (Opacity)	Continuous
	SO ₂	Continuous
	NO _x expressed as NO ₂ (For L4 and L5 only)	Continuous
Fugitive Dust (Coal, PFA, Limestone, gypsum)	Total Suspended Particulate	Once every six days
Chimney emissions	Ambient air	Continuous at existing ambient air monitoring stations
	SO ₂	
	NO ₂	

2.2 Summary of Results and Observations

Monitoring of various parameters as listed in [Table 2.1](#) above was conducted during the operation of Units L2, L4 and L5 in the reporting period. Ambient air monitoring at Ap Lei Chau was temporary suspended since 1/6/2016 for the replacement of the aged shelter of the station. A summary of monitoring data is shown in [Appendix B](#).

No Action/Limit Level exceedance was recorded in the reporting period.

3. WATER QUALITY

3.1 Monitoring Requirements

According to the EIA Report/ Project Profile for the Projects, the current monitoring programme for the Lamma Power Station can cover the Projects and no additional EM&A measures are required besides those already in place. Hence, the EM&A work on water quality should strictly follow the relevant monitoring requirements stipulated in the discharge licence for Ash Lagoon issued under the Water Pollution Control Ordinance (WPCO).

Water quality monitoring was carried out for FGD Waste Water Treatment Plant (WWTP) in the reporting period. The parameters stated in [Table 3.1](#) were monitored and checked against the Action/Limit Levels as given in [Appendix A](#).

Table 3.1 Water Quality Monitoring Parameters and Frequencies

Item	Parameters	Frequencies
1	pH	Daily
2	Suspended Solids	Daily
3	Iron	Monthly
4	Barium	Monthly
5	Mercury	Monthly
6	Cadmium	Monthly
7	Cyanide	Monthly
8	Total Phosphorus	Monthly
9	Total Nitrogen	Monthly

3.2 Summary of Results and Observations

Monitoring of various parameters as listed in [Table 3.1](#) above was carried out during the discharge of the WWTP in the reporting period. A summary of the data is shown in [Appendix C](#).

The data recorded for the monitoring parameters were all below their corresponding Action/Limit Levels. No Action/Limit level exceedance was recorded in the reporting period. The effluent quality was generally satisfactory.

4. ENVIRONMENTAL AUDIT

4.1 Review of Environmental Monitoring Procedures

The environmental monitoring procedures were regularly reviewed by the Environmental Team. No modification to the existing monitoring procedures was recommended.

4.2 Assessment of Environmental Monitoring Results

Monitoring results for Air Quality and Water Quality

The environmental monitoring results for air quality and water quality are presented in [Sections 2](#) and [3](#) respectively are summarized in [Table 4.1](#).

Table 4.1 Summary of Action/Limit Level Exceedances on Monitoring Parameters

Item	Parameter Monitored	Monitoring Period	No. of Exceedances In		Event/Action Plan Implementation Status and Results
			Action Level	Limit Level	
Air					
1	Annual analysis of dust particulate emission rates at chimney stacks.	01/07/16-30/09/16	N.A.	0	Stack PM sampling test for L2 was conducted in the reporting period.
2	Continuous monitoring of opacity, NO _x , SO ₂ and CO ₂ in the flue gas at the chimney stacks	01/07/16-30/09/16	0	0	
3	TSP monitoring at Lamma Power Station Boundary (ie East Gate and Reservoir).	01/07/16-30/09/16	0	0	
4	Ambient SO ₂ & NO _x monitoring at the Peak, Queen Mary Hospital, Victoria Road, Chung Hom Kok, Ap Lei Chau and	01/07/16-30/09/16	0	0	

Item	Parameter Monitored	Monitoring Period	No. of Exceedances In		Event/Action Plan Implementation Status and Results
			Action Level	Limit Level	
	Cheung Chau.				
Water					
1	pH in WWTP Effluent	01/07/16-30/09/16	0	0	
2	Suspended Solids in WWTP Effluent	01/07/16-30/09/16	0	0	
3	Iron in WWTP Effluent	01/07/16-30/09/16	0	0	
4	Barium in WWTP Effluent	01/07/16-30/09/16	0	0	
5	Mercury in WWTP Effluent	01/07/16-30/09/16	0	0	
6	Cadmium in WWTP Effluent	01/07/16-30/09/16	0	0	
7	Cyanide in WWTP Effluent	01/07/16-30/09/16	0	0	
8	Total Phosphorus in WWTP Effluent	01/07/16-30/09/16	0	0	
9	Total Nitrogen in WWTP Effluent	01/07/16-30/09/16	0	0	

Waste Management Records

The quantity of FGD gypsum and sludge collected for reuse by contractor in the reporting period are shown in [Table 4.2](#).

Table 4.2 Amount of Gypsum and Sludge Collected for Reuse by Contractor

Period	Amount of Gypsum Collected	Amount of Sludge Collected
July 2016	8654.0 MT	0 MT
August 2016	5983.0 MT	0 MT
September 2016	4580.0 MT	0 MT

4.3 Status of Environmental Licensing and Permitting

All permits/licenses obtained as of September 2016 are summarised in [Table 4.3](#).

Table 4.3 Summary of Environmental Licensing and Permit Status

Description	Permit / Licence No.	Valid Period		Status
		From	To	
Environmental Permit for Units L4/5 FGD Plants Retrofit	EP-248/2006	25/04/2006	-	Valid
Environmental Permit for Unit L2 FGD Plant Retrofit	EP-287/2007	02/10/2007	-	Valid
Specified Process Licence issued under APCO	L-7-002(10)	01/01/2015	31/12/2016	Valid
WPCO discharge licence for Ash Lagoon	WT00011131-2011	15/12/2011	31/12/2016	Valid

4.4 Implementation Status of Environmental Mitigation Measures

Mitigation measures detailed in the EIA Report and EP are required to be implemented. A summary of the Environmental Mitigation Implementation Schedule (EMIS) is presented in [Appendix D](#).

4.5 Implementation Status of Event/Action Plan

A list of specific actions in the event of exceedances of the various threshold levels for specific emission and discharge sources is given in [Appendix A](#).

As no Action/Limit level exceedance was recorded, no action has been devised.

4.6 Implementation Status of Environmental Complaint Handling Procedures

During the reporting period, there was no environmental complaint against the operation of Lamma Power Station.

Table 4.4 Environmental Complaint(s) Received

Case Reference / Date, Time Received / Date, Time Concerned	Descriptions / Actions Taken	Conclusion / Status
Nil	N/A	N/A

Table 4.5 Outstanding Environmental Complaint(s) Carried Over

Case Reference / Date, Time Received / Date, Time Concerned	Descriptions / Actions Taken	Conclusion / Status
Nil	N/A	N/A

5. FUTURE KEY ISSUES

5.1 Outage Plan for the coming 3 months

Unit / Equipment	Period	Remark
L4	24/10/2016 to 31/12/2016	Unit Overhaul
L5	15/10/2016 to 04/11/2016	Unit Overhaul

5.2 Key issues for the coming 3 months

Key issues to be considered in the coming 3 months include:

Air Impact

- To continuously carry out the air quality monitoring for Units L2, L4 and L5.

Water Impact

- To continuously carry out the water quality monitoring for FGD Waste Water Treatment Plant.

6. CONCLUSION

Environmental monitoring was performed as required in the reporting period from July to September 2016. All monitoring results were checked and reviewed.

No Action/Limit level exceedance on air quality parameters were recorded in the reporting period.

No Action/Limit level exceedance on water quality parameters were recorded in the reporting period.

Environmental mitigation measures recommended in the EIA Report and EP were implemented in the reporting period.

There was no environmental complaint against the operation of Lamma Power Station during the reporting period.

No prosecution was received for the Projects in the reporting period.

The environmental performance of the Projects was generally satisfactory.

Appendix A Event/Action Plans in Response to Exceedance of AL Levels

A.1 Air

Source of Emissions	Parameters to be Monitored	Frequency	Concentration Not to Be Exceeded	Action	Limit	Proposed Action
Steam boilers L2, L4 and L5	Particulate Particulate (Opacity) SO2 NOx expressed as NO2 (For L4 and L5 only)	once/year continuous continuous continuous	50 mg/Nm3 40% (bihourly) 200 mg/Nm3 (1h) 615 mg/Nm3 (1h)	- 35 190 585	50 40 200 615	ET Leader informs Generation Division at action level. Maintenance initiated. Temporary load shift until pollution control equipment repaired and reinstated. Report to EPD.
Fugitive dust (Coal, PFA, limestone, gypsum)	TSP	Once every six days.	260 (µg/m3) (24 hours)	-	260	Investigation of sources and additional dust suppression to be employed at Limit level. Frequency of monitoring to be increased as necessary.
Chimney emissions	Ambient air SO2 NO2	Continuous at existing ambient air monitoring stations	800 (µg/m3) (1h) 300 (µg/m3) (1h)	- -	800 300	ET to review data on post-hoc basis and check for possible power station contribution.

A.2 Water

Source of Discharges	Parameters to be Monitored	Frequency	Concentration Not to Be Exceeded	Action	Limit	Proposed Action
FGD Wastewater Treatment Plant	pH	Daily	6-9	-	6-9	If pH exceeds limit level, consideration to be given to adjust chemical dosing. ET Leader inform Generation Division and investigation be initiated to identify and remedy cause.
	Suspended Solids	Daily	30 mg/L	25	30	
	Iron	Monthly	4 mg/L	3.6	4	For all other parameters except pH, Generation Division to be informed, frequency of monitoring to be increased, and investigations to be initiated to identify cause and remedy if concentration exceeds action level. If problem persists to exceed the limit level, ET Leader verbally informs EPD and ensures remedial actions implemented.
	Barium	Monthly	1.5 mg/L	1.3	1.5	
	Mercury	Monthly	0.005 mg/L	0.0045	0.005	
	Cadmium	Monthly	0.005 mg/L	0.0045	0.005	
	Cyanide	Monthly	0.1 mg/L	0.09	0.1	
	Total Phosphorus	Monthly	8 mg/L	7.2	8	
	Total Nitrogen	Monthly	400 mg/L	360	400	

Appendix B

Air Quality Monitoring Results

B.1 Ambient Total Suspended Particulate Monitoring at Lamma Power Station

Date: Second Quarter of 2016 (July - September)

DATE	TSP CONCENTRATION ($\mu\text{g}/\text{m}^3$)		WEATHER INFORMATION (from Hong Kong Observatory)		
	Reservoir	East Gate	Mean Wind Speed (km/hr)	Prevailing Wind Dir. ($^{\circ}$)	Mean R.H. (%)
02/07/2016	69	46	21.9	200	82
08/07/2016	86	87	23.5	280	75
14/07/2016	38	36	14.3	230	86
20/07/2016	46	28	22.7	220	82
26/07/2016	19	18	17.5	060	84
01/08/2016	92	86	21.3	290	76
07/08/2016	29	30	22.3	250	80
13/08/2016	19	24	12.0	070	84
19/08/2016	46	94	19.9	070	90
25/08/2016	45	40	11.7	060	77
31/08/2016	49	44	8.8	210	78
06/09/2016	15	17	7.3	050	90
12/09/2016	28	29	15.2	030	83
18/09/2016	42	42	12.7	010	66
24/09/2016	43	46	27.6	080	78
30/09/2016	103	108	7.5	010	78

TSP ($\mu\text{g}/\text{m}^3$)

Action Level -
 Limit Level 260

Equipment used: Reservoir & East Gate : High Volume Air Sampler

B.2 Unit L2, L4 and L5 Stack Monitoring at Lamma Power Station

B.2.1 Monthly Summary of Stack NOx and SO2 for Unit L5

Date	Daily Maximum		
	SO2 concentration (mg/Nm3) #	NOx concentration (mg/Nm3) #	Opacity (%)
1/7/2016	23	395	18
2/7/2016	25	372	18
3/7/2016	47	399	22
4/7/2016	42	403	21
5/7/2016	16	427	22
6/7/2016	16	426	23
7/7/2016	17	401	24
8/7/2016	41	407	24
9/7/2016	52	479	24
10/7/2016	72	456	25
11/7/2016	61	397	23
12/7/2016	45	397	21
13/7/2016	25	406	20
14/7/2016	27	417	20
15/7/2016	84	376	22
16/7/2016	68	436	20
17/7/2016	47	382	21
18/7/2016	68	357	21
19/7/2016	82	374	22
20/7/2016	55	433	21
21/7/2016	26	387	22
22/7/2016	28	413	25
23/7/2016	*	*	*
24/7/2016	*	*	*
25/7/2016	85	370	24
26/7/2016	107	387	18
27/7/2016	104	394	19
28/7/2016	94	373	19
29/7/2016	73	412	28
30/7/2016	81	367	28
31/7/2016	85	281	18

Date	Daily Maximum		
	SO2 concentration (mg/Nm3) #	NOx concentration (mg/Nm3) #	Opacity (%)
1/8/2016	80	294	19
2/8/2016	58	412	23
3/8/2016	23	371	27
4/8/2016	21	397	25
5/8/2016	21	360	23
6/8/2016	29	477	24
7/8/2016	18	405	25
8/8/2016	57	382	29
9/8/2016	38	316	26
10/8/2016	60	357	20
11/8/2016	73	394	21
12/8/2016	74	354	27
13/8/2016	73	415	30
14/8/2016	58	369	23
15/8/2016	59	383	26
16/8/2016	71	438	25
17/8/2016	50	377	24
18/8/2016	48	323	25
19/8/2016	64	368	23
20/8/2016	93	291	21
21/8/2016	80	409	20
22/8/2016	85	380	20
23/8/2016	75	408	20
24/8/2016	100	351	20
25/8/2016	139	397	23
26/8/2016	61	406	22
27/8/2016	83	344	20
28/8/2016	130	390	26
29/8/2016	115	437	21
30/8/2016	50	404	19
31/8/2016	36	298	19

Date	Daily Maximum		
	SO2 concentration (mg/Nm3) [#]	NOx concentration (mg/Nm3) [#]	Opacity (%)
1/9/2016	51	285	20
2/9/2016	33	391	20
3/9/2016	40	444	25
4/9/2016	31	435	20
5/9/2016	34	418	28
6/9/2016	61	419	30
7/9/2016	64	370	26
8/9/2016	72	424	19
9/9/2016	65	332	18
10/9/2016	50	474	18
11/9/2016	59	362	17
12/9/2016	FGD Plant Outage	339	19
13/9/2016	FGD Plant Outage	358	19
14/9/2016	FGD Plant Outage	378	20
15/9/2016	20	472	23
16/9/2016	21	314	18
17/9/2016	22	343	22
18/9/2016	28	344	21
19/9/2016	17	376	20
20/9/2016	47	419	22
21/9/2016	24	404	26
22/9/2016	13	348	24
23/9/2016	19	455	25
24/9/2016	33	441	24
25/9/2016	48	395	24
26/9/2016	49	405	27
27/9/2016	24	379	27
28/9/2016	21	328	18
29/9/2016	26	414	28
30/9/2016	42	396	25

Note: # - Hourly average value. Expressed as at 0°C, 101.325kPa, dry and corrected to 12% CO₂ condition.

* - Unit L5 was not on load.

B.2.2 Monthly Summary of Stack NOx and SO2 for Unit L4

Date	Daily Maximum		
	SO2 concentration (mg/Nm3) #	NOx concentration (mg/Nm3) #	Opacity (%)
1/7/2016	54	332	27
2/7/2016	24	343	28
3/7/2016	13	235	30
4/7/2016	23	311	30
5/7/2016	18	321	26
6/7/2016	28	410	26
7/7/2016	19	377	28
8/7/2016	22	388	29
9/7/2016	*	*	*
10/7/2016	*	*	*
11/7/2016	29	367	26
12/7/2016	26	325	23
13/7/2016	33	396	24
14/7/2016	54	302	21
15/7/2016	44	337	21
16/7/2016	73	273	23
17/7/2016	57	265	25
18/7/2016	56	329	26
19/7/2016	49	313	28
20/7/2016	24	313	26
21/7/2016	34	330	26
22/7/2016	60	278	27
23/7/2016	92	282	25
24/7/2016	79	290	27
25/7/2016	96	271	21
26/7/2016	72	392	21
27/7/2016	86	420	17
28/7/2016	95	391	18
29/7/2016	88	380	14
30/7/2016	70	318	10
31/7/2016	68	265	10

Date	Daily Maximum		
	SO2 concentration (mg/Nm3) #	NOx concentration (mg/Nm3) #	Opacity (%)
1/8/2016	68	315	10
2/8/2016	*	*	*
3/8/2016	*	*	*
4/8/2016	*	*	*
5/8/2016	15	238	9
6/8/2016	40	366	11
7/8/2016	58	349	15
8/8/2016	72	378	16
9/8/2016	104	346	16
10/8/2016	113	335	12
11/8/2016	55	315	17
12/8/2016	85	325	19
13/8/2016	72	319	18
14/8/2016	64	405	19
15/8/2016	67	436	25
16/8/2016	62	452	24
17/8/2016	79	416	18
18/8/2016	82	411	18
19/8/2016	56	436	23
20/8/2016	83	314	20
21/8/2016	84	311	17
22/8/2016	127	350	17
23/8/2016	106	338	17
24/8/2016	109	434	21
25/8/2016	130	335	19
26/8/2016	80	344	18
27/8/2016	138	330	18
28/8/2016	96	303	16
29/8/2016	48	360	16
30/8/2016	FGD Plant Outage	432	19
31/8/2016	FGD Plant Outage	247	18

Date	Daily Maximum		
	SO2 concentration (mg/Nm3) [#]	NOx concentration (mg/Nm3) [#]	Opacity (%)
1/9/2016	59	256	26
2/9/2016	64	309	23
3/9/2016	60	469	24
4/9/2016	78	396	23
5/9/2016	45	347	23
6/9/2016	65	353	25
7/9/2016	93	381	22
8/9/2016	75	393	17
9/9/2016	77	357	16
10/9/2016	37	320	17
11/9/2016	*	*	*
12/9/2016	35	320	22
13/9/2016	49	493	26
14/9/2016	25	360	23
15/9/2016	61	357	25
16/9/2016	*	*	*
17/9/2016	34	351	24
18/9/2016	*	*	*
19/9/2016	31	392	24
20/9/2016	47	433	25
21/9/2016	23	422	25
22/9/2016	19	431	25
23/9/2016	27	447	26
24/9/2016	24	377	24
25/9/2016	58	344	27
26/9/2016	41	397	31
27/9/2016	40	409	26
28/9/2016	32	329	20
29/9/2016	63	324	26
30/9/2016	30	320	25

Note: # - Hourly average value. Expressed as at 0°C, 101.325kPa, dry and corrected to 12% CO₂ condition.

* - Unit L4 was not on load.

B.2.3 Monthly Summary of Stack SO2 for Unit L2

Date	Daily Maximum	
	SO2 concentration (mg/Nm3) #	Opacity (%)
1/7/2016	58	12
2/7/2016	55	14
3/7/2016	64	11
4/7/2016	43	11
5/7/2016	39	12
6/7/2016	62	12
7/7/2016	44	14
8/7/2016	62	14
9/7/2016	73	14
10/7/2016	74	13
11/7/2016	87	14
12/7/2016	48	15
13/7/2016	63	13
14/7/2016	52	13
15/7/2016	60	14
16/7/2016	53	14
17/7/2016	63	14
18/7/2016	53	22
19/7/2016	*	18
20/7/2016	60	19
21/7/2016	64	17
22/7/2016	67	14
23/7/2016	109	15
24/7/2016	160	11
25/7/2016	158	11
26/7/2016	164	12
27/7/2016	122	11
28/7/2016	120	11
29/7/2016	81	13
30/7/2016	66	19
31/7/2016	*	*

Date	Daily Maximum	
	SO2 concentration (mg/Nm3) [#]	Opacity (%)
1/8/2016	59	14
2/8/2016	67	14
3/8/2016	55	16
4/8/2016	56	20
5/8/2016	55	23
6/8/2016	63	15
7/8/2016	*	*
8/8/2016	75	16
9/8/2016	65	11
10/8/2016	126	11
11/8/2016	66	12
12/8/2016	*	*
13/8/2016	*	*
14/8/2016	*	*
15/8/2016	*	*
16/8/2016	*	*
17/8/2016	*	*
18/8/2016	*	*
19/8/2016	*	*
20/8/2016	*	*
21/8/2016	*	*
22/8/2016	55	12
23/8/2016	52	12
24/8/2016	104	12
25/8/2016	150	13
26/8/2016	161	13
27/8/2016	*	*
28/8/2016	*	*
29/8/2016	*	*
30/8/2016	*	*
31/8/2016	*	*

Date	Daily Maximum	
	SO2 concentration (mg/Nm3) [#]	Opacity (%)
1/9/2016	110	11
2/9/2016	137	11
3/9/2016	85	13
4/9/2016	60	15
5/9/2016	82	19
6/9/2016	93	15
7/9/2016	115	12
8/9/2016	*	*
9/9/2016	*	*
10/9/2016	*	*
11/9/2016	*	*
12/9/2016	126	11
13/9/2016	65	13
14/9/2016	70	13
15/9/2016	102	12
16/9/2016	*	*
17/9/2016	*	*
18/9/2016	*	*
19/9/2016	120	11
20/9/2016	*	*
21/9/2016	*	*
22/9/2016	*	*
23/9/2016	*	*
24/9/2016	83	10
25/9/2016	*	*
26/9/2016	83	11
27/9/2016	79	11
28/9/2016	103	11
29/9/2016	*	*
30/9/2016	*	*

Note: # - Hourly average value. Expressed as at 0°C, 101.325kPa, dry and corrected to 12% CO₂ condition.

* - Unit L2 was not on load.

B.2.4 Summary of Annual Stack Particulate Sampling

Unit	Date	Results (mg/Nm ³)
L2	06/09/2016	11

Monitoring Equipment: APEX model XC-522-V (Manual stack sampling system)

B.3 Ambient SO₂ and NO₂ monitoring Data at Southern District and Cheung Chau

THE HONGKONG ELECTRIC COMPANY, LTD.
AIR QUALITY DATA MONTHLY TIME SERIES REPORT
MONTH: JULY

STATION : VICTORIA PEAK
POLLUTANT : SULPHUR DIOXIDE

YEAR : 2016
UNIT : MICROGRAMS/CUBIC METER

DAY	1	2	3	4	5	6	7	8	9	10	11	12	13	14	15	16	17	18	19	20	21	22	23	24	MEAN
1	3	8	3	2	4	2	1	3	2	3	6	1	1	2	1	2	2	1	3	5	3	3	4	5	3
2	5	3	3	2	6	3	3	2	5	3	4	1	1	2	4	8	2	6	7	6	4	2	4	3	4
3	3	3	3	4	7	4	4	5	4	4	2	3	5	1	4	5	3	5	4	7	5	2	4	4	4
4	5	1	4	4	2	7	3	4	6	6	5	5	8	3	3	6	7	5	3	4	5	13	4	3	5
5	3	5	4	4	4	3	0	1	1	1	1	1	0	0	1	0	0	0	0	0	1	0	0	0	1
6	0	1	1	0	0	0	0	1	0	0	0	0	0	0	1	3	3	2	3	4	4	5	2	3	1
7	2	2	2	2	2	2	2	2	3	2	2	1	1	2	2	2	5	12	13	17	10	12	7	5	5
8	5	3	2	5	6	7	6	11	15	21	31	28	32	28	15	12	16	14	11	17	6	5	11	12	13
9	12	13	20	15	17	25	27	32	31	38	36	31	35	28	24	17	14	7	5	4	2	4	2	1	18
10	2	1	1	1	0	0	0	0	1	1	0	1	1	1	3	9	5	2	2	1	1	1	2	5	2
11	5	1	1	2	1	1	0	1	1	0	0	1	2	3	4	5	6	4	3	3	5	9	3	5	3
12	3	2	2	0	8	2	2	1	1	1	1	2	6	7	7	5	8	6	3	1	1	7	5	4	4
13	6	6	4	5	4	2	2	1	1	2	2	2	6	4	5	5	8	3	1	3	8	2	2	1	4
14	1	0	2	3	3	4	1	0	3	7	5	2	2	2	2	2	1	1	5	2	1	2	3	4	2
15	2	1	1	1	1	1	1	1	1	2	2	1	4	4	4	5	3	2	1	2	2	2	0	2	2
16	1	1	2	1	1	1	3	3	3	1	1	2	1	3	3	2	3	3	1	2	2	2	1	2	2
17	1	1	1	0	0	1	2	3	0	1	6	2	2	3	3	3	3	2	2	3	4	4	13	1	3
18	2	3	2	1	1	2	3	5	2	9	5	28	25	18	2	2	1	2	2	3	5	3	6	5	6
19	1	6	7	6	3	2	2	3	1	2	1	2	1	2	1	3	1	0	2	4	3	3	5	4	3
20	2	3	1	3	1	2	1	1	2	2	1	1	1	2	4	2	3	5	6	4	4	7	1	3	3
21	3	3	3	3	4	3	1	1	2	3	6	5	5	6	3	4	7	3	3	3	4	3	2	3	3
22	2	2	1	2	3	2	3	3	2	1	2	2	2	2	2	3	8	7	5	4	4	3	2	1	3
23	2	3	2	1	2	4	2	3	4	3	8	7	7	5	9	3	3	4	5	5	5	4	9	11	5
24	6	4	2	3	1	1	3	4	3	3	3	4	7	4	6	12	12	6	8	3	3	3	2	6	5
25	4	3	2	3	2	1	1	2	2	3	6	7	10	9	8	12	14	12	9	10	5	3	4	3	6
26	1	2	2	1	1	2	1	1	1	1	1	1	1	1	1	0	0	0	1	0	0	0	1	1	1
27	1	1	4	6	6	5	7	9	4	3	4	3	2	6	2	3	4	4	4	3	3	2	3	4	4
28	2	2	4	4	4	3	2	2	3	8	12	4	3	7	12	8	13	11	2	3	2	3	7	2	5
29	2	2	2	1	1	4	8	5	3	4	7	7	7	6	6	6	5	4	5	1	2	2	2	4	4
30	5	6	6	5	5	7	9	10	12	12	11	13	19	23	6	3	3	2	1	2	12	7	4	5	8
31	6	5	6	7	9	5	5	14	8	5	4	2	3	3	3	3	2	4	5	7	10	8	4	8	6

MONTHLY STATISTICS:

GEOM	ARITH-----PERCENTILES-----										RANGE-----		STN GEOM	PERCENT	NO. OF TIMES	
MEAN	MEDIAN	MEAN	50	90	95	98	99	1-HR	24-HR	DEVIATION	VALID DATA	ABOVE	LIMIT	LEVEL		
3	3	4	3	8	13	24	30	0	-	38	1	-	18	2	100	0

NOTES: 1. FLAGS FOR INVALID DATA :
D: DYNAMIC CALIBRATION
T: TELEMETRY/DATALOGGR FAULT
M: MAINTENANCE OR ANALYZER FAULT
P: POWER FAILURE

THE HONGKONG ELECTRIC COMPANY, LTD.
AIR QUALITY DATA MONTHLY TIME SERIES REPORT
MONTH: JULY

STATION : VICTORIA PEAK
POLLUTANT : NITROGEN DIOXIDE

YEAR : 2016
UNIT : MICROGRAMS/CUBIC METER

DAY	1	2	3	4	5	6	7	8	9	10	11	12	13	14	15	16	17	18	19	20	21	22	23	24	MEAN
1	8	18	7	3	9	4	3	8	7	8	11	2	2	3	3	4	9	6	8	17	11	11	10	9	8
2	9	4	5	2	13	3	8	6	11	8	14	3	1	4	8	14	9	22	22	23	16	11	15	8	10
3	4	4	5	5	13	5	6	11	8	8	7	7	13	11	12	10	11	15	14	24	12	7	10	11	10
4	11	2	7	7	1	10	3	7	10	9	6	5	10	7	2	6	9	14	18	10	9	24	10	5	8
5	5	10	6	4	6	5	1	2	3	6	7	8	1	3	4	3	3	2	0	0	2	0	0	0	3
6	0	0	0	0	0	0	0	8	5	7	10	9	1	25	29	8	17	4	5	6	14	22	2	9	8
7	7	2	1	1	2	3	6	9	8	9	10	5	4	12	17	23	24	33	34	42	40	33	38	8	15
8	6	1	0	8	8	11	12	13	24	34	47	41	45	49	25	27	36	24	24	52	21	22	45	38	26
9	35	27	31	26	25	30	33	33	36	44	42	38	50	45	42	28	24	22	23	12	11	38	31	14	31
10	16	9	9	11	1	2	6	5	11	11	11	14	7	8	8	15	18	12	12	15	13	18	14	27	11
11	19	2	0	8	1	1	0	11	6	1	2	2	12	8	18	20	27	13	19	23	30	38	10	31	13
12	8	8	16	1	39	3	10	12	6	6	4	7	15	17	16	20	44	26	17	8	11	31	21	14	15
13	17	10	6	9	6	1	3	5	7	12	8	8	22	16	17	12	26	23	16	23	25	12	7	4	12
14	3	M	3	5	3	6	5	4	9	29	20	12	12	6	7	11	7	13	19	10	9	8	8	12	10
15	5	2	0	1	1	2	6	11	11	8	5	4	12	21	13	15	11	8	5	24	18	12	11	8	9
16	8	5	5	8	2	5	16	12	13	4	3	3	1	6	7	9	13	13	9	11	16	15	5	8	8
17	1	1	5	1	0	0	1	9	1	2	10	5	4	8	10	7	5	6	10	13	15	13	14	2	6
18	2	4	3	0	0	1	5	10	2	8	4	13	13	9	2	1	4	3	4	8	11	8	16	10	6
19	1	8	9	9	4	3	2	7	1	3	1	2	0	1	1	3	7	3	8	10	10	10	14	6	5
20	1	6	0	2	0	3	0	1	2	0	1	0	1	3	7	4	6	18	14	11	17	16	2	8	5
21	8	6	3	2	3	2	5	6	2	8	7	9	5	12	7	13	18	8	7	11	9	18	8	8	8
22	1	1	3	4	1	12	9	5	2	3	3	3	2	2	1	5	21	18	14	25	22	15	18	10	8
23	3	5	1	1	2	5	2	2	3	4	11	8	4	10	11	3	2	8	10	15	21	31	46	39	10
24	27	10	0	4	0	1	4	3	4	6	6	12	13	9	11	14	29	20	14	15	20	18	16	20	12
25	5	1	0	2	0	0	1	2	7	7	8	13	20	18	15	17	15	17	21	31	13	5	2	2	9
26	0	0	0	1	0	1	0	2	4	5	2	6	6	2	6	0	0	2	3	3	0	0	8	6	2
27	4	2	4	11	10	8	8	12	6	6	9	5	5	8	5	7	7	9	14	10	13	17	23	9	9
28	4	3	13	4	2	4	7	4	5	11	17	3	2	7	17	14	24	20	9	11	5	12	16	5	9
29	10	7	7	0	0	4	8	4	4	10	13	21	23	15	8	5	11	10	11	9	13	7	7	12	9
30	12	12	23	22	17	10	15	11	17	23	24	27	36	47	34	48	77	82	91	90	145	132	45	28	45
31	12	9	8	18	33	11	10	32	31	23	17	7	14	5	12	8	4	9	16	23	15	7	3	7	14

MONTHLY STATISTICS:

GEOM	ARITH-----PERCENTILES-----							-----RANGE-----				STN GEOM	PERCENT	NO. OF TIMES		
MEAN	MEDIAN	MEAN	50	90	95	98	99	1-HR	24-HR	DEVIATION	VALID DATA	ABOVE	LIMIT	LEVEL		
8	8	11	8	24	34	45	50	0	-	145	2	-	45	3	100	0

NOTES: 1. FLAGS FOR INVALID DATA :
D: DYNAMIC CALIBRATION
T: TELEMETRY/DATALOGGR FAULT
M: MAINTENANCE OR ANALYZER FAULT
P: POWER FAILURE

THE HONGKONG ELECTRIC COMPANY, LTD.
AIR QUALITY DATA MONTHLY TIME SERIES REPORT

STATION : CHUNG HOM KOK ZONE SUBSTATION
POLLUTANT : SULPHUR DIOXIDE

MONTH: JULY

YEAR : 2016

UNIT : MICROGRAMS/CUBIC METER

DAY	1	2	3	4	5	6	7	8	9	10	11	12	13	14	15	16	17	18	19	20	21	22	23	24	MEAN
1	0	0	0	0	0	0	0	0	0	0	0	0	0	0	0	0	0	0	0	0	0	0	0	0	0
2	0	0	0	0	0	0	1	0	1	0	1	0	0	0	0	0	0	0	0	1	1	2	2	0	0
3	0	0	0	0	1	2	3	2	0	0	0	2	0	0	1	0	0	0	0	0	1	0	0	0	1
4	1	1	0	1	0	0	0	1	0	0	0	0	0	0	0	0	T	T	T	T	T	T	T	T	
5	T	T	T	T	T	T	T	T	T	T	T	T	0	0	0	0	0	0	0	0	0	0	0	0	
6	0	0	0	0	0	0	0	0	0	0	0	0	0	0	0	0	0	0	0	1	0	1	1	0	0
7	0	0	0	0	0	0	0	0	0	0	0	0	0	0	0	0	0	0	0	4	11	14	9	8	2
8	6	3	2	1	1	1	2	3	7	6	11	12	4	1	0	0	0	0	9	1	0	0	0	1	3
9	9	9	10	24	18	13	12	18	20	25	20	20	14	4	1	5	2	0	0	0	0	0	0	0	9
10	0	1	0	0	0	0	0	1	1	1	0	4	5	10	13	8	10	8	4	5	7	7	5	2	4
11	7	1	1	1	2	1	1	2	2	1	0	9	15	18	10	2	2	0	0	5	8	2	5	4	
12	4	5	1	0	1	1	1	2	3	1	1	6	7	5	5	8	7	5	1	4	3	2	4	3	
13	6	6	6	4	3	1	1	0	3	3	4	2	0	0	0	0	0	0	0	0	0	0	5	3	2
14	3	8	6	5	4	5	0	0	0	1	1	4	1	4	4	1	2	6	6	2	6	9	16	12	4
15	7	10	8	9	14	10	15	9	4	12	5	2	1	0	0	0	2	1	0	1	0	1	1	2	5
16	1	1	0	0	0	2	2	3	6	2	4	3	2	1	1	2	1	1	1	0	1	1	1	1	2
17	1	1	1	0	0	0	0	0	0	0	1	0	0	0	0	0	1	0	0	1	0	1	1	1	0
18	1	0	0	1	1	0	1	3	1	1	2	0	0	0	0	0	1	0	1	1	4	1	1	0	1
19	0	0	0	1	2	2	4	5	8	6	2	3	1	1	0	3	1	0	0	1	1	5	4	4	2
20	1	2	0	1	2	4	3	3	11	6	3	3	4	3	3	2	5	1	3	2	2	7	5	1	3
21	3	1	1	2	2	5	2	1	3	5	4	5	5	2	0	1	0	0	0	0	1	1	3	4	2
22	7	7	5	7	5	2	2	13	7	13	17	7	0	1	0	0	0	2	1	1	0	3	3	7	5
23	8	12	8	8	12	10	17	11	12	8	21	16	8	6	12	2	1	2	8	5	3	3	2	3	8
24	4	5	8	9	6	2	3	7	22	16	27	27	15	11	16	10	7	5	4	0	1	7	3	10	9
25	6	5	5	5	6	2	1	0	0	4	27	13	5	11	10	8	11	5	5	2	1	1	1	2	6
26	1	0	1	1	1	0	1	0	0	0	M	M	0	0	0	0	0	0	0	0	0	0	0	1	0
27	2	0	1	1	3	4	4	3	2	5	6	2	6	3	0	0	0	0	1	1	2	1	4	7	2
28	9	5	2	6	3	1	1	1	11	23	18	4	2	0	0	0	0	0	0	1	2	5	8	3	4
29	3	3	5	4	2	4	15	7	8	9	18	7	4	4	1	1	1	1	4	3	6	6	5	3	5
30	4	3	4	6	9	7	8	6	7	29	24	24	28	43	9	3	1	0	3	11	22	2	2	4	11
31	3	3	2	9	2	2	2	4	2	3	1	1	1	1	1	0	2	4	5	4	8	6	3	5	3

MONTHLY STATISTICS:

GEOM	ARITH-----PERCENTILES-----										RANGE-----		STN GEOM	PERCENT	NO. OF TIMES	
MEAN	MEDIAN	MEAN	50	90	95	98	99	1-HR		24-HR		DEVIATION	VALID DATA	ABOVE	LIMIT	LEVEL
3	1	3	1	9	13	20	24	0	-	43	0	-	11	3	97	0

- NOTES: 1. FLAGS FOR INVALID DATA :
- D: DYNAMIC CALIBRATION
 - T: TELEMETRY/DATALOGGR FAULT
 - M: MAINTENANCE OR ANALYZER FAULT
 - P: POWER FAILURE

THE HONGKONG ELECTRIC COMPANY, LTD.
AIR QUALITY DATA MONTHLY TIME SERIES REPORT

STATION : CHUNG HOM KOK ZONE SUBSTATION
POLLUTANT : NITROGEN DIOXIDE

MONTH: JULY

YEAR : 2016

UNIT : MICROGRAMS/CUBIC METER

DAY	1	2	3	4	5	6	7	8	9	10	11	12	13	14	15	16	17	18	19	20	21	22	23	24	MEAN
1	7	6	1	6	0	4	6	3	12	4	7	4	1	3	2	2	4	4	9	10	10	6	3	15	5
2	9	4	7	1	2	3	12	8	8	4	5	4	6	5	5	7	14	10	7	12	14	24	16	6	8
3	7	5	5	10	7	14	17	9	4	6	2	9	9	6	12	7	9	15	13	17	12	3	4	2	9
4	11	8	5	15	2	5	8	7	6	6	1	1	3	1	3	1	T	T	T	T	T	T	T	T	T
5	T	T	T	T	T	T	T	T	T	T	T	T	3	4	4	4	5	4	5	6	9	4	2	1	
6	1	1	1	0	0	0	1	5	4	3	3	5	10	10	7	1	2	2	6	8	5	9	5	4	4
7	3	1	1	1	1	1	2	1	1	1	2	2	2	3	4	5	7	12	18	35	25	32	48	15	9
8	11	12	5	7	12	16	17	20	28	36	56	72	52	47	28	35	31	51	34	53	15	12	12	21	28
9	46	34	41	60	60	57	42	51	51	60	62	67	46	28	17	45	20	15	12	13	7	8	9	8	36
10	9	19	6	20	12	13	8	14	20	20	17	31	22	29	32	19	26	23	16	18	13	15	7	6	17
11	17	1	4	6	8	2	6	8	12	20	15	8	16	25	31	37	25	25	7	8	19	24	11	22	15
12	13	13	5	6	4	4	6	6	15	7	2	10	18	15	16	21	19	17	9	16	9	11	10	13	11
13	12	M	12	12	6	4	9	1	10	18	16	11	11	6	6	4	3	3	2	2	7	5	12	7	8
14	8	15	14	13	10	12	1	1	4	7	5	8	1	5	12	6	9	16	17	11	18	22	32	18	11
15	7	13	14	11	22	18	20	10	3	8	6	3	2	1	4	5	4	7	10	18	10	11	2	19	10
16	10	10	2	3	6	9	7	5	7	3	10	6	5	5	6	4	9	8	9	10	7	6	9	19	7
17	18	15	14	7	2	4	4	3	2	2	7	4	3	7	5	6	8	5	4	14	4	9	16	7	7
18	6	3	1	10	12	6	13	11	5	5	4	1	2	2	2	4	4	2	6	6	13	6	8	2	6
19	10	6	12	16	13	8	9	8	9	5	2	4	2	1	4	8	3	3	6	5	4	9	16	9	7
20	4	3	1	1	3	7	2	4	7	2	1	2	5	4	9	5	9	1	10	6	8	25	8	3	5
21	11	17	3	13	20	19	5	0	3	3	3	5	4	2	3	6	4	6	6	6	11	12	20	19	8
22	24	19	14	18	13	2	1	14	10	17	19	9	3	4	4	6	4	8	7	14	6	17	19	20	11
23	18	23	18	13	18	17	17	9	8	9	16	12	11	17	24	6	7	8	20	15	11	8	6	8	13
24	8	11	24	23	16	10	8	4	12	17	25	29	22	20	20	14	13	14	12	5	3	15	7	17	15
25	19	9	14	14	14	6	5	3	4	4	12	10	4	9	6	6	16	10	15	13	7	5	5	6	9
26	2	1	2	2	3	2	3	1	0	0	M	M	3	4	5	5	6	9	5	3	4	6	4	4	3
27	9	M	5	4	7	10	8	5	4	4	5	3	6	4	4	5	5	10	13	11	14	10	17	29	8
28	30	11	5	16	12	10	6	4	10	19	17	7	9	10	7	7	12	11	8	7	8	18	26	19	12
29	18	19	24	17	6	10	13	9	16	20	27	21	17	20	13	9	14	6	20	12	16	14	14	23	16
30	23	25	28	33	37	36	33	28	27	46	54	58	66	84	59	34	14	10	50	81	117	43	29	7	43
31	6	5	2	30	2	3	2	14	8	12	5	4	3	2	1	3	7	8	9	9	11	5	1	6	7

MONTHLY STATISTICS:

GEOM	ARITH-----PERCENTILES-----							-----RANGE-----					STN GEOM	PERCENT	NO. OF TIMES	
MEAN	MEDIAN	MEAN	50	90	95	98	99	1-HR		24-HR			DEVIATION	VALID DATA	ABOVE LIMIT LEVEL	
8	8	12	8	24	34	54	60	0	-	117	3	-	43	3	97	0

- NOTES: 1. FLAGS FOR INVALID DATA :
- D: DYNAMIC CALIBRATION
 - T: TELEMETRY/DATALOGGR FAULT
 - M: MAINTENANCE OR ANALYZER FAULT
 - P: POWER FAILURE

THE HONGKONG ELECTRIC COMPANY, LTD.
AIR QUALITY DATA MONTHLY TIME SERIES REPORT
MONTH: JULY

STATION : VICTORIA ROAD SUBSTATION
POLLUTANT : SULPHUR DIOXIDE

YEAR : 2016
UNIT : MICROGRAMS/CUBIC METER

DAY	1	2	3	4	5	6	7	8	9	10	11	12	13	14	15	16	17	18	19	20	21	22	23	24	MEAN
1	4	6	4	3	4	3	3	5	3	4	4	3	2	3	2	2	2	2	3	6	4	3	4	2	3
2	2	2	3	2	4	4	3	2	4	1	3	1	1	2	3	3	2	4	3	5	3	3	4	5	3
3	3	3	5	6	10	5	4	5	5	4	3	3	2	1	3	3	2	2	4	3	2	2	2	4	4
4	4	2	3	3	2	4	2	2	4	3	3	3	5	2	2	3	3	3	2	4	7	4	4	4	3
5	3	8	6	4	3	3	2	2	2	1	1	1	1	1	1	1	0	1	1	1	1	1	1	1	2
6	0	1	1	1	0	0	0	0	0	0	1	1	3	4	5	8	3	2	2	2	2	2	2	1	2
7	1	1	1	1	1	1	0	1	1	1	0	0	0	1	1	7	5	6	9	8	9	7	4	4	3
8	3	2	2	3	3	4	3	3	4	7	10	10	8	6	4	5	3	4	3	7	1	1	1	1	4
9	2	3	4	4	4	5	7	7	8	8	7	7	6	5	3	3	3	2	1	2	1	1	1	1	4
10	1	1	1	1	1	1	1	0	1	1	1	2	2	2	4	4	4	2	2	1	1	2	2	2	2
11	2	1	1	1	0	1	0	0	1	1	1	1	2	2	3	11	5	3	3	1	2	4	1	3	2
12	5	3	1	1	1	2	2	2	6	4	2	2	4	4	5	4	5	5	3	2	3	2	2	4	3
13	5	5	3	3	3	2	2	1	1	1	2	2	2	3	6	5	2	2	1	2	2	1	1	2	2
14	1	1	2	2	2	2	2	1	2	2	4	3	2	2	3	3	2	2	4	3	4	5	4	5	3
15	4	4	5	3	3	4	5	4	3	3	3	2	3	2	3	2	3	2	2	2	3	2	2	2	3
16	2	1	1	1	1	2	2	2	2	2	2	2	3	2	2	1	3	1	1	2	2	2	1	3	2
17	2	2	4	1	1	1	2	3	1	2	4	2	2	3	4	3	3	3	2	5	2	4	4	2	3
18	2	3	3	2	2	2	2	5	2	3	2	7	10	9	1	2	1	2	2	3	3	3	4	4	3
19	2	4	6	5	3	3	3	3	2	2	1	2	1	2	1	2	2	1	1	3	2	3	4	3	3
20	1	2	1	2	2	3	2	3	4	3	1	2	1	2	5	2	2	3	5	2	4	3	2	3	3
21	4	4	4	5	4	4	2	2	3	6	6	4	4	3	3	3	2	2	3	3	3	5	5	4	4
22	7	8	3	4	3	3	4	3	2	3	3	2	3	3	2	3	2	3	4	3	2	3	3	3	3
23	2	2	2	2	2	3	2	2	3	3	8	5	5	4	5	2	2	4	7	4	3	2	3	4	3
24	3	3	2	3	1	1	2	3	2	1	3	7	4	2	4	6	1	1	6	1	1	2	1	4	3
25	3	2	2	2	1	1	1	1	2	3	2	1	7	3	6	5	13	5	5	4	2	2	2	1	3
26	1	1	1	1	0	0	0	0	0	0	0	0	0	0	0	M	M	0	0	0	0	0	0	1	0
27	1	1	3	3	3	4	4	4	3	1	3	2	3	4	3	2	3	3	3	2	1	1	7	2	3
28	1	2	2	2	2	1	1	1	2	2	3	1	3	3	4	2	3	2	1	1	1	1	3	1	2
29	1	1	1	2	2	3	4	4	2	2	4	3	3	2	2	2	1	3	3	2	2	2	2	3	2
30	3	2	2	2	2	2	2	4	5	4	6	8	7	5	2	2	3	9	8	5	3	6	6	8	4
31	13	16	9	7	7	6	5	8	18	15	8	3	3	1	1	1	1	2	2	2	2	3	2	3	6

MONTHLY STATISTICS:

GEOM	ARITH-----PERCENTILES-----							-----RANGE-----				STN GEOM	PERCENT	NO. OF TIMES		
MEAN	MEDIAN	MEAN	50	90	95	98	99	1-HR	24-HR	DEVIATION	VALID DATA	ABOVE	LIMIT	LEVEL		
2	2	3	2	5	7	8	10	0	-	18	0	-	6	2	100	0

- NOTES: 1. FLAGS FOR INVALID DATA :
- D: DYNAMIC CALIBRATION
 - T: TELEMETRY/DATALOGGR FAULT
 - M: MAINTENANCE OR ANALYZER FAULT
 - P: POWER FAILURE

THE HONGKONG ELECTRIC COMPANY, LTD.
AIR QUALITY DATA MONTHLY TIME SERIES REPORT
MONTH: JULY

STATION : VICTORIA ROAD SUBSTATION
POLLUTANT : NITROGEN DIOXIDE

YEAR : 2016
UNIT : MICROGRAMS/CUBIC METER

DAY	1	2	3	4	5	6	7	8	9	10	11	12	13	14	15	16	17	18	19	20	21	22	23	24	MEAN
1	21	24	13	13	18	13	18	21	17	19	19	16	14	15	15	15	16	16	17	26	19	20	18	18	18
2	16	17	14	14	22	17	19	19	21	22	23	16	14	16	18	19	23	27	24	28	20	24	28	21	20
3	15	16	16	23	28	16	20	24	19	17	18	18	14	14	22	21	18	21	21	29	21	17	18	21	19
4	17	12	15	15	9	18	15	16	18	17	16	15	20	15	12	13	15	19	23	16	22	27	19	16	17
5	16	26	21	14	17	12	12	16	19	19	20	22	19	16	20	19	16	17	16	11	13	12	10	10	16
6	9	8	8	7	6	7	10	13	20	21	23	30	38	40	45	44	32	23	22	18	20	24	15	14	21
7	13	11	10	10	10	10	14	16	15	17	18	18	17	16	17	35	26	28	33	42	37	34	30	21	21
8	21	15	13	18	21	25	28	28	30	35	48	57	60	53	42	48	42	50	57	54	24	24	23	37	36
9	52	45	39	50	32	33	40	36	36	43	44	52	58	45	41	38	34	29	23	26	22	21	25	22	37
10	22	20	18	19	13	16	20	26	30	26	28	29	23	20	27	28	26	18	19	17	20	23	28	23	22
11	23	12	12	10	8	13	13	16	23	20	21	24	26	27	33	44	35	26	30	20	19	33	15	22	22
12	33	20	13	15	19	19	22	25	27	24	16	17	27	24	24	26	33	29	23	19	23	21	23	28	23
13	29	M	19	20	16	14	20	22	24	23	23	27	26	25	30	30	27	32	27	30	25	25	23	24	24
14	19	15	15	17	16	19	17	20	20	23	30	28	28	25	22	24	24	27	30	30	29	31	25	29	23
15	26	22	23	16	18	23	28	24	20	20	21	16	20	20	22	20	19	15	17	20	21	18	17	16	20
16	17	16	16	14	13	14	18	18	19	18	15	16	14	14	16	16	20	16	16	18	16	16	15	17	16
17	17	16	19	13	15	13	17	18	16	15	17	14	15	14	17	19	18	18	15	25	20	21	21	19	17
18	17	16	15	12	11	11	14	21	16	19	16	16	18	17	15	17	16	16	17	19	19	20	23	19	17
19	16	19	19	19	15	16	20	23	18	16	15	15	14	15	15	18	18	15	17	20	18	20	21	16	17
20	15	17	11	12	11	16	17	17	20	18	15	15	14	17	21	20	22	24	25	22	24	25	19	19	18
21	25	24	20	18	16	20	18	22	16	20	22	21	16	16	15	16	17	18	17	18	21	26	23	19	19
22	22	21	14	16	13	18	23	18	17	17	17	15	14	16	16	18	16	16	16	16	17	20	20	16	17
23	16	17	14	13	13	16	15	14	15	17	23	23	19	19	26	20	16	18	22	20	19	19	27	28	19
24	26	19	15	15	12	14	16	16	16	17	20	26	23	21	24	25	19	19	21	15	20	16	15	21	19
25	16	13	11	14	10	9	13	16	15	17	16	15	24	18	20	20	31	27	32	28	21	18	15	13	18
26	11	9	9	8	9	9	16	17	15	17	16	16	14	16	15	M	M	18	16	12	9	9	12	10	13
27	11	M	17	21	18	23	20	20	11	11	11	9	9	12	11	11	11	15	19	13	11	11	25	14	15
28	10	13	12	9	7	5	13	15	11	10	12	9	9	12	13	8	14	10	12	12	12	17	21	15	12
29	18	13	14	10	8	11	13	11	10	11	16	17	20	19	16	14	13	17	21	15	14	13	12	20	14
30	21	17	24	27	21	22	23	24	21	22	31	40	51	41	37	58	86	90	91	99	80	108	104	94	51
31	88	90	82	64	67	63	61	60	52	44	38	29	28	15	15	14	14	19	25	26	23	14	12	16	40

MONTHLY STATISTICS:

GEOM	ARITH-----PERCENTILES-----										RANGE-----		STN GEOM	PERCENT	NO. OF TIMES	
MEAN	MEDIAN	MEAN	50	90	95	98	99	1-HR		24-HR		DEVIATION	VALID DATA	ABOVE	LIMIT	LEVEL
19	18	21	18	30	44	60	87	5	-	108	12	-	51	2	99	0

- NOTES: 1. FLAGS FOR INVALID DATA :
- D: DYNAMIC CALIBRATION
 - T: TELEMETRY/DATALOGGR FAULT
 - M: MAINTENANCE OR ANALYZER FAULT
 - P: POWER FAILURE

THE HONGKONG ELECTRIC COMPANY, LTD.
AIR QUALITY DATA MONTHLY TIME SERIES REPORT
MONTH: JULY

STATION : POK FU LAM
POLLUTANT : SULPHUR DIOXIDE

YEAR : 2016
UNIT : MICROGRAMS/CUBIC METER

DAY	1	2	3	4	5	6	7	8	9	10	11	12	13	14	15	16	17	18	19	20	21	22	23	24	MEAN
1	6	12	6	5	9	5	6	7	6	6	9	19	6	7	5	6	5	3	6	9	6	4	6	5	7
2	7	4	7	2	6	9	5	4	9	3	9	3	7	7	6	7	4	10	5	9	4	4	8	8	6
3	4	6	11	16	20	9	7	8	11	7	6	8	6	2	11	8	6	5	8	8	3	3	6	8	8
4	9	3	5	7	4	8	3	3	9	8	5	7	11	5	3	5	5	5	2	4	8	17	6	5	6
5	5	13	9	6	8	6	3	2	2	1	2	4	2	1	2	1	1	1	1	1	2	2	1	1	3
6	0	1	2	1	1	1	1	2	1	0	0	1	3	2	3	5	4	3	3	4	5	6	4	3	2
7	3	2	2	2	3	2	2	3	3	3	2	2	2	4	2	16	14	20	22	26	17	14	13	9	8
8	9	5	4	17	10	14	8	8	20	31	49	51	48	34	22	22	16	14	11	27	7	6	4	9	19
9	13	12	13	16	14	18	27	26	33	43	47	37	36	30	25	22	16	9	6	8	5	6	4	1	19
10	2	1	1	0	0	1	0	1	2	2	1	2	2	4	6	12	13	3	4	2	2	4	5	6	3
11	7	5	6	6	3	6	2	3	3	1	1	2	5	7	12	40	13	8	9	5	6	10	5	5	7
12	11	8	3	2	5	3	4	4	10	9	4	8	12	13	16	M	4	3	2	0	2	0	0	10	6
13	8	9	7	7	7	4	5	2	1	3	2	4	3	11	22	13	9	4	2	4	5	2	3	3	6
14	0	0	1	4	4	8	4	1	2	2	7	7	5	5	4	9	3	3	7	6	6	9	8	11	5
15	10	9	8	6	6	11	10	6	5	8	10	6	7	5	4	4	11	6	5	8	5	6	8	5	7
16	5	7	7	2	4	5	6	6	6	6	4	12	8	4	7	5	7	4	1	4	4	5	4	9	6
17	6	6	8	4	6	5	10	11	5	6	8	5	9	8	9	9	8	6	6	8	4	7	8	4	7
18	4	6	6	3	3	2	6	12	8	6	5	4	5	10	6	8	8	1	3	6	6	9	12	8	6
19	4	9	10	7	8	7	5	3	4	5	3	11	3	8	5	13	9	1	2	6	5	8	10	6	6
20	1	2	2	3	3	6	4	4	6	6	7	4	7	5	11	6	4	7	11	5	9	10	5	7	6
21	10	8	10	11	8	8	4	3	4	8	13	12	8	6	6	5	5	4	5	3	4	10	9	4	7
22	13	11	5	5	4	4	11	9	3	7	8	8	7	7	3	7	9	9	11	4	5	4	4	4	7
23	5	7	4	4	4	4	4	6	9	5	21	25	18	15	14	6	6	13	13	10	9	5	8	8	9
24	7	7	6	7	3	3	6	15	9	5	9	39	14	5	12	19	6	5	17	6	6	8	6	10	10
25	9	6	5	7	6	5	4	6	6	6	9	6	12	5	9	12	42	18	13	13	9	7	6	3	9
26	2	2	2	2	1	2	2	2	1	0	0	0	0	1	1	1	1	2	2	2	2	3	3	2	1
27	3	4	10	11	10	11	12	13	8	4	9	4	7	18	6	5	10	6	12	9	6	7	17	18	9
28	8	9	10	12	11	9	7	8	11	6	11	13	14	9	10	8	10	10	8	13	11	12	20	10	10
29	10	11	12	12	13	25	22	19	14	14	21	16	17	17	15	17	14	16	15	12	13	14	13	16	15
30	16	16	20	19	18	17	19	27	32	29	39	46	48	32	15	13	16	32	23	23	24	23	20	31	25
31	54	58	40	41	43	35	28	24	54	79	65	33	35	17	21	20	16	19	24	21	23	25	22	27	34

MONTHLY STATISTICS:

GEOM	ARITH-----PERCENTILES-----										RANGE-----		STN GEOM	PERCENT	NO. OF TIMES	
MEAN	MEDIAN	MEAN	50	90	95	98	99	1-HR		24-HR		DEVIATION	VALID DATA	ABOVE	LIMIT	LEVEL
7	6	9	6	19	27	40	48	0	-	79	1	-	34	2	100	0

NOTES: 1. FLAGS FOR INVALID DATA :
D: DYNAMIC CALIBRATION
T: TELEMETRY/DATALOGGR FAULT
M: MAINTENANCE OR ANALYZER FAULT
P: POWER FAILURE

THE HONGKONG ELECTRIC COMPANY, LTD.
AIR QUALITY DATA MONTHLY TIME SERIES REPORT
MONTH: JULY

STATION : POK FU LAM
POLLUTANT : NITROGEN DIOXIDE

YEAR : 2016
UNIT : MICROGRAMS/CUBIC METER

DAY	1	2	3	4	5	6	7	8	9	10	11	12	13	14	15	16	17	18	19	20	21	22	23	24	MEAN
1	19	29	14	11	20	14	19	24	18	16	20	21	10	11	9	12	11	13	19	28	24	21	20	22	18
2	23	17	18	11	23	24	25	14	23	19	20	12	17	16	17	17	21	30	26	38	25	20	28	29	21
3	16	M	28	39	41	19	17	25	22	21	18	18	15	9	22	20	15	21	22	35	26	19	20	28	22
4	24	14	17	19	11	22	16	21	27	20	16	16	22	15	13	12	16	25	26	29	28	38	24	16	20
5	14	32	20	11	19	13	7	9	13	14	12	15	11	10	11	9	11	12	9	7	11	8	6	8	12
6	5	6	6	4	3	4	6	18	20	30	21	36	58	55	54	38	29	23	21	21	24	27	14	21	23
7	15	12	10	7	7	7	10	17	21	21	18	14	15	17	17	34	30	37	51	64	51	44	50	21	25
8	21	14	15	62	42	38	32	36	48	55	88	76	82	61	44	47	42	52	67	86	24	24	27	46	47
9	59	61	60	66	45	46	56	48	59	59	M	79	80	51	40	37	21	17	13	16	11	16	26	15	43
10	21	14	8	4	5	16	16	33	34	29	35	23	18	20	10	15	17	7	7	7	7	16	23	23	17
11	17	6	9	6	5	13	6	10	20	22	8	7	16	13	36	61	29	14	24	27	19	32	14	19	18
12	36	23	2	4	24	7	10	27	26	23	11	M	M	M	M	M	37	34	32	22	26	22	22	26	22
13	24	17	13	16	13	7	13	21	19	30	9	25	20	32	31	37	37	34	31	35	29	12	10	13	22
14	7	2	5	10	9	24	20	17	18	13	34	34	29	20	18	28	19	20	28	27	28	30	24	31	21
15	27	19	22	14	17	29	29	22	15	29	25	15	14	9	7	9	18	13	21	19	16	16	19	13	18
16	15	21	19	9	12	13	15	15	16	15	13	15	10	6	10	7	14	13	12	15	16	13	16	18	14
17	15	M	17	10	19	11	19	23	14	11	10	6	10	8	8	13	10	12	11	22	15	16	18	11	13
18	15	15	17	9	10	9	15	25	17	17	M	M	M	M	M	M	M	M	M	M	M	M	M	M	M
19	M	M	M	M	M	M	M	M	M	M	M	M	M	M	M	M	M	9	16	21	16	21	24	12	
20	8	12	8	11	8	14	10	12	15	11	10	10	10	10	12	6	7	14	23	17	25	29	16	15	13
21	28	19	20	15	12	14	11	13	15	17	12	10	9	7	8	8	10	6	13	15	18	25	18	13	14
22	21	21	10	13	6	6	28	20	9	11	10	12	9	10	6	11	13	12	19	14	20	16	14	14	14
23	12	19	12	8	7	7	8	6	8	8	20	24	12	23	18	11	6	17	20	17	15	10	22	18	14
24	15	12	8	12	8	8	15	19	13	12	15	37	17	10	15	14	7	5	22	16	16	13	7	17	14
25	9	5	4	12	6	4	3	6	9	8	9	6	13	11	15	10	35	31	30	26	13	7	6	4	12
26	1	1	3	3	2	3	5	9	9	8	7	5	10	3	6	5	4	7	8	6	3	3	3	3	5
27	6	6	16	20	15	16	14	23	16	7	8	4	6	14	7	6	6	4	14	13	10	16	30	26	13
28	8	8	12	12	9	6	8	13	12	7	6	6	9	6	9	6	8	7	16	18	14	23	23	14	11
29	19	14	16	9	8	17	17	15	15	16	24	26	16	19	19	16	9	15	15	12	12	11	8	23	15
30	20	19	41	38	33	31	30	34	36	36	47	56	91	60	57	41	71	114	149	139	104	125	145	143	69
31	133	M	104	123	120	102	79	48	85	80	85	57	46	17	21	17	14	22	27	33	39	14	13	12	56

MONTHLY STATISTICS:

GEOM	ARITH-----PERCENTILES-----										RANGE-----		STN GEOM	PERCENT	NO. OF TIMES	
MEAN	MEDIAN	MEAN	50	90	95	98	99	1-HR	24-HR	DEVIATION	VALID DATA	ABOVE	LIMIT	LEVEL		
16	16	21	16	38	59	86	120	1	-	149	5	-	69	2	95	0

- NOTES: 1. FLAGS FOR INVALID DATA :
- D: DYNAMIC CALIBRATION
 - T: TELEMETRY/DATALOGGR FAULT
 - M: MAINTENANCE OR ANALYZER FAULT
 - P: POWER FAILURE

THE HONGKONG ELECTRIC COMPANY, LTD.
AIR QUALITY DATA MONTHLY TIME SERIES REPORT
MONTH: JULY

STATION : AP LEI CHAU
POLLUTANT : SULPHUR DIOXIDE

YEAR : 2016
UNIT : MICROGRAMS/CUBIC METER

DAY	1	2	3	4	5	6	7	8	9	10	11	12	13	14	15	16	17	18	19	20	21	22	23	24	MEAN
1																									
2																									
3																									
4																									
5																									
6																									
7																									
8																									
9																									
10																									
11																									
12																									
13																									
14																									
15																									
16																									
17																									
18																									
19																									
20																									
21																									
22																									
23																									
24																									
25																									
26																									
27																									
28																									
29																									
30																									
31																									

AMBIENT AIR MONITORING AT AP LEI CHAU TEMPORARILY SUSPENDED

THE HONGKONG ELECTRIC COMPANY, LTD.
AIR QUALITY DATA MONTHLY TIME SERIES REPORT
MONTH: JULY

STATION : AP LEI CHAU
POLLUTANT : NITROGEN DIOXIDE

YEAR : 2016
UNIT : MICROGRAMS/CUBIC METER

DAY	1	2	3	4	5	6	7	8	9	10	11	12	13	14	15	16	17	18	19	20	21	22	23	24	MEAN
1																									
2																									
3																									
4																									
5																									
6																									
7																									
8																									
9																									
10																									
11																									
12																									
13																									
14																									
15																									
16																									
17																									
18																									
19																									
20																									
21																									
22																									
23																									
24																									
25																									
26																									
27																									
28																									
29																									
30																									
31																									

AMBIENT AIR MONITORING AT AP LEI CHAU TEMPORARILY SUSPENDED

THE HONGKONG ELECTRIC COMPANY, LTD.
AIR QUALITY DATA MONTHLY TIME SERIES REPORT
MONTH: JULY

STATION : CHEUNG CHAU
POLLUTANT : SULPHUR DIOXIDE

YEAR : 2016
UNIT : MICROGRAMS/CUBIC METER

DAY	1	2	3	4	5	6	7	8	9	10	11	12	13	14	15	16	17	18	19	20	21	22	23	24	MEAN
1	0	0	0	0	0	0	0	0	0	0	0	0	0	0	0	0	0	0	0	0	0	0	0	1	0
2	0	0	0	0	0	0	0	0	0	0	0	0	0	0	0	0	0	0	0	0	0	0	0	1	0
3	0	0	0	0	0	0	0	0	0	0	0	0	0	0	0	0	0	0	0	0	0	0	0	1	0
4	0	0	0	0	0	0	0	0	0	0	0	0	0	0	0	0	0	0	0	0	0	0	0	1	0
5	0	0	0	0	0	0	0	0	0	1	0	0	0	0	0	2	0	2	1	1	0	0	0	6	1
6	5	6	0	0	0	0	0	0	0	0	0	0	0	0	0	6	9	3	0	0	1	1	2	6	2
7	4	4	3	2	1	1	2	6	3	1	2	2	0	2	2	5	7	4	1	0	0	0	0	2	2
8	0	0	0	0	2	4	2	3	4	8	14	17	7	6	4	4	4	2	1	0	0	0	0	3	4
9	2	1	1	2	1	1	4	7	6	6	7	4	3	2	1	1	2	0	0	0	0	0	0	2	2
10	0	0	0	0	0	0	0	0	0	0	0	0	0	0	0	0	0	0	0	0	0	0	0	3	0
11	1	0	0	0	0	0	0	0	0	0	3	5	2	2	4	2	2	1	0	0	0	0	0	2	1
12	0	0	0	0	0	0	0	0	0	0	1	1	M	7	2	1	0	0	0	0	0	0	0	3	1
13	0	0	0	0	0	0	0	0	0	0	0	0	0	1	3	0	0	3	1	1	2	6	11	11	2
14	7	7	7	8	7	2	0	0	0	1	0	0	0	0	0	0	0	0	0	0	0	0	0	1	2
15	0	0	0	0	0	0	0	1	1	0	0	0	0	0	0	0	0	0	0	0	0	0	0	5	0
16	0	0	0	0	0	0	0	0	0	0	0	0	0	0	0	0	0	0	0	0	0	0	0	1	0
17	0	0	0	0	0	0	0	0	0	0	0	0	0	0	0	0	0	0	0	0	0	0	0	7	0
18	0	0	0	0	0	0	0	0	0	0	0	0	0	0	0	0	0	0	0	0	0	0	0	2	0
19	0	0	0	0	0	0	0	0	0	0	0	M	M	M	4	0	0	0	0	0	0	0	0	2	0
20	0	0	0	0	0	0	0	0	0	0	0	0	1	0	0	0	0	0	0	0	0	0	0	2	0
21	0	0	0	0	0	0	0	0	0	0	0	0	0	0	0	0	1	0	0	0	0	0	0	2	0
22	0	0	0	0	2	4	1	2	1	0	0	0	1	0	1	0	0	0	0	0	0	0	0	1	1
23	0	0	0	0	0	0	0	0	2	0	0	0	2	1	0	1	0	1	0	0	0	0	0	2	0
24	0	0	0	0	0	0	1	4	7	5	1	0	1	5	11	3	0	0	1	0	0	0	0	3	2
25	0	0	0	0	0	0	0	1	3	1	0	0	1	1	0	0	2	7	6	0	2	4	4	6	2
26	4	2	2	1	1	0	2	2	6	6	0	0	0	0	0	0	1	0	0	0	1	0	0	5	1
27	4	5	0	0	0	0	1	3	7	5	1	0	0	0	0	0	0	0	0	0	0	0	0	2	1
28	0	1	1	0	0	2	7	3	1	0	0	0	1	1	0	1	0	0	0	0	0	0	0	2	1
29	0	0	0	0	1	8	2	2	0	0	0	0	2	2	2	0	0	0	0	0	0	0	0	5	1
30	2	1	0	1	0	0	3	4	3	2	1	2	1	3	4	5	13	9	8	1	2	3	4	11	3
31	10	10	5	3	12	13	7	8	7	12	15	5	1	1	0	2	1	9	7	5	4	3	5	13	7

MONTHLY STATISTICS:

GEOM	ARITH-----PERCENTILES-----							-----RANGE-----				STN GEOM	PERCENT	NO. OF TIMES		
MEAN	MEDIAN	MEAN	50	90	95	98	99	1-HR		24-HR		DEVIATION	VALID DATA	ABOVE LIMIT LEVEL		
3	0	1	0	4	7	9	12	0	-	17	0	-	7	2	99	0

- NOTES: 1. FLAGS FOR INVALID DATA :
- D: DYNAMIC CALIBRATION
 - T: TELEMETRY/DATALOGGR FAULT
 - M: MAINTENANCE OR ANALYZER FAULT
 - P: POWER FAILURE

THE HONGKONG ELECTRIC COMPANY, LTD.
AIR QUALITY DATA MONTHLY TIME SERIES REPORT
MONTH: JULY

STATION : CHEUNG CHAU
POLLUTANT : NITROGEN DIOXIDE

YEAR : 2016
UNIT : MICROGRAMS/CUBIC METER

DAY	1	2	3	4	5	6	7	8	9	10	11	12	13	14	15	16	17	18	19	20	21	22	23	24	MEAN
1	3	10	4	5	3	3	7	3	4	4	3	2	3	2	1	1	2	2	2	3	6	3	4	2	3
2	1	3	2	2	1	2	1	3	2	2	2	1	2	1	2	1	4	1	4	13	5	16	8	0	3
3	2	2	8	7	10	8	2	3	2	4	4	2	0	2	2	1	2	4	3	1	4	1	1	4	3
4	5	2	2	3	6	2	3	2	2	1	2	2	1	4	1	1	1	3	5	5	2	3	4	11	3
5	11	11	13	7	4	11	16	8	6	8	3	1	5	3	6	8	2	25	18	24	12	15	6	23	10
6	26	22	10	11	7	4	8	6	6	14	13	31	42	46	41	68	80	54	22	19	48	88	57	65	33
7	67	66	56	44	40	52	46	48	33	17	10	8	6	5	5	11	9	19	14	14	22	37	30	43	29
8	25	18	15	5	19	49	27	42	18	24	50	76	39	27	25	22	27	29	39	19	26	72	56	106	36
9	121	70	51	75	65	48	69	63	40	30	58	24	23	22	20	16	17	59	33	33	27	18	19	11	42
10	4	2	4	5	1	1	4	15	21	38	48	40	28	38	24	8	18	38	49	5	5	3	6	26	18
11	21	6	3	6	4	7	5	6	9	22	46	50	35	37	44	38	23	42	15	8	8	8	5	6	19
12	1	1	5	5	7	9	28	33	4	1	8	9	M	16	5	6	9	5	4	2	1	3	8	10	8
13	4	M	12	11	11	11	7	18	41	40	41	31	35	41	37	14	6	19	10	17	22	36	55	48	25
14	45	44	46	45	43	20	3	25	41	29	17	4	17	8	3	6	7	7	8	10	12	18	12	5	20
15	16	13	13	16	16	13	14	9	4	5	4	3	2	0	0	0	1	2	3	3	3	4	10	6	7
16	4	10	13	9	9	10	8	1	4	3	2	1	4	2	2	1	0	1	4	4	4	5	12	1	5
17	3	2	3	5	6	1	1	1	0	1	1	0	0	0	0	1	0	1	0	0	1	2	2	1	1
18	2	2	0	1	4	2	2	3	1	0	2	1	0	0	1	2	2	0	1	5	3	5	8	3	2
19	4	2	5	4	4	5	7	4	2	2	2	M	M	M	3	2	0	0	1	5	3	6	6	7	4
20	8	0	2	3	11	7	2	1	2	1	2	2	2	1	1	2	1	1	2	3	9	7	8	7	4
21	5	2	3	4	5	6	1	2	21	9	1	1	0	1	1	1	2	1	4	5	14	5	12	8	5
22	17	21	21	19	35	42	32	20	14	4	2	3	6	1	1	0	2	4	4	3	7	6	0	5	11
23	19	19	7	5	6	2	7	4	11	2	1	3	7	3	4	1	2	3	0	0	18	31	20	22	8
24	22	16	20	8	6	2	15	24	24	22	12	4	8	13	15	2	4	2	6	6	31	29	33	33	15
25	32	20	18	19	42	31	29	25	24	12	1	0	1	1	0	0	5	15	12	19	38	27	33	17	
26	32	23	27	25	22	25	30	30	39	34	11	3	0	2	2	1	4	4	6	5	3	11	6	22	15
27	23	M	11	11	28	24	34	27	17	8	4	0	0	0	0	0	0	1	0	1	10	28	26	26	12
28	32	36	44	33	25	36	41	40	23	6	6	4	2	1	1	1	1	0	0	2	10	34	32	21	18
29	34	19	16	6	14	25	17	12	7	11	5	4	8	8	9	4	3	2	4	3	31	24	37	31	14
30	36	51	38	40	32	35	57	43	21	16	11	19	12	15	73	83	143	169	175	129	148	138	146	146	74
31	147	167	115	74	122	152	137	112	76	96	62	17	7	3	1	8	5	22	17	32	19	8	19	114	64

MONTHLY STATISTICS:

GEOM	ARITH-----PERCENTILES-----							RANGE-----					STN GEOM	PERCENT	NO. OF TIMES	
MEAN	MEDIAN	MEAN	50	90	95	98	99	1-HR		24-HR			DEVIATION	VALID DATA	ABOVE LIMIT LEVEL	
8	7	17	7	42	59	114	145	0	-	175	1	-	74	4	99	0

- NOTES: 1. FLAGS FOR INVALID DATA :
- D: DYNAMIC CALIBRATION
 - T: TELEMETRY/DATALOGGR FAULT
 - M: MAINTENANCE OR ANALYZER FAULT
 - P: POWER FAILURE

THE HONGKONG ELECTRIC COMPANY, LTD.
AIR QUALITY DATA MONTHLY TIME SERIES REPORT
MONTH: AUGUST

STATION : VICTORIA PEAK
POLLUTANT : SULPHUR DIOXIDE

YEAR : 2016
UNIT : MICROGRAMS/CUBIC METER

DAY	1	2	3	4	5	6	7	8	9	10	11	12	13	14	15	16	17	18	19	20	21	22	23	24	MEAN
1	3	4	5	4	3	11	13	10	10	13	11	16	21	24	22	17	11	7	4	2	1	2	2	1	9
2	1	1	0	0	0	1	1	0	2	2	2	2	0	0	0	1	1	1	1	2	2	1	1	2	1
3	1	1	1	1	1	1	1	1	1	1	2	4	2	1	1	2	0	0	0	0	0	0	0	1	1
4	0	0	1	0	0	1	0	0	1	0	0	0	0	0	0	0	0	0	0	0	1	0	0	0	0
5	0	0	0	0	0	0	0	0	1	1	0	1	4	8	16	18	5	4	6	2	2	2	9	2	3
6	2	6	6	3	2	1	2	2	2	6	13	13	10	13	11	13	11	4	5	8	3	3	3	2	6
7	1	2	2	2	1	1	2	4	4	4	9	9	7	8	7	5	7	9	15	12	6	16	11	5	6
8	6	4	2	1	2	3	5	5	4	6	4	6	9	8	9	8	11	13	21	23	11	5	7	7	
9	6	1	1	1	1	2	3	3	5	11	7	13	4	1	2	4	8	9	3	2	1	2	4	7	4
10	7	10	10	15	14	9	2	1	2	1	6	1	10	11	2	2	3	5	5	2	2	2	2	1	5
11	1	1	0	0	2	2	1	2	0	0	0	0	0	0	0	0	3	3	3	2	15	7	6	3	2
12	2	3	5	3	3	3	6	6	3	2	2	3	2	2	4	7	10	9	7	15	15	8	3	3	5
13	2	1	1	0	1	1	1	0	1	1	2	1	0	4	8	3	2	1	1	1	3	3	4	2	2
14	2	0	1	4	1	1	0	1	0	0	1	0	0	0	0	0	0	0	0	0	0	0	0	0	0
15	0	0	0	0	0	0	0	1	1	0	1	1	0	1	5	6	5	1	1	0	0	0	0	1	1
16	1	1	1	1	1	1	1	0	1	0	1	1	1	1	1	1	2	1	0	1	1	1	1	1	1
17	0	1	1	1	1	1	1	1	1	1	1	1	1	1	1	1	1	1	1	1	1	1	1	0	1
18	0	1	0	0	1	1	0	0	1	1	1	1	4	1	0	1	0	1	1	0	0	1	0	1	1
19	2	2	1	0	0	0	0	1	1	1	1	1	1	3	1	1	1	1	1	0	0	0	1	1	1
20	0	0	0	1	1	0	1	2	2	3	27	22	18	18	17	18	12	15	10	16	10	9	5	3	9
21	3	2	1	1	0	0	2	1	0	0	1	2	2	4	5	4	7	6	4	2	2	2	1	1	2
22	0	1	2	2	2	2	2	1	1	1	1	1	1	1	1	1	2	1	1	3	2	3	3	1	2
23	1	2	1	1	2	1	1	2	9	12	12	10	18	21	18	18	22	30	22	8	2	2	2	4	9
24	4	3	3	4	4	3	4	4	4	3	19	25	13	3	4	M	M	0	2	3	4	6	8	8	6
25	5	4	3	2	1	2	2	2	4	2	1	11	8	9	1	1	2	2	0	1	9	15	4		
26	14	12	17	8	7	10	25	3	3	4	11	12	7	8	7	9	11	11	8	3	1	0	1	3	8
27	5	4	8	13	13	7	5	24	9	11	19	9	10	4	5	5	3	4	5	6	9	5	7	7	8
28	3	1	1	0	0	0	1	1	1	2	2	4	2	1	1	1	1	1	1	2	2	3	4	4	2
29	5	4	5	6	7	8	8	8	10	4	2	1	1	1	1	M	3	3	3	4	3	2	2	2	4
30	1	2	3	4	4	4	4	4	5	4	4	7	8	13	13	20	22	16	19	15	48	25	7	24	12
31	21	21	10	10	8	7	5	5	5	4	3	6	7	5	14	P	P	P	P	P	P	P	P	P	P

MONTHLY STATISTICS:

GEOM	ARITH-----PERCENTILES-----								-----RANGE-----				STN GEOM	PERCENT	NO. OF TIMES	
MEAN	MEDIAN	MEAN	50	90	95	98	99	1-HR	24-HR	DEVIATION	VALID DATA	ABOVE	LIMIT	LEVEL		
3	2	4	2	11	16	21	24	0	-	48	0	-	12	3	98	0

- NOTES: 1. FLAGS FOR INVALID DATA :
- D: DYNAMIC CALIBRATION
 - T: TELEMETRY/DATALOGGR FAULT
 - M: MAINTENANCE OR ANALYZER FAULT
 - P: POWER FAILURE

THE HONGKONG ELECTRIC COMPANY, LTD.
AIR QUALITY DATA MONTHLY TIME SERIES REPORT
MONTH: AUGUST

STATION : VICTORIA PEAK
POLLUTANT : NITROGEN DIOXIDE

YEAR : 2016
UNIT : MICROGRAMS/CUBIC METER

DAY	1	2	3	4	5	6	7	8	9	10	11	12	13	14	15	16	17	18	19	20	21	22	23	24	MEAN
1	1	2	7	4	2	33	44	38	20	20	21	25	40	47	47	73	69	74	38	19	12	13	8	9	28
2	6	8	8	7	7	14	3	2	8	11	14	16	0	0	2	6	8	6	8	9	10	5	2	6	7
3	2	1	0	0	2	0	1	5	6	13	17	24	18	9	10	17	15	17	13	10	2	4	0	1	8
4	0	0	0	0	0	0	0	1	2	0	1	3	2	11	2	9	9	6	3	1	18	4	3	1	3
5	0	0	0	0	0	0	0	3	7	14	12	10	12	19	28	18	10	12	16	14	23	19	39	17	11
6	2	4	6	1	1	1	7	9	7	15	24	23	22	31	23	15	22	13	18	22	10	24	29	8	14
7	3	1	0	2	1	3	3	8	11	7	19	26	19	16	8	12	38	38	73	82	47	77	61	34	25
8	11	7	2	5	1	4	8	9	9	14	11	14	13	10	9	8	14	28	54	71	55	35	16	9	17
9	7	0	0	1	1	1	5	7	14	31	19	35	29	20	31	23	29	32	19	11	10	27	15	24	16
10	58	M	75	44	32	19	12	9	35	49	49	29	57	45	11	13	30	58	64	62	64	45	38	10	39
11	4	4	1	1	4	5	8	12	16	17	11	12	13	41	39	18	31	19	30	24	64	49	40	5	20
12	2	2	2	1	0	0	9	14	9	8	7	10	7	9	12	25	56	49	28	61	61	19	2	5	17
13	2	0	0	0	1	3	9	17	14	19	25	6	6	18	17	28	28	37	8	8	17	30	17	17	14
14	8	7	19	22	2	2	7	12	12	15	16	11	13	12	14	7	7	7	9	4	10	4	7	2	10
15	6	5	2	3	3	4	6	16	26	31	26	16	23	32	39	35	40	47	35	12	1	3	1	4	17
16	5	6	8	24	15	16	11	22	34	26	7	25	32	38	43	47	41	15	4	2	3	6	2	2	18
17	0	0	0	0	1	2	0	2	12	3	3	5	12	16	5	4	5	6	3	1	1	0	0	1	3
18	0	1	0	0	1	2	0	2	7	10	13	14	17	12	8	11	9	5	2	0	1	5	3	5	5
19	8	4	3	1	0	1	1	6	15	21	10	12	10	16	13	21	15	13	9	3	1	4	6	5	8
20	1	1	1	1	1	0	5	13	18	31	40	37	35	33	38	48	55	45	49	57	42	46	36	8	27
21	4	1	3	2	1	0	1	21	6	18	39	38	21	17	23	28	35	19	11	2	1	2	0	3	12
22	0	1	3	0	0	0	1	5	5	6	6	5	2	2	3	3	3	6	2	3	3	6	8	2	3
23	2	5	3	2	9	6	6	10	40	40	28	27	36	48	40	42	52	57	40	17	1	3	3	8	22
24	6	M	2	9	4	7	7	16	24	20	41	38	23	26	25	M	M	15	4	0	0	1	14	10	14
25	5	4	2	3	0	0	4	8	30	29	28	22	27	21	23	27	18	21	17	6	1	14	69	72	19
26	66	54	13	4	5	12	33	3	7	11	17	21	13	15	17	26	37	42	42	37	36	28	18	13	24
27	11	7	19	44	51	33	30	54	33	60	67	37	33	31	34	28	37	43	33	92	93	24	41	22	40
28	25	11	11	5	1	6	13	20	22	31	34	32	30	23	17	20	30	25	29	34	45	36	28	31	23
29	22	22	12	11	10	13	17	32	54	51	30	33	32	41	43	M	38	46	42	32	32	20	20	14	29
30	12	9	7	6	5	4	10	22	43	58	42	48	49	34	34	34	53	44	32	22	50	25	8	43	29
31	30	33	7	6	5	16	13	14	16	10	10	13	16	15	37	P	P	P	P	P	P	P	P	P	P

MONTHLY STATISTICS:

GEOM	ARITH-----PERCENTILES-----							-----RANGE-----				STN GEOM	PERCENT	NO. OF TIMES		
MEAN	MEDIAN	MEAN	50	90	95	98	99	1-HR	24-HR	DEVIATION	VALID DATA	ABOVE	LIMIT	LEVEL		
11	12	17	12	42	52	64	73	0	-	93	3	-	40	3	98	0

- NOTES: 1. FLAGS FOR INVALID DATA :
- D: DYNAMIC CALIBRATION
 - T: TELEMETRY/DATALOGGR FAULT
 - M: MAINTENANCE OR ANALYZER FAULT
 - P: POWER FAILURE

THE HONGKONG ELECTRIC COMPANY, LTD.
AIR QUALITY DATA MONTHLY TIME SERIES REPORT

STATION : CHUNG HOM KOK ZONE SUBSTATION
POLLUTANT : SULPHUR DIOXIDE

MONTH: AUGUST

YEAR : 2016

UNIT : MICROGRAMS/CUBIC METER

DAY	1	2	3	4	5	6	7	8	9	10	11	12	13	14	15	16	17	18	19	20	21	22	23	24	MEAN
1	4	6	2	1	3	2	2	4	4	8	8	8	10	14	15	14	9	2	0	0	0	0	0	0	5
2	0	0	0	0	0	0	0	0	0	0	0	0	0	0	0	0	0	1	0	1	5	1	4	2	1
3	3	1	0	1	0	0	3	3	4	1	3	8	3	1	6	0	0	0	0	1	1	0	3	2	2
4	5	3	1	1	1	2	1	2	2	1	1	0	0	0	0	0	0	0	0	0	1	0	0	0	1
5	0	0	0	0	0	0	1	1	2	1	0	0	0	4	22	19	8	16	18	22	45	25	32	19	10
6	18	36	30	15	11	7	6	27	14	29	62	17	9	14	16	14	8	10	10	4	6	10	10	4	16
7	5	9	7	9	2	5	2	3	4	25	14	12	10	14	6	5	5	8	8	9	3	9	6	7	8
8	4	7	5	2	5	5	6	12	11	32	9	13	7	13	4	9	4	5	4	9	7	2	4	15	8
9	16	14	13	7	3	2	2	27	28	27	32	12	3	0	2	1	2	2	3	1	1	2	4	10	9
10	15	3	2	1	1	1	2	0	0	0	0	0	M	1	3	5	19	8	3	1	1	0	1	0	3
11	0	0	0	1	1	0	0	0	0	0	0	0	0	0	6	34	24	15	8	5	20	23	13	6	7
12	6	14	12	8	8	25	19	26	22	15	17	13	10	8	9	10	7	12	28	20	10	10	9	5	13
13	2	3	0	1	1	0	0	0	0	1	2	0	0	0	0	0	0	0	2	3	2	5	6	7	1
14	0	0	1	4	0	0	0	0	0	0	0	0	0	0	0	0	0	0	0	0	0	0	0	0	0
15	0	0	0	0	0	0	0	0	0	0	0	0	0	1	13	8	5	0	2	1	0	0	0	0	1
16	0	0	0	13	0	0	0	0	0	0	0	0	0	0	0	0	0	0	0	0	0	1	0	0	1
17	0	0	0	0	0	0	0	0	0	0	0	0	0	0	0	0	0	0	0	0	0	0	0	0	0
18	0	0	0	0	0	0	0	0	0	0	0	2	1	0	0	0	0	1	0	0	1	0	0	1	0
19	0	0	0	0	1	1	1	0	1	1	1	1	0	0	0	0	0	0	0	0	0	0	0	3	0
20	1	3	1	2	7	14	14	6	7	4	1	2	3	11	19	18	25	19	20	13	13	10	18	9	10
21	9	14	9	0	0	0	0	2	2	1	9	19	9	8	4	6	5	8	4	0	0	1	1	5	
22	1	4	2	1	1	1	1	0	0	0	0	0	0	0	0	0	0	1	1	3	2	2	1	1	1
23	0	0	0	0	0	1	6	1	1	19	11	28	34	28	18	22	30	13	9	10	11	6	4	5	11
24	5	6	4	2	1	1	1	1	1	5	1	1	1	1	1	0	1	1	1	2	7	8	8	4	3
25	3	2	0	1	0	0	1	0	0	0	0	0	0	0	0	0	0	2	3	5	4	4	4	7	2
26	5	8	17	18	24	26	21	14	7	11	27	9	4	4	3	2	1	6	9	4	0	0	0	1	9
27	0	2	10	5	3	1	11	25	23	7	4	1	1	1	0	0	0	1	2	3	2	5	7	9	5
28	6	1	0	0	0	0	0	15	17	28	12	2	0	1	0	0	0	0	0	0	1	0	1	1	4
29	1	1	2	3	4	4	4	4	2	1	0	0	0	0	0	0	0	0	0	1	0	0	0	1	1
30	0	1	1	2	2	2	2	2	2	2	2	2	1	1	2	8	10	11	20	13	9	17	15	69	8
31	34	14	7	9	5	6	10	4	5	12	7	25	26	8	9	6	6	1	4	2	14	12	9	4	10

MONTHLY STATISTICS:

GEOM	ARITH-----PERCENTILES-----							-----RANGE-----				STN GEOM	PERCENT	NO. OF TIMES		
MEAN	MEDIAN	MEAN	50	90	95	98	99	1-HR		24-HR	DEVIATION	VALID DATA	ABOVE LIMIT LEVEL			
5	1	5	1	14	22	28	32	0	-	69	0	-	16	3	100	0

NOTES:

1. FLAGS FOR INVALID DATA :
 - D: DYNAMIC CALIBRATION
 - T: TELEMETRY/DATALOGGR FAULT
 - M: MAINTENANCE OR ANALYZER FAULT
 - P: POWER FAILURE

THE HONGKONG ELECTRIC COMPANY, LTD.
AIR QUALITY DATA MONTHLY TIME SERIES REPORT

STATION : CHUNG HOM KOK ZONE SUBSTATION
POLLUTANT : NITROGEN DIOXIDE

MONTH: AUGUST

YEAR : 2016

UNIT : MICROGRAMS/CUBIC METER

DAY	1	2	3	4	5	6	7	8	9	10	11	12	13	14	15	16	17	18	19	20	21	22	23	24	MEAN
1	3	3	2	6	5	2	17	38	33	23	29	30	38	84	77	68	85	27	8	7	5	9	7	3	25
2	0	0	1	3	1	0	0	0	0	0	0	0	0	0	0	0	2	1	3	6	22	3	14	10	3
3	10	6	2	5	4	3	14	12	15	6	11	21	18	6	12	6	2	1	11	8	5	4	9	4	8
4	8	4	2	2	5	8	6	7	9	7	4	3	1	2	2	2	1	0	0	1	2	0	0	0	3
5	0	0	2	0	0	0	3	8	7	3	0	1	0	3	20	21	8	27	33	44	57	32	25	27	13
6	32	32	33	19	23	18	12	26	17	28	38	24	19	23	29	22	21	25	35	16	17	18	18	23	24
7	16	16	14	17	8	17	12	12	10	20	18	19	18	27	16	20	25	37	39	43	21	24	17	17	20
8	14	19	16	20	15	12	13	23	20	31	15	17	13	16	13	20	15	24	19	25	15	11	39	33	19
9	30	27	27	16	14	11	7	43	33	33	44	32	17	15	26	37	38	33	40	26	29	21	45	67	30
10	80	M	13	10	9	8	16	12	9	16	17	19	M	16	17	22	48	38	18	16	16	9	15	6	20
11	3	2	3	5	5	3	5	9	5	10	16	26	19	18	41	65	58	44	39	30	58	64	41	18	24
12	13	24	19	11	9	28	18	36	31	24	28	23	24	18	20	17	16	20	39	32	18	13	11	10	21
13	7	8	0	0	0	0	1	3	6	4	3	0	0	1	1	3	2	4	11	8	6	9	11	17	4
14	3	0	4	18	3	0	2	0	0	1	1	1	1	0	0	0	1	0	1	1	0	0	0	3	2
15	1	3	4	4	2	1	4	5	3	3	4	6	7	11	49	51	40	8	25	16	7	4	2	1	11
16	0	2	1	39	0	1	2	2	6	1	0	1	3	3	14	12	15	10	3	6	5	8	5	2	6
17	0	0	1	0	0	0	0	2	0	0	0	0	0	0	0	1	0	0	1	7	8	6	1	1	1
18	0	4	0	0	4	1	3	3	5	4	7	10	5	5	1	6	5	10	6	2	6	5	8	8	5
19	5	4	0	0	3	2	3	3	4	5	2	3	2	0	1	2	2	7	6	1	1	6	15	19	4
20	15	15	3	5	10	21	14	7	5	10	5	2	4	21	17	33	27	27	31	34	73	44	30	16	20
21	17	22	20	53	1	1	6	18	34	39	36	75	49	30	25	15	17	23	109	27	6	0	1	0	26
22	0	0	0	0	0	0	0	1	0	0	M	M	0	0	0	0	0	5	3	7	3	4	4	5	1
23	2	0	0	0	2	6	15	7	7	17	12	27	27	26	20	23	36	18	17	13	14	9	5	6	13
24	6	M	3	1	0	4	4	6	9	10	4	M	4	3	2	2	3	4	6	8	9	7	8	8	5
25	4	2	0	3	1	0	2	7	6	6	5	3	2	2	3	3	7	10	10	12	7	8	12	12	5
26	9	12	22	24	27	24	29	26	12	17	21	13	9	13	9	10	15	27	34	39	28	15	9	9	19
27	6	14	60	20	24	15	44	66	56	30	20	12	11	8	8	7	10	10	8	8	6	8	16	9	20
28	10	19	14	13	5	3	3	63	62	61	42	14	12	14	13	10	8	12	13	8	10	6	5	8	18
29	6	6	7	6	6	4	4	7	9	8	6	3	3	5	7	5	8	10	10	9	7	9	5	5	6
30	3	5	4	3	3	3	4	8	12	12	17	12	3	5	8	20	20	17	34	20	15	15	13	77	14
31	29	12	3	6	3	3	11	12	17	26	19	45	38	19	23	18	26	12	15	18	25	23	24	20	19

MONTHLY STATISTICS:

GEOM	ARITH-----PERCENTILES-----							-----RANGE-----					STN GEOM	PERCENT	NO. OF TIMES	
MEAN	MEDIAN	MEAN	50	90	95	98	99	1-HR		24-HR			DEVIATION	VALID DATA	ABOVE LIMIT LEVEL	
9	8	13	8	32	41	61	71	0	-	109	1	-	30	3	99	0

NOTES: 1. FLAGS FOR INVALID DATA :
D: DYNAMIC CALIBRATION
T: TELEMETRY/DATALOGGR FAULT
M: MAINTENANCE OR ANALYZER FAULT
P: POWER FAILURE

THE HONGKONG ELECTRIC COMPANY, LTD.
AIR QUALITY DATA MONTHLY TIME SERIES REPORT
MONTH: AUGUST

STATION : VICTORIA ROAD SUBSTATION
POLLUTANT : SULPHUR DIOXIDE

YEAR : 2016
UNIT : MICROGRAMS/CUBIC METER

DAY	1	2	3	4	5	6	7	8	9	10	11	12	13	14	15	16	17	18	19	20	21	22	23	24	MEAN
1	2	1	4	3	4	4	5	4	5	6	5	6	9	10	7	6	12	4	2	1	1	1	2	1	4
2	0	0	1	1	0	1	0	0	0	0	0	0	0	0	0	0	0	0	0	0	0	0	0	1	0
3	1	0	0	0	1	1	1	0	1	1	1	1	1	1	1	1	1	0	0	0	0	0	0	1	1
4	0	1	1	1	1	1	0	1	1	1	0	1	0	0	1	3	4	4	5	5	5	4	3	2	2
5	2	2	2	3	2	1	2	2	2	2	1	2	3	2	11	3	3	8	16	16	15	14	10	8	6
6	8	9	9	5	3	3	3	3	3	4	7	7	4	4	4	4	4	3	3	4	3	3	3	2	4
7	2	2	2	2	2	1	2	2	2	3	5	4	4	4	3	3	3	3	4	4	3	3	2	2	3
8	2	2	1	1	1	2	1	3	3	4	2	2	3	3	2	3	3	5	3	3	2	2	2	5	3
9	3	2	1	1	1	1	1	7	7	4	4	7	4	1	1	2	4	2	2	2	2	1	4	2	3
10	8	9	5	5	4	3	2	1	1	1	3	3	2	2	2	2	3	6	6	3	3	3	3	5	4
11	3	2	3	2	4	6	5	4	2	2	2	2	1	2	3	10	7	10	5	2	2	5	4	3	4
12	2	2	2	2	3	3	4	4	3	3	2	2	2	2	2	2	4	4	4	5	4	4	2	2	3
13	2	1	1	1	4	3	11	16	5	5	5	2	1	3	4	3	3	4	1	1	2	2	3	4	4
14	2	1	1	1	1	1	1	2	1	1	1	1	0	0	0	1	0	1	1	1	1	0	0	1	1
15	1	1	1	1	1	1	1	1	1	1	1	7	4	3	4	4	2	1	1	2	2	1	1	1	2
16	1	0	3	4	2	2	2	2	2	1	1	1	1	1	4	5	7	3	2	1	1	1	0	2	2
17	1	1	2	2	1	1	1	1	1	1	2	1	2	1	2	1	2	2	2	2	2	2	2	2	2
18	0	1	1	0	1	1	1	0	0	1	1	2	1	1	1	1	0	0	0	0	0	0	0	1	1
19	1	2	2	1	1	1	1	1	1	1	1	1	1	1	1	0	1	1	1	1	1	1	1	1	1
20	1	1	1	2	3	2	3	3	4	7	22	6	11	10	6	8	9	8	19	10	5	2	3	3	6
21	3	3	3	1	1	1	2	2	2	2	3	3	5	2	2	3	3	4	2	2	3	1	1	3	2
22	7	5	9	12	9	4	5	12	3	1	1	1	1	1	0	1	1	1	1	1	1	1	1	1	3
23	1	1	1	1	3	2	1	2	3	7	6	10	14	11	5	7	18	19	14	9	3	2	2	2	6
24	2	2	2	2	2	3	5	9	9	11	16	14	6	4	4	3	2	2	1	1	2	2	2	3	5
25	2	2	1	1	1	2	2	4	11	19	11	13	7	5	7	2	M	2	2	2	3	2	3	6	5
26	6	5	8	7	9	11	8	4	3	4	5	5	3	3	2	2	8	15	11	3	1	1	1	1	5
27	2	6	3	3	2	13	10	6	4	7	9	6	1	1	2	1	1	5	1	1	7	5	2	3	4
28	2	1	1	0	0	0	1	2	2	4	3	2	1	1	1	1	1	1	1	1	1	1	1	2	1
29	3	2	2	2	2	3	3	3	3	2	1	1	1	1	1	1	0	1	1	1	1	1	1	1	2
30	1	1	1	1	2	1	1	2	4	5	4	3	2	2	4	6	7	6	5	4	9	8	5	10	4
31	6	6	7	6	4	3	2	3	5	2	2	5	1	2	4	3	4	2	1	1	1	1	1	2	3

MONTHLY STATISTICS:

GEOM	ARITH-----PERCENTILES-----							RANGE-----				STN GEOM	PERCENT	NO. OF TIMES		
MEAN	MEDIAN	MEAN	50	90	95	98	99	1-HR		24-HR		DEVIATION	VALID DATA	ABOVE LIMIT LEVEL		
2	2	3	2	7	10	13	16	0	-	22	0	-	6	2	100	0

- NOTES: 1. FLAGS FOR INVALID DATA :
- D: DYNAMIC CALIBRATION
 - T: TELEMETRY/DATALOGGR FAULT
 - M: MAINTENANCE OR ANALYZER FAULT
 - P: POWER FAILURE

THE HONGKONG ELECTRIC COMPANY, LTD.
AIR QUALITY DATA MONTHLY TIME SERIES REPORT
MONTH: AUGUST

STATION : VICTORIA ROAD SUBSTATION
POLLUTANT : NITROGEN DIOXIDE

YEAR : 2016
UNIT : MICROGRAMS/CUBIC METER

DAY	1	2	3	4	5	6	7	8	9	10	11	12	13	14	15	16	17	18	19	20	21	22	23	24	MEAN
1	13	11	34	21	26	29	41	37	33	28	28	34	52	58	58	58	82	59	27	22	24	19	14	9	34
2	6	6	8	8	8	20	13	8	4	3	M	M	M	M	M	M	14	18	17	13	12	10	8	9	10
3	8	7	5	5	7	5	9	12	12	13	16	17	20	15	15	16	16	13	13	11	9	8	6	11	11
4	10	9	8	8	9	9	11	11	14	14	12	M	M	M	M	M	19	15	14	13	14	13	12	5	12
5	5	4	6	15	7	5	9	14	14	13	13	13	14	12	24	14	12	11	18	17	23	25	21	12	13
6	12	16	17	10	7	8	10	11	11	16	20	20	16	17	18	16	15	13	11	15	15	15	14	9	14
7	9	9	9	8	7	7	10	11	8	11	13	15	12	12	9	12	14	15	20	24	21	23	16	15	13
8	12	12	9	10	10	10	14	17	17	19	13	11	13	10	10	14	15	21	24	26	23	16	17	20	15
9	13	8	6	6	6	6	13	24	21	23	28	33	34	42	38	31	29	34	33	16	33	24	34	29	24
10	45	M	43	36	26	29	21	26	40	48	50	50	29	26	19	16	22	35	43	45	45	36	37	37	35
11	12	9	17	7	24	36	31	31	25	36	43	30	24	28	43	46	38	39	35	33	29	44	32	18	30
12	14	15	11	11	11	11	20	25	20	15	16	16	13	9	10	10	18	21	15	31	35	26	17	12	17
13	10	6	6	5	20	19	31	26	17	20	23	16	11	15	15	15	14	23	20	17	16	15	13	26	17
14	16	12	15	14	16	13	17	20	12	11	10	9	9	8	8	7	7	7	7	6	7	7	7	8	11
15	7	7	5	10	8	13	11	19	13	14	15	22	28	29	30	28	32	51	38	31	27	14	11	9	20
16	8	8	25	25	17	18	21	24	22	16	12	11	15	24	31	34	35	29	17	12	10	9	9	8	18
17	6	5	5	5	5	6	8	8	11	10	10	9	8	11	10	8	8	12	11	10	11	9	7	7	8
18	6	7	5	5	8	10	9	11	19	17	15	M	M	M	M	M	13	13	12	9	9	12	11	8	10
19	9	13	8	4	3	4	5	7	9	9	7	6	6	6	7	8	8	9	11	8	6	7	8	10	7
20	10	9	9	12	14	13	18	15	15	17	21	17	20	25	19	23	28	23	36	34	20	16	21	13	19
21	12	14	12	6	9	14	30	36	41	32	31	29	21	24	13	11	15	16	26	25	29	30	9	23	21
22	50	41	45	55	45	19	30	36	13	11	11	10	10	9	9	10	11	14	14	12	11	14	12	8	21
23	8	8	7	3	13	14	12	17	14	17	18	20	22	23	15	16	35	35	40	41	26	21	16	19	19
24	17	M	15	10	10	15	24	30	21	21	23	23	17	15	19	17	16	19	17	12	11	10	16	13	17
25	10	8	7	9	6	10	21	26	25	30	28	26	22	19	21	13	M	18	26	22	39	38	30	31	21
26	34	34	25	20	19	24	21	17	12	12	14	17	13	9	9	10	22	32	53	35	31	28	21	15	22
27	28	42	27	20	26	44	36	36	27	33	34	30	18	17	19	15	22	35	30	50	63	37	31	23	31
28	22	16	14	9	12	8	33	45	35	35	32	25	19	20	17	14	16	19	19	21	24	21	18	21	21
29	20	17	13	12	10	11	17	26	28	35	20	17	19	16	21	24	20	26	28	24	21	18	16	13	20
30	12	11	9	10	11	10	16	35	44	56	51	42	28	16	18	21	23	27	33	26	33	30	36	38	27
31	24	25	27	23	13	11	30	43	34	20	14	14	10	16	18	19	21	19	20	28	25	18	21	24	22

MONTHLY STATISTICS:

GEOM	ARITH ----- PERCENTILES -----							----- RANGE -----					STN GEOM	PERCENT	NO. OF TIMES	
MEAN	MEDIAN	MEAN	50	90	95	98	99	1-HR	24-HR		DEVIATION	VALID DATA	ABOVE	LIMIT	LEVEL	
16	16	19	16	35	41	50	55	3	-	82	7	-	35	2	97	0

- NOTES: 1. FLAGS FOR INVALID DATA :
- D: DYNAMIC CALIBRATION
 - T: TELEMETRY/DATALOGGR FAULT
 - M: MAINTENANCE OR ANALYZER FAULT
 - P: POWER FAILURE

THE HONGKONG ELECTRIC COMPANY, LTD.
AIR QUALITY DATA MONTHLY TIME SERIES REPORT
MONTH: AUGUST

STATION : POK FU LAM
POLLUTANT : SULPHUR DIOXIDE

YEAR : 2016
UNIT : MICROGRAMS/CUBIC METER

DAY	1	2	3	4	5	6	7	8	9	10	11	12	13	14	15	16	17	18	19	20	21	22	23	24	MEAN
1	1	1	14	14	20	33	26	13	15	17	11	19	27	29	21	22	24	10	1	0	0	0	1	2	13
2	1	1	1	1	2	2	2	3	3	3	2	2	2	1	2	3	4	3	4	4	4	5	4	6	3
3	5	5	4	4	5	4	4	4	4	4	6	M	0	0	0	0	0	0	0	0	0	0	0	3	2
4	3	3	2	2	2	2	2	2	2	1	0	0	2	3	2	2	2	2	2	2	2	3	3	2	2
5	2	2	4	7	5	3	3	4	23	24	6	0	12	12	27	9	6	9	13	8	17	11	9	9	9
6	12	28	17	6	3	3	3	4	5	13	25	29	12	15	14	20	16	9	7	14	6	5	5	5	12
7	5	5	5	7	6	5	5	9	11	14	36	24	16	16	22	15	9	14	19	19	17	14	12	11	13
8	10	10	7	6	5	6	9	12	13	18	10	7	13	14	15	29	14	28	16	18	15	15	11	23	14
9	17	10	8	9	9	10	11	24	29	18	27	45	20	11	10	12	19	15	13	12	14	16	30	16	17
10	18	29	22	21	27	21	17	15	15	14	17	18	17	20	18	18	19	27	31	20	42	25	25	35	22
11	19	19	24	17	19	30	28	26	19	19	19	18	19	19	20	37	42	46	31	22	21	23	24	28	25
12	25	28	28	28	30	29	34	35	31	33	28	M	M	M	M	M	1	6	8	2	5	2	0	3	19
13	1	0	6	0	7	1	0	2	16	23	7	2	2	11	7	3	2	11	1	0	0	1	2	4	5
14	2	0	1	1	1	2	1	6	0	3	0	0	0	0	0	0	0	0	0	0	0	0	0	0	1
15	0	0	0	1	0	0	0	0	0	0	10	21	9	4	10	16	3	0	0	1	1	0	0	0	3
16	0	0	17	10	3	1	0	1	1	0	0	0	0	0	3	12	19	7	0	0	0	0	0	0	3
17	0	0	0	0	0	0	0	0	0	0	0	0	0	0	0	0	0	0	0	0	0	0	0	0	0
18	0	0	0	0	1	1	0	0	0	2	2	2	4	2	0	0	0	0	0	0	0	0	0	1	1
19	2	3	2	0	0	0	0	0	0	0	0	0	0	0	0	0	0	0	0	0	0	0	0	1	0
20	1	1	3	2	4	2	6	6	9	22	78	16	72	35	18	20	28	19	46	22	10	5	6	8	18
21	8	9	4	0	0	0	4	2	3	3	3	8	5	18	8	4	7	4	12	12	4	6	1	5	5
22	21	24	39	35	20	9	13	41	13	0	0	0	0	0	0	0	0	0	0	1	1	1	1	1	9
23	1	1	0	0	6	4	3	3	9	27	13	25	82	20	9	11	50	35	34	11	3	1	1	4	15
24	4	5	11	12	8	5	11	29	42	49	44	31	21	17	38	30	16	5	1	2	3	4	6	6	17
25	4	3	3	3	3	3	8	18	40	57	47	27	15	14	19	5	8	3	2	9	4	9	13	13	
26	16	13	17	16	14	34	27	8	10	9	26	24	10	7	6	7	18	25	18	3	1	0	0	2	13
27	13	24	20	13	6	26	52	19	22	21	43	25	13	20	9	5	4	32	5	5	36	17	7	9	19
28	3	0	0	0	0	0	0	0	4	7	6	2	1	3	2	1	0	0	0	0	0	1	2	4	2
29	4	4	3	4	5	7	8	6	7	4	1	0	0	0	0	0	0	0	0	1	1	0	0	1	2
30	0	1	2	3	12	17	9	3	11	6	12	15	10	15	13	25	20	16	17	13	35	28	17	29	14
31	22	29	22	18	13	6	5	5	9	4	4	17	2	4	7	9	14	3	2	3	5	3	6	4	9

MONTHLY STATISTICS:

GEOM	ARITH-----PERCENTILES-----									-----RANGE-----				STN GEOM	PERCENT	NO. OF TIMES
MEAN	MEDIAN	MEAN	50	90	95	98	99	1-HR	24-HR	DEVIATION	VALID DATA	ABOVE	LIMIT	LEVEL		
8	5	10	5	25	31	42	47	0	-	82	0	-	25	3	99	0

NOTES: 1. FLAGS FOR INVALID DATA :
D: DYNAMIC CALIBRATION
T: TELEMETRY/DATALOGGR FAULT
M: MAINTENANCE OR ANALYZER FAULT
P: POWER FAILURE

THE HONGKONG ELECTRIC COMPANY, LTD.
AIR QUALITY DATA MONTHLY TIME SERIES REPORT
MONTH: AUGUST

STATION : POK FU LAM
POLLUTANT : NITROGEN DIOXIDE

YEAR : 2016
UNIT : MICROGRAMS/CUBIC METER

DAY	1	2	3	4	5	6	7	8	9	10	11	12	13	14	15	16	17	18	19	20	21	22	23	24	MEAN
1	5	4	52	53	49	62	70	48	37	38	32	46	60	65	66	97	105	101	39	35	35	30	19	11	48
2	6	5	8	8	9	2	16	19	8	0	0	1	3	4	7	12	18	16	9	9	9	5	3	7	8
3	4	2	0	1	5	1	3	6	8	10	21	M	25	11	12	9	6	9	8	8	5	4	4	4	7
4	4	3	0	0	0	0	2	5	6	5	2	3	12	22	8	14	15	10	8	8	23	18	11	4	8
5	2	0	12	20	8	0	4	11	33	37	15	9	18	16	23	9	6	11	22	23	37	19	24	14	16
6	8	24	19	8	5	11	26	28	16	31	32	30	18	28	27	19	23	21	15	20	8	11	11	9	19
7	5	3	5	7	3	4	6	12	9	15	22	24	13	14	11	12	11	20	33	37	28	27	13	22	15
8	17	15	13	19	6	7	12	20	18	28	17	9	13	7	12	24	16	37	41	43	26	17	10	24	19
9	14	4	1	2	2	2	12	37	43	41	49	61	49	53	52	28	39	57	46	54	54	60	102	62	39
10	66	94	74	63	51	24	26	29	61	73	84	71	46	53	18	16	41	72	85	80	89	60	60	61	58
11	8	19	29	1	8	44	39	33	24	34	76	34	34	48	59	80	36	66	42	28	34	33	22	18	35
12	6	12	6	7	7	6	18	31	22	20	16	22	18	14	9	11	23	33	38	31	65	44	33	13	21
13	10	5	23	6	26	10	18	26	30	38	33	26	26	30	19	23	20	50	37	23	19	17	13	17	23
14	13	M	35	20	20	30	11	19	4	17	5	7	10	5	6	9	10	10	8	6	8	5	4	7	12
15	4	2	1	7	7	8	8	9	16	26	50	55	57	46	49	47	56	84	67	53	44	20	18	8	31
16	5	8	62	54	37	22	18	44	48	21	15	14	22	34	53	64	63	48	14	7	5	3	4	4	28
17	2	1	0	1	1	5	4	6	18	10	10	10	12	18	11	9	10	17	15	7	7	3	2	2	8
18	0	2	0	1	3	6	2	4	13	16	13	11	14	10	6	6	7	8	6	2	3	5	6	4	6
19	7	11	7	0	0	0	1	4	7	8	6	4	2	3	5	5	6	10	8	5	2	3	3	5	5
20	3	3	7	4	6	4	18	16	28	33	42	26	41	39	19	30	44	32	54	45	20	12	12	13	23
21	14	15	8	3	7	23	39	57	69	60	46	54	29	43	21	15	17	12	37	51	31	57	15	40	32
22	77	88	96	85	73	35	32	67	25	10	7	7	5	4	5	2	13	14	12	8	14	16	18	6	30
23	5	6	7	4	29	29	27	26	35	42	23	33	41	27	13	16	47	42	64	60	48	31	26	34	30
24	24	28	33	31	20	14	38	51	46	46	46	31	20	21	47	43	36	36	23	4	8	18	30	25	30
25	8	6	8	9	8	10	26	56	64	71	61	44	30	23	27	19	22	24	36	41	59	49	52	39	33
26	58	61	29	17	14	36	37	16	15	10	20	26	12	9	7	14	32	59	64	49	40	36	24	13	29
27	34	78	53	41	22	56	77	64	61	63	66	43	31	39	29	19	13	54	43	80	105	62	32	28	50
28	30	M	15	9	8	12	31	30	54	44	49	34	33	34	27	23	26	28	32	38	43	39	40	47	32
29	33	30	23	16	15	13	17	35	51	45	24	21	14	17	19	25	27	23	25	24	23	22	19	17	24
30	14	10	7	7	25	41	34	38	92	78	90	74	51	44	23	37	31	37	34	27	46	36	36	34	39
31	25	40	25	21	14	5	14	20	42	16	9	23	14	16	13	21	27	17	21	21	22	12	24	25	20

MONTHLY STATISTICS:

GEOM		ARITH ----- PERCENTILES -----							----- RANGE -----					STN GEOM	PERCENT	NO. OF TIMES
MEAN	MEDIAN	MEAN	50	90	95	98	99	1-HR	24-HR	DEVIATION	VALID DATA	ABOVE	LIMIT	LEVEL		
17	19	25	19	56	66	81	91	0	-	105	5	-	58	3	100	0

NOTES: 1. FLAGS FOR INVALID DATA :
D: DYNAMIC CALIBRATION
T: TELEMETRY/DATALOGGR FAULT
M: MAINTENANCE OR ANALYZER FAULT
P: POWER FAILURE

THE HONGKONG ELECTRIC COMPANY, LTD.
AIR QUALITY DATA MONTHLY TIME SERIES REPORT
MONTH: AUGUST

STATION : AP LEI CHAU
POLLUTANT : SULPHUR DIOXIDE

YEAR : 2016
UNIT : MICROGRAMS/CUBIC METER

DAY	1	2	3	4	5	6	7	8	9	10	11	12	13	14	15	16	17	18	19	20	21	22	23	24	MEAN
1																									
2																									
3																									
4																									
5																									
6																									
7																									
8																									
9																									
10																									
11																									
12																									
13																									
14																									
15																									
16																									
17																									
18																									
19																									
20																									
21																									
22																									
23																									
24																									
25																									
26																									
27																									
28																									
29																									
30																									
31																									

AMBIENT AIR MONITORING AT AP LEI CHAU TEMPORARILY SUSPENDED

THE HONGKONG ELECTRIC COMPANY, LTD.
AIR QUALITY DATA MONTHLY TIME SERIES REPORT
MONTH: AUGUST

STATION : AP LEI CHAU
POLLUTANT : NITROGEN DIOXIDE

YEAR : 2016
UNIT : MICROGRAMS/CUBIC METER

DAY	1	2	3	4	5	6	7	8	9	10	11	12	13	14	15	16	17	18	19	20	21	22	23	24	MEAN
1																									
2																									
3																									
4																									
5																									
6																									
7																									
8																									
9																									
10																									
11																									
12																									
13																									
14																									
15																									
16																									
17																									
18																									
19																									
20																									
21																									
22																									
23																									
24																									
25																									
26																									
27																									
28																									
29																									
30																									
31																									

AMBIENT AIR MONITORING AT AP LEI CHAU TEMPORARILY SUSPENDED

THE HONGKONG ELECTRIC COMPANY, LTD.
AIR QUALITY DATA MONTHLY TIME SERIES REPORT
MONTH: AUGUST

STATION : CHEUNG CHAU
POLLUTANT : SULPHUR DIOXIDE

YEAR : 2016
UNIT : MICROGRAMS/CUBIC METER

DAY	1	2	3	4	5	6	7	8	9	10	11	12	13	14	15	16	17	18	19	20	21	22	23	24	MEAN
1	9	8	10	10	6	3	2	7	7	5	6	8	17	25	16	9	7	8	7	1	1	2	1	3	7
2	0	0	0	0	0	0	0	0	0	0	0	0	0	0	0	0	0	0	0	1	3	2	1	5	1
3	2	3	2	0	0	0	2	4	7	7	0	0	0	0	4	7	1	0	2	2	2	2	2	9	2
4	5	8	8	6	2	1	1	0	1	1	1	3	0	0	2	1	1	1	2	2	5	3	4	8	3
5	5	2	2	4	1	2	6	8	7	7	11	9	6	8	13	8	18	31	14	8	10	13	12	15	9
6	15	12	19	5	4	1	2	5	3	5	5	9	9	7	12	4	0	0	1	0	0	0	0	3	5
7	0	0	0	0	0	0	0	0	3	4	3	2	1	3	10	2	2	0	0	0	0	0	0	3	1
8	2	0	0	0	0	0	0	1	3	3	1	1	3	8	5	1	2	0	0	0	0	0	0	2	1
9	0	0	0	0	0	0	0	0	4	4	3	7	1	2	0	0	0	0	0	2	1	4	4	4	2
10	2	10	16	11	6	3	0	0	0	0	0	0	1	1	0	1	0	8	6	2	0	1	2	5	3
11	1	0	0	0	0	0	1	0	0	0	0	0	0	0	1	0	0	0	2	1	3	1	2	4	1
12	2	2	2	4	3	4	5	3	2	2	1	0	1	3	1	0	0	0	1	1	1	1	6	11	2
13	7	9	5	3	3	3	5	11	17	6	3	3	1	0	1	11	12	11	11	6	4	3	5	10	6
14	9	7	0	0	0	0	0	4	10	6	3	1	0	0	0	0	0	0	0	0	0	0	0	2	2
15	0	0	0	1	2	4	4	6	3	4	1	1	1	0	0	0	0	0	0	0	0	0	1	4	1
16	1	1	2	3	3	2	1	0	0	1	2	2	3	4	2	0	1	4	1	0	0	0	0	3	2
17	0	0	0	0	0	0	0	0	0	0	0	0	0	0	0	0	0	0	0	0	0	0	0	2	0
18	1	0	0	0	0	0	0	0	0	0	0	0	0	1	0	0	0	2	2	1	0	0	0	2	0
19	0	0	0	0	2	2	1	2	2	2	3	2	1	4	1	1	1	0	0	0	0	1	4	7	2
20	5	6	7	7	4	2	4	4	7	4	2	1	0	1	0	10	4	5	5	1	2	1	1	6	4
21	5	3	0	0	0	0	1	0	0	0	0	0	0	0	0	0	0	1	0	0	1	0	4	1	
22	2	2	2	2	3	5	9	11	11	8	2	0	0	0	0	1	3	3	8	4	4	2	2	7	4
23	5	4	3	2	2	1	2	4	4	3	3	2	2	18	21	16	14	12	6	8	16	14	11	11	8
24	8	6	5	5	5	3	3	9	7	4	4	7	10	8	4	8	1	1	0	3	10	9	7	12	6
25	7	5	5	4	5	4	8	10	12	8	7	4	5	5	1	5	3	9	3	1	0	0	2	5	5
26	3	6	10	11	3	2	1	3	2	2	2	5	5	1	2	7	3	8	8	1	2	0	0	2	4
27	1	0	2	1	2	2	2	3	5	6	5	15	3	2	1	0	1	5	9	7	6	9	7	10	4
28	4	0	0	0	0	0	7	1	0	1	0	0	0	1	0	0	0	0	0	1	1	1	0	4	1
29	2	1	1	2	3	5	4	4	8	13	11	1	0	0	1	1	0	0	1	0	2	2	3	5	3
30	3	2	4	4	3	2	3	3	3	3	3	8	6	7	6	6	5	2	4	4	2	3	2	5	4
31	6	4	3	2	1	2	3	5	8	7	5	1	1	4	3	2	0	0	0	0	0	0	0	2	2

MONTHLY STATISTICS:

GEOM	ARITH-----PERCENTILES-----										RANGE-----		STN GEOM	PERCENT	NO. OF TIMES	
MEAN	MEDIAN	MEAN	50	90	95	98	99	1-HR		24-HR		DEVIATION	VALID DATA	ABOVE	LIMIT	LEVEL
3	2	3	2	8	11	14	17	0	-	31	0	-	9	2	100	0

- NOTES: 1. FLAGS FOR INVALID DATA :
- D: DYNAMIC CALIBRATION
 - T: TELEMETRY/DATALOGGR FAULT
 - M: MAINTENANCE OR ANALYZER FAULT
 - P: POWER FAILURE

THE HONGKONG ELECTRIC COMPANY, LTD.
AIR QUALITY DATA MONTHLY TIME SERIES REPORT
MONTH: AUGUST

STATION : CHEUNG CHAU
POLLUTANT : NITROGEN DIOXIDE

YEAR : 2016
UNIT : MICROGRAMS/CUBIC METER

DAY	1	2	3	4	5	6	7	8	9	10	11	12	13	14	15	16	17	18	19	20	21	22	23	24	MEAN
1	100	76	91	91	71	66	53	88	69	38	19	40	70	111	84	86	96	190	139	65	59	49	35	21	75
2	17	12	10	9	11	1	0	0	0	0	0	0	0	0	1	3	22	17	8	16	29	19	13	20	9
3	19	11	10	11	10	19	23	27	26	26	4	10	7	6	14	13	50	13	21	17	15	19	17	37	18
4	42	49	51	46	22	23	22	8	7	7	6	8	3	11	42	21	51	52	63	68	70	54	55	48	35
5	46	43	38	57	21	39	57	37	15	9	15	13	8	8	19	17	25	43	33	31	62	76	68	51	35
6	53	55	56	41	37	23	47	47	18	16	13	18	26	25	25	10	6	6	26	65	69	26	52	37	33
7	12	20	14	7	4	6	13	22	24	18	10	10	11	14	13	14	20	17	13	10	37	36	24	24	16
8	21	2	4	12	12	18	25	34	39	23	16	6	10	9	14	8	17	9	14	14	50	32	23	29	18
9	10	11	14	11	8	11	28	23	37	46	29	29	16	68	42	28	63	69	85	124	118	130	123	107	51
10	107	M	109	91	57	46	21	41	71	47	32	48	41	36	28	21	28	56	76	44	31	63	86	71	54
11	27	5	4	5	25	35	48	22	3	44	58	47	55	59	60	56	47	14	43	73	86	82	84	54	43
12	83	78	75	39	46	31	48	27	21	17	55	M	1	4	8	0	0	16	63	85	97	63	91	28	42
13	17	31	21	11	24	35	54	56	55	16	12	6	2	0	1	13	23	23	31	22	13	13	27	51	23
14	47	41	2	1	4	17	36	33	27	21	18	8	3	13	2	1	3	3	6	4	3	6	46	41	16
15	44	41	51	46	40	43	42	39	42	40	41	47	40	36	35	33	29	67	31	9	6	13	9	31	36
16	43	65	67	51	47	40	30	39	29	46	57	59	55	68	65	30	14	35	10	6	4	3	4	4	36
17	1	5	1	6	19	18	11	8	5	21	5	21	20	26	3	13	7	12	14	4	4	6	2	0	10
18	9	2	0	3	0	0	1	2	0	0	0	1	1	6	4	1	1	11	10	11	5	2	0	0	3
19	0	3	0	4	19	17	14	15	9	6	8	3	0	4	0	0	1	2	2	6	5	20	38	37	9
20	45	38	43	43	33	32	40	30	16	14	9	2	0	7	6	23	3	9	20	20	23	15	22	34	22
21	27	18	28	3	3	22	32	41	28	31	43	39	40	10	3	6	4	9	3	10	75	93	87	74	30
22	40	47	77	62	56	70	98	78	52	45	2	0	0	0	0	2	6	5	19	8	15	32	8	29	31
23	38	23	44	29	26	25	36	36	31	24	22	13	10	28	34	32	25	16	8	23	44	68	34	59	30
24	68	M	39	41	11	41	38	50	42	35	31	27	16	3	0	6	1	1	0	15	17	15	8	12	22
25	11	5	10	16	12	36	64	55	40	36	46	45	11	8	1	6	1	11	6	6	2	3	13	21	19
26	28	26	42	48	16	10	11	9	8	4	2	5	3	0	0	6	0	6	33	27	59	34	50	15	18
27	29	30	48	50	54	56	37	36	45	57	33	44	9	4	1	1	12	20	31	31	71	27	32	32	33
28	32	3	17	26	20	40	105	48	39	52	37	54	36	34	33	35	31	47	45	35	54	50	37	27	39
29	22	19	23	17	10	11	14	32	41	52	60	16	37	46	55	47	20	63	96	63	86	73	77	30	42
30	42	44	47	37	32	41	79	58	57	75	74	58	38	29	8	1	4	0	1	2	1	29	54	53	36
31	61	54	27	19	32	33	42	51	81	34	32	3	0	4	0	0	0	1	22	33	11	67	30	6	27

MONTHLY STATISTICS:

GEOM	ARITH-----PERCENTILES-----										RANGE-----				STN GEOM	PERCENT	NO. OF TIMES
MEAN	MEDIAN	MEAN	50	90	95	98	99	1-HR		24-HR		DEVIATION	VALID DATA	ABOVE	LIMIT	LEVEL	
20	23	29	23	63	77	96	108	0	-	190	3	-	75	3	100	0	

- NOTES: 1. FLAGS FOR INVALID DATA :
- D: DYNAMIC CALIBRATION
 - T: TELEMETRY/DATALOGGR FAULT
 - M: MAINTENANCE OR ANALYZER FAULT
 - P: POWER FAILURE

THE HONGKONG ELECTRIC COMPANY, LTD.
AIR QUALITY DATA MONTHLY TIME SERIES REPORT
MONTH: SEPTEMBER

STATION : VICTORIA PEAK
POLLUTANT : SULPHUR DIOXIDE

YEAR : 2016
UNIT : MICROGRAMS/CUBIC METER

DAY	1	2	3	4	5	6	7	8	9	10	11	12	13	14	15	16	17	18	19	20	21	22	23	24	MEAN
1	P	P	P	P	P	P	P	P	P	P	P	P	P	P	P	P	16	14	10	9	9	8	10	4	
2	5	4	5	3	2	2	2	2	2	2	2	3	2	3	3	3	4	3	3	2	2	2	2	2	3
3	1	2	2	2	1	1	1	2	2	2	2	1	2	2	2	2	2	2	2	2	2	2	1	2	2
4	1	2	2	2	2	2	2	2	2	2	2	2	2	2	2	2	2	2	2	2	2	2	2	1	2
5	1	1	1	2	2	2	1	2	2	2	2	2	2	2	2	2	2	2	2	2	2	2	2	2	2
6	2	2	2	2	2	2	2	2	2	2	2	2	4	5	2	3	3	3	3	3	2	2	2	2	2
7	2	2	2	2	2	2	2	2	2	2	2	M	3	2	2	2	2	2	2	2	2	1	2	2	
8	1	1	1	1	1	1	1	1	2	1	1	1	1	1	1	2	2	2	2	2	1	1	1	1	1
9	1	1	1	1	1	1	1	1	1	1	1	1	1	1	1	2	3	1	3	2	0	1	0	1	1
10	0	0	0	0	0	0	0	0	0	0	1	0	0	0	1	1	2	1	1	0	0	0	0	1	0
11	0	0	0	0	0	0	0	0	2	2	2	1	0	0	0	0	0	0	0	0	0	0	0	0	0
12	0	0	0	0	0	0	1	2	1	2	1	3	1	0	0	4	14	14	13	13	13	13	13	0	5
13	0	0	0	0	0	0	0	0	0	0	0	0	0	0	0	0	0	0	0	0	0	0	0	0	0
14	0	0	0	0	0	0	0	0	0	0	0	0	0	2	4	7	8	7	6	4	5	3	3	4	2
15	5	4	5	6	4	5	5	6	15	14	14	10	6	5	4	6	3	1	1	1	1	1	1	2	5
16	1	1	1	0	0	0	0	1	1	2	2	2	1	1	2	1	24	7	3	4	2	5	8	11	3
17	8	3	6	4	3	2	2	1	2	2	2	2	4	7	8	8	8	2	2	2	1	1	3	4	4
18	2	2	2	2	2	2	2	2	2	1	2	3	10	6	14	18	16	9	11	9	9	15	2	2	6
19	1	2	2	4	3	2	3	4	7	6	3	1	6	9	1	1	0	0	1	0	0	0	0	0	2
20	0	0	0	0	0	0	1	1	0	0	1	2	2	2	2	2	3	2	0	0	1	2	1	1	1
21	1	0	0	0	1	1	1	2	2	3	3	3	3	3	3	3	3	3	3	5	6	3	2	1	2
22	1	1	1	1	1	2	2	2	2	2	2	1	2	3	3	2	1	1	2	2	2	1	1	2	2
23	3	1	2	1	1	1	1	2	1	1	2	3	2	1	1	1	2	2	2	1	3	3	2	1	2
24	2	0	0	1	1	0	1	1	1	1	1	0	0	0	0	1	1	0	2	1	3	3	1	2	1
25	2	2	2	1	1	1	0	0	1	0	0	4	2	1	0	1	4	2	3	3	5	4	2	2	2
26	2	2	2	2	2	1	1	1	3	6	14	7	9	11	14	11	6	4	2	2	5	4	2	5	5
27	4	3	4	14	20	15	15	12	15	19	10	10	3	8	3	2	2	4	6	8	8	8	8	9	9
28	10	11	11	11	12	13	15	11	11	7	6	5	7	6	8	6	7	5	4	3	5	4	5	5	8
29	4	5	8	6	4	7	6	5	6	5	3	4	2	2	3	3	3	2	2	3	4	7	10	8	5
30	9	5	3	6	4	4	6	4	4	4	M	M	0	0	0	0	0	0	0	3	0	0	0	7	3

MONTHLY STATISTICS:

GEOM	ARITH-----PERCENTILES-----										RANGE-----		STN GEOM	PERCENT	NO. OF TIMES	
MEAN	MEDIAN	MEAN	50	90	95	98	99	1-HR	24-HR	DEVIATION	VALID DATA	ABOVE	LIMIT	LEVEL		
3	2	3	2	7	11	14	15	0	-	24	0	-	9	2	97	0

- NOTES: 1. FLAGS FOR INVALID DATA :
- D: DYNAMIC CALIBRATION
 - T: TELEMETRY/DATALOGGR FAULT
 - M: MAINTENANCE OR ANALYZER FAULT
 - P: POWER FAILURE

THE HONGKONG ELECTRIC COMPANY, LTD.
AIR QUALITY DATA MONTHLY TIME SERIES REPORT
MONTH: SEPTEMBER

STATION : VICTORIA PEAK
POLLUTANT : NITROGEN DIOXIDE

YEAR : 2016
UNIT : MICROGRAMS/CUBIC METER

DAY	1	2	3	4	5	6	7	8	9	10	11	12	13	14	15	16	17	18	19	20	21	22	23	24	MEAN
1	P	P	P	P	P	P	P	P	P	P	P	P	P	P	P	P	20	17	15	14	16	20	14	16	
2	9	8	8	8	12	11	9	12	15	15	17	18	17	19	21	15	19	16	13	20	31	24	35	30	17
3	17	33	24	15	7	6	10	38	32	37	29	28	31	31	42	34	34	36	31	38	38	25	54	24	29
4	11	9	10	8	8	8	9	11	12	14	16	15	14	14	17	12	15	10	12	9	6	7	9	8	11
5	9	8	7	6	7	8	12	19	29	37	36	37	31	32	35	29	23	17	11	7	4	4	6	7	18
6	5	4	8	8	9	5	6	9	11	10	16	24	32	42	15	30	28	38	28	25	19	26	23	28	19
7	23	M	16	9	7	33	16	23	25	22	23	M	14	25	17	19	20	22	15	17	13	14	9	11	18
8	13	22	16	17	35	11	9	13	25	25	17	15	22	22	21	34	29	32	33	29	26	17	15	29	22
9	14	9	23	21	14	6	9	9	14	20	20	13	16	17	16	23	21	91	61	58	46	42	38	37	27
10	34	31	26	24	25	24	25	27	28	31	32	32	28	22	28	21	32	31	39	26	23	20	22	19	27
11	18	18	17	18	17	16	15	17	20	23	48	23	26	29	30	31	30	32	29	26	32	28	33	34	25
12	63	44	37	35	31	29	32	41	41	46	39	44	35	35	30	26	8	7	10	5	4	1	1	0	27
13	0	0	0	1	0	0	3	10	20	11	15	6	2	5	7	11	12	31	43	26	64	76	96	51	20
14	33	60	39	26	15	33	36	29	26	32	37	32	22	31	35	33	36	32	36	28	36	23	29	33	32
15	26	20	18	21	13	15	15	18	31	38	39	34	28	27	27	32	31	65	37	48	40	32	34	25	30
16	24	21	8	8	4	1	6	14	13	12	13	15	14	20	26	26	56	33	45	78	65	110	115	96	34
17	73	30	39	34	28	22	20	21	21	23	24	24	22	31	38	41	42	54	44	43	41	40	26	21	33
18	19	13	10	12	10	11	14	18	24	30	34	35	37	27	43	48	48	49	50	68	71	91	39	27	35
19	20	17	16	14	15	10	16	28	37	48	38	25	31	21	17	11	8	4	5	6	12	21	15	10	19
20	7	6	3	0	1	2	6	13	29	47	71	71	36	17	14	20	21	15	16	10	1	4	1	0	17
21	1	M	1	0	0	0	10	17	23	30	11	9	10	13	31	35	42	21	8	11	7	10	5	2	13
22	0	0	0	0	0	0	2	15	20	25	31	14	6	4	6	6	7	17	22	16	14	7	2	5	9
23	5	0	0	0	0	0	0	6	9	14	6	5	0	0	0	1	6	4	3	1	3	0	0	0	3
24	1	0	0	0	0	0	0	1	5	6	2	3	2	2	6	3	3	4	8	4	5	5	0	0	3
25	0	1	0	0	0	0	0	2	8	16	16	15	12	11	17	11	28	10	33	29	16	12	15	12	11
26	6	1	0	0	0	0	2	21	34	55	62	33	23	28	36	46	44	24	17	9	27	27	12	16	22
27	9	5	10	29	32	27	31	26	45	61	56	60	27	43	27	25	22	23	20	18	24	19	18	15	28
28	16	18	14	15	11	19	33	29	28	30	40	23	25	19	25	22	31	25	25	24	31	30	30	29	25
29	22	17	19	20	13	22	23	22	31	34	34	37	37	42	34	39	48	52	64	75	75	76	75	66	41
30	68	56	38	46	53	53	48	38	36	42	M	M	78	81	87	87	91	102	125	140	122	139	134	103	80

MONTHLY STATISTICS:

GEOM	ARITH-----PERCENTILES-----								-----RANGE-----				STN GEOM	PERCENT	NO. OF TIMES	
MEAN	MEDIAN	MEAN	50	90	95	98	99	1-HR	24-HR	DEVIATION	VALID DATA	ABOVE	LIMIT	LEVEL		
18	20	24	20	44	63	87	103	0	-	140	3	-	80	2	97	0

NOTES: 1. FLAGS FOR INVALID DATA :
D: DYNAMIC CALIBRATION
T: TELEMETRY/DATALOGGR FAULT
M: MAINTENANCE OR ANALYZER FAULT
P: POWER FAILURE

THE HONGKONG ELECTRIC COMPANY, LTD.
AIR QUALITY DATA MONTHLY TIME SERIES REPORT

STATION : CHUNG HOM KOK ZONE SUBSTATION
POLLUTANT : SULPHUR DIOXIDE

MONTH: SEPTEMBER

YEAR : 2016

UNIT : MICROGRAMS/CUBIC METER

DAY	1	2	3	4	5	6	7	8	9	10	11	12	13	14	15	16	17	18	19	20	21	22	23	24	MEAN
1	8	4	4	0	2	2	0	0	1	1	2	0	1	1	0	3	6	2	2	2	4	9	11	3	3
2	6	0	0	0	2	1	0	0	3	5	8	7	3	1	0	1	2	0	4	4	2	1	2	1	2
3	0	1	1	0	1	0	0	0	0	0	2	6	2	5	8	8	3	4	3	8	4	6	2	4	3
4	4	0	0	0	0	0	0	0	0	0	0	0	0	0	0	0	0	1	0	0	0	0	0	1	0
5	0	0	0	0	0	1	1	1	1	1	1	0	0	0	0	0	0	0	0	0	0	0	0	0	0
6	0	0	0	0	0	0	0	0	0	0	0	0	0	0	6	5	12	12	9	6	12	16	13	21	5
7	10	14	16	13	7	12	2	2	10	1	1	2	2	0	1	0	1	1	2	2	2	1	1	3	4
8	1	11	31	8	11	1	1	1	0	0	5	7	4	4	5	3	2	1	10	13	11	8	5	5	6
9	13	6	10	3	2	4	8	14	15	3	3	1	2	3	1	2	1	8	7	5	1	4	9	10	6
10	18	34	19	17	10	13	10	8	1	3	4	3	0	1	0	1	0	0	0	0	0	1	1	1	6
11	0	0	0	0	0	0	0	0	0	2	1	1	1	1	1	2	2	2	5	5	6	5	10	10	2
12	6	3	1	1	1	1	1	1	1	0	0	0	0	1	0	0	1	1	5	3	4	2	1	1	1
13	2	1	0	1	0	0	0	0	0	0	0	0	0	0	0	0	0	0	1	1	4	3	4	5	1
14	34	21	13	6	6	7	10	6	4	2	4	2	2	10	24	17	19	8	5	3	1	1	1	2	9
15	2	3	3	3	2	4	4	4	10	17	20	14	20	13	6	8	9	3	1	1	1	2	1	0	6
16	0	0	0	0	0	0	0	1	1	1	1	1	0	0	0	1	1	1	0	1	2	2	14	1	1
17	10	16	11	5	1	1	1	2	1	1	1	5	16	11	9	11	14	15	13	1	1	1	1	2	6
18	1	1	1	1	1	1	2	2	1	10	26	30	25	18	26	22	17	13	18	24	26	8	2	1	12
19	1	1	1	1	2	1	1	2	1	1	0	1	1	0	1	1	2	3	0	0	1	0	0	0	1
20	0	0	0	0	0	0	0	0	0	0	0	0	1	1	1	1	0	0	0	0	0	0	0	1	0
21	1	1	1	1	1	1	1	1	1	2	2	2	2	2	3	5	3	3	5	5	4	2	2	1	2
22	0	1	1	0	0	1	1	1	1	0	1	1	1	3	2	1	0	1	1	0	1	0	0	4	1
23	1	0	0	0	0	0	0	0	0	0	1	1	0	0	0	0	1	0	0	0	1	0	0	1	0
24	1	0	0	1	0	0	0	0	0	0	0	0	0	0	0	1	0	2	0	2	4	2	0	1	1
25	1	1	3	1	0	1	1	0	0	0	1	1	0	0	2	6	3	7	2	4	4	4	2	2	2
26	3	4	3	4	3	1	4	6	4	2	7	13	12	10	15	11	5	3	6	7	9	6	3	15	7
27	19	21	7	6	16	21	18	16	19	38	32	27	25	17	23	21	8	18	6	5	6	6	6	19	17
28	7	7	8	8	9	9	10	9	7	8	5	5	6	6	7	7	5	4	3	3	3	3	3	4	6
29	2	3	5	4	3	4	4	3	3	4	3	2	2	2	2	2	3	2	1	2	3	3	2	2	3
30	1	3	4	3	3	2	2	2	4	3	6	7	5	9	8	10	12	9	7	8	8	5	4	3	5

MONTHLY STATISTICS:

GEOM	ARITH-----PERCENTILES-----							-----RANGE-----				STN GEOM	PERCENT	NO. OF TIMES		
MEAN	MEDIAN	MEAN	50	90	95	98	99	1-HR		24-HR		DEVIATION	VALID DATA	ABOVE LIMIT LEVEL		
3	2	4	2	11	17	23	26	0	-	38	0	-	17	3	100	0

- NOTES: 1. FLAGS FOR INVALID DATA :
- D: DYNAMIC CALIBRATION
 - T: TELEMETRY/DATALOGGR FAULT
 - M: MAINTENANCE OR ANALYZER FAULT
 - P: POWER FAILURE

THE HONGKONG ELECTRIC COMPANY, LTD.
AIR QUALITY DATA MONTHLY TIME SERIES REPORT

STATION : CHUNG HOM KOK ZONE SUBSTATION
POLLUTANT : NITROGEN DIOXIDE

MONTH: SEPTEMBER

YEAR : 2016

UNIT : MICROGRAMS/CUBIC METER

DAY	1	2	3	4	5	6	7	8	9	10	11	12	13	14	15	16	17	18	19	20	21	22	23	24	MEAN
1	31	26	18	4	11	8	4	8	14	9	10	4	7	10	11	17	17	19	18	16	27	34	42	12	16
2	25	7	0	0	11	11	5	3	10	12	14	14	7	8	2	6	17	10	17	17	20	13	11	7	10
3	1	6	11	10	25	22	26	19	15	13	6	12	4	5	11	18	19	21	16	32	9	12	7	8	14
4	9	3	1	0	1	0	0	0	4	1	0	0	0	0	0	0	2	4	3	2	2	1	0	1	1
5	0	0	0	0	0	1	4	5	6	6	9	9	7	5	0	0	0	1	2	3	1	3	5	6	3
6	3	0	1	2	6	1	0	4	2	8	9	10	3	11	32	25	38	34	27	14	17	27	29	41	14
7	22	M	24	21	12	30	5	10	17	4	10	8	10	4	10	13	16	16	12	12	10	7	9	7	13
8	5	18	40	19	28	3	10	8	3	7	20	20	19	21	21	17	14	12	23	31	21	16	12	8	17
9	32	8	21	6	1	4	16	22	20	13	12	4	8	19	11	11	14	24	15	9	3	14	21	11	13
10	22	38	24	20	10	15	9	9	2	3	3	4	7	5	1	5	10	16	8	14	8	3	0	2	10
11	1	0	0	1	0	0	1	0	1	2	0	0	0	0	0	0	1	5	16	14	20	11	16	25	5
12	11	12	6	4	0	0	0	5	5	2	1	0	0	0	0	0	0	3	10	5	4	1	0	2	3
13	4	1	0	2	0	0	1	6	3	2	1	1	1	3	2	4	4	4	4	3	4	3	5	6	3
14	38	29	43	40	40	35	43	32	30	33	36	33	25	33	42	36	56	37	45	51	36	35	30	26	37
15	25	27	24	21	18	22	21	24	29	39	45	34	42	34	31	41	45	29	21	22	19	16	11	8	27
16	5	5	4	2	2	2	4	5	5	5	7	6	3	6	7	8	6	12	18	20	6	9	22	71	10
17	81	85	67	37	9	11	7	8	9	9	M	27	48	28	30	28	35	37	18	19	13	8	2	28	
18	1	0	0	0	0	3	8	10	10	23	49	42	51	34	37	31	34	32	41	29	21	31	5	5	21
19	4	3	2	2	4	4	8	11	11	7	4	2	3	1	1	1	3	5	0	0	1	1	1	0	3
20	0	0	0	0	0	0	1	11	27	22	13	6	3	0	0	2	1	1	0	1	3	1	0	0	4
21	0	M	0	0	0	0	0	0	1	0	0	0	0	1	0	4	4	3	7	6	2	0	0	0	1
22	0	0	0	0	0	0	0	1	0	0	2	1	1	2	1	2	3	0	1	0	1	0	0	2	1
23	0	0	0	0	0	0	0	2	0	0	1	0	0	0	0	1	2	1	1	0	2	1	0	0	0
24	0	0	0	0	0	0	0	0	0	0	0	0	0	0	0	1	0	3	2	3	5	2	0	0	1
25	0	0	0	0	0	0	0	0	0	0	2	1	0	1	3	7	8	18	5	2	1	0	0	0	2
26	0	0	0	0	0	0	1	7	15	7	9	19	19	15	16	19	20	12	11	18	20	10	6	18	10
27	19	25	12	5	24	39	37	41	53	87	107	93	71	51	53	56	49	71	41	30	29	37	30	51	46
28	33	22	19	15	14	16	28	33	31	32	26	23	22	19	23	23	26	26	19	23	24	26	26	28	24
29	22	17	18	21	13	20	26	29	31	36	38	42	47	53	44	39	56	60	67	78	89	93	84	74	46
30	67	64	60	46	49	52	50	44	47	48	52	58	62	74	79	86	102	113	117	129	116	95	58	26	71

MONTHLY STATISTICS:

GEOM	ARITH ----- PERCENTILES -----							RANGE -----				STN GEOM	PERCENT	NO. OF TIMES		
MEAN	MEDIAN	MEAN	50	90	95	98	99	1-HR		24-HR		DEVIATION	VALID DATA	ABOVE LIMIT LEVEL		
10	8	15	8	39	53	80	93	0	-	129	0	-	71	3	100	0

NOTES:

1. FLAGS FOR INVALID DATA :
 - D: DYNAMIC CALIBRATION
 - T: TELEMETRY/DATALOGGR FAULT
 - M: MAINTENANCE OR ANALYZER FAULT
 - P: POWER FAILURE

THE HONGKONG ELECTRIC COMPANY, LTD.
AIR QUALITY DATA MONTHLY TIME SERIES REPORT
MONTH: SEPTEMBER

STATION : VICTORIA ROAD SUBSTATION
POLLUTANT : SULPHUR DIOXIDE

YEAR : 2016
UNIT : MICROGRAMS/CUBIC METER

DAY	1	2	3	4	5	6	7	8	9	10	11	12	13	14	15	16	17	18	19	20	21	22	23	24	MEAN
1	1	1	1	1	1	1	1	2	1	2	2	1	1	1	1	1	2	2	2	1	2	2	2	3	1
2	1	1	1	1	1	2	2	2	3	2	4	3	4	2	1	1	1	1	1	2	3	3	5	3	2
3	2	1	1	1	0	0	2	4	3	3	2	2	2	2	3	3	2	2	1	1	1	1	1	2	2
4	2	2	2	1	1	1	1	1	1	1	1	1	1	1	1	1	1	1	1	1	1	1	1	0	1
5	0	0	0	0	1	1	0	0	1	1	1	1	1	1	1	1	1	1	0	0	0	0	0	1	1
6	0	1	1	1	1	1	1	1	1	1	2	5	7	9	63	138	113	73	55	42	29	23	20	16	25
7	13	11	8	7	5	5	4	4	4	4	3	3	2	2	2	2	2	2	2	2	2	2	2	2	4
8	2	2	1	1	1	2	2	1	2	2	2	2	5	2	6	2	2	3	2	2	2	2	2	3	2
9	3	2	2	2	2	2	2	2	3	2	2	1	1	1	2	2	1	2	2	3	2	3	3	3	2
10	3	3	3	2	2	2	2	2	2	2	2	7	5	3	2	2	3	4	3	2	1	1	1	2	3
11	1	2	14	8	6	4	3	2	2	1	1	1	2	4	6	4	5	6	7	3	5	5	4	3	4
12	3	2	4	4	2	2	3	7	3	5	6	6	2	1	1	1	1	1	2	1	1	1	1	1	3
13	1	1	1	1	1	1	1	1	1	1	1	1	1	1	1	1	1	1	1	1	1	1	2	2	1
14	3	4	4	4	3	6	6	4	3	4	4	2	5	4	6	4	6	5	5	3	3	2	3	4	4
15	4	4	4	3	2	5	4	5	5	6	7	5	4	4	3	4	3	2	2	1	1	1	1	1	3
16	1	1	1	1	1	1	1	1	1	1	1	1	1	2	2	6	8	3	2	3	2	3	4	3	2
17	3	7	19	12	10	4	2	2	2	2	1	2	5	3	4	4	5	7	5	7	2	1	1	2	5
18	2	2	2	2	2	2	2	2	2	4	2	3	2	6	9	6	5	7	5	5	5	4	3	2	4
19	3	2	2	2	2	2	2	2	2	2	2	1	8	2	1	1	1	1	1	1	1	0	1	1	2
20	0	0	0	1	1	0	0	1	1	1	1	1	1	1	1	1	2	1	1	1	1	1	1	1	1
21	1	1	1	1	1	1	1	1	2	1	2	2	2	1	2	2	2	2	1	2	1	2	1	1	1
22	1	1	1	1	1	1	1	1	1	1	1	1	1	2	1	1	1	1	1	1	1	1	1	1	1
23	1	1	1	1	1	0	0	1	1	1	1	1	1	1	1	1	1	1	1	1	1	1	1	1	1
24	1	1	1	1	1	1	1	1	1	1	1	1	1	1	1	1	1	1	1	1	1	1	1	1	1
25	0	0	0	1	1	1	1	0	0	0	0	1	1	2	1	3	2	2	1	1	1	1	1	2	1
26	2	2	2	2	2	2	2	3	6	5	4	3	5	6	7	4	4	2	3	3	2	2	2	1	3
27	2	2	2	2	4	4	5	7	10	11	7	8	6	6	4	4	2	3	2	4	3	3	3	3	4
28	4	5	5	5	5	5	6	5	6	4	4	3	4	3	4	3	3	3	2	3	4	3	3	3	4
29	2	3	3	3	3	3	4	3	3	3	2	3	2	2	2	2	2	2	2	3	2	2	2	4	3
30	5	4	3	4	3	2	3	4	3	4	4	4	4	5	6	6	8	6	6	7	6	6	7	8	5

MONTHLY STATISTICS:

GEOM	ARITH-----PERCENTILES-----							-----RANGE-----				STN GEOM	PERCENT	NO. OF TIMES		
MEAN	MEDIAN	MEAN	50	90	95	98	99	1-HR		24-HR		DEVIATION	VALID DATA	ABOVE LIMIT LEVEL		
2	2	3	2	5	7	11	22	0	-	138	1	-	25	2	100	0

- NOTES: 1. FLAGS FOR INVALID DATA :
- D: DYNAMIC CALIBRATION
 - T: TELEMETRY/DATALOGGR FAULT
 - M: MAINTENANCE OR ANALYZER FAULT
 - P: POWER FAILURE

THE HONGKONG ELECTRIC COMPANY, LTD.
AIR QUALITY DATA MONTHLY TIME SERIES REPORT
MONTH: SEPTEMBER

STATION : VICTORIA ROAD SUBSTATION
POLLUTANT : NITROGEN DIOXIDE

YEAR : 2016
UNIT : MICROGRAMS/CUBIC METER

DAY	1	2	3	4	5	6	7	8	9	10	11	12	13	14	15	16	17	18	19	20	21	22	23	24	MEAN
1	13	9	8	9	11	6	16	21	11	10	17	15	16	11	14	14	16	13	14	10	16	17	12	16	13
2	9	8	7	6	10	14	12	16	19	15	16	13	13	15	14	14	15	16	24	29	31	24	27	21	16
3	17	18	11	7	4	9	27	30	24	30	20	16	16	12	15	17	22	22	19	15	14	17	24	30	18
4	18	11	8	6	5	7	14	11	10	10	9	8	8	8	8	9	10	9	7	7	6	6	6	5	9
5	5	4	3	3	3	5	10	12	15	21	22	22	28	34	25	18	12	9	10	8	7	7	7	9	12
6	6	5	4	5	7	12	18	34	24	30	31	21	24	26	17	15	23	31	34	33	25	25	33	31	21
7	24	M	14	9	11	10	23	26	29	20	18	13	14	17	13	13	16	21	21	17	16	14	10	12	17
8	12	11	6	6	11	10	16	16	23	20	18	11	20	13	23	12	14	15	27	24	18	14	20	30	16
9	21	15	17	15	9	9	11	15	13	13	14	14	21	20	19	19	17	22	27	31	23	26	22	24	18
10	23	20	14	12	11	11	15	15	16	18	16	21	19	14	18	20	23	23	24	24	20	20	23	21	18
11	20	21	25	20	16	15	15	10	10	9	8	7	7	10	13	10	14	20	26	20	25	26	26	27	17
12	24	23	26	25	18	16	22	22	17	19	23	24	23	14	12	13	15	21	21	14	10	8	6	8	18
13	7	6	4	5	5	5	7	11	15	11	10	7	9	11	14	12	12	15	16	19	16	28	31	26	13
14	22	26	22	35	26	28	31	28	25	25	25	20	26	22	27	25	31	35	39	31	26	29	29	27	28
15	27	22	20	16	15	21	22	26	21	24	26	25	22	24	27	30	28	42	38	25	24	16	20	19	24
16	21	18	9	8	7	8	12	12	10	10	13	13	15	18	14	22	30	22	29	37	44	48	53	41	21
17	42	45	48	42	41	17	18	18	15	15	17	18	26	19	22	23	27	29	43	51	24	21	17	19	27
18	16	14	12	11	12	12	14	19	16	18	18	20	21	23	28	23	22	34	33	42	43	42	44	25	23
19	27	19	20	14	13	14	16	23	20	21	19	18	29	12	15	14	12	15	14	14	12	19	17	10	17
20	8	9	7	6	6	7	12	21	30	34	41	46	28	16	15	16	21	21	21	17	12	12	10	7	18
21	7	M	6	6	5	7	13	16	15	16	11	9	9	9	13	17	20	21	16	17	14	14	11	9	12
22	8	7	6	6	6	7	10	17	19	18	20	14	11	11	11	12	13	18	22	17	15	12	9	8	12
23	9	6	6	5	5	5	8	11	13	11	9	9	10	9	9	9	14	13	13	11	11	9	8	8	9
24	7	4	4	5	5	4	7	9	11	9	7	8	8	8	9	10	14	18	13	12	10	10	7	8	9
25	8	7	7	5	5	6	10	10	9	10	10	11	9	10	11	15	17	21	20	19	15	15	17	19	12
26	16	9	6	5	5	5	12	21	20	28	28	21	14	14	19	26	19	20	18	23	24	18	17	16	17
27	16	12	9	13	24	26	30	36	41	46	45	51	38	36	29	29	29	34	36	32	29	30	26	24	30
28	26	25	20	19	16	24	33	32	40	34	28	30	30	29	34	33	36	33	32	31	34	30	29	25	29
29	22	17	18	19	17	18	24	27	29	32	29	34	41	41	38	43	42	41	48	53	48	45	46	44	34
30	42	35	36	34	32	32	33	32	29	34	37	38	45	51	55	70	74	72	76	74	70	71	69	66	50

MONTHLY STATISTICS:

GEOM	ARITH-----PERCENTILES-----							-----RANGE-----					STN GEOM	PERCENT	NO. OF TIMES	
MEAN	MEDIAN	MEAN	50	90	95	98	99	1-HR	24-HR	DEVIATION	VALID DATA	ABOVE	LIMIT	LEVEL		
16	17	19	17	34	42	50	68	3	-	76	9	-	50	2	100	0

NOTES: 1. FLAGS FOR INVALID DATA :
D: DYNAMIC CALIBRATION
T: TELEMETRY/DATALOGGR FAULT
M: MAINTENANCE OR ANALYZER FAULT
P: POWER FAILURE

THE HONGKONG ELECTRIC COMPANY, LTD.
AIR QUALITY DATA MONTHLY TIME SERIES REPORT
MONTH: SEPTEMBER

STATION : POK FU LAM
POLLUTANT : SULPHUR DIOXIDE

YEAR : 2016
UNIT : MICROGRAMS/CUBIC METER

DAY	1	2	3	4	5	6	7	8	9	10	11	12	13	14	15	16	17	18	19	20	21	22	23	24	MEAN
1	2	1	1	1	3	1	0	1	0	3	1	1	3	0	0	1	3	3	3	2	3	4	3	6	2
2	3	1	2	2	4	7	5	3	4	4	8	11	7	3	0	0	1	0	0	1	4	7	13	6	4
3	3	4	0	0	0	0	5	10	4	4	4	5	6	10	12	9	10	9	3	3	2	3	2	4	5
4	5	3	1	0	0	0	1	0	0	0	0	0	0	0	0	0	0	1	0	0	0	0	0	0	0
5	0	0	0	0	0	1	1	3	2	1	1	0	0	0	0	0	0	0	0	0	0	0	0	0	0
6	0	0	0	0	0	4	2	3	0	0	3	1	1	4	2	2	3	15	8	8	2	6	15	19	4
7	11	9	5	2	3	2	0	0	5	4	1	6	0	2	1	1	3	2	3	5	3	1	0	3	3
8	1	1	0	0	0	1	0	0	3	2	1	0	16	8	18	4	9	3	3	4	3	4	2	10	4
9	7	5	7	3	2	2	2	1	5	4	5	0	1	1	0	1	0	1	4	3	3	3	5	9	3
10	9	10	6	4	4	5	4	5	4	4	6	2	0	1	0	0	4	10	12	5	2	0	11	6	5
11	41	54	68	44	2	3	3	1	7	8	0	0	2	2	12	9	13	19	22	10	8	10	7	2	14
12	1	1	0	7	4	1	0	1	8	4	5	19	26	12	10	1	0	0	0	2	2	2	0	0	4
13	0	0	0	0	0	0	0	0	0	0	0	0	0	0	0	0	0	0	0	0	1	1	3	8	1
14	13	19	15	16	10	24	14	6	6	10	8	2	10	13	28	18	20	14	13	4	4	4	3	6	12
15	8	10	10	6	5	12	9	11	22	23	26	17	18	17	8	13	7	2	1	1	0	1	1	2	10
16	1	0	0	0	0	0	0	0	0	1	3	2	3	1	7	30	40	4	4	5	5	6	21	26	7
17	12	20	32	35	27	7	1	2	2	2	3	7	15	9	10	21	18	23	22	26	8	0	0	2	13
18	2	2	1	1	1	1	1	2	5	2	4	17	6	10	28	19	21	15	20	12	11	12	1	1	8
19	4	2	3	3	2	1	1	3	4	4	2	1	23	5	3	1	0	0	0	0	0	0	0	0	3
20	0	0	0	0	0	0	0	0	0	0	0	2	2	1	1	7	7	6	6	5	5	5	5	5	2
21	5	5	5	5	6	6	6	6	7	7	8	7	7	7	8	7	8	8	7	8	10	8	7	2	7
22	1	1	1	1	1	2	2	2	2	2	2	2	3	3	3	2	1	1	2	2	2	1	1	2	2
23	3	1	2	1	1	0	1	1	1	1	1	2	2	1	1	0	1	1	1	1	1	2	1	1	1
24	1	1	0	1	1	0	1	1	1	1	1	0	0	0	0	1	1	0	1	1	2	3	2	1	1
25	2	2	2	2	1	1	1	0	1	0	10	6	4	4	1	7	10	5	5	4	4	3	4	8	4
26	8	4	3	3	3	2	1	2	11	34	21	15	11	15	19	19	10	12	7	17	20	10	6	5	11
27	11	12	8	15	23	23	25	34	37	M	26	34	24	27	16	7	5	9	7	13	8	9	7	8	17
28	12	12	12	14	13	15	17	13	15	9	7	8	9	7	10	8	8	7	5	4	9	5	5	5	10
29	4	5	8	7	6	6	8	7	6	6	4	5	3	4	4	5	6	3	3	7	4	4	7	10	6
30	12	7	8	8	4	5	8	9	6	10	8	7	7	10	15	15	16	13	15	20	14	13	18	16	11

MONTHLY STATISTICS:

GEOM	ARITH-----PERCENTILES-----								-----RANGE-----				STN GEOM	PERCENT	NO. OF TIMES	
MEAN	MEDIAN	MEAN	50	90	95	98	99	1-HR	24-HR	DEVIATION	VALID DATA	ABOVE	LIMIT	LEVEL		
4	3	6	3	15	20	27	34	0	-	68	0	-	17	3	100	0

NOTES: 1. FLAGS FOR INVALID DATA :
D: DYNAMIC CALIBRATION
T: TELEMETRY/DATALOGGR FAULT
M: MAINTENANCE OR ANALYZER FAULT
P: POWER FAILURE

THE HONGKONG ELECTRIC COMPANY, LTD.
AIR QUALITY DATA MONTHLY TIME SERIES REPORT
MONTH: SEPTEMBER

STATION : POK FU LAM
POLLUTANT : NITROGEN DIOXIDE

YEAR : 2016
UNIT : MICROGRAMS/CUBIC METER

DAY	1	2	3	4	5	6	7	8	9	10	11	12	13	14	15	16	17	18	19	20	21	22	23	24	MEAN
1	16	10	13	16	18	8	7	21	15	17	26	20	22	17	22	16	19	18	22	18	23	27	19	30	18
2	13	15	14	12	18	31	21	19	28	22	25	20	18	24	23	21	20	32	20	26	39	27	46	31	24
3	27	44	11	6	3	4	34	48	38	40	30	18	20	28	25	22	30	29	30	57	44	19	37	37	28
4	10	5	7	6	3	4	11	11	16	20	15	15	12	11	9	9	13	8	10	7	4	5	7	11	10
5	10	9	7	7	7	7	10	16	23	20	28	21	43	51	53	27	24	23	18	11	5	6	7	4	18
6	1	0	3	4	7	22	21	38	30	40	47	21	18	31	13	13	15	46	39	26	10	14	37	51	23
7	32	20	10	2	11	26	8	9	23	17	18	23	15	13	13	18	22	23	23	23	18	12	3	7	16
8	1	5	5	0	1	22	9	8	29	33	13	3	22	14	28	19	21	17	19	23	18	8	14	39	15
9	20	11	17	6	2	2	10	10	13	12	18	14	26	22	17	20	15	20	34	24	17	16	17	21	16
10	20	20	8	4	2	3	2	6	13	16	15	17	31	13	14	26	36	33	38	42	38	34	43	34	21
11	45	M	43	30	1	7	11	7	12	10	3	0	3	2	7	5	11	26	35	31	23	35	41	32	18
12	28	25	31	35	25	19	26	30	32	37	42	46	38	21	25	17	21	17	14	10	7	2	5	5	23
13	3	5	0	3	3	2	4	13	18	22	18	11	5	12	24	16	23	37	47	25	38	48	60	45	20
14	47	47	46	74	49	57	56	43	51	46	35	31	31	41	59	52	47	44	56	47	46	56	49	46	48
15	47	35	29	21	21	35	31	34	42	39	43	34	39	41	30	42	48	53	69	38	24	18	23	34	36
16	43	27	11	9	7	11	12	15	17	15	20	16	29	21	26	36	52	15	27	36	60	85	88	91	32
17	72	89	81	77	71	36	24	29	29	32	29	32	44	44	25	45	37	41	59	85	50	30	26	30	47
18	29	18	15	16	20	17	20	34	34	32	32	39	37	30	40	31	32	36	46	68	56	68	29	28	34
19	39	38	32	25	24	21	31	41	50	43	36	31	51	17	21	25	16	17	23	23	18	25	12	4	28
20	4	11	5	3	4	7	18	45	75	65	82	78	25	18	17	19	22	34	28	21	6	36	25	6	27
21	6	7	6	5	4	6	12	15	21	23	21	18	17	17	25	36	38	45	26	24	20	20	14	11	18
22	5	3	2	3	3	3	9	16	26	25	24	18	14	13	16	19	20	34	24	32	20	12	14	10	15
23	8	5	3	3	4	3	7	16	18	22	15	13	8	8	8	8	19	20	24	16	18	11	6	7	11
24	9	4	4	5	5	4	6	11	18	17	10	10	9	10	15	14	19	24	24	27	16	13	11	6	12
25	7	M	5	5	3	3	5	11	11	21	11	7	10	9	17	19	23	27	32	28	27	30	35	16	
26	30	5	2	0	0	0	5	12	37	65	56	33	15	18	18	25	20	26	15	29	43	23	24	8	21
27	14	8	3	25	51	50	58	62	73	M	82	103	57	64	47	29	34	47	57	49	60	61	52	47	49
28	59	42	28	29	24	34	45	40	50	40	34	35	32	27	33	33	35	35	36	32	41	36	35	34	36
29	29	22	24	26	22	26	36	39	40	41	39	47	61	59	53	59	56	57	73	88	80	79	77	77	50
30	68	56	60	56	56	56	54	48	41	50	54	62	73	84	88	98	104	116	124	124	117	120	118	113	81

MONTHLY STATISTICS:

GEOM	ARITH ----- PERCENTILES -----							----- RANGE -----				STN GEOM	PERCENT	NO. OF TIMES		
MEAN	MEDIAN	MEAN	50	90	95	98	99	1-HR	24-HR	DEVIATION	VALID DATA	ABOVE	LIMIT	LEVEL		
20	22	27	22	53	68	87	104	0	-	124	10	-	81	2	100	0

NOTES: 1. FLAGS FOR INVALID DATA :
D: DYNAMIC CALIBRATION
T: TELEMETRY/DATALOGGR FAULT
M: MAINTENANCE OR ANALYZER FAULT
P: POWER FAILURE

THE HONGKONG ELECTRIC COMPANY, LTD.
AIR QUALITY DATA MONTHLY TIME SERIES REPORT
MONTH: SEPTEMBER

STATION : AP LEI CHAU
POLLUTANT : SULPHUR DIOXIDE

YEAR : 2016
UNIT : MICROGRAMS/CUBIC METER

DAY	1	2	3	4	5	6	7	8	9	10	11	12	13	14	15	16	17	18	19	20	21	22	23	24	MEAN
1																									
2																									
3																									
4																									
5																									
6																									
7																									
8																									
9																									
10																									
11																									
12																									
13																									
14																									
15																									
16																									
17																									
18																									
19																									
20																									
21																									
22																									
23																									
24																									
25																									
26																									
27																									
28																									
29																									
30																									

AMBIENT AIR MONITORING AT AP LEI CHAU TEMPORARILY SUSPENDED

THE HONGKONG ELECTRIC COMPANY, LTD.
AIR QUALITY DATA MONTHLY TIME SERIES REPORT
MONTH: SEPTEMBER

STATION : AP LEI CHAU
POLLUTANT : NITROGEN DIOXIDE

YEAR : 2016
UNIT : MICROGRAMS/CUBIC METER

DAY	1	2	3	4	5	6	7	8	9	10	11	12	13	14	15	16	17	18	19	20	21	22	23	24	MEAN
1																									
2																									
3																									
4																									
5																									
6																									
7																									
8																									
9																									
10																									
11																									
12																									
13																									
14																									
15																									
16																									
17																									
18																									
19																									
20																									
21																									
22																									
23																									
24																									
25																									
26																									
27																									
28																									
29																									
30																									

AMBIENT AIR MONITORING AT AP LEI CHAU TEMPORARILY SUSPENDED

THE HONGKONG ELECTRIC COMPANY, LTD.
AIR QUALITY DATA MONTHLY TIME SERIES REPORT
MONTH: SEPTEMBER

STATION : CHEUNG CHAU
POLLUTANT : SULPHUR DIOXIDE

YEAR : 2016
UNIT : MICROGRAMS/CUBIC METER

DAY	1	2	3	4	5	6	7	8	9	10	11	12	13	14	15	16	17	18	19	20	21	22	23	24	MEAN
1	0	0	0	2	0	0	0	0	0	2	0	0	0	0	0	0	0	1	0	0	0	0	0	1	0
2	0	0	0	1	1	0	0	0	1	3	3	1	1	0	0	0	0	0	0	0	0	0	3	2	1
3	0	0	0	0	0	0	0	1	5	24	19	17	10	8	4	0	0	0	0	0	0	1	0	6	4
4	9	17	12	3	0	0	1	1	1	2	3	0	1	0	1	0	0	0	0	0	0	0	0	4	2
5	2	0	0	0	0	1	4	4	7	4	2	1	0	0	0	0	0	2	0	0	0	0	0	8	1
6	3	4	2	0	1	0	0	2	1	1	0	0	0	0	0	0	0	2	2	4	5	8	8	4	2
7	2	1	1	0	0	0	0	0	0	0	0	0	0	0	0	0	0	0	1	2	0	0	0	5	1
8	1	1	1	2	5	6	6	1	0	0	0	1	3	1	3	0	0	1	0	0	1	0	3	2	
9	1	0	0	0	0	0	1	1	2	0	0	0	0	0	0	0	0	0	0	1	0	1	4	0	
10	2	1	1	1	6	9	8	8	0	0	0	0	0	0	0	0	0	0	4	10	15	13	15	12	4
11	8	7	11	15	11	10	8	9	13	12	17	19	13	10	11	11	9	6	2	1	0	0	6	9	
12	5	3	4	8	6	4	4	4	10	10	5	8	6	3	5	7	8	10	11	6	2	2	1	4	6
13	2	2	2	0	2	2	4	0	0	2	1	1	0	0	0	0	3	3	1	3	8	8	8	11	3
14	4	3	2	3	4	6	11	6	4	5	11	8	11	12	7	5	5	6	7	3	2	2	4	9	6
15	7	7	8	5	7	4	4	8	10	7	9	7	6	7	8	7	7	5	4	1	3	4	5	6	6
16	4	0	0	0	0	0	0	1	1	2	1	1	0	1	4	1	6	15	10	5	5	4	5	10	3
17	9	8	7	7	9	8	8	7	8	4	1	2	4	3	5	5	7	11	4	5	3	2	0	3	5
18	1	1	0	1	0	1	2	3	3	3	1	0	1	2	1	3	3	9	6	5	6	5	8	8	3
19	3	2	0	0	0	0	0	2	1	0	0	1	1	4	0	0	0	0	0	0	0	1	3	3	1
20	0	0	0	0	0	0	0	0	0	0	0	1	3	2	1	2	2	1	0	0	0	0	2	1	
21	0	0	0	2	0	1	1	1	2	2	1	2	1	2	4	4	2	2	5	4	3	1	5	2	
22	0	0	1	2	3	2	0	0	1	2	1	2	7	5	5	9	2	2	5	4	1	0	2	4	3
23	3	4	6	2	2	3	3	1	1	0	1	M	0	0	0	0	0	0	0	0	0	0	0	0	1
24	0	0	0	0	0	0	0	0	0	0	0	0	0	0	0	0	0	0	0	0	0	0	0	0	0
25	0	0	0	0	0	0	0	0	0	0	0	0	0	0	1	1	2	0	0	0	2	1	0	1	0
26	0	0	0	0	0	0	0	0	3	0	0	4	1	10	0	0	0	0	0	0	0	0	0	0	1
27	0	0	0	0	0	3	28	39	33	51	40	27	28	16	14	0	0	0	0	3	3	2	9	21	13
28	32	38	15	18	5	1	0	0	0	0	0	0	0	0	0	0	0	0	0	0	0	0	0	0	5
29	0	0	0	0	0	0	0	1	1	0	0	0	0	0	0	0	0	0	0	0	0	0	0	0	0
30	0	0	0	0	0	0	0	0	0	3	0	0	0	0	0	0	0	0	0	0	0	0	0	4	0

MONTHLY STATISTICS:

GEOM	ARITH-----PERCENTILES-----								-----RANGE-----				STN GEOM	PERCENT	NO. OF TIMES	
MEAN	MEDIAN	MEAN	50	90	95	98	99	1-HR	24-HR	DEVIATION	VALID DATA	ABOVE	LIMIT	LEVEL		
3	1	3	1	8	11	17	28	0	-	51	0	-	13	3	100	0

NOTES: 1. FLAGS FOR INVALID DATA :
D: DYNAMIC CALIBRATION
T: TELEMETRY/DATALOGGR FAULT
M: MAINTENANCE OR ANALYZER FAULT
P: POWER FAILURE

THE HONGKONG ELECTRIC COMPANY, LTD.
AIR QUALITY DATA MONTHLY TIME SERIES REPORT
MONTH: SEPTEMBER

STATION : CHEUNG CHAU
POLLUTANT : NITROGEN DIOXIDE

YEAR : 2016
UNIT : MICROGRAMS/CUBIC METER

DAY	1	2	3	4	5	6	7	8	9	10	11	12	13	14	15	16	17	18	19	20	21	22	23	24	MEAN
1	5	4	3	23	1	0	0	5	17	22	4	0	7	4	4	1	2	10	3	3	3	8	7	8	6
2	14	1	3	20	13	7	8	16	22	19	15	4	5	0	0	1	1	6	1	11	13	8	41	4	10
3	0	2	12	0	4	33	63	52	40	41	30	23	12	13	4	1	1	1	19	39	60	97	52	78	28
4	74	104	87	11	5	4	8	10	15	31	6	1	7	3	2	2	1	1	2	2	0	3	17	17	17
5	25	5	4	4	2	24	56	50	64	51	55	58	54	48	42	63	15	17	5	2	0	1	4	34	28
6	13	23	50	39	52	34	31	23	28	26	18	0	3	7	1	2	4	16	16	32	18	30	31	2	21
7	7	M	19	17	2	1	4	16	50	1	1	6	2	0	1	0	0	8	24	33	40	38	53	55	16
8	54	40	47	39	44	50	36	1	2	7	2	0	4	5	1	7	2	1	11	2	4	6	13	6	16
9	9	3	6	8	5	4	33	32	8	0	2	0	14	17	12	15	10	3	1	36	50	44	49	47	17
10	36	35	29	12	39	44	37	19	6	20	14	20	6	0	9	22	37	39	50	54	54	55	63	50	31
11	48	44	48	53	47	46	41	36	28	11	11	10	7	4	8	9	10	6	6	7	10	39	43	51	26
12	55	46	47	58	49	47	49	31	31	31	38	36	12	3	6	6	6	15	19	13	2	0	1	0	25
13	2	4	2	4	13	36	45	7	6	18	4	2	0	0	0	0	9	9	6	5	16	8	7	10	9
14	24	19	16	19	15	30	59	41	41	43	49	49	52	41	25	21	21	23	41	56	41	42	43	50	36
15	50	55	45	38	40	34	37	30	27	29	38	40	37	23	40	54	55	45	96	57	94	82	90	51	49
16	57	24	16	20	22	20	22	18	17	28	24	25	20	25	11	3	4	27	28	15	9	54	73	72	26
17	78	95	92	97	92	72	59	43	33	35	27	29	34	29	36	11	18	23	29	89	57	46	29	18	49
18	16	12	10	12	13	25	35	33	29	38	41	38	21	11	6	10	12	26	31	19	78	87	121	72	33
19	40	25	19	17	15	14	24	25	22	28	35	30	27	11	1	1	0	1	1	3	13	55	77	31	21
20	23	24	6	4	3	13	12	19	29	45	44	55	48	46	21	3	7	16	8	10	5	19	24	43	22
21	37	M	24	34	24	34	49	40	31	44	21	6	7	4	1	4	3	4	4	14	10	5	5	1	18
22	0	0	2	7	12	7	2	9	12	28	41	21	14	7	10	18	6	8	13	13	8	5	10	2	11
23	4	10	19	7	6	7	11	5	10	7	5	M	1	1	0	0	0	4	0	2	3	5	4	0	5
24	2	1	12	7	22	15	16	16	9	4	9	0	0	6	0	0	0	2	14	4	4	3	3	1	6
25	2	6	2	6	5	4	10	12	8	26	5	2	1	5	21	17	17	7	8	15	19	13	6	5	9
26	7	4	3	4	4	3	4	11	15	16	12	8	18	17	25	3	3	2	4	6	3	6	1	24	8
27	11	11	27	28	21	82	100	112	88	115	115	115	81	61	53	30	50	51	82	70	82	82	97	110	70
28	126	106	71	78	43	31	23	20	22	24	26	35	20	16	27	25	22	19	34	27	44	33	38	27	39
29	23	27	31	34	40	28	40	51	57	53	60	62	72	70	66	68	76	90	95	89	86	80	71	77	60
30	82	85	83	77	69	69	64	66	61	66	66	73	83	89	105	113	115	118	133	124	117	119	129	127	93

MONTHLY STATISTICS:

GEOM	ARITH ----- PERCENTILES -----								----- RANGE -----				STN GEOM	PERCENT	NO. OF TIMES	
MEAN	MEDIAN	MEAN	50	90	95	98	99	1-HR	24-HR	DEVIATION	VALID DATA	ABOVE	LIMIT	LEVEL		
16	18	27	18	66	87	111	118	0	-	133	5	-	93	3	100	0

NOTES: 1. FLAGS FOR INVALID DATA :
D: DYNAMIC CALIBRATION
T: TELEMETRY/DATALOGGR FAULT
M: MAINTENANCE OR ANALYZER FAULT
P: POWER FAILURE

Appendix C Summary Results on Water Quality Monitoring

LAMMA POWER STATION FGD WASTEWATER TREATMENT PLANT EFFLUENT DISCHARGE TO ASH LAGOON SUSPENDED SOLIDS AND PH

Period : July – September 2016

Week Ending	No. of Samples	Suspended Solids, mg/L			pH		
		Maximum	Minimum	Average	Maximum	Minimum	Average
02/07/16	2*	15	13	14	8.0	8.0	8.0
09/07/16	4*	20	12	16	8.1	7.8	8.0
16/07/16	4*	18	11	14	8.2	8.0	8.1
23/07/16	3*	22	16	19	8.2	8.2	8.2
30/07/16	4*	17	14	16	8.2	8.0	8.1
06/08/16	6*	22	11	16	8.4	8.0	8.2
13/08/16	7	23	10	16	8.4	8.0	8.3
20/08/16	7	22	11	15	8.4	8.1	8.3
27/08/16	7	22	10	16	8.3	8.0	8.2
03/09/16	7	21	12	17	8.3	8.0	8.1
10/09/16	7	16	12	14	8.1	8.0	8.0
17/09/16	7	20	10	14	8.2	8.0	8.1
24/09/16	5*	16	10	14	8.3	8.1	8.2

Remark :

* - No sampling for the remaining day(s) of the week / no sampling due to no discharge

LAMMA POWER STATION
FGD WASTEWATER TREATMENT PLANT
EFFLUENT DISCHARGE TO ASH LAGOON
TRACE METAL, TOTAL PHOSPHORUS
AND TOTAL NITROGEN ANALYSIS

Period : July – September 2016

Sampling date		5/7/2016	9/8/2016	2/9/2016
Barium,	ug/L	<150	<150	<150
Mercury,	ug/L	<0.5	<0.5	<0.5
Cadmium,	ug/L	<1	<1	<1
Iron,	ug/L	<400	<400	<400
Total Phosphorous,	mg/L	<0.8	<0.8	<0.8
Total Nitrogen,	mg/L	25	64	95
Cyanide,	mg/L	<0.01	<0.01	0.01

Remark:

According to the WPCO Ash Lagoon Discharge Licence, contents at exact levels of trace metals below 1/10 th of the WPCO Licence permitted limits will not be reported. When the concentration of a metal exceeds 1/10 th of the limit, the exact value of the metal concentration will be reported.

Appendix D Summary of EMIS

EM&A Log Ref.	Mitigation Measures	Implementation Status
	GENERAL	
A1	No other process, except the Wet Limestone-Gypsum process used in the FGD plants of the coal-fired Units L6, L7 and L8 within the Lamma Power Station, shall be used in the FGD plants for the projects unless otherwise agreed by EPD.	Complied
	WATER QUALITY	
B1	All wastewater arising from the operation of the projects shall be collected and directed to the existing wastewater treatment plant within the Lamma Power Station for treatment.	Complied
B2	The operational plant effluent from the FGD plants should be reused as much as possible in order to minimise discharge to the WWTP.	Complied
B3	Maintenance of the WWTP should be performed regularly to ensure the effluent from the WWTP would not exceed the current requirements stipulated in the WPCO licence for Ash Lagoon.	Complied
	WASTE	
C1	No gypsum or sludge arising from the operation of the projects shall be disposed of anywhere. All gypsum and sludge shall be collected and reused.	Complied
	NOISE	
D1	Equipment including the Absorber Recirculation Pump, Oxidation Air Blower, Booster Fan and Booster Fan Motor of the FGD plants shall be acoustically insulated and the Gas-Gas Heater (untreated side) of the FGD plants shall be provided with reinforced lagging to reduce the noise impact.	Complied