

香港電燈有限公司  
The Hongkong Electric Co., Ltd.



**Lamma Power Station  
Units L2, L4 & L5 Flue Gas Desulphurization  
Plants Retrofit**

**Operational Phase**

**Quarterly Environmental Monitoring & Audit Report**

**October – December 2016**

香港電燈有限公司  
The Hongkong Electric Co., Ltd.

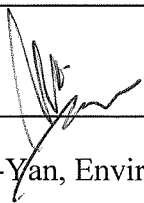


**ENVIRONMENTAL IMPACT ASSESSMENT (EIA) ORDINANCE, CAP. 499**

**ENVIRONMENTAL PERMITS NO. EP-248/2006 & EP-287/2007**

**LAMMA POWER STATION  
UNITS L2, L4 & L5 FLUE GAS DESULPHURIZATION PLANTS RETROFIT**

**ENVIRONMENTAL MONITORING & AUDIT PROGRAMME  
AT OPERATIONAL PHASE**

Report Title	Quarterly EM&A Report (October to December 2016)
Date	20 March 2017
Certified by	 (Mr. IP Tat-Yan, Environmental Team Leader)

## TABLE OF CONTENT

### EXECUTIVE SUMMARY

<b>1.</b>	<b>INTRODUCTION.....</b>	<b>1</b>
1.1	Background	1
1.2	Project Organisation	2
1.3	Plant Availability during the Reporting Period	2
1.4	Malfunction/Outage Records of Pollution Control Equipment	2
1.5	Summary of EM&A Requirements	3
<b>2.</b>	<b>AIR QUALITY.....</b>	<b>12</b>
2.1	Monitoring Requirements	12
2.2	Summary of Results and Observations	12
<b>3.</b>	<b>WATER QUALITY .....</b>	<b>13</b>
3.1	Monitoring Requirements	13
3.2	Summary of Results and Observations	13
<b>4.</b>	<b>ENVIRONMENTAL AUDIT .....</b>	<b>14</b>
4.1	Review of Environmental Monitoring Procedures	14
4.2	Assessment of Environmental Monitoring Results	14
4.3	Status of Environmental Licensing and Permitting	16
4.4	Implementation Status of Environmental Mitigation Measures	16
4.5	Implementation Status of Event/Action Plan	16
4.6	Implementation Status of Environmental Complaint Handling Procedures	16
<b>5.</b>	<b>FUTURE KEY ISSUES.....</b>	<b>18</b>
5.1	Outage Plan for the coming 3 months	18
5.2	Key issues for the coming 3 months	18
<b>6.</b>	<b>CONCLUSION .....</b>	<b>19</b>

### LIST OF TABLES

Table 2.1	Air Quality Monitoring Parameters and Frequency
Table 3.1	Water Quality Monitoring Parameters and Frequencies
Table 4.1	Summary of Action/Limit Level Exceedances on Monitoring Parameters
Table 4.2	Amount of Gypsum and Sludge Collected for Reuse by Contractor
Table 4.3	Summary of Environmental Licensing and Permit Status
Table 4.4	Environmental Complaints Received
Table 4.5	Outstanding Environmental Complaints Carried Over

## **LIST OF FIGURES**

- Figure 1.1a Location of New Facilities for L4 & L5 FGD Plant
- Figure 1.1b Location of New Facilities for L2 FGD Plant
- Figure 1.2a General Arrangement of L4 & L5 FGD Plant
- Figure 1.2b General Arrangement of L2 FGD Plant
- Figure 1.3 Schematic Diagram of L2, L4 & L5 FGD Plant
- Figure 1.4 Simplified Schematic Diagram of FGD Wastewater Treatment Plant
- Figure 1.5 Organization Chart at Operational Phase

## **APPENDIX**

- Appendix A Event/Action Plans in Response to Exceedance of AL Levels
- Appendix B Air Quality Monitoring Results
- Appendix C Summary Results on Water Quality Monitoring
- Appendix D Summary of EMIS

## EXECUTIVE SUMMARY

This is the quarterly Environmental Monitoring and Audit (EM&A) report for the Projects “Lamma Power Station Units L4 & L5 Flue Gas Desulphurization Plant Retrofit” and “Lamma Power Station Unit L2 Flue Gas Desulphurization Plant Retrofit” prepared by the Environmental Team (ET). This report presents the results of impact monitoring on air and water quality and environmental audit for the operation of the said projects in the period from October to December 2016.

Environmental monitoring for air quality and water quality were carried out for the purpose of this EM&A program as well as for fulfilling the requirements stipulated in the relevant licences. The results were checked against the established Action/Limit (AL) levels. The implementation status of the environmental mitigation measures, Event/Action Plan and environmental complaint handling procedures were also checked.

### Plant Availability

Units L2, L4 and L5 were out of service during the following period:

Unit	Period	Remark
L2	19/11/2016 13:17 to 20/11/2016 18:45	Defect rectification
L4	20/10/2016 00:01 to 30/12/2016 11:45	Unit overhaul
L5	15/10/2016 00:01 to 04/11/2016 18:13	Unit overhaul
L5	08/11/2016 19:35 to 09/11/2016 04:15	Defect rectification
L5	14/11/2016 19:44 to 15/11/2016 02:00	Defect rectification

### Malfunction/Outage Records of Pollution Control Equipment

Major outages of the Pollution Control Equipment during the reporting period are listed below:

Equipment	Period	Cause	Actions Taken
L5 FGD	11/10/2016 00:17 to 14/10/2016 19:55	Defect rectification	EPD was informed on 19/10/2016
L5 FGD	20/11/2016 03:16 to 03:40 & 21/11/2016 02:58 to 03:14	Outage of station electrical board	EPD was informed on 23/11/2016

Equipment	Period	Cause	Actions Taken
L2 FGD	05/12/2016 05:26 to 09/12/2016 17:03	GGH washing and defect rectification works	EPD was informed on 13/12/2016

For other minor outages, please refer to section 1.4 of the report.

### **Environmental Monitoring Works**

Environmental monitoring works were performed during the operation of Units L2, L4 and L5 FGD Plants in the reporting period.

#### *Air Quality*

No exceedance of Action and Limit levels for air quality were recorded in the reporting period.

#### *Water Quality*

No exceedance of Action and Limit levels for water quality were recorded in the reporting period.

### **Environmental Licensing and Permitting**

Description	Permit / Licence No.	Valid Period		Issued To	Date of Issuance
		From	To		
Environmental Permit for L4/5 FGD plants retrofit project	EP-248/2006	25/04/2006	-	HK Electric	25/04/2006
Environmental Permit for Unit L2 FGD plant retrofit project	EP-287/2007	02/10/2007	-	HK Electric	02/10/2007
Specified Process Licence issued under APCO	L-7-002(10)	01/01/2015	31/12/2016	HK Electric	23/12/2014
Specified Process Licence issued under APCO	L-7-002(11)	01/01/2017	31/12/2018	HK Electric	22/12/2016
WPCO discharge licence for Ash Lagoon	WT00011131-2011	15/12/2011	31/12/2016	HK Electric	15/12/2011

### **Implementation Status of Environmental Mitigation Measures**

Environmental mitigation measures were implemented in the reporting period.

### **Environmental Complaints**

There was no environmental complaint against the operation of Lamma Power Station during the reporting period.

### **Future key issues**

Key issues to be considered in the coming months include:

*Air Impact*

- To continuously carry out the air quality monitoring for Units L2, L4 and L5.

*Water Impact*

- To continuously carry out the water quality monitoring for FGD WWT plant.

**Concluding Remarks**

The environmental performance of the projects was generally satisfactory.

## 1. INTRODUCTION

The Environmental Team (hereinafter called the “ET”) was formed within The Hongkong Electric Co. Ltd (HK Electric) to undertake Environmental Monitoring and Audit for the “Operation of Lamma Power Station Units L4 & L5 Flue Gas Desulphurization Plant Retrofit Project” under the requirements of Clause 2.18 of Environmental Permit (EP) No. EP-248/2006 and “Operation of Lamma Power Station Unit L2 Flue Gas Desulphurization Plant Retrofit Project” under the requirements of Clause 2.10 of Environmental Permit (EP) No. EP-287/2007.

This report summarizes the environmental monitoring and audit work for the said Projects for the period from October to December 2016.

### 1.1 Background

The Projects involves retrofitting the three existing coal-fired generating Units L2, L4 and L5 of Lamma Power Station with Flue Gas Desulphurisation (FGD) plants for reducing sulphur dioxide emissions in support of Government policy to improve the air quality of the Pearl River Delta.

The Projects include the installation and operation of FGD plants with flue gas desulphurization efficiency of 90% for the three coal-fired Units L2, L4 & L5 to reduce the overall SO<sub>2</sub> emissions from Lamma Power Station. The process adopted for the FGD plants is “Wet Limestone-Gypsum”, a technology which has already been used in, and proved effective and reliable for the existing coal-fired units L6, L7 & L8. The flue gas from the boiler is directed to the FGD absorber inside which removal of SO<sub>2</sub> is take place by reaction with limestone slurry. After passing through the absorber, the treated flue gas is heated up by a gas-gas heater to over 80°C at boiler rated capacity and directed back to the existing chimney for discharge to the atmosphere. Figure 1.1a, Figure 1.1b, Figure 1.2a, Figure 1.2b and Figure 1.3 show the location and schematic of the FGD plants.

Wastewater filtrated from the reacted limestone slurry, i.e. gypsum slurry, is produced and it is directed to the existing FGD wastewater treatment plant (WWTP). The FGD WWTP is designed to treat the effluent from FGD plants by alkalization, precipitation and neutralization processes. The schematic diagram of the FGD WWTP is illustrated in Figure 1.4.

The additional equipment for the FGD Plants retrofit projects for Units L2, L4 and L5 includes:

- Three sets of FGD absorbers and associated ductworks
- Three sets of booster fans
- Three sets of gas-gas heaters
- Two FGD Switchgear and Equipment Buildings
- Gypsum dewatering system comprising two sets of hydrocyclones and belt filters

## 1.2 Project Organisation

The management structure to oversee the Projects includes the following:

- Environmental Protection Department (The Authority);
- General Manager (Corporate Development) (The official contact person between HK Electric and EPD);
- Environmental Team Leader (ET Leader);
- Environmental Team (ET).

The organization chart for the Operation EM&A programme is shown in Figure 1.5.

## 1.3 Plant Availability during the Reporting Period

Units L2, L4 and L5 were out of service during the following period:

Unit	Period	Remark
L2	19/11/2016 13:17 to 20/11/2016 18:45	Defect rectification
L4	20/10/2016 00:01 to 30/12/2016 11:45	Unit overhaul
L5	15/10/2016 00:01 to 04/11/2016 18:13	Unit overhaul
L5	08/11/2016 19:35 to 09/11/2016 04:15	Defect rectification
L5	14/11/2016 19:44 to 15/11/2016 02:00	Defect rectification

## 1.4 Malfunction/Outage Records of Pollution Control Equipment

Equipment	Period	Cause	Actions Taken
L5 FGD	01/10/2016 03:47 to 01/10/2016 4:00	Routine damper exercise	EPD was informed on 4/10/2016
L5 FGD	03/10/2016 23:22 to 04/10/2016 12:06	FGD was bypassed due to false BUF stalling alarm	EPD was informed on 5/10/2016
L5 FGD	06/10/2016 19:33 to 20:05 20:12 to 21:02 22:43 to 23:32	FGD was bypassed due to mal-operation of BUF stalling alarm	EPD was informed on 12/10/2016

Equipment	Period	Cause	Actions Taken
L5 FGD	07/10/2016 01:37 to 07/10/2016 02:56	FGD was bypassed for maintenance of BUF stalling alarm	EPD was informed on 12/10/2016
L5 FGD	11/10/2016 00:17 to 14/10/2016 19:55	Defect rectification	EPD was informed on 19/10/2016
L2 FGD	28/10/2016 03:10 to 28/10/2016 03:16	Routine damper exercise	EPD was informed on 2/11/2016
L5 FGD	20/11/2016 03:16 to 03:40 & 21/11/2016 02:58 to 03:14	Outage of station electrical board	EPD was informed on 23/11/2016
L5 FGD	27/11/2016 04:10 to 27/11/2016 04:34	Routine damper exercise	EPD was informed on 30/11/2016
L5 FGD	03/12/2016 04:24 to 03/12/2016 05:03	Routine damper exercise	EPD was informed on 5/12/2016
L2 FGD	05/12/2016 05:26 to 09/12/2016 17:03	GGH washing and defect rectification works	EPD was informed on 13/12/2016
L5 FGD	10/12/2016 01:14 to 10/12/2016 01:16	Routine damper exercise	EPD was informed on 12/12/2016
L5 FGD	17/12/2016 03:16 to 17/12/2016 03:22	Routine damper exercise	EPD was informed on 20/12/2016
L5 FGD	24/12/2016 02:29 to 24/12/2016 02:44	Routine damper exercise	EPD was informed on 29/12/2016

## 1.5 Summary of EM&A Requirements

Environmental Monitoring and Audit (EM&A) requirements have been discussed in the Environmental Impact Assessment (EIA) Report/ Project Profile for the Projects. The assessment results indicate that environmental monitoring works required for the EM&A programmes of these Projects are already in place or would be implemented under Lamma Power Station Extension Environmental Permit or environmental licenses for the operation of the existing Lamma Power Station. Such monitoring works are considered adequate for the Projects and no additional EM&A activities are required. Hence, environmental monitoring for air quality and water quality are carried out for the purpose of this EM&A program as well as for fulfilling the requirements stipulated in the relevant licences.

The EM&A monitoring work for air and water quality are described in Section 2 and Section 3 respectively.

The following environmental audits are summarized in Section 4 of the report:

- Environmental monitoring results;
- The status of environmental licensing and permits for the Projects;
- The implementation status of environmental protection and pollution control / mitigation measures.

The future key issues for the Projects will be reported in Section 5 of this report.

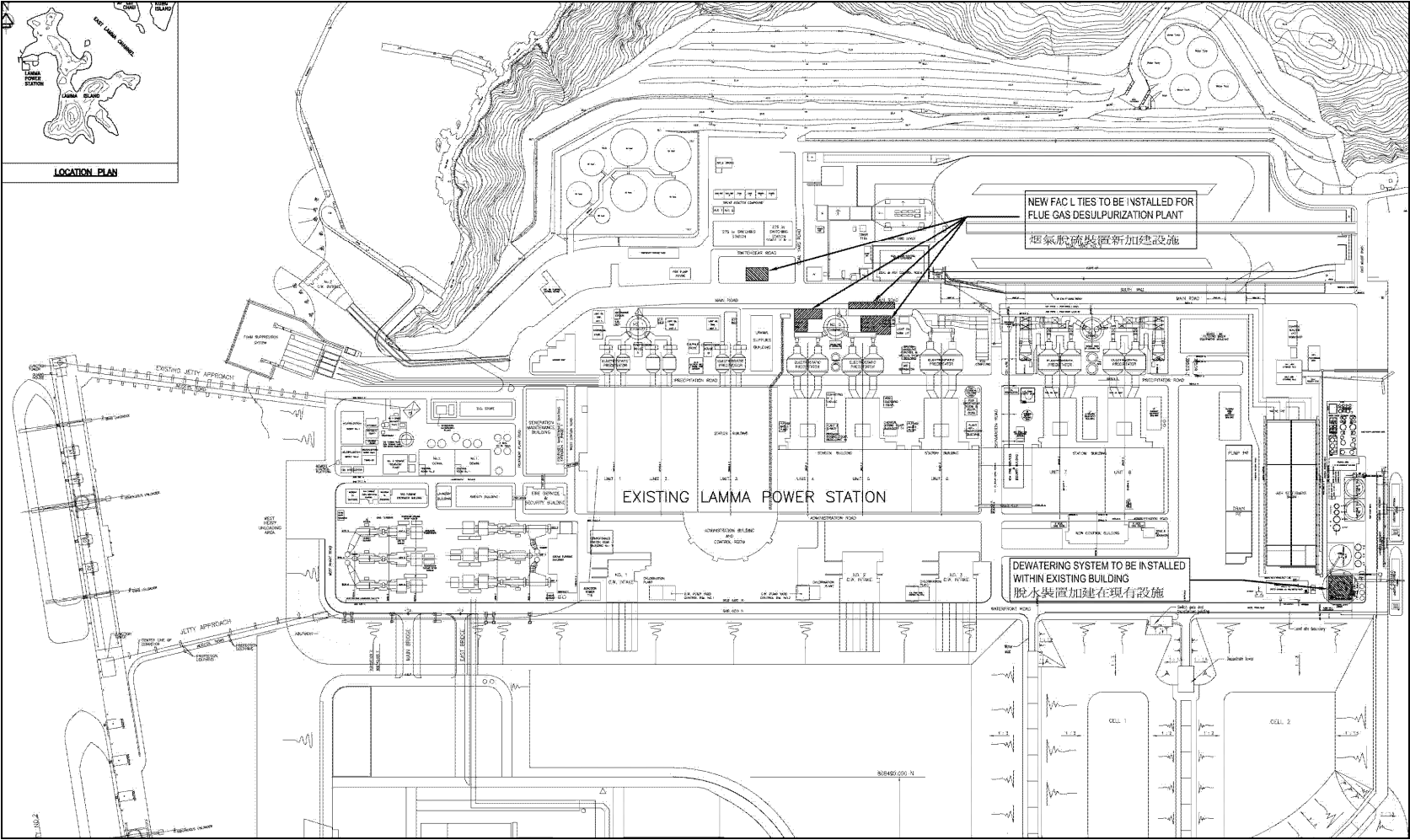


Figure 1.1a Location of New Facilities for L4 & L5 FGD Plants

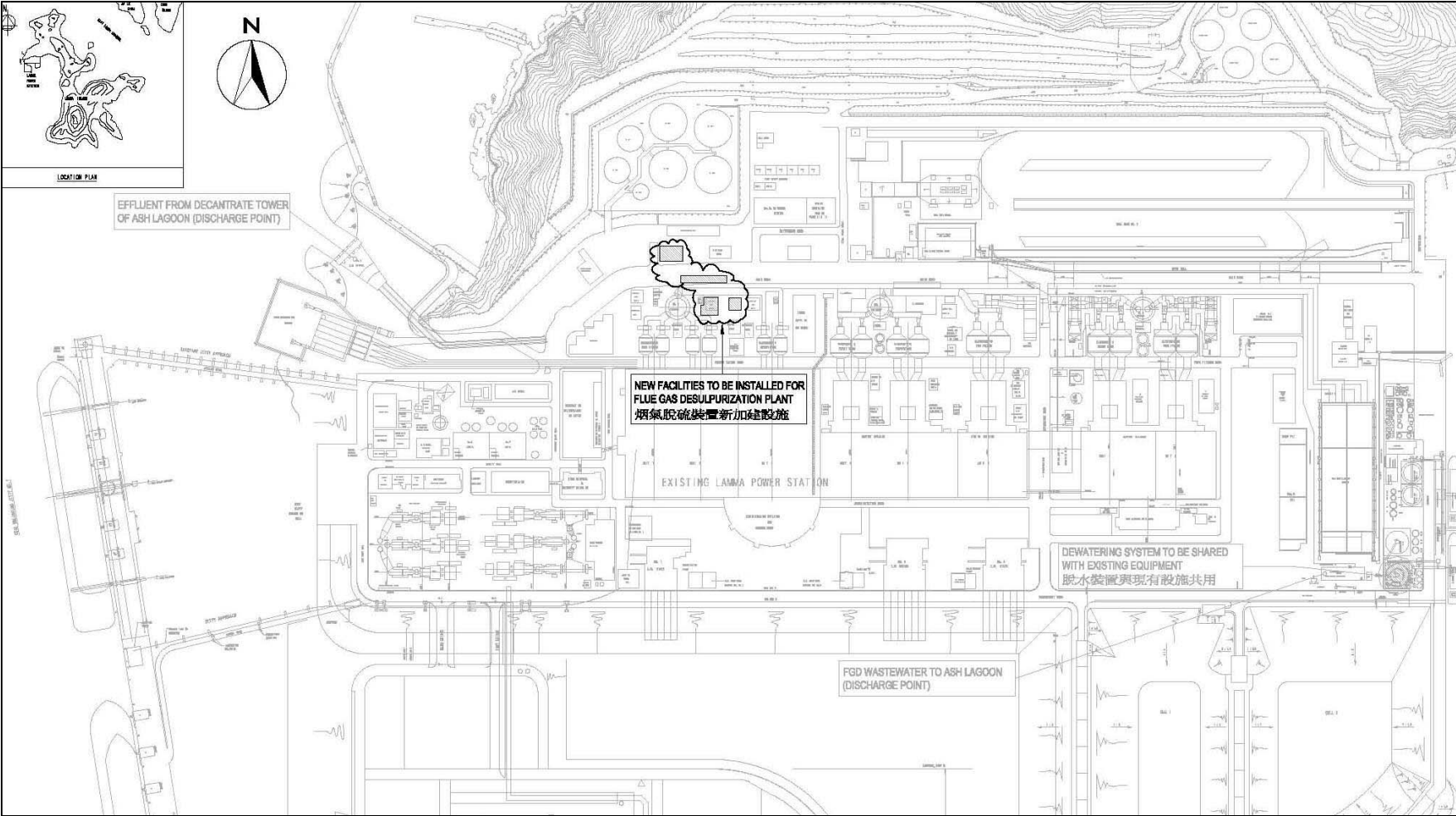


Figure 1.1b Location of New Facilities for L2 FGD Plant

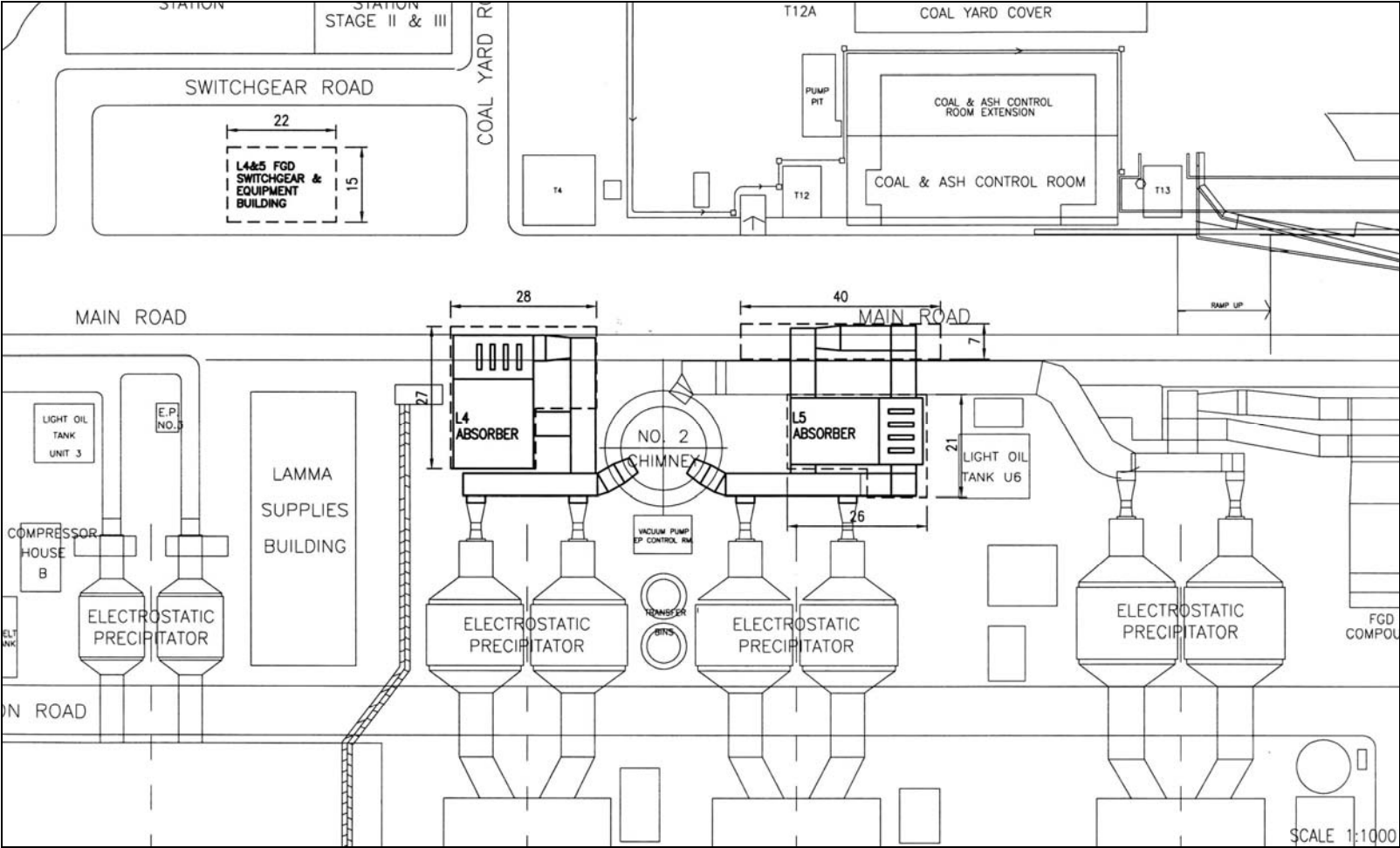


Figure 1.2a General Arrangement of L4 & L5 FGD Plants

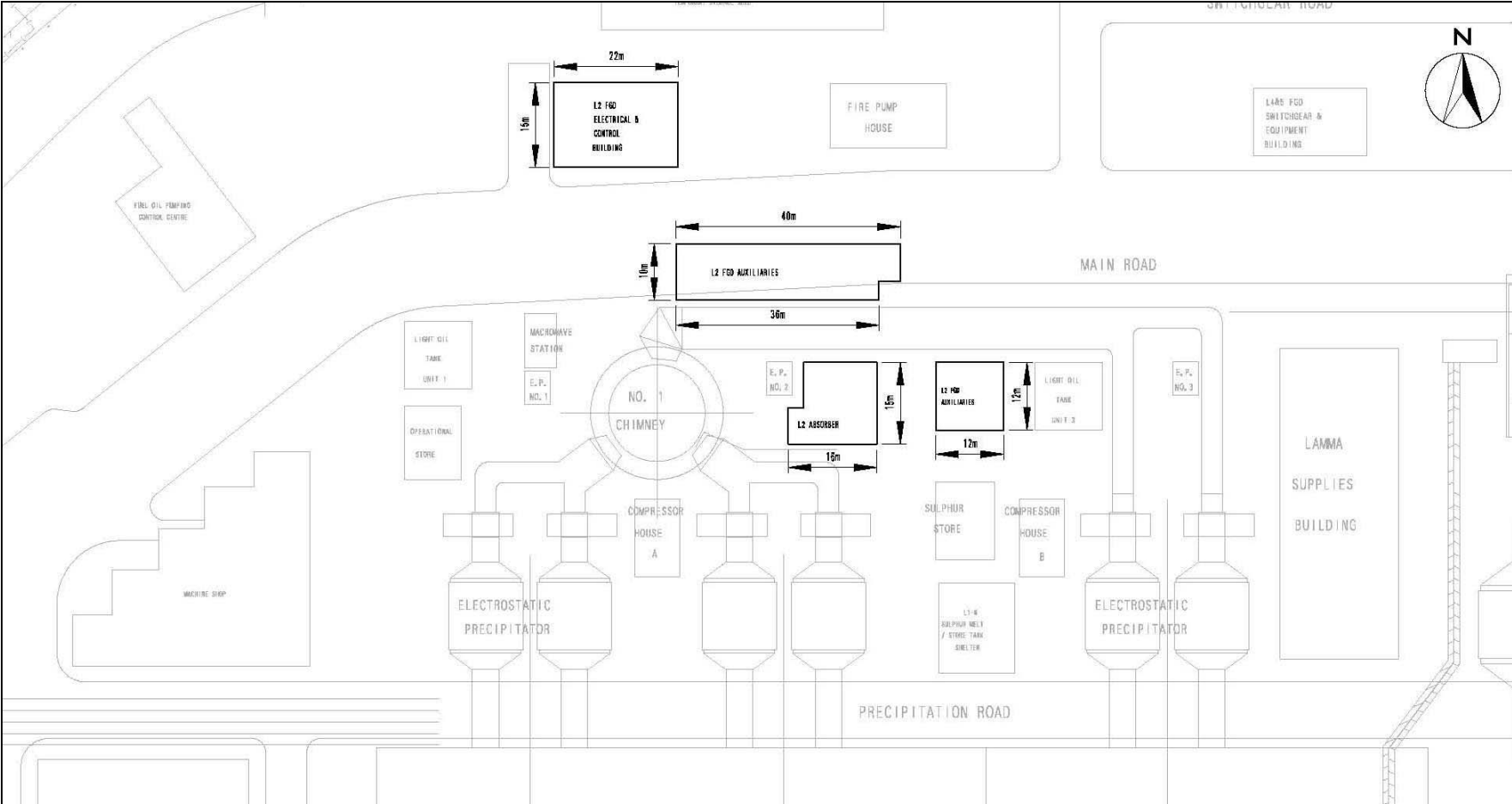


Figure 1.2b General Arrangement of L2 FGD Plant

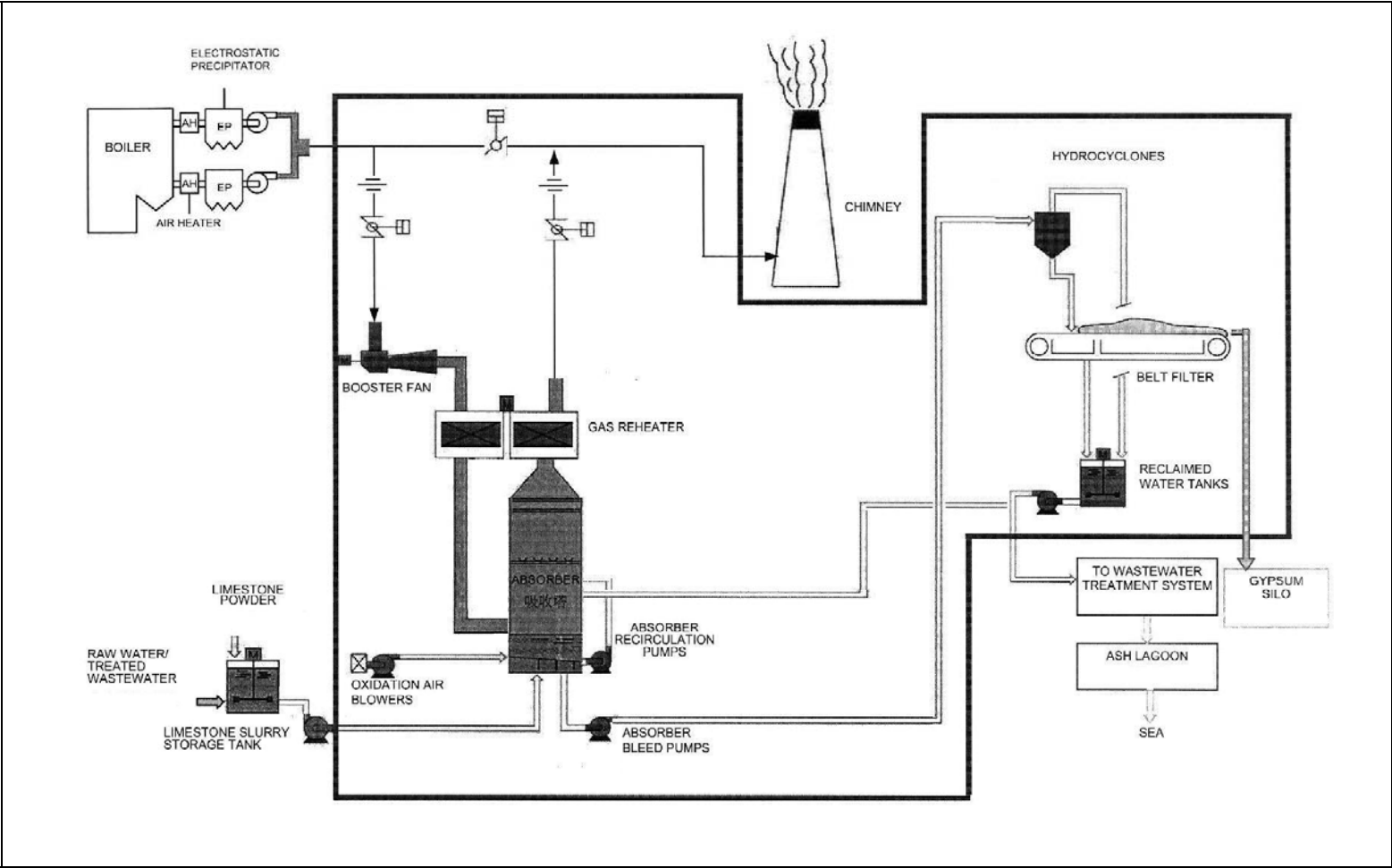


Figure 1.3 Schematic Diagram of the L2, L4 & L5 FGD Plant

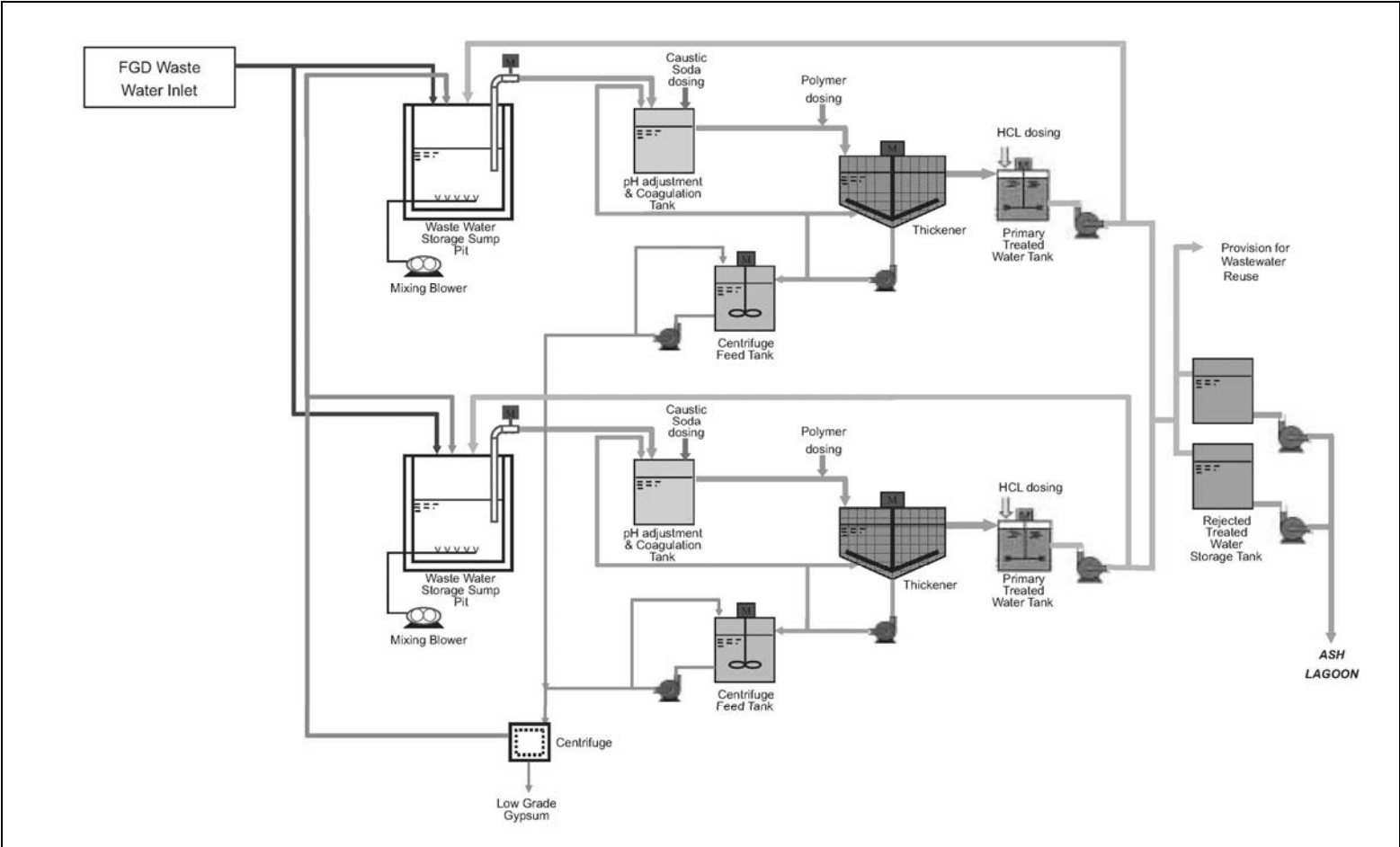


Figure 1.4 Simplified Schematic Diagram of FGD Wastewater Treatment Plant

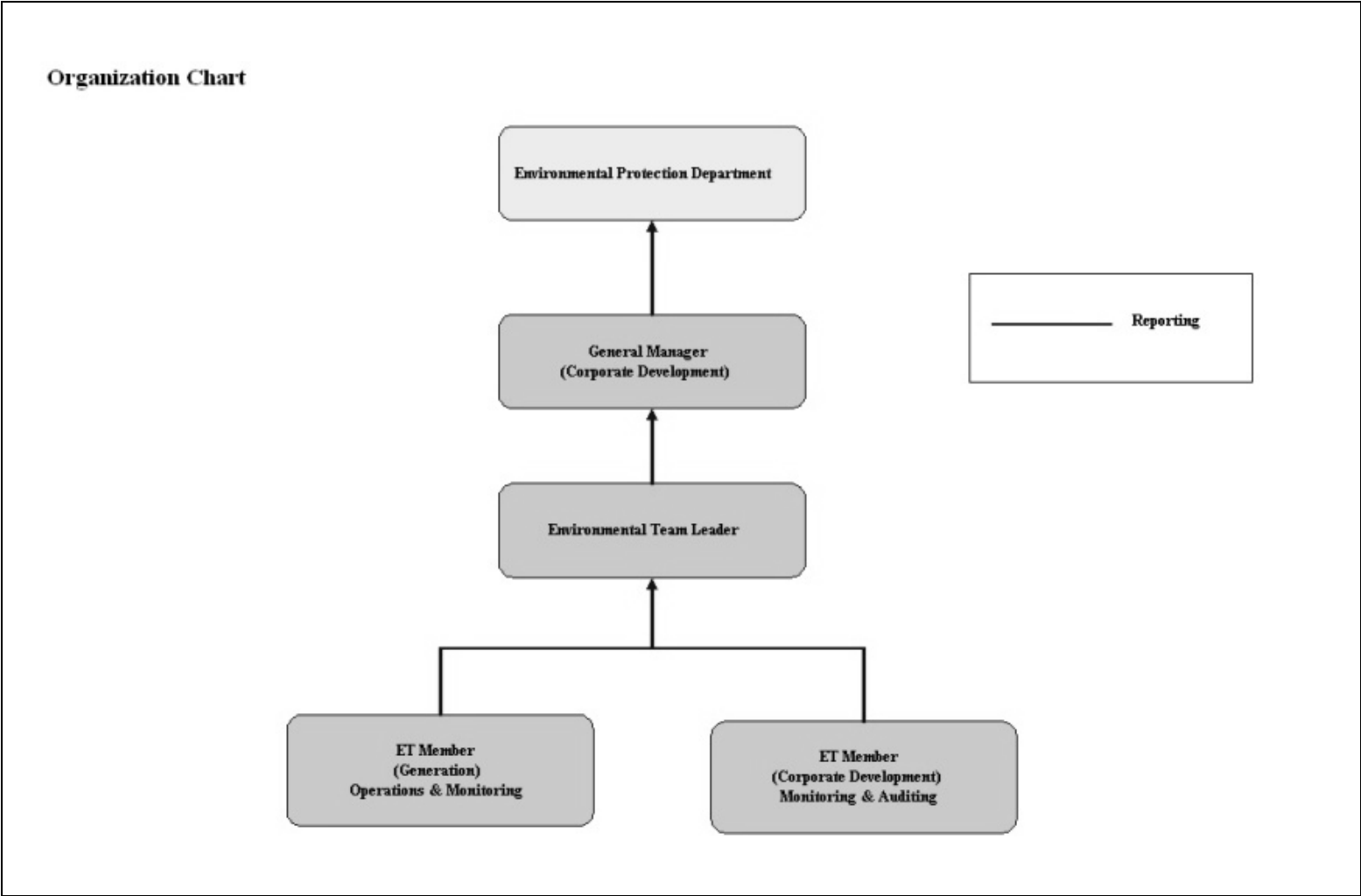


Figure 1.5 Organization Structure at Operational Phase of the Projects

## 2. AIR QUALITY

### 2.1 Monitoring Requirements

Since the Projects will bring a general air quality improvement, no additional EM&A activities are considered required, besides those already in place, such as those required by specified process licenses for the operation of the existing Lamma Power Station. In accordance with the requirements stipulated in the Specified Processes Licence issued under Air Pollution Control Ordinance, various operation parameters as stated in Table 2.1 were monitored and checked against the Action/Limit Levels shown in Appendix A.

Table 2.1 Air Quality Monitoring Parameters and Frequency

Sources of Emission	Parameter	Frequency
Steam boilers L2, L4 & L5	Particulate	Once / year
	Particulate (Opacity)	Continuous
	SO <sub>2</sub>	Continuous
	NO <sub>x</sub> expressed as NO <sub>2</sub> (For L4 and L5 only)	Continuous
Fugitive Dust (Coal, PFA, Limestone, gypsum)	Total Suspended Particulate	Once every six days
Chimney emissions	Ambient air	Continuous at existing ambient air monitoring stations
	SO <sub>2</sub>	
	NO <sub>2</sub>	

### 2.2 Summary of Results and Observations

Monitoring of various parameters as listed in Table 2.1 above was conducted during the operation of Units L2, L4 and L5 in the reporting period. Ambient air monitoring at Ap Lei Chau was temporary suspended since 1/6/2016 for the replacement of the aged shelter of the station. A summary of monitoring data is shown in Appendix B.

No Action/Limit Level exceedance was recorded in the reporting period.

### 3. WATER QUALITY

#### 3.1 Monitoring Requirements

According to the EIA Report/ Project Profile for the Projects, the current monitoring programme for the Lamma Power Station can cover the Projects and no additional EM&A measures are required besides those already in place. Hence, the EM&A work on water quality should strictly follow the relevant monitoring requirements stipulated in the discharge licence for Ash Lagoon issued under the Water Pollution Control Ordinance (WPCO).

Water quality monitoring was carried out for FGD Waste Water Treatment Plant (WWTP) in the reporting period. The parameters stated in Table 3.1 were monitored and checked against the Action/Limit Levels as given in Appendix A.

Table 3.1 Water Quality Monitoring Parameters and Frequencies

Item	Parameters	Frequencies
1	pH	Daily
2	Suspended Solids	Daily
3	Iron	Monthly
4	Barium	Monthly
5	Mercury	Monthly
6	Cadmium	Monthly
7	Cyanide	Monthly
8	Total Phosphorus	Monthly
9	Total Nitrogen	Monthly

#### 3.2 Summary of Results and Observations

Monitoring of various parameters as listed in Table 3.1 above was carried out during the discharge of the WWTP in the reporting period. A summary of the data is shown in Appendix C.

The data recorded for the monitoring parameters were all below their corresponding Action/Limit Levels. No Action/Limit level exceedance was recorded in the reporting period. The effluent quality was generally satisfactory.

## 4. ENVIRONMENTAL AUDIT

### 4.1 Review of Environmental Monitoring Procedures

The environmental monitoring procedures were regularly reviewed by the Environmental Team. No modification to the existing monitoring procedures was recommended.

### 4.2 Assessment of Environmental Monitoring Results

#### *Monitoring results for Air Quality and Water Quality*

The environmental monitoring results for air quality and water quality are presented in Sections 2 and 3 respectively are summarized in Table 4.1.

Table 4.1 Summary of Action/Limit Level Exceedances on Monitoring Parameters

Item	Parameter Monitored	Monitoring Period	No. of Exceedances In		Event/Action Plan Implementation Status and Results
			Action Level	Limit Level	
Air					
1	Annual analysis of dust particulate emission rates at chimney stacks.	01/10/16-31/12/16	N.A.	0	No PM sampling test was conducted in the reporting period.
2	Continuous monitoring of opacity, NO <sub>x</sub> , SO <sub>2</sub> and CO <sub>2</sub> in the flue gas at the chimney stacks	01/10/16-31/12/16	0	0	
3	TSP monitoring at Lamma Power Station Boundary (ie East Gate and Reservoir).	01/10/16-31/12/16	0	0	
4	Ambient SO <sub>2</sub> & NO <sub>x</sub> monitoring at the Peak, Queen Mary Hospital, Victoria Road, Chung Hom Kok, Ap Lei Chau and	01/10/16-31/12/16	0	0	

Item	Parameter Monitored	Monitoring Period	No. of Exceedances In		Event/Action Plan Implementation Status and Results
			Action Level	Limit Level	
	Cheung Chau.				
Water					
1	pH in WWTP Effluent	01/10/16-31/12/16	0	0	
2	Suspended Solids in WWTP Effluent	01/10/16-31/12/16	0	0	
3	Iron in WWTP Effluent	01/10/16-31/12/16	0	0	
4	Barium in WWTP Effluent	01/10/16-31/12/16	0	0	
5	Mercury in WWTP Effluent	01/10/16-31/12/16	0	0	
6	Cadmium in WWTP Effluent	01/10/16-31/12/16	0	0	
7	Cyanide in WWTP Effluent	01/10/16-31/12/16	0	0	
8	Total Phosphorus in WWTP Effluent	01/10/16-31/12/16	0	0	
9	Total Nitrogen in WWTP Effluent	01/10/16-31/12/16	0	0	

#### *Waste Management Records*

The quantity of FGD gypsum and sludge collected for reuse by contractor in the reporting period are shown in Table 4.2.

Table 4.2 Amount of Gypsum and Sludge Collected for Reuse by Contractor

Period	Amount of Gypsum Collected	Amount of Sludge Collected
October 2016	6,590.0 MT	0 MT
November 2016	3,501.1 MT	170.6 MT
December 2016	7,088.3 MT	0 MT

### 4.3 Status of Environmental Licensing and Permitting

All permits/licenses obtained as of December 2016 are summarised in Table 4.3.

Table 4.3 Summary of Environmental Licensing and Permit Status

Description	Permit / Licence No.	Valid Period		Status
		From	To	
Environmental Permit for Units L4/5 FGD Plants Retrofit	EP-248/2006	25/04/2006	-	Valid
Environmental Permit for Unit L2 FGD Plant Retrofit	EP-287/2007	02/10/2007	-	Valid
Specified Process Licence issued under APCO	L-7-002(10)	01/01/2015	31/12/2016	Valid
Specified Process Licence issued under APCO	L-7-002(11)	01/01/2017	31/12/2018	To be effective
WPCO discharge licence for Ash Lagoon	WT00011131-2011	15/12/2011	31/12/2016	Valid

### 4.4 Implementation Status of Environmental Mitigation Measures

Mitigation measures detailed in the EIA Report and EP are required to be implemented. A summary of the Environmental Mitigation Implementation Schedule (EMIS) is presented in Appendix D.

### 4.5 Implementation Status of Event/Action Plan

A list of specific actions in the event of exceedances of the various threshold levels for specific emission and discharge sources is given in Appendix A.

As no Action/Limit level exceedance was recorded, no action has been devised.

### 4.6 Implementation Status of Environmental Complaint Handling Procedures

During the reporting period, there was no environmental complaint against the operation of Lamma Power Station.

Table 4.4 Environmental Complaint(s) Received

Case Reference / Date, Time Received / Date, Time Concerned	Descriptions / Actions Taken	Conclusion / Status
Nil	N/A	N/A

Table 4.5 Outstanding Environmental Complaint(s) Carried Over

Case Reference / Date, Time Received / Date, Time Concerned	Descriptions / Actions Taken	Conclusion / Status
Nil	N/A	N/A

## 5. FUTURE KEY ISSUES

### 5.1 Outage Plan for the coming 3 months

Unit / Equipment	Period	Remark
L2	25/03/2017 to 24/04/2017	Unit Overhaul

### 5.2 Key issues for the coming 3 months

Key issues to be considered in the coming 3 months include:

#### *Air Impact*

- To continuously carry out the air quality monitoring for Units L2, L4 and L5.

#### *Water Impact*

- To continuously carry out the water quality monitoring for FGD Waste Water Treatment Plant.

## **6. CONCLUSION**

Environmental monitoring was performed as required in the reporting period from October to December 2016. All monitoring results were checked and reviewed.

No Action/Limit level exceedance on air quality parameters were recorded in the reporting period.

No Action/Limit level exceedance on water quality parameters were recorded in the reporting period.

Environmental mitigation measures recommended in the EIA Report and EP were implemented in the reporting period.

There was no environmental complaint against the operation of Lamma Power Station during the reporting period.

No prosecution was received for the Projects in the reporting period.

The environmental performance of the Projects was generally satisfactory.

## Appendix A Event/Action Plans in Response to Exceedance of AL Levels

### A.1 Air

Source of Emissions	Parameters to be Monitored	Frequency	Concentration Not to Be Exceeded	Action	Limit	Proposed Action
Steam boilers L2, L4 and L5	Particulate Particulate (Opacity) SO2 NOx expressed as NO2 (For L4 and L5 only)	once/year continuous continuous continuous	50 mg/Nm3 40% (bihourly) 200 mg/Nm3 (1h) 615 mg/Nm3 (1h)	- 35 190 585	50 40 200 615	ET Leader informs Generation Division at action level. Maintenance initiated. Temporary load shift until pollution control equipment repaired and reinstated. Report to EPD.
Fugitive dust (Coal, PFA, limestone, gypsum)	TSP	Once every six days.	260 (µg/m3) (24 hours)	-	260	Investigation of sources and additional dust suppression to be employed at Limit level. Frequency of monitoring to be increased as necessary.
Chimney emissions	Ambient air SO2  NO2	Continuous at existing ambient air monitoring stations	800 (µg/m3) (1h)  300 (µg/m3) (1h)	-  -	800  300	ET to review data on post-hoc basis and check for possible power station contribution.

## A.2 Water

Source of Discharges	Parameters to be Monitored	Frequency	Concentration Not to Be Exceeded	Action	Limit	Proposed Action
FGD Wastewater Treatment Plant	pH	Daily	6-9	-	6-9	If pH exceeds limit level, consideration to be given to adjust chemical dosing. ET Leader inform Generation Division and investigation be initiated to identify and remedy cause.
	Suspended Solids	Daily	30 mg/L	25	30	
	Iron	Monthly	4 mg/L	3.6	4	For all other parameters except pH, Generation Division to be informed, frequency of monitoring to be increased, and investigations to be initiated to identify cause and remedy if concentration exceeds action level. If problem persists to exceed the limit level, ET Leader verbally informs EPD and ensures remedial actions implemented.
	Barium	Monthly	1.5 mg/L	1.3	1.5	
	Mercury	Monthly	0.005 mg/L	0.0045	0.005	
	Cadmium	Monthly	0.005 mg/L	0.0045	0.005	
	Cyanide	Monthly	0.1 mg/L	0.09	0.1	
	Total Phosphorus	Monthly	8 mg/L	7.2	8	
	Total Nitrogen	Monthly	400 mg/L	360	400	

## Appendix B

### Air Quality Monitoring Results

#### B.1 Ambient Total Suspended Particulate Monitoring at Lamma Power Station

Date: Fourth Quarter of 2016 (October - December)

DATE	TSP CONCENTRATION ( $\mu\text{g}/\text{m}^3$ )		WEATHER INFORMATION (from Hong Kong Observatory)		
	Reservoir	East Gate	Mean Wind Speed (km/hr)	Prevailing Wind Dir. ( $^{\circ}$ )	Mean R.H. (%)
06/10/2016	48	47	19.3	010	75
12/10/2016	27	29	39.7	060	84
18/10/2016	15	25	57.5	060	96
24/10/2016	20	23	13.8	120	77
30/10/2016	(1)	51	32.3	020	74
02/11/2016	61	-	31.0	020	68
05/11/2016	57	58	13.4	100	77
11/11/2016	25	50	20.6	020	80
17/11/2016	64	69	26.7	070	78
23/11/2016	13	13	42.1	050	93
29/11/2016	72	88	27.0	020	66
05/12/2016	89	102	12.0	060	79
11/12/2016	61	63	42.8	080	76
17/12/2016	69	81	31.5	060	68
23/12/2016	47	25	25.7	030	73
29/12/2016	74	74	27.8	010	54

Note: (1) Breakdown of High Volume Air Sampler

	TSP ( $\mu\text{g}/\text{m}^3$ )
Action Level	-
Limit Level	260

Equipment used: Reservoir & East Gate : High Volume Air Sampler

## B.2 Unit L2, L4 and L5 Stack Monitoring at Lamma Power Station

### B.2.1 Monthly Summary of Stack NOx and SO2 for Unit L5

Date	Daily Maximum		
	SO2 concentration (mg/Nm3) #	NOx concentration (mg/Nm3) #	Opacity (%)
1/10/2016	23	374	24
2/10/2016	21	278	19
3/10/2016	21	293	20
4/10/2016	16	380	21
5/10/2016	19	436	21
6/10/2016	29	495	22
7/10/2016	22	447	20
8/10/2016	14	279	21
9/10/2016	23	337	18
10/10/2016	31	376	20
11/10/2016	FGD Plant Outage	241	21
12/10/2016	FGD Plant Outage	248	19
13/10/2016	FGD Plant Outage	264	19
14/10/2016	FGD Plant Outage	465	18
15/10/2016	*	*	*
16/10/2016	*	*	*
17/10/2016	*	*	*
18/10/2016	*	*	*
19/10/2016	*	*	*
20/10/2016	*	*	*
21/10/2016	*	*	*
22/10/2016	*	*	*
23/10/2016	*	*	*
24/10/2016	*	*	*
25/10/2016	*	*	*
26/10/2016	*	*	*
27/10/2016	*	*	*
28/10/2016	*	*	*
29/10/2016	*	*	*
30/10/2016	*	*	*
31/10/2016	*	*	*

Date	Daily Maximum		
	SO2 concentration (mg/Nm3) <sup>#</sup>	NOx concentration (mg/Nm3) <sup>#</sup>	Opacity (%)
1/11/2016	*	*	*
2/11/2016	*	*	*
3/11/2016	*	*	*
4/11/2016	56	488	11
5/11/2016	102	421	15
6/11/2016	49	410	16
7/11/2016	43	372	16
8/11/2016	40	362	17
9/11/2016	50	379	16
10/11/2016	72	468	11
11/11/2016	72	465	9
12/11/2016	81	486	8
13/11/2016	54	483	9
14/11/2016	58	436	12
15/11/2016	51	374	11
16/11/2016	47	422	11
17/11/2016	29	400	14
18/11/2016	32	442	11
19/11/2016	28	467	13
20/11/2016	26	487	11
21/11/2016	25	470	15
22/11/2016	30	447	15
23/11/2016	52	425	14
24/11/2016	59	446	12
25/11/2016	62	413	16
26/11/2016	45	477	14
27/11/2016	133	440	13
28/11/2016	26	495	14
29/11/2016	25	476	15
30/11/2016	24	480	15

Date	Daily Maximum		
	SO2 concentration (mg/Nm3) <sup>#</sup>	NOx concentration (mg/Nm3) <sup>#</sup>	Opacity (%)
1/12/2016	37	423	16
2/12/2016	28	450	16
3/12/2016	29	438	16
4/12/2016	22	363	10
5/12/2016	24	397	15
6/12/2016	23	420	16
7/12/2016	32	512	17
8/12/2016	29	480	16
9/12/2016	40	465	16
10/12/2016	29	520	20
11/12/2016	33	517	18
12/12/2016	22	480	20
13/12/2016	32	500	20
14/12/2016	37	452	21
15/12/2016	44	472	17
16/12/2016	47	487	15
17/12/2016	51	423	14
18/12/2016	47	467	14
19/12/2016	38	425	19
20/12/2016	42	458	21
21/12/2016	41	413	20
22/12/2016	44	431	21
23/12/2016	59	428	18
24/12/2016	74	393	21
25/12/2016	55	331	20
26/12/2016	72	470	16
27/12/2016	93	254	11
28/12/2016	105	290	11
29/12/2016	76	342	12
30/12/2016	57	343	12
31/12/2016	60	382	11

Note: # - Hourly average value. Expressed as at 0°C, 101.325kPa, dry and corrected to 12% CO<sub>2</sub> condition.

\* - Unit L5 was not on load.

### B.2.2 Monthly Summary of Stack NOx and SO2 for Unit L4

Date	Daily Maximum		
	SO2 concentration (mg/Nm3) #	NOx concentration (mg/Nm3) #	Opacity (%)
1/10/2016	61	352	27
2/10/2016	65	327	27
3/10/2016	43	382	27
4/10/2016	24	510	27
5/10/2016	56	480	32
6/10/2016	26	405	22
7/10/2016	21	397	24
8/10/2016	*	*	*
9/10/2016	*	*	*
10/10/2016	*	*	*
11/10/2016	25	255	20
12/10/2016	17	394	19
13/10/2016	15	380	20
14/10/2016	16	373	23
15/10/2016	39	411	21
16/10/2016	33	470	23
17/10/2016	53	415	27
18/10/2016	53	359	26
19/10/2016	66	453	27
20/10/2016	*	*	*
21/10/2016	*	*	*
22/10/2016	*	*	*
23/10/2016	*	*	*
24/10/2016	*	*	*
25/10/2016	*	*	*
26/10/2016	*	*	*
27/10/2016	*	*	*
28/10/2016	*	*	*
29/10/2016	*	*	*
30/10/2016	*	*	*
31/10/2016	*	*	*

Date	Daily Maximum		
	SO2 concentration (mg/Nm3) <sup>#</sup>	NOx concentration (mg/Nm3) <sup>#</sup>	Opacity (%)
1/11/2016	*	*	*
2/11/2016	*	*	*
3/11/2016	*	*	*
4/11/2016	*	*	*
5/11/2016	*	*	*
6/11/2016	*	*	*
7/11/2016	*	*	*
8/11/2016	*	*	*
9/11/2016	*	*	*
10/11/2016	*	*	*
11/11/2016	*	*	*
12/11/2016	*	*	*
13/11/2016	*	*	*
14/11/2016	*	*	*
15/11/2016	*	*	*
16/11/2016	*	*	*
17/11/2016	*	*	*
18/11/2016	*	*	*
19/11/2016	*	*	*
20/11/2016	*	*	*
21/11/2016	*	*	*
22/11/2016	*	*	*
23/11/2016	*	*	*
24/11/2016	*	*	*
25/11/2016	*	*	*
26/11/2016	*	*	*
27/11/2016	*	*	*
28/11/2016	*	*	*
29/11/2016	*	*	*
30/11/2016	*	*	*

Date	Daily Maximum		
	SO2 concentration (mg/Nm3) <sup>#</sup>	NOx concentration (mg/Nm3) <sup>#</sup>	Opacity (%)
1/12/2016	*	*	*
2/12/2016	*	*	*
3/12/2016	*	*	*
4/12/2016	*	*	*
5/12/2016	*	*	*
6/12/2016	*	*	*
7/12/2016	*	*	*
8/12/2016	*	*	*
9/12/2016	*	*	*
10/12/2016	*	*	*
11/12/2016	*	*	*
12/12/2016	*	*	*
13/12/2016	*	*	*
14/12/2016	*	*	*
15/12/2016	*	*	*
16/12/2016	*	*	*
17/12/2016	*	*	*
18/12/2016	*	*	*
19/12/2016	*	*	*
20/12/2016	*	*	*
21/12/2016	*	*	*
22/12/2016	*	*	*
23/12/2016	*	*	*
24/12/2016	*	*	*
25/12/2016	*	*	*
26/12/2016	*	*	*
27/12/2016	*	*	*
28/12/2016	*	*	*
29/12/2016	*	*	*
30/12/2016	26	387	13
31/12/2016	30	432	14

Note: # - Hourly average value. Expressed as at 0°C, 101.325kPa, dry and corrected to 12% CO<sub>2</sub> condition.

\* - Unit L4 was not on load.

### B.2.3 Monthly Summary of Stack SO<sub>2</sub> for Unit L2

Date	Daily Maximum	
	SO <sub>2</sub> concentration (mg/Nm <sup>3</sup> ) <sup>#</sup>	Opacity (%)
1/10/2016	*	*
2/10/2016	*	*
3/10/2016	139	11
4/10/2016	73	11
5/10/2016	*	*
6/10/2016	59	13
7/10/2016	*	*
8/10/2016	49	14
9/10/2016	*	*
10/10/2016	*	*
11/10/2016	*	*
12/10/2016	*	*
13/10/2016	*	*
14/10/2016	*	*
15/10/2016	47	14
16/10/2016	*	*
17/10/2016	119	11
18/10/2016	86	11
19/10/2016	106	11
20/10/2016	118	10
21/10/2016	97	11
22/10/2016	85	12
23/10/2016	112	13
24/10/2016	109	21
25/10/2016	110	12
26/10/2016	117	11
27/10/2016	101	13
28/10/2016	97	11
29/10/2016	90	11
30/10/2016	76	11
31/10/2016	75	14

Date	Daily Maximum	
	SO2 concentration (mg/Nm3) <sup>#</sup>	Opacity (%)
1/11/2016	80	12
2/11/2016	88	14
3/11/2016	83	11
4/11/2016	116	11
5/11/2016	*	*
6/11/2016	*	*
7/11/2016	57	11
8/11/2016	90	10
9/11/2016	*	*
10/11/2016	*	*
11/11/2016	105	15
12/11/2016	52	11
13/11/2016	78	11
14/11/2016	71	11
15/11/2016	82	11
16/11/2016	55	11
17/11/2016	68	11
18/11/2016	51	12
19/11/2016	45	13
20/11/2016	*	*
21/11/2016	42	12
22/11/2016	49	12
23/11/2016	*	*
24/11/2016	*	*
25/11/2016	*	*
26/11/2016	*	*
27/11/2016	*	*
28/11/2016	34	16
29/11/2016	35	12
30/11/2016	32	11

Date	Daily Maximum	
	SO2 concentration (mg/Nm3) <sup>#</sup>	Opacity (%)
1/12/2016	37	11
2/12/2016	56	11
3/12/2016	32	11
4/12/2016	*	*
5/12/2016	FGD Plant Outage	15
6/12/2016	FGD Plant Outage	17
7/12/2016	FGD Plant Outage	16
8/12/2016	FGD Plant Outage	15
9/12/2016	42	15
10/12/2016	41	15
11/12/2016	43	14
12/12/2016	41	14
13/12/2016	32	13
14/12/2016	42	13
15/12/2016	46	14
16/12/2016	52	15
17/12/2016	56	18
18/12/2016	50	14
19/12/2016	44	13
20/12/2016	50	12
21/12/2016	51	11
22/12/2016	50	14
23/12/2016	99	12
24/12/2016	*	*
25/12/2016	105	12
26/12/2016	118	12
27/12/2016	140	11
28/12/2016	109	11
29/12/2016	84	10
30/12/2016	*	*
31/12/2016	47	10

Note: # - Hourly average value. Expressed as at 0°C, 101.325kPa, dry and corrected to 12% CO<sub>2</sub> condition.

\* - Unit L2 was not on load.

### **B.3 Ambient SO<sub>2</sub> and NO<sub>2</sub> monitoring Data at Southern District and Cheung Chau**

THE HONGKONG ELECTRIC COMPANY, LTD.  
 AIR QUALITY DATA MONTHLY TIME SERIES REPORT  
 MONTH:OCTOBER

STATION : VICTORIA PEAK  
 POLLUTANT : SULPHUR DIOXIDE

YEAR : 2016  
 UNIT : MICROGRAMS/CUBIC METER

DAY	1	2	3	4	5	6	7	8	9	10	11	12	13	14	15	16	17	18	19	20	21	22	23	24	MEAN	
1	7	4	3	3	0	0	0	0	0	0	0	0	0	0	0	0	0	0	0	0	0	0	0	2	1	
2	2	0	0	1	0	0	1	3	2	1	0	0	1	3	5	5	8	2	3	2	0	0	0	0	2	
3	0	0	0	0	0	0	0	0	0	1	0	0	0	0	0	0	0	0	0	0	0	0	0	0	0	
4	0	0	0	0	0	0	0	0	0	0	0	0	0	0	0	0	0	0	0	0	1	0	0	0	0	
5	0	0	0	1	1	0	0	1	2	3	2	1	0	2	1	0	0	0	0	0	0	0	0	0	1	
6	0	0	0	0	0	0	0	0	2	0	0	0	0	0	0	6	7	4	1	0	0	0	0	0	1	
7	0	0	1	1	0	0	0	1	1	1	1	1	1	0	1	1	0	1	1	2	2	1	1	1	1	
8	1	2	2	3	3	3	2	2	2	3	4	2	2	1	1	2	2	2	1	3	1	0	0	5	2	
9	5	2	1	1	4	8	5	3	2	2	1	1	1	0	1	0	0	1	1	5	1	0	0	0	2	
10	0	1	0	0	0	0	1	1	1	1	2	2	1	1	1	1	1	2	2	3	2	1	0	1	1	
11	1	0	0	0	0	0	0	0	2	1	1	1	1	1	1	1	1	1	2	3	1	0	0	0	1	
12	0	0	0	0	0	0	0	0	0	0	0	0	0	0	0	0	0	0	0	1	0	0	0	0	0	
13	0	0	1	0	0	0	0	1	1	1	1	1	1	1	1	1	1	1	1	1	1	1	2	1	1	
14	1	2	2	2	3	3	2	2	2	2	1	1	1	0	1	1	2	3	0	1	1	1	1	1	2	
15	1	2	3	1	1	1	1	2	2	2	2	3	1	1	1	2	2	1	1	1	3	3	3	2	2	
16	1	1	1	1	1	1	1	2	4	2	2	1	2	1	1	1	1	2	2	2	2	2	2	2	2	
17	2	2	2	1	1	1	2	2	2	2	2	4	5	2	1	0	0	0	0	0	0	0	0	0	1	
18	0	0	0	0	0	0	0	0	0	0	0	0	0	0	0	0	0	0	0	0	0	0	0	0	0	
19	0	0	0	0	0	0	0	0	0	0	0	0	0	0	0	0	0	0	0	0	0	0	0	0	0	
20	0	0	0	0	1	0	0	0	1	1	1	1	1	4	3	6	6	3	3	2	2	2	4	4	2	
21	3	3	3	3	2	2	1	1	1	1	3	4	2	1	0	0	0	0	0	0	0	0	0	0	1	
22	0	0	0	0	0	0	0	0	1	1	1	1	2	1	0	1	1	2	2	3	4	0	0	1	1	
23	0	0	0	0	0	0	0	0	0	0	0	0	0	0	0	0	0	0	0	0	0	0	0	0	0	
24	0	0	0	0	0	0	0	0	0	0	0	0	0	0	0	0	0	0	0	0	0	0	0	0	0	
25	0	0	0	0	0	0	0	0	0	0	0	0	0	0	0	0	0	0	0	0	0	0	0	0	0	
26	0	1	0	1	0	0	0	0	0	0	1	0	0	0	0	1	1	0	1	1	1	1	1	1	0	0
27	0	0	1	0	0	0	0	0	0	0	1	6	15	4	0	0	1	4	1	1	0	0	0	0	1	
28	0	0	0	1	0	0	0	0	1	12	27	13	1	1	1	3	0	0	0	0	0	0	0	0	3	
29	0	3	4	7	3	2	2	2	5	3	1	0	0	0	0	0	0	0	0	5	1	1	1	0	2	
30	0	0	0	0	0	0	0	1	0	1	1	0	1	1	1	0	0	1	1	1	2	0	0	1	1	
31	0	1	2	2	1	1	2	3	3	4	3	3	2	4	7	5	12	5	2	4	5	2	2	2	3	

MONTHLY STATISTICS:

GEOM	ARITH-----PERCENTILES-----							-----RANGE-----					STN GEOM	PERCENT	NO. OF TIMES	
MEAN	MEDIAN	MEAN	50	90	95	98	99	1-HR		24-HR			DEVIATION	VALID DATA	ABOVE LIMIT LEVEL	
2	0	1	0	3	4	5	7	0	-	27	0	-	3	2	100	0

- NOTES: 1. FLAGS FOR INVALID DATA :
- D: DYNAMIC CALIBRATION
  - T: TELEMETRY/DATALOGGR FAULT
  - M: MAINTENANCE OR ANALYZER FAULT
  - P: POWER FAILURE

THE HONGKONG ELECTRIC COMPANY, LTD.  
AIR QUALITY DATA MONTHLY TIME SERIES REPORT  
MONTH:OCTOBER

STATION : VICTORIA PEAK  
POLLUTANT : NITROGEN DIOXIDE

YEAR : 2016  
UNIT : MICROGRAMS/CUBIC METER

DAY	1	2	3	4	5	6	7	8	9	10	11	12	13	14	15	16	17	18	19	20	21	22	23	24	MEAN
1	97	61	58	48	22	24	0	5	1	1	3	0	0	0	0	0	0	0	0	0	3	8	26	64	18
2	53	21	34	35	14	18	39	44	39	36	26	22	39	34	57	53	63	48	49	39	27	33	30	19	36
3	5	4	1	0	0	0	2	12	18	19	13	17	16	15	24	21	24	12	6	10	4	7	4	5	10
4	7	4	1	0	0	1	7	12	21	33	14	8	4	7	4	3	7	8	5	8	5	2	0	9	7
5	1	M	5	1	2	1	10	22	34	47	45	39	18	30	11	13	12	11	14	11	13	12	4	3	16
6	1	0	0	0	0	0	5	20	33	21	16	11	7	3	11	27	38	34	29	27	9	2	0	5	12
7	7	4	8	10	17	14	12	17	18	31	35	35	24	20	32	35	33	32	57	44	39	39	29	27	26
8	21	11	14	17	13	12	13	17	16	18	21	31	23	18	20	26	25	19	25	25	21	22	16	20	19
9	18	13	9	8	10	15	16	19	26	26	28	26	29	23	29	32	40	52	56	61	43	41	39	29	29
10	23	13	7	3	1	0	7	12	16	14	19	24	16	16	16	18	33	35	34	34	27	30	20	23	18
11	17	4	0	0	0	0	7	17	24	37	30	36	34	29	35	44	49	49	56	48	36	28	30	18	26
12	1	0	0	0	0	0	4	9	11	15	15	20	16	21	26	22	23	28	30	21	21	11	10	0	13
13	0	0	0	0	0	0	2	8	18	21	18	11	10	15	19	15	15	31	24	18	2	0	0	0	9
14	0	0	0	0	0	0	4	9	9	16	13	19	13	18	13	21	10	3	7	4	2	0	2	4	7
15	3	0	2	4	5	3	7	11	16	31	18	20	13	14	14	18	27	39	67	59	72	62	52	27	24
16	25	26	11	5	5	11	13	20	31	20	16	16	19	16	17	18	31	14	32	51	60	50	32	25	24
17	19	19	6	6	1	0	5	10	15	19	23	16	8	9	8	9	9	12	3	1	2	0	0	1	8
18	0	0	0	0	0	0	0	0	0	0	0	0	0	0	0	0	0	0	0	0	0	0	0	0	0
19	0	M	0	0	0	0	0	0	2	6	4	6	8	7	11	19	4	1	1	0	0	0	0	3	3
20	5	8	7	8	9	3	11	36	44	48	38	35	38	42	54	51	61	61	63	53	52	31	32	20	34
21	15	16	14	11	6	4	4	4	5	7	11	12	9	2	0	0	0	0	0	0	0	0	1	9	5
22	7	4	24	0	1	12	5	4	13	17	13	13	6	8	7	9	10	26	30	54	17	9	20	2	13
23	1	0	1	0	0	0	0	0	1	7	6	5	5	5	3	14	4	16	6	3	1	1	2	0	3
24	0	0	0	0	0	0	0	0	0	0	0	1	4	11	10	9	13	12	10	3	4	2	0	0	3
25	0	0	0	0	0	0	1	0	0	0	0	0	0	1	0	0	0	1	0	0	0	0	0	0	0
26	2	5	0	0	0	0	0	0	3	0	1	2	0	1	1	1	8	27	27	37	11	7	2	7	6
27	9	8	3	0	1	0	2	5	12	14	16	27	32	14	11	9	8	21	10	4	1	0	0	1	9
28	0	2	2	18	1	0	0	1	26	43	43	28	19	21	18	25	23	29	7	14	4	0	0	0	14
29	7	24	28	56	28	6	11	14	21	20	6	0	0	0	0	3	3	7	35	48	47	33	24	13	18
30	12	13	5	3	1	4	4	8	8	13	13	12	11	7	8	15	11	19	35	36	34	20	15	11	13
31	4	2	4	1	2	1	9	15	20	29	33	35	31	39	45	42	47	83	89	69	64	45	24	24	32

MONTHLY STATISTICS:

GEOM	ARITH-----PERCENTILES-----								-----RANGE-----				STN GEOM	PERCENT	NO. OF TIMES	
MEAN	MEDIAN	MEAN	50	90	95	98	99	1-HR	24-HR	DEVIATION	VALID DATA	ABOVE	LIMIT	LEVEL		
12	10	15	10	36	48	60	64	0	-	97	0	-	36	3	100	0

- NOTES: 1. FLAGS FOR INVALID DATA :  
D: DYNAMIC CALIBRATION  
T: TELEMETRY/DATALOGGR FAULT  
M: MAINTENANCE OR ANALYZER FAULT  
P: POWER FAILURE

THE HONGKONG ELECTRIC COMPANY, LTD.  
AIR QUALITY DATA MONTHLY TIME SERIES REPORT

STATION : CHUNG HOM KOK ZONE SUBSTATION  
POLLUTANT : SULPHUR DIOXIDE

MONTH:OCTOBER

YEAR :2016

UNIT :MICROGRAMS/CUBIC METER

DAY	1	2	3	4	5	6	7	8	9	10	11	12	13	14	15	16	17	18	19	20	21	22	23	24	MEAN	
1	2	2	1	1	0	0	0	1	0	1	2	1	0	0	0	1	1	1	1	1	1	1	1	0	1	
2	0	0	0	0	0	0	0	1	0	0	0	0	18	9	3	1	1	0	1	0	1	0	0	1	2	
3	1	1	1	0	0	0	0	1	0	0	0	1	0	0	0	0	0	1	1	1	1	1	1	1	1	
4	2	1	1	1	1	1	0	1	1	1	0	0	0	1	1	2	1	2	3	4	3	3	1	2	1	
5	1	2	2	3	3	3	3	3	2	11	30	27	12	1	1	2	1	1	3	2	2	1	1	1	5	
6	1	1	2	1	1	1	1	1	0	0	0	0	0	0	0	7	7	14	2	0	0	0	0	1	2	
7	0	0	0	0	0	0	0	2	1	0	0	0	0	0	0	0	0	0	1	1	0	0	0	1	0	
8	1	1	1	1	1	1	1	1	1	1	1	1	1	1	0	0	0	0	0	0	0	0	0	0	1	1
9	2	2	1	1	2	5	5	2	2	2	2	2	1	1	1	1	1	1	1	1	1	1	1	1	2	
10	1	1	2	1	1	1	1	1	1	1	1	2	2	2	5	2	2	2	2	2	2	1	1	1	2	
11	1	0	0	0	0	0	0	1	0	0	0	0	0	0	0	0	0	0	0	0	0	0	0	0	0	
12	0	0	0	0	0	0	0	0	0	0	0	1	0	0	0	0	0	0	1	1	1	0	1	0	0	
13	0	0	0	0	1	1	1	1	1	1	1	1	1	1	1	2	2	2	2	1	2	3	3	3	1	
14	2	2	2	2	2	3	2	2	2	2	1	1	1	1	2	2	4	1	1	1	2	2	1	2	2	
15	2	2	3	2	2	2	2	2	2	2	2	2	2	1	1	0	1	1	2	4	4	6	3	4	2	
16	3	2	2	2	2	2	2	2	2	2	2	2	2	2	2	2	2	3	2	3	3	3	4	2	2	
17	1	1	1	1	1	1	1	2	2	1	1	1	2	2	1	M	0	0	0	0	0	0	0	0	1	
18	0	0	0	0	0	0	0	0	0	0	0	0	0	0	0	0	0	0	0	0	0	0	0	0	0	
19	0	0	0	0	0	0	0	0	0	0	0	0	0	0	0	0	0	0	1	0	0	0	1	2	0	
20	2	2	3	3	3	2	2	2	2	2	10	7	7	8	7	10	14	11	7	5	4	2	5	4	5	
21	3	3	2	1	1	0	0	0	0	1	3	1	0	0	0	0	0	0	0	0	0	0	0	0	1	
22	0	0	0	0	0	1	3	5	7	9	7	13	8	9	12	7	10	10	10	15	10	6	6	6	6	
23	3	2	4	3	1	1	1	0	1	1	2	3	3	4	3	2	4	4	5	5	7	3	2	2	3	
24	3	1	1	0	0	1	0	1	1	3	2	3	4	4	2	4	1	2	4	2	2	2	3	3	2	
25	2	3	2	1	3	2	4	3	1	2	1	0	0	1	0	2	1	1	1	2	5	5	4	2	2	
26	2	3	5	2	2	2	2	1	1	1	1	1	1	0	0	0	0	1	1	1	3	1	5	2	2	
27	1	2	2	1	1	1	1	1	1	1	1	0	0	0	0	0	1	1	1	1	1	3	2	5	1	
28	2	1	1	2	2	2	3	1	2	4	1	1	1	1	1	1	1	2	0	4	9	6	7	3	2	
29	1	1	2	4	4	3	1	1	2	2	0	0	0	0	0	0	0	0	0	0	0	0	0	1	1	
30	1	1	1	1	1	1	2	1	1	2	1	1	1	1	1	1	1	1	1	1	2	1	1	2	1	
31	2	2	3	4	3	3	4	4	4	5	4	4	3	3	3	2	5	8	2	3	4	5	5	2	4	

MONTHLY STATISTICS:

GEOM	ARITH-----PERCENTILES-----							-----RANGE-----				STN GEOM	PERCENT	NO. OF TIMES		
MEAN	MEDIAN	MEAN	50	90	95	98	99	1-HR		24-HR		DEVIATION	VALID DATA	ABOVE LIMIT LEVEL		
2	1	2	1	4	6	10	12	0	-	30	0	-	6	2	100	0

- NOTES: 1. FLAGS FOR INVALID DATA :
- D: DYNAMIC CALIBRATION
  - T: TELEMETRY/DATALOGGR FAULT
  - M: MAINTENANCE OR ANALYZER FAULT
  - P: POWER FAILURE

THE HONGKONG ELECTRIC COMPANY, LTD.  
AIR QUALITY DATA MONTHLY TIME SERIES REPORT

STATION : CHUNG HOM KOK ZONE SUBSTATION  
POLLUTANT : NITROGEN DIOXIDE

MONTH:OCTOBER

YEAR :2016

UNIT :MICROGRAMS/CUBIC METER

DAY	1	2	3	4	5	6	7	8	9	10	11	12	13	14	15	16	17	18	19	20	21	22	23	24	MEAN
1	22	14	5	11	3	11	0	3	0	0	2	0	0	0	0	1	0	0	0	0	0	0	0	3	3
2	1	0	4	0	0	2	13	8	3	0	0	0	40	30	10	3	1	2	1	0	2	4	0	2	5
3	0	0	1	0	0	0	0	2	0	0	0	1	0	0	1	0	0	0	0	0	0	0	0	0	0
4	0	0	0	0	0	0	0	3	4	5	6	4	0	4	2	1	3	1	0	1	0	1	0	0	1
5	0	M	0	0	0	0	1	3	8	23	33	39	20	1	0	3	0	1	0	0	0	0	0	1	6
6	0	0	0	0	0	0	0	5	4	1	0	0	1	0	1	21	26	49	12	0	0	2	0	4	5
7	0	0	1	0	0	0	2	10	10	14	12	11	1	11	6	10	20	23	29	24	15	13	2	6	9
8	6	5	3	3	5	2	6	7	8	12	11	13	8	17	11	11	13	16	12	7	8	5	4	5	8
9	5	2	3	1	3	5	5	3	6	4	5	6	4	4	6	7	8	10	15	17	14	16	16	11	7
10	7	5	9	5	7	7	7	9	7	11	13	9	5	7	21	13	9	10	11	14	10	5	3	8	9
11	6	2	0	0	1	1	3	9	9	9	5	4	4	3	4	7	9	11	8	6	4	5	3	3	5
12	1	0	0	0	0	0	0	1	2	1	1	3	2	4	8	4	5	10	10	9	2	0	0	0	3
13	0	0	0	0	0	0	0	4	5	3	1	0	0	0	0	0	1	0	0	0	0	1	2	0	1
14	0	0	0	0	0	0	1	2	1	0	0	0	0	0	0	1	1	0	0	0	0	0	0	1	0
15	0	0	0	0	2	2	3	4	3	1	2	0	0	1	1	0	0	1	3	1	7	15	12	9	3
16	3	2	1	0	0	0	0	0	0	0	0	0	1	2	3	2	10	3	0	2	2	3	5	6	2
17	1	0	0	0	0	0	0	1	2	2	1	0	0	0	1	M	0	0	0	0	0	0	0	0	0
18	0	0	0	0	0	0	0	0	0	0	0	0	0	0	0	1	0	0	0	0	0	0	0	0	0
19	0	M	0	0	0	0	4	1	3	0	3	2	3	1	2	2	2	0	13	0	0	1	1	4	2
20	3	1	3	3	3	2	0	9	15	12	35	42	56	54	51	45	57	68	75	51	29	23	26	19	28
21	24	18	5	6	3	0	0	1	1	5	11	3	3	0	0	0	0	0	0	0	0	0	0	0	3
22	0	1	0	0	0	1	7	11	14	17	8	17	3	11	8	7	8	12	7	18	10	4	1	7	7
23	0	0	1	1	0	0	0	0	3	4	4	2	1	1	3	5	10	11	8	11	15	2	0	0	3
24	2	0	0	0	0	0	0	2	2	2	0	0	4	5	2	8	3	10	11	8	10	8	15	6	4
25	5	7	7	4	7	3	10	10	6	4	1	0	0	1	0	2	0	4	4	7	9	9	7	1	5
26	3	1	3	0	0	0	1	4	3	2	0	0	1	0	1	1	0	7	0	1	5	2	13	2	2
27	1	3	3	0	0	0	2	4	5	3	2	2	1	1	1	2	5	6	3	2	1	2	1	6	2
28	2	0	0	1	1	2	15	3	9	11	6	6	2	3	1	4	8	23	8	5	14	8	7	5	6
29	1	3	10	11	4	9	12	10	8	7	3	1	1	2	1	2	2	3	7	11	13	10	8	7	6
30	3	4	2	3	3	3	4	5	6	5	3	4	3	3	1	5	4	3	2	5	13	10	10	8	5
31	9	8	9	8	6	5	7	10	13	10	10	9	9	10	10	15	31	27	15	17	20	19	11	8	12

MONTHLY STATISTICS:

GEOM	ARITH-----PERCENTILES-----										RANGE-----		STN GEOM	PERCENT	NO. OF TIMES	
MEAN	MEDIAN	MEAN	50	90	95	98	99	1-HR	24-HR	DEVIATION	VALID DATA	ABOVE	LIMIT	LEVEL		
5	2	5	2	12	17	30	47	0	-	75	0	-	28	3	100	0

- NOTES: 1. FLAGS FOR INVALID DATA :
- D: DYNAMIC CALIBRATION
  - T: TELEMETRY/DATALOGGR FAULT
  - M: MAINTENANCE OR ANALYZER FAULT
  - P: POWER FAILURE

THE HONGKONG ELECTRIC COMPANY, LTD.  
AIR QUALITY DATA MONTHLY TIME SERIES REPORT  
MONTH:OCTOBER

STATION : VICTORIA ROAD SUBSTATION  
POLLUTANT : SULPHUR DIOXIDE

YEAR : 2016  
UNIT : MICROGRAMS/CUBIC METER

DAY	1	2	3	4	5	6	7	8	9	10	11	12	13	14	15	16	17	18	19	20	21	22	23	24	MEAN
1	7	7	6	5	4	2	2	2	2	2	1	1	1	1	1	1	1	1	1	1	1	3	2	4	2
2	4	2	4	4	4	4	5	5	4	6	6	7	7	6	6	8	4	2	2	4	2	1	1	1	4
3	1	1	1	1	1	0	0	1	1	1	1	1	1	0	0	0	0	1	0	1	1	1	1	1	1
4	0	0	0	1	1	0	0	0	1	1	1	1	0	0	0	1	1	1	1	1	1	1	0	1	1
5	1	1	1	2	3	2	2	3	3	5	9	7	8	7	3	2	2	1	1	1	1	1	1	1	3
6	1	1	1	1	1	1	0	1	1	1	1	1	1	2	2	4	3	3	2	1	1	1	1	0	1
7	0	0	0	1	1	1	1	1	1	2	2	1	1	1	1	1	3	2	1	1	1	1	1	1	1
8	1	2	1	2	2	2	2	1	2	2	2	2	2	2	1	1	1	1	1	1	1	1	1	2	2
9	2	1	1	2	2	3	1	2	2	2	1	2	2	1	1	1	1	1	1	1	1	1	1	1	1
10	1	1	1	1	1	1	1	1	1	1	1	1	2	3	2	2	2	1	1	1	1	1	1	1	1
11	1	1	1	0	0	0	0	0	0	0	1	1	1	1	1	1	1	1	1	1	1	1	0	1	1
12	1	0	1	1	0	1	1	1	1	0	1	1	1	1	1	1	1	1	1	1	1	1	0	1	1
13	0	1	1	1	1	1	1	1	1	1	1	1	1	1	1	1	1	1	1	1	1	1	1	1	1
14	1	1	1	1	1	1	1	1	1	1	1	1	1	1	1	1	1	1	1	1	1	1	1	1	1
15	1	1	1	1	1	1	1	1	1	2	1	2	1	1	1	1	1	2	3	3	3	2	2	1	1
16	1	1	1	1	1	1	1	1	1	1	1	1	1	1	1	1	1	1	1	1	1	1	1	1	1
17	1	1	1	1	1	1	1	1	1	1	1	1	1	2	1	1	1	1	1	1	0	1	0	1	1
18	1	1	1	1	2	1	1	1	1	2	2	1	1	2	2	1	2	2	2	1	1	1	1	1	1
19	1	0	1	1	0	0	0	0	1	1	1	1	1	1	1	1	1	1	1	1	1	1	1	1	1
20	1	1	1	1	1	1	1	2	3	3	5	3	4	4	4	5	5	3	4	3	3	3	4	2	3
21	2	2	2	2	2	2	1	1	1	1	2	2	2	1	1	1	1	1	1	0	0	0	0	1	1
22	0	0	1	1	1	0	0	0	0	1	1	1	2	2	3	3	2	2	2	3	3	1	1	3	1
23	2	1	1	2	1	1	1	1	2	3	2	2	3	3	2	2	1	1	1	1	1	2	1	1	2
24	0	0	0	0	0	1	5	11	4	2	1	1	1	1	1	1	1	1	1	1	1	1	1	1	2
25	1	1	1	0	1	1	1	1	1	0	1	0	0	1	0	1	1	0	0	0	0	1	1	1	1
26	1	1	1	1	1	1	1	1	1	1	1	1	1	1	1	1	1	1	1	1	1	1	1	1	1
27	0	0	1	0	0	0	1	4	5	2	3	7	4	2	1	1	1	1	1	1	0	0	1	1	2
28	1	1	1	1	7	14	9	7	16	14	16	4	3	3	2	3	3	2	1	1	1	1	1	1	5
29	1	1	1	2	2	2	1	1	2	2	1	1	1	1	1	1	T	T	T	T	T	T	T	T	T
30	T	T	T	T	T	T	T	T	T	T	T	T	T	T	T	T	T	T	T	T	T	T	T	T	T
31	T	T	T	T	T	T	T	T	T	T	T	1	7	7	M	1	2	1	1	0	0	0	0	0	2

MONTHLY STATISTICS:

GEOM	ARITH-----PERCENTILES-----							-----RANGE-----				STN GEOM	PERCENT	NO. OF TIMES		
MEAN	MEDIAN	MEAN	50	90	95	98	99	1-HR		24-HR		DEVIATION	VALID DATA	ABOVE LIMIT LEVEL		
1	1	2	1	3	4	7	8	0	-	16	1	-	5	2	94	0

NOTES: 1. FLAGS FOR INVALID DATA :  
D: DYNAMIC CALIBRATION  
T: TELEMETRY/DATALOGGR FAULT  
M: MAINTENANCE OR ANALYZER FAULT  
P: POWER FAILURE

THE HONGKONG ELECTRIC COMPANY, LTD.  
AIR QUALITY DATA MONTHLY TIME SERIES REPORT  
MONTH:OCTOBER

STATION : VICTORIA ROAD SUBSTATION  
POLLUTANT : NITROGEN DIOXIDE

YEAR : 2016  
UNIT : MICROGRAMS/CUBIC METER

DAY	1	2	3	4	5	6	7	8	9	10	11	12	13	14	15	16	17	18	19	20	21	22	23	24	MEAN
1	63	60	54	49	42	30	19	21	21	13	11	9	8	8	8	8	11	9	14	12	13	21	25	30	23
2	35	24	37	35	33	33	34	30	26	30	32	30	37	34	39	33	21	16	25	33	24	22	25	23	30
3	15	12	11	8	8	9	12	19	13	13	13	14	13	14	15	17	18	15	12	13	12	10	10	9	13
4	9	8	7	6	5	5	10	17	18	24	19	20	14	13	13	12	14	11	13	18	13	14	13	16	13
5	10	M	10	13	21	10	21	27	27	29	29	28	31	31	19	13	15	16	16	12	11	9	8	11	18
6	9	6	7	7	6	8	16	24	20	15	13	13	12	17	25	33	37	48	37	21	19	17	10	14	18
7	9	6	7	17	17	10	14	16	17	21	25	23	19	21	21	22	26	31	39	26	22	18	20	17	19
8	20	16	12	15	13	11	16	16	19	20	21	20	18	21	20	20	18	19	18	18	15	15	14	12	17
9	14	11	8	10	12	13	11	11	17	17	18	18	17	15	17	21	19	22	24	21	19	23	19	20	17
10	19	15	14	12	9	9	12	14	12	15	14	15	23	24	22	23	27	23	21	20	18	16	14	14	17
11	14	13	10	9	7	7	10	15	21	24	24	24	26	25	27	30	35	35	31	27	27	23	18	17	21
12	11	8	8	8	7	6	11	14	15	16	16	19	16	18	17	18	18	20	24	20	17	11	11	7	14
13	6	7	7	7	6	6	9	15	18	17	12	12	11	12	15	15	17	24	23	17	10	8	8	7	12
14	6	6	5	5	6	6	9	12	11	12	14	14	14	11	13	16	19	14	11	10	8	8	9	10	10
15	11	9	8	9	10	12	11	13	17	20	14	13	11	10	12	14	23	39	43	39	39	28	26	21	19
16	21	21	14	10	9	9	12	15	16	13	10	11	11	10	10	11	18	19	17	27	29	33	22	16	16
17	13	12	9	10	10	9	13	17	17	14	15	13	10	11	11	10	10	10	8	7	7	7	6	5	11
18	5	4	4	4	4	4	5	8	7	6	7	6	4	5	6	8	6	9	6	5	4	4	4	4	5
19	3	5	4	3	4	3	6	9	12	12	10	14	15	13	17	17	20	14	11	8	6	7	6	5	9
20	6	8	8	7	7	7	18	31	25	25	22	25	32	33	31	41	47	48	49	49	38	36	32	28	27
21	25	22	17	16	13	12	11	13	14	13	16	21	13	9	7	6	5	6	6	7	8	8	8	8	12
22	9	10	40	7	13	26	14	20	25	22	21	19	14	14	15	15	15	27	28	26	21	14	14	16	19
23	11	7	8	10	6	7	8	16	15	15	13	11	12	13	8	13	17	21	14	15	13	11	10	9	12
24	10	7	5	5	5	11	19	18	11	11	11	11	11	12	10	14	17	23	17	15	17	11	10	9	12
25	8	7	7	5	5	7	11	12	11	9	9	9	9	9	9	11	13	12	14	13	11	12	10	9	10
26	9	10	9	8	6	7	14	18	13	10	9	9	9	8	9	11	15	25	27	34	28	22	20	15	14
27	17	14	7	5	5	6	19	23	17	14	16	17	16	11	10	14	15	16	31	13	12	11	11	14	14
28	11	12	10	12	29	32	28	28	22	23	25	17	13	12	12	16	24	22	20	28	30	13	16	22	20
29	19	23	25	34	33	26	18	21	17	16	13	9	8	7	7	8	T	T	T	T	T	T	T	T	T
30	T	T	T	T	T	T	T	T	T	T	T	T	T	T	T	T	T	T	T	T	T	T	T	T	T
31	T	T	T	T	T	T	T	T	T	T	T	M	M	M	M	40	47	37	74	53	47	41	30	21	

MONTHLY STATISTICS:

GEOM	ARITH-----PERCENTILES-----										RANGE-----		STN GEOM	PERCENT	NO. OF TIMES	
MEAN	MEDIAN	MEAN	50	90	95	98	99	1-HR	24-HR	DEVIATION	VALID DATA	ABOVE	LIMIT	LEVEL		
14	14	16	14	29	34	42	49	3	-	74	5	-	30	2	94	0

NOTES: 1. FLAGS FOR INVALID DATA :  
D: DYNAMIC CALIBRATION  
T: TELEMETRY/DATALOGGR FAULT  
M: MAINTENANCE OR ANALYZER FAULT  
P: POWER FAILURE

THE HONGKONG ELECTRIC COMPANY, LTD.  
AIR QUALITY DATA MONTHLY TIME SERIES REPORT  
MONTH:OCTOBER

STATION : POK FU LAM  
POLLUTANT : SULPHUR DIOXIDE

YEAR : 2016  
UNIT : MICROGRAMS/CUBIC METER

DAY	1	2	3	4	5	6	7	8	9	10	11	12	13	14	15	16	17	18	19	20	21	22	23	24	MEAN
1	16	15	12	11	8	2	0	0	0	1	1	1	1	0	0	0	2	1	0	1	9	26	16	27	6
2	15	7	13	12	9	12	13	11	12	13	11	17	15	14	14	19	10	9	8	10	8	5	20	6	12
3	2	1	1	1	1	0	1	2	3	2	1	1	1	0	0	0	0	0	0	1	1	1	2	1	1
4	1	1	1	1	1	0	0	0	2	1	1	1	0	0	0	1	1	1	1	2	3	2	2	2	1
5	2	1	1	12	10	3	3	6	4	28	27	10	12	27	17	3	2	2	2	3	1	1	1	2	8
6	2	1	2	2	1	1	1	1	1	1	1	0	0	0	7	20	8	7	4	0	0	0	0	0	2
7	0	0	1	4	3	1	1	3	3	4	3	1	1	1	0	0	6	2	1	2	2	1	1	1	2
8	3	5	4	6	7	4	4	2	4	6	5	3	3	2	2	2	2	2	2	2	3	1	1	5	4
9	5	3	2	3	7	10	6	4	3	2	2	4	3	2	2	2	1	1	0	0	0	0	0	0	3
10	0	0	0	0	0	0	0	0	0	0	0	0	0	1	2	1	0	1	1	1	1	0	0	1	0
11	1	0	0	0	0	0	0	0	0	0	0	1	0	0	1	1	0	0	0	0	0	0	0	0	0
12	0	0	0	0	0	0	0	0	0	0	0	0	0	0	0	0	0	0	0	0	0	0	0	0	0
13	0	0	0	0	0	0	0	1	1	2	1	0	0	0	0	0	1	1	1	1	0	1	2	1	1
14	2	2	2	2	3	3	2	3	3	2	1	0	0	0	0	1	2	3	1	1	1	1	1	1	2
15	2	2	3	2	2	2	2	2	2	3	2	2	1	1	1	1	2	11	14	27	17	4	2	2	5
16	2	2	2	2	2	2	2	2	3	2	2	2	1	1	1	1	1	2	2	2	2	2	3	3	2
17	2	2	2	2	2	2	2	2	4	3	2	2	2	4	2	0	0	0	0	0	0	0	0	0	1
18	0	0	0	0	0	0	0	0	0	0	0	0	0	0	0	0	0	0	0	0	0	0	0	0	0
19	0	0	0	0	0	0	0	0	0	0	0	0	0	1	0	0	0	0	0	0	0	0	0	0	0
20	0	1	1	1	2	1	1	3	3	5	21	6	7	13	9	20	19	11	12	5	4	8	9	8	7
21	6	5	4	3	3	2	1	1	1	1	2	5	2	1	0	0	0	0	0	0	0	0	0	0	2
22	0	0	0	1	1	1	2	4	7	10	8	13	11	9	13	7	9	8	4	7	5	1	1	2	5
23	1	1	2	1	0	0	0	0	4	8	5	2	6	10	3	1	1	1	0	1	1	2	2	0	2
24	0	0	0	0	0	0	1	30	20	4	0	2	1	2	2	2	1	1	1	1	1	0	0	1	3
25	1	1	1	0	0	1	1	2	3	1	1	0	0	1	0	0	0	0	0	1	1	1	1	1	1
26	1	1	2	2	1	1	2	3	1	1	1	0	0	1	0	0	1	0	0	1	0	1	1	1	1
27	0	0	0	0	0	0	5	1	27	20	16	25	18	11	11	2	1	1	1	1	0	0	0	0	6
28	0	3	2	1	10	38	49	21	53	47	40	12	2	9	10	12	19	13	1	1	0	1	0	14	
29	1	4	7	7	6	5	3	3	6	5	1	1	1	0	0	0	0	T	T	T	T	T	T	T	3
30	T	T	T	T	T	T	T	T	T	T	T	T	T	T	T	T	T	T	T	T	T	T	T	T	
31	T	T	T	T	T	T	T	T	T	T	T	3	9	23	19	6	16	7	17	7	4	3	2	2	

MONTHLY STATISTICS:

GEOM	ARITH-----PERCENTILES-----										RANGE-----		STN GEOM	PERCENT	NO. OF TIMES		
MEAN	MEDIAN	MEAN	50	90	95	98	99	1-HR		24-HR		DEVIATION	VALID DATA	ABOVE	LIMIT	LEVEL	
3	1	3	1	10	15	23	27	0	-	53	0	-	14	3	94	0	

- NOTES: 1. FLAGS FOR INVALID DATA :
- D: DYNAMIC CALIBRATION
  - T: TELEMETRY/DATALOGGR FAULT
  - M: MAINTENANCE OR ANALYZER FAULT
  - P: POWER FAILURE

THE HONGKONG ELECTRIC COMPANY, LTD.  
AIR QUALITY DATA MONTHLY TIME SERIES REPORT  
MONTH:OCTOBER

STATION : POK FU LAM  
POLLUTANT : NITROGEN DIOXIDE

YEAR : 2016  
UNIT : MICROGRAMS/CUBIC METER

DAY	1	2	3	4	5	6	7	8	9	10	11	12	13	14	15	16	17	18	19	20	21	22	23	24	MEAN
1	108	100	90	79	69	45	17	22	9	6	0	3	1	0	0	1	2	3	12	12	32	48	52	70	33
2	60	44	68	60	55	56	58	55	43	51	46	41	51	45	59	46	30	28	29	32	34	34	52	28	46
3	10	10	7	4	10	8	16	30	28	30	17	20	17	21	17	12	11	28	32	21	17	12	12	8	17
4	3	0	0	0	0	0	4	12	20	17	24	21	10	12	10	7	17	20	20	26	14	16	10	17	12
5	7	10	6	20	16	4	9	30	42	58	53	45	46	43	31	15	16	19	20	13	8	5	3	10	22
6	11	6	5	3	3	10	24	43	50	41	34	25	11	23	33	77	58	73	65	19	15	19	7	2	27
7	3	0	3	33	27	14	21	30	31	32	38	36	25	31	28	28	37	60	64	38	35	24	33	32	29
8	42	34	20	28	25	18	27	26	29	31	30	29	31	34	33	32	30	34	36	35	30	29	22	27	30
9	28	M	20	21	25	27	20	31	34	28	27	28	27	23	25	33	42	54	53	50	45	46	43	42	34
10	32	28	23	22	17	18	24	28	29	30	26	25	22	26	35	29	37	43	39	39	35	28	26	25	29
11	30	22	17	13	11	11	20	37	42	45	39	42	43	38	40	52	62	63	57	46	43	34	30	29	36
12	23	17	15	11	11	12	17	28	23	27	17	19	17	23	17	21	22	28	31	19	23	21	25	12	20
13	8	8	8	6	6	7	10	35	45	30	17	14	13	17	21	26	28	29	25	23	21	11	10	10	18
14	10	8	7	7	7	8	9	32	25	16	12	12	15	19	25	33	31	20	24	22	17	14	18	15	17
15	12	10	9	9	10	9	21	41	38	38	19	15	21	32	27	25	31	57	75	89	102	56	50	37	35
16	56	45	29	22	16	19	24	31	31	28	27	22	22	20	15	20	21	25	23	21	25	51	34	27	27
17	19	14	10	10	13	15	25	40	41	36	20	16	15	18	20	17	17	21	14	12	8	6	6	7	18
18	6	5	4	4	3	5	6	8	8	8	8	6	3	6	6	5	5	7	2	1	2	0	1	2	5
19	0	1	1	0	0	0	2	4	8	8	7	10	14	10	18	25	20	14	9	8	5	5	4	4	7
20	6	10	9	9	9	4	39	51	53	54	51	48	56	58	59	78	83	75	96	99	71	70	58	57	50
21	50	42	33	29	23	21	20	19	20	19	23	26	17	12	9	9	5	5	6	8	6	8	6	2	17
22	2	2	0	18	15	4	13	25	39	31	21	26	11	18	20	11	17	27	22	13	10	2	3	4	15
23	1	M	3	1	0	2	19	7	20	21	14	11	7	10	4	8	11	11	9	11	7	8	3	2	8
24	4	1	0	0	0	0	6	26	18	7	2	6	4	4	4	7	11	9	8	7	5	2	2	2	6
25	1	1	1	0	0	1	2	9	14	9	5	3	4	6	7	6	7	8	7	3	5	5	3	6	5
26	10	17	9	6	3	3	11	25	20	12	12	10	7	12	12	13	24	48	55	50	35	23	32	25	20
27	14	14	8	4	4	6	19	20	38	34	31	35	32	27	23	26	29	27	32	14	10	10	11	5	20
28	8	24	28	24	28	45	50	36	47	52	36	20	13	14	17	21	39	50	48	50	42	37	25	38	33
29	52	61	64	63	57	40	11	23	23	20	13	9	6	7	14	16	19	T	T	T	T	T	T	T	29
30	T	T	T	T	T	T	T	T	T	T	T	T	T	T	T	T	T	T	T	T	T	T	T	T	T
31	T	T	T	T	T	T	T	T	T	T	T	43	50	56	62	50	46	46	84	84	41	35	28	33	

MONTHLY STATISTICS:

GEOM	ARITH-----PERCENTILES-----								-----RANGE-----				STN GEOM	PERCENT	NO. OF TIMES	
MEAN	MEDIAN	MEAN	50	90	95	98	99	1-HR	24-HR	DEVIATION	VALID DATA	ABOVE	LIMIT	LEVEL		
17	20	23	20	50	58	75	84	0	-	108	5	-	50	3	94	0

- NOTES: 1. FLAGS FOR INVALID DATA :
- D: DYNAMIC CALIBRATION
  - T: TELEMETRY/DATALOGGR FAULT
  - M: MAINTENANCE OR ANALYZER FAULT
  - P: POWER FAILURE

THE HONGKONG ELECTRIC COMPANY, LTD.  
AIR QUALITY DATA MONTHLY TIME SERIES REPORT  
MONTH:OCTOBER

STATION : AP LEI CHAU  
POLLUTANT : SULPHUR DIOXIDE

YEAR : 2016  
UNIT : MICROGRAMS/CUBIC METER

DAY	1	2	3	4	5	6	7	8	9	10	11	12	13	14	15	16	17	18	19	20	21	22	23	24	MEAN
1																									
2																									
3																									
4																									
5																									
6																									
7																									
8																									
9																									
10																									
11																									
12																									
13																									
14																									
15																									
16																									
17																									
18																									
19																									
20																									
21																									
22																									
23																									
24																									
25																									
26																									
27																									
28																									
29																									
30																									
31																									

AMBIENT AIR MONITORING AT AP LEI CHAU TEMPORARILY SUSPENDED

THE HONGKONG ELECTRIC COMPANY, LTD.  
AIR QUALITY DATA MONTHLY TIME SERIES REPORT  
MONTH:OCTOBER

STATION : AP LEI CHAU  
POLLUTANT : NITROGEN DIOXIDE

YEAR : 2016  
UNIT : MICROGRAMS/CUBIC METER

DAY	1	2	3	4	5	6	7	8	9	10	11	12	13	14	15	16	17	18	19	20	21	22	23	24	MEAN
1																									
2																									
3																									
4																									
5																									
6																									
7																									
8																									
9																									
10																									
11																									
12																									
13																									
14																									
15																									
16																									
17																									
18																									
19																									
20																									
21																									
22																									
23																									
24																									
25																									
26																									
27																									
28																									
29																									
30																									
31																									

AMBIENT AIR MONITORING AT AP LEI CHAU TEMPORARILY SUSPENDED

THE HONGKONG ELECTRIC COMPANY, LTD.  
AIR QUALITY DATA MONTHLY TIME SERIES REPORT  
MONTH:OCTOBER

STATION : CHEUNG CHAU  
POLLUTANT : SULPHUR DIOXIDE

YEAR : 2016  
UNIT : MICROGRAMS/CUBIC METER

DAY	1	2	3	4	5	6	7	8	9	10	11	12	13	14	15	16	17	18	19	20	21	22	23	24	MEAN	
1	0	0	0	0	0	0	0	0	0	0	0	0	0	0	0	0	0	0	0	0	0	0	0	1	0	
2	2	0	0	0	0	0	0	0	0	0	0	0	0	0	0	0	0	0	0	0	0	0	0	0	1	0
3	0	0	0	0	0	0	0	0	0	0	0	0	0	0	0	1	0	0	0	0	0	0	0	0	0	0
4	0	0	0	0	0	0	0	0	1	0	0	0	0	0	0	0	0	0	0	0	0	0	0	0	0	0
5	0	0	0	0	0	0	0	0	0	0	0	0	0	0	1	1	0	0	0	0	0	0	0	0	1	0
6	0	0	0	0	0	0	0	0	0	0	0	0	0	0	0	0	1	1	1	0	0	0	0	0	0	0
7	0	0	0	0	0	0	0	0	0	1	0	0	0	0	0	0	0	0	0	0	0	0	0	0	1	0
8	0	3	4	4	2	0	0	1	1	2	1	0	0	0	0	0	0	0	0	0	0	1	0	2	2	1
9	0	0	0	0	0	0	0	0	1	1	0	0	0	0	0	0	0	0	0	0	0	0	0	0	1	0
10	0	0	0	0	0	0	0	0	0	0	0	0	M	1	0	0	0	0	0	0	0	0	0	0	1	0
11	0	0	0	0	0	0	0	0	0	0	0	0	0	0	0	0	0	0	0	0	0	0	0	0	0	0
12	0	0	0	0	0	0	0	0	0	0	0	0	0	0	0	0	0	0	0	0	0	1	0	0	1	0
13	0	0	0	0	0	0	0	0	0	0	0	0	0	0	0	0	0	0	0	0	0	1	1	2	1	0
14	0	0	0	0	0	0	0	0	0	0	0	0	0	0	0	0	0	0	0	0	0	0	0	0	1	0
15	0	0	0	0	0	0	1	1	1	0	0	0	0	0	0	0	0	0	0	0	0	0	0	0	2	0
16	0	0	0	0	0	0	0	0	0	0	0	0	0	0	0	0	3	1	0	0	0	3	3	3	1	1
17	0	0	0	0	0	0	1	2	2	0	0	1	0	0	0	0	0	0	0	0	0	0	0	0	0	0
18	0	0	0	0	0	0	0	0	0	0	0	0	0	0	0	0	0	0	0	0	0	0	0	0	0	0
19	0	0	0	0	0	0	0	0	0	1	0	0	0	0	0	0	0	0	0	0	0	0	0	0	1	0
20	0	0	0	0	0	0	0	0	0	0	0	1	1	2	10	18	15	4	1	1	2	0	6	3	3	1
21	2	2	2	0	3	4	2	0	0	0	0	0	0	0	0	0	0	0	0	0	0	0	0	1	1	1
22	0	0	0	0	0	0	0	0	0	0	1	2	2	1	1	1	0	0	0	0	0	0	2	14	1	1
23	12	8	7	10	9	8	7	15	17	5	14	15	28	16	18	15	9	5	12	10	14	11	10	6	12	12
24	4	3	3	1	1	3	2	2	1	1	3	7	10	14	10	7	4	4	3	7	6	5	6	10	5	5
25	9	10	8	8	7	11	5	6	11	5	1	0	0	0	0	0	0	0	0	0	0	0	0	5	4	4
26	2	2	4	2	1	0	0	0	0	0	1	0	0	0	0	0	0	0	0	0	0	0	0	5	1	1
27	1	0	0	0	0	1	3	5	8	4	0	1	0	2	0	2	0	0	2	2	5	1	0	4	2	2
28	3	1	0	0	1	10	5	5	15	8	8	9	0	5	1	1	4	2	1	0	0	0	4	6	4	4
29	4	5	6	4	1	2	6	2	10	4	10	5	5	2	4	4	2	0	0	0	0	0	4	3	3	3
30	0	0	0	0	0	0	0	0	1	0	0	0	0	1	0	0	0	0	0	0	0	0	0	4	0	0
31	1	0	0	0	0	0	0	0	4	4	3	2	2	1	6	3	4	2	1	0	2	2	0	1	2	2

MONTHLY STATISTICS:

GEOM	ARITH-----PERCENTILES-----							-----RANGE-----				STN GEOM	PERCENT	NO. OF TIMES		
MEAN	MEDIAN	MEAN	50	90	95	98	99	1-HR		24-HR		DEVIATION	VALID DATA	ABOVE LIMIT LEVEL		
3	0	1	0	4	8	12	15	0	-	28	0	-	12	3	100	0

- NOTES: 1. FLAGS FOR INVALID DATA :
- D: DYNAMIC CALIBRATION
  - T: TELEMETRY/DATALOGGR FAULT
  - M: MAINTENANCE OR ANALYZER FAULT
  - P: POWER FAILURE

THE HONGKONG ELECTRIC COMPANY, LTD.  
AIR QUALITY DATA MONTHLY TIME SERIES REPORT  
MONTH:OCTOBER

STATION : CHEUNG CHAU  
POLLUTANT : NITROGEN DIOXIDE

YEAR : 2016  
UNIT : MICROGRAMS/CUBIC METER

DAY	1	2	3	4	5	6	7	8	9	10	11	12	13	14	15	16	17	18	19	20	21	22	23	24	MEAN
1	105	96	93	83	78	75	76	62	51	49	21	3	2	3	2	4	4	6	5	6	23	54	49	85	43
2	87	84	76	69	66	64	62	55	51	51	61	47	48	52	32	21	17	21	25	19	12	12	36	68	47
3	62	66	14	39	22	16	28	27	18	28	31	38	34	32	34	30	33	16	16	11	9	8	8	15	26
4	17	33	44	34	32	31	48	38	51	41	18	6	11	2	0	0	1	1	2	13	11	4	3	16	19
5	10	M	7	18	39	54	53	42	42	48	38	28	39	36	7	5	3	2	8	12	8	5	16	10	23
6	19	2	5	10	13	23	31	16	18	29	30	27	21	41	9	14	33	87	118	34	26	32	16	4	27
7	11	35	37	43	27	31	36	37	35	38	35	36	43	52	30	35	51	78	88	107	76	58	59	59	47
8	61	62	45	39	32	34	29	37	28	27	28	38	39	44	46	42	46	43	52	46	37	34	31	42	40
9	38	29	34	32	34	31	35	41	41	46	42	32	41	46	47	47	41	43	52	57	51	51	47	48	42
10	44	33	26	34	36	34	40	38	36	29	43	35	M	20	31	25	30	59	44	37	53	57	52	47	38
11	29	22	21	15	22	12	17	17	20	32	36	36	33	39	41	44	40	41	46	43	45	37	28	25	31
12	26	23	17	15	10	11	20	20	30	35	33	42	39	38	43	39	46	51	61	68	77	61	56	15	37
13	2	19	10	22	32	35	40	40	41	42	37	31	28	36	41	5	2	9	19	14	12	14	28	19	24
14	19	5	9	28	8	18	43	33	30	44	33	28	26	5	2	2	4	3	4	1	1	4	11	11	16
15	6	21	5	6	32	35	45	36	35	30	33	31	21	31	31	26	19	13	56	62	105	100	64	61	38
16	38	30	18	13	13	13	18	16	21	29	30	25	37	34	34	32	27	21	8	25	82	123	119	92	37
17	51	38	26	33	36	41	41	45	39	43	37	25	8	8	9	9	10	12	3	3	3	2	1	4	22
18	13	2	3	2	2	4	2	17	20	18	18	23	0	6	1	3	1	4	1	0	0	0	0	8	6
19	6	M	3	1	5	11	6	4	10	12	9	1	1	5	2	3	17	25	7	6	2	2	5	5	6
20	3	5	6	9	18	18	62	59	47	42	44	69	65	85	65	51	98	120	85	103	73	83	54	67	55
21	48	49	44	30	29	26	31	25	14	15	14	12	9	2	3	0	0	0	0	0	5	8	12	4	16
22	1	2	0	0	0	1	1	9	10	5	5	3	4	3	0	0	1	0	3	5	3	4	8	34	4
23	38	36	32	36	35	37	44	43	30	16	24	22	23	15	21	30	19	20	34	37	41	38	38	18	30
24	23	18	13	6	13	19	19	11	1	0	1	5	10	8	3	2	4	6	10	26	17	16	19	29	12
25	33	35	28	28	16	27	16	9	7	2	0	0	0	0	0	0	0	0	6	4	4	1	2	7	9
26	8	5	9	7	6	2	3	6	4	3	4	0	0	0	0	0	0	0	6	8	3	2	0	17	4
27	5	5	0	6	31	45	47	41	39	37	15	8	0	0	1	17	5	1	14	16	15	9	20	7	16
28	9	13	22	42	58	60	57	49	44	36	18	15	1	2	2	5	12	10	9	3	2	39	41	64	26
29	58	41	38	45	57	66	68	54	46	41	28	11	12	7	15	17	15	1	69	76	63	55	53	57	41
30	40	29	22	20	14	18	23	23	31	36	21	13	10	17	11	10	9	5	37	65	76	94	85	74	33
31	65	50	40	36	29	26	31	34	49	50	53	55	55	48	33	19	26	24	35	116	112	85	50	53	49

MONTHLY STATISTICS:

GEOM	ARITH-----PERCENTILES-----							-----RANGE-----					STN GEOM	PERCENT	NO. OF TIMES	
MEAN	MEDIAN	MEAN	50	90	95	98	99	1-HR	24-HR	DEVIATION	VALID DATA	ABOVE	LIMIT	LEVEL		
19	25	28	25	58	74	92	105	0	-	123	4	-	55	3	100	0

NOTES: 1. FLAGS FOR INVALID DATA :  
D: DYNAMIC CALIBRATION  
T: TELEMETRY/DATALOGGR FAULT  
M: MAINTENANCE OR ANALYZER FAULT  
P: POWER FAILURE

THE HONGKONG ELECTRIC COMPANY, LTD.  
AIR QUALITY DATA MONTHLY TIME SERIES REPORT  
MONTH: NOVEMBER

STATION : VICTORIA PEAK  
POLLUTANT : NITROGEN DIOXIDE

YEAR : 2016  
UNIT : MICROGRAMS/CUBIC METER

DAY	1	2	3	4	5	6	7	8	9	10	11	12	13	14	15	16	17	18	19	20	21	22	23	24	MEAN
1	21	16	10	6	5	3	13	29	24	26	24	23	26	25	28	26	25	38	45	47	44	46	27	37	26
2	27	M	9	13	9	5	11	20	26	20	21	27	22	19	26	30	38	41	39	43	39	26	23	24	24
3	31	19	11	10	10	10	16	26	31	32	29	26	25	25	31	41	59	61	51	56	37	41	42	31	
4	43	31	23	20	20	18	31	48	48	53	43	58	34	37	40	27	34	55	13	10	27	9	10	1	31
5	0	0	0	0	0	0	0	17	55	33	11	24	26	13	0	3	2	8	12	18	7	2	0	0	10
6	0	0	0	0	0	0	0	7	10	9	7	0	0	0	0	0	0	0	0	0	0	0	0	1	1
7	0	0	0	0	0	0	0	11	21	34	16	3	1	4	4	2	5	8	13	4	2	2	0	0	5
8	2	1	1	0	0	0	2	12	30	35	34	26	38	31	46	55	92	59	53	49	45	42	38	47	31
9	33	33	13	4	4	1	6	16	22	31	25	23	21	22	26	25	32	34	34	32	31	47	42	42	25
10	37	28	23	14	9	9	14	28	38	46	40	41	40	36	34	42	46	56	52	60	55	47	46	49	37
11	46	44	24	16	19	14	12	14	36	56	50	40	28	23	37	20	23	26	22	16	9	15	7	3	25
12	5	3	0	0	0	0	0	2	9	13	21	12	10	14	18	18	11	9	14	13	11	3	0	0	8
13	0	0	0	0	0	0	0	0	1	0	0	0	0	0	0	0	0	2	0	0	0	0	0	0	0
14	0	0	0	0	0	0	0	4	31	35	52	43	49	36	28	42	67	78	69	56	70	75	61	41	35
15	58	49	10	0	7	19	38	38	51	74	52	17	2	7	9	6	13	3	4	0	0	1	0	0	19
16	0	M	0	0	0	0	0	1	3	9	6	6	8	8	12	9	15	39	54	39	11	2	0	1	10
17	1	0	0	0	0	0	2	8	16	26	23	26	12	14	16	12	11	11	12	31	46	40	22	3	14
18	3	2	0	0	0	0	0	3	5	9	10	17	14	19	11	19	9	7	23	26	4	0	0	1	8
19	0	2	1	0	0	0	0	1	7	7	2	3	0	1	1	3	5	3	1	0	0	0	0	3	2
20	0	0	0	0	0	0	1	1	3	0	0	1	0	0	0	0	1	3	1	0	0	0	0	1	1
21	0	4	2	0	0	0	0	5	4	10	3	3	4	7	13	21	23	10	2	0	3	0	0	1	5
22	1	3	1	0	1	0	0	9	24	16	19	17	16	18	11	14	16	15	9	14	15	8	5	4	10
23	3	1	0	0	0	0	2	16	21	21	20	20	14	26	29	36	35	52	45	43	37	32	32	35	22
24	32	24	18	16	16	17	22	27	31	34	37	35	25	26	24	28	26	42	33	32	36	31	22	16	27
25	14	14	9	5	7	7	7	13	19	17	26	27	25	33	25	27	21	24	27	22	8	11	9	12	17
26	9	10	8	6	6	4	8	24	28	32	29	29	27	26	24	25	30	38	31	30	31	21	18	31	22
27	22	18	15	10	7	8	14	17	22	28	24	21	22	32	31	33	30	56	63	63	55	42	37	21	29
28	26	22	15	14	10	8	12	26	32	28	22	22	17	15	10	12	24	34	46	56	77	69	45	22	28
29	20	8	5	4	3	4	17	38	39	27	32	32	38	52	69	81	77	72	69	58	83	53	52	55	41
30	37	M	18	11	7	7	20	33	44	51	51	31	23	31	43	40	43	48	41	35	23	39	49	46	34

MONTHLY STATISTICS:

GEOM	ARITH ----- PERCENTILES -----							----- RANGE -----				STN GEOM	PERCENT	NO. OF TIMES		
MEAN	MEDIAN	MEAN	50	90	95	98	99	1-HR	24-HR	DEVIATION	VALID DATA	ABOVE	LIMIT	LEVEL		
16	15	19	15	46	55	66	74	0	-	92	0	-	41	3	100	0

NOTES: 1. FLAGS FOR INVALID DATA :  
D: DYNAMIC CALIBRATION  
T: TELEMETRY/DATALOGGR FAULT  
M: MAINTENANCE OR ANALYZER FAULT  
P: POWER FAILURE

THE HONGKONG ELECTRIC COMPANY, LTD.  
AIR QUALITY DATA MONTHLY TIME SERIES REPORT  
MONTH: NOVEMBER

STATION : VICTORIA PEAK  
POLLUTANT : SULPHUR DIOXIDE

YEAR : 2016  
UNIT : MICROGRAMS/CUBIC METER

DAY	1	2	3	4	5	6	7	8	9	10	11	12	13	14	15	16	17	18	19	20	21	22	23	24	MEAN
1	2	2	2	1	1	1	1	1	3	2	1	1	1	1	2	1	0	0	1	1	1	1	1	1	1
2	1	1	1	1	1	1	1	1	3	1	1	1	1	1	1	1	1	1	1	3	1	1	1	0	1
3	0	0	0	0	0	0	1	1	2	1	2	1	1	1	1	1	1	1	2	2	1	1	1	1	1
4	1	0	1	1	2	2	2	3	3	3	2	11	6	5	6	5	8	13	3	2	3	3	4	2	4
5	3	3	4	3	2	3	3	3	9	4	3	2	2	1	1	1	1	2	2	3	5	4	4	4	3
6	3	2	3	3	2	3	2	2	2	2	2	3	4	3	2	2	2	3	3	4	3	2	2	3	3
7	1	2	2	2	2	1	1	1	2	1	1	1	0	1	1	1	2	1	1	1	2	1	0	0	1
8	1	2	2	1	1	1	1	0	2	1	1	2	13	8	14	9	12	3	3	4	2	1	1	2	4
9	1	1	1	0	0	0	1	2	1	1	1	2	1	1	1	1	1	1	1	1	3	1	1	0	1
10	0	0	0	0	0	0	0	0	1	1	1	0	1	0	0	0	0	0	0	1	1	0	0	1	0
11	1	1	1	2	2	1	1	1	3	5	3	3	2	2	3	2	2	2	2	2	3	3	2	2	2
12	1	1	1	1	1	1	1	1	1	2	3	5	4	4	3	3	4	4	4	5	5	5	2	1	3
13	1	2	1	1	1	2	2	3	3	2	2	2	1	0	1	0	0	0	0	0	0	0	0	0	1
14	0	0	0	0	0	0	0	0	0	7	23	9	7	11	11	19	36	21	10	7	10	7	7	6	8
15	8	7	4	3	5	7	13	9	6	6	4	4	5	13	6	5	6	3	2	1	1	2	1	2	5
16	1	0	0	0	0	0	1	1	1	0	0	0	1	0	0	0	0	1	1	0	1	1	1	1	0
17	1	1	3	3	2	2	1	2	1	0	1	0	0	1	1	2	2	2	3	4	4	3	2	4	2
18	4	3	4	3	3	3	4	4	3	2	2	2	2	2	2	3	2	2	2	4	3	1	2	0	3
19	1	1	1	2	2	2	3	3	1	2	1	2	2	2	2	3	2	2	1	1	1	2	3	3	2
20	2	1	2	3	3	4	4	3	3	4	5	5	3	1	2	2	2	2	3	2	2	3	3	2	3
21	1	2	2	1	0	1	0	1	2	2	1	1	1	1	0	0	0	1	1	1	1	0	1	2	1
22	3	2	1	1	1	0	0	0	0	0	0	0	0	0	0	0	0	0	0	0	0	0	0	0	0
23	0	0	0	0	0	0	0	0	0	0	0	0	0	0	0	0	0	0	0	1	0	0	0	0	0
24	0	0	0	0	0	0	0	0	1	1	1	1	0	0	0	0	0	0	0	1	1	0	16	0	1
25	0	0	0	0	0	1	0	0	1	1	1	1	1	1	1	1	1	1	1	0	0	1	1	1	1
26	1	1	1	1	1	1	1	1	1	1	1	1	1	3	1	0	0	1	0	1	0	0	0	0	1
27	0	0	0	0	0	0	0	0	2	1	0	0	0	1	1	1	1	1	1	2	3	0	0	0	1
28	0	0	0	0	0	0	0	1	1	1	1	1	1	1	1	1	1	1	1	1	3	2	1	4	1
29	4	3	3	3	3	3	2	3	3	2	2	2	2	2	3	4	3	2	2	6	6	2	1	1	3
30	1	1	1	1	2	2	2	2	4	6	5	4	3	4	4	4	3	3	4	5	7	6	5	4	3

MONTHLY STATISTICS:

GEOM	ARITH-----PERCENTILES-----							-----RANGE-----				STN GEOM	PERCENT	NO. OF TIMES		
MEAN	MEDIAN	MEAN	50	90	95	98	99	1-HR		24-HR		DEVIATION	VALID DATA	ABOVE LIMIT LEVEL		
2	1	2	1	4	6	10	13	0	-	36	0	-	8	2	100	0

- NOTES: 1. FLAGS FOR INVALID DATA :
- D: DYNAMIC CALIBRATION
  - T: TELEMETRY/DATALOGGR FAULT
  - M: MAINTENANCE OR ANALYZER FAULT
  - P: POWER FAILURE

THE HONGKONG ELECTRIC COMPANY, LTD.  
AIR QUALITY DATA MONTHLY TIME SERIES REPORT

STATION : CHUNG HOM KOK ZONE SUBSTATION  
POLLUTANT : NITROGEN DIOXIDE

MONTH: NOVEMBER

YEAR : 2016

UNIT : MICROGRAMS/CUBIC METER

DAY	1	2	3	4	5	6	7	8	9	10	11	12	13	14	15	16	17	18	19	20	21	22	23	24	MEAN
1	8	6	5	2	1	0	6	17	9	8	7	4	2	4	5	5	5	7	12	19	14	10	5	7	7
2	8	6	4	3	2	2	3	4	5	4	5	4	3	4	6	8	10	11	10	11	9	7	7	9	6
3	7	10	10	7	6	5	9	13	14	10	6	5	4	4	6	8	8	9	14	19	13	9	12	10	9
4	9	6	4	5	4	2	3	6	8	6	10	6	32	26	15	7	5	14	8	5	4	6	9	8	9
5	6	4	4	3	1	1	1	6	11	14	6	4	5	4	3	5	8	19	31	12	9	7	4	2	7
6	1	0	0	0	0	0	0	2	6	6	3	4	3	3	4	4	8	8	3	2	2	1	0	3	3
7	0	2	1	1	2	2	3	6	6	5	2	2	1	1	1	3	3	3	2	4	7	3	2	3	3
8	2	1	1	2	4	2	3	5	7	7	5	6	4	4	6	9	74	23	13	15	14	16	17	27	11
9	22	9	6	2	3	4	6	11	11	13	14	11	10	6	6	7	11	14	14	13	13	14	25	14	11
10	17	16	16	13	8	7	12	19	26	26	36	46	41	42	40	40	44	61	66	62	58	46	38	24	34
11	13	24	24	34	34	29	14	10	10	11	11	12	18	13	12	12	12	10	9	6	6	4	3	3	14
12	1	0	0	0	0	3	3	4	4	4	6	5	5	4	5	7	7	5	9	5	5	5	1	2	4
13	2	1	0	0	0	3	2	3	4	6	5	6	4	4	3	3	3	2	1	1	0	2	0	0	2
14	0	0	0	0	0	0	0	8	13	8	1	5	9	9	20	M	36	32	29	28	26	23	55	49	15
15	74	57	78	63	66	76	93	59	71	57	46	18	11	12	8	7	8	9	13	5	5	5	5	1	35
16	0	0	0	0	0	0	1	4	4	4	3	3	2	0	2	3	3	3	2	2	3	5	6	7	2
17	3	4	4	3	3	3	4	8	6	5	5	7	6	5	9	12	11	10	6	11	9	7	7	3	6
18	1	2	1	1	0	1	1	5	2	1	1	2	2	7	5	4	2	1	5	5	1	0	0	1	2
19	0	0	1	1	0	0	0	2	1	0	0	1	1	1	2	2	2	1	1	1	0	1	1	0	1
20	0	0	0	0	2	0	3	1	1	1	2	3	1	4	2	1	2	3	3	2	1	2	2	2	2
21	1	2	2	0	0	1	0	2	2	1	2	1	2	1	0	0	0	1	1	1	1	1	0	2	1
22	3	5	0	1	3	1	2	3	3	1	0	2	2	2	0	1	0	1	0	0	0	0	0	0	1
23	0	0	0	0	0	0	0	1	0	0	0	0	0	0	0	4	8	9	7	5	6	3	3	9	2
24	9	12	9	5	3	3	4	6	6	4	4	3	2	3	4	5	9	9	11	11	12	9	8	8	7
25	7	7	5	4	5	5	6	7	7	8	7	8	12	10	6	6	8	8	7	5	4	4	3	4	6
26	3	7	6	6	3	1	1	4	30	39	36	32	24	21	22	25	23	20	25	22	21	17	24	24	18
27	23	20	19	10	10	10	7	13	22	24	29	19	16	9	6	3	4	10	8	6	3	3	4	4	12
28	3	2	2	4	3	1	3	9	6	6	6	6	4	2	1	M	3	5	8	10	12	11	12	12	6
29	11	10	8	8	5	5	6	8	10	8	7	6	11	24	48	43	57	42	27	18	9	13	7	6	17
30	7	5	3	2	3	4	7	13	34	19	9	14	13	29	31	17	23	27	22	31	25	19	13	14	16

MONTHLY STATISTICS:

GEOM	ARITH-----PERCENTILES-----							-----RANGE-----				STN GEOM	PERCENT	NO. OF TIMES		
MEAN	MEDIAN	MEAN	50	90	95	98	99	1-HR	24-HR	DEVIATION	VALID DATA	ABOVE	LIMIT	LEVEL		
6	5	9	5	23	34	57	65	0	-	93	1	-	35	3	100	0

- NOTES: 1. FLAGS FOR INVALID DATA :
- D: DYNAMIC CALIBRATION
  - T: TELEMETRY/DATALOGGR FAULT
  - M: MAINTENANCE OR ANALYZER FAULT
  - P: POWER FAILURE

THE HONGKONG ELECTRIC COMPANY, LTD.  
AIR QUALITY DATA MONTHLY TIME SERIES REPORT

STATION : CHUNG HOM KOK ZONE SUBSTATION  
POLLUTANT : SULPHUR DIOXIDE

MONTH: NOVEMBER

YEAR : 2016

UNIT : MICROGRAMS/CUBIC METER

DAY	1	2	3	4	5	6	7	8	9	10	11	12	13	14	15	16	17	18	19	20	21	22	23	24	MEAN
1	2	2	1	1	1	1	1	1	1	1	1	1	1	0	0	0	0	0	0	1	1	1	1	1	1
2	1	1	1	1	1	1	1	1	1	1	1	1	1	1	1	0	0	1	1	1	1	1	1	1	1
3	0	0	1	1	1	1	1	1	1	1	1	1	1	1	1	1	0	1	1	1	1	0	1	1	1
4	1	1	2	3	4	4	3	3	3	2	2	2	12	6	5	3	2	3	2	3	2	2	5	3	3
5	3	3	2	2	2	2	2	3	3	3	2	1	1	1	1	1	2	1	2	4	4	4	2	5	2
6	3	3	3	3	2	2	2	3	3	3	4	4	3	3	3	3	4	3	4	3	4	2	2	3	3
7	1	3	2	2	2	1	2	2	1	2	1	1	1	1	1	2	1	1	1	1	2	1	1	2	1
8	1	2	1	2	1	1	0	1	1	1	1	1	1	1	2	1	9	2	1	1	1	0	0	1	1
9	1	1	1	1	1	1	1	2	1	1	2	1	1	1	1	1	1	1	1	1	2	2	1	1	1
10	1	1	1	1	0	0	0	0	1	1	1	1	1	1	1	1	1	1	1	1	1	1	1	0	1
11	0	0	1	1	1	1	1	1	1	2	1	1	2	2	1	1	1	1	2	2	2	1	2	2	1
12	2	2	1	1	1	2	2	2	3	4	6	6	6	6	6	6	5	4	6	5	7	5	3	4	4
13	4	4	4	3	3	5	4	4	4	6	5	6	4	4	4	2	2	2	2	2	1	1	1	0	3
14	1	0	1	1	1	0	0	1	1	1	0	3	3	8	15	23	25	18	20	21	21	27	42	36	11
15	19	28	27	16	20	27	16	13	21	13	9	5	5	9	6	5	5	3	5	3	3	2	3	2	11
16	1	1	0	0	0	1	1	2	1	1	1	2	1	0	0	0	2	1	1	1	2	1	1	1	1
17	1	3	2	2	2	1	1	2	1	0	0	1	1	1	2	3	1	2	1	3	3	2	2	3	2
18	3	3	3	3	2	3	3	4	3	2	2	2	2	3	2	3	4	2	6	6	3	1	2	2	3
19	2	2	2	3	3	4	4	2	2	2	3	4	3	3	5	4	3	2	2	2	2	3	3	3	3
20	2	3	3	5	4	3	4	3	3	4	5	5	4	3	2	1	1	2	2	2	2	3	2	2	3
21	2	3	2	1	1	1	1	2	3	2	1	1	2	1	1	1	1	2	1	2	1	1	1	3	2
22	3	3	1	1	1	1	1	0	0	0	0	0	0	0	0	0	0	0	0	0	0	0	0	0	0
23	0	0	0	0	0	0	0	0	0	0	0	0	0	0	0	0	0	0	0	0	0	0	0	0	0
24	1	1	0	0	0	0	1	1	1	1	1	1	1	1	1	1	1	1	1	1	1	1	1	1	1
25	0	1	0	0	1	1	0	1	1	1	1	0	1	0	1	1	1	1	1	1	0	1	1	1	1
26	1	1	2	1	1	1	1	0	2	1	1	1	0	0	0	0	0	0	0	0	0	0	0	0	1
27	0	0	0	0	0	0	0	0	0	0	0	1	0	0	0	0	0	0	0	0	0	0	0	1	0
28	1	1	1	1	1	1	1	2	2	2	2	3	2	2	2	2	2	3	3	3	4	4	4	4	2
29	4	3	3	3	3	2	2	2	2	2	2	1	1	1	1	1	1	1	0	0	1	1	1	1	2
30	1	1	1	2	2	2	3	3	3	3	2	2	2	8	6	2	2	2	3	4	6	5	4	4	3

MONTHLY STATISTICS:

GEOM	ARITH-----PERCENTILES-----							-----RANGE-----				STN GEOM	PERCENT	NO. OF TIMES		
MEAN	MEDIAN	MEAN	50	90	95	98	99	1-HR		24-HR		DEVIATION	VALID DATA	ABOVE LIMIT LEVEL		
2	1	2	1	4	6	17	23	0	-	42	0	-	11	2	100	0

- NOTES: 1. FLAGS FOR INVALID DATA :
- D: DYNAMIC CALIBRATION
  - T: TELEMETRY/DATALOGGR FAULT
  - M: MAINTENANCE OR ANALYZER FAULT
  - P: POWER FAILURE

THE HONGKONG ELECTRIC COMPANY, LTD.  
AIR QUALITY DATA MONTHLY TIME SERIES REPORT  
MONTH: NOVEMBER

STATION : VICTORIA ROAD SUBSTATION  
POLLUTANT : NITROGEN DIOXIDE

YEAR : 2016  
UNIT : MICROGRAMS/CUBIC METER

DAY	1	2	3	4	5	6	7	8	9	10	11	12	13	14	15	16	17	18	19	20	21	22	23	24	MEAN
1	22	15	14	12	10	10	17	21	23	23	23	22	25	22	20	23	22	29	32	29	29	25	23	20	21
2	19	M	11	12	11	11	12	16	19	15	14	17	18	18	20	19	34	34	22	19	20	17	17	17	18
3	17	13	11	10	9	10	14	17	20	22	21	17	16	17	16	22	25	27	28	28	27	27	25	23	19
4	24	22	17	14	14	15	25	28	32	29	30	30	22	23	29	18	85	55	24	26	26	24	25	22	27
5	18	12	10	8	7	9	17	28	38	22	33	20	11	13	12	12	14	15	14	13	13	12	14	13	16
6	13	10	8	7	7	9	11	16	13	12	13	13	12	11	11	12	12	13	12	12	13	12	13	11	12
7	9	9	7	9	9	10	17	23	18	20	23	20	16	13	13	13	20	32	28	22	23	20	16	12	17
8	12	11	9	9	7	9	14	29	24	32	29	25	23	22	39	35	48	38	38	37	27	28	24	24	25
9	22	22	16	11	13	11	13	14	17	17	17	16	16	17	18	20	21	23	21	21	23	27	25	19	18
10	17	15	13	10	8	9	10	14	15	19	20	20	21	23	22	24	25	26	24	24	23	23	21	22	19
11	21	20	16	17	18	19	19	19	22	25	26	32	26	27	32	32	30	39	29	24	19	18	18	17	24
12	16	15	15	14	13	13	15	17	20	19	21	20	23	28	22	21	23	23	24	25	20	19	18	16	19
13	16	17	15	15	14	16	17	18	18	18	18	18	19	18	18	17	19	21	19	18	17	17	20	23	18
14	28	15	12	13	15	16	15	24	25	31	31	35	30	30	29	42	39	30	44	46	43	41	39	39	30
15	39	41	41	40	39	43	42	45	44	47	53	74	45	32	27	27	26	26	25	22	21	20	18	18	36
16	17	M	17	16	16	16	18	21	23	22	21	21	22	23	24	26	36	37	41	35	34	25	21	19	24
17	19	19	18	18	17	18	21	21	23	24	22	24	26	26	31	33	31	30	30	37	36	33	30	23	25
18	23	22	21	20	19	19	21	24	24	22	22	25	24	25	25	28	29	27	28	27	24	21	20	18	23
19	18	18	18	17	17	17	18	19	21	23	21	22	21	22	21	22	25	32	21	19	18	20	19	13	20
20	13	13	12	13	13	13	13	15	14	14	14	16	17	18	17	16	18	18	16	15	15	16	17	16	15
21	14	13	12	10	10	11	13	16	15	15	15	15	16	16	17	21	23	26	19	16	14	13	13	15	15
22	15	15	15	14	14	13	16	18	20	19	21	21	22	19	17	18	19	20	20	17	17	16	15	10	17
23	10	10	10	11	10	11	12	17	18	19	17	18	16	19	20	M	31	25	22	20	18	15	14	16	16
24	15	13	11	10	10	11	12	15	17	19	19	21	21	23	25	27	26	26	24	22	20	18	19	16	18
25	15	17	14	13	13	13	13	15	18	18	21	24	25	31	30	30	28	28	25	22	20	20	20	19	21
26	18	17	16	14	15	20	22	21	20	21	20	19	20	20	23	19	18	22	20	21	25	20	18	20	20
27	16	14	15	12	12	11	12	16	19	21	22	25	27	27	28	29	26	25	26	26	24	22	21	20	21
28	22	17	16	16	15	16	18	22	24	26	28	28	28	26	25	26	28	32	34	28	34	35	29	25	25
29	25	23	19	20	22	20	23	30	32	34	29	32	33	39	42	45	48	47	43	40	43	38	34	29	33
30	28	M	18	16	15	16	16	23	27	27	31	30	35	36	38	40	41	37	35	33	29	29	27	26	28

MONTHLY STATISTICS:

GEOM	ARITH-----PERCENTILES-----								-----RANGE-----				STN GEOM	PERCENT	NO. OF TIMES	
MEAN	MEDIAN	MEAN	50	90	95	98	99	1-HR	24-HR	DEVIATION	VALID DATA	ABOVE	LIMIT	LEVEL		
20	20	21	20	32	39	43	47	7	-	85	12	-	36	1	99	0

- NOTES: 1. FLAGS FOR INVALID DATA :
- D: DYNAMIC CALIBRATION
  - T: TELEMETRY/DATALOGGR FAULT
  - M: MAINTENANCE OR ANALYZER FAULT
  - P: POWER FAILURE

THE HONGKONG ELECTRIC COMPANY, LTD.  
AIR QUALITY DATA MONTHLY TIME SERIES REPORT

STATION : VICTORIA ROAD SUBSTATION  
POLLUTANT : SULPHUR DIOXIDE

MONTH: NOVEMBER

YEAR : 2016  
UNIT : MICROGRAMS/CUBIC METER

DAY	1	2	3	4	5	6	7	8	9	10	11	12	13	14	15	16	17	18	19	20	21	22	23	24	MEAN
1	2	2	2	2	2	1	1	2	2	2	1	2	2	2	2	2	1	1	1	1	1	1	1	1	2
2	1	1	1	1	1	1	1	1	2	1	1	1	1	1	1	1	3	3	2	1	1	1	1	1	1
3	1	1	1	1	1	1	1	1	1	1	2	1	1	1	1	1	1	1	1	1	1	1	1	1	1
4	1	1	1	1	1	1	1	2	3	4	5	5	2	2	3	3	9	5	3	2	2	2	1	1	3
5	1	1	1	0	1	1	1	1	2	2	3	3	1	1	1	1	1	1	1	1	1	1	1	1	1
6	1	1	1	1	1	1	1	1	1	1	1	2	1	2	1	1	1	1	1	1	1	1	1	1	1
7	1	1	1	1	1	1	1	1	2	3	4	4	2	1	1	1	1	2	1	1	1	1	1	1	1
8	1	1	1	1	1	1	0	1	3	6	6	5	3	4	9	4	3	2	2	2	2	1	1	1	3
9	1	1	1	1	1	1	1	1	1	0	1	1	1	1	1	1	1	1	1	1	1	1	2	2	1
10	1	1	1	1	1	1	1	1	1	1	2	2	2	3	2	2	2	2	2	2	2	2	2	2	2
11	2	2	2	2	2	2	2	2	3	3	4	4	4	5	5	5	4	3	2	2	2	2	1	1	3
12	1	1	1	1	1	1	1	1	1	1	1	1	2	3	2	2	2	2	2	2	1	1	2	1	1
13	1	1	1	1	1	2	1	1	2	2	2	2	2	2	2	2	2	1	1	1	1	1	1	1	1
14	2	2	1	1	2	2	2	2	3	6	5	6	5	6	6	11	8	3	3	3	3	3	3	3	4
15	5	5	5	4	4	4	4	4	6	7	10	18	7	4	3	3	2	1	1	1	1	1	1	1	4
16	1	1	1	0	1	1	1	1	1	1	1	1	1	1	1	1	2	1	1	1	2	1	1	1	1
17	1	2	2	2	2	2	2	2	2	2	2	2	2	2	2	2	2	1	1	2	2	2	2	2	2
18	1	1	1	2	1	2	2	2	2	2	2	2	2	2	2	2	1	1	2	2	2	1	1	1	2
19	1	1	1	1	2	1	1	2	1	1	2	2	2	2	2	1	2	3	2	1	1	1	1	0	1
20	0	0	0	0	0	0	0	0	0	0	0	0	0	0	0	0	0	0	0	0	0	0	0	0	0
21	0	0	0	0	0	0	0	0	0	0	0	0	0	0	0	0	0	0	0	0	0	0	0	0	0
22	1	1	0	0	1	1	1	1	1	1	0	1	0	0	1	1	1	0	0	0	0	0	0	0	1
23	0	0	0	0	0	0	0	0	0	0	0	0	0	0	0	M	0	0	0	0	0	0	0	2	0
24	2	2	2	2	2	2	2	2	2	2	3	3	2	2	2	2	2	2	2	2	2	2	2	2	2
25	1	2	2	2	2	2	2	1	3	2	3	3	2	3	2	1	2	2	2	2	2	2	2	2	2
26	2	2	2	2	2	3	3	4	4	4	4	4	4	4	4	3	3	3	3	2	2	2	2	3	3
27	2	2	2	2	3	2	2	2	3	3	4	3	3	3	4	3	3	2	2	3	3	2	2	2	3
28	2	2	2	2	1	1	1	1	2	2	2	2	1	2	1	1	1	1	2	2	2	2	2	2	2
29	2	2	1	1	2	2	2	2	2	2	2	2	2	3	3	3	4	4	3	3	3	3	2	3	2
30	2	3	2	2	2	3	2	3	3	4	4	4	6	5	4	3	3	3	3	3	3	3	3	3	3

MONTHLY STATISTICS:

GEOM	ARITH-----PERCENTILES-----							-----RANGE-----				STN GEOM	PERCENT	NO. OF TIMES		
MEAN	MEDIAN	MEAN	50	90	95	98	99	1-HR		24-HR		DEVIATION	VALID DATA	ABOVE LIMIT LEVEL		
2	1	2	1	3	4	6	7	0	-	18	0	-	4	2	100	0

- NOTES: 1. FLAGS FOR INVALID DATA :
- D: DYNAMIC CALIBRATION
  - T: TELEMETRY/DATALOGGR FAULT
  - M: MAINTENANCE OR ANALYZER FAULT
  - P: POWER FAILURE

THE HONGKONG ELECTRIC COMPANY, LTD.  
AIR QUALITY DATA MONTHLY TIME SERIES REPORT  
MONTH: NOVEMBER

STATION : POK FU LAM  
POLLUTANT : NITROGEN DIOXIDE

YEAR : 2016  
UNIT : MICROGRAMS/CUBIC METER

DAY	1	2	3	4	5	6	7	8	9	10	11	12	13	14	15	16	17	18	19	20	21	22	23	24	MEAN
1	33	25	21	20	17	20	39	46	40	36	33	37	37	36	37	39	45	59	74	66	56	51	40	51	40
2	40	25	23	26	19	19	20	35	39	34	33	32	30	26	31	38	44	41	38	51	40	42	37	43	34
3	34	24	20	17	15	20	29	40	46	45	38	22	21	24	29	41	45	49	47	67	49	50	38	44	36
4	35	40	32	24	26	31	59	68	73	74	67	52	34	42	52	34	46	60	35	42	49	45	28	17	44
5	15	11	8	7	6	7	12	45	68	78	69	41	13	12	15	16	23	26	16	14	12	9	9	13	23
6	13	M	6	4	4	5	7	13	18	21	16	11	10	9	10	8	10	21	19	20	18	18	22	14	13
7	10	8	7	8	7	6	8	31	46	52	58	66	44	22	22	14	24	32	50	48	30	19	26	22	28
8	22	15	13	11	22	32	30	46	37	60	68	63	59	39	69	85	109	81	68	60	36	37	40	54	48
9	52	39	28	18	17	13	14	19	26	34	29	23	26	22	28	30	35	39	41	40	54	65	60	48	33
10	40	33	30	21	15	17	21	36	35	45	48	45	47	50	49	55	61	65	64	62	59	57	51	53	44
11	53	45	29	38	43	45	47	49	56	58	59	61	54	59	69	79	65	64	67	67	51	36	27	20	52
12	20	14	11	11	8	8	9	12	21	30	36	34	33	47	36	50	41	37	51	50	35	27	14	18	27
13	22	19	13	10	9	10	14	20	19	13	10	9	8	7	9	9	12	19	13	11	10	6	8	8	12
14	18	5	2	2	12	19	16	31	40	64	69	67	48	30	33	48	53	38	76	97	96	99	98	96	48
15	94	97	83	92	103	104	108	113	114	121	137	131	53	26	27	19	36	24	23	18	15	14	10	9	65
16	9	6	5	5	3	5	6	14	19	19	17	16	17	15	18	20	40	57	73	91	65	17	9	14	23
17	11	12	9	8	7	8	12	23	30	28	30	24	27	30	26	36	33	35	39	38	33	16	30	20	24
18	18	14	11	8	7	9	12	16	24	25	28	30	33	33	25	40	42	41	53	31	29	13	13	11	24
19	12	11	12	9	8	7	10	14	17	23	16	15	10	10	13	16	22	19	17	12	9	9	11	12	13
20	9	M	6	6	7	7	10	11	14	10	10	11	8	8	9	8	11	13	15	12	9	10	10	8	10
21	8	12	10	7	5	6	9	15	18	19	11	9	11	15	20	22	24	28	15	10	15	10	12	12	13
22	12	13	8	8	12	8	11	20	28	35	18	14	15	15	20	22	22	24	16	13	12	9	11	8	16
23	7	5	4	5	4	4	7	14	18	14	14	9	10	23	22	46	57	59	52	46	41	36	36	29	23
24	28	21	16	15	16	18	23	29	31	33	34	32	18	19	18	26	22	55	32	35	41	29	24	20	26
25	18	36	11	12	21	12	11	21	21	18	22	33	24	48	31	39	34	32	30	25	17	16	14	18	24
26	15	16	12	15	24	42	49	43	36	38	34	34	32	31	34	35	31	46	43	28	31	34	30	45	32
27	28	27	32	21	22	23	25	34	40	37	37	32	39	32	31	39	39	46	50	53	48	41	38	43	36
28	46	33	30	23	15	14	9	16	29	51	47	19	14	20	23	25	30	31	28	66	90	89	74	23	35
29	17	11	10	10	8	16	30	49	55	60	32	41	51	72	74	90	94	88	62	43	63	33	46	50	46
30	47	40	26	18	19	21	31	50	61	50	44	37	56	55	53	53	62	69	67	67	48	48	55	56	47

MONTHLY STATISTICS:

GEOM	ARITH-----PERCENTILES-----									-----RANGE-----				STN GEOM	PERCENT	NO. OF TIMES
MEAN	MEDIAN	MEAN	50	90	95	98	99	1-HR	24-HR	DEVIATION	VALID DATA	ABOVE	LIMIT	LEVEL		
24	26	31	26	60	69	95	104	2	-	137	10	-	65	2	100	0

NOTES: 1. FLAGS FOR INVALID DATA :  
D: DYNAMIC CALIBRATION  
T: TELEMETRY/DATALOGGR FAULT  
M: MAINTENANCE OR ANALYZER FAULT  
P: POWER FAILURE

THE HONGKONG ELECTRIC COMPANY, LTD.  
AIR QUALITY DATA MONTHLY TIME SERIES REPORT  
MONTH: NOVEMBER

STATION : POK FU LAM  
POLLUTANT : SULPHUR DIOXIDE

YEAR : 2016  
UNIT : MICROGRAMS/CUBIC METER

DAY	1	2	3	4	5	6	7	8	9	10	11	12	13	14	15	16	17	18	19	20	21	22	23	24	MEAN	
1	2	2	2	2	1	1	1	2	2	1	1	1	1	1	1	1	0	0	0	0	0	1	1	1	1	
2	1	1	1	1	1	1	1	1	2	2	1	1	1	1	0	0	0	1	1	1	0	0	1	0	1	
3	0	0	0	0	0	0	0	1	2	2	2	1	0	0	1	0	1	1	1	1	0	0	0	0	2	1
4	1	1	1	1	2	2	2	4	7	9	13	12	4	6	8	6	15	21	6	2	3	3	4	3	6	
5	3	3	4	3	2	2	2	3	5	6	13	11	2	1	1	1	1	1	1	3	5	5	5	5	4	
6	3	3	3	2	2	2	2	3	3	3	2	3	3	3	2	2	2	2	3	3	2	2	2	2	2	
7	0	1	1	1	1	0	0	0	1	17	23	39	13	0	0	0	1	0	0	0	1	0	0	0	4	
8	0	1	1	1	4	7	4	3	3	22	39	24	24	14	34	13	10	4	3	3	1	1	1	1	9	
9	2	1	1	0	0	0	0	0	1	1	1	1	1	1	0	1	1	0	0	0	4	5	5	0	1	
10	0	0	0	0	0	0	0	0	0	0	1	2	2	3	1	1	1	1	2	1	1	0	0	1	1	
11	1	1	1	2	3	4	4	5	8	9	9	9	9	12	14	12	6	2	2	1	2	2	1	2	5	
12	1	1	1	1	0	1	1	1	1	1	2	5	10	16	9	13	5	3	3	3	3	3	2	2	4	
13	1	1	1	1	1	1	2	2	2	2	2	2	1	0	1	0	0	0	0	0	0	0	0	0	1	
14	1	0	0	0	2	4	2	1	5	17	31	24	14	17	22	27	25	9	8	9	7	11	19	36	12	
15	41	29	20	16	22	16	17	23	18	26	42	57	22	13	7	4	6	3	3	1	1	2	1	2	16	
16	1	1	1	1	0	1	1	2	2	1	1	1	1	1	0	0	0	0	2	5	1	1	1	1	1	
17	1	1	2	3	2	2	1	2	1	1	1	0	0	3	3	2	2	2	2	2	3	2	3	2	2	
18	2	2	2	2	1	1	2	3	2	1	1	1	1	1	1	1	1	1	6	2	2	0	0	0	2	
19	1	0	1	1	2	2	3	3	1	2	2	3	3	2	2	3	2	2	2	1	1	2	3	2	2	
20	1	1	1	2	3	3	3	3	2	3	4	4	3	2	2	2	1	1	2	2	2	2	2	2	2	
21	1	2	2	0	0	0	0	1	2	2	1	1	2	1	0	0	0	0	1	0	1	0	1	2	1	
22	3	2	1	0	1	0	0	0	0	0	0	0	0	0	0	0	0	0	0	0	0	0	0	0	0	
23	0	0	0	0	0	0	0	0	0	0	0	0	0	0	0	0	0	0	0	0	0	0	0	0	0	
24	0	0	0	0	0	0	0	0	1	1	1	2	0	0	0	0	0	0	0	1	1	0	0	0	0	
25	0	1	0	0	0	0	0	1	1	1	1	0	4	1	0	0	0	0	0	0	0	0	0	1	1	
26	1	1	1	1	2	4	4	12	7	6	3	3	3	3	2	1	0	0	0	0	0	0	0	0	2	
27	0	0	0	0	0	0	0	0	3	4	4	3	6	5	5	2	1	0	0	1	0	0	0	0	1	
28	0	0	0	0	0	0	0	0	2	3	3	1	2	1	1	1	1	2	2	2	2	3	3	4	1	
29	4	4	3	3	3	2	3	2	4	3	2	4	2	3	3	3	7	2	1	1	1	1	1	1	3	
30	1	1	2	2	2	2	2	3	5	4	4	4	13	9	5	3	3	2	4	5	6	6	5	5	4	

MONTHLY STATISTICS:

GEOM	ARITH-----PERCENTILES-----									-----RANGE-----				STN GEOM	PERCENT	NO. OF TIMES
MEAN	MEDIAN	MEAN	50	90	95	98	99	1-HR		24-HR		DEVIATION	VALID DATA	ABOVE	LIMIT LEVEL	
2	1	3	1	6	13	24	31	0	-	57	0	-	16	3	100	0

NOTES: 1. FLAGS FOR INVALID DATA :  
D: DYNAMIC CALIBRATION  
T: TELEMETRY/DATALOGGR FAULT  
M: MAINTENANCE OR ANALYZER FAULT  
P: POWER FAILURE

THE HONGKONG ELECTRIC CO., LTD.  
AIR QUALITY DATA MONTHLY TIME SERIES REPORT

STATION: AP LEI CHAU  
POLLUTANT: NITROGEN DIOXIDE

DATE: NOVEMBER 2016  
UNIT: MICROGRAMS PER CUBIC METER

DAY\HOUR	1	2	3	4	5	6	7	8	9	10	11	12	12	14	15	16	17	18	19	20	21	22	23	24
1																								
2																								
3																								
4																								
5																								
6																								
7																								
8																								
9																								
10																								
11																								
12																								
13																								
14																								
15																								
16																								
17																								
18																								
19																								
20																								
21																								
22																								
23																								
24																								
25																								
26																								
27																								
28																								
29																								
30																								

AMBIENT AIR MONITORING AT AP LEI CHAU TEMPORARILY SUSPENDED

THE HONGKONG ELECTRIC CO., LTD.  
AIR QUALITY DATA MONTHLY TIME SERIES REPORT

STATION: AP LEI CHAU  
POLLUTANT: SULPHUR DIOXIDE

DATE: NOVEMBER 2016  
UNIT: MICROGRAMS PER CUBIC METER

DAY\HOUR	1	2	3	4	5	6	7	8	9	10	11	12	12	14	15	16	17	18	19	20	21	22	23	24
1																								
2																								
3																								
4																								
5																								
6																								
7																								
8																								
9																								
10																								
11																								
12																								
13																								
14																								
15																								
16																								
17																								
18																								
19																								
20																								
21																								
22																								
23																								
24																								
25																								
26																								
27																								
28																								
29																								
30																								

AMBIENT AIR MONITORING AT AP LEI CHAU TEMPORARILY SUSPENDED

THE HONGKONG ELECTRIC COMPANY, LTD.  
AIR QUALITY DATA MONTHLY TIME SERIES REPORT  
MONTH: NOVEMBER

STATION : CHEUNG CHAU  
POLLUTANT : NITROGEN DIOXIDE

YEAR : 2016  
UNIT : MICROGRAMS/CUBIC METER

DAY	1	2	3	4	5	6	7	8	9	10	11	12	13	14	15	16	17	18	19	20	21	22	23	24	MEAN
1	50	33	23	19	20	24	24	23	28	28	25	27	29	31	31	35	40	47	51	59	55	43	53	44	35
2	36	M	29	29	23	27	29	31	26	29	34	32	38	33	33	29	31	33	43	36	31	34	35	31	32
3	27	25	19	18	15	17	21	22	24	32	30	38	35	34	32	30	29	35	59	38	42	47	46	40	31
4	27	23	22	19	25	28	40	39	36	31	49	41	38	54	49	44	49	38	43	35	41	34	26	14	35
5	29	49	40	41	43	64	60	56	41	64	72	53	5	1	0	1	4	9	12	8	3	4	3	9	28
6	14	11	8	8	9	29	51	59	60	58	31	4	3	2	2	1	2	8	9	6	8	13	9	10	17
7	12	10	12	12	19	26	8	43	59	39	39	22	14	0	0	0	0	1	10	9	16	14	5	3	16
8	10	15	23	29	14	37	46	55	49	41	39	38	7	7	9	79	77	73	65	53	36	41	38	36	38
9	35	27	27	31	17	24	30	33	43	55	60	53	48	45	57	49	70	70	77	78	78	65	50	53	49
10	38	31	21	18	22	33	33	23	25	31	34	48	45	53	56	59	61	69	70	68	64	65	55	51	45
11	46	53	46	46	33	32	37	39	39	43	50	61	M	M	M	95	106	80	34	59	80	104	54	14	55
12	18	22	18	13	17	24	69	26	32	29	25	26	19	8	6	8	8	11	33	31	57	41	30	22	25
13	17	21	26	17	15	14	30	28	22	25	13	9	7	9	6	8	7	7	9	13	35	50	53	41	20
14	22	9	24	37	41	53	68	73	71	50	28	7	3	5	3	29	38	43	28	9	21	26	109	99	37
15	92	63	54	53	32	50	92	116	112	122	119	103	103	35	22	13	8	8	9	7	7	7	6	5	52
16	10	M	14	8	0	2	2	12	9	10	7	6	9	8	14	3	4	2	7	5	5	3	4	6	7
17	9	13	14	11	7	7	7	18	23	41	53	47	53	9	8	6	8	8	15	27	34	114	42	12	24
18	17	14	17	10	16	17	10	9	17	16	46	12	27	21	12	12	6	20	62	74	16	14	26	11	21
19	14	14	19	20	23	25	24	22	32	41	18	12	4	5	4	19	21	22	20	15	10	8	15	20	18
20	7	9	13	14	20	14	17	27	24	17	18	22	16	23	21	9	11	14	12	17	8	13	12	9	15
21	15	24	20	13	11	14	13	22	16	17	8	6	9	13	9	12	14	12	12	10	17	25	23	23	15
22	28	20	12	16	27	16	17	23	32	32	38	24	22	14	12	14	21	20	20	27	64	16	11	41	24
23	37	26	31	29	31	49	39	45	47	27	35	28	24	62	62	65	66	58	49	42	39	32	30	30	41
24	24	19	19	17	16	17	19	22	25	31	27	29	33	43	48	52	66	68	71	62	60	53	49	48	38
25	41	41	43	30	27	32	36	37	35	41	41	45	48	52	62	59	34	37	29	22	37	22	15	21	37
26	34	57	56	52	36	53	51	51	44	46	44	36	32	31	29	34	42	47	48	47	34	32	33	34	42
27	29	32	33	30	29	31	33	34	32	33	33	33	43	45	51	54	56	57	46	50	45	40	44	38	40
28	37	30	24	21	27	18	29	40	51	46	47	53	38	28	16	18	18	18	19	53	56	57	53	52	35
29	54	42	40	29	26	25	45	46	44	60	62	72	77	76	86	95	113	114	118	90	94	73	77	73	68
30	69	M	73	46	35	39	49	52	36	34	41	46	42	63	73	72	64	73	58	53	61	70	58	42	54

MONTHLY STATISTICS:

GEOM	ARITH-----PERCENTILES-----										RANGE-----				STN GEOM	PERCENT	NO. OF TIMES
MEAN	MEDIAN	MEAN	50	90	95	98	99	1-HR	24-HR	DEVIATION	VALID DATA	ABOVE	LIMIT	LEVEL			
25	30	33	30	62	73	95	112	0	-	122	7	-	68	2	99	0	

- NOTES: 1. FLAGS FOR INVALID DATA :
- D: DYNAMIC CALIBRATION
  - T: TELEMETRY/DATALOGGR FAULT
  - M: MAINTENANCE OR ANALYZER FAULT
  - P: POWER FAILURE

THE HONGKONG ELECTRIC COMPANY, LTD.  
AIR QUALITY DATA MONTHLY TIME SERIES REPORT  
MONTH: NOVEMBER

STATION : CHEUNG CHAU  
POLLUTANT : SULPHUR DIOXIDE

YEAR : 2016  
UNIT : MICROGRAMS/CUBIC METER

DAY	1	2	3	4	5	6	7	8	9	10	11	12	13	14	15	16	17	18	19	20	21	22	23	24	MEAN
1	0	0	0	0	0	0	0	0	0	0	0	0	0	0	0	0	0	0	0	0	0	0	0	0	0
2	0	0	0	0	0	0	0	1	0	0	0	0	0	0	0	0	0	0	0	0	0	0	0	0	0
3	0	0	0	0	0	0	0	0	0	1	0	0	0	0	0	0	0	0	0	0	0	0	0	0	0
4	0	0	0	0	0	0	0	0	0	0	0	0	0	2	2	2	5	4	11	6	5	2	0	1	2
5	0	0	0	0	0	1	0	0	0	6	11	5	0	0	0	0	0	1	2	2	0	0	0	3	1
6	3	2	0	0	0	0	0	0	4	4	2	0	0	0	0	0	0	0	0	0	0	0	0	1	1
7	1	0	1	0	0	0	0	0	1	0	4	2	1	0	0	0	0	0	0	1	1	0	0	1	1
8	0	1	0	0	0	0	0	2	2	0	2	3	2	2	3	8	1	0	0	0	0	0	0	0	1
9	0	0	0	0	0	0	0	0	0	0	0	0	0	0	0	0	0	0	0	0	0	0	0	0	0
10	0	0	0	0	0	0	0	0	0	0	0	0	0	0	0	0	0	0	0	0	0	0	0	0	0
11	0	0	0	0	0	0	0	0	0	0	0	0	M	M	M	5	6	2	0	0	0	1	1	1	1
12	0	0	1	0	0	0	1	1	3	3	2	8	6	4	3	5	3	2	1	2	4	2	3	3	2
13	1	2	4	3	1	0	5	5	4	5	4	3	2	3	1	1	0	0	0	0	1	2	3	2	2
14	0	0	0	0	1	0	0	4	6	5	2	0	0	0	0	11	8	8	2	1	2	1	2	3	2
15	2	1	1	1	2	3	5	7	9	9	8	11	30	18	11	6	4	2	0	0	1	0	0	1	6
16	0	0	2	0	0	0	0	4	1	2	1	3	5	1	4	1	0	0	0	0	0	0	0	1	1
17	1	1	3	2	0	0	0	1	2	0	1	2	0	0	2	2	2	1	1	2	2	4	2	2	1
18	3	3	3	0	3	3	1	2	6	2	3	1	2	1	2	2	0	1	0	0	2	1	2	3	2
19	2	2	1	0	2	3	2	1	0	3	5	6	3	3	2	9	6	4	2	2	1	1	2	5	3
20	1	2	0	1	6	3	3	7	8	6	9	13	7	9	6	1	1	1	1	2	0	1	1	2	4
21	2	3	3	1	0	1	1	5	5	9	2	0	2	4	0	1	1	1	2	0	0	2	3	5	2
22	5	1	0	0	1	0	0	0	0	0	1	0	0	0	0	0	0	0	0	0	0	0	0	1	0
23	0	0	0	0	0	0	0	0	0	0	0	0	0	0	0	0	0	0	0	0	0	0	0	0	0
24	0	0	0	0	0	0	0	0	0	0	0	0	0	0	0	0	0	0	0	0	0	0	0	0	0
25	0	0	0	0	0	0	0	0	0	0	0	0	0	0	1	2	7	5	3	1	8	4	1	5	2
26	0	0	0	1	0	0	0	1	2	2	4	2	1	1	0	0	0	0	0	0	0	0	0	0	1
27	0	0	0	0	0	0	0	0	0	0	0	0	1	0	0	0	0	0	0	1	0	0	0	1	0
28	0	0	0	0	0	0	0	1	1	2	2	3	1	0	0	1	0	0	0	0	0	0	1	3	1
29	2	2	2	1	1	0	2	2	1	1	1	2	2	1	2	2	3	2	3	0	1	0	0	3	2
30	2	1	0	0	0	0	0	1	2	3	3	3	2	3	5	4	2	3	2	3	4	4	3	5	2

MONTHLY STATISTICS:

GEOM	ARITH-----PERCENTILES-----							-----RANGE-----				STN GEOM	PERCENT	NO. OF TIMES		
MEAN	MEDIAN	MEAN	50	90	95	98	99	1-HR	24-HR	DEVIATION	VALID DATA	ABOVE	LIMIT	LEVEL		
2	0	1	0	4	6	8	11	0	-	30	0	-	6	2	100	0

NOTES: 1. FLAGS FOR INVALID DATA :  
D: DYNAMIC CALIBRATION  
T: TELEMETRY/DATALOGGR FAULT  
M: MAINTENANCE OR ANALYZER FAULT  
P: POWER FAILURE

THE HONGKONG ELECTRIC COMPANY, LTD.  
AIR QUALITY DATA MONTHLY TIME SERIES REPORT  
MONTH: DECEMBER

STATION : VICTORIA PEAK  
POLLUTANT : NITROGEN DIOXIDE

YEAR : 2016  
UNIT : MICROGRAMS/CUBIC METER

DAY	1	2	3	4	5	6	7	8	9	10	11	12	13	14	15	16	17	18	19	20	21	22	23	24	MEAN
1	32	28	17	10	17	16	37	60	58	70	59	32	35	33	27	33	57	79	66	62	63	64	47	12	42
2	18	14	9	7	6	8	9	30	42	46	37	28	20	24	41	55	58	71	57	59	25	22	11	7	29
3	4	0	1	1	2	6	13	18	25	29	29	38	35	36	54	67	85	122	124	115	87	51	28	1	40
4	6	7	0	2	0	0	2	27	25	43	38	52	62	59	92	106	84	93	99	116	121	105	75	79	54
5	91	86	56	70	65	31	39	54	72	40	20	22	20	25	33	69	73	80	105	158	101	51	26	25	59
6	17	6	4	4	3	4	12	29	43	43	41	M	21	29	32	52	65	74	77	74	54	45	52	39	36
7	31	24	16	11	11	9	29	48	78	73	62	43	52	58	58	66	72	49	75	119	152	92	58	33	55
8	36	22	25	26	21	15	18	45	65	50	70	32	17	13	9	19	39	80	93	107	94	68	52	43	44
9	57	57	39	40	22	16	15	37	60	53	24	14	6	7	9	9	6	15	28	23	11	5	0	1	23
10	0	0	0	0	0	3	17	27	32	38	26	28	31	40	33	60	79	89	36	20	12	8	3	0	24
11	0	0	0	0	0	0	2	2	4	3	1	1	1	0	0	0	0	0	2	0	0	0	0	0	1
12	0	0	0	0	0	0	2	9	3	8	20	9	1	6	6	3	3	6	1	6	0	0	0	0	3
13	1	0	0	0	0	0	0	0	34	39	22	19	26	20	27	48	65	119	149	146	117	74	72	77	44
14	55	35	19	5	7	0	6	25	43	50	42	48	44	36	36	48	56	58	49	53	46	38	37	39	36
15	33	25	14	14	13	9	16	33	42	40	44	34	33	23	37	33	45	57	59	62	48	37	34	32	34
16	27	19	15	13	12	9	17	38	33	28	23	21	18	19	18	31	36	50	49	51	53	54	55	40	30
17	33	16	10	9	7	7	12	19	26	32	M	30	24	41	64	52	29	20	26	21	26	10	5	8	23
18	9	7	5	7	9	7	9	15	18	9	10	6	0	0	1	2	4	1	4	19	21	12	11	5	8
19	2	1	0	0	0	0	0	0	2	7	8	14	16	12	29	16	11	27	12	7	12	10	1	4	8
20	4	8	3	7	3	4	5	9	16	42	47	51	22	8	11	4	10	12	8	13	11	9	1	0	13
21	0	0	0	0	0	0	0	1	10	14	7	7	11	8	14	10	19	22	30	18	18	23	11	47	11
22	45	32	2	1	7	16	20	20	30	24	29	26	33	35	37	27	43	59	69	41	49	31	43	77	33
23	64	22	25	8	1	2	7	14	29	32	26	23	19	20	28	20	35	68	44	13	7	1	0	3	21
24	1	0	0	0	0	0	3	7	17	17	17	17	18	16	17	20	33	26	18	12	14	7	2	2	11
25	2	1	0	0	1	0	3	0	1	0	0	1	1	5	2	1	0	0	8	7	1	4	4	4	2
26	3	4	2	0	0	0	0	5	5	4	6	13	7	24	35	42	58	82	68	56	84	77	62	53	29
27	44	35	29	22	13	11	11	14	13	13	15	17	18	16	14	17	23	22	35	27	22	17	15	28	20
28	26	M	12	12	10	12	18	32	42	51	50	43	38	41	54	58	61	71	74	71	55	46	36	30	41
29	24	19	11	9	8	12	19	30	43	50	44	48	53	43	37	47	68	76	66	74	60	53	56	49	42
30	37	14	11	9	8	10	23	42	54	61	65	63	54	59	71	77	97	122	130	122	91	37	31	23	55
31	14	8	7	9	5	4	13	30	43	28	23	21	21	33	42	63	93	87	49	23	11	13	13	8	28

MONTHLY STATISTICS:

GEOM	ARITH ----- PERCENTILES -----								----- RANGE -----				STN GEOM	PERCENT	NO. OF TIMES	
MEAN	MEDIAN	MEAN	50	90	95	98	99	1-HR	24-HR	DEVIATION	VALID DATA	ABOVE	LIMIT	LEVEL		
20	21	29	21	68	82	109	122	0	-	158	1	-	59	3	100	0

- NOTES: 1. FLAGS FOR INVALID DATA :
- D: DYNAMIC CALIBRATION
  - T: TELEMETRY/DATALOGGR FAULT
  - M: MAINTENANCE OR ANALYZER FAULT
  - P: POWER FAILURE

THE HONGKONG ELECTRIC COMPANY, LTD.  
AIR QUALITY DATA MONTHLY TIME SERIES REPORT  
MONTH: DECEMBER

STATION : VICTORIA PEAK  
POLLUTANT : SULPHUR DIOXIDE

YEAR : 2016  
UNIT : MICROGRAMS/CUBIC METER

DAY	1	2	3	4	5	6	7	8	9	10	11	12	13	14	15	16	17	18	19	20	21	22	23	24	MEAN
1	4	4	4	3	3	4	3	4	5	6	5	4	4	4	4	4	4	4	4	5	5	5	5	4	4
2	3	3	2	2	3	2	2	2	4	4	4	3	3	3	3	3	3	3	4	4	4	4	3	3	3
3	4	4	3	4	4	4	5	5	5	8	6	6	5	5	4	5	9	12	15	11	6	7	6	4	6
4	3	3	2	2	1	0	0	1	2	2	3	7	10	7	26	26	22	17	19	26	22	16	12	13	10
5	14	14	10	12	11	6	6	8	9	5	4	3	3	3	8	35	32	19	15	14	10	6	5	5	11
6	5	5	5	4	3	3	4	4	7	5	4	M	3	4	4	5	5	6	6	7	6	6	6	6	5
7	5	5	6	6	6	6	7	7	13	9	7	7	9	22	13	14	19	13	20	22	19	9	8	7	11
8	6	6	6	5	5	6	7	7	10	7	8	6	5	5	5	5	4	4	4	4	6	5	24	4	6
9	4	4	4	4	4	4	4	3	5	5	4	4	4	2	1	2	3	2	3	3	3	3	2	4	3
10	3	3	3	3	3	5	4	4	4	5	5	5	4	4	4	5	5	4	5	7	4	3	4	3	4
11	2	2	1	2	1	1	3	2	3	2	2	3	3	2	1	1	1	1	1	0	0	0	0	1	1
12	2	1	1	1	1	1	2	2	1	1	2	2	1	2	1	1	0	1	1	2	2	1	1	1	1
13	1	0	0	0	0	0	0	0	3	4	3	2	2	2	3	11	9	9	9	8	11	5	3	2	4
14	2	2	3	1	1	1	1	1	3	2	1	2	3	2	1	2	2	2	2	4	2	4	1	2	2
15	2	2	1	1	1	1	1	1	2	3	3	3	2	2	2	2	2	3	3	4	3	2	2	2	2
16	2	2	2	3	3	4	4	4	4	4	4	3	4	3	3	4	3	3	3	3	3	3	3	2	3
17	3	3	4	4	4	3	4	4	5	5	M	5	4	4	3	3	2	3	3	3	5	3	11	3	4
18	3	4	3	3	4	3	3	3	3	2	2	1	1	1	1	2	2	2	2	1	3	2	2	3	2
19	3	4	3	3	3	2	3	3	3	3	3	4	5	5	5	4	3	3	3	3	3	3	5	4	3
20	3	3	5	5	4	5	4	4	6	5	5	5	5	6	4	4	3	2	2	3	4	4	3	3	4
21	3	3	3	3	2	2	3	3	2	1	2	1	1	0	1	1	1	1	1	1	2	1	1	1	2
22	1	0	0	0	0	0	0	0	2	2	2	2	1	1	1	1	1	1	1	2	2	1	1	2	1
23	1	1	1	1	1	1	1	1	1	1	1	0	1	1	2	3	3	3	3	3	2	2	1	2	2
24	2	1	1	1	2	2	3	3	4	4	4	4	5	4	5	4	3	4	4	4	4	4	4	4	3
25	4	2	3	2	2	3	4	3	5	4	4	4	4	3	2	1	1	2	2	2	2	1	1	1	3
26	1	1	1	1	2	1	1	2	2	4	3	4	3	4	9	8	12	11	9	10	16	13	9	5	6
27	6	4	3	1	1	0	0	0	1	1	2	1	1	1	1	2	2	1	2	2	1	1	1	2	2
28	2	2	3	3	4	4	3	3	6	6	5	4	3	4	4	3	3	3	5	6	5	4	3	4	4
29	3	2	2	3	3	4	4	4	5	5	5	5	6	6	5	4	4	5	4	6	5	5	5	5	4
30	4	4	4	4	4	4	4	5	8	6	7	7	6	6	6	6	6	7	7	7	6	5	5	5	6
31	3	3	3	3	3	3	4	6	7	8	6	5	5	5	9	13	9	5	4	4	2	2	1	2	5

MONTHLY STATISTICS:

GEOM	ARITH-----PERCENTILES-----										RANGE-----		STN GEOM	PERCENT	NO. OF TIMES	
MEAN	MEDIAN	MEAN	50	90	95	98	99	1-HR	24-HR	DEVIATION	VALID DATA	ABOVE	LIMIT	LEVEL		
3	3	4	3	7	11	17	22	0	-	35	1	-	11	2	100	0

NOTES: 1. FLAGS FOR INVALID DATA :  
D: DYNAMIC CALIBRATION  
T: TELEMETRY/DATALOGGR FAULT  
M: MAINTENANCE OR ANALYZER FAULT  
P: POWER FAILURE

THE HONGKONG ELECTRIC COMPANY, LTD.  
AIR QUALITY DATA MONTHLY TIME SERIES REPORT

STATION : CHUNG HOM KOK ZONE SUBSTATION  
POLLUTANT : NITROGEN DIOXIDE

MONTH: DECEMBER

YEAR : 2016

UNIT : MICROGRAMS/CUBIC METER

DAY	1	2	3	4	5	6	7	8	9	10	11	12	13	14	15	16	17	18	19	20	21	22	23	24	MEAN
1	21	15	10	9	12	8	5	8	10	11	7	6	6	8	14	13	13	18	25	25	17	12	14	10	12
2	4	8	10	8	8	7	7	12	15	11	9	9	8	9	11	14	17	12	8	8	8	8	7	7	9
3	6	4	3	3	5	6	11	14	13	15	14	10	11	12	13	11	15	26	12	10	11	14	9	6	11
4	4	2	1	1	3	2	3	9	18	37	65	66	80	71	29	24	15	17	25	19	14	28	36	30	25
5	56	72	73	101	115	114	110	84	45	19	19	11	10	8	7	12	14	15	15	27	11	13	10	9	40
6	5	0	0	0	0	0	1	4	7	10	9	2	2	2	3	6	18	15	10	7	8	7	6	12	6
7	10	9	8	7	6	6	9	10	15	14	13	17	13	12	12	18	17	19	48	55	37	26	13	12	17
8	13	10	7	7	8	4	4	9	14	11	14	10	8	7	6	8	8	13	10	10	11	10	12	12	9
9	10	9	10	9	7	7	6	10	13	12	10	7	4	2	3	5	6	5	4	5	7	5	3	5	7
10	3	5	3	2	3	4	10	13	17	15	7	8	9	9	13	29	10	18	8	10	7	8	7	3	9
11	1	0	0	0	0	0	2	1	2	1	1	1	1	0	0	1	2	2	1	0	0	0	0	1	1
12	2	0	1	0	0	0	2	5	11	6	2	2	1	0	0	1	1	2	1	3	2	2	0	0	2
13	0	0	0	0	8	10	3	9	16	14	8	8	5	3	7	10	11	43	44	19	17	9	9	18	11
14	59	M	1	0	0	0	0	6	10	5	5	9	48	28	19	23	18	15	14	9	7	7	8	20	14
15	19	8	5	6	5	3	5	8	17	11	8	9	7	8	9	14	10	16	23	17	12	9	6	9	10
16	6	5	4	4	5	4	5	10	9	9	9	9	8	6	5	7	8	8	15	19	20	18	9	13	9
17	14	14	11	7	7	8	11	13	15	15	12	11	11	16	14	14	11	9	6	8	9	6	6	4	11
18	2	2	4	7	10	7	7	5	7	5	5	7	8	7	7	9	13	9	3	4	7	4	3	4	6
19	3	1	0	0	1	0	2	6	7	5	6	2	4	3	4	3	4	0	1	5	5	5	4	3	3
20	1	1	2	3	4	4	3	6	6	13	12	9	10	4	3	5	2	1	1	3	3	4	4	0	4
21	0	0	1	0	0	0	0	1	1	2	0	0	0	0	0	0	0	2	3	3	1	9	15	57	4
22	52	55	55	51	48	35	18	12	9	14	23	19	39	38	43	36	34	19	21	10	7	6	12	11	28
23	13	5	2	1	1	1	1	5	5	5	4	4	3	1	4	9	8	10	12	3	2	2	1	2	4
24	1	0	0	0	0	0	0	2	3	3	4	5	5	5	5	4	8	9	10	10	7	5	4	5	4
25	3	2	2	2	4	5	4	5	5	5	6	T	T	T	T	T	T	T	T	T	T	T	T	T	T
26	T	T	T	T	T	T	T	T	T	T	T	T	T	T	T	T	T	T	T	T	T	T	T	T	T
27	T	T	T	T	T	T	T	T	T	T	T	T	T	T	T	T	T	T	T	T	T	T	T	T	T
28	T	T	T	T	T	T	T	T	T	T	T	T	T	T	T	T	T	T	T	T	T	T	T	T	T
29	T	T	T	T	T	T	T	T	T	T	T	14	9	3	4	6	11	15	14	14	18	12	8	11	
30	12	10	9	9	10	9	9	12	17	18	19	18	15	17	24	27	30	45	50	28	13	11	9	8	18
31	6	5	7	7	5	6	11	18	19	15	7	7	7	8	8	10	9	10	10	5	4	4	5	0	8

MONTHLY STATISTICS:

GEOM	ARITH-----PERCENTILES-----							-----RANGE-----				STN GEOM	PERCENT	NO. OF TIMES		
MEAN	MEDIAN	MEAN	50	90	95	98	99	1-HR	24-HR	DEVIATION	VALID DATA	ABOVE	LIMIT	LEVEL		
8	8	11	8	19	36	56	73	0	-	115	1	-	40	3	87	0

NOTES:

1. FLAGS FOR INVALID DATA :
  - D: DYNAMIC CALIBRATION
  - T: TELEMETRY/DATALOGGR FAULT
  - M: MAINTENANCE OR ANALYZER FAULT
  - P: POWER FAILURE

THE HONGKONG ELECTRIC COMPANY, LTD.  
AIR QUALITY DATA MONTHLY TIME SERIES REPORT

STATION : CHUNG HOM KOK ZONE SUBSTATION  
POLLUTANT : SULPHUR DIOXIDE

MONTH: DECEMBER

YEAR : 2016

UNIT : MICROGRAMS/CUBIC METER

DAY	1	2	3	4	5	6	7	8	9	10	11	12	13	14	15	16	17	18	19	20	21	22	23	24	MEAN
1	4	4	3	3	3	3	3	3	3	3	2	2	2	3	3	3	3	3	4	5	5	4	5	2	3
2	1	1	2	2	2	2	2	3	3	4	4	3	2	2	2	2	3	3	3	3	3	2	2	4	3
3	5	4	4	5	5	6	6	6	7	8	7	7	6	6	6	6	6	7	6	7	7	9	6	5	6
4	5	4	4	4	3	3	3	2	3	11	40	52	40	45	17	10	7	8	7	7	8	9	10	23	14
5	16	18	17	29	81	80	86	47	16	8	7	7	6	5	4	7	7	5	3	3	7	7	5	5	20
6	6	5	6	5	5	5	5	5	4	4	4	4	4	3	4	4	4	5	5	5	6	7	7	7	5
7	7	8	8	8	8	8	8	8	8	8	8	8	8	8	7	7	6	7	11	10	9	10	9	8	8
8	7	7	6	5	6	8	7	8	7	7	7	6	6	6	4	4	5	4	5	5	6	8	8	8	6
9	7	8	9	7	6	6	5	6	6	6	6	5	6	2	2	3	2	2	3	4	4	2	2	2	5
10	3	3	2	2	3	3	3	4	5	6	5	4	4	4	4	4	3	4	4	4	2	3	3	2	4
11	1	2	1	1	1	1	3	3	3	2	3	3	3	2	1	1	1	1	0	1	1	1	0	0	2
12	1	0	1	0	1	0	1	1	1	1	1	1	1	0	0	0	0	1	1	1	2	2	2	4	1
13	3	3	2	1	3	5	4	6	5	4	5	4	3	3	3	4	2	17	16	3	3	2	1	1	4
14	9	3	2	1	1	0	0	1	1	1	1	1	24	7	4	3	2	2	2	2	3	2	2	2	3
15	2	2	1	1	1	1	1	2	1	2	2	2	2	2	2	2	2	2	3	3	3	3	2	2	2
16	2	2	3	2	3	3	4	4	4	5	5	4	5	4	3	3	3	4	4	4	5	4	4	4	4
17	4	4	5	5	5	4	5	5	5	5	5	4	4	4	4	4	3	3	3	4	5	3	3	4	4
18	3	3	4	5	5	4	5	4	4	3	3	3	4	2	3	2	3	1	1	2	4	3	3	2	3
19	4	3	3	2	2	2	3	3	3	3	3	3	5	5	3	3	2	1	2	3	3	3	3	3	3
20	3	4	5	5	6	5	4	5	5	5	6	7	9	7	5	5	2	2	2	4	3	3	3	3	5
21	3	4	4	3	2	3	3	4	2	2	1	1	1	1	1	1	1	1	2	1	1	2	2	9	2
22	6	3	5	7	2	1	0	1	1	1	5	2	15	8	19	12	11	1	1	1	1	0	1	1	4
23	1	1	1	1	2	1	1	2	1	1	1	2	2	1	3	3	3	2	3	3	2	2	1	3	2
24	2	2	2	3	3	4	4	4	5	5	5	5	6	6	5	5	5	5	5	5	5	5	5	4	4
25	2	2	2	3	4	4	4	5	5	6	4	T	T	T	T	T	T	T	T	T	T	T	T	T	T
26	T	T	T	T	T	T	T	T	T	T	T	T	T	T	T	T	T	T	T	T	T	T	T	T	T
27	T	T	T	T	T	T	T	T	T	T	T	T	T	T	T	T	T	T	T	T	T	T	T	T	T
28	T	T	T	T	T	T	T	T	T	T	T	T	T	T	T	T	T	T	T	T	T	T	T	T	T
29	T	T	T	T	T	T	T	T	T	T	T	4	4	4	4	4	4	4	5	5	6	6	6	5	5
30	5	5	5	5	5	5	5	6	6	6	6	7	7	6	6	5	4	5	6	5	6	5	5	4	5
31	3	3	4	3	2	3	5	6	7	8	6	5	5	5	5	4	4	3	2	2	1	1	2	2	4

MONTHLY STATISTICS:

GEOM	ARITH-----PERCENTILES-----										RANGE-----		STN GEOM	PERCENT	NO. OF TIMES	
MEAN	MEDIAN	MEAN	50	90	95	98	99	1-HR		24-HR		DEVIATION	VALID DATA	ABOVE	LIMIT	LEVEL
4	4	5	4	7	9	17	40	0	-	86	1	-	20	2	87	0

NOTES:

1. FLAGS FOR INVALID DATA :
  - D: DYNAMIC CALIBRATION
  - T: TELEMETRY/DATALOGGR FAULT
  - M: MAINTENANCE OR ANALYZER FAULT
  - P: POWER FAILURE

THE HONGKONG ELECTRIC COMPANY, LTD.  
AIR QUALITY DATA MONTHLY TIME SERIES REPORT

STATION : CHUNG HOM KOK ZONE SUBSTATION  
POLLUTANT : SULPHUR DIOXIDE

MONTH: DECEMBER

YEAR : 2016

UNIT : MICROGRAMS/CUBIC METER

DAY	1	2	3	4	5	6	7	8	9	10	11	12	13	14	15	16	17	18	19	20	21	22	23	24	MEAN
1	4	4	3	3	3	3	3	3	3	3	2	2	2	3	3	3	3	3	4	5	5	4	5	2	3
2	1	1	2	2	2	2	2	3	3	4	4	3	2	2	2	2	3	3	3	3	3	2	2	4	3
3	5	4	4	5	5	6	6	6	7	8	7	7	6	6	6	6	6	7	6	7	7	9	6	5	6
4	5	4	4	4	3	3	3	2	3	11	40	52	40	45	17	10	7	8	7	7	8	9	10	23	14
5	16	18	17	29	81	80	86	47	16	8	7	7	6	5	4	7	7	5	3	3	7	7	5	5	20
6	6	5	6	5	5	5	5	5	4	4	4	4	4	3	4	4	4	5	5	5	6	7	7	7	5
7	7	8	8	8	8	8	8	8	8	8	8	8	8	8	7	7	6	7	11	10	9	10	9	8	8
8	7	7	6	5	6	8	7	8	7	7	7	6	6	6	4	4	5	4	5	5	6	8	8	8	6
9	7	8	9	7	6	6	5	6	6	6	6	5	6	2	2	3	2	2	3	4	4	2	2	2	5
10	3	3	2	2	3	3	3	4	5	6	5	4	4	4	4	4	3	4	4	4	2	3	3	2	4
11	1	2	1	1	1	1	3	3	3	2	3	3	3	2	1	1	1	1	0	1	1	1	0	0	2
12	1	0	1	0	1	0	1	1	1	1	1	1	1	0	0	0	0	1	1	1	2	2	2	4	1
13	3	3	2	1	3	5	4	6	5	4	5	4	3	3	3	4	2	17	16	3	3	2	1	1	4
14	9	3	2	1	1	0	0	1	1	1	1	1	24	7	4	3	2	2	2	2	3	2	2	2	3
15	2	2	1	1	1	1	1	2	1	2	2	2	2	2	2	2	2	2	3	3	3	3	2	2	2
16	2	2	3	2	3	3	4	4	4	5	5	4	5	4	3	3	3	4	4	4	5	4	4	4	4
17	4	4	5	5	5	4	5	5	5	5	5	4	4	4	4	4	3	3	3	4	5	3	3	4	4
18	3	3	4	5	5	4	5	4	4	3	3	3	4	2	3	2	3	1	1	2	4	3	3	2	3
19	4	3	3	2	2	2	3	3	3	3	3	3	5	5	3	3	2	1	2	3	3	3	3	3	3
20	3	4	5	5	6	5	4	5	5	5	6	7	9	7	5	5	2	2	2	4	3	3	3	3	5
21	3	4	4	3	2	3	3	4	2	2	1	1	1	1	1	1	1	1	2	1	1	2	2	9	2
22	6	3	5	7	2	1	0	1	1	1	5	2	15	8	19	12	11	1	1	1	1	0	1	1	4
23	1	1	1	1	2	1	1	2	1	1	1	2	2	1	3	3	3	2	3	3	2	2	1	3	2
24	2	2	2	3	3	4	4	4	5	5	5	5	6	6	5	5	5	5	5	5	5	5	5	4	4
25	2	2	2	3	4	4	4	5	5	6	4	T	T	T	T	T	T	T	T	T	T	T	T	T	T
26	T	T	T	T	T	T	T	T	T	T	T	T	T	T	T	T	T	T	T	T	T	T	T	T	T
27	T	T	T	T	T	T	T	T	T	T	T	T	T	T	T	T	T	T	T	T	T	T	T	T	T
28	T	T	T	T	T	T	T	T	T	T	T	T	T	T	T	T	T	T	T	T	T	T	T	T	T
29	T	T	T	T	T	T	T	T	T	T	T	4	4	4	4	4	4	4	5	5	6	6	6	5	5
30	5	5	5	5	5	5	5	6	6	6	6	7	7	6	6	5	4	5	6	5	6	5	5	4	5
31	3	3	4	3	2	3	5	6	7	8	6	5	5	5	5	4	4	3	2	2	1	1	2	2	4

MONTHLY STATISTICS:

GEOM	ARITH-----PERCENTILES-----										RANGE-----		STN GEOM	PERCENT	NO. OF TIMES	
MEAN	MEDIAN	MEAN	50	90	95	98	99	1-HR	24-HR	DEVIATION	VALID DATA	ABOVE	LIMIT	LEVEL		
4	4	5	4	7	9	17	40	0	-	86	1	-	20	2	87	0

NOTES:

1. FLAGS FOR INVALID DATA :  
 D: DYNAMIC CALIBRATION  
 T: TELEMETRY/DATALOGGR FAULT  
 M: MAINTENANCE OR ANALYZER FAULT  
 P: POWER FAILURE

THE HONGKONG ELECTRIC COMPANY, LTD.  
AIR QUALITY DATA MONTHLY TIME SERIES REPORT  
MONTH: DECEMBER

STATION : VICTORIA ROAD SUBSTATION  
POLLUTANT : NITROGEN DIOXIDE

YEAR : 2016  
UNIT : MICROGRAMS/CUBIC METER

DAY	1	2	3	4	5	6	7	8	9	10	11	12	13	14	15	16	17	18	19	20	21	22	23	24	MEAN
1	24	26	18	18	24	27	28	30	34	37	38	37	39	41	38	48	48	45	47	41	32	35	35	27	34
2	24	23	22	21	21	20	21	27	31	32	29	28	28	32	38	52	70	72	45	40	33	30	30	25	33
3	26	24	23	22	21	21	24	25	27	29	28	29	32	37	42	40	62	64	61	53	54	45	36	27	36
4	26	23	21	20	18	17	19	24	30	30	32	39	49	61	69	71	56	47	42	45	46	47	45	45	38
5	45	45	48	46	43	41	39	42	48	53	46	51	37	49	51	59	45	41	56	53	47	41	30	29	45
6	26	22	20	18	17	17	20	25	28	29	30	32	30	31	32	41	43	45	40	37	32	29	29	28	29
7	28	23	20	19	20	19	24	28	34	38	40	41	42	45	49	52	46	44	44	39	45	55	45	36	37
8	33	30	30	28	26	25	28	32	40	39	44	44	39	35	35	43	48	44	49	56	61	47	40	33	39
9	32	31	32	27	22	19	22	27	33	33	31	29	26	26	26	29	28	35	33	31	29	26	24	24	28
10	26	27	25	26	26	23	25	27	33	29	31	32	33	39	38	39	48	48	47	42	37	34	34	32	33
11	29	28	26	26	25	24	26	27	26	27	25	24	26	24	27	25	25	27	26	26	25	24	25	25	26
12	24	24	23	23	23	22	24	28	28	32	30	28	28	27	26	27	28	29	29	28	28	25	34	39	27
13	34	33	30	33	28	20	27	33	34	33	36	38	36	34	35	40	47	46	48	56	63	63	63	57	40
14	52	M	29	25	26	25	27	29	34	35	M	M	40	47	54	50	45	42	38	38	32	28	28	29	36
15	27	25	21	19	19	20	20	24	26	28	29	29	30	30	33	34	38	37	40	36	33	32	28	26	29
16	24	22	21	19	19	19	21	24	27	27	25	26	26	30	29	30	33	37	38	37	31	31	30	28	27
17	25	23	22	21	19	21	21	23	28	32	30	34	38	42	50	43	36	34	36	33	33	32	30	27	31
18	31	29	28	27	26	27	27	27	34	28	27	27	27	31	31	33	37	31	30	29	31	31	30	30	30
19	29	27	28	26	24	23	24	44	33	29	34	36	35	41	38	34	35	36	40	39	35	37	38	35	33
20	35	29	28	25	22	25	29	31	38	43	41	38	34	30	30	28	25	22	25	32	32	30	30	27	30
21	26	24	23	19	19	18	23	24	32	29	26	27	27	31	34	35	35	36	39	36	33	32	31	29	29
22	29	27	24	27	23	22	22	24	28	28	28	32	40	38	45	57	69	50	41	39	36	32	32	39	35
23	36	33	28	23	18	18	19	23	27	30	29	29	31	31	32	40	50	50	43	32	29	30	29	27	31
24	26	25	24	24	22	22	24	24	26	27	28	27	28	29	30	29	30	32	33	31	31	29	29	27	27
25	26	25	24	23	23	23	23	23	23	25	25	25	25	25	25	25	25	26	26	24	23	23	23	22	24
26	23	22	20	19	19	16	18	23	20	22	24	29	37	40	42	43	53	58	58	61	68	53	43	36	35
27	29	24	22	20	17	15	15	15	18	18	20	22	23	24	25	25	25	25	25	21	21	21	20	20	21
28	19	M	17	15	14	16	18	21	23	27	28	27	27	29	32	37	36	37	39	35	34	29	26	25	27
29	23	22	18	17	17	18	20	23	28	30	29	31	33	33	35	41	40	42	41	37	35	32	30	30	29
30	28	23	21	21	20	22	24	29	31	35	36	36	36	37	39	45	49	53	53	53	46	37	32	33	35
31	32	29	28	27	25	24	27	30	32	34	33	34	34	36	43	48	49	44	43	36	32	31	29	27	34

MONTHLY STATISTICS:

GEOM	ARITH-----PERCENTILES-----										RANGE-----		STN GEOM	PERCENT	NO. OF TIMES	
MEAN	MEDIAN	MEAN	50	90	95	98	99	1-HR	24-HR	DEVIATION	VALID DATA	ABOVE	LIMIT	LEVEL		
30	29	32	29	45	52	59	63	14	-	72	21	-	45	1	99	0

NOTES: 1. FLAGS FOR INVALID DATA :  
D: DYNAMIC CALIBRATION  
T: TELEMETRY/DATALOGGR FAULT  
M: MAINTENANCE OR ANALYZER FAULT  
P: POWER FAILURE

THE HONGKONG ELECTRIC COMPANY, LTD.  
AIR QUALITY DATA MONTHLY TIME SERIES REPORT  
MONTH: DECEMBER

STATION : VICTORIA ROAD SUBSTATION  
POLLUTANT : SULPHUR DIOXIDE

YEAR : 2016  
UNIT : MICROGRAMS/CUBIC METER

DAY	1	2	3	4	5	6	7	8	9	10	11	12	13	14	15	16	17	18	19	20	21	22	23	24	MEAN
1	3	3	3	3	3	3	3	3	4	6	6	8	5	5	4	4	3	3	3	3	3	3	3	0	4
2	0	0	0	0	0	0	0	0	0	0	0	0	0	0	0	1	2	1	0	0	0	0	0	2	0
3	2	2	2	2	2	2	2	2	2	3	3	3	3	3	3	2	5	9	9	7	7	8	5	4	4
4	3	3	3	3	3	3	3	3	4	5	8	9	8	11	22	16	9	6	4	4	5	5	5	6	6
5	6	8	12	11	11	9	9	9	11	15	14	16	7	9	11	16	8	5	6	5	6	7	6	5	9
6	4	4	4	4	4	4	3	3	4	4	4	4	3	3	3	4	5	6	6	5	5	5	5	5	4
7	4	4	4	4	4	4	4	4	5	5	5	7	7	6	7	4	5	5	5	5	5	5	5	0	5
8	0	0	0	0	0	0	0	0	0	0	0	0	0	0	0	0	0	0	0	0	0	0	0	4	0
9	3	3	5	4	3	3	2	3	4	5	3	3	2	2	2	2	2	2	2	2	2	2	2	2	3
10	2	2	2	2	2	2	3	3	3	4	4	3	3	5	3	3	4	5	2	2	2	2	2	0	3
11	0	0	0	0	0	0	0	0	0	0	0	0	0	0	0	0	0	0	0	0	0	0	0	0	0
12	0	0	0	0	0	0	0	0	0	0	0	0	0	0	0	0	0	0	0	0	0	0	0	1	0
13	0	0	1	1	1	0	0	0	1	2	3	2	3	1	2	5	6	2	1	2	6	7	6	4	2
14	3	2	2	1	0	0	0	0	0	0	M	M	0	0	1	1	0	0	0	0	0	0	0	3	1
15	3	3	3	3	2	2	3	3	2	3	3	3	3	2	2	2	2	2	2	2	2	2	2	3	2
16	2	3	3	3	2	3	2	3	3	3	3	3	3	3	2	2	2	2	2	2	3	3	3	3	3
17	3	3	3	3	3	3	3	3	3	3	3	6	6	8	7	3	3	3	3	3	3	2	2	1	3
18	1	1	2	2	2	2	2	2	2	2	2	2	2	2	2	2	2	2	2	2	2	2	2	2	2
19	2	2	2	2	2	2	2	3	5	5	5	5	4	6	4	4	3	2	3	3	4	4	3	3	3
20	4	3	3	3	3	2	2	3	3	4	3	3	3	3	2	2	2	1	1	2	2	2	2	2	3
21	2	2	2	2	2	2	2	2	2	2	3	3	3	3	3	4	4	4	4	5	5	5	5	0	3
22	0	0	0	0	0	0	0	0	0	0	0	0	0	0	0	0	0	0	0	0	0	0	0	0	0
23	0	0	0	0	0	0	0	0	0	0	0	0	0	0	0	0	0	0	0	0	0	0	0	0	0
24	0	0	0	0	0	0	0	0	0	0	0	0	0	0	0	0	0	0	0	0	0	0	0	2	0
25	1	2	2	1	2	2	2	1	2	2	2	2	2	2	2	2	2	2	2	2	2	2	2	2	2
26	2	2	3	3	3	3	3	3	3	3	4	8	9	7	8	7	11	13	10	8	7	6	5	0	5
27	0	0	0	0	0	0	0	0	0	0	0	0	0	0	0	0	0	0	0	0	0	0	0	2	0
28	2	2	2	2	2	2	3	3	2	3	3	4	3	3	3	3	3	3	3	3	3	3	2	3	3
29	3	3	3	3	3	3	3	3	4	4	4	4	4	4	5	5	3	3	3	4	3	4	3	3	4
30	3	3	3	2	2	3	3	3	3	4	3	4	4	4	4	4	4	4	5	4	4	3	3	3	3
31	2	2	2	2	2	2	2	3	3	4	3	3	3	3	5	6	4	4	3	2	2	2	2	2	3

MONTHLY STATISTICS:

GEOM	ARITH-----PERCENTILES-----							-----RANGE-----				STN GEOM	PERCENT	NO. OF TIMES		
MEAN	MEDIAN	MEAN	50	90	95	98	99	1-HR		24-HR		DEVIATION	VALID DATA	ABOVE LIMIT LEVEL		
3	2	3	2	5	7	9	12	0	-	22	0	-	9	2	100	0

- NOTES: 1. FLAGS FOR INVALID DATA :
- D: DYNAMIC CALIBRATION
  - T: TELEMETRY/DATALOGGR FAULT
  - M: MAINTENANCE OR ANALYZER FAULT
  - P: POWER FAILURE

THE HONGKONG ELECTRIC COMPANY, LTD.  
AIR QUALITY DATA MONTHLY TIME SERIES REPORT  
MONTH: DECEMBER

STATION : POK FU LAM  
POLLUTANT : NITROGEN DIOXIDE

YEAR : 2016  
UNIT : MICROGRAMS/CUBIC METER

DAY	1	2	3	4	5	6	7	8	9	10	11	12	13	14	15	16	17	18	19	20	21	22	23	24	MEAN
1	55	53	19	21	52	72	65	76	74	74	63	58	53	51	57	67	68	97	61	52	62	89	93	30	61
2	26	28	19	32	15	12	14	53	72	64	50	31	25	27	49	55	60	72	63	59	50	35	29	23	40
3	20	13	11	12	12	14	20	24	32	31	32	37	44	57	62	69	78	138	140	128	124	97	57	19	53
4	23	M	18	13	15	12	20	58	60	61	63	68	85	80	118	118	90	78	72	94	111	123	129	121	71
5	115	124	126	118	115	114	110	102	102	105	90	89	35	69	52	87	62	53	124	127	127	96	34	35	92
6	27	18	17	14	13	13	24	45	54	52	48	45	41	36	35	63	75	90	87	67	51	43	39	47	44
7	42	35	30	29	28	27	44	61	83	83	80	74	63	64	69	89	71	59	97	98	96	130	64	34	65
8	40	61	47	36	29	20	28	57	73	82	79	66	61	39	48	54	75	94	143	178	148	78	50	57	68
9	56	58	63	38	33	29	45	86	99	87	39	M	24	18	20	25	23	44	47	61	51	35	18	16	44
10	13	11	10	8	10	13	23	52	54	49	30	28	33	59	41	43	101	60	80	46	29	22	18	13	35
11	10	10	8	8	8	8	12	18	17	17	13	13	12	11	8	8	11	14	17	16	14	8	8	10	12
12	11	8	7	7	9	9	13	31	30	31	38	27	21	25	29	27	28	33	29	32	18	61	71	76	28
13	68	87	61	60	62	18	40	66	72	64	59	58	52	51	54	56	80	75	80	110	147	145	140	113	76
14	88	68	39	26	17	15	27	49	54	57	56	53	49	58	61	63	74	68	53	63	52	49	60	52	52
15	44	30	24	22	20	21	30	46	59	48	41	38	32	34	34	48	52	68	78	68	66	36	38	35	42
16	30	30	24	20	18	20	26	40	55	52	31	34	25	24	23	38	47	53	50	48	69	68	64	80	40
17	55	28	20	19	28	34	30	22	21	31	37	42	54	61	76	71	55	46	48	40	30	21	18	16	38
18	14	M	11	14	17	15	20	17	34	19	20	19	14	11	14	17	20	14	19	19	36	50	38	16	20
19	18	13	9	7	5	5	5	20	34	53	61	30	38	38	38	40	31	49	79	90	113	102	62	74	42
20	87	75	69	29	15	53	37	56	85	81	63	35	28	23	29	21	25	22	24	22	23	35	16	14	40
21	11	10	10	9	8	6	9	13	19	16	17	19	25	30	38	45	44	67	89	90	82	76	71	70	36
22	66	46	38	60	49	51	43	38	46	48	43	48	46	37	46	49	57	74	79	62	50	50	66	89	53
23	77	71	60	62	30	16	15	21	25	27	25	25	25	31	32	51	53	58	55	38	24	15	13	14	36
24	13	10	9	8	8	7	12	15	23	26	26	24	24	22	25	30	36	41	40	35	33	22	16	14	22
25	15	12	12	11	12	11	15	13	13	11	11	14	13	16	15	18	16	16	19	21	11	16	23	20	15
26	9	10	16	17	20	17	24	41	33	M	39	42	39	54	71	67	79	103	113	124	174	119	93	72	60
27	55	43	40	35	24	22	21	23	23	22	25	28	29	25	25	26	34	30	33	32	34	33	32	32	30
28	33	26	21	18	18	21	30	37	41	49	52	46	40	39	50	59	63	73	86	78	62	48	36	37	44
29	33	27	18	18	18	22	31	46	54	56	44	45	46	44	54	64	64	80	88	74	58	56	58	61	48
30	56	37	35	19	25	33	35	50	58	72	71	65	66	57	64	73	95	118	141	138	87	47	40	32	63
31	29	24	18	18	17	14	38	39	48	43	33	29	26	39	59	61	76	84	75	43	26	25	20	16	38

MONTHLY STATISTICS:

GEOM	ARITH-----PERCENTILES-----							-----RANGE-----					STN GEOM	PERCENT	NO. OF TIMES	
MEAN	MEDIAN	MEAN	50	90	95	98	99	1-HR	24-HR	DEVIATION	VALID DATA	ABOVE	LIMIT	LEVEL		
36	38	45	38	86	105	127	140	5	-	178	12	-	92	2	99	0

NOTES: 1. FLAGS FOR INVALID DATA :  
D: DYNAMIC CALIBRATION  
T: TELEMETRY/DATALOGGR FAULT  
M: MAINTENANCE OR ANALYZER FAULT  
P: POWER FAILURE

THE HONGKONG ELECTRIC COMPANY, LTD.  
AIR QUALITY DATA MONTHLY TIME SERIES REPORT  
MONTH: DECEMBER

STATION : POK FU LAM  
POLLUTANT : SULPHUR DIOXIDE

YEAR : 2016  
UNIT : MICROGRAMS/CUBIC METER

DAY	1	2	3	4	5	6	7	8	9	10	11	12	13	14	15	16	17	18	19	20	21	22	23	24	MEAN
1	5	5	3	3	6	6	5	5	8	18	14	16	10	10	9	7	4	4	4	5	5	5	5	4	7
2	3	2	2	3	2	2	2	3	5	5	5	4	3	3	3	3	8	3	3	5	4	4	3	3	3
3	4	4	3	4	4	4	5	5	6	8	6	6	5	8	14	16	19	34	37	28	31	21	12	6	12
4	4	4	4	3	3	2	2	2	4	11	25	16	15	17	38	41	26	17	11	13	14	23	32	32	15
5	30	57	67	51	35	26	26	19	20	57	26	34	13	46	26	52	21	10	33	24	17	16	8	7	30
6	6	6	5	5	4	4	4	4	5	5	4	4	4	4	4	5	5	5	5	5	6	6	7	7	5
7	7	7	7	7	7	8	8	8	8	9	9	8	19	14	17	22	11	12	18	15	13	11	8	8	11
8	7	7	7	7	6	7	8	8	8	9	8	13	24	13	13	15	17	5	18	30	15	7	6	5	11
9	6	5	9	6	5	5	5	6	8	7	5	M	4	2	1	2	3	2	2	3	3	3	2	3	4
10	3	3	3	3	4	4	5	5	7	7	5	5	4	18	13	8	29	14	8	6	4	3	4	3	7
11	2	2	2	2	1	1	2	3	4	3	3	3	3	2	1	1	1	1	1	1	1	0	0	1	2
12	1	1	1	1	1	1	1	1	1	3	6	2	1	1	1	1	0	0	1	1	2	14	20	12	3
13	6	9	13	14	7	2	3	2	13	10	10	11	11	7	13	18	33	14	9	15	39	51	36	13	15
14	6	3	3	2	2	1	1	1	2	1	2	5	8	9	5	3	2	2	2	2	2	2	2	2	3
15	2	1	1	1	1	1	1	1	3	3	2	2	2	2	2	2	2	2	2	3	3	3	2	2	2
16	2	3	3	3	3	4	4	4	6	5	4	4	4	3	3	3	3	3	3	3	4	4	4	4	4
17	4	4	4	4	4	3	4	5	6	6	4	5	13	10	16	9	6	3	3	4	5	3	3	3	5
18	3	4	3	3	3	3	4	3	5	3	2	1	1	2	1	2	1	2	2	1	2	5	2	2	3
19	2	3	3	3	2	1	0	1	4	18	28	6	8	9	8	5	1	1	7	17	33	28	10	14	9
20	14	15	12	6	6	26	17	16	28	26	14	6	5	6	4	4	2	2	2	4	4	8	3	3	10
21	3	2	2	3	2	2	3	3	2	1	2	2	2	1	1	1	1	1	8	7	5	4	4	9	3
22	8	3	1	3	2	2	1	1	2	2	3	3	4	3	3	1	1	1	1	4	1	1	2	2	2
23	2	2	1	3	3	3	1	1	2	2	2	1	3	2	2	8	4	2	2	2	2	2	1	1	2
24	1	1	1	1	2	2	2	3	3	4	4	5	5	4	4	4	3	3	3	4	4	3	3	3	3
25	3	2	2	2	2	2	3	3	4	5	4	3	3	3	1	0	1	1	1	1	1	0	1	1	2
26	0	1	4	4	7	4	4	5	7	M	15	21	14	15	20	21	25	28	21	17	25	13	7	6	12
27	6	4	3	3	2	1	1	1	1	1	2	2	2	2	1	2	2	1	1	1	1	1	1	2	2
28	2	2	2	2	3	3	3	3	4	4	4	4	3	3	3	3	3	3	4	5	4	4	3	4	3
29	4	3	3	4	4	4	5	4	5	5	6	5	5	5	9	11	5	5	5	5	5	5	5	5	5
30	5	4	4	4	4	5	5	5	5	5	6	7	7	6	6	6	5	5	6	6	6	5	4	5	5
31	3	2	2	2	2	3	3	5	8	10	6	5	4	6	21	13	20	14	7	3	3	2	2	1	6

MONTHLY STATISTICS:

GEOM	ARITH-----PERCENTILES-----							-----RANGE-----				STN GEOM	PERCENT	NO. OF TIMES		
MEAN	MEDIAN	MEAN	50	90	95	98	99	1-HR		24-HR	DEVIATION	VALID DATA	ABOVE	LIMIT LEVEL		
4	4	7	4	16	25	33	40	0	-	67	2	-	30	3	100	0

NOTES: 1. FLAGS FOR INVALID DATA :  
D: DYNAMIC CALIBRATION  
T: TELEMETRY/DATALOGGR FAULT  
M: MAINTENANCE OR ANALYZER FAULT  
P: POWER FAILURE

THE HONGKONG ELECTRIC CO., LTD.  
AIR QUALITY DATA MONTHLY TIME SERIES REPORT

STATION: AP LEI CHAU  
POLLUTANT: NITROGEN DIOXIDE

DATE: DECEMBER 2016  
UNIT: MICROGRAMS PER CUBIC METER

DAY\HOUR	1	2	3	4	5	6	7	8	9	10	11	12	12	14	15	16	17	18	19	20	21	22	23	24
1																								
2																								
3																								
4																								
5																								
6																								
7																								
8																								
9																								
10																								
11																								
12																								
13																								
14																								
15																								
16																								
17																								
18																								
19																								
20																								
21																								
22																								
23																								
24																								
25																								
26																								
27																								
28																								
29																								
30																								
31																								

AMBIENT AIR MONITORING AT AP LEI CHAU TEMPORARILY SUSPENDED

THE HONGKONG ELECTRIC CO., LTD.  
AIR QUALITY DATA MONTHLY TIME SERIES REPORT

STATION: AP LEI CHAU  
POLLUTANT: SULPHUR DIOXIDE

DATE: DECEMBER 2016  
UNIT: MICROGRAMS PER CUBIC METER

DAY\HOUR	1	2	3	4	5	6	7	8	9	10	11	12	12	14	15	16	17	18	19	20	21	22	23	24
1																								
2																								
3																								
4																								
5																								
6																								
7																								
8																								
9																								
10																								
11																								
12																								
13																								
14																								
15																								
16																								
17																								
18																								
19																								
20																								
21																								
22																								
23																								
24																								
25																								
26																								
27																								
28																								
29																								
30																								
31																								

AMBIENT AIR MONITORING AT AP LEI CHAU TEMPORARILY SUSPENDED

THE HONGKONG ELECTRIC COMPANY, LTD.  
AIR QUALITY DATA MONTHLY TIME SERIES REPORT  
MONTH: DECEMBER

STATION : CHEUNG CHAU  
POLLUTANT : NITROGEN DIOXIDE

YEAR : 2016  
UNIT : MICROGRAMS/CUBIC METER

DAY	1	2	3	4	5	6	7	8	9	10	11	12	13	14	15	16	17	18	19	20	21	22	23	24	MEAN
1	50	60	27	23	39	36	50	48	54	57	54	54	55	58	58	71	86	95	90	121	129	112	102	96	68
2	41	56	50	42	35	40	50	52	63	54	58	61	62	54	60	58	51	26	27	38	35	25	24	24	45
3	15	23	14	15	12	35	59	49	45	37	65	71	80	76	67	23	39	41	38	50	65	79	90	14	46
4	13	22	52	104	78	75	84	88	62	76	72	74	67	61	55	59	63	59	49	56	80	108	124	107	70
5	119	105	89	82	121	120	112	124	116	110	109	102	58	41	39	29	28	23	26	47	59	76	85	118	81
6	53	23	18	16	17	17	28	30	40	41	38	40	40	56	58	53	67	65	99	75	62	62	61	65	47
7	58	54	61	49	41	41	41	43	50	77	70	64	68	59	31	42	37	31	33	37	53	117	129	75	57
8	123	122	90	56	38	32	42	45	56	83	75	76	49	42	24	16	18	27	56	95	93	141	142	140	70
9	105	88	55	49	54	59	86	63	82	84	94	86	41	14	18	11	8	17	25	25	43	77	26	30	52
10	37	24	13	15	36	52	50	73	80	92	66	51	59	19	17	22	19	26	19	25	22	14	15	15	36
11	28	39	34	36	35	38	30	31	25	18	23	20	15	11	8	9	14	36	36	23	21	7	7	10	23
12	18	16	27	18	20	37	60	57	69	30	43	14	10	14	11	11	11	13	16	15	16	14	22	47	25
13	73	64	33	19	17	35	45	42	38	83	64	51	27	25	34	39	55	41	93	125	140	92	96	109	60
14	122	M	34	19	16	24	30	29	40	53	57	52	56	52	66	71	46	79	103	84	52	52	50	39	53
15	31	27	24	21	21	24	39	35	39	41	42	42	49	46	50	59	71	60	75	51	47	43	47	39	43
16	33	28	24	22	23	26	30	35	36	48	49	47	43	38	30	31	35	47	60	42	73	77	72	74	43
17	73	63	39	45	41	38	49	62	69	51	61	55	54	75	91	47	38	38	54	33	62	32	28	18	51
18	20	23	31	28	40	56	67	64	61	53	51	21	14	10	11	12	13	13	33	83	118	91	49	52	42
19	38	21	41	23	28	18	13	44	48	20	14	18	23	18	11	13	16	17	20	26	24	16	23	26	23
20	21	12	10	38	42	34	46	40	27	38	34	35	24	14	22	17	36	16	18	35	34	26	16	70	29
21	54	52	42	18	17	30	29	32	38	26	58	64	58	71	65	84	87	102	100	95	86	78	84	81	60
22	71	52	22	41	77	74	54	42	41	39	50	65	80	88	84	80	84	74	49	44	47	43	39	40	58
23	45	43	47	42	42	39	45	43	51	68	53	59	61	62	25	21	22	31	42	30	20	18	11	23	39
24	25	23	19	17	15	14	23	20	21	26	26	28	26	22	22	26	29	37	35	39	36	31	17	14	25
25	24	32	26	16	15	24	21	26	28	16	16	21	24	29	34	23	29	29	73	45	24	27	21	73	29
26	78	62	46	21	20	14	15	11	20	13	20	49	69	32	30	35	47	58	70	112	152	127	127	71	54
27	59	56	50	44	41	31	31	34	28	27	28	29	35	39	40	38	42	45	47	36	35	36	35	31	38
28	30	M	22	19	18	18	21	26	32	44	39	47	43	46	47	61	76	56	73	71	61	59	59	51	44
29	41	40	27	25	24	26	29	40	44	48	37	45	41	46	50	61	60	55	66	71	61	62	66	56	47
30	62	52	38	34	39	31	39	41	54	77	54	54	58	66	77	75	110	108	149	139	74	47	37	23	64
31	26	21	20	19	23	51	60	69	86	100	45	37	32	25	18	23	28	37	29	34	30	23	35	16	37

MONTHLY STATISTICS:

GEOM	ARITH-----PERCENTILES-----										RANGE-----				STN GEOM	PERCENT	NO. OF TIMES
MEAN	MEDIAN	MEAN	50	90	95	98	99	1-HR		24-HR		DEVIATION	VALID DATA	ABOVE	LIMIT	LEVEL	
40	41	47	41	84	104	122	129	7	-	152	23	-	81	2	100	0	

- NOTES: 1. FLAGS FOR INVALID DATA :
- D: DYNAMIC CALIBRATION
  - T: TELEMETRY/DATALOGGR FAULT
  - M: MAINTENANCE OR ANALYZER FAULT
  - P: POWER FAILURE

THE HONGKONG ELECTRIC COMPANY, LTD.  
AIR QUALITY DATA MONTHLY TIME SERIES REPORT  
MONTH: DECEMBER

STATION : CHEUNG CHAU  
POLLUTANT : SULPHUR DIOXIDE

YEAR : 2016  
UNIT : MICROGRAMS/CUBIC METER

DAY	1	2	3	4	5	6	7	8	9	10	11	12	13	14	15	16	17	18	19	20	21	22	23	24	MEAN
1	3	3	2	1	2	1	2	3	4	5	4	4	4	5	3	4	4	2	2	2	4	4	2	5	3
2	2	3	2	1	0	0	1	0	2	3	5	6	4	4	4	3	2	2	1	2	3	2	2	5	2
3	1	1	1	1	1	2	2	3	2	4	8	8	8	5	4	4	5	3	3	3	4	3	5	5	4
4	2	2	2	5	3	2	2	4	4	6	6	7	7	8	18	20	20	16	13	16	11	11	10	13	9
5	10	12	13	11	15	12	11	15	13	13	19	27	13	11	13	13	11	4	3	5	3	3	4	10	11
6	5	4	4	3	3	3	6	3	4	4	4	3	2	3	3	3	6	3	5	5	5	6	6	9	4
7	7	7	11	9	9	7	7	7	8	8	9	10	12	14	8	8	6	5	5	7	9	9	8	11	8
8	10	10	11	7	5	6	7	7	9	14	15	13	12	9	7	4	5	7	6	8	10	8	6	7	8
9	4	4	3	3	3	3	3	4	9	10	15	15	6	4	3	1	0	1	1	1	2	2	1	4	4
10	2	2	1	1	2	2	3	3	6	11	9	7	6	6	5	6	3	4	4	4	3	1	2	4	4
11	1	1	1	1	1	1	1	2	2	2	2	2	2	1	0	0	0	1	0	1	0	0	0	1	1
12	0	0	1	0	0	0	2	1	2	2	6	4	2	2	2	2	1	1	2	1	2	1	3	3	2
13	3	2	2	1	0	2	2	5	7	9	7	7	8	7	11	13	21	8	6	7	6	3	4	6	6
14	4	5	1	0	0	0	0	0	0	1	4	1	1	0	2	1	0	1	2	1	0	0	0	2	1
15	0	0	0	0	0	0	1	0	1	0	0	2	2	1	1	1	1	1	1	0	0	1	1	2	1
16	1	1	1	1	1	1	2	2	3	4	5	4	2	2	2	1	2	1	1	2	2	1	3	6	2
17	4	4	2	2	3	2	2	5	4	4	7	6	5	5	6	5	5	3	2	2	2	3	3	3	4
18	1	1	2	1	2	1	0	1	5	9	8	5	3	2	1	2	2	2	1	0	2	1	1	3	2
19	1	1	1	0	1	1	1	4	4	4	5	7	5	6	5	3	3	5	5	5	5	3	7	9	4
20	3	2	3	6	5	3	5	4	5	10	8	13	11	9	7	6	12	1	1	2	7	5	3	5	6
21	11	15	11	3	3	2	3	11	3	1	4	3	3	2	1	1	1	1	0	0	0	0	0	3	3
22	0	0	0	0	0	1	0	1	2	2	4	5	7	9	8	6	4	1	0	0	0	0	0	1	2
23	0	0	0	0	0	0	0	0	1	2	1	2	4	3	2	4	2	2	3	4	2	2	0	7	2
24	7	6	2	2	2	2	6	4	2	3	6	5	5	5	4	4	7	4	14	17	16	12	4	5	6
25	11	12	8	3	3	8	8	10	16	7	7	13	15	8	6	3	15	12	3	3	5	5	6	5	8
26	4	4	2	4	3	2	2	1	3	4	10	7	9	7	8	9	10	10	9	9	9	7	12	12	7
27	6	4	2	1	1	0	0	0	0	0	0	0	1	1	2	2	1	1	0	0	0	0	0	2	1
28	1	0	1	1	2	2	2	2	2	3	2	4	3	3	2	4	3	1	2	3	2	2	3	4	2
29	1	0	1	2	2	3	3	6	4	4	3	5	4	3	2	3	4	2	3	2	3	4	3	5	3
30	8	5	3	3	6	3	4	4	6	5	4	4	5	5	6	6	5	5	5	5	7	8	7	5	5
31	4	1	1	1	1	3	4	4	6	13	9	6	5	5	4	5	4	4	4	4	3	2	2	1	4

MONTHLY STATISTICS:

GEOM	ARITH-----PERCENTILES-----										RANGE-----		STN GEOM	PERCENT	NO. OF TIMES	
MEAN	MEDIAN	MEAN	50	90	95	98	99	1-HR		24-HR		DEVIATION	VALID DATA	ABOVE	LIMIT	LEVEL
3	3	4	3	9	12	15	16	0	-	27	1	-	11	2	100	0

- NOTES: 1. FLAGS FOR INVALID DATA :
- D: DYNAMIC CALIBRATION
  - T: TELEMETRY/DATALOGGR FAULT
  - M: MAINTENANCE OR ANALYZER FAULT
  - P: POWER FAILURE

## Appendix C Summary Results on Water Quality Monitoring

### LAMMA POWER STATION FGD WASTEWATER TREATMENT PLANT EFFLUENT DISCHARGE TO ASH LAGOON SUSPENDED SOLIDS AND PH

Period : October – December 2016

Week Ending	No. of Samples	Suspended Solids, mg/L			pH		
		Maximum	Minimum	Average	Maximum	Minimum	Average
01/10/16	5*	22	18	20	8.2	8.1	8.1
08/10/16	6*	20	15	17	8.1	8.0	8.1
15/10/16	4*	20	12	16	8.0	8.0	8.0
22/10/16	6*	22	10	15	8.2	8.0	8.1
29/10/16	6*	20	14	17	8.2	8.0	8.1
05/11/16	6*	19	12	16	8.3	8.0	8.2
12/11/16	5*	22	11	16	8.3	8.0	8.1
19/11/16	7	22	10	17	8.3	8.1	8.2
26/11/16	5*	22	16	18	8.2	8.0	8.1
03/12/16	6*	22	12	17	8.2	8.0	8.1
10/12/16	6*	23	11	17	8.2	7.9	8.0
17/12/16	5*	20	14	17	8.2	8.0	8.1
24/12/16	6*	20	14	16	8.2	7.9	8.0
31/12/16	6*	20	12	16	8.2	8.0	8.1

Remark :

\* - No sampling for the remaining day(s) of the week / no sampling due to no discharge

LAMMA POWER STATION  
FGD WASTEWATER TREATMENT PLANT  
EFFLUENT DISCHARGE TO ASH LAGOON  
TRACE METAL, TOTAL PHOSPHORUS  
AND TOTAL NITROGEN ANALYSIS

Period : October – December 2016

Sampling date		4/10/2016	3/11/2016	6/12/2016
Barium,	ug/L	<150	<150	<150
Mercury,	ug/L	<0.5	<0.5	<0.5
Cadmium,	ug/L	<1	<1	<1
Iron,	ug/L	<400	<400	<400
Total Phosphorous,	mg/L	<0.8	<0.8	<0.8
Total Nitrogen,	mg/L	223	156	204
Cyanide,	mg/L	0.02	0.02	<0.01

Remark:

According to the WPCO Ash Lagoon Discharge Licence, contents at exact levels of trace metals below 1/10 th of the WPCO Licence permitted limits will not be reported. When the concentration of a metal exceeds 1/10 th of the limit, the exact value of the metal concentration will be reported.

## Appendix D Summary of EMIS

EM&A Log Ref.	Mitigation Measures	Implementation Status
	<b>GENERAL</b>	
A1	No other process, except the Wet Limestone-Gypsum process used in the FGD plants of the coal-fired Units L6, L7 and L8 within the Lamma Power Station, shall be used in the FGD plants for the projects unless otherwise agreed by EPD.	Complied
	<b>WATER QUALITY</b>	
B1	All wastewater arising from the operation of the projects shall be collected and directed to the existing wastewater treatment plant within the Lamma Power Station for treatment.	Complied
B2	The operational plant effluent from the FGD plants should be reused as much as possible in order to minimise discharge to the WWTP.	Complied
B3	Maintenance of the WWTP should be performed regularly to ensure the effluent from the WWTP would not exceed the current requirements stipulated in the WPCO licence for Ash Lagoon.	Complied
	<b>WASTE</b>	
C1	No gypsum or sludge arising from the operation of the projects shall be disposed of anywhere. All gypsum and sludge shall be collected and reused.	Complied
	<b>NOISE</b>	
D1	Equipment including the Absorber Recirculation Pump, Oxidation Air Blower, Booster Fan and Booster Fan Motor of the FGD plants shall be acoustically insulated and the Gas-Gas Heater (untreated side) of the FGD plants shall be provided with reinforced lagging to reduce the noise impact.	Complied