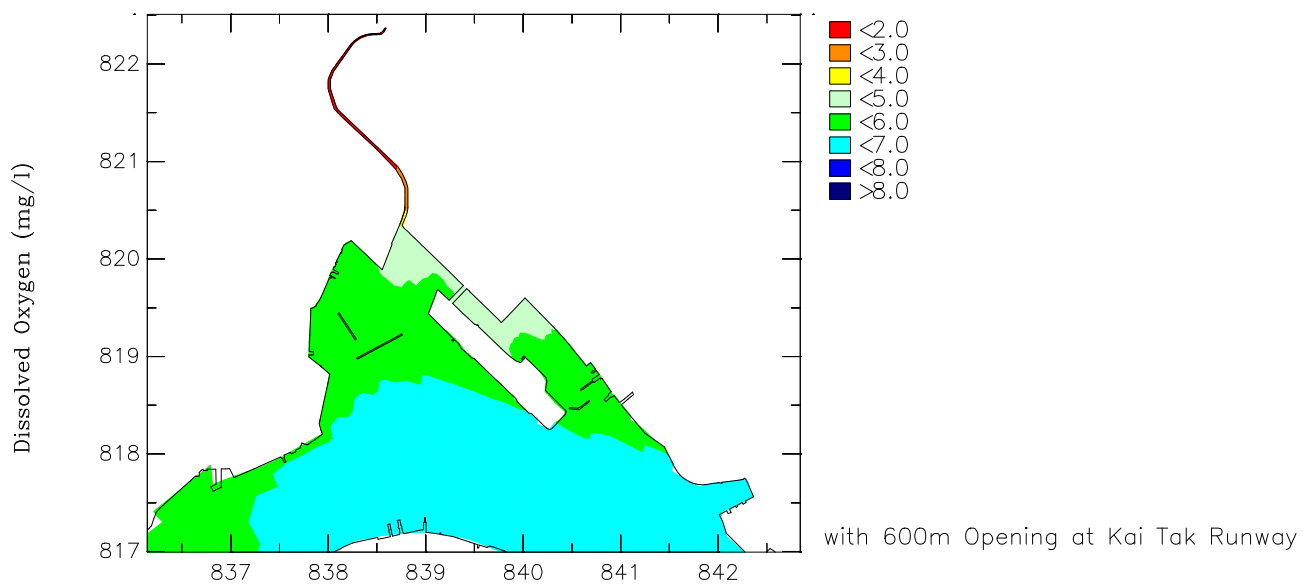
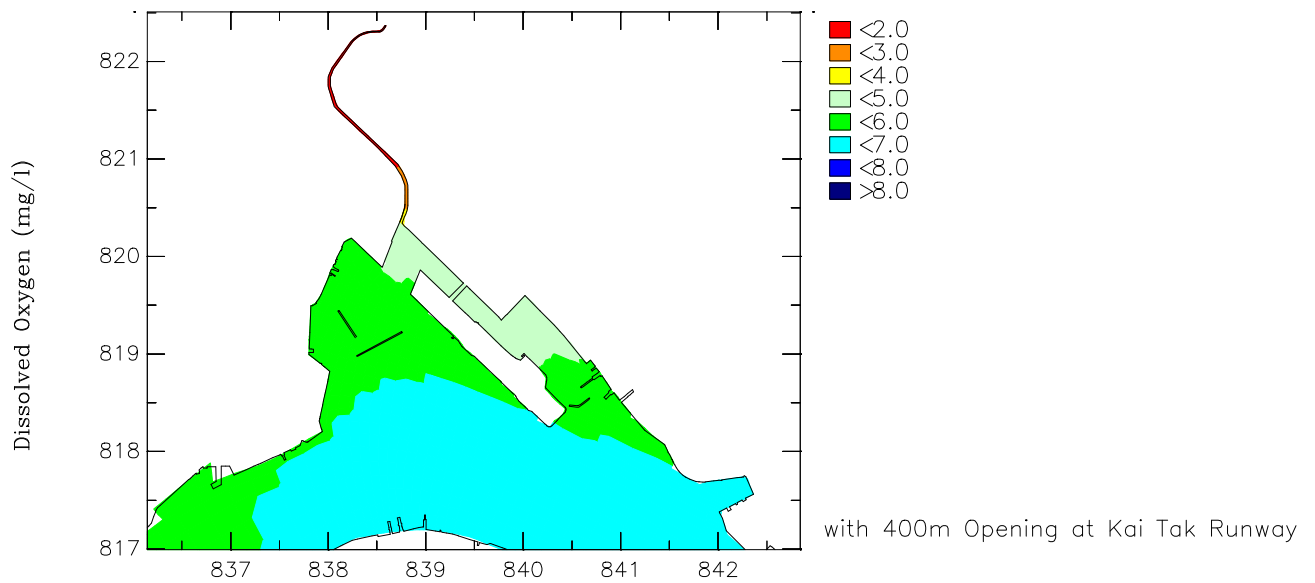
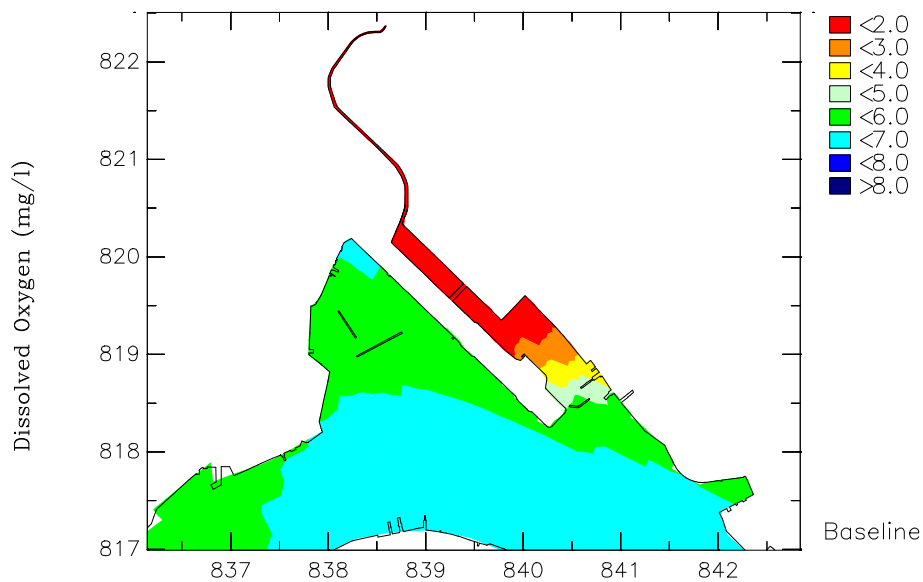


Appendix 8.6

***Water Quality Contour Plots (Close Up at KTD
Area) – Scenarios 1A, 1B and 1C***



Agreement No. CE 35/2006(CE) Kai Tak Development Engineering Study cum Design and Construction of Advance Works – Investigation, Design and Construction

Mean Bottom Dissolved Oxygen

Upper: Unmitigated Scenario; Middle: Mitigated Scenario (with 400m Opening); Lower: Mitigated Scenario (with 600mGap)

Annual

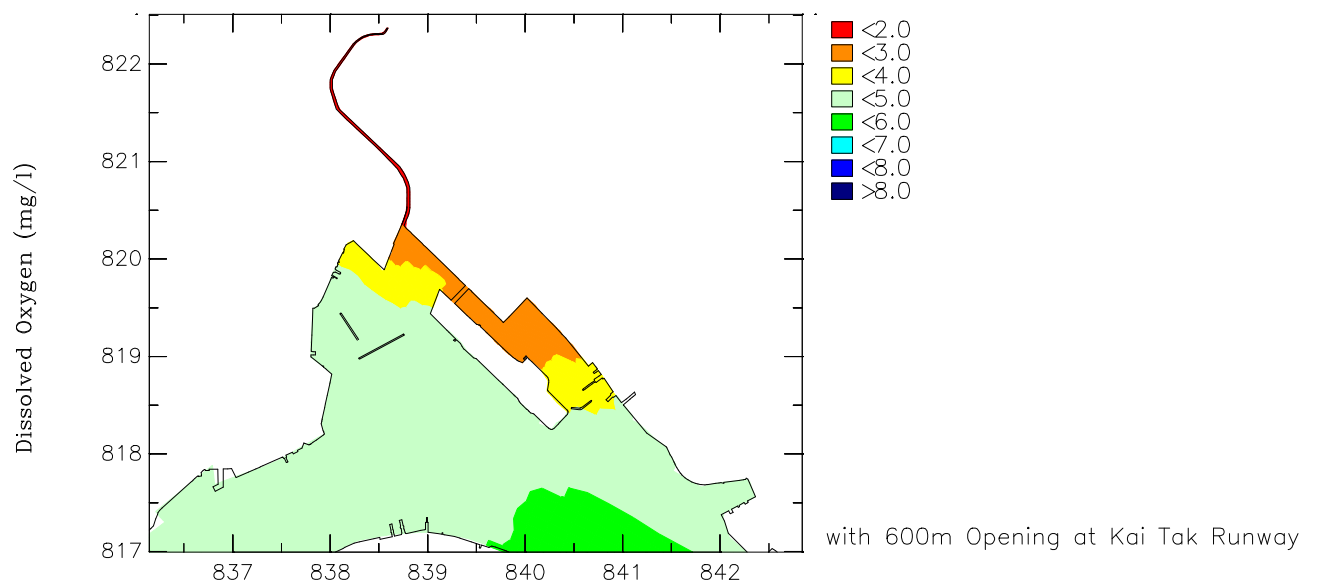
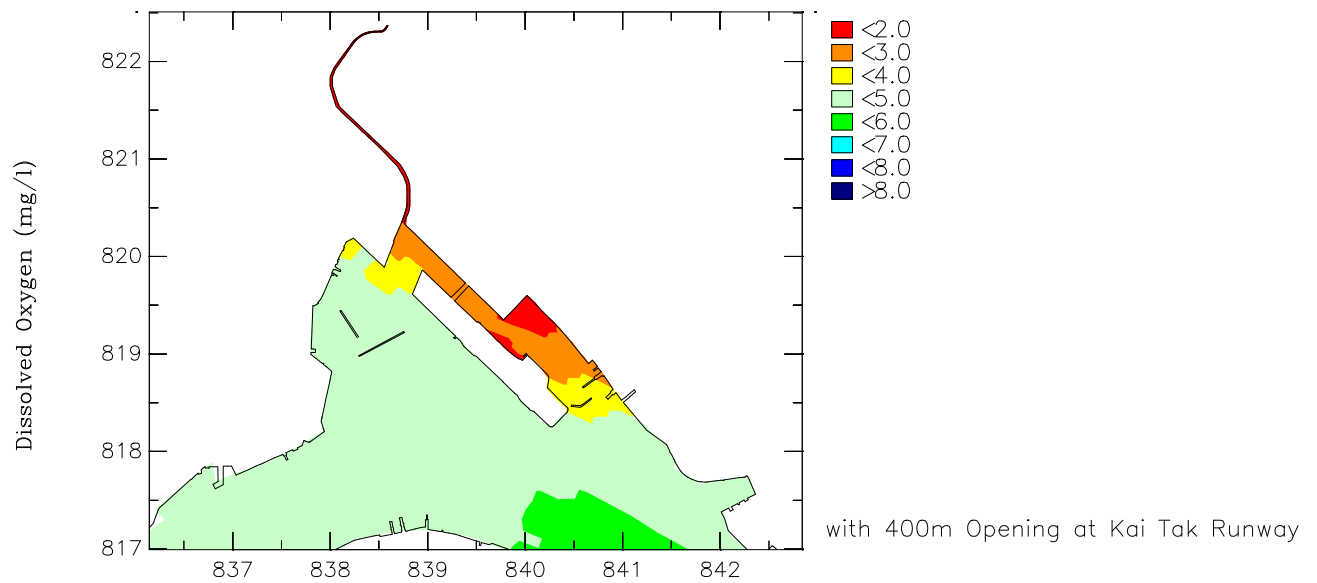
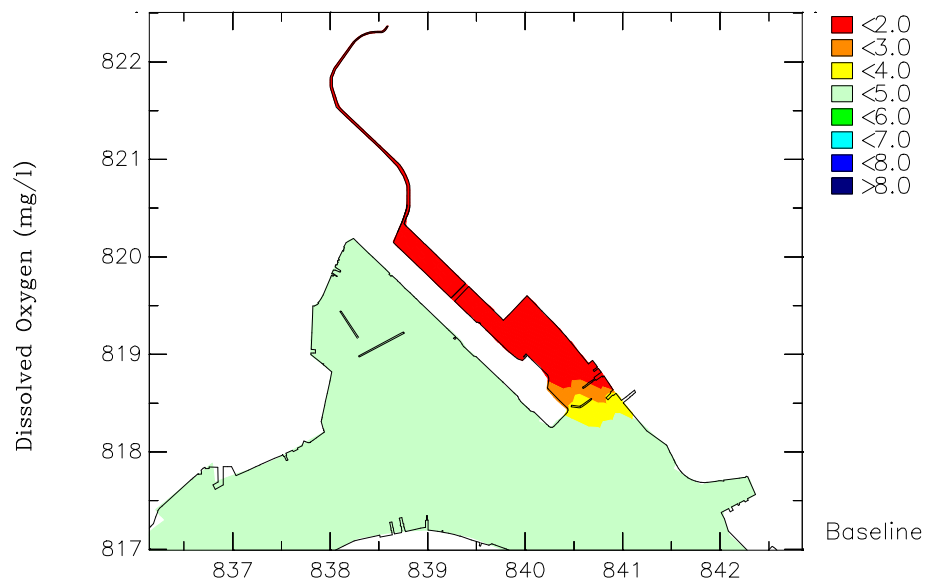
OCT 2007

Appendix

MAUNSELL | AECOM

/WQ/Detailed/plot

Annual-WQ-v2.ssn



Agreement No. CE 35/2006(CE) Kai Tak Development Engineering Study cum Design and Construction of Advance Works – Investigation, Design and Construction

10 Percentile Bottom Dissolved Oxygen

Upper: Unmitigated Scenario; Middle: Mitigated Scenario (with 400m Opening); Lower: Mitigated Scenario (with 600mGap)

Annual

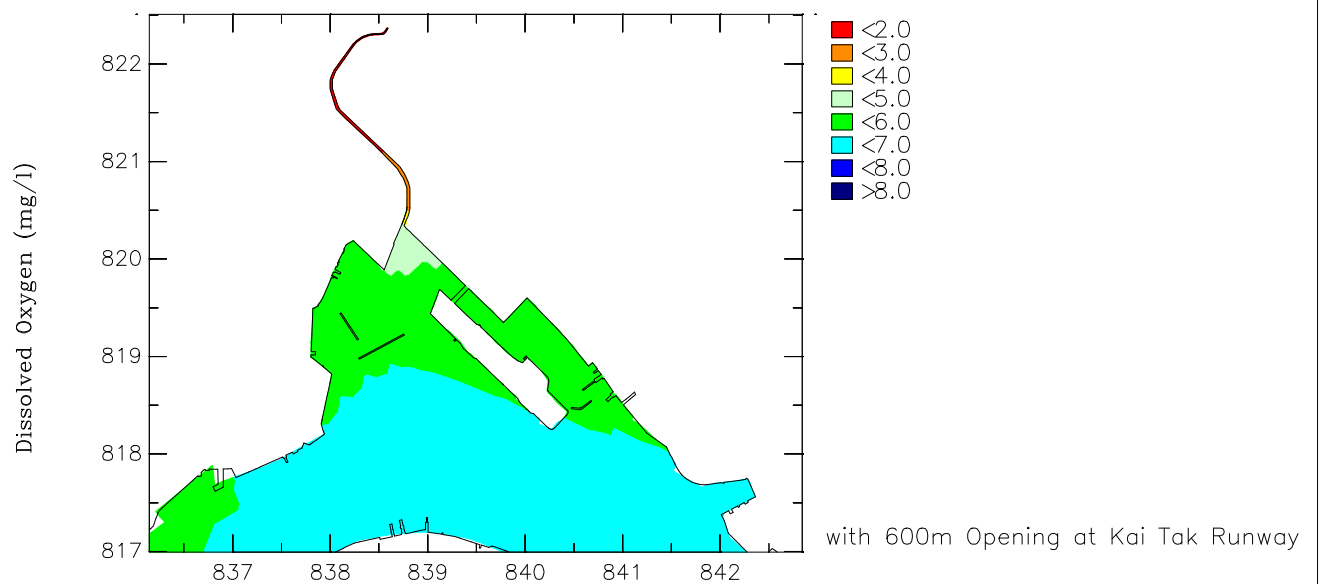
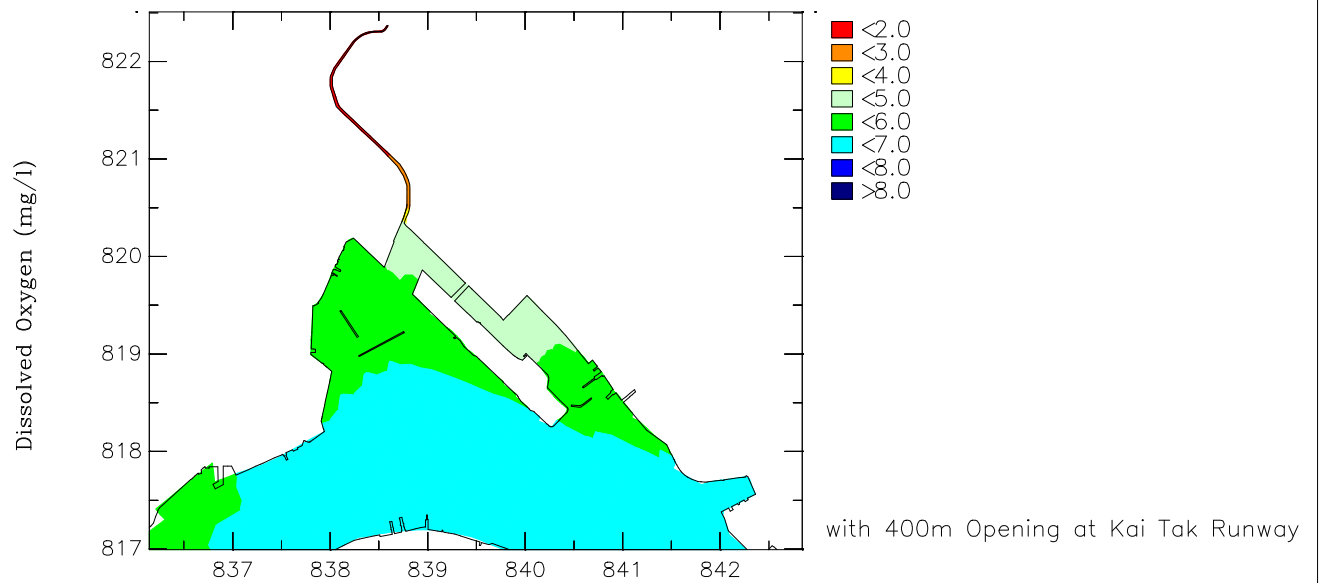
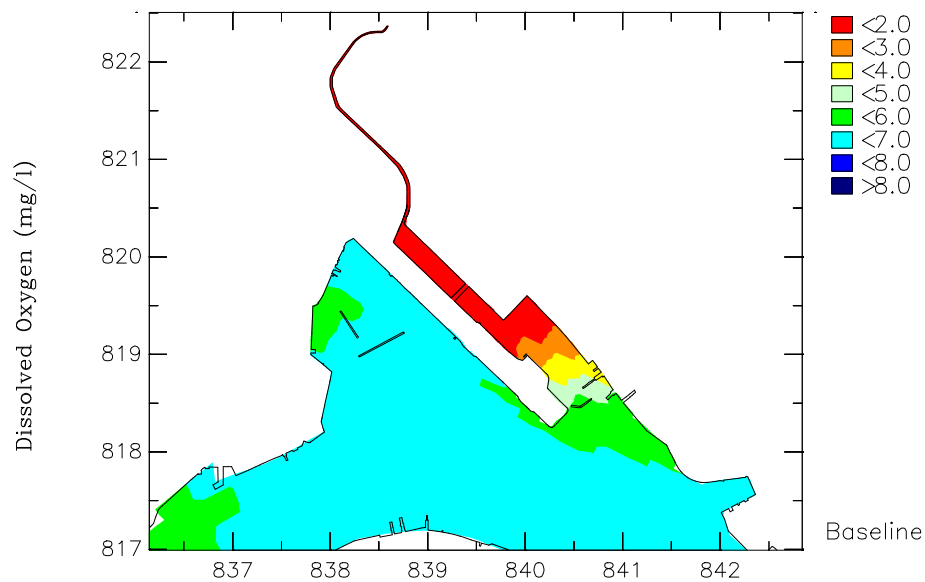
OCT 2007

Appendix

MAUNSELL | AECOM

/WQ/Detailed/plot

Annual-WQ-v2.ssn



Agreement No. CE 35/2006(CE) Kai Tak Development Engineering Study cum Design and Construction of Advance Works – Investigation, Design and Construction

Mean Depth Averaged Dissolved Oxygen

Upper: Unmitigated Scenario; Middle: Mitigated Scenario (with 400m Opening); Lower: Mitigated Scenario (with 600mGap)

Annual

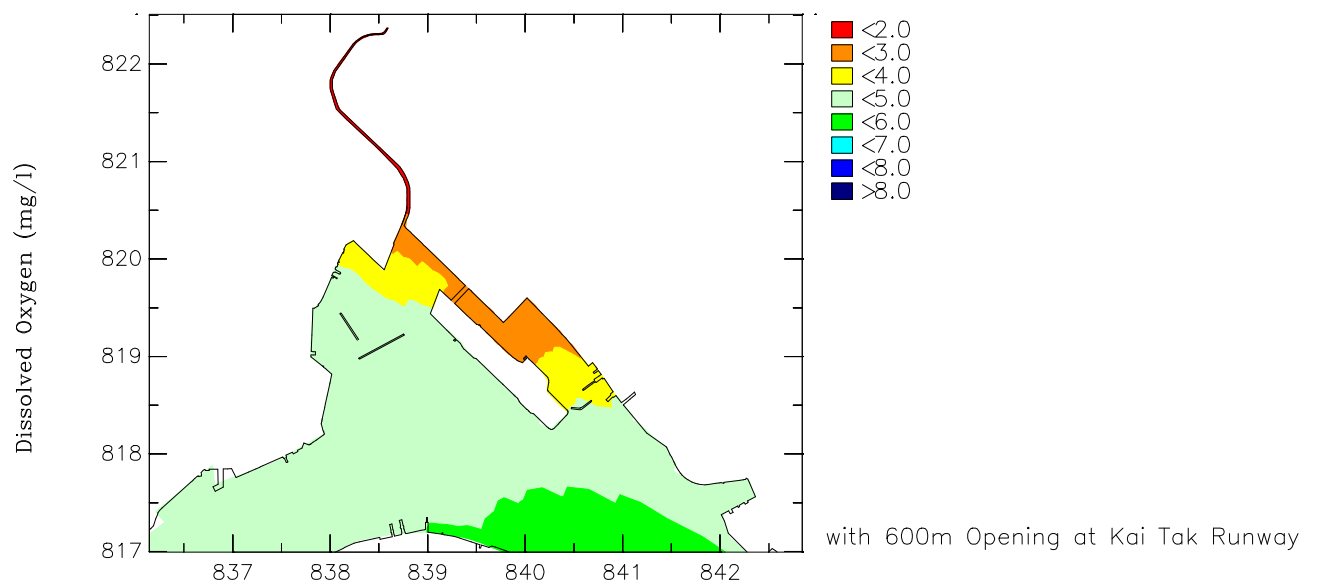
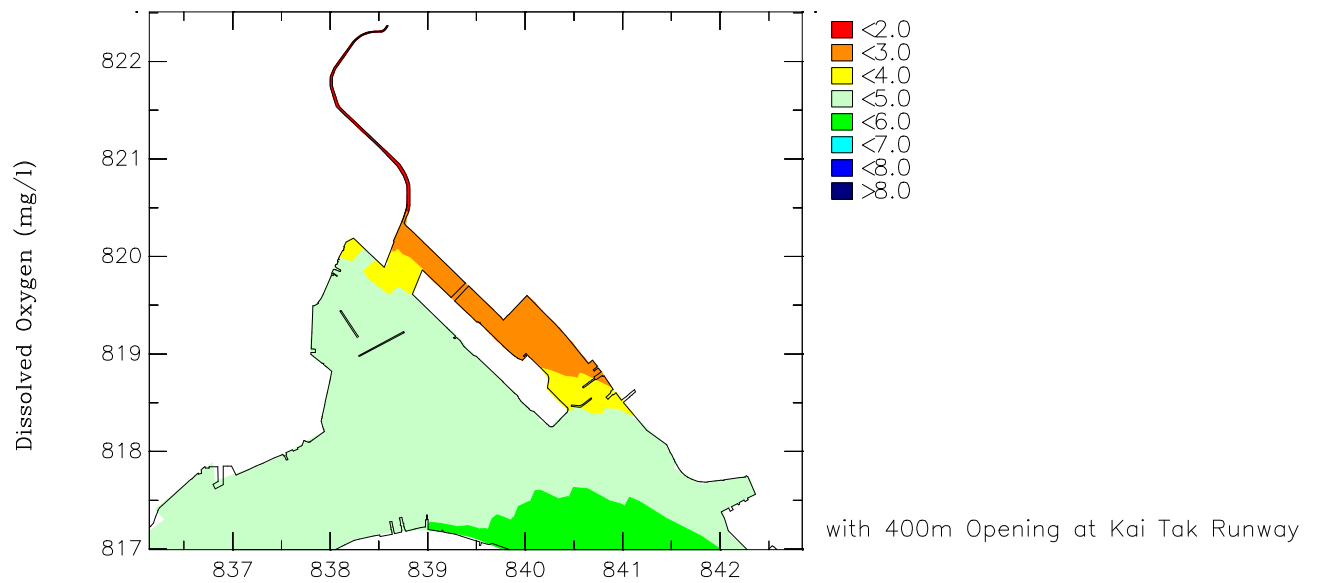
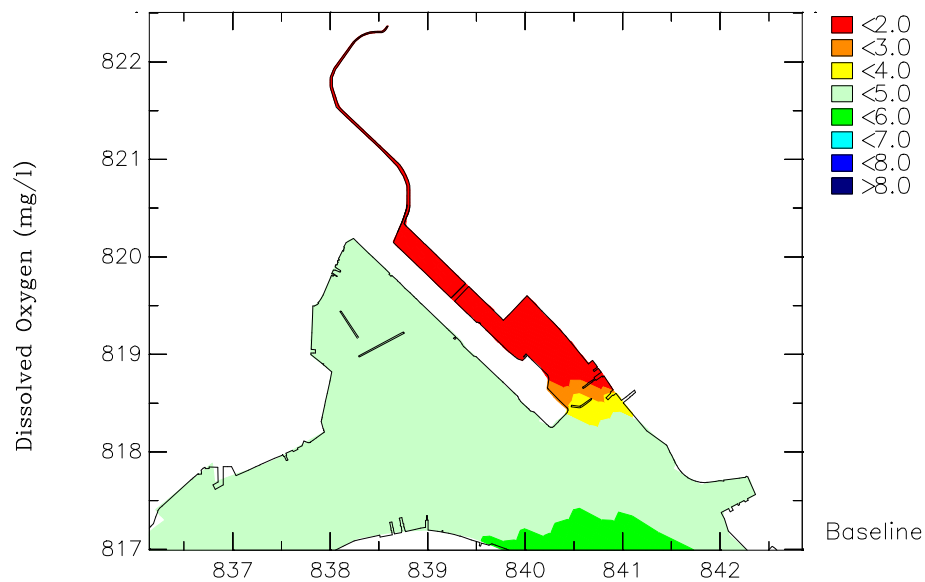
OCT 2007

Appendix

MAUNSELL | AECOM

/WQ/Detailed/plot

Annual-WQ-v2.ssn



Agreement No. CE 35/2006(CE) Kai Tak Development Engineering Study cum Design and Construction of Advance Works – Investigation, Design and Construction

10 Percentile Depth Averaged Dissolved Oxygen

Upper: Unmitigated Scenario; Middle: Mitigated Scenario (with 400m Opening); Lower: Mitigated Scenario (with 600mGap)

Annual

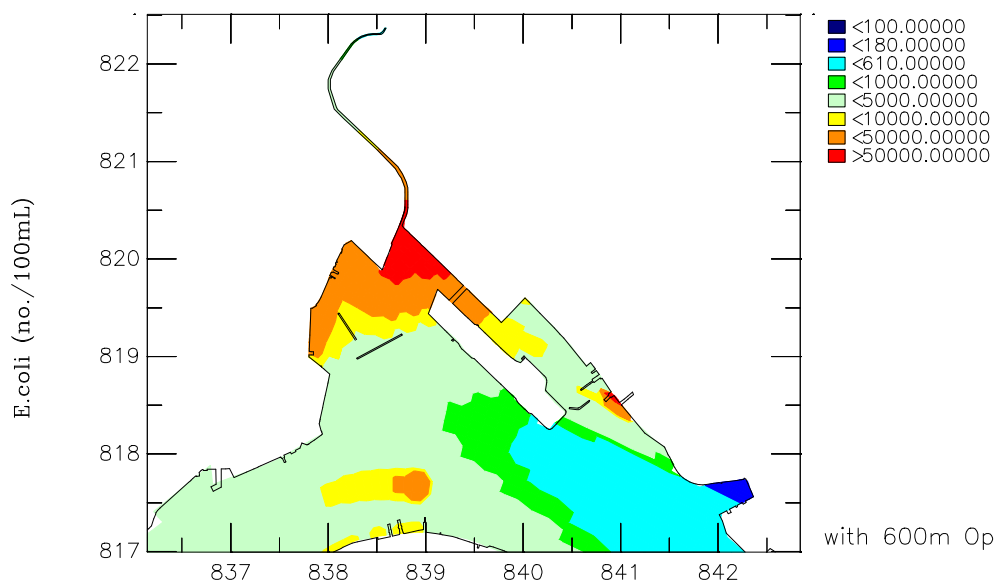
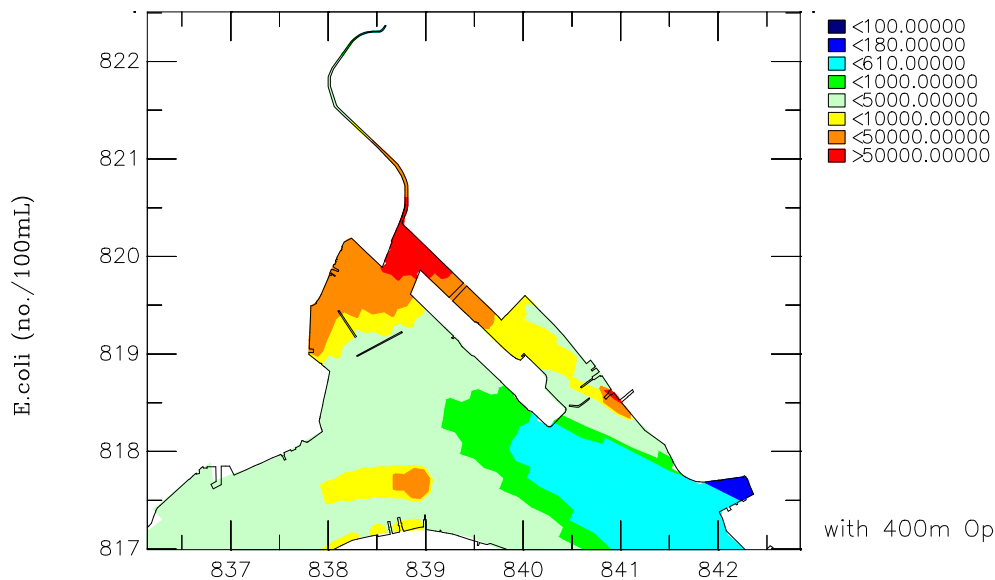
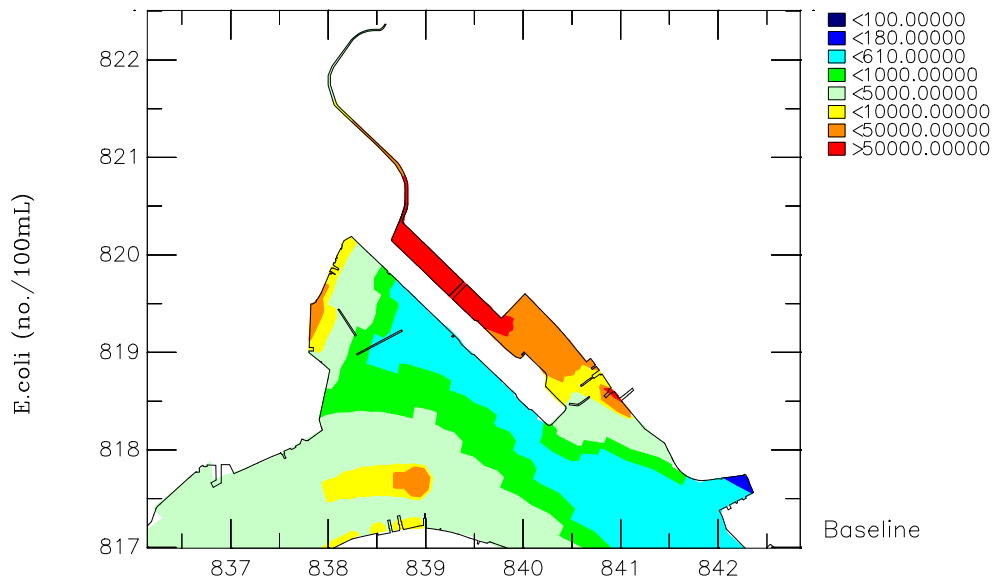
OCT 2007

Appendix

MAUNSELL | AECOM

/WQ/Detailed/plot

Annual-WQ-v2.ssn



Agreement No. CE 35/2006(CE) Kai Tak Development Engineering Study cum Design and Construction of Advance Works – Investigation, Design and Construction

Geometric Mean Depth Averaged E.coli

Upper: Unmitigated Scenario; Middle: Mitigated Scenario (with 400m Opening); Lower: Mitigated Scenario (with 600mGap)

Annual

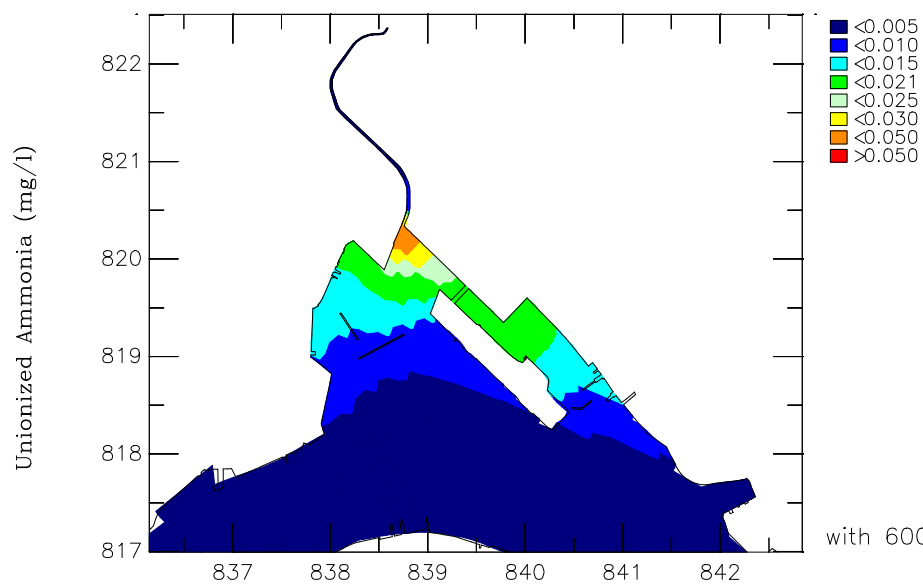
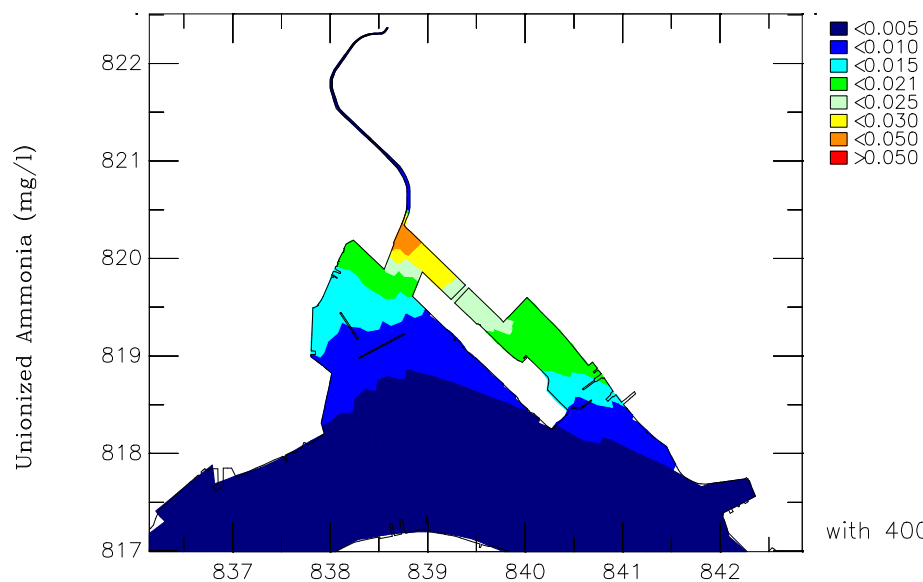
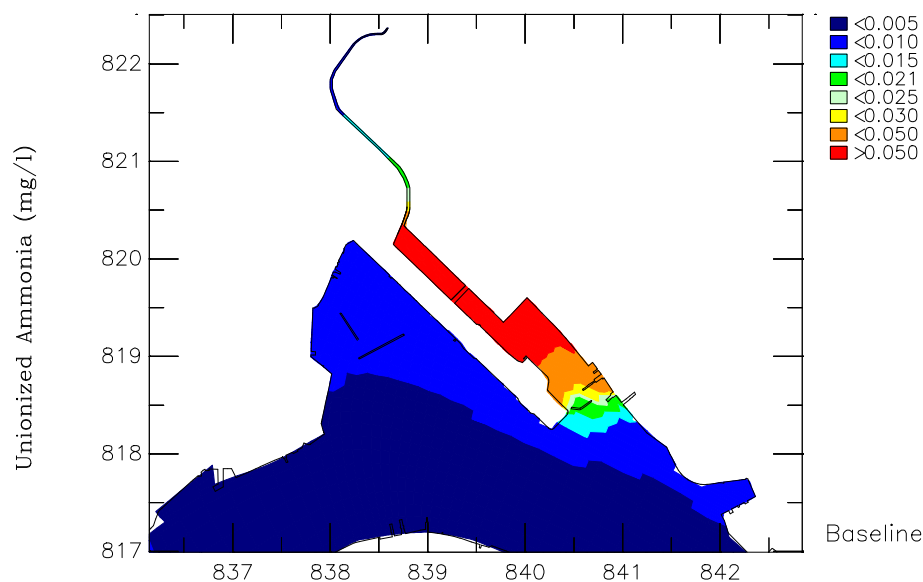
OCT 2007

Appendix

MAUNSELL | AECOM

/WQ/Detailed/plot

Annual-WQ.ssn



Agreement No. CE 35/2006(CE) Kai Tak Development Engineering Study cum Design and Construction of Advance Works – Investigation, Design and Construction

Mean Depth Averaged Unionized Ammonia

Upper: Unmitigated Scenario; Middle: Mitigated Scenario (with 400m Opening); Lower: Mitigated Scenario (with 600mGap)

Annual

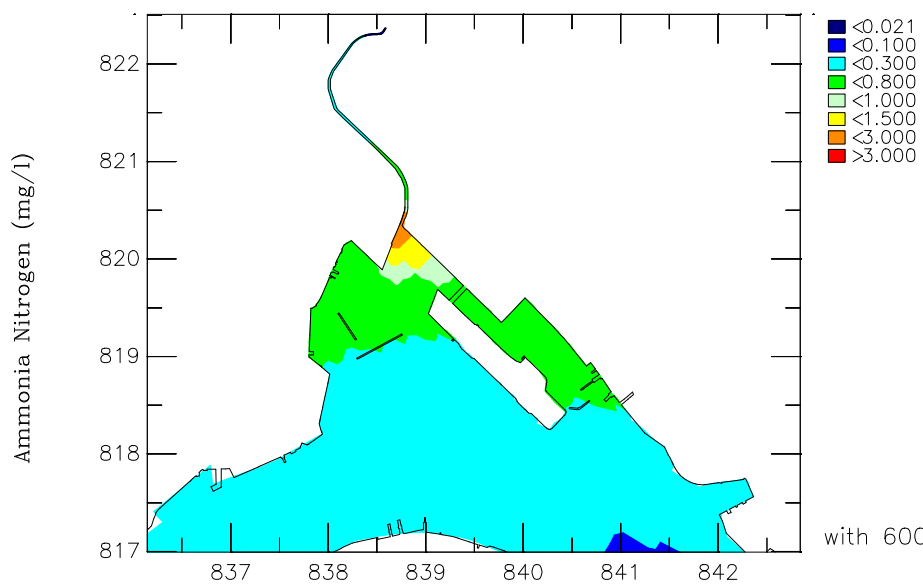
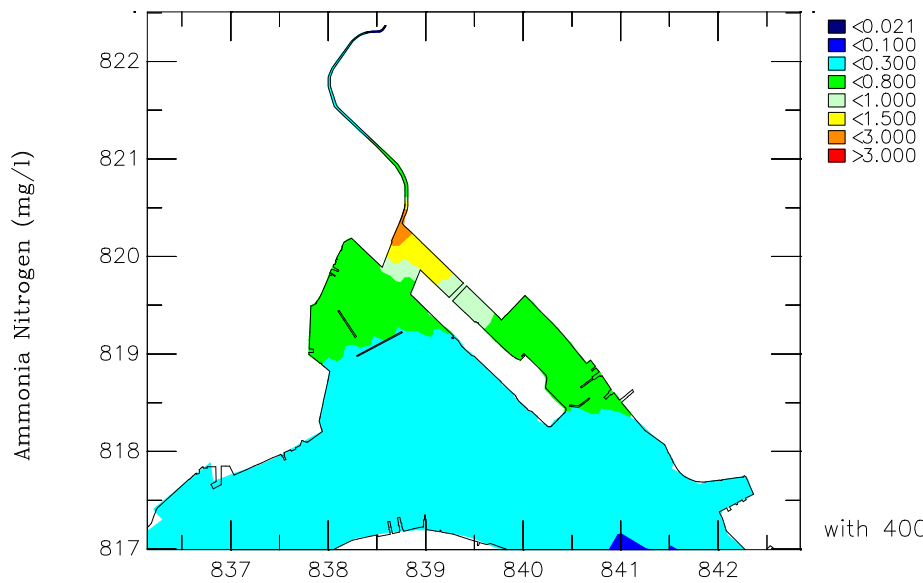
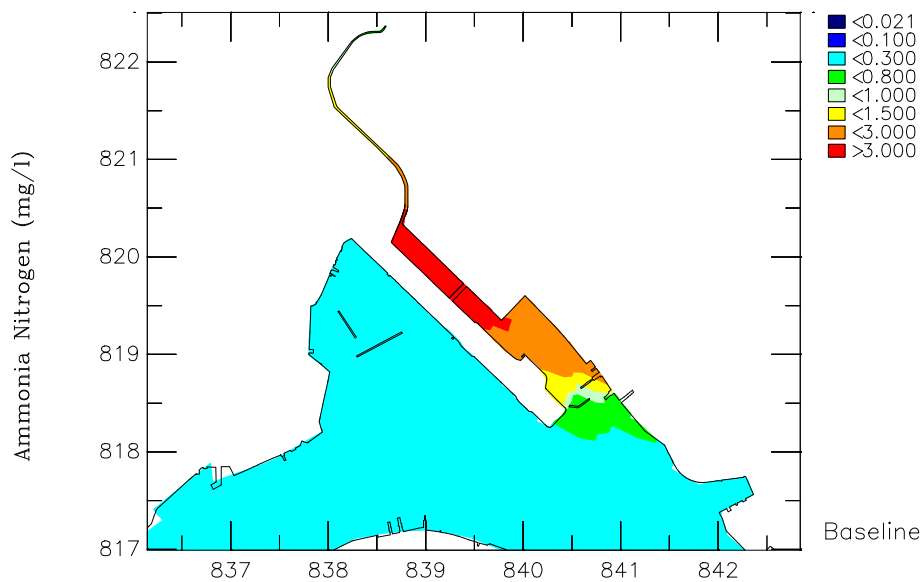
OCT 2007

Appendix

MAUNSELL | AECOM

/WQ/Detailed/plot

Annual-WQ.ssn



Agreement No. CE 35/2006(CE) Kai Tak Development Engineering Study cum Design and Construction of Advance Works – Investigation, Design and Construction

Mean Depth Averaged Ammonia Nitrogen

Upper: Unmitigated Scenario; Middle: Mitigated Scenario (with 400m Opening); Lower: Mitigated Scenario (with 600mGap)

Annual

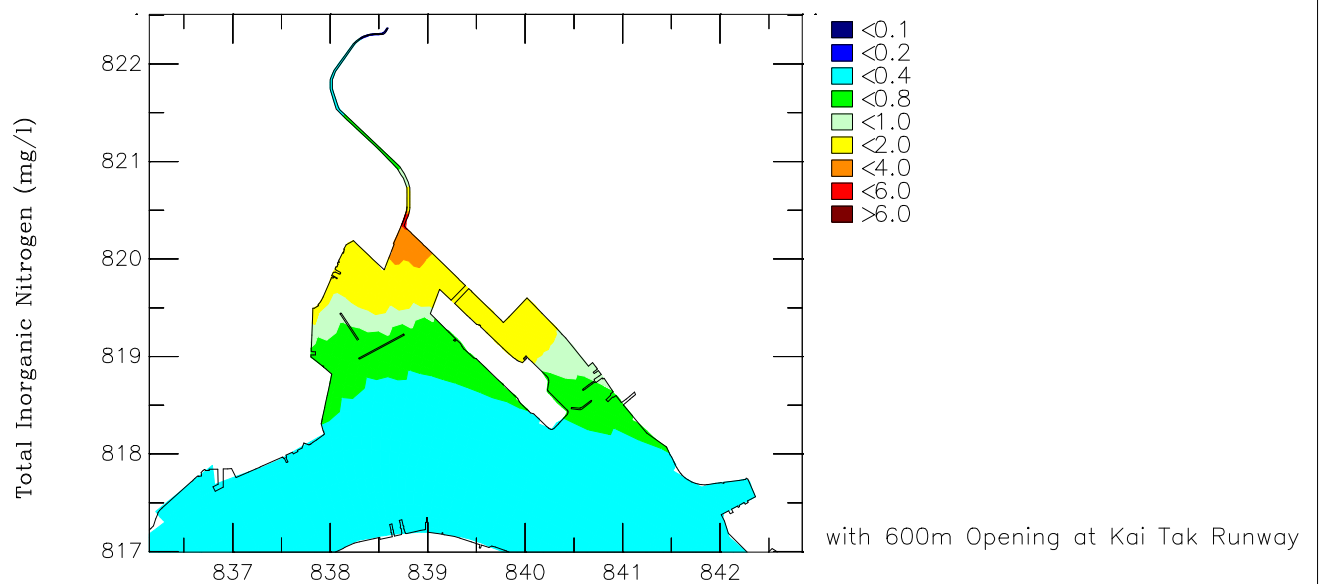
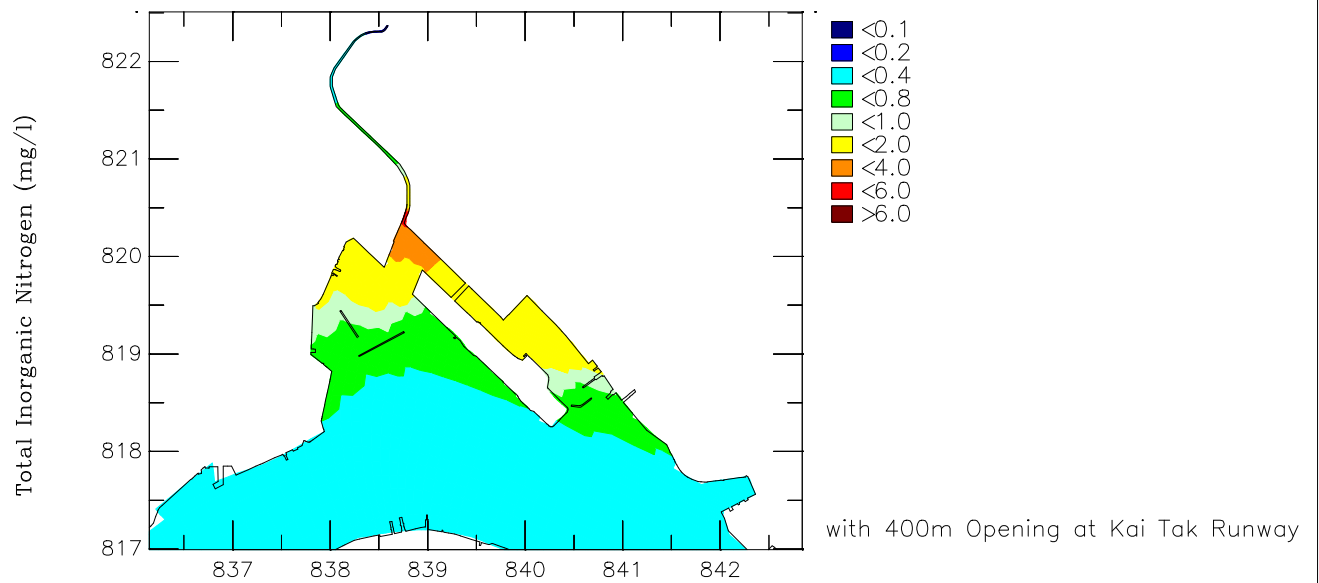
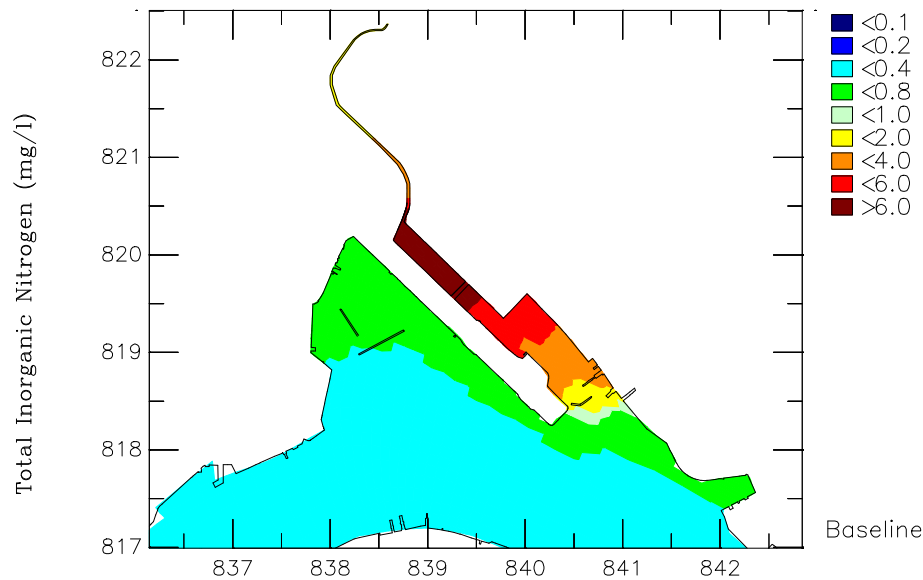
OCT 2007

Appendix

MAUNSELL | AECOM

/WQ/Detailed/plot

Annual-WQ.ssn



Agreement No. CE 35/2006(CE) Kai Tak Development Engineering Study cum Design and Construction of Advance Works – Investigation, Design and Construction

Mean Depth Averaged Total Inorganic Nitrogen

Upper: Unmitigated Scenario; Middle: Mitigated Scenario (with 400m Opening); Lower: Mitigated Scenario (with 600mGap)

Annual

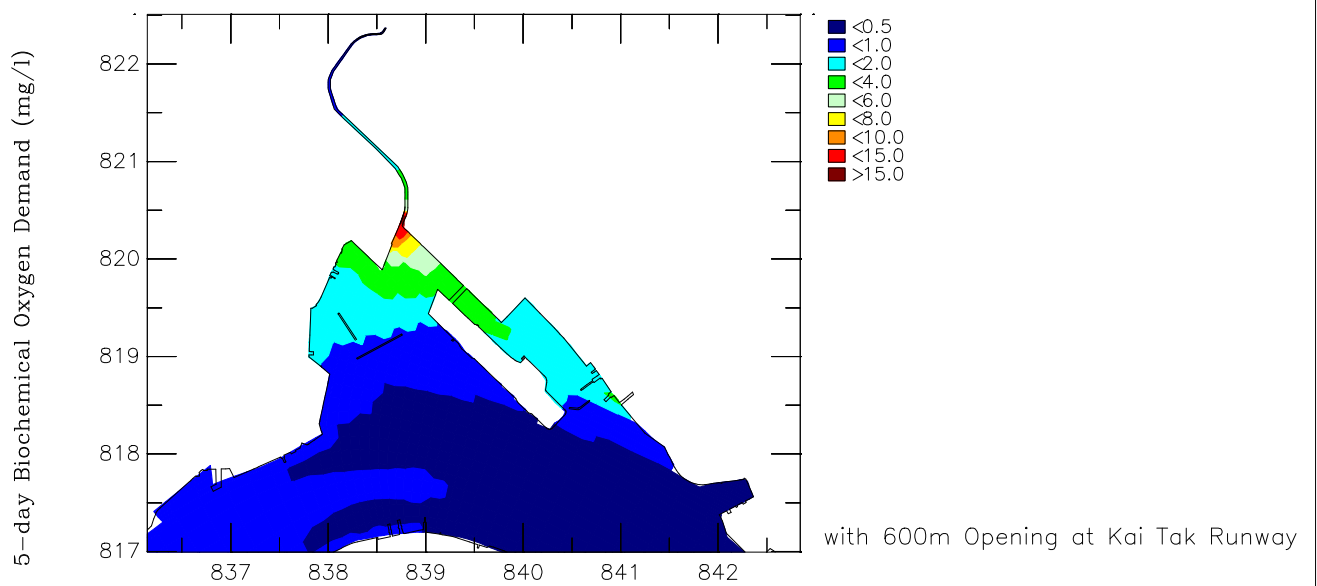
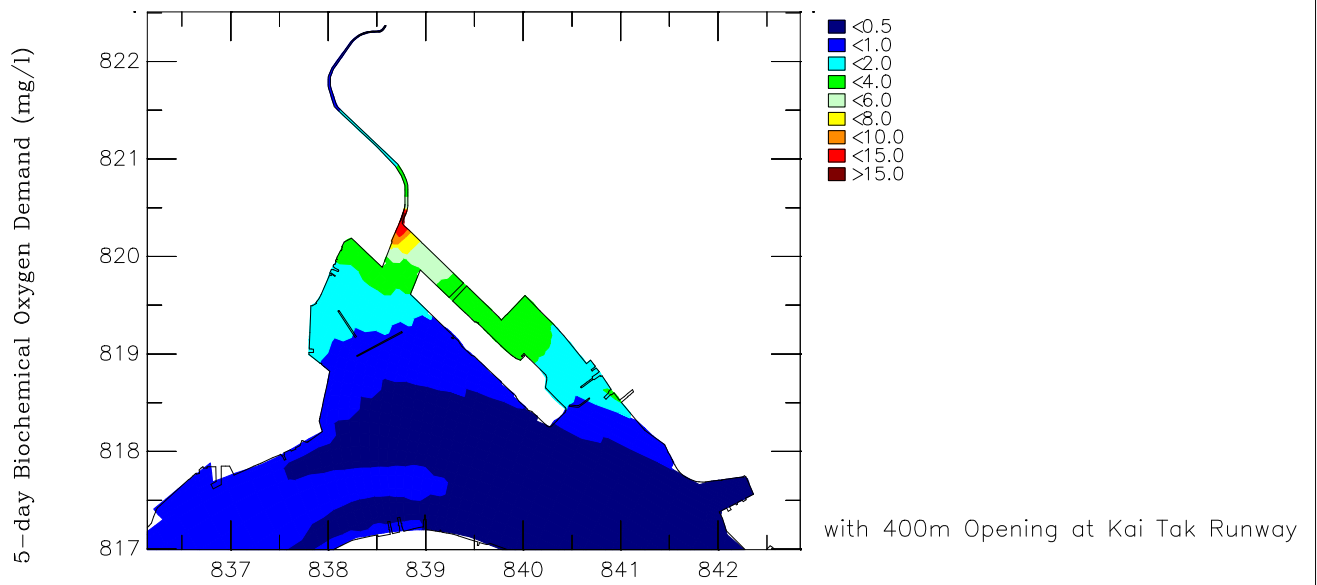
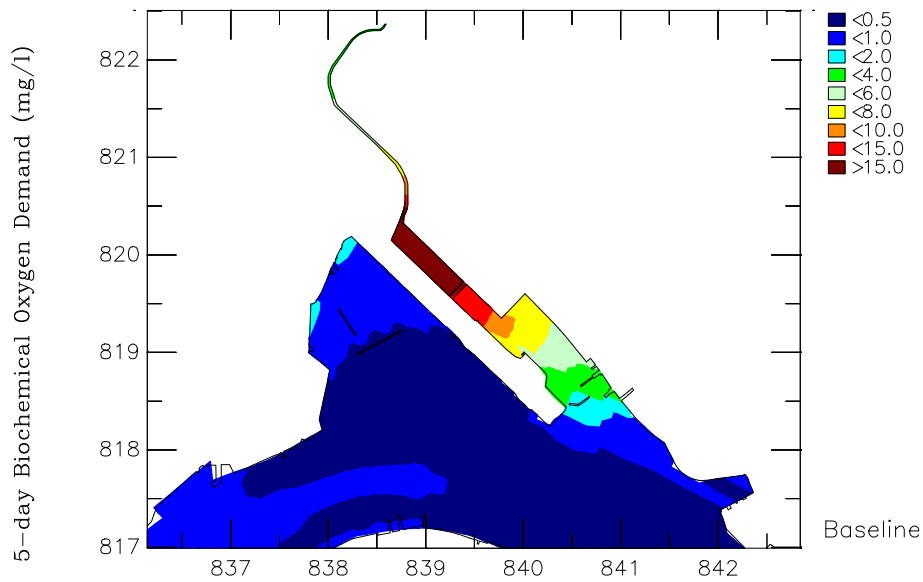
OCT 2007

Appendix

MAUNSELL | AECOM

/WQ/Detailed/plot

Annual-WQ.ssn



Agreement No. CE 35/2006(CE) Kai Tak Development Engineering Study cum Design and Construction of Advance Works – Investigation, Design and Construction

Mean Depth Averaged 5-day Biochemical Oxygen Demand

Upper: Unmitigated Scenario; Middle: Mitigated Scenario (with 400m Opening); Lower: Mitigated Scenario (with 600mGap)

Annual

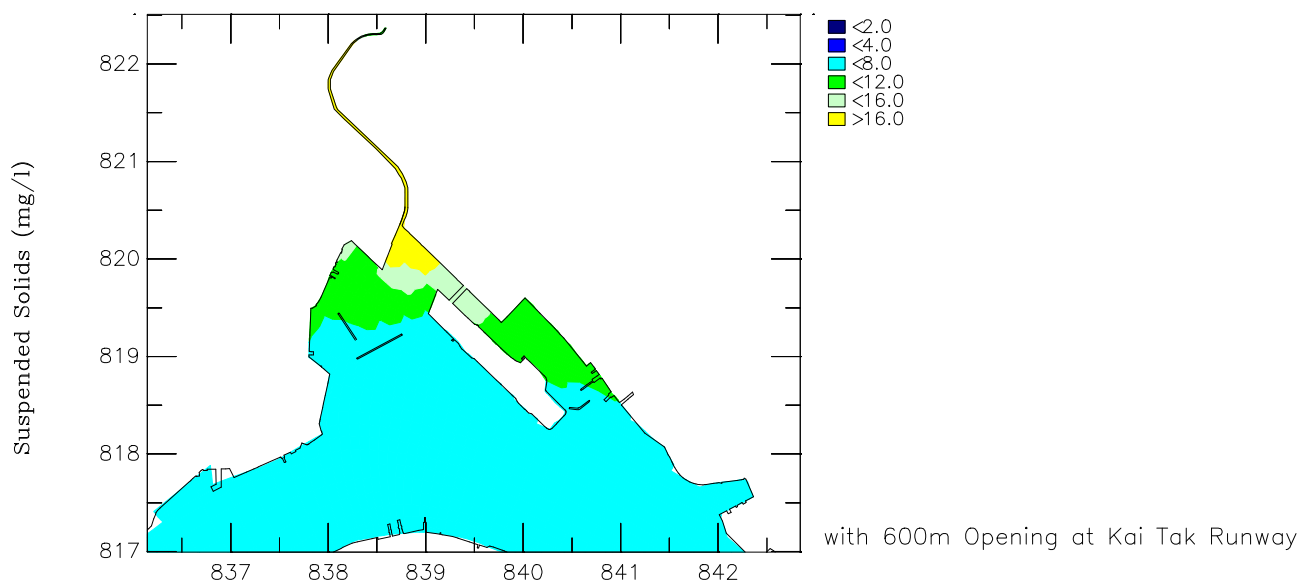
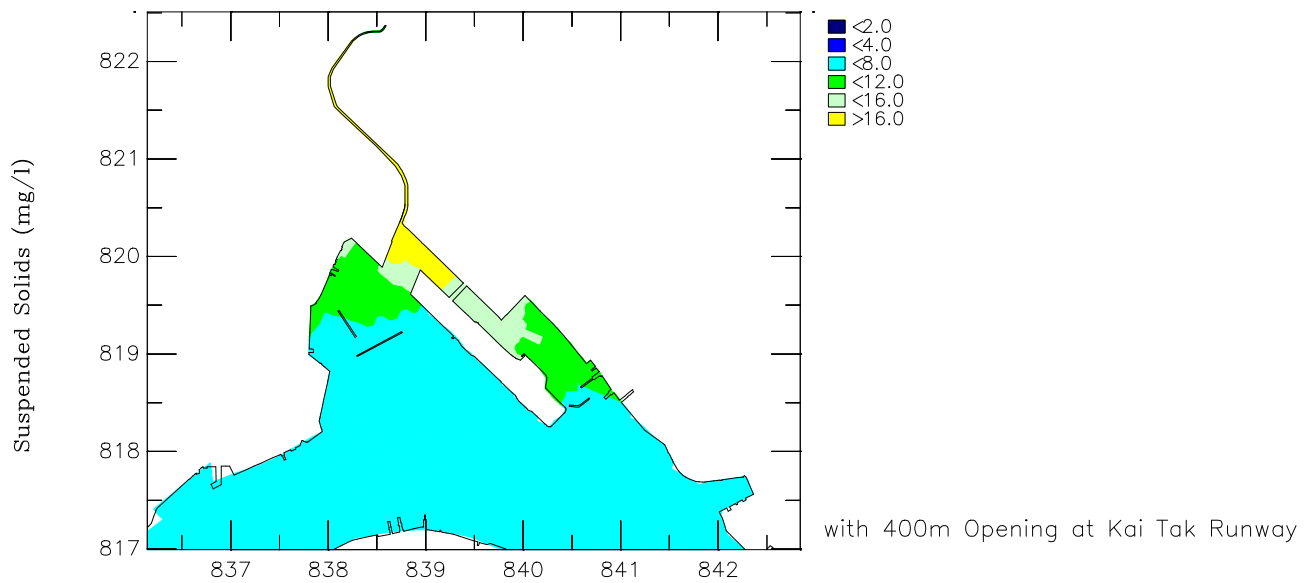
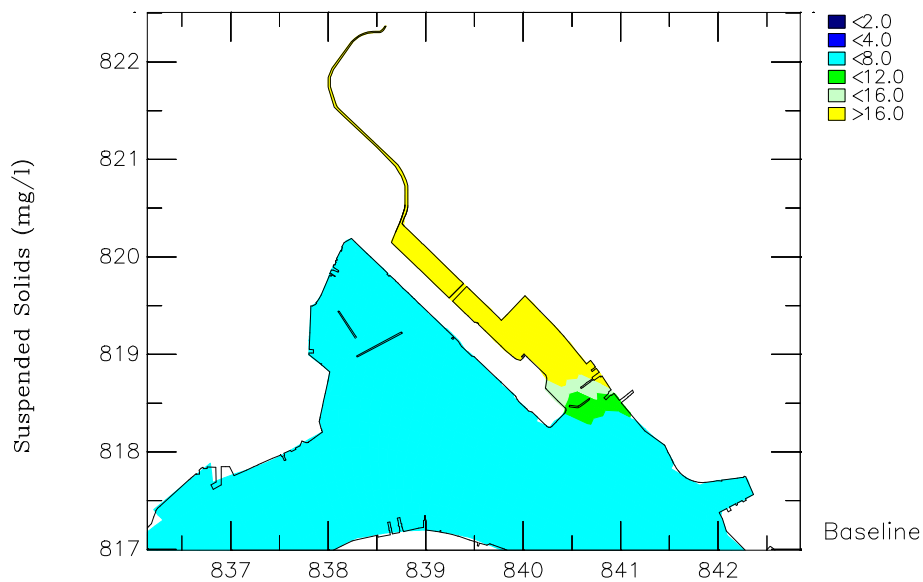
OCT 2007

Appendix

MAUNSELL | AECOM

/WQ/Detailed/plot

Annual-WQ.ssn



Agreement No. CE 35/2006(CE) Kai Tak Development Engineering Study cum Design and Construction of Advance Works – Investigation, Design and Construction

Mean Depth Averaged Suspended Solids

Upper: Unmitigated Scenario; Middle: Mitigated Scenario (with 400m Opening); Lower: Mitigated Scenario (with 600mGap)

Annual

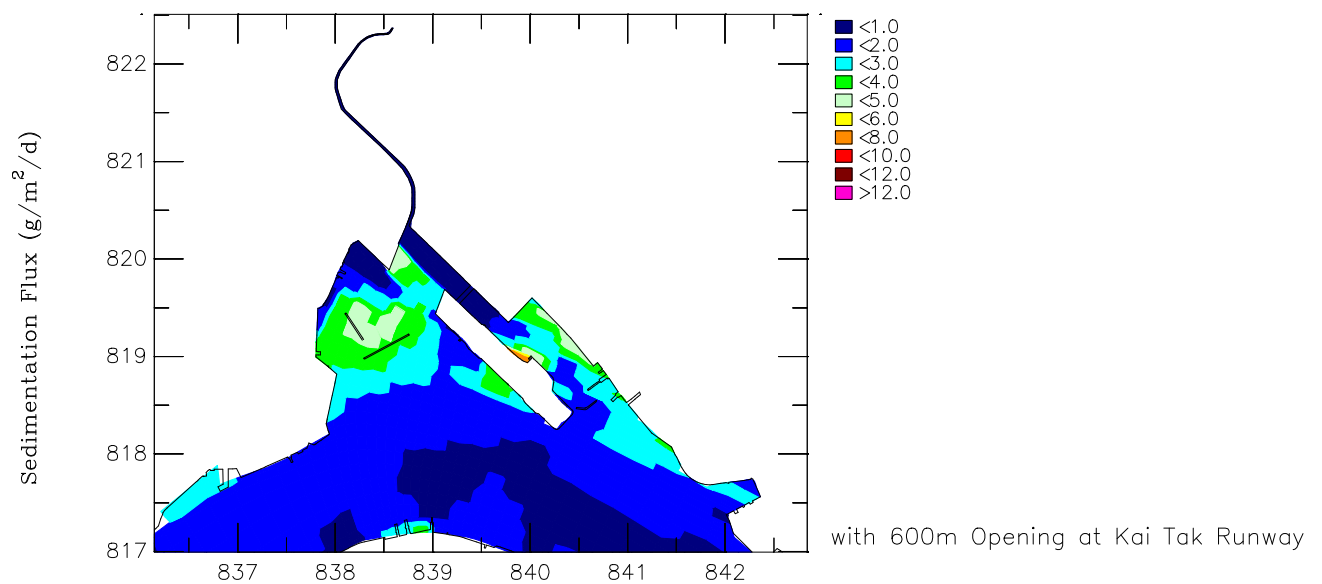
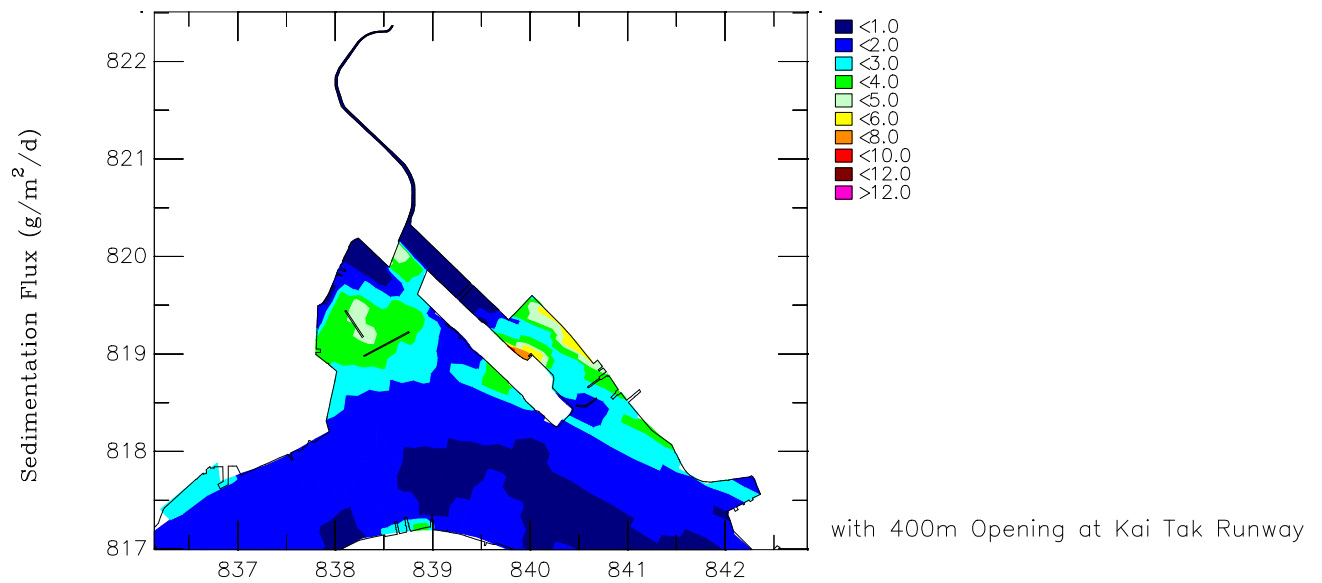
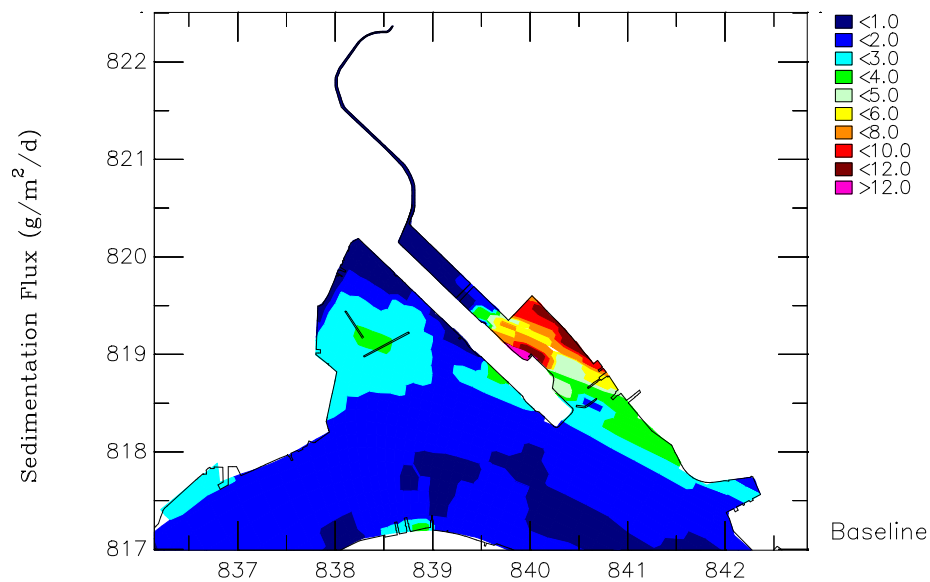
OCT 2007

Appendix

MAUNSELL | AECOM

/WQ/Detailed/plot

Annual-WQ.ssn



Agreement No. CE 35/2006(CE) Kai Tak Development Engineering Study cum Design and Construction of Advance Works – Investigation, Design and Construction

Mean Sedimentation Flux

Upper: Unmitigated Scenario; Middle: Mitigated Scenario (with 400m Opening); Lower: Mitigated Scenario (with 600mGap)

Annual

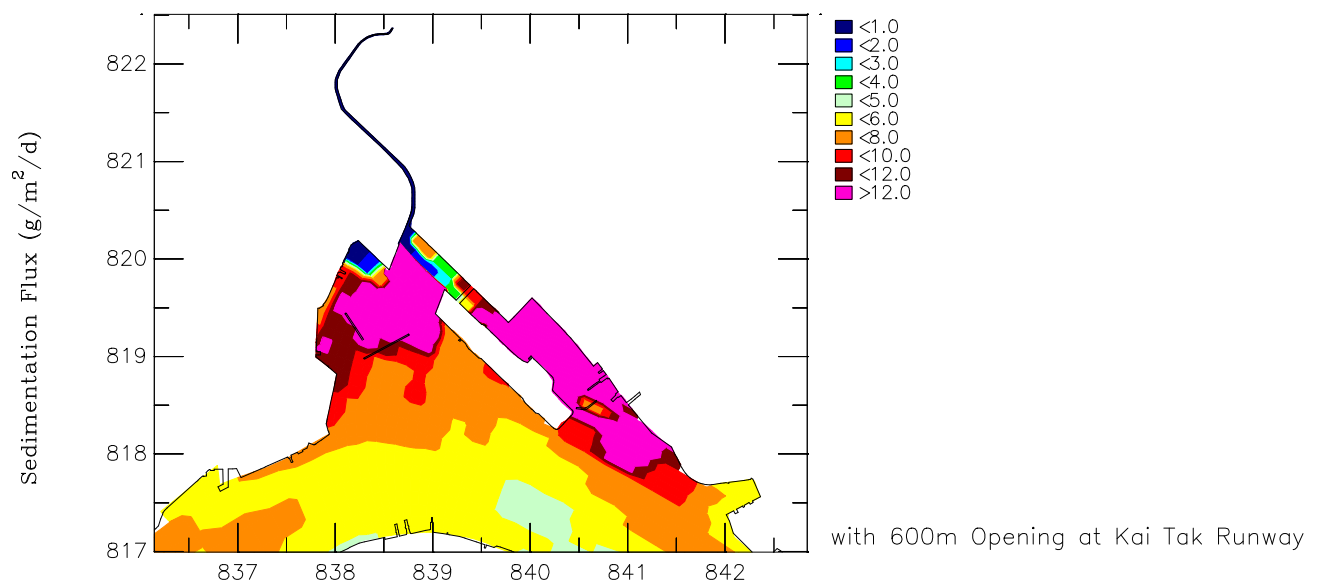
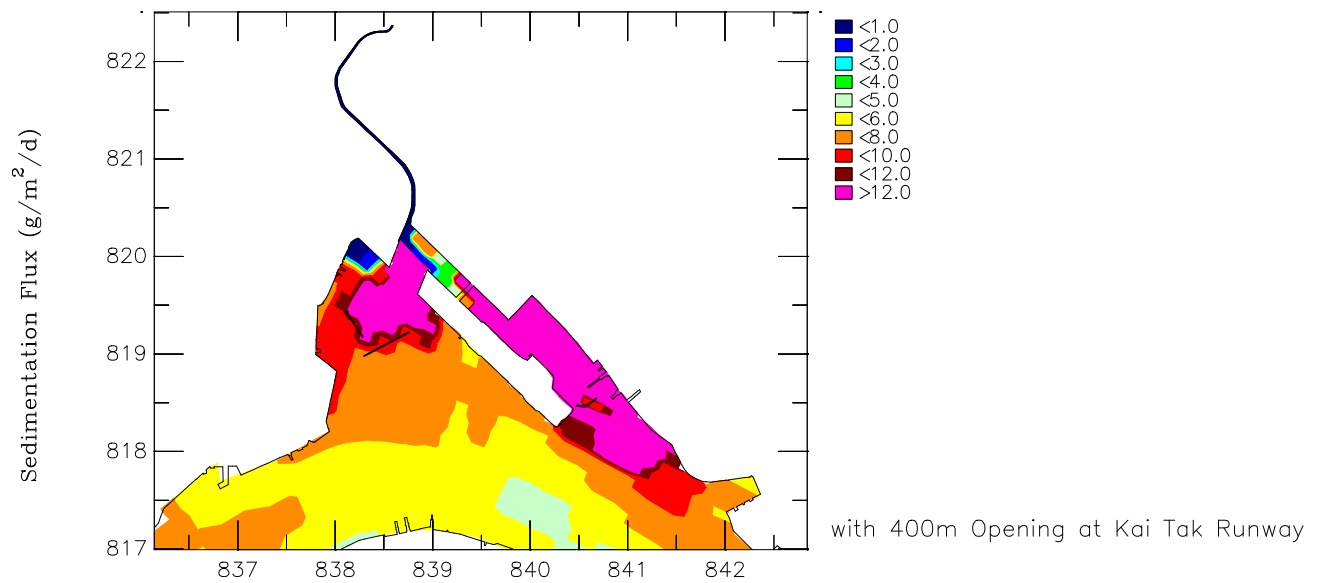
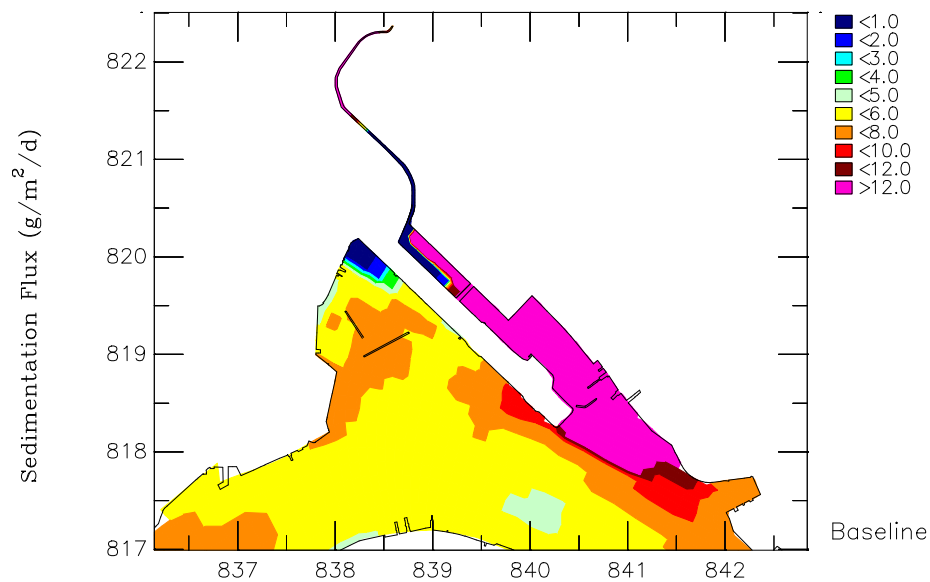
OCT 2007

Appendix

MAUNSELL | AECOM

/WQ/Detailed/plot

Annual-WQ.ssn



Agreement No. CE 35/2006(CE) Kai Tak Development Engineering Study cum Design and Construction of Advance Works – Investigation, Design and Construction

Maximum Sedimentation Flux

Upper: Unmitigated Scenario; Middle: Mitigated Scenario (with 400m Opening); Lower: Mitigated Scenario (with 600mGap)

Annual

OCT 2007

Appendix

MAUNSELL | AECOM

/WQ/Detailed/plot

Annual-WQ.ssn