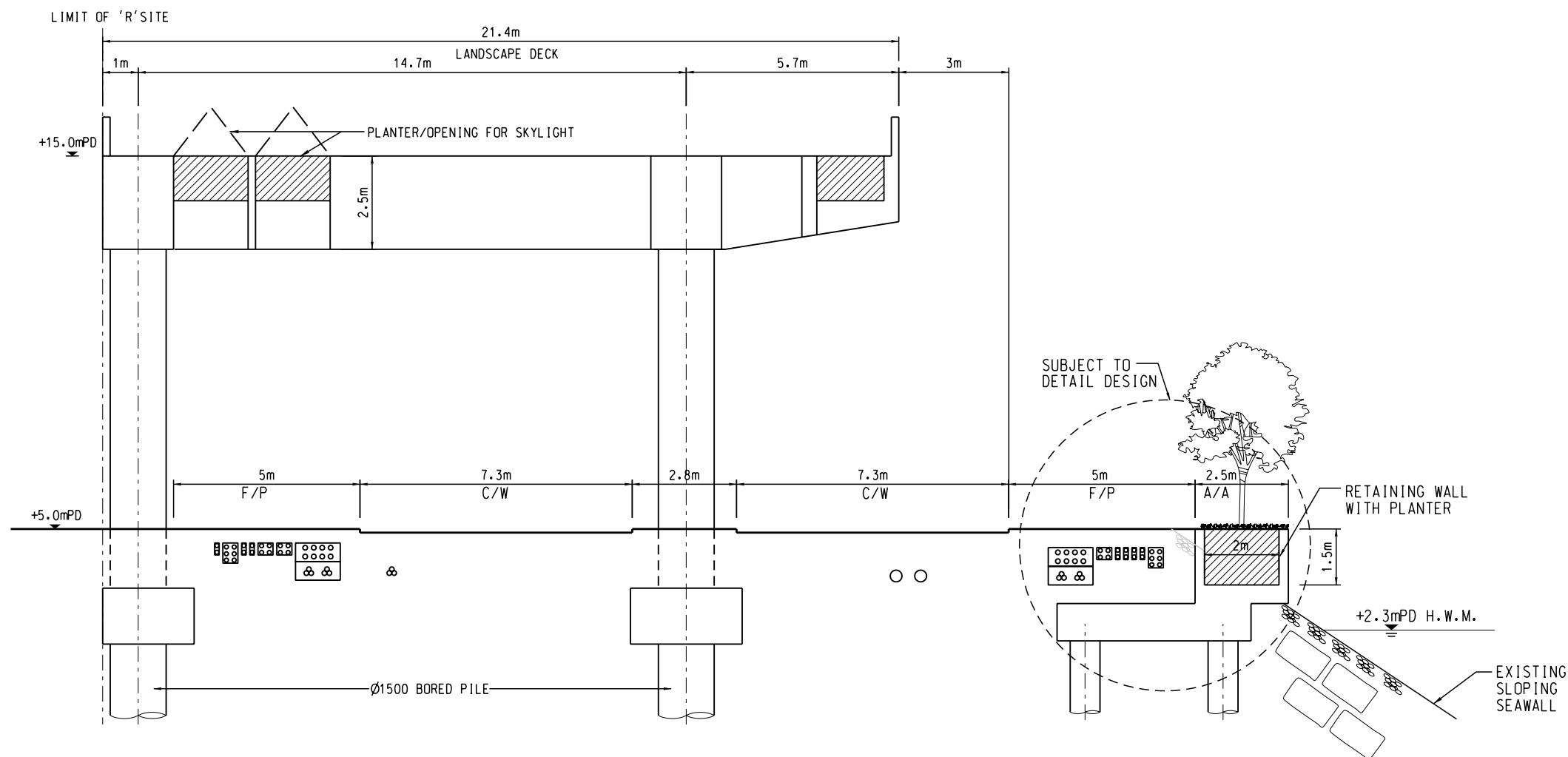


- NOTES:
- 1. UTILITY HIGHLIGHTED IN BLUE COLOUR TO BE LAID UNDER PHASE 1 CONTRACT.
 - 2. UTILITY HIGHLIGHTED IN GREEN COLOUR TO BE LAID UNDER PHASE 2 CONTRACT.



SECTION A - A

08/02/2008
C:\ENR2

MAUNSELL | AECOM
Maunsell Consultants Asia Ltd

AGREEMENT NO. CE 35/2006 (CE)
KAI TAK DEVELOPMENT ENGINEERING STUDY CUM DESIGN AND CONSTRUCTION OF ADVANCE WORKS-INVESTIGATION, DESIGN AND CONSTRUCTION

CROSS SECTION OF ROAD D3 AND PEDESTRIAN DECK ABOVE

SHEET 1 OF 2

SCALE	A3 1:150	DATE	MAR. 2008
CHECK	--	DRAWN	CC
JOB No.	60022408	DRAWING No.	FIG 3.0.19
		REV	B