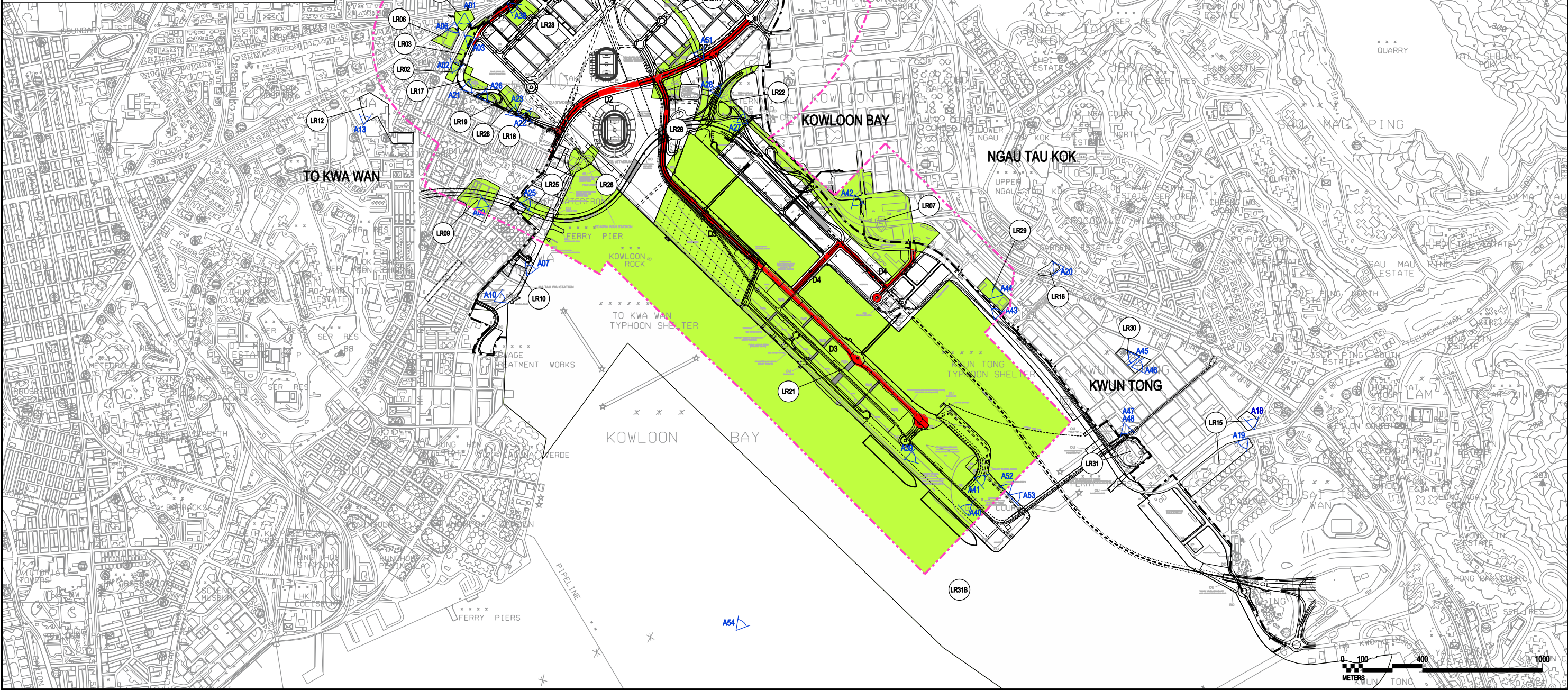


KEY FOR LANDSCAPE RESOURCES	
LR01	Olympic Garden
LR02	Sung Wong Toi Garden
LR03	Sung Wong Toi Playground
LR04A	Rest Garden near Nga Tsin Wai Road
LR04B	Amenity Areas near Sha Po Road
LR05	Shek Ku Lung Road Playground
LR06	Argyle Street Playground
LR07	Trees in Amenity Areas near Kai Fuk Road
LR08	Kai Tak East Playground
LR09	To Kwa Wan Recreation Ground
LR11	Kowloon Walled City Park and Carpenter Road Park
LR17	Trees near Aviation Club Buildings
LR18	Trees at the periphery of existing lot boundary along Sung Wong Toi Road
LR19	Trees in the Amenity Areas along Sung Wcng Toi Road
LR20	Trees in Amenity Areas of the interchange near Kwun Tong Road
LR21	Existing trees along the runway
LR22	Trees in Amenity Areas near the Interchange in Kowloon Bay
LR23	Trees in Amenity Areas of San Po Kong Interchange
LR24	Trees in Amenity Area near Rhythm Garden
LR25	Trees near Grand Wasterfront
LR26	Trees in Amenity Areas of Choi Hung Road PTI
LR27	Trees in planned open space near Rhythm Garden
LR28	Trees in North Apron of Former Airport
LR29	Hoi Bun Road Park
LR31A	Kai Tak Nullah
LR31B	Victoria Harbour

LEGEND	
	ENGINEERING REVIEW STUDY AREA BOUNDARY
	LANDSCAPE IMPACT STUDY BOUNDARY FOR DP1 (500m)
	DP1-DISTRIBUTOR ROADS
	LANDSCAPE RESOURCES
	LANDSCAPE RESOURCES TAG
	PHOTO TASKING POINT AND PHOTO NO.



PLOT FILE BY : 26/11/2008

**MAUNSELL | AECOM**  
Maunsell Consultants Asia Ltd

AGREEMENT NO. CE 35/2006 (CE)  
KAI TAK DEVELOPMENT ENGINEERING STUDY CUM DESIGN AND CONSTRUCTION OF ADVANCE WORKS-INVESTIGATION, DESIGN AND CONSTRUCTION

**BASELINE LANDSCAPE RESOURCES WITH DP1 - DISTRIBUTOR ROADS OVERLAID DURING CONSTRUCTION**

SCALE	A3 1:20000	DATE	MAY 2008
CHECK	JC	DRAWN	FL
JOB NO.	60022408	DRAWING NO.	FIGURE 2.4A
		REV	-