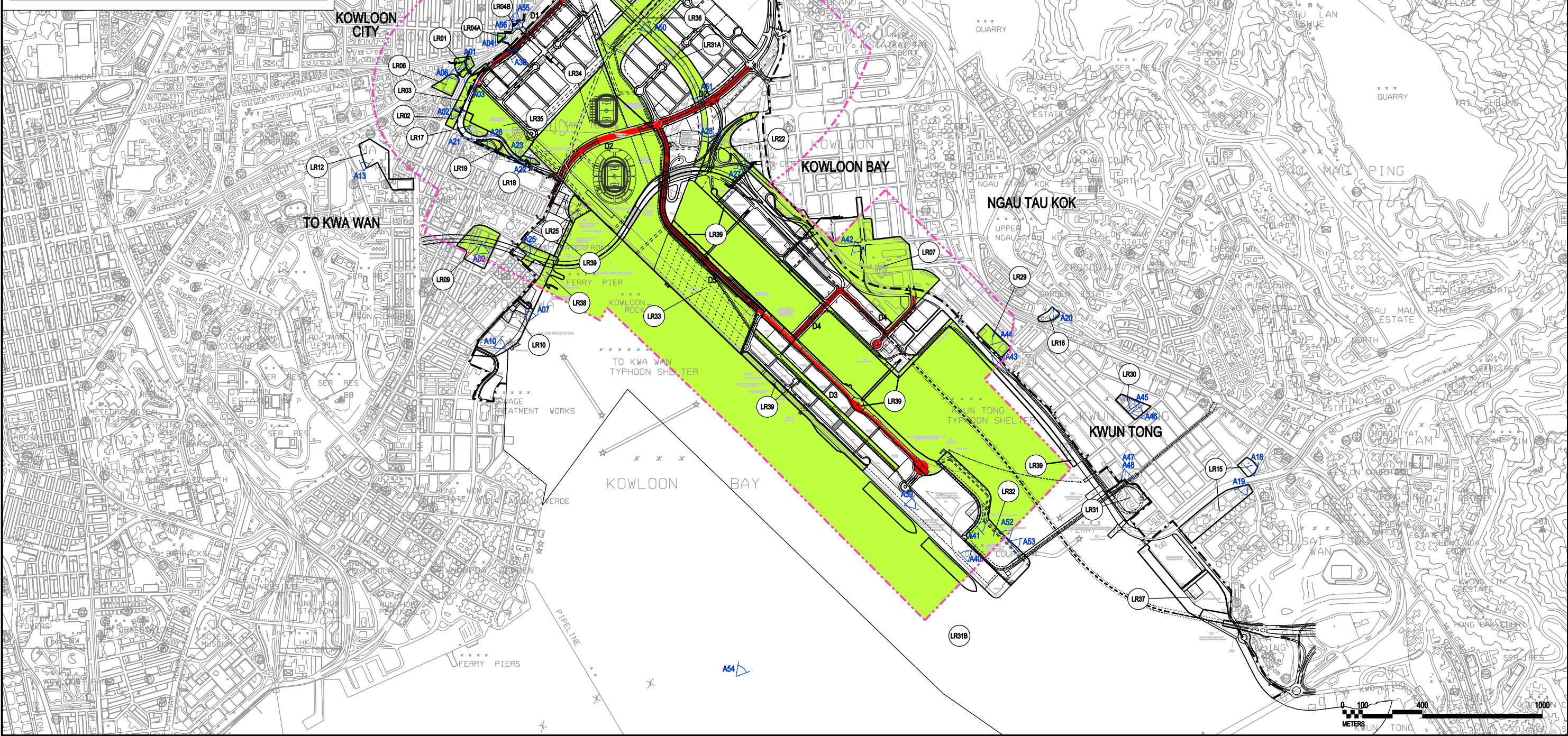


KEY FOR LANDSCAPE RESOURCES	
LR01	Olympic Garden
LR02	Sung Wong Toi Garden
LR03	Sung Wong Toi Playground
LR04A	Rest Garden and amenity area near Nga Tsin Wai Road
LR04B	Amenity area near Sha Po Road
LR05	Shek Ku Lung Road Playground
LR06	Argyle Street Playground
LR09	To Kwa Wan Recreation Ground
LR11	Kowloon Walled City Park and Carpenter Road Park
LR17	Trees near Aviation Club Buildings
LR18	Trees at the periphery of existing lot boundary along Sung Wong Toi Road
LR19	Trees in the Amenity Areas along Sung Wong Toi Road
LR22	Trees in Amenity Areas near the Interchange in Kowloon Bay
LR23	Trees in Amenity Areas of San Po Kong Interchange
LR25	Trees near Grant Waterfront
LR31A	Kai Tak Nullah
LR31B	Victoria Harbour
Planned LRs	
LR34	Planned Multi-purpose Stadium Complex Plaza
LR35	Planned Sung Wong Toi Park
LR36	Planned Station Square
LR38	Planned Chinese Cultural Garden



PLOT FILE BY : 26/11/2008

**MAUNSELL | AECOM**  
Maunsell Consultants Asia Ltd

AGREEMENT NO. CE 35/2006 (CE)  
KAI TAK DEVELOPMENT ENGINEERING STUDY CUM DESIGN AND CONSTRUCTION OF ADVANCE WORKS-INVESTIGATION, DESIGN AND CONSTRUCTION

**BASELINE LANDSCAPE RESOURCES WITH DP1 - DISTRIBUTOR ROAD OVERLAID DURING OPERATION**

SCALE	A3 1:20000	DATE	MAY 2008
CHECK	JC	DRAWN	FL
JOB NO.	60022408	DRAWING NO.	FIGURE 2.4B
		REV	-