

Leighton-China States Joint Venture

**Contract SCL1123 –
Exhibition Station & Western Approach
Tunnel**

Quarterly EM&A Report
for

FEP-03/376/2009

[Period from October to December 2024]

(January 2025)



Verified by: Claudine LEE

Position: Independent Environmental Checker

Date: 7 January 2025

Leighton-China State Joint Venture

**Contract SCL1123 –
Exhibition Station & Western Approach
Tunnel**

Quarterly EM&A Report

for

FEP-03/376/2009

[Period from October to December 2024]

(January 2025)

Verified by: FUNG Yiu Wah 

Position: Environmental Team Leader

Date: 8 January 2025

Leighton – China State J.V.**Shatin to Central Link -
Hung Hom to Admiralty Section****Works Contract 1123 -
CEDD Entrusted Work for Road P2 & other roads****Quarterly Environmental Monitoring
and Audit Report for****- October to December 2024 -**

[January 2025]

	Name	Signature
Prepared & Checked:	Kelvin Wu	
Reviewed, Approved & Certified:	Y W Fung (Contractor's Environmental Team Leader)	

Version: 0

Date: 3 January 2025

Disclaimer

This Environmental Monitoring and Audit Report is prepared for Leighton – China State J.V. and is given for its sole benefit in relation to and pursuant to SCL1123 and may not be disclosed to, quoted to or relied upon by any person other than Leighton – China State J.V. without our prior written consent. No person (other than Leighton – China State J.V. into whose possession a copy of this report comes may rely on this plan without our express written consent and Leighton – China State J.V. may not rely on it for any purpose other than as described above.

AECOM Asia Co. Ltd.

12/F, Grand Central Plaza, Tower 2, 138 Shatin Rural Committee Road, Shatin, NT, Hong Kong

Tel: (852) 3922 9000

Fax: (852) 2317 7609

www.aecom.com

Table of Contents

	Page
EXECUTIVE SUMMARY	1
1 INTRODUCTION.....	2
1.1 Purpose of the Report	2
1.2 Report Structure.....	2
2 PROJECT INFORMATION.....	3
2.1 Background	3
2.2 Site Description	3
2.3 Construction Programme and Activities	3
2.4 Project Organisation.....	4
2.5 Status of Environmental Licences, Notification and Permits	4
3 ENVIRONMENTAL MONITORING REQUIREMENT	5
3.1 Construction Dust Monitoring.....	5
3.2 Construction Noise Monitoring	5
3.3 Landscape and Visual Monitoring	6
4 IMPLEMENTATION STATUS OF ENVIRONMENTAL MITIGATION MEASURES.....	7
5 MONITORING RESULTS	8
5.1 Construction Dust Monitoring.....	8
5.2 Regular Construction Noise Monitoring	8
5.3 Waste Management	8
5.4 Landscape and Visual.....	8
6 ENVIRONMENTAL SITE INSPECTION AND AUDIT.....	9
7 ENVIRONMENTAL NON-CONFORMANCE.....	9
7.1 Summary of Monitoring Exceedances	9
7.2 Summary of Environmental Non-Compliance.....	9
7.3 Summary of Environmental Complaints.....	9
7.4 Summary of Environmental Summon and Successful Prosecutions.....	9
8 CONCLUSIONS AND RECOMMENDATIONS	10
8.1 Conclusions.....	10
8.2 Recommendations	10

List of Tables

Table 2.1	Contact Information of Key Personnel
Table 2.2	Status of Environmental Licenses, Notifications and Permits
Table 3.1	Locations of Construction Dust Monitoring Station
Table 3.2	Noise Monitoring Parameters, Frequency and Duration
Table 3.3	Noise Monitoring Station during the Construction Phase
Table 3.4	Landscape and Visual Monitoring Task and Frequency
Table 4.1	Status of Required Submission under Further Environmental Permit
Table 6.1	Observations and Recommendations of Site Audit

List of Figures

Figure 1.1	Site Layout Plan of CEDD Entrusted Works under Contract 1123
Figure 3.1	Air Quality and Noise Monitoring Locations for CEDD Entrusted Works

List of Appendices

Appendix A	Project Organisation Structure
Appendix B	Implementation Schedule of Environmental Mitigation Measures
Appendix C	Cumulative Statistics on Complaints, Notification of Summons and Successful Prosecutions

EXECUTIVE SUMMARY

Shatin to Central Link Contract 1123 – CEDD Entrusted Work for Road P2 & other roads (hereafter called “the Project”) covers part of the construction of CEDD entrusted work under the granted Further Environmental Permit: FEP-03/376/2009.

The Project comprises the construction of Road P2 and other roads.

The EM&A programme commenced on 25 January 2021. The impact EM&A for the Project includes air quality and noise monitoring.

As confirmed with the Contractor, the major construction activities under FEP-03/376/2009 have been completed and with respect to the joint inspection conducted with IEC on 11 October 2023. The Contractor, ET and IEC share the view that there is no adverse environmental impact of remaining works under FEP-03/376/2009, hence the respective weekly environmental site inspection and environmental monitoring for air quality and noise during the construction phase were suspended from 1 November 2023 onwards as agreed with IEC.

In accordance with the updated EM&A Manual clause 8.2.1, the monitoring of the implementation and maintenance of landscape mitigation measures during the 12-month establishment period for FEP-03/376/2009 was commenced upon the completion of construction activities. As confirmed with the Contractor, the major construction activities under FEP-03/376/2009 have been completed. Handover progress of the landscape and visual to CEDD was conducted in December 2023 and completed in January 2024, hence the monitoring during the establishment period was commenced in January 2024 at a frequency of quarterly basis. The monitoring on the landscape and visual implementation in establishment period was scheduled in February, May, August and November 2024 tentatively.

This report documents the findings of EM&A works conducted in the period between October to December 2024.

Breaches of Action and Limit Levels for Air Quality

Air quality monitoring was suspended in the reporting period.

Breaches of Action and Limit Levels for Noise

Noise monitoring was suspended in the reporting period.

Complaint, Notification of Summons and Successful Prosecution

No complaint, notification of summons and successful prosecution were received in the reporting period.

Reporting Changes

There was no reporting change in the reporting period.

1 INTRODUCTION

Leighton – China State Joint Venture (JV) was commissioned by MTR as the Civil Contractor for CEDD Entrusted Works under Contract 1123. AECOM Asia Company Limited (AECOM) was appointed by JV as the Environmental Team (ET) to undertake the Environmental Monitoring and Audit (EM&A) programme during construction phase of the Project.

1.1 Purpose of the Report

- 1.1.1 This is the 15th quarterly EM&A Report which summaries the impact monitoring results and audit findings for the Project during the reporting period between October to December 2024.

1.2 Report Structure

- 1.2.1 This monthly EM&A Report is organized as follows:

- Section 1: Introduction
- Section 2: Project Information
- Section 3: Environmental Monitoring Requirement
- Section 4: Implementation Status of Environmental Mitigation Measures
- Section 5: Monitoring Results
- Section 6: Environmental Site Inspection and Audit
- Section 7: Environmental Non-conformance
- Section 8: Conclusions and Recommendations

2 PROJECT INFORMATION

2.1 Background

- 2.1.1 Road P2 and other roads which are classified as primary/district distributor roads identified as DP2 which covered in the Environmental Permit No. EP-376/2009 in the approved Wan Chai Development Phase II (WDII) and Central – Wan Chai Bypass (CWB) comprising (i) a dual 2-lane primary distributor road, Road P2; and (ii) other new primary and district distributor roads connecting to the slip roads of the Central-Wan Chai Bypass.
- 2.1.2 The Environmental Impact Assessment Report for the Wan Chai Development Phase II and Central-Wan Chai Bypass (WDII&CWB) EIA Report (Register No. AEIAR-125/2008) which was approved on 11 December 2008 under the Environmental Impact Assessment Ordinance (EIAO). Following the approval of the EIA Report, an Environmental Permit (EP) was granted on 13 November 2009, which covers Road P2 and other roads which are classified as primary/district distributor roads **[DP2]** (EP No.: EP-376/2009) for the construction and operation. Further Environmental Permits (FEP No. FEP-03/376/2009) was granted from the Director of Environmental Protection (DEP) on 2 June 2020, which cover the construction works for DP2.
- 2.1.3 The site layout plan of the Project is shown in **Figure 1.1**.

2.2 Site Description

- 2.2.1 The major construction activities under CEDD Entrusted Works of Contract 1123 include:
- a) Site preparation;
 - b) Construct for dual 2-lane primary distributor road, Road P2;
 - c) Construct for other new primary and district distributor roads connecting to the slip roads of the Central-Wan Chai Bypass.

2.3 Construction Programme and Activities

- 2.3.1 As confirmed with the Contractor, the major construction activities under FEP-03/376/2009 have been completed.

2.4 Project Organisation

- 2.4.1 The project organization structure is shown in **Appendix A**. The key personnel contact names and numbers for the Project are summarised in **Table 2.1**.

Table 2.1 Contact Information of Key Personnel

Party	Role	Position	Name	Telephone	Fax
MTR	Residential Engineer (ER)	Chief Construction Manager – SCL Civil	Mr. Jacky Mak	3127 6201	2993 7780
		SCL Project Environmental Team Leader	Mr. Rodney Ip	2688 1760	3761 4610
Meinhardt	Independent Environmental Checker	Independent Environmental Checker	Ms. Claudine Lee	2859 5409	2540 1580
JV	Contractor	Project Director	Mr. Mark Challis	3973 1997	31051126
		Senior Environmental Officer	Ms. Iris Ho	3973 1498	
AECOM	Contractor's Environmental Team (ET)	ET Leader	Mr. Y W Fung	3922 9366	2317 7609

2.5 Status of Environmental Licences, Notification and Permits

- 2.5.1 Relevant environmental licenses, permits and/or notifications on environmental protection for this Project and valid in the reporting period are summarized in **Table 2.2**.

Table 2.2 Status of Environmental Licenses, Notifications and Permits

Permit / License No. / Notification/ Reference No.	Valid Period		Status	Remarks
	From	To		
Environmental Permit				
FEP-03/376/2009	2 Jun 2020	End of Contract	Valid	
Construction Noise Permit				
-	-	-	-	-
Wastewater Discharge License				
WT00040510-2022	10 May 2022	31 May 2027	Valid	For W21 & W22
Chemical Waste Producer Registration				
5213-135-L2881-01	2 Apr 2015	End of Contract	Valid	For whole site at Wan Chai Area
Marine Dumping Permit				
-	-	-	-	-
Billing Account for Construction Waste Disposal				
7021736	16 Feb 2015	End of Contract	Valid	For Disposal of C&D Waste
Notification Under Air Pollution Control (Construction Dust) Regulation				
385128	1 Mar 2015	End of Contract	Valid	For whole site at Wan Chai Area

3 ENVIRONMENTAL MONITORING REQUIREMENT

3.1 Construction Dust Monitoring

Monitoring Requirements

- 3.1.1 In accordance with the approved EM&A Manuals, 24-hour and 1-hour Total Suspended Particulates (TSP) levels at the designated air quality monitoring station is required. Impact 24-hour monitoring should be carried out for at least once every 6 days and 1-hour TSP monitoring should be done at least 3 times every 6 days while the highest dust impact is expected.

Monitoring Locations

- 3.1.2 The monitoring station for construction dust monitoring pertinent to the Project has been identified based on the approved EM&A Manual for SCL (HUH-ADM) of the Project. The location of the construction dust monitoring stations are summarised in **Table 3.1** and shown in **Figure 3.1**.

Table 3.1 Locations of Construction Dust Monitoring Station

Station ID	Dust Monitoring Station
CMA5b ¹	Pedestrian Plaza
CMA6a ¹	WDII PRE Site Office

Remark:

1. According to the updated site layout of CEDD Entrusted Works and Updated EM&A Manual for EP-376/2009, Pedestrian Plaza (CMA5b) and WDII PRE Site Office (CMA6A) were selected as the most affected sensitive receiver during the construction phase.

Monitoring Schedule for the Reporting Period

- 3.1.3 Environmental monitoring for air quality during the construction phase was suspended from 1 November 2023 onwards as agreed with IEC, thus no schedule for environmental monitoring has been made in October to December 2024.

3.2 Construction Noise Monitoring

Monitoring Requirements

- 3.2.1 In accordance with the EM&A Manual, impact noise monitoring should be conducted for at least once a week during the construction phase of the Project. **Table 3.2** summarises the monitoring parameters, frequency and duration of impact noise monitoring.

Table 3.2 Noise Monitoring Parameters, Frequency and Duration

Parameter and Duration	Frequency
30-mins measurement at each monitoring station between 0700 and 1900 on normal weekdays. Leq, L ₁₀ and L ₉₀ would be recorded.	At least once per week

Monitoring Locations

- 3.2.2 The monitoring station for construction noise monitoring pertinent to the Project has been identified based on the approved EM&A Manual for SCL (HUH-ADM) of the Project. Location of the noise monitoring station is summarised in **Table 3.3** and shown in **Figure 3.1**.

Table 3.3 Noise Monitoring Station during the Construction Phase

Identification No.	District	Alternative Noise Monitoring Location
M1a ¹	Wan Chai	Footbridge for Ex-Harbour Road Sports Centre

Remark:

1. According to the updated site layout of CEDD Entrusted Works and Updated EM&A Manual for EP-376/2009, Footbridge for Ex-Harbour Road Sports Centre (M1a) was selected as the most affected sensitive receiver during the construction phase.

Monitoring Schedule for the Reporting Period

- 3.2.3 Environmental monitoring for noise during the construction phase was suspended from 1 November 2023 onwards as agreed with IEC, thus no schedule for environmental monitoring has been made in October to December 2024.

3.3 Landscape and Visual Monitoring

Monitoring Requirements

- 3.3.1 In accordance with the EM&A Manual, the implementation and maintenance of landscape mitigation measures should be checked to ensure that they are fully realized. The task and frequency on Landscape and Visual Monitoring is summarised in **Table 3.4**.

Table 3.4 Landscape and Visual Monitoring Task and Frequency

Phase	Monitoring Task	Frequency
Construction	Monitoring of the contractor's operations during the construction period.	Weekly
Establishment Works	Monitoring of the planting works during the 12-month Establishment period after completion of the construction works.	Quarterly

Monitoring Schedule for the Reporting Period

- 3.3.2 The monitoring for Landscape and Visual during the establishment period was commenced in December 2023 at a frequency of quarterly basis. The first monitoring on the landscape and visual implementation in establishment period was scheduled in February, May, August and the last one was undertaken in November 2024.

4 IMPLEMENTATION STATUS OF ENVIRONMENTAL MITIGATION MEASURES

- 4.1.1 The Contractor has implemented environmental mitigation measures and requirements as stated in the EIA Reports, the EP and the EM&A Manuals. The implementation status of the environmental mitigation measures during the reporting period is summarized in **Appendix B**. Status of required submissions under the EP during the reporting period is summarised in **Table 4.1**.

Table 4.1 Status of Required Submission under Further Environmental Permit

EP Condition	Submission	Submission Date
Condition 3.3 (FEP-03/376/2009)	Quarterly EM&A Report for July to September 2024	11 December 2024

5 MONITORING RESULTS

5.1 Construction Dust Monitoring

- 5.1.1 As confirmed with the Contractor, the major construction activities under FEP-03/376/2009 have been completed, hence the environmental monitoring for air quality during the construction phase was suspended from 1 November 2023 onwards as agreed with IEC.

5.2 Regular Construction Noise Monitoring

- 5.2.1 As confirmed with the Contractor, the major construction activities under FEP-03/376/2009 have been completed, hence the environmental monitoring for noise during the construction phase was suspended from 1 November 2023 onwards as agreed with IEC.

5.3 Waste Management

- 5.3.1 As advised by the Contractor, no C&D materials and wastes sorting were carried out on site in the reporting period, thus no waste flow table has been made in October to December 2024.
- 5.3.2 The Contractor is reminded to properly maintain the site tidiness and dispose of the wastes accumulated on site regularly and properly.

5.4 Landscape and Visual

- 5.4.1 Quarterly inspection of the implementation of landscape and visual mitigation measures for the establishment period was conducted. A summary of the site inspection is provided in **Appendix B**. In the reporting period, the 4th quarterly landscape and visual inspection was carried out on 27 November 2024 with the IEC, the Contractor and the ET. No non-compliance was recorded during the site inspection. Details of observation recorded during the site inspection is presented in **Table 6.1**.

6 ENVIRONMENTAL SITE INSPECTION AND AUDIT

- 6.1.1 As confirmed with the Contractor, the major construction activities under FEP-03/376/2009 have been completed with respect to the joint inspection conducted with IEC on 11 October 2023. The Contractor, ET and IEC share the view that there is no adverse environmental impact of remaining works under FEP-03/376/2009, hence the respective weekly environmental site inspection was suspended from 1 November 2023 onwards as agreed with IEC.
- 6.1.2 Handover progress of the landscape and visual to CEDD was conducted in December 2023 and completed in January 2024, hence the monitoring during the establishment period was commenced in January 2024 at a frequency of quarterly basis. The monitoring on the landscape and visual implementation in establishment period was scheduled in February, May, August and November 2024 tentatively.
- 6.1.3 In the reporting period, the 4th quarterly landscape and visual inspection was carried out on 27 November 2024 with the IEC, the Contractor and the ET. No non-compliance was recorded during the site inspection. Details of observation recorded during the site inspection is presented in **Table 6.1**.

Table 6.1 Observations and Recommendations of Site Audit

Parameters	Date	Observations and Recommendations	Follow-up
Landscape & Visual	27 November 2024	Nil	Nil

7 ENVIRONMENTAL NON-CONFORMANCE

7.1 Summary of Monitoring Exceedances

- 7.1.1 Air quality monitoring was suspended in the reporting period.
- 7.1.2 Noise monitoring was suspended in the reporting period.

7.2 Summary of Environmental Non-Compliance

- 7.2.1 No environmental non-compliance was recorded in the reporting period.

7.3 Summary of Environmental Complaints

- 7.3.1 No environmental related complaint was received in the reporting period. Cumulative statistics on environmental complaints is provided in **Appendix C**.

7.4 Summary of Environmental Summon and Successful Prosecutions

- 7.4.1 No environmental related prosecution or notification of summons was received in the reporting period. Cumulative statistics on notification of summons and successful prosecutions is provided in **Appendix C**.

8 CONCLUSIONS AND RECOMMENDATIONS

8.1 Conclusions

- 8.1.1 No environmental complaint was received in the reporting period.
- 8.1.2 No notification of summons and successful prosecution were received in the reporting period.
- 8.1.3 Referring to the Contractor's information, no notification of summons and successful prosecution was received in the reporting period.
- 8.1.4 The 4th quarterly landscape and visual site inspection was carried out on 27 November 2024.

8.2 Recommendations

- 8.2.1 According to the environmental site inspection for waste management and landscape & visual impact were performed in the reporting period, the following recommendations were provided.

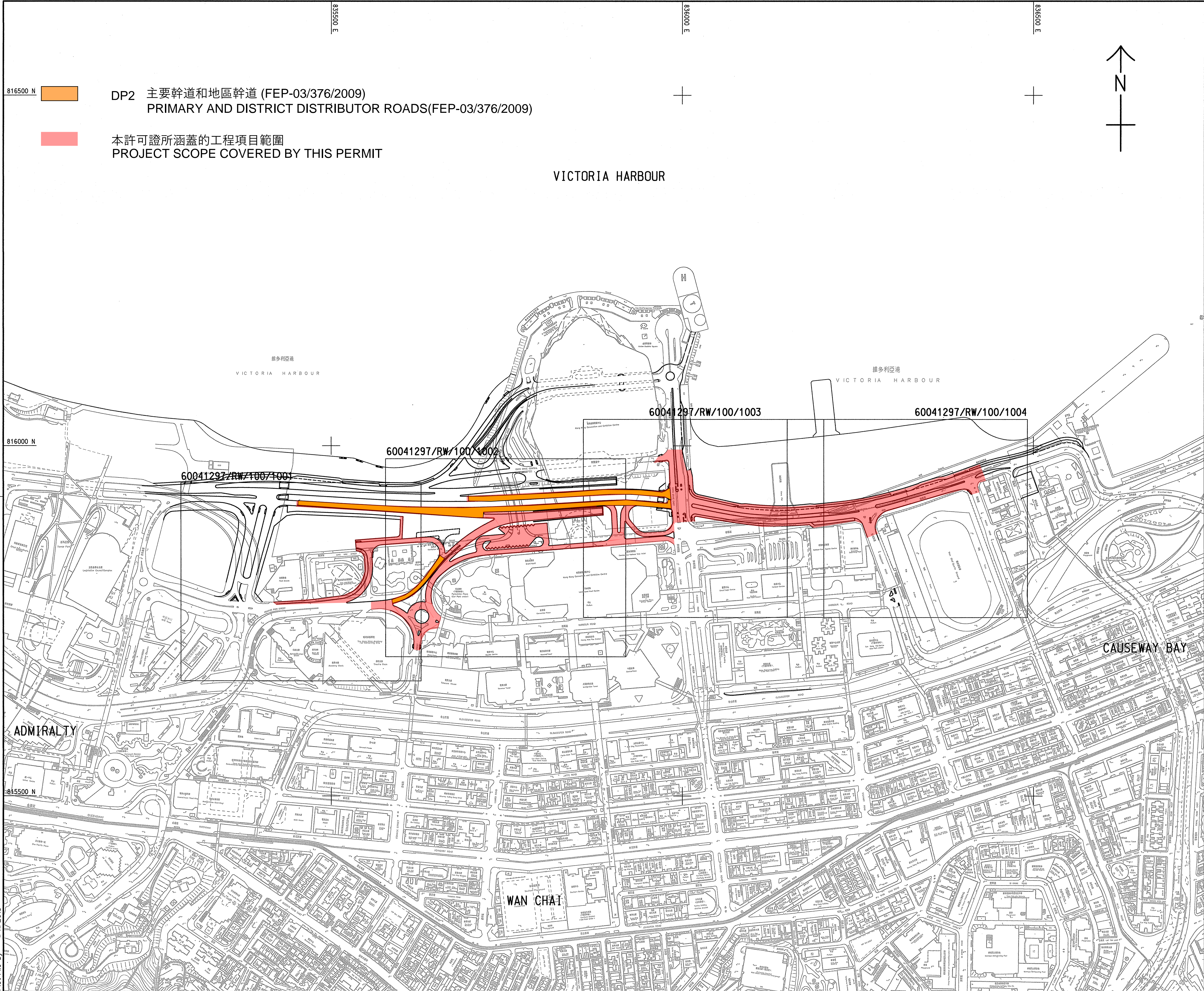
Waste Management

- No specific observation was identified in the reporting period.

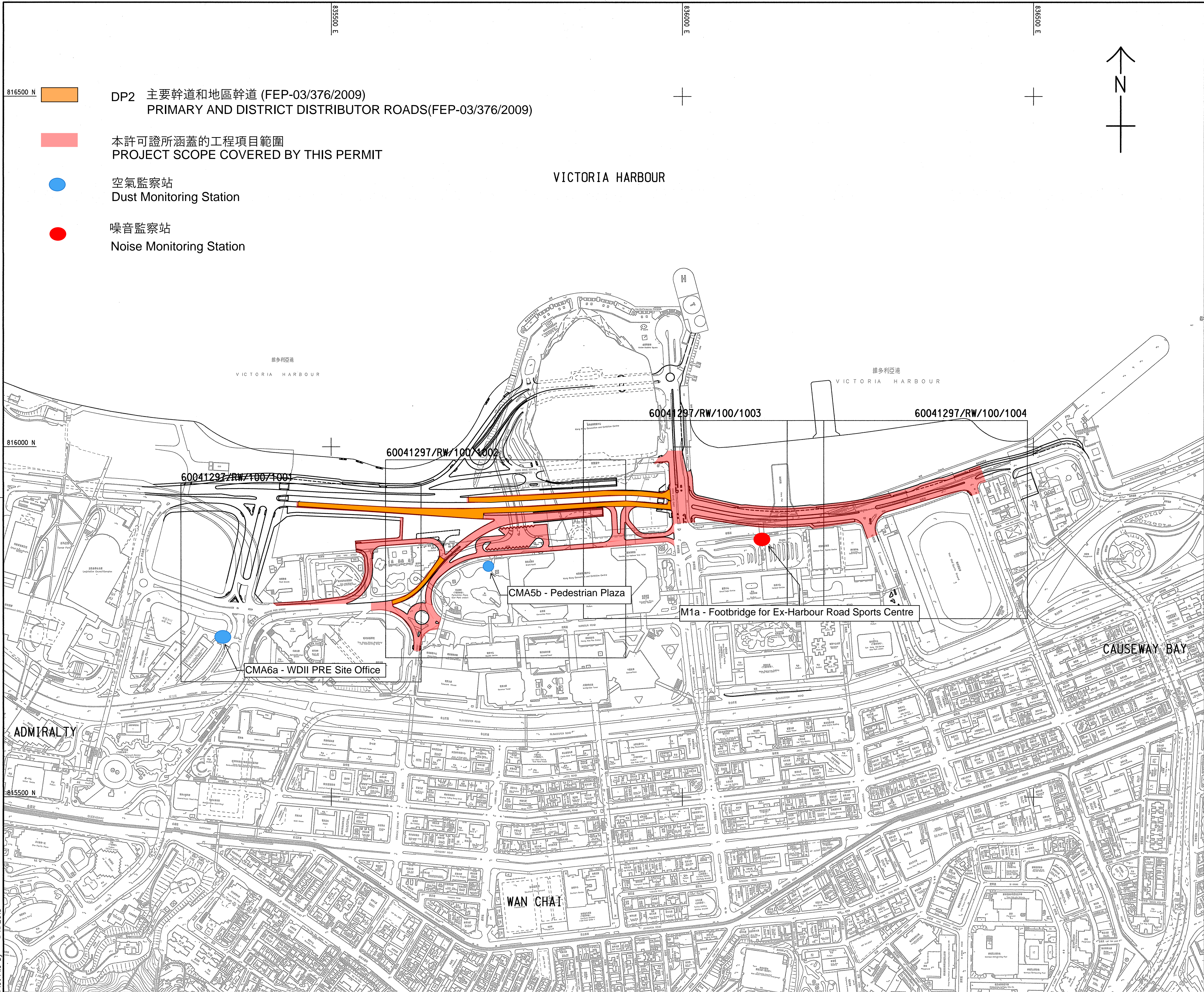
Landscape & Visual Impact



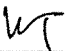
- No specific observation was identified in the reporting period.

FIGURES



-		TENDER DRAWING	PSL		SLYY	OCT 13
REV. 修訂	DESCRIPTION 內容摘要		D.E. 檢閱		P.E. 批准	DATE 日期
			土木工程拓展署 Civil Engineering and Development Department			
CEDD ENTRUSTED WORKS						
Site Layout Plan of CEDD Entrusted Works under Contract 1123						
						
DRG.NO. Figure 1.1 圖紙編號						
DESIGNED BY 設計		CONTRACT NO. 合約編號		P. DIR. APPROVED 批准人		
ST				TKH 		
DRAWN BY 繪圖		STATUS 階段				
TS						
SCALE 比例						
A1 1:2500						
DIMENSIONS ARE IN 尺寸單位		© COPYRIGHT RESERVED 版權所有				
METRES						

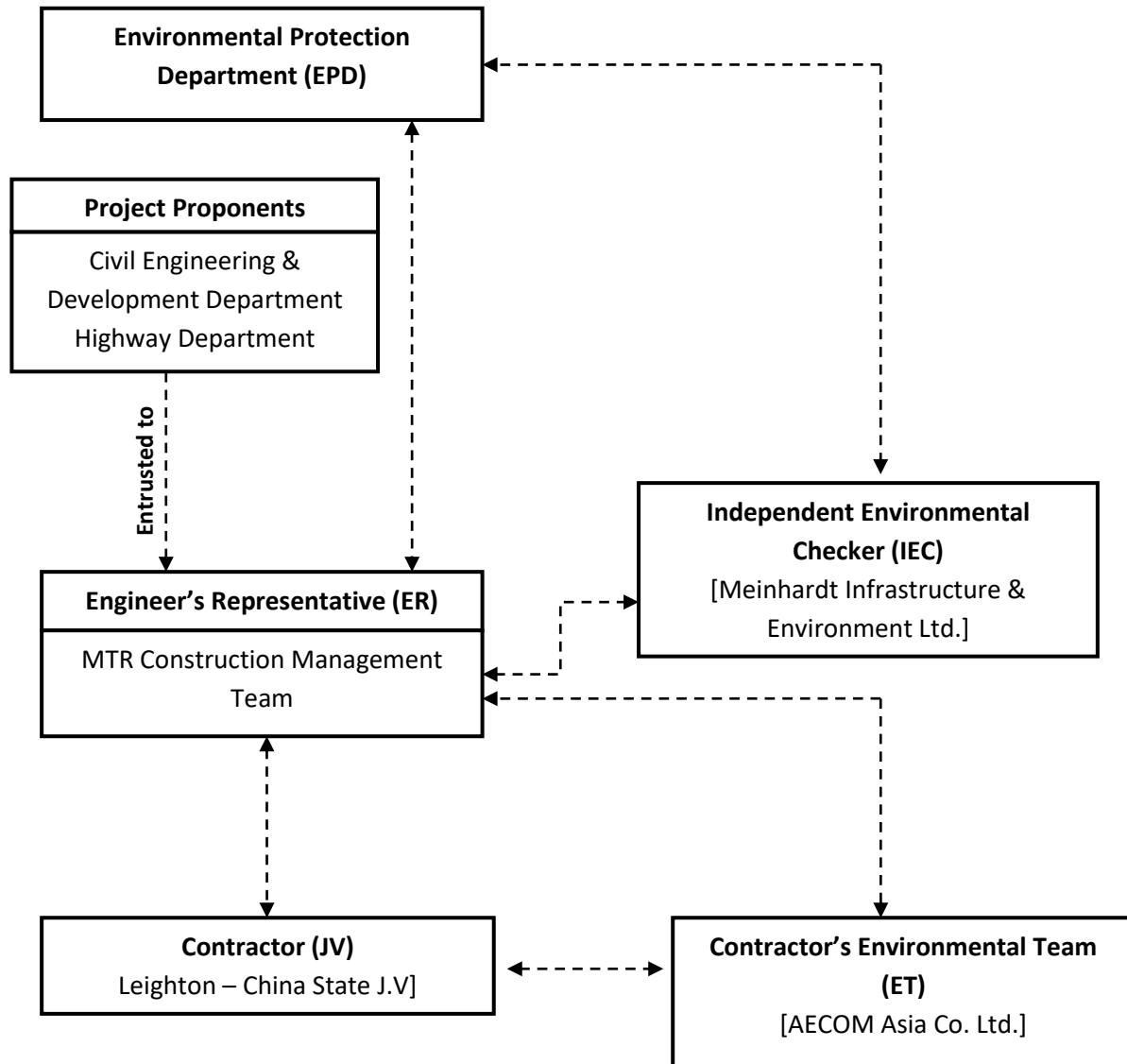


-		TENDER DRAWING		PSL	SLY	OCT 13
REV. 修訂	DESCRIPTION 內容摘要			D.L. CHECKED 查核	DATE 日期	
<div> 土木工程拓展署 Civil Engineering and Development Department</div>						
CEDD ENTRUSTED WORKS						
Air Quality and Noise Monitoring Locations for CEDD Entrusted Works						
						
DRG.NO. Figure 3.1 圖紙編號						
DESIGNED BY 設計		CONTRACT NO. 合約編號		P. DIR. APPROVED 授權人		
DRAWN BY 繪圖		STATUS 狀態		TKH 		
SCALE 比例		DIMENSIONS ARE IN 尺寸單位				
A1 1:2500		METRES				
© COPYRIGHT RESERVED 版權所有						

APPENDIX A

Project Organization Structure

Appendix A Project Organisation Structure



APPENDIX B

Implementation Schedule of Environmental Mitigation Measures

Appendix B – Environmental Mitigation Implementation Schedule

EIA Ref.	Recommended Mitigation Measures	Who to implement the measures?	Location of the measure	When to implement the measures?	Implementation Status
Waste Management Implications					
Construction Phase					
S6.7.7	Good Site Practices: Recommendations for good site practices during the construction activities include: <ul style="list-style-type: none"> Nomination of an approved person, such as a site manager, to be responsible for good site practices, arrangements for collection and effective disposal to an appropriate facility, of all wastes generated at the site; Training of site personnel in proper waste management and chemical waste handling procedures; Provision of sufficient waste disposal points and regular collection for disposal; Appropriate measures to minimise windblown litter and dust during transportation of waste by either covering trucks or by transporting wastes in enclosed containers; Regular cleaning and maintenance programme for drainage systems, sumps and oil interceptors; and A recording system for the amount of wastes generated, recycled and disposed of (including the disposal sites). 	Contractor	Works areas	During planning and design stage, and construction stage	N/A N/A N/A N/A N/A N/A
S6.7.8	Waste Reduction Measures: Recommendations to achieve waste reduction include: <ul style="list-style-type: none"> Encourage collection of aluminium cans, PET bottles and paper by providing separate labelled bins to enable these wastes to be segregated from other general refuse generated by the work force. 	Contractor	Works areas	During planning and design stage, and construction stage	N/A
S6.7.10	General Refuse: <ul style="list-style-type: none"> General refuse shall be stored in enclosed bins or compaction units separate from C&D material. A licensed waste collector shall be employed by the contractor to remove general refuse from the site, separately from C&D material. A collection area shall be provided where wastes can be stored and loaded prior to removal from site. An enclosed and covered area is recommended to reduce the occurrence of 'wind blow' light material. 	Contractor	Works areas	Construction phase	N/A N/A
Landscape and Visual					
Construction Phase					
For DP1 – CWB (Within the Project Boundary) and DP2 - WDII Major Roads (Road P2)					
Table 10.5	CM1 - Topsoil, where identified, shall be stripped and stored for re-use in the construction of the soft landscape works, where practical. CM2 - Existing trees to be retained on site shall be carefully protected during construction. CM3 - Trees unavoidably affected by the works shall be transplanted where practical. CM4 - Compensatory tree planting shall be provided to compensate for felled trees. CM5 - Control of night-time lighting. CM6 - Erection of decorative screen hoarding compatible with the surrounding setting.	Contractor	Works areas	Construction phase	V V V V V V N/A

Legend: V = implemented;
x = not implemented;
@ = partially implemented;
N/A = not applicable

APPENDIX C

Cumulative Statistics of Exceedances, Complaints, Notification of Summons and Successful Prosecutions

Appendix C**Cumulative Statistics on Complaints, Notifications of Summons and Successful Prosecutions**

	Date Received	Subject	Status	Total no. received in this month	Total no. received since project commencement
Environmental complaints	-	-	-	0	0
Notification of summons	-	-	-	0	0
Successful Prosecutions	-	-	-	0	0