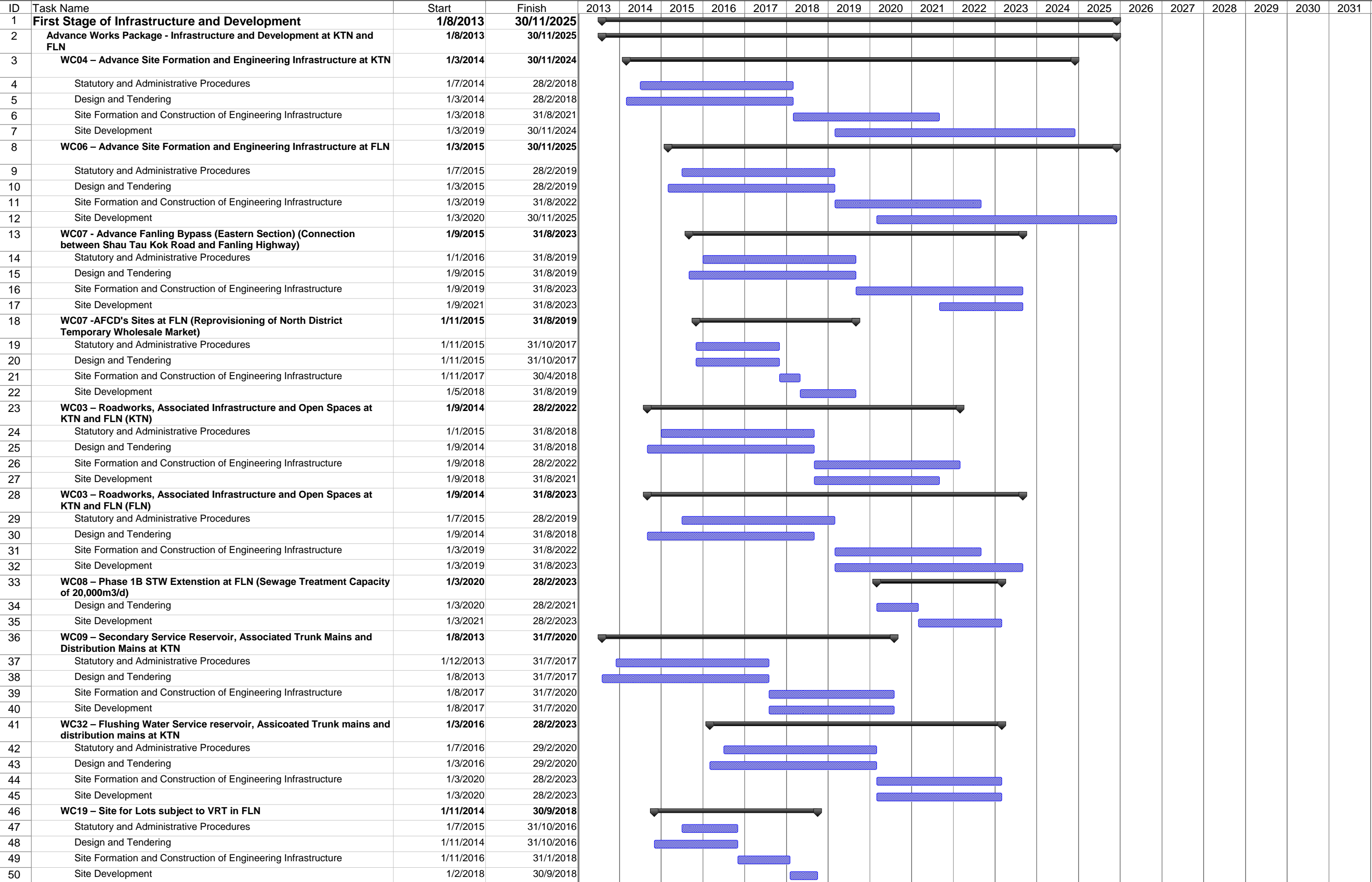
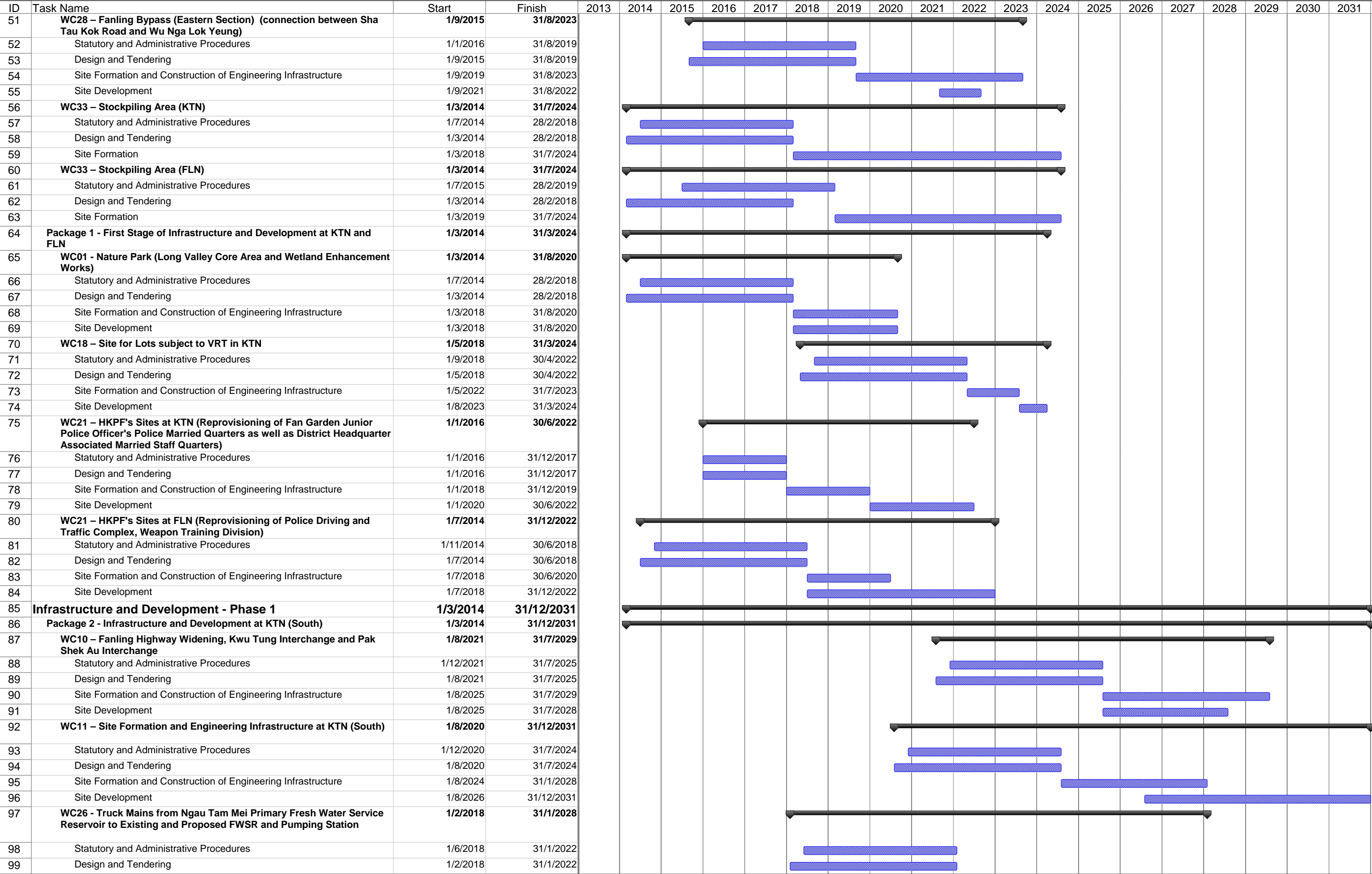


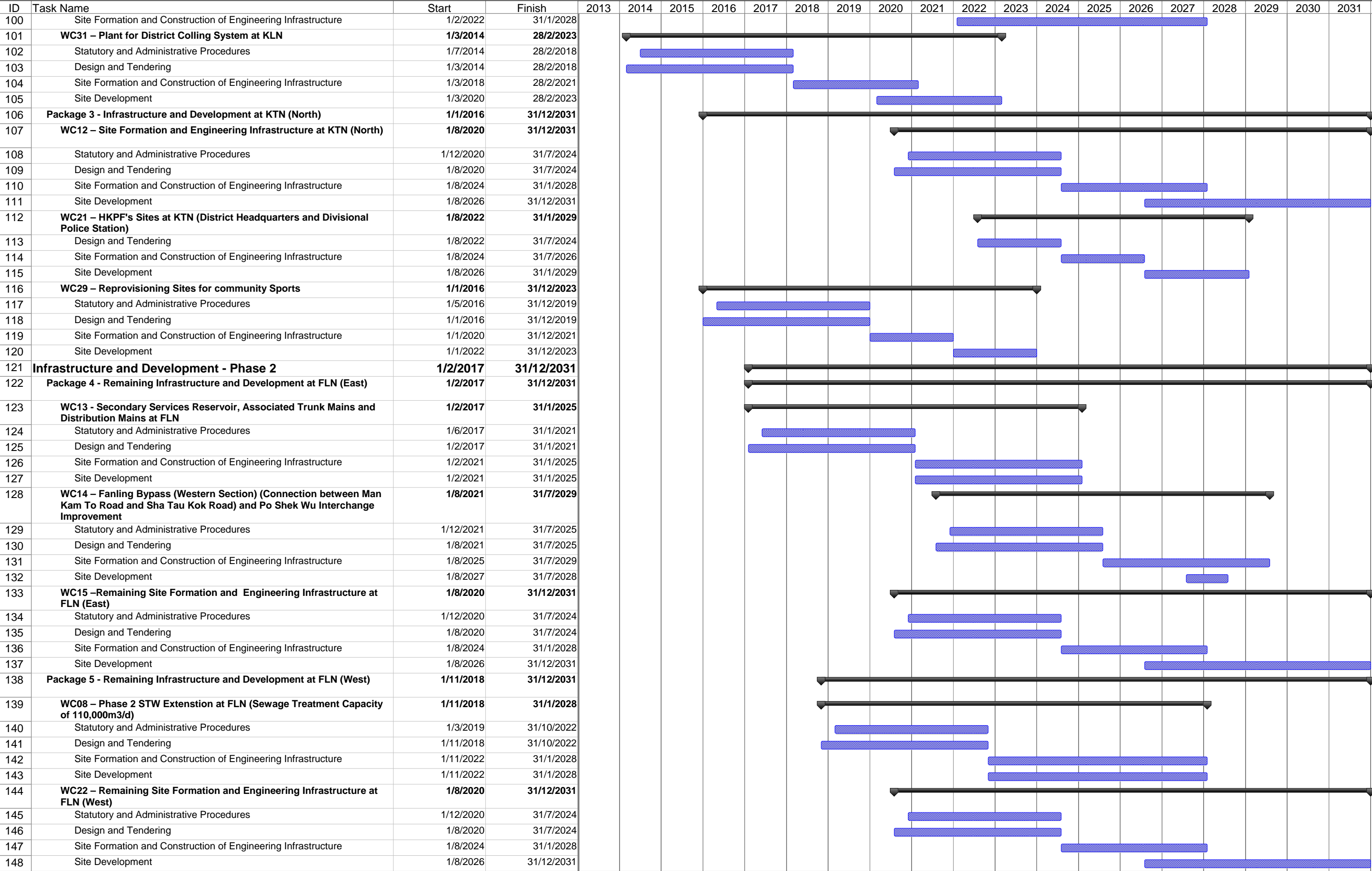
NENT NDAs Study
Implementation Programme and Phasing - Gantt Chart Programme



NENT NDAs Study
Implementation Programme and Phasing - Gantt Chart Programme



NENT NDAs Study
Implementation Programme and Phasing - Gantt Chart Programme



Implementation Programme and Phasing (Based on 06 Nov 2012 version)
Breakdown of Residential and Employment Population Intake in Works Contract Basis
Relationship among Development Phase, Development Packages and Works Contracts with Time Schedule of Works Contracts

Phase	Development Package	Works Contract	Site No.	Land Use	Residential Population	No. of Flat	Completion Year	Duration (month)	Time Schedule for Infrastructure and Development			
									Start	End		
		#WC04 – Advance Site Formation and Engineering Infrastructure at KTN						129	1-Mar-14	30-Nov-24		
			Statutory and Administrative Procedures						44	1-Jul-14	28-Feb-18	
			Design and Tendering						48	1-Mar-14	28-Feb-18	
			Site Formation and Construction of Engineering Infrastructure						42	1-Mar-18	31-Aug-21	
			Site Development						69	1-Mar-19	30-Nov-24	
			KTN A2-2	PRH	15025	5059	2024	57	1-Mar-20	30-Nov-24		
					7513	2529	2023	42	1-Mar-20	31-Aug-23		
					7513	2529	2024	42	1-Jun-21	30-Nov-24		
			KTN A1-10	O	-	-	2021	12	1-Mar-20	28-Feb-21		
			KTN B2-9	O	-	-	2021	12	1-Mar-20	28-Feb-21		
			KTN A2-1	A	-	-	2021	12	1-Mar-20	28-Feb-21		
			KTN A1-2	PRH	7061	2378	2024	57	1-Mar-20	30-Nov-24		
					3531	1189	2023	42	1-Mar-20	31-Aug-23		
					3531	1189	2024	42	1-Jun-21	30-Nov-24		
			KTN A2-3	O	-	-	2021	12	1-Mar-20	28-Feb-21		
			KTN A1-4	R1c	2441	763	2023	36	1-Mar-20	28-Feb-23		
			KTN A1-5	CDA	4075	1509	2023	36	1-Mar-20	28-Feb-23		
			KTN A1-1	A	-	-	2021	12	1-Mar-20	28-Feb-21		
			KTN B2-3	A	-	-	2021	12	1-Mar-20	28-Feb-21		
			KTN B2-4	IC	-	-	2022	42	1-Mar-19	31-Aug-22		
			KTN B2-5	E	-	-	2022	24	1-Mar-20	28-Feb-22		
			KTN B2-6	E	-	-	2022	24	1-Mar-20	28-Feb-22		
			KTN B2-7	E	-	-	2022	24	1-Mar-20	28-Feb-22		
			KTN A1-3	O	-	-	2021	12	1-Mar-20	28-Feb-21		
			KTN E1-6	G	-	-	2022	30	1-Mar-20	31-Aug-22		
			KTN B2-8	G	-	-	2022	24	1-Mar-20	28-Feb-22		
		#WC06 – Advance Site Formation and Engineering Infrastructure at FLN						129	1-Mar-15	30-Nov-25		
				Statutory and Administrative Procedures						44	1-Jul-15	28-Feb-19
				Design and Tendering						48	1-Mar-15	28-Feb-19
				Site Formation and Construction of Engineering Infrastructure						42	1-Mar-19	31-Aug-22
				Site Development						69	1-Mar-20	30-Nov-25
				FLN D2-7	O	-	-	2022	12	1-Mar-21	28-Feb-22	
				FLN D2-8	O	-	-	2022	12	1-Mar-21	28-Feb-22	
				FLN D2-3	O	-	-	2022	12	1-Mar-21	28-Feb-22	
				FLN D2-9	PRH	11993	4038	2025	69	1-Mar-20	30-Nov-25	
						4797	1615	2023	42	1-Mar-20	31-Aug-23	
						7196	2423	2025	57	1-Mar-21	30-Nov-25	
						3598	1211	2024	42	1-Mar-21	31-Aug-24	
						3598	1211	2025	42	1-Jun-22	30-Nov-25	
				FLN D2-11	O	-	-	2022	12	1-Mar-21	28-Feb-22	
				FLN D2-12	R2	4873	1523	2024	36	1-Mar-21	29-Feb-24	
				FLN D2-13	A	-	-	2022	12	1-Mar-21	28-Feb-22	
				FLN D3-5	O	-	-	2022	12	1-Mar-21	28-Feb-22	
				FLN D3-10	O	-	-	2022	12	1-Mar-21	28-Feb-22	
				FLN D3-11	E	-	-	2023	24	1-Mar-21	28-Feb-23	
				FLN D3-12	E	-	-	2023	24	1-Mar-21	28-Feb-23	
				FLN D3-13	A	-	-	2022	12	1-Mar-21	28-Feb-22	
		#WC07 - Advance Fanling Bypass (Eastern Section) (Connection between Shau Tau						96	1-Sep-15	31-Aug-23		
				Statutory and Administrative Procedures						44	1-Jan-16	31-Aug-19
				Design and Tendering						48	1-Sep-15	31-Aug-19
				Site Formation and Construction of Engineering Infrastructure						48	1-Sep-19	31-Aug-23
				Site Development						24	1-Sep-21	31-Aug-23
				FLN D2-10	O	-	-	2022	12	1-Sep-21	31-Aug-22	
				FLN D1-4	O	-	-	2022	12	1-Sep-21	31-Aug-22	
				FLN D1-5	O	-	-	2022	12	1-Sep-21	31-Aug-22	
				FLN D2-14	G	-	-	-	24	1-Sep-21	31-Aug-23	
				FLN D2-15	G	-	-	-	24	1-Sep-21	31-Aug-23	
				FLN D2-16	G	-	-	-	24	1-Sep-21	31-Aug-23	
				FLN D2-17	A	-	-	2022	12	1-Sep-21	31-Aug-22	
		#WC07 -AFCD's Sites at FLN (Reprovisioning of North District Temporary Wholesale						46	1-Nov-15	31-Aug-19		
				Statutory and Administrative Procedures						24	1-Nov-15	31-Oct-17
				Design and Tendering						24	1-Nov-15	31-Oct-17
				Site Formation and Construction of Engineering Infrastructure						6	1-Nov-17	30-Apr-18

Implementation Programme and Phasing (Based on 06 Nov 2012 version)
Breakdown of Residential and Employment Population Intake in Works Contract Basis
Relationship among Development Phase, Development Packages and Works Contracts with Time Schedule of Works Contracts

Phase	Development Package	Works Contract	Site No.	Land Use	Residential Population	No. of Flat	Completion Year	Duration (month)	Time Schedule for Infrastructure and Development		
									Start	End	
Package 1 – First Stage of Infrastructure and Development at KTN and FLN			Site Development					16	1-May-18	31-Aug-19	
			FLN D1-6	G	-	-	2019	16	1-May-18	31-Aug-19	
		WC03 – Roadworks, Associated Infrastructure and Open Spaces at KTN and FLN							90	1-Sep-14	28-Feb-22
			Statutory and Administrative Procedures					44	1-Jan-15	31-Aug-18	
			Design and Tendering					48	1-Sep-14	31-Aug-18	
			Site Formation and Construction of Engineering Infrastructure					42	1-Sep-18	28-Feb-22	
			Site Development					36	1-Sep-18	31-Aug-21	
			KTN C2-6	O	-	-	2021	12	1-Sep-20	31-Aug-21	
			KTN C2-1	O	-	-	2021	12	1-Sep-20	31-Aug-21	
			KTN D1-3	OU(SPS)	-	-	2021	36	1-Sep-18	31-Aug-21	
			KTN D1-1	O	-	-	2021	12	1-Sep-20	31-Aug-21	
			KTN B3-3	O	-	-	2021	12	1-Sep-20	31-Aug-21	
			KTN B3-4	O	-	-	2021	12	1-Sep-20	31-Aug-21	
		WC03 – Roadworks, Associated Infrastructure and Open Spaces at KTN and FLN							108	1-Sep-14	31-Aug-23
			Statutory and Administrative Procedures					44	1-Jul-15	28-Feb-19	
			Design and Tendering					48	1-Sep-14	31-Aug-18	
			Site Formation and Construction of Engineering Infrastructure					42	1-Mar-19	31-Aug-22	
			Site Development					54	1-Mar-19	31-Aug-23	
			FLN A1-5	A	-	-	2022	12	1-Mar-21	28-Feb-22	
			FLN A1-10	A	-	-	2022	12	1-Mar-21	28-Feb-22	
			FLN B1-1	O	-	-	2022	12	1-Mar-21	28-Feb-22	
			FLN B2-3	OU(SPS)	-	-	2022	36	1-Mar-19	28-Feb-22	
			FLN B2-5	IC	-	-	2023	42	1-Mar-20	31-Aug-23	
			FLN C2-3	OU(SPS)	-	-	2022	36	1-Mar-19	28-Feb-22	
		WC08 – Phase 1B STW Extension at FLN (Sewage Treatment Capacity of							36	1-Mar-20	28-Feb-23
			Statutory and Administrative Procedures					-	-	-	
			Design and Tendering					12	1-Mar-20	28-Feb-21	
			Site Formation and Construction of Engineering Infrastructure					-	-	-	
			Site Development					24	1-Mar-21	28-Feb-23	
			FLN A2-3	OU(STW)	-	-	2023	24	1-Mar-21	28-Feb-23	
		WC09 – Secondary Service Reservoir, Associated Trunk Mains and Distribution							84	1-Aug-13	31-Jul-20
			Statutory and Administrative Procedures					44	1-Dec-13	31-Jul-17	
			Design and Tendering					48	1-Aug-13	31-Jul-17	
			Site Formation and Construction of Engineering Infrastructure					36	1-Aug-17	31-Jul-20	
			KTN G1-5	G	-	-	2020	36	1-Aug-17	31-Jul-20	
		WC32 – Flushing Water Service Reservoir, Associated Trunk Mains and Distribution							84	1-Mar-16	28-Feb-23
			Statutory and Administrative Procedures					44	1-Jul-16	29-Feb-20	
			Design and Tendering					48	1-Mar-16	29-Feb-20	
			Site Formation and Construction of Engineering Infrastructure					36	1-Mar-20	28-Feb-23	
			KTN G1-4	G	-	-	2023	36	1-Mar-20	28-Feb-23	
		WC19 – Site for Lots subject to VRT in FLN							47	1-Nov-14	30-Sep-18
			Statutory and Administrative Procedures					16	1-Jul-15	31-Oct-16	
			Design and Tendering					24	1-Nov-14	31-Oct-16	
			Site Formation and Construction of Engineering Infrastructure					15	1-Nov-16	31-Jan-18	
			Site Development					8	1-Feb-18	30-Sep-18	
			FLN B1-8	R4	36	-	2018	8	1-Feb-18	30-Sep-18	
		WC28 -Fanling Bypass (Eastern Section) (connection between Sha Tau Kok Road and							92	1-Sep-15	31-Aug-23
			Statutory and Administrative Procedures					44	1-Jan-16	31-Aug-19	
			Design and Tendering					48	1-Sep-15	31-Aug-19	
			Site Formation and Construction of Engineering Infrastructure					48	1-Sep-19	31-Aug-23	
			Site Development					12	1-Sep-21	31-Aug-22	
			FLN D1-1	A	-	-	2022	12	1-Sep-21	31-Aug-22	
			FLN D1-3	O	-	-	2022	12	1-Sep-21	31-Aug-22	
			FLN D1-2	O	-	-	2022	12	1-Sep-21	31-Aug-22	
		WC33 - Stockpiling Area (KTN)							92	1-Mar-14	31-Jul-24
			Statutory and Administrative Procedures					44	1-Jul-14	28-Feb-18	
			Design and Tendering					48	1-Mar-14	28-Feb-18	
			Site Formation					77	1-Mar-18	31-Jul-24	
		WC33 – Stockpiling Area (FLN)							92	1-Mar-14	31-Jul-24
			Statutory and Administrative Procedures					44	1-Jul-15	28-Feb-19	
			Design and Tendering					48	1-Mar-14	28-Feb-18	
			Site Formation					65	1-Mar-19	31-Jul-24	
Package 1 – First Stage of Infrastructure and Development at KTN and FLN	WC01 -Nature Park (Long Valley Core Area and Wetland Enhancement Works)							74	1-Mar-14	31-Aug-20	
		Statutory and Administrative Procedures					44	1-Jul-14	28-Feb-18		
		Design and Tendering					48	1-Mar-14	28-Feb-18		
		Site Formation and Construction of Engineering Infrastructure					30	1-Mar-18	31-Aug-20		
		Site Development					-	-	-		
		KTN B3-16	OU	-	-	2020	12	1-Sep-19	31-Aug-20		

Implementation Programme and Phasing (Based on 06 Nov 2012 version)
Breakdown of Residential and Employment Population Intake in Works Contract Basis
Relationship among Development Phase, Development Packages and Works Contracts with Time Schedule of Works Contracts

Phase	Development Package	Works Contract	Site No.	Land Use	Residential Population	No. of Flat	Completion Year	Duration (month)	Time Schedule for Infrastructure and Development			
									Start	End		
			KTN C1-9	OU (Nature Park)	-	-	-	30	1-Mar-18	31-Aug-20		
		WC18 – Site for Lots subject to VRT in KTN							71	1-May-18	31-Mar-24	
			Statutory and Administrative Procedures							44	1-Sep-18	30-Apr-22
			Design and Tendering							48	1-May-18	30-Apr-22
			Site Formation and Construction of Engineering Infrastructure							15	1-May-22	31-Jul-23
			Site Development							8	1-Aug-23	31-Mar-24
			KTN D1-5	R4	153	-	2024	8	1-Aug-23	31-Mar-24		
		WC21 – HKPF's Sites at KTN (Reprovisioning of Fan Garden Junior Police Officer's Police Married Quarters as well as District Headquarter Associated Married Staff							78	1-Jan-16	30-Jun-22	
			Statutory and Administrative Procedures							24	1-Jan-16	31-Dec-17
			Design and Tendering							24	1-Jan-16	31-Dec-17
			Site Formation and Construction of Engineering Infrastructure							24	1-Jan-18	31-Dec-19
			Site Development							30	1-Jan-20	30-Jun-22
			KTN E1-3	G	891	330	2022	30	1-Jan-20	30-Jun-22		
		WC21 – HKPF's Sites at FLN (Reprovisioning of Police Driving and Traffic Complex and Weapon Training Division)							102	1-Jul-14	31-Dec-22	
			Statutory and Administrative Procedures							44	1-Nov-14	30-Jun-18
			Design and Tendering							48	1-Jul-14	30-Jun-18
			Site Formation and Construction of Engineering Infrastructure							24	1-Jul-18	30-Jun-20
			Site Development							54	1-Jul-18	31-Dec-22
			FLN A1-6	OU(SPS)	-	-	2021	36	1-Jul-18	30-Jun-21		
			FLN A1-8	G	-	-	2022	30	1-Jul-20	31-Dec-22		
			FLN A1-11	G	-	-	2022	30	1-Jul-20	31-Dec-22		
Infrastructure and Development - Phase 1	Package 2 – Infrastructure and Development at KTN (South)	WC10 – Fanling Highway Widening, Kwu Tung Interchange and Pak Shek Au							96	1-Aug-21	31-Jul-29	
			Statutory and Administrative Procedures							44	1-Dec-21	31-Jul-25
			Design and Tendering							48	1-Aug-21	31-Jul-25
			Site Formation and Construction of Engineering Infrastructure (for roadworks							48	1-Aug-25	31-Jul-29
			Site Development							36	1-Aug-25	31-Jul-28
			KTN B1-8	A	-	-	2028	12	1-Aug-27	31-Jul-28		
			KTN B1-9	A	-	-	2028	12	1-Aug-27	31-Jul-28		
			KTN B1-1	A	-	-	2028	12	1-Aug-27	31-Jul-28		
			KTN B1-4	A	-	-	2028	12	1-Aug-27	31-Jul-28		
			KTN B1-2	A	-	-	2028	12	1-Aug-27	31-Jul-28		
			KTN B1-6	A	-	-	2028	12	1-Aug-27	31-Jul-28		
			KTN B2-11	A	-	-	2028	12	1-Aug-27	31-Jul-28		
			KTN B3-1	O	-	-	2028	12	1-Aug-27	31-Jul-28		
			KTN B3-10	A	-	-	2028	12	1-Aug-27	31-Jul-28		
			KTN B3-11	A	-	-	2028	12	1-Aug-27	31-Jul-28		
			KTN B3-13	A	-	-	2028	12	1-Aug-27	31-Jul-28		
			KTN B3-15	OU(SPS)	-	-	2028	36	1-Aug-25	31-Jul-28		
			KTN C1-2	A	-	-	2028	12	1-Aug-27	31-Jul-28		
		WC11 – Site Formation and Engineering Infrastructure at KTN (South)							137	1-Aug-20	31-Dec-31	
			Statutory and Administrative Procedures							44	1-Dec-20	31-Jul-24
			Design and Tendering							48	1-Aug-20	31-Jul-24
			Site Formation and Construction of Engineering Infrastructure							42	1-Aug-24	31-Jan-28
			Site Development							65	1-Aug-26	31-Dec-31
			KTN B3-7	A	-	-	2027	12	1-Aug-26	31-Jul-27		
			KTN B3-8	OU(C,R&D)	-	-	2029	36	1-Aug-26	31-Jul-29		
			KTN D1-4	O	-	-	2027	12	1-Aug-26	31-Jul-27		
			KTN D1-2	OU(RAF)	-	-	-	-	-	-		
			KTN C1-10	A	-	-	2027	12	1-Aug-26	31-Jul-27		
			KTN C1-11	IC	-	-	2027	12	1-Aug-26	31-Jul-27		
			KTN C1-8	O	-	-	2027	12	1-Aug-26	31-Jul-27		
			KTN C1-7	O	-	-	2027	12	1-Aug-26	31-Jul-27		
			KTN B1-5	OU(RAF)	-	-	-	-	-	-		
			KTN C1-1	O	-	-	2027	12	1-Aug-26	31-Jul-27		
			KTN A1-10	O	-	-	2027	12	1-Aug-26	31-Jul-27		
			KTN A1-11	OU(RAF)	-	-	-	-	-	-		
			KTN A1-12	OU(RAF)	-	-	-	-	-	-		
			KTN A1-6	R1(With Commercial)	4524	1676	2029	36	1-Aug-26	31-Jul-29		
			KTN A1-7	O	-	-	2027	12	1-Aug-26	31-Jul-27		
			KTN A1-8	HOS	4225	1320	2030	42	1-Aug-26	31-Jan-30		

Implementation Programme and Phasing (Based on 06 Nov 2012 version)
Breakdown of Residential and Employment Population Intake in Works Contract Basis
Relationship among Development Phase, Development Packages and Works Contracts with Time Schedule of Works Contracts

Phase	Development Package	Works Contract	Site No.	Land Use	Residential Population	No. of Flat	Completion Year	Duration (month)	Time Schedule for Infrastructure and Development			
									Start	End		
			KTN A1-9	R2	5715	2117	2031	36	1-Jan-29	31-Dec-31		
			KTN B2-2	G	-	-	2029	36	1-Aug-26	31-Jul-29		
			KTN B2-10	CDA	827	306	2029	36	1-Aug-26	31-Jul-29		
			KTN B2-12	OU(C,R&D)	-	-	2029	36	1-Aug-26	31-Jul-29		
			KTN B2-13	A	-	-	2027	12	1-Aug-26	31-Jul-27		
			KTN B3-2	OU(C,R&D)	-	-	2029	36	1-Aug-26	31-Jul-29		
			KTN B3-5	OU(C,R&D)	-	-	2029	36	1-Aug-26	31-Jul-29		
			KTN B3-12	OU(C,R&D)	-	-	2029	36	1-Aug-26	31-Jul-29		
			KTN B3-14	A	-	-	2027	12	1-Aug-26	31-Jul-27		
		KTN B3-9	O	-	-	2027	12	1-Aug-26	31-Jul-27			
		KTN B3-6	A	-	-	2027	12	1-Aug-26	31-Jul-27			
		WC26 - Truck Mains from Ngau Tam Mei Primary Fresh Water Service Reservoir to								120	1-Feb-18	31-Jan-28
			Statutory and Administrative Procedures							44	1-Jun-18	31-Jan-22
			Design and Tendering							48	1-Feb-18	31-Jan-22
			Site Formation and Construction of Engineering Infrastructure							72	1-Feb-22	31-Jan-28
			Site Development							-	-	-
		WC31 – Plant for District Colling System at KLN								108	1-Mar-14	28-Feb-23
			Statutory and Administrative Procedures							44	1-Jul-14	28-Feb-18
			Design and Tendering							48	1-Mar-14	28-Feb-18
			Site Formation and Construction of Engineering Infrastructure							36	1-Mar-18	28-Feb-21
			Site Development							36	1-Mar-20	28-Feb-23
			KTN B1-7	G	-	-	2023	36	1-Mar-20	28-Feb-23		
		WC12 – Site Formation and Engineering Infrastructure at KTN (North)								137	1-Aug-20	31-Dec-31
			Statutory and Administrative Procedures							44	1-Dec-20	31-Jul-24
			Design and Tendering							48	1-Aug-20	31-Jul-24
			Site Formation and Construction of Engineering Infrastructure							42	1-Aug-24	31-Jan-28
			Site Development							65	1-Aug-26	31-Dec-31
			KTN F1-1	G(REC)	-	-	2028	24	1-Aug-26	31-Jul-28		
			KTN F1-2	OU(SPS)	-	-	2029	36	1-Aug-26	31-Jul-29		
			KTN F1-3	IC	-	-	2028	24	1-Aug-26	31-Jul-28		
			KTN F1-6	A	-	-	2027	12	1-Aug-26	31-Jul-27		
			KTN G1-9	A	-	-	2027	12	1-Aug-26	31-Jul-27		
			KTN D1-11	R2	5005	1854	2031	36	1-Jan-29	31-Dec-31		
			KTN D1-10	A	-	-	2027	12	1-Aug-26	31-Jul-27		
			KTN D-1-14	G	-	-	2028	24	1-Aug-26	31-Jul-28		
			KTN D1-15	A	-	-	2027	12	1-Aug-26	31-Jul-27		
			KTN D1-7	R2	7098	2629	2031	36	1-Jan-29	31-Dec-31		
			KTN D1-6	A	-	-	2027	12	1-Aug-26	31-Jul-27		
			KTN E1-2	E	-	-	2028	24	1-Aug-26	31-Jul-28		
			KTN E1-1	O	-	-	-	12	1-Aug-26	31-Jul-27		
			KTN E1-9	OU	-	-	-	12	1-Aug-26	31-Jul-27		
			KTN E1-7	O	-	-	2027	12	1-Aug-26	31-Jul-27		
			KTN A3-1	E	-	-	2028	24	1-Aug-26	31-Jul-28		
			KTN A3-2	E	-	-	2028	24	1-Aug-26	31-Jul-28		
			KTN A3-3	PRH	19176	6456	2031	65	1-Aug-26	31-Dec-31		
					7670	2583	2030	42	1-Aug-26	31-Jan-30		
					5753	1937	2031	42	1-Nov-27	3-May-31		
					5753	1937	2031	42	1-Jul-28	31-Dec-31		
			KTN A3-4	E	-	-	2028	24	1-Aug-26	31-Jul-28		
			KTN A3-5	A	-	-	2027	12	1-Aug-26	31-Jul-27		
			KTN A3-6	R2	3917	1451	2031	36	1-Jan-29	31-Dec-31		
			KTN E1-5	G(REC)	-	-	2028	24	1-Aug-26	31-Jul-28		
			KTN E1-4	E	-	-	2028	24	1-Aug-26	31-Jul-28		
			KTN A2-4	HOS	2887	1069	2030	42	1-Aug-26	31-Jan-30		
			KTN A2-5	R1(With	2203	816	2029	36	1-Aug-26	31-Jul-29		
			KTN A2-6	O	-	-	2027	12	1-Aug-26	31-Jul-27		
			KTN A2-7	PRH	6021	2027	2031	65	1-Aug-26	31-Dec-31		
					3010	1014	2030	42	1-Aug-26	31-Jan-30		

Implementation Programme and Phasing (Based on 06 Nov 2012 version)
Breakdown of Residential and Employment Population Intake in Works Contract Basis
Relationship among Development Phase, Development Packages and Works Contracts with Time Schedule of Works Contracts

Phase	Development Package	Works Contract	Site No.	Land Use	Residential Population	No. of Flat	Completion Year	Duration (month)	Time Schedule for Infrastructure and Development					
									Start	End				
					3010	1014	2031	42	1-Jul-28	31-Dec-31				
			KTN A2-8	O	-	-	2027	12	1-Aug-26	31-Jul-27				
			KTN A2-11	E	-	-	2028	24	1-Aug-26	31-Jul-28				
			KTN A2-12	E	-	-	2028	24	1-Aug-26	31-Jul-28				
			KTN A2-13	E	-	-	2028	24	1-Aug-26	31-Jul-28				
			KTN A2-14	O	-	-	2027	12	1-Aug-26	31-Jul-27				
			KTN A2-9	R2	5150	1908	2031	36	1-Jan-29	31-Dec-31				
		KTN A2-10	A	-	-	2027	12	1-Aug-26	31-Jul-27					
		WC21 – HKPF's Sites at KTN (District Headquarters and Divisional Police Station)							78	1-Aug-22	31-Jan-29			
			Statutory and Administrative Procedures							-	-	-		
			Design and Tendering							24	1-Aug-22	31-Jul-24		
			Site Formation and Construction of Engineering Infrastructure							24	1-Aug-24	31-Jul-26		
			Site Development							30	1-Aug-26	31-Jan-29		
			KTN E1-3	G	-	-	2029	30	1-Aug-26	31-Jan-29				
		WC29 – Reprovisioning Sites for Potential Activity Centre							96	1-Jan-16	31-Dec-23			
			Statutory and Administrative Procedures							44	1-May-16	31-Dec-19		
			Design and Tendering							48	1-Jan-16	31-Dec-19		
			Site Formation and Construction of Engineering Infrastructure							24	1-Jan-20	31-Dec-21		
			Site Development							24	1-Jan-22	31-Dec-23		
			KTND1-12	G(REC)	-	-	2023	24	1-Jan-22	31-Dec-23				
			KTN D1-13	G(REC)	-	-	2023	24	1-Jan-22	31-Dec-23				
		Infrastructure and Development - Phase 2	Package 4 – Remaining Infrastructure and Development at FLN (East)	WC13 - Secondary Services Reservoir, Associated Trunk Mains and Distribution							96	1-Feb-17	31-Jan-25	
					Statutory and Administrative Procedures							44	1-Jun-17	31-Jan-21
					Design and Tendering							48	1-Feb-17	31-Jan-21
					Site Formation and Construction of Engineering Infrastructure							48	1-Feb-21	31-Jan-25
					Site Development							48	1-Feb-21	31-Jan-25
FLN A3-1	G				-	-	2025	48	1-Feb-21	31-Jan-25				
FLN D4-1	G				-	-	2025	48	1-Feb-21	31-Jan-25				
WC14 – Fanling Bypass (Western Section) (Connection between Man Kam To Road and Sha Tau Kok Road) and Po Shek Wu Interchange Improvement							96	1-Aug-21	31-Jul-29					
	Statutory and Administrative Procedures							44	1-Dec-21	31-Jul-25				
	Design and Tendering							48	1-Aug-21	31-Jul-25				
	Site Formation and Construction of Engineering Infrastructure (for roadworks)							48	1-Aug-25	31-Jul-29				
	Site Development							12	1-Aug-27	31-Jul-28				
	FLN B1-2			O	-	-	2028	12	1-Aug-27	31-Jul-28				
	FLN B1-5			O	-	-	2028	12	1-Aug-27	31-Jul-28				
	FLN B1-6			A	-	-	2028	12	1-Aug-27	31-Jul-28				
	FLN C1-3			O	-	-	2028	12	1-Aug-27	31-Jul-28				
	FLN C1-2			A	-	-	2028	12	1-Aug-27	31-Jul-28				
	FLN C1-1			A	-	-	2028	12	1-Aug-27	31-Jul-28				
	FLN B1-4			O	-	-	2028	12	1-Aug-27	31-Jul-28				
	FLN B1-10			O	-	-	2028	12	1-Aug-27	31-Jul-28				
WC15 – Remaining Site Formation and Engineering Infrastructure at FLN (East)							137	1-Aug-20	31-Dec-31					
	Statutory and Administrative Procedures							44	1-Dec-20	31-Jul-24				
	Design and Tendering							48	1-Aug-20	31-Jul-24				
	Site Formation and Construction of Engineering Infrastructure							42	1-Aug-24	31-Jan-28				
	Site Development							65	1-Aug-26	31-Dec-31				
	FLN C2-4			O	-	-	2027	12	1-Aug-26	31-Jul-27				
	FLN C2-5			G	-	-	2028	24	1-Aug-26	31-Jul-28				
	FLN C2-6			G	-	-	2029	36	1-Aug-26	31-Jul-29				
	FLN C2-7			E	-	-	2028	24	1-Aug-26	31-Jul-28				
	FLN C2-8			O	-	-	2027	12	1-Aug-26	31-Jul-27				
	FLN C2-9			E	-	-	2028	24	1-Aug-26	31-Jul-28				
	FLN C2-10			O	-	-	2027	12	1-Aug-26	31-Jul-27				
	FLN D2-1			O	-	-	2027	12	1-Aug-26	31-Jul-27				
	FLN D2-2			HOS	2422	897	2031	42	1-Jul-28	31-Dec-31				
	FLN D2-4			R2	2996	1110	2031	36	1-Jan-29	31-Dec-31				
	FLN D2-5			O	-	-	2027	12	1-Aug-26	31-Jul-27				
	FLN D2-6			PRH	2839	956	2030	42	1-Aug-26	31-Jan-30				
	FLN D3-1a	R1			2029	36	1-Aug-26	31-Jul-29						
	FLN D3-1b	HOS			2030	42	1-Aug-26	31-Jan-30						
	FLN D3-1c	R1c			2029	36	1-Aug-26	31-Jul-29						
	FLN D3-2	A	-	-	2027	12	1-Aug-26	31-Jul-27						
	FLN D3-3	R1(With Commercial)	1786	662	2031	36	1-Jan-29	31-Dec-31						
	FLN D3-4	R1(With Commercial)	2407	891	2031	36	1-Jan-29	31-Dec-31						
	FLN D3-5	O	-	-	2027	12	1-Aug-26	31-Jul-27						

Implementation Programme and Phasing (Based on 06 Nov 2012 version)
Breakdown of Residential and Employment Population Intake in Works Contract Basis
Relationship among Development Phase, Development Packages and Works Contracts with Time Schedule of Works Contracts

Phase	Development Package	Works Contract	Site No.	Land Use	Residential Population	No. of Flat	Completion Year	Duration (month)	Time Schedule for Infrastructure and Development			
									Start	End		
			FLN D3-6	R1(With Commercial)	2382	882	2029	36	1-Aug-26	31-Jul-29		
			FLN D3-7	R1(With Commercial)	2236	828	2029	36	1-Aug-26	31-Jul-29		
			FLN D3-8	PRH	4028	1356	2030	42	1-Aug-26	31-Jan-30		
			FLN D3-9	A	-	-	2027	12	1-Aug-26	31-Jul-27		
	Package 5 – Remaining Infrastructure and Development at FLN (West)	WC22 – Remaining Site Formation and Engineering Infrastructure at FLN (West)							137	1-Aug-20	31-Dec-31	
			Statutory and Administrative Procedures						44	1-Dec-20	31-Jul-24	
			Design and Tendering						48	1-Aug-20	31-Jul-24	
			Site Formation and Construction of Engineering Infrastructure						42	1-Aug-24	31-Jan-28	
			Site Development						65	1-Aug-26	31-Dec-31	
			FLN A1-2	G	-	-	-	-	-	-		
			FLN A1-4	O	-	-	2027	12	1-Aug-26	31-Jul-27		
			FLN A2-1	A	-	-	2027	12	1-Aug-26	31-Jul-27		
			FLN A2-2	A	-	-	2027	12	1-Aug-26	31-Jul-27		
			FLN A2-4	A	-	-	2027	12	1-Aug-26	31-Jul-27		
			FLN A1-7	CA	-	-	2027	12	1-Aug-26	31-Jul-27		
			FLN B2-1	O	-	-	2027	12	1-Aug-26	31-Jul-27		
			FLN B2-4	G	-	-	2028	24	1-Aug-26	31-Jul-28		
			FLN B2-2	OU(PTD)	-	-	-	12	1-Aug-26	31-Jul-27		
			FLN B2-6	PRH	4326	1456	2030	42	1-Aug-26	31-Jan-30		
			FLN B2-7	PRH	3422	1152	2031	65	1-Aug-26	31-Dec-31		
					1711	576	2030	42	1-Aug-26	31-Jan-30		
					1711	576	2031	42	1-Jul-28	31-Dec-31		
			FLN B2-8	O	-	-	2027	12	1-Aug-26	31-Jul-27		
			FLN B2-9	O	-	-	2026		1-Aug-26	31-Jul-26		
			FLN B2-10	O	-	-	2027	12	1-Aug-26	31-Jul-27		
			FLN B2-11	PRH	4294	1446	2031	42	1-Nov-27	30-Apr-31		
			FLN B2-12	PRH	3237	1090	2031	65	1-Aug-26	31-Dec-31		
					1618	545	2030	42	1-Aug-26	31-Jan-30		
					1618	545	2031	42	1-Jul-28	31-Dec-31		
			FLN B1-7	R2	2079	770	2031	36	1-Jan-29	31-Dec-31		
			FLN B1-9	R3	435	161	2031	36	1-Jan-29	31-Dec-31		
			FLN B3-1	O	-	-	2027	12	1-Aug-26	31-Jul-27		
			FLN B3-7	R2	1171	434	2031	36	1-Jan-29	31-Dec-31		
			FLN B3-2	PRH	1939	653	2031	42	1-Jul-28	31-Dec-31		
			FLN B3-3	PRH	2592	873	2031	65	1-Aug-26	31-Dec-31		
					1296	436	2030	42	1-Aug-26	31-Jan-30		
					1296	436	2031	42	1-Jul-28	31-Dec-31		
			FLN B3-4	E	-	-	2028	24	1-Aug-26	31-Jul-28		
			FLN B3-5	E	-	-	2028	24	1-Aug-26	31-Jul-28		
			FLN B3-6	R2(Commerci	829	307	2031	36	1-Jan-29	31-Dec-31		
			FLN B3-8	O	-	-	2027	12	1-Aug-26	31-Jul-27		
			FLN B3-9	R2	1183	438	2031	36	1-Jan-29	31-Dec-31		
			FLN B3-10	E	-	-	2028	24	1-Aug-26	31-Jul-28		
			FLN B3-11	O	-	-	2027	12	1-Aug-26	31-Jul-27		
			FLN B3-12	E	-	-	2028	24	1-Aug-26	31-Jul-28		
			FLN C2-2	O	-	-	2027	12	1-Aug-26	31-Jul-27		
			FLN C2-1	O	-	-	2027	12	1-Aug-26	31-Jul-27		
		WC08 – Phase 2 STW Extension at FLN (Sewage Treatment Capacity of								111	1-Nov-18	31-Jan-28
				Statutory and Administrative Procedures						44	1-Mar-19	31-Oct-22
				Design and Tendering						48	1-Nov-18	31-Oct-22
				Site Formation and Construction of Engineering Infrastructure						63	1-Nov-22	31-Jan-28
	Site Development						63	1-Nov-22	31-Jan-28			
	FLN A2-3			OU(STW)	-	-	2028	63	1-Nov-22	31-Jan-28		