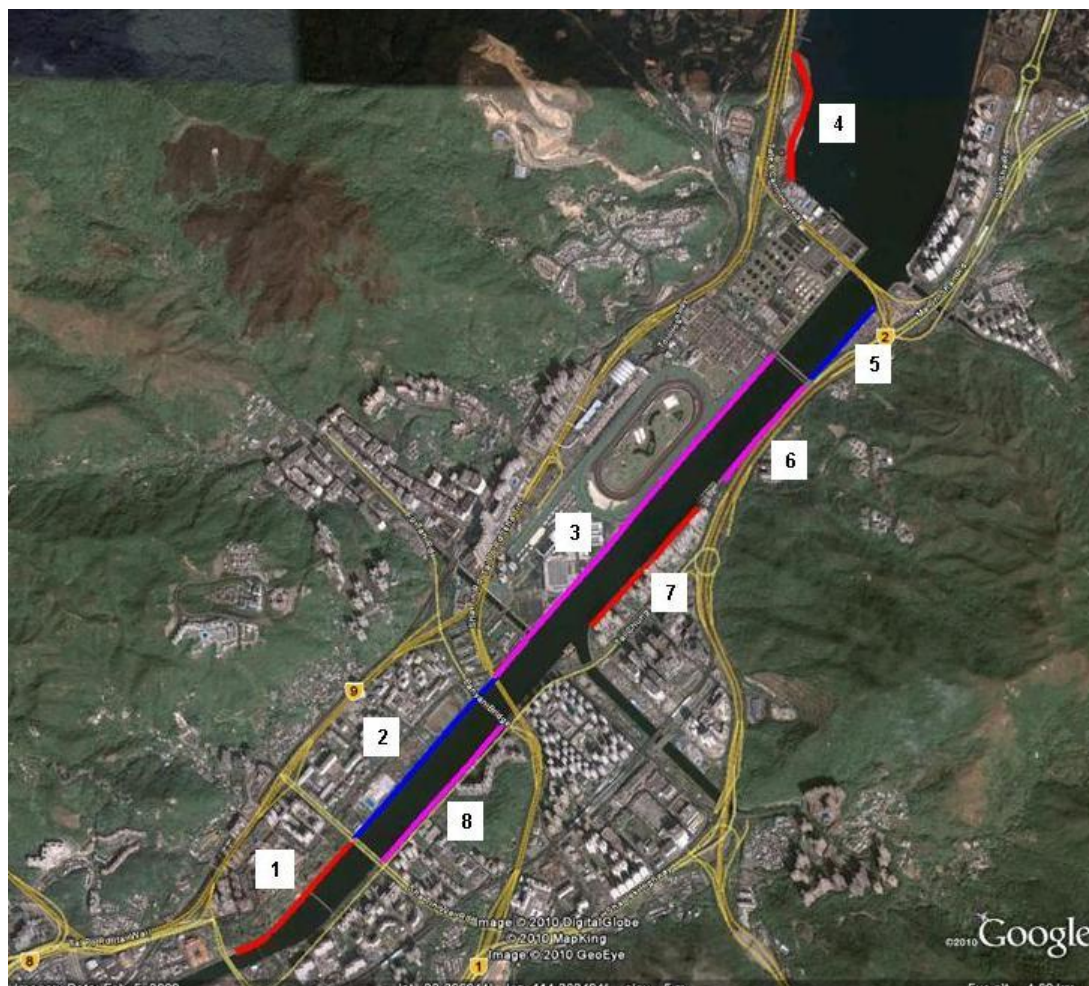


## Appendix 9.2 Site Survey on Riverside/Seafront Promenade Areas at Sha Tin

### Locations



### Observations from the survey

Section	Type	Length, km	Working day population	Weekend day population	Working day population density, ppl/km	Weekend day population density, ppl/km
1	Urban	0.78	46	146	59	187
2	Urban	1.00	39	106	39	106
3	Suburb (Popular)	2.10	20	145	10	69
4	Suburb (Popular)	0.65	12	66	18	102
5	Suburb	0.49	5	19	10	39
6	Suburb	0.61	8	12	13	20
7	Suburb (Popular)	0.79	19	36	24	46
8	Urban	0.88	52	84	59	95
Summary						
	Urban	2.66	137	336	52 (41%) <sup>(1)</sup>	126 <sup>(2)</sup>
	Suburb (Popular)	3.54	51	247	14 (21%)	70
	Suburb	1.10	13	31	12 (42%)	28

Note:

(1) Average population density on working days:  $52 = 137/2.66$ , and population ratio of working days to weekend days:  $41\% = 52/126$ .

(2) Average population density on weekend days:  $126 = 336/2.66$ .

### Population densities (riverside promenade area) assumed in the assessment

Type	Weekend day population density, ppl/km	Working day population ratio	Peak hours (traffic) population ratio	Night-time population ratio
Urban	130	40%	40%	4%
Suburb (Popular)	70	20%	20%	2%
Suburb	30	40%	40%	4%