



KLR1.1 - Ng Tung River (channelized)



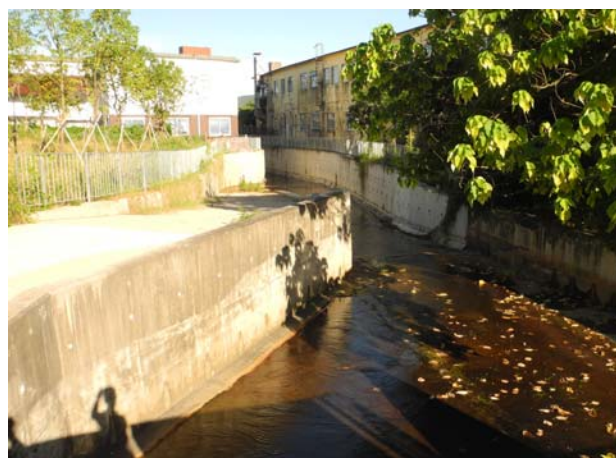
KLR1.2 - Shek Sheung River (channelized)



KLR1.3 - Sheung Yue River (channelized)



KLR1.4 – Watercourse Network in Long Valley



KLR2.1 - Streams in Kwu Tung



KLR2.2 - Natural Streams at Tai Shek Mo