

MTR Corporation Limited

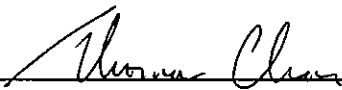
South Island Line (East)

Landscape and Visual Plan

Part 2: Chung Hom Shan Magazine site

September 2014


Verified by:



Thomas Chan

Independent Environmental Checker

Date:



MTR Corporation Limited

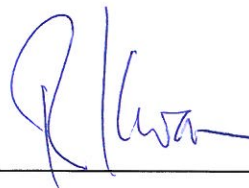
South Island Line (East)

Landscape and Visual Plan

Part 2: Chung Hom Shan Magazine site

September 2014

Certified by:



Richard Kwan

Environmental Team Leader

Date:

11 SEP 2014

1. INTRODUCTION

The purpose of the Landscape and Visual Plan as required under the condition 2.32 of the Environmental Permit (EP No. EP-407/2010/E) of the South Island Line (East) (hereinafter called 'Project') is to reduce the landscape and visual impact due to the Project, in particular the reinstated Harcourt Garden, the new structures of ventilation shafts and electrical and mechanical plant buildings and the viaduct section along reinstated Wong Chuk Hang Nullah. This is the second batch of the submission which covers the Chung Hom Shan Magazine site.

The landscape and visual mitigation measures of the Project will be commenced by phases. The Landscape and Visual Plan for other areas of the Project shall be submitted by stages at least one month before commencement of the respective landscape and visual treatment works.

2. LANDSCAPE AND VISUAL PLAN FOR SOH STATION PLANTBUILDING

2.1 Design Details

In accordance with EIA recommendation, the following landscape and visual mitigation measures shall be implemented within the captioned site area (as shown on attached drawing no. 902/K/321/SWL/C04/230 Rev. B):

- I. Preservation of existing vegetation (CP1);
- II. Compensating planting (OP3); and
- III. Treatment of retaining wall and slope (OP4)

Further to the Tree Removal Application submitted to Lands Department after EIA approval, 44 no. of compensatory trees and hydroseeding will be planted within the site.

2.2 Locations

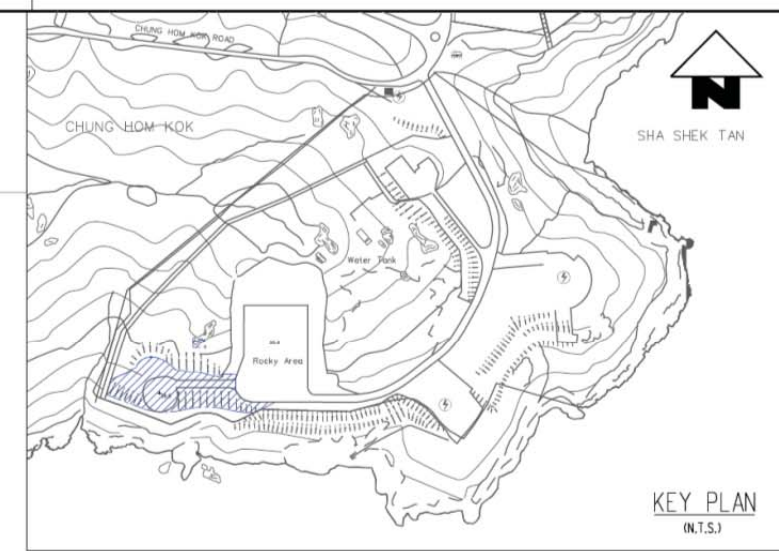
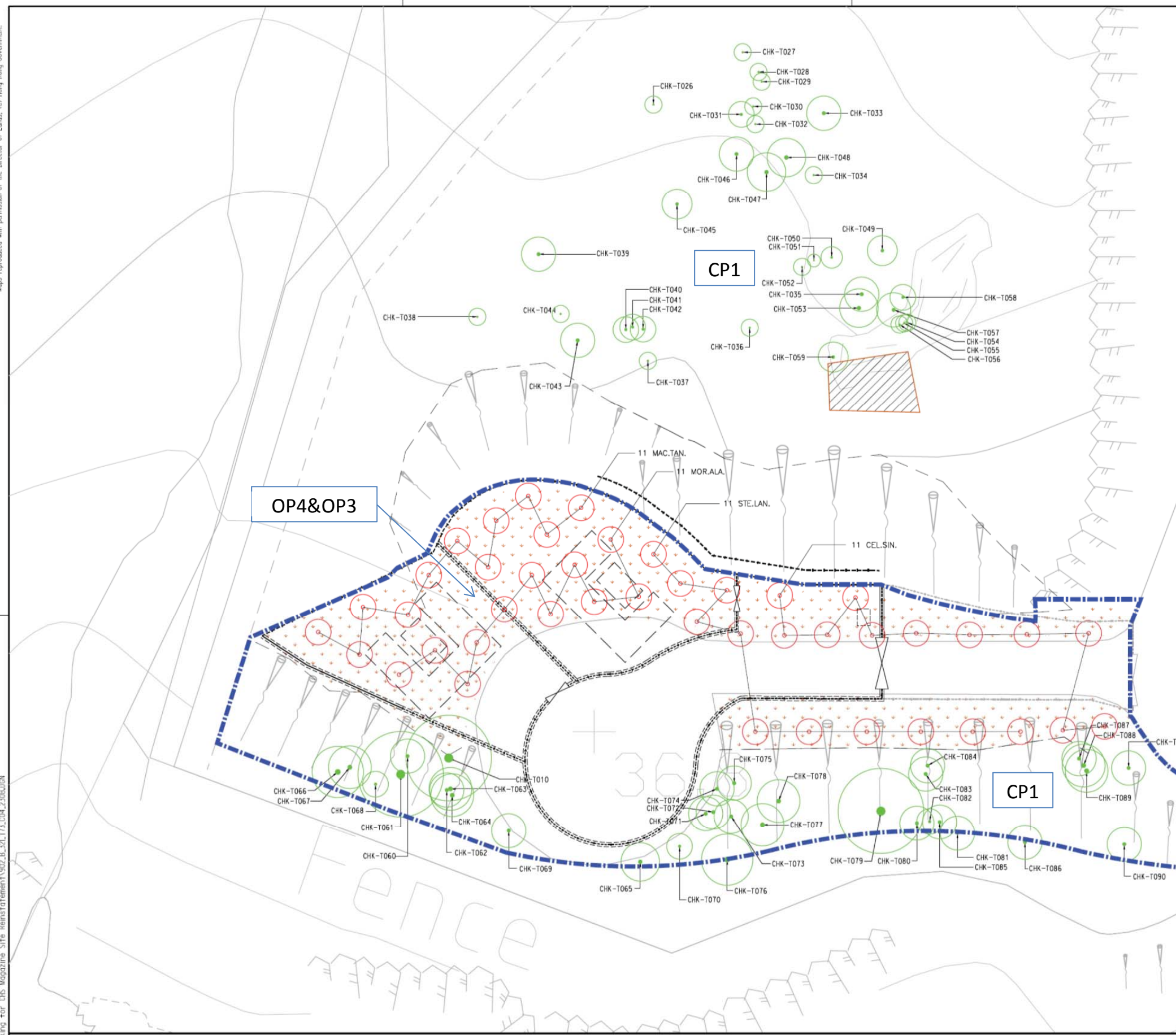
Please refer to the attached drawing as mentioned in above S2.1.

2.3 Implementation Programme

Based on the updated programme, all the landscape mitigation measures listed in S2.1 shall be carried out and completed in November 2014.

2.4 Maintenance and Management Schedules

MTR Corporation is responsible for the maintenance of the landscape mitigation measures for one year after completion. The landscape mitigation measures will be completed by MTR and referred back to Lands Department after the warranty period in 2015.



PLANTING SCHEDULE

Code	Botanical Name	Chinese Name	Standard	Spacing	Remarks	Quantity
TREE 樹類						
CEL.SIN.	Celtis sinensis	朴樹	STD.	5m	80mm trunk dia.	11
MOR.ALA.	Morus alba	桑樹	STD.	5m	80mm trunk dia.	11
MAC.TAN.	Macaranga tanarius	血桐	STD.	5m	80mm trunk dia.	11
STE.LAN.	Sterculic lanceolato	假蘋婆	STD.	5m	80mm trunk dia.	11

Landscape Mitigation Measures
 CP1 Preservation of Existing Vegetation
 OP3 Compensatory Planting Proposals
 OP4 Treatment of Retaining Wall and Slopes

LEGEND :-

	HYDROSEEDING		RETAINED TREE		PROPOSED TREE		PROPOSED CONCRETE BUTTRISS		WORKS AREA BOUNDARY AT GROUND LEVEL
--	--------------	--	---------------	--	---------------	--	----------------------------	--	-------------------------------------

- NOTES :-**
- ALL COORDINATES ARE REFERENCE TO HONG KONG METRIC GRID (1980).
 - ALL LEVELS ARE IN METRES ABOVE HONG KONG PRINCIPAL DATUM (mPD).
 - ALL DIMENSIONS IN MILLIMETRES UNLESS INDICATED OTHERWISE.
 - SCHEDULE OF DETAILED TREE SURVEY INFORMATION, REFER TO EXISTING TREE ASSESSMENT SCHEDULE.
 - PHOTO RECORD OF INDIVIDUAL TREE, REFER TO TREE PHOTO RECORD.
 - TREE'S CANOPY MARKED ON PLAN IS PROPORTIONAL TO THE ACTUAL SIZE.

DRAWN: CL DESIGNED: MF CHECKED: SF APPROVED: WC				DATE: 08/01/2010			SOUTH ISLAND LINE (EAST)	ORIGINATOR: URS URS Hong Kong Ltd	TITLE: CONTRACT 902 CHUNG HOM SHAN MAGAZINE SITE COMPENSATORY PLANTING PLAN		
B AMENDMENT ON COMPENSATORY PLANTING LAYOUT MF JUL 14 WC A1 REVISION AS PER AFC'D'S COMMENT MF SEPT 10 WC A FIRST ISSUE MF 08.JAN.10 WC				DO NOT SCALE DRAWINGS. ALL DIMENSIONS SHALL BE VERIFIED ON SITE. © MTR CORPORATION LIMITED 2008. COPYRIGHT IN RESPECT OF THIS DRAWING / DOCUMENT IS OWNED BY THE MTR CORPORATION LIMITED OF HONG KONG. NO REPRODUCTION OF THE DRAWING / DOCUMENT OR ANY PART BY WHATEVER MEANS IS PERMITTED WITHOUT THE PRIOR WRITTEN CONSENT OF THE MTR CORPORATION LIMITED.					SCALE: 1 : 250		DRAWING NO.: 902/B/321/T73/C04/230