

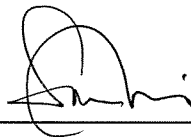
MTR Corporation Limited

South Island Line (East)

Operational air-borne noise mitigation
measures as-built drawings

July 2016

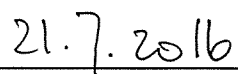
Verified by:



Sam Tsoi

Independent Environmental Checker

Date:



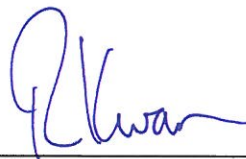
MTR Corporation Limited

South Island Line (East)

Operational air-borne noise mitigation
measures as-built drawings

July 2016

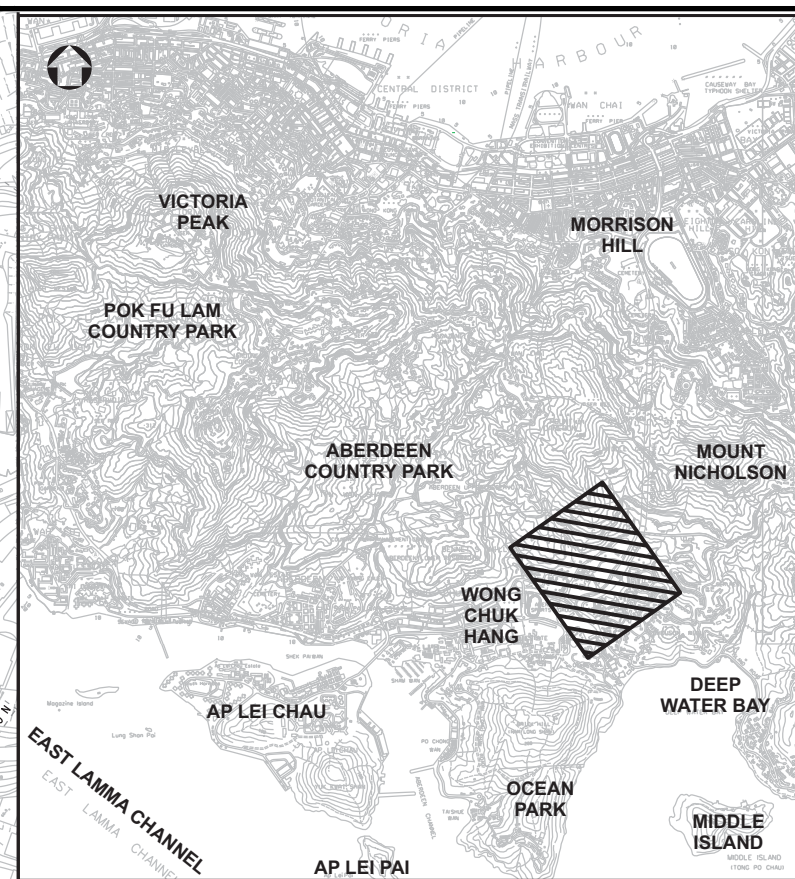
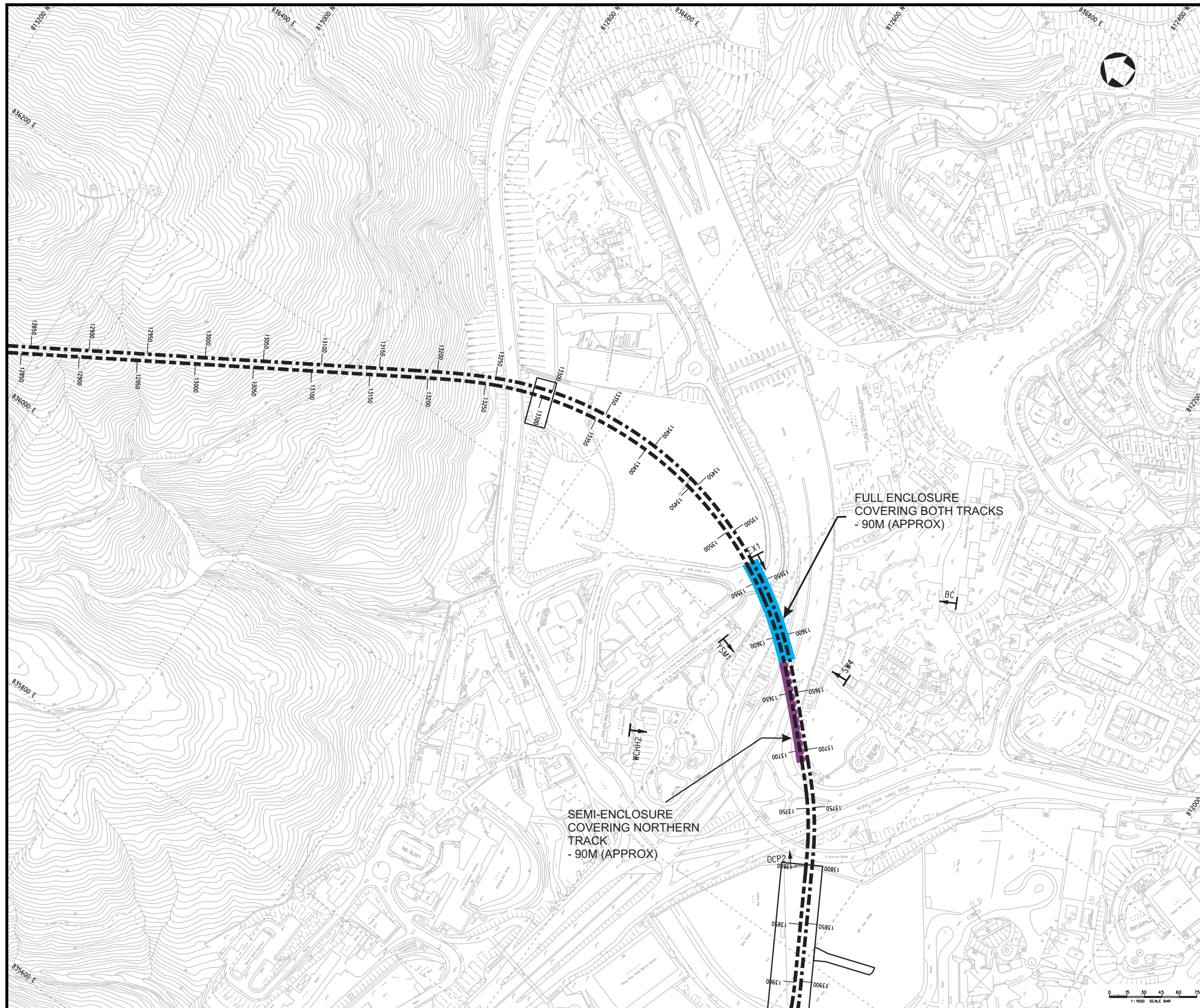
Certified by:



Richard Kwan

Environmental Team Leader

Date: 21 July, 2016



Key Plan

Legend

- SOH2 Noise Sensitive Receiver (Air-Borne)
- Facade Facing
- Full Enclosure Covering Both Tracks, 6m high
- Semi-enclosure Covering Northern Track only, 6m high

Figure 1

As-built Drawing of Operational Air-borne Noise Mitigation Measures



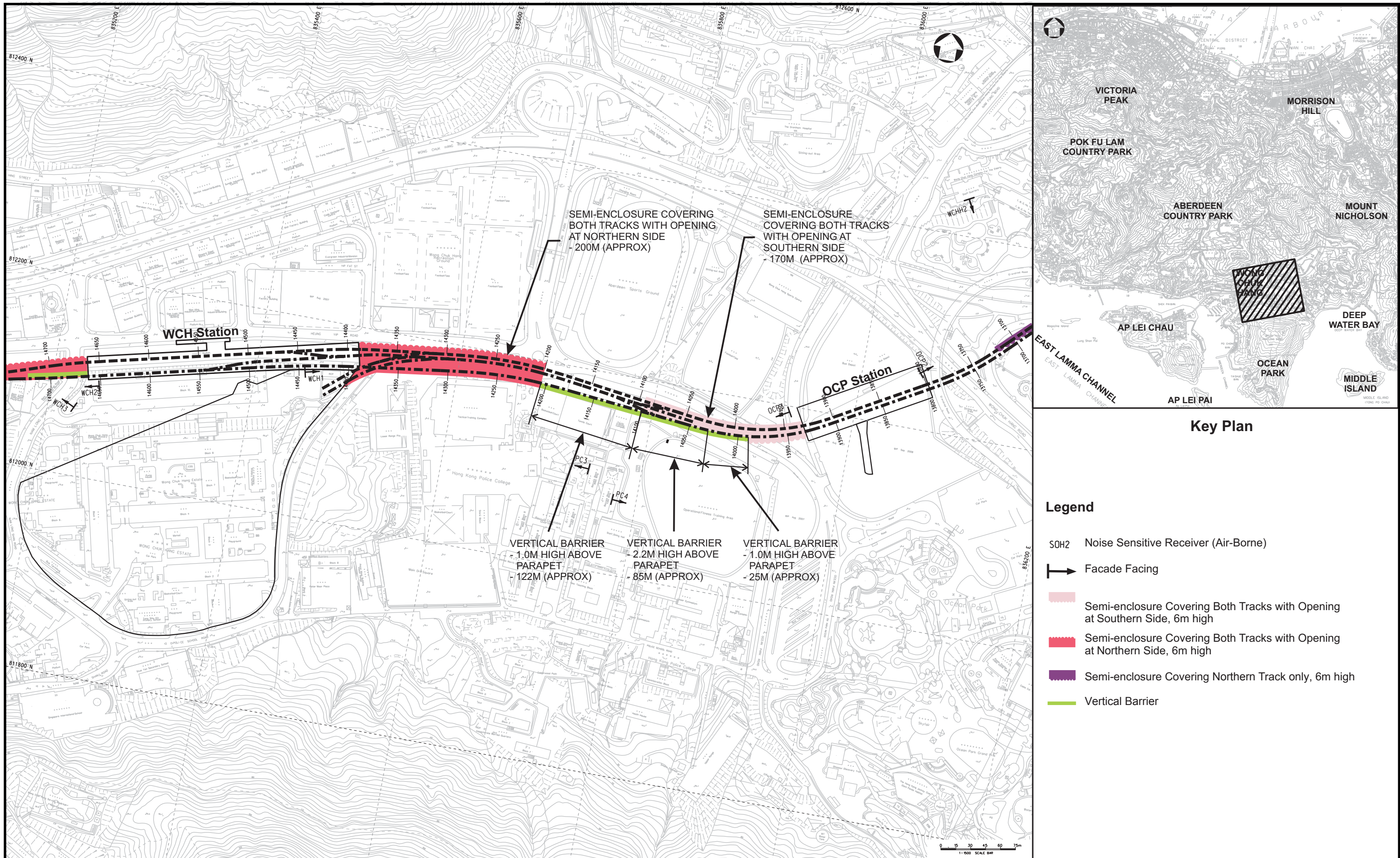


Figure 2

As-built Drawing of Operational Air-borne Noise Mitigation Measures

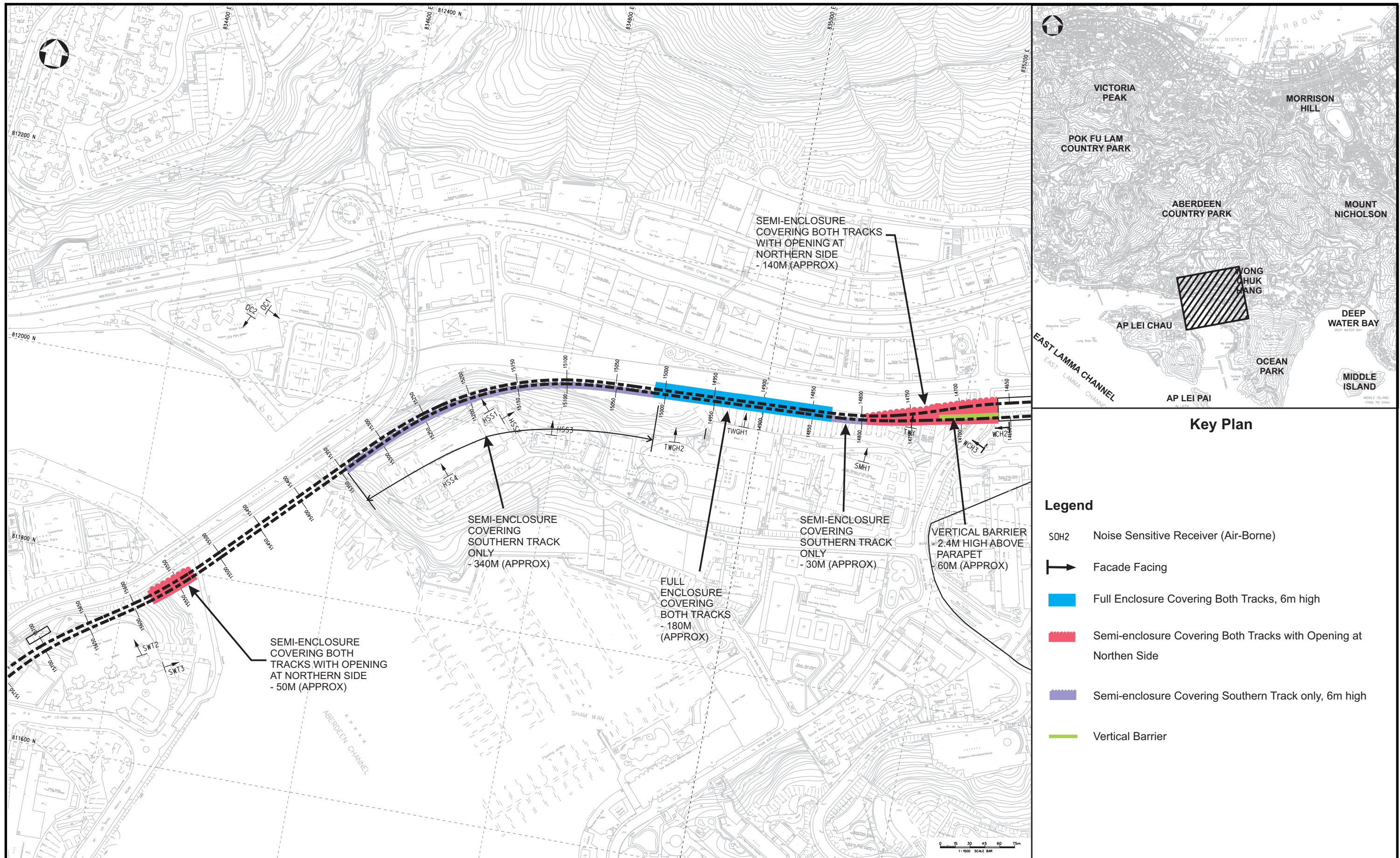


Figure 3

As-built Drawing of Operational Air-borne Noise Mitigation Measures