

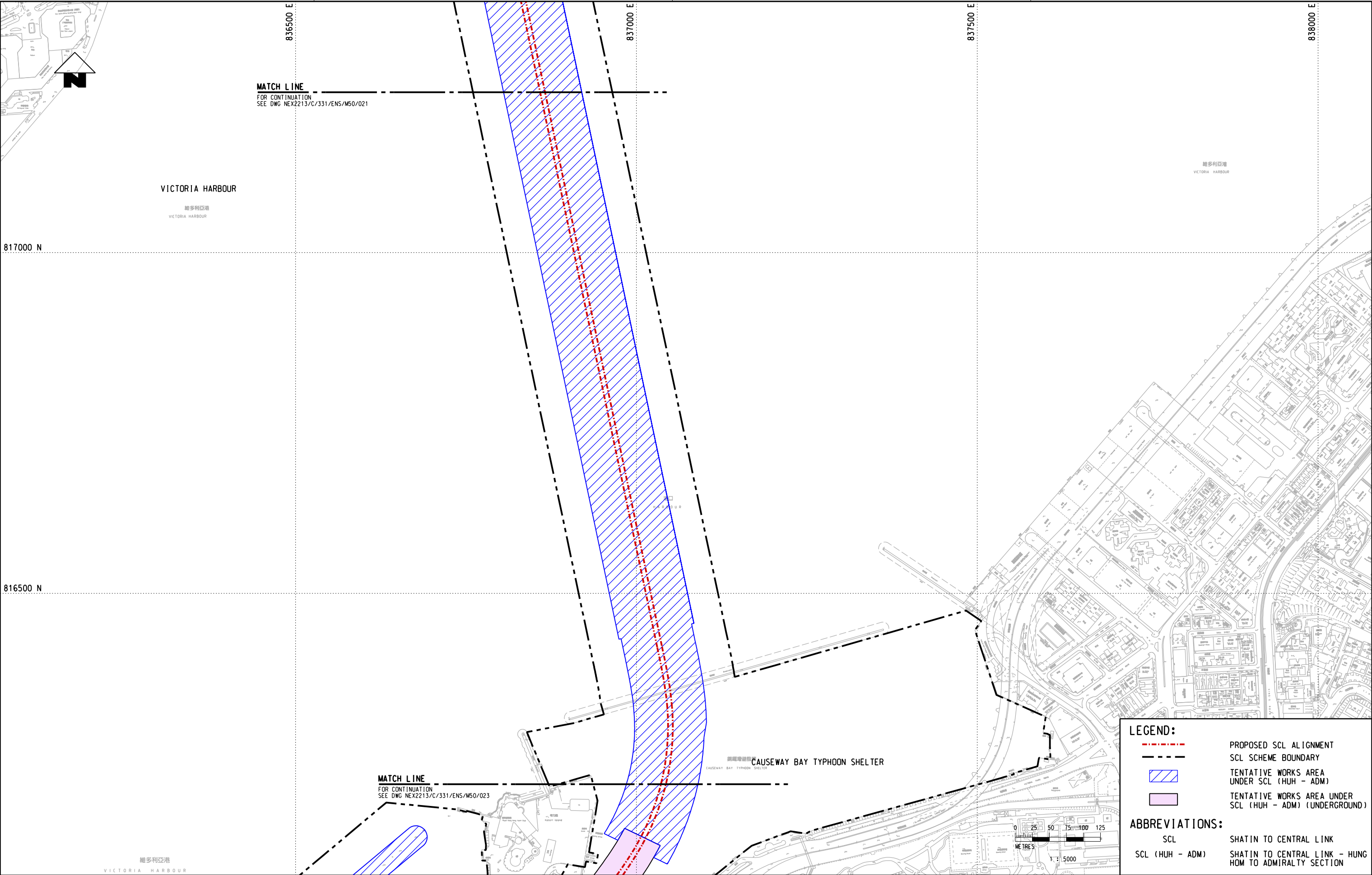


REV		DESCRIPTION		BY	DATE	APPROVED	REV	DESCRIPTION		BY	DATE	APPROVED	DRAWN YJP DESIGNED --- CHECKED --- APPROVED --- DATE 13/OCT/2010 DO NOT SCALE DRAWINGS- ALL DIMENSIONS SHALL BE VERIFIED ON SITE. © MTR CORPORATION LIMITED 2008 COPYRIGHT IN RESPECT OF THIS DRAWING / DOCUMENT IS OWNED BY THE MTR CORPORATION LIMITED OF HONG KONG. NO REPRODUCTION OF THE DRAWING / DOCUMENT OR ANY PART OF WHATEVER MEANS IS PERMITTED WITHOUT THE PRIOR WRITTEN CONSENT OF THE MTR CORPORATION LIMITED.		 SHATIN TO CENTRAL LINK  ORIGINATOR CADD REF. NEX2213/C/331/ENS/M50/021A.dgn		TITLE NEX/2213 EIA STUDY FOR SCL (HUH - ADM) PROJECT ALIGNMENT AND WORKS AREAS SHEET 1 OF 4		SCALE 1 : 5000 (A3)	FIGURE NO. NEX2213/C/331/ENS/M50/021	REV. A
-----	--	-------------	--	----	------	----------	-----	-------------	--	----	------	----------	-------------------------------------------------------------------------------------------------------------------------------------------------------------------------------------------------------------------------------------------------------------------------------------------------------------------------------------------------------------------------------------------------------------------------------------------------	--	----------------------------------------------------------------------------------------------------------------------------------------------------------------------------------------------------------------------------------------------------------------------------	--	---------------------------------------------------------------------------------------------------------	--	------------------------	-----------------------------------------	-----------

Maps reproduced with permission of the Director of Lands, © Hong Kong Government

Plot Drw: R:\ustinet\MTR\PROJECTS\NEX2213\NEX2213_C_331_ENS_M50_022A.dgn
Model Name: NEX2213_C_331_ENS_M50_022A.dgn
File Name: NEX2213_C_331_ENS_M50_022A.dgn



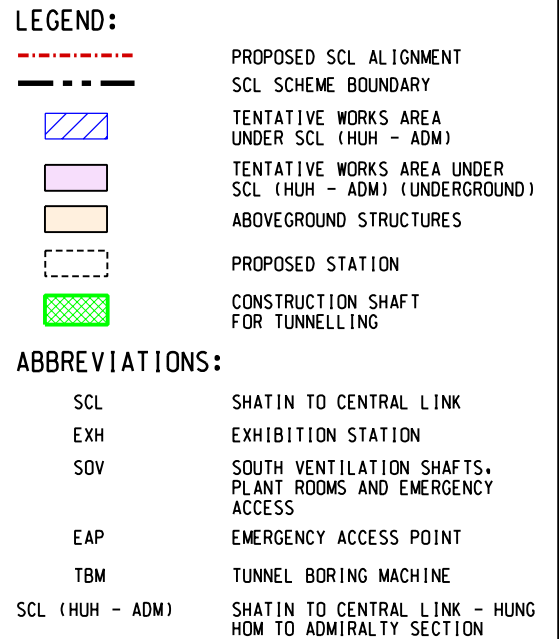
LEGEND:



- PROPOSED SCL ALIGNMENT
- SCL SCHEME BOUNDARY
- TENTATIVE WORKS AREA UNDER SCL (HUH - ADM)
- TENTATIVE WORKS AREA UNDER SCL (HUH - ADM) (UNDERGROUND)

ABBREVIATIONS:

- SCL SHATIN TO CENTRAL LINK
- SCL (HUH - ADM) SHATIN TO CENTRAL LINK - HUNG HOM TO ADMIRALTY SECTION

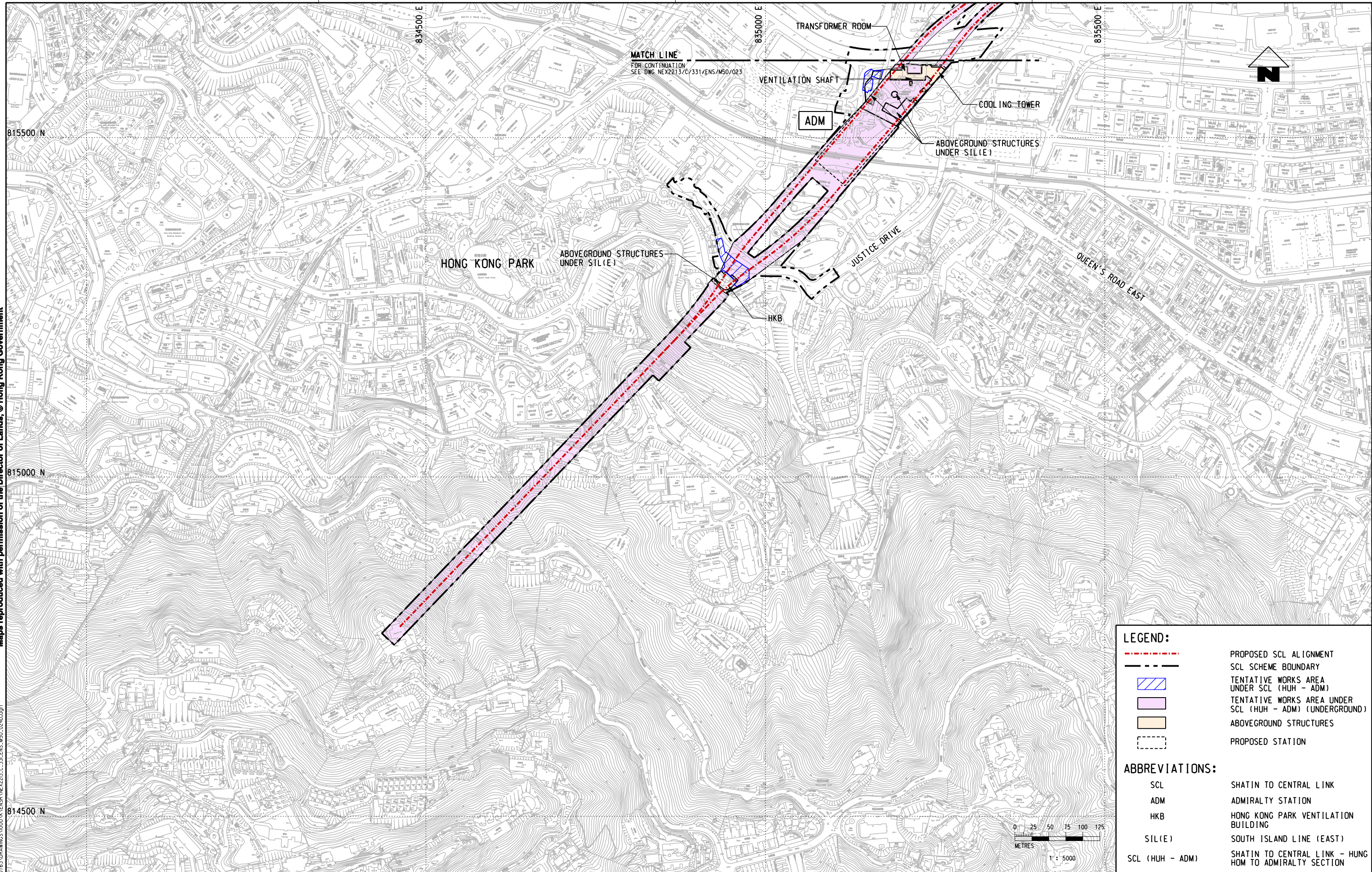
REV				DESCRIPTION				BY				DATE				APPROVED			
DRAWN				DXL				DESIGNED				CHECKED				APPROVED			
DATE				13/OCT/2010				ORIGINATOR				CADD REF.				NEX2213_C_331_ENS_M50_022A.dgn			
TITLE				NEX/2213				EIA STUDY FOR SCL (HUH - ADM)				PROJECT ALIGNMENT AND WORKS AREAS				SHEET 2 OF 4			
SCALE				1 : 5000 (A3)				FIGURE NO.				NEX2213/C/331/ENS/M50/022				REV.			
												A							



Main Projects/Notes										DRAWN ZRH																				TITLE																																																																																																																																																																																																																																																																																																																																																																																																																																																																																																																																																																																																																																																																																																																																																																																																																																																																																																																																																																																																																																																																																																																																																																																																																																																																																																																																																																																																																																																																																																																																																																																																																																																																																																																																																																																																																																																																																																																																																																																																																																																																																																																																																																																																																																																																																																																																																																																																																																																																																																																																																																																																																																																																																																																																																																																																																																																																																																																																																																																																																																																																																																																																																																																																																																																																																																																																																																																																																																																																																																																																																																																																																																																																																																																																																																																																																																																																																																																																																																																																																																																																																																																																																																																																																																																																																																																																																																																																																																																																																																																																																																																																																																																																																																																																																																																																																																																																																																																																																																																																																																																																																																																																											
										DESIGNED ---										SHATIN TO CENTRAL LINK										NEX/2213																																																																																																																																																																																																																																																																																																																																																																																																																																																																																																																																																																																																																																																																																																																																																																																																																																																																																																																																																																																																																																																																																																																																																																																																																																																																																																																																																																																																																																																																																																																																																																																																																																																																																																																																																																																																																																																																																																																																																																																																																																																																																																																																																																																																																																																																																																																																																																																																																																																																																																																																																																																																																																																																																																																																																																																																																																																																																																																																																																																																																																																																																																																																																																																																																																																																																																																																																																																																																																																																																																																																																																																																																																																																																																																																																																																																																																																																																																																																																																																																																																																																																																																																																																																																																																																																																																																																																																																																																																																																																																																																																																																																																																																																																																																																																																																																																																																																																																																																																																																																																																																																																																																																											
										CHECKED LCR																				EIA STUDY FOR SCL (HUH - ADM)																																																																																																																																																																																																																																																																																																																																																																																																																																																																																																																																																																																																																																																																																																																																																																																																																																																																																																																																																																																																																																																																																																																																																																																																																																																																																																																																																																																																																																																																																																																																																																																																																																																																																																																																																																																																																																																																																																																																																																																																																																																																																																																																																																																																																																																																																																																																																																																																																																																																																																																																																																																																																																																																																																																																																																																																																																																																																																																																																																																																																																																																																																																																																																																																																																																																																																																																																																																																																																																																																																																																																																																																																																																																																																																																																																																																																																																																																																																																																																																																																																																																																																																																																																																																																																																																																																																																																																																																																																																																																																																																																																																																																																																																																																																																																																																																																																																																																																																																																																																																																																																																																																																																											
										APPROVED ---																				PROJECT ALIGNMENT AND WORKS AREAS																																																																																																																																																																																																																																																																																																																																																																																																																																																																																																																																																																																																																																																																																																																																																																																																																																																																																																																																																																																																																																																																																																																																																																																																																																																																																																																																																																																																																																																																																																																																																																																																																																																																																																																																																																																																																																																																																																																																																																																																																																																																																																																																																																																																																																																																																																																																																																																																																																																																																																																																																																																																																																																																																																																																																																																																																																																																																																																																																																																																																																																																																																																																																																																																																																																																																																																																																																																																																																																																																																																																																																																																																																																																																																																																																																																																																																																																																																																																																																																																																																																																																																																																																																																																																																																																																																																																																																																																																																																																																																																																																																																																																																																																																																																																																																																																																																																																																																																																																																																																																																																																																																																																											
										DATE ---										ORIGINATOR										SHEET 3 OF 4																																																																																																																																																																																																																																																																																																																																																																																																																																																																																																																																																																																																																																																																																																																																																																																																																																																																																																																																																																																																																																																																																																																																																																																																																																																																																																																																																																																																																																																																																																																																																																																																																																																																																																																																																																																																																																																																																																																																																																																																																																																																																																																																																																																																																																																																																																																																																																																																																																																																																																																																																																																																																																																																																																																																																																																																																																																																																																																																																																																																																																																																																																																																																																																																																																																																																																																																																																																																																																																																																																																																																																																																																																																																																																																																																																																																																																																																																																																																																																																																																																																																																																																																																																																																																																																																																																																																																																																																																																																																																																																																																																																																																																																																																																																																																																																																																																																																																																																																																																																																																																																																																																																																											
										DATE 02/AUG/2011																																																																																																																																																																																																																																																																																																																																																																																																																																																																																																																																																																																																																																																																																																																																																																																																																																																																																																																																																																																																																																																																																																																																																																																																																																																																																																																																																																																																																																																																																																																																																																																																																																																																																																																																																																																																																																																																																																																																																																																																																																																																																																																																																																																																																																																																																																																																																																																																																																																																																																																																																																																																																																																																																																																																																																																																																																																																																																																																																																																																																																																																																																																																																																																																																																																																																																																																																																																																																																																																																																																																																																																																																																																																																																																																																																																																																																																																																																																																																																																																																																																																																																																																																																																																																																																																																																																																																																																																																																																																																																																																																																																																																																																																																																																																																																																																																																																																																																																																																																																																																																																																																																																																																															
										DO NOT SCALE DRAWINGS- ALL DIMENSIONS SHALL BE VERIFIED ON SITE. © MTR CORPORATION LIMITED 2008 COPYRIGHT IN RESPECT OF THIS DRAWING / DOCUMENT IS OWNED BY THE MTR CORPORATION LIMITED OF HONG KONG. NO REPRODUCTION OF THE DRAWING / DOCUMENT OR ANY PART BY WATER MARK IS PERMITTED WITHOUT THE PRIOR WRITTEN CONSENT OF THE MTR CORPORATION LIMITED.										CADD REF.										SCALE																																																																																																																																																																																																																																																																																																																																																																																																																																																																																																																																																																																																																																																																																																																																																																																																																																																																																																																																																																																																																																																																																																																																																																																																																																																																																																																																																																																																																																																																																																																																																																																																																																																																																																																																																																																																																																																																																																																																																																																																																																																																																																																																																																																																																																																																																																																																																																																																																																																																																																																																																																																																																																																																																																																																																																																																																																																																																																																																																																																																																																																																																																																																																																																																																																																																																																																																																																																																																																																																																																																																																																																																																																																																																																																																																																																																																																																																																																																																																																																																																																																																																																																																																																																																																																																																																																																																																																																																																																																																																																																																																																																																																																																																																																																																																																																																																																																																																																																																																																																																																																																																																																																																											
REV										DESCRIPTION										BY										DATE										APPROVED										REV										DESCRIPTION										BY										DATE										APPROVED										REV										DESCRIPTION										BY										DATE										APPROVED										REV										DESCRIPTION										BY										DATE										APPROVED										REV										DESCRIPTION										BY										DATE										APPROVED										REV										DESCRIPTION										BY										DATE										APPROVED										REV										DESCRIPTION										BY										DATE										APPROVED										REV										DESCRIPTION										BY										DATE										APPROVED										REV										DESCRIPTION										BY										DATE										APPROVED										REV										DESCRIPTION										BY										DATE										APPROVED										REV										DESCRIPTION										BY										DATE										APPROVED										REV										DESCRIPTION										BY										DATE										APPROVED										REV										DESCRIPTION										BY										DATE										APPROVED										REV										DESCRIPTION										BY										DATE										APPROVED										REV										DESCRIPTION										BY										DATE										APPROVED										REV										DESCRIPTION										BY										DATE										APPROVED										REV										DESCRIPTION										BY										DATE										APPROVED										REV										DESCRIPTION										BY										DATE										APPROVED										REV										DESCRIPTION										BY										DATE										APPROVED										REV										DESCRIPTION										BY										DATE										APPROVED										REV										DESCRIPTION										BY										DATE										APPROVED										REV										DESCRIPTION										BY										DATE										APPROVED										REV										DESCRIPTION										BY										DATE										APPROVED										REV										DESCRIPTION										BY										DATE										APPROVED										REV										DESCRIPTION										BY										DATE										APPROVED										REV										DESCRIPTION										BY										DATE										APPROVED										REV										DESCRIPTION										BY										DATE										APPROVED										REV										DESCRIPTION										BY										DATE										APPROVED										REV										DESCRIPTION										BY										DATE										APPROVED										REV										DESCRIPTION										BY										DATE										APPROVED										REV										DESCRIPTION										BY										DATE										APPROVED										REV										DESCRIPTION										BY										DATE										APPROVED										REV										DESCRIPTION										BY										DATE										APPROVED										REV										DESCRIPTION										BY										DATE										APPROVED										REV										DESCRIPTION										BY										DATE										APPROVED										REV										DESCRIPTION										BY										DATE										APPROVED										REV										DESCRIPTION										BY										DATE										APPROVED										REV										DESCRIPTION										BY										DATE										APPROVED										REV										DESCRIPTION										BY										DATE										APPROVED										REV										DESCRIPTION										BY										DATE										APPROVED										REV										DESCRIPTION										BY										DATE										APPROVED										REV										DESCRIPTION										BY										DATE										APPROVED										REV										DESCRIPTION										BY										DATE										APPROVED										REV										DESCRIPTION										BY										DATE										APPROVED										REV										DESCRIPTION										BY										DATE										APPROVED										REV										DESCRIPTION										BY										DATE										APPROVED										REV										DESCRIPTION										BY										DATE										APPROVED										REV										DESCRIPTION										BY										DATE										APPROVED										REV										DESCRIPTION										BY										DATE										APPROVED										REV										DESCRIPTION										BY										DATE										APPROVED										REV										DESCRIPTION										BY										DATE										APPROVED										REV										DESCRIPTION										BY										DATE										APPROVED										REV										DESCRIPTION										BY										DATE										APPROVED										REV										DESCRIPTION										BY										DATE										APPROVED										REV										DESCRIPTION										BY										DATE										APPROVED										REV										DESCRIPTION										BY										DATE										APPROVED										REV										DESCRIPTION										BY										DATE										APPROVED										REV										DESCRIPTION										BY										DATE										APPROVED										REV										DESCRIPTION										BY										DATE										APPROVED										REV										DESCRIPTION										BY										DATE										APPROVED										REV										DESCRIPTION										BY										DATE										APPROVED										REV										DESCRIPTION										BY										DATE										APPROVED										REV										DESCRIPTION										BY										DATE										APPROVED										REV										DESCRIPTION										BY										DATE										APPROVED										REV										DESCRIPTION										BY										DATE										APPROVED										REV										DESCRIPTION										BY										DATE										APPROVED										REV										DESCRIPTION										BY										DATE										APPROVED										REV										DESCRIPTION										BY										DATE										APPROVED										REV										DESCRIPTION										BY										DATE										APPROVED										REV										DESCRIPTION										BY										DATE										APPROVED										REV										DESCRIPTION										BY										DATE										APPROVED										REV										DESCRIPTION										BY										DATE										APPROVED										REV										DESCRIPTION										BY										DATE										APPROVED										REV										DESCRIPTION										BY										DATE										APPROVED										REV										DESCRIPTION										BY										DATE										APPROVED										REV										DESCRIPTION										BY										DATE										APPROVED										REV										DESCRIPTION										BY										DATE										APPROVED										REV										DESCRIPTION										BY										DATE										APPROVED										REV										DESCRIPTION										BY										DATE										APPROVED										REV										DESCRIPTION										BY										DATE										APPROVED										REV										DESCRIPTION										BY										DATE										APPROVED										REV										DESCRIPTION										BY										DATE										APPROVED										REV										DESCRIPTION										BY										DATE										APPROVED										REV										DESCRIPTION										BY										DATE										APPROVED										REV										DESCRIPTION										BY										DATE										APPROVED										REV										DESCRIPTION										BY										DATE										APPROVED										REV										DESCRIPTION										BY										DATE										APPROVED										REV										DESCRIPTION										BY										DATE										APPROVED										REV										DESCRIPTION										BY										DATE										APPROVED										REV										DESCRIPTION										BY										DATE										APPROVED										REV										DESCRIPTION										BY										DATE										APPROVED										REV										DESCRIPTION										BY										DATE										APPROVED										REV										DESCRIPTION										BY										DATE										APPROVED										REV										DESCRIPTION										BY										DATE										APPROVED										REV										DESCRIPTION										BY										DATE										APPROVED										REV										DESCRIPTION										BY										DATE										APPROVED										REV										DESCRIPTION										BY										DATE										APPROVED										REV										DESCRIPTION										BY										DATE										APPROVED										REV										DESCRIPTION										BY										DATE										APPROVED										REV										DESCRIPTION									

Maps reproduced with permission of the Director of Lands, © Hong Kong Government

Plot Drw: R:\usr\mtr\p10\DRIVER\WINDOWS\33 COL\019.dgn
Model Name: NEX2213_C_331_ENS_M50_024.dgn
Printed By: ZHONG
Date: 14/11/2011
Scale: 1:5000

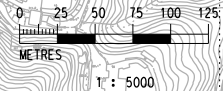


LEGEND:

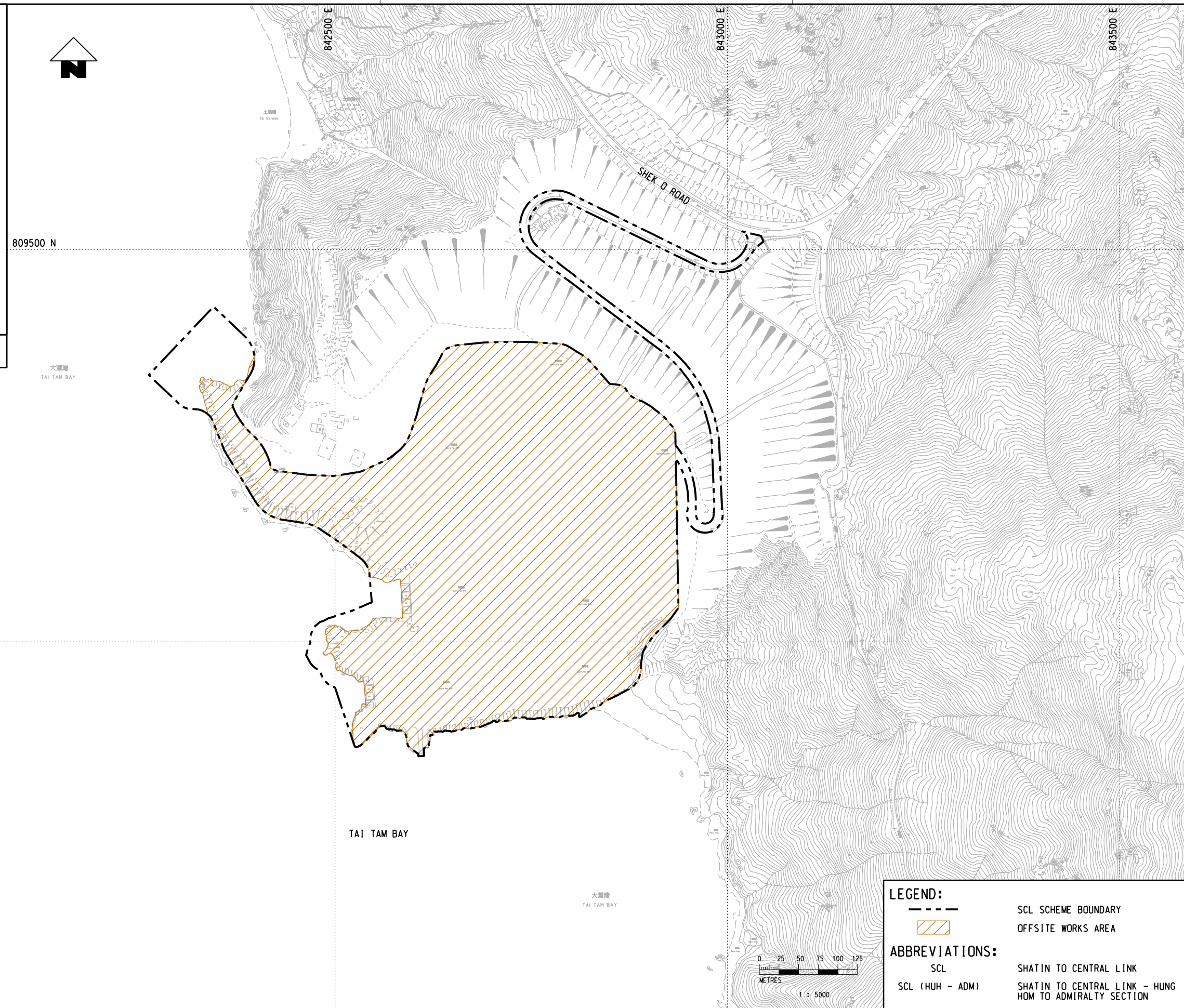
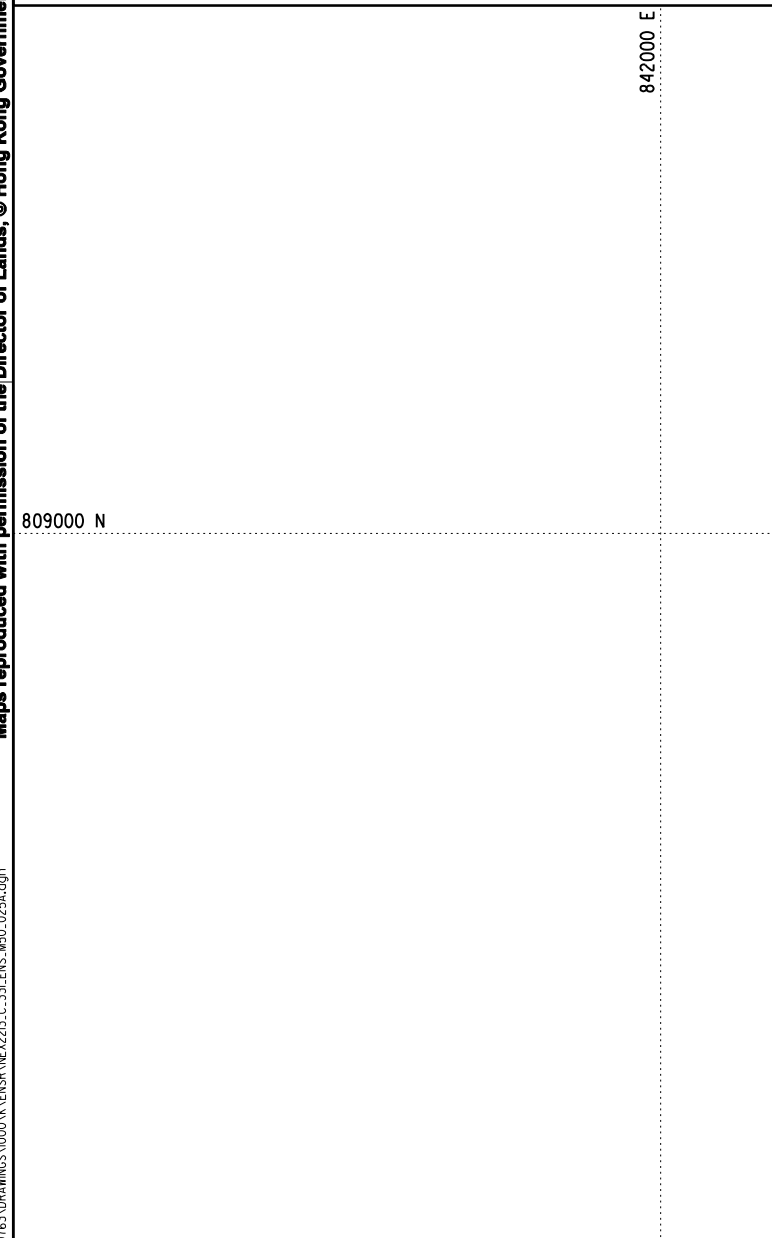
- PROPOSED SCL ALIGNMENT
- SCL SCHEME BOUNDARY
- TENTATIVE WORKS AREA UNDER SCL (HUH - ADM)
- TENTATIVE WORKS AREA UNDER SCL (HUH - ADM) (UNDERGROUND)
- ABOVEGROUND STRUCTURES
- PROPOSED STATION



ABBREVIATIONS:

SCL	SHATIN TO CENTRAL LINK
ADM	ADMIRALTY STATION
HKB	HONG KONG PARK VENTILATION BUILDING
SIL(E)	SOUTH ISLAND LINE (EAST)
SCL (HUH - ADM)	SHATIN TO CENTRAL LINK - HUNG HOM TO ADMIRALTY SECTION



DRAWN ZRH				DESIGNED ---				CHECKED LCR				APPROVED ---				DATE 04/NOV/2011				ORIGINATOR				CADD REF. NEX2213_C_331_ENS_M50_024.dgn				TITLE			
DO NOT SCALE DRAWINGS. ALL DIMENSIONS SHALL BE VERIFIED ON SITE.				COPYRIGHT © 2008 MTR CORPORATION LIMITED. ALL RIGHTS RESERVED.				REPRODUCTION OF THIS DRAWING OR ANY PART BY WHATEVER MEANS IS PERMITTED WITHOUT THE PRIOR WRITTEN CONSENT OF THE MTR CORPORATION LIMITED.				SCALE 1 : 5000 (A3)				FIGURE NO. NEX2213/C/331/ENS/M50/024				REV. D				SHEET 4 OF 4				PROJECT ALIGNMENT AND WORKS AREAS			



REV		DESCRIPTION			BY	DATE	APPROVED	REV	DESCRIPTION			BY	DATE	APPROVED	<div> <div> DRAWN DESIGNED CHECKED APPROVED DATE </div> <div> LX --- LCR --- 13/OCT/2010 </div> </div> <div> DO NOT SCALE DRAWINGS- ALL DIMENSIONS SHALL BE VERIFIED ON SITE. © MTR CORPORATION LIMITED 2008 COPYRIGHT IN RESPECT OF THIS DRAWING / DOCUMENT IS OWNED BY THE MTR CORPORATION LIMITED OF HONG KONG. NO REPRODUCTION OF THE DRAWING / DOCUMENT OR ANY PART THEREOF IS PERMITTED WITHOUT THE PRIOR WRITTEN CONSENT OF THE MTR CORPORATION LIMITED. </div>	<div>  </div> <div> SHATIN TO CENTRAL LINK  </div>	<div> CADD REF. NEX2213/C-331.ENS.M50.025A.dgn </div>	<div> TITLE NEX/2213 EIA STUDY FOR SCL (HUH - ADM) OFFSITE WORKS AREA </div>	<div> SCALE 1 : 5000 (A3) </div>	<div> FIGURE NO. NEX2213/C/331/ENS/M50/025 </div>	<div> REV. A </div>
-----	--	-------------	--	--	----	------	----------	-----	-------------	--	--	----	------	----------	-------------------------------------------------------------------------------------------------------------------------------------------------------------------------------------------------------------------------------------------------------------------------------------------------------------------------------------------------------------------------------------------------------------------------------------------------------------------------------------------------------------	----------------------------------------------------------------------------------------------------------------------------------------------------------------------------------------------------------------------------------------	------------------------------------------------------------	---------------------------------------------------------------------------------------------	---------------------------------------	--------------------------------------------------------	--------------------------