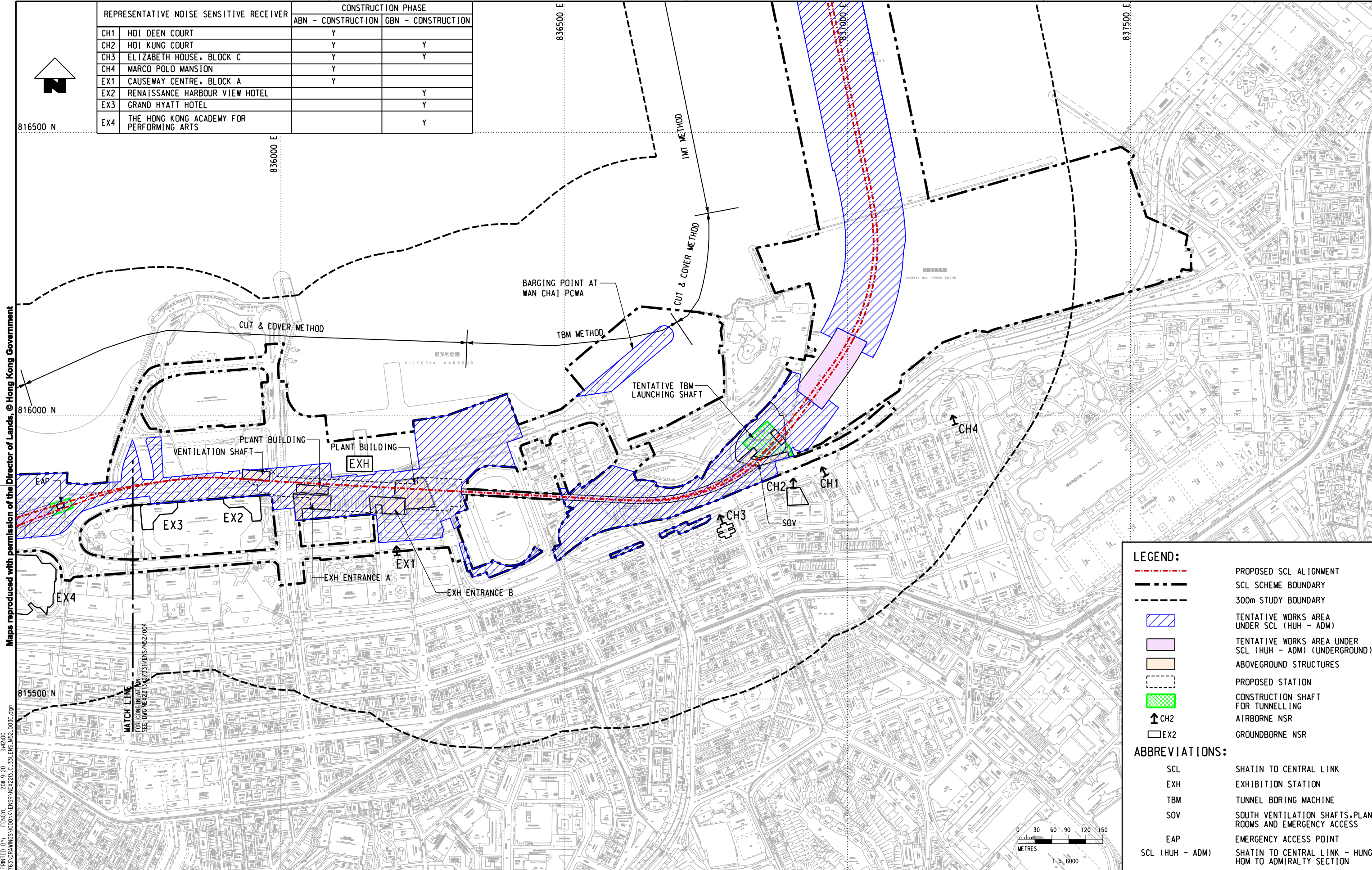


Maps reproduced with permission of the Director of Lands, © Hong Kong Government

REPRESENTATIVE NOISE SENSITIVE RECEIVER	CONSTRUCTION PHASE	
	ABN - CONSTRUCTION	GBN - CONSTRUCTION
CH1	HOI DEEN COURT	Y
CH2	HOI KUNG COURT	Y
CH3	ELIZABETH HOUSE, BLOCK C	Y
CH4	MARCO POLO MANSION	Y
EX1	CAUSEWAY CENTRE, BLOCK A	Y
EX2	RENAISSANCE HARBOUR VIEW HOTEL	Y
EX3	GRAND HYATT HOTEL	Y
EX4	THE HONG KONG ACADEMY FOR PERFORMING ARTS	Y




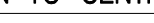
LEGEND:

- PROPOSED SCL ALIGNMENT
- SCL SCHEME BOUNDARY
- 300m STUDY BOUNDARY
- TENTATIVE WORKS AREA UNDER SCL (HUH - ADM)
- TENTATIVE WORKS AREA UNDER SCL (HUH - ADM) (UNDERGROUND)
- ABOVEGROUND STRUCTURES
- PROPOSED STATION
- CONSTRUCTION SHAFT FOR TUNNELLING
- AIRBORNE NSR
- GROUNDBORNE NSR

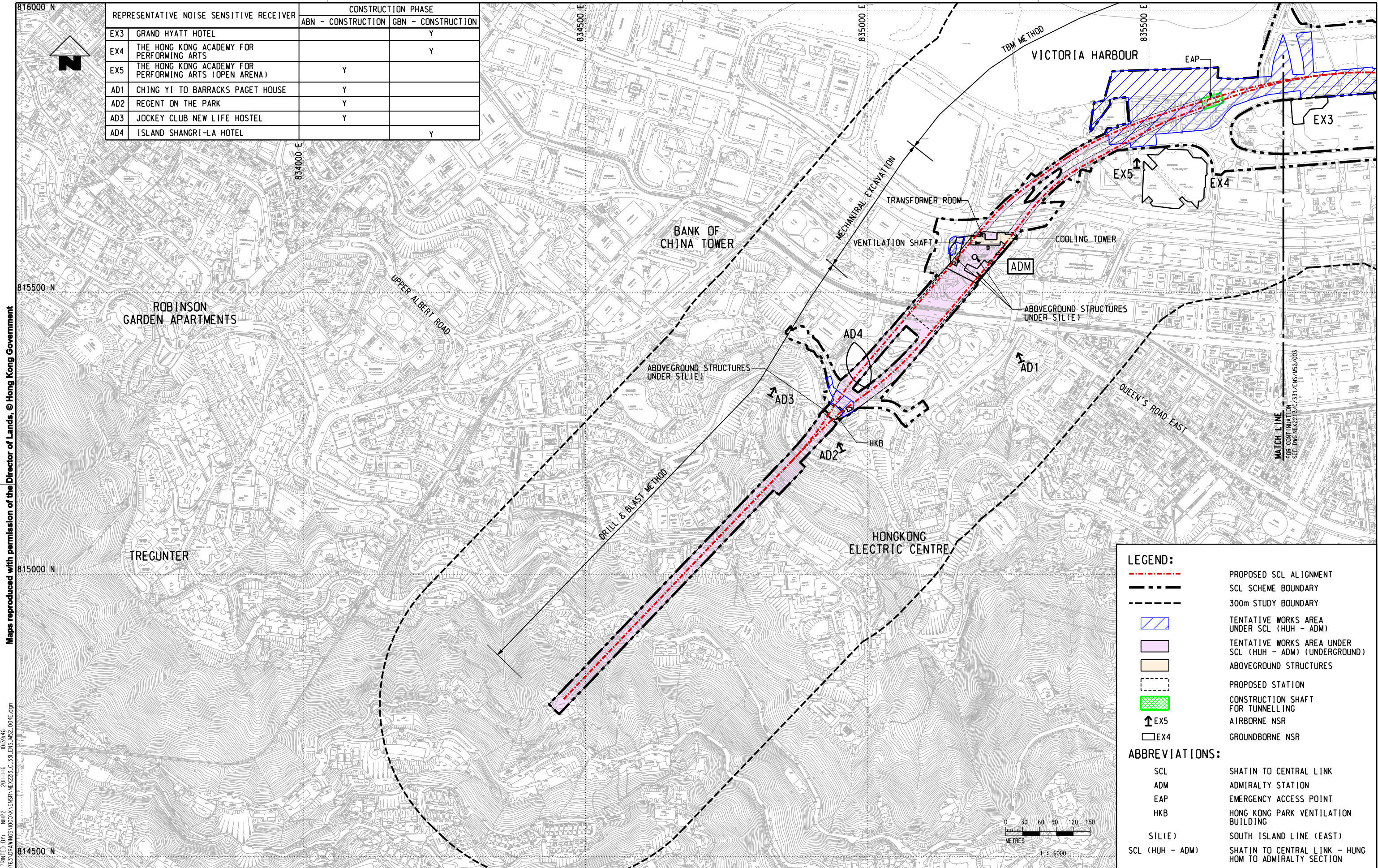
ABBREVIATIONS:

SCL	SHATIN TO CENTRAL LINK
EXH	EXHIBITION STATION
TBM	TUNNEL BORING MACHINE
SOV	SOUTH VENTILATION SHAFTS, PLANT ROOMS AND EMERGENCY ACCESS
EAP	EMERGENCY ACCESS POINT
SCL (HUH - ADM)	SHATIN TO CENTRAL LINK - HUNG HOM TO ADMIRALTY SECTION

Plot Draw: MTR Plot Driver Windows V3 Color Plot
Model Name: NEX2213/C/331/ENS/M52/003C.dgn
File Name: NEX2213/C/331/ENS/M52/003C.dgn

FILE NAME: Default M:\projects\6000										DRAWN HY				TITLE NEX/2213 EIA STUDY FOR SCL (HUH - ADM) LOCATIONS OF REPRESENTATIVE NOISE SENSITIVE RECEIVERS FOR CONSTRUCTION PHASE	
										DESIGNED ---					
										CHECKED LCR		ORIGINATOR 		SCALE 1 : 6000 (A3)	
										APPROVED ---					
										DATE 02/AUG/2011		CADD REF. NEX2213.C_331.ENS_M52_003C.dgn		FIGURE NO. NEX2213/C/331/ENS/M52/003	
										DO NOT SCALE DRAWINGS. ALL DIMENSIONS SHALL BE VERIFIED ON SITE. © MTR CORPORATION LIMITED 2008. COPYRIGHT IN RESPECT OF THIS DRAWING / DOCUMENT IS OWNED BY THE MTR CORPORATION LIMITED OF HONG KONG. NO REPRODUCTION OF THE DRAWING / DOCUMENT OR ANY PART BY WHATEVER MEANS IS PERMITTED WITHOUT THE PRIOR WRITTEN CONSENT OF THE MTR CORPORATION LIMITED.					
REV	DESCRIPTION	BY	DATE	APPROVED	REV	DESCRIPTION	BY	DATE	APPROVED					REV.	
														C	

REPRESENTATIVE NOISE SENSITIVE RECEIVER		CONSTRUCTION PHASE	
		ABN - CONSTRUCTION	GBN - CONSTRUCTION
EX3	GRAND HYATT HOTEL		Y
EX4	THE HONG KONG ACADEMY FOR PERFORMING ARTS		Y
EX5	THE HONG KONG ACADEMY FOR PERFORMING ARTS (OPEN ARENA)	Y	
AD1	CHING YI TO BARRACKS PAGET HOUSE	Y	
AD2	REGENT ON THE PARK	Y	
AD3	JOCKEY CLUB NEW LIFE HOSTEL	Y	
AD4	ISLAND SHANGRI-LA HOTEL		Y

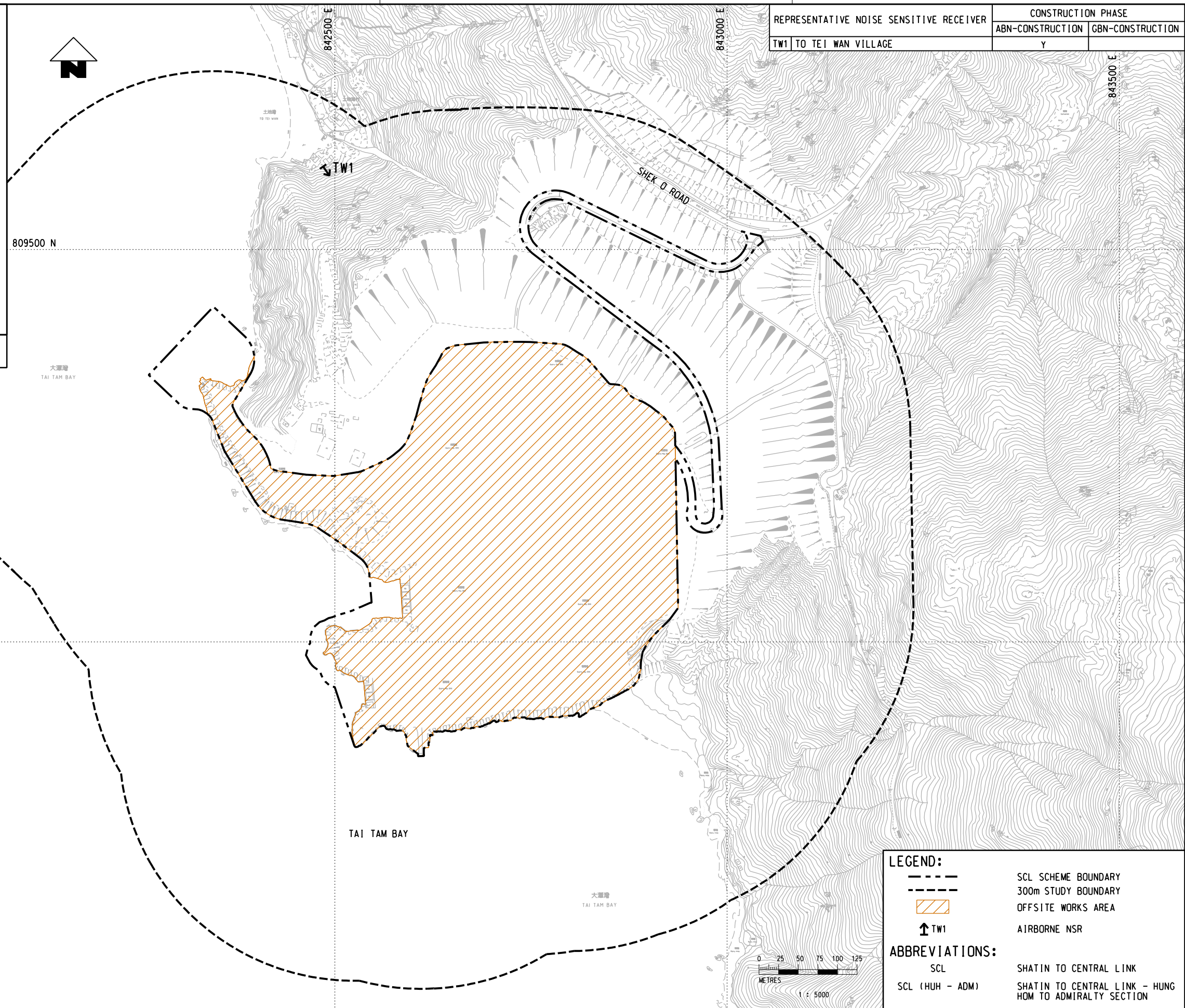
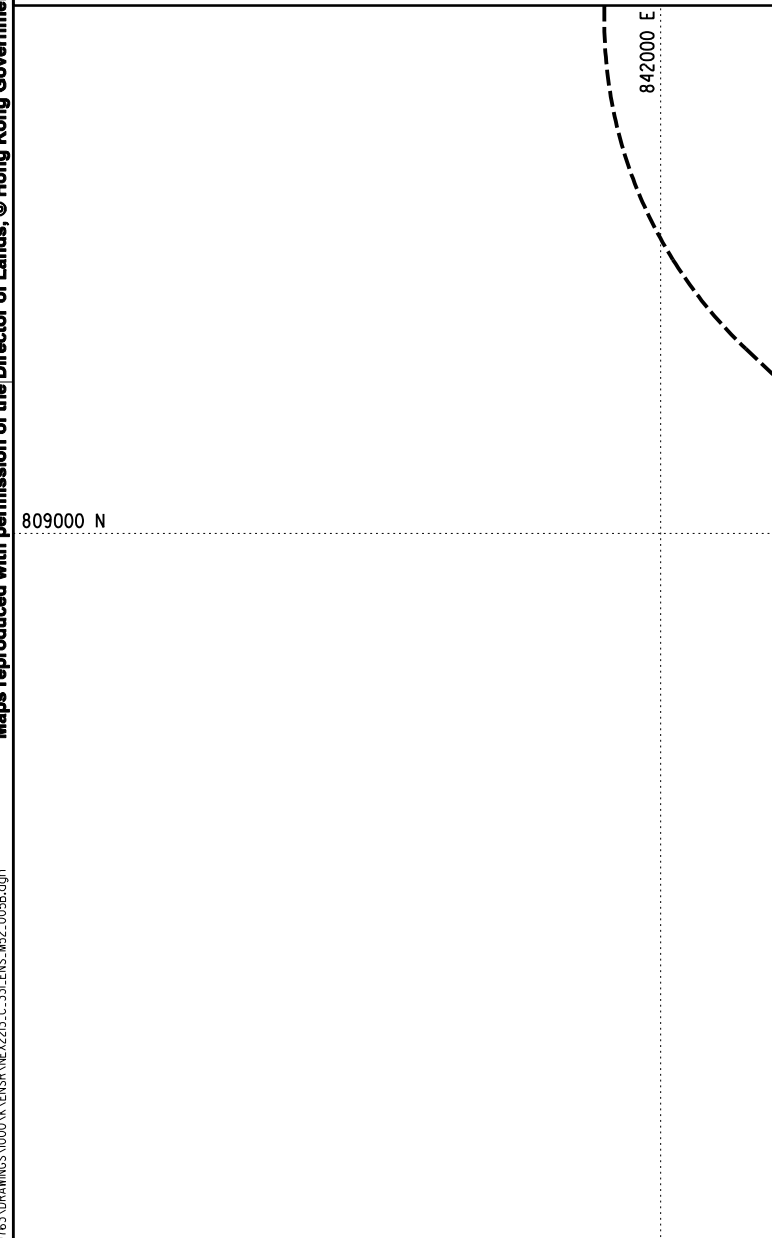


DRAWN	YJP
DESIGNED	---
CHECKED	LCR
APPROVED	---
DATE	04/NOV/2011

SHATIN TO CENTRAL LINK

ART	CADD REF.
-----	-----------

TITLE		
NEX/2213 EIA STUDY FOR SCL (HUH - ADM) LOCATIONS OF REPRESENTATIVE NOISE SENSITIVE RECEIVERS FOR CONSTRUCTION PHASE		
SCALE	FIGURE NO.	REV.
1 : 6000 (A3)	NEX2213/C/331/ENS/M52/004	E



REV		DESCRIPTION		BY	DATE	APPROVED	REV	DESCRIPTION		BY	DATE	APPROVED	<div><div>DRAWN LX</div><div>DESIGNED ---</div><div>CHECKED LCR</div><div>APPROVED ---</div><div>DATE 22/OCT/2010</div><div>DO NOT SCALE DRAWINGS. ALL DIMENSIONS SHALL BE VERIFIED ON SITE. © MTR CORPORATION LIMITED 2008. COPYRIGHT IN RESPECT OF THIS DRAWING / DOCUMENT IS OWNED BY THE MTR CORPORATION LIMITED OF HONG KONG. NO REPRODUCTION OF THE DRAWING / DOCUMENT OR ANY PART BY ANY MEANS, IN ANY FORM OR BY ANY MEANS, IS PERMITTED WITHOUT THE PRIOR WRITTEN CONSENT OF THE MTR CORPORATION LIMITED.</div></div>		<div><div><div><div><div><div></div><div>MTR</div></div></div><div>SHATIN TO CENTRAL LINK</div><div>ORIGINATOR</div><div>AECOM</div></div><div>CADD REF. NEX2213-C_331_ENS_M52_005B.dgn</div></div></div>		TITLE NEX/2213 EIA STUDY FOR SCL (HUH - ADM) LOCATION OF REPRESENTATIVE NOISE SENSITIVE RECEIVERS FOR CONSTRUCTION PHASE (OFFSITE)		SCALE 1 : 5000 (A3)	FIGURE NO. NEX2213/C/331/ENS/M52/005	REV. B
-----	--	-------------	--	----	------	----------	-----	-------------	--	----	------	----------	--	--	---	--	---	--	------------------------	---	-----------