

The Park

Development for West Kowloon Cultural District

SUBMISSION OF TREE AND TURF GRASS PLANTING AND LANDSCAPE PLANS

Revision	02
Date of Issue	28 MAY 2019
Compiled by	Kate Lau
Approved by	Mark Ng

Design Consultancy
for the Park Development
for West Kowloon Cultural District
Submission of Tree and Turf Grass Planting and Landscape Plans

1 OBJECTIVE AND PURPOSE OF THE REPORT

1.1.1 Further to the approval of the Environmental Impact Assessment (EIA) Report in the register (AEIAR-178/2013), the project proponent is required to submit the Tree and Turf Grass Planting and Landscape Plan to comply with the Condition of Approval under Section 8(3) of the EIA Ordinance.

This report is prepared for the Park Development for West Kowloon Cultural District only. Tree and Turf Grass Planting and Landscape Plans for other elements of the WKCD are provided under separate cover.

1.1.2 CONTENTS.	1	OBJECTIVE AND PURPOSE OF THE REPORT (P.1)
	2	INTRODUCTION (P.1 – P.2)
	3	LANDSCAPE DESIGN CONCEPT (P.3 – P.9)
	4	APPENDICES
		APPENDIX A TREE PLANTING PLANS (P.12 – P.17)
		APPENDIX B TREE PLANTING SCHEDULE (P. 19 – P. 21)
		APPENDIX C POST-PLANTING CARE PLAN (P.23 – P.35)
		APPENDIX D TREE PRUNING SCHEDULE (P.37 – P.40)
		APPENDIX E CONCEPTUAL LANDSCAPE PROPOSAL (FOR REFERENCE ONLY) (P.42 – P.43)

2 INTRODUCTION

2.1.1 The West Kowloon Cultural District Authority (named “Authority” hereafter) is invested by the Government of Hong Kong Special Administrative Region to meet the long term infrastructure needs of the arts and cultural sector, which is a vital part of any world-class city’s economic and social fabric. The West Kowloon Cultural District Authority (“WKCD”) was established under the West Kowloon Cultural District Authority Ordinance (“WKCD Ordinance”), Cap. 601, to develop the WKCD (named “the Site” hereafter).

The WKCD include:

- i) Planning, design and construction of 17 core arts and cultural facilities (CACF) (comprising 15 performing arts venues, a cultural institution with museum functions (M+) together with its off-site conservatory laboratory and storage facilities, and exhibition centre), other arts and cultural facilities (OACF), Retail, Dining and Entertainment (RDE) facilities, transport facilities and 23 ha public open space (which collectively constitute the “Capital Projects”);
- ii) Planning of the WKCD and project management which include consultancies, technical studies and public consultations for the preparation of a development plan for the whole WKCD site, and project management during the planning and construction stage;

2.1.2 The Design Consultancy for the Park Development for WKCD was appointed in February 2015.

2.1.3 OVERALL LAYOUT PLAN



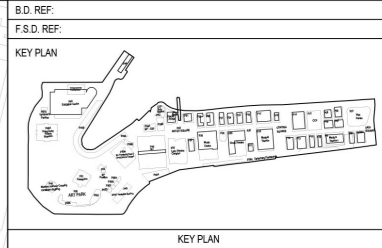
2.1.4 SUBMISSION BOUNDARY □



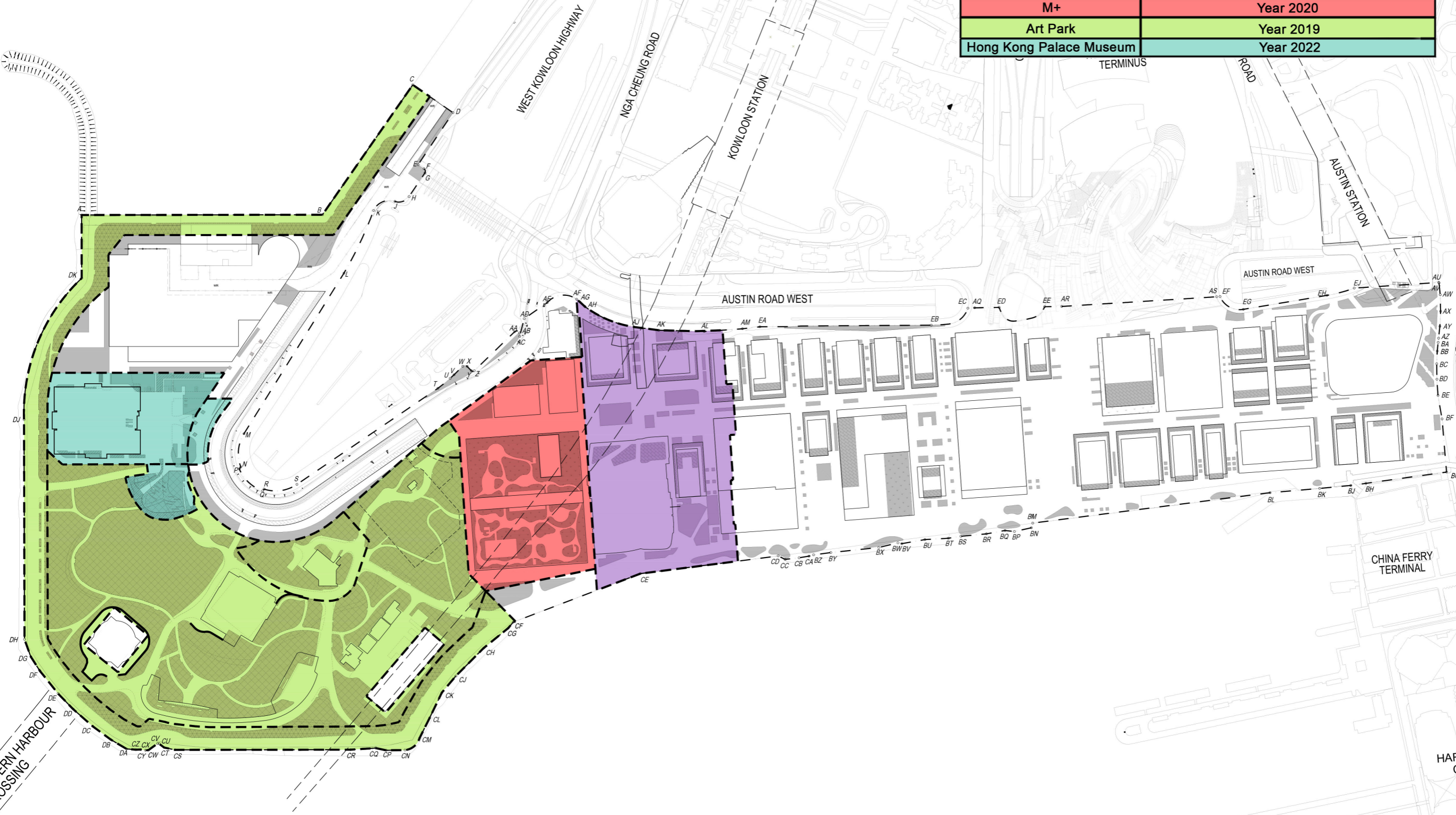
Design Consultant
for the Park Development
for West Kowloon Cultural District
Submission of Tree and Turf Grass Planting and Landscape Plans

2.1.5 LANDSCAPE INTERFACE WITH ADJOINING BOUNDARIES

Phased developments	Anticipated implementation of landscape works (subject to development program)
Lyric Theatre	Year 2023
M+	Year 2020
Art Park	Year 2019
Hong Kong Palace Museum	Year 2022



- LEGEND :**
- - - = WKCD SITE BOUNDARY
 - [Purple dashed line] = LYRIC THEATRE SUBMISSION BOUNDARY
 - [Red dashed line] = M+ SUBMISSION BOUNDARY
 - [Green dashed line] = ART PARK SUBMISSION BOUNDARY
 - [Cyan dashed line] = HONG KONG PALACE MUSEUM SUBMISSION BOUNDARY
- LEGEND FOR TYPE OF GREENERY :**
- [Dark grey hatched] = GREENERY AT PEDESTRIAN ZONE (UNDER PNAP APP-152 PARAGRAPH 18 TABLE 2)
 - [Medium grey hatched] = PARK GREENERY AT PEDESTRIAN ZONE (UNDER PNAP APP-152 PARAGRAPH 18 TABLE 2)
 - [Light grey hatched] = PROMENADE GREENERY AT PEDESTRIAN ZONE (UNDER PNAP APP-152 PARAGRAPH 18 TABLE 2)
 - [Diagonal lines] = OTHER GREEN FEATURES (UNDER PNAP APP-152 APPENDIX F TABLE 2)
 - [Dotted pattern] = PARK OTHER GREEN FEATURES (UNDER PNAP APP-152 APPENDIX F TABLE 2)
 - [Stippled pattern] = TERRACE GREENING (NOT WITHIN 15M FROM GROUND)
 - [Horizontal lines] = SET BACK GREENING (NOT WITHIN 15M FROM GROUND)
 - [Vertical lines] = ROOF GREENING (NOT WITHIN 15M FROM GROUND)
 - [White box] = OTHER GREEN AREA
 - [Thin black line] = PROPOSED BUILDING OUTLINE



XB	04.07.2019	Art Park update for approval package	WKCD/A/ACLA
XA	28.06.2019	Art Park update submission	WKCD/A/ACLA
REV.	DATE	DESCRIPTION	INITIAL
JOB TITLE T&TG/PLP SUBMISSION FOR WEST KOWLOON CULTURAL DISTRICT			
DRAWING TITLE TREE AND TURF GRASS PLANTING AND LANDSCAPE PLAN OVERALL MASTER PLAN			
SCALE	1:2000	PRINTED	A1
CHECKED	J.T.	DATE	04-12-2018
APPROVED	-	DATE	-
DRAWN	TTY	DATE	04-12-2018
CONTRACT NO.			
DRAWING NO. XXXXX-AUT-LAN-DWG-2371-P00-XXXX-WSX-XB			
CAD REF NAME: XXXXX-AUT-LAN-DWG-2371-P00-XXXX-WSX-XB.JPG			REV. XB

3 LANDSCAPE DESIGN CONCEPT

3.1 DESIGN VISION

The vision for the WKCD Park (the Park) is to create a quality green open space that would make Hong Kong proud, and to develop a waterfront park to inspire, promote and encourage cultural pursuits for all. The landscape park will provide a vibrant venue for open-air music, dance and theatre performances, as well as art exhibitions and other cultural programs. Attention has been paid to shaded areas and topographic variation in designing the park, providing pleasant environments and spacious lawns for leisure and relaxation. The Park will be a green oasis with mixed uses such as restaurants, public arts installations and outdoor event lawns. The area of the WKCD Park and associated promenade is about 13ha.

The WKCD park design approach for this performance landscape embodies the culture and magic of the urban forest that is inspired by the Hong Kong's urban forest. The design's vision reinvigorates the Main Lawn and elucidates visual connections between the retail dining and entertainment zone, the Freespace and the M+ museum.

The design scheme aims to provide a new physical connection between the cultural boulevard landscape and the Waterfront promenade. Recreational activities and events are fully embedded into the transformed setting.

3.2 OVERALL ZONING

Our design concept is categorized into six different zones which provide the users with different experiences.

3.2.1 **The Cultural Boulevard** creates a remarkable arrival experience. It is a crucial pedestrian linkage between the main arrival area, M+, M+ pavilion and the Freespace.

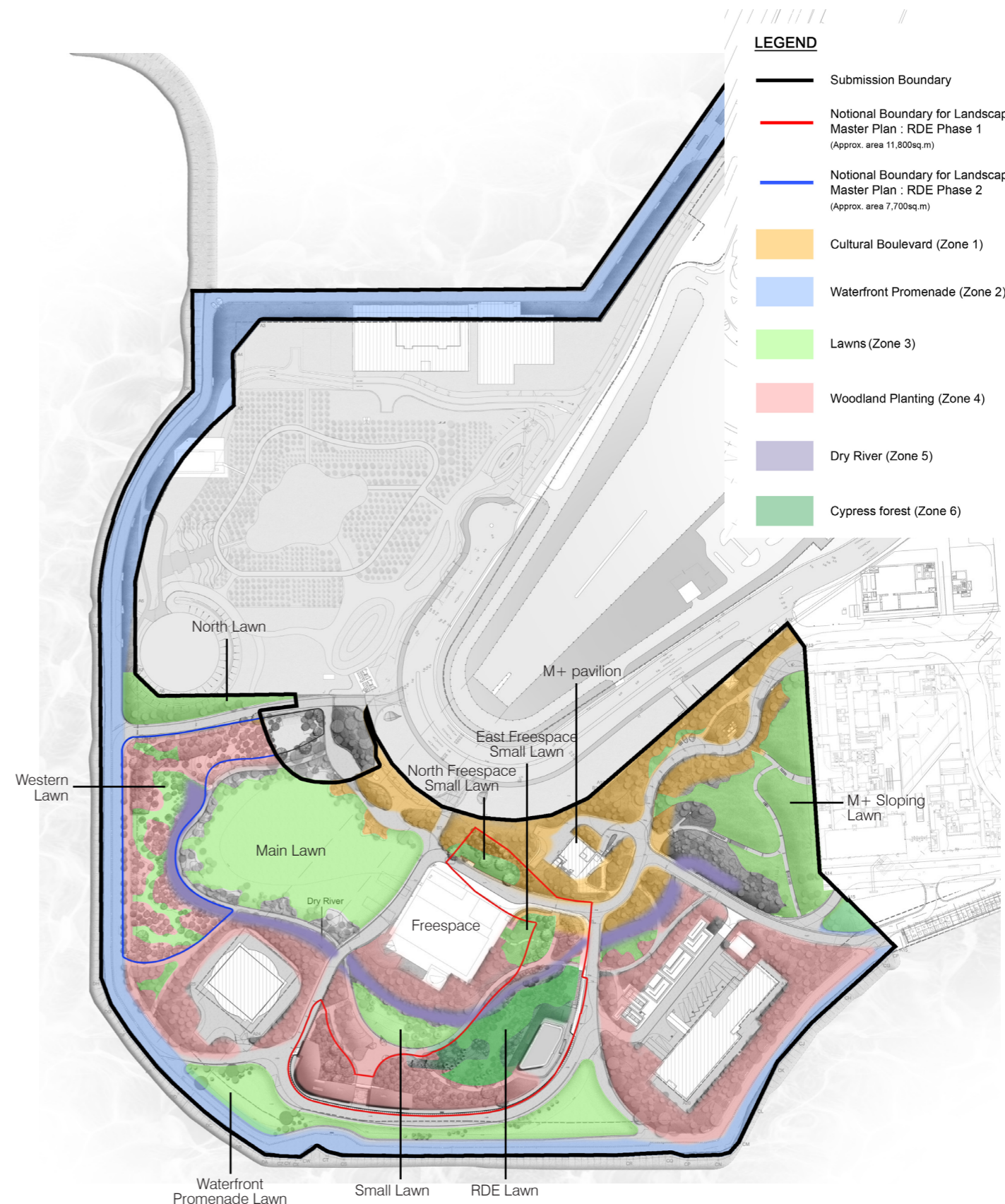
3.2.2 **The Waterfront Promenade** creates a new urban waterfront in West Kowloon. It provides a continuous link with large canopy trees.

3.2.3 **Lawns** provide venues for festival celebrations, recreational activities and art performances.

3.2.4 **Woodland Planting** provides a buffer between the interior lawns and cultural boulevard, and screens the existing ventilation buildings.

3.2.5 **Dry River** offers an iconic space where the canopy of the trees mimic natural river landscape and create a green dome and enclosed intimate space.

3.2.6 **Cypress Forest** creates a dense shaded space with an intimate character for park visitors.



3.3 TREE AND TURF GRASS PLANTING FOR EACH ZONE

3.3.1 The Cultural Boulevard

Running east to west along the inner northern edge of the Park, the Cultural Boulevard provides a meandered pathway with shaded trees and shelters. It connects the Park to the WKCD Avenue at +12.7mPD level. It also provides linkage to various arts and cultural facilities within the Park, including the M+ pavilion, the Freespace (a Freespace Theatre and Outdoor Stage) and the Main Lawn. It will be the main pedestrian pathway within the park.

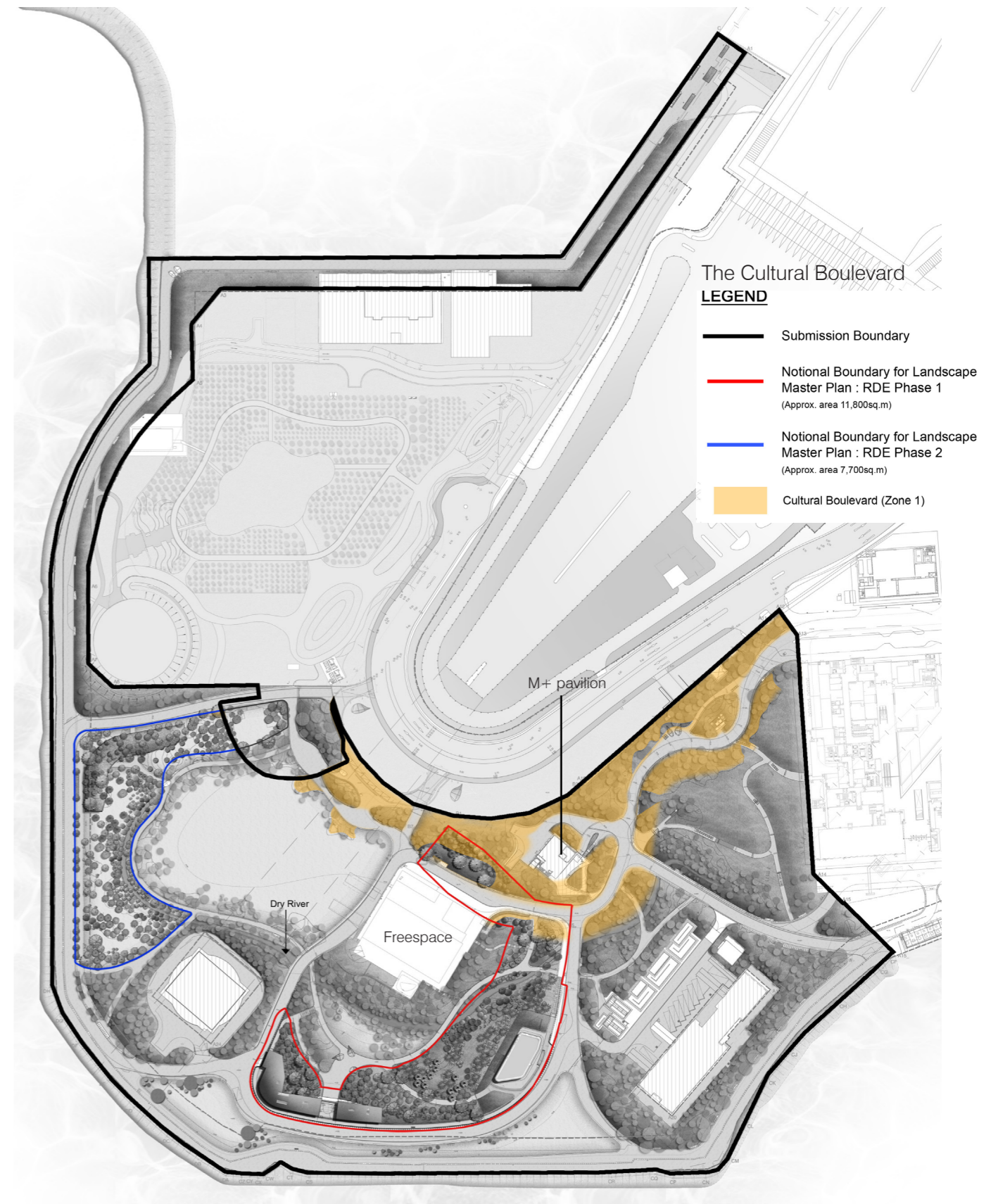
The Cultural Boulevard is a lush nature park with a maximum range of dense biotopes intersected by an aesthetic path system. As a result, the park provides an enjoyable experience of nature and the greatest sensuous variation of form, texture, scent, light & shadow and sound. It is an urban boulevard with diverse flowering trees, solitary shade trees and some exotic exceptions.

i) Trees - The Cultural Boulevard has a variety of shady and ornamental trees. Inter-planting of diverse trees forms a natural barrier, providing a sense of enclosure to soften the large building at the southern edges of the site. Native structural trees are selected. *Ficus microcarpa* and *Ficus virens* are the dominant canopy species chosen for their wide spreading crown and dense foliage upon maturity. These trees are common urban species in Hong Kong and play an important role in urban greening.

ii) Lawns - Refer to Section 3.3.3.

iii) Shrub (for reference only) - Shrubs species, including *Camellia japonica*, *Rhododendron simsii* (purple), *Lantana montevidensis* and *Ixora chinensis* are the dominant species along the pedestrian footpath. Those are rapid and vigorous species which thrive well in extreme conditions. Flower beds and ground cover areas create a strong sensation of seasonality, colors and textures.

iv) See Appendix A for Tree Planting Plans, and Appendix B for Tree Planting Schedule.



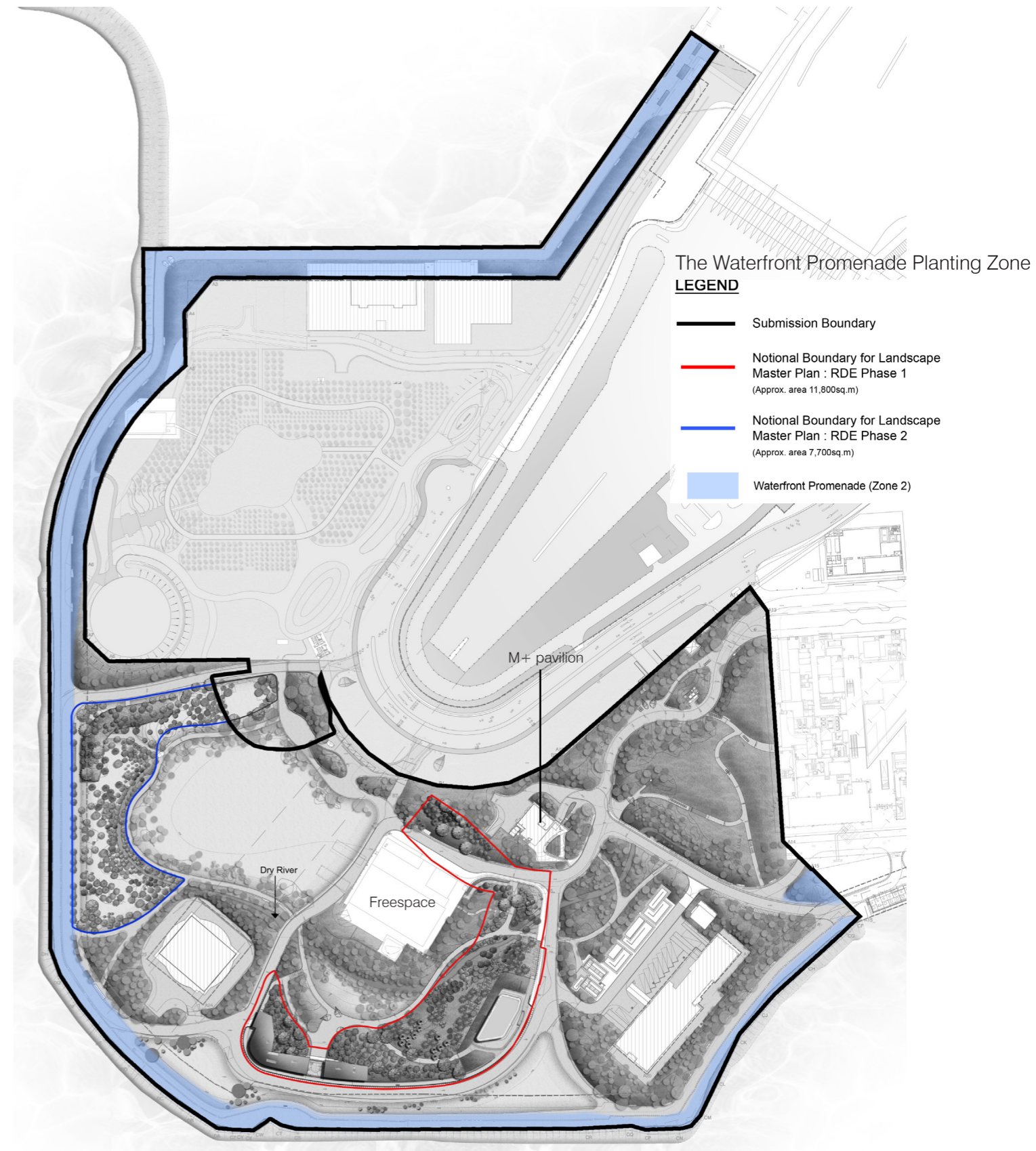
3.3.2 The Waterfront Promenade

The Water Promenade runs along the outer water edge and connects to Waterfront Promenade Lawn on the southern side. It is a continuous waterfront promenade designed in accordance with the original planning intention. A number of pathways physically and visually connect the heart of the park with the promenade.

i) Trees - Feature trees with structural form are planted at regular intervals at the entry points of the Water Promenade. Species proposed for this zone comprise a number of salt tolerant *Ficus microcarpa* and *Ficus virens*. This planting choice also echoes structural tree planting of the Cultural Boulevard.

ii) Lawns - Refer to Section 3.3.3.

iii) See Appendix A for Tree Planting Plans, and Appendix B for Tree Planting Schedule.



3.3.3 Lawns

Lawns of different sizes are designated within the Park as leisure green open spaces and potential event venues. Lawns include the Main Lawn, Waterfront Promenade Lawn, Western Lawn, Small Lawn, North Lawn, North Freespace Small Lawn, East Freespace Small Lawn, M+ Sloping lawn, and RDE Lawn.

i) Tree

In order to create landscape vistas through the lawn areas, trees are vastly planted at the edges of the lawns. Groups of flowering and seasonal trees, such as *Tabebuia chrysantha*, *Tabebuia pentaphylla* and *Liquidambar formosana*, are selected for their visual interest. *Tabebuia* is chosen as it is a spectacular, moderate sized blooming tree. Root system is not aggressive and it grows well in confined areas.

Wodyetia bifurcata of various heights are proposed strategically on the Waterfront Promenade Lawn to allow sufficient space for flexible event uses. Several *Pongamia pinnata* and *Melia azedarach* are proposed as shade trees. The palms create an urban atmosphere and cast light shadow in contrast with the denser areas of the Park and allow light to penetrate the lawn below.

ii) Lawn / Grass

Three types of lawn species are chosen for their performances under anticipated lawn uses referring to expert advice of Dr. Eric Lee (Turf Specialist within the design team).

Main Lawn is the largest lawn designed with the capacity to host festival and public events. Large crowds of over 10,000 people may gather during an event. Hybrid Bermudagrass - Tifton 419 (*Cynodon dactylon x C. transvaarensis cv. Tifway*) is selected due to its high and fast recuperation rate, resistance to diseases, deep root system and ability to cope with relatively high wear and tear. Ornamental grasses, herbaceous and mix of native flowering shrubs are planted on the periphery of Main Lawn to hint the character of open grass vegetation of Hong Kong.

Waterfront Promenade Lawn is more flexibly designed for accommodating different stalls and events set ups. Seashore Paspalum (*Paspalum vaginatum*) is proposed as the area is exposed to sea-laden winds and salt spray. This species is tolerant to sea-side environments.

Western Lawn, Small Lawn, North Lawn and **M+ Sloping Lawn** also allow various leisure and event opportunities of smaller scales. Korean Grass (*Zoysia japonica*) is selected as some of these areas are beneath semi-shaded tree canopies. This species is relatively tolerant to shade than

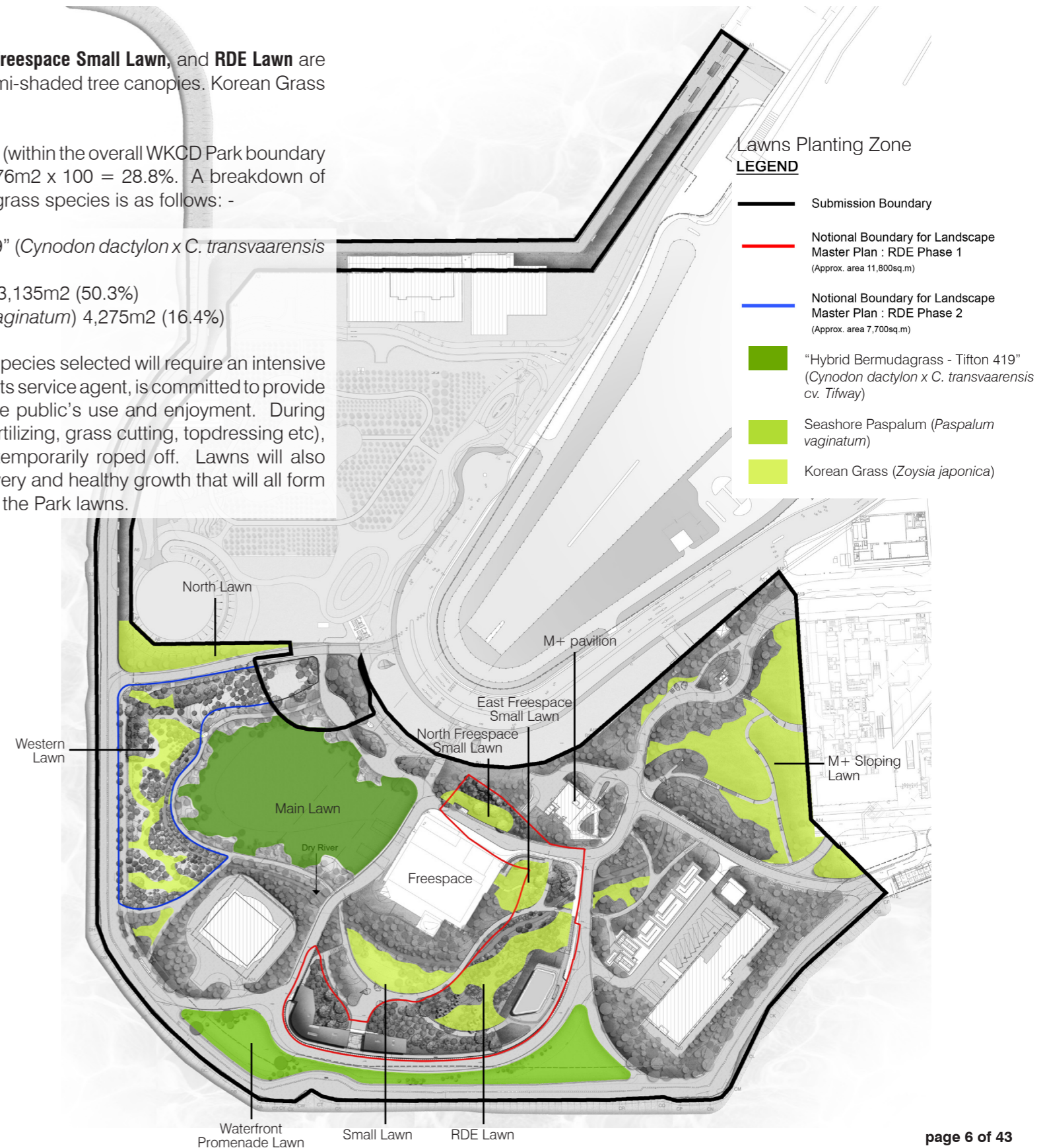
other grass species. It has high wear and tear tolerance towards medium pedestrian traffic.

North Freespace Small Lawn, East Freespace Small Lawn, and RDE Lawn are relatively small and also under semi-shaded tree canopies. Korean Grass (*Zoysia japonica*) is also used.

The percentage of grass coverage (within the overall WKCD Park boundary of 90,576m²) is 26,100m² / 90,576m² x 100 = 28.8%. A breakdown of total grass coverage by different grass species is as follows: -

- “Hybrid Bermudagrass - Tifton 419” (*Cynodon dactylon x C. transvaarensis cv. Tifway*) 8,690m² (33.3%)
- Korean Grass (*Zoysia japonica*) 13,135m² (50.3%)
- Seashore Paspalum (*Paspalum vaginatum*) 4,275m² (16.4%)

All lawn areas, irrespective of the species selected will require an intensive maintenance regime. WKCD, or its service agent, is committed to provide regular upkeep of all lawns for the public’s use and enjoyment. During regular maintenance (weeding, fertilizing, grass cutting, topdressing etc), lawns will be sectioned off and temporarily roped off. Lawns will also require “resting periods” for recovery and healthy growth that will all form part of the “normal” operations of the Park lawns.



3.3.4 Woodland Planting

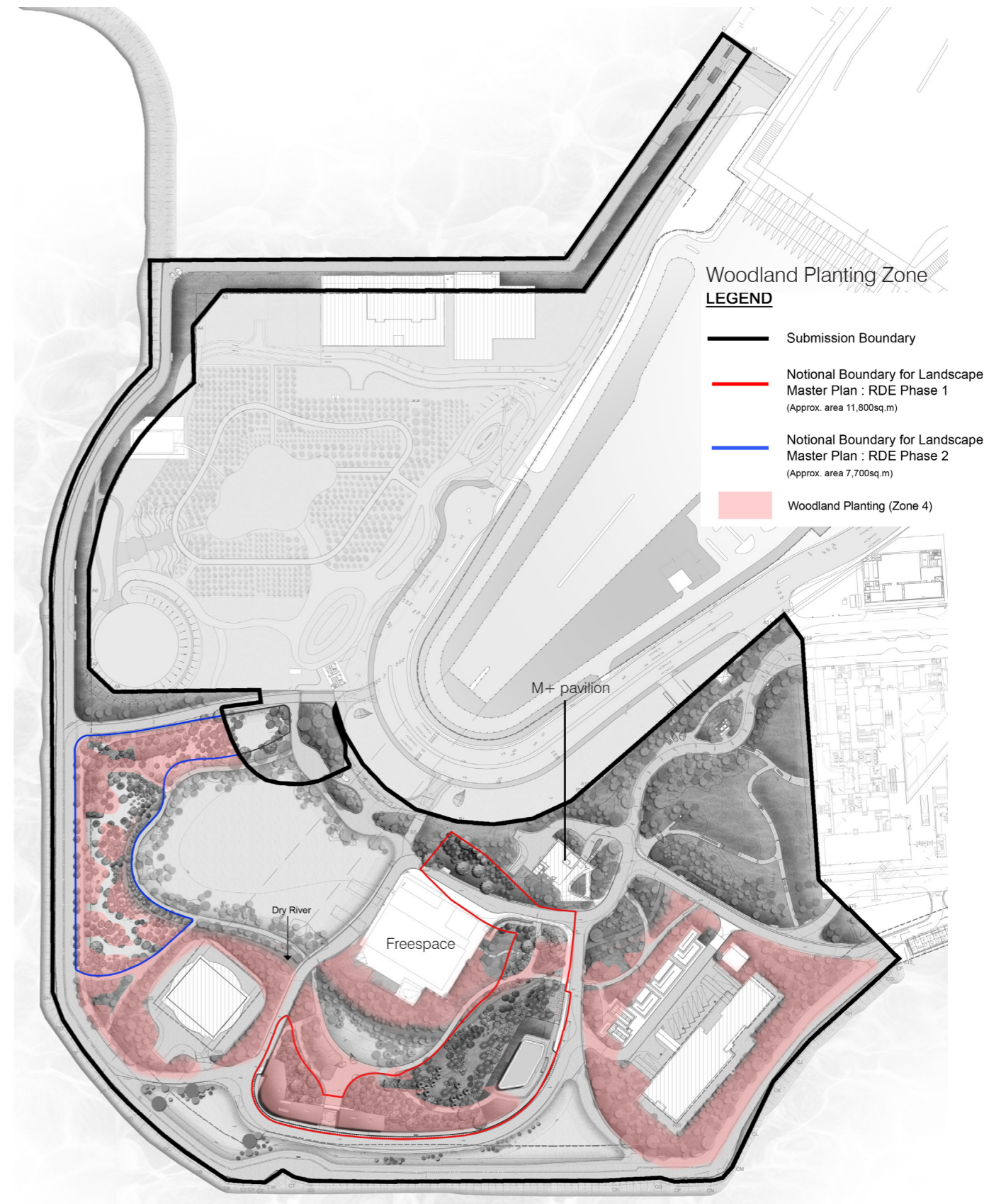
Woodland planting is located in shaded areas of the Park. Rich subtropical plants with colored, large leaves and flower as well as diverse textures dominate this zone. They reflect the character of lush, humid and subtropical valleys with natural and serene ambience. The term “woodland planting” is to describe the “character” and “ambience”, and is not literal or used as arboricultural terminology.

i) Tree - This area is characterized by a mix of umbrella-shaped trees with large leaves, which create a high degree of shade. Species proposed include *Cinnamomum camphora*, *Ficus virens*, *Pterocarpus indicus*, *Sapindus sapanoria* and *Terminalia catappa*. These provide a lush subtropical atmosphere

ii) Shrub (for reference only) - Shrubs and groundcovers are mixed to create heterogeneous textures. Shrub planting mainly comprises *Fagraea ceilanica*, *Rhapis humilis*, *Livistona chinesnsis* and *Musa acuminata*.

iii) Lawns - Refer to Section 3.3.3.

iv) See Appendix A for Tree Planting Plans, and Appendix B for Tree Planting Schedule.



3.3.5 Dry River

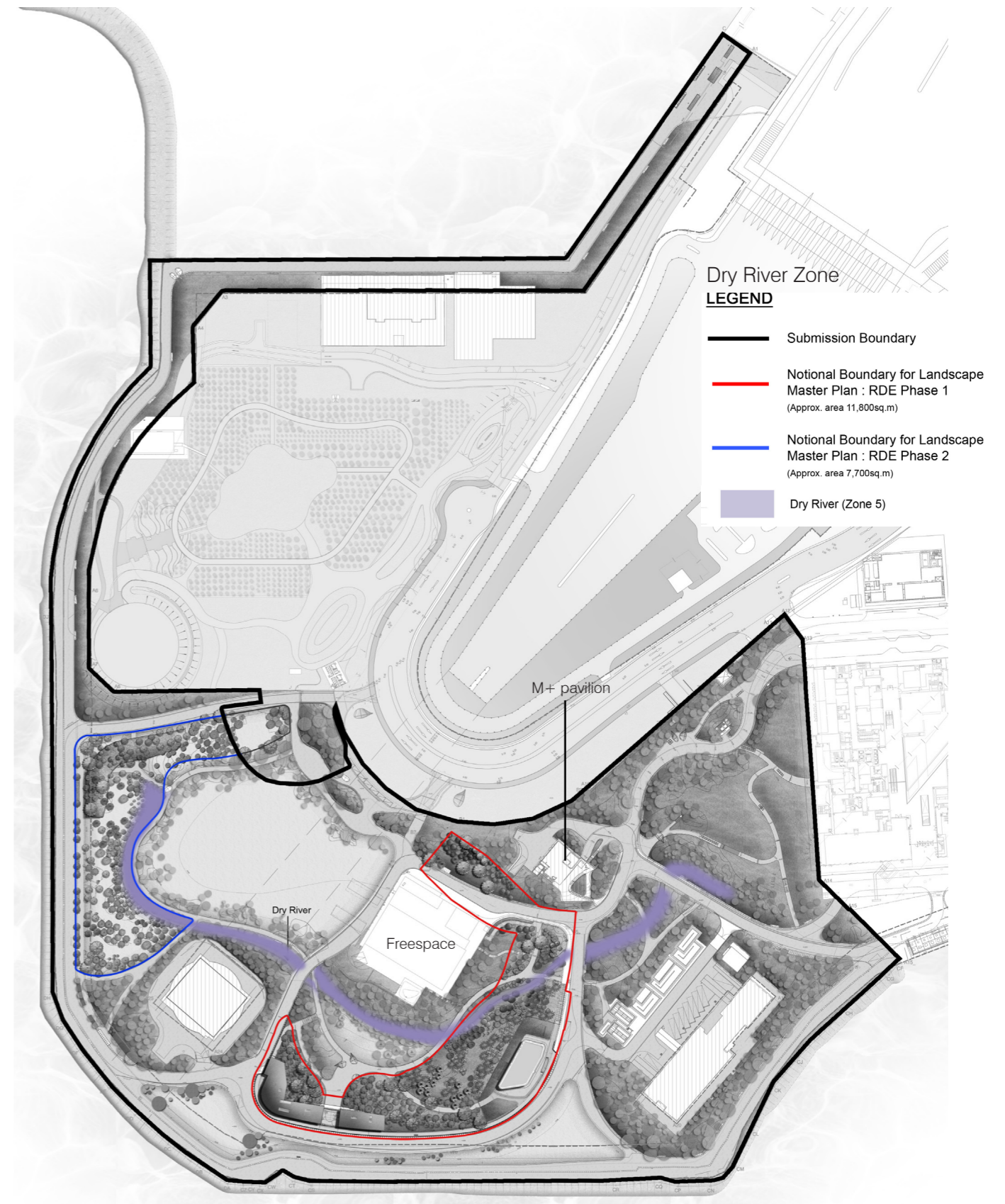
Dry river comprises river bedding rocks of various sizes. It mimicks natural landscape feature and creates an iconic space. In moments of heavy rain, water flows naturally along the Dry River to drainage outlets.

i) Tree - Canopy trees are planted along the Dry River to create an intimate space in the river landscape. Species includes *Ficus variegata*, *Cinnamomum camphora*, *Celtis sinensis* and *Dracaena draco*.

ii) Shrub (for reference only) - Dry River vegetation contains shrubs species of different calibers and heights, which include *Iris tectorum* ssp. (Light Blue), *Iris tectorum* ssp. (Blue), *Iris tectorum* ssp. (Light Purple) and *Iris tectorum* ssp. (purple).

iii) Lawns - Refer to Section 3.3.3.

iv) See Appendix A for Tree Planting Plans, and Appendix B for Tree Planting Schedule.



3.3.6 Cypress Forest

Cypress Forest is densely planted with trees of contrasting textures and trees with autumn colours. It is an intimate space in sloped areas. The term “forest” is to describe the “character” and “ambience”, and is not literal or used as arboricultural terminology. The sense of “forest” is created by groups of (for instance 25 no.s) trees of the same genus and species, which form a strong impression in urban setting.

i) Tree - Taxodium distichum is the dominate tree in this zone. Although Taxodium distichum naturally occurs in swappy conditions, it is placed on the north facing downslope behind the RDE 1-3 building in order to create an ambience of cypress forest.

ii) Lawns - Refer to Section 3.3.3.

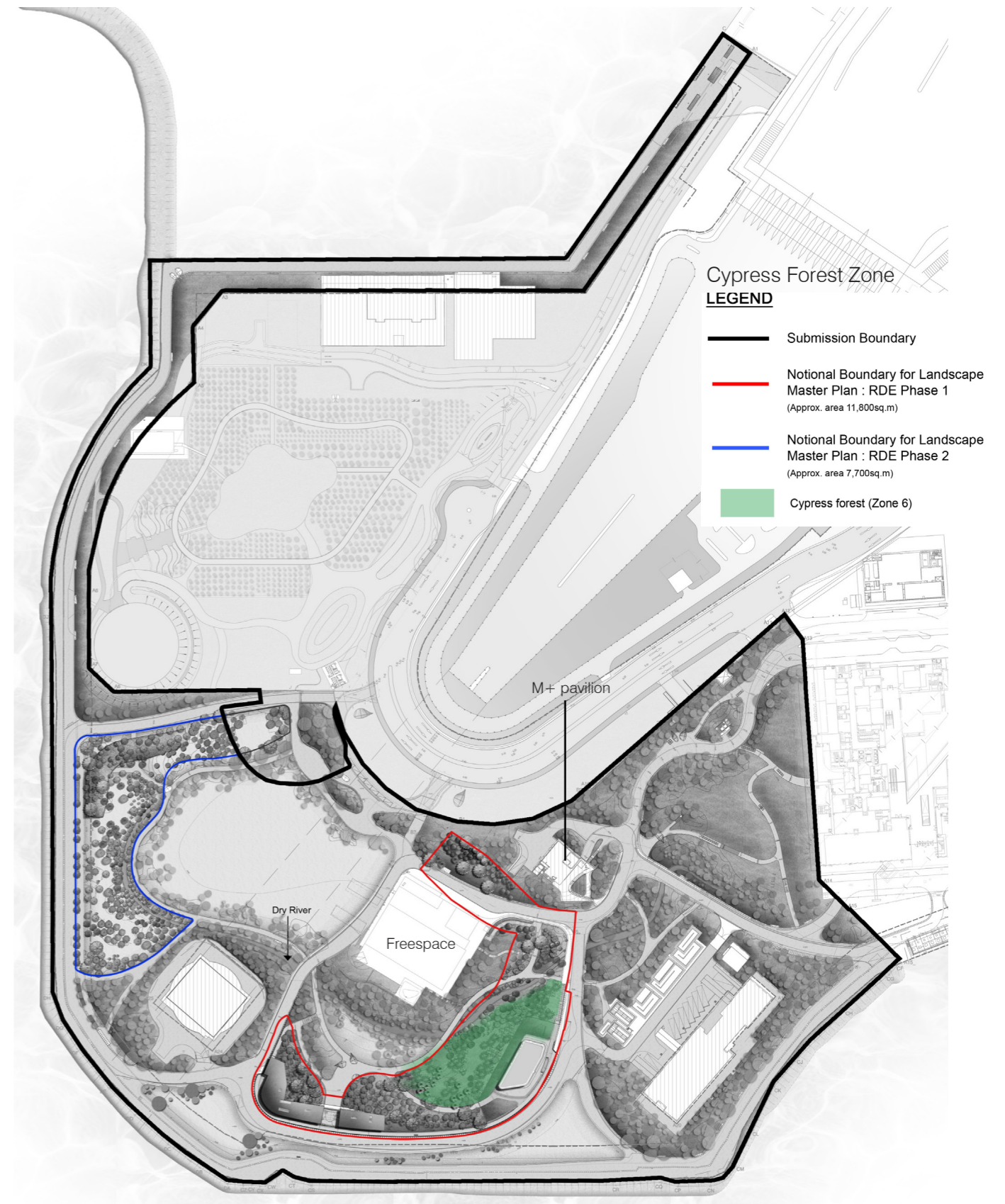
iii) See Appendix A for Tree Planting Plans, and Appendix B for Tree Planting Schedule.

3.4 Conclusion

The percentage of grass coverage within the overall WKCD Park boundary 28.8%

A total of 118 different tree species are proposed. 1124 no.s of tree are “Native”, 564 no.s of tree are “Domesticated” and 668 no.s of tree are “Exotic.

71.65 % of the trees are local species or domesticated species.



TREE AND TURF GRASS PLANTING AND LANDSCAPE DESIGN

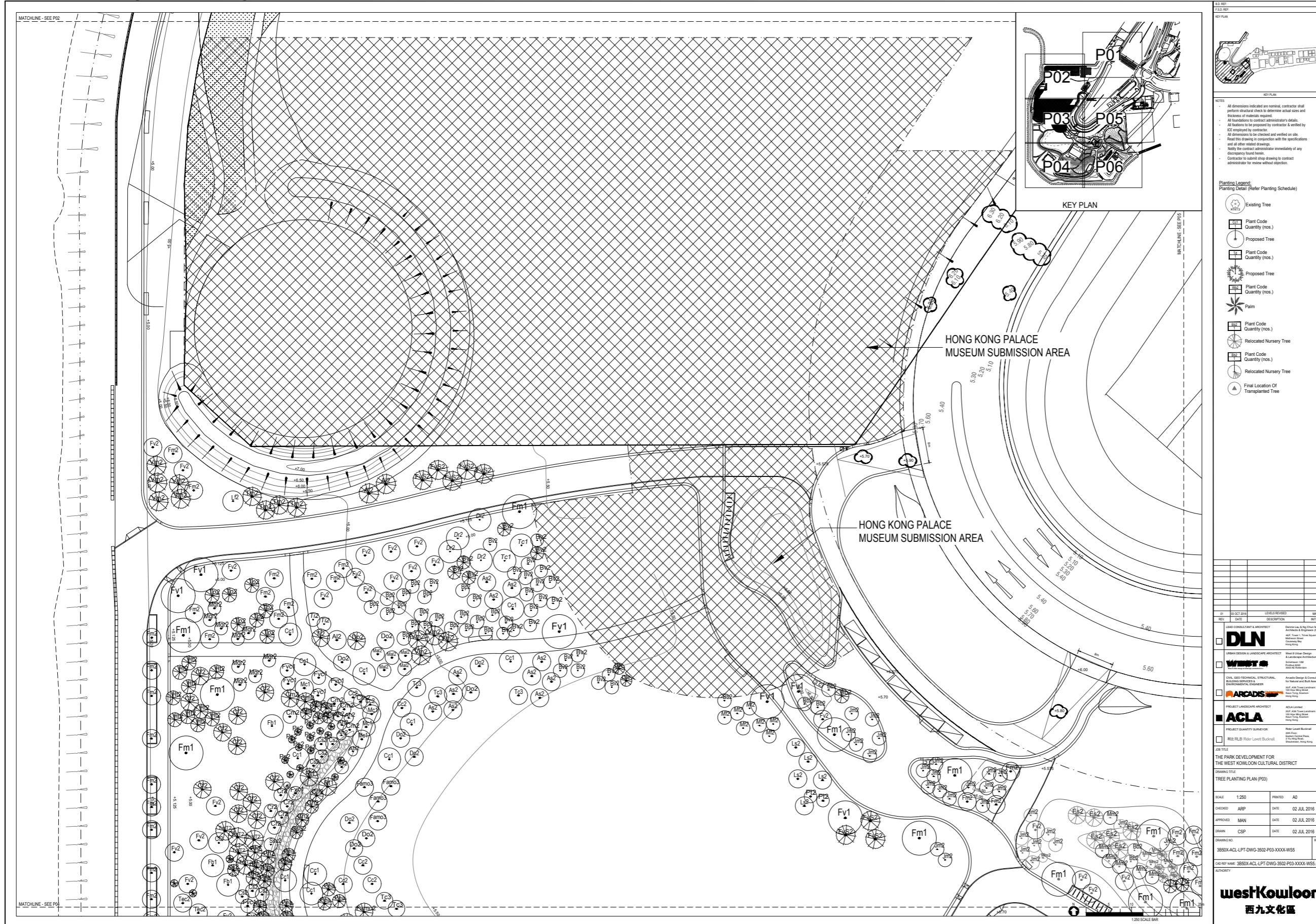
4. APPENDICES

APPENDIX A	TREE PLANTING PLANS
APPENDIX B	TREE PLANTING SCHEDULE
APPENDIX C	POST-PLANTING CARE PLAN
APPENDIX D	TREE PRUNING SCHEDULE
APPENDIX E	CONCEPTUAL LANDSCAPE PROPOSAL (For Reference Only)

APPENDIX A - TREE PLANTING PLANS

Design Consultancy
for the Park Development
for West Kowloon Cultural District
Submission of Tree and Turf Grass Planting and Landscape Plans

Tree Planting Plan (Page 3 of 6)



KEY PLAN

NOTES:

- All dimensions indicated are nominal, contractor shall perform structural check to determine actual sizes and thickness of material required.
- All foundations to be prepared by contractor & verified by ICE employed by contractor.
- All dimensions to be checked and verified on site.
- Read this drawing in conjunction with the specifications and all other related drawings.
- Notify the contract administrator immediately of any discrepancy found herein.
- Contractor to submit shop drawing to contract administrator for review without objection.

Planting Legend:
Planting Detail (Refer Planting Schedule)

- Existing Tree
- Plant Code
Quantity (nos.)
- Proposed Tree
- Plant Code
Quantity (nos.)
- Proposed Tree
- Plant Code
Quantity (nos.)
- Palm
- Plant Code
Quantity (nos.)
- Relocated Nursery Tree
- Plant Code
Quantity (nos.)
- Relocated Nursery Tree
- Final Location Of Transplanted Tree

NO.	DATE	LEVEL	REVISION	DESCRIPTION	INITIAL
01	10 OCT 2015	01	ISSUED FOR TENDER		

LANDSCAPE ARCHITECT: DLN
URBAN DESIGN & LANDSCAPE ARCHITECT: WEST8
CIVIL, MECHANICAL, ELECTRICAL, PLUMBING & HEATING ENGINEERING CONSULTANTS: ARCADIS
PROJECT LANDSCAPE ARCHITECT: ACLA

JOB TITLE:
THE PARK DEVELOPMENT FOR THE WEST KOWLOON CULTURAL DISTRICT
DRAWING TITLE:
TREE PLANTING PLAN (P03)

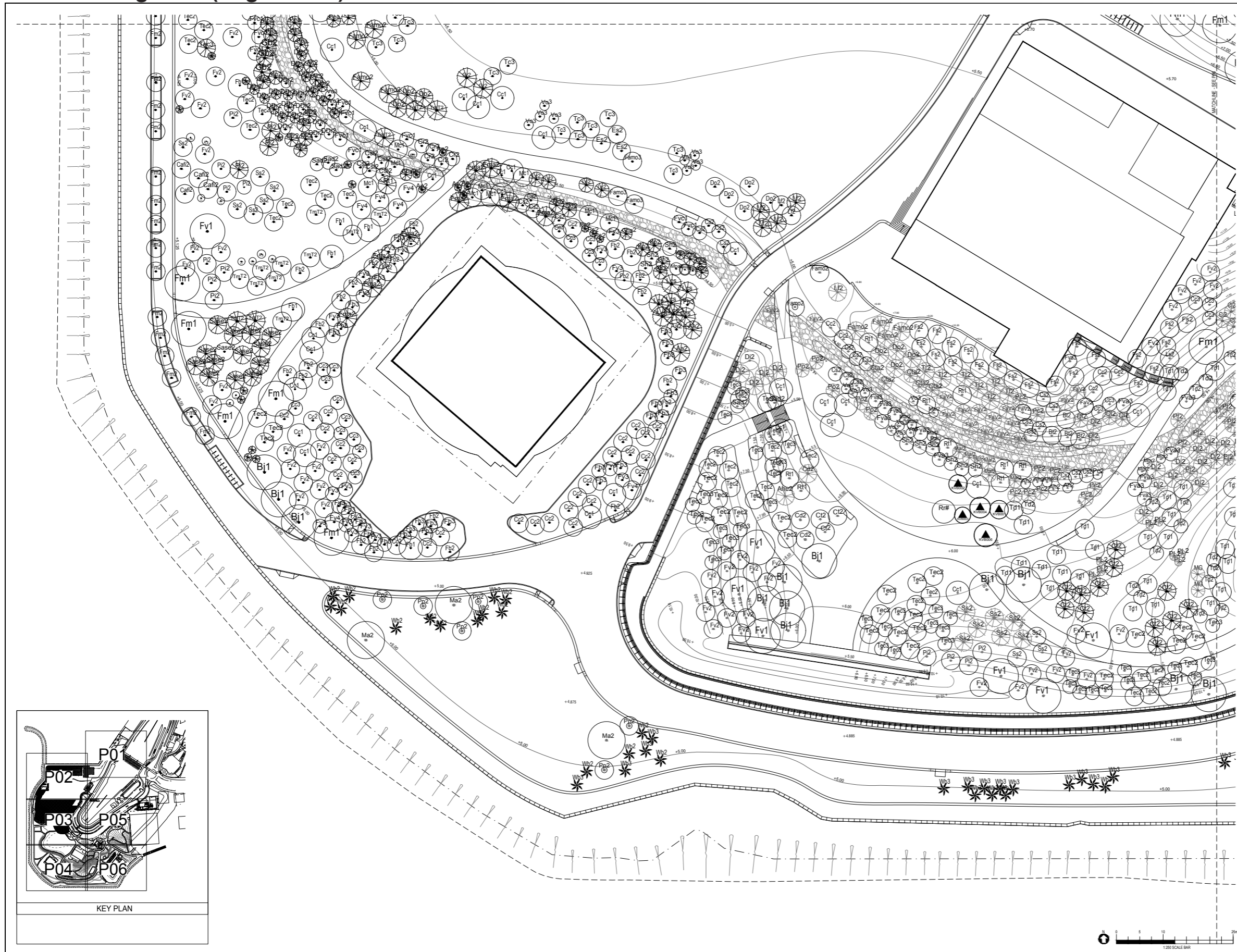
SCALE: 1:250 PRINTED: A0
CHECKED: APP DATE: 02 JUL 2016
APPROVED: MAN DATE: 02 JUL 2016
DRAWN: CSP DATE: 02 JUL 2016

CD REF NAME: 3850X-ACL-LPT-DWG-3502-P03-XXXX-WSS.dwg

westKowloon
西九文化區

Design Consultancy
for the Park Development
for West Kowloon Cultural District
Submission of Tree and Turf Grass Planting and Landscape Plans

Tree Planting Plan (Page 4 of 6)



KEY PLAN

NOTES

- All dimensions indicated are nominal, contractor shall perform structural check to determine actual sizes and thickness of material required.
- All foundations to be prepared by contractor & verified by GE employed by contractor.
- All dimensions to be checked and verified on site.
- Read this drawing in conjunction with the specifications and all other related drawings.
- Notify the contract administrator immediately of any discrepancy found herein.
- Contractor to submit site drawing to contract administrator for review without objection.

Planting Legend:
Planting Detail (Refer Planting Schedule)

- Existing Tree
- Plant Code
- Quantity (nos.)
- Proposed Tree
- Plant Code
- Quantity (nos.)
- Proposed Tree
- Plant Code
- Quantity (nos.)
- Palm
- Plant Code
- Quantity (nos.)
- Relocated Nursery Tree
- Plant Code
- Quantity (nos.)
- Relocated Nursery Tree
- Final Location Of Transplanted Tree

REV.	DATE	DESCRIPTION	INITIAL

LAND CONSULTANT & ARCHITECT
DLN
Dennis Lee & Ng Chee Hin
Architects & Engineers P15 Ltd
10/F, Tower 1, Trade Square
238 Queen's Road East
Hong Kong

URBAN DESIGN & LANDSCAPE ARCHITECT
WEST8
West8 Urban Design & Landscape Architecture B.V.
Rijksweg 100
3720 XG Dordrecht
The Netherlands

CIVIL, MECHANICAL, ELECTRICAL, PLUMBING SERVICES & ENVIRONMENTAL CONSULTANTS
ARCADIS
Arcadis Design & Consulting
for Natural and Built Assets
10/F, Asia Trade Centre East
100 Queen's Road East
Hong Kong

PROJECT LANDSCAPE ARCHITECT
ACLA
ACLA Landscape
10/F, Trade Square East
100 Queen's Road East
Hong Kong

PROJECT QUANTITY SURVEYOR
RIS PLS
RIS PLS (Pilot Level) Building
2/F, 100 Queen's Road East
Hong Kong

JOB TITLE
THE PARK DEVELOPMENT FOR
THE WEST KOWLOON CULTURAL DISTRICT
SUBMISSION OF
TREE PLANTING PLAN (P04)

SCALE 1:250 **PRINTED** A0

CHECKED APP **DATE** 02 JUL 2016

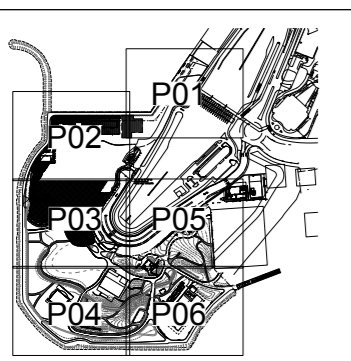
APPROVED MAN **DATE** 02 JUL 2016

DRAWN CSP **DATE** 02 JUL 2016

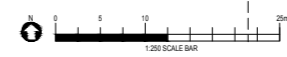
DRAWING NO. 3850X-ACL-LPT-DWG-3503-P04-XXXX-WSS **REV.** 00

FILE NAME 3850X-ACL-LPT-DWG-3503-P04-XXXX-WSS.dwg

westKowloon
西九文化區



KEY PLAN



Design Consultancy
for the Park Development
for West Kowloon Cultural District
Submission of Tree and Turf Grass Planting and Landscape Plans

Tree Planting Plan (Page 5 of 6)



KEY PLAN

NOTES:

- All dimensions indicated are nominal, contractor shall perform structural check to determine actual sizes and thickness of material required.
- All foundations to be prepared by contractor & verified by ICE employed by contractor.
- All dimensions to be checked and verified on site.
- Read this drawing in conjunction with the specifications and all other related drawings.
- Notify the contract administrator immediately of any discrepancy found herein.
- Contractor to submit site drawing to contract administrator for review without objection.

Planting Legend:
Planting Detail (Refer Planting Schedule)

- Existing Tree
- Plant Code
Quantity (nos.)
- Proposed Tree
- Plant Code
Quantity (nos.)
- Proposed Tree
- Plant Code
Quantity (nos.)
- Palm
- Plant Code
Quantity (nos.)
- Relocated Nursery Tree
- Plant Code
Quantity (nos.)
- Relocated Nursery Tree
- Final Location Of Transplanted Tree

NO.	DATE	LEVEL	REVISION	INITIAL
01	10 OCT 2015			
REV	DATE	DESCRIPTION		

LAND CONSULTANT & ARCHITECT
DLN
Dennis Lee & Ng Chee Man
Architects & Engineers P15 Ltd
1001, Tower 1, Trade Square
Chim San Road
Hong Kong

URBAN DESIGN & LANDSCAPE ARCHITECT
WEST8
West 8 Urban Design
& Landscape Architecture B.V.
Rijnhuizen 100
3512 CR Utrecht
The Netherlands

CIVIL, MECH, ELECTRICAL, STRUCTURAL,
ENVIRONMENTAL, PLANNING
ARCADIS
Arcadis Design & Consulting
for Natural and Built Environments
100, 101, 102, 103, 104, 105
The Arcade
London EC2A 4PU
United Kingdom

PROJECT LANDSCAPE ARCHITECT
ACLA
ACLA Landscape
1001, Tower 1, Trade Square
Chim San Road
Hong Kong

PROJECT QUANTITY SURVEYOR
RIS PLS PLS
RIS PLS PLS
RIS PLS PLS
RIS PLS PLS

JOB TITLE
THE PARK DEVELOPMENT FOR
THE WEST KOWLOON CULTURAL DISTRICT
DRAWING TITLE
TREE PLANTING PLAN (P05)

SCALE: 1:250 PRINTED: A0
CHECKED: APP DATE: 02 JUL 2016
APPROVED: MAN DATE: 02 JUL 2016
DRAWN: CSP DATE: 02 JUL 2016

DRAWING NO: 385DX-ACL-LPT-DWG-3504-P05-XXXX-W55 01
CADD REF NAME: 385DX-ACL-LPT-DWG-3504-P05-XXXX-W55.dwg
AUTHORITY

westKowloon
西九文化區

MATCHLINE - SEE P06
1:250 SCALE BAR

Design Consultancy
for the Park Development
for West Kowloon Cultural District
Submission of Tree and Turf Grass Planting and Landscape Plans

Tree Schedule (Page 1 of 2)

APPENDIX B - TREE PLANTING SCHEDULE

Tree Planting Schedule (Page 1 of 3)

		Tree code	Botanical name	Chinese name	Height (mm)	Spread (mm)	DBH	Total
Canopy Trees								
Native	Heavy standard	Fv1	<i>Ficus virens</i>	大葉榕	4500	2500	80	40
Native	Standard	Fv2	<i>Ficus virens</i>	大葉榕	3500	1500	60	126
Native	Heavy standard	Fm1	<i>Ficus microcarpa</i>	細葉榕	4500	2500	80	40
Native	Standard	Fm2	<i>Ficus microcarpa</i>	細葉榕	3500	1500	60	129
Flowering Trees								
Exotic	Heavy standard	Aa2	<i>Artocarpus altilis</i>	麵包樹	4500	2000	120	3
Native	Heavy standard	Ahe2	<i>Artocarpus heterophyllus</i>	菠蘿蜜	2500	1200	80	6
Native	Heavy standard	Bb2	<i>Bauhinia x blakeana</i>	洋紫荊	4000	2000	80	24
Domesticated	Heavy standard	Bp2	<i>Bauhinia purpurea</i>	紅花羊蹄甲	4000	2000	80	60
Domesticated	Heavy standard	Bv2	<i>Bauhinia variegata</i>	宮粉羊蹄甲	4000	2000	80	42
Domesticated	Heavy standard	Bvc2	<i>Bauhinia variegata var. candida</i>	白花洋紫荊	4000	2000	80	11
Exotic	Heavy standard	Bo3	<i>Bixa orellana</i>	紅木	3000	1500	80	2
Domesticated	Heavy standard	Bc1	<i>Bombax ceiba</i>	木棉	6000	3000	100	1
Exotic	Heavy standard	Ba-1	<i>Brachychiton acerifolius</i>	槭葉蘋婆	4500	2500	100	14
Domesticated	Heavy standard	Dr2	<i>Delonix regia</i>	鳳凰木	4000	2500	80	21
Exotic	Heavy standard	Aj2	<i>Albizia julibrissin</i>	合歡	4000	2000	80	15
Native	Heavy standard	Es2	<i>Elaeocarpus sylvestris</i>	山杜英	4000	2500	100	25
Exotic	Heavy standard	Jm2	<i>Jacaranda mimosifolia</i>	藍花楹	4000	2500	80	42
Exotic	Standard	Ls2	<i>Lagerstroemia speciosa</i>	大花紫薇	3500	1500	70	26
Native	Standard	Mf2	<i>Manglietia fordiana</i>	木蓮	2500	1200	50	7
Native	Heavy standard	Mm2	<i>Michelia maudiae</i>	深山含笑	4000	2000	80	21
Native	Standard	Rc2	<i>Rhodoleia championii</i>	紅花荷	2500	1200	50	28
Exotic	Heavy standard	Tc1	<i>Tabebuia chrysantha</i>	風鈴木	6000	3000	100	9
Exotic	Standard	Tc2	<i>Tabebuia chrysantha</i>	風鈴木	4500	2000	50	22
Exotic	Heavy standard	Ti1	<i>Tabebuia impetiginosa</i>	粉紅風鈴木	6000	3000	100	5
Exotic	Heavy standard	Ti2	<i>Tabebuia impetiginosa</i>	粉紅風鈴木	4500	2000	80	32
Exotic	Heavy standard	Tp2	<i>Tabebuia pentaphylla</i>	紅花風鈴木	3500	1500	80	8
Domesticated	Standard	Vm2	<i>Vernicia montana</i>	木油樹	2500	1200	50	19
Exotic	Heavy standard	Xc2	<i>Xanthostemon chrysanthus</i>	金蒲桃	4500	2500	80	15
Palms								
Exotic	Heavy standard	Wb2	<i>Wodyetia bifurcata</i>	狐尾椰子	5000	2000	150	16
Exotic	Semi-mature	Rr#	<i>Roystonea regia</i>	王棕	7000	2500	250	9
Trees for open grass vegetation								
Native	Heavy standard	Am2	<i>Adenanthera microsperma</i>	海紅豆	3000	1500	80	1
Native	Standard	As2	<i>Aquilaria sinensis</i>	牙香樹	3500	1500	60	19
Native	Heavy standard	Cc1	<i>Cinnamomum camphora</i>	樟	6000	3000	100	57
Native	Heavy standard	Cc2	<i>Cinnamomum camphora</i>	樟	3000	1500	80	59
Native	Standard	Cc3	<i>Cinnamomum camphora</i>	樟	2500	1500	50	79
Exotic	Heavy standard	Do2	<i>Dalbergia oliveri</i>	奧氏黃檀	3500	1500	80	27
Domesticated	Heavy standard	Famo2	<i>Falcataria moluccana</i>	南洋楹	6000	3000	150	11
Domesticated	Heavy standard	Famo3	<i>Falcataria moluccana</i>	南洋楹	3000	1500	80	13
Native	Standard	Fv4	<i>Ficus virens</i>	大葉榕	3000	1500	70	27
Native	Standard	Fv3	<i>Ficus virens</i>	大葉榕	2000	1200	50	39
Native	Heavy standard	Lf2	<i>Liquidambar formosana</i>	楓香	4000	2000	100	13

Design Consultancy
for the Park Development
for West Kowloon Cultural District
Submission of Tree and Turf Grass Planting and Landscape Plans

Tree Planting Schedule (Page 2 of 3)

Exotic	Heavy standard	Tt2	<i>Tipuana tipu</i>	大班木	6000	3000	120	15
Exotic	Heavy standard	Tc3	<i>Tabebuia chrysantha</i>	風鈴木	6000	3000	120	17
Domesticated	Heavy standard	Ac2	<i>Averrhoa carambola</i>	楊桃	2500	1200	80	2
Exotic	Heavy standard	Al2	<i>Artocarpus nitidus</i>	桂木	2500	1200	80	1
Native	Standard	Ah2	<i>Artocarpus hypargyreus</i>	白桂木	2000	1200	50	10
Exotic	Heavy standard	Cd2	<i>Cedrus deodara</i>	雪松	3000	2000	80	9
Native	Heavy standard	Cs2	<i>Celtis sinensis</i>	朴樹	3500	1800	80	52
Exotic	Heavy standard	Cta2	<i>Chukrasia tabularis</i>	麻棟	4500	2500	100	5
Domesticated	Heavy standard	Cl2	<i>Clausena lansium</i>	黃皮	3000	1500	80	3
Native	Heavy standard	Cn2	<i>Cleistocalyx operculatus</i>	水翁	6000	3000	100	3
Exotic	Heavy standard	Di2	<i>Dillenia indica</i>	第倫桃	5000	3000	120	16
Domesticated	Heavy standard	DI2	<i>Dimocarpus longan</i>	龍眼	3500	1500	80	5
Domesticated	Heavy standard	Dd2	<i>Dracontomelon duperreanum</i>	人面子	3500	1800	80	2
Exotic	Standard	Dli2	<i>Drypetes littoralis</i>	鐵色	1500	1500	60	5
Exotic	Standard	Ir1	<i>Ilex rotunda</i>	鐵冬青	1500	1500	60	6
Exotic	Standard	Ej2	<i>Eriobotrya japonica</i>	枇杷	3500	2000	60	5
Domesticated	Heavy standard	Fav2	<i>Ficus altissima 'Variegata'</i>	斑葉高山榕	4500	3000	80	17
Domesticated	Standard	FbS2	<i>Ficus benjamina 'Starlight'</i>	星光榕	2500	1500	60	10
Native	Standard	Fvc1	<i>Ficus variegata</i>	青果榕	1500	1200	50	50
Exotic	Standard	Gb2	<i>Ginkgo biloba</i>	銀杏	3000	1500	50	5
Exotic	Standard	Gba2	<i>Grevillea banksii</i>	紅花銀樺	3000	1500	60	7
Exotic	Heavy standard	Kp2	<i>Kigelia pinnata</i>	吊瓜樹	6000	4000	150	5
Exotic	Heavy standard	Ke2	<i>Koelreuteria elegans subsp. formosana</i>	台灣欒樹	4500	2000	100	10
Domesticated	Heavy standard	Lc2	<i>Litchi chinensis</i>	荔枝	2500	1200	80	4
Native	Heavy standard	Masa2	<i>Macaranga sampsonii</i>	鼎湖血桐	4000	2000	80	3
Exotic	Standard	Mgr2	<i>Magnolia grandiflora</i>	荷花玉蘭	3000	1500	50	16
Native	Heavy standard	Mpa2	<i>Mallotus paniculatus</i>	白楸	4500	2500	80	1
Domesticated	Heavy standard	Mi2	<i>Mangifera indica</i>	芒果	3500	1500	80	5
Exotic	Heavy standard	Mz2	<i>Manilkara zapota</i>	人心果	3500	1500	80	5
Domesticated	Heavy standard	Mal2	<i>Michelia x alba</i>	白蘭	4500	2000	120	15
Exotic	Standard	Pt2	<i>Peltophorum tonkinense</i>	銀珠	3000	1500	60	16
Native	Heavy standard	Ph2	<i>Pterospermum heterophyllum</i>	翻白葉樹	4500	2500	100	4
Exotic	Heavy standard	Po2	<i>Platanus orientalis</i>	法國梧桐	4500	2000	120	1
Domesticated	Heavy standard	Vm1	<i>Vernicia montana</i>	木油樹	3500	2000	80	4
Native	Heavy standard	Pc2	<i>Pyrus calleryana</i>	豆梨	4000	2000	100	2
Native	Standard	Pp2	<i>Pongamia pinnata</i>	水黃皮	3000	1500	70	11
Exotic	Heavy standard	Rh2	<i>Radermachera hainanensis</i>	海南菜豆樹	4500	2000	100	10
Native	Standard	Rt1	<i>Reevesia thyrsoidea</i>	梭羅樹	3500	2500	60	3
Native	Standard	Mc1	<i>Machilus chekiangensis</i>	浙江潤楠	4000	2000	60	46
Exotic	Standard	Sd2	<i>Saraca dives</i>	中國無憂花	3000	1500	60	10
Native	Heavy standard	Sad2	<i>Sapium discolor</i>	山烏柏	4500	2500	100	5
Native	Standard	Ssu2	<i>Schima superba</i>	木荷	3000	1500	60	2
Native	Standard	Sh2	<i>Syzygium hancei</i>	韓氏蒲桃	4500	2500	50	9
Exotic	Standard	TmT2	<i>Terminalia mantaly cv. 'Tricolor'</i>	錦葉欖仁	3000	1500	60	20
Native	Standard	Vo3	<i>Viburnum odoratissimum</i>	珊瑚樹	1500	1200	50	34
Native	Heavy standard	Bj1	<i>Bischofia javanica</i>	秋楓	4500	2500	80	12
Native	Heavy standard	Bt2	<i>Bridelia tomentosa</i>	土蜜樹	4500	2000	100	19
Exotic	Standard	Cf2	<i>Caesalpinia ferrea</i>	巴西鐵木	3500	1500	60	13
Native	Standard	Cafi2	<i>Castanopsis fissa</i>	黧蒴錐	1500	1200	50	4
Domesticated	Standard	Ct2	<i>Crateva trifoliata</i>	鈍葉魚木	3000	2500	50	38

Design Consultancy
for the Park Development
for West Kowloon Cultural District
Submission of Tree and Turf Grass Planting and Landscape Plans

Tree Planting Schedule (Page 3 of 3)

Domesticated	Heavy standard	Fb1	<i>Ficus benjamina</i>	垂葉榕	4500	2500	80	11
Domesticated	Standard	Fb2	<i>Ficus benjamina</i>	垂葉榕	3500	1500	60	40
Domesticated	Standard	Fb3	<i>Ficus benjamina</i>	垂葉榕	1500	1200	50	47
Exotic	Heavy standard	Fma2	<i>Ficus macrophylla</i>	澳洲大葉榕	5000	2500	100	24
Exotic	Standard	PL2	<i>Polyalthia longifolia</i>	長葉暗羅	4500	1000	60	16
Domesticated	Heavy standard	Pi2	<i>Pterocarpus indicus</i>	紫檀	4500	3000	100	20
Domesticated	Standard	Pi3	<i>Pterocarpus indicus</i>	紫檀	2000	1500	75	6
Native	Heavy standard	Ss2	<i>Sapindus saponaria</i>	無患子	4500	2500	80	19
Native	Heavy standard	Sase1	<i>Sapium sebiferum</i>	烏柏	4000	3000	80	3
Native	Standard	Sase2	<i>Sapium sebiferum</i>	烏柏	3000	2500	50	14
Domesticated	Heavy standard	Tec2	<i>Terminalia catappa</i>	欖仁樹	4500	3000	100	55
Domesticated	Standard	Tec3	<i>Terminalia catappa</i>	欖仁樹	3000	1500	60	59
Exotic	Heavy standard	Td1	<i>Taxodium distichum</i>	落羽杉	4500	2000	100	48
Exotic	Standard	Td2	<i>Taxodium distichum</i>	落羽杉	3000	1500	60	35
Native	Heavy standard	A.s.	<i>Alsophila spinulosa</i>	刺砂羅	1500	1200	100	9
Native	Heavy standard	FvS2	<i>Ficus virens</i>	大葉榕	4000	1500	100	4
Exotic	Semi-mature	C.b.	<i>Cycas balansae</i>	寬葉蘇鐵	1500	1000	200	5
Native	Heavy standard	Ht2	<i>Hibiscus tillaceus</i>	黃槿	3500	2000	80	10
Exotic	Standard	DDr2	<i>Dracaena draco</i>	龍血樹	1500	1200	70	22
Native	Heavy standard	Vo2	<i>Viburnum odoratissimum</i>	珊瑚樹	3500	2000	80	16
Exotic	Standard	C.m.	<i>Ceratozamia mexicana</i>	墨西哥蘇鐵	1500	1000	70	10
Exotic	Standard	Ap2	<i>Acer palmatum</i>	雞爪槭	3000	1500	60	7
Exotic	Standard	Ps2	<i>Photinia serratifolia</i>	石楠	2500	1500	60	10
Exotic	Standard	Pf2	<i>Photinia fraseri</i>	紅葉石楠	2500	1500	60	8
Exotic	Standard	Cj2	<i>Camellia japonica</i>	山茶	2000	1500	50	5
Native	Light standard	Sl2	<i>Sterculia lanceolata</i>	假蘋婆	4500	2500	40	9
Native	Heavy standard	Tpo2	<i>Thespesia populnea</i>	紅葉黃槿	4000	2000	80	9
Exotic	Heavy standard	Tm2	<i>Terminalia mantaly</i>	小葉欖仁	4500	3000	100	10
Exotic	Heavy standard	Pg2	<i>Psidium guajava</i>	番石榴	3000	1500	80	5
Domesticated	Standard	Cr2	<i>Citrus reticulata</i>	柑橘	2500	1500	50	10
Domesticated	Standard	Csi2	<i>Citrus sinensis</i>	橙	2500	1500	50	5
Domesticated	Standard	Cm2	<i>Citrus maxima</i>	柚	2500	1500	50	7
Exotic	Standard	Ma2	<i>Melia azedarach</i>	苦楝	4000	2000	70	3
Exotic	Standard	Dw	<i>Dombeya wallichii</i>	吊芙蓉	2000	2000	70	4
Exotic	Heavy standard	Lcs	<i>Lophostemon confertus</i>	紅膠木	4000	2000	85	7
Native	Heavy standard	Pea	<i>Phyllanthus emblica</i>	餘甘子	20000	1500	80	11
Exotic	Semi-mature	Gr2	<i>Grevillea robusta</i>	銀樺	70000	2000	160	2
Exotic	Light Standard	Sjp	<i>Sophora japonica 'Pendula'</i>	龍爪槐	1500	800	30	3
Exotic	Heavy standard	Mg	<i>Metasequoia glyptostroboides</i>	水杉	5000	2000	100	2
Native	Standard	Pts	<i>Pandanus tectorius</i>	露兜樹	2500	1500	50	10
Domesticated	Standard	Syj	<i>Syzygium jambos</i>	蒲桃	3000	1500	50	21

TOTAL 2356

Tree Type

Native	1124	47.71%	71.65%
Domesticated	564	23.94%	
Exotic	668	28.35%	28.35%

Light Standard	12	0.51%
Standard	1180	50.08%
Heavy standard	1148	48.73%
Semi-mature	16	0.68%

APPENDIX C – POST-PLANTING CARE PLAN

Post Planting Care

A INTRODUCTION

1. Background

This document sets out the requirements and the frequencies of inspections and maintenance of the landscape softworks within the West Kowloon Cultural District Park.

2. Maintenance Authorities for Completed Soft Landscape Works

WKCDA, or its service agent, will be the maintenance authorities for completed soft landscape works for the WKCD Park.

B. LANDSCAPE SOFTWORKS MAINTENANCE OPERATIONS FOR GENERAL LANDSCAPE AREA

Refer to tables in the following pages.

Specific Requirements

- (a) General inspections – focus on whether tree has any health problem, structural issue, vandalism or is obstructing any pedestrian or vehicular accessibility and/or sightlines, especially EVA clearance requirements.
- (b) Canopy Tree Pruning – prune as required. Remove dead, dying and unhealthy shoots. Prune for healthy growth and to avoid conflict with pedestrian or vehicular accessibility and/or sightlines, especially EVA clearance requirements, above ground utilities and CCTV visibility requirements. For the first three years after planting, maximum 25% crown reduction should be undertaken every year in order to reduce wind loading in advance of the typhoon season. Crown pruning of maximum 20% at the time of planting is recommended.
- (c) Canopy Tree Pruning - Proper crown lifting and selective pruning is required for trees adjacent to EVAs, until the lowest branch height exceeds 5.5 metres. Prune for healthy growth and to avoid conflict of sightlines, vehicles and above ground facilities.
- (d) Canopy Tree crown thinning to be in accordance with TMO/DevB's guidelines.
- (e) Canopy Tree crown cleaning to be in accordance with TMO/DevB's guidelines.
- (f) Palm Tree Pruning - Removal of palm fronds – remove as required. Remove dead, dying and unhealthy fronds and fruiting bodies for healthy growth and to avoid conflict of sightlines and above ground facilities.
- (g) Pruning of small trees, palms and conifers and pruning of shrubs and ground covers - avoid carrying out pruning of shrubs and ground covers while they are developing flower bearing shoots or they are in full flower, unless the shrubs or ground covers are causing or are likely to cause obstruction to pedestrians or vehicles or sightlines.
- (h) Where specified, hedges and conifers (e.g. *Podocarpus macrophyllus* 羅漢松) – to be hand pruned. Do not use electrical trimmers or chain saws.
- (i) Where specified, hedges (e.g. *Duranta repens* 蓮翹) to be clipped to maintain neat and tidy appearance.
- (j) Pruning of shrubs and ground covers around root collars of trees to be in accordance with TMO/DevB's guidelines.
- (k) Check for pests / fungi – apply pesticides or fungicides as required.
- (l) Watering – Hand watering by hose unless irrigation system is available within the planting areas. Do not use high pressure water jet. Do not spray on footpaths and roads. Fresh water or shall be used for watering landscape softworks. Water shall be applied using a hose in such a manner to avoid compaction or washout of soil or loosening of plants. Any damage caused shall be made good immediately. All planted areas shall be watered to ensure healthy growth of the plants.
- (m) Weeding – all planted and/or grassed areas including tree pits shall be kept free of weeds and any parasitic plants, such as *Pueraria*, *Cuscuta*, *Cassytha* and *Mikania*. Species of noxious and invasive weeds, as defined by Agriculture, Fisheries and Conservation Department (AFCD), such as *Mikania micrantha*, shall be cleared manually from all affected areas and disposed of, all in accordance with the guidelines and practice notes promulgated by AFCD. Use of chemical or fire for weeding shall not be allowed. Any ground cover plants, herbaceous plants, climbers, mulch or soil disturbed or removed during the weeding operation shall be made good. Planted / grassed areas and tree pits shall be weeded to remove all unwanted vegetative growth including aerial parts and roots, over the complete area. Weeding shall be carried out by hand avoiding damage to the planted areas.
- (n) Fertilizer is not required unless a nutrient deficiency is recorded.
- (o) Bark mulching at tree root collar – ensure that bark mulch, where specified, is located around the root collar.
- (p) Above ground cable guying maintenance – Above ground guying should have been removed by the end of the Establishment Period except for trees replaced during the Establishment Period. In these cases, check if cables are adversely affecting tree bark or restricting tree trunk or branch development, loosen or re-adjust or remove cables as necessary, loosen cables before typhoon seasons, and replace broken, damaged and other unsatisfactory ties, guys and cables.
- (q) Bamboo stakes maintenance – All open-ended hollow sections of bamboo stakes should be sealed to prevent accumulation of standing water and consequent mosquito nuisance. Broken, damaged or unsatisfactory tree stabilisation ties and bamboo posts shall be replaced and ties that are causing chafing or abrasion of the plant shall be relocated or adjusted. Bamboo posts shall be adjusted as necessary to ensure they are taut and fully functional. Firming up of the trees and tree stakes shall be undertaken from time to time during the period for Establishment Works and particularly after heavy rain and/or wind.
- (r) Above ground cable guying and bamboo stakes removal – Above ground cable guying or bamboo staking should be removed at the end of the period for establishment works or when instructed by the Engineer, unless otherwise instructed. Removal should be after October 1, after the typhoon and rainy season. Do not remove above ground cable guying and bamboo stakes between April 1 and September 30. Proper crown lifting and selective pruning to avoid conflict of sightlines and above ground utilities, and to reduce crown wind loading should be carried out at the time of removal.
- (s) Any visible underground guying strays should be cut by the end of the Establishment Period. No excavating or damage to tree roots is permitted.

1. Post Planting Care Schedule - General Landscape Areas During the Establishment Period

During the Establishment Period, carry out the operations as scheduled below as applicable to Soft Landscaping Works in accordance with this Manual:

Table 1: Maintenance Operations of General Landscape Areas during Establishment Period

Item	Maintenance Operation	Frequency	J	F	M	A	M	J	J	A	S	O	N	D
1	Replacement Planting	As required within 14 days												
2	Tree Support Inspection/Adjustment	Once/month	1	1	1	1	1	1	1	1	1	1	1	1
3	Checking After Adverse Weather	As required												
4	Watering	280 days/year, as required												
5	Litter / Debris Collection	Daily												
6	Weed Control	21/year	1	1	2	2	2	2	2	2	2	2	2	1
7	Lawn Mowing	20/year	1	1	2	2	2	2	2	2	2	2	2	
8	Fertiliser Application	Twice/year			1						1			
9	Soil Aeration	Twice/year			1						1			
10	Tying climbers to supports and climber wires	Check monthly, tie as necessary	1	1	1	1	1	1	1	1	1	1	1	1
11	Climber wires	Check every two months; adjust/replace as necessary		1		1		1		1		1		1
12	Pruning	Refer to Appendix D												
14	Thinning	Refer to Appendix D												
15	Top-up Mulch	Twice/year			1						1			
16	Pest Control	As required												
17	Maintenance Record	Once/month												
18	Joint Maintenance Inspection (Landscape Designer, Field Officer, Contractor and Subcontractor)	Once/month	1	1	1	1	1	1	1	1	1	1	1	1
19	Tree Risk Assessment	Once/year			1									

***For flowering trees and shrubs, pruning shall only be carried out after flowering.**

2. Post Planting Care Schedule - General Landscape Areas at Year One After Establishment Period

GENERAL - After Establishment Period, operations to be carried as scheduled below.

Table 2: Maintenance Operations of General Landscape Areas at Year One after Establishment Period

Item	Maintenance Operation	Frequency	J	F	M	A	M	J	J	A	S	O	N	D
1	Replacement Planting	As required												
2	Tree Support Inspection/Adjustment	Once/month	1	1	1	1	1	1	1	1	1	1	1	1
3	Checking After Adverse Weather	As required												
4	Watering	280 days/year, as required												
5	Litter Collection	Daily	1	1	1	1	1	1	1	1	1	1	1	1
6	Weed Control	15/year	1	1	2	1	2	1	2	1	2	2	2	1
7	Lawn Mowing	18/year	1		2	2	2	2	2	2	2	2	1	
8	Fertiliser Application	Twice/year			1							1		
9	Soil Aeration	Twice/year			1							1		
10	Pruning	Refer to Appendix D												
11	Thining	Refer to Appendix D												
12	Top-up Mulch	Twice/year			1						1			
13	Pest Control	As required												
14	Periodic Inspection by User and Horticultural Maintenance Contractor	Quarterly/ Once/ month during planting season	1			1	1	1	1	1	1		1	
15	Tree Risk Assessment	Once/year			1									

***For flowering trees and shrubs, pruning shall only be carried out after flowering.**

3. Post Planting Care Schedule - General Landscape Areas Long Term Maintenance Operations

GENERAL - After Establishment Period, operations to be carried as scheduled below.

Table 3: Long Term Maintenance Operations of General Landscape Areas

Item	Maintenance Operation	Frequency	J	F	M	A	M	J	J	A	S	O	N	D
1	Replacement Planting	As required												
2	Tree Support Inspection/Adjustment	As required												
3	Checking After Adverse Weather	As required												
4	Watering	280 days/year, as required												
5	Litter Collection	Daily	1	1	1	1	1	1	1	1	1	1	1	1
6	Weed Control	15/year	1	1	1	1	1	1	1	1	1	1	1	1
7	Lawn Mowing	18/year	1		2	2	2	2	2	2	2	2	1	
8	Fertiliser Application	Once/year			1									
9	Soil Aeration	Twice/year			1						1			
10	Pruning	Varies according to species; check monthly; treat im- mediately												
11	Thining**	Once/year								1				
12	Top-up Mulch	Once/year			1									
13	Pest Control	As required												
14	Periodic Inspection by User and Horticultural Maintenance Contractor	Quarterly			1			1		1			1	
15	Tree Risk Assessment	Once/year			1									

*For flowering trees and shrubs, pruning shall only be carried out after flowering.

**Thinning frequency is subject to plant growth.

C. LONG-TERM TURF MAINTENANCE OPERATIONS

BASIC REQUIREMENTS:

Prior to the formulation of a practical turf maintenance program for large turf amenity areas, the following understanding should be established.

1. Control usage: Grass is a living thing. Un-controlled uses of the grass areas would bring wears and tears to the point of no return. Control usage of the area is hence vitally important for the well-being of the grass and in particular the recuperation of the grass so to prolong the usability of the turf surface.
2. Over-seeding of winter-grass around late October: In order to maintain the standard or the grass cover, over-seeding of a "winter grass" would be required prior to the onset of the cooler months. Perennial ryegrass, with a proven record of success, should be used for the over-seeding. Special machine (over-seeder) should be used for sowing the grass seeds. The sowing rate ranges from 1.36 - 2.27 kilograms per 100 square meters. Some topping up of seeds for maintenance purpose would be need afterwards.
3. On Site Nursery: An on-site nursery will be established for a steady supply of quality sods for emergency repairing, etc.
4. Turf maintenance equipment: The following listed equipment is considered essential for the maintenance of a quality amenity area of the large lawn area:
 - a. One unit of ride-on 3-gang cylinder mower
 - b. One unit of multi-purpose utility vehicle equipped with the following accessories:
 - i. Top-dresser
 - ii. Broad-caster
 - iii. Long-broom sprayer
 - iv. Sweeper
 - v. Core-pusher (optional)
 - vi. Spiking/slicing/coring unit
 - vii. Over-seeding unit
 - viii. Verti-cutting unit
 - c. 2 units of hand rotary mowers
 - d. Rollers of various weighs and sizes
 - e. Hand metal rake and other hand tools
 - f. Built-in irrigation system which would provide adequate and even distribution of irrigation water
5. Trained staffs (supervisor and workers):
The supervisor responsible for the maintenance of the amenity area should have the basic knowledge on turf management. Some training on the respective fields is needed.
6. Closing the Field Mechanism: Fence off Main event lawn, Promenade lawn, Small lawn opposite Freespace under inclement weather condition, etc.

GENERAL MAINTENANCE REQUIREMENT:

1. Rest time: Rest time should be catered for the turf area each week. The area should be sectionalized. Sections should be used on rotational basis. The rest time should be programmed carefully and the entire area should be open for major events. Ideally the area should be close every one day per week for carrying out the weekly maintenance works, e.g. mowing, coring, etc.
2. Pest Period: Two one-month rest periods should be allowed. One commencing in early November and the other in late May to facilitate the introduction of the winter-grass seeds (over-seeding) and for better transition of the grass after the cooler months. Timing of the rest period can adjust slightly to cope with the situation specific to the site.
3. Storage Room: Special area/room should be provided for sheltering equipment, and for storing fertilizers, pesticides, etc.
4. Storage Bays: Bays for storing sand and other material.

MAINTENANCE PROGRAM :

1. Mowing: Mowing should be carried out on weekly basis. During the growth period, the mowing height should be set at 38 mm. During the cooler months and with the over-seeding of the winter-grass, the mowing height should be reduced to 38 - 42 mm. Grass chipping should be mechanically or manually removed after each mowing
2. Top-dressing: At least 2 times annually. About 42 mm of sand should be applied in each application.
3. De-thatching by means of the following:
 - a. Verti-cutting: 1-2 times annually. One is done in conjunction with the over-seeding operation. The depth of the cutting should be set at 76 mm or about 26 mm below the thatch layer.
 - b. Solid-tine coring using 6 mm diameter tines: Once every two months.
 - c. Hollow-tine coring using 12 mm diameter tine: Once annually.

4. Fertilization
Fertilization will be needed regularly. Usually complete fertilizer supplemented with other essential and trace elements will be applied on monthly basis. The rate of application would be equivalent of 15-20 gm/100 m². Prior to the onset of the winter, one application of potash would be recommended. Immediate after over-seeded a phosphate-rich fertilizer should be applied. Liming only when the pH of the rootzone layer is below 6.0. Application of elemental sulphur when the pH is higher than 7.4.
5. Pest Control
The Integrated Pest Management (IPM) principle should be adopted on pest control. The basics for IPM are: site assessment, monitoring, setting thresholds, stress management and identification and optimizing management operations. In short with the back up of the needed information, treat the field only when needed! Various pesticides, namely insecticides, fungicides, herbicides.
6. Planning and Record Keeping
A set of routine cultural practice should be incorporated in the weekly maintenance program. All other activities should be recorded in the log book. See typical record sheet as shown in the chart below. This or similar chart can be used for planning and record purpose.

Grow-In-Period (Short Term Management Programme) first three months after the completion of sprigging)

Page 1 of 3

Dte Wk	Mon	Tue	Wed	Thu	Fri	Sat	Sun
1	1 Inserting loosing & replenishing bare patches (W)	2 Inserting loosing & replenishing bare patches (W)	3 (W)	4 (W)	5 (W)	6 (W)	7 (W)
2	8 Manual Weeding	9 (W)	10 (W)	11 (W)	12 (W)	13 (W)	14 (W)
3	15 (W)	16 (W)	17 Fertilizing	18 (W)	19 (W)	20 Manual Weeding	21 (W)
4	22 First mowing to 38mm when grass attaining 75mm and with clippings removed (W)	23 (W)	24 (W)	25 (W)	26 (W)	27 (W)	28 (W)

1. 2 testing period allowed. One around May and one around November
2. Wintergrass will gradually fade out in the summer month

Table 1 of 3 : Week 1 -4

Design Consultancy
for the Park Development
for West Kowloon Cultural District
Submission of Tree and Turf Grass Planting and Landscape Plans

Grow-In-Period (Short Term Management Programme) first three months after the completion of sprigging)

Page 2 of 3

Dte Wk	Mon	Tue	Wed	Thu	Fri	Sat	Sun
5	29 Mowing at 32mm (W)	30 (W)	1 (W)	2 (W)	3 (W)	4 (W)	5 (W)
6	6 Mowing at 32mm (W)	7 (W)	8 Fertilizing (W)	9 (W)	10 (W)	11 (W)	12 Slicing followed by topdressing with 2mm of sand (W)
7	13 Mowing at 32mm (W)	14 (W)	15 (W)	16 (W)	17 (W)	18 (W)	19 (W)
8	20 Mowing at 32mm (W)	21 (W)	22 (W)	23 (W)	24 (W)	25 (W)	26 (W)

1. 2 testing period allowed. One around May and one around November
2. Wintergrass will gradually fade out in the summer month

Table 3 of 3 : Week 5 -8

Design Consultancy
for the Park Development
for West Kowloon Cultural District
Submission of Tree and Turf Grass Planting and Landscape Plans

Grow-In-Period (Short Term Management Programme) first three months after the completion of sprigging)

Page 3 of 3

Dte Wk	Mon	Tue	Wed	Thu	Fri	Sat	Sun
9	27 Mowing at 32mm (W)	28 (W)	29 Fertilizing (W)	30 (W)	31 (W)	1 (W)	2 (W)
10	3 Mowing at 32mm (W)	4 (W)	5 (W)	6 (W)	7 (W)	8 Manuel weeding (W)	9 (W)
11	10 Mowing at 32mm (W)	11 (W)	12 (W)	13 (W)	14 (W)	15 (W)	16 (W)
12	17 Mowing at 32mm (W)	18 (W)	19 Fertilizing (W)	20 (W)	21 (W)	22 (W)	23 (W)

1. 2 testing period allowed. One around May and one around November
2. Wintergrass will gradually fade out in the summer month

Table 3 of 3 : Week 9 -12

Design Consultancy
for the Park Development
for West Kowloon Cultural District
Submission of Tree and Turf Grass Planting and Landscape Plans

Long Term (Yearly) Turf Management Programme Table (Imposed after the Grown-in-period)

Page 1 of 3

Month	Mowing	Watering	Fertilizing	Aeration	Topdressing	Verti-cutting	Pesticide application	Overseeding
Jan	Weekly at 42mm	Daily or as required	Bi-monthly with comp'd fertilizer	Bi-monthly with solid tine/blade			When needed	When needed
Feb	Weekly at 42mm	Daily or as required					When needed	
Mar	Weekly at 32mm	Daily or as required	Bi-monthly with comp'd fertilizer	Bi-monthly with solid tine/blade			When needed	
Apr	Weekly at 32mm	Daily or as required					When needed	

1. 2 testing period allowed. One around May and one around November
2. Wintergrass will gradually fade out in the summer month

Table 1 of 3 : Jan -Apr

Design Consultancy
for the Park Development
for West Kowloon Cultural District
Submission of Tree and Turf Grass Planting and Landscape Plans

Long Term (Yearly) Turf Management Programme Table (Imposed after the Grown-in-period)

Page 2 of 3

Month	Mowing	Watering	Fertilizing	Aeration	Topdressing	Verti-cutting	Pesticide application	Overseeding
May	Weekly at 32mm	Daily or as required	Bi-monthly with comp'd fertilizer	Yearly hollow tine	Semi-yearly		When needed	
June	Weekly at 32mm	Daily or as required				Semi-yearly	When needed	
Jul	Weekly at 32mm	Daily or as required	Bi-monthly with comp'd fertilizer	Bi-monthly with solid tine/blade			When needed	
Aug	Weekly at 32mm	Daily or as required					When needed	

1. 2 testing period allowed. One around May and one around November
2. Wintergrass will gradually fade out in the summer month

Table 2 of 3 : May -Aug

Design Consultancy
for the Park Development
for West Kowloon Cultural District
Submission of Tree and Turf Grass Planting and Landscape Plans

Long Term (Yearly) Turf Management Programme Table (Imposed after the Grown-in-period)

Page 3 of 3

Month	Mowing	Watering	Fertilizing	Aeration	Topdressing	Verti-cutting	Pesticide application	Overseeding
Sep	Weekly at 32mm	Daily or as required	Bi-monthly with comp'd fertilizer	Bi-monthly with solid tine/blade		Semi yearly	When needed	
Oct	Weekly at 32mm	Daily or as required					When needed	
Nov	Weekly at 42mm	Daily or as required	Bi-monthly with comp'd fertilizer	Semi-yearly with hollow tine	Semi yearly		When needed	Sowing Wintergrass Seeds (Optional)
Dec	Weekly at 42mm	Daily or as required					When needed	

1. 2 testing period allowed. One around May and one around November
2. Wintergrass will gradually fade out in the summer month

Table 3 of 3 : Sep -Dec

APPENDIX D – PRUNING SCHEDULE

Tree Pruning Schedule (Page 1 of 4)

* Notes: (1) For flowering trees and shrubs, pruning shall only be carried out after flowering; (2) Frequency and period are subject to site conditions, actual growth of plant on site and performance of maintenance personnel; (3) pruning of each plant should be assessed on a case to case basis by gardener.

Code	Nursery Species No.	Botanical Name	Chinese Name	Flowering & Fruiting Periods	Pruning *(the exact pruning time & frequency depend on the actual situation)*		
					Frequency	Season	Month
Trees							
Fv1		<i>Ficus virens</i>	大葉榕	Apr-Oct	once annually	Spring	Feb-Apr
Fv2		<i>Ficus virens</i>	大葉榕	Apr-Oct	once annually	Spring	Feb-Apr
Fm1		<i>Ficus microcarpa</i>	細葉榕	May-Dec	once annually	Spring	Feb-Apr
Fm2		<i>Ficus microcarpa</i>	細葉榕	May-Dec	once annually	Spring	Feb-Apr
Aa2	FT02	<i>Artocarpus altilis</i>	麵包樹	Apr-Aug	once annually	Fall	Oct - Dec
Ahe2	FT03	<i>Artocarpus heterophyllus</i>	波羅蜜	Mar-Oct	once annually	Fall	Oct - Dec
Bb2	WL04	<i>Bauhinia x blakeana</i>	洋紫荊	Dec-May	once annually	Fall	Oct - Dec
Bp2	WL05	<i>Bauhinia purpurea</i>	紅花羊蹄甲	Sep-Feb	once annually	Spring	Feb-Apr
Bv2	WL06	<i>Bauhinia variegata</i>	宮粉羊蹄甲	Mar-Aug	once annually	Fall	Oct - Dec
Bvc2	WL07	<i>Bauhinia variegata var. candida</i>	白花羊蹄甲	Mar-Aug	once annually	Fall	Oct - Dec
Bo3	WL08	<i>Bixa orellana</i>	胭脂樹	May-Feb	once annually	Spring	Feb-Apr
Bc1		<i>Bombax ceiba</i>	木棉	Mar-Apr	once annually	Spring	Feb-Apr
Ba-1	WL42	<i>Brachychiton acerifolius</i>	槭葉蘋婆	Apr	once annually	Spring	Feb-Apr
Dr2		<i>Delonix regia</i>	鳳凰木	Jun-Oct	once annually	Fall	Oct - Dec
Aj2		<i>Albizia julibrissin</i>	合歡	May-Jul	once annually	Fall	Oct-Dec
Es2	WL19	<i>Elaeocarpus sylvestris</i>	山杜英	Apr-Aug	once annually	Fall	Oct - Dec
Jm2		<i>Jacaranda mimosifolia</i>	藍花楹	Apr-Jun	once annually	Fall	Oct - Dec
Ls2		<i>Lagerstroemia speciosa</i>	大花紫薇	May-Jul	once annually	Fall	Oct - Dec
Mf2		<i>Maglietia fordiana</i>	木蓮	May-Oct	once annually	Fall	Oct - Dec
Mm2	WL28	<i>Michelia maudiae</i>	深山含笑	Feb-Oct	once annually	Fall	Oct - Dec
Rc2		<i>Rhodoleia championii</i>	紅花荷	Feb-Aug	once annually	Fall	Oct - Dec
Tc1		<i>Tabebuia chrysantha</i>	風鈴木	Mar-Apr	once annually	Fall	Oct - Dec
Tc2	UF13	<i>Tabebuia chrysantha</i>	風鈴木	Mar-Apr	once annually	Fall	Oct - Dec
Ti1		<i>Tabebuia impetiginosa</i>	粉紅風鈴木	Mar-Apr	once annually	Fall	Oct - Dec
Ti2	UF14	<i>Tabebuia impetiginosa</i>	粉紅風鈴木	Mar-Apr	once annually	Fall	Oct - Dec
Tp2	UF01	<i>Tabebuia pentaphylla</i>	紅花風鈴木	Mar-Apr	once annually	Fall	Oct - Dec
Vm2	WL14	<i>Vernicia montana</i>	木油桐	Apr-Oct	once annually	Fall	Oct - Dec
Xc2	UF17	<i>Xanthostemon chrysanthus</i>	金蒲桃	Mar-Aug	once annually	Fall	Oct - Dec
Am2	WL40	<i>Adenanthera microsperma</i>	海紅豆	Jul-Aug	once annually	Fall	Oct - Dec
As2	WL03	<i>Aquilaria sinensis</i>	牙香樹	Mar-May	once annually	Fall	Oct - Dec
Cc1		<i>Cinnamomum camphora</i>	樟樹	Apr-May	once annually	Fall	Oct - Dec
Cc2		<i>Cinnamomum camphora</i>	樟樹	Apr-May	once annually	Fall	Oct - Dec
Cc3	WL25	<i>Cinnamomum camphora</i>	樟樹	Apr-May	once annually	Fall	Oct - Dec
Do2	WL16	<i>Dalbergia oliveri</i>	奧氏黃檀	Mar-Nov	once annually	Fall	Oct - Dec
Famo2	WL20	<i>Falcataria moluccana</i>	南洋楹	Apr-Jul	once annually	Fall	Oct - Dec
Famo3		<i>Falcataria moluccana</i>	南洋楹	Apr-Jul	once annually	Fall	Oct - Dec
Fv2		<i>Ficus virens</i>	大葉榕	Apr-Oct	once annually	Fall	Oct - Dec
Fv3		<i>Ficus virens</i>	大葉榕	Apr-Oct	once annually	Fall	Oct - Dec
Lf2	WL01	<i>Liquidambar formosana</i>	楓香	Mar-Sep	once annually	Fall	Oct - Dec

Tree Pruning Schedule (Page 2 of 4)

* Notes: (1) For flowering trees and shrubs, pruning shall only be carried out after flowering; (2) Frequency and period are subject to site conditions, actual growth of plant on site and performance of maintenance personnel; (3) pruning of each plant should be assessed on a case to case basis by gardener.

Code	Nursery Species No.	Botanical Name	Chinese Name	Flowering & Fruiting Periods	Pruning *(the exact pruning time & frequency depend on the actual situation)*		
					Frequency	Season	Month
Trees							
Tt2	WL37	<i>Tipuana tipu</i>	大班木	Sep- Mar	once annually	Fall	Oct - Dec
Tc3		<i>Tabebuia chrysantha</i>	風鈴木	Mar-Apr	once annually	Fall	Oct - Dec
Ac2	FT01	<i>Averrhoa carambola</i>	楊桃	May-Dec	once annually	Fall	Oct - Dec
Al2	FT20	<i>Artocarpus lingnanensis</i>	桂木	Mar-Sep	once annually	Fall	Oct - Dec
Ah2		<i>Artocarpus hypargyreus</i>	白桂木	May-Aug	once annually	Fall	Oct - Dec
Cd2	WL13	<i>Cedrus deodara</i>	雪松	Sep-Oct	once annually	Fall	Oct - Dec
Cs2		<i>Celtis sinensis</i>	朴樹	Mar-Oct	once annually	Fall	Oct - Dec
Cta2	WF16	<i>Chukrasia tabularia</i>	麻棟	Apr-Mar	once annually	Fall	Oct - Dec
Cl2	FT08	<i>Clausena lansium</i>	黃皮	Apr-Aug	once annually	Fall	Oct - Dec
Cn2	WF01	<i>Cleistocalyx operculatus</i>	水翁	May-Sep	once annually	Fall	Oct - Dec
Di2	WL17	<i>Dillenia indica</i>	第倫桃	Jan-Oct	once annually	Fall	Oct - Dec
DI2	FT09	<i>Dimocarpus longan</i>	龍眼	Mar-Nov	once annually	Fall	Oct - Dec
Dd2	FT04	<i>Dracontomelon duperreanum</i>	人面子	Apr-Nov	once annually	Fall	Oct - Dec
Dli2	WF03	<i>Drypetes littoralis</i>	鐵色	-	once annually	Fall	Oct - Dec
lr1		<i>Ilex rotunda</i>	鐵冬青	Mar-Apr	once annually	Fall	Oct - Dec
Ej2	FT11	<i>Erobotrya japonica</i>	枇杷果	Sep-May	once annually	Fall	Oct - Dec
FaV2	WL21	<i>Ficus altissima 'Variegata'</i>	斑葉高山榕	Mar-Oct	once annually	Spring	Feb-Apr
FbS2	UF02	<i>Ficus benjamina 'Starlight'</i>	星光榕	Sep-Nov	once annually	Spring	Feb-Apr
Fvc1		<i>Ficus variegata</i>	青果榕	Mar-Dec	once annually	Fall	Oct - Dec
Gb2	UF03	<i>Ginkgo biloba</i>	銀杏	Mar-Oct	once annually	Fall	Oct - Dec
Gba2	WF04	<i>Grevillea banksii</i>	紅花銀樺	Mar-May	once annually	Fall	Oct - Dec
Kp2	UF05	<i>Kigelia pinnata</i>	臘腸樹	Jun-Nov	once annually	Fall	Oct - Dec
Ke2	UF06	<i>Koelreuteria elegans subsp. formosana</i>	台灣欒樹	May-Dec	once annually	Fall	Oct - Dec
Lc2	FT14	<i>Litchi chinensis</i>	荔枝	Mar-Aug	once annually	Fall	Oct - Dec
Masa2	UF10	<i>Macaranga sampsonii Hance</i>	鼎湖血桐	Apr-Aug	once annually	Fall	Oct - Dec
Mgr2		<i>Magnolia grandiflora</i>	荷花玉蘭	May-Oct	once annually	Fall	Oct - Dec
Mpa2	WL26	<i>Mallotus paniculatus</i>	白楸	Jul-Dec	once annually	Fall	Oct - Dec
Mi2	FT15	<i>Mangifera indica</i>	芒果	Mar-May	once annually	Fall	Oct - Dec
Mz2	FT16	<i>Manilkara zapota</i>	人心果	Jun-Oct	once annually	Fall	Oct - Dec
Mal2	UF18	<i>Michelia x alba</i>	白蘭	Apr-Sep	once annually	Fall	Oct - Dec
Pt2	WF08	<i>Peltophorum tonkinense</i>	銀珠	Mar-Oct	once annually	Fall	Oct - Dec
Ph2	WF10	<i>Pterospermum heterophyllum</i>	翻白葉樹	Sep-Nov	once annually	Fall	Oct - Dec
Po2	UF07	<i>Platanus orientalis</i>	法桐	Feb-Sep	once annually	Fall	Oct - Dec
Vm1		<i>Vernicia montana</i>	木油樹	Apr-Jun	once annually	Fall	Oct - Dec
Pc2	UF09	<i>Pyrus calleryana</i>	豆梨	Feb-Sep	once annually	Fall	Oct - Dec
Pp2		<i>Pongamia pinnata</i>	水黃皮	May-Jun	once annually	Fall	Oct - Dec
Rh2	WF11	<i>Radermachera hainanensis</i>	海南菜豆樹	-	once annually	Fall	Oct - Dec
Rt1	WL31	<i>Reevesia thyrsoidea</i>	梭羅樹	Mar-Apr	once annually	Fall	Oct - Dec
Mc1		<i>Machilus chekiangensis</i>	浙江潤楠	Feb-Mar	once annually	Fall	Oct - Dec

Tree Pruning Schedule (Page 3 of 4)

* Notes: (1) For flowering trees and shrubs, pruning shall only be carried out after flowering; (2) Frequency and period are subject to site conditions, actual growth of plant on site and performance of maintenance personnel; (3) pruning of each plant should be assessed on a case to case basis by gardener.

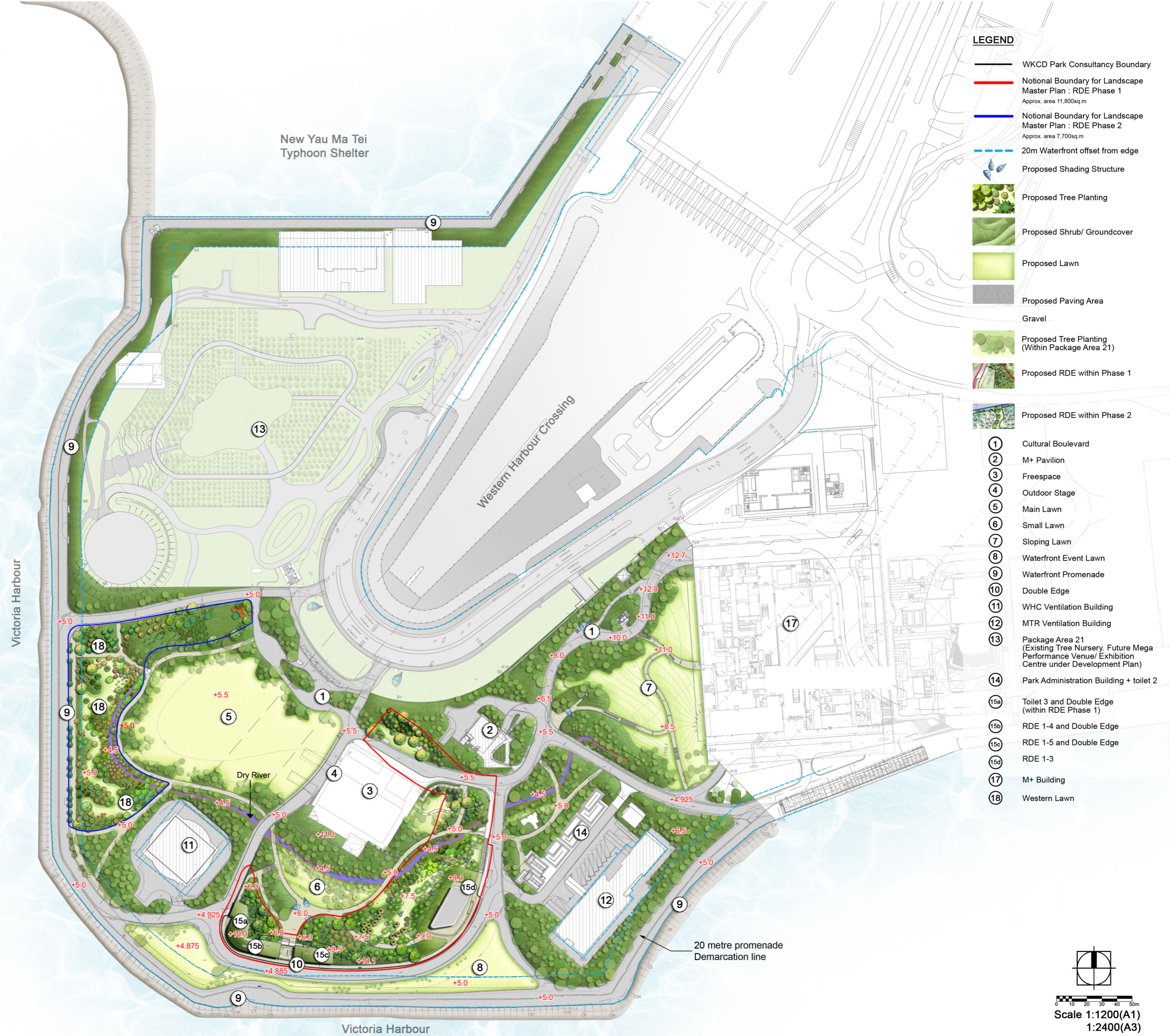
Code	Nursery Species No.	Botanical Name	Chinese Name	Flowering & Friuting Periods	Pruning *(the exact pruning time & frequency depend on the actual situation)*		
					Frequency	Season	Month
Trees							
Sd2	UF11	<i>Saraca dives</i>	無憂花	Apr-Oct	once annually	Fall	Oct - Dec
Sad2	WL34	<i>Sapium discolor</i>	山烏柏	Apr-Oct	once annually	Fall	Oct - Dec
Ssu2	WF13	<i>Schima superba</i>	木荷	Jun-Aug	once annually	Fall	Oct - Dec
Sh2	WL36	<i>Syzygium hancei</i>	韓氏蒲桃	Jul-Sep	once annually	Fall	Oct - Dec
TmT2	UF16	<i>Terminalia mantaly 'Tricolor'</i>	錦葉欖仁	-	once annually	Fall	Oct - Dec
Vo3		<i>Viburnum odoratissimum</i>	珊瑚樹	Mar-Apr	once annually	Spring	Feb-Apr
Bj1		<i>Bischofia javanica</i>	秋楓	Jun-Aug	once annually	Fall	Oct - Dec
Bt2	WL09	<i>Bridelia tomentosa</i>	土蜜樹	Jan-Dec	once annually	Fall	Oct - Dec
Cf2	WL11	<i>Caesalpinia ferrea</i>	巴西鐵木	Jun-Aug	once annually	Fall	Oct - Dec
Cafi2		<i>Castanopsis fissa</i>	蠶菊錐	Apr-Dec	once annually	Fall	Oct - Dec
Ct2	WL32	<i>Crateva trifoliata</i>	樹頭菜	Mar-Nov	once annually	Fall	Oct - Dec
Fb1		<i>Ficus benjamina</i>	垂榕	Sep-Nov	once annually	Spring	Feb-Apr
Fb2		<i>Ficus benjamina</i>	垂榕	Sep-Nov	once annually	Spring	Feb-Apr
Fb3		<i>Ficus benjamina</i>	垂榕	Sep-Nov	once annually	Spring	Feb-Apr
Fma2	WL39	<i>Ficus macrophylla</i>	澳洲大葉榕	May-Dec	once annually	Spring	Feb-Apr
PL2	UF08	<i>Polyalthia longifolia</i>	長葉暗羅	Mar-Apr	once annually	Fall	Oct - Dec
Pi2	WL30	<i>Pterocarpus indicus</i>	紫檀	May-Sep	once annually	Fall	Oct - Dec
Pi3		<i>Pterocarpus indicus</i>	紫檀	May-Sep	once annually	Fall	Oct - Dec
Ss2	WL33	<i>Sapindus saponaria</i>	無患子	May-Dec	once annually	Fall	Oct - Dec
Sase1		<i>Sapium sebiferum</i>	烏柏	Apr-Nov	once annually	Fall	Oct - Dec
Sase2	WL35	<i>Sapium sebiferum</i>	烏柏	Apr-Nov	once annually	Fall	Oct - Dec
Tec2		<i>Terminalia catappa</i>	欖仁樹	Mar-Sep	once annually	Fall	Oct - Dec
Tec3	WF12	<i>Terminalia catappa</i>	欖仁樹	Mar-Sep	once annually	Fall	Oct - Dec
Td1		<i>Taxodium distichum</i>	落羽杉	Mar-Oct	once annually	Fall	Oct - Dec
Td2		<i>Taxodium distichum</i>	落羽杉	Mar-Oct	once annually	Fall	Oct - Dec
A.s.*	WL02	<i>Alsophila spinulosa</i>	刺杪羅	-	once annually	Fall	Oct - Dec
FvS2	WL12	<i>Ficus virens var. sublanceolata</i>	黃葛樹	Apr-Oct	once annually	Spring	Feb-Apr
C.b.	WL15	<i>Cycas balansae</i>	寬葉蘇鐵		once annually	Fall	Oct - Dec
DDr2	WL18	<i>Dracaena draco</i>	龍血樹	-	once annually	Fall	Oct - Dec
Ht2	WL23	<i>Hibiscus tiliaceus</i>	黃槿	Jul-Aug	once annually	Fall	Oct - Dec
Vo2	WL38	<i>Viburnum odoratissimum</i>	珊瑚樹	Mar-Aug	once annually	Fall	Oct - Dec
C.m.	WL41	<i>Ceratozamia mexicana</i>	墨西哥蘇鐵	-	once annually	Fall	Oct - Dec
Ap2	WF02	<i>Acer palmatum Thunb</i>	槭樹	Apr-Oct	once annually	Fall	Oct - Dec
Ps2	WF05	<i>Photinia serrulata Lindl.</i>	石楠	Jun-Feb	once annually	Spring	Feb-Apr
Pf2	WF06	<i>Photinia fraseri</i>	紅葉石楠	Dec-Feb	once annually	Spring	Feb-Apr
Cj2	WF09	<i>Camellia japonica</i>	茶花	Jan-Oct	once annually	Fall	Oct - Dec
Sl2	WF14	<i>Sterculia lanceolata</i>	假蘋婆	Apr-Sep	once annually	Fall	Oct - Dec
Tpo2	WF15	<i>Thespesia populnea</i>	紅葉黃槿	Jan-Dec	once annually	Fall	Oct - Dec
Tm2	UF15	<i>Terminalia mantaly</i>	細葉欖仁	-	once annually	Fall	Oct - Dec

Tree Pruning Schedule (Page 4 of 4)

* Notes: (1) For flowering trees and shrubs, pruning shall only be carried out after flowering; (2) Frequency and period are subject to site conditions, actual growth of plant on site and performance of maintenance personnel; (3) pruning of each plant should be assessed on a case to case basis by gardener.

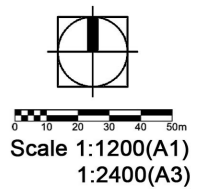
Code	Nursery Species No.	Botanical Name	Chinese Name	Flowering & Fruiting Periods	Pruning <small>*(the exact pruning time & frequency depend on the actual situation)*</small>		
					Frequency	Season	Month
Trees							
Pg2	FT19	<i>Psidium guajava</i>	番石榴	Aug-Sep	once annually	Fall	Oct - Dec
Cr2		<i>Citrus reticulata</i>	柑橘	Apr-May	once annually	Fall	Oct - Dec
Csi2		<i>Citrus sinensis</i>	橙	Mar-May	once annually	Fall	Oct - Dec
Cm2		<i>Citrus maxima</i>	柚	Apr-May	once annually	Fall	Oct - Dec
Ma2		<i>Melia azedarach</i>	苦楝	Apr-May	once annually	Fall	Oct - Dec
Dw		<i>Dombeya wallichii</i>	吊芙蓉	Jan-Feb	once annually	Spring	Feb-Apr
Lcs		<i>Lophostemon confertus</i>	紅膠木	May-Jul	once annually	Fall	Oct - Dec
Pea		<i>Phyllanthus emblica</i>	餘甘子	Apr-Jun	once annually	Fall	Oct - Dec
Gr2		<i>Grevillea robusta</i>	銀樺	Mar-May	once annually	Fall	Oct - Dec
Sjp		<i>Sophora japonica 'Pendula'</i>	龍爪槐	Jul-Aug	once annually	Fall	Oct - Dec
Mg		<i>Metasequoia glyptostroboides</i>	水杉	Jan-Mar	once annually	Fall	Oct - Dec
Pts		<i>Pandanus tectorius</i>	露兜樹	May-Aug	once annually	Fall	Oct - Dec
Syj		<i>Syzygium jambos</i>	蒲桃	Mar-Apr	once annually	Fall	Oct - Dec
DK		<i>Diospyros kaki</i>	柿子	May-Jun	once annually	Fall	Oct - Dec
Palms							
Rr#		<i>Roystonea regia</i>	王棕	Mar-Apr	once annually	Fall	Oct - Dec
Wb2		<i>Wodyeta bifurcata</i>	狐尾椰子	-	once annually	Fall	Oct - Dec

APPENDIX E CONCEPTUAL LANDSCAPE PROPOSAL (For Reference Only)

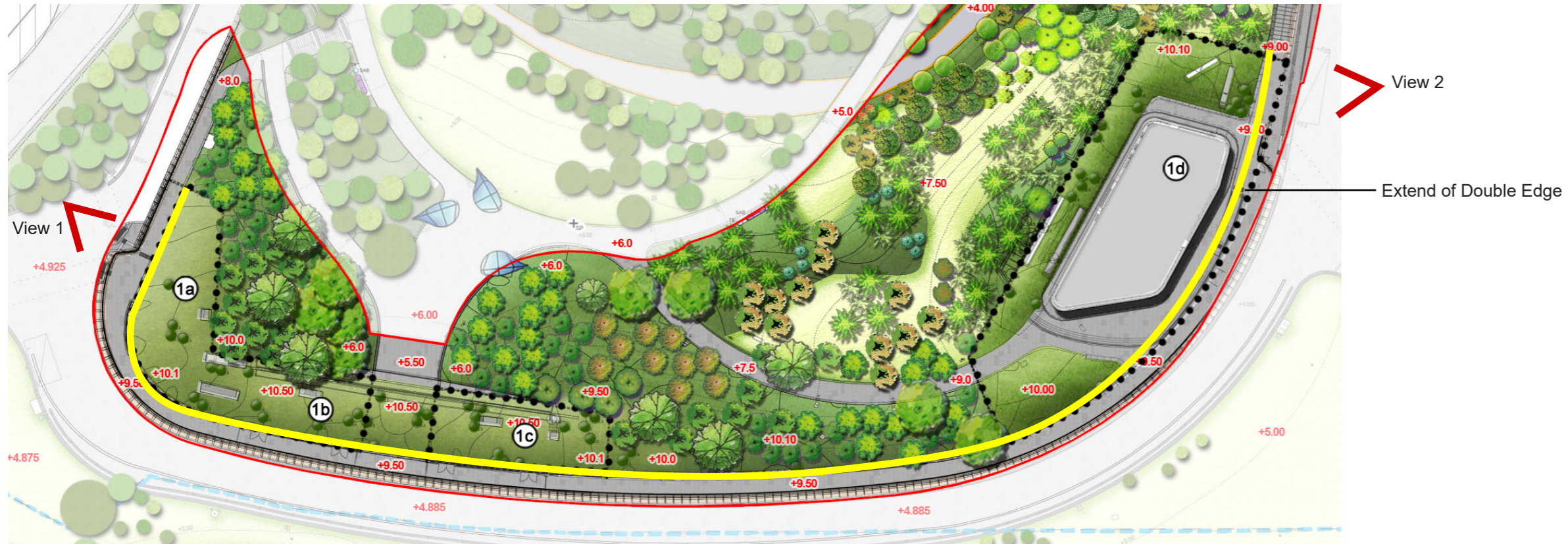


LEGEND

- WKCD Park Consultancy Boundary
- Notional Boundary for Landscape Master Plan : RDE Phase 1
Approx. area 11,800sq.m
- Notional Boundary for Landscape Master Plan : RDE Phase 2
Approx. area 7,700sq.m
- 20m Waterfront offset from edge
- Proposed Shading Structure
- Proposed Tree Planting
- Proposed Shrub/ Groundcover
- Proposed Lawn
- Proposed Paving Area
- Gravel
- Proposed Tree Planting (Within Package Area 21)
- Proposed RDE within Phase 1
- Proposed RDE within Phase 2
- 1 Cultural Boulevard
- 2 M+ Pavilion
- 3 Freespace
- 4 Outdoor Stage
- 5 Main Lawn
- 6 Small Lawn
- 7 Sloping Lawn
- 8 Waterfront Event Lawn
- 9 Waterfront Promenade
- 10 Double Edge
- 11 WHC Ventilation Building
- 12 MTR Ventilation Building
- 13 Package Area 21 (Existing Tree Nursery, Future Mega Performance Venue/ Exhibition Centre under Development Plan)
- 14 Park Administration Building + toilet 2
- 15a Toilet 3 and Double Edge (within RDE Phase 1)
- 15b RDE 1-4 and Double Edge
- 15c RDE 1-5 and Double Edge
- 15d RDE 1-3
- 17 M+ Building
- 18 Western Lawn



Design Consultancy
for the Park Development
for West Kowloon Cultural District
Submission of Tree and Turf Grass Planting and Landscape Plans



View 1



View 2

