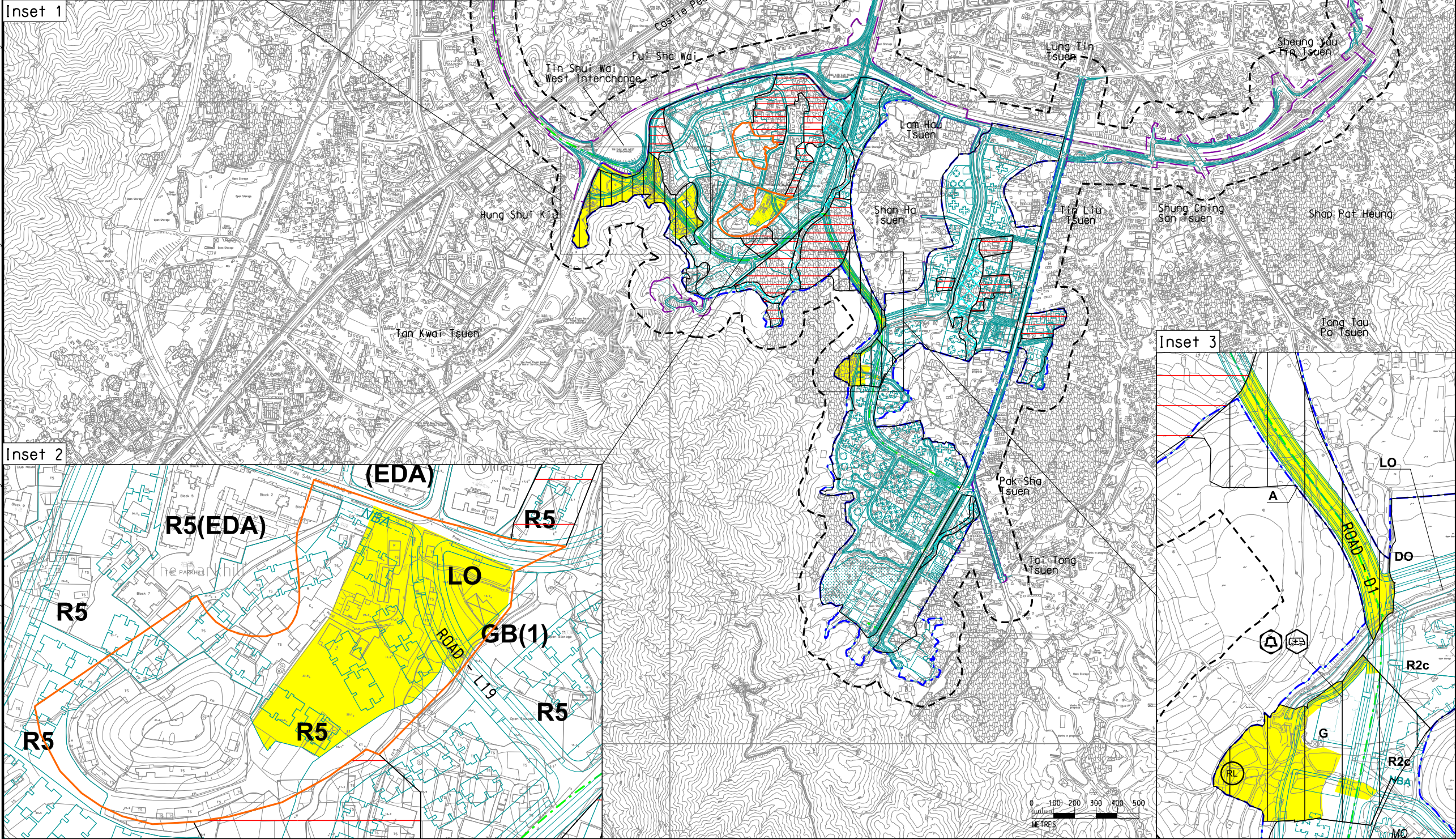
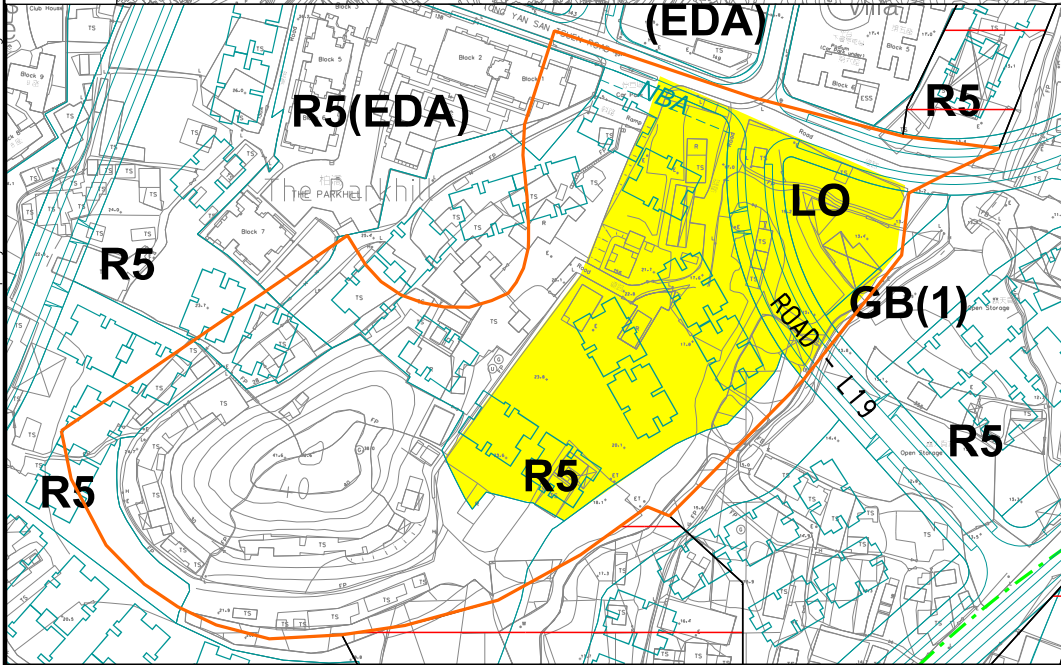


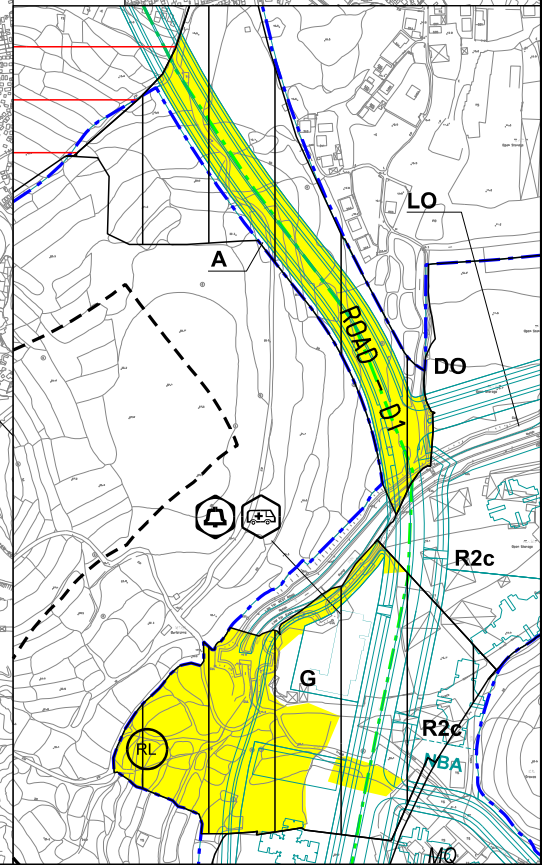
Inset 1



Inset 2



Inset 3



| Land Unit | Key | Geology | Description | Land Use | Potential |
|-----------|-----|--|---------------------------|---|--------------|
| 1 | | Fine-grained granite Metasiltstone and phyllite, with metasandstone Debris flow deposits | Low Hills, Lower Slopes | Agricultural Land; mixed woodland, shrubland and grassland; woodland; field adjoining modern villages | Moderate |
| 2 | | Terraced alluvium | Terraced alluvium Village | | Low-Moderate |
| 3 | | Alluvium | Floodplain | | Low-Moderate |
| 4 | | Exempted areas | Rest of the PDAs | Industrial & residential land; open storage; road/infrastructure | Nil |

- Legend
- Potential Development Area (PDA)
 - Works Boundary Outside PDA
 - New Sewer from YLS STW to the Existing Inlet Chamber of the NWNT Effluent Tunnel at San Wai for Discharging to the Urmston Road Submarine Outfall
 - 100m Assessment Area
 - Surveyed Area
 - Archaeological Survey

| | | | | | |
|---|---------------|-------------|----------------------------|------|-------|
| A | | FIRST ISSUE | | GL | 07/17 |
| Rev | Description | By | Date | | |
| Consultant | | | | | |
| ARUP | | | | | |
| Contract No. and Title | | | | | |
| Agreement No. CE 35/2012(CE) | | | | | |
| Planning and Engineering Study for Housing Sites in Yuen Long South - Investigation | | | | | |
| Drawing title | | | | | |
| Location of Further Archaeological Survey | | | | | |
| Drawing no. | | | | Rev. | |
| Figure 14.1 | | | | A | |
| Drawn | Date | Checked | Approved | | |
| GL | 07/17 | FC | FC | | |
| Scale | 1:20000 ON A3 | Status | PRELIMINARY | | |
| COPYRIGHT RESERVED | | | | | |
| | | | | | |
| 土木工程拓展署 Civil Engineering and Development Department | | | 規劃署 Planning Department | | |