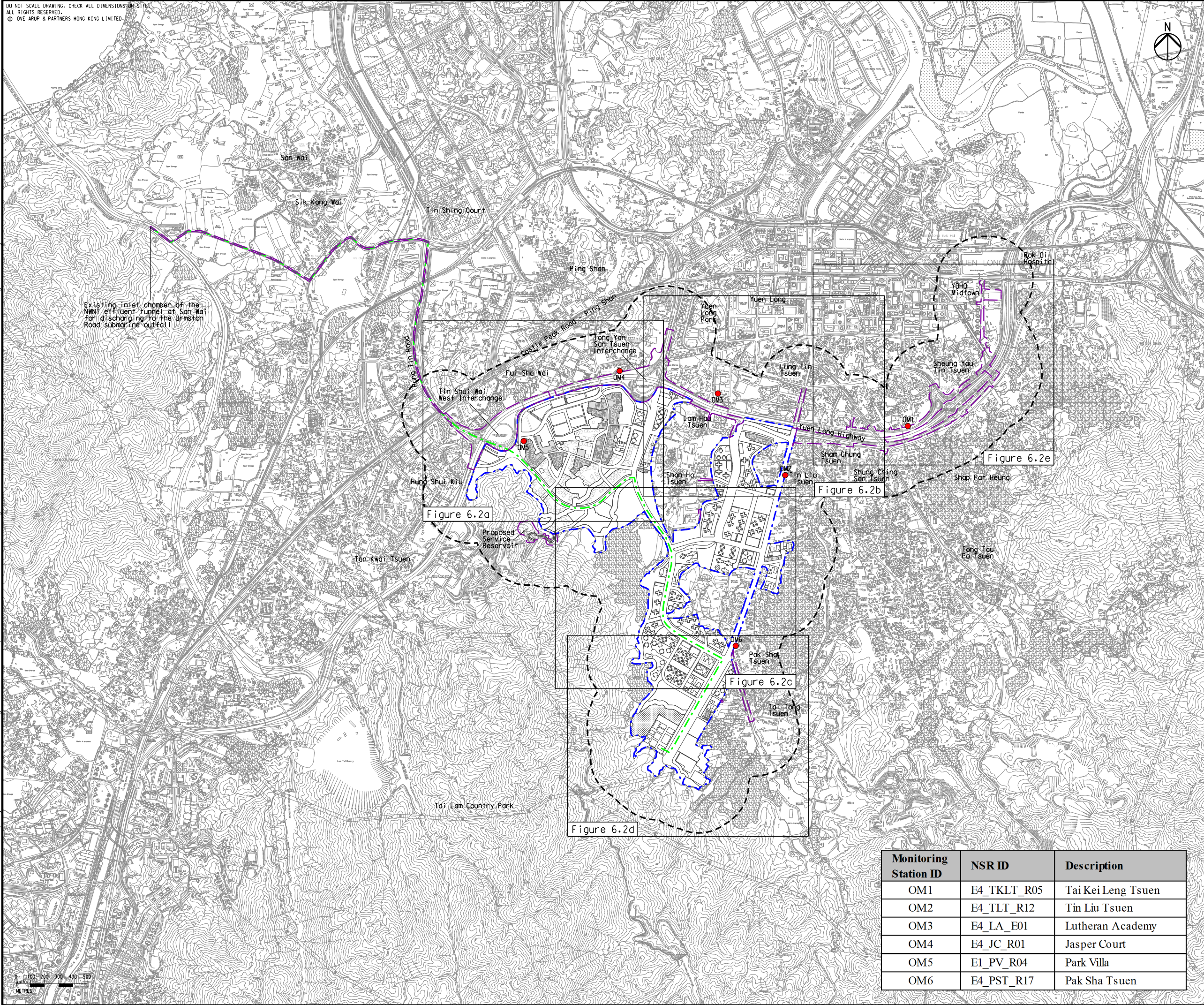


Printed by : 7/23/2017
Filename : \\HKGN\TS22\acoustic\env\project\228228\13 Drawing Deliverables\Report\EM&A Manual\03 Final Figure 6.2 - Locations of Road Traffic Noise Monitoring Station.dgn



- Legend
- Potential Development Area (PDA)
 - Works Boundary Outside PDA
 - New Sewer from YLS STW to the Existing Inlet Chamber of the NWNT Effluent Tunnel at San Wai for Discharging to the Urmston Road Submarine Outfall
 - 300m Assessment Area
 - R5 (Existing Development Area within PDA)
 - Road Traffic Noise Monitoring Station

B	SECOND ISSUE	GL	07/17
A	FIRST ISSUE	GL	05/17
Rev	Description	By	Date

Consultant

ARUP

Contract No. and Title

Agreement No. CE 35/2012(CE)

Planning and Engineering Study for Housing Sites in Yuen Long South - Investigation


Drawing title

Locations of Road Traffic Noise Monitoring Stations (Sheet 1 of 6)


Drawing no. **Figure 6.2** Rev. **B**

Drawn GL	Date 07/17	Checked FC	Approved FC
Scale 1:25000 ON A3	Status	PRELIMINARY	

COPYRIGHT RESERVED



土木工程拓展署
Civil Engineering and Development Department



規劃署
Planning Department

Monitoring Station ID	NSR ID	Description
OM1	E4_TKLT_R05	Tai Kei Leng Tsuen
OM2	E4_TLT_R12	Tin Liu Tsuen
OM3	E4_LA_E01	Lutheran Academy
OM4	E4_JC_R01	Jasper Court
OM5	E1_PV_R04	Park Villa
OM6	E4_PST_R17	Pak Sha Tsuen