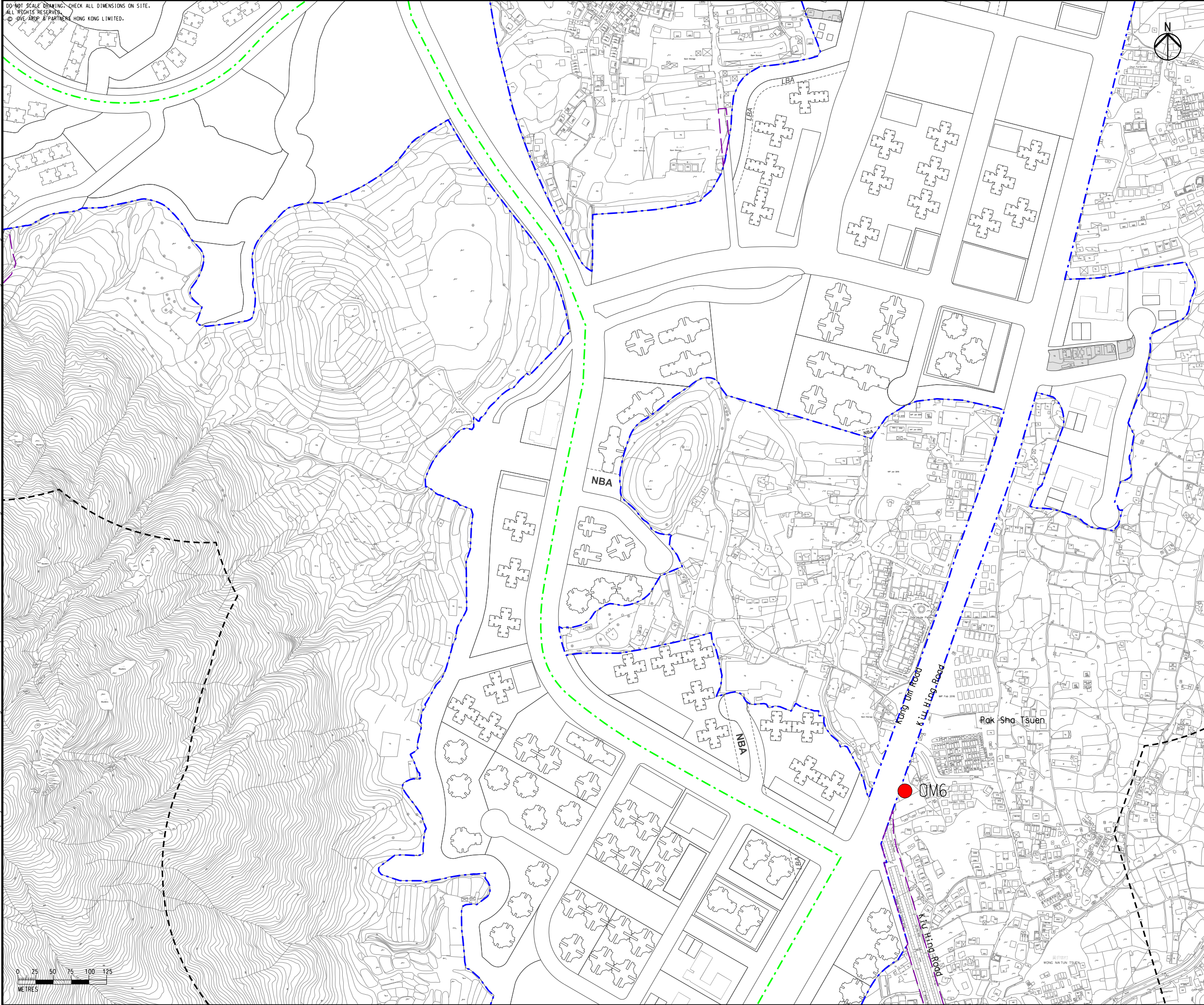


DO NOT SCALE DRAWING. CHECK ALL DIMENSIONS ON SITE.
ALL RIGHTS RESERVED.
© JWE, ARUP & PARTNERS HONG KONG LIMITED.



- Legend
- Potential Development Area (PDA)
 - Works Boundary Outside PDA
 - New Sewer from YLS STW to the Existing Inlet Chamber of the NWNT Effluent Tunnel at San Wai for Discharging to the Urmston Road Submarine Outfall
 - 300m Assessment Area
 - R5 (Existing Development Area within PDA)
 - Road Traffic Noise Monitoring Station

B		SECOND ISSUE		GL	07/17
A		FIRST ISSUE		GL	05/17
Rev	Description	By	Date		

Consultant

ARUP

Contract No. and Title

Agreement No. CE 35/2012(CE)

Planning and Engineering Study for Housing Sites in Yuen Long South - Investigation

Drawing title

Locations of Road Traffic Noise Monitoring Stations (Sheet 4 of 6)

Drawing no. Figure 6.2c			Rev. B
Drawn	Date	Checked	Approved
GL	07/17	FC	FC
Scale	1:5000 @A3		Status PRELIMINARY

COPYRIGHT RESERVED

土木工程拓展署
Civil Engineering and Development Department

規劃署
Planning Department