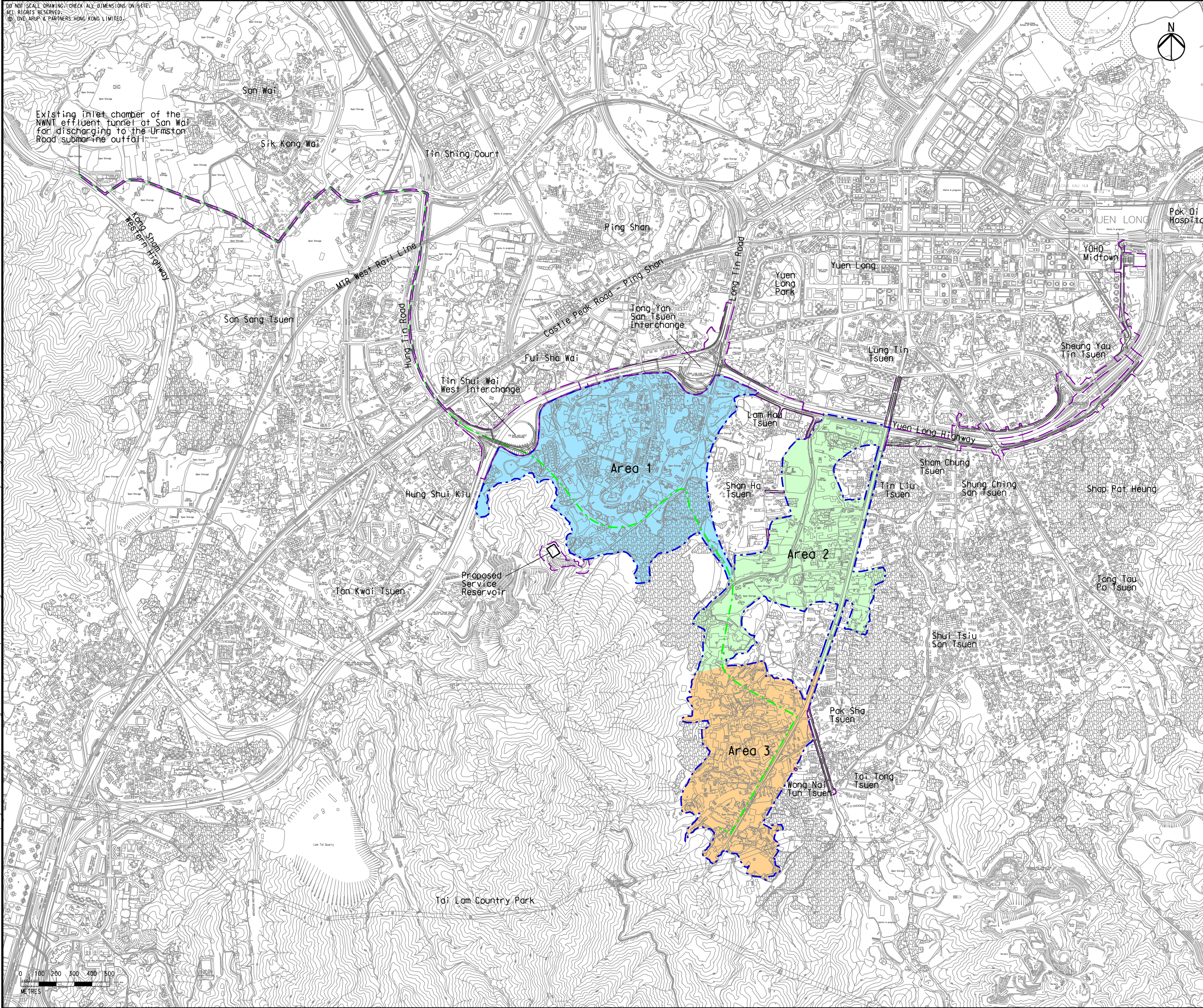


DO NOT SCALE DRAWING. CHECK ALL DIMENSIONS ON SITE.
ALL RIGHTS RESERVED.
© 2016 ARUP & PARTNERS HONG KONG LIMITED.

Existing inlet chamber of the
NWNT effluent tunnel at San Wai
for discharging to the Urmston
Road submarine outfall



- Legend
- Potential Development Area (PDA)
 - Works Boundary Outside PDA
 - New Sewer from YLS STW to the Existing Inlet Chamber of the NWNT Effluent Tunnel at San Wai for Discharging to the Urmston Road Submarine Outfall
 - Area 1
 - Area 2
 - Area 3



B	SECOND ISSUE	GL	07/17
A	FIRST ISSUE	GL	05/17
Rev	Description	By	Date
Consultant			
ARUP			
Contract No. and Title			
Agreement No. CE 35/2012(CE)			
Planning and Engineering Study for Housing Sites in Yuen Long South - Investigation			
Drawing title			
Location of Project			
Drawing no. Figure 2.1			Rev. B
Drawn GL	Date 07/17	Checked FC	Approved FC
Scale 1:20000 @A3	Status	PRELIMINARY	

COPYRIGHT RESERVED



土木工程拓展署
Civil Engineering and
Development Department



規劃署
Planning
Department