

Minimising Air Quality and Noise Impacts

- The Employment Belt at TYST will provide local employment opportunities and hence reduce the need for commuting traffic to urban areas, and the freight traffic would not need to travel through the residential neighborhood in the PDA
- Residential landuses within the PDA are provided with sufficient setback distance from YLH, and other roads within the PDA



Protection of Watercourses of Higher Ecological Value

- Endemic crab species have been identified at 3 lower sections of the watercourses within the PDA
- These watercourses have been conserved and buffers of 15m on both sides of the watercourses have been zoned as "GB" to protect the habitat of endemic crab species



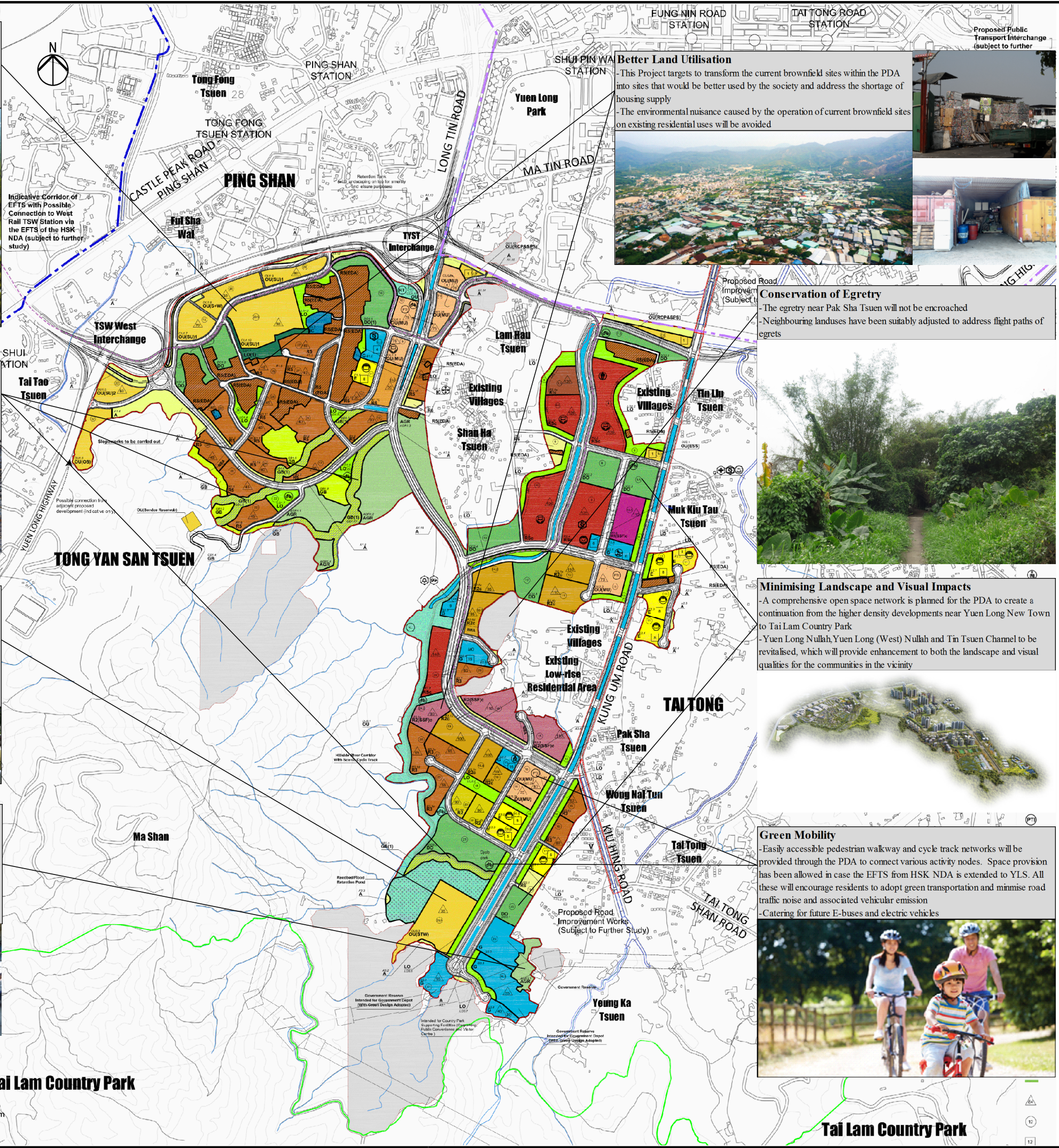
Protection of Deep Bay Water Quality & Conservation of Water Consumption

- There will be no increase in pollution loading to the Deep Bay WCZ
- Unsewered areas within PDA will be improved with sewer to collect the sewage to YLS STW
- The Project targets to conserve water consumption as much as practicable.
- Reclaimed water will be reused for non-potable uses such as toilet flushing for the PDA and adjacent developments. The surplus TSE will be conveyed and discharged at North Western WCZ



Removing Existing Odour Sources

- Existing livestock farms within the PDA (incl 3 pig farms and 3 chicken farms) are creating certain odour nuisance to neighbouring residential areas
- Other than the chicken livestock farm at the south, all those remaining livestock farms will be removed. This will significantly improve the existing odour conditions
- For the only chicken farm at the south that would be retained, the neighbouring landuses have been suitably adjusted to ensure cumulative impacts (eg from STW) would comply with the requirements



A Better Land Utilisation

<p>- This Project targets to transform the current brownfield sites within the PDA into sites that would be better used by the society and address the shortage of housing supply</p> <p>-The environmental nuisance caused by the operation of current brownfield sites on existing residential uses will be avoided</p>



Conservation of Egretry

- The egretty near Pak Sha Tsuen will not be encroached
- Neighbouring landuses have been suitably adjusted to address flight paths of egrets



Minimising Landscape and Visual Impacts

- A comprehensive open space network is planned for the PDA to create a continuation from the higher density developments near Yuen Long New Town to Tai Lam Country Park
- Yuen Long Nullah, Yuen Long (West) Nullah and Tin Tsuen Channel to be revitalised, which will provide enhancement to both the landscape and visual qualities for the communities in the vicinity



Green Mobility

- Easily accessible pedestrian walkway and cycle track networks will be provided through the PDA to connect various activity nodes. Space provision has been allowed in case the EFTS from HSK NDA is extended to YLS. All these will encourage residents to adopt green transportation and minimise road traffic noise and associated vehicular emission
- Catering for future E-buses and electric vehicles



B	SECOND ISSUE	GL	07/17
A	FIRST ISSUE	GL	05/17
Rev	Description	By	Date

Consultant	
------------	--

ARUP

Contract No. and Title

Agreement No. CE 35/2012(CE)

Planning and Engineering Study for Housing Sites in Yuen Long South - Investigation

Drawing title

Environmental Initiatives

Drawing no.		Rev.	
Figure 2.4		B	
Drawn GL	Date 07/17	Checked FC	Approved FC
Scale AS SHOWN		Status PRELIMINARY	

COPYRIGHT RESERVED



土木工程拓展署
Civil Engineering and
Development Department



規劃署
Planning
Department