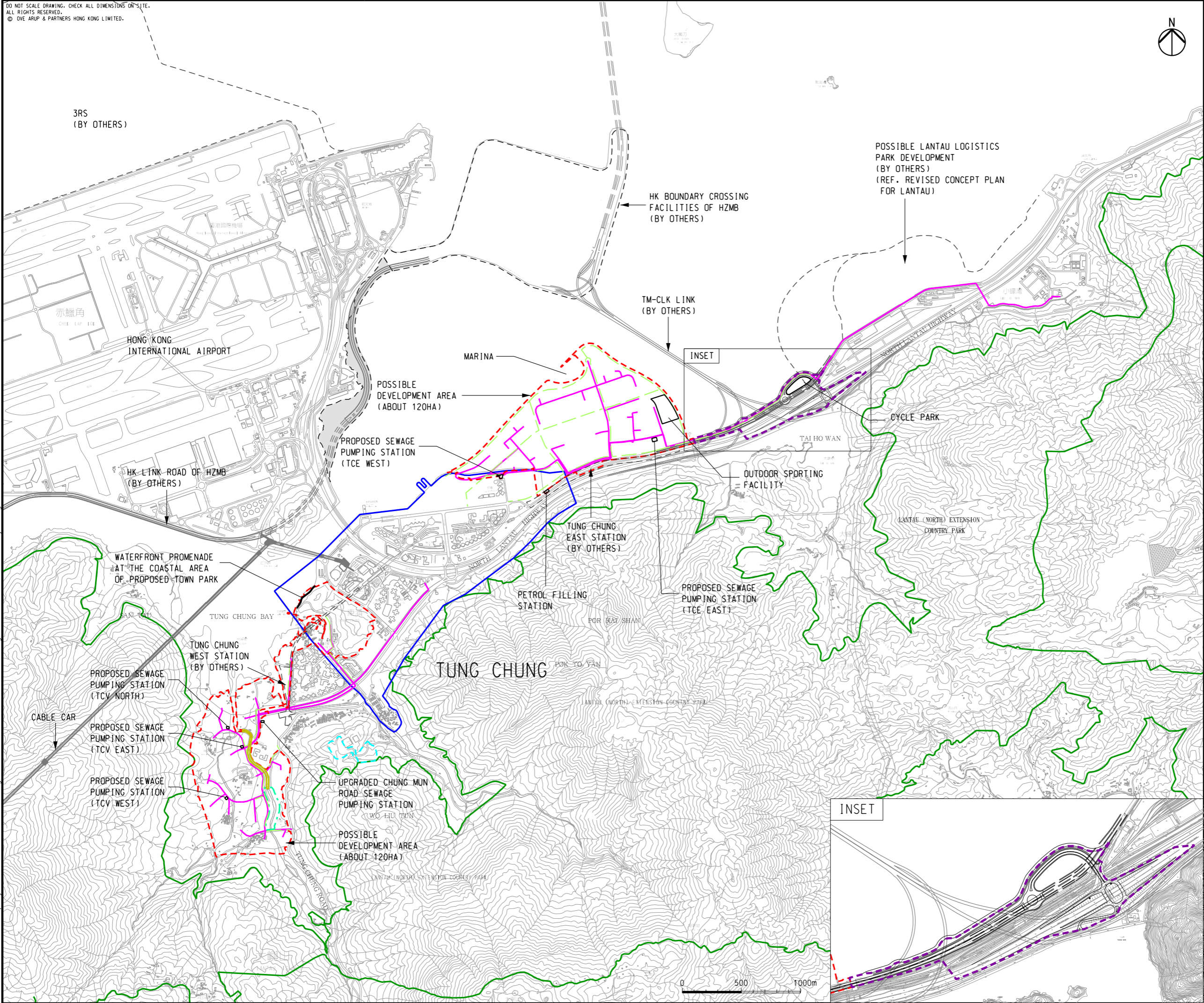


DO NOT SCALE DRAWING. CHECK ALL DIMENSIONS ON-SITE.
ALL RIGHTS RESERVED.
© OVE ARUP & PARTNERS HONG KONG LIMITED.



- LEGEND
- PROJECT COMPONENT
- POSSIBLE DEVELOPMENT AREA
 - WORKS AREA FOR ROAD P1 (TUNG CHUNG - TAI HO SECTION)
 - WORKS AREA FOR SERVICE RESERVOIR
 - OTHER PROJECT ELEMENTS
 - PROPOSED GRAVITY SEWER / RISING MAIN
 - RE-VITALIZATION WORKS ALONG CHANNELIZED SECTION OF TUNG CHUNG STREAM (PARTLY PROPOSED AS RIVER PARK)
 - PROPOSED RIVER PARK IN THE LAND ADJACENT TO THE IMMEDIATE UPSTREAM OF THE CHANNELIZED SECTION OF TUNG CHUNG STREAM UP TO SHEK MUN KAP
 - CYCLE TRACK NETWORK (ABOUT 12KM LONG IN TOTAL LENGTH)
- OTHERS
- COUNTRY PARK
 - TUNG CHUNG TOWN CENTRE AREA (OUTLINE ZONING PLAN NO. S/I-TCTC/18)

D	FOURTH ISSUE	GL	10/15
C	THIRD ISSUE	GL	08/15
B	SECOND ISSUE	GL	06/15
A	FIRST ISSUE	GL	04/15
Rev	Description	By	Date
Consultant			
ARUP			
Project title			
Tung Chung New Town Extension			
Drawing title			
Location of Project			
Drawing no.			Rev.
Figure 1.1			D
Drawn	Date	Checked	Approved
GL	10/15	LK	FC
Scale	1:30000 @A3	Status	PRELIMINARY
COPYRIGHT RESERVED			
CEDD 土木工程拓展署 Civil Engineering and Development Department			