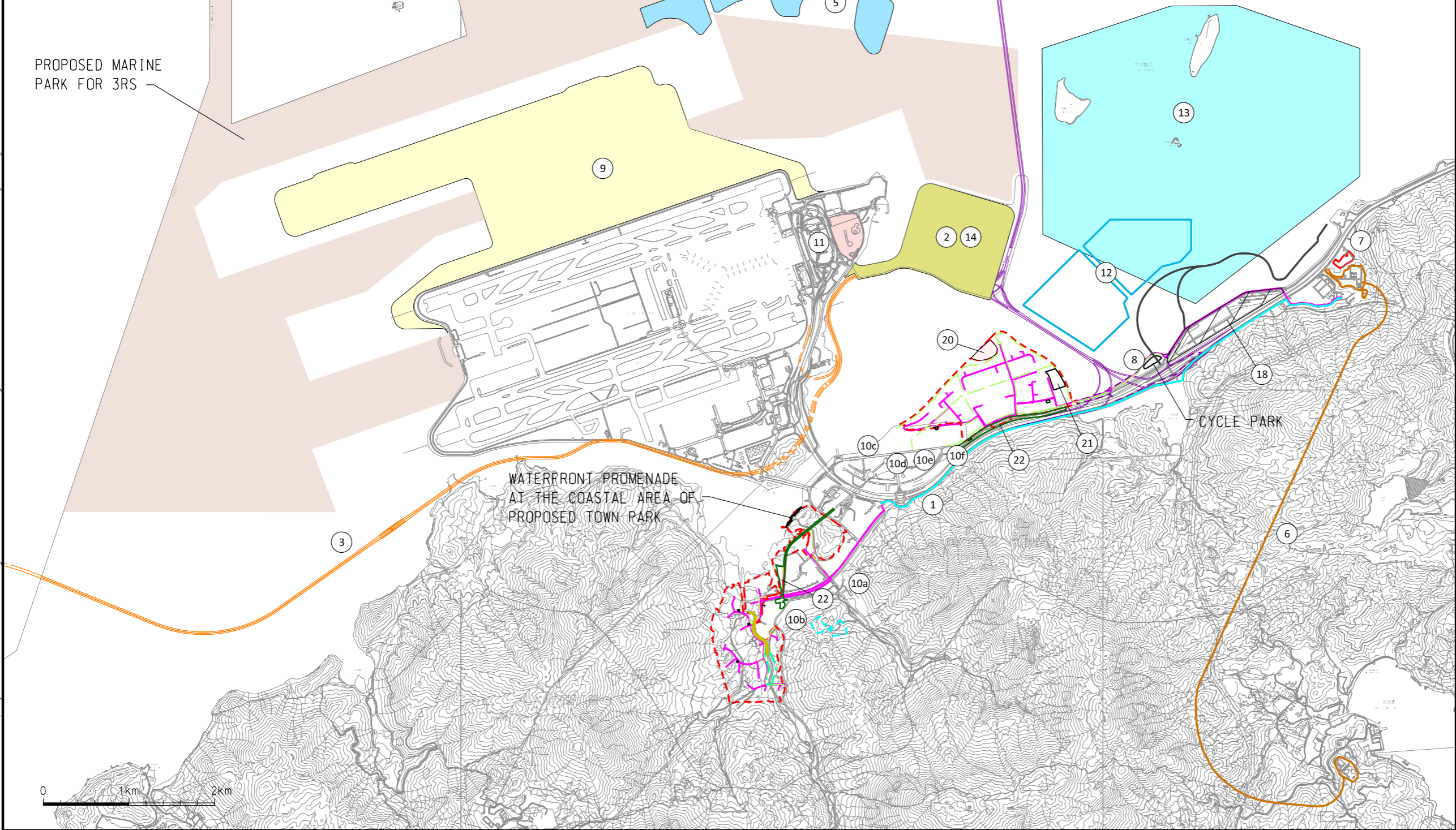



ID	Description
1	Construction of additional sewage rising mains and rehabilitation of the existing sewage rising main between Tung Chung and Siu Ho Wan
2	Hong Kong - Zhuhai - Macao Bridge Hong Kong Boundary Crossing Facilities (HZMB HKBCF, being constructed)
3	Hong Kong - Zhuhai - Macao Bridge Hong Kong Link Road (HZMB HKLR, being constructed)
4	Tuen Mun - Chek Lap Kok Link (TM-CLKL, being constructed)
5	Proposed New Contaminated Mud Marine Disposal Facility at Airport East / East Sha Chau Area
6	Integration of Siu Ho Wan and Silver Mine Bay Water Treatment Works
7	Organic Waste Treatment Facilities Phase 1 (OWTF)
8	Possible Lantau Logistics Park
9	Expansion of Hong Kong International Airport into a Three-Runway System (3RS)
10a	Planned residential developments at Tung Chung Area 27
10b	Planned residential developments at Tung Chung Area 39
10c	Planned hotel development at Tung Chung Area 53
10d	Planned residential developments at Area 54
10e	Planned residential developments at Tung Chung Area 55
10f	Planned residential developments at Tung Chung Area 56
11	North Commercial District (NCD) of Hong Kong International Airport
12	Dredging, Management and Capping of Contaminated Sediment Disposal Facility to the South of The Brothers
13	Proposed The Brothers Marine Park
14	Topside Development at Hong Kong Boundary Crossing Facilities Island of HZMB
15	Cumulative Environmental Impact Assessment Study for the Three Potential Nearshore Reclamation Sites in the Western Waters of Hong Kong
16	Harbour Area Treatment Scheme (HATS) Stage 2A
17	Providing Sufficient Water Depth at Kwai Tsing Container Basin and its Approach Channel (KTCB)
18	Cross Boundary Hub in Siu Ho Wan
19	Proposed Leisure and Entertainment Node at Sunny Bay
20	Proposed marina at TCE
21	Proposed sports ground at TCE
22	Proposed railway stations at TCE and TCW



LEGEND	
	POSSIBLE DEVELOPMENT AREA
	WORKS AREA FOR ROAD P1 (TUNG CHUNG - TAI HO SECTION)
	WORKS AREA FOR SERVICE RESERVOIR
	OTHER PROJECT ELEMENTS
	PROPOSED GRAVITY SEWER / RISING MAIN
	RE-VITALIZATION WORKS ALONG CHANNELIZED SECTION OF TUNG CHUNG STREAM (PARTLY PROPOSED AS RIVER PARK)
	PROPOSED RIVER PARK IN THE LAND ADJACENT TO THE IMMEDIATE UPSTREAM OF THE CHANNELIZED SECTION OF TUNG CHUNG STREAM UP TO SHEK MUN KAP
	CYCLE TRACK NETWORK (ABOUT 12KM LONG IN TOTAL LENGTH)

E	FIFTH ISSUE	GL	11/15
D	FOURTH ISSUE	GL	09/15
C	THIRD ISSUE	GL	08/15
B	SECOND ISSUE	GL	06/15
Rev	Description	By	Date
Consultant			
ARUP			
Project title			
Tung Chung New Town Extension			
Drawing title			
Locations of Concurrent Projects			
Drawing no.			Rev.
Figure 2.2			E
Drawn GL	Date 11/15	Checked LK	Approved FC
Scale 1:50000 @A3		Status PRELIMINARY	
COPYRIGHT RESERVED			
<div><div>土木 工程 拓展 署 Civil Engineering and Development Department</div></div>			