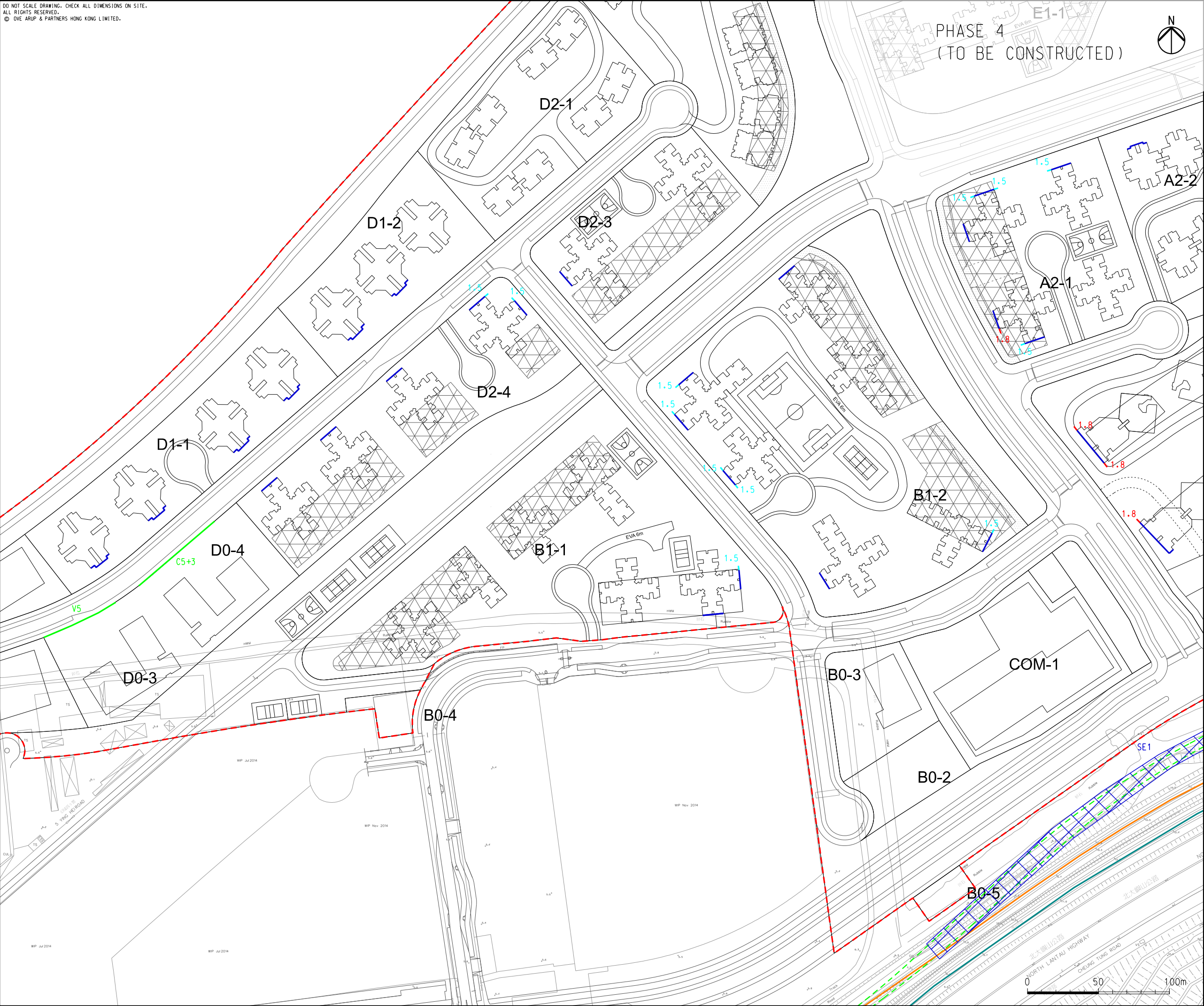


DO NOT SCALE DRAWING. CHECK ALL DIMENSIONS ON SITE.
ALL RIGHTS RESERVED.
© OVE ARUP & PARTNERS HONG KONG LIMITED.



- LEGEND
- POSSIBLE DEVELOPMENT AREA
 - AIRPORT EXPRESS LINE
 - TUNG CHUNG LINE
 - PROPOSED ALIGNMENT FOR TUNG CHUNG EAST STATION
 - FACADE WITH NO OPENABLE WINDOWS
 - SCHOOL BOUNDARY WALL (cM HIGH)
 - SCHOOL BOUNDARY WALL (bM HIGH + cM CANTILEVER)
 - ARCHITECTURAL FIN (1.5M LONG)
 - ARCHITECTURAL FIN (1.8M LONG)
 - PROPOSED SEMI-ENCLOSURE (TENTATIVE SEMI-ENCLOSURE TO BE REVIEWED BY RAIL OPERATOR DURING THEIR SCHEDULE 2 EIA)

C	THIRD ISSUE	GL	09/15
B	SECOND ISSUE	GL	07/15
A	FIRST ISSUE	GL	04/15
Rev	Description	By	Date

Consultant

ARUP

Project title

**Tung Chung
New Town Extension**

Drawing title

**Mitigation Measures for
Road Traffic Noise and
Railway Noise at 2027
(Sheet 4 of 5)**

Drawing no.	Figure 6.3c	Rev.	C
Drawn	Date	Checked	Approved
GL	09/15	LK	FC
Scale	1:2500 @A3	Status	PRELIMINARY

COPYRIGHT RESERVED

CEDD 土木工程拓展署
Civil Engineering and
Development Department