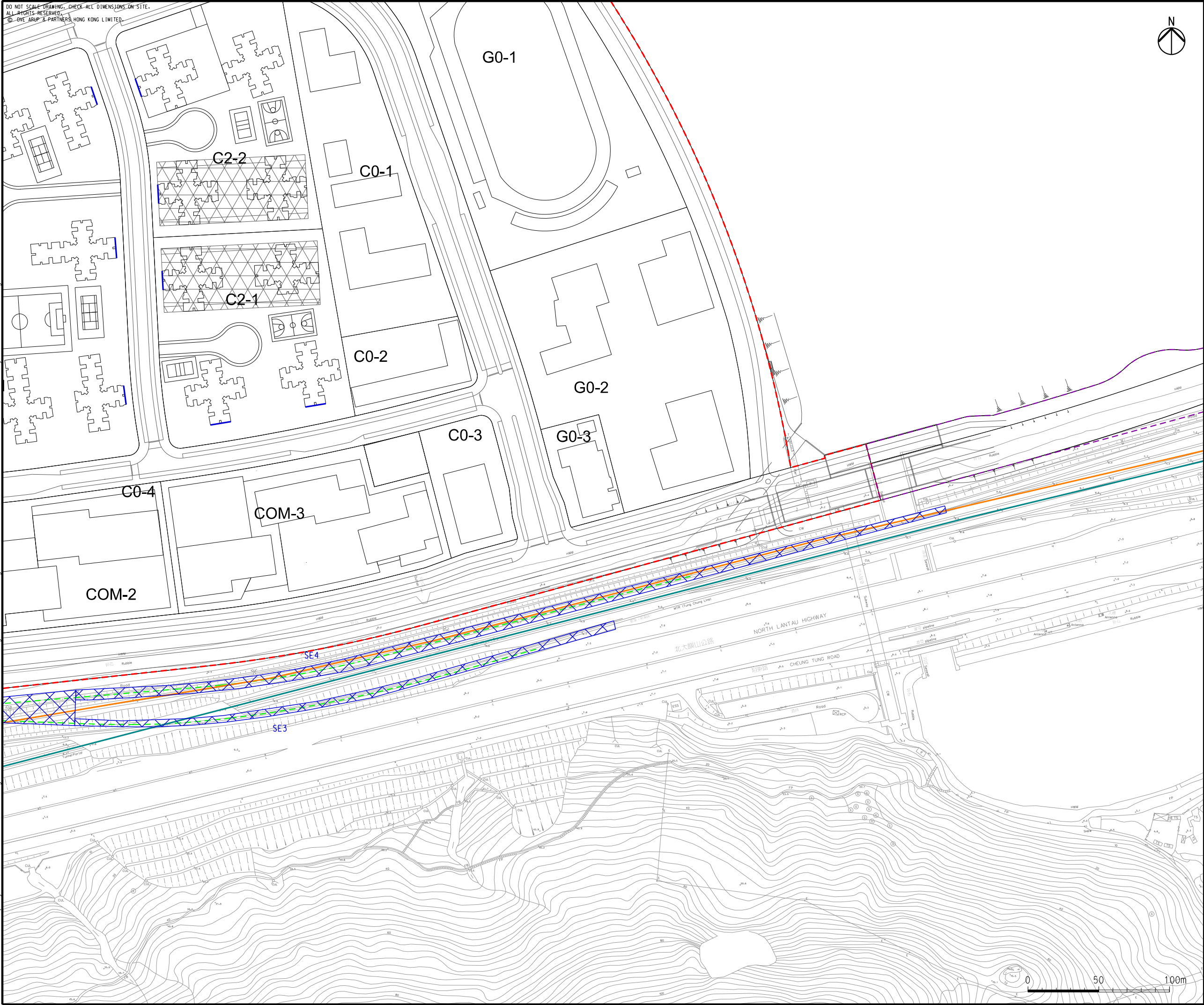


Printed by : 10/2/2015  
Filename : G:\env\project\2198\4-70\13 Drawing Deliverables\33 EM&A Manual Figure 6.4a - Mitigation Measures for Road Traffic Noise and Railway Noise at 2045.dgn



DO NOT SCALE DRAWING. CHECK ALL DIMENSIONS ON SITE.  
ALL RIGHTS RESERVED.  
© BYE ARUP & PARTNERS, HONG KONG LIMITED.

LEGEND

- POSSIBLE DEVELOPMENT AREA
- WORKS AREA FOR ROAD P1 (TUNG CHUNG - TAI HO SECTION)
- AIRPORT EXPRESS LINE
- TUNG CHUNG LINE
- PROPOSED ALIGNMENT FOR TUNG CHUNG EAST STATION
- FACADE WITH NO OPENABLE WINDOWS
- PROPOSED SEMI-ENCLOSURE (TENTATIVE SEMI-ENCLOSURE TO BE REVIEWED BY RAIL OPERATOR DURING THEIR SCHEDULE 2 EIA)

C	THIRD ISSUE	GL	09/15
B	SECOND ISSUE	GL	07/15
A	FIRST ISSUE	GL	04/15
Rev	Description	By	Date

Consultant

**ARUP**

Project title

**Tung Chung  
New Town Extension**

Drawing title

**Mitigation Measures for  
Road Traffic Noise and  
Railway Noise at 2045  
(Sheet 2 of 6)**

Drawing no. **Figure 6.4a** Rev. **C**

Drawn GL	Date 09/15	Checked LK	Approved FC
Scale 1:2500 @A3	Status <b>PRELIMINARY</b>		

COPYRIGHT RESERVED

土木工程拓展署  
Civil Engineering and  
Development Department