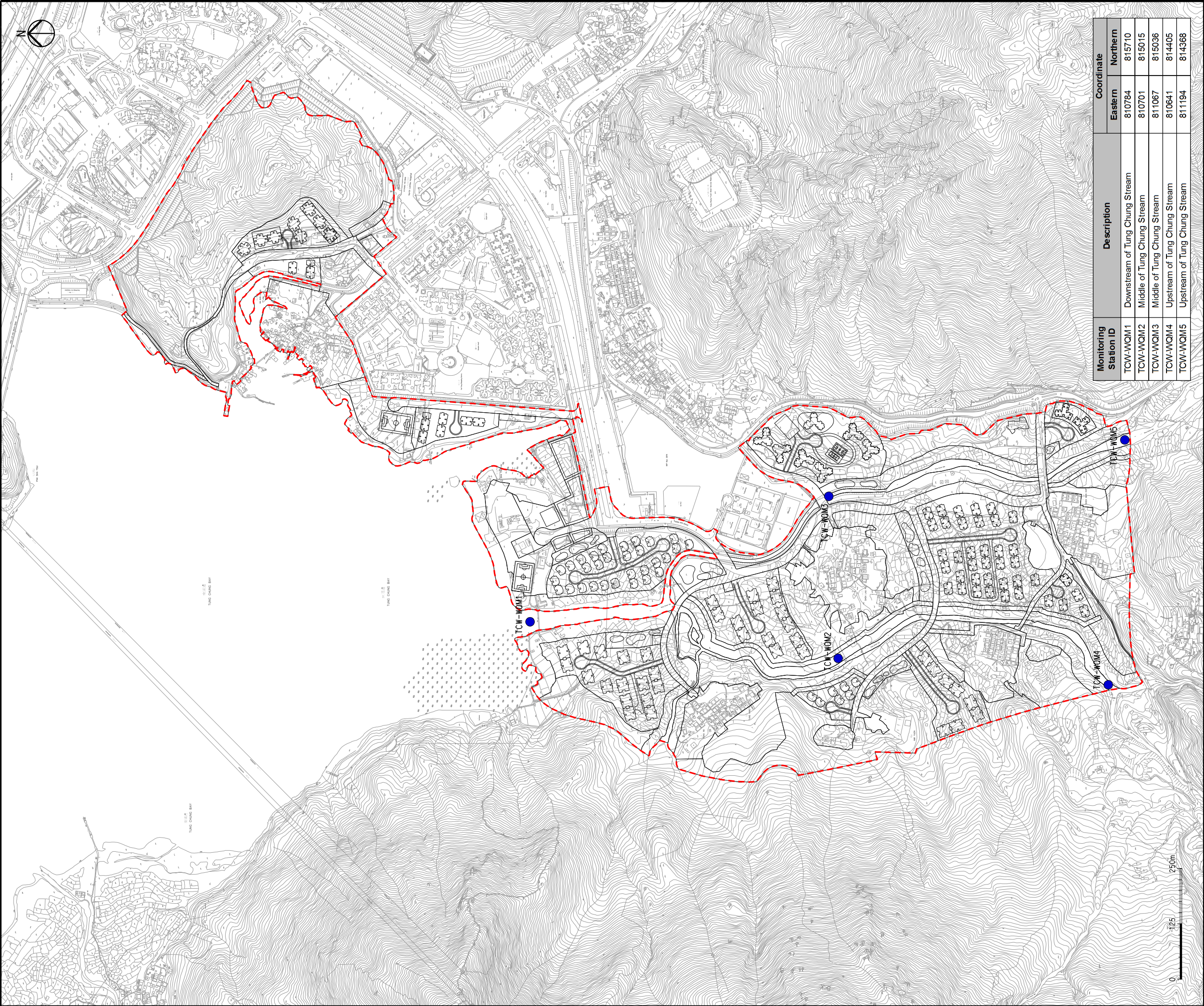


Printed by : 9/21/2015
Filename : G:\env\project\219844-70\13 Drawing Deliverables\33 EM&A Manual Figure 7.1a - Locations of Water Quality Monitoring Stations.dgn



Monitoring Station ID	Description	Coordinate	
		Eastern	Northern
TCW-WQM1	Downstream of Tung Chung Stream	810784	815710
TCW-WQM2	Middle of Tung Chung Stream	810701	815015
TCW-WQM3	Middle of Tung Chung Stream	811067	815036
TCW-WQM4	Upstream of Tung Chung Stream	810641	814405
TCW-WQM5	Upstream of Tung Chung Stream	811194	814368

- LEGEND
- POSSIBLE DEVELOPMENT AREA
 - WATER QUALITY MONITORING STATION

D	FOURTH ISSUE	GL	09/15
C	THIRD ISSUE	GL	08/15
B	SECOND ISSUE	GL	07/15
A	FIRST ISSUE	GL	05/15
Rev	Description	By	Date

Consultant

ARUP

Project title

Tung Chung
New Town Extension

Drawing title

Locations of Water Quality
Monitoring Station
(Sheet 2 of 2)

Drawing no. **Figure 7.1a** Rev. **D**

Drawn GL	Date 09/15	Checked LK	Approved FC
Scale AS SHOWN	Status PRELIMINARY		

COPYRIGHT RESERVED



土木工程拓展署
Civil Engineering and
Development Department