



***Installation of One Additional
Gas-fired Generation Unit
(CCGT Unit No. 1) at the Black
Point Power Station***

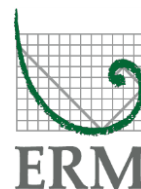
Monthly EM&A Report No.20

14 August 2018

Environmental Resources Management

2507, 25/F One Harbourfront
18 Tak Fung Street
Hung Hom, Kowloon, Hong Kong
Telephone 2271 3000
Facsimile 2723 5660

www.erm.com



**Installation of One Additional Gas-fired Generation Unit (CCGT Unit No. 1)
at the Black Point Power Station
Environmental Certification Sheet
EP-507/2016/A and FEP-02/507/2016/A**

Reference Document/Plan

Document/Plan to be Certified/-Verified:	Monthly EM&A Report No.20
Date of Report:	14 August 2018
Date prepared by ET:	14 August 2018
Date received by IEC:	

Reference EM&A Manual/ EP Requirement

EP Condition:	Condition No. 3.2
Content:	<i>Monthly EM&A Reports</i>

Four hard copies and one electronic copy of the Monthly EM&A Reports shall be submitted to the Director within two weeks after the end of the reporting month. The submissions shall be certified by the ET Leader and verified by the IEC as complying with the relevant requirements as set out in the EM&A Manual before submission to the Director. Additional copies of the submission shall be provided upon request by the Director.

ET Certification

I hereby certify that the above referenced document/~~plan~~ complies with the above referenced condition of EP-507/2016/A and FEP-02/507/2016/A.

Dr Jasmine Ng,
Environmental Team Leader:



Date: 14 August 2018

IEC Verification

I hereby verify that the above referenced document/~~plan~~ complies with the above referenced condition of EP-507/2016/A and FEP-02/507/2016/A.

Mr Thomas Chan,
Independent Environmental Checker:



Date: 14 August 2018.






Installation of One Additional Gas-fired Generation Unit (CCGT Unit No. 1) at the Black Point Power Station

Monthly EM&A Report No.20

Environmental Resources Management

2507, 25/F One Harbourfront
18 Tak Fung Street
Hung Hom, Kowloon
Hong Kong
Telephone: (852) 2271 3000
Facsimile: (852) 2723 5660
E-mail: post.hk@erm.com
http://www.erm.com

Client:		Project No:			
Castle Peak Power Company Limited (CAPCO)		0368878			
Summary:		Date: 14 August 2018			
<p>This document presents the Monthly EM&A Report No.20 for the Installation of One Additional Gas-fired Generation Unit (CCGT Unit No. 1) at the Black Point Power Station (EP-507/2016/A; FEP-02/507/2016/A)</p>		Approved by:			
		 Dr Jasmine Ng Partner			
0	Monthly EM&A Report No.20	JH	JNG	JNG	14 Aug 18
Revision	Description	By	Checked	Approved	Date
<p>This report has been prepared by Environmental Resources Management the trading name of 'ERM Hong-Kong, Limited', with all reasonable skill, care and diligence within the terms of the Contract with the client, incorporating our General Terms and Conditions of Business and taking account of the resources devoted to it by agreement with the client.</p> <p>We disclaim any responsibility to the client and others in respect of any matters outside the scope of the above.</p> <p>This report is confidential to the client and we accept no responsibility of whatsoever nature to third parties to whom this report, or any part thereof, is made known. Any such party relies on the report at their own risk.</p>		<p>Distribution</p> <p><input checked="" type="checkbox"/> Internal</p> <p><input checked="" type="checkbox"/> Government</p> <p><input type="checkbox"/> Public</p> <div style="display: flex; justify-content: space-around; align-items: center;">   </div>			

CONTENTS

1	INTRODUCTION	1
1.1	PURPOSE OF THE REPORT	1
1.2	STRUCTURE OF THE REPORT	1
2	PROJECT INFORMATION	3
2.1	BACKGROUND	3
2.2	GENERAL SITE DESCRIPTION	3
2.3	CONSTRUCTION PROGRAMME AND ACTIVITIES	3
2.4	PROJECT ORGANISATION	4
2.5	STATUS OF ENVIRONMENTAL LICENCES, NOTIFICATION AND PERMITS	4
3	ENVIRONMENTAL MONITORING REQUIREMENT	6
3.1	WATER QUALITY MONITORING	6
4	IMPLEMENTATION STATUS OF THE ENVIRONMENTAL PROTECTION REQUIREMENTS	7
4.1	SUBMISSIONS UNDER THE PROJECT	7
4.2	MARINE VESSEL OPERATION	7
5	MONITORING RESULTS	9
5.1	WASTE MANAGEMENT	9
6	ENVIRONMENTAL SITE INSPECTION	10
7	ENVIRONMENTAL NON-CONFORMANCE	12
7.1	SUMMARY OF MONITORING EXCEEDANCE	12
7.2	SUMMARY OF ENVIRONMENTAL NON-COMPLIANCE	12
7.3	SUMMARY OF ENVIRONMENTAL COMPLAINT	12
7.4	SUMMARY OF ENVIRONMENTAL SUMMON AND SUCCESSFUL PROSECUTION	12
8	UPCOMING WORKS FOR THE NEXT REPORTING PERIOD	13
8.1	CONSTRUCTION ACTIVITIES FOR THE COMING MONTH	13
8.2	CONSTRUCTION PROGRAMME FOR THE NEXT MONTH	13
9	CONCLUSIONS	14

LIST OF ANNEXES

Annex A	Indicative Location Plan of Key Project Components for CCGT Unit No.1
Annex B	Construction Programme for the Reporting Month and Coming Months
Annex C	Project Organization for EM&A Implementation
Annex D	Summary of Implementation Status of Environmental Mitigation
Annex E	Waste Flow Table

EXECUTIVE SUMMARY

The construction works of CCGT Unit No. 1 of the **Additional Gas-fired Generation Units Project at the Black Point Power Station** commenced on 5 December 2016. This is the twentieth monthly Environmental Monitoring and Audit (EM&A) report presenting the EM&A works carried out during the period from 1 to 31 July 2018 in accordance with the EM&A Manual and the requirements of EP-507/2016/A, FEP-01/507/2016 and FEP-02/507/2016/A. The application for surrender of the FEP (FEP-01/507/2016) was submitted by Chun Wo on 15 June 2018 and approved by EPD on 18 July 2018.

Summary of the Construction Works undertaken during the Reporting Month

The major construction works undertaken during the reporting month include:

Construction Activities undertaken

- Heat Recovery Steam Generator (HRSG) roof beams welding;
 - HRSG staircase tower erection;
 - HRSG modules lifting;
 - Condenser welding and installation;
 - Foundation and substructure works at Power Island;
 - Shaft construction works for cooling water system;
 - Superstructure works for Turbine Hall; and
 - Vessel operation for transport of equipment and materials.
-

Environmental Site Inspection

Joint weekly site inspections were conducted by representatives of the Contractors, CAPCO Project Team and ET on 5, 12, 19 and 26 July 2018. The representative of the IEC joined the site inspection on 26 July 2018. Details of the audit findings and implementation status are presented in *Section 6*.

Environmental Exceedance/Non-conformance/Complaint/Summons and Prosecution

No non-compliance event was recorded during the reporting month.

No complaint was received during the reporting period.

No summon or prosecution was received in this reporting period.

Upcoming Works for the Next Reporting Period

The major construction works to be undertaken in the next reporting month include:

Construction Activities to be undertaken

- Heat Recovery Steam Generator (HRSG) modules installation;
 - Condenser installation;
 - Barge unloading;
 - Heavy Lifting of Steam Turbine Drain Skid in Turbine Hall;
 - Oil filling for Generator Transformer;
 - Piping prefabrication and installation for Balance of Plant;
 - Foundation works for Intake, Pumping Station and Shafts;
 - Substructure & superstructure works for Turbine Hall, Pipe Bridge and Feedwater Platform; and
 - Vessel operation for transport of equipment and materials.
-

The Castle Peak Power Company Limited (CAPCO) is a joint venture between CLP Power Hong Kong Limited (CLP) and China Southern Power Grid Company Limited with CLP as the operator. ERM-Hong Kong, Limited (ERM) and Mott MacDonald Hong Kong Limited were appointed by CAPCO as the Environmental Team (ET) and the Independent Environmental Checker (IEC), respectively, to undertake the Environmental Monitoring and Audit (EM&A) activities for the installation of CCGT Unit No. 1 of the **Additional Gas-fired Generation Units Project at the Black Point Power Station (BPPS)** ("the Project").

1.1 *PURPOSE OF THE REPORT*

This is the twentieth EM&A report which summarises the audit findings during the reporting period from 1 to 31 July 2018.

1.2 *STRUCTURE OF THE REPORT*

Section 1 : Introduction

It details the purpose and structure of the report.

Section 2 : Project Information

It summarises the background and scope of the project, site description, project organisation and contact details, construction programme, construction works undertaken and status of the Environmental Permits/Licenses during the reporting period.

Section 3 : Environmental Monitoring Requirement

It briefly introduces the environmental monitoring requirements for the Project.

Section 4 : Implementation Status of the Environmental Protection Requirements

It summarises the implementation of environmental protection measures during the reporting period.

Section 5 : Monitoring Results

It summarises the monitoring results obtained in the reporting period.

Section 6 : Environmental Site Inspection

It summarises the audit findings of the weekly site inspections undertaken within the reporting period.

Section 7 : **Environmental Non-conformance**

It summarises any monitoring exceedance, environmental complaints and summons within the reporting period.

Section 8 : **Upcoming Works for the Next Reporting Period**

It summarises the construction activities and the forecast of environmental impact for the next reporting month.

Section 9 : **Conclusions**

2.1 BACKGROUND

The scope of the Project involves the phased construction and operation of up to two additional combined cycle gas turbine (CCGT) units (with an installed capacity of up to 600 MW each) at the BPPS. The additional generation units will be of CCGT configuration using natural gas as the primary fuel. It is a Designated Project under the *Environmental Impact Assessment Ordinance* (Cap. 499) (EIAO). The current EM&A Programme only includes the CCGT Unit No. 1.

An EIA of the Additional Gas-fired Generation Units Project was prepared in accordance with the *EIA Study Brief* (No. ESB-286/2015) and the *Technical Memorandum of the Environmental Impact Assessment Process* (EIAO-TM) and submitted under the EIAO in February 2016. Subsequent to the approval of the EIA (EIAO Register Number AEIAR-197/2016), an Environmental Permit (EP-507/2016) (EP) for CCGT Unit No. 1 was granted by the Director of Environmental Protection (DEP) on 14 June 2016. A Further Environmental Permit (FEP-01/507/2016) (FEP) was granted to the Contractor, Chun Wo Foundations Limited, of the CCGT Unit No. 1 on 9 December 2016. The application for surrender of the FEP (FEP-01/507/2016) was submitted by Chun Wo on 15 June 2018 and approved by EPD on 18 July 2018. An Application for Variation of an Environmental Permit (No. VEP-531/2017) was submitted to EPD on 28 July 2017 and the Variation of Environmental Permit (No. EP-507/2016/A) was granted on 21 August 2017. A FEP (FEP-02/507/2016/A) was granted to the Contractor, Leighton Contractors (Asia) Limited, of the CCGT Unit No. 1 on 13 September 2017.

2.2 GENERAL SITE DESCRIPTION

The proposed location for the Project is within the existing boundaries of the BPPS site. The size of the land reserved for the additional generation units and the associated facilities (the Project Site) is about 40,000 m². Construction works for CCGT Unit No. 1 is currently ongoing at the Project Site.

The location plan of key Project components for CCGT Unit No.1 is shown in *Annex A*.

2.3 CONSTRUCTION PROGRAMME AND ACTIVITIES

A summary of the major construction activities undertaken in this reporting period is shown in *Table 2.1*. The construction programme is presented in *Annex B*.

Table 2.1 *Summary of the Construction Activities Undertaken during the Reporting Month*

Construction Activities undertaken
<ul style="list-style-type: none"> • Heat Recovery Steam Generator (HRSG) roof beams welding; • HRSG staircase tower erection; • HRSG modules lifting; • Condenser welding and installation; • Foundation and substructure works at Power Island; • Shaft construction works for cooling water system; • Superstructure works for Turbine Hall; and • Vessel operation for transport of equipment and materials.

2.4 PROJECT ORGANISATION

The project organizational chart and contact details are shown in *Annex C*.

2.5 STATUS OF ENVIRONMENTAL LICENCES, NOTIFICATION AND PERMITS

A summary of the valid permits, licences, and/or notifications on environmental protection for this Project is presented in *Table 2.2*.

Table 2.2 *Summary of the Status of Valid Environmental Licence, Notification, Permit and Documentations*

Permit/ Licences/ Notification	Reference	Validity Period	Remarks
Environmental Permit	EP-507/2016	Throughout the Contract	Permit granted on 14 Jun 2016
Variation of Environmental Permit	EP-507/2016/A	Throughout the Contract	Permit granted on 21 Aug 2017
Further Environmental Permit	FEP-01/507/2016	Throughout the Contract	Permit granted on 9 Dec 2016; application for surrender of the FEP was submitted on 15 Jun 2018 and approved by EPD on 18 Jul 2018
Further Environmental Permit	FEP-02/507/2016/A	Throughout the Contract	Permit granted on 13 Sep 2017
Notification Pursuant to Section 3(1) of the <i>Air Pollution Control (Construction Dust) Regulation</i>	410023	Throughout the Contract	Notification received on 15 Nov 2016
	417935	Throughout the Contract	Notification received on 14 Jun 2017
	417676	Throughout the Contract	Notification received on 8 Jun 2017
Wastewater Discharge Licence	WT00028829-2017	To 31 Oct 2022	Licence granted on 25 Oct 2017
Chemical Waste Producer Registration	5213-432-C3243-13	Throughout the Contract	Registration approved on 9 Jan 2017; De-Register

Permit/ Licences/ Notification	Reference	Validity Period	Remarks
			Obsolete Chemical Waste Producer Registration submitted 15 Jun 2018
	5211-432-L2954-02	Throughout the Contract	Registration approved on 4 Jul 2017
	5214-421-K3324-01	Throughout the Contract	Registration approved on 6 Jul 2018
Billing Account for Disposal of Construction Waste	7026814	Throughout the Contract	Approved on 30 Dec 2016; application of closure of the billing account submitted on 15 Jun 2018
	7028155	Throughout the contract	Approved on 23 Jun 2017; application of closure of the billing account submitted on 15 Jun 2018
	7028380	Throughout the contract	Approved on 26 Jul 2017
	7029093	Throughout the contract	Approved on 19 Oct 2017
Construction Noise Permit	GW-RW0213-18	08 Jun 2018 – 22 Nov 2018	Permit granted on 06 Jun 2018
	GW-RW0247-18	1 Jul 2018 – 31 Dec 2018	Permit granted on 25 Jun 2018

*3.1**WATER QUALITY MONITORING*

In accordance with the EM&A Manual, monitoring works is required at a frequency of once per week on first year of commissioning of the CCGT Unit No.1. The monitoring details including monitoring requirement, locations of monitoring stations will be confirmed and approved by EPD before commissioning of the CCGT Unit No.1.

4 IMPLEMENTATION STATUS OF THE ENVIRONMENTAL PROTECTION REQUIREMENTS

4.1 SUBMISSIONS UNDER THE PROJECT

The Contractors have implemented all the environmental mitigation measures and requirements as stated in the EIA Report, Environmental Permit (EP) and EM&A Manual for the installation of CCGT Unit No.1. The implementation status of the environmental mitigation measures for this Project during the reporting period is summarised in *Annex D*. The status of the required submissions under the EP and EM&A Manual for the Project is presented in *Table 4.1*.

Table 4.1 Status of Required Submission under the Project

EP Condition	Submission	Submission Date
Condition 3.2 under Environmental Permit No. EP-507/2016/A and FEP-02/507/2016/A.	19 th Monthly EM&A Report	13 Jul 2018

4.2 MARINE VESSEL OPERATION

Three vessels for transport of equipment and materials from Siemens were operated on 9 July 2018. In accordance with the *Vessel Control Plan* prepared for the Project under Condition 2.4 of the EP, an environmental briefing to vessel operators was conducted prior to the vessel operations. The environmental briefing has included the following content:

- Requirements under the EP and *Vessel Control Plan*;
- General education on local cetaceans;
- Predefined and regular marine travel routes for this Project;
- Vessel speed limit within designated areas and areas identified as high presence of Indo-Pacific humpback dolphin;
- Guidelines for safe vessel operation in the presence of cetaceans;
- Guidelines on effluent /wastewater handling from vessels to prevent avoidable water quality impacts; and
- Policy of no dumping of rubbish, food, oil, or chemicals from vessels.

Details of the monitoring method and procedures have been agreed with the IEC before implementation and communicated with the vessel operators. Warning will be noticed to the vessel operators if the predefined and regular marine travel route is not followed. The record of marine travel routes of the

works vessels was provided by the vessel operators for inspection and monitoring purposes. There was no major observation and no non-compliance was recorded.

5.1

WASTE MANAGEMENT

The waste generated from this Project includes inert construction and demolition (C&D) materials, and non-inert C&D materials. Non-inert C&D materials are made up of general refuse and recyclable wastes such as plastics and paper/cardboard packaging waste. Steel materials generated from the project are also grouped into non-inert C&D materials as the materials were not disposed of with other inert C&D materials. With reference to relevant handling records and trip tickets of this Project, the quantities of different types of waste generated in the reporting month are summarised in *Table 5.1*. Details of waste management data are presented in *Annex E*.

Table 5.1 Quantities of Waste Generated from the Project

Reporting Month	Quantity					
	Inert C&D Materials (a) (b)	Chemical Waste (d)	Non-inert C&D Materials			
			General Refuse (c)	Recycled materials		
				Paper/card board	Plastics	Metals
	(in '000m ³)	(in'000 kg)	(in '000m ³)	(in'000 kg)	(in'000 kg)	(in'000 kg)
July 2018	3.488	0	0.057	0	0	2.880
Notes:						
(a)	Inert C&D materials include bricks, concrete, building debris, rubble and excavated spoil.					
(b)	The inert C&D materials generated from the Project were sent to Tuen Mun Area 38 Fill Bank during the reporting month.					
(c)	The general refuse generated from the Project was sent to WENT landfill during the reporting month.					
(d)	Chemical waste includes waste oil. It is assumed density of waste oil to be 0.8 kg/L.					
(e)	The cut-off date for waste management data is 31 July 2018.					

Joint weekly site inspections were conducted by representatives of the Contractors, CAPCO Project Team and ET on 5, 12, 19 and 26 July 2018. The representative of the IEC joined the site inspection on 26 July 2018. No non-compliance was recorded during the site inspections.

Findings and recommendations for the site inspection in this reporting month are summarised as follows:

5 July 2018

There was no major site observation.

12 July 2018

The Contractor (Leighton) was reminded to:

- enhance water spraying along the haul roads at Power Island;
- enhance wheel-washing and drainage pipes for collection of wastewater for treatment before discharge at Shaft A works area; and
- enhance the surface drainage network and bunding along the boundary at works area facing Chimney Road and at Shaft A.

19 July 2018

There was no major site observation.

26 July 2018

The Contractor (Leighton) was reminded to:

- remove the water accumulated in the drip tray of an air compressor located in the Shaft F works area;
- remove the stagnant water at the Power Island works area;
- enhance the surface drainage network and bunding along the boundary at Shaft A; and
- provide water spraying during excavation works.

Regarding the planter audit, CAPCO was recommended to:

- increase irrigation frequency;
- apply pesticides to BPT758;
- conduct close monitoring for BPT919; and
- remove shrubs and grass near the planters.

All follow-up actions requested by ET and IEC during the site inspections were undertaken as reported by CAPCO and the Contractors. The abovementioned environmental issues had been addressed and mitigated during the reporting period.

7 *ENVIRONMENTAL NON-CONFORMANCE*

7.1 *SUMMARY OF MONITORING EXCEEDANCE*

No environmental monitoring is required during construction of CCGT Unit No. 1.

7.2 *SUMMARY OF ENVIRONMENTAL NON-COMPLIANCE*

No non-compliance event was recorded during the reporting month.

7.3 *SUMMARY OF ENVIRONMENTAL COMPLAINT*

No environmental complaint was received during the reporting month.

7.4 *SUMMARY OF ENVIRONMENTAL SUMMON AND SUCCESSFUL PROSECUTION*

No summon or prosecution was received during the reporting month.

8.1 CONSTRUCTION ACTIVITIES FOR THE COMING MONTH

Works to be undertaken in the next reporting month are summarised in *Table 8.1*.

Table 8.1 Construction Works to be undertaken in the Next Reporting Month

Construction Activities to be undertaken
<ul style="list-style-type: none"> • Heat Recovery Steam Generator (HRSG) modules installation; • Condenser installation; • Barge unloading; • Heavy Lifting of Steam Turbine Drain Skid in Turbine Hall; • Oil filling for Generator Transformer; • Piping prefabrication and installation for Balance of Plant; • Foundation works for Intake, Pumping Station and Shafts; • Substructure & superstructure works for Turbine Hall, Pipe Bridge and Feedwater Platform; and • Vessel operation for transport of equipment and materials.

Potential environmental impacts arising from the above construction activities are mainly associated with dust, wastewater treatment and waste management.

8.2 CONSTRUCTION PROGRAMME FOR THE NEXT MONTH

The construction programme for the Project for the next reporting month is presented in *Annex B*.

This 20th monthly Environmental Monitoring and Audit (EM&A) Report presents the EM&A works undertaken during the period from 1 to 31 July 2018 in accordance with the EM&A Manual and the requirements of EP-507/2016/A, FEP-01/507/2016 and FEP-02/507/2016/A. The application for surrender of the FEP (FEP-01/507/2016) was submitted by Chun Wo on 15 June 2018 and approved by EPD on 18 July 2018.

Three vessels for transport of equipment and materials were operated during the reporting period and no non-compliance was recorded.

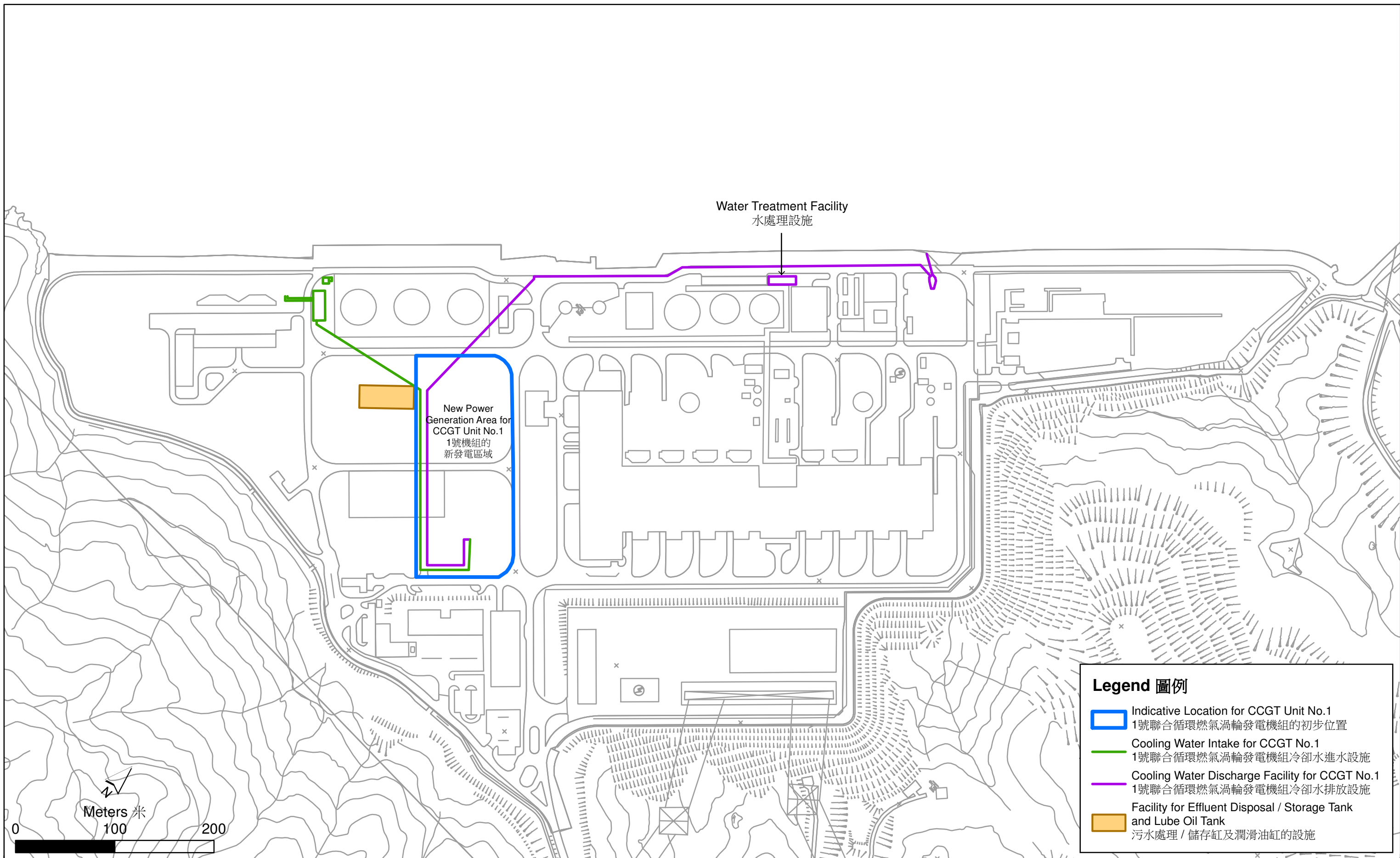
No non-compliance event was recorded during the reporting month.

No environmental complaint, summon or prosecution was received during the reporting month.

The Contractors have implemented possible and feasible mitigation measures to mitigate the potential environmental impacts during construction. The ET will continue to keep track of the EM&A programme to ensure compliance of environmental requirements and the effectiveness and efficiency of the mitigation measures implemented. If necessary, the Contractors will provide more mitigation measures to further alleviate the impacts.

Annex A

Works Area for CCGT Unit
No. 1 at the Black Point
Power Station



Annex A

Indicative Location Plan of Key Project Components for CCGT Unit No.1

File: T:\GIS\CONTRACT\0367751\Mxd\0367751_Indicative_Location_of_Key_Project_Components_bil.mxd
Date: 21/8/2017

**Environmental
Resources
Management**



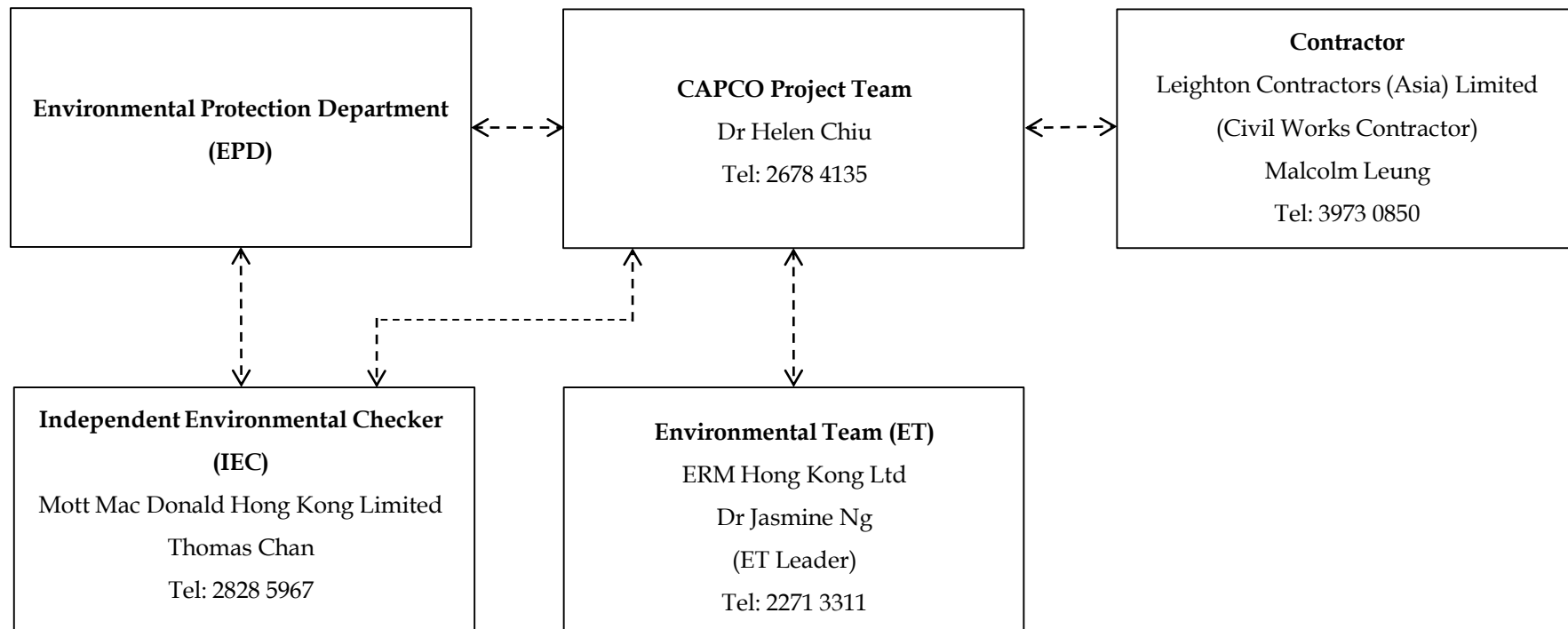
Annex B

Construction Programme for the Reporting Month and Coming Months

	Year 2018						Year 2019											
CCGT Unit No.1	7	8	9	10	11	12	1	2	3	4	5	6	7	8	9	10	11	12
Civil Works																		
Equipment Supply & Installation																		

Annex C

Project Organization for EM&A Implementation



Key
 ----- Line of Communication

Annex D

Summary of Implementation Status of Environmental Mitigation

Annex D - Environmental Mitigation Implementation Status for Additional CCGT Units Project at BPPS

Note:

- ✓ Compliance of Mitigation Measures
- <> Compliance of Mitigation but need improvement
- x Non-compliance of Mitigation Measures
- ▲ Non-compliance of Mitigation Measures but rectified by the Contractor
- Δ Deficiency of Mitigation Measures but rectified by the Contractor
- N/A Not Applicable in Reporting Period

EIA Reference	EM&A Reference	Recommended Environmental Protection Measures/ Mitigation Measures	Who implement the measures?	to When to implement the measures?	Implementation Status
Air Quality					
S4.10.1	S3.1	Impervious dust screen or sheeting will be provided to enclose scaffolding from the ground floor level of building for construction of superstructure of the new buildings.	Contractor	Construction Stage	✓
S4.10.1	S3.1	Impervious sheet will be provided for skip hoist for material transport.	Contractor	Construction Stage	✓
S4.10.1	S3.1	The area where dusty work takes place should be sprayed with water or a dust suppression chemical immediately prior to, during and immediately after dusty activities as far as practicable.	Contractor	Construction Stage	Δ
S4.10.1	S3.1	All dusty materials should be sprayed with water or a dust suppression chemical immediately prior to any loading, unloading or transfer operation.	Contractor	Construction Stage	✓
S4.10.1	S3.1	Dropping heights for excavated materials should be controlled to a practical height to minimise the fugitive dust arising from unloading.	Contractor	Construction Stage	✓
S4.10.1	S3.1	During transportation by truck, materials should not be loaded to a level higher than the side and tail boards, and should be dampened or covered before transport.	Contractor	Construction Stage	✓
S4.10.1	S3.1	Wheel washing device should be provided at the exits of the work sites. Immediately before leaving a construction site, every vehicle shall be washed to remove any dusty material from its body and wheels as far as practicable.	Contractor	Construction Stage	Δ

EIA Reference	EM&A Reference	Recommended Environmental Protection Measures/ Mitigation Measures	Who implement the measures?	to When to implement the measures?	Implementation Status
S4.10.1	S3.1	Road sections between vehicle-wash areas and vehicular entrance will be paved.	Contractor	Construction Stage	✓
S4.10.1	S3.1	Hoarding of not less than 2.4m high from ground level will be provided along the length of the Project Site boundary.	Contractor	Construction Stage	✓
S4.10.1	S3.1	Haul roads will be kept clear of dusty materials and will be sprayed with water so as to maintain the entire road surface wet at all times.	Contractor	Construction Stage	Δ
S4.10.1	S3.1	Temporary stockpiles of dusty materials will be either covered entirely by impervious sheets or sprayed with water to maintain the entire surface wet all the time.	Contractor	Construction Stage	✓
S4.10.1	S3.1	Stockpiles of more than 20 bags of cement, dry pulverised fuel ash and dusty construction materials will be covered entirely by impervious sheeting sheltered on top and 3-sides.	Contractor	Construction Stage	✓
S4.10.1	S3.1	All exposed areas will be kept wet always to minimise dust emission.	Contractor	Construction Stage	✓
S4.10.1	S3.1	Ultra-low-sulphur diesel (ULSD) will be used for all construction plant on-site, as defined as diesel fuel containing not more than 0.005% sulphur by weight) as stipulated in <i>Environment, Transport and Works Bureau Technical Circular (ETWB-TC(W)) No 19/2005</i> on Environmental Management on Construction Sites.	Contractor	Construction Stage	✓
S4.10.1	S3.1	The engine of the construction equipment during idling will be switched off.	Contractor	Construction Stage	✓
S4.10.1	S3.1	Regular maintenance of construction equipment deployed on-site will be conducted to prevent black smoke emission.	Contractor	Construction Stage	✓
S4.11.2	S3.2	It is recommended to continuously monitor and record the levels of air pollutants of the exhaust gas streams emitted from the stacks of the additional CCGT units by means of CEMS per the licence requirements. Continuous monitoring of ambient concentrations of SO ₂ , NO and NO ₂ will be continued at the current CLP's AQMSs.	CAPCO	Operational Stage	N/A
Hazard to Life					
S5.6	S4	All construction workers shall comply with CLP's safety policy and requirements.	Contractor	Construction Stage	✓

EIA Reference	EM&A Reference	Recommended Environmental Protection Measures/ Mitigation Measures	Who implement the measures?	to When to implement the measures?	Implementation Status
S5.6	S4	Method statements and risk assessments shall be prepared and safety control measures shall be in place before commencement of work.	Contractor	Construction Stage	✓
S5.6	S4	All work procedures shall be complied with the operating plant procedures or guidelines and regulatory requirements.	Contractor	Construction Stage	✓
S5.6	S4	Work permit system, on-site pre-work risk assessment and emergency response procedure shall be in place before commencement of work.	Contractor	Construction Stage	✓
S5.6	S4	All construction workers shall equip with appropriate PPE when working at the Project Site.	Contractor	Construction Stage	✓
S5.6	S4	Safety training and briefings shall be provided to all construction workers.	Contractor	Construction Stage	✓
S5.6	S4	All construction workers shall be under close site supervision.	Contractor	Construction Stage	✓
S5.6	S4	Regular site safety inspections shall be conducted during the construction phase of the Project.	Contractor	Construction Stage	✓
S5.13	S4	Ensure speed limit enforcement is specified in the contractor's method statement to limit the speed of construction vehicles on-site.	Contractor	Construction Stage	✓
S5.13	S4	Conduct speed checks to ensure enforcement of speed limits and to ensure adequate site access control.	Contractor	Construction Stage	✓
S5.13	S4	Provide escort for hydrogen and CO ₂ delivery vehicle drivers to ensure the right access route is used during the construction phases of the Project.	Contractor	Construction Stage	✓
S5.13	S4	A lifting plan, with detailed risk assessment, should be prepared and endorsed for heavy lifting of large equipment.	Contractor	Construction Stage	✓
S5.13	S4	Vehicle crash barrier, designed for the specific speed limit at the BPPS, should be provided between the construction site and the distillate oil storage facilities during 1 st CCGT unit construction phase. Also, a vehicle crash barrier is to be provided between the construction site and the 1 st CCGT unit during 2 nd CCGT unit construction phase.	Contractor	Construction Stage	✓

EIA Reference	EM&A Reference	Recommended Environmental Protection Measures/ Mitigation Measures	Who implement the measures?	to When to implement the measures?	Implementation Status
S5.13	S4	Any lifting operation near or over live equipment should be strictly minimised. If such operation cannot be avoided, lifting activities should be assessed, controlled and supervised. Adequate protection covers should also be provided on the existing BPPS facilities in case the operation of lifting equipment has a potential to impact live equipment at BPPS. Process isolation should be achieved in case that live equipment protection becomes impractical.	Contractor	Construction Stage	✓
S5.13	S4	The hydrogen road trailer and carbon dioxide road tanker delivery should follow alternative route, which is further from the construction site, during crane operation and movement of construction vehicles in the vicinity.	Contractor	Construction Stage	✓
S5.13	S4	Ensure that a hazardous area classification study is conducted and hazardous area maps are updated before the start of the construction activities to ensure ignition sources are controlled during both construction and operation phases.	Contractor	Construction Stage	✓
S5.13	S4	Ensure work permit system for hot work activities within the Project Site is specified in the contractor's method statement to minimise/ control ignition sources during construction phase.	Contractor	Construction Stage	✓
S5.13	S4	Ensure effective communication system/ protocol is in place between the construction contractors and operation staff.	Contractor	Construction Stage	✓
S5.13	S4	Ensure the Project Construction Emergency Response Plan is integrated with the Emergency Response Plan for the BPPS during construction phases. The plan should address stop work instructions to be promptly communicated to all construction workers performing hot works in case a confirmed flammable gas (natural gas and hydrogen) detection at the BPPS.	Contractor	Construction Stage	✓
S5.13	S4	Ensure that construction activities do not impede the functions of fire and gas detection system, fire protection system, muster areas, fire-fighting vehicle access and escape routes.	Contractor	Construction Stage	✓

EIA Reference	EM&A Reference	Recommended Environmental Protection Measures/ Mitigation Measures	Who implement the measures?	When to implement the measures?	Implementation Status
S5.13	S4	Ensure a Job Safety Analysis is conducted for construction activities of the Project during the construction phases, to identify and analyse hazards associated with the construction activities (e.g. lifting operations by cranes) onto the existing plant facilities and operations. Potential risks of the construction activities shall be assessed, and risk precautionary measures shall be implemented in Contractor's works procedures.	Contractor	Construction Stage	✓
Water Quality					
S 7.9	S6.5	Reduction of dredging rate from 4,000 m ³ per day to 740 m ³ per day for dredging at the seawater intake and discharge outfall	Contractor	Construction Stage	N/A
S 7.9	S6.5	Deploy floating type silt curtain around grab dredger	Contractor	Construction Stage	N/A
S 7.9	S6.5	Deploy single layer of floating type silt curtain surrounding coral colonies identify at dive survey Transect C (SR18). The silt curtain surrounding SR18 should provide sufficient clearance to the coral colonies such that no direct impact from the installation and anchoring of silt curtain would be inflicted on the coral colonies.	Contractor	Construction Stage	N/A
S 7.9	S6.5	The contractor shall regularly inspect the silt curtains and check that they are moored and marked to avoid danger to marine traffic. Regular inspection on the integrity of the silt curtain should be carried out by the contractor and any damage to the silt curtain shall be repaired by the contractor promptly. Relevant marine works shall only be undertaken when the repair is fixed to the satisfaction of the engineer.	Contractor	Construction Stage	N/A
S 7.9	S6.5	Construction of intake and outfall structure shall be conducted behind drained cofferdam.	Contractor	Construction Stage	N/A
S 7.9	S6.5	All vessels should be well maintained and inspected before use to limit any potential discharges to the marine environment.	Contractor	Construction Stage	N/A
S 7.9	S6.5	All vessels must have a clean ballast system.	Contractor	Construction Stage	N/A
S 7.9	S6.5	No discharge of sewage/grey wastewater should be allowed. Wastewater from potentially contaminated area on working vessels should be minimised and collected. These kinds of wastewater should be brought back to port and discharged at appropriate collection and treatment system.	Contractor	Construction Stage	✓
S 7.9	S6.5	No soil waste is allowed to be disposed overboard.	Contractor	Construction Stage	N/A

EIA Reference	EM&A Reference	Recommended Environmental Protection Measures/ Mitigation Measures	Who implement the measures?	When to implement the measures?	Implementation Status
S 7.9	S6.5	Silt removal facilities such as silt traps or sedimentation facilities will be provided to remove silt particles from runoff to meet the requirements of the TM standard under the WPCO. The design of silt removal facilities will be based on the guidelines provided in ProPECC PN 1/94. All drainage facilities and erosion and sediment control structures will be inspected on a regular basis and maintained to confirm proper and efficient operation at all times and particularly during rainstorms. Deposited silt and grit will be removed regularly.	Contractor	Construction Stage	Δ
S 7.9	S6.5	Earthworks to form the final surfaces will be followed up with surface protection and drainage works to prevent erosion caused by rainstorms.	Contractor	Construction Stage	N/A
S 7.9	S6.5	Appropriate surface drainage will be designed and provided where necessary.	Contractor	Construction Stage	Δ
S 7.9	S6.5	The precautions to be taken at any time of year when rainstorms are likely together with the actions to be taken when a rainstorm is imminent or forecasted and actions to be taken during or after rainstorms are summarised in Appendix A2 of ProPECC PN 1/94.	Contractor	Construction Stage	✓
S 7.9	S6.5	Oil interceptors will be provided in the drainage system where necessary and regularly emptied to prevent the release of oil and grease into the storm water drainage system after accidental spillages.	Contractor	Construction Stage	✓
S 7.9	S6.5	Temporary and permanent drainage pipes and culverts provided to facilitate runoff discharge, if any, will be adequately designed for the controlled release of storm flows.	Contractor	Construction Stage	Δ
S 7.9	S6.5	The temporary diverted drainage, if any, will be reinstated to the original condition when the construction work has finished or when the temporary diversion is no longer required.	Contractor	Construction Stage	✓
S 7.9	S6.5	Appropriate infiltration control, such as cofferdam wall, should be adopted to limit groundwater inflow to the excavation works areas in the Project site. Groundwater pumped out from excavation area should be discharged into the storm system via silt removal facilities.	Contractor	Construction Stage	✓

EIA Reference	EM&A Reference	Recommended Environmental Protection Measures/ Mitigation Measures	Who implement the measures?	When to implement the measures?	Implementation Status
S 7.9	S6.5	Appropriate numbers of portable toilets shall be provided by a licensed contractor to serve the construction workers over the construction site to prevent direct disposal of sewage into the water environment.	Contractor	Construction Stage	✓
S 7.9	S6.5	The contingency plan for the existing operation of the BPPS is considered sufficient for directing immediate response to any accidental spillage event.	CAPCO	Construction Stage	✓
S 7.9	S6.5	Mitigation measures required for maintenance dredging at seawater intake and discharge outfall would be the same as that recommended for construction phase dredging operation	Contractor	Construction Stage	N/A
S7.9 and S7.12	S6.2-S6.5	A water quality monitoring programme shall be implemented for the construction phase.	ET	Construction Stage	N/A
S7.9 and S7.12	S6.2-S6.5	To ensure compliance to the effluent standard, regular monitoring of effluent quality is recommended during normal operation. Furthermore, marine water monitoring at selected nearby WSRs during the first year of project commission are recommended to ensure compliance to WQO or other water quality criteria.	ET/ CAPCO	Operational Stage	N/A
Waste Management					
S8.5.1	Table 7.1	The Contractor must ensure that all the necessary waste disposal and marine dumping permits or licences are obtained prior to the commencement of the construction works.	Contractor	Construction Stage	✓
S8.5.1	S7.2	The contractor will open a billing account with EPD in accordance with the Waste Disposal (Charges for Disposal of Construction Waste) Regulation for the payment of disposal charges.	Contractor	Construction Stage	✓
S8.5.1	S7.2	A trip-ticket system will be established in accordance with <i>DEVB TC(W) No. 6/2010</i> to monitor the reuse of surplus excavated materials off-site and disposal of construction waste and general refuse at transfer facilities/ landfills, and to control fly-tipping.	Contractor	Construction Stage	✓

EIA Reference	EM&A Reference	Recommended Environmental Protection Measures/ Mitigation Measures	Who implement the measures?	When to implement the measures?	Implementation Status
S8.5.1	S7.2	A WMP as stated in the <i>PNAP ADV-19</i> for the amount of waste generated, recycled and disposed of (including the disposal sites) will be established and implemented during the construction phase as part of the Environmental Management Plan (EMP). The Contractor will be required to prepare the EMP and submits it to the Architect/ Engineer under the Contract for approval prior to implementation.	Contractor	Construction Stage	✓
S8.5.1	Table 7.1	The management of dredged/ excavated sediment management requirement from <i>PNAP ADV-21</i> will be incorporated in the Specification of the Contract Documents.	CAPCO/ Contractor	Construction Stage	✓
S8.5.1	S7.2	C&D materials will be segregated on-site into public fill and construction waste and stored in different containers or skips to facilitate reuse of the public fill and proper disposal of the construction waste. Specific areas of the Site will be designated for such segregation and storage if immediate use is not practicable. Prefabrication will be adopted as far as practicable to reduce the construction waste arisings.	Contractor	Construction Stage	✓
S8.5.1	S7.2	The Contractor will register as a chemical waste producer with the EPD. Chemical waste will be handled in accordance with the Code of Practice on the Packaging, Handling and Storage of Chemical Wastes.	Contractor	Construction Stage	✓
S8.5.1	S7.2	Containers used for storage of chemical wastes will: <ul style="list-style-type: none"> • Be suitable for the substance they are holding, resistant to corrosion, maintained in a good condition, and securely closed; • Have a capacity of less than 450 L unless the specifications have been approved by the EPD; and • Display a label in English and Chinese in accordance with instructions prescribed in Schedule 2 of the Regulations. 	Contractor	Construction Stage	✓
S8.5.1	S7.2	The storage area for chemical wastes will: <ul style="list-style-type: none"> • Be clearly labelled and used solely for the storage of chemical waste; • Be enclosed on at least 3 sides; 	Contractor	Construction Stage	✓

EIA Reference	EM&A Reference	Recommended Environmental Protection Measures/ Mitigation Measures	Who implement the measures?	When to implement the measures?	Implementation Status
		<ul style="list-style-type: none"> Have an impermeable floor and bunding, of capacity to accommodate 110% of the volume of the largest container or 20% by volume of the chemical waste stored in that area, whichever is the greatest; Have adequate ventilation; Be covered to prevent rainfall entering (water collected within the bund must be tested and disposed of as chemical waste, if necessary); and Be arranged so that incompatible materials are appropriately separated. 			
S8.5.1	S7.2	Chemical waste will be disposed of: <ul style="list-style-type: none"> Via a licensed waste collector; and To a facility licensed to receive chemical waste, such as the Chemical Waste Treatment Facility which also offers a chemical waste collection service and can supply the necessary storage containers. 	Contractor	Construction Stage	✓
S8.5.1	S7.2	General refuse will be stored in enclosed bins separately from construction and chemical wastes. The general refuse will be delivered to the WENT Landfill, separately from construction and chemical wastes, on a daily basis to reduce odour, pest and litter impacts.	Contractor	Construction Stage	✓
S8.5.1	S7.2	Recycling bins will be provided at strategic locations within the Project Site to facilitate recovery of recyclable materials (including aluminium can, waste paper, glass bottles and plastic bottles) from the Project Site. Materials recovered will be sold for recycling.	Contractor	Construction Stage	✓
S8.5.1	S7.2	To avoid any odour and litter impact, appropriate number of portable toilets will be provided for workers on-site.	Contractor	Construction Stage	✓
S8.5.1	S7.2	At the commencement of the construction works, training will be provided to workers on the concepts of site cleanliness and on appropriate waste management procedures, including waste reduction, reuse and recycling.	Contractor	Construction Stage	✓
Land Contamination					
S9.8	S8	During construction stage, good house-keeping practices shall be maintained by the Contractor to minimise the risk of land contamination due to construction activities, including but not limited to the followings:	Contractor	Construction Stage	Δ

EIA Reference	EM&A Reference	Recommended Environmental Protection Measures/ Mitigation Measures	Who implement the measures?	When to implement the measures?	Implementation Status
		<ul style="list-style-type: none"> Minimise the chemical stock within Project Site, only store the amount of chemicals needed; Designated chemical/ chemical waste storage shall be established on concrete paved ground, as far as practicable. Secondary containments shall be provided for storage of chemicals/ chemical wastes; Conduct regular maintenance and inspection on plants and equipment, particularly those involve the use of fuel, hydraulic oil or any sort of chemicals; and Divert rainfall and surface run-off around construction areas. 			
Ecology					
S10.9.2	S9.1	The vessel operators will be required to control and manage all effluent from vessels to prevent avoidable water quality impacts.	Contractor	Construction Stage	✓
S10.9.2	S9.1	A policy of no dumping of rubbish, food, oil, or chemicals will be strictly enforced. This will also be covered in the contractor briefings.	Contractor	Construction Stage	✓
S10.9.2	S9.1	The effects of construction of the Project on the water quality of the area will be reduced with the implementation of mitigation measures as described in the Water Quality Impact Assessment.	Contractor	Construction Stage	✓
S10.9.3	S9.1	All vessel operators working on the Project construction will be given a briefing, alerting them to the possible presence of dolphins in the marine works areas, and the guidelines for safe vessel operation in the presence of cetaceans. The use of high-speed vessels will be avoided as far as possible. All vessels used in this Project will be required to slow to 10 knots around the Project's marine works areas and area with high dolphin usage.	Contractor	Construction Stage	✓
S10.9.3	S9.1	The vessel operators of this Project will be required to use predefined and regular routes.	Contractor	Construction Stage	✓
S10.9.3	S9.2.1	A marine mammal exclusion zone within a radius of 250 m from dredger will be implemented during the construction phase. Qualified observer(s) will scan an exclusion zone of 250 m radius around the work area for at least 30 minutes prior to the start of dredging. If cetaceans are observed in the exclusion zone, dredging will be delayed until they have left the area.	Contractor	Construction Stage	N/A

EIA Reference	EM&A Reference	Recommended Environmental Protection Measures/ Mitigation Measures	Who implement the measures?	When to implement the measures?	Implementation Status
S10.9.4	S9.1	Structures will utilise appropriate design to complement the surrounding landscape wherever possible. Materials and finishes will be considered during detailed design.	CAPCO	Construction Stage	✓
S10.9.4	S9.1	All of the major lighting sources will be pointed inward and downwards to avoid disturbances to wildlife.	CAPCO	Construction Stage	✓
S10.9.4	S9.1	Good site practices and precautionary measures are recommended to be implemented to avoid encroachment onto the nearby natural habitats, minimise disturbance to wildlife, and ensure air and water quality is maintained. Mitigations measures as mentioned in the air quality (Section 4 in Approved EIA Report ref. no. AEIAR-197/2016) and water quality (Section 7 in Approved EIA Report ref. no. AEIAR-197/2016) assessments will be consequently instigated to minimise dust and surface runoff to adjacent wildlife and natural habitats during construction activities.	CAPCO/ Contractor	Construction Stage	✓
S10.9.4	S9.1	Erect fences or demarcate along the boundary of the works area before the commencement of works to prevent vehicle movements, and encroachment of staffs, onto adjacent areas.	CAPCO/ Contractor	Construction Stage	✓
S10.9.4	S9.1	Avoid any damage and unnecessary disturbance to the surrounding natural habitats.	CAPCO/ Contractor	Construction Stage	✓
Landscape & Visual					
S12.8	S11	Sensitive architectural design of the new facilities. This should take into account material texture, colour, finished to structure and the context of the site.	CAPCO/ Design Contractor	Construction Stage	N/A
S12.8	S11	Reinstatement. Following construction, areas temporarily affected by the construction works, will be reinstated to their former state. This will include the artificial shoreline as well as parts of some roads.	CAPCO/ Contractor	Construction Stage	N/A
S12.8	S11	Preservation of vegetation. Plants affected by the proposed Project are all within movable planters. Prior to construction, these affected moveable planters should be re-located to a suitable area, still within the BPPS, taking care to ensure the existing health status of the vegetation is maintained or enhanced at the new location. Once construction is complete the final location of the moveable planters should be integrated into the LMP.	CAPCO/ Contractor	Construction Stage	✓

EIA Reference	EM&A Reference	Recommended Environmental Protection Measures/ Mitigation Measures	Who implement the measures?	to When to implement the measures?	the Implementation Status
S12.8	S11	Update Landscape Master Plan (LMP) to take account of the changes brought about by the Project and explore suitable areas where soft landscaping may be installed amongst the new facilities. The LMP should give due consideration to the possibility of re-provisioning of disturbed lands and provision of screen planting within the facility boundaries as far as practicable.	Qualified Landscape Professional employed by Project Proponent	Construction Stage	N/A

Annex E

Waste Flow Table

Annex E - Waste Flow Table for Additional CCGT Units Project at BPPS

Monthly Summary Waste Flow Table for 2018

Month	Actual Quantities of Inert C&D Materials Generated Monthly ⁽¹⁾					Actual Quantities of C&D Wastes Generated Monthly				
	Total Quantity Generated	Broken Concrete ⁽⁵⁾	Reused in the Contract	Reused in other Projects	Disposed as Public Fill ⁽³⁾	Metals	Paper/ cardboard packaging	Plastics ⁽²⁾	Chemical Waste ⁽⁴⁾	Others, e.g. general refuse ⁽³⁾
	(in '000m ³)	(in '000m ³)	(in '000m ³)	(in '000m ³)	(in '000m ³)	(in '000kg)	(in '000kg)	(in '000kg)	(in'000 kg)	(in '000m ³)
Jan-18	0.048	0.000	0.000	0.000	0.048	63.782	0.000	0.000	0.000	0.033
Feb-18	0.311	0.000	0.000	0.112	0.199	19.790	0.000	0.000	0.000	0.032
Mar-18	1.923	0.000	0.000	0.007	1.916	34.170	0.000	0.000	0.000	0.058
Apr-18	0.399	0.000	0.000	0.000	0.399	9.500	0.000	0.000	0.000	0.057
May-18	2.638	0.000	0.000	0.000	2.638	34.209	0.000	0.000	0.000	0.074
Jun-18	2.754	0.000	0.000	0.000	2.754	29.080	0.000	0.000	0.000	0.051
Sub-total	8.073	0.000	0.000	0.119	7.954	190.531	0.000	0.000	0.000	0.304
Jul-18	3.488	0.000	0.000	0.000	3.488	2.880	0.000	0.000	0.000	0.057
Aug-18	0.000	0.000	0.000	0.000	0.000	0.000	0.000	0.000	0.000	0.000
Sep-18	0.000	0.000	0.000	0.000	0.000	0.000	0.000	0.000	0.000	0.000
Oct-18	0.000	0.000	0.000	0.000	0.000	0.000	0.000	0.000	0.000	0.000
Nov-18	0.000	0.000	0.000	0.000	0.000	0.000	0.000	0.000	0.000	0.000
Dec-18	0.000	0.000	0.000	0.000	0.000	0.000	0.000	0.000	0.000	0.000
Total (2018)	11.561	0.000	0.000	0.119	11.442	193.411	0.000	0.000	0.000	0.361
2016	0.000	0.000	0.000	0.000	0.000	0.000	0.000	0.000	0.000	0.000
2017	29.871	0.554	0.048	0.000	29.269	200.162	0.004	0.750	0.180	0.303
Cumulative	41.432	0.554	0.048	0.119	40.711	393.573	0.004	0.750	0.180	0.665

Notes:

- (1) Inert C&D materials include bricks, concrete, building debris, rubble and excavated spoil.
- (2) Plastics refer to plastic bottles/containers, plastic sheets/foam form packaging material.
- (3) Density Assumption: 1.6(kg/l) for Public Fill and 0.9(kg/l) for General Refuse.
- (4) Chemical waste includes waste oil. Density of waste oil is assumed to be 0.8 kg/L.
- (5) Density of broken concrete is assumed to be 2.5 ton/m³.
- (6) The cut-off data for waste management data is 31 July 2018.