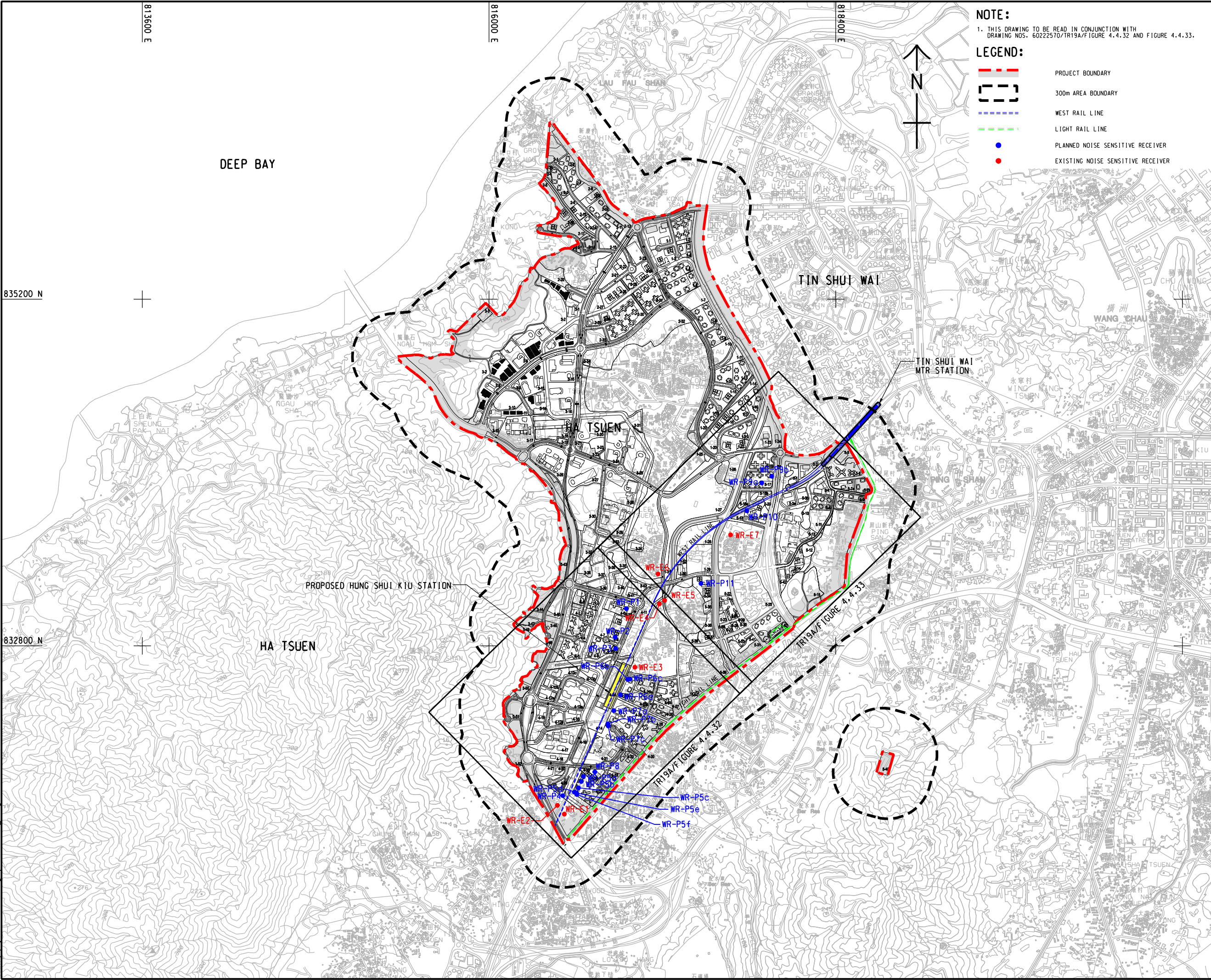


ISO A1 594mm x 841mm  
Approved:  
Checked:  
Designer:  
Project Management Initials:  
Pld File by: zengfx  
PATH: P:\projects\60222570\drawing\report\19a\TR19A\_728.dgn



- NOTE:  
1. THIS DRAWING TO BE READ IN CONJUNCTION WITH  
DRAWING NOS. 60222570/TR19A/FIGURE 4.4.32 AND FIGURE 4.4.33.
- LEGEND:
- PROJECT BOUNDARY
  - 300m AREA BOUNDARY
  - WEST RAIL LINE
  - LIGHT RAIL LINE
  - PLANNED NOISE SENSITIVE RECEIVER
  - EXISTING NOISE SENSITIVE RECEIVER

**AECOM**

PROJECT  
項目

**HUNG SHUI KIU NEW  
DEVELOPMENT AREA  
PLANNING AND  
ENGINEERING STUDY  
- INVESTIGATION**

CLIENT  
業主

**CEDD**  
土木工程拓展署  
Civil Engineering and  
Development Department

**Planning  
Department**

CONSULTANT  
工程顧問公司

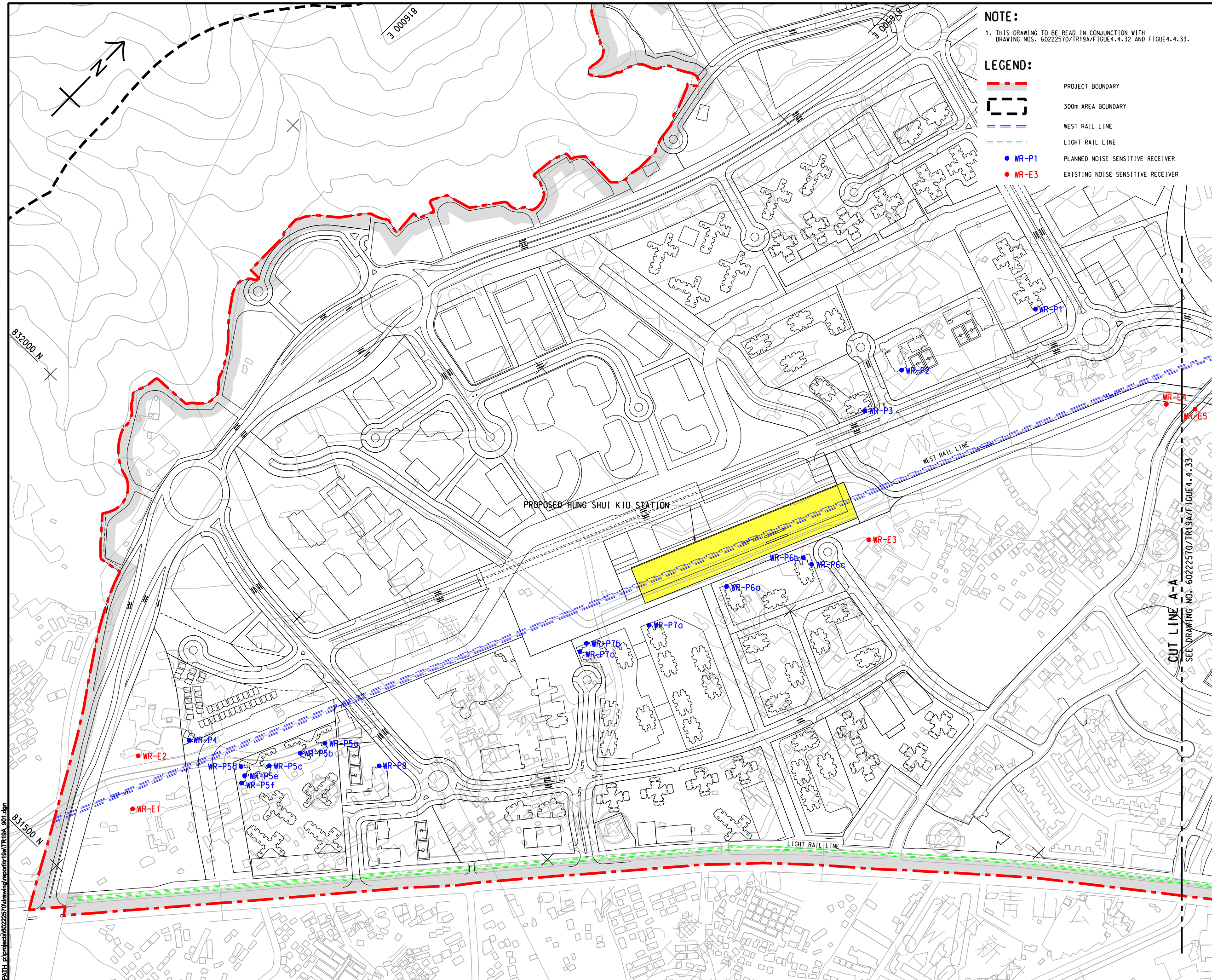
AECOM Asia Company Ltd.  
www.aecom.com

SUB-CONSULTANTS  
分判工程顧問公司

| ISSUE/REVISION<br>修訂 |            |                        |            |
|----------------------|------------|------------------------|------------|
|                      |            |                        |            |
|                      |            |                        |            |
|                      |            |                        |            |
|                      |            |                        |            |
|                      |            |                        |            |
| I/R<br>修訂            | DATE<br>日期 | DESCRIPTION<br>內容摘要    | CHK.<br>校核 |
| STATUS<br>階段         |            |                        |            |
| SCALE<br>比例          |            | DIMENSION UNIT<br>尺寸單位 |            |
| A3 1 : 24000         |            | METRES                 |            |
| KEY PLAN<br>索引圖      |            |                        |            |

|  |                       |
|--|-----------------------|
| PROJECT NO.<br>項目編號  | AGREEMENT NO.<br>協議編號 |
| 60222570   | CE2/2011 (CE)         |
| SHEET TITLE<br>圖紙名稱  |                       |
| LOCATIONS OF REPRESENTATIVE<br>NOISE SENSITIVE RECEIVERS<br>FOR RAIL NOISE (WEST RAIL) -<br>KEY PLAN |                       |
| SHEET NUMBER<br>圖紙編號   |                       |
| 60222570/TR19A/FIGURE 4.4.31   |                       |





● **WR-E3** EXISTING NOISE SENSITIVE RECEIVER

60222570/TR19A/FIGURE 4.4.32



[illegible]

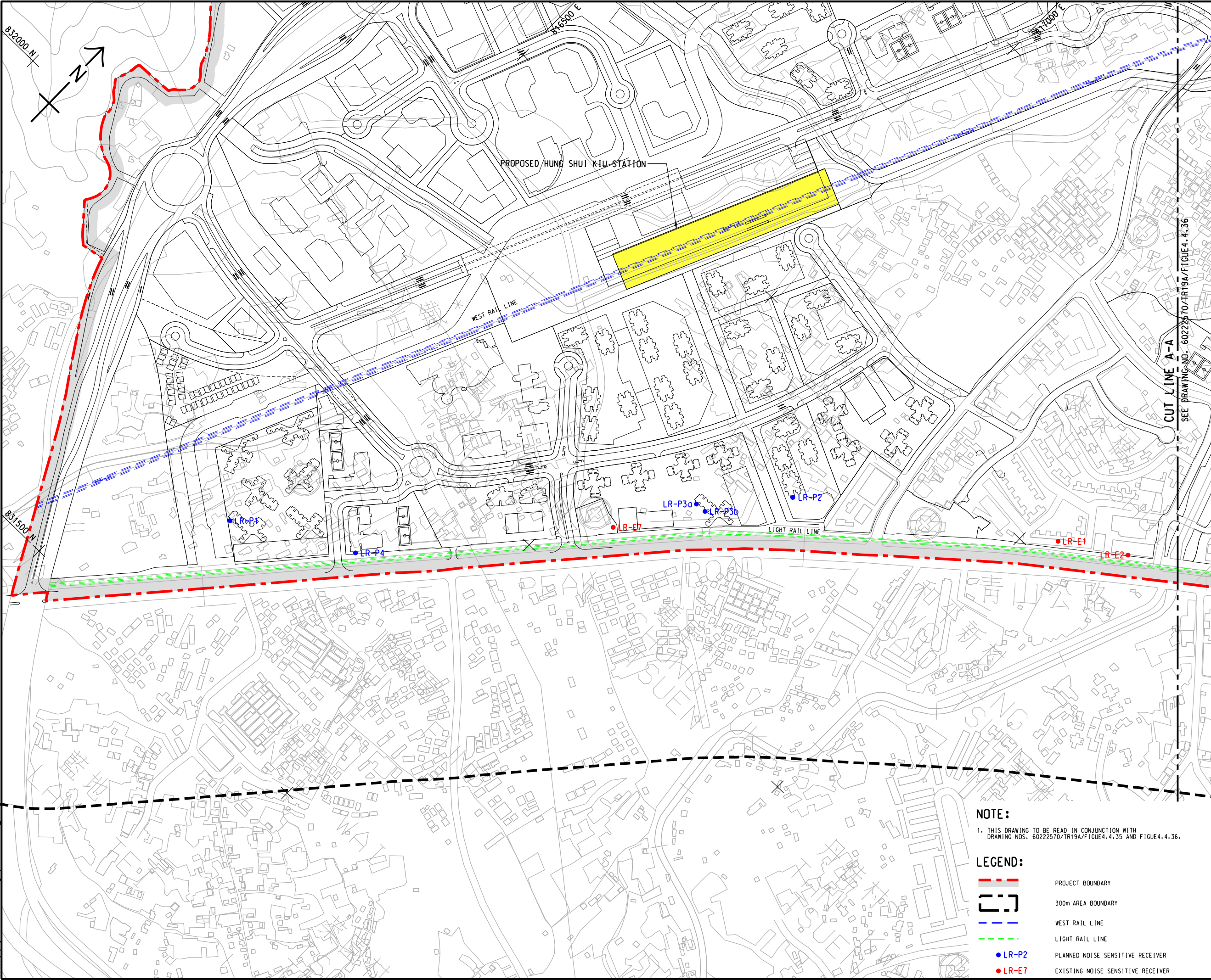


This drawing has been prepared for the use of ASCOM's client. It may not be used, modified, reproduced or relied upon by third parties, except as agreed by ASCOM or as required by law. ASCOM accepts no responsibility, and denies any liability, whatsoever, to any party that uses or relies on this drawing without ASCOM's express written consent. All measurements must be obtained from the stated dimensions.



Pld File by: zengfx  
PATH: F:\projects\60222570\drawing\report\10a\TR19A\_903.dgn

ISO A1 594mm x 841mm  
Approved:  
Checked:  
Designer:  
Project Management Initials:



NOTE:  
1. THIS DRAWING TO BE READ IN CONJUNCTION WITH  
DRAWING NOS. 60222570/TR19A/FIGURE 4.4.35 AND FIGURE 4.4.36.

- LEGEND:
- PROJECT BOUNDARY
  - 300m AREA BOUNDARY
  - WEST RAIL LINE
  - LIGHT RAIL LINE
  - LR-P2  
● LR-E7
  - PLANNED NOISE SENSITIVE RECEIVER
  - EXISTING NOISE SENSITIVE RECEIVER

**AECOM**

PROJECT  
項目

**HUNG SHUI KIU NEW  
DEVELOPMENT AREA  
PLANNING AND  
ENGINEERING STUDY  
- INVESTIGATION**

CLIENT  
業主

**CEDD**  
土木工程拓展署  
Civil Engineering and  
Development Department

**Planning  
Department**

CONSULTANT  
工程顧問公司

AECOM Asia Company Ltd.  
www.aecom.com

SUB-CONSULTANTS  
分判工程顧問公司

ISSUE/REVISION  
發行

|  |  |  |  |
|--|--|--|--|
|  |  |  |  |
|  |  |  |  |
|  |  |  |  |
|  |  |  |  |

| IR<br>發行 | DATE<br>日期 | DESCRIPTION<br>內容摘要 | CHK.<br>校核 |
|----------|------------|---------------------|------------|
|          |            |                     |            |
|          |            |                     |            |
|          |            |                     |            |

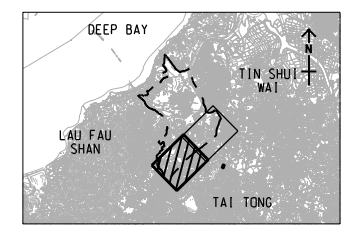
STATUS  
階段

SCALE  
比例

A3 1 : 5000

KEY PLAN  
索引圖

A3 1 : 300000



PROJECT NO.  
項目編號

60222570

AGREEMENT NO.  
協議編號

CE2/2011 (CE)

SHEET TITLE  
圖名

LOCATIONS OF REPRESENTATIVE  
NOISE SENSITIVE RECEIVERS FOR  
RAIL NOISE (LIGTH RAIL)

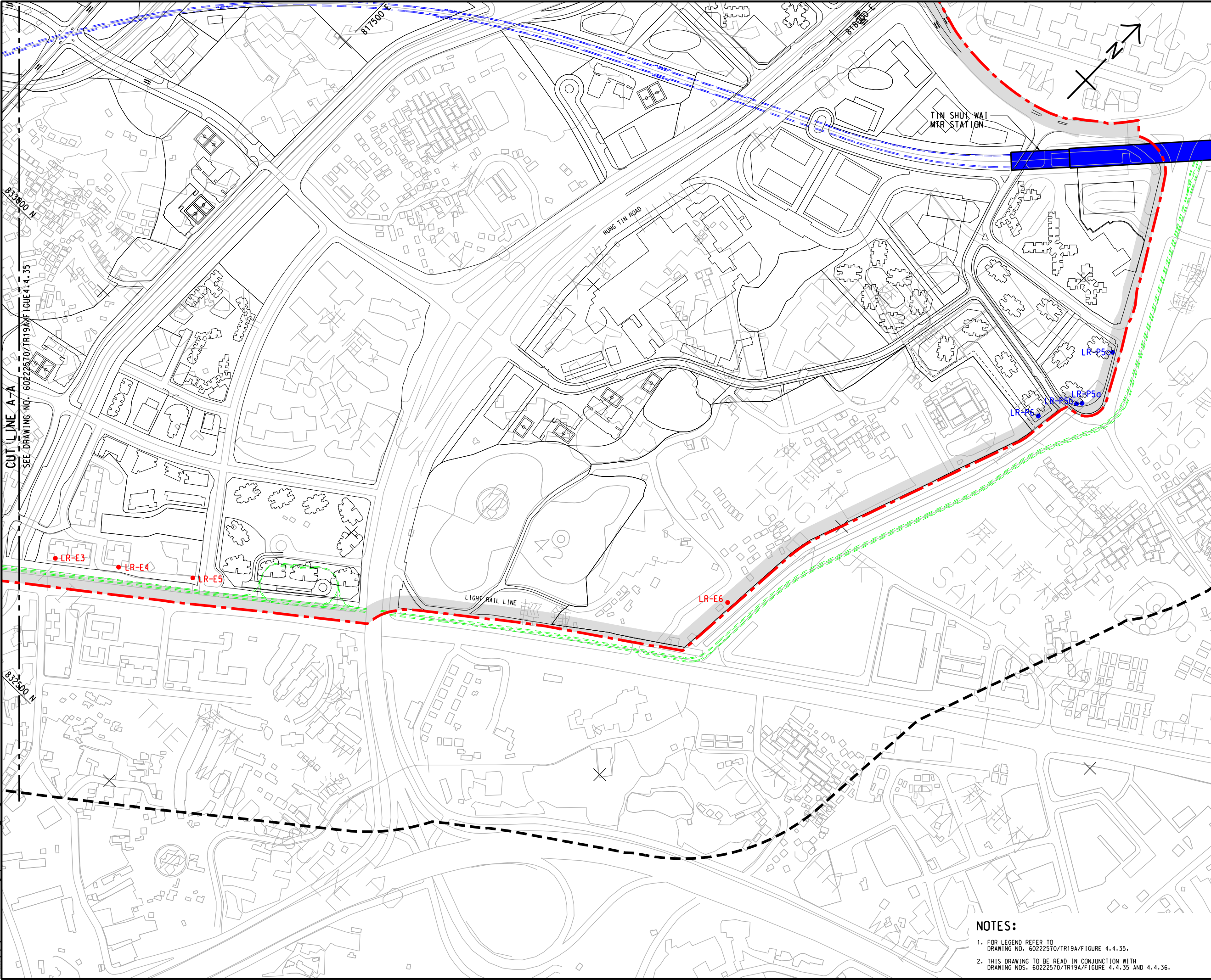
SHEET 1 OF 2

SHEET NUMBER  
圖號

60222570/TR19A/FIGURE 4.4.35



ISO A1 594mm x 841mm  
Approved:  
Checked:  
Designer:  
Project Management Initials:  
Pld File by: zengfx  
PATH: F:\projects\60222570\drawing\report\10a\TR19A\_904.dgn




This drawing has been prepared for the use of AECOM's client. It may not be used, modified, reproduced or relied upon by third parties, except as agreed by AECOM or as required by law. AECOM accepts no responsibility, and denies any liability whatsoever, to any party for loss or damage of any kind, whether in contract, tort or otherwise, arising from the use of this drawing without AECOM's express written consent. All measurements must be obtained from the related dimensions.




**PROJECT**  
项目  
**HUNG SHUI KIU NEW DEVELOPMENT AREA PLANNING AND ENGINEERING STUDY - INVESTIGATION**

**CLIENT**  
業主



土木工程拓展署  
Civil Engineering and Development Department



規劃署  
Planning Department

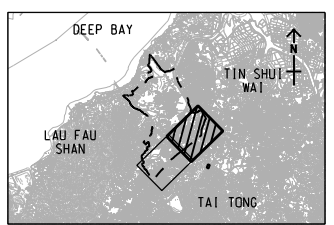
**CONSULTANT**  
工程顧問公司  
AECOM Asia Company Ltd.  
www.aecom.com

**SUB-CONSULTANTS**  
分判工程顧問公司

| ISSUE/REVISION<br>修訂 |            |                     |            |  |
|----------------------|------------|---------------------|------------|--|
|                      |            |                     |            |  |
|                      |            |                     |            |  |
|                      |            |                     |            |  |
|                      |            |                     |            |  |
| I/R<br>修訂            | DATE<br>日期 | DESCRIPTION<br>內容摘要 | CHK.<br>校核 |  |
|                      |            |                     |            |  |

**STATUS**  
階段

**SCALE**  
比例  
A3 1 : 5000  
**KEY PLAN** A3 1 : 300000



**PROJECT NO.**  
項目編號  
60222570

**AGREEMENT NO.**  
協議編號  
CE2/2011 (CE)

**SHEET TITLE**  
圖紙名稱  
LOCATIONS OF REPRESENTATIVE NOISE SENSITIVE RECEIVERS FOR RAIL NOISE (LIGTH RAIL)

**SHEET NUMBER**  
圖紙編號  
60222570/TR19A/FIGURE 4.4.36

SHEET 2 OF 2

- NOTES:**
- FOR LEGEND REFER TO DRAWING NO. 60222570/TR19A/FIGURE 4.4.35.
  - THIS DRAWING TO BE READ IN CONJUNCTION WITH DRAWING NOS. 60222570/TR19A/FIGURE 4.4.35 AND 4.4.36.