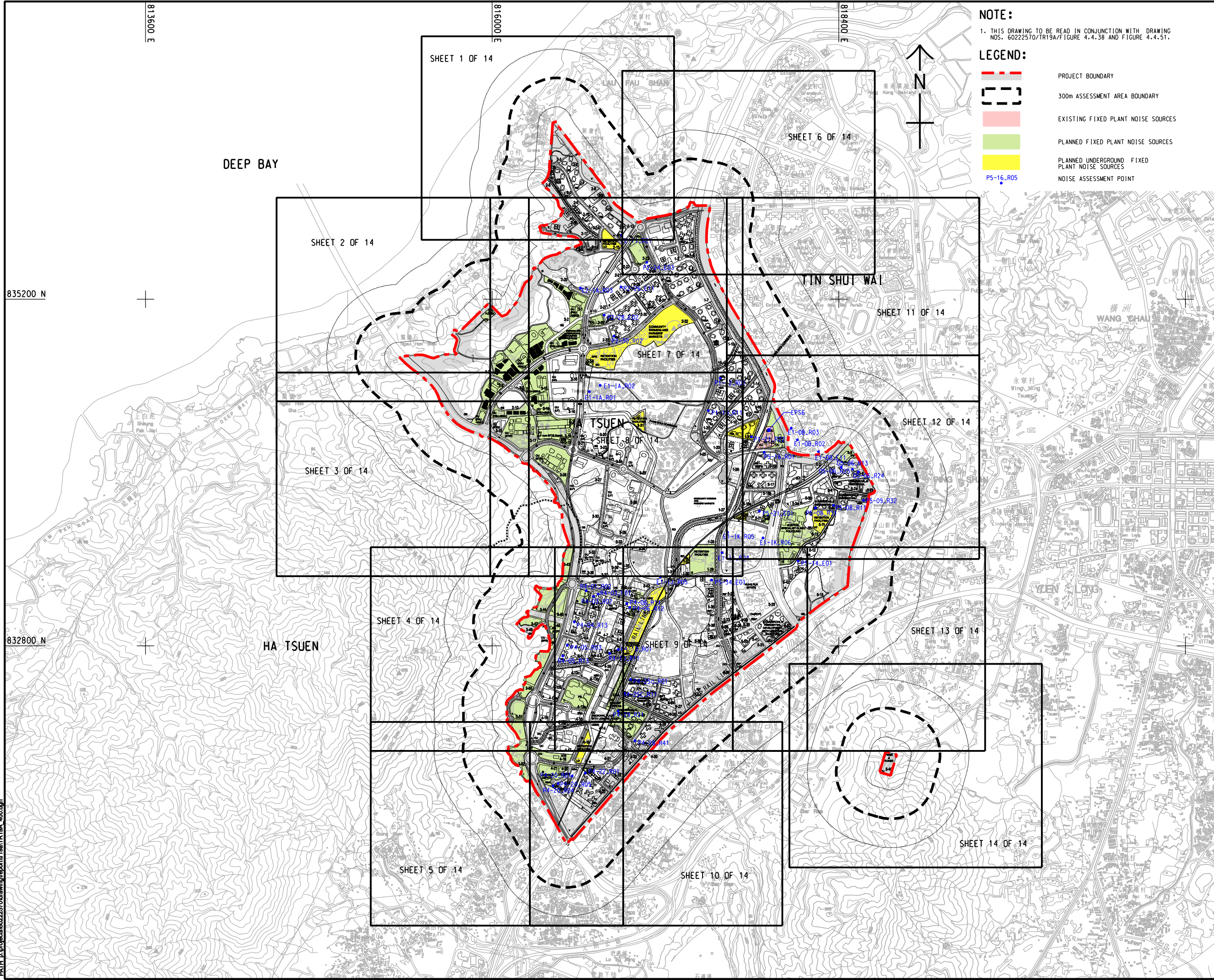


ISO A1 594mm x 841mm
Approved:
Checked:
Designer:
Project Management Initials:
Pld File by: ZENGFX
PATH: P:\projects\60222570\drawing\pctrlr\0a1\TR19A_400.dgn



- NOTE:
1. THIS DRAWING TO BE READ IN CONJUNCTION WITH DRAWING NOS. 60222570/TR19A/FIGURE 4.4.38 AND FIGURE 4.4.51.
- LEGEND:
- PROJECT BOUNDARY
 - 300m ASSESSMENT AREA BOUNDARY
 - EXISTING FIXED PLANT NOISE SOURCES
 - PLANNED FIXED PLANT NOISE SOURCES
 - PLANNED UNDERGROUND FIXED PLANT NOISE SOURCES
 - NOISE ASSESSMENT POINT

AECOM

PROJECT
項目

HUNG SHUI KIU NEW DEVELOPMENT AREA PLANNING AND ENGINEERING STUDY - INVESTIGATION

CLIENT
業主

CEDD
土木工程拓展署
Civil Engineering and Development Department

Planning Department

CONSULTANT
工程顧問公司

AECOM Asia Company Ltd.
www.aecom.com

SUB-CONSULTANTS
分判工程顧問公司

ISSUE/REVISION
修訂

I/R 修訂	DATE 日期	DESCRIPTION 內容摘要	CHK. 校核

STATUS
狀態

SCALE
比例

A3 1 : 24000

KEY PLAN
索引圖

DIMENSION UNIT
尺寸單位

METRES

PROJECT NO.
項目編號

60222570

AGREEMENT NO.
協議編號

CE2/2011 (CE)

SHEET TITLE
圖紙名稱

LOCATIONS OF FIXED PLANT NOISE SOURCES AND REPRESENTATIVE NOISE SENSITIVE RECEIVERS - KEY PLAN

SHEET NUMBER
圖紙編號

60222570/TR19A/FIGURE 4.4.37

ISO A1 594mm x 841mm
Approved:
Checked:
Designer:
Project Management Initials:
Pld File by: ZENGFX
PATH: P:\projects\60222570\drawing\pctr19a\tr19a_401.dgn

NOTE:
1. THIS DRAWING TO BE READ IN CONJUNCTION WITH
DRAWING NOS. 60222570/TR19A/FIGURE 4.4.38 TO 4.4.51.

- LEGEND:
- PROJECT BOUNDARY
 - 300m ASSESSMENT AREA BOUNDARY
 - EXISTING FIXED PLANT NOISE SOURCES
 - PLANNED FIXED PLANT NOISE SOURCES
 - PLANNED UNDERGROUND FIXED PLANT NOISE SOURCES
 - NOISE ASSESSMENT POINT

后海湾
(深湾)
DEEP BAY
(SHENZHEN WAN)

DEEP BAY

HANG HAU TSUEN

LAU FAU SHAN

SHA KONG WAI

CUT LINE A-A
SEE DRAWING NOS. 60222570/TR19A/FIGURE 4.4.39 AND 4.4.44

CUT LINE B-B
SEE DRAWING NO. 60222570/TR19A/FIGURE 4.4.43

AECOM

PROJECT
项目
HUNG SHUI KIU NEW
DEVELOPMENT AREA
PLANNING AND
ENGINEERING STUDY
- INVESTIGATION

CLIENT
業主
CEDD
土木工程拓展署
Civil Engineering and
Development Department
規劃署
Planning
Department

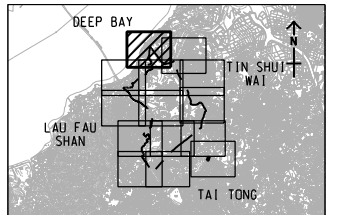
CONSULTANT
工程顧問公司
AECOM Asia Company Ltd.
www.aecom.com

SUB-CONSULTANTS
分判工程顧問公司

ISSUE/REVISION 修訂				
I/R 修訂	DATE 日期	DESCRIPTION 內容摘要	CHK. 校核	

STATUS
階段

SCALE
比例
A3 1 : 5000
DIMENSION UNIT
尺寸單位
METRES
A3 1 : 300000
KEY PLAN
索引圖



PROJECT NO.
項目編號
60222570
AGREEMENT NO.
協議編號
CE2/2011 (CE)

SHEET TITLE
圖紙名稱
LOCATIONS OF FIXED PLANT NOISE
SOURCES AND REPRESENTATIVE
NOISE SENSITIVE RECEIVERS
SHEET 1 OF 14

SHEET NUMBER
圖紙編號
60222570/TR19A/FIGURE 4.4.38

ISO A1 594mm x 841mm
Approved:
Checked:
Designer:
Project Management Initials:
Pld File by: ZENGFY
PATH: P:\projects\60222570\drawing\report\10a\TR19A_402.dgn

- NOTES:
1. FOR LEGEND REFER TO DRAWING NO. 60222570/TR19A/FIGURE 4.4.38.
 2. THIS DRAWING TO BE READ IN CONJUNCTION WITH DRAWING NOS. 60222570/TR19A/FIGURE 4.4.38 TO 4.4.51.

835500 N

835000 N

815000 E

815500 E

816000 E

后海湾
(深湾)
DEEP BAY
(SHENZHEN WAN)

CUT LINE A-A

SEE DRAWING NO.
60222570/TR19A/FIGURE 4.4.34

SHA KONG TSUEN

CUT LINE D-D

SEE DRAWING NO. 60222570/TR19A/FIGURE 4.4.44

CUT LINE C-C

SEE DRAWING NO. 60222570/TR19A/FIGURE 4.4.40

后海湾大桥
(SHENZHEN WAN BRIDGE)

后海湾
(深湾)
DEEP BAY
(SHENZHEN WAN)

后海湾
(深湾)
DEEP BAY
(SHENZHEN WAN)

后海湾
(深湾)
DEEP BAY
(SHENZHEN WAN)

AECOM

PROJECT
项目

HUNG SHUI KIU NEW DEVELOPMENT AREA PLANNING AND ENGINEERING STUDY - INVESTIGATION

CLIENT
業主



土木工程拓展署
Civil Engineering and
Development Department



規劃署
Planning
Department

CONSULTANT
工程顧問公司

AECOM Asia Company Ltd.
www.aecom.com

SUB-CONSULTANTS
分判工程顧問公司

ISSUE/REVISION
修訂

I/R 修訂	DATE 日期	DESCRIPTION 內容摘要	CHK. 校核
-----------	------------	---------------------	------------

STATUS
階段

SCALE
比例

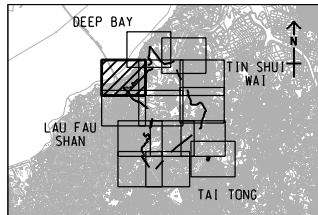
A3 1 : 5000

DIMENSION UNIT
尺寸單位

METRES

KEY PLAN
索引圖

A3 1 : 300000



PROJECT NO.
項目編號

60222570

AGREEMENT NO.
協議編號

CE2/2011 (CE)

SHEET TITLE
圖紙名稱

LOCATIONS OF FIXED PLANT NOISE SOURCES AND REPRESENTATIVE NOISE SENSITIVE RECEIVERS

SHEET 2 OF 14

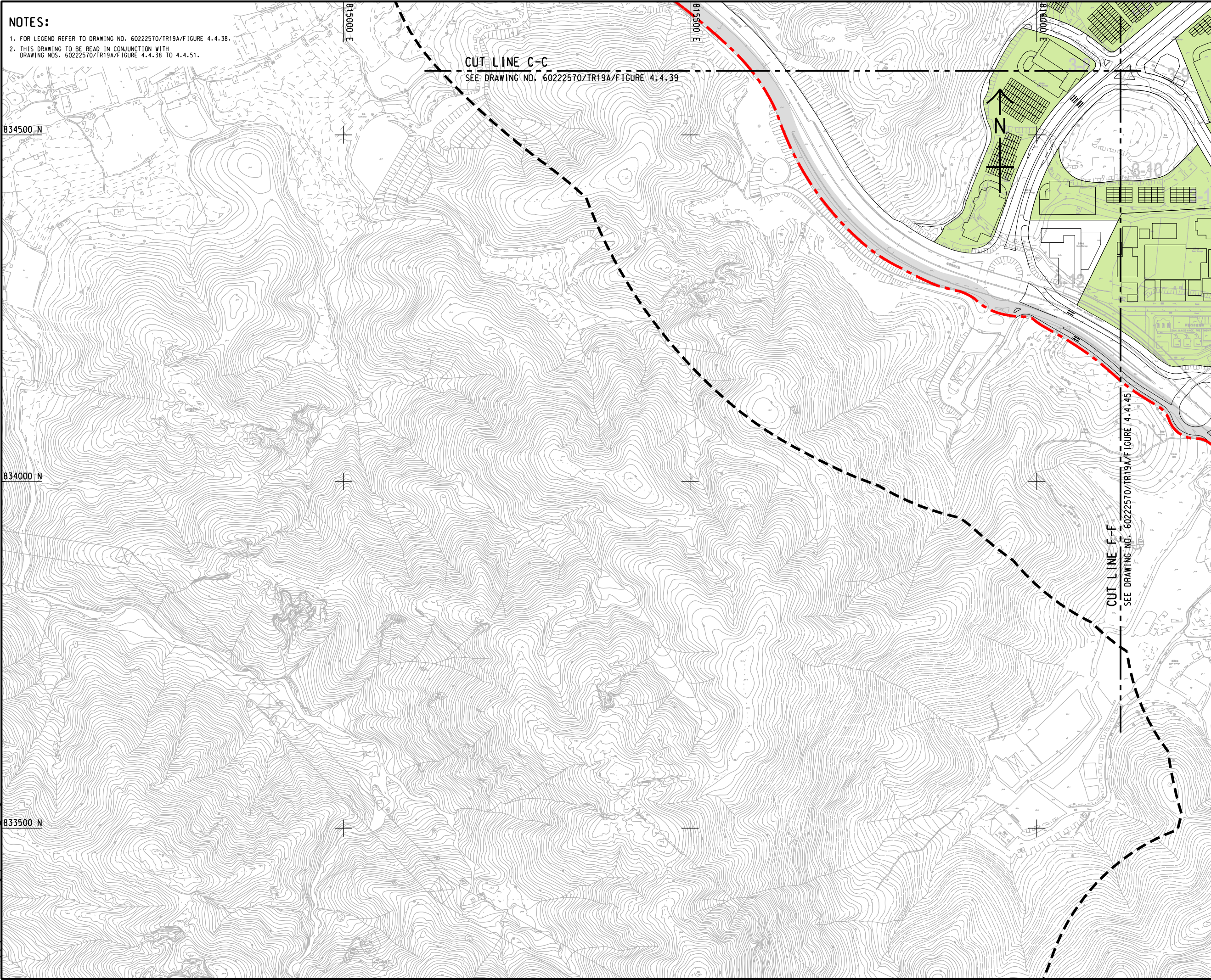
SHEET NUMBER
圖紙編號

60222570/TR19A/FIGURE 4.4.39

This drawing has been prepared for the use of AECOM's client. It may not be used, modified, reproduced or relied upon by third parties, except as agreed by AECOM or as required by law. AECOM accepts no responsibility, and denies any liability whatsoever, to any party that uses or relies on this drawing without AECOM's express written consent. Do not scale this document. All measurements must be obtained from the related dimensions.

ISO A1 594mm x 841mm
Approved:
Checked:
Designer:
Project Management Initials:
Pld File by: ZENGFX
PATH: F:\projects\60222570\drawing\pcentre\0a\TR19A_403.dgn

- NOTES:
1. FOR LEGEND REFER TO DRAWING NO. 60222570/TR19A/FIGURE 4.4.38.
 2. THIS DRAWING TO BE READ IN CONJUNCTION WITH DRAWING NOS. 60222570/TR19A/FIGURE 4.4.38 TO 4.4.51.



CUT LINE C-C
SEE DRAWING NO. 60222570/TR19A/FIGURE 4.4.39

CUT LINE F-F
SEE DRAWING NO. 60222570/TR19A/FIGURE 4.4.45

This drawing has been prepared for the use of AECOM's client. It may not be used, modified, reproduced or relied upon by third parties, except as agreed by AECOM or as required by law. AECOM accepts no responsibility, and denies any liability whatsoever, to any party that uses or relies on this drawing without AECOM's express written consent. All measurements must be obtained from the related dimensions.

AECOM

PROJECT
項目

**HUNG SHUI KIU NEW
DEVELOPMENT AREA
PLANNING AND
ENGINEERING STUDY
- INVESTIGATION**

CLIENT
業主



土木工程拓展署
Civil Engineering and
Development Department



規劃署
Planning
Department

CONSULTANT
工程顧問公司

AECOM Asia Company Ltd.
www.aecom.com

SUB-CONSULTANTS
分判工程顧問公司

ISSUE/REVISION
發行

I/R 發行	DATE 日期	DESCRIPTION 內容摘要	CHK. 校核
-----------	------------	---------------------	------------

STATUS
階段

SCALE
比例

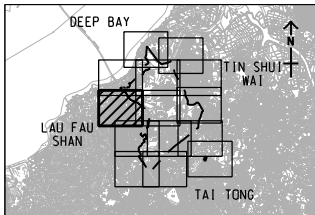
A3 1 : 5000

DIMENSION UNIT
尺寸單位

METRES

KEY PLAN
索引圖

A3 1 : 300000



PROJECT NO.
項目編號

60222570

AGREEMENT NO.
協議編號

CE2/2011 (CE)

SHEET TITLE
圖紙名稱

LOCATIONS OF FIXED PLANT NOISE
SOURCES AND REPRESENTATIVE
NOISE SENSITIVE RECEIVERS

SHEET 3 OF 14

SHEET NUMBER
圖紙編號

60222570/TR19A/FIGURE 4.4.40

1. FOR LEGEND REFER TO DRAWING NO. 60222570/TR19A/FIGURE 4.4.38.
2. THIS DRAWING TO BE READ IN CONJUNCTION WITH
DRAWING NOS. 60222570/TR19A/FIGURE 4.4.38 TO 4.4.51.

832500 N

CUT LINE G-G

SEE DRAWING NO. 60222570/TR19A/FIGURE 4.4.42

SEE DRAWING NO. 60222570/TR19A/FIGURE 4.4.40



YICK YUEN TSUEN

PROJECT
項目

HUNG SHUI KIU NEW DEVELOPMENT AREA PLANNING AND ENGINEERING STUDY - INVESTIGATION

CLIENT
業主



CONSULTANT
工程顧問公司

AECOM Asia Company Ltd.
www.aecom.com

SUB-CONSULTANTS
分制工程顧問公司

ISSUE/REVISION
修訂

I/R 修灯	DATE 日期	DESCRIPTION 内容摘要	CHK 审核
-----------	------------	---------------------	-----------

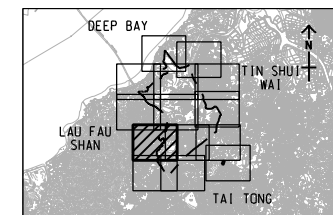
STATUS
股SCALE
比例

A3 1 : 5000

DIMENSION UNIT
尺寸單位

METRES

KEY PLAN A3 1 : 300000

PROJECT NO.
項目番号

60222570

AGREEMENT NO.

CE2/2011 (CE)

SHEET TITLE
圖紙名稱

LOCATIONS OF FIXED PLANT NOISE SOURCES AND REPRESENTATIVE NOISE SENSITIVE RECEIVERS

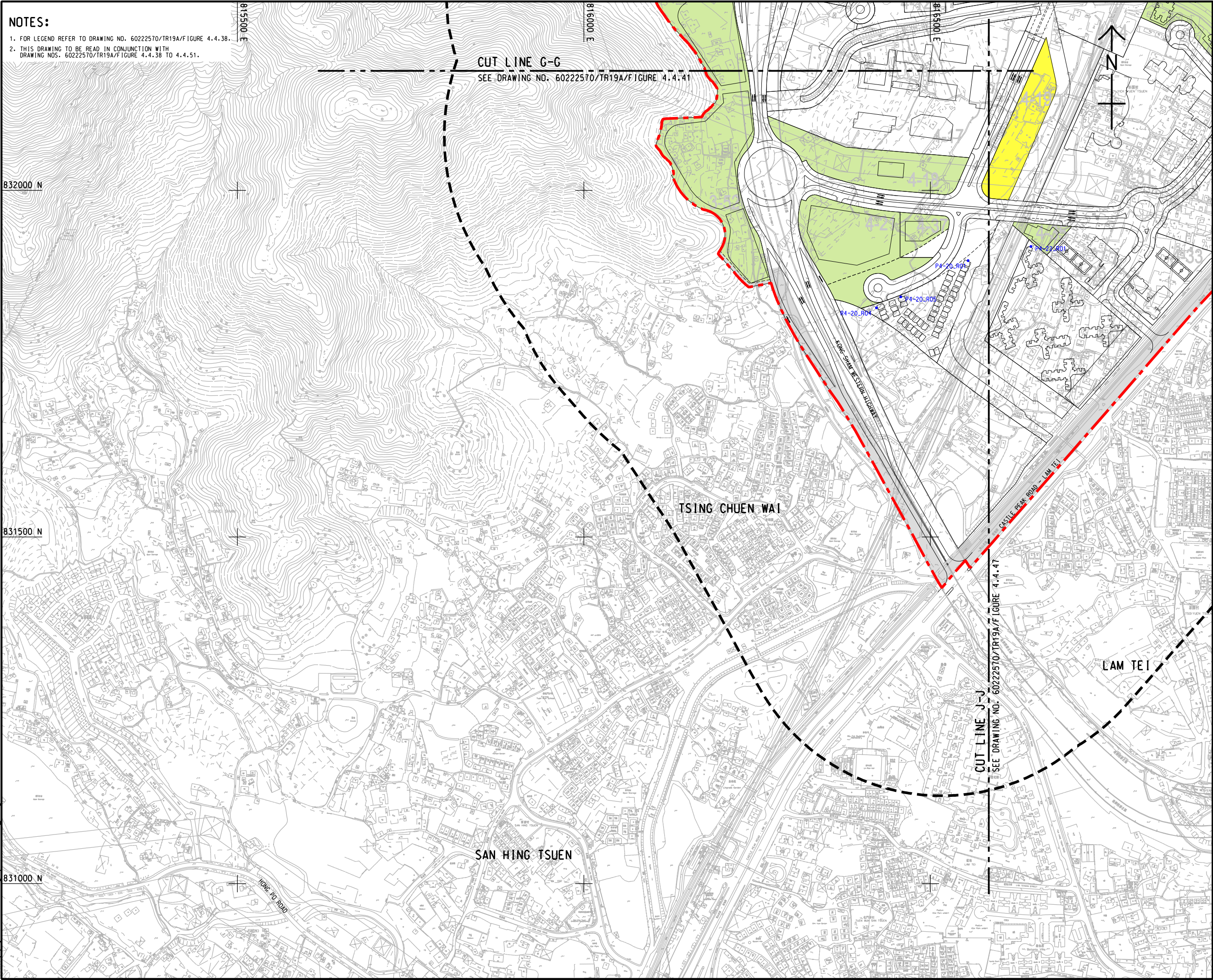
SHEET 4 OF 14

SHEET NUMBER
圖紙編號

60222570/TR19A/FIGURE 4.4.41

ISO A1 594mm x 841mm
Approved:
Checked:
Designer:
Project Management Initials:
Pld File by: ZENGFX
PATH: F:\projects\60222570\drawing\report\19a\TR19A_405.dgn

- NOTES:
1. FOR LEGEND REFER TO DRAWING NO. 60222570/TR19A/FIGURE 4.4.38.
 2. THIS DRAWING TO BE READ IN CONJUNCTION WITH DRAWING NOS. 60222570/TR19A/FIGURE 4.4.38 TO 4.4.51.



AECOM

PROJECT

HUNG SHUI KIU NEW
DEVELOPMENT AREA
PLANNING AND
ENGINEERING STUDY
- INVESTIGATION

CLIENT



土木工程拓展署
Civil Engineering and
Development Department



規劃署
Planning
Department

CONSULTANT

AECOM Asia Company Ltd.
www.aecom.com

SUB-CONSULTANTS

分判工程顧問公司

ISSUE/REVISION

NO.	DATE	DESCRIPTION	CHK.

STATUS

STATUS

SCALE

比例

A3 1: 5000

KEY PLAN

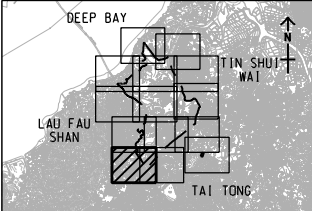
索引圖

DIMENSION UNIT

尺寸單位

METRES

A3 1: 300000



PROJECT NO.

項目編號

60222570

AGREEMENT NO.

協議編號

CE2/2011 (CE)

SHEET TITLE

圖紙名稱

LOCATIONS OF FIXED PLANT NOISE
SOURCES AND REPRESENTATIVE
NOISE SENSITIVE RECEIVERS

SHEET 5 OF 14

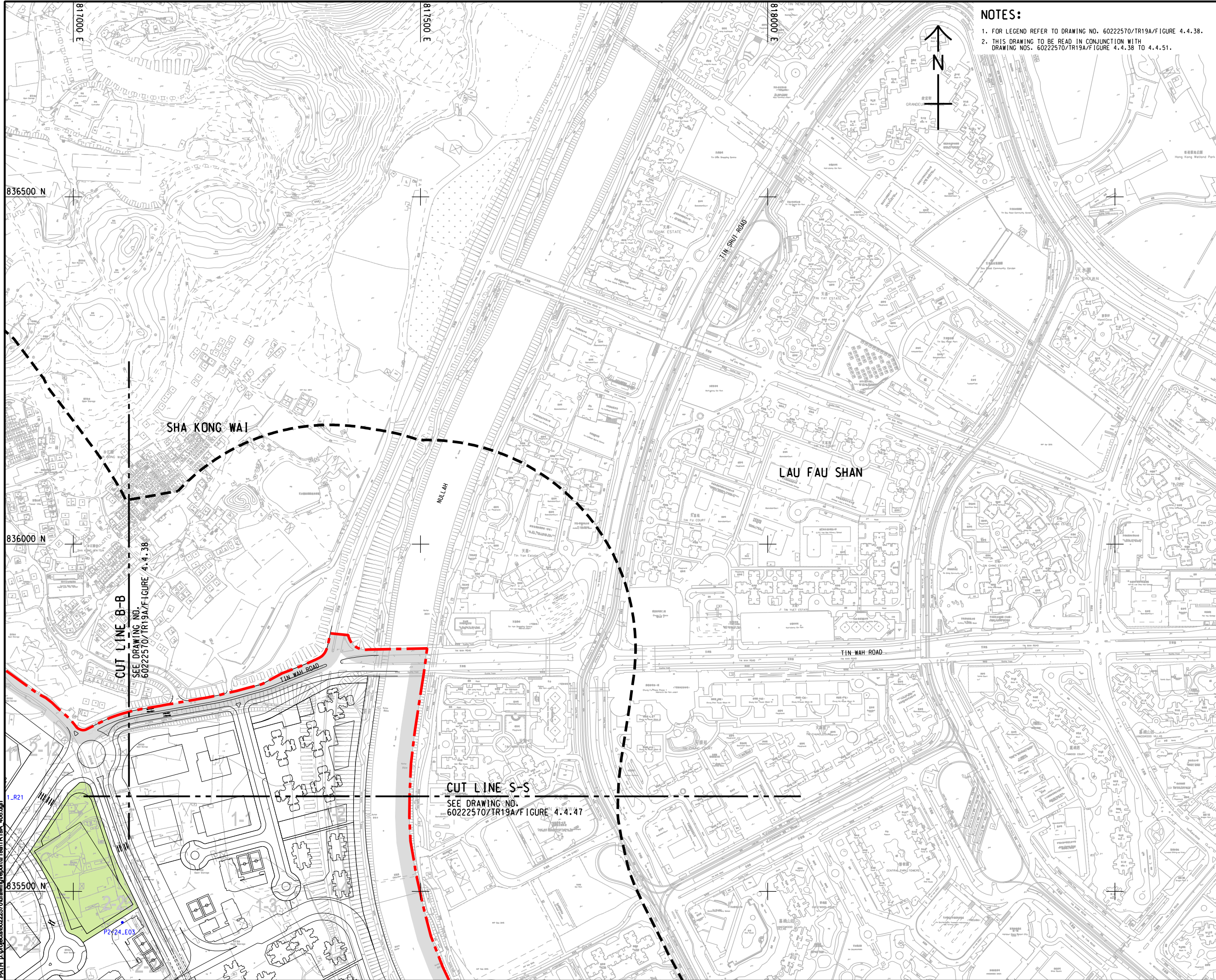
SHEET NUMBER

圖紙編號

60222570/TR19A/FIGURE 4.4.42

Pld File by: ZENGFX
PATH: E:\projects\60222570\drawing\pset\tr19a_408.dgn

ISO A1 594mm x 841mm
Approved:
Checked:
Designer:
Project Management Initials:



- NOTES:
1. FOR LEGEND REFER TO DRAWING NO. 60222570/TR19A/FIGURE 4.4.38.
 2. THIS DRAWING TO BE READ IN CONJUNCTION WITH DRAWING NOS. 60222570/TR19A/FIGURE 4.4.38 TO 4.4.51.


This drawing has been prepared for the use of AECOM's client. It may not be used, modified, reproduced or relied upon by third parties, except as agreed by AECOM or as required by law. AECOM accepts no responsibility, and denies any liability whatsoever, to any party that uses or relies on this drawing without AECOM's express written consent. Do not scale this document. All measurements must be obtained from the related dimensions.

AECOM


PROJECT
項目

HUNG SHUI KIU NEW DEVELOPMENT AREA PLANNING AND ENGINEERING STUDY - INVESTIGATION

CLIENT
業主



土木工程拓展署
Civil Engineering and Development Department



規劃署
Planning Department

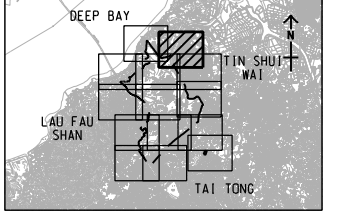
CONSULTANT
工程顧問公司

AECOM Asia Company Ltd.
www.aecom.com

SUB-CONSULTANTS
分判工程顧問公司

ISSUE/REVISION 修訂			
I/R 修訂	DATE 日期	DESCRIPTION 內容摘要	CHK. 校核
STATUS 階段			

SCALE 比例	DIMENSION UNIT 尺寸單位
A3 1 : 5000	METRES
KEY PLAN 索引圖	A3 1 : 300000



PROJECT NO.
項目編號

60222570

AGREEMENT NO.
協議編號

CE2/2011 (CE)

SHEET TITLE
圖紙名稱

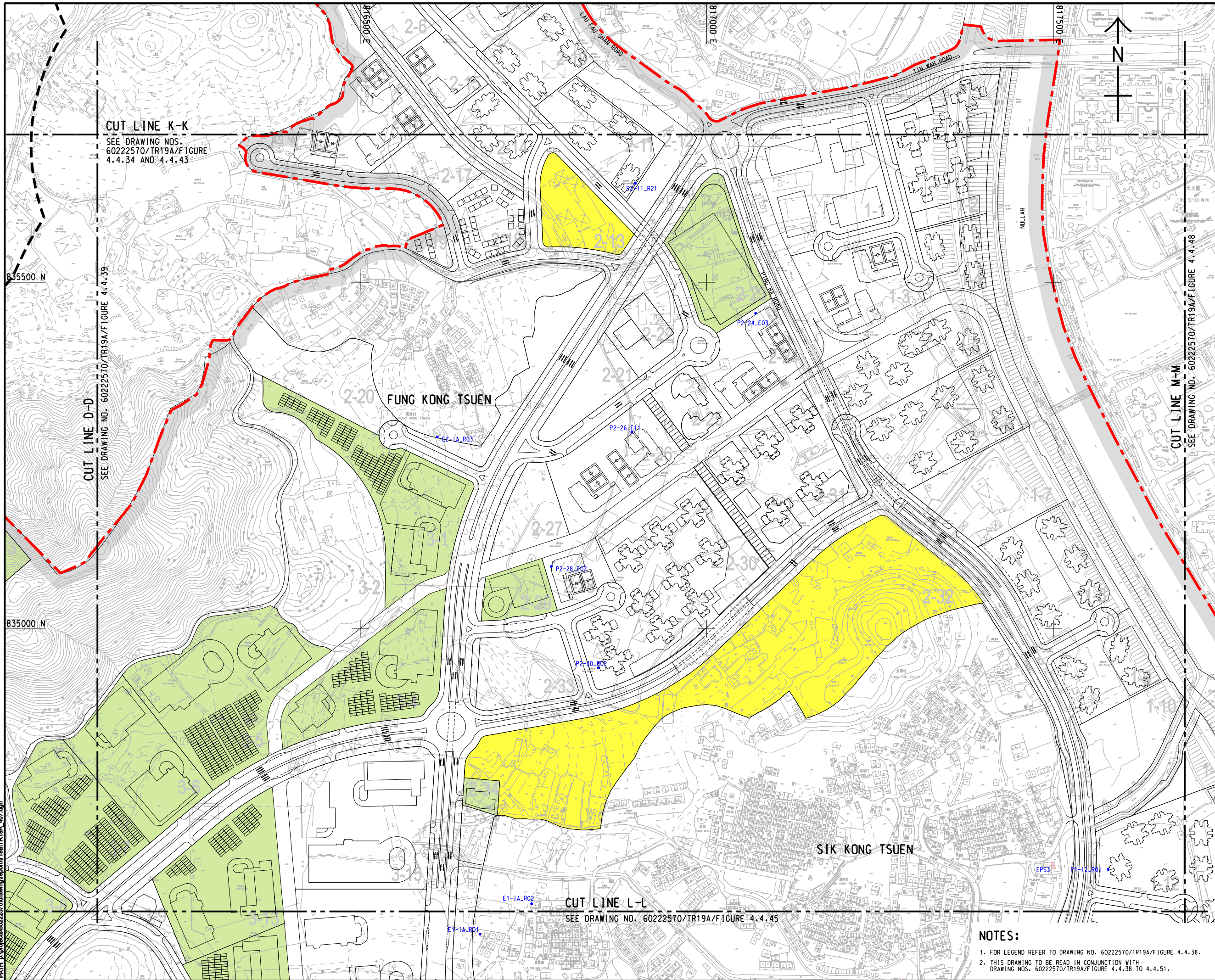
LOCATIONS OF FIXED PLANT NOISE SOURCES AND REPRESENTATIVE NOISE SENSITIVE RECEIVERS

SHEET 6 OF 14

SHEET NUMBER
圖紙編號

60222570/TR19A/FIGURE 4.4.43

ISO A1 594mm x 841mm
Approved:
Checked:
Designer:
Project Management Initials:
Pld File by: ZENGFX
PATH: P:\projects\60222570\drawing\supc\tr19a_407.dgn



AECOM

PROJECT

**HUNG SHUI KIU NEW
DEVELOPMENT AREA
PLANNING AND
ENGINEERING STUDY
- INVESTIGATION**

CLIENT



土木工程拓展署
Civil Engineering and
Development Department



規劃署
Planning Department

CONSULTANT

AECOM Asia Company Ltd.
www.aecom.com

SUB-CONSULTANTS

分判工程顧問公司

ISSUE/REVISION

NO.	DATE	DESCRIPTION	CHK.

STATUS

STATUS

SCALE

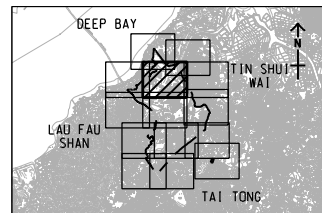
A3 1 : 5000

KEY PLAN

DIMENSION UNIT

METRES

A3 1 : 300000



PROJECT NO.

60222570

AGREEMENT NO.

CE2/2011 (CE)

SHEET TITLE

LOCATIONS OF FIXED PLANT NOISE
SOURCES AND REPRESENTATIVE
NOISE SENSITIVE RECEIVERS

SHEET 7 OF 14

SHEET NUMBER

60222570/TR19A/FIGURE 4.4.44

NOTES:

- FOR LEGEND REFER TO DRAWING NO. 60222570/TR19A/FIGURE 4.4.38.
- THIS DRAWING TO BE READ IN CONJUNCTION WITH
DRAWING NOS. 60222570/TR19A/FIGURE 4.4.38 TO 4.4.51.

SHEET NUMBER
圖紙編號

60222570/TR19A/FIGURE 4.4.45

[illegible]

I/R 修訂	DATE 日期	DESCRIPTION 內容摘要	CHK. 複核
-----------	------------	---------------------	------------

STATUS
増設

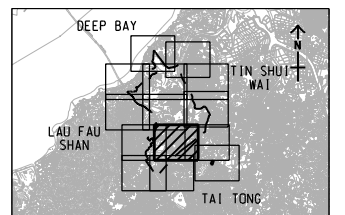
SCALE
比例

A3 1 : 5000

DIMENSION UNIT
尺寸單位

METRES

KEY PLAN A3 1 : 300000

PROJECT NO.
項目編號

60222570

AGREEMENT NO.
編號

CE2/2011 (CE)

SHEET TITLE
圖紙名義

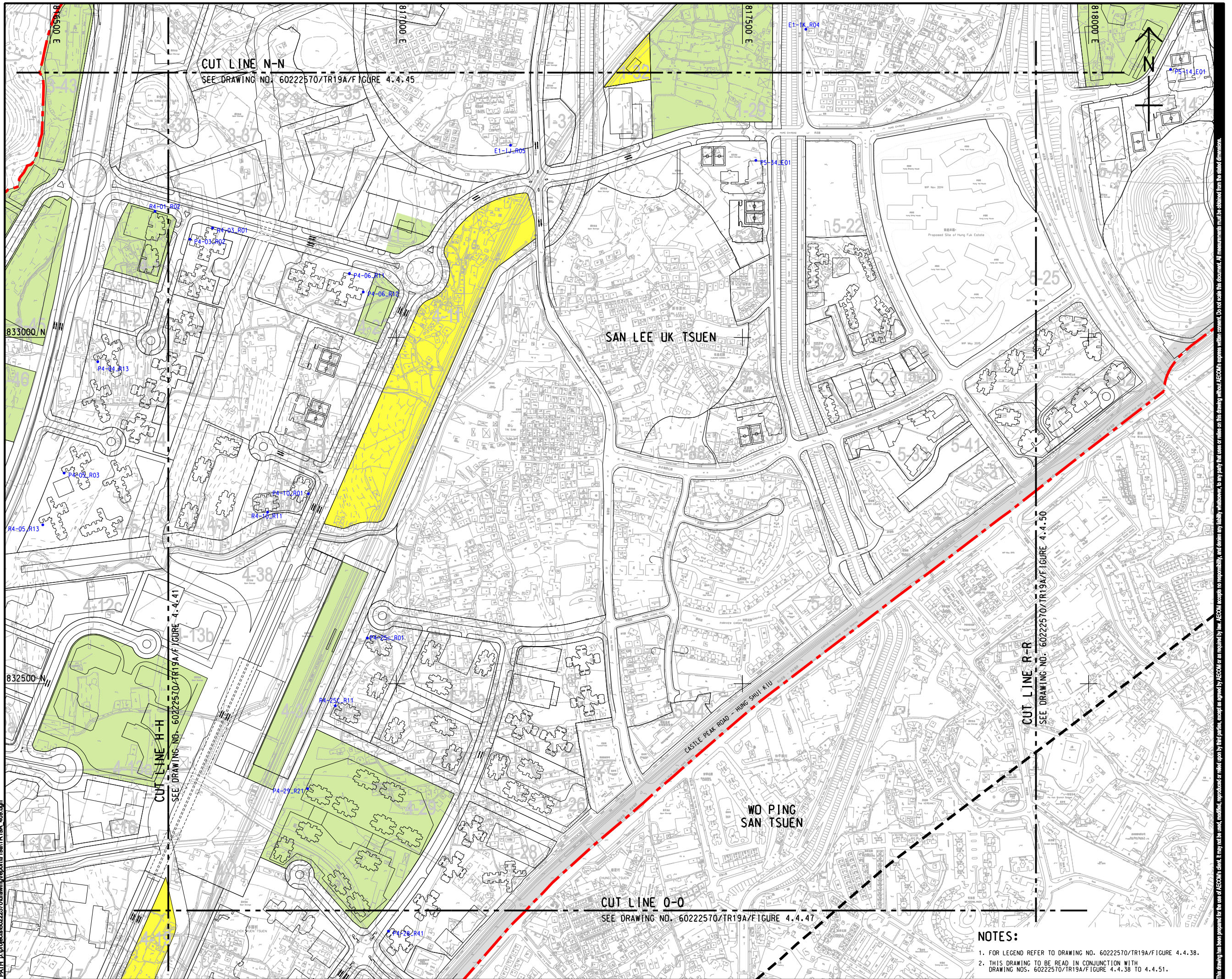
LOCATIONS OF FIXED PLANT NOISE SOURCES AND REPRESENTATIVE NOISE SENSITIVE RECEIVERS

SHEET 9 OF 14

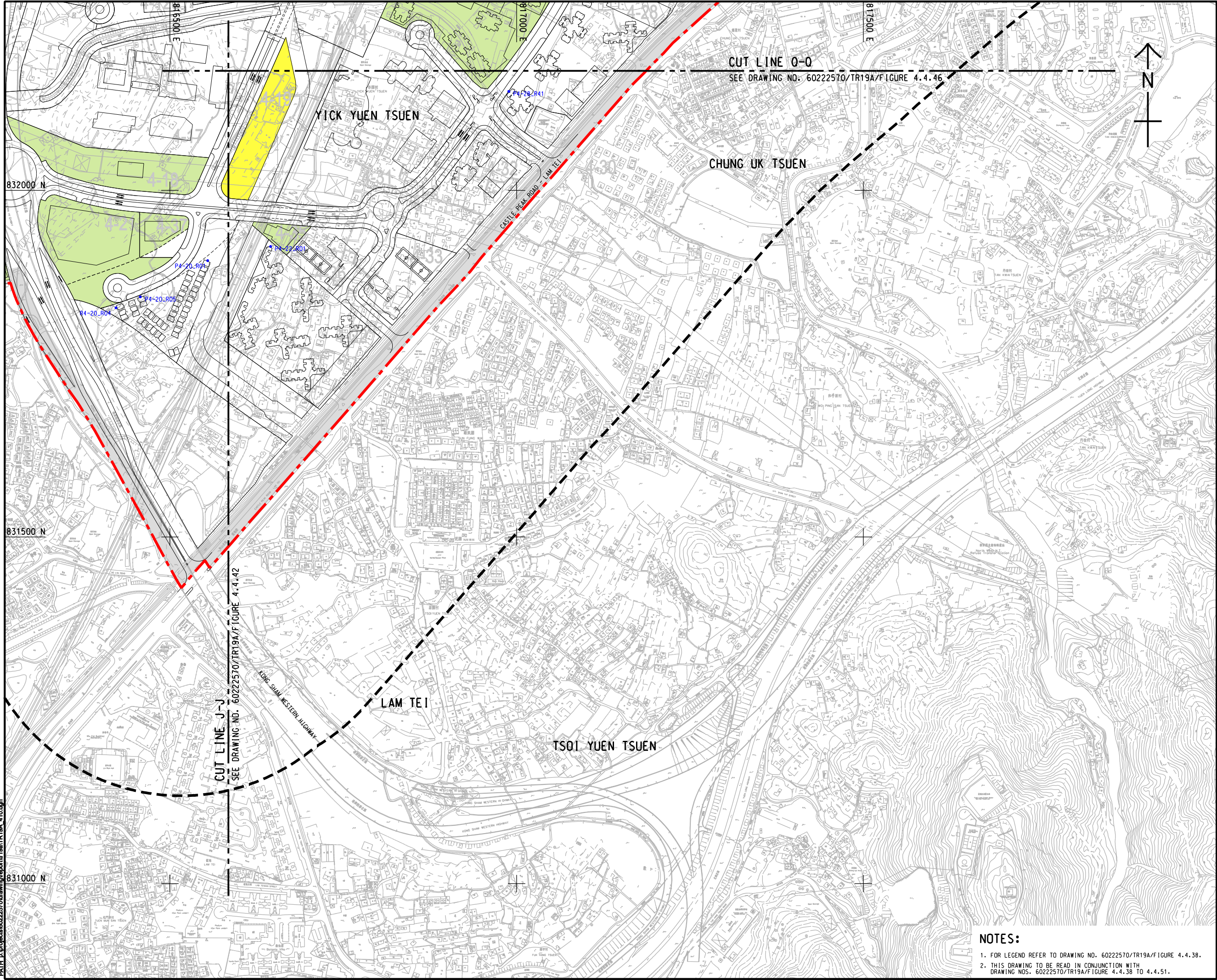
SHEET NUMBER
圖號

60222570/TR19A/FIGURE 4.4.46

ISO A1 564mm x 841mm



Pld File by: ZENGFX
PATH: F:\projects\6022570\drawing\report\19a\TR19A_410.dgn
ISO A1 594mm x 841mm
Approved:
Checked:
Designer:
Project Management Initials:



AECOM

PROJECT
項目

**HUNG SHUI KIU NEW
DEVELOPMENT AREA
PLANNING AND
ENGINEERING STUDY
- INVESTIGATION**

CLIENT
業主



土木工程拓展署
Civil Engineering and
Development Department



規劃署
Planning
Department

CONSULTANT
工程顧問公司

AECOM Asia Company Ltd.
www.aecom.com

SUB-CONSULTANTS
分判工程顧問公司

ISSUE/REVISION
發行

I/R 發行	DATE 日期	DESCRIPTION 內容摘要	CHK. 校核

STATUS
階段

SCALE
比例

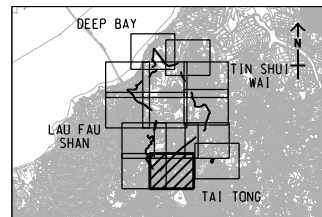
A3 1 : 5000

DIMENSION UNIT
尺寸單位

METRES

KEY PLAN
索引圖

A3 1 : 300000



PROJECT NO.
項目編號

60222570

AGREEMENT NO.
協議編號

CE2/2011 (CE)

SHEET TITLE
圖名

**LOCATIONS OF FIXED PLANT NOISE
SOURCES AND REPRESENTATIVE
NOISE SENSITIVE RECEIVERS**

SHEET 10 OF 14

SHEET NUMBER
圖號

60222570/TR19A/FIGURE 4.4.47

NOTES:

1. FOR LEGEND REFER TO DRAWING NO. 60222570/TR19A/FIGURE 4.4.38.
2. THIS DRAWING TO BE READ IN CONJUNCTION WITH
DRAWING NOS. 60222570/TR19A/FIGURE 4.4.38 TO 4.4.51.

This drawing has been prepared for the use of AECOM's client. It may not be used, modified, reproduced or relied upon by third parties, except as agreed by AECOM or as required by law. AECOM accepts no responsibility, and denies any liability whatsoever, to any party for loss or damage on this drawing without AECOM's express written consent. All measurements must be obtained from the related dimensions.

Pld File by: ZENGFX
PATH: P:\projects\6022570\drawing\pctrl\0a\TR19A_411.dgn

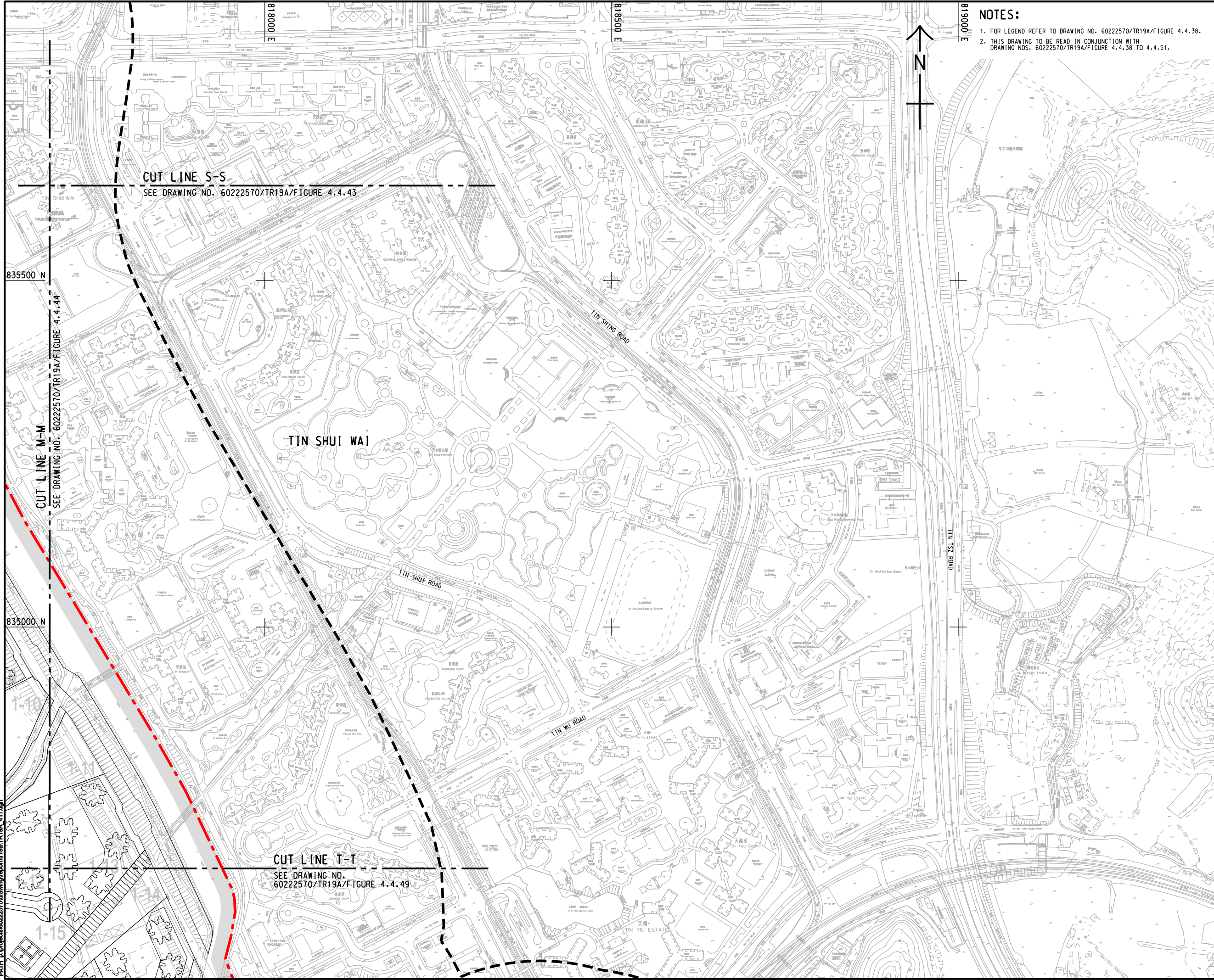
ISO A1 594mm x 841mm

Approved:

Checked:

Designer:

Project Management Initials:



NOTES:

1. FOR LEGEND REFER TO DRAWING NO. 6022570/TR19A/FIGURE 4.4.38.
2. THIS DRAWING TO BE READ IN CONJUNCTION WITH DRAWING NOS. 6022570/TR19A/FIGURE 4.4.38 TO 4.4.51.

AECOM

PROJECT

HUNG SHUI KIU NEW
DEVELOPMENT AREA
PLANNING AND
ENGINEERING STUDY
- INVESTIGATION

CLIENT



土木工程拓展署
Civil Engineering and
Development Department



規劃署
Planning
Department

CONSULTANT

AECOM Asia Company Ltd.
www.aecom.com

SUB-CONSULTANTS

分判工程顧問公司

ISSUE/REVISION

NO.	DATE	DESCRIPTION	CHK.

STATUS

SCALE

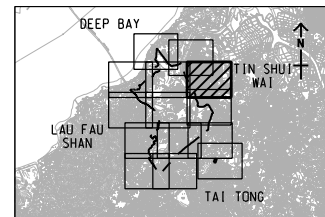
A3 1: 5000

KEY PLAN

DIMENSION UNIT

METRES

A3 1: 300000



PROJECT NO.

60222570

AGREEMENT NO.

CE2/2011 (CE)

SHEET TITLE

LOCATIONS OF FIXED PLANT NOISE
SOURCES AND REPRESENTATIVE
NOISE SENSITIVE RECEIVERS

SHEET 11 OF 14

SHEET NUMBER

60222570/TR19A/FIGURE 4.4.48

1. FOR LEGEND REFER TO DRAWING NO. 60222570/TR19A/FIGURE 4.4.38.
2. THIS DRAWING TO BE READ IN CONJUNCTION WITH
DRAWING NOS. 60222570/TR19A/FIGURE 4.4.38 TO 4.4.51.

HUNG SHUI KIU NEW DEVELOPMENT AREA PLANNING AND ENGINEERING STUDY - INVESTIGATION

土木工程拓展署
Civil Engineering and
Development Department

規劃署
Planning
Department

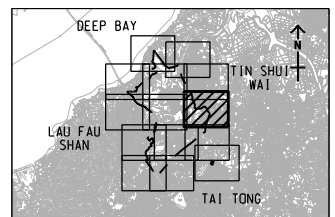
AECOM Asia Company Ltd.
www.aecom.com

I/R 條目	DATE 日期	DESCRIPTION 內容摘要	CHK. 檢核
-----------	------------	---------------------	------------

A3 1 : 5000

METRES

KEY PLAN A3 1 : 300000



6022570

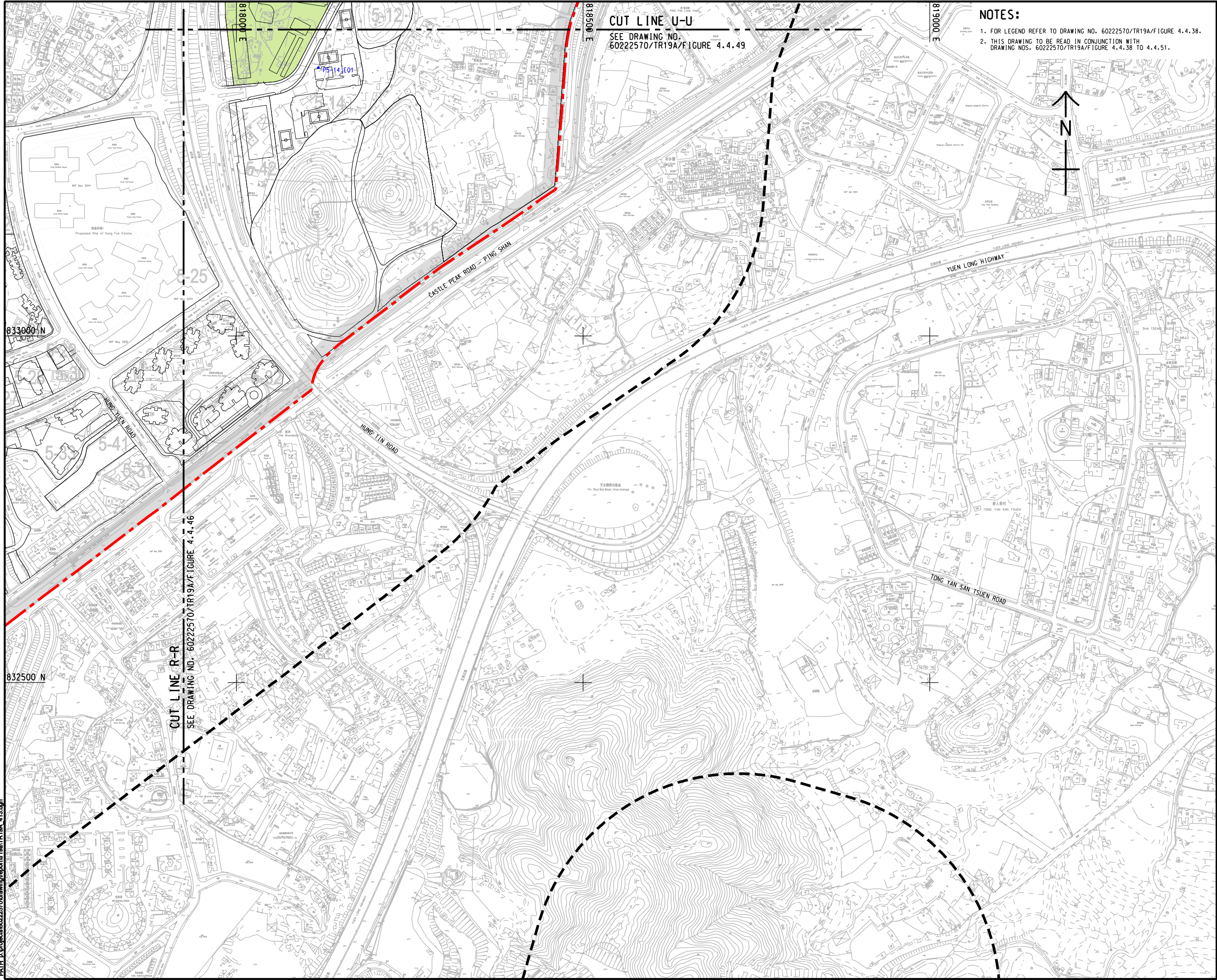
CE2/2011 (CE)

LOCATIONS OF FIXED PLANT NOISE SOURCES AND REPRESENTATIVE NOISE SENSITIVE RECEIVERS

SHEET 12 OF 14

60222570/TR19A/FIGURE 4.4.49

ISO A1 594mm x 841mm
Approved:
Checked:
Designer:
Project Management Initials:
Pld File by: ZENGFX
PATH: P:\projects\60222570\drawing\pcenter\0a1\TR19A_413.dgn



CUT LINE U-U
SEE DRAWING NO.
60222570/TR19A/FIGURE 4.4.49

- NOTES:
1. FOR LEGEND REFER TO DRAWING NO. 60222570/TR19A/FIGURE 4.4.38.
 2. THIS DRAWING TO BE READ IN CONJUNCTION WITH
DRAWING NOS. 60222570/TR19A/FIGURE 4.4.38 TO 4.4.51.

AECOM

PROJECT
項目

**HUNG SHUI KIU NEW
DEVELOPMENT AREA
PLANNING AND
ENGINEERING STUDY
- INVESTIGATION**

CLIENT
業主

CEDD
土木 工程 拓展 署
Civil Engineering and
Development Department

**Planning
Department**

CONSULTANT
工程顧問公司

AECOM Asia Company Ltd.
www.aecom.com

SUB-CONSULTANTS
分判工程顧問公司

ISSUE/REVISION
發行

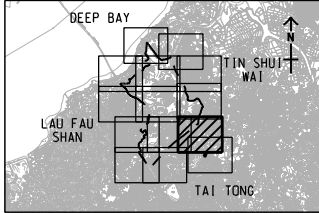
IR 發行	DATE 日期	DESCRIPTION 內容摘要	CHK. 校核

STATUS
階段

SCALE
比例

A3 1 : 5000

KEY PLAN A3 1 : 300000



PROJECT NO.
項目編號

60222570

SHEET TITLE
圖紙名稱

LOCATIONS OF FIXED PLANT NOISE
SOURCES AND REPRESENTATIVE
NOISE SENSITIVE RECEIVERS

SHEET NUMBER
圖紙編號

60222570/TR19A/FIGURE 4.4.50

This drawing has been prepared for the use of AECOM's client. It may not be used, modified, reproduced or relied upon by third parties, except as agreed by AECOM or as required by law. AECOM accepts no responsibility, and denies any liability whatsoever, to any party that uses or relies on this drawing without AECOM's express written consent. All measurements must be obtained from the related dimensions.

Pld File by: ZENGFX
PATH: F:\projects\60222570\drawing\p\center\0a\TR19A_414.dgn

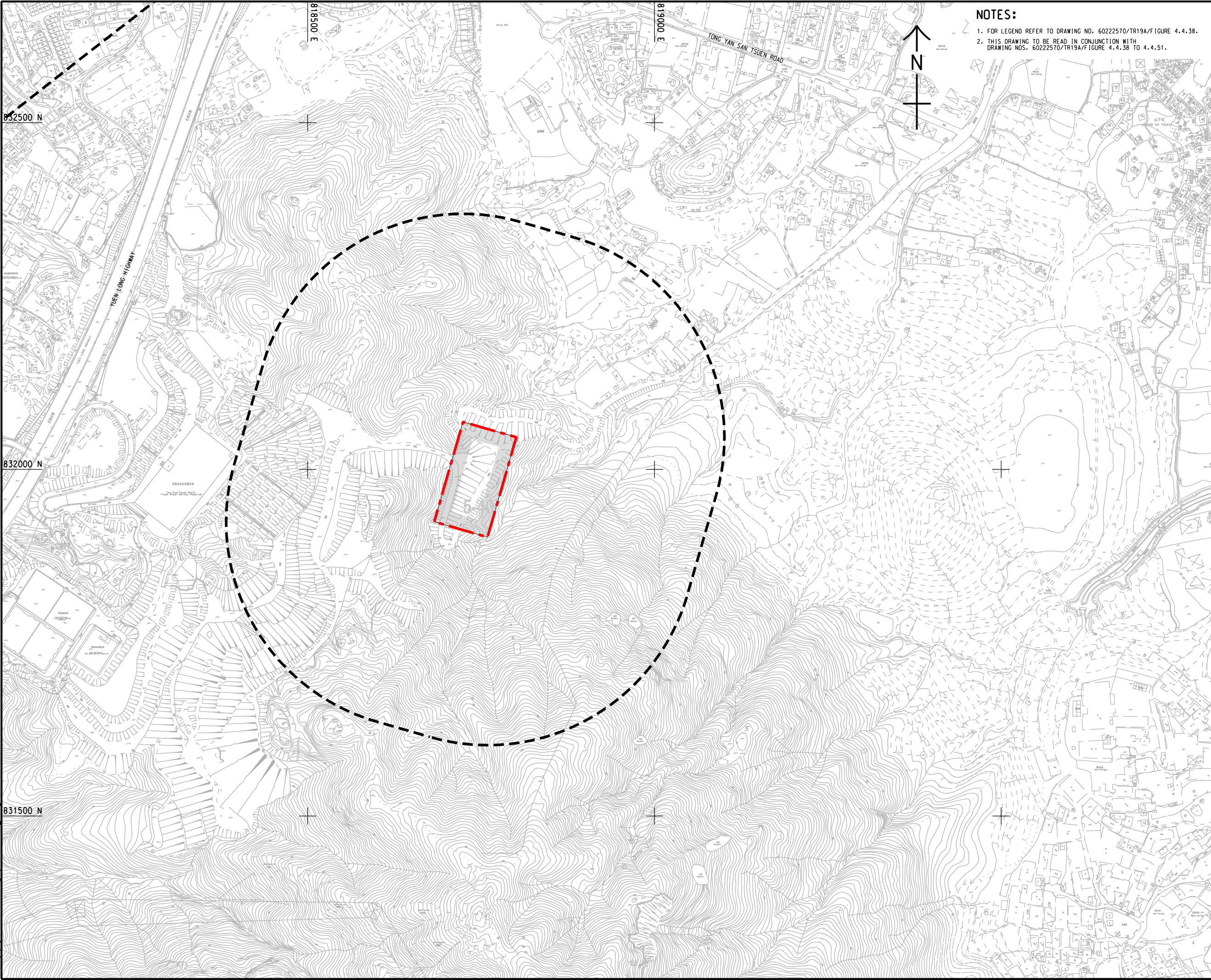
ISO A1 594mm x 841mm

Approved:

Checked:

Designer:

Project Management Initials:



NOTES:

1. FOR LEGEND REFER TO DRAWING NO. 60222570/TR19A/FIGURE 4.4.38.


2. THIS DRAWING TO BE READ IN CONJUNCTION WITH DRAWING NOS. 60222570/TR19A/FIGURE 4.4.38 TO 4.4.51.

AECOM


PROJECT
項目

HUNG SHUI KIU NEW DEVELOPMENT AREA PLANNING AND ENGINEERING STUDY - INVESTIGATION

CLIENT
業主



土木工程拓展署
Civil Engineering and Development Department



規劃署
Planning Department

CONSULTANT
工程顧問公司

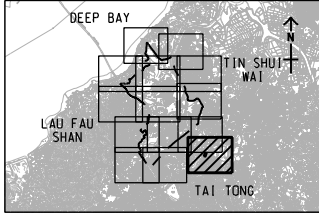
AECOM Asia Company Ltd.
www.aecom.com

SUB-CONSULTANTS
分判工程顧問公司

ISSUE/REVISION 修訂			
I/R 修訂	DATE 日期	DESCRIPTION 內容摘要	CHK. 校核

STATUS
階段

SCALE 比例	DIMENSION UNIT 尺寸單位
A3 1 : 5000	METRES
KEY PLAN 索引圖	A3 1 : 300000



PROJECT NO.
項目編號

60222570

AGREEMENT NO.
協議編號

CE2/2011 (CE)

SHEET TITLE
圖紙名稱

LOCATIONS OF FIXED PLANT NOISE SOURCES AND REPRESENTATIVE NOISE SENSITIVE RECEIVERS

SHEET 14 OF 14

SHEET NUMBER
圖紙編號

60222570/TR19A/FIGURE 4.4.51