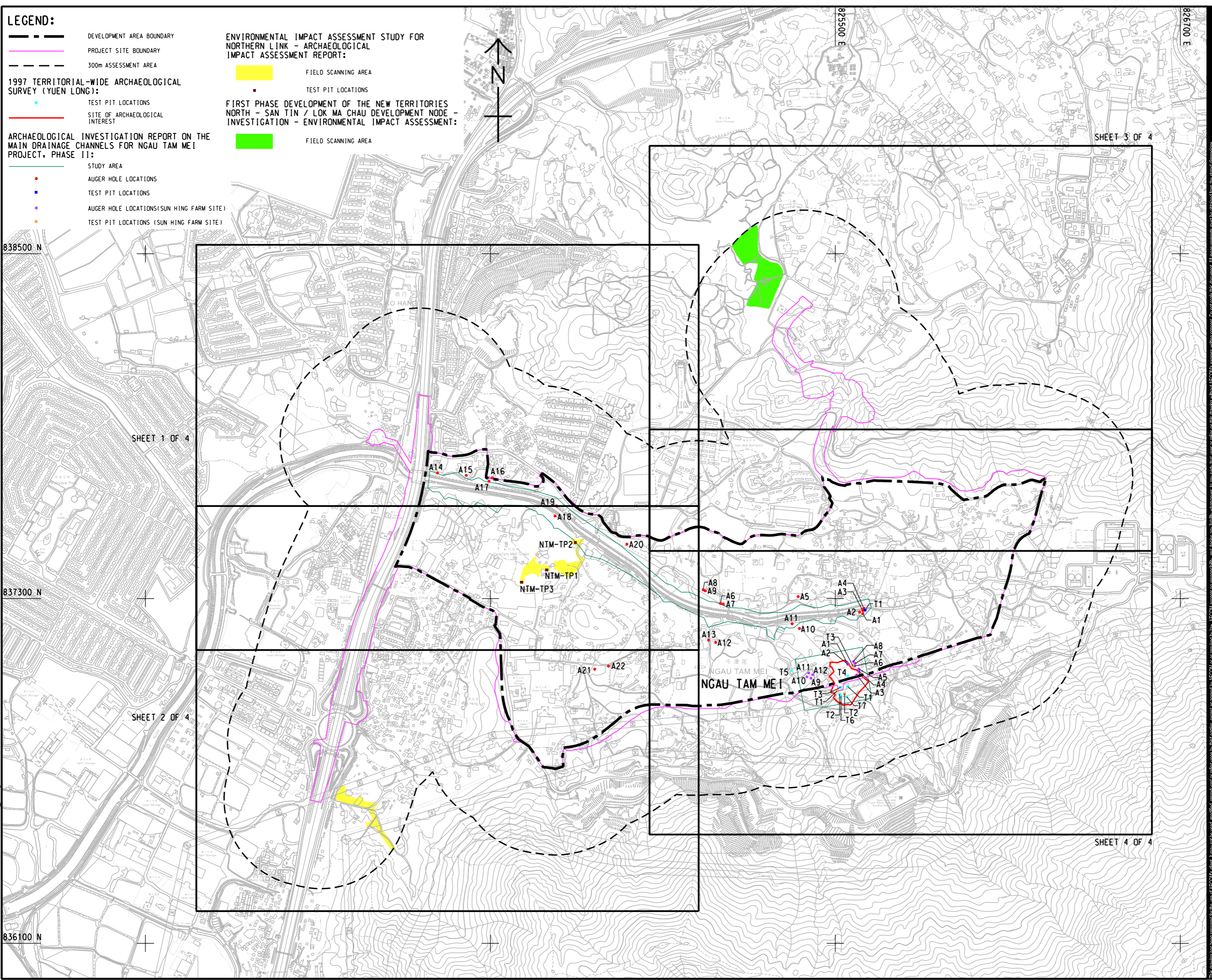


V:\BAKU\US95-BAKU\GISWP\pldtriv\Create PH file\new\CSWP-75\color\pht
 Plot File by: iuying 2025/9/11
 PATH P:\PROJECTS\60672559\DRAWING\REPORT\R23\F23_615.dgn



- LEGEND:**
- DEVELOPMENT AREA BOUNDARY
 - PROJECT SITE BOUNDARY
 - 300m ASSESSMENT AREA
- 1997 TERRITORIAL-WIDE ARCHAEOLOGICAL SURVEY (YUEN LONG):**
- TEST PIT LOCATIONS
 - SITE OF ARCHAEOLOGICAL INTEREST
- ARCHAEOLOGICAL INVESTIGATION REPORT ON THE MAIN DRAINAGE CHANNELS FOR NGAU TAM MEI PROJECT, PHASE II:**
- STUDY AREA
 - AUGER HOLE LOCATIONS
 - TEST PIT LOCATIONS
 - AUGER HOLE LOCATIONS(SUN HING FARM SITE)
 - TEST PIT LOCATIONS (SUN HING FARM SITE)

- ENVIRONMENTAL IMPACT ASSESSMENT STUDY FOR NORTHERN LINK - ARCHAEOLOGICAL IMPACT ASSESSMENT REPORT:**
- FIELD SCANNING AREA
 - TEST PIT LOCATIONS
- FIRST PHASE DEVELOPMENT OF THE NEW TERRITORIES NORTH - SAN TIN / LOK MA CHAU DEVELOPMENT NODE - INVESTIGATION - ENVIRONMENTAL IMPACT ASSESSMENT:**
- FIELD SCANNING AREA

AECOM

PROJECT
LAND USE REVIEW STUDY FOR NGAU TAM MEI AREA - FEASIBILITY STUDY

CLIENT
 土木工程拓展署
 Civil Engineering and Development Department
 規劃署
 Planning Department

CONSULTANT
 AECOM Asia Company Ltd.
 www.aecom.com

SUB-CONSULTANTS

ISSUE/REVISION

NO.	DATE	DESCRIPTION	CHK.

STATUS

SCALE **DIMENSION UNIT**

A3 1: 12000 METRES

KEY PLAN

PROJECT NO. **AGREEMENT NO.**

60672559 CE 33/2021

SHEET TITLE

PREVIOUS ARCHAEOLOGICAL WORKS CONDUCTED WITHIN ASSESSMENT AREA (KEY PLAN)

SHEET NUMBER

60672559/R23/FIGURE 12.5

This drawing has been prepared for the use of AECOM's client. It may not be used, modified, reproduced or relied upon by third parties, except as agreed by AECOM or as required by law. AECOM accepts no responsibility, and disclaims any liability, whatsoever, to any party, that uses or relies on this drawing without AECOM's express written consent. All measurements must be obtained from the stated dimensions.

V:\BAKU\US55-BAK\GIS\WP\p\dtdr\Create PH file\new\CSWP-75\color\pht
 Plot File by: iu.ying 2025/9/11
 PATH: P:\PROJECTS\60672559\DRAWING\REPORT\R23\R23_616.dgn
 ISO A1 594mm x 841mm
 Approved: _____
 Checked: _____
 Designer: _____
 Project Management Initials: _____

NOTE:
 1. THIS DRAWING TO BE READ IN CONJUNCTION WITH
 DRAWING NOS. 60672559/R23/FIGURE 12.5.1 TO 12.5.4.

LEGEND:

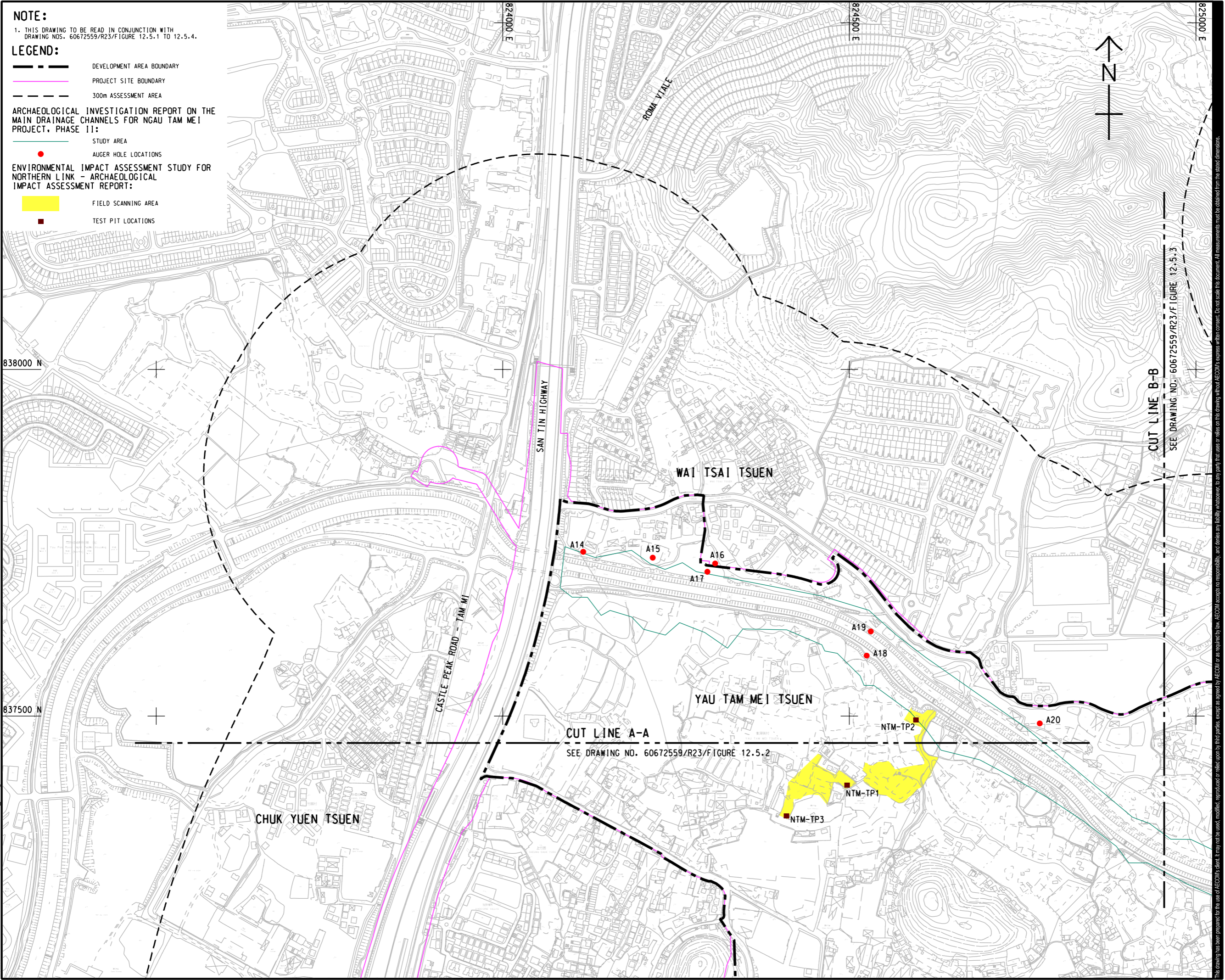
- DEVELOPMENT AREA BOUNDARY
- PROJECT SITE BOUNDARY
- 300m ASSESSMENT AREA

**ARCHAEOLOGICAL INVESTIGATION REPORT ON THE
 MAIN DRAINAGE CHANNELS FOR NGAU TAM MEI
 PROJECT, PHASE II:**

- STUDY AREA
- AUGER HOLE LOCATIONS

**ENVIRONMENTAL IMPACT ASSESSMENT STUDY FOR
 NORTHERN LINK - ARCHAEOLOGICAL
 IMPACT ASSESSMENT REPORT:**

- FIELD SCANNING AREA
- TEST PIT LOCATIONS



AECOM

PROJECT
 項目
**LAND USE REVIEW STUDY
 FOR NGAU TAM MEI AREA
 - FEASIBILITY STUDY**

CLIENT
 業主
土木工程拓展署
 Civil Engineering and
 Development Department
規劃署
 Planning Department

CONSULTANT
 工程顧問公司
 AECOM Asia Company Ltd.
 www.aecom.com

SUB-CONSULTANTS
 分判工程師/顧問公司

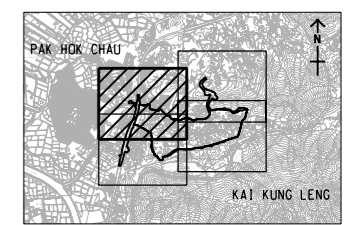
ISSUE/REVISION
 修訂

IR	DATE	DESCRIPTION	CHK.

STATUS
 階段

SCALE **DIMENSION UNIT**
 比例 尺寸單位
 A3 1:5000 METRES

KEY PLAN A3 1:150000
 索引圖



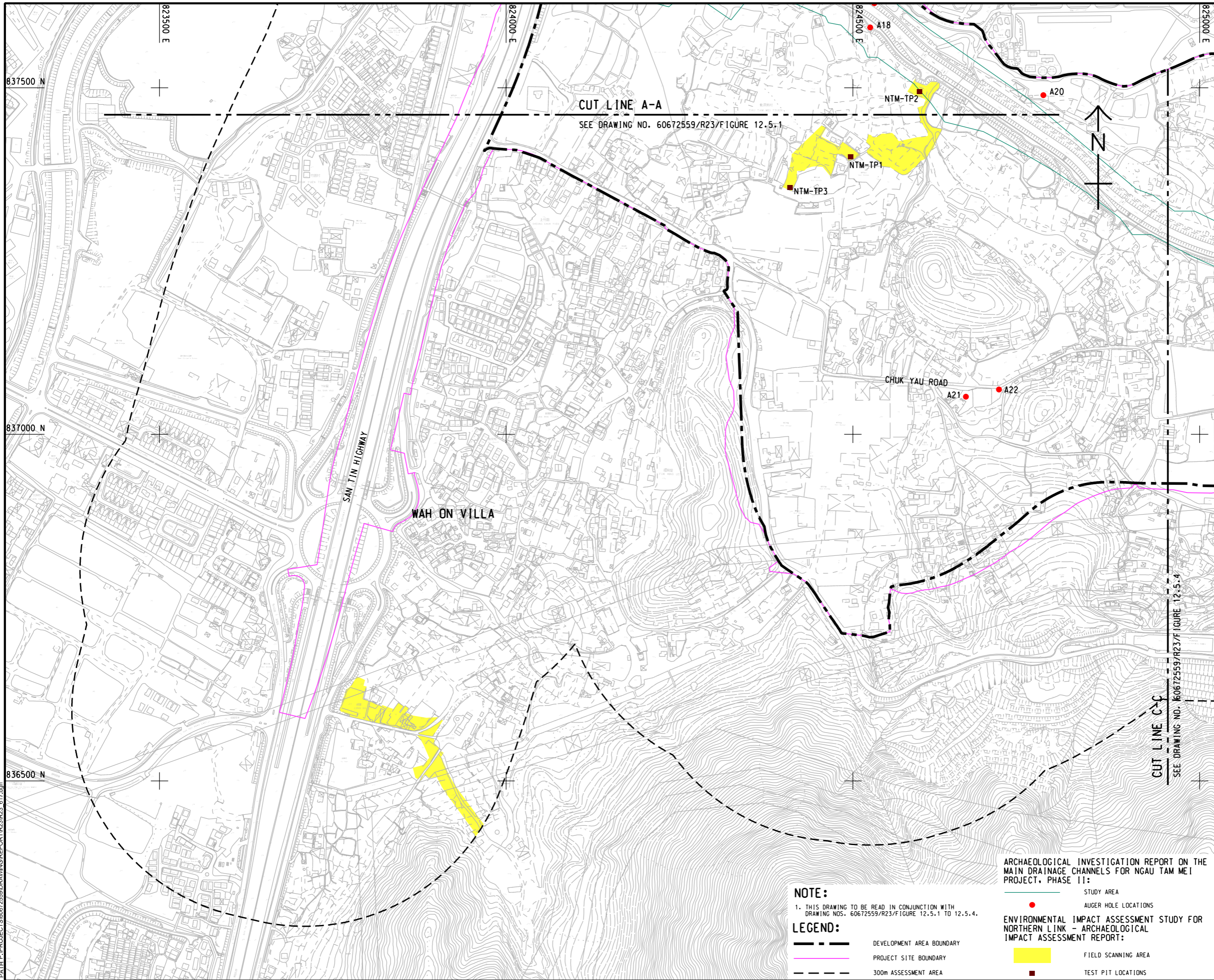
PROJECT NO. **AGREEMENT NO.**
 項目編號 協議編號
 60672559 CE 33/2021

SHEET TITLE
 圖紙名稱
 PREVIOUS ARCHAEOLOGICAL
 WORKS CONDUCTED WITHIN
 ASSESSMENT AREA

SHEET NUMBER
 圖紙編號
 60672559/R23/FIGURE 12.5.1

This drawing has been prepared for the use of AECOM's client. It may not be used, modified, reproduced or relied upon by third parties, except as agreed by AECOM or as required by law. AECOM accepts no responsibility, and disclaims any liability whatsoever, to any party that uses or relies on this drawing without AECOM's express written consent. All measurements must be obtained from the stated dimensions.

V:\BAKU\US55-BAK\CSWP\p1dtriv\Create PH file\new\CSWP-75\color\p1dtriv\Plot File by: iuyang 2025/9/11 10:25:59\DRAWING\REPORT\R23\R23_617.dgn
 ISO A1 594mm x 841mm
 Approved:
 Checked:
 Designer:
 Project Management Initials:



NOTE:
 1. THIS DRAWING TO BE READ IN CONJUNCTION WITH DRAWING NOS. 60672559/R23/FIGURE 12.5.1 TO 12.5.4.

LEGEND:

- DEVELOPMENT AREA BOUNDARY
- PROJECT SITE BOUNDARY
- 300m ASSESSMENT AREA

ARCHAEOLOGICAL INVESTIGATION REPORT ON THE MAIN DRAINAGE CHANNELS FOR NGAU TAM MEI PROJECT, PHASE II:

- AUGER HOLE LOCATIONS
- FIELD SCANNING AREA
- TEST PIT LOCATIONS



PROJECT
 項目
 LAND USE REVIEW STUDY FOR NGAU TAM MEI AREA - FEASIBILITY STUDY

CLIENT
 業主
土木工程拓展署
 Civil Engineering and Development Department
規劃署
 Planning Department

CONSULTANT
 土庫顧問公司
 AECOM Asia Company Ltd.
 www.aecom.com

SUB-CONSULTANTS
 分判土庫顧問公司

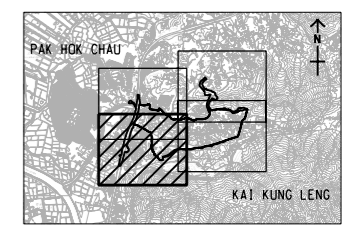
ISSUE/REVISION
 修訂

I/R	DATE	DESCRIPTION	CHK.

STATUS
 階段

SCALE
 比例
 A3 1:5000

DIMENSION UNIT
 尺寸單位
 METRES



PROJECT NO.
 項目編號
 60672559

AGREEMENT NO.
 協議編號
 CE 33/2021

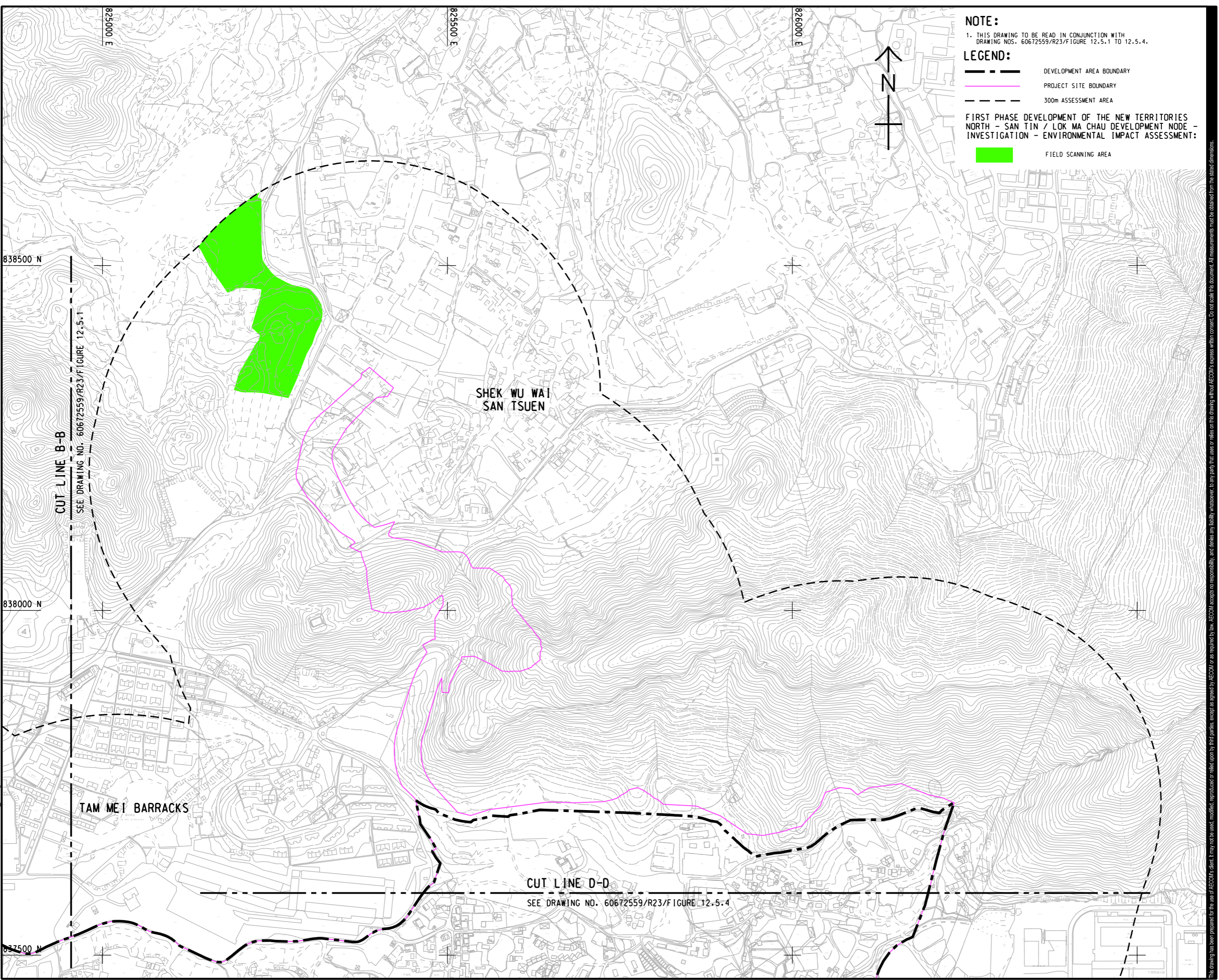
SHEET TITLE
 圖紙名稱
 PREVIOUS ARCHAEOLOGICAL WORKS CONDUCTED WITHIN ASSESSMENT AREA

SHEET 2 OF 4

SHEET NUMBER
 圖紙編號
 60672559/R23/FIGURE 12.5.2

This drawing has been prepared for the use of AECOM's client. It may not be used, modified, reproduced or relied upon by third parties, except as agreed by AECOM or as required by law. AECOM accepts no responsibility, and disclaims any liability whatsoever, for any part, that less or relies on this drawing without AECOM's express written consent. All measurements must be obtained from the stated dimensions.

V:\BAKU\US55-BAK\CSWP\p1dtdrv\Create PH file\new\CSWP-75\color\p1d
 Plot File by: iuying 2025/7/24
 PATH: P:\PROJECTS\60672559\DRAWING\REPORT\R23\R23_618.dgn



NOTE:
 1. THIS DRAWING TO BE READ IN CONJUNCTION WITH DRAWING NOS. 60672559/R23/Figure 12.5.1 TO 12.5.4.

LEGEND:
 - - - - - DEVELOPMENT AREA BOUNDARY
 _____ PROJECT SITE BOUNDARY
 - - - - - 300m ASSESSMENT AREA
 ■■■■■ FIELD SCANNING AREA

FIRST PHASE DEVELOPMENT OF THE NEW TERRITORIES NORTH - SAN TIN / LOK MA CHAU DEVELOPMENT NODE - INVESTIGATION - ENVIRONMENTAL IMPACT ASSESSMENT:



PROJECT
 項目
 LAND USE REVIEW STUDY FOR NGAU TAM MEI AREA - FEASIBILITY STUDY

CLIENT
 業主
 土木工程拓展署
 Civil Engineering and Development Department
 規劃署
 Planning Department

CONSULTANT
 土庫顧問公司
 AECOM Asia Company Ltd.
 www.aecom.com

SUB-CONSULTANTS
 分判土庫顧問公司

ISSUE/REVISION
 修訂

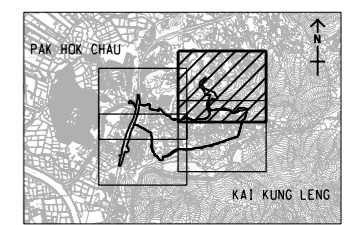
IR	DATE	DESCRIPTION	CHK.

STATUS
 階段

SCALE
 比例
 A3 1 : 5000

DIMENSION UNIT
 尺寸單位
 METRES

KEY PLAN A3 1 : 150000
 索引圖



PROJECT NO.
 項目編號
 60672559

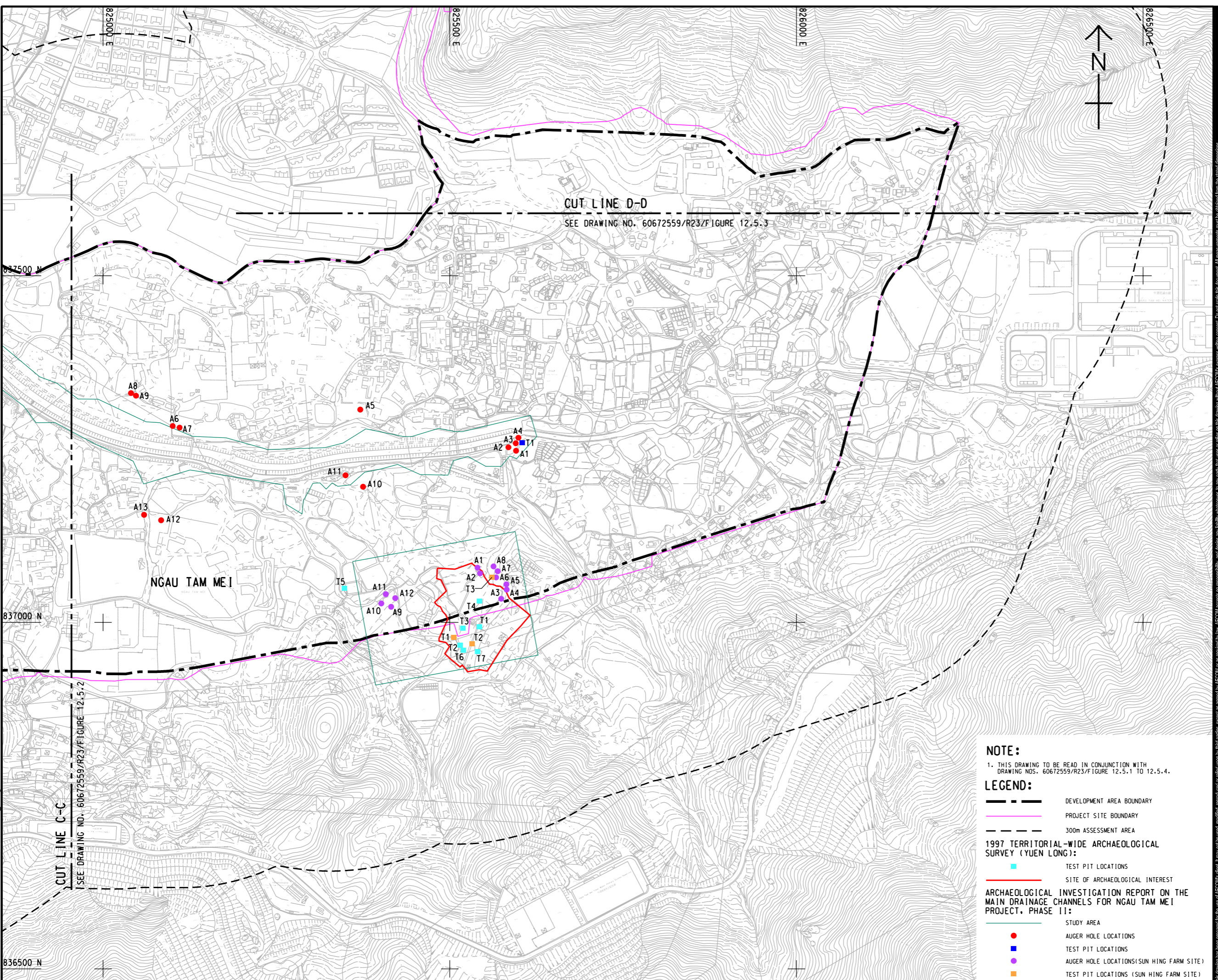
AGREEMENT NO.
 協議編號
 CE 33/2021

SHEET TITLE
 圖紙名稱
 PREVIOUS ARCHAEOLOGICAL WORKS CONDUCTED WITHIN ASSESSMENT AREA

SHEET NUMBER
 圖紙編號
 60672559/R23/FIGURE 12.5.3

SHEET 3 OF 4

V:\BAKU\US5-BAK\CSWP\p1dtdr\Create PH file\new\CSWP-75\color.plt
 Plot File by: iuyang 2025/7/24
 PATH: P:\PROJECTS\60672559\DRAWING\REPORT\R23\R23_618.dgn
 ISO A1 594mm x 841mm
 Approved:
 Checked:
 Designer:
 Project Management Initials:



AECOM

PROJECT
LAND USE REVIEW STUDY FOR NGAU TAM MEI AREA - FEASIBILITY STUDY

CLIENT
 土木工程拓展署
 Civil Engineering and Development Department
 規劃署
 Planning Department

CONSULTANT
 AECOM Asia Company Ltd.
 www.aecom.com

SUB-CONSULTANTS

ISSUE/REVISION

IR	DATE	DESCRIPTION	CHK.

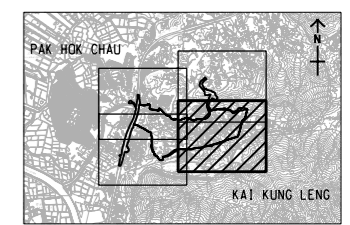
STATUS

SCALE **DIMENSION UNIT**

比例 公尺/呎

A3 1:5000 METRES

KEY PLAN A3 1:150000



- NOTE:**
- THIS DRAWING TO BE READ IN CONJUNCTION WITH DRAWING NOS. 60672559/R23/FIGURE 12.5.1 TO 12.5.4.
- LEGEND:**
- DEVELOPMENT AREA BOUNDARY
 - PROJECT SITE BOUNDARY
 - 300m ASSESSMENT AREA
 - 1997 TERRITORIAL-WIDE ARCHAEOLOGICAL SURVEY (YUEN LONG): TEST PIT LOCATIONS
 - SITE OF ARCHAEOLOGICAL INTEREST
 - ARCHAEOLOGICAL INVESTIGATION REPORT ON THE MAIN DRAINAGE CHANNELS FOR NGAU TAM MEI PROJECT, PHASE II: AUGER HOLE LOCATIONS
 - TEST PIT LOCATIONS
 - AUGER HOLE LOCATIONS (SUN HING FARM SITE)
 - TEST PIT LOCATIONS (SUN HING FARM SITE)

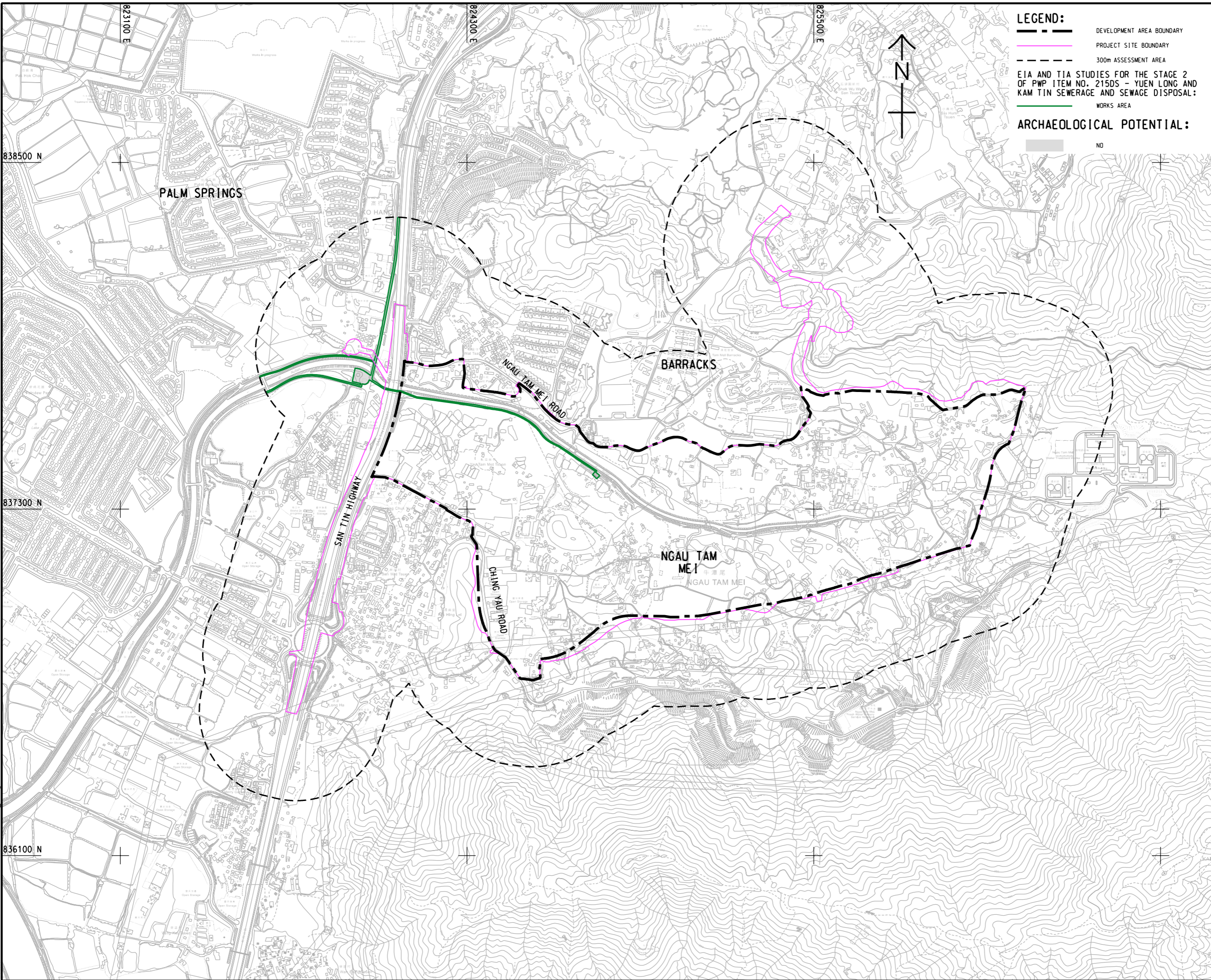
PROJECT NO. **AGREEMENT NO.**
60672559 CE 33/2021

SHEET TITLE
PREVIOUS ARCHAEOLOGICAL WORKS CONDUCTED WITHIN ASSESSMENT AREA

SHEET NUMBER
60672559/R23/FIGURE 12.5.4

SHEET 4 OF 4

This drawing has been prepared for the use of AECOM's client. It may not be used, modified, reproduced or relied upon by third parties, except as agreed by AECOM or as required by law. AECOM accepts no responsibility, and disclaims any liability whatsoever, for any part, in whole or in part, that is used or relied on in this drawing without AECOM's express written consent. All measurements must be obtained from the stated dimensions.



LEGEND:

- DEVELOPMENT AREA BOUNDARY
- PROJECT SITE BOUNDARY
- 300m ASSESSMENT AREA
- WORKS AREA

ARCHAEOLOGICAL POTENTIAL:

NO



PROJECT

LAND USE REVIEW STUDY
FOR NGAU TAM MEI AREA
- FEASIBILITY STUDY

CLIENT



CONSULTANT

AECOM Asia Company Ltd.
www.aecom.com

SUB-CONSULTANTS

ISSUE/REVISION

IR	DATE	DESCRIPTION	CHK.

STATUS

SCALE

A3 1: 12000

DIMENSION UNIT

METRES

KEY PLAN

PROJECT NO.

60672559

AGREEMENT NO.

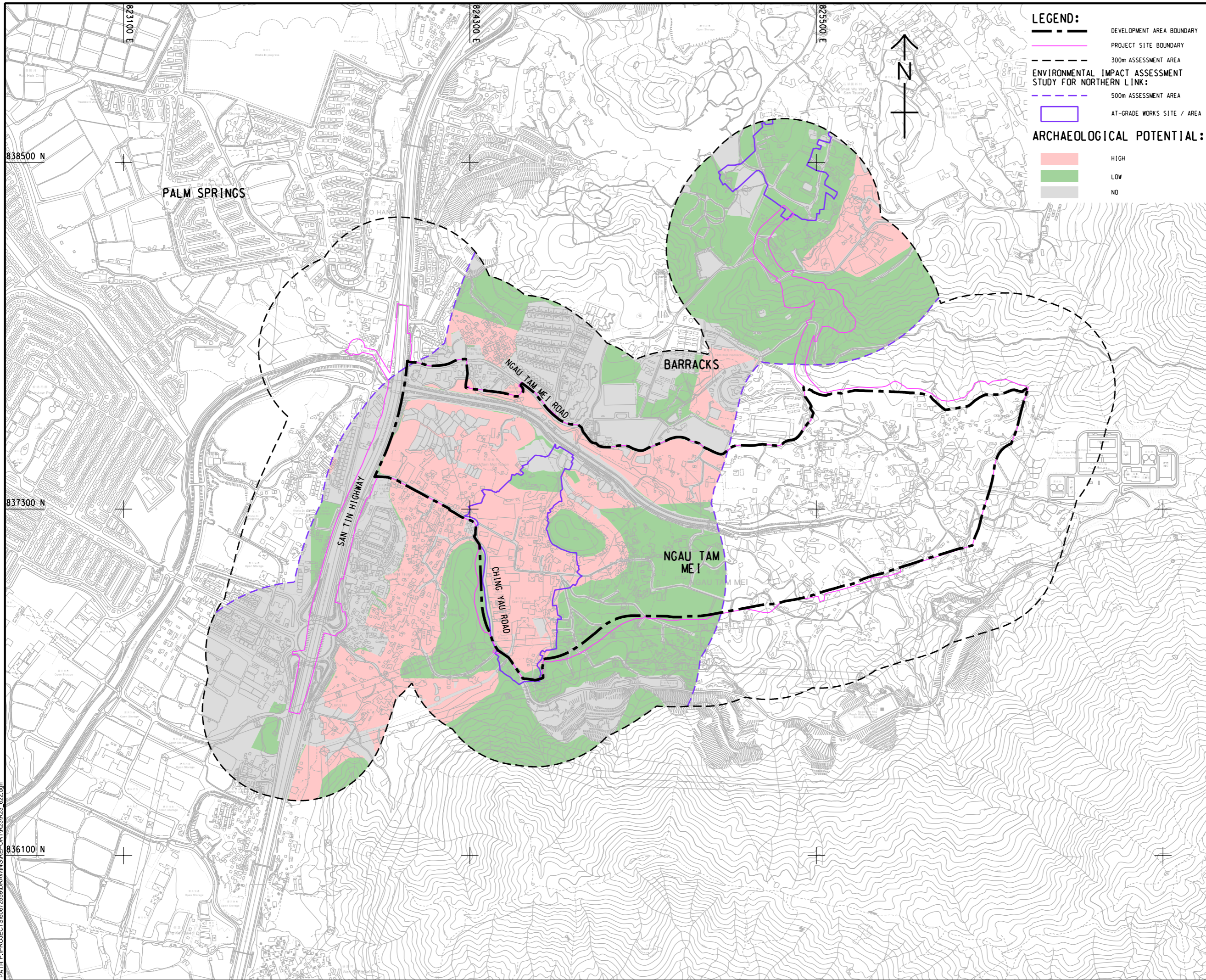
CE 33/2021

SHEET TITLE

ASSESSED ARCHAEOLOGICAL
POTENTIAL AREA PRIOR TO
THIS STUDY (1)

SHEET NUMBER

60672559/R23/FIGURE 12.6.1



LEGEND:

- DEVELOPMENT AREA BOUNDARY
- PROJECT SITE BOUNDARY
- 300m ASSESSMENT AREA
- ENVIRONMENTAL IMPACT ASSESSMENT STUDY FOR NORTHERN LINK:
- 500m ASSESSMENT AREA
- AT-GRADE WORKS SITE / AREA

ARCHAEOLOGICAL POTENTIAL:

- HIGH
- LOW
- NO



PROJECT

LAND USE REVIEW STUDY
FOR NGAU TAM MEI AREA
- FEASIBILITY STUDY

CLIENT



CONSULTANT

AECOM Asia Company Ltd.
www.aecom.com

SUB-CONSULTANTS

ISSUE/REVISION

IR	DATE	DESCRIPTION	CHK.

STATUS

SCALE **DIMENSION UNIT**

A3 1 : 12000 METRES

KEY PLAN

PROJECT NO. **AGREEMENT NO.**

60672559 CE 33/2021

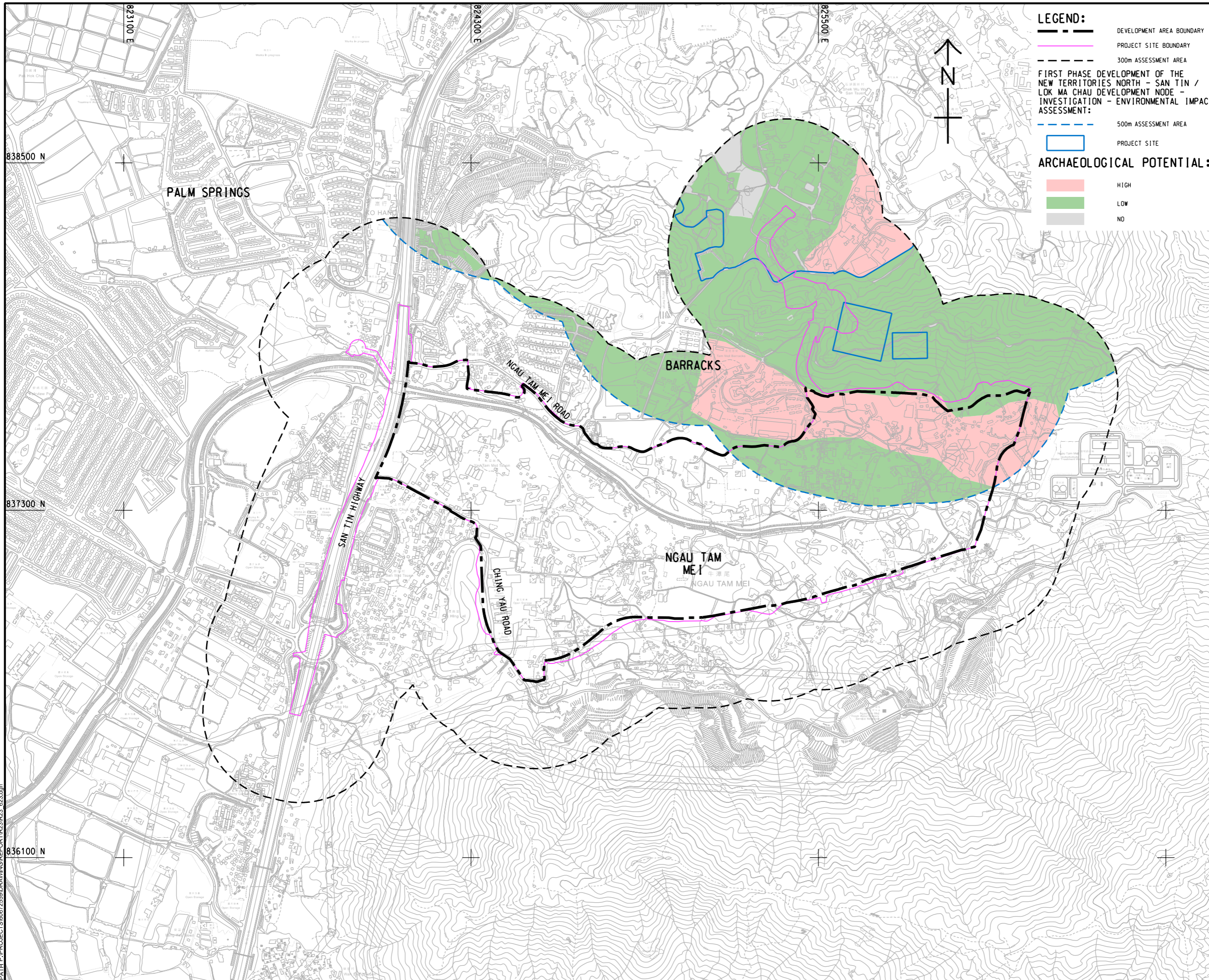
SHEET TITLE

ASSESSED ARCHAEOLOGICAL
POTENTIAL AREA PRIOR TO
THIS STUDY (2)

SHEET NUMBER

60672559/R23/FIGURE 12.6.2

V:\BAKU\US95-BAK\CSWP\p1dtriv\Create PH file\new\CSWP-75\color1.pht
 Plot File by: iu.yang 2025/7/29
 PATH: P:\PROJECTS\60672559\DRAWING\REPORT\R23\R23_623.dgn
 ISO A1 594mm x 841mm
 Approved:
 Checked:
 Designer:
 Project Management Initials:



LEGEND:

- DEVELOPMENT AREA BOUNDARY
- PROJECT SITE BOUNDARY
- 300m ASSESSMENT AREA
- 500m ASSESSMENT AREA
- PROJECT SITE

FIRST PHASE DEVELOPMENT OF THE NEW TERRITORIES NORTH - SAN TIN / LOK MA CHAU DEVELOPMENT NODE - INVESTIGATION - ENVIRONMENTAL IMPACT ASSESSMENT:

ARCHAEOLOGICAL POTENTIAL:

- HIGH
- LOW
- NO

AECOM

PROJECT
 LAND USE REVIEW STUDY FOR NGAU TAM MEI AREA - FEASIBILITY STUDY

CLIENT
 土木工程拓展署
 Civil Engineering and Development Department
 規劃署
 Planning Department

CONSULTANT
 AECOM Asia Company Ltd.
 www.aecom.com

SUB-CONSULTANTS

ISSUE/REVISION

NO.	DATE	DESCRIPTION	CHK.

STATUS
 備案

SCALE
 比例 1:12000

DIMENSION UNIT
 尺寸單位 METRES

KEY PLAN
 索引圖

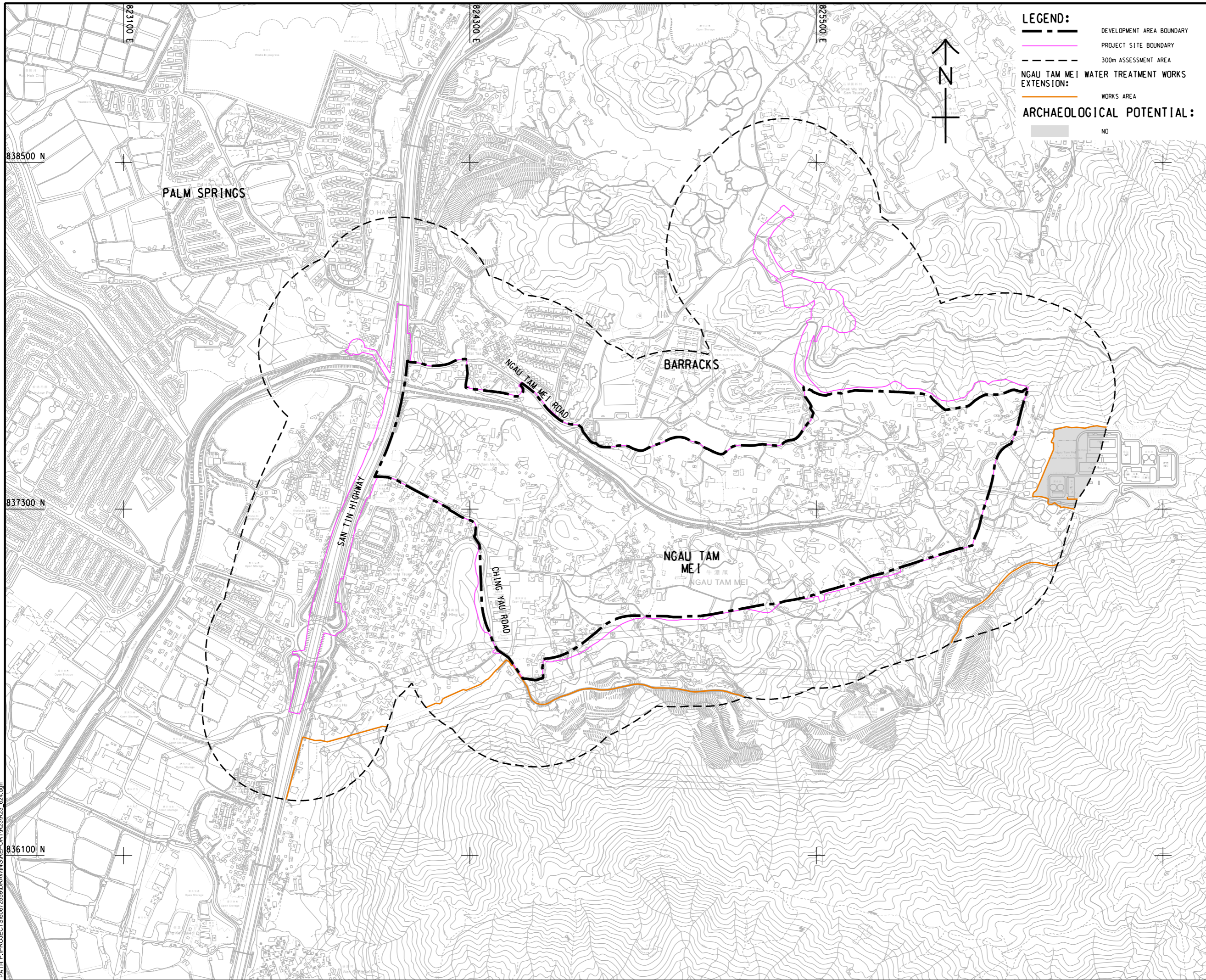
PROJECT NO.
 項目編號 60672559

AGREEMENT NO.
 協議編號 CE 33/2021

SHEET TITLE
 圖紙名稱 ASSESSED ARCHAEOLOGICAL POTENTIAL AREA PRIOR TO THIS STUDY (3)

SHEET NUMBER
 圖紙編號 60672559/R23/FIGURE 12.6.3

This drawing has been prepared for the use of AECOM's client. It may not be used, modified, reproduced or relied upon by third parties, except as agreed by AECOM or as required by law. AECOM accepts no responsibility, and disclaims any liability, whatsoever, for any part, that is used or relied on in this drawing without AECOM's express written consent. All measurements must be obtained from the stated dimensions.



LEGEND:

- DEVELOPMENT AREA BOUNDARY
- PROJECT SITE BOUNDARY
- 300m ASSESSMENT AREA
- NGAU TAM MEI WATER TREATMENT WORKS EXTENSION:
- WORKS AREA

ARCHAEOLOGICAL POTENTIAL:

- NO



ISSUE/REVISION

IR	DATE	DESCRIPTION	CHK.

STATUS

SCALE DIMENSION UNIT

A3 1: 12000 METRES

KEY PLAN

PROJECT NO. AGREEMENT NO.

60672559 CE 33/2021

SHEET TITLE

ASSESSED ARCHAEOLOGICAL
POTENTIAL AREA PRIOR TO
THIS STUDY (4)

SHEET NUMBER

60672559/R23/FIGURE 12.6.4