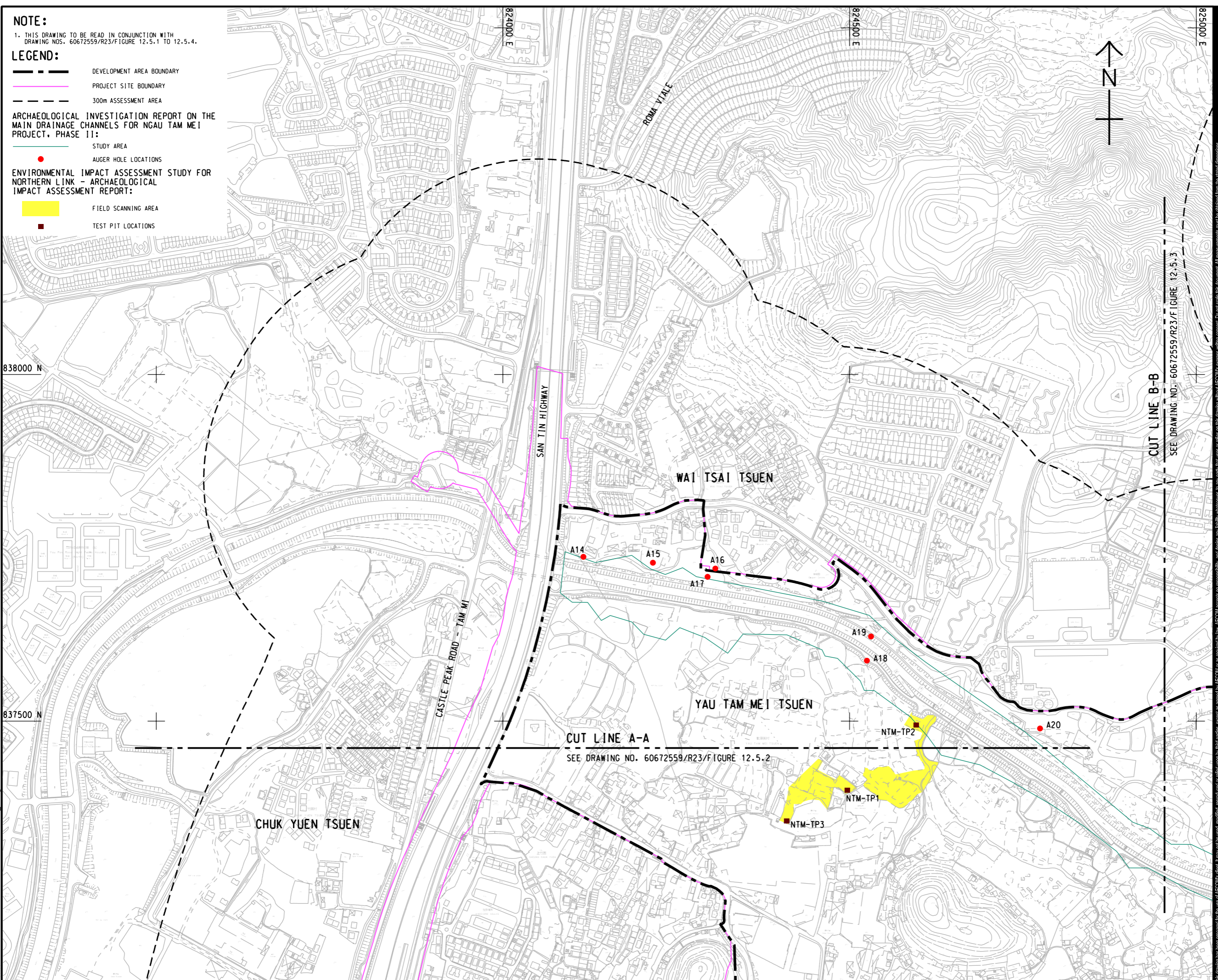


V:\BAKU\US55-BAK\GIS\WP\p1\dwg\Create PH file\new\CSWP-75\color\p1
 Plot File by: iuying 2025/9/11
 PATH P:\PROJECTS\60672559\DRAWING\REPORT\R23\F\FIGURE 12.5.1.dgn
 ISO A1 594mm x 841mm
 Approved: _____
 Checked: _____
 Designer: _____
 Project Management Initials: _____



NOTE:
 1. THIS DRAWING TO BE READ IN CONJUNCTION WITH DRAWING NOS. 60672559/R23/FIGURE 12.5.1 TO 12.5.4.

LEGEND:

- DEVELOPMENT AREA BOUNDARY
- PROJECT SITE BOUNDARY
- 300m ASSESSMENT AREA
- STUDY AREA
- AUGER HOLE LOCATIONS
- FIELD SCANNING AREA
- TEST PIT LOCATIONS

ARCHAEOLOGICAL INVESTIGATION REPORT ON THE MAIN DRAINAGE CHANNELS FOR NGAU TAM MEI PROJECT, PHASE II:

ENVIRONMENTAL IMPACT ASSESSMENT STUDY FOR NORTHERN LINK - ARCHAEOLOGICAL IMPACT ASSESSMENT REPORT:

AECOM

PROJECT
 項目
LAND USE REVIEW STUDY FOR NGAU TAM MEI AREA - FEASIBILITY STUDY

CLIENT
 業主
CEDD 土木工程拓展署
 Civil Engineering and Development Department

規劃署
 Planning Department

CONSULTANT
 土庫顧問公司
 AECOM Asia Company Ltd.
 www.aecom.com

SUB-CONSULTANTS
 分判土庫顧問公司

ISSUE/REVISION
 修訂

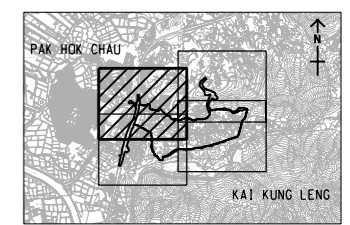
IR	DATE	DESCRIPTION	CHK.

STATUS
 階段

SCALE 比例
 A3 1:5000

DIMENSION UNIT 尺寸單位
 METRES

KEY PLAN 索引圖 A3 1:150000



PROJECT NO. 項目編號
 60672559

AGREEMENT NO. 協議編號
 CE 33/2021

SHEET TITLE 圖紙名稱
 PREVIOUS ARCHAEOLOGICAL WORKS CONDUCTED WITHIN ASSESSMENT AREA

SHEET NUMBER 圖紙編號
 60672559/R23/FIGURE 12.5.1

SHEET 1 OF 4

This drawing has been prepared for the use of AECOM's client. It may not be used, modified, reproduced or relied upon by third parties, except as agreed by AECOM or as required by law. AECOM accepts no responsibility, and disclaims any liability whatsoever, to any party that uses or relies on this drawing without AECOM's express written consent. All measurements must be obtained from the stated dimensions.