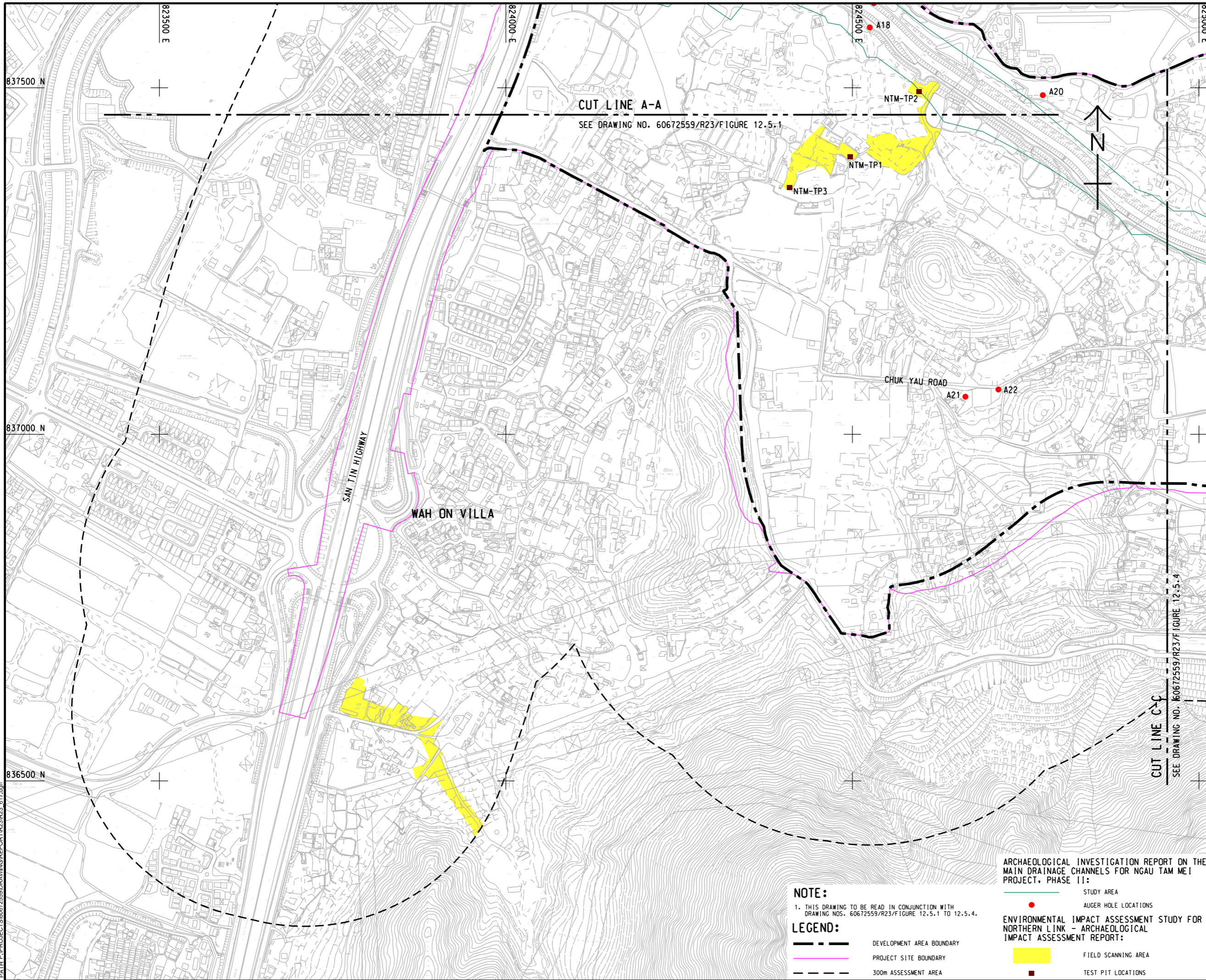


ISO A1 594mm x 841mm  
 Approved:  
 Checked:  
 Designer:  
 Project Management Initials:



CUT LINE A-A  
 SEE DRAWING NO. 60672559/R23/FIGURE 12.5.1

CUT LINE C-C  
 SEE DRAWING NO. 60672559/R23/FIGURE 12.5.4

**NOTE:**  
 1. THIS DRAWING TO BE READ IN CONJUNCTION WITH DRAWING NOS. 60672559/R23/FIGURE 12.5.1 TO 12.5.4.

**LEGEND:**

- DEVELOPMENT AREA BOUNDARY
- PROJECT SITE BOUNDARY
- 300m ASSESSMENT AREA
- AUGER HOLE LOCATIONS
- TEST PIT LOCATIONS
- FIELD SCANNING AREA

ARCHAEOLOGICAL INVESTIGATION REPORT ON THE MAIN DRAINAGE CHANNELS FOR NGAU TAM MEI PROJECT, PHASE II:

ENVIRONMENTAL IMPACT ASSESSMENT STUDY FOR NORTHERN LINK - ARCHAEOLOGICAL IMPACT ASSESSMENT REPORT:



**PROJECT**  
 項目  
 LAND USE REVIEW STUDY FOR NGAU TAM MEI AREA - FEASIBILITY STUDY

**CLIENT**  
 業主  
 土木工程拓展署  
 Civil Engineering and Development Department  
 規劃署  
 Planning Department

**CONSULTANT**  
 土庫顧問公司  
 AECOM Asia Company Ltd.  
 www.aecom.com

**SUB-CONSULTANTS**  
 分判土庫顧問公司

**ISSUE/REVISION**  
 修訂

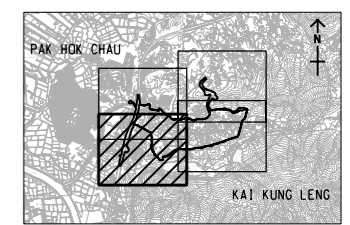
IR	DATE	DESCRIPTION	CHK.

**STATUS**  
 階段

**SCALE**  
 比例  
 A3 1:5000

**DIMENSION UNIT**  
 尺寸單位  
 METRES

**KEY PLAN** A3 1:15000  
 索引圖



**PROJECT NO.**  
 項目編號  
 60672559

**AGREEMENT NO.**  
 協議編號  
 CE 33/2021

**SHEET TITLE**  
 圖紙名稱  
 PREVIOUS ARCHAEOLOGICAL WORKS CONDUCTED WITHIN ASSESSMENT AREA

**SHEET NUMBER**  
 圖紙編號  
 60672559/R23/FIGURE 12.5.2

SHEET 2 OF 4

V:\BAKU\US55-BAK\CSWP\p1\dir\Create Plot File by: iuyang 2025/9/11 20:25:09\11 PATH P:\PROJECTS\60672559\DRAWING\REPORT\R23\R23\_617.dgn

This drawing has been prepared for the use of AECOM's client. It may not be used, modified, reproduced or relied upon by third parties, except as agreed by AECOM or as required by law. AECOM accepts no responsibility, and disclaims all liability, whatsoever, for any loss or damage on this drawing without AECOM's express written consent. All measurements must be obtained from the stated dimensions.