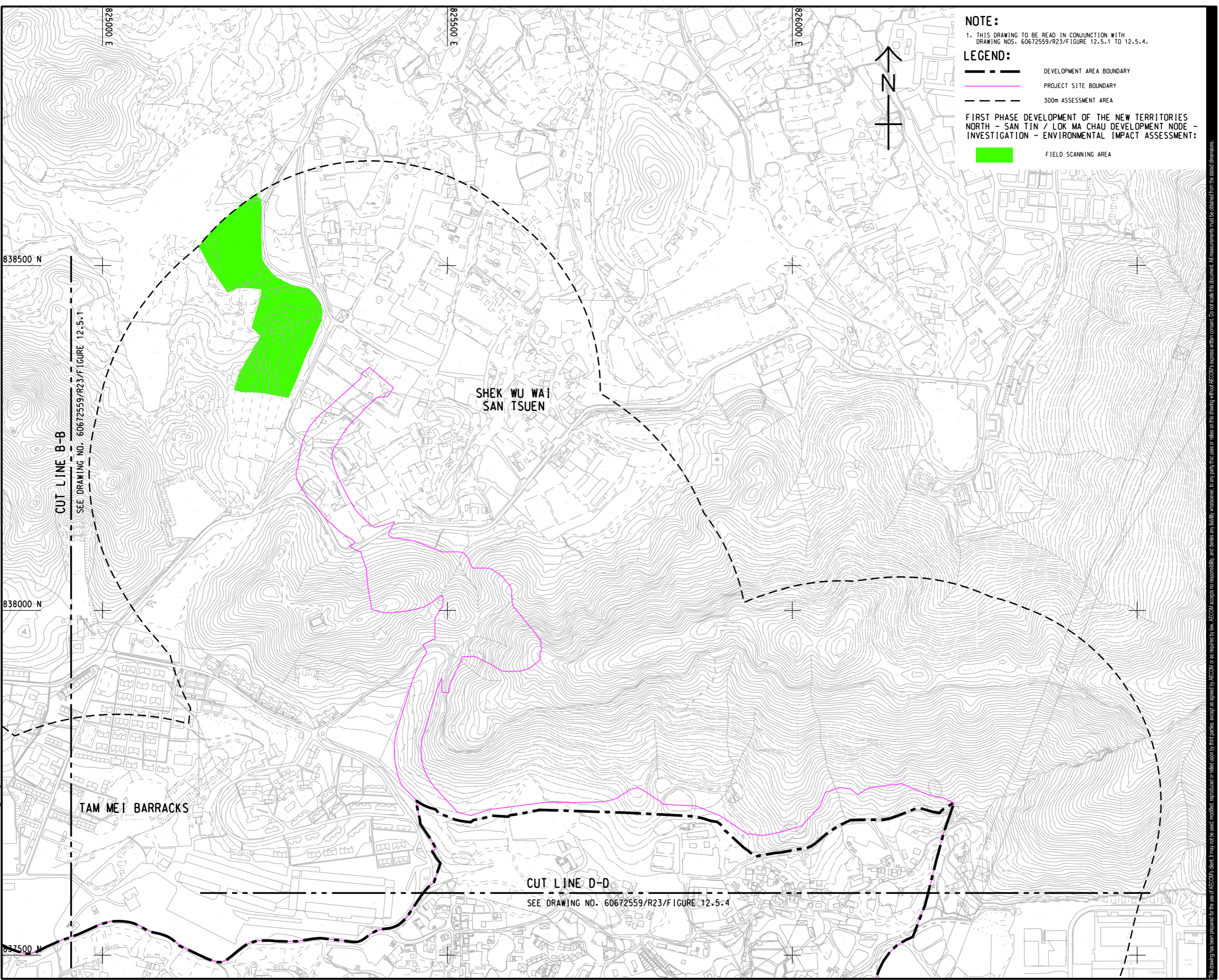


V:\BAKU\US55-BAK\CSWP\p1dtdrv\Create PH file\new\CSWP-75\color\p1d  
 Plot File by: iuying 2025/7/24  
 PATH: P:\PROJECTS\60672559\DRAWING\REPORT\R23\R23\_616.dgn



**NOTE:**  
 1. THIS DRAWING TO BE READ IN CONJUNCTION WITH DRAWING NOS. 60672559/R23/Figure 12.5.1 TO 12.5.4.

**LEGEND:**

- DEVELOPMENT AREA BOUNDARY
- PROJECT SITE BOUNDARY
- 300m ASSESSMENT AREA
- FIELD SCANNING AREA

**FIRST PHASE DEVELOPMENT OF THE NEW TERRITORIES NORTH - SAN TIN / LOK MA CHAU DEVELOPMENT NODE - INVESTIGATION - ENVIRONMENTAL IMPACT ASSESSMENT:**



**AECOM**

**PROJECT**  
 LAND USE REVIEW STUDY FOR NGAU TAM MEI AREA - FEASIBILITY STUDY

**CLIENT**

**CEDD** 土木工程拓展署  
 Civil Engineering and Development Department

**規劃署**  
 Planning Department

**CONSULTANT**

AECOM Asia Company Ltd.  
 www.aecom.com

**SUB-CONSULTANTS**

**ISSUE/REVISION**

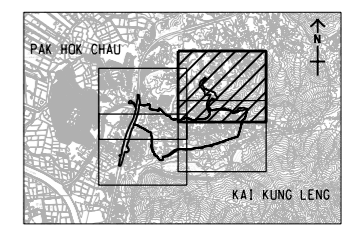
NO.	DATE	DESCRIPTION	CHK.

**STATUS**

**SCALE** 比例: A3 1:5000

**DIMENSION UNIT** 尺寸單位: METRES

**KEY PLAN** 索引圖: A3 1:15000



**PROJECT NO.** 項目編號: 60672559

**AGREEMENT NO.** 協議編號: CE 33/2021

**SHEET TITLE** 圖紙名稱: PREVIOUS ARCHAEOLOGICAL WORKS CONDUCTED WITHIN ASSESSMENT AREA

**SHEET NUMBER** 圖紙編號: 60672559/R23/FIGURE 12.5.3

SHEET 3 OF 4

This drawing has been prepared for the use of AECOM's client. It may not be used, modified, reproduced or relied upon by third parties, except as agreed by AECOM or as required by law. AECOM accepts no responsibility, and disclaims any liability whatsoever, for any gain, loss or damage of any kind, arising from this drawing without AECOM's express written consent. All measurements must be obtained from the stated dimensions.