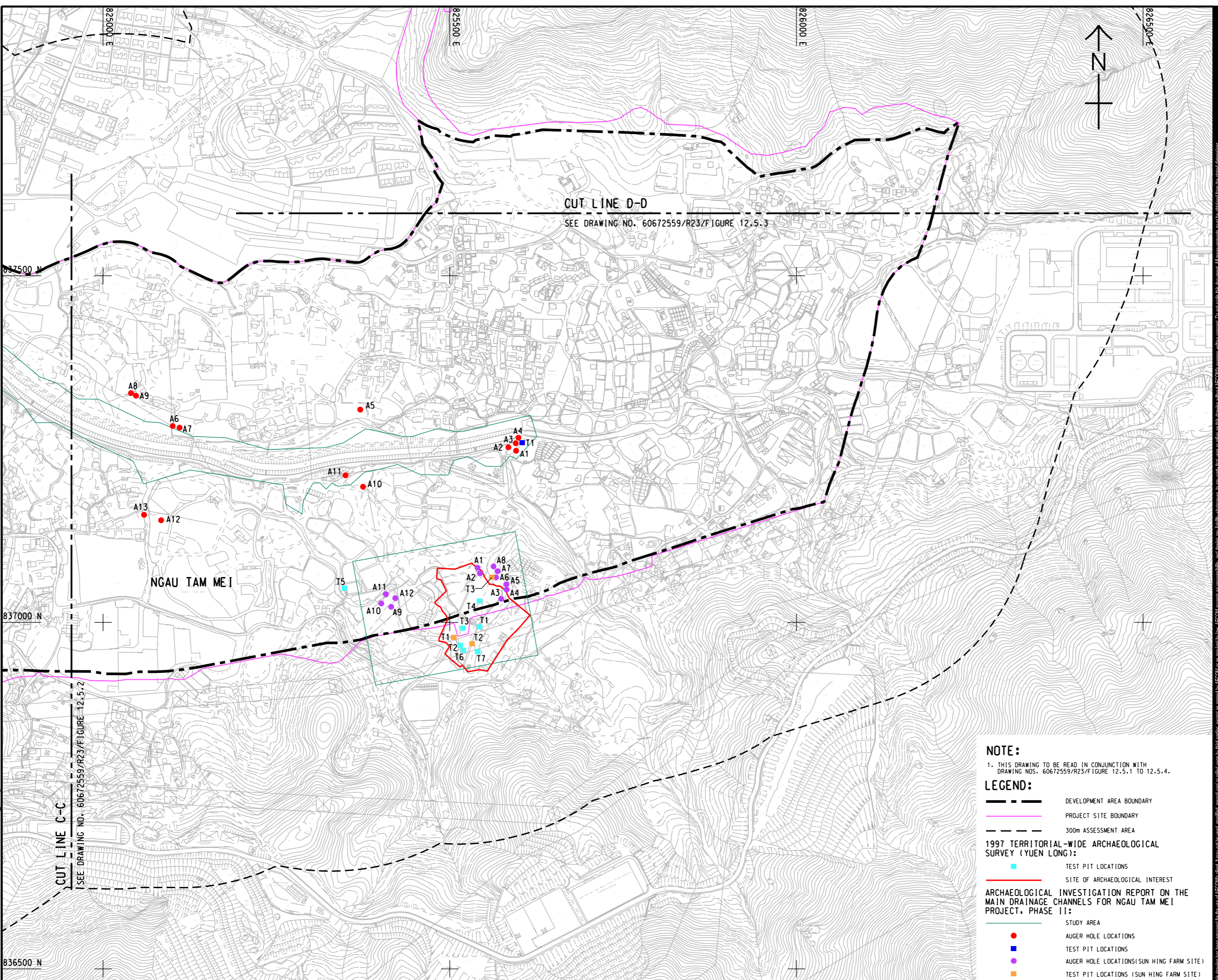


V:\BAKU\US5-BAK\CSWP\p1dtdv\Create PH file\new\CSWP-75\color\p1  
 Plot File by: liuyang 2025/7/24  
 PATH: P:\PROJECTS\60672559\DRAWING\REPORT\R23\R23\_618.dgn  
 ISO A1 594mm x 841mm  
 Approved:  
 Checked:  
 Designer:  
 Project Management Initials:



**AECOM**

PROJECT  
 LAND USE REVIEW STUDY  
 FOR NGAU TAM MEI AREA  
 - FEASIBILITY STUDY

CLIENT  
 土木工程拓展署  
**CEDD** Civil Engineering and  
 Development Department  
 規劃署  
**Planning Department**

CONSULTANT  
 AECOM Asia Company Ltd.  
 www.aecom.com

SUB-CONSULTANTS

**ISSUE/REVISION**

IR	DATE	DESCRIPTION	CHK.

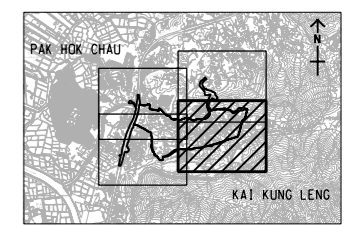
**STATUS**

**SCALE**      **DIMENSION UNIT**

比例      公尺/呎

A3 1:5000      METRES

KEY PLAN      A3 1:150000



- NOTE:**
- THIS DRAWING TO BE READ IN CONJUNCTION WITH DRAWING NOS. 60672559/R23/FIGURE 12.5.1 TO 12.5.4.
- LEGEND:**
- DEVELOPMENT AREA BOUNDARY
  - PROJECT SITE BOUNDARY
  - 300m ASSESSMENT AREA
- 1997 TERRITORIAL WIDE ARCHAEOLOGICAL SURVEY (YUEN LONG):**
- TEST PIT LOCATIONS
  - SITE OF ARCHAEOLOGICAL INTEREST
- ARCHAEOLOGICAL INVESTIGATION REPORT ON THE MAIN DRAINAGE CHANNELS FOR NGAU TAM MEI PROJECT, PHASE II:**
- STUDY AREA
  - AUGER HOLE LOCATIONS
  - TEST PIT LOCATIONS
  - AUGER HOLE LOCATIONS (SUN HING FARM SITE)
  - TEST PIT LOCATIONS (SUN HING FARM SITE)

**PROJECT NO.**      **AGREEMENT NO.**

60672559      CE 33/2021

**SHEET TITLE**

PREVIOUS ARCHAEOLOGICAL WORKS CONDUCTED WITHIN ASSESSMENT AREA

SHEET 4 OF 4

**SHEET NUMBER**

60672559/R23/FIGURE 12.5.4

This drawing has been prepared for the use of AECOM's client. It may not be used, modified, reproduced or relied upon by third parties, except as agreed by AECOM or as required by law. AECOM accepts no responsibility, and disclaims any liability whatsoever, for any part, in whole or in part, that is used or relied on in this drawing without AECOM's express written consent. All measurements must be obtained from the stated dimensions.