

LEGEND:

- DEVELOPMENT AREA BOUNDARY
- PROJECT SITE BOUNDARY
- 300m ASSESSMENT AREA
- WORKS AREA

ARCHAEOLOGICAL POTENTIAL:

NO



PROJECT

LAND USE REVIEW STUDY
FOR NGAU TAM MEI AREA
- FEASIBILITY STUDY

CLIENT



CONSULTANT

AECOM Asia Company Ltd.
www.aecom.com

SUB-CONSULTANTS

ISSUE/REVISION

IR	DATE	DESCRIPTION	CHK.

STATUS

SCALE

A3 1: 12000

DIMENSION UNIT

METRES

KEY PLAN

PROJECT NO.

60672559

AGREEMENT NO.

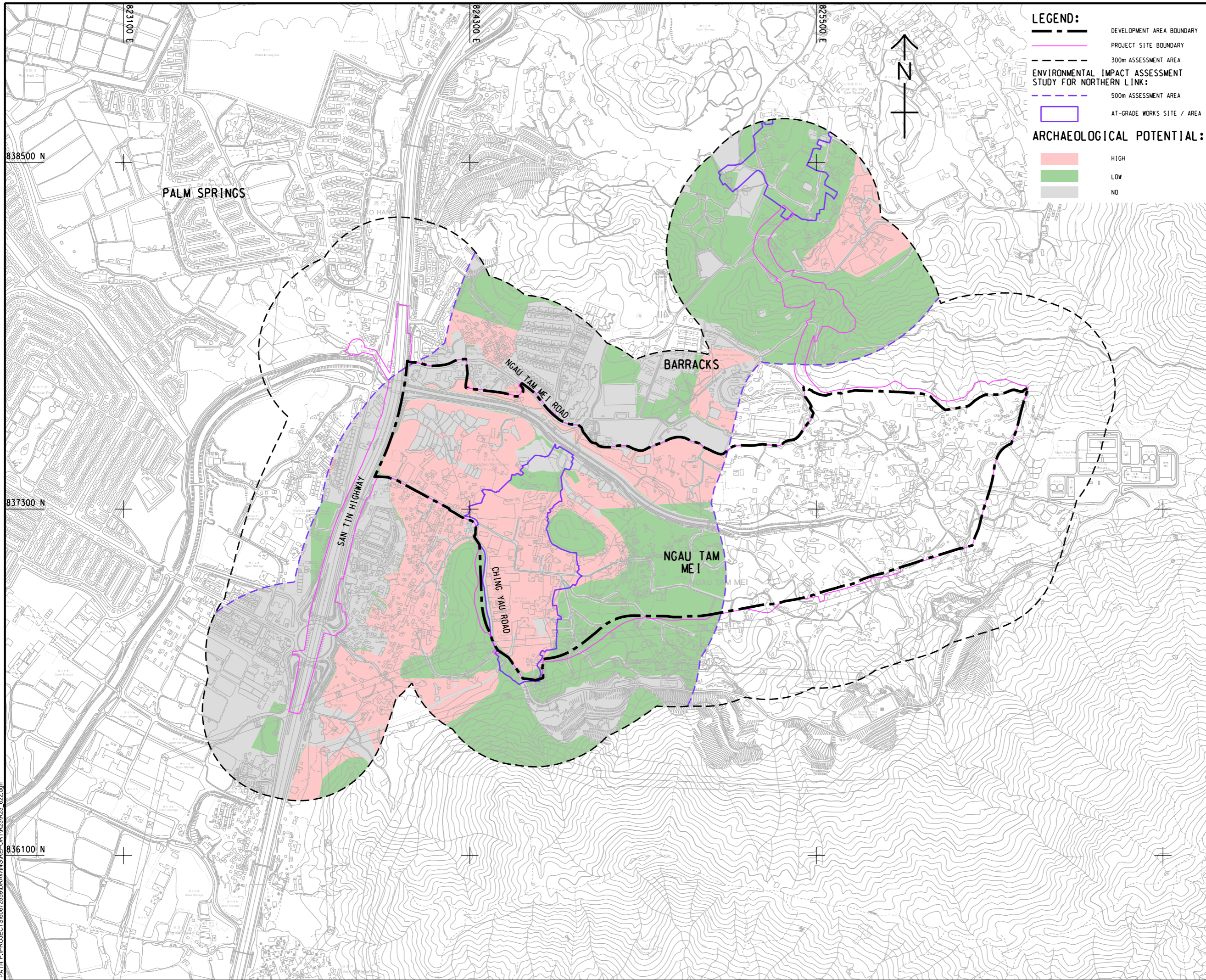
CE 33/2021

SHEET TITLE

ASSESSED ARCHAEOLOGICAL
POTENTIAL AREA PRIOR TO
THIS STUDY (1)

SHEET NUMBER

60672559/R23/FIGURE 12.6.1



LEGEND:

- DEVELOPMENT AREA BOUNDARY
- PROJECT SITE BOUNDARY
- 300m ASSESSMENT AREA
- ENVIRONMENTAL IMPACT ASSESSMENT STUDY FOR NORTHERN LINK:
- 500m ASSESSMENT AREA
- AT-GRADE WORKS SITE / AREA

ARCHAEOLOGICAL POTENTIAL:

- HIGH
- LOW
- NO

ISSUE/REVISION

IR	DATE	DESCRIPTION	CHK.

STATUS

SCALE	DIMENSION UNIT
A3 1: 12000	METRES

KEY PLAN

PROJECT NO.	AGREEMENT NO.
60672559	CE 33/2021

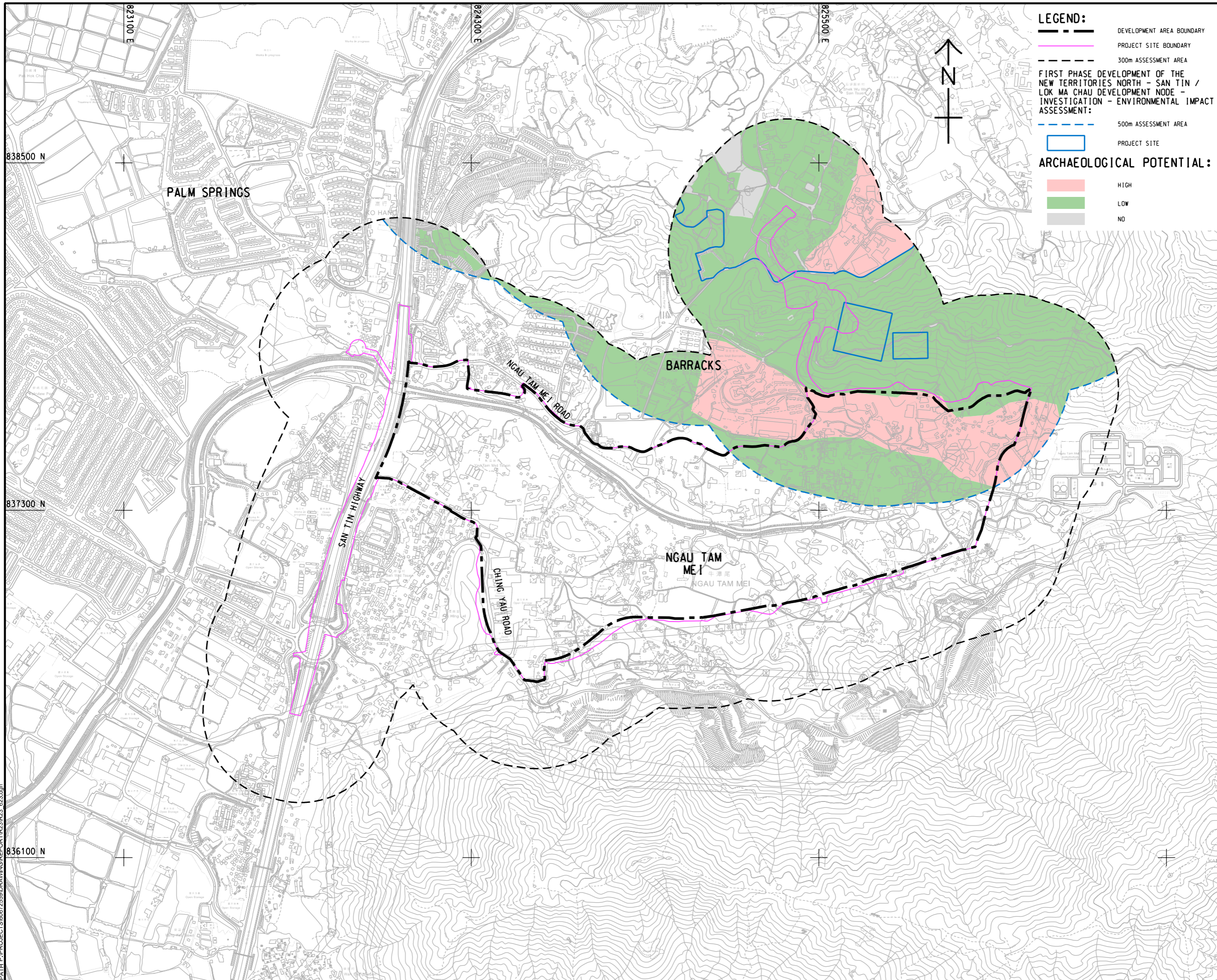
SHEET TITLE
 圖則名稱
**ASSESSED ARCHAEOLOGICAL
 POTENTIAL AREA PRIOR TO
 THIS STUDY (2)**

SHEET NUMBER

60672559/R23/FIGURE 12.6.2

This drawing has been prepared for the use of AECOM's client. It may not be used, modified, reproduced or relied upon by third parties, except as agreed by AECOM or as required by law. AECOM accepts no responsibility, and disclaims any liability whatsoever, for any part, that is used or relied on in this drawing without AECOM's express written consent. All measurements must be obtained from the stated dimensions.

V:\BAKU\US95-BAK\CSWP\p1dtriv\Create PH file\new\CSWP-75\color\p1
 Plot File by: iu.yang 2025/7/29
 PATH P:\PROJECTS\60672559\DRAWING\REPORT\R23\R23_623.dgn



LEGEND:

- DEVELOPMENT AREA BOUNDARY
- PROJECT SITE BOUNDARY
- 300m ASSESSMENT AREA
- 500m ASSESSMENT AREA
- PROJECT SITE

FIRST PHASE DEVELOPMENT OF THE NEW TERRITORIES NORTH - SAN TIN / LOK MA CHAU DEVELOPMENT NODE - INVESTIGATION - ENVIRONMENTAL IMPACT ASSESSMENT:

ARCHAEOLOGICAL POTENTIAL:

- HIGH
- LOW
- NO

AECOM

PROJECT
 LAND USE REVIEW STUDY FOR NGAU TAM MEI AREA - FEASIBILITY STUDY

CLIENT
 土木工程拓展署
 Civil Engineering and Development Department
 規劃署
 Planning Department

CONSULTANT
 AECOM Asia Company Ltd.
 www.aecom.com

SUB-CONSULTANTS

ISSUE/REVISION

NO.	DATE	DESCRIPTION	CHK.

STATUS
 備案

SCALE
 比例 1:12000

DIMENSION UNIT
 尺寸單位 METRES

KEY PLAN
 索引圖

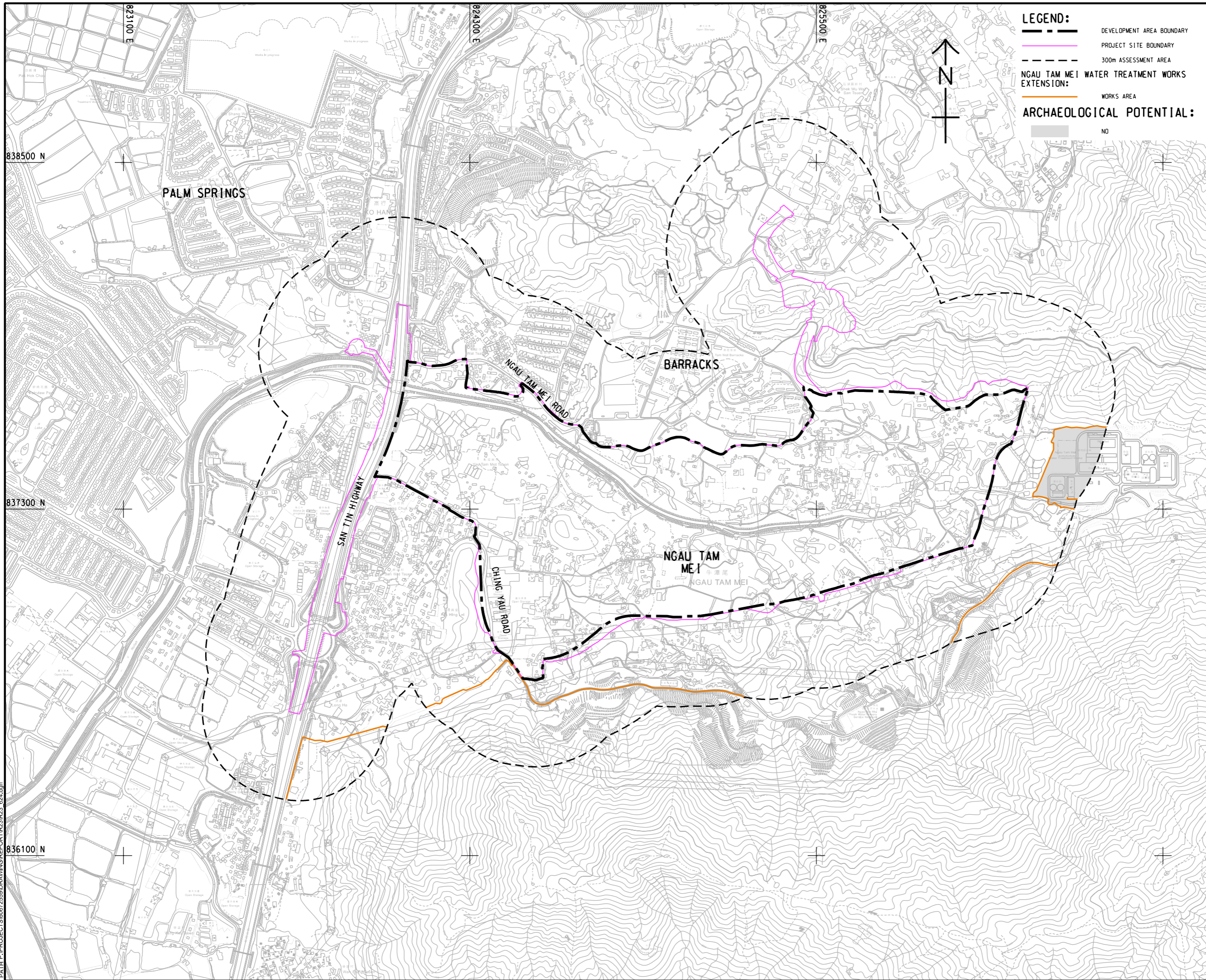
PROJECT NO.
 項目編號 60672559

AGREEMENT NO.
 協議編號 CE 33/2021

SHEET TITLE
 圖紙名稱 ASSESSED ARCHAEOLOGICAL POTENTIAL AREA PRIOR TO THIS STUDY (3)

SHEET NUMBER
 圖紙編號 60672559/R23/FIGURE 12.6.3

This drawing has been prepared for the use of AECOM's client. It may not be used, modified, reproduced or relied upon by third parties, except as agreed by AECOM or as required by law. AECOM accepts no responsibility, and disclaims any liability whatsoever, for any part, that is used or relied on in this drawing without AECOM's express written consent. All measurements must be obtained from the stated dimensions.



LEGEND:

- DEVELOPMENT AREA BOUNDARY
- PROJECT SITE BOUNDARY
- 300m ASSESSMENT AREA
- NGAU TAM MEI WATER TREATMENT WORKS EXTENSION:
- WORKS AREA

ARCHAEOLOGICAL POTENTIAL:

- NO



ISSUE/REVISION

IR	DATE	DESCRIPTION	CHK.

STATUS

SCALE DIMENSION UNIT

A3 1: 12000 METRES

KEY PLAN

PROJECT NO. AGREEMENT NO.

60672559 CE 33/2021

SHEET TITLE

ASSESSED ARCHAEOLOGICAL
POTENTIAL AREA PRIOR TO
THIS STUDY (4)

SHEET NUMBER

60672559/R23/FIGURE 12.6.4