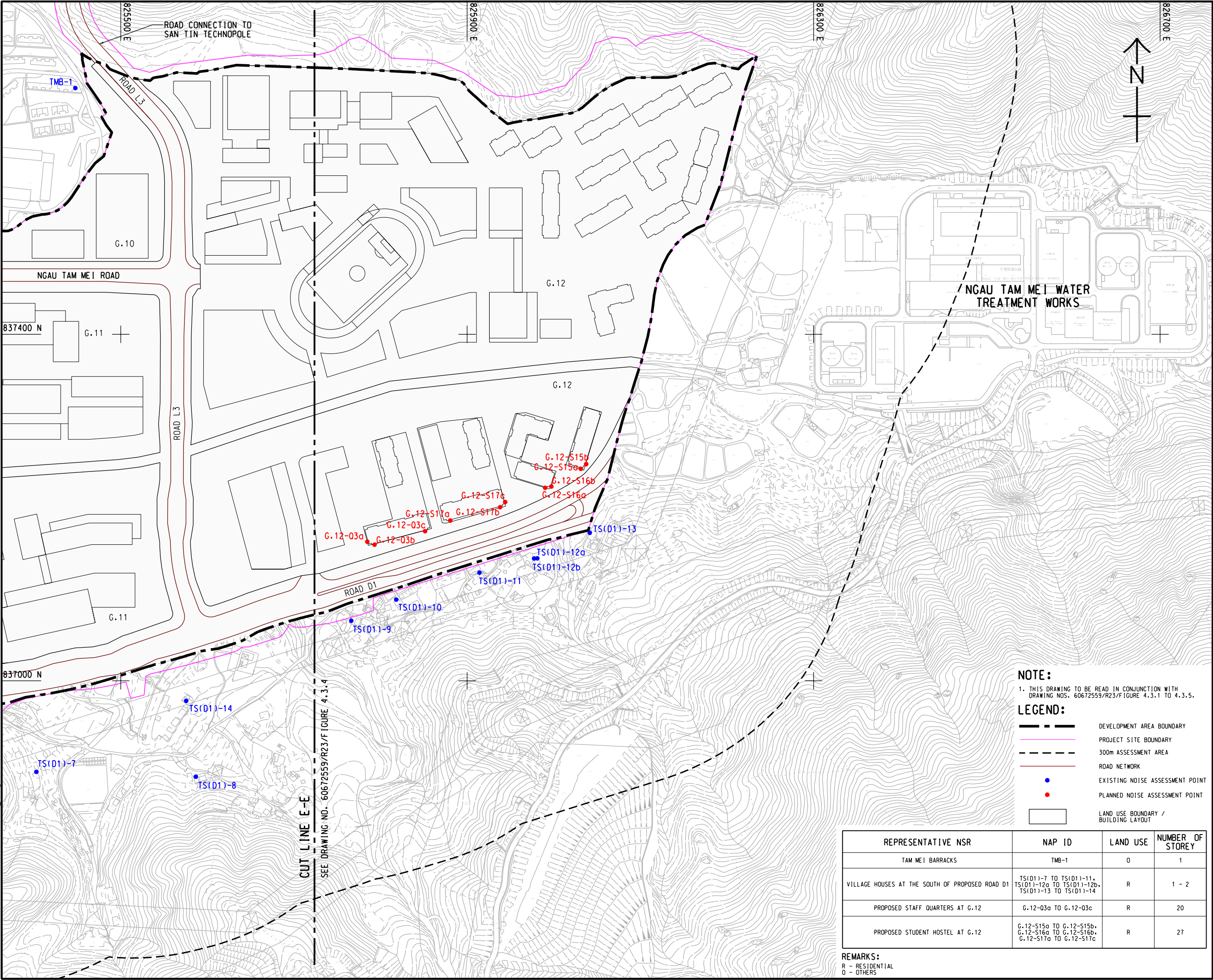


ISO A1 594mm x 841mm  
Approved:  
Checked:  
Designer:  
Project Management Initials:

V:\BAKU\US5-BAKO\SWP\p1dtdr\Create PH file\new\CSWP-75\color\p1dtdr\p1dtdr.dgn  
Plot File by: llyyang 2025/8/25  
PATH P:\PROJECTS\60672559\DRAWING\REPORT\R23\_225.dgn



**NOTE:**  
1. THIS DRAWING TO BE READ IN CONJUNCTION WITH DRAWING NOS. 60672559/R23/FIGURE 4.3.1 TO 4.3.5.

**LEGEND:**

- DEVELOPMENT AREA BOUNDARY
- PROJECT SITE BOUNDARY
- 300m ASSESSMENT AREA
- ROAD NETWORK
- EXISTING NOISE ASSESSMENT POINT
- PLANNED NOISE ASSESSMENT POINT
- LAND USE BOUNDARY / BUILDING LAYOUT

REPRESENTATIVE NSR	NAP ID	LAND USE	NUMBER OF STOREY
TAM MEI BARRACKS	TMB-1	O	1
VILLAGE HOUSES AT THE SOUTH OF PROPOSED ROAD D1	TS(D1)-7 TO TS(D1)-11, TS(D1)-12a TO TS(D1)-12b, TS(D1)-13 TO TS(D1)-14	R	1 - 2
PROPOSED STAFF QUARTERS AT G.12	G.12-03a TO G.12-03c	R	20
PROPOSED STUDENT HOSTEL AT G.12	G.12-S15a TO G.12-S15b, G.12-S16a TO G.12-S16b, G.12-S17a TO G.12-S17c	R	27

**REMARKS:**  
R - RESIDENTIAL  
O - OTHERS



**PROJECT**  
項目  
LAND USE REVIEW STUDY  
FOR NGAU TAM MEI AREA  
- FEASIBILITY STUDY

**CLIENT**  
業主  
 土木工程拓展署  
Civil Engineering and  
Development Department  
 規劃署  
Planning Department

**CONSULTANT**  
工程顧問公司  
AECOM Asia Company Ltd.  
www.aecom.com

**SUB-CONSULTANTS**  
分判工程顧問公司

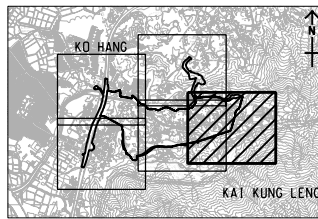
ISSUE/REVISION			
修訂			
I/R	DATE	DESCRIPTION	CHK.
修訂	日期	內容摘要	校核

**STATUS**  
階段

**SCALE**  
比例  
A3 1:4000

**DIMENSION UNIT**  
尺寸單位  
METRES

**KEY PLAN**  
索引圖  
A3 1:120000



**PROJECT NO.**  
項目編號  
60672559

**AGREEMENT NO.**  
協議編號  
CE 33/2021

**SHEET TITLE**  
圖紙名稱  
LOCATIONS OF NOISE ASSESSMENT POINTS  
FOR ROAD TRAFFIC NOISE IMPACT  
ASSESSMENT (RESIDENTIAL PREMISES AND  
EDUCATIONAL INSTITUTIONS)  
SHEET 5 OF 5

**SHEET NUMBER**  
圖紙編號  
60672559/R23/FIGURE 4.3.5

This drawing has been prepared for the use of AECOM's client. It may not be used, modified, reproduced or relied upon by third parties, except as agreed by AECOM or as required by law. AECOM accepts no responsibility, and denies any liability whatsoever, to any party that uses or relies on this drawing without AECOM's express written consent. Do not scale this document. All measurements must be obtained from the stated dimensions.