

V:\BAKU\US5-BAK\CSWP\p\ldtr\Create PH file\new\CSWP-75\color\pjt  
Plot File by: luyang  
2025/8/21  
PATH P:\PROJECTS\60872559\DRAWING\REPORT\R23\R23\_230.dgn

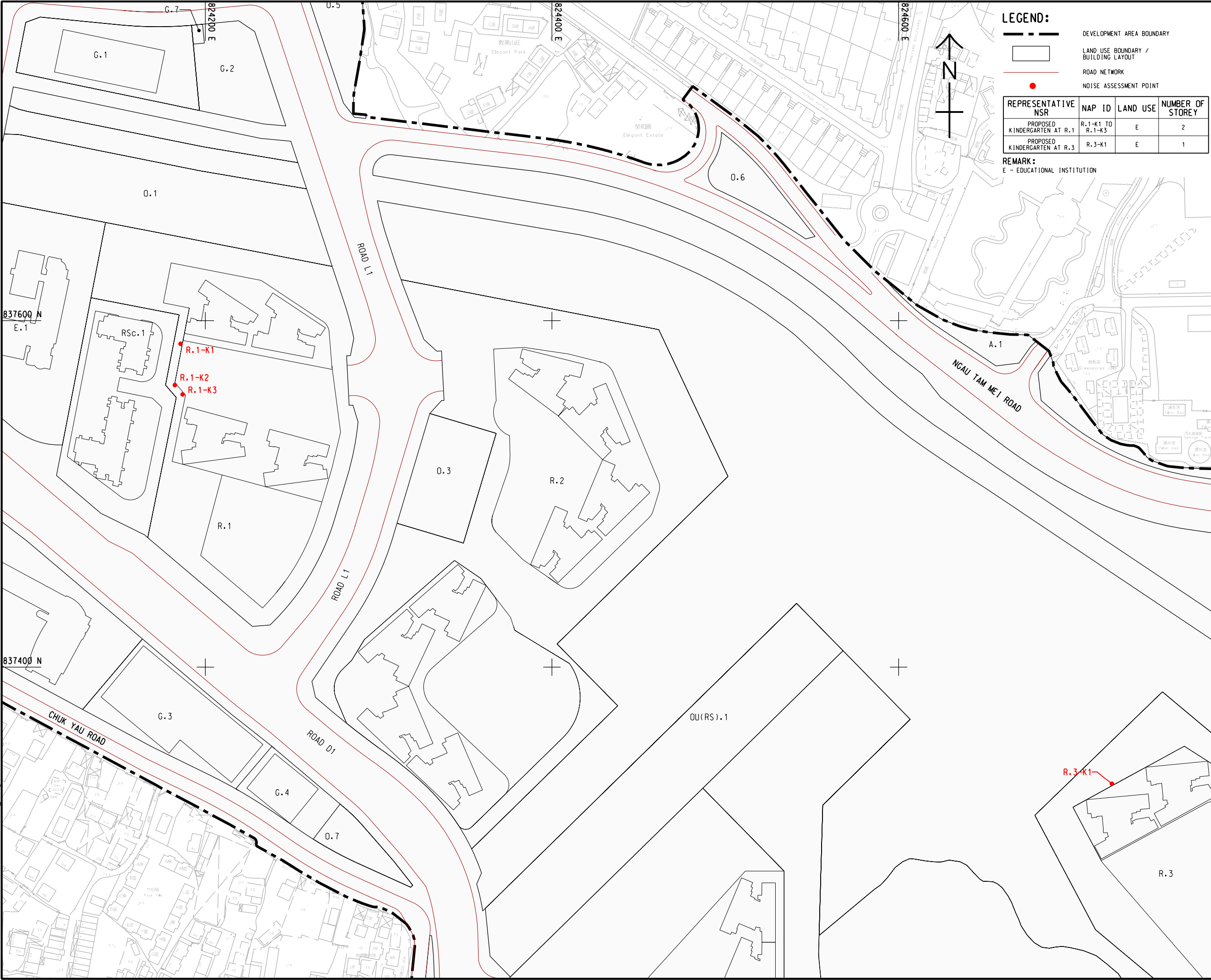
ISO A1 594mm x 841mm

Approved:

Checked:

Designer:

Project Management Initials:



LEGEND:

- DEVELOPMENT AREA BOUNDARY
- LAND USE BOUNDARY / BUILDING LAYOUT
- ROAD NETWORK
- NOISE ASSESSMENT POINT

REPRESENTATIVE NSR	NAP ID	LAND USE	NUMBER OF STOREY
PROPOSED KINDERGARTEN AT R.1	R.1-K1 TO R.1-K3	E	2
PROPOSED KINDERGARTEN AT R.3	R.3-K1	E	1

REMARK:  
E - EDUCATIONAL INSTITUTION



PROJECT  
項目  
LAND USE REVIEW STUDY  
FOR NGAU TAM MEI AREA  
- FEASIBILITY STUDY

CLIENT  
業主  
 土木工程拓展署  
Civil Engineering and Development Department  
 規劃署  
Planning Department

CONSULTANT  
工程顧問公司  
AECOM Asia Company Ltd.  
www.aecom.com

SUB-CONSULTANTS  
分判工程顧問公司

ISSUE/REVISION

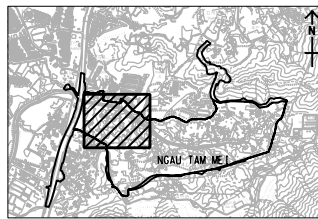
I/R	DATE	DESCRIPTION	CHK.
修改	日期	內容摘要	校核

STATUS

階段

SCALE  
比例  
A3 1 : 2000  
DIMENSION UNIT  
尺寸單位  
METRES

KEY PLAN  
索引圖  
A3 1 : 80000



PROJECT NO.  
項目編號  
60672559  
AGREEMENT NO.  
協議編號  
CE 33/2021

SHEET TITLE  
圖紙名稱  
LOCATIONS OF NOISE ASSESSMENT  
POINTS FOR ROAD TRAFFIC NOISE  
IMPACT ASSESSMENT  
(PROPOSED KINDERGARTENS)

SHEET NUMBER  
圖紙編號  
60672559/R23/FIGURE 4.4

This drawing has been prepared for the use of AECOM's client. It may not be used, modified, reproduced or relied upon by third parties, except as agreed by AECOM or as required by law. AECOM accepts no responsibility, and denies any liability whatsoever, to any party that uses or relies on this drawing without AECOM's express written consent. Do not scale this document. All measurements must be obtained from the stated dimensions.