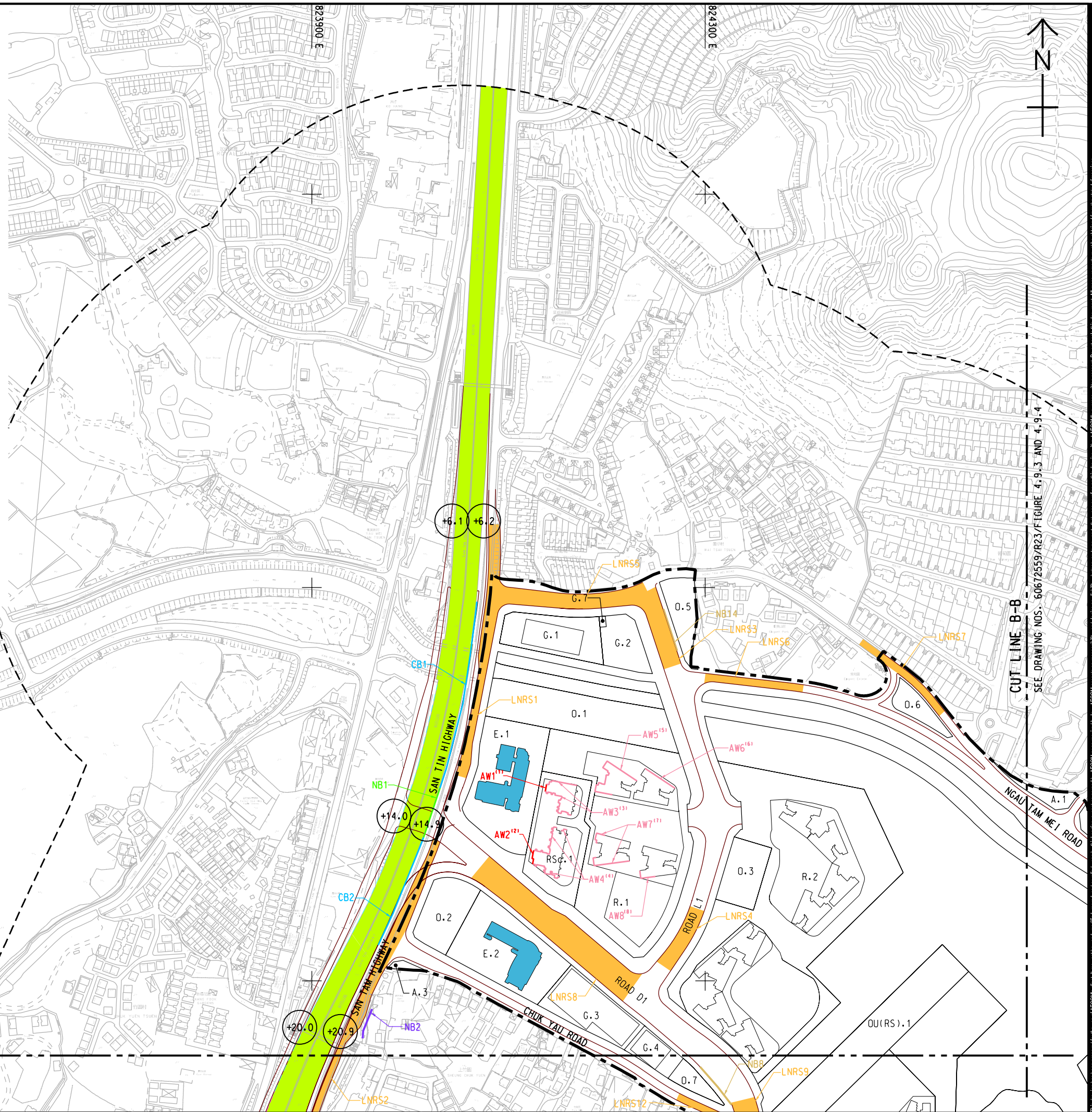


1. ACUSTIC WINDOWS / BALCONIES LINED WITH SOUND ABSORPTIVE MATERIAL WILL BE REQUIRED ON 17th TO 25th FLOOR OF NAP RSC.1-2e.
2. ACUSTIC WINDOWS / BALCONIES LINED WITH SOUND ABSORPTIVE MATERIAL WILL BE REQUIRED ON 13th TO 33rd FLOOR OF NAP RSC.1-1f.
3. ACUSTIC WINDOWS / BALCONIES WILL BE REQUIRED ON 8th TO 25th FLOOR OF NAP RSC.1-2a; 5th TO 25th FLOOR OF NAP RSC.1-2b; 4th TO 25th FLOOR OF NAP RSC.1-2c; 3rd TO 25th FLOOR OF NAP RSC.1-2d; 1st TO 16th FLOOR OF NAP RSC.1-2e.
4. ACUSTIC WINDOWS / BALCONIES WILL BE REQUIRED ON 1st TO 42nd FLOOR OF NAPS RSC.1-1a TO RSC.1-1b; 12th TO 42nd FLOOR OF NAP RSC.1-1c; 1st TO 42nd FLOOR OF RSC.1-1d; 9th TO 42nd FLOOR OF RSC.1-1e; 1st TO 12th AND 34th TO 42nd FLOOR OF RSC.1-1f.
5. ACUSTIC WINDOWS / BALCONIES WILL BE REQUIRED ON 8th TO 37th FLOOR OF NAP R.1-1a; 2nd TO 37th FLOOR OF NAP R.1-1b; 5th TO 37th FLOOR OF NAP R.1-1c; 24th TO 37th FLOOR OF NAP R.1-1d.
6. ACUSTIC WINDOWS / BALCONIES WILL BE REQUIRED ON 1st TO 37th FLOOR OF NAP R.1-2d.
7. ACUSTIC WINDOWS / BALCONIES WILL BE REQUIRED ON 26th TO 37th FLOOR OF NAP R.1-2a; 23rd TO 37th FLOOR OF NAP R.1-3b; 6th TO 37th FLOOR OF NAPS R.1-3c TO R.1-3d.
8. ACUSTIC WINDOWS / BALCONIES WILL BE REQUIRED ON 11th TO 37th FLOOR OF NAP R.1-4a; 10th TO 37th FLOOR OF NAP R.1-4b.
9. THIS DRAWING TO BE READ IN CONJUNCTION WITH DRAWING NOS. 60672559/R23/Figure 4.9.1 TO 4.9.5.

———— 300m ASSESSMENT AREA
 ———— ROAD NETWORK
 ———— FACADE WITH PROVISION OF ACOUSTIC WINDOWS / ACOUSTIC BALCONIES LINED WITH SOUND ABSORPTIVE MATERIAL
 ———— FACADE WITH PROVISION OF ACOUSTIC WINDOWS / ACOUSTIC BALCONIES
 - - - - - EXISTING 2.5m VERTICAL NOISE BARRIER
 - - - - - EXISTING 3m VERTICAL NOISE BARRIER
 ———— PROPOSED 2m VERTICAL NOISE BARRIER
 ———— PROPOSED 4.5m VERTICAL NOISE BARRIER
 ———— PROPOSED 7m VERTICAL NOISE BARRIER
 ———— PROPOSED (7+3)m CANTILEVERED NOISE BARRIER
 ———— EXISTING LOW NOISE ROAD SURFACING
 ———— PROPOSED LOW NOISE ROAD SURFACING
 [] LAND USE BOUNDARY / BUILDING FOOTPRINT
 [] PLANNED BUILDINGS WITH CENTRAL AIR-CONDITIONING
 (+20.0) PROPOSED ROAD LEVEL (mPD)



This drawing has been prepared for the use of AECOM's client. It may not be used, modified, reproduced or relied upon by third parties, except as agreed by law. AECOM accepts no responsibility, and denies any liability, whatsoever, to any party that uses or relies on this drawing without AECOM's express written consent. Do not scale this document. All measurements must be obtained from the stated dimensions.