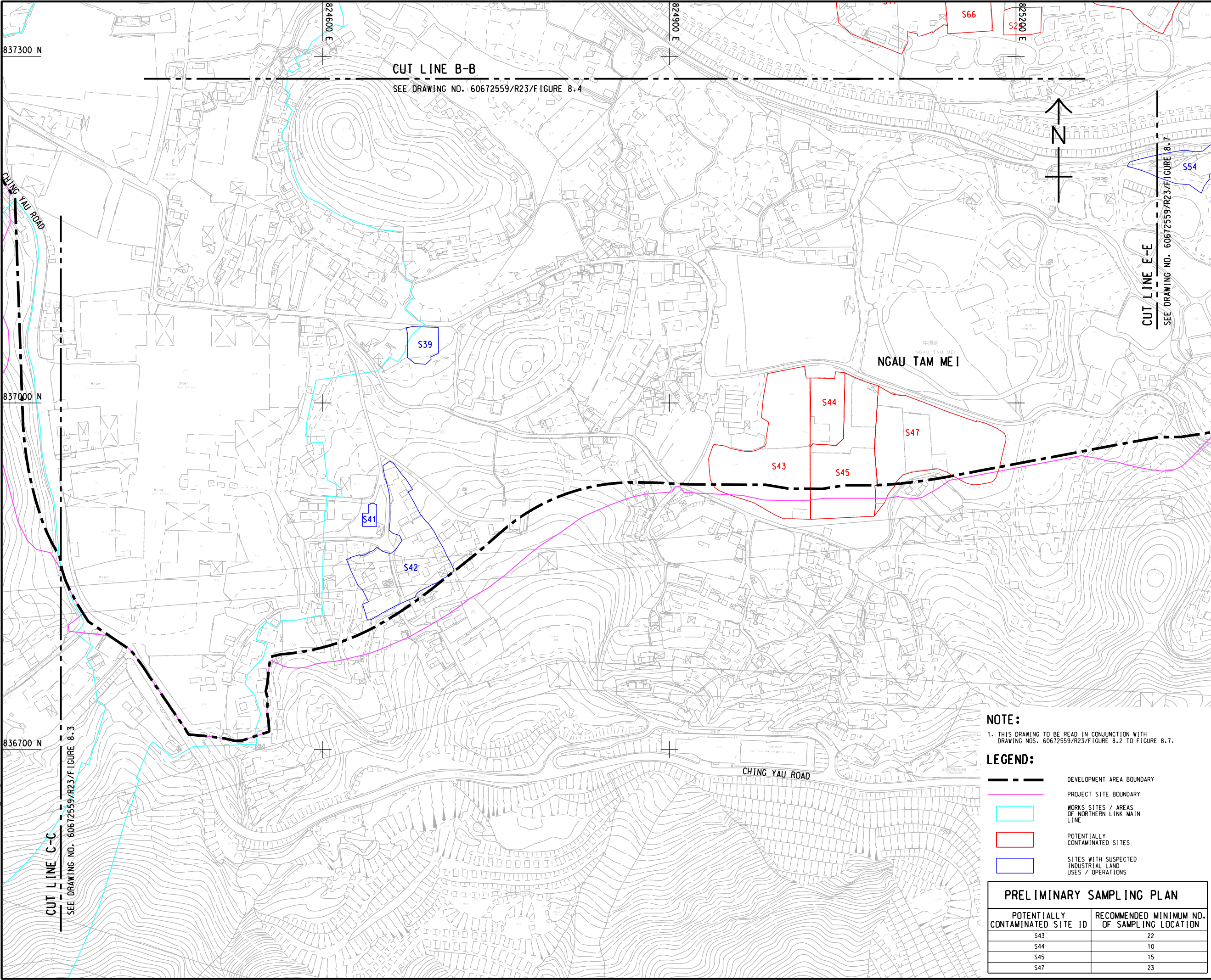


V:\BAKU\US5-BAKO\SWP\p1dtr\Create PH file\new CSWP-75\color1.plt
Plot File by: lilyyang
2025/7/24
PATH P:\PROJECTS\60672559\DRAWING\REPORT\R23_086.dgn

ISO A1 594mm x 841mm
Approved:
Checked:
Designer:
Project Management Initials:



CUT LINE B-B

SEE DRAWING NO. 60672559/R23/FIGURE 8.4

CUT LINE E-E

SEE DRAWING NO. 60672559/R23/FIGURE 8.7

NGAU TAM MEI

CHING YAU ROAD

NOTE:

1. THIS DRAWING TO BE READ IN CONJUNCTION WITH
DRAWING NOS. 60672559/R23/FIGURE 8.2 TO FIGURE 8.7.

LEGEND:

- DEVELOPMENT AREA BOUNDARY
- PROJECT SITE BOUNDARY
- WORKS SITES / AREAS OF NORTHERN LINK MAIN LINE
- POTENTIALLY CONTAMINATED SITES
- SITES WITH SUSPECTED INDUSTRIAL LAND USES / OPERATIONS

PRELIMINARY SAMPLING PLAN

POTENTIALLY CONTAMINATED SITE ID	RECOMMENDED MINIMUM NO. OF SAMPLING LOCATION
S43	22
S44	10
S45	15
S47	23

AECOM

PROJECT

LAND USE REVIEW STUDY
FOR NGAU TAM MEI AREA
- FEASIBILITY STUDY

CLIENT



CONSULTANT

AECOM Asia Company Ltd.
www.aecom.com

SUB-CONSULTANTS

ISSUE/REVISION

I/R	DATE	DESCRIPTION	CHK.

STATUS

SCALE

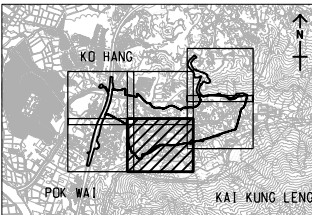
A3 1:3000

DIMENSION UNIT

METRES

KEY PLAN

A3 1:120000



PROJECT NO.

60672559

AGREEMENT NO.

CE 33/2021

SHEET TITLE

LOCATIONS OF POTENTIALLY
CONTAMINATED SITES AND SITES
WITH SUSPECTED INDUSTRIAL LAND
USES / OPERATIONS

SHEET 4 OF 6

SHEET NUMBER

60672559/R23/FIGURE 8.5