



TEST REPORT



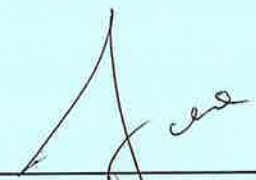
China Harbour Engineering Co Ltd

**Contract No.: CV/2023/10
Handling of Surplus Public Fill
(2024-2027)**


**TUEN MUN AREA 38 FILL BANK
QUARTERLY EM&A SUMMARY REPORT
NO.04**

(FROM APRIL 2025 TO JUNE 2025)

Prepared by:


LAU, Wing Sum
Environmental Officer

Checked by:


LAU, Chi Leung
Environmental Team Leader

Issue Date: 09 July 2025

Report No.: ENA52793

By Post

Our Ref : P231104-EMA-TMFB-202506Q-V
Date : 14th July 2025

ETS-Testconsult Limited
8/F, Block B, Veristrong Industrial Centre,
34-36 Au Pui Wan Street,
Fo Tan, NT

Attn: Mr. LAU Chi Leung

Environmental Permit (EP) No. EP-210/2005/F
Expansion and Extension of Fill Bank at Tuen Mun Area 38
Quarterly EM&A Report for April to June 2025

Dear Sir,

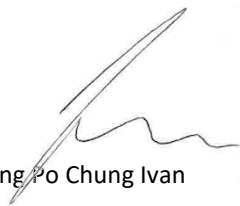
Pursuant to Condition 4.6 of Environmental Permit (EP) No. EP-210/2005/F, please note the report "*Tuen Mun Area 38 Fill Bank Quarterly EM&A Summary Report No. 04 (From April 2025 to June 2025)*" dated 9 July 2025 submitted under the EP, certified by the Environmental Team Leader on 9 July 2025, had been reviewed and is hereby verified.

Should you have any query, please feel free to contact the undersigned at 3756 9590 or ivanting@umwelt.consulting.

Your faithfully,

For and on behalf of:

Umwelt Consulting Limited



Ting Po Chung Ivan

Independent Environmental Checker

TABLE OF CONTENTS		Page
EXECUTIVE SUMMARY		
1.0	INTRODUCTION	1
2.0	PROJECT INFORMATION	
	2.1 Project Activities in this Reporting Quarter	1
	2.2 Project Organization and Management Structure	1
	2.3 Contact Details of Key Personnel	1
3.0	SUMMARY OF EM&A REQUIREMENTS	
	3.1 EM&A Programme	1 – 2
	3.2 Monitoring Stations and Parameters	2
	3.3 Monitoring Methodology and Calibration Details	2
	3.4 Environmental Quality Performance Limits (Action/Limit Levels)	2
	3.5 Environmental Mitigation Measures	2
4.0	MONITORING RESULTS	
	4.1 Air Quality	2
	4.2 Noise	2
	4.3 Marine Water Quality	3
5.0	INSPECTION RESULTS	
	5.1 Inspection Results	3 – 4
	5.2 Status of Environmental Licensing and Permitting	4
	5.3 Advice on Solids and Liquid Waste Management Status	4
6.0	<u>NON-COMPLIANCE OF THE ENVIRONMENTAL QUALITY PERFORMANCE LIMITS</u>	
	6.1 Summary of Non-compliance	4
	6.2 Review of the Reasons for and the implication of non-compliance	5
	6.3 Summary of Action Taken	5
	6.4 Summary of Environmental Complaint, Notification of Summons and Successful	5
7.0	<u>COMMENTS, CONCLUSIONS AND RECOMMENDATION</u>	5 – 6
APPENDIX		
A	Organization Chart	
B	Graphical Plots of Impact Air Quality Monitoring Data	
C	Graphical Plots of Impact Noise Monitoring Data	
D	Graphical Plots of Impact Marine Water Quality Monitoring Data	
E	Environmental Quality Performance (Action / Limit Levels)	
F	Event-Action Plans	
G	Work Programme	
H	Implementation Schedule of Environmental Mitigation Measures (EMIS)	
I	Statistical Analysis of the Trend of Suspended Solids in the Quarter	
J	Site General Layout Plan	
K	Weather Condition	
L	Complaint Log	
Figures		
Figure 1	Locations of Air Quality Monitoring Stations – Tuen Mun Area 38 Fill Bank	
Figure 2	Locations of Water Quality Monitoring Stations – Tuen Mun Area 38 Fill Bank	
Figure 3	Locations of Noise Quality Monitoring Stations – Tuen Mun Area 38 Fill Bank	
Tables		
2.1	Contact Details of Key Personnel	
4.1	Summary of Number of Exceedances for 1-hr and 24-hr TSP Monitoring	
4.2	Total Number of Marine Water Quality Exceedances in this quarter	
4.3	Summary of Statistically Significant Results of SS	
5.1	Summary of Environmental Licensing and Permit Status	
5.2	Estimated Offsite Waste Disposal in the Reporting Quarter	
6.1	Summary of Environmental Complaints and Prosecutions	

EXECUTIVE SUMMARY

This is Quarterly Environmental Monitoring and Audit (EM&A) Summary Report No.04 prepared by ETS-Testconsult Ltd (ET) for the “Contract No: CV/2023/10 – Handling of Surplus Public Fill (2024-2027) – Tseung Kwan O (TKO) Area 137 Fill Bank” (The Project).

This report documents the findings of EM&A Works conducted during the operation phase of Fill Bank at Tuen Mun Area 38 from 01 April 2025 to 30 June 2025.

Site Activities

As informed by the Contractor, the site activities in this reporting quarter were as below:

- April 2025*
1. Operation of the Public Fill Reception Facilities at Tuen Mun Fill Bank (TMFB);
 2. Operation of the Integrated Public Fill Reception Platform (Fixed Rigid Platform) at TMFB;
 3. Operation and Maintenance of Wheel Washing Bays and Facilities at TMFB;
 4. Operation and Maintenance of Wash House at TMFB;
 5. Personnel Position Tracking and Proximity Detection System of Moving Plant at TMFB;
 6. Operation and Maintenance a Digital Works Supervision System (DWSS) for TMFB;
 7. Operation and Maintenance of Crushing plant at TMFB;
 8. Delivery of public fill to Taishan at TMFB;
 9. Operation of AI System for Crushing Plant at TMFB
 10. Operation of berthing facilities and filling works at Tsang Tsui
 11. Implementation of C Easy system at TMFB
 12. Carry out GCO Probe test and SRT
 13. Operation of recycling public fill as blanket layer material of reclamation projects
 14. Delivery of DSD Material at TMFB
 15. Improvement works along seashore at TMFB
 16. Refurbishment work of Tipping Hall no.2 at TMFB
- May 2025*
1. Operation of the Public Fill Reception Facilities at Tuen Mun Fill Bank (TMFB);
 2. Operation of the Integrated Public Fill Reception Platform (Fixed Rigid Platform) at TMFB;
 3. Operation and Maintenance of Wheel Washing Bays and Facilities at TMFB;
 4. Operation and Maintenance of Wash House at TMFB;
 5. Personnel Position Tracking and Proximity Detection System of Moving Plant at TMFB;
 6. Operation and Maintenance a Digital Works Supervision System (DWSS) for TMFB;
 7. Operation and Maintenance of Crushing plant at TMFB;
 8. Delivery of public fill to Taishan at TMFB;
 9. Operation of AI System for Crushing Plant at TMFB
 10. Operation of berthing facilities and filling works at Tsang Tsui
 11. Implementation of C Easy system at TMFB
 12. Carry out GCO Probe test and SRT
 13. Operation of recycling public fill as blanket layer material of reclamation projects
 14. Delivery of DSD Material at TMFB
 15. Improvement works along seashore at TMFB
- June 2025*
1. Operation of the Public Fill Reception Facilities at Tuen Mun Fill Bank (TMFB);
 2. Operation of the Integrated Public Fill Reception Platform (Fixed Rigid Platform) at TMFB;
 3. Operation and Maintenance of Wheel Washing Bays and Facilities at TMFB;
 4. Operation and Maintenance of Wash House at TMFB;
 5. Personnel Position Tracking and Proximity Detection System of Moving Plant at TMFB;
 6. Operation and Maintenance a Digital Works Supervision System (DWSS) for TMFB;
 7. Operation and Maintenance of Crushing plant at TMFB;
 8. Delivery of public fill to Taishan at TMFB;
 9. Operation of AI System for Crushing Plant at TMFB
 10. Operation of berthing facilities and filling works at Tsang Tsui
 11. Implementation of C Easy system at TMFB
 12. Carry out GCO Probe test and SRT
 13. Operation of recycling public fill as blanket layer material of reclamation projects
 14. Delivery of DSD Material at TMFB
 15. Improvement works along seashore at TMFB
 16. Monitoring of GSM at TMFB
 17. Initial Surevy of TGLA near Kap Tsui Mun bridge (汲水門)

Environmental Monitoring Works

Air Monitoring

No exceedance of Action and Limit levels was recorded for 1-hr and 24-hr TSP monitoring in this quarter.

Marine Water Quality Monitoring

According to the summary of marine water monitoring results, no exceedance of Action and Limit levels was recorded in this quarter.

Noise Monitoring

No exceedance of Action and Limit levels for noise monitoring was recorded in this quarter.

Environmental Complaints, Notification of summons and successful prosecutions

No complaint, notification of summon and prosecution with respect to environmental issues was received in this quarter.

1.0 INTRODUCTION

China Harbour Engineering Co Ltd (CHEC) appointed Environmental Team (ET) of ETS-Testconsult Limited (ETL) to undertake the Environmental Monitoring and Audit (EM&A) for the “Contract No: CV/2023/10 – Handling of Surplus Public Fill (2024-2027) – Tseung Kwan O (TKO) Area 137 Fill Bank” (The Project).

In accordance with the Condition 4 of Part C of Environmental Permit (No.: EP-210/2005/F) (the EP), an EM&A programme as set out in the Project Profile should be implemented. The EM&A programme requires environmental monitoring for air quality, water quality and environmental site inspections for air quality, noise quality, water quality, landscape and visual, and waste management.

Baseline monitoring was completed in May 2003 by Stanger Asia Ltd. Action and Limit Levels were established for air and water quality parameters based on the baseline monitoring results.

This quarterly report documented the findings of EM&A Works conducted during the operation phase of Fill Bank at Tuen Mun Area 38 from April 2025 to June 2025.

2.0 PROJECT INFORMATION

2.1 Work Programme in this Reporting Quarter

Details of work programme are shown in Appendix G.

2.2 Project Organization and Management Structure

The project organization chart is shown in Appendix A.

2.3 Contact Details of Key Personnel

The key personnel contact names and telephone numbers are shown in Table 2.1.

Table 2.1 Contact Details of Key Personnel

Organization	Name of Key Staff	Project Role	Tel. No.	Fax No.
CEDD	Mr. C W Au Yeung, Andrew Cheung	Engineer's Representative	2623 9267/ 2762 5588	2714 0113
IEC (Umwelt)	Mr. Ivan Ting	IEC	3756 9590	3582 3310
Contractor (CHZH-JV)	Zhou Chang Ying	Senior Project Manager	96266299	22474108
ET (ETL)	C. L. Lau	ET Leader	2946 7791	2695 3944

3.0 SUMMARY OF EM&A REQUIREMENTS

3.1 EM&A Programme

The EM&A programme required environmental monitoring for air, marine water and environmental site inspections for air, marine water, landscape and visual, and waste management. The EM&A requirements for each parameter described in the following sections include:

- All monitoring parameters;
- Monitoring schedules for the reporting month and forthcoming months;
- Action and Limit levels for all environmental parameters;
- Event/Action Plans;
- Environmental mitigation measures, as recommended in the Project EIA study final report; and
- Environmental requirements in contract documents.

The advice on implementation status of environmental protection and pollution control/mitigation measures is summarized in Section 5 of the Report.

3.2 Monitoring Stations and Parameters

The EM&A Manual designates several locations to monitor environmental impacts in terms of air quality, noise and water quality due to the Project. The description and detailed locations of monitoring stations for air quality, noise and marine water quality are shown in Figures 1, 2 and 3 and relevant sections of this Report.

3.3 Monitoring Methodology and Calibration Details

All monitoring works were conducted and monitoring equipment was calibrated in according with the EM&A Manual.

3.4 Environmental Quality Performance Limits (Action/Limit Levels)

The environmental quality performance limits, i.e. Action/Limit Levels (AL Levels) were derived from the baseline monitoring results. If the measured environmental quality parameters exceed the AL Levels, the respective action plan will be implemented. The AL Levels for each monitoring parameter are given in Appendix E. The event action plan is given in Appendix F.

3.5 Environmental Mitigation Measures

Relevant mitigation measures were recommended in the EM&A Manual for the Contractor to implement. A list of mitigation measures is given in Appendix H.

4.0 MONITORING RESULTS

4.1 Air Quality

In accordance with the EM&A Manual, 1-hr and 24-hr TSP air quality monitoring are to be conducted three times and one time per six days correspondingly. In the reporting quarter, no exceedances of Action and Limit levels were recorded for 1-hr and 24-hr TSP monitoring. The monitoring trend of air quality during the reporting quarter are given in Appendix B.

Major dust sources in the Fill Bank were dump truck traffic and hauling activities.

Table 4.1 presents the number of exceedances recorded in each month of the reporting quarter. The number of monitoring event included regular monitoring events and additional ones.

Table 4.1 Summary of Number of Exceedances for 1-hr and 24-hr TSP Monitoring

Monitoring Parameter	Level of Exceedance	April 2025	May 2025	June 2025
24-hr TSP	No of monitoring events	5	5	5
	Action Level	0	0	0
	Limit Level	0	0	0
1-hr TSP	No of monitoring events	16	15	15
	Action Level	0	0	0
	Limit Level	0	0	0

4.2 Noise

Since Lands Dept did not approve to carry out noise monitoring at their own area where the noise monitoring stations TM-N1 and TM-N2 located due to the security, noise monitoring carried out at two noise monitoring stations TM-RN1 and TM-RN2 (refer to the figure attached) from 18 December 2007.

No exceedance was recorded in this reporting quarter. The trend of noise monitoring during the reporting quarter is presented in Appendix C.

4.3 Marine Water Quality

In accordance with the Project Profile, impact marine water quality monitoring was conducted at two control monitoring stations (TM-FC1 and TM-FC2) and two impact monitoring stations (TM-FM1 and TM-FM2) in this quarter.

Impact marine water quality monitoring was conducted three days per week. Measurements were taken at both mid-ebb and mid-flood tides at three depths (i.e. 1m below surface, mid depth and 1m above seabed). The AL Levels are included in Appendix E.

According to the summary of marine water monitoring results, no exceedance of action and limit level was recorded in this quarter. Table 4.2 presents the total number of marine water quality exceedances in the reporting quarter. The trend of marine water quality in the past three months is depicted in Appendix D.

Table 4.2 Total Number of Marine Water Quality Exceedances in this quarter

Parameter	Exceedance Level	April 2025	May 2025	June 2025
Number of monitoring days		14	13	13
Dissolved Oxygen, DO (S&M)	Action	0	0	0
	Limit	0	0	0
Dissolved Oxygen, DO (B)	Action	0	0	0
	Limit	0	0	0
Turbidity	Action	0	0	0
	Limit	0	0	0
Suspended Solids, SS	Action	0	0	0
	Limit	0	0	0

A comparison between the quarterly mean/median of SS and the 1.3 times of the baseline mean was made for each tide at each station. The statistical analysis results are given in Appendix I. Monitoring stations with significant difference ($p < 0.05$) is summarized in Table 4.3.

Table 4.3 Summary of Statistically Significant Results of SS

Monitoring Station		Significant difference	
		Mid-flood	Mid-ebb
Designated Control Station	FC1	0	0
	FC2	0	0
Designated Monitoring Station	FM1	0	0
	FM2	0	0

5.0 INSPECTION RESULTS

5.1 Implementation Status of Environmental Mitigation Measures

ET conducted weekly site inspections to monitor the Contractor's implementation of environmental mitigation measures. In this reporting period, thirteen weekly site inspections were conducted.

Air quality was the major environmental issue in the reporting quarter. The Contractor generally implemented most of the environmental mitigation measures in the reporting quarter. Dump truck traffic was the major dust source in the Fill Bank. Generally, the Contractor implemented adequate dust mitigation measures in the reporting quarter including dampening of haul roads, water spraying on the truckloads, during loading and unloading of material and for crushing plant, operation of automatic wheel washing facilities, dampening of fill material prior to handling or stockpiling, etc.

The major noise source was dump truck traffic in the Fill Bank. All site equipment and machinery were well maintained and no noise nuisance was observed during operating.

Drainage channels and wastewater treatment facilities were found maintained in good condition for merit function. The Contractor arranged site workers to clean up the silt and mud regularly.

Although there were a few observations regarding accumulation of mud and silt inside the drainage channel and stagnant water, the Contractor rectified most of these problems. Besides, the Contractor was reminded to clear the accumulated mud and silt to avoid any blockage and clean the stagnant water properly.

Overall site area was found tidy and clean. The Contractor was reminded to collect and dispose of the general refuse and other C&D waste in a timely manner.

5.2 Status of Environmental Licensing and Permitting

The status of licences and permits is summarized in Table 5.1.

Table 5.1 Summary of environmental licensing and permit status

Description	Permit No.	Valid Period		Section
		From	To	
Environmental Permit	EP-210/2005/F	01/01/24	--	Issued
Chemical Waste Producer	5296-421-C4992-01	20/04/17	---	Spent battery containing heavy metals and spent lubricating oil
Effluent Discharge License	WT00042755-2022	21/02/23	29/02/28	Effluent arising from vehicle washing and dust suppression activities and contaminated surface runoff treated by screening facilities and sedimentation tanks (sedimentation and chemical precipitation).
Marine Dumping Permit	EP/MD/26-005	12/06/25	31/07/25	Approval for dumping 499,999 tons (approximately equal to 277,777 cu.m. bulked quantity) of Public Fill (Reclamation Materials) from Tseung Kwan O Area 137 Fill Bank and Tuen Mun Area 38 Fill Bank to designated dumping area at Guanghaiwan of Taishan
Billing Account for Waste Disposal	7051970	22/05/17	End of project	---
Notification Pursuant to Section 3(1) of the Air Pollution Control (Construction Dust)	10008005	12/04/17	End of project	---

5.3 Advice on Solids and Liquid Waste Management Status

Table 5.2 summarizes data on offsite waste disposal in the quarter.

Table 5.2 Estimated Offsite Waste Disposal in the Reporting Quarter

Waste Type	April 2025	May 2025	June 2025
Public Fill ('000m ³)	0	0	0
C&D Waste (general refuse) ('000kg)	24.41	47.60	40.22
Chemical Waste e.g. Waste oil (L) / Chemical Waste (kg)	0(L)	0(L)	0(L)

6.0 NON-COMPLIANCE OF THE ENVIRONMENTAL QUALITY PERFORMANCE LIMITS

6.1 Summary of Non-compliance

According to the monitoring results, no action and limit level exceedance was recorded in this quarter.

6.2 Review of the Reasons for and the Implications of Non-compliance

Since no non-compliance was recorded in this quarter, no review was required.

6.3 Summary of Actions Taken

Since no exceedance was recorded in this quarter, no further action was required.

6.4 Summary of Environmental Complaint, Notification of Summon and Successful Prosecution Handling

No complaint, notification of summon and prosecution with respect to environmental issues was received in this quarter.

A summary of environmental complaints and prosecutions was given in Table 6.1.

Table 6.1 Summary of Environmental Complaints and Prosecutions

<i>Period</i>	<i>Complaints logged</i>	<i>Summon served</i>	<i>Successful Prosecution</i>
<i>April 2025</i>	<i>0</i>	<i>0</i>	<i>0</i>
<i>May 2025</i>	<i>0</i>	<i>0</i>	<i>0</i>
<i>June 2025</i>	<i>0</i>	<i>0</i>	<i>0</i>
<i>Cumulative</i>	<i>11</i>	<i>0</i>	<i>0</i>

7.0 COMMENTS, CONCLUSIONS AND RECOMMENDATION

Major activity in the Fill Bank was the import and dumping of fill materials in this quarter. Air quality was the major environmental issue in the Fill Bank. Generally, the Contractor implemented most of the mitigation measures to minimize the dust impact.

No exceedance of action and limit levels was recorded for 1-hr and 24-hr TSP monitoring in the reporting quarter.

According to the marine water monitoring results in this quarter, no exceedance of action and limit level was recorded.

The noise level measured at the monitoring station complied with the Limit Level of 65dB(A). No complaint was received regarding noise issue in this reporting quarter.

No complaint, prosecution or notification of summons was received in this quarter.

According to the ET weekly site inspection and IEC site audits carried out in this quarter, it was indicated that site practices of the Contractor were generally undertaken in an environmentally acceptable manner and the overall site environmental performance was up to standard.

According to the environmental site inspections performed in the reporting quarter, the following recommendations were provided:

Air Quality

- Ensure the frequency of water spraying on haul roads, unloading areas and stockpiles to be sufficient to suppress the dust sources;
- Provide proper maintenance for the powered mechanical equipment and barges to avoid emission of dark smoke;
- Provide water spraying onto the truckloads during inspection of fill material;

- Conduct road sweeping on all paved haul roads and public roads especially outside and near the site egress by the road sweeper. Undertake water spraying on stockpiling area by water bowser;
- Erect adequate speed limit signs to advise the truck drivers of the speed limit;
- Operate mist spraying systems and automatic water sprinklers in the Fill Bank;
- Implement the dust mitigation measures for the construction activities;
- Designate proper haul roads to ensure effective water spraying; and
- Ensure all vehicles to be washed before leaving the site egress by provision, operation and maintenance of automatic wheel washing facilities.

Noise

- Conduct noisy activities at a farther location from the NSRs.
- Proper schedule of noisy operation and use of quiet machineries on site.

Water Quality

- Maintain the drainage system, including the trapezoidal channels and permanent desilting chambers regularly; and
- Remove the stagnant water or provide approved pesticides for the stagnant water in the permanent desilting chambers, if any.

Chemical and Waste Management

- Remove waste materials from the site to avoid accumulation regularly;
- Handle and store chemical wastes properly;
- Remove unwanted material in the existing stockpiles and avoid further dumping of such material;
- Provide and maintain sufficient drip trays for diesel drums, chemical containers, chemical waste storage drums and diesel operated generator set;
- Maintain good housekeeping at the workshop area;
- Ensure sufficient tarpaulin sheets are provided to cover drip trays; and
- Avoid soil being polluted during oil filling and equipment maintenance; hence, properly remove and store the contaminated soil, if any.

Landscape and Visual

- Provide hydroseeding on the exposed slopes, on which the final profile has been formed;
- Erect all the site hoarding/chaining fences in accordance with agreed design at proper location; and
- Maintain the hydroseeding slopes in accordance with the Landscape Plan.

- END OF REPORT -

Appendix A

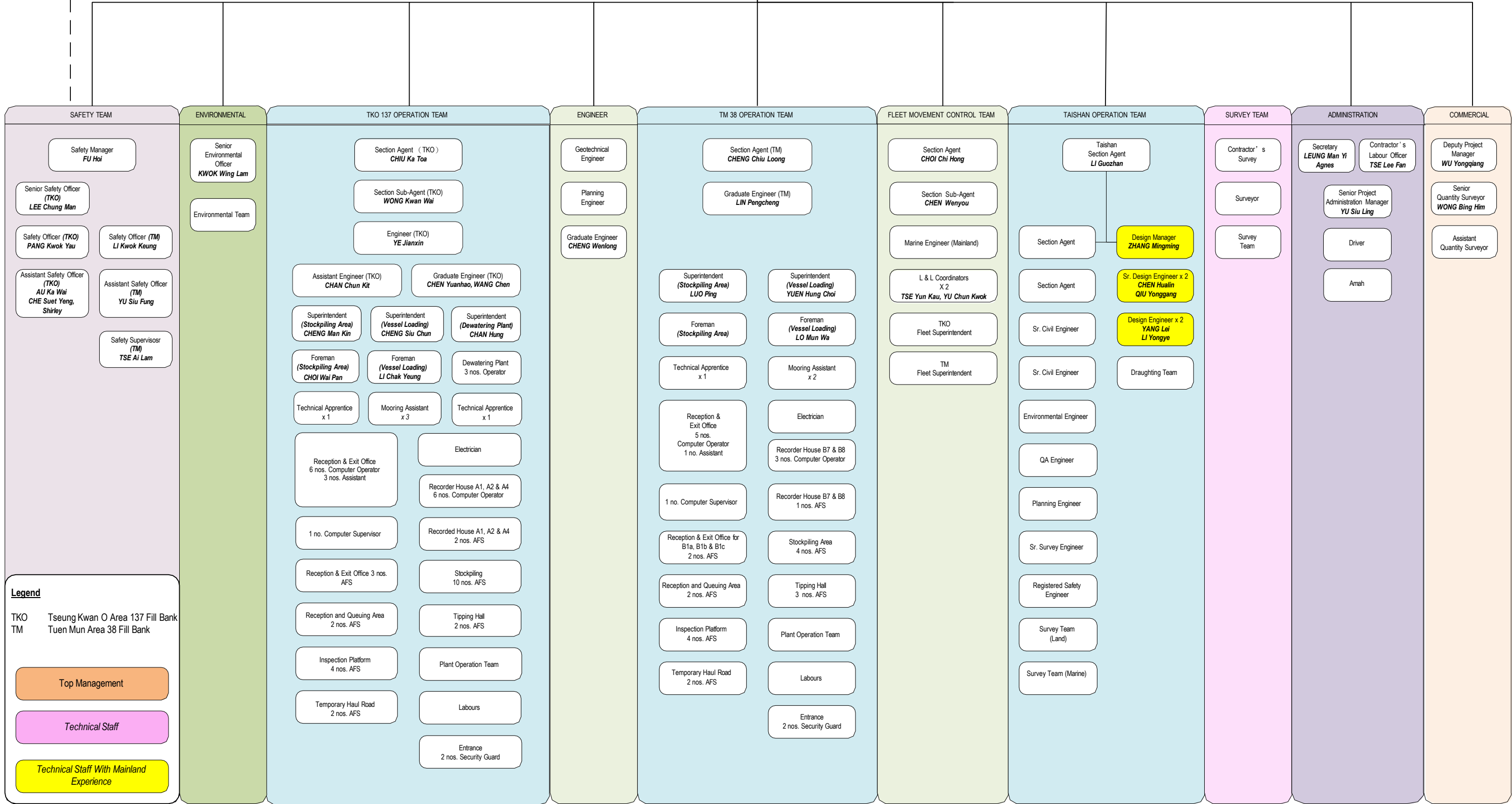
Organization Chart

CHCC MANAGEMENT BOARD
XUE Yong, YANG Lu, LU Shizhao

Assistant General Manager / Project Director /
Construction Manager
ZHOU Chang Ying

Site Agent
PAN Wing On

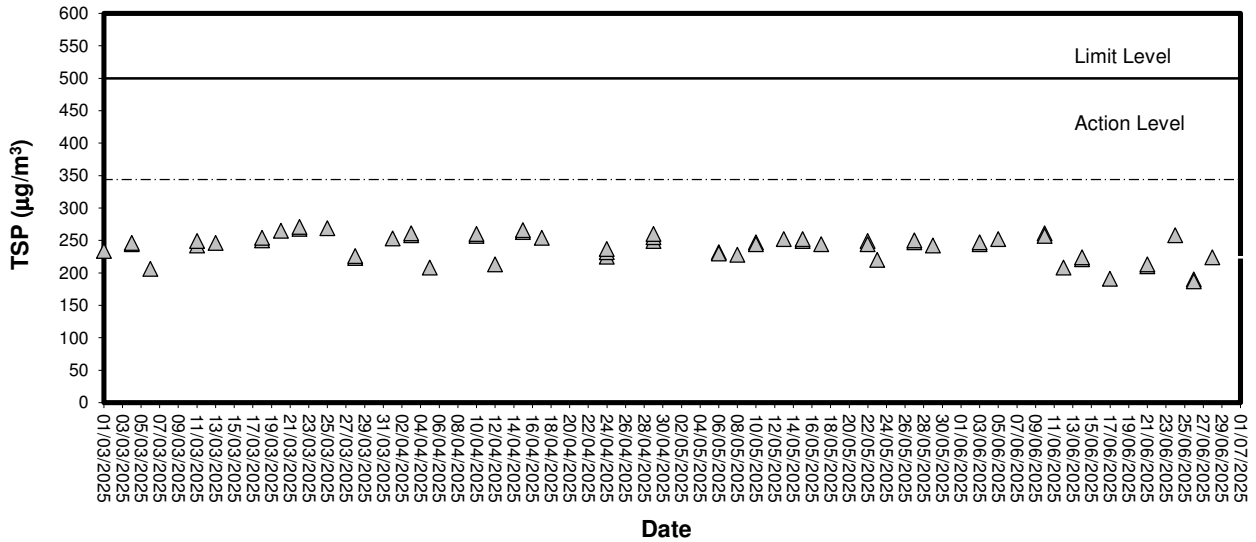
Health & Safety
General Manager
SO Sze Lung



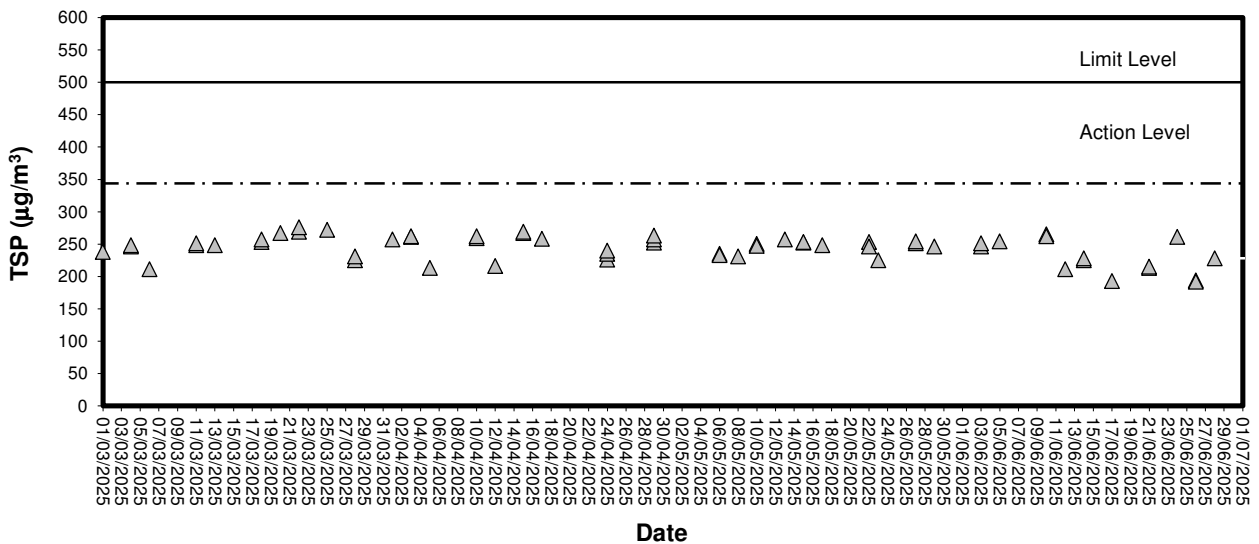
Appendix B

Graphical Plots of Air Quality Monitoring Data

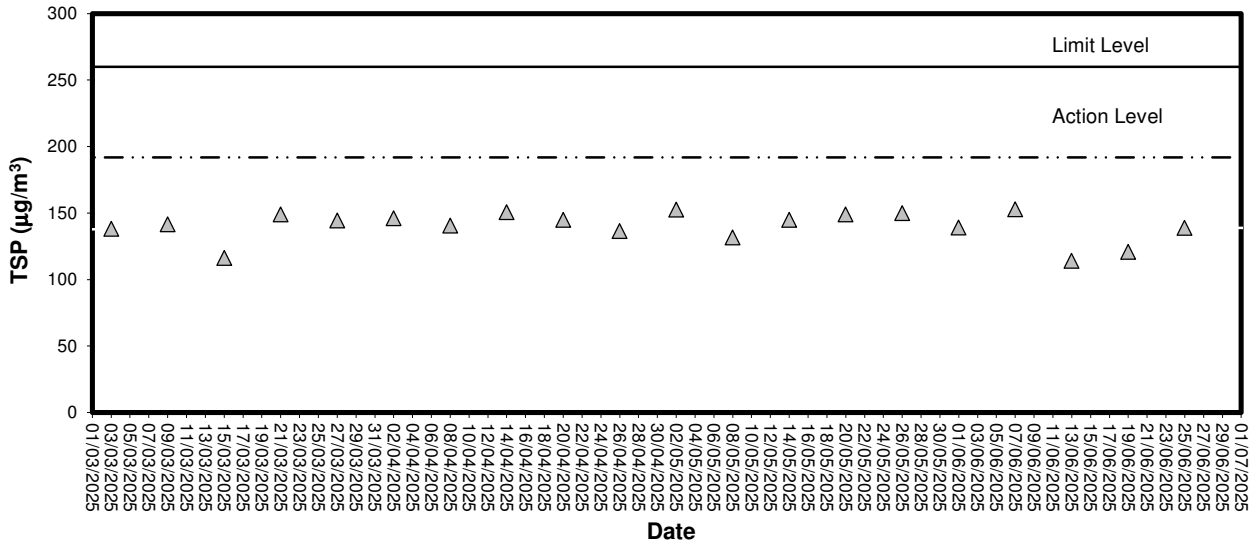
1-hour TSP level at TM-A1



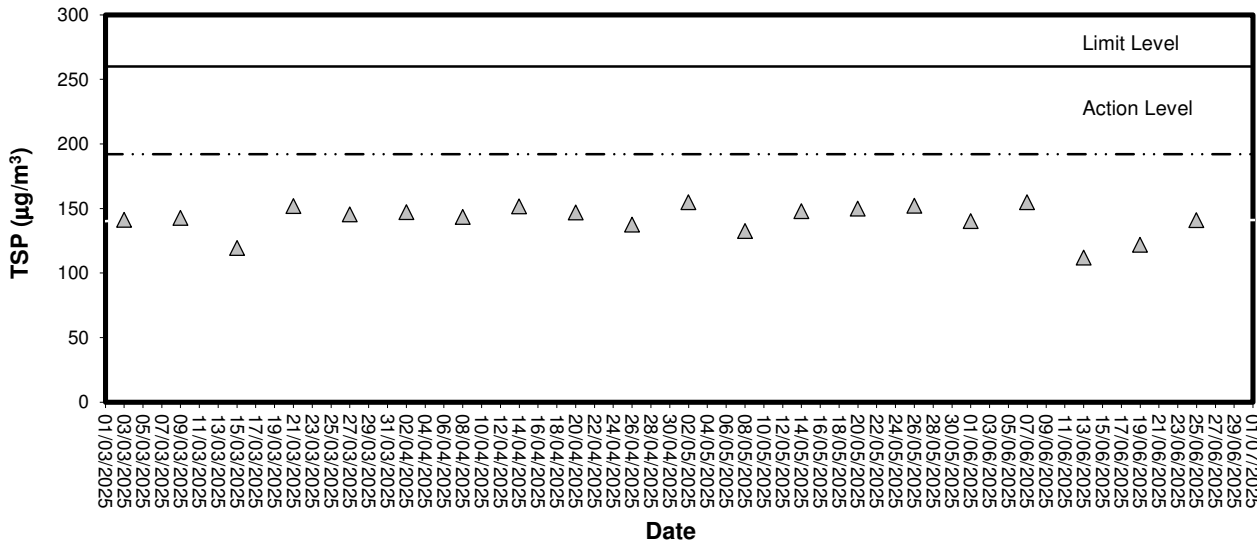
1-hour TSP level at TM-RA2



24-hour TSP level at TM-A1



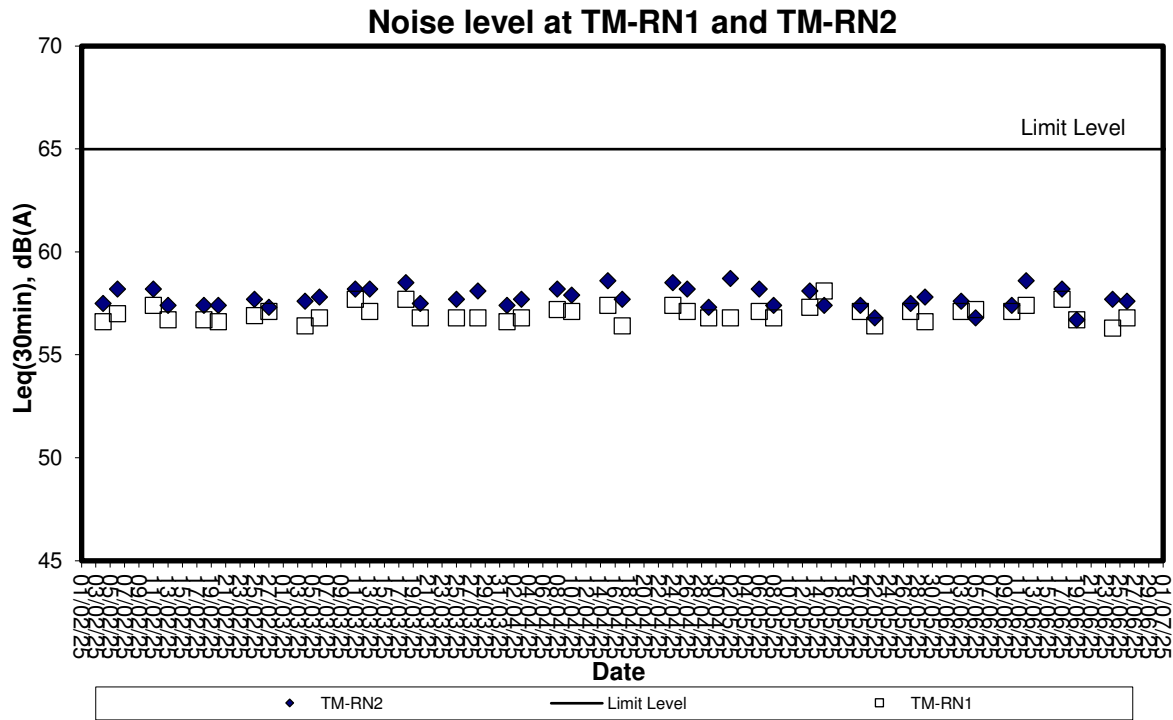
24-hour TSP level at TM-RA2



Appendix C

Graphical Plots of Impact Noise Monitoring Data

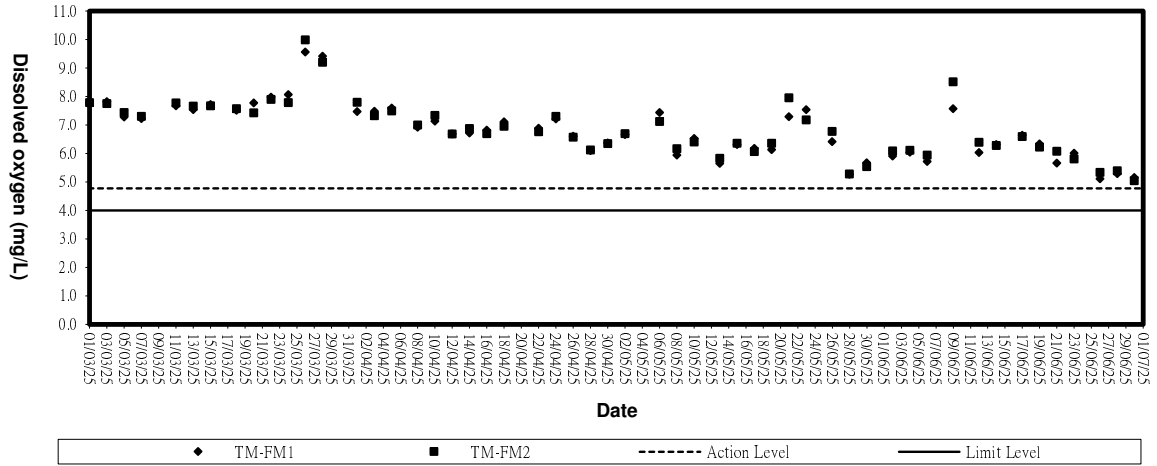
Noise Monitoring (Day-time)



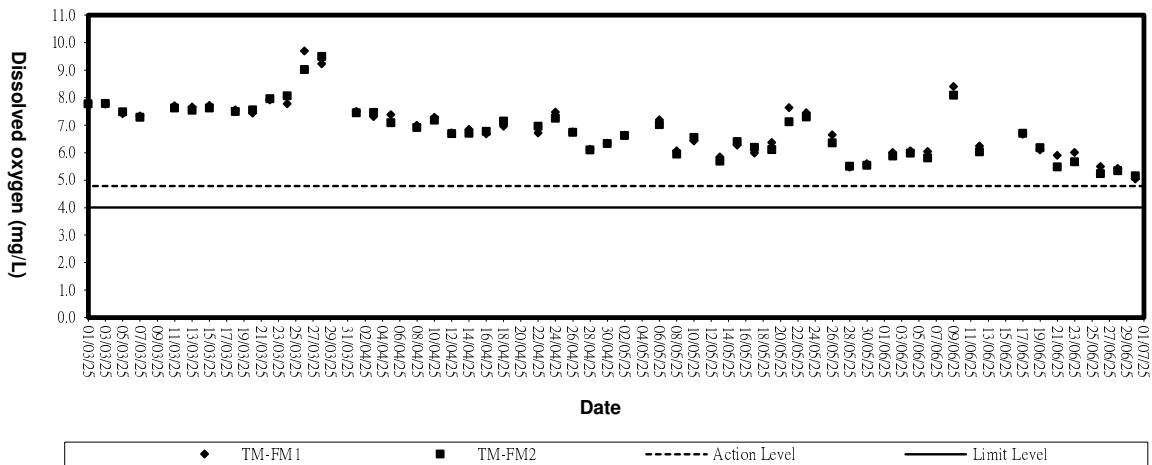
Appendix D

Graphical Plots of Impact Marine Water Quality Monitoring Data

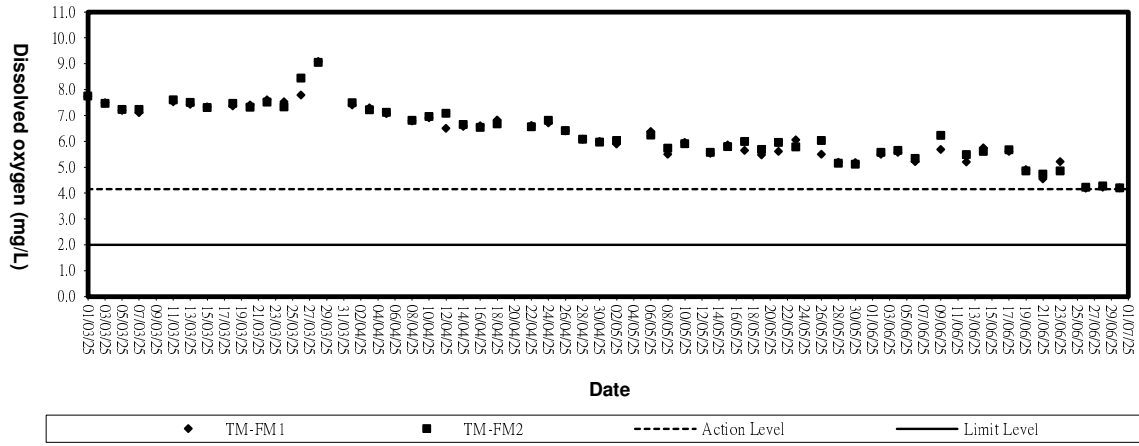
Dissolved Oxygen (Surface & Middle) at Mid-Flood Tide



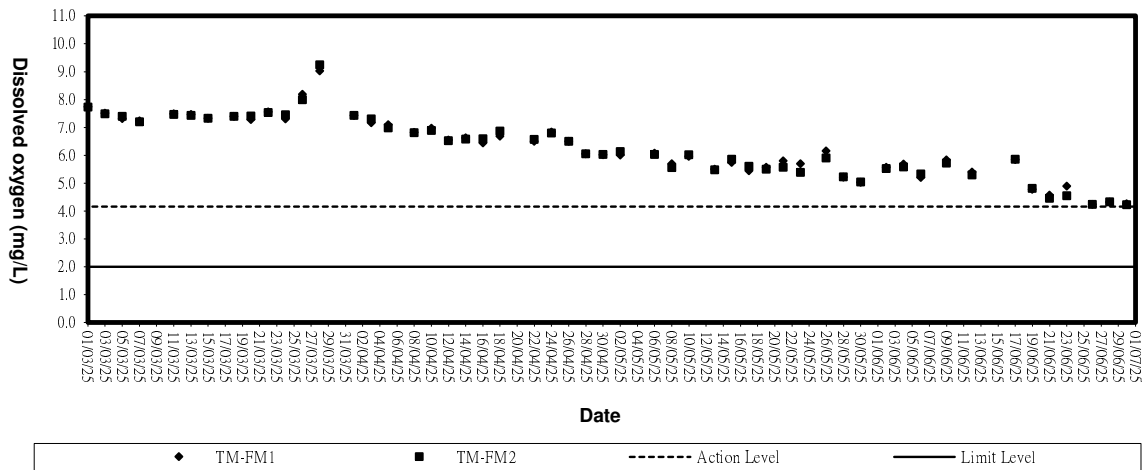
Dissolved Oxygen (Surface & Middle) at Mid-Ebb Tide



Dissolved Oxygen (Bottom) at Mid-Flood Tide

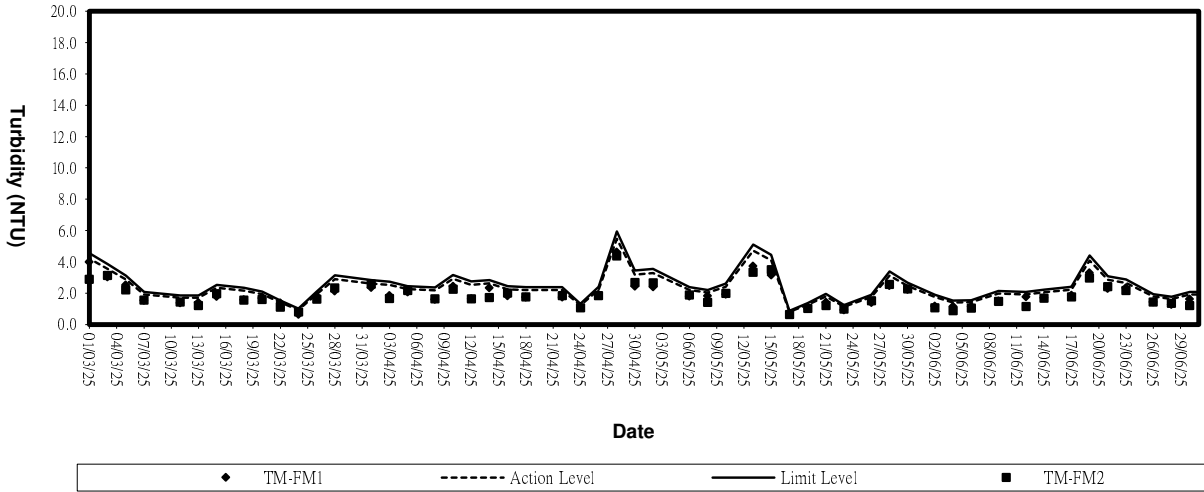


Dissolved Oxygen (Bottom) at Mid-Ebb Tide

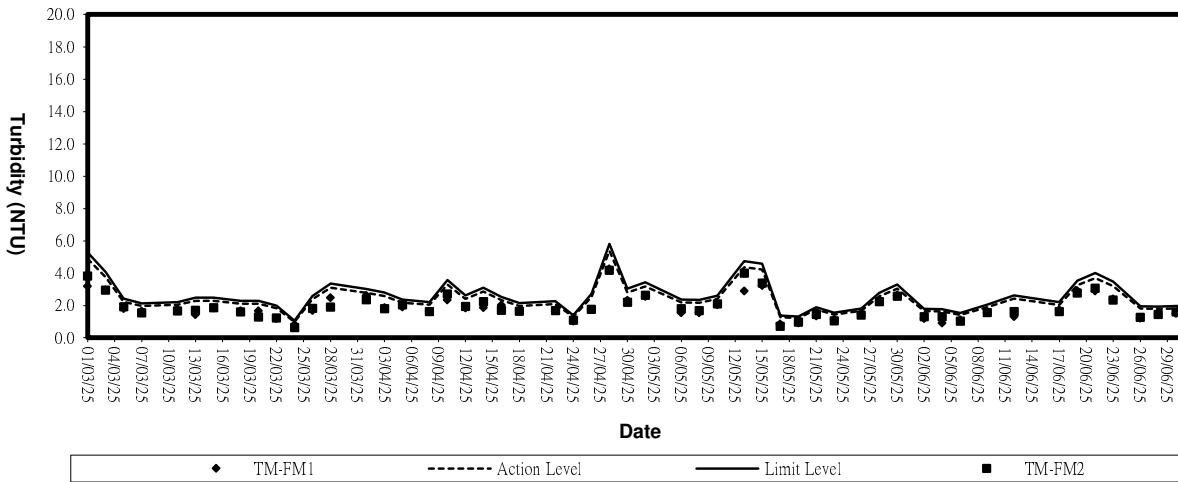




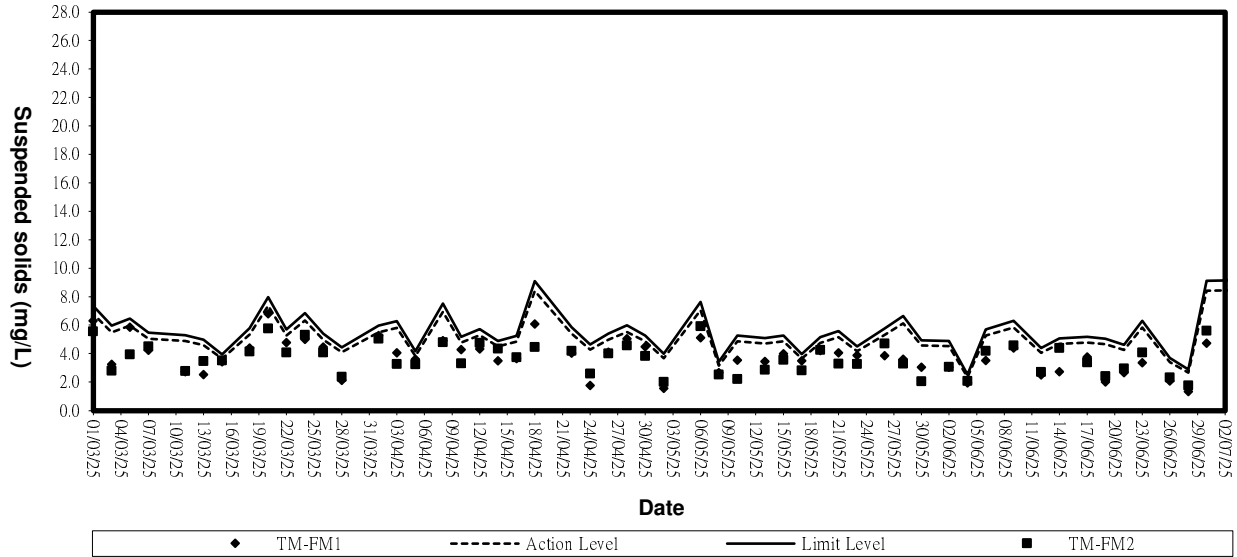
Turbidity (Depth-average) at Mid-Flood Tide



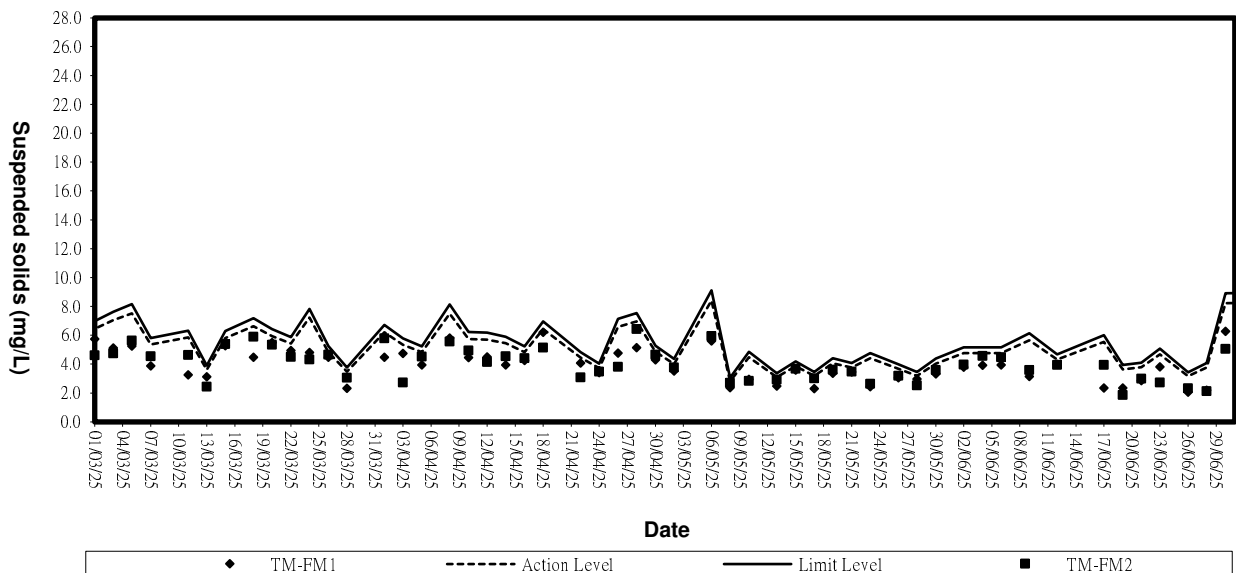
Turbidity (Depth-average) at Mid-Ebb Tide



Suspended solids (Depth-average) at Mid-Flood Tide



Suspended Solids (Depth-average) at Mid-Ebb Tide



Appendix E

Environmental Quality Performance (Action / Limit Levels)

Action and Limit Levels for 1-hour TSP and 24-hour TSP Monitoring

Monitoring Location	24-hr TSP ($\mu\text{g}/\text{m}^3$)		1-hr TSP ($\mu\text{g}/\text{m}^3$)	
	Action Level	Limit Level	Action Level	Limit Level
TM-A1	192	260	344	500
TM-A2	192	260	344	500

Action and Limit Levels for Marine Water Quality Monitoring

Parameter	Action Level	Limit Level
DO (mg/L)	<u>Surface & Middle</u> <4.78 mg/L (5%-ile of baseline data) <u>Bottom</u> <4.16 mg/L (5%-ile of baseline data)	<u>Surface & Middle</u> <4.00 mg/L (1%-ile of baseline data) <u>Bottom</u> <2.00 mg/L
SS (mg/L) (Depth-averaged)	>120% of the upstream control station's SS at the same tide on the same day	>130% of the upstream control station's SS at the same tide on the same day
Turbidity (NTU) (Depth-averaged)	>120% of the upstream control station's turbidity at the same tide on the same day	>130% of the upstream control station's turbidity at the same tide on the same day

Action and Limit Levels for Noise Monitoring

Time Period	Action *	Limit *
0700-1900 hrs on normal weekdays	When one documented complaint is received	65 dB(A)

Appendix F

Event-Action Plans

EVENT/ACTION PLAN FOR AIR QUALITY EXCEEDANCE			
EVENT	ET Leader	ACTION	
		IC(E)	ER
		ACTION LEVEL	
1. Exceedance for one sample	<ol style="list-style-type: none"> Identify source, investigate the causes of exceedance and propose remedial measures Inform ET, IC(E) and Contractor Repeat measurement to confirm finding Increase monitoring frequency to daily 	<ol style="list-style-type: none"> Check monitoring data submitted by the ET Check contractor's working method 	<ol style="list-style-type: none"> Notify Contractor
2. Exceedance for two or more consecutive samples	<ol style="list-style-type: none"> Identify source, investigate the causes of exceedance and propose remedial measures Inform IC(E) and Contractor Repeat measurements to confirm finding Increase monitoring frequency to daily Discuss with IC(E) and Contractor on remedial actions If exceedance continues, arrange meeting with IC(E) and ER. If exceedance stops, cease additional monitoring 	<ol style="list-style-type: none"> Check monitoring data submitted by the ET Check the Contractor's working method Discuss with ET and Contractor on possible remedial measures Advise the ER on the effectiveness of the proposed remedial measures Supervise implementation of remedial measures 	<ol style="list-style-type: none"> Confirm receipt of notification of failure in writing Notify the Contractor Ensure remedial measures properly implemented
		LIMIT LEVEL	
1. Exceedance for one sample	<ol style="list-style-type: none"> Identify source, investigate the causes of exceedance and propose remedial measures Inform ET, Contractor and EPD Repeat measurement to confirm finding Increase monitoring frequency to daily Assess the effectiveness of Contractor's remedial actions and keep IC(E), EPD and ER informed of the results 	<ol style="list-style-type: none"> Check monitoring data submitted by the ET Check Contractor's working method Discuss with ET and Contractor on possible remedial measures Advise the ER on the effectiveness of the proposed remedial measures Supervise implementation of remedial measures 	<ol style="list-style-type: none"> Confirm receipt of notification of failure in writing Notify the Contractor Ensure remedial measures properly implemented
			Contractor
			<ol style="list-style-type: none"> Rectify any unacceptable practise Amend working methods if appropriate
			<ol style="list-style-type: none"> Submit proposals for remedial actions to IC(E) within 3 working days of notification Implement the agreed proposals Amend proposal if appropriate
			<ol style="list-style-type: none"> Take immediate action to avoid further exceedance Submit proposals for remedial actions to IC(E) within 3 working days of notification Implement the agreed proposals Amend proposal if appropriate.

EVENT/ACTION PLAN FOR AIR QUALITY EXCEEDANCE			
EVENT	ACTION		
	ET Leader	IC(E)	ER
2. Exceedance for two or more consecutive samples	<ol style="list-style-type: none"> 1. Identify source, investigate the causes of exceedance and propose remedial measures 2. Notify IC(E), ER, EPD and Contractor 3. Repeat measurement to confirm finding 4. Increase monitoring frequency to daily 5. Carry out analysis of contractor's working procedures to determine possible mitigation to be implemented 6. Arrange meeting with IC(E) and ER to discuss the remedial actions to be taken 7. Assess effectiveness of Contractor's remedial actions and keep IC(E), EPD and ER informed of the results 8. If exceedance stops, cease additional monitoring 	<ol style="list-style-type: none"> 1. Discuss amongst ER, ET and Contractor on the potential remedial actions 2. Review Contractor's remedial actions whenever necessary to assure their effectiveness and advise the ER accordingly 3. Supervise the implementation of remedial measures 	<ol style="list-style-type: none"> 1. Confirm receipt of notification of failure in writing 2. Notify Contractor 3. In consultation with the IC(E), agree with the Contractor on the remedial measures to be implemented 4. Ensure remedial measures are properly implemented 5. If exceedances continues, consider what portion of the work is responsible and instruct the Contractor to stop that portion of work until the exceedance is abated
			<ol style="list-style-type: none"> 1. Take immediate action to avoid further exceedances 2. Submit proposals for remedial actions to IC(E) within 3 working days of notification 3. Implement the agreed proposals 4. Resubmit proposals if problem still not under control 5. Stop the relevant activity of works as determined by the ER until the exceedance is abated

1 2 3 4 5 6 7 8 9 10 11 12 13 14 15 16 17 18 19 20 21 22 23 24 25 26 27 28 29 30 31 32 33 34 35 36 37 38 39 40 41 42 43 44 45 46 47 48 49 50 51 52 53 54 55 56 57 58 59 60 61 62 63 64 65 66 67 68 69 70 71 72 73 74 75 76 77 78 79 80 81 82 83 84 85 86 87 88 89 90 91 92 93 94 95 96 97 98 99 100

EVENT/ACTION PLAN FOR NOISE EXCEEDANCE

EVENT	ACTION			
	ET Leader	IC(E)	ER	Contractor
Action Level	<ol style="list-style-type: none"> 1. Notify the IC(E) and the Contractor. 2. Carry out investigation. 3. Report the results of investigation to the IC(E) and the Contractor. 4. Discuss with the Contractor and formulate remedial measures. 5. Increase monitoring frequency to check mitigation effectiveness 	<ol style="list-style-type: none"> 1. Review the analysed results submitted by the ET. 2. Review the proposed remedial measures by the Contractor and advise the ER accordingly. 3. Supervise the implementation of remedial measures. 	<ol style="list-style-type: none"> 1. Confirm receipt of notification of failure in writing. 2. Notify the Contractor. 3. Require the Contractor to propose remedial measures for the analysed noise problem. 4. Ensure remedial measures are properly implemented. 	<ol style="list-style-type: none"> 1. Submit noise mitigation proposals to IC(E). 2. Implement noise mitigation proposals.
Limit Level	<ol style="list-style-type: none"> 1. Notify the IC(E), the ER, the EPD and the Contractor. 2. Identify source. 3. Repeat measurement to confirm findings. 4. Increase monitoring frequency. 5. Carry out analysis of Contractor's working procedures to determine possible mitigation to be implemented. 6. Inform the IC(E), the ER and the EPD the causes & actions taken for the exceedances. 7. Assess effectiveness of Contractor's remedial actions and keep the IC(E), the EPD and the ER informed of the results 8. If exceedance due to the construction works stops, cease additional monitoring 	<ol style="list-style-type: none"> 1. Discuss amongst the ER, the ET Leader and the Contractor on the potential remedial actions. 2. Review the Contractor's remedial actions whenever necessary to assure their effectiveness and advise the ER accordingly. 3. Supervise the implementation of remedial measures. 	<ol style="list-style-type: none"> 1. Confirm receipt of notification of failure in writing. 2. Notify the Contractor. 3. Require the Contractor to propose remedial measures for the analysed noise problem. 4. Ensure remedial measures are properly implemented. 5. if exceedances continue, consider what activity of the work is responsible and instruct the Contractor to stop that activity of work until the exceedances is abated. 	<ol style="list-style-type: none"> 1. Take immediate action to avoid further exceedance 2. Submit proposals for remedial actions to IC(E) within 3 working days of notification. 3. Implement the agreed proposals. 4. Resubmit proposals if problem still not under control. 5. Stop the relevant activity of works as determined by the ER until the exceedances is abated.

EVENT AND ACTION PLAN FOR WATER QUALITY EXCEEDANCE				
Event	ACTION			
	ET Leader	Contractor	ER	
<p>Action level being exceeded by one sampling day</p>	<ol style="list-style-type: none"> 1. Identify source(s) of impact; 2. Repeat in-situ measurement to confirm findings; 3. Notify Contractor in writing within 24 hours of identification of the exceedance 4. Check monitoring data, all plant, equipment and Contractor's working methods; 5. Carry out investigation 6. Report the results of investigation to the Contractor within 3 working days of identification of exceedance and advise contractor if exceedance is due to contractor's construction works 7. Discuss mitigation measures with Contractor if exceedance is due to the construction works within 4 working days 8. Repeat measurement on next day of exceedance if exceedance is due to the construction works 	<ol style="list-style-type: none"> 1. Notify the ER and IEC in writing within 24 hours of identification of exceedance 2. Rectify unacceptable practice; 3. Check all plant and equipment; 4. Submit investigation report to IEC and ER within 3 working days of the identification of an exceedance 5. Consider changes of working method if exceedance is due to the construction works 6. Discuss with ET, IEC and ER and propose mitigation measures to IEC and ER if exceedance is due to the construction works within 4 working days of identification of an exceedance 7. Implement the agreed mitigation measures within reasonable time scale 	<ol style="list-style-type: none"> 1. Notify EPD and other relevant governmental agencies in writing within 24 hours of the identification of the exceedance 2. Discuss with IEC, ET and Contractor on the proposed mitigation measures; 3. Require contractor to propose remedial measures for the analysed problem if related to the construction works 4. Ensure remedial measures are properly implemented 5. Assess the effectiveness of the mitigation measure 	<ol style="list-style-type: none"> 1. Check monitoring data submitted by ET 2. Confirm ET assessment if exceedance is due / not due to the works 3. Discuss with ET, ER and Contractor on the mitigation measures 4. Review contractor's mitigation measures whenever necessary to ensure their effectiveness and advise the ER accordingly 5. Supervise the implementation of mitigation measures

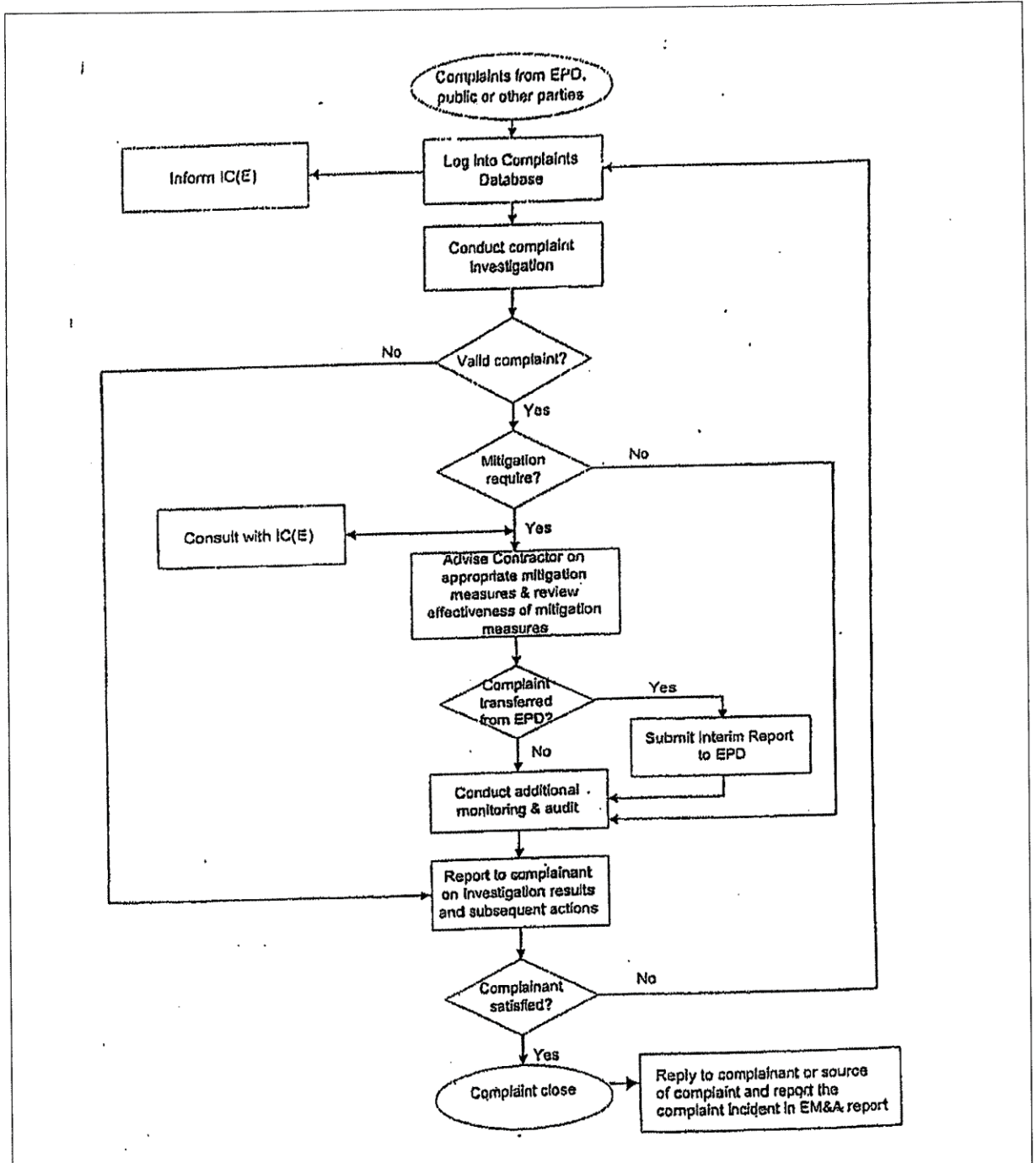
1 2 3 4 5 6 7 8 9 10 11 12 13 14 15 16 17 18 19 20 21 22 23 24 25 26 27 28 29 30 31 32 33 34 35 36 37 38 39 40 41 42 43 44 45 46 47 48 49 50 51 52 53 54 55 56 57 58 59 60 61 62 63 64 65 66 67 68 69 70 71 72 73 74 75 76 77 78 79 80 81 82 83 84 85 86 87 88 89 90 91 92 93 94 95 96 97 98 99 100

EVENT AND ACTION PLAN FOR WATER QUALITY			
Event	ACTION		
	ET Leader	Contractor	IER
<p>Action level exceeded by more than one consecutive sampling days</p>	<ol style="list-style-type: none"> Identify source(s) of impact; Repeat in-situ measurement to confirm findings Notify Contractor in writing within 24 hours of identification Check monitoring data, all plant, equipment and Contractor's working methods; Carry out investigation Report the results of investigation to the Contractor within 3 working days of identification of exceedance and advise contractor if exceedance is due to contractor's construction works Discuss mitigation measures with IEC and Contractor within 4 working of identification of an exceedance Ensure mitigation measures are implemented; Prepare to increase the monitoring frequency to daily; Repeat measurement on next day of exceedance. 	<ol style="list-style-type: none"> Notify IEC and ER in writing within 24 hours of identification of exceedance Rectify unacceptable practice; Check all plant and equipment; Consider changes of working methods; Submit the results of the investigation to IEC and ER within 3 working days of the identification of an exceedance Discuss with ET, IEC and ER and propose mitigation measures to IEC and ER within 4 working days of identification of an exceedance Implement the agreed mitigation measures within reasonable time scale 	<ol style="list-style-type: none"> Notify EPD and other relevant governmental agencies in writing within 24 hours of the identification of the exceedance Discuss with IEC, ET and Contractor on the proposed mitigation measures; Require contractor to propose remedial measures for the analysed problem if related to the construction works Ensure remedial measures are properly implemented Assess the effectiveness of the mitigation measure
			<ol style="list-style-type: none"> Check monitoring data submitted by ET Confirm ET assessment if exceedance is due / not due to the works Discuss with ET, ER and Contractor on the mitigation measures. Review contractor's mitigation measures whenever necessary to ensure their effectiveness and advise the ER accordingly Assess the effectiveness of the implemented mitigation measures.

EVENT AND ACTION PLAN FOR WATER QUALITY EXCEEDANCE			
Event	ACTION		
	ET Leader	Contractor	IER
Limit level being exceeded by one sampling day	<ol style="list-style-type: none"> 1. Repeat in-situ measurement to confirm findings; 2. Identify source(s) of impact; 3. Notify Contractor in writing within 24 hours of identification of the exceedance 4. Check monitoring data, all plant, equipment and Contractor's working methods; 5. Carry out investigation 6. Report the results of investigation to the Contractor within 3 working days of identification of exceedance and advise contractor if exceedance is due to contractor's construction works 7. Discuss mitigation measures with IEC, ER and Contractor within 4 working of identification of an exceedance 8. Ensure mitigation measures are implemented; 9. Increase the monitoring frequency to daily until no exceedance of Limit Level. 	<ol style="list-style-type: none"> 1. Notify IEC and ER in writing; within 24 hours of the identification of the exceedance 2. Rectify unacceptable practice; 3. Check all plant and equipment; 4. Consider changes of working methods; 5. Submit the results of the investigation to IEC and ER within 3 working days of the identification of an exceedance 6. Discuss with ET, IEC and ER and propose mitigation measures to IEC and ER within 4 working days of the identification of an exceedance 7. Implement the agreed mitigation measures within reasonable time scale 	<ol style="list-style-type: none"> 1. Notify EPD and other relevant governmental agencies in writing within 24 hours of identification of exceedance 2. Discuss with IEC, ET and Contractor on the proposed mitigation measures; 3. Request Contractor to critically review the working methods; 4. Ensure remedial measures are properly implemented 5. Assess the effectiveness of the implemented mitigation measures.
			<ol style="list-style-type: none"> 1. Check monitoring data submitted by ET 2. Confirm ET assessment if exceedance is due / not due to the works 3. Discuss with ET, ER and Contractor on the mitigation measures. 4. Review proposals on mitigation measures submitted by Contractor and advise the ER accordingly. 5. Assess the effectiveness of the implemented mitigation measures

1. 2. 3. 4. 5. 6. 7. 8. 9. 10. 11. 12. 13. 14. 15. 16. 17. 18. 19. 20. 21. 22. 23. 24. 25. 26. 27. 28. 29. 30. 31. 32. 33. 34. 35. 36. 37. 38. 39. 40. 41. 42. 43. 44. 45. 46. 47. 48. 49. 50. 51. 52. 53. 54. 55. 56. 57. 58. 59. 60. 61. 62. 63. 64. 65. 66. 67. 68. 69. 70. 71. 72. 73. 74. 75. 76. 77. 78. 79. 80. 81. 82. 83. 84. 85. 86. 87. 88. 89. 90. 91. 92. 93. 94. 95. 96. 97. 98. 99. 100.

| EVENT AND ACTION PLAN FOR WATER QUALITY EXCEEDANCE | | | |
|---|--|--|---|
| Event | ACTION | | |
| | ET Leader | Contractor | IER |
| Limit Level being exceeded by more than one consecutive sampling days | <ol style="list-style-type: none"> 1. Repeat in-situ measurement to confirm findings; 2. Identify source(s) of impact; 3. Notify Contractor in writing within 24 hours of identification of the exceedance 4. Check monitoring data, all plant, equipment and Contractor's working methods; Carry out investigation 5. Report the results of investigation to the Contractor within 3 working days of identification of exceedance and advise contractor if exceedance is due to contractor's construction works 7. Discuss mitigation measures with IEC, ER and Contractor; 8. Ensure mitigation measures are implemented; 9. Increase the monitoring frequency to daily until no exceedance of Limit Level for two consecutive days. | <ol style="list-style-type: none"> 1. Notify ER and IEC in writing within 24 hours of the identification of the exceedance and Rectify unacceptable practice; 2. Check all plant and equipment; 3. Consider changes of working methods; 8. Submit the results of the investigation to IEC and ER within 3 working days of the identification of an exceedance 5. Discuss with ET, IEC and ER and propose mitigation measures to IEC and ER within 4 working days; 6. Implement the agreed mitigation measures within reasonable time scale 7. As directed by the Engineer, to slow down or to stop all or part of the marine work or construction activities. | <ol style="list-style-type: none"> 1. Notify EPD and other relevant governmental agencies in writing within 24 hours of identification of exceedance 2. Discuss with IEC, ET and Contractor on the proposed mitigation measures; 3. Request Contractor to critically review the working methods; 6. Ensure remedial measures are properly implemented 4. Assess the effectiveness of the implemented mitigation measures; 5. Consider and instruct, if necessary, the Contractor to slow down or to stop all or part of the marine work until no exceedance of Limit Level. |
| | | | <ol style="list-style-type: none"> 1. Check monitoring data submitted by ET 2. Confirm ET assessment if exceedance is due / not due to the works 3. Discuss with ER, ET and Contractor on the mitigation measures. 4. Review proposals on mitigation measures submitted by Contractor and advise the ER accordingly. 5. Assess the effectiveness of the implemented mitigation measures. |



Appendix G

Work Programme

| ID | Task Name | Start | Finish | Duration | Predecessors | time risk allowances | Actual Start | Actual Finish | % Complete | Feb '25 | | | | | Mar '25 | | | Apr '25 | | | | | | |
|----|--|--------------|--------------|-----------|--------------|----------------------|--------------|---------------|------------|----------------|---|----|----|----|---------|----|----|---------|----|---|----|----|----|---|
| | | | | | | | | | | 27 | 3 | 10 | 17 | 24 | 3 | 10 | 17 | 24 | 31 | 7 | 14 | 21 | 28 | 5 |
| 31 | Operation and maintenance of the dewatering plant at the Tseung Kwan O Area 137 Fill Bank within portion A of the Site Facility to the Tseung Kwan O Area 137 Fill Bank within Portion A of the Site. | Sun 4/8/24 | Sat 31/7/27 | 1092 days | 26SS | 0 | Sun 4/8/24 | NA | 14% | 1/2/25 30/4/25 | | | | | | | | | | | | | | |
| 32 | Design, construction, operation and maintenance of 3 nos. new tipping halls with access ramp, new barge handling area, and associated seawalls within Portion A of the Site as and when instructed by the Project Manager. | Wed 1/7/26 | Sat 31/7/27 | 396 days | 26SS | | NA | NA | 0% | | | | | | | | | | | | | | | |
| 33 | Submission of design proposals to Project Manager for acceptance | Wed 1/7/26 | Wed 28/10/26 | 120 days | | 0 | NA | NA | 0% | | | | | | | | | | | | | | | |
| 34 | Construction new tipping halls with access ramp, new barge handling area, and associated seawalls within Portion A of the Site | Thu 29/10/26 | Fri 25/6/27 | 240 days | 33 | 0 | NA | NA | 0% | | | | | | | | | | | | | | | |
| 35 | Operation and maintenance the new berthing facilities | Sat 26/6/27 | Sat 31/7/27 | 36 days | 34 | | NA | NA | 0% | | | | | | | | | | | | | | | |
| 36 | Demolition & reconstruction/relocation of existing facilities within Portion A of the Site above as and when instructed by the Project Manager | Tue 1/7/25 | Sat 27/12/25 | 180 days | 26SS | | NA | NA | 0% | | | | | | | | | | | | | | | |
| 37 | Project Manager's Principal Site Office and Secondary Site Office, and Temporary Accommodation for the Contractor | Tue 1/7/25 | Sun 28/9/25 | 90 days | | | NA | NA | 0% | | | | | | | | | | | | | | | |
| 38 | Preparing and submitting a proposal for project manager for acceptance | Tue 1/7/25 | Mon 14/7/25 | 14 days | | 1 | NA | NA | 0% | | | | | | | | | | | | | | | |
| 39 | Construct a new Project Manager's Secondary Site Office | Tue 15/7/25 | Sun 14/9/25 | 62 days | 38 | 0 | NA | NA | 0% | | | | | | | | | | | | | | | |
| 40 | Relocate furniture, office equipment and computer facilities previously installed at the existing Project Manager's Site Office to the new office | Mon 15/9/25 | Sun 28/9/25 | 14 days | 39 | 0 | NA | NA | 0% | | | | | | | | | | | | | | | |
| 41 | Dismantle and re-assemble the existing Project Manager's Principal Site Office to a new location | Tue 15/7/25 | Sun 21/9/25 | 69 days | 38 | 0 | NA | NA | 0% | | | | | | | | | | | | | | | |
| 42 | Demolish the existing Secondary Site Office. | Mon 22/9/25 | Sun 28/9/25 | 7 days | 41 | 0 | NA | NA | 0% | | | | | | | | | | | | | | | |
| 43 | Construction of Temporary Accommodation for the Contractor | Tue 15/7/25 | Sun 28/9/25 | 76 days | 38 | 1 | NA | NA | 0% | | | | | | | | | | | | | | | |
| 44 | New Combined Reception and Exit Offices | Tue 1/7/25 | Tue 28/10/25 | 120 days | | | NA | NA | 0% | | | | | | | | | | | | | | | |
| 45 | Preparing and submitting a proposal to project manager for acceptance | Tue 1/7/25 | Mon 14/7/25 | 14 days | | 0 | NA | NA | 0% | | | | | | | | | | | | | | | |
| 46 | Construction of the new Combined Reception and Exit Offices and new weighbridges | Tue 15/7/25 | Sat 18/10/25 | 96 days | 45 | 0 | NA | NA | 0% | | | | | | | | | | | | | | | |
| 47 | Relocate the existing CWDCMIS to the new CREO office | Sun 19/10/25 | Tue 28/10/25 | 10 days | 46 | 0 | NA | NA | 0% | | | | | | | | | | | | | | | |
| 48 | Construction Concrete Paved Roads to the new Combined Reception and Exit | Tue 1/7/25 | Tue 28/10/25 | 120 days | | | NA | NA | 0% | | | | | | | | | | | | | | | |
| 49 | Preparing and submitting a proposal to project manager for acceptance | Tue 1/7/25 | Mon 14/7/25 | 14 days | | 0 | NA | NA | 0% | | | | | | | | | | | | | | | |
| 50 | Construction of the concrete pave roads | Tue 15/7/25 | Tue 28/10/25 | 106 days | 49 | 0 | NA | NA | 0% | | | | | | | | | | | | | | | |
| 51 | New Integrated Public Fill Reception Platform | Tue 1/7/25 | Tue 28/10/25 | 120 days | | | NA | NA | 0% | | | | | | | | | | | | | | | |
| 52 | Preparing and submitting a proposal to project manager for acceptance | Tue 1/7/25 | Mon 14/7/25 | 14 days | | 0 | NA | NA | 0% | | | | | | | | | | | | | | | |
| 53 | Construction of the New Integrated Public Fill Reception Platform | Tue 15/7/25 | Tue 28/10/25 | 106 days | 52 | 0 | NA | NA | 0% | | | | | | | | | | | | | | | |
| 54 | Bituminous Materials paved Roads to the Integrated Public Fill Reception Platform | Tue 1/7/25 | Tue 28/10/25 | 120 days | | | NA | NA | 0% | | | | | | | | | | | | | | | |
| 55 | Preparing and submitting a proposal to project manager for acceptance | Tue 1/7/25 | Mon 14/7/25 | 14 days | | 0 | NA | NA | 0% | | | | | | | | | | | | | | | |
| 56 | Construction of the Bituminous Materials paved Roads to the Integrated Public Fill Reception | Tue 15/7/25 | Tue 28/10/25 | 106 days | 55 | 0 | NA | NA | 0% | | | | | | | | | | | | | | | |
| 57 | Relocation of Dewatering Plant and construction of reinforced concrete slurry receiving tank | Tue 1/7/25 | Sat 27/12/25 | 180 days | | | NA | NA | 0% | | | | | | | | | | | | | | | |
| 58 | Preparing and submitting a proposal to project manager for acceptance | Tue 1/7/25 | Mon 14/7/25 | 14 days | | | NA | NA | 0% | | | | | | | | | | | | | | | |
| 59 | Relocation of the 3 number of existing Dewatering Plant phase by phase | Tue 15/7/25 | Sat 13/12/25 | 152 days | 58 | | NA | NA | 0% | | | | | | | | | | | | | | | |
| 60 | Construction of reinforced concrete slurry receiving tank | Tue 15/7/25 | Sat 13/12/25 | 152 days | 58 | | NA | NA | 0% | | | | | | | | | | | | | | | |

Project: CV/2023/10
Date: 21/02/2025
3 month rolling programme Feb25-Apr25

| | | | | | | | |
|-----------------|--|--------------------|--|-----------------------|--|--------------------|--|
| Task | | External Tasks | | Duration-only | | External Tasks | |
| Split | | External Milestone | | Manual Summary Rollup | | External Milestone | |
| Milestone | | Inactive Milestone | | Manual Summary | | Progress | |
| Summary | | Inactive Summary | | Start-only | | Deadline | |
| Project Summary | | Manual Task | | Finish-only | | | |

| ID | Task Name | Start | Finish | Duration | Predecessors | time risk allowances | Actual Start | Actual Finish | % Complete | Feb '25 | | | | | Mar '25 | | | Apr '25 | | | | | | | | | | |
|-----|---|-------------|-------------|--------------|--------------|----------------------|--------------|---------------|------------|---------|---|----|----|----|---------|----|----|---------|----|---|----|----|----|---|--|--|--|--|
| | | | | | | | | | | 27 | 3 | 10 | 17 | 24 | 3 | 10 | 17 | 24 | 31 | 7 | 14 | 21 | 28 | 5 | | | | |
| 121 | Operation and maintenance of the existing navigation channel and turning basins in association with the existing berthing facility at Zone E of the Designated Reclamation Sites in the Mainland. | Sun 4/8/24 | Sat 31/7/27 | 1092 days | | | Sun 4/8/24 | NA | 14% | | | | | | | | | | | | | | | | | | | |
| 122 | Operation and maintenance of the existing navigation channel and turning basins | Sun 4/8/24 | Sat 31/7/27 | 1092 days | | 0 | Sun 4/8/24 | NA | 14% | | | | | | | | | | | | | | | | | | | |
| 123 | Design, construction, operation and maintenance of the new navigation channel and turning basins in association with the new berthing facility at Zone B of the Designated Reclamation Sites in the Mainland. | Sun 4/8/24 | Sat 31/7/27 | 1092 days | | | Sun 4/8/24 | NA | 18% | | | | | | | | | | | | | | | | | | | |
| 124 | Obtaining the dumping permits from Ministry of Ecology and environment of the People's Republic of China through the Employer for Zone B | Sun 4/8/24 | Sun 4/8/24 | 1 day | | 0 | Sun 4/8/24 | Sun 4/8/24 | 100% | | | | | | | | | | | | | | | | | | | |
| 125 | Design submission of new navigation channel and turning basins and obtaining all necessary design approvals and consents | Mon 5/8/24 | Thu 3/10/24 | 60 days | 124 | 0 | Mon 5/8/24 | Thu 3/10/24 | 100% | | | | | | | | | | | | | | | | | | | |
| 126 | Construction of the new navigation channel | Wed 4/9/24 | Fri 31/1/25 | 150 days | 125SS+30 da2 | | Wed 4/9/24 | NA | 79% | | | | | | | | | | | | | | | | | | | |
| 127 | Construction of the new turning basins | Tue 3/12/24 | Fri 31/1/25 | 60 days | 126SS+90 da1 | | Tue 3/12/24 | NA | 47% | | | | | | | | | | | | | | | | | | | |
| 128 | Obtaining the construction completion certificate of new navigation channel and turning basins | Sat 1/2/25 | Sat 1/2/25 | 1 day | 127 | 0 | NA | NA | 0% | | | | | | | | | | | | | | | | | | | |
| 129 | Operation and maintenance of the new navigation channel and turning basins | Sun 2/2/25 | Sat 31/7/27 | 910 days | 128 | 0 | NA | NA | 0% | | | | | | | | | | | | | | | | | | | |
| 130 | Design, construction, operation and maintenance of new berthing facility at Zone B of the Designated Reclamation Sites in the Mainland. | Sun 4/8/24 | Sat 31/7/27 | 1092 days | | | Sun 4/8/24 | NA | 25% | | | | | | | | | | | | | | | | | | | |
| 131 | Obtaining the dumping permits from Ministry of Ecology and environment of the People's Republic of China through the Employer for Zone B | Sun 4/8/24 | Sun 4/8/24 | 1 day | | | Sun 4/8/24 | Sun 4/8/24 | 100% | | | | | | | | | | | | | | | | | | | |
| 132 | Design submission of new berthing facilities and obtaining all necessary design approvals and consents | Mon 5/8/24 | Thu 3/10/24 | 60 days | 131 | | Mon 5/8/24 | Thu 3/10/24 | 100% | | | | | | | | | | | | | | | | | | | |
| 133 | Precasting cassion units and coping units | Wed 4/9/24 | Mon 2/12/24 | 90 days | 132SS+30 da1 | | Wed 4/9/24 | Mon 2/12... | 100% | | | | | | | | | | | | | | | | | | | |
| 134 | Construction of rubber mound foundation | Fri 4/10/24 | Wed 1/1/25 | 90 days | 132SS+60 da2 | | Fri 4/10/24 | NA | 99% | | | | | | | | | | | | | | | | | | | |
| 135 | Installation of cassion units and coping units | Sun 3/11/24 | Fri 31/1/25 | 90 days | 132SS+90 da2 | | Sun 3/11/24 | NA | 65% | | | | | | | | | | | | | | | | | | | |
| 136 | Backfilling and in-situ concreting | Tue 3/12/24 | Fri 31/1/25 | 60 days | 132SS+120 c2 | | Tue 3/12/24 | NA | 47% | | | | | | | | | | | | | | | | | | | |
| 137 | Installation of rubber fenders and bollards | Thu 2/1/25 | Fri 31/1/25 | 30 days | 132SS+150 c2 | | NA | NA | 0% | | | | | | | | | | | | | | | | | | | |
| 138 | Obtaining the construction completion certificate new berthing facilities | Sat 1/2/25 | Sat 1/2/25 | 1 day | 137 | 0 | NA | NA | 0% | | | | | | | | | | | | | | | | | | | |
| 139 | Operation and maintenance of new berthing facilities | Sun 2/2/25 | Sat 31/7/27 | 910.13 days | 138 | | NA | NA | 0% | | | | | | | | | | | | | | | | | | | |
| 140 | Design and construction of seawalls (approximate 4,400m) in association with new berthing facility at Zone B of the Designated Reclamation Sites in the Mainland. | Sun 4/8/24 | Sat 31/7/27 | 1092.13 days | | | Sun 4/8/24 | NA | 14% | | | | | | | | | | | | | | | | | | | |
| 141 | Obtaining the permits from Ministry of Ecology and environment of the People's Republic of China through the Employer for Zone B | Sun 4/8/24 | Sun 4/8/24 | 1 day | | 0 | Sun 4/8/24 | Sun 4/8/24 | 100% | | | | | | | | | | | | | | | | | | | |
| 142 | Design submission of seawalls and obtaining all necessary design approvals and consents | Mon 5/8/24 | Tue 3/9/24 | 30 days | 141 | 0 | Mon 5/8/24 | Tue 3/9/24 | 100% | | | | | | | | | | | | | | | | | | | |
| 143 | Construction of seawalls (approx. 4400m) | Wed 4/9/24 | Fri 30/7/27 | 1060 days | 142 | 2 | Wed 4/9/24 | NA | 11% | | | | | | | | | | | | | | | | | | | |
| 144 | Obtaining the construction completion certificate of seawalls | Sat 31/7/27 | Sat 31/7/27 | 1 day | 143 | 0 | NA | NA | 0% | | | | | | | | | | | | | | | | | | | |
| 145 | Planned Completion Date (Section 3) | Sat 31/7/27 | Sat 31/7/27 | 1 day | | | Sat 31/7/27 | NA | 0% | | | | | | | | | | | | | | | | | | | |

Project: CV/2023/10
Date: 21/02/2025
3 month rolling programme Feb25-Apr25

| | | | | | | | |
|-----------------|--|--------------------|--|-----------------------|--|--------------------|--|
| Task | | External Tasks | | Duration-only | | External Tasks | |
| Split | | External Milestone | | Manual Summary Rollup | | External Milestone | |
| Milestone | | Inactive Milestone | | Manual Summary | | Progress | |
| Summary | | Inactive Summary | | Start-only | | Deadline | |
| Project Summary | | Manual Task | | Finish-only | | | |

| ID | Task Name | Start | Finish | Duration | Predecessor | time risk allowa | Actual Start | Actual Finish | % Complete | May 2025 | | | | | | | June 2025 | | | | | | | July 2025 | | | | | | | | |
|----|--|-------------|-------------|-----------|-------------|------------------|--------------|---------------|------------|----------|---|---|---|----|----|----|-----------|----|----|----|---|---|---|-----------|----|----|----|----|----|----|---|---|
| | | | | | | | | | | 29 | 2 | 5 | 8 | 11 | 14 | 17 | 20 | 23 | 26 | 29 | 1 | 4 | 7 | 10 | 13 | 16 | 19 | 22 | 25 | 28 | 1 | 4 |
| 1 | Contract duration of Contract CV/2023/10 | Sun 4/8/24 | Sat 31/7/27 | 1092 days | | | Sun 4/8/24 | NA | 25% | | | | | | | | | | | | | | | | | | | | | | | |
| 2 | Contract date, Date of Letter of Acceptance | Thu 11/7/24 | Thu 11/7/24 | 1 day | | | Thu 11/7/24 | Thu 11/7/24 | 100% | | | | | | | | | | | | | | | | | | | | | | | |
| 3 | Starting Date of the Works | Sun 4/8/24 | Sun 4/8/24 | 1 day | | | Sun 4/8/24 | Sun 4/8/24 | 100% | | | | | | | | | | | | | | | | | | | | | | | |
| 4 | Starting Date of Section 1 of the Works | Sun 4/8/24 | Sun 4/8/24 | 1 day | | | Sun 4/8/24 | Sun 4/8/24 | 100% | | | | | | | | | | | | | | | | | | | | | | | |
| 5 | Starting Date of Section 2 of the Works | Sun 4/8/24 | Sun 4/8/24 | 1 day | | | Sun 4/8/24 | Sun 4/8/24 | 100% | | | | | | | | | | | | | | | | | | | | | | | |
| 6 | Starting Date of Section 3 of the Works | Sun 4/8/24 | Sun 4/8/24 | 1 day | | | Sun 4/8/24 | Sun 4/8/24 | 100% | | | | | | | | | | | | | | | | | | | | | | | |
| 7 | Date for Completion of the Works | Sat 31/7/27 | Sat 31/7/27 | 1 day | | | Sat 31/7/27 | NA | 0% | | | | | | | | | | | | | | | | | | | | | | | |
| 8 | Completion Date of Section 1 of the Works | Sat 31/7/27 | Sat 31/7/27 | 1 day | 4SF+1092 da | | Sat 31/7/27 | NA | 0% | | | | | | | | | | | | | | | | | | | | | | | |
| 9 | Completion Date of Section 2 of the Works | Sat 31/7/27 | Sat 31/7/27 | 1 day | 5SF+1092 da | | Sat 31/7/27 | NA | 0% | | | | | | | | | | | | | | | | | | | | | | | |
| 10 | Completion Date of Section 3 of the Works | Sat 31/7/27 | Sat 31/7/27 | 1 day | 6SF+1092 da | | Sat 31/7/27 | NA | 0% | | | | | | | | | | | | | | | | | | | | | | | |
| 11 | Planned completion dates | Sat 31/7/27 | Sat 31/7/27 | 1 day | | | Sat 31/7/27 | NA | 0% | | | | | | | | | | | | | | | | | | | | | | | |
| 12 | Planned completion date of Section 1 | Sat 31/7/27 | Sat 31/7/27 | 1 day | | | Sat 31/7/27 | NA | 0% | | | | | | | | | | | | | | | | | | | | | | | |
| 13 | Planned completion date of Section 2 | Sat 31/7/27 | Sat 31/7/27 | 1 day | | | Sat 31/7/27 | NA | 0% | | | | | | | | | | | | | | | | | | | | | | | |
| 14 | Planned completion date of Section 3 | Sat 31/7/27 | Sat 31/7/27 | 1 day | | | Sat 31/7/27 | NA | 0% | | | | | | | | | | | | | | | | | | | | | | | |
| 15 | Access Date of the Site | Sun 4/8/24 | Sun 4/8/24 | 1 day | | | Sun 4/8/24 | Sun 4/8/24 | 100% | | | | | | | | | | | | | | | | | | | | | | | |
| 16 | Portion A2, A3a, A3b, A3c, A4a1, A4a2, A4b1, A4b2, A5a, A5b, A5c, A7a, A7b, A7c and A10 (within 60 days after starting date or later date notified by the Project Manager with 2 days advance notice) | Sun 4/8/24 | Sun 4/8/24 | 1 day | | | Sun 4/8/24 | Sun 4/8/24 | 100% | | | | | | | | | | | | | | | | | | | | | | | |
| 17 | Portion B1, B3, B6a, B6b ,B7 and C (within 60 days after starting date or later date notified by the Project Manager with 2 days advance notice) | Sun 4/8/24 | Sun 4/8/24 | 1 day | | | Sun 4/8/24 | Sun 4/8/24 | 100% | | | | | | | | | | | | | | | | | | | | | | | |
| 18 | Portion A1, A9, A9a and B6c (7 day's advance notice after starting date) | Sun 4/8/24 | Sun 4/8/24 | 1 day | | | Sun 4/8/24 | Sun 4/8/24 | 100% | | | | | | | | | | | | | | | | | | | | | | | |
| 19 | Hand back of the Site | Sat 31/7/27 | Sat 31/7/27 | 1 day | | | Sat 31/7/27 | NA | 0% | | | | | | | | | | | | | | | | | | | | | | | |
| 20 | Portion A2, A3a, A3b, A3c, A4a1, A4a2, A4b1, A4b2 ,A5a, A5b, A5c, ,A7a, A7b, A7c and A10 of the site on the completion date of the section 1 of the works (or at an earlier date notified by the Project Manager with 30 days' advance notice) | Sat 31/7/27 | Sat 31/7/27 | 1 day | | | Sat 31/7/27 | NA | 0% | | | | | | | | | | | | | | | | | | | | | | | |
| 21 | Portion A1, A9 and A9a of the site if the Contractor has accessed to them ,on the completion date of the section 1 of the works (or at an earlier date as notified by the Project Manager with 30 days' advance notice) | Sat 31/7/27 | Sat 31/7/27 | 1 day | | | Sat 31/7/27 | NA | 0% | | | | | | | | | | | | | | | | | | | | | | | |
| 22 | Portion B1, B3, B6a, B6b, B7 and C of the site on the completion date of the section 2 of the works (or at an earlier date as notified by the Project Manager with 30 days' advance notice) | Sat 31/7/27 | Sat 31/7/27 | 1 day | | | Sat 31/7/27 | NA | 0% | | | | | | | | | | | | | | | | | | | | | | | |
| 23 | Portion B6c of the site if the Contractor has accessed to them ,on the completion date of the section 2 of the works (or at an earlier date as notified by the Project Manager with 30 days' advance notice) | Sat 31/7/27 | Sat 31/7/27 | 1 day | | | Sat 31/7/27 | NA | 0% | | | | | | | | | | | | | | | | | | | | | | | |
| 24 | Portions C of the Site on the completion date of the section 2 of the works (or at an earlier date as notified by the Project Manager with 30 days' advance notice) | Sat 31/7/27 | Sat 31/7/27 | 1 day | | | Sat 31/7/27 | NA | 0% | | | | | | | | | | | | | | | | | | | | | | | |
| 25 | Section 1 of the Works - Tseung Kwan O Area 137 Fill Bank | Sun 4/8/24 | Sat 31/7/27 | 1092 days | 4SS | | Sun 4/8/24 | NA | 19% | | | | | | | | | | | | | | | | | | | | | | | |
| 26 | Taking over the existing facilities at the Tseung Kwan O Area 137 Fill Bank within Portion A of the Site | Sun 4/8/24 | Sun 4/8/24 | 1 day | 4SS | 0 | Sun 4/8/24 | Sun 4/8/24 | 100% | | | | | | | | | | | | | | | | | | | | | | | |
| 27 | Operation of the Tseung Kwan O Area 137 Fill Bank within Portion A of the Site | Sun 4/8/24 | Sat 31/7/27 | 1092 days | 26SS | 0 | Sun 4/8/24 | NA | 25% | | | | | | | | | | | | | | | | | | | | | | | |
| 28 | Operation and maintenance of the surveillance system within Portion A of the Site | Sun 4/8/24 | Sat 31/7/27 | 1092 days | 26SS | 0 | Sun 4/8/24 | NA | 25% | | | | | | | | | | | | | | | | | | | | | | | |
| 29 | Operation and maintenance of the existing tipping halls at the Tseung Kwan O Area 137 Fill Bank within Portion A of the Site | Sun 4/8/24 | Sat 31/7/27 | 1092 days | 26SS | 0 | Sun 4/8/24 | NA | 25% | | | | | | | | | | | | | | | | | | | | | | | |

Project: 3 month rolling Programme CV/2023/10
May to July

| | | | | | | | |
|-----------------|--|--------------------|--|-----------------------|--|--------------------|--|
| Task | | External Tasks | | Duration-only | | External Tasks | |
| Split | | External Milestone | | Manual Summary Rollup | | External Milestone | |
| Milestone | | Inactive Milestone | | Manual Summary | | Progress | |
| Summary | | Inactive Summary | | Start-only | | Deadline | |
| Project Summary | | Manual Task | | Finish-only | | | |

| ID | Task Name | Start | Finish | Duration | Predecessor | time risk allowa | Actual Start | Actual Finish | % Complete | Gantt Chart | | | | | | | | | | | | | | | | | | | | | | | | | | | | | | |
|----|--|--------------|--------------|-----------|-------------|------------------|--------------|---------------|------------|---------------------------------------|-----------|-----------|--|--|--|--|--|--|--|--|--|--|--|--|--|--|--|--|--|--|--|--|--|--|--|--|--|--|--|--|
| | | | | | | | | | | May 2025 | June 2025 | July 2025 | | | | | | | | | | | | | | | | | | | | | | | | | | | | |
| 30 | Provision, operation and maintenance of the Crushing Plant at the Tseung Kwan O Area 137 Fill Bank within Portion A of the Site | Sun 4/8/24 | Sat 31/7/27 | 1092 days | 26SS | 0 | Sun 4/8/24 | NA | 25% | [Gantt bar from 1/5/25 to 31/7/25] | | | | | | | | | | | | | | | | | | | | | | | | | | | | | | |
| 31 | Operation and maintenance of the dewatering plant at the Tseung Kwan O Area 137 Fill Bank within portion A of the Site Facility to the Tseung Kwan O Area 137 Fill Bank within Portion A of the Site. | Sun 4/8/24 | Sat 31/7/27 | 1092 days | 26SS | 0 | Sun 4/8/24 | NA | 25% | [Gantt bar from 1/5/25 to 31/7/25] | | | | | | | | | | | | | | | | | | | | | | | | | | | | | | |
| 32 | Design, construction, operation and maintenance of 3 nos. new tipping halls with access ramp, new barge handling area, and associated seawalls within Portion A of the Site as and when instructed by the Project Manager. | Wed 1/7/26 | Sat 31/7/27 | 396 days | 26SS | | NA | NA | 0% | [Gantt bar from 1/7/26 to 31/7/27] | | | | | | | | | | | | | | | | | | | | | | | | | | | | | | |
| 33 | Submission of design proposals to Project Manager for acceptance | Wed 1/7/26 | Wed 28/10/26 | 120 days | | 0 | NA | NA | 0% | [Gantt bar from 1/7/26 to 28/10/26] | | | | | | | | | | | | | | | | | | | | | | | | | | | | | | |
| 34 | Construction new tipping halls with access ramp, new barge handling area, and associated seawalls within Portion A of the Site | Thu 29/10/26 | Fri 25/6/27 | 240 days | 33 | 0 | NA | NA | 0% | [Gantt bar from 29/10/26 to 25/6/27] | | | | | | | | | | | | | | | | | | | | | | | | | | | | | | |
| 35 | Operation and maintenance the new berthing facilities | Sat 26/6/27 | Sat 31/7/27 | 36 days | 34 | | NA | NA | 0% | [Gantt bar from 26/6/27 to 31/7/27] | | | | | | | | | | | | | | | | | | | | | | | | | | | | | | |
| 36 | Demolition & reconstruction/relocation of existing facilities within Portion A of the Site above as and when instructed by the Project Manager | Tue 1/7/25 | Sat 27/12/25 | 180 days | 26SS | | NA | NA | 0% | [Gantt bar from 1/7/25 to 27/12/25] | | | | | | | | | | | | | | | | | | | | | | | | | | | | | | |
| 37 | Project Manager's Principal Site Office and Secondary Site Office, and Temporary Accommodation for the Contractor | Tue 1/7/25 | Sun 28/9/25 | 90 days | | | NA | NA | 0% | [Gantt bar from 1/7/25 to 28/9/25] | | | | | | | | | | | | | | | | | | | | | | | | | | | | | | |
| 38 | Preparing and submitting a proposal for project manager for acceptance | Tue 1/7/25 | Mon 14/7/25 | 14 days | | 1 | NA | NA | 0% | [Gantt bar from 1/7/25 to 14/7/25] | | | | | | | | | | | | | | | | | | | | | | | | | | | | | | |
| 39 | Construct a new Project Manager's Secondary Site Office | Tue 15/7/25 | Sun 14/9/25 | 62 days | 38 | 0 | NA | NA | 0% | [Gantt bar from 15/7/25 to 14/9/25] | | | | | | | | | | | | | | | | | | | | | | | | | | | | | | |
| 40 | Relocate furniture, office equipment and computer facilities previously installed at the existing Project Manager's Site Office to the new office | Mon 15/9/25 | Sun 28/9/25 | 14 days | 39 | 0 | NA | NA | 0% | [Gantt bar from 15/9/25 to 28/9/25] | | | | | | | | | | | | | | | | | | | | | | | | | | | | | | |
| 41 | Dismantle and re-assemble the existing Project Manager's Principal Site Office to a new location | Tue 15/7/25 | Sun 21/9/25 | 69 days | 38 | 0 | NA | NA | 0% | [Gantt bar from 15/7/25 to 21/9/25] | | | | | | | | | | | | | | | | | | | | | | | | | | | | | | |
| 42 | Demolish the existing Secondary Site Office. | Mon 22/9/25 | Sun 28/9/25 | 7 days | 41 | 0 | NA | NA | 0% | [Gantt bar from 22/9/25 to 28/9/25] | | | | | | | | | | | | | | | | | | | | | | | | | | | | | | |
| 43 | Construction of Temporary Accommodation for the Contractor | Tue 15/7/25 | Sun 28/9/25 | 76 days | 38 | 1 | NA | NA | 0% | [Gantt bar from 15/7/25 to 28/9/25] | | | | | | | | | | | | | | | | | | | | | | | | | | | | | | |
| 44 | New Combined Reception and Exit Offices | Tue 1/7/25 | Tue 28/10/25 | 120 days | | | NA | NA | 0% | [Gantt bar from 1/7/25 to 28/10/25] | | | | | | | | | | | | | | | | | | | | | | | | | | | | | | |
| 45 | Preparing and submitting a proposal to project manager for acceptance | Tue 1/7/25 | Mon 14/7/25 | 14 days | | 0 | NA | NA | 0% | [Gantt bar from 1/7/25 to 14/7/25] | | | | | | | | | | | | | | | | | | | | | | | | | | | | | | |
| 46 | Construction of the new Combined Reception and Exit Offices and new weighbridges | Tue 15/7/25 | Sat 18/10/25 | 96 days | 45 | 0 | NA | NA | 0% | [Gantt bar from 15/7/25 to 18/10/25] | | | | | | | | | | | | | | | | | | | | | | | | | | | | | | |
| 47 | Relocate the existing CWDCMIS to the new CREO office | Sun 19/10/25 | Tue 28/10/25 | 10 days | 46 | 0 | NA | NA | 0% | [Gantt bar from 19/10/25 to 28/10/25] | | | | | | | | | | | | | | | | | | | | | | | | | | | | | | |
| 48 | Construction Concrete Paved Roads to the new Combined Reception and Exit | Tue 1/7/25 | Tue 28/10/25 | 120 days | | | NA | NA | 0% | [Gantt bar from 1/7/25 to 28/10/25] | | | | | | | | | | | | | | | | | | | | | | | | | | | | | | |
| 49 | Preparing and submitting a proposal to project manager for acceptance | Tue 1/7/25 | Mon 14/7/25 | 14 days | | 0 | NA | NA | 0% | [Gantt bar from 1/7/25 to 14/7/25] | | | | | | | | | | | | | | | | | | | | | | | | | | | | | | |
| 50 | Construction of the concrete pave roads | Tue 15/7/25 | Tue 28/10/25 | 106 days | 49 | 0 | NA | NA | 0% | [Gantt bar from 15/7/25 to 28/10/25] | | | | | | | | | | | | | | | | | | | | | | | | | | | | | | |
| 51 | Transportation of Soil | Tue 1/7/25 | Sun 28/9/25 | 90 days | | | NA | NA | 0% | [Gantt bar from 1/7/25 to 28/9/25] | | | | | | | | | | | | | | | | | | | | | | | | | | | | | | |
| 52 | New Integrated Public Fill Reception Platform | Mon 29/9/25 | Mon 26/1/26 | 120 days | 51 | | NA | NA | 0% | [Gantt bar from 29/9/25 to 26/1/26] | | | | | | | | | | | | | | | | | | | | | | | | | | | | | | |
| 53 | Preparing and submitting a proposal to project manager for acceptance | Mon 29/9/25 | Sun 12/10/25 | 14 days | | 0 | NA | NA | 0% | [Gantt bar from 29/9/25 to 12/10/25] | | | | | | | | | | | | | | | | | | | | | | | | | | | | | | |
| 54 | Construction of the New Integrated Public Fill Reception Platform | Mon 13/10/25 | Mon 26/1/26 | 106 days | 53 | 0 | NA | NA | 0% | [Gantt bar from 13/10/25 to 26/1/26] | | | | | | | | | | | | | | | | | | | | | | | | | | | | | | |
| 55 | Bituminous Materials paved Roads to the Integrated Public Fill Reception Platform | Mon 29/9/25 | Mon 26/1/26 | 120 days | 51 | | NA | NA | 0% | [Gantt bar from 29/9/25 to 26/1/26] | | | | | | | | | | | | | | | | | | | | | | | | | | | | | | |
| 56 | Preparing and submitting a proposal to project manager for acceptance | Mon 29/9/25 | Sun 12/10/25 | 14 days | | 0 | NA | NA | 0% | [Gantt bar from 29/9/25 to 12/10/25] | | | | | | | | | | | | | | | | | | | | | | | | | | | | | | |
| 57 | Construction of the Bituminous Materials paved Roads to the Integrated Public Fill Reception | Mon 13/10/25 | Mon 26/1/26 | 106 days | 56,51 | 0 | NA | NA | 0% | [Gantt bar from 13/10/25 to 26/1/26] | | | | | | | | | | | | | | | | | | | | | | | | | | | | | | |
| 58 | Relocation of Dewatering Plant and construction of reinforced concrete slurry receiving tank | Tue 1/7/25 | Sat 27/12/25 | 180 days | | | NA | NA | 0% | [Gantt bar from 1/7/25 to 27/12/25] | | | | | | | | | | | | | | | | | | | | | | | | | | | | | | |

Project: 3 month rolling Programme CV/2023/10
May to July

| | | | | | | | | |
|-----------------|--|--------------------|--|-----------------------|--|--------------------|--|--------------------|
| Task | | External Tasks | | Duration-only | | External Tasks | | External Milestone |
| Split | | External Milestone | | Manual Summary Rollup | | External Milestone | | Progress |
| Milestone | | Inactive Milestone | | Manual Summary | | Progress | | Deadline |
| Summary | | Inactive Summary | | Start-only | | Deadline | | |
| Project Summary | | Manual Task | | Finish-only | | | | |

| ID | Task Name | Start | Finish | Duration | Predecessor | time risk allowa | Actual Start | Actual Finish | % Complete | Gantt Chart (May 2025, June 2025, July 2025) | | | | | | | | | | | | | | | | | | | | | | | | | | | |
|----|---|-------------------|--------------------|------------------|-------------|------------------|--------------------|---------------|------------|--|--|--|--|--|--|--|--|--|--|--|--|--|--|--|--|--|--|--|--|--|--|--|--|--|--|--|--|
| 59 | Preparing and submitting a proposal to project manager for acceptance | Tue 1/7/25 | Mon 14/7/25 | 14 days | | | NA | NA | 0% | [Gantt bar from 1/7/25 to 14/7/25] | | | | | | | | | | | | | | | | | | | | | | | | | | | |
| 60 | Relocation of the 3 number of existing Dewatering Plant phase by phase | Tue 15/7/25 | Sat 13/12/25 | 152 days | 59 | | NA | NA | 0% | [Gantt bar from 15/7/25 to 13/12/25] | | | | | | | | | | | | | | | | | | | | | | | | | | | |
| 61 | Construction of reinforced concrete slurry receiving tank | Tue 15/7/25 | Sat 13/12/25 | 152 days | 59 | | NA | NA | 0% | [Gantt bar from 15/7/25 to 13/12/25] | | | | | | | | | | | | | | | | | | | | | | | | | | | |
| 62 | Demolish the existing structures at the Dewatering Plant | Sun 14/12/25 | Sat 27/12/25 | 14 days | 60 | | NA | NA | 0% | [Gantt bar from 14/12/25 to 27/12/25] | | | | | | | | | | | | | | | | | | | | | | | | | | | |
| 63 | Construction ,Relocation and demolition of Wash House | Tue 1/7/25 | Tue 28/10/25 | 120 days | | | NA | NA | 0% | [Gantt bar from 1/7/25 to 28/10/25] | | | | | | | | | | | | | | | | | | | | | | | | | | | |
| 64 | Preparing and submitting a proposal to project manager for acceptance | Tue 1/7/25 | Mon 14/7/25 | 14 days | | | NA | NA | 0% | [Gantt bar from 1/7/25 to 14/7/25] | | | | | | | | | | | | | | | | | | | | | | | | | | | |
| 65 | Construction of a new wash house | Tue 15/7/25 | Tue 21/10/25 | 99 days | 64 | | NA | NA | 0% | [Gantt bar from 15/7/25 to 21/10/25] | | | | | | | | | | | | | | | | | | | | | | | | | | | |
| 66 | Demolish the existing Wash House A1 | Tue 21/10/25 | Mon 27/10/25 | 7 days | 65 | | NA | NA | 0% | [Gantt bar from 21/10/25 to 27/10/25] | | | | | | | | | | | | | | | | | | | | | | | | | | | |
| 67 | Relocate the existing Wash House A2 and Wash House A3 to new location | Tue 15/7/25 | Tue 28/10/25 | 106 days | 64 | | NA | NA | 0% | [Gantt bar from 15/7/25 to 28/10/25] | | | | | | | | | | | | | | | | | | | | | | | | | | | |
| 68 | Wheel Washing Bays | Tue 1/7/25 | Tue 28/10/25 | 120 days | | | NA | NA | 0% | [Gantt bar from 1/7/25 to 28/10/25] | | | | | | | | | | | | | | | | | | | | | | | | | | | |
| 69 | Preparing and submitting a proposal to project manager for acceptance | Tue 1/7/25 | Mon 14/7/25 | 14 days | | | NA | NA | 0% | [Gantt bar from 1/7/25 to 14/7/25] | | | | | | | | | | | | | | | | | | | | | | | | | | | |
| 70 | Construction of 2 nos of Wheel Washing Bays | Tue 15/7/25 | Tue 21/10/25 | 99 days | 69 | | NA | NA | 0% | [Gantt bar from 15/7/25 to 21/10/25] | | | | | | | | | | | | | | | | | | | | | | | | | | | |
| 71 | Demolish the existing wash bays | Wed 22/10/25 | Tue 28/10/25 | 7 days | 70 | | NA | NA | 0% | [Gantt bar from 22/10/25 to 28/10/25] | | | | | | | | | | | | | | | | | | | | | | | | | | | |
| 72 | Construction of new Recorder Houses | Tue 1/7/25 | Tue 28/10/25 | 120 days | | | NA | NA | 0% | [Gantt bar from 1/7/25 to 28/10/25] | | | | | | | | | | | | | | | | | | | | | | | | | | | |
| 73 | Preparing and submitting a proposal to project manager for acceptance | Tue 1/7/25 | Mon 14/7/25 | 14 days | | | NA | NA | 0% | [Gantt bar from 1/7/25 to 14/7/25] | | | | | | | | | | | | | | | | | | | | | | | | | | | |
| 74 | Construction of two new Recorder Houses | Tue 15/7/25 | Tue 21/10/25 | 99 days | 73 | | NA | NA | 0% | [Gantt bar from 15/7/25 to 21/10/25] | | | | | | | | | | | | | | | | | | | | | | | | | | | |
| 75 | Demolition of two existing recorder houses A1 and A4 | Wed 22/10/25 | Tue 28/10/25 | 7 days | 74 | | NA | NA | 0% | [Gantt bar from 22/10/25 to 28/10/25] | | | | | | | | | | | | | | | | | | | | | | | | | | | |
| 76 | Collection and delivery of Public Fill by barges from the Chai Wan and Mui Wo Barging Points to the TKO Area 137 Fill Bank within Portion A of the Site | Sun 4/8/24 | Sat 31/7/27 | 1092 days | 26SS | | Sun 4/8/24 | NA | 25% | [Gantt bar from 4/8/24 to 31/7/27] | | | | | | | | | | | | | | | | | | | | | | | | | | | |
| 77 | Handing over the facilities at the Tseung Kwan O Area 137 Fill Bank within Portion A of the Site to the Client. | Sat 31/7/27 | Sat 31/7/27 | 1 day | | | NA | NA | 0% | [Gantt bar from 31/7/27 to 31/7/27] | | | | | | | | | | | | | | | | | | | | | | | | | | | |
| 78 | Planned Completion Date (Section 1) | Sat 31/7/27 | Sat 31/7/27 | 1 day | | | Sat 31/7/27 | NA | 0% | [Gantt bar from 31/7/27 to 31/7/27] | | | | | | | | | | | | | | | | | | | | | | | | | | | |
| 79 | Section 2 of the Works - Tuen Mun Area 38 Fill Bank | Sun 4/8/24 | Sat 31/7/27 | 1092 days | | | Sun 4/8/24 | NA | 25% | [Gantt bar from 4/8/24 to 31/7/27] | | | | | | | | | | | | | | | | | | | | | | | | | | | |
| 80 | Taking over the existing facilities at the Tuen Mun Area 38 Fill Bank within Portion B of the Site | Sun 4/8/24 | Sun 4/8/24 | 1 day | | 0 | Sun 4/8/24 | Sun 4/8/24 | 100% | [Gantt bar from 4/8/24 to 4/8/24] | | | | | | | | | | | | | | | | | | | | | | | | | | | |
| 81 | Operation of the Tuen Mun Area 38 Fill Bank within Portion B of the Site | Sun 4/8/24 | Sat 31/7/27 | 1092 days | | 0 | Sun 4/8/24 | NA | 25% | [Gantt bar from 4/8/24 to 31/7/27] | | | | | | | | | | | | | | | | | | | | | | | | | | | |
| 82 | Operation and maintenance of the surveillance system within Portion B of the Site | Sun 4/8/24 | Sat 31/7/27 | 1092 days | | 0 | Sun 4/8/24 | NA | 25% | [Gantt bar from 4/8/24 to 31/7/27] | | | | | | | | | | | | | | | | | | | | | | | | | | | |
| 83 | Operation and maintenance of the existing tipping halls at the Tuen Mun Area 38 Fill Bank within Portion B of the Site | Sun 4/8/24 | Sat 31/7/27 | 1092 days | | 0 | Sun 4/8/24 | NA | 25% | [Gantt bar from 4/8/24 to 31/7/27] | | | | | | | | | | | | | | | | | | | | | | | | | | | |
| 84 | Operation and Maintenance of the Crushing Plant at the Tuen Mun Area 38 Fill Bank within Portion B of the Site | Sun 4/8/24 | Sat 31/7/27 | 1092 days | | 0 | Sun 4/8/24 | NA | 25% | [Gantt bar from 4/8/24 to 31/7/27] | | | | | | | | | | | | | | | | | | | | | | | | | | | |
| 85 | Operation and maintenance of glass cullet storage compartment at the Tuen Mun Area 38 Fill Bank within Portion B of the Site | Sun 4/8/24 | Sat 31/7/27 | 1092 days | | 0 | Sun 4/8/24 | NA | 25% | [Gantt bar from 4/8/24 to 31/7/27] | | | | | | | | | | | | | | | | | | | | | | | | | | | |
| 86 | Collection of fill materials delivered by Others vide marine transportation through the berthing facility within the site at Tsang Tsui and disposal of the fill materials collected to areas within the Site at Tsang Tsui as agreed by the Project Manager. | Sun 4/8/24 | Sat 31/7/27 | 1092 days | | 0 | Sun 4/8/24 | NA | 25% | [Gantt bar from 4/8/24 to 31/7/27] | | | | | | | | | | | | | | | | | | | | | | | | | | | |
| 87 | Handing over the facilities at the Tuen Mun Area 38 Fill Bank within Portion B of the Site and at Tsang Tsui within Portion C of the Site to the Client. | Sat 31/7/27 | Sat 31/7/27 | 1 day | | 0 | NA | NA | 0% | [Gantt bar from 31/7/27 to 31/7/27] | | | | | | | | | | | | | | | | | | | | | | | | | | | |
| 88 | Planned Completion Date (Section 2) | Sat 31/7/27 | Sat 31/7/27 | 1 day | | | Sat 31/7/27 | NA | 0% | [Gantt bar from 31/7/27 to 31/7/27] | | | | | | | | | | | | | | | | | | | | | | | | | | | |
| 89 | Section 3 of the Works - Designated Reclamation Sites in the Mainland | Sun 4/8/24 | Sat 31/7/27 | 1092 days | | | Thu 11/7/24 | NA | 29% | [Gantt bar from 4/8/24 to 31/7/27] | | | | | | | | | | | | | | | | | | | | | | | | | | | |

Project: 3 month rolling Programme CV/2023/10
May to July

| | | | | | | | |
|-----------------|--|--------------------|--|-----------------------|--|--------------------|--|
| Task | | External Tasks | | Duration-only | | External Tasks | |
| Split | | External Milestone | | Manual Summary Rollup | | External Milestone | |
| Milestone | | Inactive Milestone | | Manual Summary | | Progress | |
| Summary | | Inactive Summary | | Start-only | | Deadline | |
| Project Summary | | Manual Task | | Finish-only | | | |

| ID | Task Name | Start | Finish | Duration | Predecessor | time risk allowa | Actual Start | Actual Finish | % Complete | Gantt Chart | | | | | | | | | | | | | | | | | | | | | | | | | | | | | | |
|-----|--|--------------|--------------|-----------|-------------|------------------|--------------|---------------|------------|---------------------------|-----------|-----------|--|--|--|--|--|--|--|--|--|--|--|--|--|--|--|--|--|--|--|--|--|--|--|--|--|--|--|--|
| | | | | | | | | | | May 2025 | June 2025 | July 2025 | | | | | | | | | | | | | | | | | | | | | | | | | | | | |
| 90 | Collection and delivery of 34 million tonnes of Public Fill by vessels from the Tseung Kwan O Area 137 Fill Bank and the Tuen Mun Area 38 Fill Bank to the Designated Reclamation Sites in the Mainland. | Sun 4/8/24 | Sat 31/7/27 | 1092 days | | | Thu 11/7/24 | NA | 28% | [Gantt bars for task 90] | | | | | | | | | | | | | | | | | | | | | | | | | | | | | | |
| 91 | Deliver of public fill to mainland in year 2024 | Sun 4/8/24 | Tue 31/12/24 | 150 days | | | Thu 11/7/24 | Tue 31/12/24 | 100% | [Gantt bars for task 91] | | | | | | | | | | | | | | | | | | | | | | | | | | | | | | |
| 92 | Installing and arranging Front End Mobile Unit (FEMU) onto the proposed vessels | Thu 11/7/24 | Sat 3/8/24 | 24 days | | 0 | Thu 11/7/24 | Sat 3/8/24 | 100% | [Gantt bars for task 92] | | | | | | | | | | | | | | | | | | | | | | | | | | | | | | |
| 93 | Submitting application documents to EPD for application of dumping permits | Thu 1/8/24 | Thu 1/8/24 | 1 day | | | Thu 1/8/24 | Thu 1/8/24 | 100% | [Gantt bars for task 93] | | | | | | | | | | | | | | | | | | | | | | | | | | | | | | |
| 94 | Obtaining the dumping permit from EPD (assumed on 30/09/2024) | Fri 2/8/24 | Sat 3/8/24 | 2 days | 93 | 0 | Fri 2/8/24 | Sat 3/8/24 | 100% | [Gantt bars for task 94] | | | | | | | | | | | | | | | | | | | | | | | | | | | | | | |
| 95 | Submitting application documents to the Employer for the application of the dumping permit of waste at the sea | Thu 1/8/24 | Thu 1/8/24 | 1 day | | | Thu 1/8/24 | Thu 1/8/24 | 100% | [Gantt bars for task 95] | | | | | | | | | | | | | | | | | | | | | | | | | | | | | | |
| 96 | Obtaining the dumping permits from Ministry of Ecology and Environment of the People's Republic of China through the Employer (assumed on 30/09/2024) | Fri 2/8/24 | Sat 3/8/24 | 2 days | 95 | 0 | Fri 2/8/24 | Sat 3/8/24 | 100% | [Gantt bars for task 96] | | | | | | | | | | | | | | | | | | | | | | | | | | | | | | |
| 97 | Obtaining all necessary permits, licenses, approvals and consents | Thu 1/8/24 | Sat 3/8/24 | 3 days | | 0 | Thu 1/8/24 | Sat 3/8/24 | 100% | [Gantt bars for task 97] | | | | | | | | | | | | | | | | | | | | | | | | | | | | | | |
| 98 | Collection and delivery of 5,000,000 tonnes of Public Fill | Sun 4/8/24 | Tue 31/12/24 | 150 days | 94,96,97 | 2 | Sun 4/8/24 | Tue 31/12/24 | 100% | [Gantt bars for task 98] | | | | | | | | | | | | | | | | | | | | | | | | | | | | | | |
| 99 | Deliver of public fill to mainland in year 2025 | Wed 1/1/25 | Wed 31/12/25 | 365 days | | | Wed 20/11/24 | NA | 43% | [Gantt bars for task 99] | | | | | | | | | | | | | | | | | | | | | | | | | | | | | | |
| 100 | Submitting application documents to EPD for application of dumping permits | Wed 18/12/24 | Wed 18/12/24 | 1 day | | | Wed 18/12/24 | Wed 18/12/24 | 100% | [Gantt bars for task 100] | | | | | | | | | | | | | | | | | | | | | | | | | | | | | | |
| 101 | Obtaining the dumping permit from EPD (assumed on 31/12/24) | Thu 19/12/24 | Tue 31/12/24 | 13 days | 100 | 0 | Thu 19/12/24 | Tue 31/12/24 | 100% | [Gantt bars for task 101] | | | | | | | | | | | | | | | | | | | | | | | | | | | | | | |
| 102 | Submitting application documents to the Employer for the application of the dumping permit of waste at the sea | Wed 20/11/24 | Wed 20/11/24 | 1 day | | | Wed 20/11/24 | Wed 20/11/24 | 100% | [Gantt bars for task 102] | | | | | | | | | | | | | | | | | | | | | | | | | | | | | | |
| 103 | Obtaining the dumping permits from Ministry of Ecology and Environment of the People's Republic of China through the Employer (assumed on 30/09/2024) | Thu 21/11/24 | Tue 31/12/24 | 41 days | 102 | 0 | Thu 21/11/24 | Tue 31/12/24 | 100% | [Gantt bars for task 103] | | | | | | | | | | | | | | | | | | | | | | | | | | | | | | |
| 104 | Obtaining all necessary permits, licenses, approvals and consents | Sat 21/12/24 | Tue 31/12/24 | 11 days | | 0 | Sat 21/12/24 | Tue 31/12/24 | 100% | [Gantt bars for task 104] | | | | | | | | | | | | | | | | | | | | | | | | | | | | | | |
| 105 | Collection and delivery of 11,400,000 tonnes of Public Fill | Wed 1/1/25 | Wed 31/12/25 | 365 days | 104,101,103 | 2 | Wed 1/1/25 | NA | 33% | [Gantt bars for task 105] | | | | | | | | | | | | | | | | | | | | | | | | | | | | | | |
| 106 | Deliver of public fill to mainland in year 2026 | Thu 1/1/26 | Thu 31/12/26 | 365 days | | | NA | NA | 0% | [Gantt bars for task 106] | | | | | | | | | | | | | | | | | | | | | | | | | | | | | | |
| 107 | Submitting application documents to EPD for application of dumping permits | Thu 18/12/25 | Thu 18/12/25 | 1 day | | | NA | NA | 0% | [Gantt bars for task 107] | | | | | | | | | | | | | | | | | | | | | | | | | | | | | | |
| 108 | Obtaining the dumping permit from EPD (assumed on 31/12/25) | Fri 19/12/25 | Wed 31/12/25 | 13 days | 107 | 0 | NA | NA | 0% | [Gantt bars for task 108] | | | | | | | | | | | | | | | | | | | | | | | | | | | | | | |
| 109 | Submitting application documents to the Employer for the application of the dumping permit of waste at the sea | Thu 20/11/25 | Thu 20/11/25 | 1 day | | | NA | NA | 0% | [Gantt bars for task 109] | | | | | | | | | | | | | | | | | | | | | | | | | | | | | | |
| 110 | Obtaining the dumping permits from Ministry of Ecology and Environment of the People's Republic of China through the Employer (assumed on 30/09/2024) | Fri 21/11/25 | Wed 31/12/25 | 41 days | 109 | 0 | NA | NA | 0% | [Gantt bars for task 110] | | | | | | | | | | | | | | | | | | | | | | | | | | | | | | |
| 111 | Obtaining all necessary permits, licenses, approvals and consents | Sun 21/12/25 | Wed 31/12/25 | 11 days | | 0 | NA | NA | 0% | [Gantt bars for task 111] | | | | | | | | | | | | | | | | | | | | | | | | | | | | | | |
| 112 | Collection and delivery of 11,400,000 tonnes of Public Fill | Thu 1/1/26 | Thu 31/12/26 | 365 days | 108,110,111 | 2 | NA | NA | 0% | [Gantt bars for task 112] | | | | | | | | | | | | | | | | | | | | | | | | | | | | | | |
| 113 | Deliver of public fill to mainland in year 2027 | Fri 1/1/27 | Sat 31/7/27 | 212 days | | | NA | NA | 0% | [Gantt bars for task 113] | | | | | | | | | | | | | | | | | | | | | | | | | | | | | | |
| 114 | Submitting application documents to EPD for application of dumping permits | Fri 18/12/26 | Fri 18/12/26 | 1 day | | | NA | NA | 0% | [Gantt bars for task 114] | | | | | | | | | | | | | | | | | | | | | | | | | | | | | | |
| 115 | Obtaining the dumping permit from EPD (assumed on 31/12/26) | Sat 19/12/26 | Thu 31/12/26 | 13 days | 114 | 0 | NA | NA | 0% | [Gantt bars for task 115] | | | | | | | | | | | | | | | | | | | | | | | | | | | | | | |
| 116 | Submitting application documents to the Employer for the application of the dumping permit of waste at the sea | Fri 20/11/26 | Fri 20/11/26 | 1 day | | | NA | NA | 0% | [Gantt bars for task 116] | | | | | | | | | | | | | | | | | | | | | | | | | | | | | | |
| 117 | Obtaining the dumping permits from Ministry of Ecology and Environment of the People's Republic of China through the Employer (assumed on 30/09/2024) | Sat 21/11/26 | Thu 31/12/26 | 41 days | 116 | 0 | NA | NA | 0% | [Gantt bars for task 117] | | | | | | | | | | | | | | | | | | | | | | | | | | | | | | |

Project: 3 month rolling Programme CV/2023/10
May to July

| | | | | | | | |
|-----------------|--|--------------------|--|-----------------------|--|--------------------|--|
| Task | | External Tasks | | Duration-only | | External Tasks | |
| Split | | External Milestone | | Manual Summary Rollup | | External Milestone | |
| Milestone | | Inactive Milestone | | Manual Summary | | Progress | |
| Summary | | Inactive Summary | | Start-only | | Deadline | |
| Project Summary | | Manual Task | | Finish-only | | | |

Appendix H

Implementation Schedule of Environmental Mitigation Measures (EMIS)

Environmental Mitigation Implementation Schedule

| Environmental Protection Measures | Location | Implementation Status | | | |
|--|----------------|-----------------------|-----------------------|-----------------|----------------|
| | | Implemented | Partially implemented | Not implemented | Not Applicable |
| Air Quality | | | | | |
| ▪ Dust control / mitigation measures shall be provided to prevent dust nuisance. | All areas | | √ | | |
| ▪ Water sprays shall be provided and used to dampen materials. | All areas | √ | | | |
| ▪ All stockpile of aggregate or spoil should be enclosed or covered and water applied in dry or windy condition. | All areas | √ | | | |
| ▪ Any vehicle with open load carrying area used for moving materials which has the potential to create dust shall have properly fitting side and tail boards. Material having the potential to create dust shall not be loaded to a level higher than the side and tail boards, and shall be covered by a clean tarpaulin. | All areas | √ | | | |
| ▪ Unpaved areas should be watered regularly to avoid dust generation. | Site Egress | √ | | | |
| ▪ The designated site main haul road shall be paved or regular watering. | All haul roads | √ | | | |
| ▪ The public road around the site entrance should be kept clean and free from dust. | All areas | √ | | | |
| ▪ Wheel washing facilities including high-pressure water jet shall be provided at the entrance of work site and wash-water shall have sand and silt settled out or removed before being discharged into storm drains. | Site Egress | √ | | | |
| ▪ Every vehicle shall be washed to remove any dusty materials from its body and wheels before leaving the fill bank. | Site Egress | √ | | | |
| ▪ The temporary slope surfaces shall be covered with impermeable sheet or sprayed with water. | All areas | √ | | | |
| ▪ Vehicle and equipment should be switched off while not in use. | All areas | √ | | | |
| ▪ All plant and equipment should be well maintained e.g. without black smoke emission. | All areas | √ | | | |
| ▪ Open burning should be prohibited. | All areas | √ | | | |
| ▪ Approval or exemption Non-road Mobile Machinery (NRMM) labels should be painted or securely fixed on regulated machines and non-road vehicles at a conspicuous position according to the Air Pollution Control (Non-road Mobile Machinery) (Emission) Regulation (APCO Cap.311). | All areas | √ | | | |
| Noise Impact | | | | | |
| ▪ The approved method of working, equipment and sound-reducing measures (e.g. use of silenced type of equipment, etc.) shall be adapted. | All areas | √ | | | |
| ▪ Only well maintained plant should be operated on-site and plant should be serviced regularly during the site works. | All areas | √ | | | |
| ▪ Powered mechanical equipment (PME) should be covered or shielded by appropriate acoustic materials. | All areas | √ | | | |
| ▪ Air compressors and hand held breakers should have noise labels. | All areas | √ | | | |
| ▪ Machines and plants that may be in intermittent use should be shut down between work periods or should be throttled down to a minimum. | All areas | √ | | | |
| ▪ Noisy equipment and mobile plant shall always be site away from NSRs. | All areas | √ | | | |

Remark: √ = Implemented, ∇ = Partially Implemented X = Not Implemented N/A = Not Applicable

| Environmental Protection Measures | Location | Implementation Status | | | |
|--|------------------------|-----------------------|-----------------------|-----------------|----------------|
| | | Implemented | Partially implemented | Not implemented | Not Applicable |
| Water Quality | | | | | |
| <ul style="list-style-type: none"> The existing / realigned intercepting channels and the sand / silt removal facilities shall be used and maintained. | All areas | √ | | | |
| <ul style="list-style-type: none"> Temporary intercepting drains should be used at the stockpiling area to divert polluted stormwater to the intercepting channels. Earth bunds and sand bay barriers shall be used to assist the diversion of polluted stormwater to the intercepting channels. | All areas | √ | | | |
| <ul style="list-style-type: none"> The stormwater intercepting system shall be effective to collect of runoff and remove suspended solids before discharge. | All areas | √ | | | |
| <ul style="list-style-type: none"> The material shall be properly covered to prevent washed away especially before rainstorm. | All areas | √ | | | |
| <ul style="list-style-type: none"> Unnecessary water retained in receptacles and standing water should be avoided to prevent mosquito breeding. | All areas | √ | | | |
| <ul style="list-style-type: none"> The temporary slope surfaces shall be covered with impermeable sheet or sprayed with water. | Temporary Slopes | √ | | | |
| <ul style="list-style-type: none"> Existing and newly constructed Catchpits, sand and silt removal facilities and intercepting channels shall be maintained, and the deposited silt and grit shall be removed weekly and on a need basis especially at the onset of and after each rainstorm to ensure that these facilities are functioning properly at all times. | All areas | √ | | | |
| <ul style="list-style-type: none"> A wheel washing bay shall be provided at the site exit and wash-water shall have sand and silt settled out or removed before being discharged into storm drains. | Wheel Washing facility | √ | | | |
| <ul style="list-style-type: none"> The section of construction road between wheel washing bay and the public road shall be paved with concrete, bituminous materials or hardcores to reduce vehicle tracking of soil and to prevent site run-off from entering public road drains. | Site Egress | √ | | | |
| <ul style="list-style-type: none"> Sewage from toilets shall be discharged in to a foul sewer, or chemical toilets shall be provided. | Site Office | √ | | | |
| <ul style="list-style-type: none"> The chemical toilets (if use) shall be provided by a licensed contractor, who will be responsible for disposal and maintenance of these facilities. | All areas | √ | | | |
| <ul style="list-style-type: none"> Tipping halls enclosed with top and 3-side to prevent spillage of material into marine water. | All areas | √ | | | |
| <ul style="list-style-type: none"> Adequate environmental control measures shall be provided to prevent / avoid dropping of fill material into the sea during the transfer. | Along the seafront | √ | | | |
| <ul style="list-style-type: none"> A waste collection vessel shall be deployed to remove floating debris. | Along the seafront | √ | | | |
| Landscape and Visual | | | | | |
| <ul style="list-style-type: none"> The maximum stockpiling height at the fill bank shall be limited to a maximum of +40mPD. | All areas | √ | | | |
| <ul style="list-style-type: none"> Surface of outer slopes of the Fill Bank shall preferably be hydroseeded. | Completed slopes | √ | | | |
| <ul style="list-style-type: none"> Stockpile of public fill shall be removed in a sequence to allow the outer hydrseeded to be removed later than other portions as far as practicable. | Completed slopes | √ | | | |
| <ul style="list-style-type: none"> Casuarina equisetifolia were planted as buffer tree along the northern perimeter of the Site. The height of Casuarina equisetifolia was maintained at least 3m above soil level. | Site boundary | √ | | | |
| <ul style="list-style-type: none"> Lighting shall be set to minimise night-time glare. | All areas | √ | | | |
| Waste Management | | | | | |
| Construction Waste Management | | | | | |
| <ul style="list-style-type: none"> Relevant licence / permits for disposal of construction waste or excavated materials available for inspection. | All areas | √ | | | |

Remark: √ = Implemented, ∇ = Partially Implemented X = Not Implemented N/A = Not Applicable

| Environmental Protection Measures | Location | Implementation Status | | | |
|--|--------------------|-----------------------|-----------------------|-----------------|----------------|
| | | Implemented | Partially implemented | Not implemented | Not Applicable |
| • Excavated material to be generated from construction works to be re-used on-site as far as practicable to reduce off-site disposal. | All areas | √ | | | |
| • Mud and debris should be removed from waterworks access roads and associated drainage systems. | All areas | √ | | | |
| • Segregation and storage of different types of waste in different containers, skips or stockpiles to enhance reuse or recycling of materials and their proper disposal. | All areas | √ | | | |
| • Prior to disposal of C&D waste, recyclable materials should be salvaged for reuse (such as wood and metal) and inert waste utilised as public fill to minimise the quantity of waste to be disposed of to landfill. | All areas | √ | | | |
| • In order to monitor the disposal of C&D material and solid wastes at public filling areas and landfills, and to control fly-tipping, a trip-ticket system should be included as one of the contractual requirements. | All areas | √ | | | |
| • Any soil contaminated with chemicals/oils shall be removed from site and the void created shall be filled with suitable materials. | All areas | √ | | | |
| Chemical Waste Management | | | | | |
| • It is required to register as a chemical waste producer if chemical wastes would be produced from the site activities. The Waste Disposal Ordinance (Cap 354) and its subsidiary regulations in particular the Waste Disposal (Chemical Waste) (General) Regulation should be observed and complied with for control of chemical wastes. | Waste Storage Area | √ | | | |
| • After use, chemical wastes (e.g. cleaning fluids, solvents, lubrication oil and fuel) should be handled according to the Code of Practice on the Packaging, Labelling and Storage of Chemical Wastes. | Waste Storage Area | √ | | | |
| • Spent chemicals should be stored and collected by an approved operator for disposal at the Chemical Waste Treatment Facility or other licensed facility in accordance with the Chemical Waste (General) Regulation. | Waste Storage Area | √ | | | |
| • Chemical wastes should be separated for special handling and appropriate treatment at the Chemical Waste Treatment Facility. | Waste Storage Area | √ | | | |
| • Chemical wastes including waste oil should be stored properly in designated areas, e.g. chemical waste storage area. | Waste Storage Area | √ | | | |
| • The designated chemical waste storage area should only be used for storing chemical wastes. | Waste Storage Area | √ | | | |
| The set-up of chemical waste storage area should | | | | | |
| • Be suitable for the substance they are holding, resistant to corrosion, maintained in a good condition. | Waste Storage Area | √ | | | |
| • Be enclosed on at least 3 sides and securely closed. | Waste Storage Area | √ | | | |
| • Have an impermeable floor and bunding, of capacity to accommodate 110% of the volume of the largest container or 20% by volume of the chemical waste stored in that area, whichever is the greatest. | Waste Storage Area | √ | | | |
| • Have adequate ventilation. | Waste Storage Area | √ | | | |
| • Be covered to prevent rainfall entering (water collected within the bund must be tested and disposal as chemical waste if necessary). | Waste Storage Area | √ | | | |
| • Be arranged so that incompatible materials are adequately separated. | Waste Storage Area | √ | | | |
| • Warning panels should be displayed at the waste storage area. | Waste Storage Area | √ | | | |

| Environmental Protection Measures | Location | Implementation Status | | | |
|---|-----------------------|-----------------------|-----------------------|-----------------|----------------|
| | | Implemented | Partially implemented | Not implemented | Not Applicable |
| • Waste storage area should be cleaned and maintained regularly. | Waste Storage Area | √ | | | |
| • Chemical waste should be transported by a registered chemical waste collector to a facility licensed to receive chemical waste. | All areas | √ | | | |
| • All generators, fuel and oil storage should be within bundle areas. | All areas | √ | | | |
| • Oil leakage from machinery, vehicle and plant should be prevented. | All areas | | √ | | |
| • In the event of chemical waste / dangerous goods / chemicals spillage or leakage, the procedures as outlined in the Spillage Response Plan should be followed. | All areas | √ | | | |
| • The dangerous goods / chemical spillage or leakage procedures (including equipments) should be in place. | All areas | √ | | | |
| Good Site Practices | | | | | |
| • Nomination of approved personnel, such as site manager, to be responsible for good site practices, arrangements for collection and effective disposal to an appropriate facility, of all wastes generated at the site. | All areas | √ | | | |
| • Training of site personnel in proper waste management and chemical handling procedures should be provided. | All areas | √ | | | |
| • Good site practices should be adopted to clean the rubbish and litter on a regular basis so as to prevent the rubbish and litter from dropping into the nearby environment. | All areas | √ | | | |
| • Proper storage and site practices to minimise the potential for damage or contamination of construction materials. | All areas | √ | | | |
| • The Environmental Permit should be displaced conspicuously on site. | Site Entrance | √ | | | |
| • Construction noise permits should be posted at site entrance or available for site inspection. | Site Entrance | | | | √ |
| • Plan and stock construction materials carefully to minimise amount of waste generated and avoid unnecessary generation of waste. | All areas | √ | | | |
| • Chemical storage area provided with lock and located on sealed areas. | Chemical Storage Area | √ | | | |
| • All chemicals should be placed at the banded area with adequate band capacity (>110% of largest tank). | Chemical Storage Area | √ | | | |
| • Any unused chemicals or those with remaining functional capacity should be recycled. | All areas | √ | | | |
| • Regular cleaning and maintenance programme for waste storage area, drainage systems, silt traps, sumps and oil interceptors. | All areas | √ | | | |
| • To encourage collection of aluminium cans by individual collectors, separate labelled bins should be provided to segregate this waste from other general refuse generated by the workforce. | All areas | √ | | | |
| • A recording system for the amount of wastes generated, recycled and disposed (including the disposal sites) should be used, e.g. trip ticket system for chemical waste disposal. Quantities could be determined by weighing each load or other suitable methods. | All areas | √ | | | |
| • A collection area should be provided where waste can be stored and loaded prior to removal from site. An enclosed and covered area is preferred to reduce the occurrence of 'wind blown' light material. If an open area is unavoidable for the storage or loading/unloading of wastes, then the area should be banded and all the polluted surface run-off collected within this area should be diverted into wastewater treatment system. | All areas | √ | | | |
| • Remove wastes in a timely manner. | All areas | √ | | | |

Appendix I

Statistical Analysis of the Trend of Suspended Solids in the Quarter

Statistical Analysis of the Trend of Suspended Solids

For Mid-Flood Tide

Station: TM-FM1

t-test

| Group Name | N | Missing | Mean | Std Dev | SE |
|--------------------------|----|---------|--------|---------|--------|
| 130%
Baseline
Mean | 12 | 0 | 5.9733 | 1.3518 | 0.3902 |
| Quarterly
Mean | 40 | 0 | 3.5883 | 1.0747 | 0.1699 |

Result:

Difference between means = 2.3850
 (95% CI : 1.6304 < Diff < 3.1396)

t-value of difference = 5.6035 (15 degrees of freedom)

Calculated t-value > Critical t-value

Conclusion:

There is statistically significant difference between the groups.
 The P-Value of 130% Baseline Mean is larger than quarterly mean = >0.99
 The result of suspended solids in this reporting period is lower than that of 130% baseline.

Station: TM-FM2

t-test

| Group Name | N | Missing | Mean | Std Dev | SE |
|--------------------------|----|---------|--------|---------|--------|
| 130%
Baseline
Mean | 12 | 0 | 6.0267 | 1.1748 | 0.3391 |
| Quarterly
Mean | 40 | 0 | 3.5604 | 1.0369 | 0.1640 |

Result:

Difference between means = 2.4663
 (95% CI : 1.7597 < Diff < 3.1729)

t-value of difference = 6.5473 (16 degrees of freedom)

Calculated t-value > Critical t-value

Conclusion:

There is statistically significant difference between the groups.
 The P-Value of 130% Baseline Mean is larger than quarterly mean = >0.99
 The result of suspended solids in this reporting period is lower than that of 130% baseline.

Statistical Analysis of the Trend of Suspended Solids

For Mid-Flood Tide

Station: TM-FC1

t-test

| Group Name | N | Missing | Mean | Std Dev | SE |
|--------------------|----|---------|--------|---------|--------|
| 130% Baseline Mean | 12 | 0 | 6.6942 | 1.8839 | 0.5438 |
| Quarterly Mean | 40 | 0 | 3.4892 | 1.1290 | 0.1785 |

Result:

Difference between means = 3.2050
(95% CI : 2.3243 < Diff < 4.0858)

t-value of difference = 5.5995 (13 degrees of freedom)

Calculated t-value > Critical t-value

Conclusion:

There is statistically significant difference between the groups.
The P-Value of 130% Baseline Mean is larger than quarterly mean = >0.99
The result of suspended solids in this reporting period is lower than that of 130% baseline.

Station: TM-FC2

t-test

| Group Name | N | Missing | Mean | Std Dev | SE |
|--------------------|----|---------|--------|---------|--------|
| 130% Baseline Mean | 12 | 0 | 6.3067 | 1.8674 | 0.5391 |
| Quarterly Mean | 40 | 0 | 4.1175 | 1.0549 | 0.1668 |

Result:

Difference between means = 2.1892
(95% CI : 1.3438 < Diff < 3.0346)

t-value of difference = 3.8796 (13 degrees of freedom)

Calculated t-value > Critical t-value

Conclusion:

There is statistically significant difference between the groups.
The P-Value of 130% Baseline Mean is larger than quarterly mean = >0.99
The result of suspended solids in this reporting period is lower than that of 130% baseline.

Statistical Analysis of the Trend of Suspended Solids For Mid-Ebb Tide

Station: TM-FM1

t-test

| Group Name | N | Missing | Mean | Std Dev | SE |
|-----------------------|----|---------|--------|---------|--------|
| 130% Baseline
Mean | 12 | 0 | 7.0008 | 1.6394 | 0.4733 |
| Quarterly Mean | 40 | 0 | 3.6508 | 1.2425 | 0.1965 |

Result:

Difference between means = 3.3500
(95% CI : 2.4641 < Diff < 4.2358)

t-value of difference = 6.5376 (15 degrees of freedom)

Calculated t-value > Critical t-value

Conclusion:

There is statistically significant difference between the groups.
The P-Value of 130% Baseline Mean is larger than quarterly mean = >0.99
The result of suspended solids in this reporting period is lower than that of 130% baseline.

Station: TM-FM2

t-test

| Group Name | N | Missing | Mean | Std Dev | SE |
|-----------------------|----|---------|--------|---------|--------|
| 130% Baseline
Mean | 12 | 0 | 7.2758 | 1.5293 | 0.4415 |
| Quarterly Mean | 40 | 0 | 3.7163 | 1.2413 | 0.1963 |

Result:

Difference between means = 3.5596
(95% CI : 2.6934 < Diff < 4.4257)

t-value of difference = 7.3676 (16 degrees of freedom)

Calculated t-value > Critical t-value

Conclusion:

There is statistically significant difference between the groups.
The P-Value of 130% Baseline Mean is larger than quarterly mean = >0.99
The result of suspended solids in this reporting period is lower than that of 130% baseline.

Statistical Analysis of the Trend of Suspended Solids

For Mid-Ebb Tide

Station: TM-FC1

t-test

| Group Name | N | Missing | Mean | Std Dev | SE |
|--------------------|----|---------|--------|---------|--------|
| 130% Baseline Mean | 12 | 0 | 7.0008 | 1.6394 | 0.4733 |
| Quarterly Mean | 40 | 0 | 3.9288 | 1.3058 | 0.2065 |

Result:

Difference between means = 3.0721
(95% CI : 2.1557 < Diff < 3.9884)

t-value of difference = 5.9498 (15 degrees of freedom)

Calculated t-value > Critical t-value

Conclusion:

There is statistically significant difference between the groups.
The P-Value of 130% Baseline Mean is larger than quarterly mean = >0.99
The result of suspended solids in this reporting period is lower than that of 130% baseline.

Station: TM-FC2

t-test

| Group Name | N | Missing | Mean | Std Dev | SE |
|--------------------|----|---------|--------|---------|--------|
| 130% Baseline Mean | 12 | 0 | 7.2758 | 1.5293 | 0.4415 |
| Quarterly Mean | 40 | 0 | 3.6096 | 1.2212 | 0.1931 |

Result:

Difference between means = 3.6662
(95% CI : 2.8099 < Diff < 4.5225)

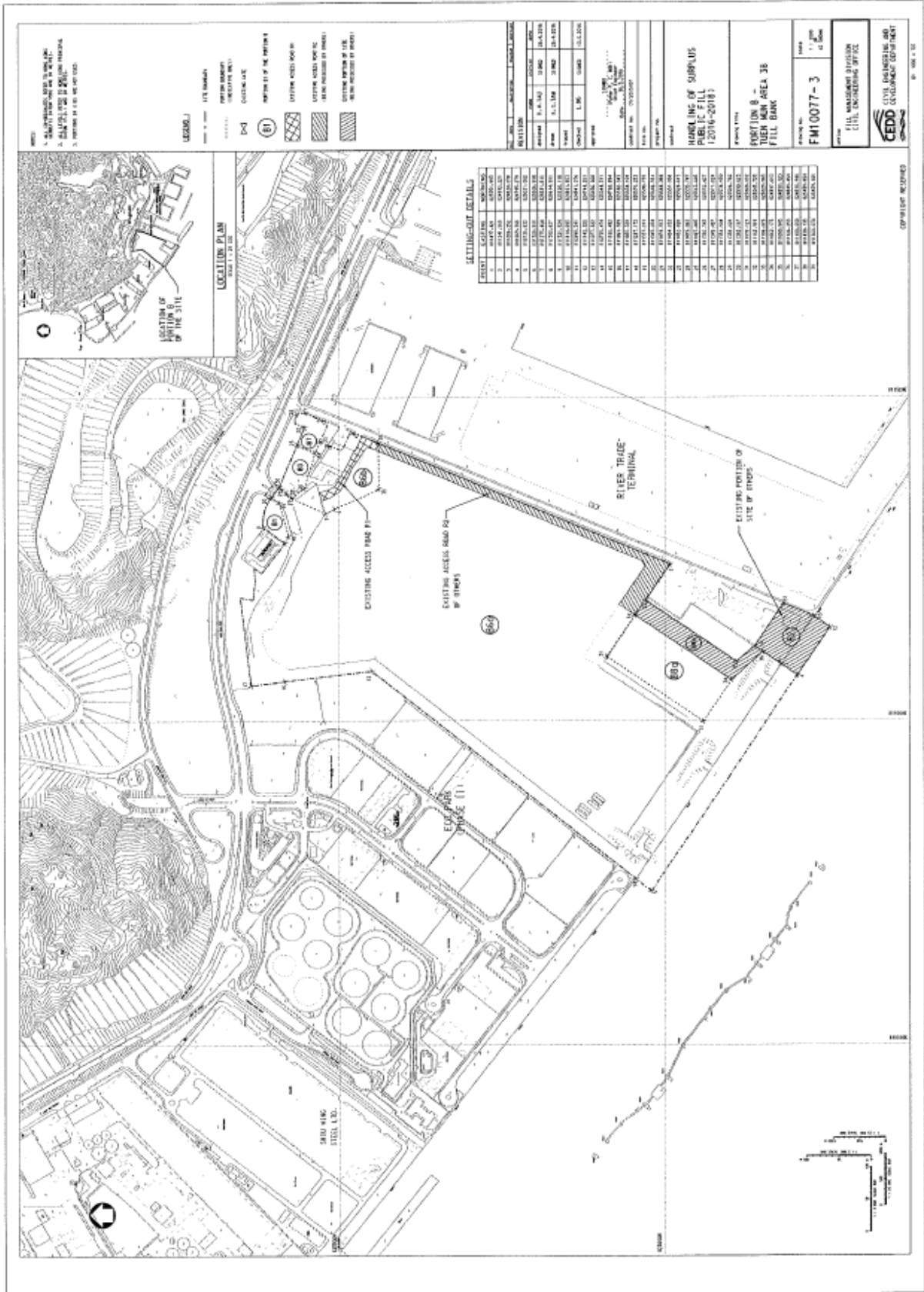
t-value of difference = 7.6087 (15 degrees of freedom)

Calculated t-value > Critical t-value

Conclusion:

There is statistically significant difference between the groups.
The P-Value of 130% Baseline Mean is larger than quarterly mean = >0.99
The result of suspended solids in this reporting period is lower than that of 130% baseline.

Appendix J
Site General Layout plan



Appendix K

Weather Condition

Daily Extract of Meteorological Observations , April 2025 - Tuen Mun

| Day | Mean Pressure (hPa) | Air Temperature | | | Mean Dew Point (deg. C) | Mean Relative Humidity (%) | Total Rainfall (mm) | Prevailing Wind Direction (degrees) | Mean Wind Speed (km/h) |
|-----|---------------------|-----------------------------|--------------|-----------------------------|-------------------------|----------------------------|---------------------|-------------------------------------|------------------------|
| | | Absolute Daily Max (deg. C) | Mean (deg.C) | Absolute Daily Min (deg. C) | | | | | |
| 1 | 1018.3 | 20.3 | 16.1 | 12.9 | 9.9 | 67 | - | 360 | 19.2 |
| 2 | 1019.1 | 23.4 | 18.6 | 15 | 11.4 | 63 | - | 80 | 16 |
| 3 | 1018.6 | 25.5 | 20.6 | 16.9 | 10.9 | 57 | - | 50 | 12.8 |
| 4 | 1016.2 | 21 | 19.9 | 18.9 | 14.6 | 72 | Trace | 60 | 26.3 |
| 5 | 1015.3 | 19.8 | 19.3 | 18.7 | 17.6 | 90 | 7.3 | 10 | 18.5 |
| 6 | 1015.9 | 23.4 | 20.5 | 18.8 | 15.6 | 74 | Trace | 10 | 10.2 |
| 7 | 1016.9 | 26.6 | 22.1 | 19.5 | 14.5 | 64 | - | 40 | 14.3 |
| 8 | 1016.2 | 26.7 | 23.2 | 20.8 | 17.7 | 72 | - | 40 | 8.8 |
| 9 | 1012.5 | 27.2 | 24.1 | 22.2 | 19.6 | 77 | - | 210 | 4 |
| 10 | 1009.2 | 27.8 | 24.6 | 22.7 | 20.9 | 80 | - | 230 | 5 |
| 11 | 1008.8 | 27.6 | 25 | 23 | 22.3 | 85 | Trace | 170 | 5.9 |
| 12 | 1009.3 | 27.1 | 24.6 | 20.4 | 20.9 | 81 | 6.9 | 220 | 36.9 |
| 13 | 1015 | 24.5 | 21.8 | 20.3 | 4.2 | 32 | Trace | 360 | 23.8 |
| 14 | 1012.9 | 26.2 | 22.6 | 19.8 | 11.1 | 49 | - | 250 | 12.2 |
| 15 | 1012.5 | 33 | 25.8 | 20.3 | 12.7 | 48 | - | 40 | 12.4 |
| 16 | 1012.2 | 27.5 | 24 | 21.9 | 18.8 | 73 | - | 50 | 15.3 |
| 17 | 1010.1 | 28.7 | 24.5 | 22.4 | 20.4 | 78 | - | 60 | 5.8 |
| 18 | 1009.6 | 26.5 | 24.9 | 23.5 | 23.1 | 90 | 3.5 | 40 | 10.6 |
| 19 | 1009.7 | 28 | 26.3 | 25 | 23.8 | 86 | 0.1 | 180 | 19.3 |
| 20 | 1011.1 | 30.6 | 27.1 | 25.8 | 23.1 | 79 | - | 210 | 13.6 |
| 21 | 1012 | 29.1 | 26.9 | 25.6 | 22.9 | 79 | - | 190 | 14 |
| 22 | 1010.5 | 29.1 | 27.3 | 25.8 | 23.1 | 78 | - | 220 | 19.8 |
| 23 | 1009.3 | 30.8 | 27.8 | 26.4 | 23.4 | 77 | - | 220 | 18.1 |
| 24 | 1009.3 | 30.1 | 27.5 | 26.1 | 23.3 | 78 | 0.5 | 210 | 15.6 |
| 25 | 1011.5 | 26.5 | 25.2 | 23.5 | 23.2 | 88 | 18.9 | 80 | 11.8 |
| 26 | 1014.6 | 23.9 | 22.3 | 21.3 | 19.7 | 85 | Trace | 60 | 34 |
| 27 | 1013.4 | 23.2 | 22.2 | 21.2 | 20.8 | 92 | 0.8 | 50 | 18.4 |
| 28 | 1011.7 | 29.3 | 25.3 | 22.6 | 22.4 | 85 | 19.1 | 10 | 6.6 |
| 29 | 1013.5 | 28.3 | 25.4 | 23.5 | 17.9 | 64 | - | 70 | 24.1 |
| 30 | 1013.3 | 29.2 | 25.2 | 23.1 | 20.5 | 75 | - | 60 | 14.4 |
| | | | | | | | | | |

Rainfall measured in increment of 0.5 mm. Amount of < 0.5 mm cannot be detected

Daily Extract of Meteorological Observations , May 2025 - Tuen Mun

| Day | Mean Pressure (hPa) | Air Temperature | | | Mean Dew Point (deg. C) | Mean Relative Humidity (%) | Total Rainfall (mm) | Prevailing Wind Direction (degrees) | Mean Wind Speed (km/h) |
|-----|---------------------|-----------------------------|--------------|-----------------------------|-------------------------|----------------------------|---------------------|-------------------------------------|------------------------|
| | | Absolute Daily Max (deg. C) | Mean (deg.C) | Absolute Daily Min (deg. C) | | | | | |
| 1 | 1012.9 | 27.9 | 25.6 | 24.5 | 22.4 | 83 | 1.4 | 240 | 4.6 |
| 2 | 1011.3 | 32.3 | 27.4 | 24.6 | 22.2 | 75 | - | 90 | 4.2 |
| 3 | 1010.1 | 29.7 | 26.8 | 25.3 | 23.2 | 81 | - | 50 | 8.7 |
| 4 | 1008.8 | 31.7 | 27.5 | 25.5 | 23.9 | 81 | Trace | 110 | 11 |
| 5 | 1008.5 | 32 | 27.8 | 25.8 | 23.8 | 79 | Trace | 110 | 12.7 |
| 6 | 1008 | 30.4 | 28.1 | 26.9 | 24.6 | 82 | 0.4 | 200 | 10.5 |
| 7 | 1008 | 28 | 27.1 | 25.6 | 25 | 88 | 9.8 | 110 | 18.1 |
| 8 | 1008 | 29.2 | 26.4 | 25 | 24 | 87 | 0.6 | 80 | 21.6 |
| 9 | 1007.8 | 29.3 | 27.2 | 25.7 | 23.9 | 83 | 0.4 | 10 | 8 |
| 10 | 1009 | 30.7 | 27.2 | 25.1 | 22.5 | 76 | Trace | 360 | 7.6 |
| 11 | 1010.1 | 29.5 | 24.8 | 21 | 15.2 | 57 | 3.9 | 10 | 23.8 |
| 12 | 1010.9 | 30.4 | 25.9 | 23.1 | 15.4 | 54 | - | 80 | 15.5 |
| 13 | 1012.4 | 29.3 | 25.8 | 23.8 | 20.3 | 72 | - | 70 | 23.1 |
| 14 | 1012.8 | 31.4 | 27.2 | 25 | 22.9 | 78 | Trace | 60 | 18.1 |
| 15 | 1012.3 | 31.9 | 28.2 | 26.3 | 24 | 78 | - | 60 | 12.6 |
| 16 | 1011.2 | 29.3 | 27.8 | 26.7 | 24.6 | 83 | Trace | 90 | 5.6 |
| 17 | 1010.8 | 32.8 | 28.8 | 26.7 | 24.2 | 77 | - | 210 | 4.1 |
| 18 | 1010.3 | 32.5 | 29 | 27.3 | 24.5 | 77 | - | 230 | 7.1 |
| 19 | 1009.1 | 31.5 | 29 | 27.9 | 24.8 | 78 | Trace | 200 | 7.9 |
| 20 | 1009.2 | 30.8 | 29.5 | 28.3 | 25.1 | 77 | - | 180 | 15.3 |
| 21 | 1009.3 | 32.4 | 29.9 | 28.5 | 25.1 | 76 | - | 190 | 12.9 |
| 22 | 1007.6 | 33 | 30.1 | 28.4 | 24.8 | 74 | - | 200 | 14.8 |
| 23 | 1006.8 | 32.4 | 29.7 | 26.5 | 25.1 | 77 | 2 | 220 | 20 |
| 24 | 1009.7 | 30.5 | 27.9 | 26.4 | 23.2 | 76 | 3.5 | 360 | 10.8 |
| 25 | 1013.7 | 27.3 | 25.9 | 24.5 | 18.9 | 65 | - | 10 | 23.9 |
| 26 | 1014.7 | 27.7 | 25.5 | 24.2 | 18 | 63 | - | 50 | 25.2 |
| 27 | 1013.5 | 29.2 | 26.3 | 24.4 | 19.7 | 67 | - | 70 | 30.4 |
| 28 | 1010.2 | 27.3 | 26 | 25 | 22.7 | 82 | Trace | 80 | 28.5 |
| 29 | 1008.8 | 27.9 | 26.2 | 25 | 24.4 | 90 | 53.2 | 80 | 24.4 |
| 30 | 1009.5 | 25 | 24.3 | 23.6 | 22.1 | 88 | 6.4 | 70 | 43.9 |
| 31 | 1007.1 | 25.4 | 25 | 24.3 | 21.6 | 82 | Trace | 70 | 38 |

Rainfall measured in increment of 0.5 mm. Amount of < 0.5 mm cannot be detected

Daily Extract of Meteorological Observations , June 2025 - Tuen Mun

| Day | Mean Pressure (hPa) | Air Temperature | | | Mean Dew Point (deg. C) | Mean Relative Humidity (%) | Total Rainfall (mm) | Prevailing Wind Direction (degrees) | Mean Wind Speed (km/h) |
|-----|---------------------|-----------------------------|--------------|-----------------------------|-------------------------|----------------------------|---------------------|-------------------------------------|------------------------|
| | | Absolute Daily Max (deg. C) | Mean (deg.C) | Absolute Daily Min (deg. C) | | | | | |
| 1 | 1003.9 | 31.2 | 27.5 | 24.9 | 24.4 | 83 | 0.1 | 60 | 8.9 |
| 2 | 1002.2 | 31.2 | 29.4 | 28.2 | 26.3 | 83 | 0.1 | 210 | 17.7 |
| 3 | 1003.2 | 30.6 | 28.8 | 27.7 | 25.3 | 81 | Trace | 230 | 8 |
| 4 | 1007.3 | 28.5 | 26.4 | 25 | 23.8 | 86 | 3.8 | 70 | 24.8 |
| 5 | 1009.2 | 28.1 | 26.4 | 24.8 | 22.3 | 78 | Trace | 70 | 22.6 |
| 6 | 1008.3 | 31.8 | 28.1 | 26.1 | 24 | 79 | - | 50 | 12.3 |
| 7 | 1007.2 | 33.6 | 29.6 | 27 | 24.8 | 76 | - | 170 | 6 |
| 8 | 1005.9 | 33.2 | 30.1 | 28 | 25.4 | 76 | - | 210 | 10.8 |
| 9 | 1004.5 | 34.3 | 30.7 | 28.2 | 25.1 | 73 | - | 190 | 7.3 |
| 10 | 1004.2 | 35.6 | 31 | 28.4 | 25.3 | 72 | - | 60 | 17 |
| 11 | 1004.3 | 31.2 | 29.4 | 28.7 | 25.6 | 80 | 4.7 | 70 | 35.4 |
| 12 | 1004.6 | 31.3 | 28.5 | 27.1 | 25.3 | 83 | 14.6 | 80 | 37.2 |
| 13 | 1005.8 | 31 | 27.5 | 26.2 | 25.4 | 88 | 46.1 | 80 | 15.6 |
| 14 | 1005.5 | 31.5 | 29.1 | 27.1 | 25.5 | 81 | 1.6 | 170 | 39.9 |
| 15 | 1005.2 | 30.1 | 29.3 | 28.7 | 25.4 | 79 | 0.9 | 220 | 44.1 |
| 16 | 1007.7 | 31.1 | 29.4 | 28.3 | 25.5 | 80 | 1 | 220 | 24.5 |
| 17 | 1009.8 | 29.5 | 27.7 | 25.5 | 25.4 | 88 | 46.3 | 180 | 22.4 |
| 18 | 1009.7 | 31.8 | 29.2 | 26.7 | 25.4 | 80 | 0.5 | 160 | 23 |
| 19 | 1009 | 32.5 | 28.7 | 27 | 25.5 | 83 | 11.1 | 130 | 19.8 |
| 20 | 1008.7 | 30.4 | 28.4 | 27.1 | 24.9 | 82 | 6.3 | 170 | 18.4 |
| 21 | 1009.1 | 32.2 | 29.1 | 26.5 | 25.1 | 80 | 10.6 | 160 | 22.6 |
| 22 | 1009 | 31.7 | 29.2 | 27.4 | 25.4 | 80 | 2.9 | 190 | 19.2 |
| 23 | 1007.3 | 32.1 | 29.6 | 27 | 24.8 | 76 | 7.6 | 230 | 19.8 |
| 24 | 1007.7 | 33.4 | 30.1 | 28.4 | 24.7 | 73 | - | 220 | 13.8 |
| 25 | 1008.6 | 34.5 | 30.7 | 27.9 | 24.9 | 72 | 0.2 | 50 | 14.1 |
| 26 | 1008.1 | 31.6 | 28.9 | 26.9 | 25.9 | 84 | 48.9 | 120 | 23.9 |
| 27 | 1007.7 | 30.1 | 28.4 | 27 | 25.7 | 86 | 5.6 | 140 | 17.3 |
| 28 | 1006.4 | 30.9 | 28.6 | 27 | 25.6 | 84 | 3.1 | 130 | 18.1 |
| 29 | 1005 | 30.8 | 28.8 | 27.4 | 25.5 | 83 | 3.7 | 100 | 14.8 |
| 30 | 1005.8 | 30.5 | 28.5 | 26.7 | 25.5 | 84 | 17.6 | 100 | 21.3 |
| | | | | | | | | | |

Rainfall measured in increment of 0.5 mm. Amount of < 0.5 mm cannot be detected

Appendix L

Complaint Log

Complaint Log

| Log Ref. | Location | Received Date | Details of Complaint | Investigation / Mitigation Action | Status |
|----------|---|---------------|---|--|--------|
| 001 | Lung Mun Road near Tuen Mun Area 38 Fill Bank | 24 May 2017 | One complaint received on 24 May 2017, which was forwarded to ET on 03 June 2017, from public against the rocks and debris deposited on the road surface along Lung Mun Road near Tuen Mun Area 38 Fill Bank. The complainant complained that waste generated caused an environmental nuisance. | Refer to the ET site investigation on 06 June 2017, the condition of Lung Mun Road near Tuen Mun Area 38 Fill Bank was found satisfactory.

Details of Action(s) Taken by the Contactor:
1. Regular water spraying by water lorries is provided for road cleaning at Lung Mun Road;
2. Regular cleaning on Lung Mun Road and the access road at the site exit by road sweeper to remove mud and gravel is arranged four times on each working day;
3. Site vehicles are washed to remove any dusty materials from their bodies and wheels by using high pressure water jet manually at the entrance of work site before leaving;
4. Site vehicle for transporting materials are covered properly by using clean tarpaulin sheets;
5. Regular cleaning at the site haul road is provided to minimize the fugitive dust emission. | Closed |
| 002 | Lung Mun Road near Tuen Mun Area 38 Fill Bank | 16 April 2018 | One complaint received on 16 April 2018 from public and forwarded to ET by email at 10:51 on 25 May 2018. The complaint detail was” 來往屯門第 38 區填料庫的龍門路沿路有很多泥頭車出入，泥頭會從車上掉至路面上，要求部門跟進及回覆。” | Refer to the ET site investigation on 26 May 2018, the condition of Lung Mun Road near Tuen Mun Area 38 Fill Bank was found satisfactory.

Details of Action(s) Taken by the Contactor:
1. Regular cleaning on Lung Mun Road and the access road at the site exit by road sweeper to remove mud and gravel is arranged four times on each working day;
2. Regular water spraying by water lorries is provided for road cleaning at Lung Mun Road;
3. Site vehicles are washed to remove any dusty materials from their bodies and wheels by using high pressure water jet manually at the entrance of work site before leaving;
4. Site vehicles for transporting materials are covered properly by using clean tarpaulin sheets;
5. Regular cleaning at the site haul road is provided | Closed |

| | | | | | |
|-----|---|-----------------|--|---|--------|
| 003 | Lung Mun Road near Tuen Mun Area 38 Fill Bank | 26 June 2018 | One complaint received on 26 June 2018 from public and forwarded to ET by email at 13:58 on 03 July 2018. The complaint detail was” 當天水車於 6 時出動洗街,導致交通阻塞.” | <p>Refer to the ET site investigation on 07 July 2018, the condition of Lung Mun Road near Tuen Mun Area 38 Fill Bank was found satisfactory.</p> <p>Details of Action(s) Taken by the Contactor:</p> <ol style="list-style-type: none"> 1. Improve the road washing plan to avoid washing in traffic peak period 2. Revised the road washing schedule as soon as possible once there is traffic jam | Closed |
| 004 | Tuen Mun Area 38 Fill Bank | 06 October 2021 | A complaint was received on 06 October 2021 from public regarding dust nuisance within TM38 Fill Bank and was forwarded to ET by email on 06 October 2021 for investigation. | <p>Refer to the ET site investigation on 12 October 2021, no defective observation related to dust emission was recorded during the investigation.</p> <p>Details of Action(s) Taken by the Contactor:</p> <ol style="list-style-type: none"> 1. Regular water spraying by water lorries is provided for dust suppression inside the Fill Bank. <p>Regular cleaning at the site haul road is provided to minimize the dust emission.</p> | Closed |

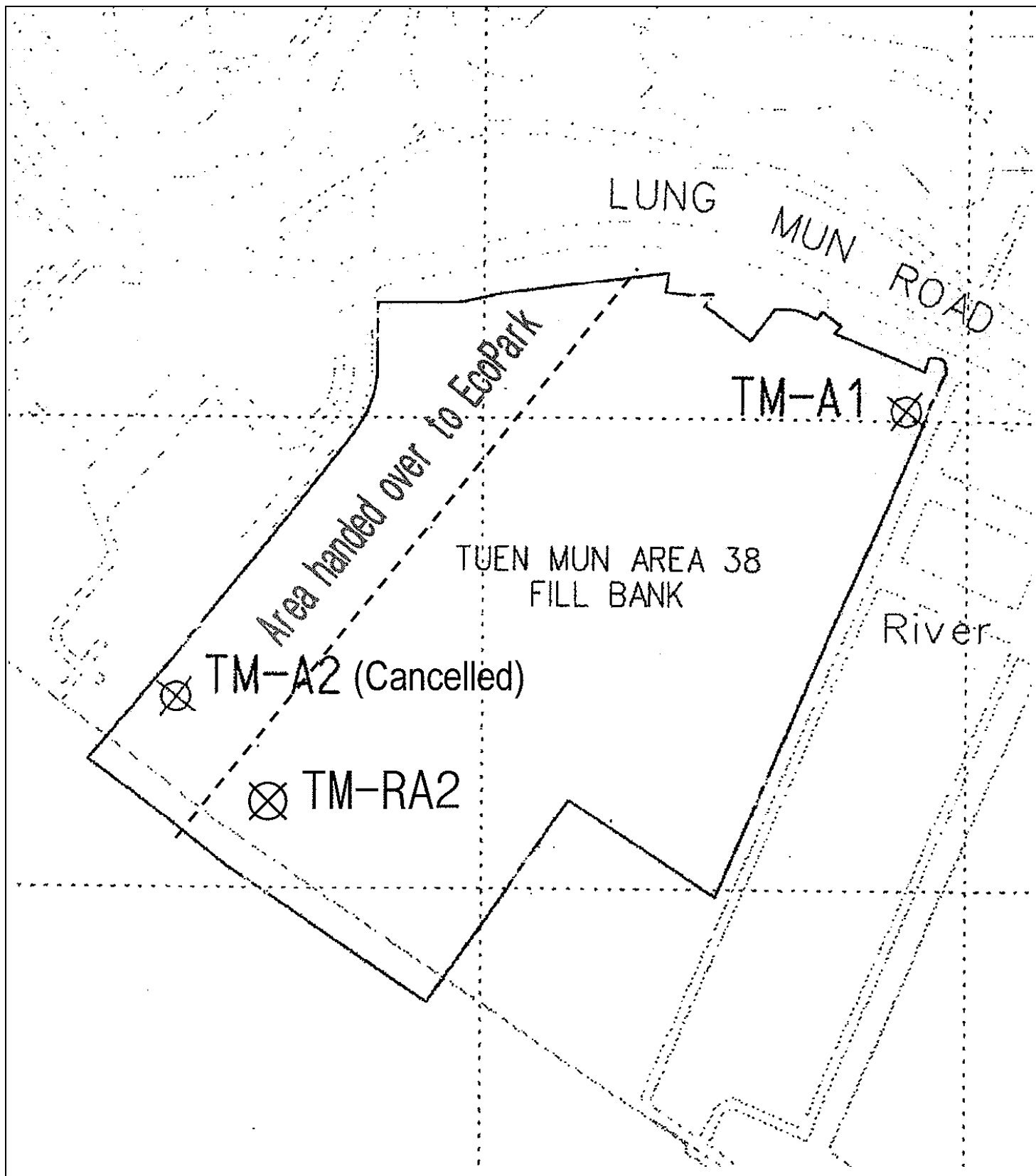
| | | | | | |
|-----|----------------------------|--------------|--|---|--------|
| 005 | Tuen Mun Area 38 Fill Bank | 28 June 2022 | <p>A complaint was received on 28 June 2022, which was forwarded to ET by email on 28 June 2022 for investigation, from public against "土木工程署屯門第 38 區填料庫經常發出異味，致現場的空氣及環境被受污染，土木工程拓展署難辭其咎，環保署亦應就現場大量大型車輛造成的空氣污染作出跟進。"</p> | <p>Refer to the ET site investigation on 30 June 2022, no defective observation related to dust emission was recorded during the investigation</p> <p>Details of Action(s) Taken by the Contactor:</p> <ol style="list-style-type: none"> 1. Regular water spraying by water lorries is provided for dust suppression inside the Fill Bank; 2. Regular cleaning at the site haul road is provided to minimize the dust emission; 3. Site vehicles are washed to remove any dusty materials from their bodies and wheels by using high pressure water jet manually at the entrance of work site before leaving; | Closed |
| 006 | Tuen Mun Area 38 Fill Bank | 05 July 2022 | <p>A complaint was received on 05 July 2022, which was forwarded to ET by email on 15 July 2022 for investigation, from an environmental group against "為何 TM38 區之斜坡不同蓋上帆布" .</p> | <p>Refer to the ET site investigation on 14 July 2022, no defective observation related to dust emission was recorded during the investigation.</p> <p>Details of Action(s) Taken by the Contactor:</p> <ol style="list-style-type: none"> 1. Regular water spraying by water lorries is provided for dust suppression inside the Fill Bank. 2. Regular cleaning at the site haul road is provided to minimize the dust emission. | Closed |

| | | | | | |
|-----|----------------------------|-------------------|--|--|--------|
| 007 | Tuen Mun Area 38 Fill Bank | 30 September 2022 | <p>A complaint was received on 30 September 2022, which was forwarded to ET by email on 03 October 2022 for investigation, against "In recent days, we found that there was significant dust emission from the fill bank. As you are aware that we need to conduct RSP and TSP monitoring at the site boundary with very tight limits. We worry that these situations might affect our measurement. Please see the videos attached. They are taken on 21 Sept and one on 26 Sept. Grateful if you could investigate the cases and ensure dust is properly controlled."</p> | <p>The video provided by the complainant showed that there was serious dust emission in 3RS collection area of public fill. Based on this situation, mitigation measures implemented in TM38 Fill Bank were reviewed and enhanced to avoid dust emission. A joint site inspection and meeting was carried out on 06 October 2022 to discuss the dust emission at TM38 Fill Bank. The location of 3RS and discharge point would be inspected in every weekly environmental audit. The status of 3RS location would be recorded to monthly EM&A report.</p> <p>Details of Action(s) Taken by the Contactor:</p> <ol style="list-style-type: none"> 1. Increasing the frequency of water spraying by water lorries inside the Fill Bank. 2. Setting up water spraying machine in the 3RS area 3. Regular cleaning at the site haul road is provided to minimize the dust emission. | Closed |
| 008 | Tuen Mun Area 38 Fill Bank | 25 January 2024 | <p>A complaint was received on 25 January 2024, which was forwarded to ET by email on 26 January 2024 for investigation, from public against dust nuisance and lack of lighting facilities "投訴屯門 38 區填料庫，沙塵四起，要求加強灑水。要求增加石屎路。夜間增加照明。"</p> | <p>Refer to the ET site investigation on 14 July 2022, no defective observation related to dust emission was recorded during the investigation.</p> <p>Details of Action(s) Taken by the Contactor:</p> <ol style="list-style-type: none"> 1. Increasing the frequency of water spraying by water lorries to suppress dust emission inside the Fill Bank. 2. Regular cleaning at the site haul road is provided to minimize the dust emission. | Closed |

| | | | | | |
|-----|----------------------------|-------------------------------------|---|---|--------|
| 009 | Tuen Mun Area 38 Fill Bank | 30 September 2024 & 02 October 2024 | A complaint was received on 30 September 2024 and 02 October 2024, which was forwarded to ET by email on 02 October 2024 for investigation, from public against dust nuisance "投訴屯門 38,泥塵大,要求增加水車灑水。" | <p>The Contractor has implemented control measures to reduce dust emission to the environment and no defective observation related to dust emission was recorded during the site investigation on 03 October 2024. No exceedance was found on recent air quality monitoring results. Therefore, there is no direct evidence showing that the complaint is likely related to the TM38 fill bank project. Although this complaint was invalid, considering the complaint was targeted to TM 38 Fill Bank, the Contractor will take more effort on the dust suppression to avoid pollutants to the nearby environment.</p> <p>Details of Action(s) Taken by the Contactor:</p> <ol style="list-style-type: none"> 1. Increasing frequency of water spraying by water lorries from four times per day to five times per day, to suppress dust emission inside the Fill Bank 2. Regular cleaning at the site haul road is provided to minimize the dust emission. 3. Site vehicles are washed to remove any dusty materials by using high pressure water jet manually at the entrance of work site before leaving | Closed |
| 010 | Tuen Mun Area 38 Fill Bank | 02 October 2024 | A complaint referred by 1823 was received on 02 October 2024, which was forwarded to ET by email on 02 October 2024 for investigation, from public against dust nuisance "投訴屯門38 泥尾,泥塵大,要求增加水車灑水" | <p>The Contractor has implemented control measures to reduce dust emission to the environment and no defective observation related to dust emission was recorded during the site investigation on 03 October 2024. No exceedance was found on recent air quality monitoring results. Therefore, there is no direct evidence showing that the complaint is likely related to the TM38 fill bank project. Although this complaint was invalid, considering the complaint was targeted to TM 38 Fill Bank, the Contractor will take more effort on the dust suppression to avoid pollutants to the nearby environment.</p> <p>Details of Action(s) Taken by the Contactor:</p> <ol style="list-style-type: none"> 1. Increasing frequency of water spraying by water lorries from four times per day to five times per day, to suppress dust emission inside the Fill Bank 2. Regular cleaning at the site haul road is provided to minimize the dust emission. 3. Site vehicles are washed to remove any dusty materials by using high pressure water jet manually at the entrance of work site before leaving | Closed |

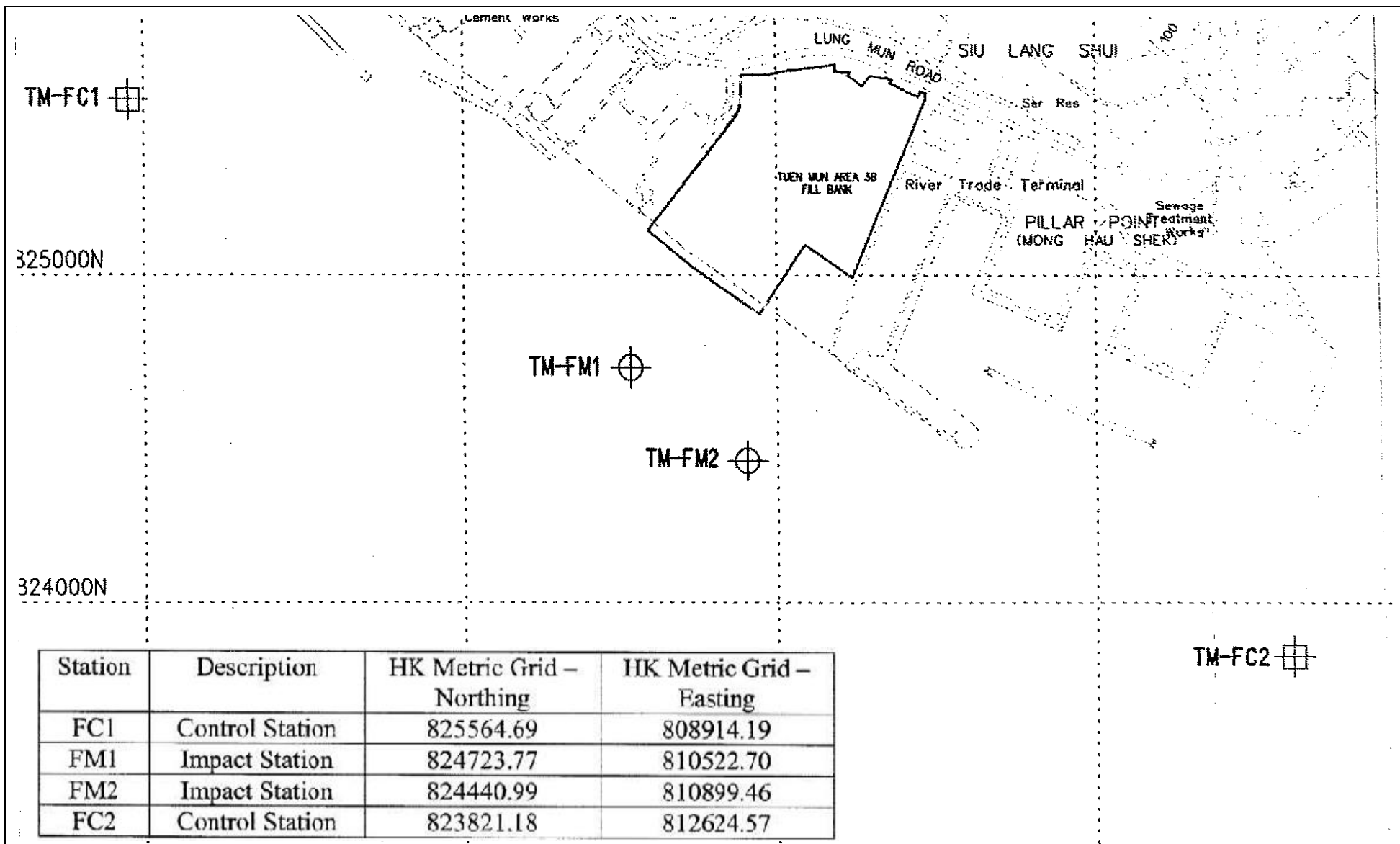
| | | | | | |
|-----|----------------------------|-----------------|---|--|--------|
| 011 | Tuen Mun Area 38 Fill Bank | 21 October 2024 | <p>A complaint was received by CEDD on 21 October 2024, which was forwarded to the Contractor and the ET by email on 28 October 2024 for investigation, from public against dust nuisance "屯門38 泥尾泥塵大，要求加密水車淋水"</p> | <p>The Contractor has implemented control measures to reduce dust emission to the environment and no defective observation related to dust emission was recorded during the site investigation on 30 October 2024. No exceedance was found on recent air quality monitoring results. Therefore, there is no direct evidence showing that the complaint is likely related to the TM38 fill bank project. Although this complaint was invalid, considering the complaint was targeted to TM 38 Fill Bank, the Contractor will take more effort on the dust suppression to avoid pollutants to the nearby environment.</p> <p>Details of Action(s) Taken by the Contractor:</p> <ol style="list-style-type: none"> 1. Increasing frequency of water spraying by water lorries from four times per day to five times per day, to suppress dust emission inside the Fill Bank 2. Regular cleaning at the site haul road is provided to minimize the dust emission. 3. Site vehicles are washed to remove any dusty materials by using high pressure water jet manually at the entrance of work site before leaving | Closed |
|-----|----------------------------|-----------------|---|--|--------|

Figures



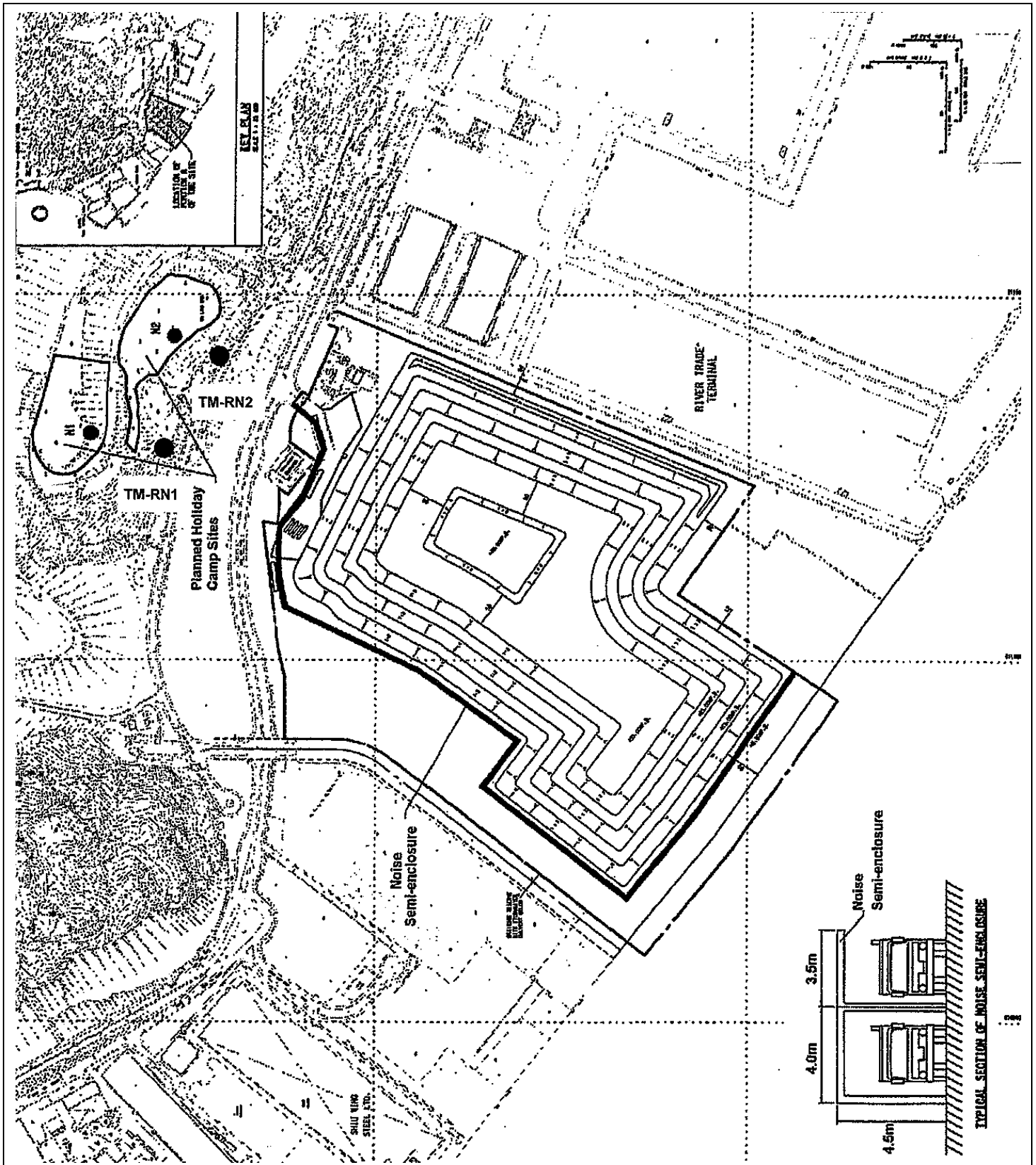
Contract No. CV/2023/10
 Handling of Surplus Public Fill (2024-2027)

Figure 1
 Locations of Air Quality Monitoring Stations –
 Tuen Mun Area 38 Fill Bank



Contract No. CV/2023/10
 Handling of Surplus Public Fill (2024-2027)

Figure 2
 Locations of Water Quality Monitoring Station –
 Tuen Mun Area 38 Fill Bank



Contract No. CV/2023/10
 Handling of Surplus Public Fill (2024 - 2027)

Figure 3
 Locations of Noise Monitoring Stations –
 Tuen Mun Area 38 Fill Bank



東業德動測試顧問有限公司
 ETS-TESTCONSULT LIMITED