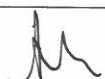


**ATAL-Degremont-China Harbour Joint Venture**

**Contract No. DC/2013/10**  
**Design, Build and Operate San Wai**  
**Sewage Treatment Works**

**Quarterly Operational Phase**  
**EM&A Report for June to August 2021**

[09/2022]

	Name	Signature
Prepared & Checked:	Alex Chan	
Reviewed & Certified:	Y W Fung	

Version:	Rev. 0	Date: 6 September 2022
----------	--------	------------------------

**Disclaimer**

The information contained in this report is, to the best of our knowledge, correct at the time of printing. The interpretation and recommendations in the report are based on our experience, using reasonable professional skill and judgment, and based upon the information that was available to us. These interpretations and recommendations are not necessarily relevant to any aspect outside the restricted requirements of our brief. This report has been prepared for the sole and specific use of our client and AECOM Environment accepts no responsibility for its use by others.

This report is copyright and may not be reproduced in whole or in part without prior written permission.



Drainage Services Department  
Sewage Services Branch  
Harbour Area Treatment Scheme  
5/F, Western Magistracy  
2A Po Fu Lam Road  
Hong Kong

Your reference:

Our reference: HKDSD203/50/108309

Date: 25 October 2022

Attention: Mr Paul Law

**BY EMAIL & POST**  
**(email: psclaw@dsd.gov.hk)**

Dear Sirs

Agreement No. HATS 02/2016  
Services for Independent Environmental Checker (IEC) for  
Contract No. DC/2013/10 – Design, Build and Operate San Wai Sewage Treatment Works – Phase 1  
Quarterly Operational Phase Environmental Monitoring and Audit Report (June – August 2021)

We refer to email on 19 September 2022 from AECOM Asia Co. Ltd. attaching the Quarterly Operational Phase Environmental Monitoring and Audit Report (June – August 2021).

We have no comments and hereby verify the Quarterly Operational Phase Environmental Monitoring and Audit Report (June – August 2021) in accordance with Clause 5.4 of the Environmental Permit no. EP-464/2013.

Should you have any queries, please do not hesitate to contact the undersigned or our Mr Ricky Lau on 2618 2831.

Yours faithfully  
ANewR CONSULTING LIMITED

James Choi  
Independent Environmental Checker

CPSJ/LCCR/lsmt

cc AECOM – Mr CY Hung (email: cy.hung@swstw-aecon.com)  
AECOM – Mr YW Fung (email: yw.fung@aecon.com)

## CONTENT

	Page
EXECUTIVE SUMMARY	3
1 INTRODUCTION	4
1.1 Background	4
2 ENVIRONMENTAL MONITORING REQUIREMENT	5
2.1 Air quality monitoring	5
2.2 Water Quality monitoring	5
2.3 Toxicity Testing	6
3 MONITORING RESULT	7
3.1 Air quality monitoring	7
3.2 Water quality monitoring	8
3.3 Toxicity Testing	9
4 LANDSCAPE AND VISUAL AUDITING	10
4.1 Monitoring Requirement	10
4.2 Result and Recommendations	10
5 WASTE MANAGEMENT FOR SLUDGE	10
6 ENVIRONMENTAL COMPLAINT, NOTIFICATION OF SUMMONS AND SUCCESSFUL PROSECUTION	10
7 CONCLUSIONS	10

## List of Tables

Table 2.1	Parameter and Frequency of Odour monitoring
Table 2.2	Proposed Monitoring Locations for Odour Sampling and H <sub>2</sub> S Measurement
Table 2.3	Marine Water Quality Monitoring Parameters, Frequency and Duration
Table 2.4	Methodology for Toxicity Testing
Table 3.1	Summary of Odour Monitoring Results for Site boundary / ASRs
Table 3.2	Summary of Odour Monitoring Results for Exhaust of Deodourisation Unit
Table 3.3	Summary of Monitoring Results and criteria of WQOs
Table 3.4	Monitoring Result of Effluent Quality Monitoring

## Figures

Figure 1.1	Site Layout Plan
Figure 2.1	Locations of Air Sensitive Receivers
Figure 2.2	Site Boundary Downwind Location of Exhaust Point of the Deodourisation Unit
Figure 2.3	Locations of Odour Patrol
Figure 3.1	Locations of Marine Water Quality Monitoring
Figure 3.2	Locations of Effluent Sampling

## List of Appendices

Appendix A	Project Organization Structure
Appendix B	Action and Limit Levels
Appendix C	Event and Action Plan

## EXECUTIVE SUMMARY

In accordance with the Environmental Monitoring and Audit Manual (EM&A Manual) and the Environmental Permit (EP-464/2013) for the Contract No. DC/2013/10 - Design, Build and Operate San Wai Sewage Treatment Works – Stage 1 (the Project), air quality and water quality monitoring are required during operational phase of the Project. The purpose of operational phase monitoring is to confirm the predictions of mitigation measures advised in the EIA report.

As confirmed by the Contractor, all major construction activities of the Project has been completed in May 2021. The Operational Phase of the Project commenced in March 2021. This Quarterly Operational Phase Monitoring Report summarizes monitoring events carried out during period from 1 June 2021 to 31 August 2021. There was a total of ten(10) monitoring events carried out during the reporting period. The exact dates of monitoring carried out during the reporting period are tabulated below:

Monitoring Event	Date
Odour sampling	16 & 17 July 2021
H <sub>2</sub> S measurement	16 & 17 July 2021
Odour Patrol	29 June 2021, 16 July 2021 & 24 August 2021
Marine Water Quality Monitoring	24 June 2021
Effluent Quality Monitoring	23 June 2021
Toxicity Testing	23 June 2021
Landscape and Visual Auditing	29 July 2021 & 20 August 2021

### Monitoring Summary

- No Action and Limit Levels exceedance of odour sampling and H<sub>2</sub>S measurement was recorded in the reporting period.
- Odour intensity were recorded from 0 to 1 during odour patrols in the reporting period.
- No non-compliance of marine water and effluent quality monitoring was recorded in the reporting period.
- Toxicity test results were complied with the target levels in reporting period.
- No non-compliance of landscape and visual auditing was recorded in the reporting period.
- No environmental complaint, notification of summons and successful prosecution was received in the reporting period.

## 1 INTRODUCTION

### 1.1 Background

- 1.1.1. This Quarterly Operational Phase Environmental Monitoring and Audit (EM&A) Report is prepared for Contract No. DC/2013/10 - Design, Build and Operate San Wai Sewage Treatment Works – Stage 1 (the Project). The Project was awarded to ATAL-Degremont-China Harbor Joint Venture (ADCJV) by the Drainage Services Department (DSD). AECOM Asia Co. Ltd. was appointed as the Environmental Team (ET) by ADCJV to implement the operational phase EM&A program in compliance with the EP and the EM&A Manuals.
- 1.1.2. The project involves expansion of the preliminary treatment works at San Wai STW from 164,000 m<sup>3</sup>/d to 200,000 m<sup>3</sup>/d Average Dry Weather Flow, upgrading the preliminary treatment level to CEPT and adding centralized disinfection. The site layout plan is shown in **Figure1.1**.
- 1.1.3. According to the Section 25 of the Particular Specification (PS) and the Environmental Permit No. EP-464/2013, an EM&A programme should be implemented in accordance with the procedures and requirements in the Environmental Monitoring & Audit Manual (EM&A Manual) of the approved EIA report (Registration No. AEIAR-072/2003). The EM&A Manual and EP provide guidelines for the Operational Phase Monitoring Reports and for preparation of the Operational Phase Monitoring Reports.
- 1.1.4. The operational phase of the Project was commenced in March 2021.
- 1.1.5. As part of the project EM&A program, baseline monitoring was conducted during July 2019 to April 2020 to determine the ambient environmental conditions before the Project commence operation works.
- 1.1.6. This is the 1<sup>st</sup> Quarterly Operational Phase Environmental Monitoring and Audit (EM&A) Report for the Project which summaries the audit findings of the EM&A programme during the reporting period from 1 June 2021 to 31 August 2021.

## 2 ENVIRONMENTAL MONITORING REQUIREMENT

### 2.1 Air quality monitoring

- 2.1.1 15-min Hydrogen Sulphide (H<sub>2</sub>S) concentration (in parts per million) was measured at the site boundary, nearby air sensitive receivers and the exhaust of deodourisation units. Meteorological conditions including temperature, wind speed, wind direction and relative humidity was measured at the time of the monitoring.
- 2.1.2 Approximately 60 litres of gas sample was collected for a period of 15-mins at the site boundary, nearby air sensitive receivers and the exhaust of deodourisation unit in order to provide sufficient volume for olfactometric analysis. Odour concentration was expressed as OU/m<sup>3</sup>.
- 2.1.3 Apart from odour monitoring, regular odour patrolling in the vicinity of the STW was also conducted in a monthly interval during the operational phase to ensure that prompt action would be taken whenever any excessive odour emissions area detected.
- 2.1.4 The monitoring frequency of each odour parameters are listed in the **Table 2.1**.

**Table 2.1 Parameter and Frequency of Odour monitoring**

Monitoring Parameter	Frequency
Odour Panel	Quarterly
H <sub>2</sub> S Measurement	
Odour Patrol	Monthly

- 2.1.5 Odour sampling and H<sub>2</sub>S measurements were undertaken at the proposed monitoring locations, the proposed monitoring locations were determined by the ET Leader and agreed with ER and EPD as the request of the Section 2.5.1.25 and 2.5.1.26 of the EM&A Manual. The monitoring locations are presented in **Table 2.2** and shown in **Figure 2.1** and **Figure 2.2**.

**Table 2.2 Proposed Monitoring Locations for Odour Sampling and H<sub>2</sub>S Measurement**

Identification of Monitoring Location	Description
ASR1a	晉榮貨櫃服務有限公司
ASR2b	永康貨櫃服務有限公司
Site Boundary, SB1 <sup>*1</sup>	Site boundary
OD1 <sup>*2</sup>	Downwind of the exhaust point of deodourisation units
OD2 <sup>*2</sup>	

<sup>\*1</sup> According to Sections 2.5.1.25 of the EM&A Manual, the H<sub>2</sub>S measurement shall be undertaken at the site boundary downwind of the exhaust point of the deodourisation unit and the covered odour source. **Figure 2.2** shown the locations of the site boundary downwind of the exhaust point of the deodourisation unit.

<sup>\*2</sup> According to Sections 2.5.1.26 of the EM&A Manual, H<sub>2</sub>S measurement shall be conducted at the exhaust point of the deodorization unit (OD1&2). Considered the situation of the COVID-19, the ET Leader proposed to conduct only the H<sub>2</sub>S measurement at OD1&2. The proposal for this change was approved by the EPD.

- 2.1.6 The Action and Limit Levels established from the baseline monitoring are shown in the **Appendix B**.

### 2.2 Water Quality monitoring

#### Marine Water Quality Monitoring

- 2.2.1 Marine water samples and in situ measurement should be collected from all the sampling stations on 8 occasions at intervals of approximately 3 months during the operational phase of the Project. On each occasion, marine water samples should be collected every 2 hours for a 12-hour duration. When significant change in the marine water quality are detected, the monitoring frequency should be increase as necessary until the cause for the change is identified.
- 2.2.2 **Table 2.3** summarises the monitoring parameters, frequency and duration of marine water quality monitoring, as request in Section 4.5.1.13 of the EM&A manual.

**Table 2.3 Marine Water Quality Monitoring Parameters, Frequency and Duration**

Monitoring Stations	Parameters, unit	Frequency	Duration
W1 to W8	<b>In-situ Measurement:</b> <ul style="list-style-type: none"> <li>• Temperature, °C</li> <li>• Salinity, ppt</li> <li>• DO, mg/L</li> <li>• DO Saturation, %</li> <li>• Turbidity, NTU</li> </ul> <b>Laboratory Analysis:</b> <ul style="list-style-type: none"> <li>• SS, mg/L</li> <li>• TIN, mg/L</li> <li>• Unionised ammonia, mg/L</li> <li>• BOD<sub>5</sub>, mg/L</li> <li>• <i>E. coli</i>, cfu/100mL</li> <li>• Cadmium, Copper, Nickel, Lead, Chromium, Mercury and Zinc, µg/L</li> <li>• PAHs &amp; PCBs, µg/L</li> </ul>	8 occasions at intervals of approximately 3 months during the operation phase of the upgraded and expanded San Wai STW.	On each occasion, marine water samples will be collected every 2 hours for a 12-hour duration.

2.2.3 Marine water quality monitoring was undertaken at the proposed monitoring stations set out in the Section 4.5.1.6 of EM&A Manual. The proposed marine water quality stations were shown in **Figure 3.1**.

#### Effluent Quality Monitoring

2.2.4 As recommended by the EM&A Manual, the effluent quality monitoring was included the follows parameters:

- pH
- SS (mg/L)
- TIN (µg/L)
- NH<sub>3</sub>-N (mg/L)
- *E. coli* (cfu/100mL)
- PAHs & PCBs (µg/L)
- Cadmium, Copper, Nickel, Lead, Chromium, Mercury and Zinc (µg/L)

2.2.5 Effluent quality monitoring was carried out at the effluent outlet of the San Wai STW as shown in **Figure 3.2**.

## **2.3 Toxicity Testing**

2.3.1 In accordance with Section 4.6.1.2 of the EM&A Manual, toxicity testing shall be carried out on 8 occasions at intervals of approximately 3 months during the operational phase of the Project for two marine species. One of the two marine species shall be selected from local environment. The representative species that will be chosen for testing and technical details of the testing method should be agreed and approved by the EPD prior to the operation of the sewage treatment works. The testing method was approved by the EPD on 25 July 2022.

**Table 2.4 Methodology for Toxicity Testing**

Types of Respective Species	Diatom ( <i>Skeletonema costatum</i> )	Barnacle larvae ( <i>Balanus Amphitrite</i> )
Toxicity Testing	Chronic Toxicity	Acute Toxicity
Time requirement	7 days	48 hours
Toxicity testing methods	NOEC in 7-day diatom growth inhibition test	LC50 in 48-hr barnacle larvae survival test
Target Levels Proposed in Method Statement	≥0.51%	≥7.10%



### 3 MONITORING RESULT

#### 3.1 Air quality monitoring

##### Odour Sampling and H<sub>2</sub>S Measurement

- 3.1.1 The odour and H<sub>2</sub>S measurement at the proposed locations was carried out on 16 July 2021 at 10:00 to 17 July 2021 at 09:00. Measurements of odour and H<sub>2</sub>S were conducted in parallel (within a 3-hour period) at the sources and receivers. A total of eight sets of data were obtained from samples collected over different periods of a 24-hour cycle day. The odour monitoring results for site boundary/ ASR and dedourisation unit are summarized in **Table 3.1** and **Table 3.2**.

**Table 3.1 Summary of Odour Monitoring Results for Site boundary / ASRs**

Round	Date	Location	Averaged H <sub>2</sub> S Concentration, ppm	Averaged Odour Concentration, OU/m <sup>3</sup>	Action Level, ppm	Limit Level, ppm
Round 1 to 8	16 – 17 July 2021	SB1	0.0043	19.0	0.0109	0.0109
		ASR1a	0.0034	17.4	0.0100	0.0100
		ASR1b	0.0035	16.1	0.0157	0.0157

**Table 3.2 Summary of Odour Monitoring Results for Exhaust of Deodourisation Unit**

Round	Date	Location	Averaged H <sub>2</sub> S Concentration, ppm	Expressed as µg/s	Action Level, µg/s	Limit Level, µg/s
Round 1 to 8	16 – 17 July 2021	OD1	0.0079	124.6	139	277
		OD2	0.0082	87.2		

- 3.1.2 No exceedance of Action and Limit Levels was recorded in the reporting period.
- 3.1.3 During the sampling period, meteorological data including humidity, wind speed and temperature was recorded, and wind direction was obtained from the Hong Kong Observatory's Lau Fu Shan Weather Station.
- 3.1.4 After the analysis, the measurement results indicated that there was no direct relation between odour and H<sub>2</sub>S at all proposed locations. H<sub>2</sub>S levels were generally low at the SB1 and ASRs and it was confirmed that H<sub>2</sub>S was not the major contributor to odour, since the H<sub>2</sub>S level did not change with the odour level. It was suspected that other sources of odour and H<sub>2</sub>S, such as the container yard and vehicle emission etc, also affected the SB1 and ASRs.

##### Odour Patrol

- 3.1.5 The odour patrols were carried out on 29 June 2021, 16 July 2021 and 24 August 2021. The observer was patrolling and sniffing around the facilities to detect the any odour, as required by the EM&A Manual.
- 3.1.6 During the odour patrols, the odour intensity were recorded from 0 (not detectable) to 1 (slight) in the reporting period.

### 3.2 Water quality monitoring

#### Marine Water Quality Monitoring

3.2.1 The marine water quality monitoring was conducted on 24 June 2021 in the reporting period. The summary of monitoring results and criteria of Water Quality Objectives (WQOs) are summarized in Table 3.3.

**Table 3.3 Summary of Monitoring Results and criteria of WQOs**

Parameter	Average		Minimum		Maximum		Water Quality Objectives (in marine waters)
	Result	Baseline	Result	Baseline	Result	Baseline	
Temp. (°C)	24.4	24.1	24.1	18.8	25.0	29.9	Change due to waste discharge < 2 °C
Salinity (ppt)	25.4	25.5	20.8	4.3	28.1	33.1	Change due to waste discharge < 10% of natural ambient level
pH	7.30	7.95	7.21	7.64	7.50	8.38	6.5 – 8.5 and change due to waste discharge < 0.2
DO Depth Average (mg/L)	4.67	6.46	4.32	2.96	5.09	10.14	Depth averaged: > 4 mg/L for 90% samples
Turbidity (NTU)	5.2	7.9	4.1	2.3	6.6	31.9	Not available
SS (mg/L)	6.3	7.6	3.0	<2.5	25.0	29.0	< 30% increase in the natural ambient level
Cadmium (µg/L)	<0.5	0.5	<0.5	<0.5	<0.5	4.2	Not available
Copper (µg/L)	4.3	6.0	2.0	1.0	12.0	119.0	Not available
Nickel (µg/L)	2.0	1.9	1.0	<1.0	7.0	36.0	Not available
Lead (µg/L)	1.0	1.8	<1.0	<1.0	7.0	166.0	Not available
Mercury (µg/L)	0.5	0.6	<0.5	<0.5	1.1	44.0	Not available
Chromium (µg/L)	1.0	1.3	<1.0	<1.0	5.0	50.0	Not available
Zinc (µg/L)	18.6	25.8	5.0	3.0	92.0	871.0	Not available
TIN (mg/L)	0.83	1.20	0.70	0.27	1.29	2.51	< 0.5 mg/L (annual mean depth average)
NH <sub>3</sub> -N (mg/L)	0.140	0.004	0.090	0.001	0.630	0.031	Not available
BOD <sub>5</sub> (mg/L)	<2.0	2.6	<2.0	<2.0	<2.0	7.0	Not available
<i>E. coli</i> (cfu/100mL)	38.7	60.3	6.0	<1.0	194.0	980.0	< 610 per 100mL (annual geometric mean)
PAHs (µg/L)	<0.1	<0.1	<0.1	<0.1	<0.1	<0.1	Not available
PCBs (µg/L)	<0.02	<0.02	<0.02	<0.02	<0.02	<0.02	Not available

3.2.2 The weather condition during the monitoring was cloudy. Sea conditions for the majority of monitoring days was moderate. No major water pollution source and no marine construction activities in the vicinity of the stations, which might affect the results was observed during the marine water quality monitoring.

3.2.3 The total inorganic nitrogen (TIN) results measured at all monitoring stations were exceeded WQOs criteria in the reporting period. With reviewing the baseline data in Table 3.3, except from minimum, the measured data in the reporting period was lower than baseline condition. Since the TIN concentration in baseline condition was higher than the WQOs, and the TIN concentration recorded in the reporting period was lower than the baseline condition, so the TIN concentration recorded in the reporting period was considered acceptable.

3.2.4 Since the TIN concentration recorded during the monitoring was lower than the baseline condition, so no non-compliance of the marine water monitoring was recorded in reporting period.

### Effluent Quality Monitoring

3.2.5 The effluent monitoring results during the reporting period is summarized in **Table 3.4**.

**Table 3.4 Monitoring Result of Effluent Quality Monitoring**

Parameter	Result	Limitation on Discharge
pH	7.2	Not available
BOD <sub>5</sub> (mg/L)	23	180
SS (mg/L)	29	120
TIN (µg/L)	26	Not available
NH <sub>3</sub> -N (mg/L)	26	Not available
E. coli (cfu/100mL) (Grab sample)	9,600	300,000
Cadmium (µg/L)	<0.5	Not available
Copper (µg/L)	9	Not available
Nickel (µg/L)	19	Not available
Lead (µg/L)	1	Not available
Mercury (µg/L)	<0.5	Not available
Chromium (µg/L)	4	Not available
PCBs (µg/L)	<0.02	<0.02
PAHs (µg/L)	<0.1	<0.1

3.2.6 No non-compliance of effluent quality was recorded in the reporting period.

### **3.3 Toxicity Testing**

3.3.1 The toxicity testing was conducted on 24 June 2021.

3.3.2 The NOEC in 7-day diatom growth inhibition test for Diatom was 2.5%

3.3.3 The LC50 in 48-hr barnacle larvae survival test for Barnacle larvae was 28.2%

3.3.4 The NOEC and LC50 monitoring results were complied with the target levels proposed in the method statement, no non-compliance was recorded in the reporting period.

## **4 LANDSCAPE AND VISUAL AUDITING**

### **4.1 Monitoring Requirement**

- 4.1.1 In accordance with Section 6.4 of the EM&A Manual, a competent landscape architect should be employed by the Contractor for the implementation of landscape construction works and subsequent maintenance operations during the 12 months establishment period. The establishment works should be undertaken throughout the Contractor's first year maintenance period which will be within the first operational year of the Project.
- 4.1.2 All measures undertaken by both Contractor and the Landscape Contractor during the first year of the operational phase should be audited by a Landscape Architect, as a member of the ET, on a regular basis to ensure compliance with the intended aims of the measures. Site inspections should be undertaken at least once every two months during the operational phase.

### **4.2 Result and Recommendations**

- 4.2.1 Landscape and visual auditing was conducted by a Landscape Architect on 29 July and 20 August 2021 during the reporting period.
- 4.2.2 No non-compliance of landscape and visual auditing was identified in the reporting period.

## **5 WASTE MANAGEMENT FOR SLUDGE**

- 5.1.1 All dewatered sludge from the operation stage of the Project has been transported to the Sludge Treatment Facility (STF) for disposal, in accordance with the admission tickets obtained from VW-VES(HK) Ltd, the contractor of EPD operating the STF. When the CEPT sludge reception and dilution facilities in Shatin Sewage Treatment Works are commissioned, part or all of the dewatered sludge will be transported to Shatin Sewage Treatment Works for digestion and / or co-digestion with food waste, while STF will remain to be the default location of disposal.

## **6 ENVIRONMENTAL COMPLAINT, NOTIFICATION OF SUMMONS AND SUCCESSFUL PROSECUTION**

- 6.1.1 No environmental complaint, notification of summons and successful prosecution was received in the reporting period.

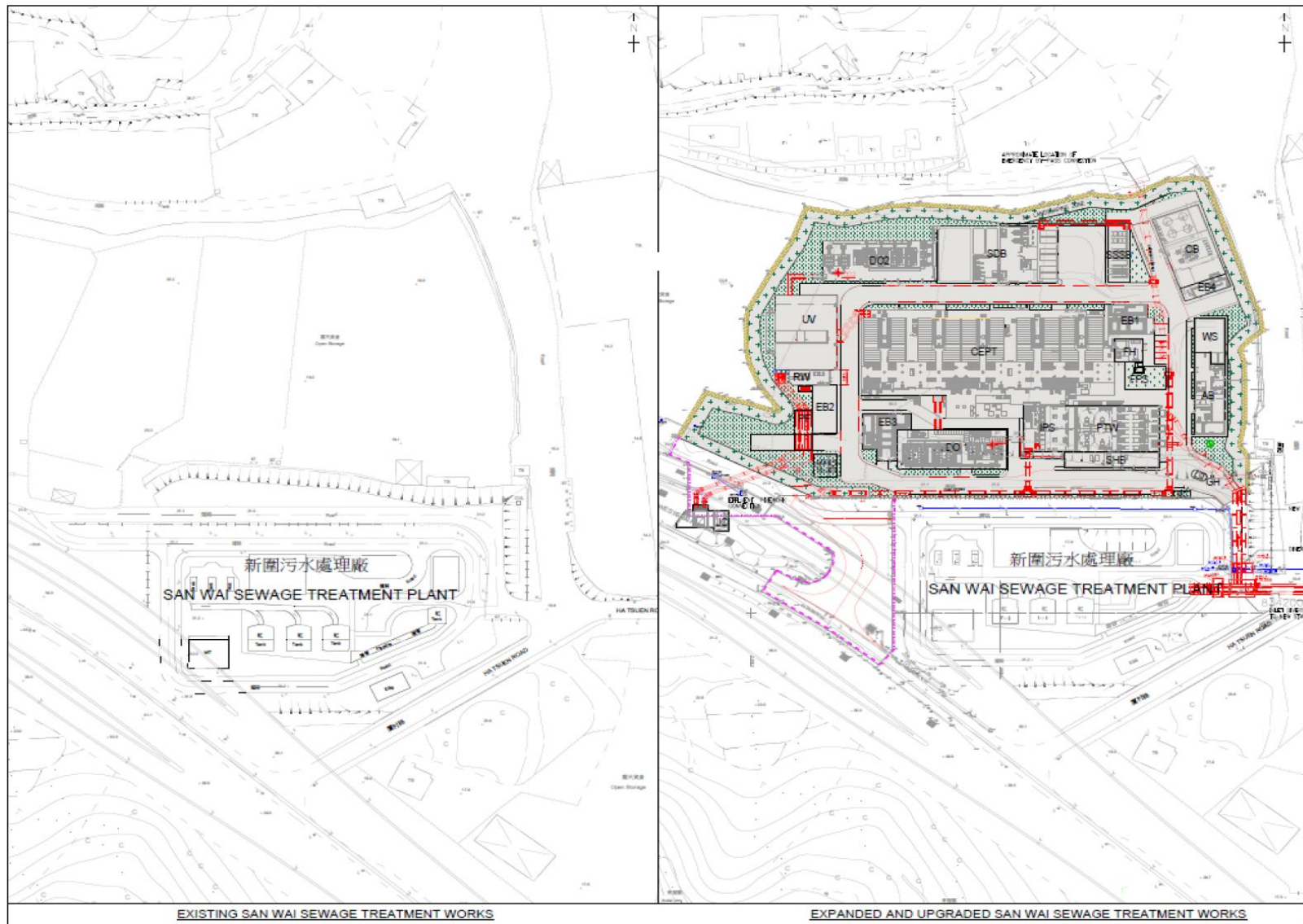
## **7 CONCLUSIONS**

- 7.1.1 No Action and Limit Levels exceedance of odour sampling and H<sub>2</sub>S measurement was recorded in the reporting period.
- 7.1.2 Odour intensity were recorded from 0 to 1 during odour patrolling in the reporting period.
- 7.1.3 No non-compliance of marine water and effluent monitoring was recorded in the reporting period.
- 7.1.4 Toxicity testing results were complied with the target levels in reporting period.
- 7.1.5 No non-compliance of landscape and visual auditing was identified in the reporting period.
- 7.1.6 No environmental complaint, notification of summons and successful prosecution was received in the reporting period.

---

## FIGURES

---



Contract No. DC/2013/10: Design, Build and Operate  
 San Wai Sewage Treatment Works –  
 Operational Phase Monitoring

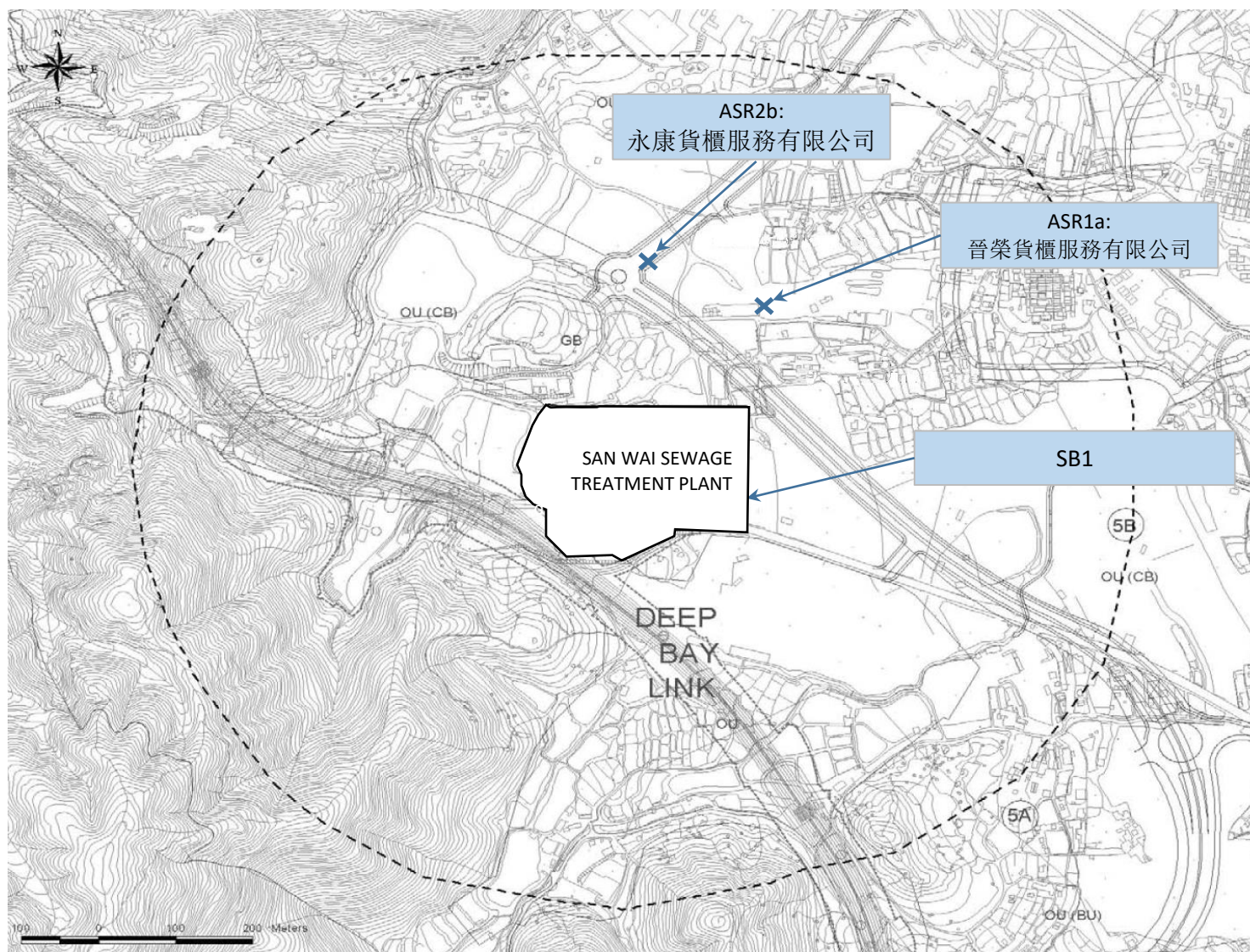
### Site Layout Plan

**AECOM**

Date: July 2021

Figure 1.1





Contract No. DC/2013/10: Design, Build and Operate  
 San Wai Sewage Treatment Works –  
 Operational Phase Monitoring

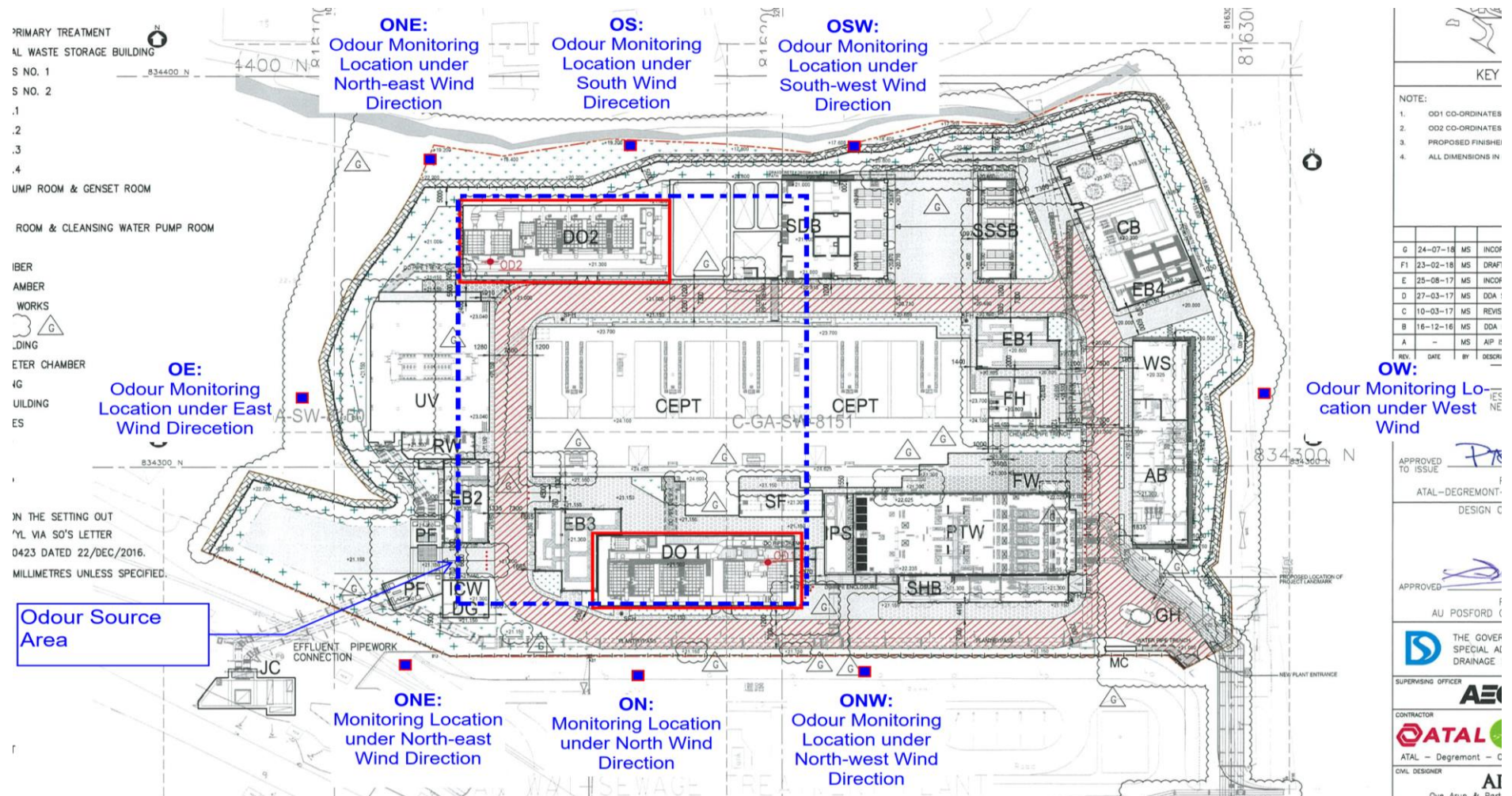
### Locations of Odour Monitoring Stations

**AECOM**

Date: July 2021

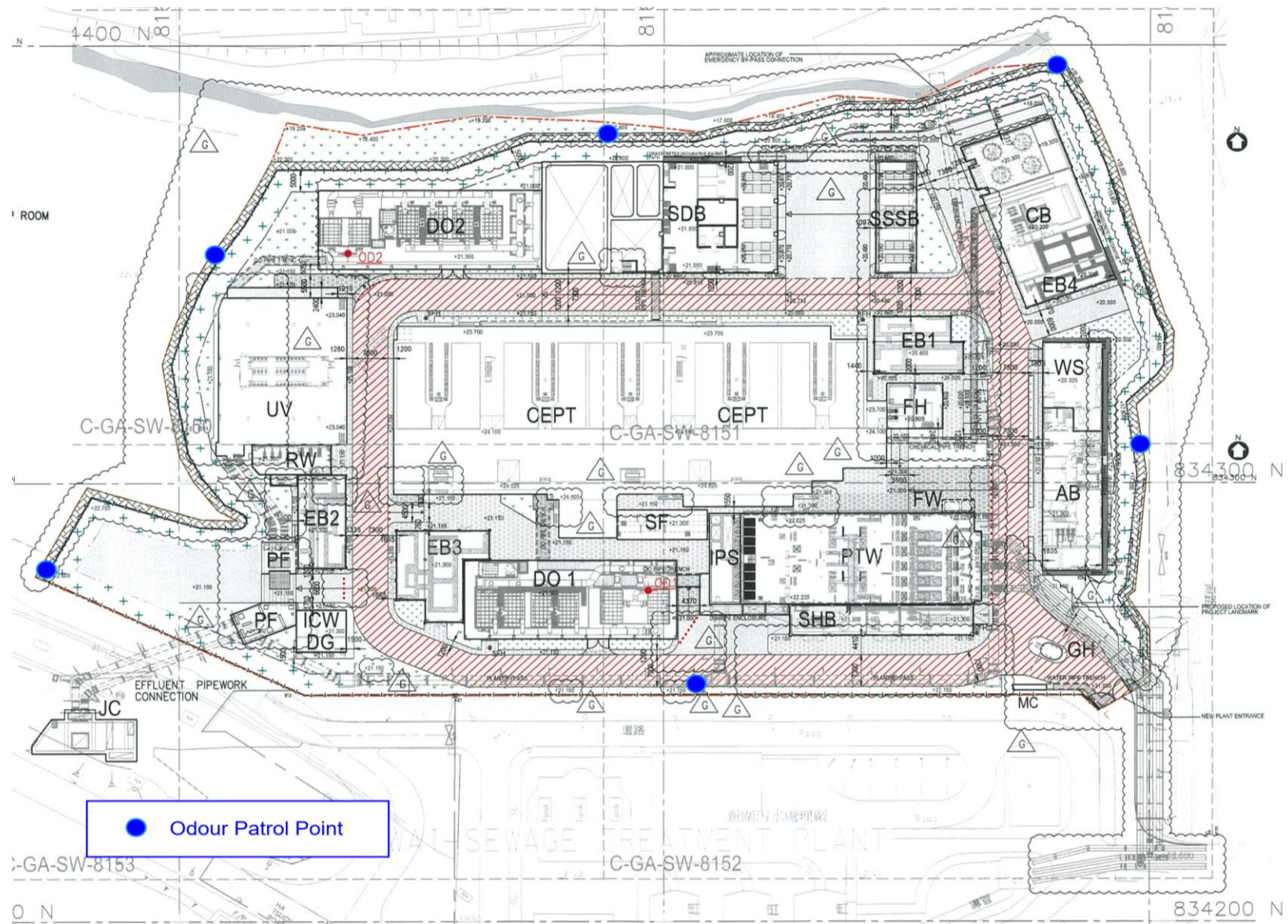
Figure 2.1





**Site Boundary Downwind Location of Exhaust Point of the Deodourisation Unit**





Contract No. DC/2013/10: Design, Build and Operate  
 San Wai Sewage Treatment Works –  
 Operational Phase Monitoring

### Locations of Odour Patrol Point

Date: July 2021

**AECOM**

Figure 2.3



Contract No. DC/2013/10: Design, Build and Operate  
San Wai Sewage Treatment Works –  
Operational Phase Monitoring

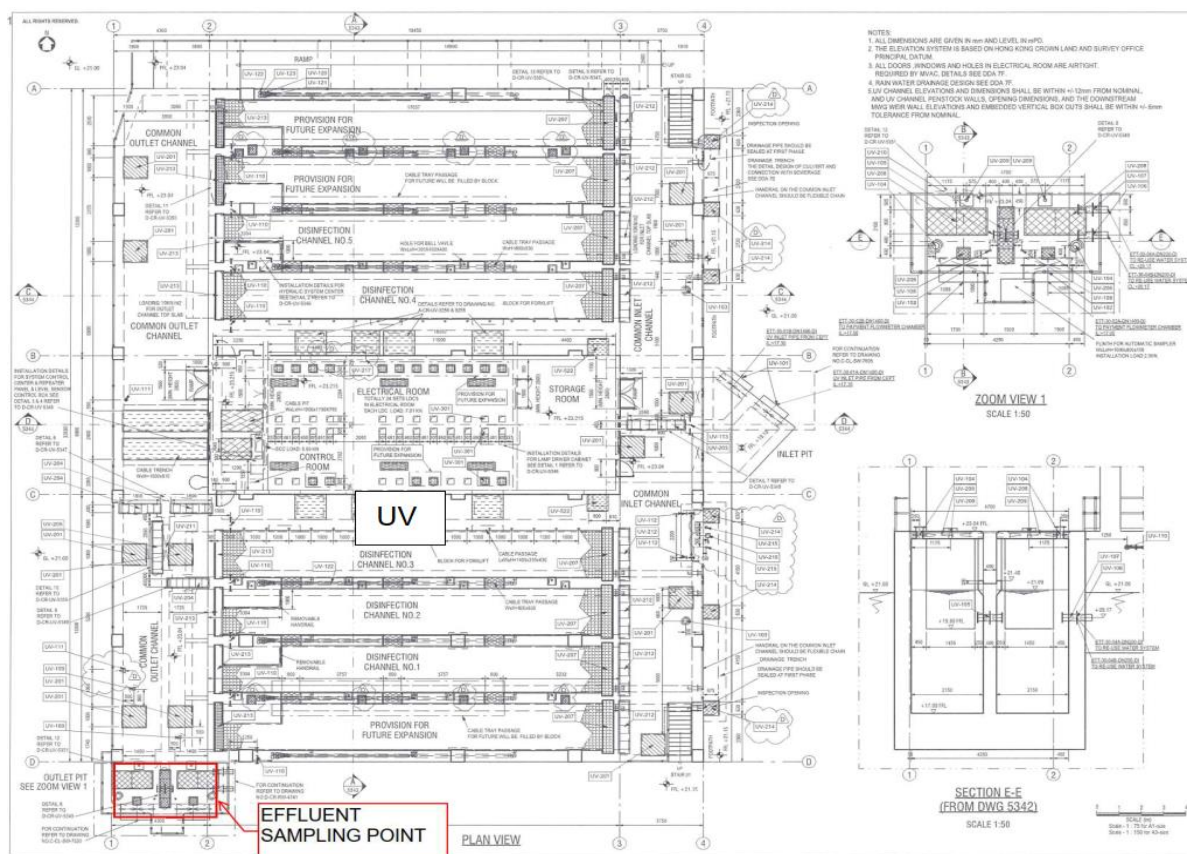
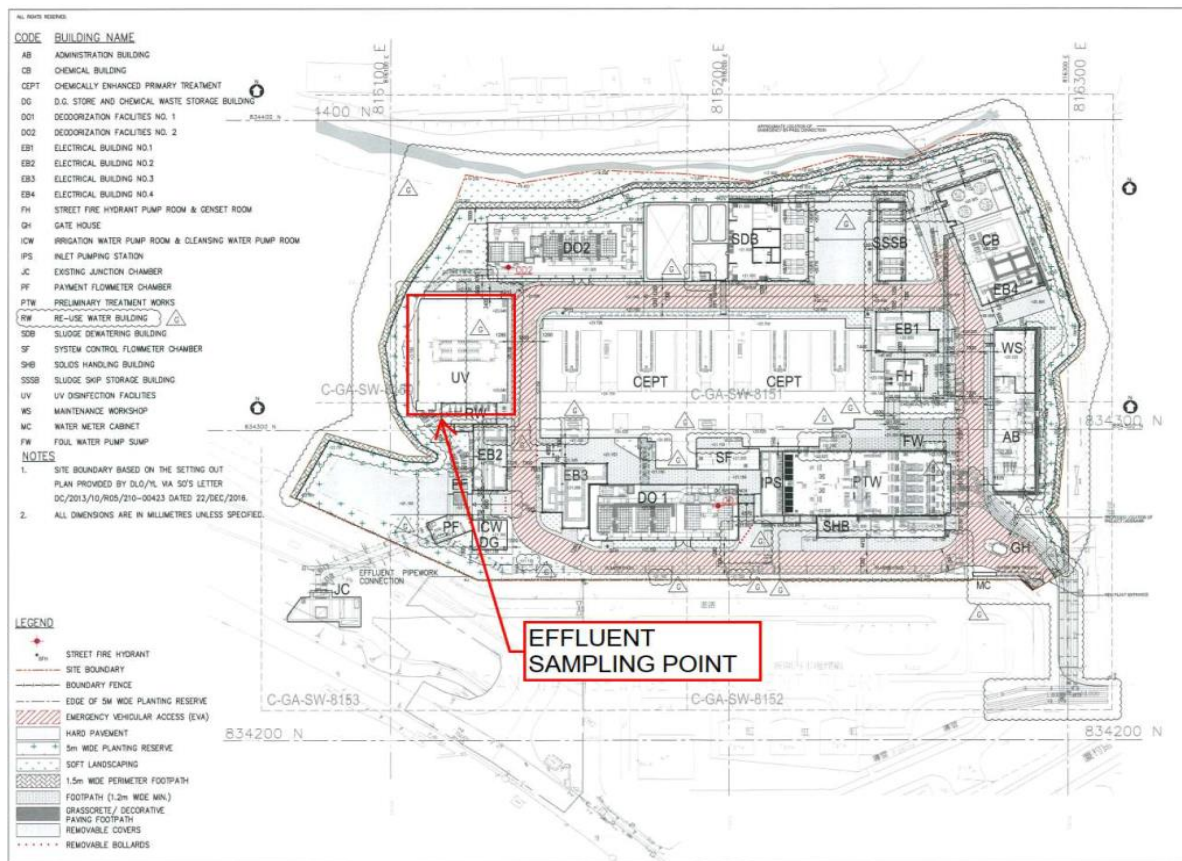
**Locations of Marine Water Quality Monitoring Stations**

**AECOM**

Date: July 2021

Figure 3.1





Contract No. DC/2013/10: Design, Build and Operate  
San Wai Sewage Treatment Works –  
Operational Phase Monitoring

## Locations of Effluent Monitoring Stations

**AECOM**

Date: July 2021

Figure 3.2

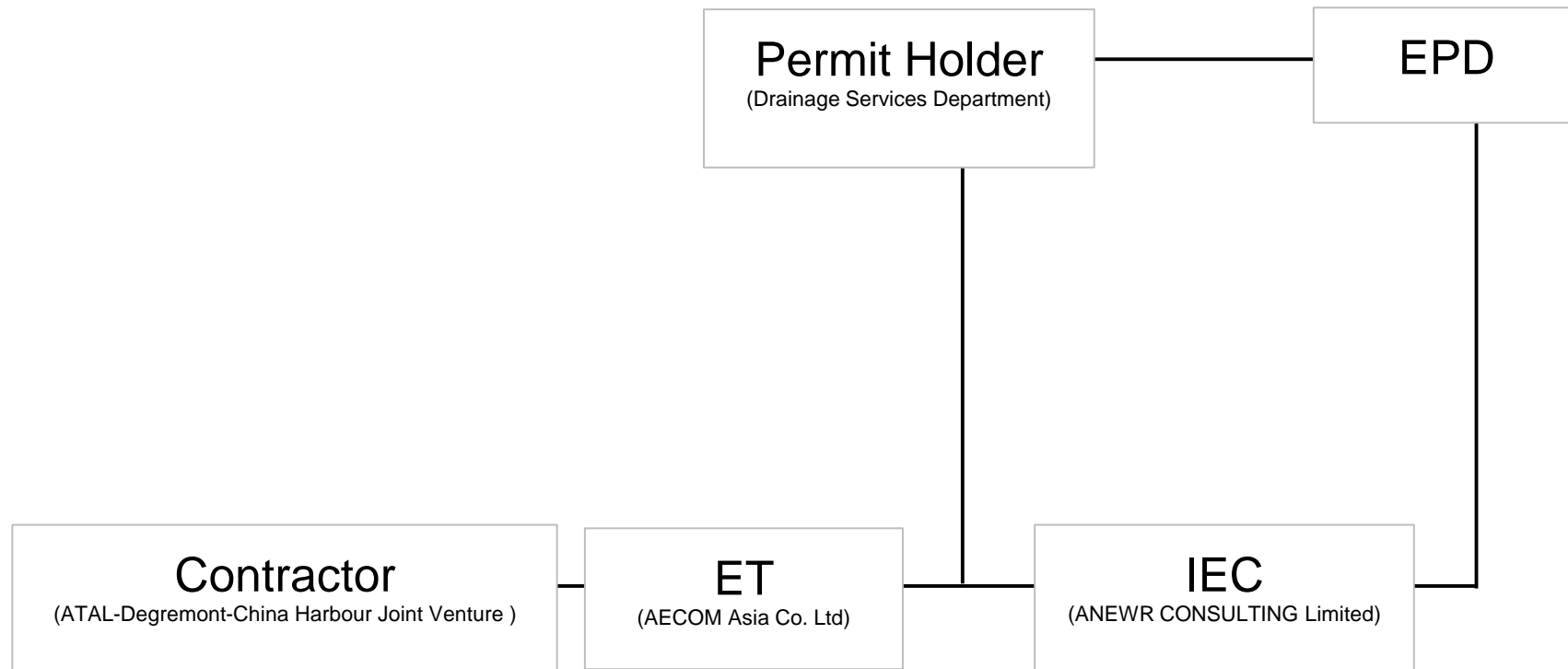
---

---

**APPENDIX A  
PROJECT ORGANIZATION STRUCTURE**

---

---



This Drawing has been prepared for the use of AECOM's client. It may not be used, modified, reproduced or relied upon by third parties, except as agreed by AECOM or as required by law. AECOM accepts no responsibility, and denies any liability whatsoever, to any party that uses or relies on this drawing without AECOM's express written consent.

Contract No. DC/2013/10  
Design, Build and Operate San Wai  
Sewage Treatment Works

## Project Organization Structure

**AECOM**

Date: June 2022

Appendix A

---

---

**APPENDIX B**  
**ACTION AND LIMIT LEVELS**

---

---

# Action and Limit Levels

## Action and Limit Levels for Operational Phase Odour Monitoring

Location of Monitoring	Parameters	Action Level	Limit Level
SB1	H <sub>2</sub> S concentration, ppm	0.0109	0.0109
ASR1		0.0100	0.0100
ASR2		0.0157	0.0157
OD1	H <sub>2</sub> S concentration in ppb/ppm, flow rate of exhaust in m <sup>3</sup> /s and temperature of exhaust (°C)	AL = LL/2 = 139 µg/s of H <sub>2</sub> S	LL = 277 µg/s of H <sub>2</sub> S
OD2			

---

---

**APPENDIX C**  
**EVENT AND ACTION PLAN**

---

---



# Event and Action Plan

## Event / Action Plan for the Operational Phase Odour Monitoring

Event	Action			
	ET	IEC	ER	Contractor
Exceedance of Action Level for one sample at site boundary, ASRs or exhaust of deodourisation unit	<ul style="list-style-type: none"> <li>Identify source/ reason of exceedance;</li> <li>Inform IEC and ER;</li> <li>Repeat measurement to confirm finding.</li> </ul>	<ul style="list-style-type: none"> <li>Check with Contractor on the operating activities and implementation of odour mitigation measures;</li> <li>Discuss with ET and Contractor on the possible remedial actions;</li> <li>Advise the ER on the effectiveness of the proposed remedial measures;</li> <li>Supervise implementation of remedial measures.</li> </ul>	<ul style="list-style-type: none"> <li>Confirm receipt of notification of exceedance in writing;</li> <li>Notify Contractor;</li> <li>Ensure remedial actions properly implemented.</li> </ul>	<ul style="list-style-type: none"> <li>Carry out investigation to identify the source/reason of exceedance or complaints. Investigation shall be completed within 1 week;</li> <li>Rectify any unacceptable practice;</li> <li>Amend working methods as required;</li> <li>Inform ET and EPD if the cause of exceedance is considered to be caused by the project;</li> <li>Implement amended working methods.</li> </ul>
Exceedance of Limit Level for one or more samples at site boundary, ASRs or exhaust of deodourisation unit	<ul style="list-style-type: none"> <li>Notify IEC, ER, Contractor and EPD;</li> <li>Identify source of odour;</li> <li>Increase monitoring frequency;</li> <li>Carry out analysis of the operating activities and implementation of odour mitigation measures to determine possible mitigation to be implemented</li> <li>Arrange meeting with IEC and ER to discuss the remedial actions to be taken;</li> <li>Assess effectiveness of the remedial actions and keep IEC, EPD and ER informed of the results;</li> <li>Carry out odour measurement using dynamic olfactometry after implementation of remedial measures to confirm their effectiveness.</li> </ul>	<ul style="list-style-type: none"> <li>Discuss amongst ET, ER and the Contractor on the potential remedial actions;</li> <li>Review the proposed remedial actions whenever necessary to assure their effectiveness and advise the ER accordingly;</li> <li>Supervise implementation of remedial measures.</li> </ul>	<ul style="list-style-type: none"> <li>Confirm receipt of notification of exceedance in writing;</li> <li>Notify Contractor;</li> <li>In consultation with the ET, agree with the Contractor on the remedial measures to be implemented;</li> <li>Ensure remedial measures properly implemented;</li> <li>If exceedance continues, consider what portion of the work is responsible and instruct the Contractor to stop that portion of work until the exceedance is abated.</li> </ul>	<ul style="list-style-type: none"> <li>Carry out investigation to identify the source/reason of exceedance. Investigation shall be completed within 1 week;</li> <li>Rectify any unacceptable practice;</li> <li>Amend working methods as required;</li> <li>Inform ET and EPD;</li> <li>Formulate remedial actions;</li> <li>Ensure amended working methods and remedial actions properly implemented;</li> <li>If exceedance continues, consider what portion of the work is responsible and stop that portion of work until the exceedance is abated.</li> </ul>