



東業德勤測試顧問有限公司
ETS-TESTCONSULT LTD.

8/F Block B,
Veristrong Industrial Centre,
34-36 Au Pui Wan Street,
Fo Tan, Hong Kong

T: +852 2695 8318
F: +852 2695 3944
E: eti@ets-testconsult.com
W: www.ets-testconsult.com




ATAL-DEGREMONT-CHINA HARBOUR JOINT VENTURE

**CONTRACT NO. DC/2013/10 - DESIGN,
BUILD AND OPERATE SAN WAI
SEWAGE TREATMENT WORKS –
PHASE 1**


**QUARTERLY EM&A REPORT
NO. 21**

(01 MAY 2022 – 31 JULY 2022)

Prepared by:


LAU, Wing Sum
Assistant Environmental Officer

Certified by:


LAU, Chi Leung
Environmental Team Leader

Issued Date: 31/01/2023

Report No.: ENA24126

This report shall not be reproduced unless with prior written approval from this laboratory.



TABLE OF CONTENTS

	Page
EXECUTIVE SUMMARY	
1 INTRODUCTION	1-2
1.1 Basic Project Information	1
1.2 Project Organization	1-2
1.3 Construction Programme	2
1.4 Construction Works Undertaken During the Reporting Period	2
2 EM&A REQUIREMENT	3-4
2.1 Summary of EM&A Requirements	3
2.2 Monitoring Requirements	3
2.3 Action and Limit Levels	3-4
2.4 Event and Action plans	4
2.5 Mitigation Measures	4
3 ENVIRONMENTAL MONITORING AND AUDIT	4-9
3.1 Air Quality Monitoring Result	4
3.2 Noise Monitoring Results	4
3.3 Water Quality Monitoring Results	4-5
3.4 Site Inspection	5-7
3.5 Advice on the Solid and Liquid Waste Management Status	7
3.6 Landscape and Visual Audit	7
3.7 Discharge License and Results of Effluent Monitoring	7-8
3.8 Implementation Status of Environmental Mitigation Measures	8-9
4 SUMMARY OF EXCEEDANCE, COMPLAINT, NOTIFICATION OF SUMMONS AND SUCESSFUL PROSECUTION	9-10
4.1 Summary of Exceedance of the Environmental Quality Performance Limit	9-10
4.2 Summary of Complaints, Notification of Summons and Successful Prosecution	10
5 COMMENTS, RECOMMENDATION AND CONCLUSION	10-11
5.1 Comments	10
5.2 Recommendations	10
5.3 Conclusion	10-11



LIST OF TABLES

Table 1.1	Contact Information of Key Personnel
Table 2.1	Action and Limit Levels for 1-hr and 24-hr TSP
Table 2.2	Action and Limit Levels for Construction Noise
Table 2.3	Action and Limit Levels for Water Quality
Table 3.1	Environmental Site Inspection Date
Table 3.2	Summary of observation of site inspections
Table 4.1	Summary of Environmental Complaints Notification of Summons and Successful Prosecution

LIST OF APPENDICES

Appendix A	Location of Works Areas
Appendix B	Project Organization Chart
Appendix C	Construction Programme
Appendix D	Graphical Plots of Impact Air Quality Monitoring Results
Appendix E	Graphical Plots of Impact Noise Monitoring Data
Appendix F	Graphical Plots of Impact Water Quality Monitoring Data
Appendix G	Event and Action Plan
Appendix H	Implementation Schedule for Environmental Mitigation Measures (EMIS)
Appendix I	Weather Condition
Appendix J	Waste Flow Table

FIGURES

Figure 1	Air Quality and Noise Monitoring Stations
Figure 2	Water Quality Monitoring Stations



EXECUTIVE SUMMARY

This Quarterly Environmental Monitoring and Audit (EM&A) Report is prepared for Contract No. DC/2013/10 - Design, Build and Operate San Wai Sewage Treatment Works – Stage 1 (the Project) (hereafter referred to as “the Contract”). The Contract was awarded to ATAL-DEGREMONT-CHINA HARBOUR JOINT VENTURE (ADCJV) by the Drainage Services Department (DSD) and ETS-Testconsult Limited was appointed as the Environmental Team (ET) by ADCJV to implement the EM&A program in compliance with the EP and the EM&A Manuals.

According to the Section 25 of the Particular Specification (PS) and the Environmental Permit No. EP-464/2013, an EM&A programme should be implemented in accordance with the procedures and requirements in the EM&A Manual of the approved EIA report (Registration No. AEIAR-072/2003). The scope of monitoring works includes air quality, construction noise, water quality and environmental site audit.

Baseline monitoring was completed in April 2017. Action and Limit Levels were established for air quality, noise and water quality parameters based on the baseline monitoring results.

This is the nineteenth Quarterly Environmental Monitoring and Audit (EM&A) Report for the Contract which summaries findings of the EM&A works conducted during the reporting period from 01 February to 30 April 2022.

Environmental Monitoring and Audit Progress

The quarterly EM&A programme was undertaken in accordance with the EM&A Manual for this Contract. The summary of the monitoring activities in this reporting period is listed below:

- *24-hour TSP Monitoring: 15 Occasions at 2 designated locations*
- *1-hour TSP Monitoring: 45 Occasions at 2 designated locations*
- *Noise Monitoring (Day-time): 15 Occasions at 2 designated locations*
- *Water Quality Monitoring: 38 Occasions at 1 designated location*
- *Weekly Site inspection: 13 Occasions*

Breaches of Action and Limit Levels

Air Quality Monitoring

No exceedance of Action and Limit levels was recorded for 1-hr and 24-hr TSP monitoring in the reporting period.

Noise Monitoring

No exceedance of Action and Limit levels for noise monitoring was recorded in the reporting period.

Water Quality Monitoring

According to the summary of water monitoring results, no exceedance of Action and Limit levels was recorded in this reporting period.

Weekly Site Inspections

In general, performance on environmental mitigation measures implemented was found to be satisfactory in this reporting period. The major findings observed during site inspections are presented in the **Section 3.4**.

Refer to the Certificate of Completion, the construction works under the Contract was substantial completed on 5 March 2021.

Complaint Log

There was no complaint received in relation to the environmental impact during the reporting period.

Notifications of Summons and Successful Prosecutions

There were no notifications of summons or prosecutions received during the reporting period.

Reporting Change

There were no reporting changes during the reporting period.



1 INTRODUCTION

1.1. Basic Project Information

- 1.1.1. This Quarterly Environmental Monitoring and Audit (EM&A) Report is prepared for Contract No. DC/2013/10 - Design, Build and Operate San Wai Sewage Treatment Works – Stage 1 (the Project) (hereafter referred to as “the Contract”). The Contract was awarded to ATAL-DEGREMONT-CHINA HARBOUR JOINT VENTURE (ADCJV) by the Drainage Services Department (DSD) and ETS-Testconsult Limited was appointed as the Environmental Team (ET) by ADCJV to implement the EM&A program in compliance with the EP and the EM&A Manuals.
- 1.1.2. The project involves expansion of the preliminary treatment works at San Wai STW from 164,000 m³/d to 200,000 m³/d Average Dry Weather Flow, upgrading the preliminary treatment level to CEPT and adding centralized disinfection. The site layout plan is shown in **Appendix A**. For any enquiries, hot line telephone (24 hours) at 9083 0560 was established.
- 1.1.3. According to the Section 25 of the Particular Specification (PS) and the Environmental Permit No. EP-464/2013, an EM&A programme should be implemented by an independent Environmental Team (ET) in accordance with the procedures and requirements in the EM&A Manual of the approved EIA report (Registration No. AEIAR-072/2003). These documents are available through the EIA Ordinance Register. The construction works of the Contract commenced on 16 May 2017.
- 1.1.4. The scope of monitoring works includes air quality, construction noise, water quality and environmental site audit. The EM&A requirements for each parameter described in the following sections include:
- All monitoring parameters;
 - Monitoring schedules for the reporting month and forthcoming months;
 - Action and Limit levels for all environmental parameters;
 - Event/Action Plans;
 - Environmental mitigation measures, as recommended in the Project EIA study final report; and
 - Environmental requirements in contract documents
- 1.1.5. As part of the project EM&A program, baseline monitoring was conducted from 21 March 2017 to 15 April 2017 to determine the ambient environmental conditions before the project commence any major construction works and it had been verified by IEC and endorsed by EPD.
- 1.1.6. This is the 21st Quarterly Environmental Monitoring and Audit (EM&A) Report for the Contract which summaries findings of the EM&A works conducted during the reporting period from 01 May to 31 July 2022.

1.2. Project Organization

- 1.2.1. The project organization structure and lines of communication with respect to the on-site environmental management structure is shown in **Appendix B**. The key personnel contact names and numbers are summarized in **Table 1.1**.



Table 1.1 Contact Information of Key Personnel

Party	Position	Name of Key Staff	Tel. No.	E-mail
<i>Supervising Officer (AECOM Asia Co. Ltd.)</i>	<i>Chief Resident Engineer</i>	<i>Mr. C. Y. Hung</i>	<i>5222 6560</i>	<i>cy.hung@swstw-aeom.com</i>
<i>Independent Environmental Checker (ANewR Consulting Limited)</i>	<i>Director</i>	<i>Mr. James Choi</i>	<i>2618 2831</i>	<i>jpschoi@anewr.com</i>
<i>Contractor (ATAL-DEGREMONT-CHINA HARBOUR JOINT VENTURE)</i>	<i>Environmental Supervisor</i>	<i>Mr. Isaac Chan</i>	<i>9688 2349</i>	<i>isaac.chan@c302.heck.com</i>
<i>Environmental Team (ETS-Testconsult Ltd.)</i>	<i>Environmental Team Leader</i>	<i>Mr. C. L. Lau</i>	<i>2946 7791</i>	<i>env@ets-testconsult.com</i>
<i>Environmental Team (Operational Phase) (AECOM Asia Co. Ltd.)</i>	<i>Environmental Team</i>	<i>Ms Lemon Lam</i>	<i>3922 9381</i>	<i>lemon.lam@aeom.com</i>

1.3. Construction Programme

1.3.1. A copy of the Contractor's construction programme is provided in **Appendix C**.

1.4. Construction Works Undertaken During the Reporting Period

1.4.1. A summary of the construction activities undertaken during this reporting period is shown below:

- *Construction of Additional Slab*
- *Construction of Boundary Footing*
- *Backfill and Pavement Construction*
- *Landscape and Maintenance Works.*

2 EM&A Requirement

2.1. Summary of EM&A Requirements

2.1.1. The scope of monitoring works includes air quality, construction noise, water quality and environmental site audit. The EM&A requirements for each parameter described in the following sections include:

- All monitoring parameters;
- Monitoring schedules for the reporting month and forthcoming months;
- Action and Limit levels for all environmental parameters;
- Event/Action Plans;
- Environmental mitigation measures, as recommended in the Project EIA study final report; and
- Environmental requirements in contract documents

2.2. Monitoring Requirements

2.2.1. Air Quality Monitoring

In accordance with the EM&A Manual, 1-hr and 24-hr TSP air quality monitoring were conducted three times and once per six days correspondingly. Air quality monitoring were conducted at ASR1a (晉榮貨櫃服務有限公司) and ASR2b (永康貨櫃服務有限公司), which was shown in **Figure 1** and **Figure 2**.

2.2.2. Noise Monitoring

Noise levels (L_{eq} , L_{10} and L_{90}) were monitored in the reporting period in accordance with the EM&A Manual. Noise monitoring were performed at NSR1a (晉榮貨櫃服務有限公司) and NSR2b (永康貨櫃服務有限公司), which was shown in **Figure 1** and **Figure 2**.

2.2.3. Water Quality Monitoring

Water quality was monitored 3 times per week in the reporting period in accordance with the EM&A Manual at the one alternative water quality monitoring station, R1b (at Tin Shui Wai Nullah) which shown in **Figure 2**.

2.2.4 The equipment, monitoring parameters, frequency and duration, monitoring methodology, monitoring schedule, meteorological information are detailed in the monthly EM&A Reports.

2.3. Action and Limit Levels

2.3.1. The Action and Limit Levels for 1-hr TSP and 24-hr TSP are provided in **Table 2.1**.

Table 2.1 Action and Limit Levels for 1-hr and 24-hr TSP

Air Quality Monitoring Station	1-hr TSP ($\mu\text{g}/\text{m}^3$)		24-hr TSP ($\mu\text{g}/\text{m}^3$)	
	Action Level	Limit Level	Action Level	Limit Level
ASR1a	309	500	260	260
ASR2b	292	500	228	260

2.3.2. The Action and Limit Levels for construction noise are provided in **Table 2.2**

Table 2.2 Action and Limit Levels for Construction Noise

Time Period	Action	Limit
0700 – 1900 hrs normal weekdays	When one documented complaint is received	75 dB(A)*

Remark: (*)70dB(A) for schools and 65dB(A) for schools during school examination period

2.3.3. The Action and Limit Levels for Water Quality are provided in **Table 2.3**

Table 2.3 Action and Limit Levels for Water Quality

<i>Parameters</i>	<i>Unit</i>	<i>Action</i>	<i>Limit</i>
<i>Turbidity</i>	<i>NTU</i>	<i>19.8</i>	<i>20.5</i>
<i>Dissolved Oxygen</i>	<i>mg/L</i>	<i>1.84</i>	<i>1.81</i>
<i>Suspended Solid</i>	<i>mg/L</i>	<i>17.0</i>	<i>17.8</i>

2.4. Event and Action Plans

2.4.1. The event and action plan is provided in **Appendix G**.

2.5. Mitigation Measures

2.5.1. Environmental mitigation measures for the Contract were recommended in the Approved EIA Report. **Appendix H** lists the recommended mitigation measures and the implementation status.



3 ENVIRONMENTAL MONITORING AND AUDIT

3.1. Air Quality Monitoring Result

- 3.1.1. No exceedance of Action and Limit levels was recorded for 1-hr and 24-hr TSP monitoring in this quarter. Graphical presentation of 1-hour and 24-hour TSP monitoring results is shown in **Appendix D**. Wind data included wind speed and wind direction was extracted from Wetland Park Station of Hong Kong Observatory and is presented in **Appendix I**.
- 3.1.2. Generally, 1-hour TSP and 24-hour TSP monitoring results fluctuated well below the Action Level in this reporting period. The major dust source observed near the monitoring stations was mainly from vehicles passing by the container yards and general earth works. It can be concluded that the contractor implemented sufficient dust mitigation measures during this reporting quarter.
- 3.1.3. Apart from the construction activities, the cargo trunks passing through the container yards (晉榮貨櫃服務有限公司 and 永康貨櫃服務有限公司) would also generate dust since the Ha Tsuen Road was mainly made by soil and sand. A part of 1-hour TSP and 24-hour TSP monitoring results were contributed by the cargo trunks.

3.2. Noise Monitoring Results

- 3.2.1. No exceedance of Action and Limit Level of noise monitoring results was recorded during the reporting quarter. Graphical presentation of 1-hour and 24-hour TSP monitoring results for the reporting period is shown in **Appendix E**.
- 3.2.2. The noise monitoring data were found to be lower than the limit level. The major noise source during the monitoring event was the vehicles passing through the container yard entrance and the general earth works inside the construction site.
- 3.2.3. Since NSR1a and NSR2b were located inside the container yards, the frequency of vehicles moving in and out the container yards would influence the noise monitoring results.

3.3. Water Quality Monitoring Result

- 3.3.1. According to the summary of water monitoring results, no exceedance of Action and Limit levels was recorded in this reporting period. Graphical presentation of the monitoring results for the reporting period is shown in **Appendix F**.
- 3.3.2. Generally, the turbidity and suspended solids were found to be lower than the action level. Besides, all results of dissolved oxygen measured in this reporting period were higher than the action level.
- 3.3.3. Aside from the discharge, weather condition would be a major factor that affects the water quality in Tin Shui Wan Nallah. In rainy day, the soil and other suspended materials were flushed along the shore and entered the Tin Shui Wai Nullah. Besides, the nullah water would flow rapidly and the sand and stones in the nullah bed were upturned. Thus, the water quality would be deteriorated.

3.4. Site Inspection

- 3.4.1. Site Inspections were carried out on a weekly basis to monitor the implementation of proper environmental pollution control mitigation measures in the construction phase for the project. The dates of environmental site inspections during the reporting period are listed in **Table 3.1**.

Table 3.1 Environmental Site Inspection Date

May 2022	June 2022	July 2022
06, 13, 20 and 27	02, 10, 16, 23 and 30	07, 15, 22 and 29

3.4.2. Observations for the site inspections within this reporting period are summarized in **Table 3.2**.

Table 3.2 Summary of observation of site inspections

Date	Observations / Reminders	Follow-up Action	Closed Date
06 May 2022	--	--	--
10 May 2022	--	--	--
20 May 2022	--	--	--
27 May 2022	--	--	--
02 June 2022	--	--	--
10 June 2022	--	--	--
16 June 2022	--	--	--
23 June 2022	--	--	--
30 June 2022	--	--	--
07 July 2022	--	--	--
15 July 2022	--	--	--
22 July 2022	--	--	--
29 July 2022	--	--	--

3.5. Advice on the Solid and Liquid Waste Management Status

3.5.1. All types of waste arising from the construction work are classified into the following:

- Construction & Demolition (C&D) Material;
- Chemical Waste;
- General Refuse; and
- Excavated Soil

3.5.2. The quantities of waste for disposal in this reporting period are summarized in the Monthly Summary Waste Flow Table which is shown in **Appendix J**.

3.5.3. To control over the site performance on waste management, the Contractor shall ensure that all solid and liquid waste management works are in full compliance with the relevant license/permit requirements, such as the effluent discharge license and the chemical waste producer registration. The Contractor is also reminded to implement the recommended environmental mitigation measures according to the EM&A Manual based on actual site conditions.

3.6. Landscape and Visual Audit

3.6.1. Landscape and visual audits were undertaken at least once every two weeks throughout the construction period by a competent landscape architect. Due to the poor weather condition, only 1 audit was carried out on MAY. During the reporting period, audits were carried out on 19 May, 16 and 29 June, 15 and 29 July 2022.

3.6.2. Observations and reminders were summarized in the landscape and visual impact assessment checklists which are attached in the monthly EM&A reports.

3.7. Discharge License and Results of Effluent Monitoring

3.7.1. Effluent quality was monitored in the reporting quarter in accordance with the EM&A Manual at the discharge point. The location of Wetsep treatment tank was shown in **Figure 3**. A discharge license under Water Pollution Control Ordinance was obtained by the Contractor upon commencement of the Project. Self-monitoring would be performed as per the requirement under the discharge license. According to the EM&A Manual, pH, chemical oxygen demand and total suspended solid are required to be analysed at least once every two week.

3.7.2. In the reporting period, there is no construction activity in the operation phase. Effluent monitoring was not carry out since February 2022.

3.8. Implementation Status of Environmental Mitigation Measures

- 3.8.1. The environmental mitigation measures that recommended in the Environmental Monitoring and Audit Manual covered the issues of dust, noise and waste and they are summarized as following:

Dust Mitigation Measures

- a. The working area for the uprooting of trees, shrubs, or vegetation or for the removal of boulders, poles, pillars or temporary or permanent structures should be sprayed with water or a dust suppression chemical immediately before, during and immediately after the operation so as to maintain the entire surface wet;
- b. All demolished items (including trees, shrubs, vegetation, boulders, poles, pillars, structures, debris, rubbish and other items arising from site clearance) that may dislodge dust particles should be covered entirely by impervious sheeting or placed in an area sheltered on the top and the 3 sides within a day of demolition;
- c. Vehicle washing facilities including a high pressure water jet should be provided at every discernible or designated vehicle exit point;
- d. The area where vehicle washing takes place and the section of the road between the washing facilities and the exit point should be paved with concrete, bituminous materials or hardcores;
- e. Where a site boundary adjoins a road, street, service and or other area accessible to the public, hoarding of not less than 2.4m from ground level should be provided along the entire length of that portion of the site boundary except for a site entrance or exit;
- f. Every main haul road (i.e. any course inside a construction site having a vehicle passing rate of higher than 4 in any 30 minutes) should be paved with concrete, bituminous materials, hardcores or metal plates, and kept clear of dusty materials; or sprayed with water or a dust suppression chemical so as to maintain the entire road surface wet;
- g. The portion of any road leading only to a construction site that is within 30m of a discernible or designated vehicle entrance or exit should be kept clear of dusty materials;
- h. Immediately before leaving a construction site, every vehicle should be washed to remove any dusty materials from its body and wheels;
- i. Where a vehicle leaving a construction site is carrying a load of dusty materials, the load should be covered entirely by clean impervious sheeting to ensure that the dusty materials do not leak from the vehicle;
- j. The working area of any excavation or earth moving operation should be sprayed with water or a dusty suppression chemical immediately before, during and immediately after the operation so as to maintain the entire surface wet;
- k. Exposed earth shall be properly treated by compaction, turfing, hydroseeding, vegetation planting or sealing with latex, vinyl, bitumen, shotcrete or other suitable surface stabilizer within 6 months after the last construction activity on the construction site or part of the construction site where the exposed earth lies;
- l. Any stockpile of dusty material should be either covered entirely by impervious sheeting; placed in an area sheltered on the top and the 3 sides; or sprayed with water or a dust suppression chemical so as to maintain the entire surface wet.

Noise Mitigation Measures

- a. Quiet plants should be used in order to reduce the noise impacts to protect the nearby NSRs.
- b. Temporary and Movable Noise Barriers should be used in order to reduce the noise impact to the surrounding sensitive receivers
- c. The contractor should site noisy equipment and activities as far from sensitive receivers as practical.
- d. Idle equipment should be turned off or throttled down.
- e. Construction activities should be planned so that parallel operation of several sets of equipment close to a given receiver is avoided
- f. Construction plant should be properly maintained and operated.

Water Quality Mitigation Measures

- a. Exposed stockpiles should be covered with tarpaulin or impervious sheets before a rainstorm occurs;
- b. The exposed soil surfaces should also be properly protected to minimize dust emission;
- c. The stockpiles of materials should be placed in the locations away from the drainage channel so as to avoid releasing materials into the channel;
- d. Wheel washing facilities should be provided at site exits to ensure that earth, mud and debris would not be carried out of the works areas by vehicles;
- e. Provision of site drainage systems and treatment facilities would be required to minimize the water pollution;
- f. A discharge license needs to be applied from EPD for discharging effluent from the construction site;
- g. The treated effluent quality is required to meet the requirements specified in the discharge license;
- h. Provision of chemical toilets is required to collect sewage from workforce. The chemical toilets should be cleaned on a regular basis;
- i. A licensed waste collector should be employed to clean the chemical toilets and temporary storage tank on a regular basis;
- j. Illegal disposal of chemicals should be strictly prohibited;
- k. Registration as a chemical waste producer is required if chemical wastes are generated and need to be disposed of. The Waste Disposal Ordinance (Cap 354) and its subsidiary regulations in particular the Waste Disposal (Chemical Waste) (General) Regulation should be observed and complied with for control of chemical wastes;
- l. Disposal of chemical wastes should be carried out in compliance with the Waste Disposal Ordinance. The Code of Practice on the Packaging, Labelling and Storage of Chemical Wastes published under the Waste Disposal Ordinance should be used as a guideline for handling chemical wastes;
- m. The impact from accidental spillage of chemicals can be effectively controlled through good management practices.

Waste Management Mitigation Measures

- a. Segregation and storage of different types of waste in different containers, skips or stockpiles to enhance reuse or recycling of materials and their proper disposal;
- b. To encourage collection of aluminium cans by individual collectors, separate bins should be provided to segregate this waste from other general refuse generated by the workforce;
- c. Any unused chemicals or those with remaining functional capacity should be recycled;
- d. Prior to disposal of C&D waste, it is recommended that wood, steel and other metals be separated for re-use and/or recycling and inert waste as fill material to minimize the quantity of waste to be disposed of to landfill;
- e. Proper storage and site practices to minimize the potential for damage or contamination of construction materials; and
- f. Plan and stock construction materials carefully to minimize amount of waste generated and avoid unnecessary generation of waste.



4 SUMMARY OF EXCEEDANCE, COMPLAINT, NOTIFICATION OF SUMMONS AND SUCCESSFUL PROSECUTION

4.1. Summary of Exceedance of the Environmental Quality Performance Limit

- 4.1.1. There was no Action and Limit level exceedance of 1-hour and 24-hr TSP monitoring was recorded at station ASR1a and ASR2a during this reporting period.
- 4.1.2. There was no Action and Limit Level exceedance for noise recorded at station NSR1a and NSR2a during the reporting period.
- 4.1.3. According to the summary of water monitoring results, there was no Action and Limit Level exceedance for water quality monitoring recorded at station R1b during the reporting period.

4.2. Summary of Complaints, Notification of Summons and Successful Prosecution

- 4.2.1. There were no complaints received during the reporting period.
- 4.2.2. There were no notifications of summons or prosecutions received during the reporting period.
- 4.2.3. A summary of environmental complaints, notifications of summons and successful prosecutions was given in **Table 4.1**.

Table 4.1 Summary of Environmental Complaints Notification of Summons and Successful Prosecution

Reporting Period	Cumulative Statistic		
	Complaints	Notifications of summons	Successful prosecutions
The reporting period	0	0	0
From commencement date of construction to end of reporting month	0	0	0



5 COMMENTS, RECOMMENDATIONS AND CONCLUSION

5.1. Comments

- 5.1.1. According to the environmental site inspection undertaken during the reporting period, no observation and follow-up action are required.

5.2. Recommendations

- 5.2.1. With implementation of the recommended environmental mitigation measures, the contract's environmental impacts were considered environmentally acceptable. The weekly environmental site inspections ensured that all the environmental mitigation measures recommended were effectively implemented.
- 5.2.2. The recommended environmental mitigation measures, as included in the EM&A programme, effectively minimize the potential environmental impacts from the Contract. Also, the EM&A programme effectively monitored the environmental impacts from the construction activities and ensure the proper implementation of mitigation measures. No particular recommendation was advised for the improvement of the programme.

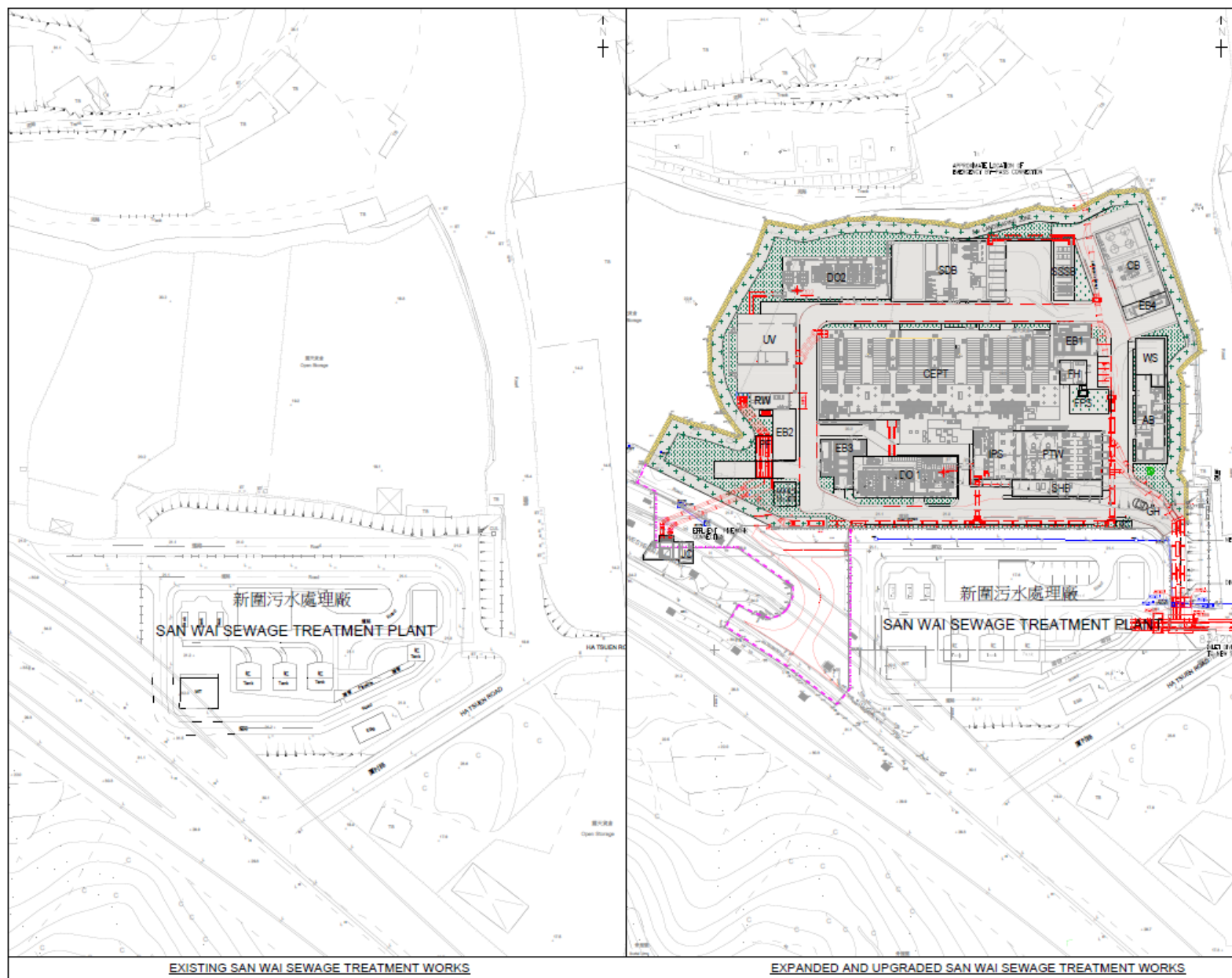
5.3. Conclusions

- 5.3.1. There was no Action and Limit level exceedance of 1-hour and 24-hr TSP monitoring was recorded at station ASR1a and ASR2a during this reporting period.
- 5.3.2. There was no Action and Limit Level exceedance for noise recorded at station NSR1a and NSR2a during the reporting period.
- 5.3.3. According to the summary of water monitoring results, there was no Action and Limit Level exceedance for water quality monitoring recorded at station R1b during the reporting period.
- 5.3.4. Environmental site inspections were carried out on 06, 10, 20 and 27 May 2022, 02, 10, 16, 23 and 30 June 2022, 07, 15, 22 and 29 July 2022.
- 5.3.5. There were no complaints received during the reporting period.
- 5.3.6. There was no notification of summons and successful prosecution received during the reporting period.

- END OF REPORT -

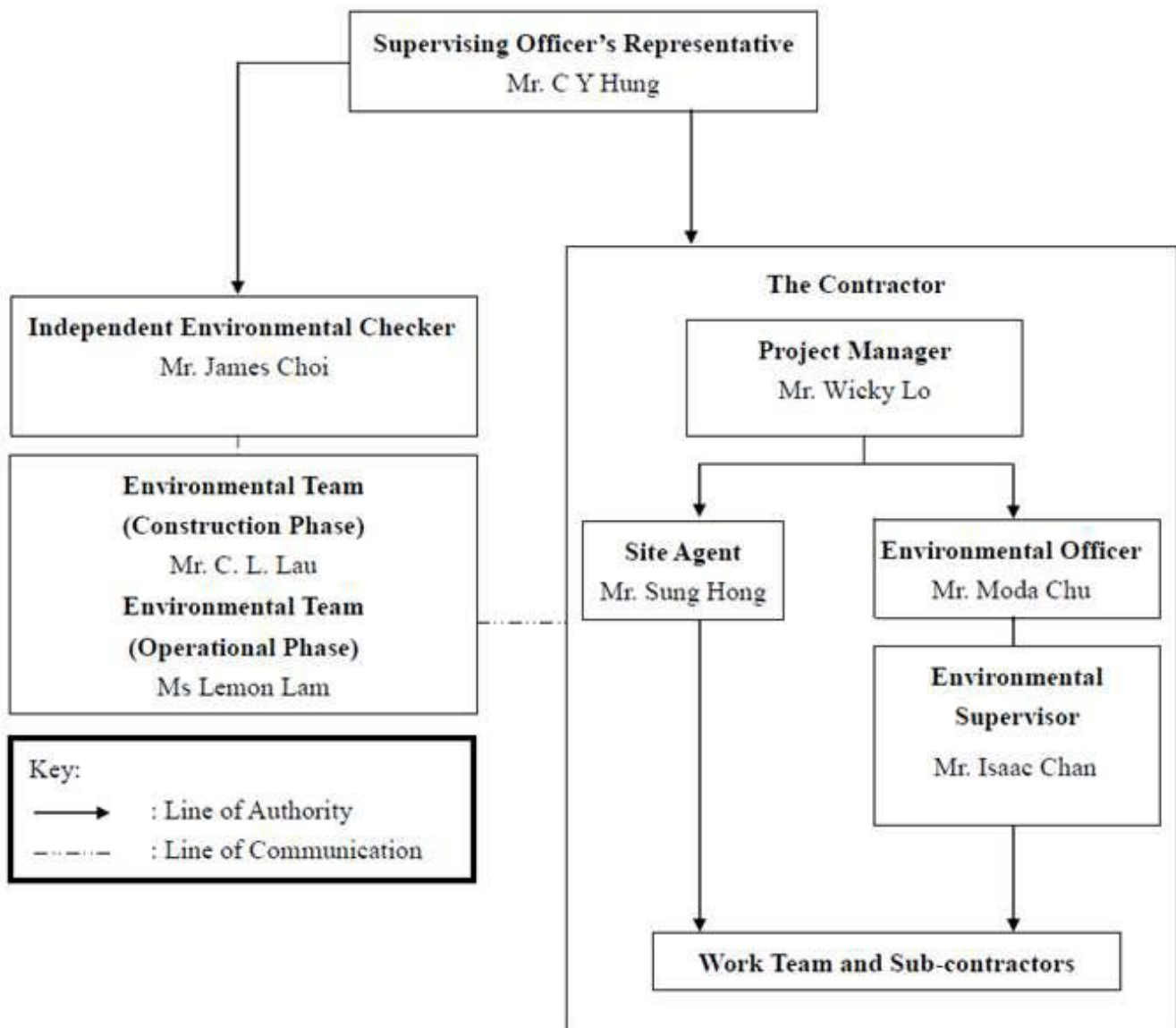
Appendix A

Location of Works Areas



Appendix B

Project Organization Chart



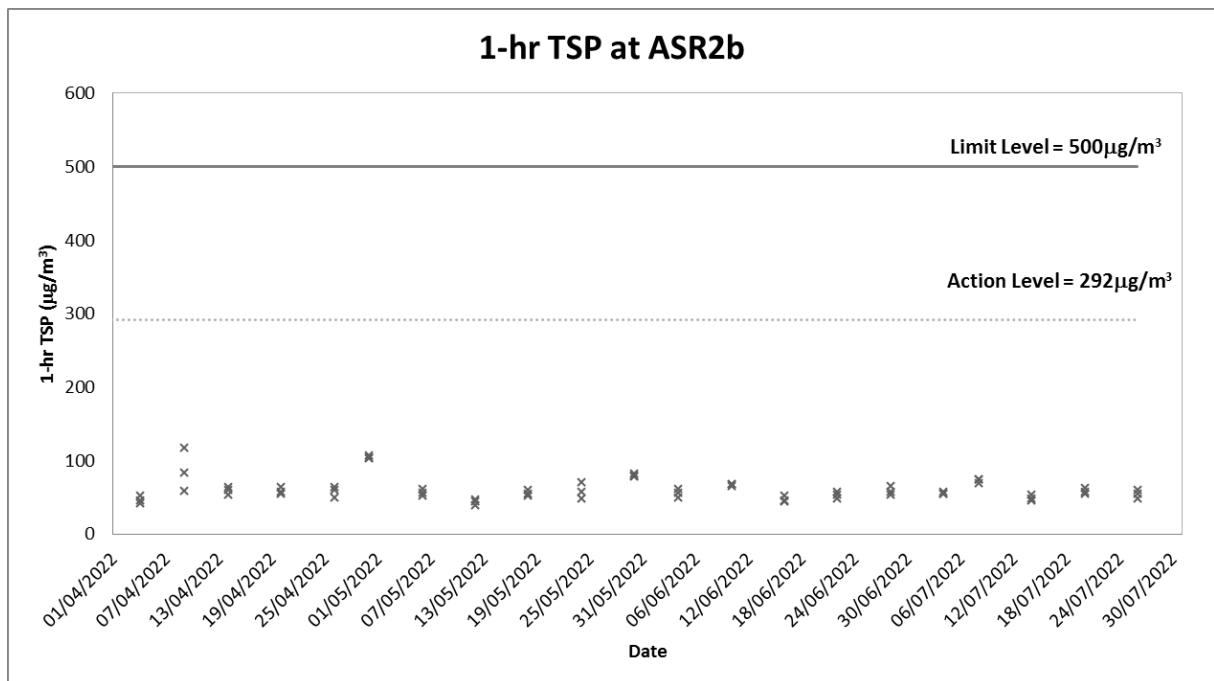
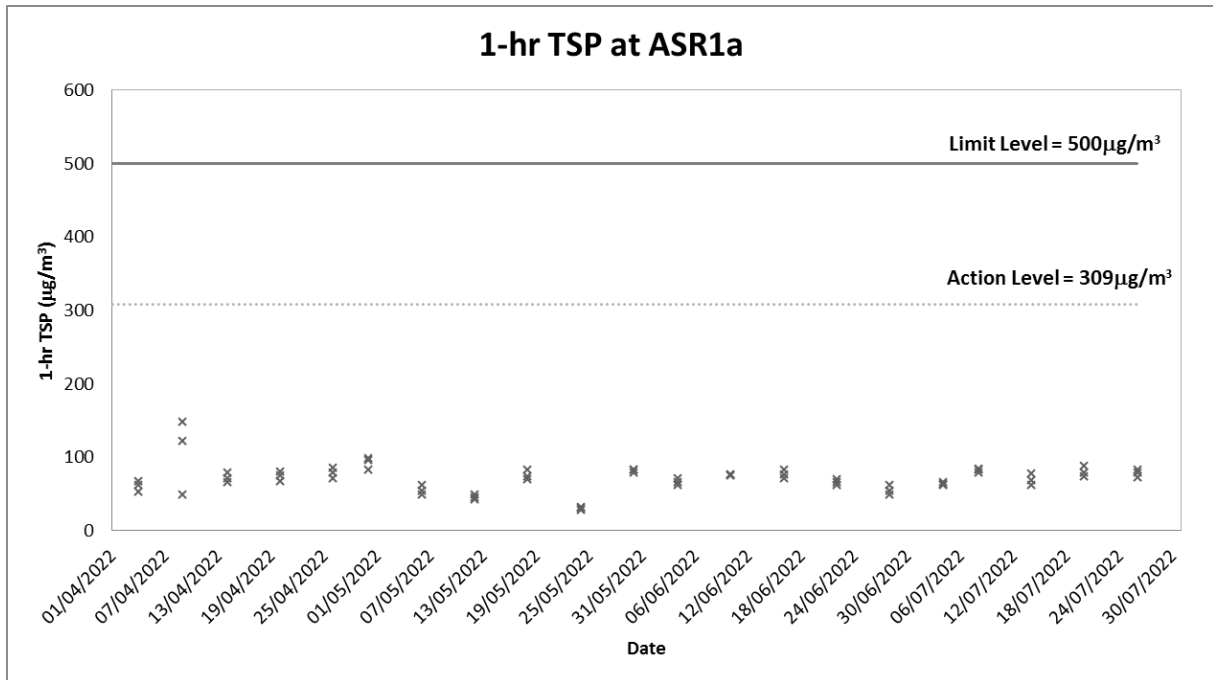
Appendix C

Construction Programme

DATA DATE: 01-Mar-22		LAYOUT: SW Project Phase 1 (6M01Mar22)					PAGE 1 OF 1					
Activity ID	Activity Name	At Completion Duration	Start	Finish	2022							
					Feb	Mar	Apr	May	Jun	Jul	Aug	Sep
SWSTW Phase 1 - 6 Month Rolling Programme (Mar 2022 to Aug 2022)		214	01-Mar-22	30-Sep-22								
Existing Junction Chamber		103	01-Mar-22	11-Jun-22								
JC1000	Bar Screen Installation	28	01-Mar-22	28-Mar-22			Bar Screen Installation					
JC1010	Construction of Additional Slab	72	01-Apr-22	11-Jun-22			Construction of Additional Slab					
Emergency Access at P5		127	27-May-22	30-Sep-22								
EA1000	Construction of Boundary Footing	22	27-May-22	17-Jun-22				Construction of Boundary Footing				
EA1010	Backfill and Pavement Construction	17	18-Jun-22	04-Jul-22				Backfill and Pavement Construction				
EA1020	Landscape and Maintenance Works	88	05-Jul-22	30-Sep-22								

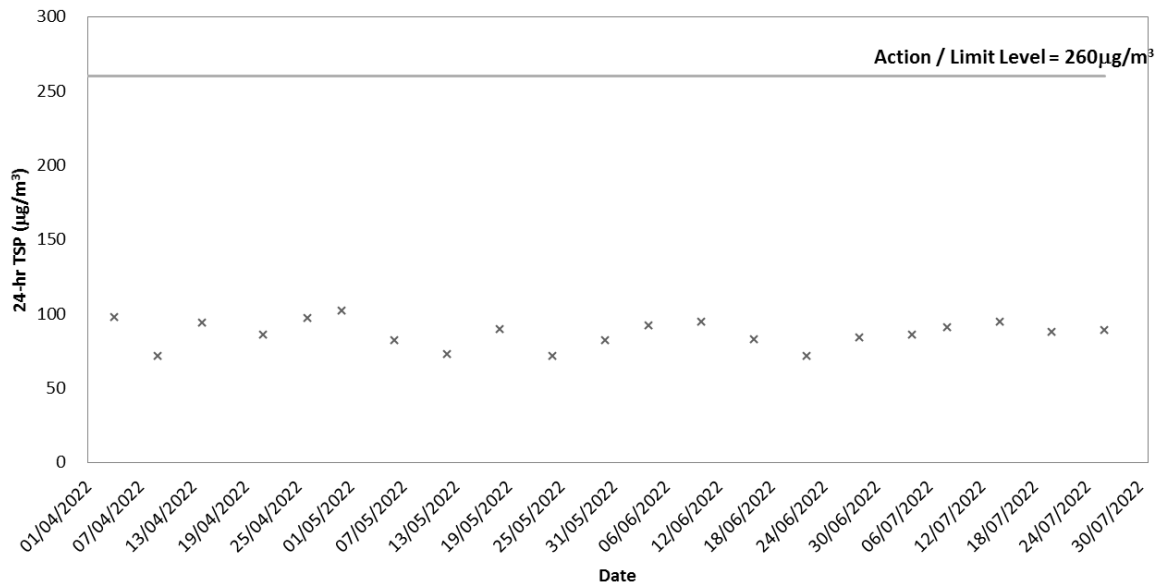
Appendix D

Graphical Plots of Impact Air Quality Monitoring Results

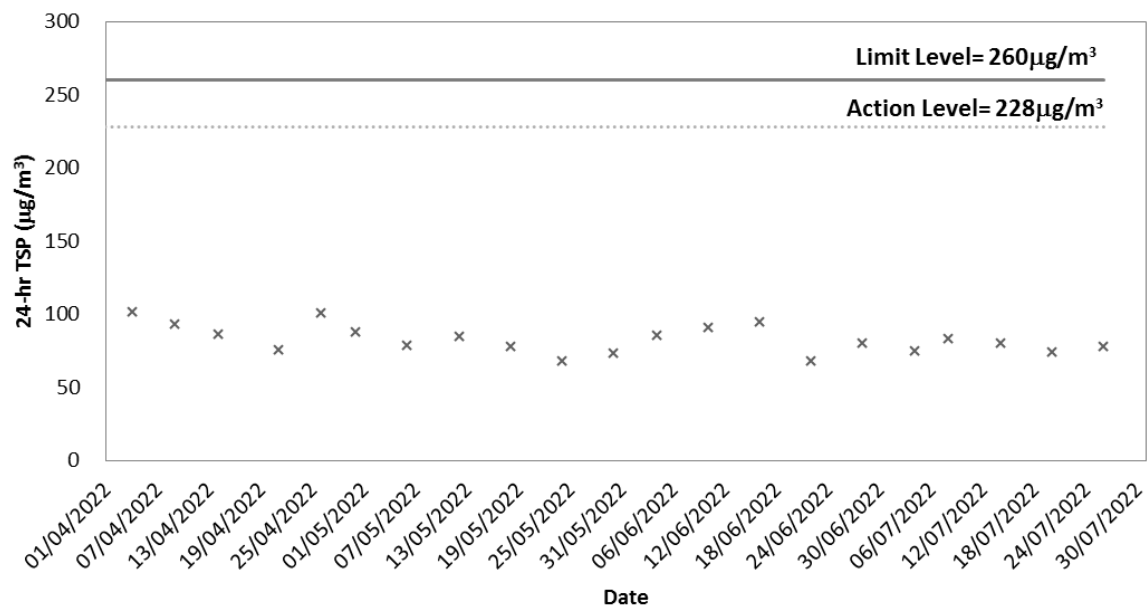




24-hr TSP at ASR1a



24-hr TSP at ASR2b

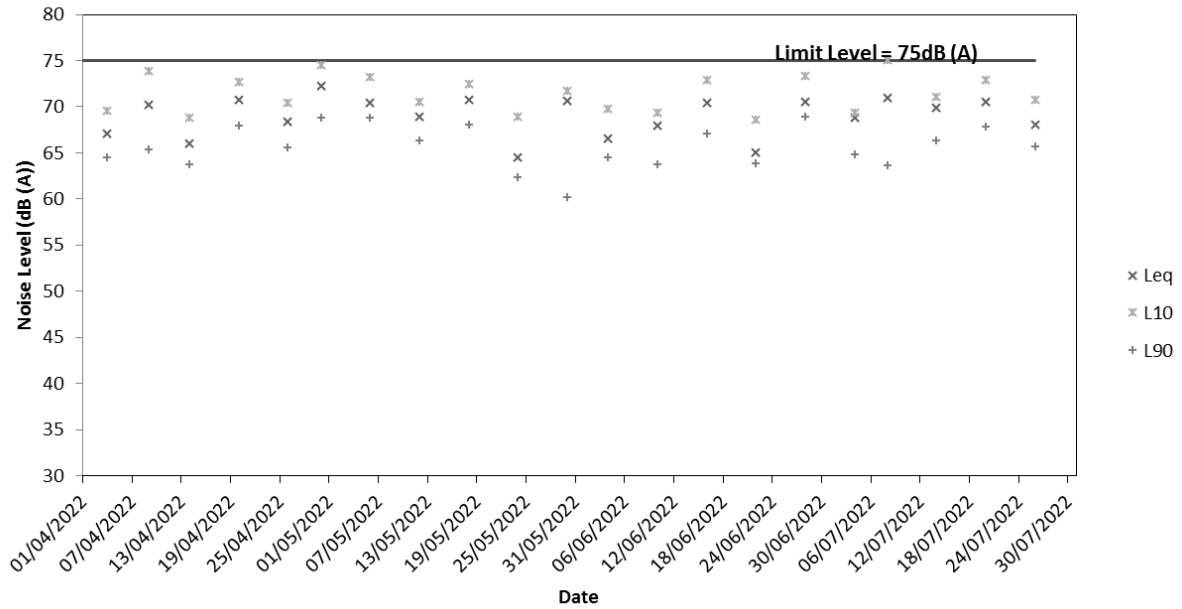


Appendix E

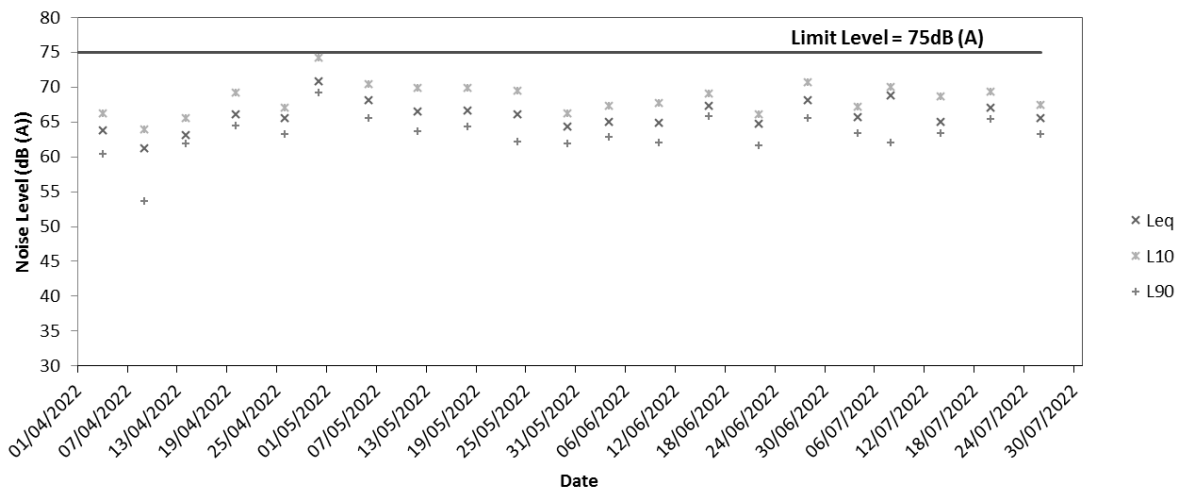
Graphical Plots of Impact Noise Monitoring Data



Noise Level at NSR1a



Noise Level at NSR2b

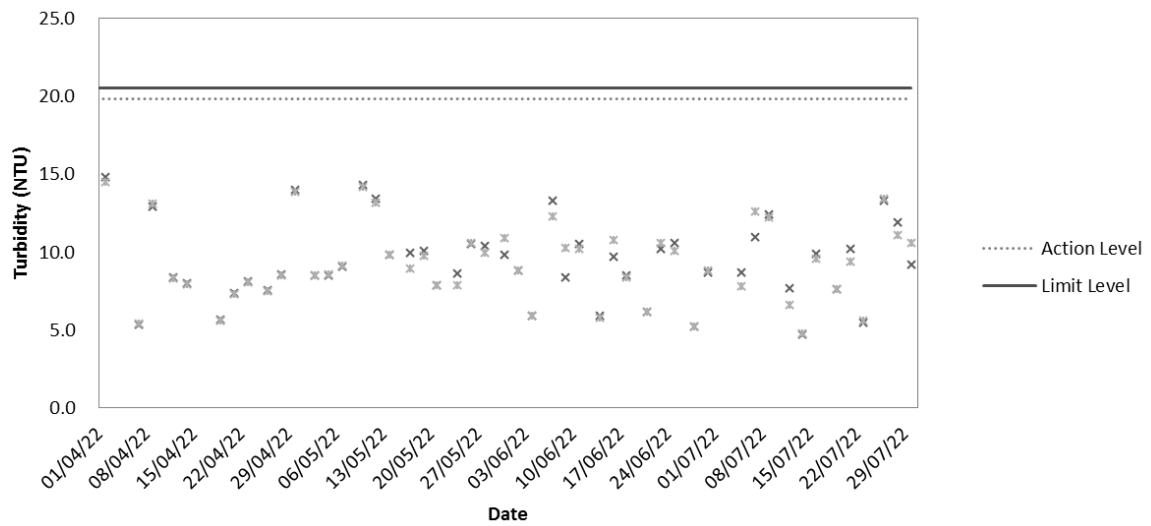


Appendix F

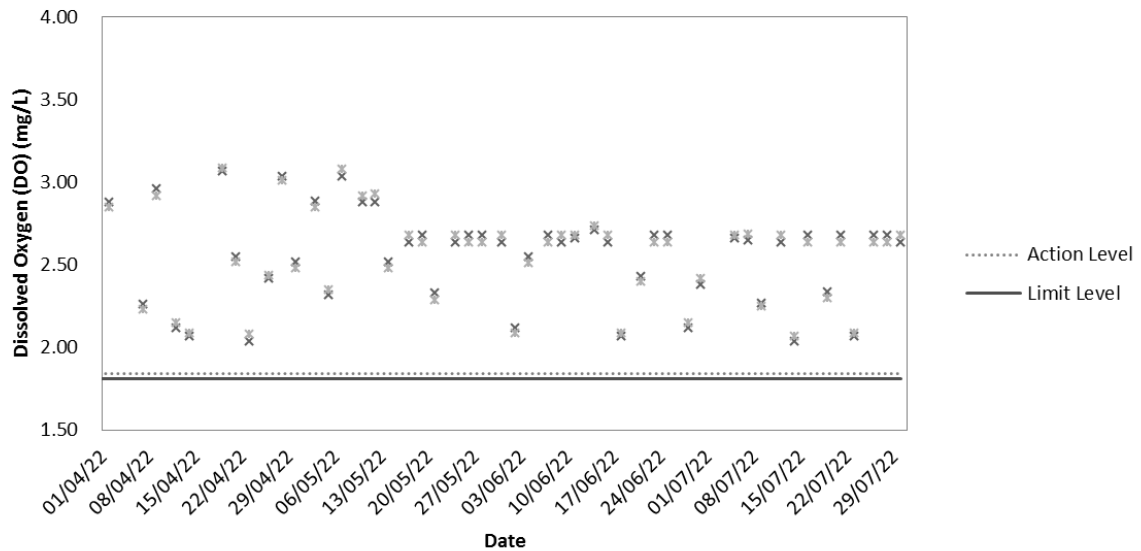
Graphical Plots of Impact Water Quality Monitoring Data



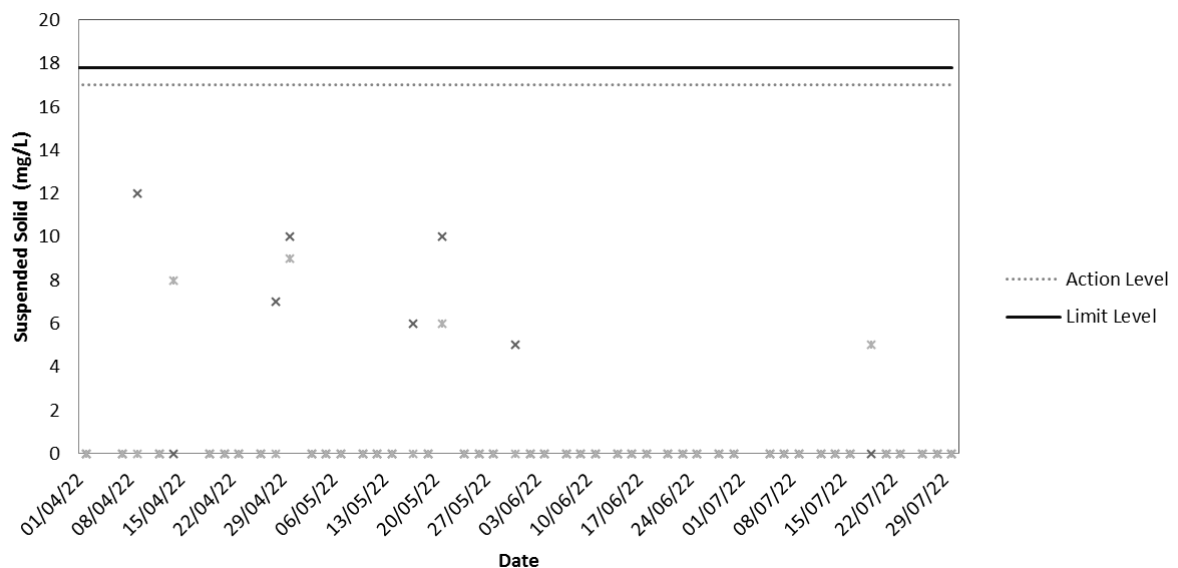
Impact Turbidity Result



Impact DO Result



Impact Suspended Solid (SS) Result





Appendix G

Event and Action Plan

Event and Action Plan for Air Quality (Dust) during Construction Phase

EVENT	ACTION			
	ET	IEC	ER	CONTRACTOR
Action Level being exceeded for one sample	<ol style="list-style-type: none"> 1. Identify source; 2. Inform IEC and ER; 3. Repeat measurement to confirm finding; 4. Increase monitoring frequency to daily. 	<ol style="list-style-type: none"> 1. Check monitoring data submitted by ET; 2. Check Contractor's working method. 	<ol style="list-style-type: none"> 1. Notify Contractor. 	<ol style="list-style-type: none"> 1. Rectify any unacceptable practice; 2. Amend working methods if appropriate.
Action Level being exceeded for two or more consecutive samples	<ol style="list-style-type: none"> 1. Identify source; 2. Inform IEC and ER; 3. Repeat measurements to confirm findings; 4. Increase monitoring frequency to daily; 5. Discuss with IEC and Contractor on remedial actions required; 6. If exceedance continues, arrange meeting with IEC and ER; 7. If exceedance stops, cease additional monitoring. 	<ol style="list-style-type: none"> 1. Check monitoring data submitted by ET; 2. Check Contractor's working method; 3. Discuss with ET and Contractor on possible remedial measures; 4. Advise the ER on the effectiveness of the proposed remedial measures; 5. Supervise implementation of remedial measures. 	<ol style="list-style-type: none"> 1. Confirm receipt of notification of failure in writing; 2. Notify Contractor; 3. Ensure remedial measures are properly implemented. 	<ol style="list-style-type: none"> 1. Submit proposals for remedial actions to IEC within 3 working days of notification; 2. Implement the agreed proposals; 3. Amend proposal if appropriate.
Limit Level being exceeded for one sample	<ol style="list-style-type: none"> 1. Identify source; 2. Inform IEC, ER and EPD; 3. Repeat measurement to confirm finding; 4. Increase monitoring frequency to daily; 5. Assess effectiveness of Contractor's remedial actions; 	<ol style="list-style-type: none"> 1. Check monitoring data submitted by ET and Contractor's working method; 2. Discuss with Contractor on the possible mitigation measures; 3. Review the proposed mitigation measures submitted by Contractor 	<ol style="list-style-type: none"> 1. Confirm receipt of notification of failure in writing; 2. Notify Contractor; 3. Check monitoring data and Contractor's working methods; 4. Discuss with IEC and Contractor on potential remedial actions; 	<ol style="list-style-type: none"> 1. Take immediate action to avoid further exceedance; 2. Submit proposals for remedial actions to ER within 3 working days of notification; 3. Implement the agreed proposals; 4. Amend proposal if appropriate.



EVENT	ACTION			
	ET	IEC	ER	CONTRACTOR
	6. Keep EPD and ER informed of the results.	and advise the ER accordingly.	5. Ensure remedial actions properly implemented.	
Limit Level being exceeded for two or more consecutive samples	1. Identify source; 2. Inform IEC, ER and EPD the causes & actions taken for the exceedances; 3. Repeat measurement to confirm findings; 4. Increase monitoring frequency to daily; 5. Investigate the causes of exceedance; 6. Arrange meeting with EPD and ER to discuss the remedial actions to be taken; 7. Assess effectiveness of Contractor's remedial actions and keep EPD and ER informed of the results; 8. If exceedance stops, cease additional monitoring.	1. Check monitoring data submitted by ET and Contractor's working method; 2. Discuss with Contractor on the possible mitigation measures; 3. Review the proposed mitigation measures submitted by Contractor and advise the ER accordingly; 4. Supervise the implementation of mitigation measures.	1. Confirm receipt of notification of failure in writing; 2. Notify Contractor; 3. Carry out analysis of Contractor's working procedures to determine possible mitigation to be implemented; 4. Discuss with IEC and the Contractor on potential remedial actions; 5. Review Contractor's remedial actions whenever necessary to assure their effectiveness; 6. If exceedance continues, consider what portion of the work is responsible and instruct the Contractor to stop that portion of work until the exceedance is abated.	1. Take immediate action to avoid further exceedance; 2. Submit proposals for remedial actions to ER within 3 working days of notification; 3. Implement the agreed proposals; 4. Resubmit proposals if problem still not resolved; 5. Stop the relevant portion of works as determined by the ER until the exceedance is abated.

Event and Action Plan for Construction Noise

EVENT	ACTION			
	ET	IEC	ER	CONTRACTOR
Action level	<ol style="list-style-type: none"> 1. Notify IEC and Contractor; 2. Carry out investigation; 3. Report the results of investigation to the IEC and Contractor; 4. Discuss with the Contractor and formulate remedial measures ; 5. Increase monitoring frequency to check the effectiveness of mitigation measures. 	<ol style="list-style-type: none"> 1. Review the analyzed results submitted by the ET; 2. Review the proposed remedial measures by the Contractor and advise the ER accordingly; 3. Supervise the implementation of remedial measures. 	<ol style="list-style-type: none"> 1. Confirm receipt of notification in writing; 2. Notify Contractor; 3. Require Contractor to propose remedial measures for the analyzed noise problem; 4. Ensure mitigation measures are properly implemented. 	<ol style="list-style-type: none"> 1. Submit noise mitigation proposal to IEC; 2. Implement noise mitigation proposals.
Limit level	<ol style="list-style-type: none"> 1. Notify IEC, ER, EPD & Contractor; 2. Identify source; 3. Repeat measurement to confirm findings; 4. Increase monitoring frequency; 5. Carry out analysis of Contractor's working procedures to determine possible mitigation to be implemented; 6. Inform IEC, ER and EPD the causes and actions taken for the exceedances; 7. Assess the effectiveness of Contractor's 	<ol style="list-style-type: none"> 1. Discuss amongst ER, ET, and Contractor on the potential remedial actions; 2. Review Contractor's remedial actions whenever necessary to assure their effectiveness and advise the ER accordingly; 3. Supervise the implementation of remedial measures. 	<ol style="list-style-type: none"> 1. Confirm receipt of notification in writing; 2. Notify Contractor; 3. Require Contractor to propose remedial measures for the analyzed noise problem; 4. Ensure mitigation measures are properly implemented; 5. If exceedances continues, consider what portion of the work is responsible and instruct the Contractor to stop that portion of work until the 	<ol style="list-style-type: none"> 1. Undertake immediate action to avoid further exceedance; 2. Submit proposals for remedial actions to IEC within 3 working days of notification; 3. Implement the agreed proposals; 4. Resubmit proposals if problem still not under control; 5. Stop the relevant portion of works as determined by ER, until the exceedance is abated.

	remedial actions and keep IEC, EPD and ER informed of the results; 8. If exceedance stops, cease additional monitoring.		exceedance is abated.	
--	--	--	-----------------------	--

Event and Action Plan for Water Quality

Event	Action			
	ET Leader	IEC	ER	Contractor
Action Level being exceeded by one sampling day	<ol style="list-style-type: none"> Repeat in-situ measurement to confirm findings; Identify reasons for non-compliance and sources of impact; Inform IEC and Contractor; Check monitoring data, all plant, equipment and Contractor's working methods; Discuss mitigation measures with IEC and Contractor; Repeat measurement on next day of exceedance. 	<ol style="list-style-type: none"> Discuss with ET and Contractor on the mitigation measures; Review proposals on mitigation measures submitted by Contractor and advise the ER accordingly; Assess the effectiveness of the implemented mitigation measures. 	<ol style="list-style-type: none"> Discuss with IEC on the proposed mitigation measures; make agreement on the mitigation measures to be implemented; Assess the effectiveness of the implemented mitigation measures. 	<ol style="list-style-type: none"> Inform the ER and confirm notification of the non-compliance in writing; Rectify unacceptable practice; Check all plant and equipment Consider changes of working methods; Discuss with ET and IEC and propose mitigation measures to IEC and ER; Implement the agreed mitigation measures.
Action Level being exceeded by more than two consecutive sampling days	<ol style="list-style-type: none"> Repeat in-situ measurement to confirm findings; Identify reasons for non-compliance and sources of impact; Inform IEC and Contractor; Check monitoring 	<ol style="list-style-type: none"> Discuss with ET and Contractor on the mitigation measures; Review proposals on mitigation measures submitted by Contractor and advise the ER accordingly; 	<ol style="list-style-type: none"> Discuss with IEC on the proposed mitigation measures; Make agreement on the mitigation measures to be implemented; Assess the effectiveness of the 	<ol style="list-style-type: none"> Inform the ER and confirm notification of the non-compliance in writing; Rectify unacceptable practice; Check all plant and equipment; Consider changes of



Event	Action			
	ET Leader	IEC	ER	Contractor
	data, all plant, equipment and Contractor's working methods; 5. Discuss mitigation measures with IEC and Contractor; 6. Ensure mitigation measures are implemented; 7. Prepare to increase the monitoring frequency to daily; 8. Repeat measurement on next day of exceedance.	3. Assess the effectiveness of the implemented mitigation measures.	implemented mitigation measures.	working methods; 5. Discuss with ET and IEC and propose mitigation measures to IEC and ER within 3 working days; 6. Implement the agreed mitigation measures.
Limit Level being exceeded by one sampling day	1. Repeat in-situ measurement to confirm findings; 2. Identify reasons for non-compliance and sources of impact; 3. Inform IEC, Contractor and EPD; 4. Check monitoring data, all plant, equipment and Contractor's working methods; 5. Discuss mitigation measures with IEC, ER and Contractor; 6. Ensure mitigation measures are implemented; 7. Increase the monitoring frequency to daily until no exceedance of Limit Level.	1. Discuss with ET and Contractor on the mitigation measures; 2. Review proposals on mitigation measures submitted by Contractor and advise the ER accordingly; 3. Assess the effectiveness of the implemented mitigation measures.	1. Discuss with IEC, ET and Contractor on the proposed mitigation measures; 2. Request Contractor to critically review the working methods; 3. Make agreement on the mitigation measures to be implemented; 4. Assess the effectiveness of the implemented mitigation measures.	1. Inform the ER and confirm notification of the non-compliance in writing; 2. Rectify unacceptable practice; 3. Check all plant and equipment; 4. Consider changes of working methods; 5. Discuss with ET, IEC and ER and propose mitigation measures to IEC and ER within 3 working days; 6. Implement the agreed mitigation measures.



Event	Action			
	ET Leader	IEC	ER	Contractor
Limit Level being exceeded by more than two consecutive sampling days	<ol style="list-style-type: none"> 1. Repeat in-situ measurement to confirm findings; 2. Identify reasons for non-compliance and sources of impact; 3. Inform IEC, Contractor and EPD; 4. Check monitoring data, all plant, equipment and Contractor's working methods; 5. Discuss mitigation measures with IEC, ER and Contractor; 6. Ensure mitigation measures are implemented; 7. Increase the monitoring frequency to daily until no exceedance of Limit Level for two consecutive days. 	<ol style="list-style-type: none"> 1. Discuss with ET and Contractor on the mitigation measures; 2. Review proposals on mitigation measures submitted by Contractor and advise the ER accordingly; 3. Assess the effectiveness of the implemented mitigation measures. 	<ol style="list-style-type: none"> 1. Discuss with IEC, ET and Contractor on the proposed mitigation measures; 2. Request Contractor to critically review the working methods; 3. Make agreement on the mitigation measures to be implemented; 4. Assess the effectiveness of the implemented mitigation measures; 5. Consider and instruct, if necessary, the Contractor to slow down or to stop all or part of the marine work until no exceedance of Limit Level. 	<ol style="list-style-type: none"> 1. Inform the ER and confirm notification of the non-compliance in writing; 2. Rectify unacceptable practice; 3. Check all plant and equipment; 4. Consider changes of working methods; 5. Discuss with ET, IEC and ER and propose mitigation measures to IEC and ER within 3 working days; 6. Implement the agreed mitigation measures; 7. As directed by the ER, to slow down or to stop all or part of the marine work or construction activities.

Appendix H

Implementation Schedule for Environmental Mitigation Measures (EMIS)

Environmental Mitigation Measures	Location	Implementation Status			
		Implemented	Partially implemented	Not implemented	Not Applicable
Air Quality					
<ul style="list-style-type: none">The working area for the uprooting of trees, shrubs, or vegetation or for the removal of boulders, poles, pillars or temporary or permanent structures should be sprayed with water or a dust suppression chemical immediately before, during and immediately after the operation so as to maintain the entire surface wet;	Site Area	√			
<ul style="list-style-type: none">All demolished items (including trees, shrubs, vegetation, boulders, poles, pillars, structures, debris, rubbish and other items arising from site clearance) that may dislodge dust particles should be covered entirely by impervious sheeting or placed in an area sheltered on the top and the 3 sides within a day of demolition;	Site Area	√			
<ul style="list-style-type: none">Vehicle washing facilities including a high pressure water jet should be provided at every discernible or designated vehicle exit point;	Site Entrance	√			
<ul style="list-style-type: none">The area where vehicle washing takes place and the section of the road between the washing facilities and the exit point should be paved with concrete, bituminous materials or hardcores;	Site Exit	√			
<ul style="list-style-type: none">Where a site boundary adjoins a road, street, service and or other area accessible to the public, hoarding of not less than 2.4m from ground level should be provided along the entire length of that portion of the site boundary except for a site entrance or exit;	Site Area	√			
<ul style="list-style-type: none">Every main haul road (i.e. any course inside a construction site having a vehicle passing rate of higher than 4 in any 30 minutes) should be paved with concrete, bituminous materials, hardcores or metal plates, and kept clear of dusty materials; or sprayed with water or a dust suppression chemical so as to maintain the entire road surface wet;	Main Haul Road	√			
<ul style="list-style-type: none">The portion of any road leading only to a construction site that is within 30m of a discernible or designated vehicle entrance or exit should be kept clear of dusty materials;	Site Entrance and Exit	√			
<ul style="list-style-type: none">Immediately before leaving a construction site, every vehicle should be washed to remove any dusty materials from its body and wheels;	Site Exit	√			
<ul style="list-style-type: none">Where a vehicle leaving a construction site is carrying a load of dusty materials, the load should be covered entirely by clean impervious sheeting to ensure that the dusty materials do not leak from the vehicle;	--	√			
<ul style="list-style-type: none">The working area of any excavation or earth moving operation should be sprayed with water or a dusty suppression chemical immediately before, during and immediately after the operation so as to maintain the entire surface wet;	Site Area	√			
<ul style="list-style-type: none">Exposed earth shall be properly treated by compaction, turfing, hydroseeding, vegetation planting or sealing with latex, vinyl, bitumen, shotcrete or other suitable	Site Area	√			

surface stabilizer within 6 months after the last construction activity on the construction site or part of the construction site where the exposed earth lies;					
• Any stockpile of dusty material should be either covered entirely by impervious sheeting; placed in an area sheltered on the top and the 3 sides; or sprayed with water or a dust suppression chemical so as to maintain the entire surface wet.	Site Area	√			
Noise					
• Quiet plants should be used in order to reduce the noise impacts to protect the nearby NSRs.	Site Area	√			
• Temporary and Movable Noise Barriers should be used in order to reduce the noise impact to the surrounding sensitive receivers	Site Area	√			
• Intermittent noisy activities should be scheduled to minimize exposure of nearby NSRs to high levels of construction noise.	Site Area	√			
• Idle equipment should be turned off or throttled down.	Site Area	√			
• Construction activities should be planned so that parallel operation of several sets of equipment close to a given receiver is avoided	Site Area	√			
• Construction plant should be properly maintained and operated.	Site Area	√			
Water Quality					
• Exposed stockpiles should be covered with tarpaulin or impervious sheets before a rainstorm occurs;	Site Area	√			
• The exposed soil surfaces should also be properly protected to minimize dust emission;	Site Area	√			
• The stockpiles of materials should be placed in the locations away from the drainage channel so as to avoid releasing materials into the channel;	Site Area	√			
• Wheel washing facilities should be provided at site exits to ensure that earth, mud and debris would not be carried out of the works areas by vehicles;	Site Exit	√			
• Provision of site drainage systems and treatment facilities would be required to minimize the water pollution;	Site Area	√			
• A discharge license needs to be applied from EPD for discharging effluent from the construction site;	--	√			
• The treated effluent quality is required to meet the requirements specified in the discharge license;	--	√			
• Provision of chemical toilets is required to collect sewage from workforce. The chemical toilets should be cleaned on a regular basis;	Chemical Toilet	√			

• A licensed waste collector should be employed to clean the chemical toilets and temporary storage tank on a regular basis;	--	√			
• Illegal disposal of chemicals should be strictly prohibited;	Site Area	√			
• Registration as a chemical waste producer is required if chemical wastes are generated and need to be disposed of. The Waste Disposal Ordinance (Cap 354) and its subsidiary regulations in particular the Waste Disposal (Chemical Waste) (General) Regulation should be observed and complied with for control of chemical wastes;	Site Area	√			
• Disposal of chemical wastes should be carried out in compliance with the Waste Disposal Ordinance. The Code of Practice on the Packaging, Labelling and Storage of Chemical Wastes published under the Waste Disposal Ordinance should be used as a guideline for handling chemical wastes;	Site Area	√			
• The impact from accidental spillage of chemicals can be effectively controlled through good management practices.	Site Area	√			
Waste Management					
• Segregation and storage of different types of waste in different containers, skips or stockpiles to enhance reuse or recycling of materials and their proper disposal;	Site Area	√			
• To encourage collection of aluminium cans by individual collectors, separate bins should be provided to segregate this waste from other general refuse generated by the workforce;	Site Area	√			
• Any unused chemicals or those with remaining functional capacity should be recycled;	Site Area	√			
• Prior to disposal of C&D waste, it is recommended that wood, steel and other metals be separated for re-use and/or recycling and inert waste as fill material to minimize the quantity of waste to be disposed of to landfill;	Site Area	√			
• Proper storage and site practices to minimize the potential for damage or contamination of construction materials; and	Site Area		√		
• Plan and stock construction materials carefully to minimize amount of waste generated and avoid unnecessary generation of waste.	Site Area	√			
Landscape and Visual					
• Detailed tree survey should have been completed	Site Area	√			
• Trees should be transplanted to their final positions clear of the construction site	--			√	
• Erect site hoarding to protect adjacent vegetation from damage	Site Area	√			

• Regular inspections of the transplanted trees should be made to ensure the effectiveness of the hoarding	Site Area	√			
• Any topsoil excavated during the course of the works should be stored and protected on site for reuse for the restoration and screen planting works	Site Area			√	

Appendix I

Weather Condition



Daily Extract of Meteorological Observations, May 2022

Day May	Mean Pressure (hPa)	Air Temperature			Mean Dew Point (deg. C)	Mean Relative Humidity (%)	Total Rainfall (mm)
		Absolute Daily Max (deg. C)	Mean (deg. C)	Absolute Daily Min (deg. C)			
1	1012.6	24.6	20.7	17.1	18.8	89	32.4
2	1014.6	21.3	18.5	16.4	15.7	84	23.4
3	1015.8	26.6	22.3	18.8	14.6	62	-
4	1014.3	28.5	24.6	21.6	16.8	63	-
5	1012.6	29.3	25.2	23.2	19.9	73	-
6	1012.4	28.9	25.5	23.4	20.7	76	-
7	1013.0	29.7	25.4	23.6	20.9	77	0.8
8	1013.2	27.5	25.0	23.4	19.1	70	Trace
9	1012.3	29.0	25.6	24.3	20.8	75	Trace
10	1009.7	27.7	25.7	24.4	23.6	88	1.4
11	1007.8	25.9	25.0	24.2	24.1	95	61.4
12	1006.0	27.0	25.8	24.6	24.2	91	123.5
13	1005.2	26.9	25.5	24.3	24.1	92	107.1
14	1008.2	26.5	24.6	23.5	23.5	93	5.0
15	1009.8	24.9	22.6	20.8	21.1	91	26.2
16	1012.4	20.8	20.0	18.8	17.5	85	4.7
17	1013.6	26.3	22.4	19.6	16.9	72	-
18	1013.8	27.1	23.9	21.9	13.3	52	-
19	1011.9	30.0	25.8	23.5	18.2	64	-
20	1009.2	30.9	26.9	24.5	22.1	76	-
21	1007.8	30.7	26.9	24.6	22.6	78	-
22	1007.3	27.2	25.0	24.1	21.9	83	0.6
23	1007.6	24.8	24.0	23.1	22.3	90	11.2
24	1009.2	25.0	24.4	23.7	23.3	93	10.3
25	1007.7	27.4	25.3	23.8	23.7	91	1.3
26	1004.7	28.6	26.7	25.1	24.6	88	2.4
27	1004.3	28.5	27.4	26.1	25.3	89	24.7
28	1005.5	31.3	28.7	27.1	25.2	81	Trace
29	1005.8	32.2	29.1	27.8	25.1	79	Trace
30	1005.9	32.7	29.2	27.4	24.9	78	Trace
31	1006.8	30.7	28.2	27.4	24.9	82	0.1
Mean/Total	1009.7	27.7	25.0	23.3	21.3	81	436.5

0.0Remark(s):

1. Trace means rainfall less than 0.05 mm
2. § 1981-2010 Climatological Normal
3. The meteorological observations extracted from Hong Kong Observatory only shown the daily average and may be varied from the weather condition recorded during monitoring.



Daily Extract of Meteorological Observations, June 2022

Day June	Mean Pressure (hPa)	Air Temperature			Mean Dew Point (deg. C)	Mean Relative Humidity (%)	Total Rainfall (mm)
		Absolute Daily Max (deg. C)	Mean (deg. C)	Absolute Daily Min (deg. C)			
1	1007.1	30.9	28.7	27	25	81	1.2
2	1006.2	31	28.8	26	24.9	80	11.9
3	1005.6	31.2	29.2	28	25.5	81	1.6
4	1005.8	32	29.6	28.6	25.3	78	Trace
5	1004.7	32	29.6	28.7	25.3	78	Trace
6	1003.6	30.6	28.9	27.6	25.7	83	2.5
7	1004.5	29.6	27.4	24.6	24.8	86	33.8
8	1005.6	28	25.8	24.7	24.6	93	66
9	1005.5	27.9	26.3	25	24.6	90	28.7
10	1005.4	27.3	26.1	25	24.6	92	25.8
11	1006.6	29.1	26.8	25.3	24.9	89	47.5
12	1007	30.3	28.4	25.6	25.4	84	2.6
13	1006.4	30.6	28.9	28.1	25.2	80	0
14	1007	29.3	27.4	24.8	24.9	87	42.8
15	1009.2	30.5	26.7	24	24.5	88	11
16	1008.9	30.5	27.6	24.3	24.6	84	2.6
17	1007.6	31	29	28	24.9	79	1
18	1006.8	29.8	28.8	27.5	25.2	81	1.3
19	1006.1	30.9	29.3	28	25.6	81	0.1
20	1004.8	30.4	29.2	27.6	25.4	80	2.8
21	1005.9	30.5	29.4	28.6	25.4	80	Trace
22	1009.6	31.8	29.5	28.1	25.1	78	0
23	1010.4	33.8	30	27.9	24.7	74	0
24	1008.6	33.4	30	27.8	24.3	73	0
25	1007.8	32.8	29.6	27.7	24.4	74	0
26	1009.3	33.9	30	26.8	24.7	74	0.3
27	1008.1	33.4	30.1	27.8	24.6	73	0.1
28	1005.1	34.4	30.6	28.2	24.7	71	0
29	1002.8	33.9	30.2	28.1	25.9	78	0.7
30	1002.7	29.6	27.5	25.9	25.5	89	64.9
Mean/Total	1006.5	31	28.6	26.8	25	81	349.2

0.0Remark(s):

1. Trace means rainfall less than 0.05 mm
2. § 1981-2010 Climatological Normal
3. The meteorological observations extracted from Hong Kong Observatory only shown the daily average and may be varied from the weather condition recorded during monitoring.



Daily Extract of Meteorological Observations, July 2022

Day July	Mean Pressure (hPa)	Air Temperature			Mean Dew Point (deg. C)	Mean Relative Humidity (%)	Total Rainfall (mm)
		Absolute Daily Max (deg. C)	Mean (deg. C)	Absolute Daily Min (deg. C)			
1	1000.7	29.7	27.2	25.4	24.5	85	63
2	999.1	28.4	26.9	25.6	24.9	89	72.4
3	1001.5	30.3	29	28.2	25.6	82	0
4	1002.2	29.4	28.8	27.9	25.6	83	0.4
5	1004.2	29.7	29	28.4	25.6	82	0.2
6	1005.7	30.3	28.8	28	25	81	0.5
7	1007.3	31.6	28.7	27.2	26.1	86	13.1
8	1007.4	33.8	30	27.7	25.8	79	Trace
9	1005.7	33.3	29.9	28.6	26.2	81	Trace
10	1006.5	34.2	30.5	28.6	26	77	Trace
11	1007.3	35.1	30.9	28.5	25.4	73	0
12	1006.9	35.2	31.1	28.6	25.2	72	0
13	1005.9	35.2	31	28.4	24.8	71	0
14	1005.6	33.1	30.4	28.5	25.2	75	0
15	1006.5	34.3	30.4	28.6	25.7	77	0.2
16	1006	33.3	30.5	28.8	26	77	1.5
17	1005.7	32.6	30.5	28.8	25.8	76	1.2
18	1004.9	32.7	30.4	28.5	26	78	2.7
19	1006.6	33.7	30.8	29.1	25.9	75	Trace
20	1009.8	34.2	30.8	29.2	26.1	76	0.6
21	1012	35.2	30.9	28.1	25.7	74	0.3
22	1010.8	35.6	31.2	28.2	25.2	72	0
23	1008.7	34.9	31.4	29.2	26.1	74	0
24	1007.1	36.1	32	29.5	26	72	0
25	1007.6	35.8	32	29.9	26.6	74	0
26	1007.7	35.2	31.2	29.1	25.1	71	0
27	1007.1	34.2	31	29	24.5	69	0
28	1006.2	35.3	31.2	28.8	25.7	73	0
29	1004.7	35.3	31.7	29.7	26.4	74	0
30	1004.3	31.2	29.5	26.5	25.9	81	2.4
31	1004.3	34	30.8	28.3	25.8	76	0
Mean/Total	1006	33.3	30.3	28.4	25.6	77	158.5

0.0Remark(s):

1. Trace means rainfall less than 0.05 mm
2. § 1981-2010 Climatological Normal
3. The meteorological observations extracted from Hong Kong Observatory only shown the daily average and may be varied from the weather condition recorded during monitoring.

Appendix J

Waste Flow Table

Name of Department: DSD

Year: 2022

Project: Design, Build and Operate San Wai Sewage Treatment Works - Phase 1

Contract No.: DC/2013/10

Waste Flow Table

Month	Actual Quantities of Inert C&D Materials Generated Monthly						Actual Quantities of C&D Wastes Generated Monthly				
	Total Quantity Generated	Broken Concrete (see Note ³)	Reused in the Contract (see Note)	Reused in other Projects	Disposed as Public Fill (see Note ⁴)	Imported Fill (see Note ⁴)	Metals	Paper/ cardboard packaging	Plastics (see Note ²)	Chemical Waste	Others, e.g. general refuse
	(in '000m ³)	(in '000m ³)	(in '000m ³)	(in '000m ³)	(in '000m ³)	(in '000m ³)	(in '000 kg)	(in '000kg)	(in '000kg)	(in '000kg)	(in '000 kg)
Jan	0.000	0.000	0.000	0.000	0.000	0.000	0.000	0.000	0.000	0.000	33.170
Feb	0.000	0.000	0.000	0.000	0.000	0.000	0.000	0.000	0.000	0.000	0.000
Mar	0.007	0.000	0.000	0.000	0.007	0.000	0.000	0.000	0.000	0.000	7.220
Apr	0.003	0.000	0.000	0.000	0.003	0.000	0.000	0.000	0.000	0.000	0.000
May	0.000	0.000	0.000	0.000	0.000	0.000	0.000	0.000	0.000	0.000	0.000
Jun	0.000	0.000	0.000	0.000	0.000	0.000	0.000	0.000	0.000	0.000	0.000
Jul	0.000	0.000	0.000	0.000	0.000	0.000	0.000	0.000	0.000	0.000	0.000
Aug											
Sep											
Oct											
Nov											
Dec											
Total	0.010	0.000	0.000	0.000	0.010	0.000	0.000	0.000	0.000	0.000	40.390

Notes: (1) The waste flow table shall also include C&D materials that are specified in the Contract to be imported for use at the Site.

(2) Plastics refer to plastic bottles/ containers, plastic sheets/ foam from packaging materials.

(3) Broken concrete for recycling into aggregates.

(4) Assumption: The densities of subbase, Type A, Type B, Rockfill, Soil, Mix Rock and Soil, Reclaimed Asphalt Pave, Slurry are 2.0 ton/m³; the densities of Building debris and special fill materials are 2.1 ton/m³; the densities of Broken Concrete is 2.4 ton/m³.

Summary Table for Work Processes or Activities Requiring Timber for Temporary Works

Project: Design, Build and Operate San Wai Sewage Treatment Works – Phase 1

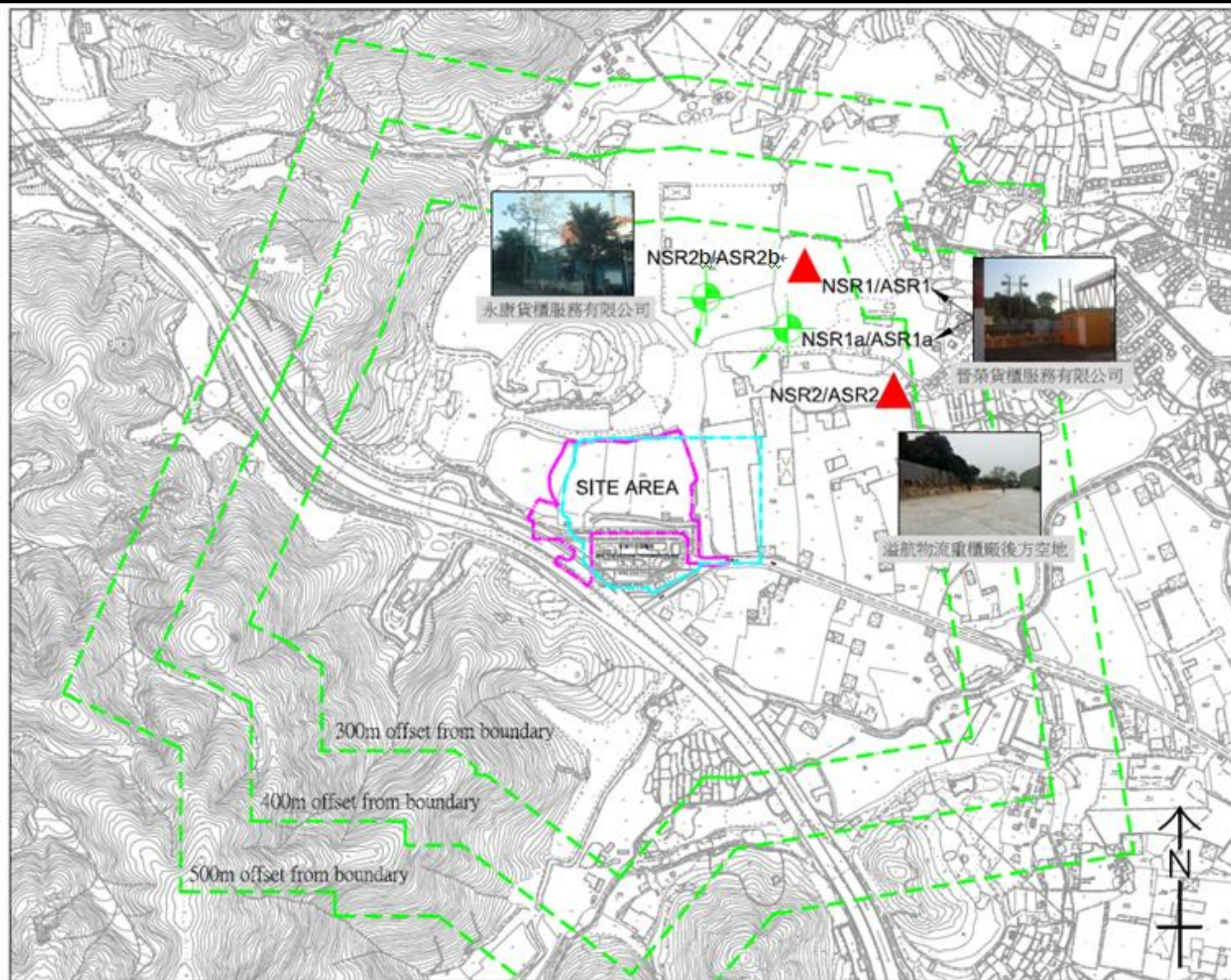
Contract No.: DC/2013/10

Item No.	Description of Works Process or Activity [see note (a) below]	Justifications for Using Timber in Temporary Construction Works	Est. Quantities of Timber Used (m ³)	Actual Quantities used (m ³)	Remarks
1	Nil	Nil	Nil	Nil	Nil
2					
3					
4					
5					
6					
Total Estimated Quantity of Timber Used			Nil		

- Notes: (a) The Contractor shall list out all the work items requiring timber for use in temporary construction works. Several minor work items may be grouped into one for ease of updating.
- (b) The summary table shall be submitted to the Supervising Officer's Representative monthly together with the Waste Flow Table for review and monitoring in accordance with the PS Clause 1.89(5) (c).

Figure 1

Locations of Air Quality and Noise Monitoring Stations

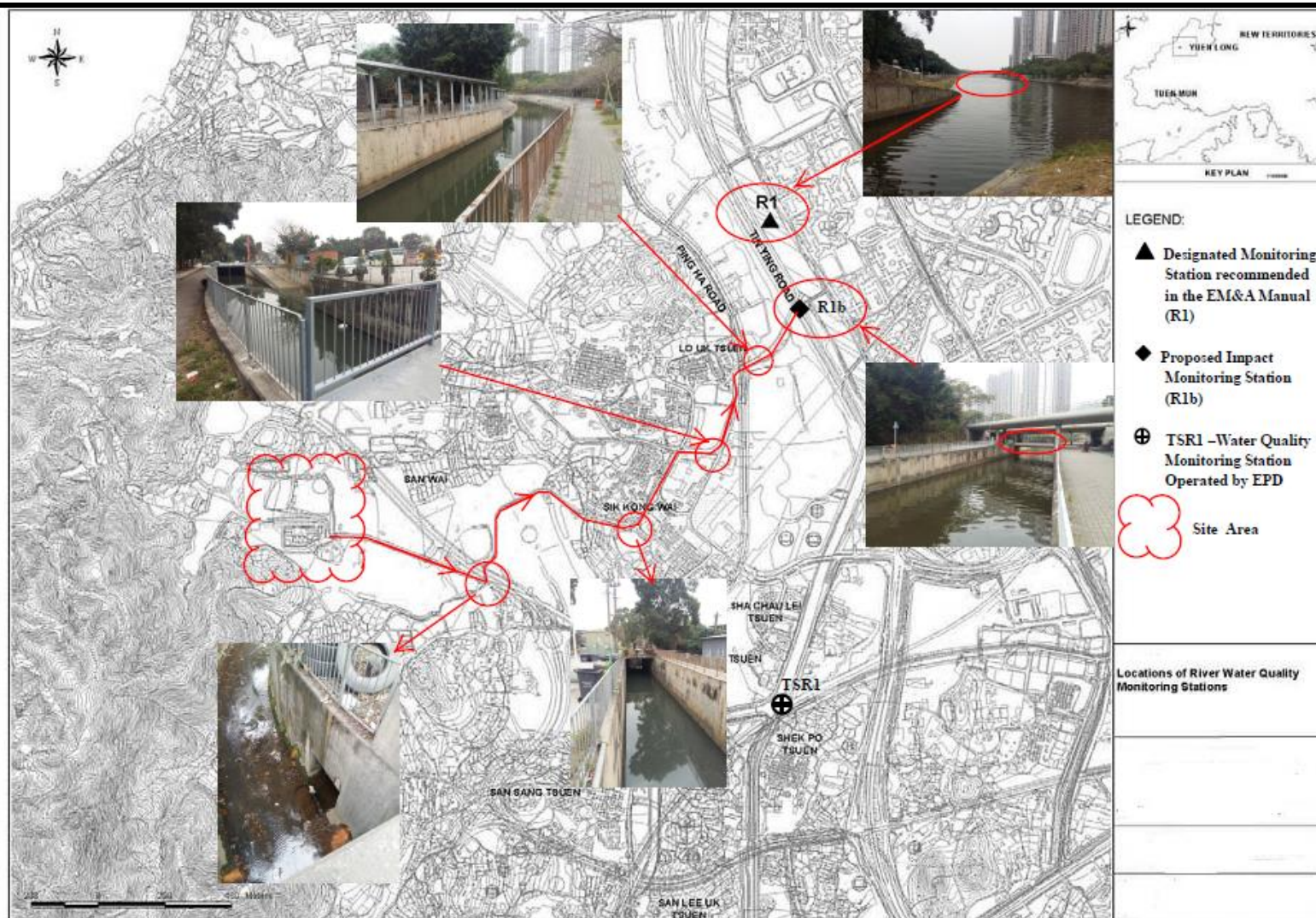


Project: Contract No. DC/2013/10 - Design, Build and Operate San Wai Sewage Treatment Works – Phase 1

Figure 1 Locations of Air Quality and Noise Monitoring Stations

Figure 2

Locations of Water Quality Monitoring Station



Project: Contract No. DC/2013/10 - Design, Build and Operate San Wai Sewage Treatment Works – Phase 1
Figure 2 Locations of Water Quality Monitoring Station

